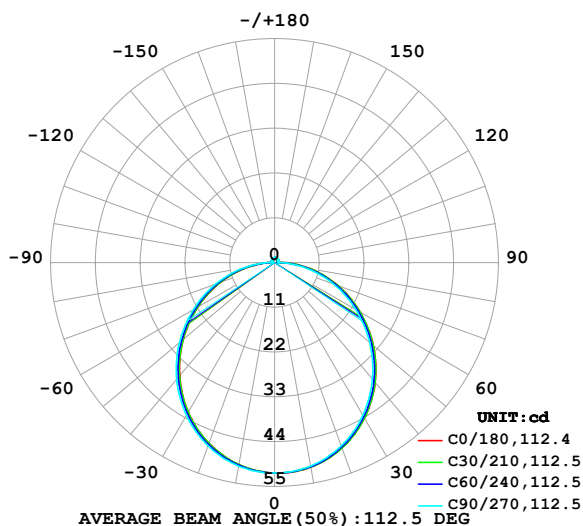


## LUMINAIRE PHOTOMETRIC TEST REPORT

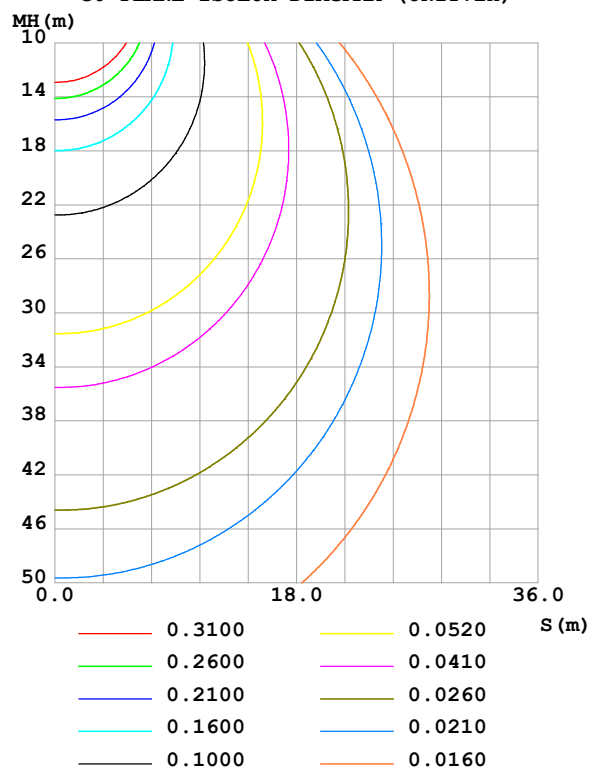
Test:U:24.00V I:0.2371A P:5.690W PF:1.000 Freq:0Hz Lamp Flux:157.462x1 lm		
NAME: SF16-24V-5050-70-DMX-RGBW(2700K)-G	TYPE:	WEIGHT:
SPEC.:	DIM.: Length=1m	SERIAL No.:
MFR.: OLympia lighting	SUR.:	Shielding Angle:

DATA OF LAMP		PHOTOMETRIC DATA Eff: 27.67 lm/W			
MODEL	5050	Imax(cd)	51.73	S/MH(C0/180)	1.23
NOMINAL POWER(W)		LOR(%)	100.0	S/MH(C90/270)	1.25
RATED VOLTAGE(V)	24	TOTAL FLUX(lm)	157.46	$\eta$ UP,DN(C0-180)	2.0,48.4
NOMINAL FLUX(lm)	157.462	CIE CLASS	DIRECT	$\eta$ UP,DN(C180-360)	1.8,47.8
LAMPS INSIDE	1	$\eta$ up(%)	3.8	CIBSE SHR NOM	1.25
TEST VOLTAGE(V)		$\eta$ down(%)	96.2	CIBSE SHR MAX	1.35

LUMINOUS INTENSITY DISTRIBUTION DIAGRAM



C0 PLANE ISOLUX DIAGRAM (UNIT:lx)



C Range: 0 - 360DEG  
C Interval: 30.0DEG  
Test Speed: HIGH  
Temperature:25.3℃  
Operators:  
Test Date:2025-03-12

$\gamma$  Range: 0 - 180DEG  
 $\gamma$  Interval: 1.0DEG  
Test System:EVERFINE GO-2000B\_V1 SYSTEM V2.00.488  
Humidity:65.0%  
Test Distance:6.360m [K=1.0000]  
Remarks:

## ZONAL FLUX DIAGRAM

## ZONAL FLUX DIAGRAM:

$\gamma$	C0	C45	C90	C135	C180	C225	C270	C315	$\gamma$	$\Phi$ zone	$\Phi$ total	%lum, lamp
10	51.05	50.99	50.75	50.48	50.39	50.47	50.74	51.00	0- 10	4.889	4.889	3.1,3.1
20	48.44	48.34	47.91	47.40	47.21	47.39	47.88	48.38	10- 20	13.97	18.86	12,12
30	44.14	43.97	43.36	42.67	42.42	42.67	43.33	44.04	20- 30	21.10	39.96	25.4,25.4
40	38.46	38.18	37.40	36.59	36.29	36.60	37.43	38.29	30- 40	25.34	65.31	41.5,41.5
50	31.67	31.36	30.47	29.58	29.27	29.60	30.52	31.49	40- 50	26.27	91.57	58.2,58.2
60	24.24	23.94	23.02	22.05	21.74	22.08	23.03	24.07	50- 60	23.97	115.5	73.4,73.4
70	16.59	16.30	15.38	14.39	14.08	14.42	15.36	16.41	60- 70	19.01	134.6	85.4,85.4
80	9.024	8.696	7.790	6.862	6.559	6.901	7.808	8.828	70- 80	12.22	146.8	93.2,93.2
90	2.564	1.945	0.8922	1.262	1.387	1.156	0.7773	2.065	80- 90	4.733	151.5	96.2,96.2
100	0.6547	0.7042	0.9038	0.8673	0.6433	0.7245	0.7853	0.7043	90-100	0.9778	152.5	96.8,96.8
110	0.7642	0.8211	0.9500	0.9280	0.7327	0.8053	0.8604	0.7793	100-110	0.8340	153.3	97.4,97.4
120	0.8537	0.9468	1.011	0.9886	0.8192	0.8803	0.9124	0.8485	110-120	0.8619	154.2	97.9,97.9
130	0.9373	1.020	1.068	1.048	0.9001	0.9467	0.9672	0.9150	120-130	0.8472	155.0	98.4,98.4
140	1.018	1.072	1.120	1.106	0.9894	1.023	1.022	0.9583	130-140	0.7792	155.8	98.9,98.9
150	1.084	1.131	1.190	1.163	1.076	1.097	1.126	1.035	140-150	0.6731	156.5	99.4,99.4
160	1.162	1.194	1.250	1.218	1.157	1.163	1.172	1.121	150-160	0.5291	157.0	99.7,99.7
170	1.206	1.245	1.265	1.256	1.217	1.227	1.219	1.214	160-170	0.3414	157.3	99.9,99.9
180	1.243	1.263	1.276	1.264	1.243	1.261	1.273	1.266	170-180	0.1189	157.5	100,100
DEG	LUMINOUS INTENSITY:cd									UNIT:lm		

Conical surface Flux(90deg): 78.535 lm

%lum = 49.9%

%lamp = 49.9%

Conical surface Flux(130deg): 125.8 lm

%lum = 79.9%

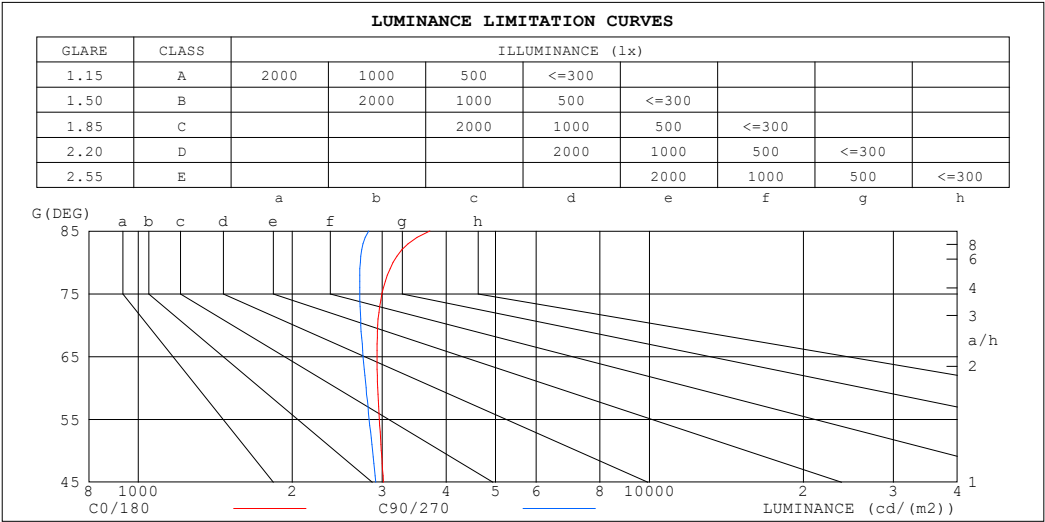
%lamp = 79.9%

C Range: 0 - 360DEG  
 C Interval: 30.0DEG  
 Test Speed: HIGH  
 Temperature:25.3℃  
 Operators:  
 Test Date:2025-03-12

$\gamma$  Range: 0 - 180DEG  
 $\gamma$  Interval: 1.0DEG  
 Test System:EVERFINE GO-2000B\_V1 SYSTEM V2.00.488  
 Humidity:65.0%  
 Test Distance:6.360m [K=1.0000]  
 Remarks:

LUMINANCE LIMITATION CURVES

Test:U:24.00V I:0.2371A P:5.690W PF:1.000 Freq:0Hz Lamp Flux:157.462x1 lm		
NAME: SF16-24V-5050-70-DMX-RGBW(2700K)-G	TYPE:	WEIGHT:
SPEC.:	DIM.: Length=1m	SERIAL No.:
MFR.: OLympia lighting	SUR.:	Shielding Angle:



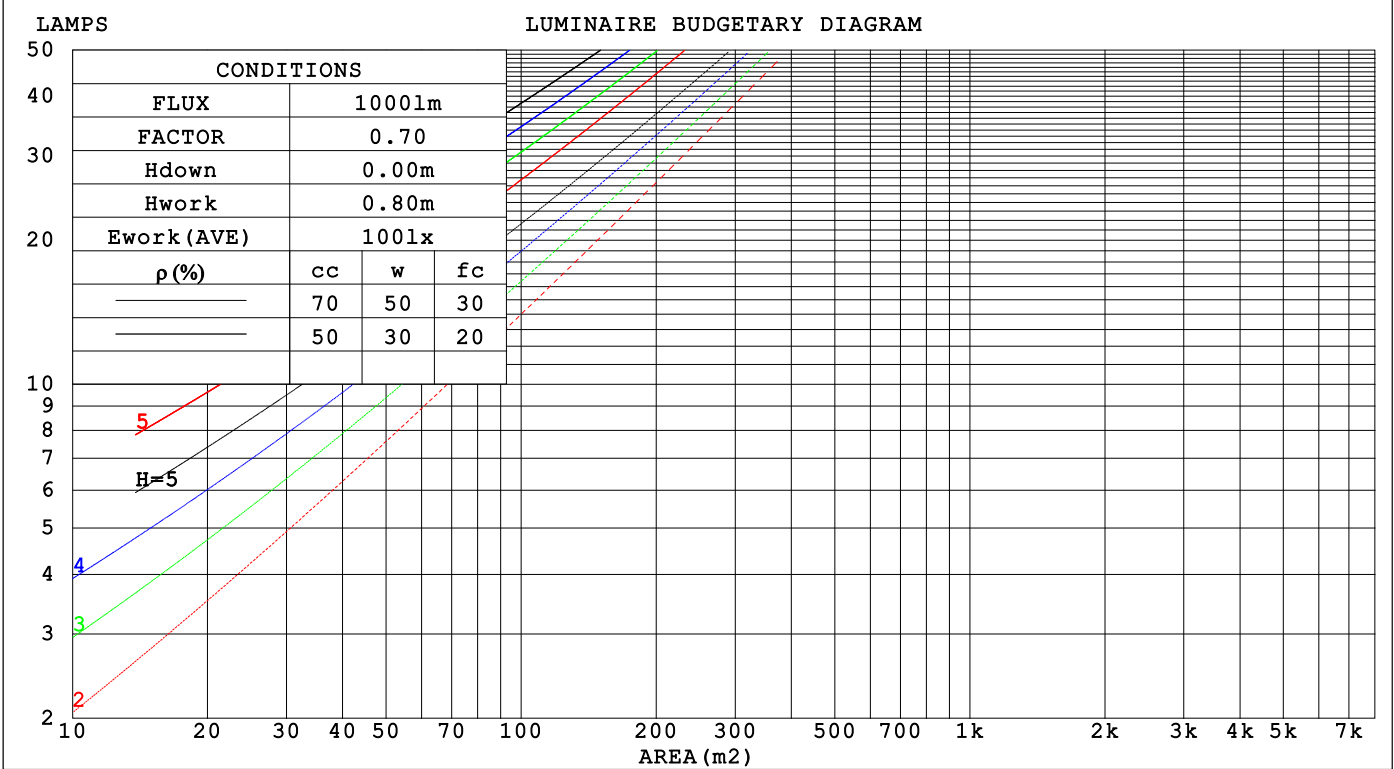
LUMINANCE cd/(m2)		
G (DEG)	C0/180	C90/270
85	3721	2823
80	3152	2718
75	2996	2711
70	2941	2725
65	2931	2752
60	2940	2789
55	2961	2829
50	2988	2872
45	3015	2915

C Range: 0 - 360DEG	γ Range: 0 - 180DEG
C Interval: 30.0DEG	γ Interval: 1.0DEG
Test Speed: HIGH	Test System:EVERFINE GO-2000B_V1 SYSTEM V2.00.488
Temperature:25.3℃	Humidity:65.0%
Operators:	Test Distance:6.360m [K=1.0000]
Test Date:2025-03-12	Remarks:

CU AND LUMINAIRE BUDGETARY ESTIMATE DIAGRAM

Test:U:24.00V I:0.2371A P:5.690W PF:1.000 Freq:0Hz Lamp Flux:157.462x1 lm		
NAME: SF16-24V-5050-70-DMX-RGBW(2700K)-G	TYPE:	WEIGHT:
SPEC.:	DIM.: Length=1m	SERIAL No.:
MFR.: OLYMPIA lighting	SUR.:	Shielding Angle:

pcc	80%			70%			50%			30%			10%			0
pw	50%	30%	10%	50%	30%	10%	50%	30%	10%	50%	30%	10%	50%	30%	10%	0
pfc	20%			20%			20%			20%			20%			0
RCR	RCR:Room Cavity Ratio                      Coefficients of Utilization(CU)															
0.0	1.18	1.18	1.18	1.15	1.15	1.15	1.09	1.09	1.09	1.04	1.04	1.04	.99	.99	.99	.96
1.0	1.02	.98	.94	.99	.95	.92	.95	.91	.88	.90	.87	.85	.86	.84	.81	.79
2.0	.89	.82	.76	.86	.80	.74	.82	.77	.72	.78	.74	.70	.75	.71	.68	.65
3.0	.78	.69	.63	.76	.68	.62	.72	.66	.60	.69	.63	.59	.66	.61	.57	.55
4.0	.69	.60	.53	.67	.59	.52	.64	.57	.51	.61	.55	.50	.59	.53	.49	.47
5.0	.61	.52	.45	.60	.51	.45	.57	.50	.44	.55	.48	.43	.53	.47	.42	.40
6.0	.55	.46	.39	.54	.45	.39	.52	.44	.38	.50	.43	.38	.48	.42	.37	.35
7.0	.50	.41	.35	.49	.40	.35	.47	.39	.34	.45	.39	.34	.44	.38	.33	.31
8.0	.45	.37	.31	.45	.36	.31	.43	.36	.30	.41	.35	.30	.40	.34	.30	.28
9.0	.42	.33	.28	.41	.33	.28	.40	.32	.27	.38	.32	.27	.37	.31	.27	.25
10.0	.38	.31	.25	.38	.30	.25	.37	.30	.25	.35	.29	.24	.34	.28	.24	.22



C Range: 0 - 360DEG  
C Interval: 30.0DEG  
Test Speed: HIGH  
Temperature:25.3℃  
Operators:  
Test Date:2025-03-12

γ Range: 0 - 180DEG  
γ Interval: 1.0DEG  
Test System:EVERFINE GO-2000B\_V1 SYSTEM V2.00.488  
Humidity:65.0%  
Test Distance:6.360m [K=1.0000]  
Remarks:

## WEC AND CCEC

Test:U:24.00V I:0.2371A P:5.690W PF:1.000 Freq:0Hz Lamp Flux:157.462x1 lm		
NAME: SF16-24V-5050-70-DMX-RGBW(2700K)-G	TYPE:	WEIGHT:
SPEC.:	DIM.: Length=1m	SERIAL No.:
MFR.: OLYMPIA lighting	SUR.:	Shielding Angle:

pcc	80%			70%			50%			30%			10%			0
pw	50%	30%	10%	50%	30%	10%	50%	30%	10%	50%	30%	10%	50%	30%	10%	0
pfc	20%			20%			20%			20%			20%			0
RCR	RCR:Room Cavity Ratio						Wall Exitance Coefficients(WEC)									
0.0																
1.0	.326	.185	.059	.317	.181	.058	.302	.173	.055	.288	.166	.053	.275	.159	.051	
2.0	.301	.165	.051	.293	.161	.050	.279	.155	.048	.267	.150	.047	.255	.144	.045	
3.0	.275	.147	.044	.269	.144	.043	.257	.139	.042	.245	.134	.041	.235	.130	.040	
4.0	.253	.131	.039	.247	.129	.038	.236	.125	.037	.226	.121	.037	.216	.118	.036	
5.0	.233	.119	.034	.228	.117	.034	.218	.113	.033	.209	.110	.033	.200	.107	.032	
6.0	.215	.108	.031	.211	.106	.031	.202	.103	.030	.194	.101	.030	.186	.098	.029	
7.0	.200	.099	.028	.196	.097	.028	.188	.095	.027	.180	.092	.027	.173	.090	.026	
8.0	.186	.091	.026	.183	.090	.025	.175	.088	.025	.169	.085	.025	.162	.083	.024	
9.0	.174	.084	.024	.171	.083	.023	.165	.081	.023	.158	.079	.023	.153	.078	.022	
10.0	.164	.079	.022	.161	.078	.022	.155	.076	.021	.149	.074	.021	.144	.072	.021	

pcc	80%			70%			50%			30%			10%			0
pw	50%	30%	10%	50%	30%	10%	50%	30%	10%	50%	30%	10%	50%	30%	10%	0
pfc	20%			20%			20%			20%			20%			0
RCR	RCR:Room Cavity Ratio						Ceiling Cavity Exitance Coefficients (CCEC)									
0.0	.219	.219	.219	.187	.187	.187	.128	.128	.128	.073	.073	.073	.023	.023	.023	
1.0	.210	.185	.162	.180	.159	.140	.123	.109	.097	.071	.063	.056	.023	.020	.018	
2.0	.203	.161	.126	.174	.139	.109	.119	.096	.076	.069	.056	.045	.022	.018	.015	
3.0	.195	.144	.103	.167	.124	.089	.115	.086	.063	.066	.050	.037	.021	.016	.012	
4.0	.187	.131	.087	.161	.113	.076	.111	.079	.053	.064	.046	.032	.021	.015	.010	
5.0	.180	.120	.076	.154	.104	.067	.106	.073	.047	.062	.043	.028	.020	.014	.009	
6.0	.173	.112	.069	.148	.097	.060	.102	.068	.042	.059	.040	.025	.019	.013	.008	
7.0	.166	.105	.063	.142	.091	.055	.098	.064	.039	.057	.038	.023	.018	.012	.008	
8.0	.159	.099	.059	.137	.086	.051	.095	.061	.036	.055	.036	.022	.018	.012	.007	
9.0	.153	.095	.055	.132	.082	.048	.091	.058	.034	.053	.034	.020	.017	.011	.007	
10.0	.147	.090	.052	.127	.078	.046	.088	.055	.032	.051	.033	.019	.017	.011	.006	

C Range: 0 - 360DEG  
C Interval: 30.0DEG  
Test Speed: HIGH  
Temperature:25.3℃  
Operators:  
Test Date:2025-03-12

γ Range: 0 - 180DEG  
γ Interval: 1.0DEG  
Test System:EVERFINE GO-2000B\_V1 SYSTEM V2.00.488  
Humidity:65.0%  
Test Distance:6.360m [K=1.0000]  
Remarks:

UGR(Unified Glare Rating) Table

Test:U:24.00V I:0.2371A P:5.690W PF:1.000 Freq:0Hz Lamp Flux:157.462x1 lm											
NAME: SF16-24V-5050-70-DMX-RGBW(2700K)-G						TYPE:		WEIGHT:			
SPEC.:						DIM.: Length=1m		SERIAL No.:			
MFR.: OLympia lighting						SUR.:		Shielding Angle:			
ceiling/cavity	0.7	0.7	0.5	0.5	0.3	0.7	0.7	0.5	0.5	0.3	
walls	0.5	0.3	0.5	0.3	0.3	0.5	0.3	0.5	0.3	0.3	
working plane	0.2	0.2	0.2	0.2	0.2	0.2	0.2	0.2	0.2	0.2	
Room dimensions		Viewed crosswise					Viewed endwise				
x = 2H y = 2H	2H	22.9	24.4	23.2	24.6	24.9	22.7	24.2	23.0	24.4	24.7
	3H	24.6	26.0	25.0	26.3	26.6	24.3	25.7	24.7	26.0	26.3
	4H	25.4	26.7	25.8	27.1	27.4	25.1	26.4	25.5	26.7	27.1
	6H	26.1	27.4	26.5	27.7	28.1	25.7	26.9	26.1	27.3	27.6
	8H	26.4	27.6	26.8	28.0	28.4	25.9	27.1	26.3	27.5	27.9
	12H	26.7	27.9	27.1	28.2	28.6	26.1	27.3	26.5	27.6	28.0
4H	2H	23.5	24.8	23.9	25.1	25.5	23.4	24.7	23.7	25.0	25.3
	3H	25.5	26.6	25.9	27.0	27.4	25.2	26.4	25.6	26.7	27.1
	4H	26.4	27.5	26.9	27.9	28.3	26.1	27.2	26.6	27.6	28.0
	6H	27.3	28.2	27.8	28.7	29.1	26.9	27.8	27.4	28.3	28.7
	8H	27.7	28.6	28.2	29.0	29.5	27.2	28.1	27.7	28.5	29.0
	12H	28.0	28.8	28.5	29.3	29.8	27.5	28.3	27.9	28.7	29.2
8H	4H	26.8	27.6	27.2	28.1	28.5	26.5	27.4	27.0	27.8	28.3
	6H	27.8	28.6	28.3	29.0	29.6	27.5	28.2	28.0	28.7	29.2
	8H	28.4	29.0	28.9	29.5	30.0	27.9	28.6	28.4	29.1	29.6
	12H	28.8	29.4	29.4	29.9	30.5	28.3	28.9	28.8	29.4	29.9
12H	4H	26.8	27.6	27.3	28.1	28.5	26.6	27.4	27.0	27.8	28.3
	6H	28.0	28.6	28.5	29.1	29.6	27.6	28.3	28.1	28.7	29.3
	8H	28.5	29.1	29.1	29.6	30.2	28.1	28.7	28.6	29.2	29.7
Variations with the observer position at spacings(CIE Pub.117):											
S = 1.0H		+ 0.1 / - 0.2					+ 0.1 / - 0.2				
1.5H		+ 0.2 / - 0.3					+ 0.2 / - 0.3				
2.0H		+ 0.1 / - 0.3					+ 0.1 / - 0.3				

CIE Pub.117, 157.5 lm Total Lamp Luminous Flux Correct (8log(F/F0) = -6.4)  
Area: 0.0165 m2

C Range: 0 - 360DEG  
C Interval: 30.0DEG  
Test Speed: HIGH  
Temperature:25.3℃  
Operators:  
Test Date:2025-03-12

γ Range: 0 - 180DEG  
γ Interval: 1.0DEG  
Test System:EVERFINE GO-2000B\_V1 SYSTEM V2.00.488  
Humidity:65.0%  
Test Distance:6.360m [K=1.0000]  
Remarks:

## UTILIZATION FACTORS TABLE

Test:U:24.00V I:0.2371A P:5.690W PF:1.000 Freq:0Hz Lamp Flux:157.462x1 lm		
NAME: SF16-24V-5050-70-DMX-RGBW(2700K)-G	TYPE:	WEIGHT:
SPEC.:	DIM.: Length=1m	SERIAL No.:
MFR.: OLympia lighting	SUR.:	Shielding Angle:

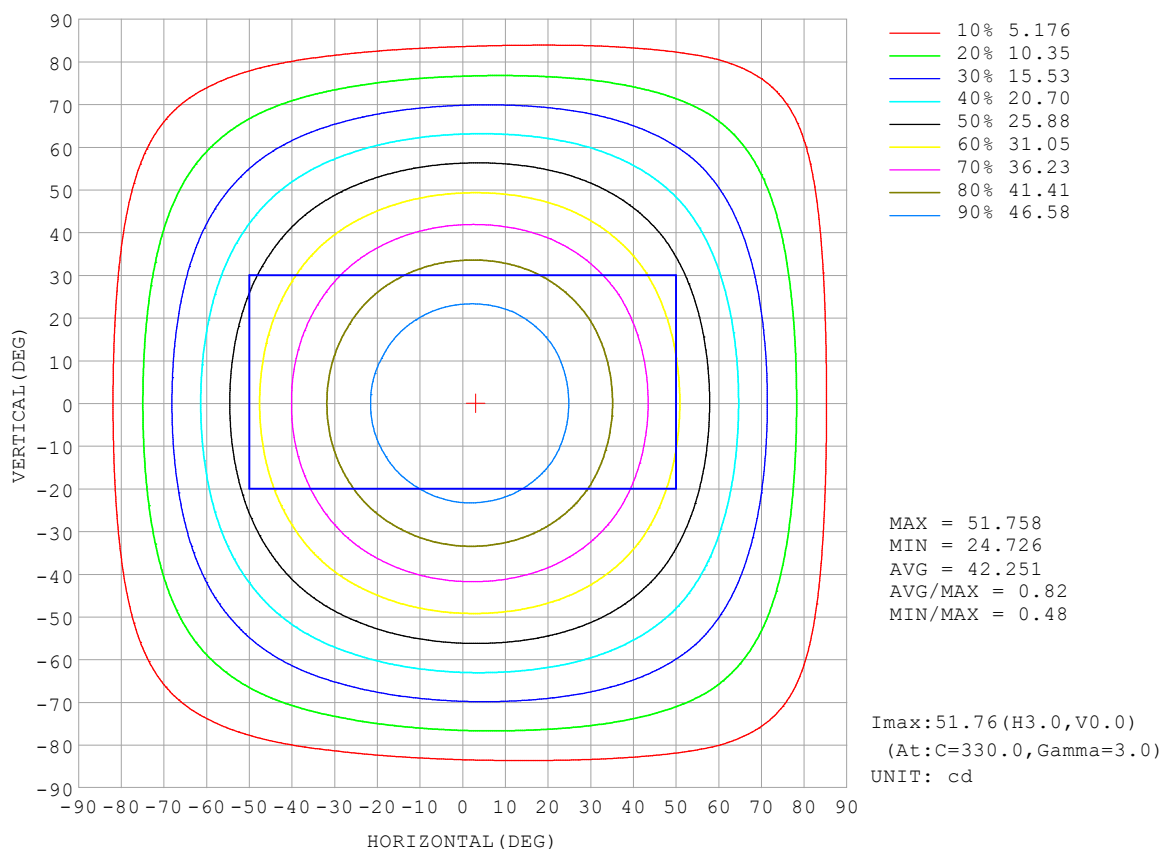
REFLECTANCE										
Ceiling	0.8	0.8	0.8	0.7	0.7	0.7	0.5	0.5	0.5	0
Walls	0.7	0.5	0.3	0.7	0.5	0.3	0.7	0.5	0.3	0
Working plane	0.2	0.2	0.2	0.2	0.2	0.2	0.2	0.2	0.2	0
ROOM INDEX	UTILIZATION FACTORS (PERCENT) $k(RI) \times RCR = 5$									
$k = 0.60$	56	44	37	55	44	37	53	43	37	30
0.80	66	54	46	64	53	46	62	52	45	38
1.00	74	62	55	72	62	54	70	63	54	46
1.25	81	70	63	79	69	62	76	67	61	53
1.50	86	75	68	84	74	68	80	72	66	58
2.00	93	84	77	91	82	76	87	80	74	65
2.50	97	89	82	94	87	81	90	84	79	69
3.00	100	93	87	98	91	86	93	88	83	73
4.00	104	98	93	102	96	92	97	92	88	78
5.00	107	102	97	104	99	95	99	95	92	81
ROOM INDEX	UF (total)									Direct
According to DIN EN 13032-2 2004			Suspended					SHRNOM = 1.25		

C Range: 0 - 360DEG  
 C Interval: 30.0DEG  
 Test Speed: HIGH  
 Temperature: 25.3°C  
 Operators:  
 Test Date: 2025-03-12

γ Range: 0 - 180DEG  
 γ Interval: 1.0DEG  
 Test System: EVERFINE GO-2000B\_V1 SYSTEM V2.00.488  
 Humidity: 65.0%  
 Test Distance: 6.360m [K=1.0000]  
 Remarks:

## ISOCANDELA DIAGRAM

Test:U:24.00V I:0.2371A P:5.690W PF:1.000 Freq:0Hz Lamp Flux:157.462x1 lm		
NAME: SF16-24V-5050-70-DMX-RGBW(2700K)-G	TYPE:	WEIGHT:
SPEC.:	DIM.: Length=1m	SERIAL No.:
MFR.: OLympia lighting	SUR.:	Shielding Angle:



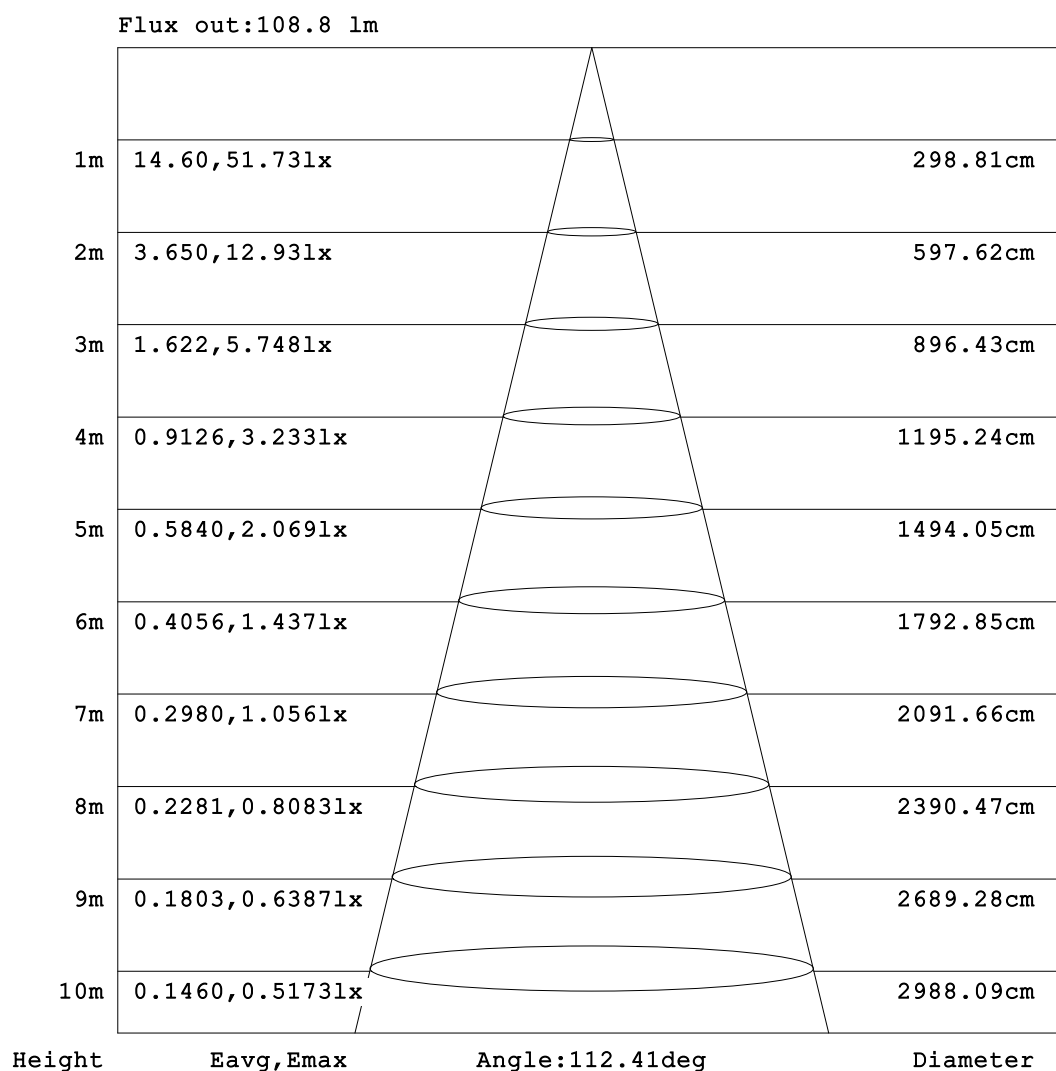
C Range: 0 - 360DEG  
C Interval: 30.0DEG  
Test Speed: HIGH  
Temperature: 25.3°C  
Operators:  
Test Date: 2025-03-12

γ Range: 0 - 180DEG  
γ Interval: 1.0DEG  
Test System: EVERFINE GO-2000B\_V1 SYSTEM V2.00.488  
Humidity: 65.0%  
Test Distance: 6.360m [K=1.0000]  
Remarks:



## AAI Figure

Test:U:24.00V I:0.2371A P:5.690W PF:1.000 Freq:0Hz Lamp Flux:157.462x1 lm		
NAME: SF16-24V-5050-70-DMX-RGBW(2700K)-G	TYPE:	WEIGHT:
SPEC.:	DIM.: Length=1m	SERIAL No.:
MFR.: OLympia lighting	SUR.:	Shielding Angle:



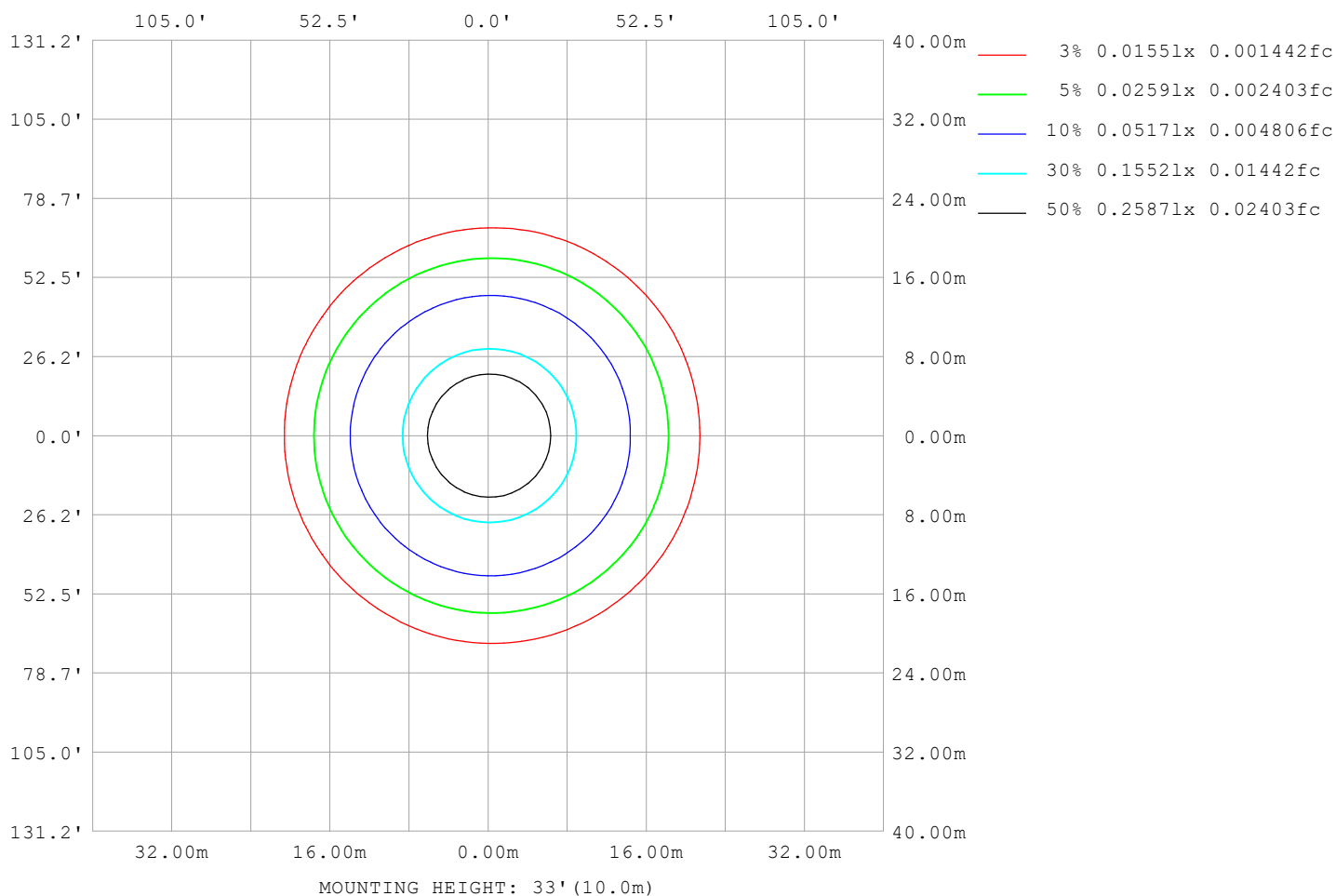
Note:The Curves indicate the illuminated area and the average illumination when the luminaire is at different distance.

C Range: 0 - 360DEG  
C Interval: 30.0DEG  
Test Speed: HIGH  
Temperature:25.3℃  
Operators:  
Test Date:2025-03-12

γ Range: 0 - 180DEG  
γ Interval: 1.0DEG  
Test System:EVERFINE GO-2000B\_V1 SYSTEM V2.00.488  
Humidity:65.0%  
Test Distance:6.360m [K=1.0000]  
Remarks:

## ISOLUX DIAGRAM

Test:U:24.00V I:0.2371A P:5.690W PF:1.000 Freq:0Hz Lamp Flux:157.462x1 lm		
NAME: SF16-24V-5050-70-DMX-RGBW(2700K)-G	TYPE:	WEIGHT:
SPEC.:	DIM.: Length=1m	SERIAL No.:
MFR.: OLympia lighting	SUR.:	Shielding Angle:



C Range: 0 - 360DEG  
C Interval: 30.0DEG  
Test Speed: HIGH  
Temperature: 25.3°C  
Operators:  
Test Date: 2025-03-12

γ Range: 0 - 180DEG  
γ Interval: 1.0DEG  
Test System: EVERFINE GO-2000B\_V1 SYSTEM V2.00.488  
Humidity: 65.0%  
Test Distance: 6.360m [K=1.0000]  
Remarks:

## LED Avg.L Report

Test:U:24.00V I:0.2371A P:5.690W PF:1.000 Freq:0Hz Lamp Flux:157.462x1 lm		
NAME: SF16-24V-5050-70-DMX-RGBW(2700K)-G	TYPE:	WEIGHT:
SPEC.:	DIM.: Length=1m	SERIAL No.:
MFR.: OLympia lighting	SUR.:	Shielding Angle:

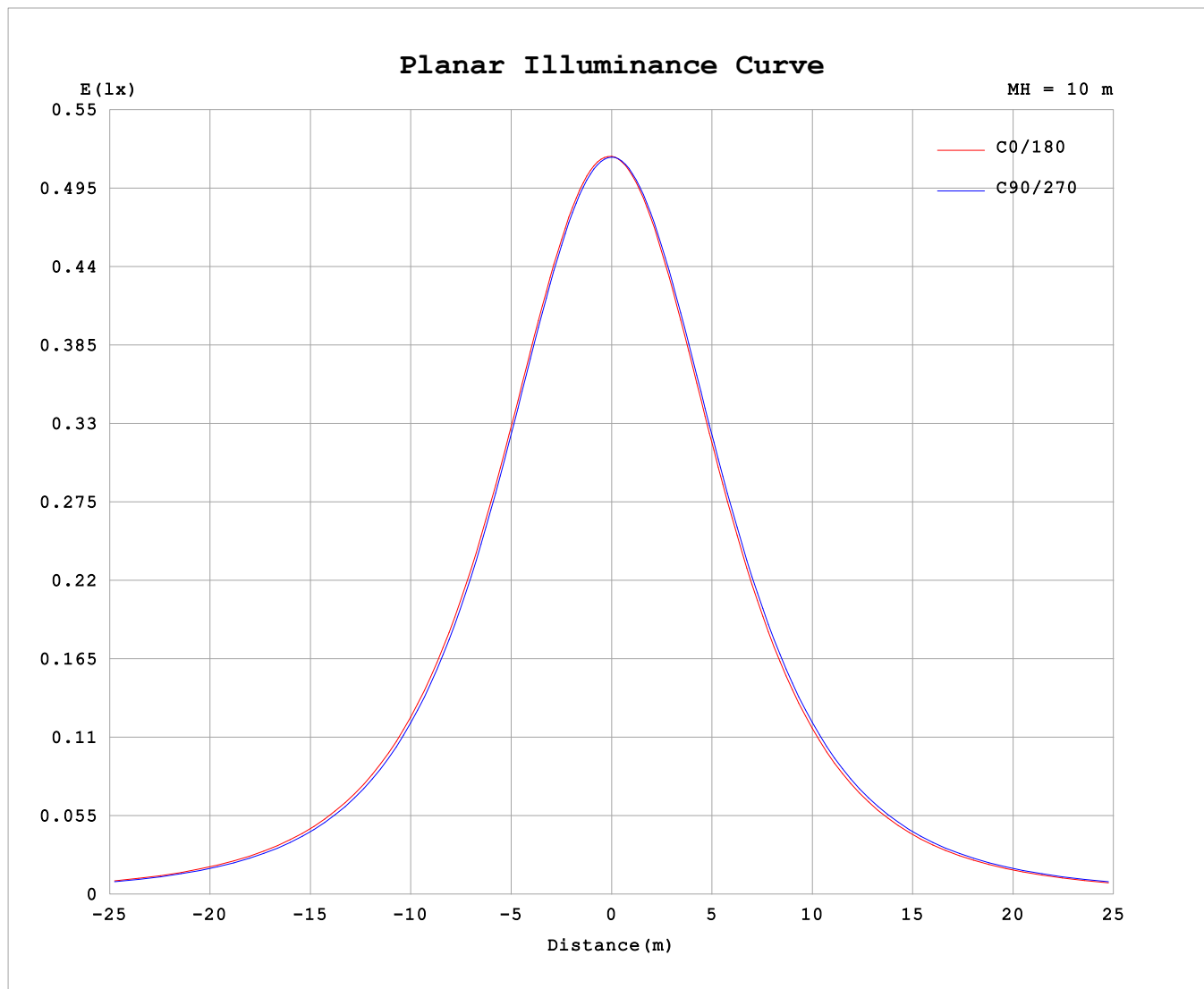
AvgL	cd/m2
L_0~180 (65) av	2749
L_0~180 (75) av	2702
L_0~180 (85) av	3015
L_90~270 (65) av	2753
L_90~270 (75) av	2709
L_90~270 (85) av	2831
L_45 (65) av	2756
L_45 (75) av	2712
L_45 (85) av	2906

Standard: GB/T 29293-2012

C Range: 0 - 360DEG  
C Interval: 30.0DEG  
Test Speed: HIGH  
Temperature:25.3℃  
Operators:  
Test Date:2025-03-12

γ Range: 0 - 180DEG  
γ Interval: 1.0DEG  
Test System:EVERFINE GO-2000B\_V1 SYSTEM V2.00.488  
Humidity:65.0%  
Test Distance:6.360m [K=1.0000]  
Remarks:

## Planar Illuminance Curve



C Range: 0 - 360DEG  
C Interval: 30.0DEG  
Test Speed: HIGH  
Temperature: 25.3 °C  
Operators:  
Test Date: 2025-03-12

$\gamma$  Range: 0 - 180DEG  
 $\gamma$  Interval: 1.0DEG  
Test System: EVERFINE GO-2000B\_V1 SYSTEM V2.00.488  
Humidity: 65.0%  
Test Distance: 6.360m [K=1.0000]  
Remarks:

## LUMINOUS DISTRIBUTION INTENSITY DATA

Test:U:24.00V I:0.2371A P:5.690W PF:1.000 Freq:0Hz Lamp Flux:157.462x1 lm		
NAME: SF16-24V-5050-70-DMX-RGBW(2700K)-G	TYPE:	WEIGHT:
SPEC.:	DIM.: Length=1m	SERIAL No.:
MFR.: Olym pia lighting	SUR.:	Shielding Angle:

Table--1

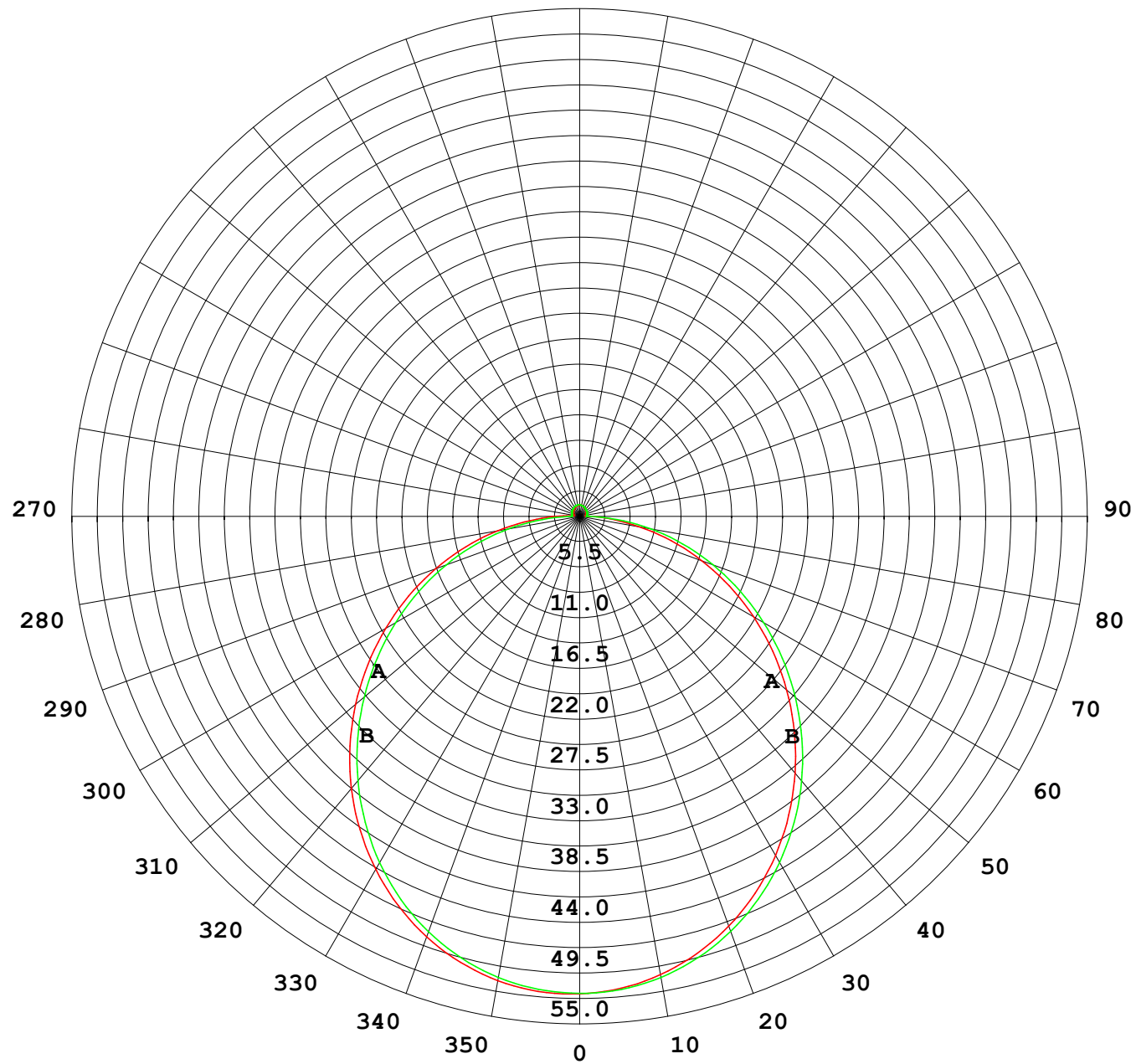
UNIT: cd

C (DEG) γ (DEG)	0	30	60	90	120	150	180	210	240	270	300	330							
0	51.7	51.7	51.7	51.7	51.7	51.7	51.7	51.7	51.7	51.7	51.7	51.7							
5	51.6	51.6	51.6	51.5	51.4	51.3	51.3	51.3	51.4	51.5	51.5	51.7							
10	51.0	51.0	50.9	50.7	50.5	50.4	50.4	50.4	50.5	50.7	50.9	51.1							
15	50.0	50.0	49.8	49.6	49.3	49.1	49.0	49.0	49.3	49.5	49.8	50.0							
20	48.4	48.4	48.2	47.9	47.5	47.3	47.2	47.2	47.5	47.9	48.3	48.5							
25	46.5	46.5	46.2	45.8	45.4	45.1	45.0	45.0	45.4	45.8	46.3	46.5							
30	44.1	44.1	43.8	43.4	42.8	42.5	42.4	42.5	42.9	43.3	43.9	44.2							
35	41.4	41.4	41.0	40.5	40.0	39.6	39.5	39.6	40.0	40.5	41.1	41.5							
40	38.5	38.4	38.0	37.4	36.8	36.4	36.3	36.4	36.8	37.4	38.1	38.5							
45	35.2	35.1	34.7	34.0	33.4	33.0	32.9	33.0	33.4	34.1	34.8	35.2							
50	31.7	31.6	31.1	30.5	29.8	29.4	29.3	29.4	29.8	30.5	31.3	31.7							
55	28.0	27.9	27.5	26.8	26.1	25.6	25.5	25.6	26.1	26.8	27.6	28.1							
60	24.2	24.2	23.7	23.0	22.3	21.8	21.7	21.8	22.3	23.0	23.8	24.3							
65	20.4	20.4	19.9	19.2	18.4	18.0	17.9	18.0	18.5	19.2	20.0	20.5							
70	16.6	16.5	16.1	15.4	14.6	14.2	14.1	14.2	14.7	15.4	16.2	16.6							
75	12.8	12.7	12.2	11.6	10.8	10.4	10.3	10.4	10.9	11.6	12.3	12.8							
80	9.02	8.97	8.42	7.79	7.08	6.65	6.56	6.67	7.14	7.81	8.58	9.08							
85	5.35	5.23	4.65	4.06	3.40	3.30	3.33	3.24	3.44	4.08	4.86	5.35							
90	2.56	2.33	1.56	0.89	1.15	1.38	1.39	1.28	1.03	0.78	1.70	2.43							
95	0.89	0.72	0.75	0.89	0.88	0.81	0.61	0.66	0.74	0.75	0.73	0.78							
100	0.65	0.63	0.77	0.90	0.89	0.84	0.64	0.67	0.78	0.79	0.76	0.65							
105	0.70	0.68	0.85	0.93	0.92	0.88	0.69	0.71	0.82	0.83	0.79	0.68							
110	0.76	0.73	0.92	0.95	0.94	0.91	0.73	0.75	0.86	0.86	0.84	0.72							
115	0.81	0.79	0.95	0.98	0.97	0.94	0.77	0.79	0.90	0.89	0.86	0.76							
120	0.85	0.91	0.98	1.01	1.00	0.98	0.82	0.83	0.93	0.91	0.89	0.81							
125	0.90	0.98	1.00	1.04	1.02	1.01	0.86	0.87	0.95	0.94	0.92	0.84							
130	0.94	1.01	1.03	1.07	1.05	1.04	0.90	0.90	0.99	0.97	0.94	0.89							
135	0.97	1.03	1.05	1.09	1.08	1.07	0.94	0.94	1.03	1.00	0.97	0.89							
140	1.02	1.06	1.08	1.12	1.10	1.11	0.99	0.99	1.06	1.02	1.00	0.91							
145	1.05	1.09	1.11	1.15	1.13	1.13	1.03	1.02	1.09	1.05	1.04	0.95							
150	1.08	1.12	1.14	1.19	1.16	1.16	1.08	1.06	1.13	1.13	1.07	1.00							
155	1.12	1.15	1.18	1.22	1.19	1.19	1.12	1.10	1.16	1.15	1.14	1.04							
160	1.16	1.18	1.20	1.25	1.21	1.22	1.16	1.14	1.19	1.17	1.16	1.08							
165	1.20	1.21	1.23	1.26	1.23	1.25	1.20	1.18	1.22	1.20	1.20	1.12							
170	1.21	1.25	1.24	1.26	1.25	1.26	1.22	1.21	1.24	1.22	1.23	1.20							
175	1.23	1.26	1.26	1.28	1.26	1.26	1.24	1.24	1.26	1.25	1.25	1.22							
180	1.24	1.26	1.27	1.28	1.26	1.26	1.24	1.26	1.26	1.27	1.28	1.26							

C Range: 0 - 360DEG  
C Interval: 30.0DEG  
Test Speed: HIGH  
Temperature:25.3℃  
Operators:  
Test Date:2025-03-12

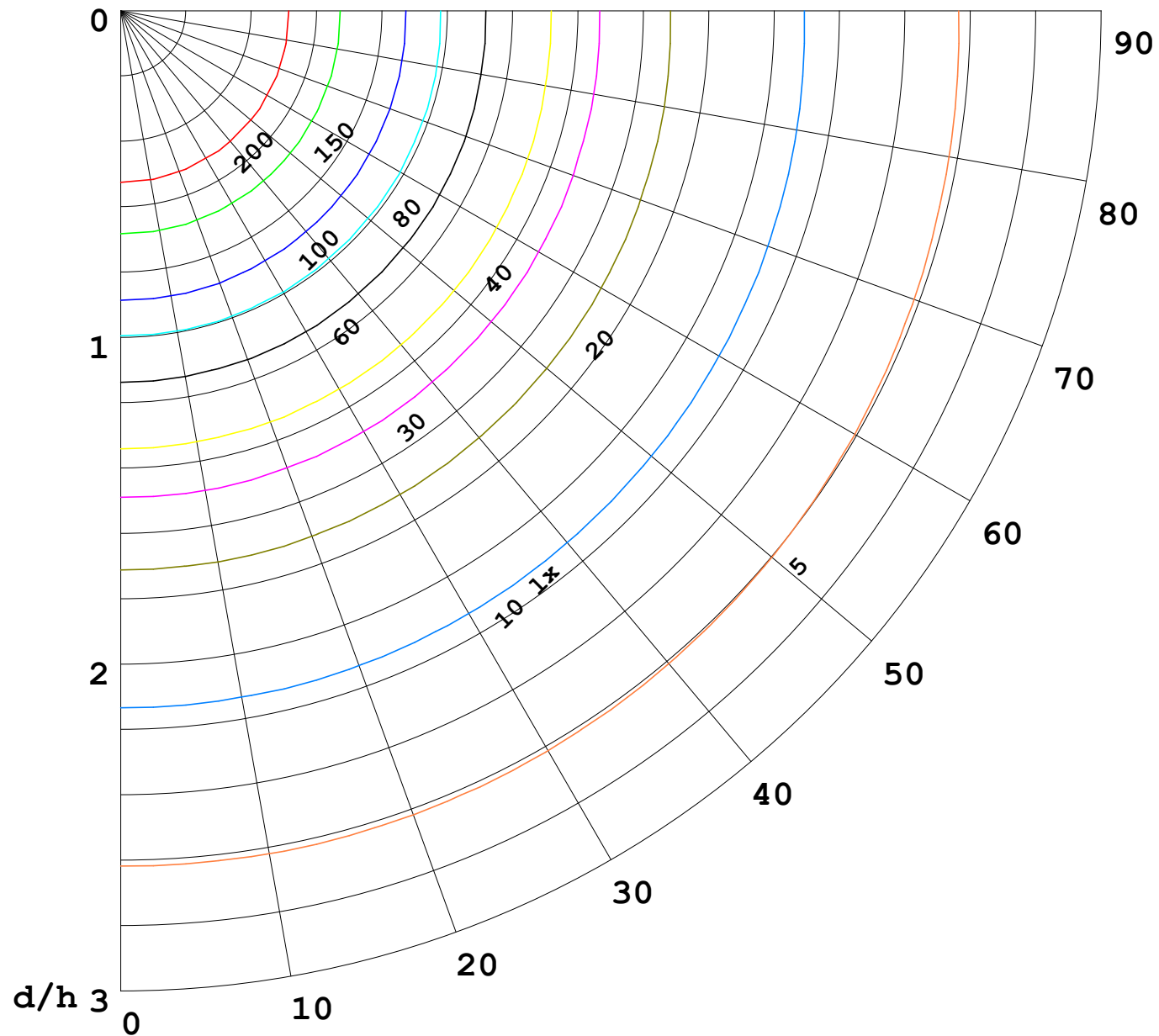
γ Range: 0 - 180DEG  
γ Interval: 1.0DEG  
Test System:EVERFINE GO-2000B\_V1 SYSTEM V2.00.488  
Humidity:65.0%  
Test Distance:6.360m [K=1.0000]  
Remarks:

I (cd)



1000 lm

$\kappa = 1$



F = 1000 lm  
 K = 0.7  
 Hcc = 0.8 m  
 Hfc = 0.0 m  
 Eave = 100 lx

	Pcc	Pw	Pfc
—————	70	50	30
—————	50	30	20

