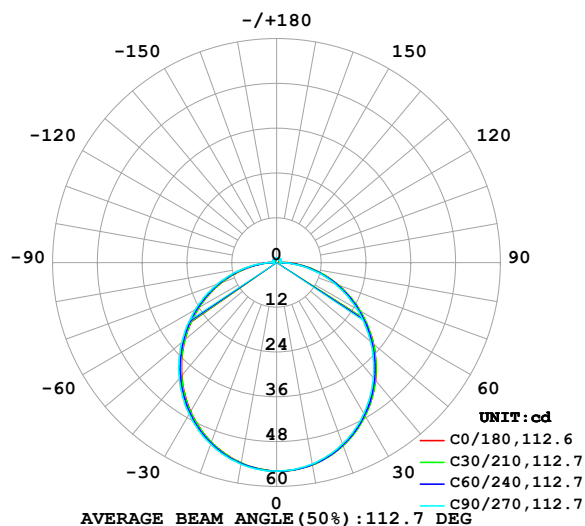


## LUMINAIRE PHOTOMETRIC TEST REPORT

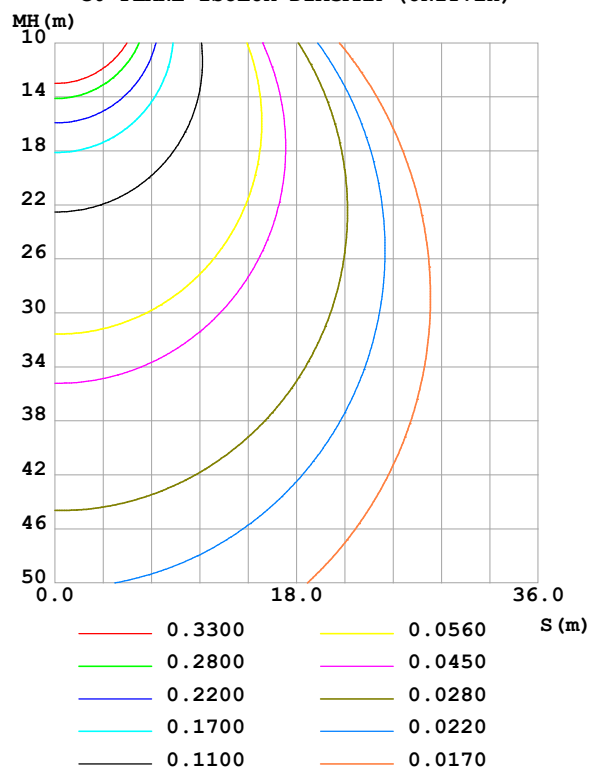
Test:U:24.00V I:0.1881A P:4.514W PF:1.000 Freq:0Hz Lamp Flux:170.593x1 lm		
NAME: SF16-24v-5050-70-DMX-4000K-(1)	TYPE:	WEIGHT:
SPEC.:	DIM.: Length=1m	SERIAL No.:
MFR.: OLympia lighting	SUR.:	Shielding Angle:

DATA OF LAMP		PHOTOMETRIC DATA				Eff: 37.79 lm/W
MODEL	5050	I <sub>max</sub> (cd)	55.87	S/MH(C0/180)	1.23	
NOMINAL POWER(W)		LOR(%)	100.0	S/MH(C90/270)	1.25	
RATED VOLTAGE(V)	24	TOTAL FLUX(lm)	170.60	η UP,DN(C0-180)	1.9,48.1	
NOMINAL FLUX(lm)	170.593	CIE CLASS	DIRECT	η UP,DN(C180-360)	1.9,48.0	
LAMPS INSIDE	1	η up (%)	3.9	CIBSE SHR NOM	1.25	
TEST VOLTAGE(V)		η down (%)	96.2	CIBSE SHR MAX	1.35	

LUMINOUS INTENSITY DISTRIBUTION DIAGRAM



C0 PLANE ISOLUX DIAGRAM (UNIT:lx)



C Range: 0 - 360DEG  
C Interval: 30.0DEG  
Test Speed: HIGH  
Temperature:25.3℃  
Operators:  
Test Date:2025-03-12

γ Range: 0 - 180DEG  
γ Interval: 1.0DEG  
Test System:EVERFINE GO-2000B\_V1 SYSTEM V2.00.488  
Humidity:65.0%  
Test Distance:6.360m [K=1.0000]  
Remarks:

## ZONAL FLUX DIAGRAM

## ZONAL FLUX DIAGRAM:

$\gamma$	C0	C45	C90	C135	C180	C225	C270	C315	$\gamma$	$\Phi$ zone	$\Phi$ total	%lum, lamp
10	55.05	55.01	54.80	54.59	54.53	54.62	54.85	55.05	0- 10	5.282	5.282	3.1,3.1
20	52.16	52.08	51.72	51.31	51.20	51.40	51.80	52.18	10- 20	15.10	20.38	11.9,11.9
30	47.45	47.29	46.76	46.24	46.10	46.38	46.93	47.45	20- 30	22.81	43.19	25.3,25.3
40	41.23	40.99	40.33	39.72	39.58	39.93	40.60	41.23	30- 40	27.40	70.59	41.4,41.4
50	33.87	33.59	32.84	32.18	32.06	32.44	33.19	33.89	40- 50	28.42	99.01	58,58
60	25.83	25.55	24.77	24.07	23.97	24.37	25.14	25.88	50- 60	25.96	125.0	73.3,73.3
70	17.55	17.28	16.52	15.79	15.71	16.12	16.88	17.60	60- 70	20.62	145.6	85.3,85.3
80	9.342	9.080	8.337	7.631	7.570	7.971	8.700	9.394	70- 80	13.28	158.9	93.1,93.1
90	2.586	2.017	0.9121	1.385	1.681	1.486	1.017	2.176	80- 90	5.161	164.0	96.2,96.2
100	0.7850	0.8923	0.9438	0.8662	0.6762	0.8636	1.019	0.8796	90-100	1.112	165.1	96.8,96.8
110	0.8176	0.9387	0.9767	0.9469	0.7630	0.9387	1.074	0.9223	100-110	0.9469	166.1	97.4,97.4
120	0.9130	1.004	1.019	1.022	0.8611	1.005	1.112	0.9829	110-120	0.9539	167.0	97.9,97.9
130	1.005	1.073	1.073	1.092	0.9537	1.072	1.149	1.038	120-130	0.9220	168.0	98.5,98.5
140	1.092	1.136	1.132	1.164	1.049	1.131	1.186	1.088	130-140	0.8449	168.8	99,99
150	1.167	1.201	1.233	1.229	1.150	1.196	1.229	1.152	140-150	0.7278	169.5	99.4,99.4
160	1.242	1.249	1.325	1.293	1.245	1.262	1.276	1.224	150-160	0.5681	170.1	99.7,99.7
170	1.286	1.310	1.351	1.343	1.306	1.323	1.319	1.306	160-170	0.3651	170.5	99.9,99.9
180	1.318	1.349	1.365	1.361	1.318	1.350	1.368	1.361	170-180	0.1272	170.6	100,100
DEG	LUMINOUS INTENSITY:cd									UNIT:lm		

Conical surface Flux(90deg): 84.901 lm

%lum = 49.8%

%lamp = 49.8%

Conical surface Flux(130deg): 136.1 lm

%lum = 79.8%

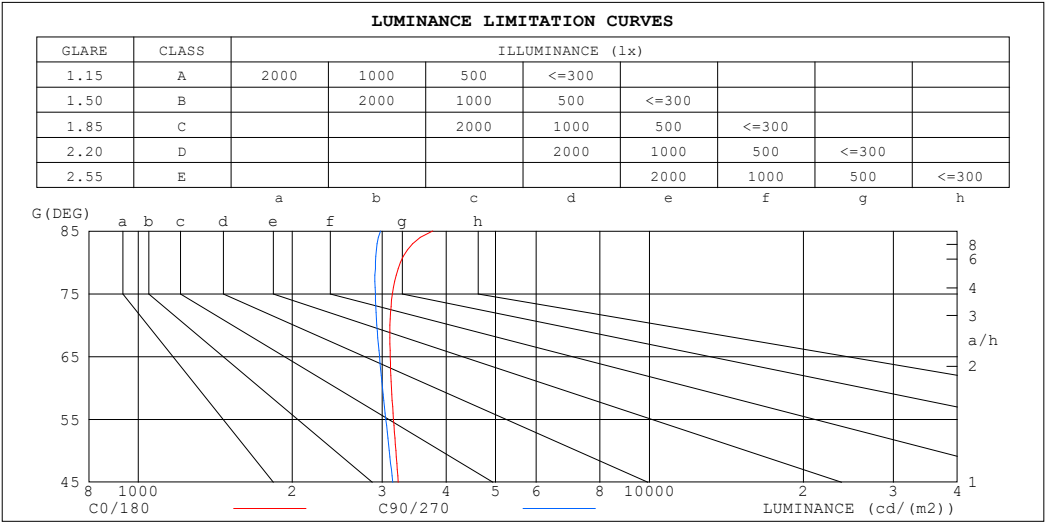
%lamp = 79.8%

C Range: 0 - 360DEG  
 C Interval: 30.0DEG  
 Test Speed: HIGH  
 Temperature:25.3℃  
 Operators:  
 Test Date:2025-03-12

$\gamma$  Range: 0 - 180DEG  
 $\gamma$  Interval: 1.0DEG  
 Test System:EVERFINE GO-2000B\_V1 SYSTEM V2.00.488  
 Humidity:65.0%  
 Test Distance:6.360m [K=1.0000]  
 Remarks:

LUMINANCE LIMITATION CURVES

Test:U:24.00V I:0.1881A P:4.514W PF:1.000 Freq:0Hz Lamp Flux:170.593x1 lm		
NAME: SF16-24v-5050-70-DMX-4000K-(1)	TYPE:	WEIGHT:
SPEC.:	DIM.: Length=1m	SERIAL No.:
MFR.: OLympia lighting	SUR.:	Shielding Angle:



LUMINANCE cd/(m2)		
G (DEG)	C0/180	C90/270
85	3767	2979
80	3257	2910
75	3140	2910
70	3105	2928
65	3109	2963
60	3127	3003
55	3156	3049
50	3190	3097
45	3224	3143

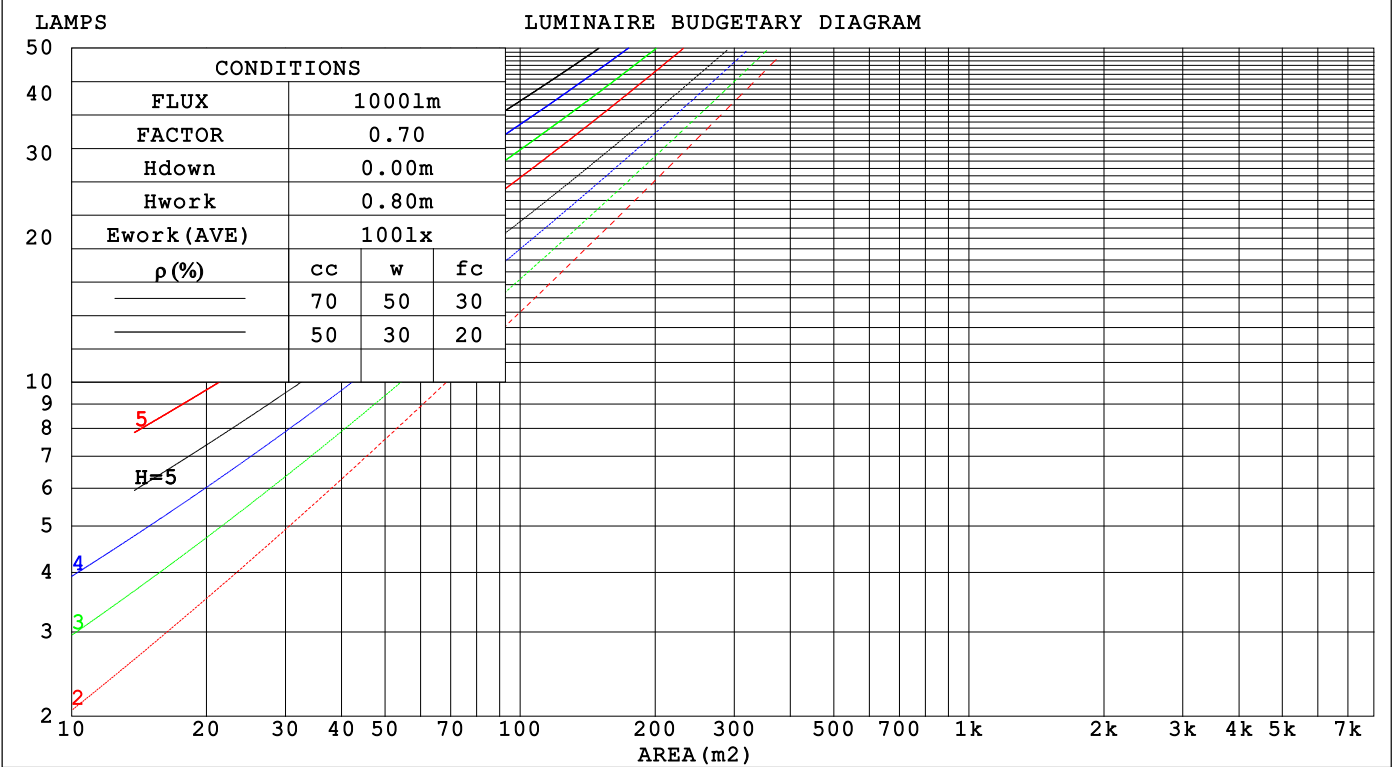
C Range: 0 - 360DEG  
C Interval: 30.0DEG  
Test Speed: HIGH  
Temperature:25.3℃  
Operators:  
Test Date:2025-03-12

γ Range: 0 - 180DEG  
γ Interval: 1.0DEG  
Test System:EVERFINE GO-2000B\_V1 SYSTEM V2.00.488  
Humidity:65.0%  
Test Distance:6.360m [K=1.0000]  
Remarks:

CU AND LUMINAIRE BUDGETARY ESTIMATE DIAGRAM

Test:U:24.00V I:0.1881A P:4.514W PF:1.000 Freq:0Hz		
Lamp Flux:170.593x1 lm		
NAME: SF16-24v-5050-70-DMX-4000K-(1)	TYPE:	WEIGHT:
SPEC.:	DIM.: Length=1m	SERIAL No.:
MFR.: OLYMPIA lighting	SUR.:	Shielding Angle:

pcc	80%			70%			50%			30%			10%			0
p <sub>w</sub>	50%	30%	10%	50%	30%	10%	50%	30%	10%	50%	30%	10%	50%	30%	10%	0
p <sub>fc</sub>	20%			20%			20%			20%			20%			0
RCR	RCR:Room Cavity Ratio															



C Range: 0 - 360DEG  
C Interval: 30.0DEG  
Test Speed: HIGH  
Temperature:25.3℃  
Operators:  
Test Date:2025-03-12

γ Range: 0 - 180DEG  
γ Interval: 1.0DEG  
Test System:EVERFINE GO-2000B\_V1 SYSTEM V2.00.488  
Humidity:65.0%  
Test Distance:6.360m [K=1.0000]  
Remarks:

## WEC AND CCEC

Test:U:24.00V I:0.1881A P:4.514W PF:1.000 Freq:0Hz Lamp Flux:170.593x1 lm		
NAME: SF16-24v-5050-70-DMX-4000K-(1)	TYPE:	WEIGHT:
SPEC.:	DIM.: Length=1m	SERIAL No.:
MFR.: OLYMPIA lighting	SUR.:	Shielding Angle:

pcc	80%			70%			50%			30%			10%			0
pw	50%	30%	10%	50%	30%	10%	50%	30%	10%	50%	30%	10%	50%	30%	10%	0
pfc	20%			20%			20%			20%			20%			0
RCR	RCR:Room Cavity Ratio						Wall Exitance Coefficients(WEC)									
0.0																
1.0	.326	.185	.059	.318	.181	.058	.302	.173	.055	.288	.166	.053	.275	.159	.051	
2.0	.301	.165	.051	.293	.162	.050	.280	.156	.048	.267	.150	.047	.255	.144	.046	
3.0	.276	.147	.044	.269	.144	.043	.257	.139	.042	.245	.134	.041	.235	.130	.040	
4.0	.253	.131	.039	.247	.129	.038	.236	.125	.037	.226	.121	.037	.216	.118	.036	
5.0	.233	.119	.034	.228	.117	.034	.218	.113	.033	.209	.110	.033	.200	.107	.032	
6.0	.215	.108	.031	.211	.106	.031	.202	.103	.030	.194	.101	.030	.186	.098	.029	
7.0	.200	.099	.028	.196	.098	.028	.188	.095	.027	.180	.092	.027	.173	.090	.026	
8.0	.186	.091	.026	.183	.090	.025	.175	.088	.025	.169	.085	.025	.162	.083	.024	
9.0	.175	.084	.024	.171	.083	.023	.165	.081	.023	.158	.079	.023	.153	.078	.022	
10.0	.164	.079	.022	.161	.078	.022	.155	.076	.021	.149	.074	.021	.144	.072	.021	

pcc	80%			70%			50%			30%			10%			0
pw	50%	30%	10%	50%	30%	10%	50%	30%	10%	50%	30%	10%	50%	30%	10%	0
pfc	20%			20%			20%			20%			20%			0
RCR	RCR:Room Cavity Ratio						Ceiling Cavity Exitance Coefficients (CCEC)									
0.0	.220	.220	.220	.188	.188	.188	.128	.128	.128	.074	.074	.074	.024	.024	.024	
1.0	.211	.186	.163	.181	.159	.140	.123	.110	.097	.071	.063	.056	.023	.020	.018	
2.0	.203	.162	.127	.174	.139	.110	.119	.096	.076	.069	.056	.045	.022	.018	.015	
3.0	.196	.144	.103	.168	.124	.090	.115	.086	.063	.066	.050	.037	.021	.016	.012	
4.0	.188	.131	.088	.161	.113	.076	.111	.079	.054	.064	.046	.032	.021	.015	.010	
5.0	.180	.121	.077	.155	.105	.067	.107	.073	.047	.062	.043	.028	.020	.014	.009	
6.0	.173	.113	.069	.149	.097	.060	.103	.068	.043	.060	.040	.025	.019	.013	.008	
7.0	.166	.106	.063	.143	.092	.055	.099	.064	.039	.057	.038	.023	.019	.012	.008	
8.0	.160	.100	.059	.137	.087	.051	.095	.061	.036	.055	.036	.022	.018	.012	.007	
9.0	.154	.095	.056	.132	.083	.048	.092	.058	.034	.053	.034	.021	.017	.011	.007	
10.0	.148	.091	.053	.127	.079	.046	.088	.055	.033	.052	.033	.020	.017	.011	.006	

C Range: 0 - 360DEG  
C Interval: 30.0DEG  
Test Speed: HIGH  
Temperature:25.3℃  
Operators:  
Test Date:2025-03-12

γ Range: 0 - 180DEG  
γ Interval: 1.0DEG  
Test System:EVERFINE GO-2000B\_V1 SYSTEM V2.00.488  
Humidity:65.0%  
Test Distance:6.360m [K=1.0000]  
Remarks:

## UGR(Unified Glare Rating) Table

Test:U:24.00V I:0.1881A P:4.514W PF:1.000 Freq:0Hz Lamp Flux:170.593x1 lm											
NAME: SF16-24v-5050-70-DMX-4000K-(1)						TYPE:		WEIGHT:			
SPEC.:						DIM.: Length=1m		SERIAL No.:			
MFR.: OLympia lighting						SUR.:		Shielding Angle:			
ceiling/cavity	0.7	0.7	0.5	0.5	0.3	0.7	0.7	0.5	0.5	0.3	
walls	0.5	0.3	0.5	0.3	0.3	0.5	0.3	0.5	0.3	0.3	
working plane	0.2	0.2	0.2	0.2	0.2	0.2	0.2	0.2	0.2	0.2	
Room dimensions		Viewed crosswise					Viewed endwise				
x = 2H y = 2H	2H	22.8	24.2	23.1	24.5	24.8	22.6	24.1	22.9	24.4	24.6
	3H	24.5	25.9	24.8	26.2	26.5	24.3	25.6	24.6	25.9	26.3
	4H	25.3	26.6	25.6	26.9	27.2	25.0	26.3	25.4	26.6	27.0
	6H	26.0	27.2	26.3	27.5	27.9	25.6	26.9	26.0	27.2	27.6
	8H	26.2	27.4	26.6	27.8	28.2	25.9	27.1	26.3	27.4	27.8
	12H	26.5	27.6	26.9	28.0	28.4	26.0	27.2	26.5	27.6	27.9
4H	2H	23.4	24.7	23.8	25.0	25.4	23.3	24.6	23.6	24.9	25.2
	3H	25.3	26.5	25.7	26.8	27.2	25.1	26.3	25.6	26.7	27.0
	4H	26.3	27.3	26.7	27.7	28.1	26.0	27.1	26.5	27.5	27.9
	6H	27.1	28.0	27.6	28.5	28.9	26.8	27.7	27.3	28.2	28.6
	8H	27.5	28.3	27.9	28.8	29.2	27.1	28.0	27.6	28.4	28.9
	12H	27.8	28.6	28.3	29.0	29.5	27.4	28.2	27.8	28.6	29.1
8H	4H	26.6	27.5	27.1	27.9	28.4	26.4	27.3	26.9	27.7	28.2
	6H	27.6	28.4	28.1	28.8	29.4	27.4	28.1	27.9	28.6	29.1
	8H	28.1	28.8	28.6	29.3	29.8	27.8	28.4	28.3	28.9	29.5
	12H	28.6	29.1	29.1	29.7	30.2	28.2	28.7	28.7	29.2	29.8
12H	4H	26.6	27.4	27.1	27.9	28.4	26.4	27.2	26.9	27.7	28.2
	6H	27.7	28.4	28.3	28.9	29.4	27.5	28.1	28.0	28.6	29.2
	8H	28.3	28.8	28.8	29.4	29.9	28.0	28.5	28.5	29.0	29.6
Variations with the observer position at spacings(CIE Pub.117):											
S = 1.0H		+ 0.1 / - 0.2					+ 0.1 / - 0.2				
1.5H		+ 0.2 / - 0.3					+ 0.2 / - 0.3				
2.0H		+ 0.1 / - 0.3					+ 0.1 / - 0.3				

CIE Pub.117, 170.6 lm Total Lamp Luminous Flux Correct (8log(F/F0) = -6.1)  
Area: 0.0165 m2

C Range: 0 - 360DEG  
C Interval: 30.0DEG  
Test Speed: HIGH  
Temperature:25.3℃  
Operators:  
Test Date:2025-03-12

γ Range: 0 - 180DEG  
γ Interval: 1.0DEG  
Test System:EVERFINE GO-2000B\_V1 SYSTEM V2.00.488  
Humidity:65.0%  
Test Distance:6.360m [K=1.0000]  
Remarks:

## UTILIZATION FACTORS TABLE

Test:U:24.00V I:0.1881A P:4.514W PF:1.000 Freq:0Hz Lamp Flux:170.593x1 lm		
NAME: SF16-24v-5050-70-DMX-4000K-(1)	TYPE:	WEIGHT:
SPEC.:	DIM.: Length=1m	SERIAL No.:
MFR.: OLympia lighting	SUR.:	Shielding Angle:

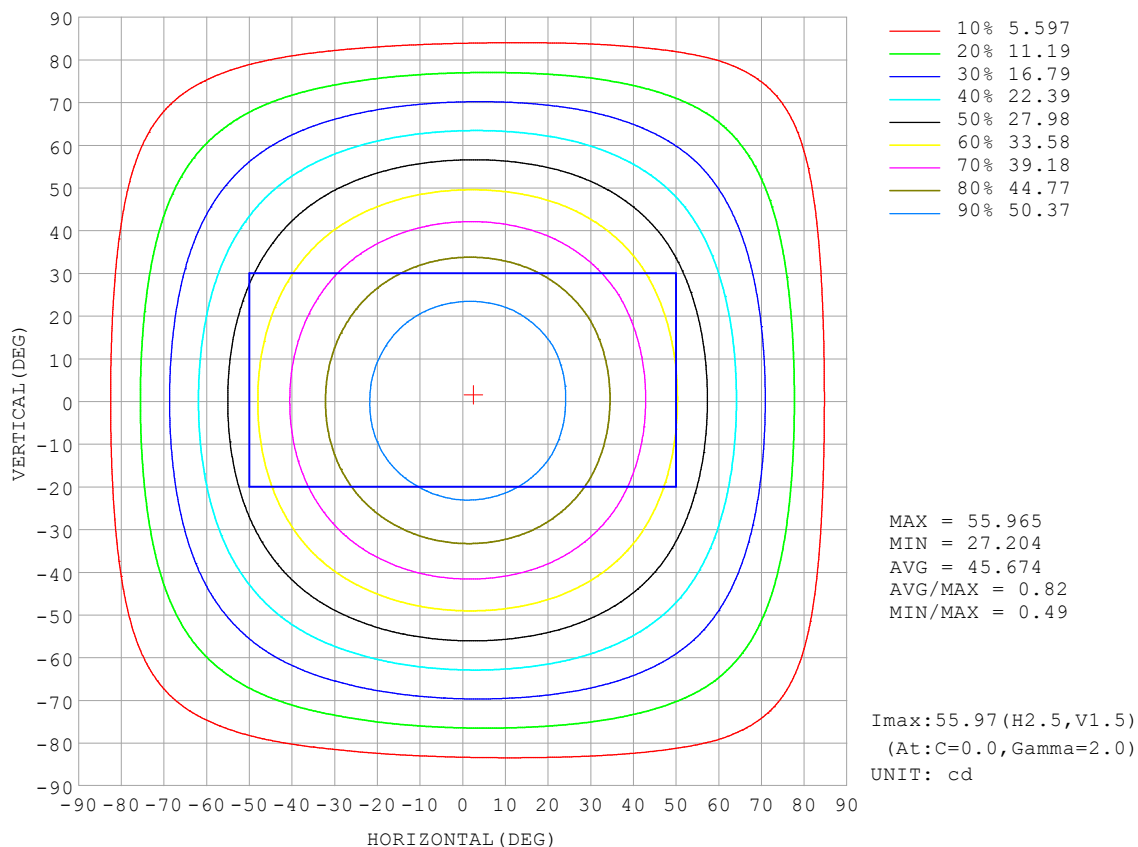
REFLECTANCE										
Ceiling	0.8	0.8	0.8	0.7	0.7	0.7	0.5	0.5	0.5	0
Walls	0.7	0.5	0.3	0.7	0.5	0.3	0.7	0.5	0.3	0
Working plane	0.2	0.2	0.2	0.2	0.2	0.2	0.2	0.2	0.2	0
ROOM INDEX	UTILIZATION FACTORS (PERCENT) $k(RI) \times RCR = 5$									
$k = 0.60$	56	44	37	55	44	37	53	43	36	30
0.80	65	54	46	64	53	46	62	52	45	38
1.00	74	62	55	72	62	54	70	63	54	46
1.25	81	70	62	79	69	62	76	67	61	53
1.50	86	75	68	84	74	67	80	72	66	58
2.00	93	84	77	91	82	76	87	80	74	65
2.50	97	88	82	94	87	81	90	84	79	69
3.00	100	93	87	98	91	86	93	88	83	73
4.00	104	98	93	102	96	92	97	92	88	78
5.00	107	102	97	104	99	95	99	95	92	81
ROOM INDEX	UF (total)									Direct
According to DIN EN 13032-2 2004			Suspended					SHRNOM = 1.25		

C Range: 0 - 360DEG  
 C Interval: 30.0DEG  
 Test Speed: HIGH  
 Temperature: 25.3 °C  
 Operators:  
 Test Date: 2025-03-12

γ Range: 0 - 180DEG  
 γ Interval: 1.0DEG  
 Test System: EVERFINE GO-2000B\_V1 SYSTEM V2.00.488  
 Humidity: 65.0%  
 Test Distance: 6.360m [K=1.0000]  
 Remarks:

## ISOCANDELA DIAGRAM

Test:U:24.00V I:0.1881A P:4.514W PF:1.000 Freq:0Hz Lamp Flux:170.593x1 lm		
NAME: SF16-24v-5050-70-DMX-4000K-(1)	TYPE:	WEIGHT:
SPEC.:	DIM.: Length=1m	SERIAL No.:
MFR.: OLympia lighting	SUR.:	Shielding Angle:



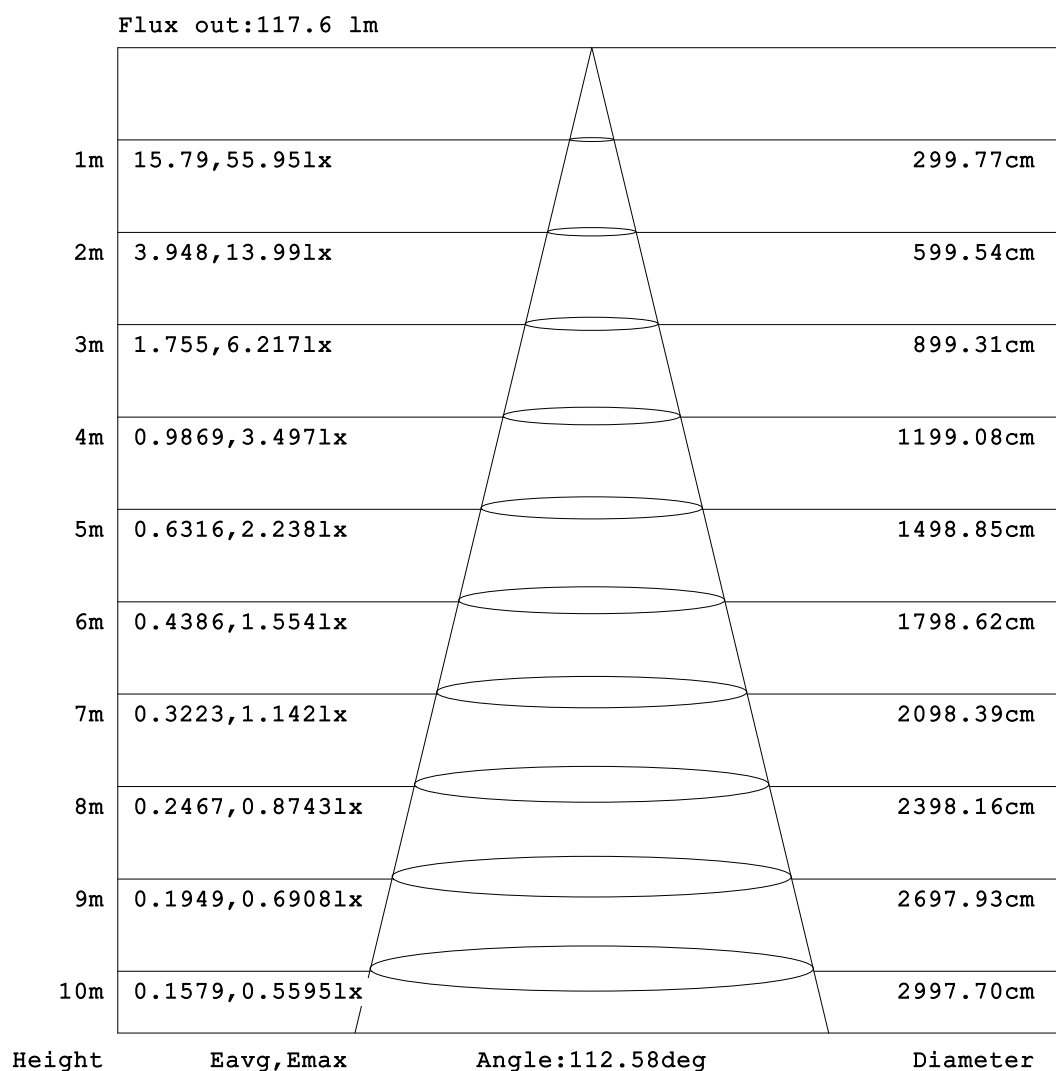
C Range: 0 - 360DEG  
C Interval: 30.0DEG  
Test Speed: HIGH  
Temperature:25.3℃  
Operators:  
Test Date:2025-03-12

γ Range: 0 - 180DEG  
γ Interval: 1.0DEG  
Test System:EVERFINE GO-2000B\_V1 SYSTEM V2.00.488  
Humidity:65.0%  
Test Distance:6.360m [K=1.0000]  
Remarks:



## AAI Figure

Test:U:24.00V I:0.1881A P:4.514W PF:1.000 Freq:0Hz Lamp Flux:170.593x1 lm		
NAME: SF16-24v-5050-70-DMX-4000K-(1)	TYPE:	WEIGHT:
SPEC.:	DIM.: Length=1m	SERIAL No.:
MFR.: OLympia lighting	SUR.:	Shielding Angle:



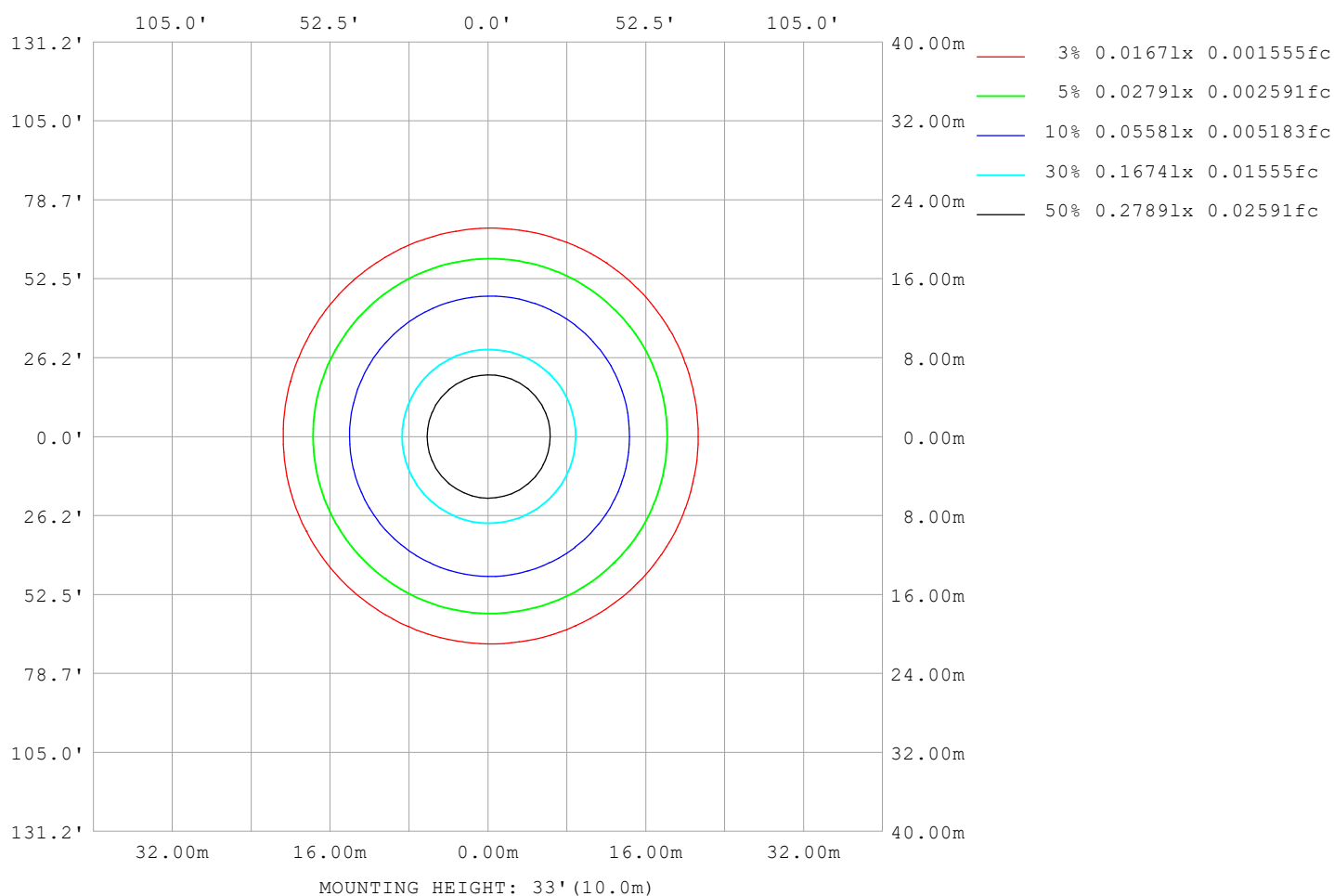
Note:The Curves indicate the illuminated area and the average illumination when the luminaire is at different distance.

C Range: 0 - 360DEG  
C Interval: 30.0DEG  
Test Speed: HIGH  
Temperature:25.3℃  
Operators:  
Test Date:2025-03-12

γ Range: 0 - 180DEG  
γ Interval: 1.0DEG  
Test System:EVERFINE GO-2000B\_V1 SYSTEM V2.00.488  
Humidity:65.0%  
Test Distance:6.360m [K=1.0000]  
Remarks:

## ISOLUX DIAGRAM

Test:U:24.00V I:0.1881A P:4.514W PF:1.000 Freq:0Hz Lamp Flux:170.593x1 lm		
NAME: SF16-24v-5050-70-DMX-4000K-(1)	TYPE:	WEIGHT:
SPEC.:	DIM.: Length=1m	SERIAL No.:
MFR.: OLympia lighting	SUR.:	Shielding Angle:



C Range: 0 - 360DEG  
C Interval: 30.0DEG  
Test Speed: HIGH  
Temperature: 25.3°C  
Operators:  
Test Date: 2025-03-12

γ Range: 0 - 180DEG  
γ Interval: 1.0DEG  
Test System: EVERFINE GO-2000B\_V1 SYSTEM V2.00.488  
Humidity: 65.0%  
Test Distance: 6.360m [K=1.0000]  
Remarks:

## LED Avg.L Report

Test:U:24.00V I:0.1881A P:4.514W PF:1.000 Freq:0Hz Lamp Flux:170.593x1 lm		
NAME: SF16-24v-5050-70-DMX-4000K-(1)	TYPE:	WEIGHT:
SPEC.:	DIM.: Length=1m	SERIAL No.:
MFR.: OLympia lighting	SUR.:	Shielding Angle:

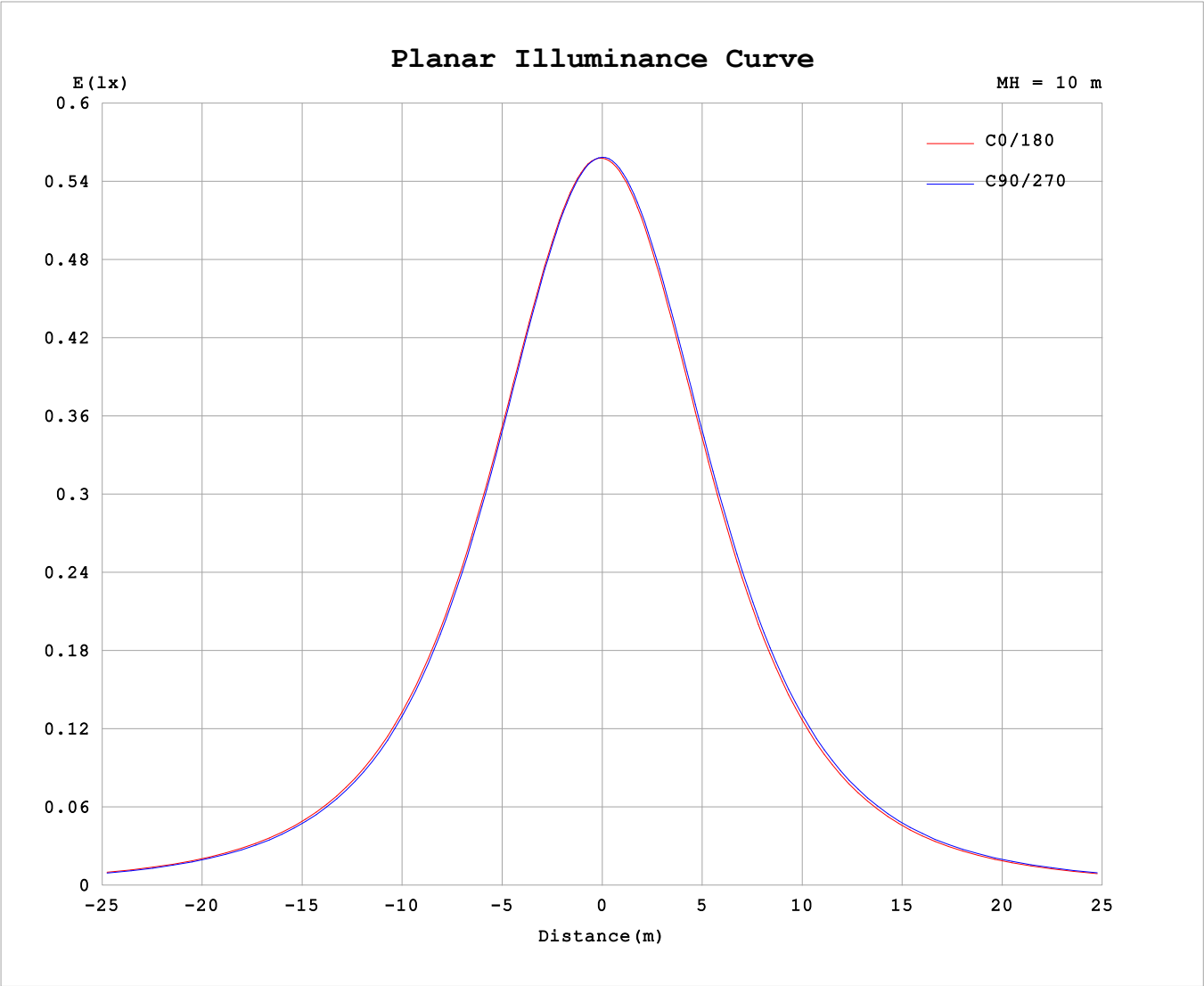
AvgL	cd/m2
L_0~180 (65) av	2979
L_0~180 (75) av	2932
L_0~180 (85) av	3253
L_90~270 (65) av	2989
L_90~270 (75) av	2950
L_90~270 (85) av	3103
L_45 (65) av	2989
L_45 (75) av	2948
L_45 (85) av	3168

Standard: GB/T 29293-2012

C Range: 0 - 360DEG  
C Interval: 30.0DEG  
Test Speed: HIGH  
Temperature:25.3℃  
Operators:  
Test Date:2025-03-12

γ Range: 0 - 180DEG  
γ Interval: 1.0DEG  
Test System:EVERFINE GO-2000B\_V1 SYSTEM V2.00.488  
Humidity:65.0%  
Test Distance:6.360m [K=1.0000]  
Remarks:

Planar Illuminance Curve



C Range: 0 - 360DEG	γ Range: 0 - 180DEG
C Interval: 30.0DEG	γ Interval: 1.0DEG
Test Speed: HIGH	Test System:EVERFINE GO-2000B_V1 SYSTEM V2.00.488
Temperature:25.3℃	Humidity:65.0%
Operators:	Test Distance:6.360m [K=1.0000]
Test Date:2025-03-12	Remarks:

## LUMINOUS DISTRIBUTION INTENSITY DATA

Test:U:24.00V I:0.1881A P:4.514W PF:1.000 Freq:0Hz Lamp Flux:170.593x1 lm											
NAME: SF16-24v-5050-70-DMX-4000K-(1)						TYPE:			WEIGHT:		
SPEC.:						DIM.: Length=1m			SERIAL No.:		
MFR.: OLYMPIA lighting						SUR.:			Shielding Angle:		

Table--1

UNIT: cd

C (DEG) γ (DEG)	0	30	60	90	120	150	180	210	240	270	300	330							
0	55.9	55.9	55.9	55.9	55.9	55.9	55.9	55.9	55.9	55.9	55.9	55.9							
5	55.7	55.7	55.7	55.6	55.5	55.4	55.5	55.5	55.5	55.6	55.7	55.8							
10	55.1	55.1	55.0	54.8	54.6	54.5	54.5	54.5	54.7	54.9	55.0	55.1							
15	53.8	53.9	53.7	53.5	53.3	53.1	53.1	53.1	53.4	53.6	53.8	53.9							
20	52.2	52.2	52.0	51.7	51.4	51.2	51.2	51.3	51.5	51.8	52.1	52.2							
25	50.0	50.0	49.8	49.5	49.1	48.9	48.9	48.9	49.3	49.6	50.0	50.1							
30	47.5	47.4	47.1	46.8	46.4	46.1	46.1	46.2	46.6	46.9	47.4	47.5							
35	44.5	44.5	44.2	43.7	43.3	43.0	43.0	43.1	43.5	44.0	44.4	44.6							
40	41.2	41.2	40.8	40.3	39.9	39.6	39.6	39.7	40.1	40.6	41.1	41.4							
45	37.7	37.6	37.2	36.7	36.2	35.9	35.9	36.1	36.5	37.0	37.5	37.8							
50	33.9	33.8	33.4	32.8	32.3	32.0	32.1	32.2	32.7	33.2	33.8	34.0							
55	29.9	29.8	29.4	28.9	28.3	28.0	28.1	28.2	28.7	29.2	29.8	30.1							
60	25.8	25.8	25.3	24.8	24.2	23.9	24.0	24.1	24.6	25.1	25.8	26.0							
65	21.7	21.6	21.2	20.7	20.1	19.8	19.8	20.0	20.5	21.0	21.6	21.9							
70	17.5	17.5	17.1	16.5	15.9	15.7	15.7	15.9	16.3	16.9	17.5	17.7							
75	13.4	13.4	12.9	12.4	11.8	11.6	11.6	11.8	12.2	12.8	13.3	13.6							
80	9.34	9.30	8.86	8.34	7.76	7.50	7.57	7.76	8.19	8.70	9.26	9.53							
85	5.42	5.31	4.80	4.28	3.75	3.77	3.93	3.94	4.16	4.64	5.21	5.51							
90	2.59	2.41	1.62	0.91	1.21	1.56	1.68	1.62	1.35	1.02	1.87	2.48							
95	0.93	0.89	0.92	0.93	0.89	0.80	0.64	0.77	0.92	0.97	1.02	0.89							
100	0.78	0.87	0.92	0.94	0.89	0.84	0.68	0.77	0.96	1.02	0.95	0.81							
105	0.79	0.88	0.92	0.96	0.93	0.89	0.72	0.81	0.99	1.05	0.98	0.81							
110	0.82	0.92	0.95	0.98	0.96	0.93	0.76	0.85	1.03	1.07	1.01	0.84							
115	0.87	0.96	0.98	0.99	1.00	0.97	0.81	0.90	1.05	1.10	1.04	0.87							
120	0.91	1.00	1.01	1.02	1.03	1.01	0.86	0.93	1.08	1.11	1.06	0.91							
125	0.96	1.03	1.05	1.05	1.06	1.05	0.91	0.97	1.11	1.13	1.08	0.94							
130	1.01	1.07	1.07	1.07	1.09	1.09	0.95	1.01	1.14	1.15	1.11	0.97							
135	1.05	1.11	1.10	1.10	1.12	1.13	1.00	1.04	1.16	1.17	1.13	0.99							
140	1.09	1.14	1.13	1.13	1.16	1.16	1.05	1.08	1.18	1.19	1.15	1.03							
145	1.13	1.17	1.17	1.18	1.20	1.20	1.10	1.12	1.22	1.21	1.18	1.06							
150	1.17	1.20	1.21	1.23	1.23	1.23	1.15	1.15	1.24	1.23	1.21	1.10							
155	1.20	1.22	1.23	1.29	1.26	1.26	1.19	1.20	1.27	1.25	1.25	1.14							
160	1.24	1.24	1.26	1.32	1.28	1.30	1.25	1.23	1.29	1.28	1.27	1.18							
165	1.27	1.27	1.29	1.34	1.31	1.33	1.28	1.27	1.31	1.30	1.30	1.22							
170	1.29	1.31	1.31	1.35	1.33	1.35	1.31	1.31	1.34	1.32	1.32	1.29							
175	1.31	1.33	1.34	1.37	1.35	1.36	1.32	1.33	1.36	1.34	1.36	1.33							
180	1.32	1.34	1.36	1.37	1.36	1.36	1.32	1.34	1.36	1.37	1.37	1.35							

C Range: 0 - 360DEG

C Interval: 30.0DEG

Test Speed: HIGH

Temperature:25.3℃

Operators:

Test Date:2025-03-12

γ Range: 0 - 180DEG

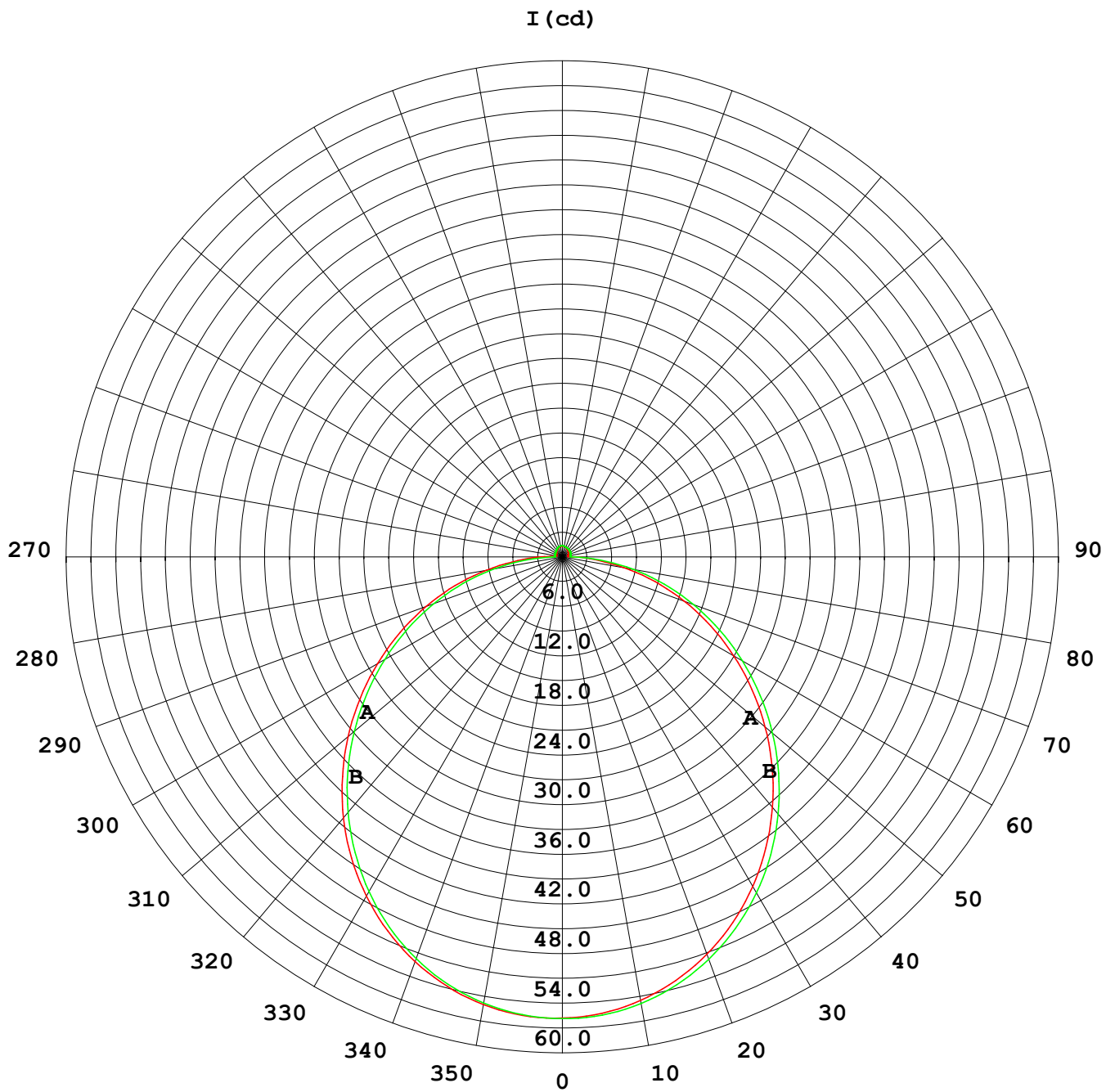
γ Interval: 1.0DEG

Test System:EVERFINE GO-2000B\_V1 SYSTEM V2.00.488

Humidity:65.0%

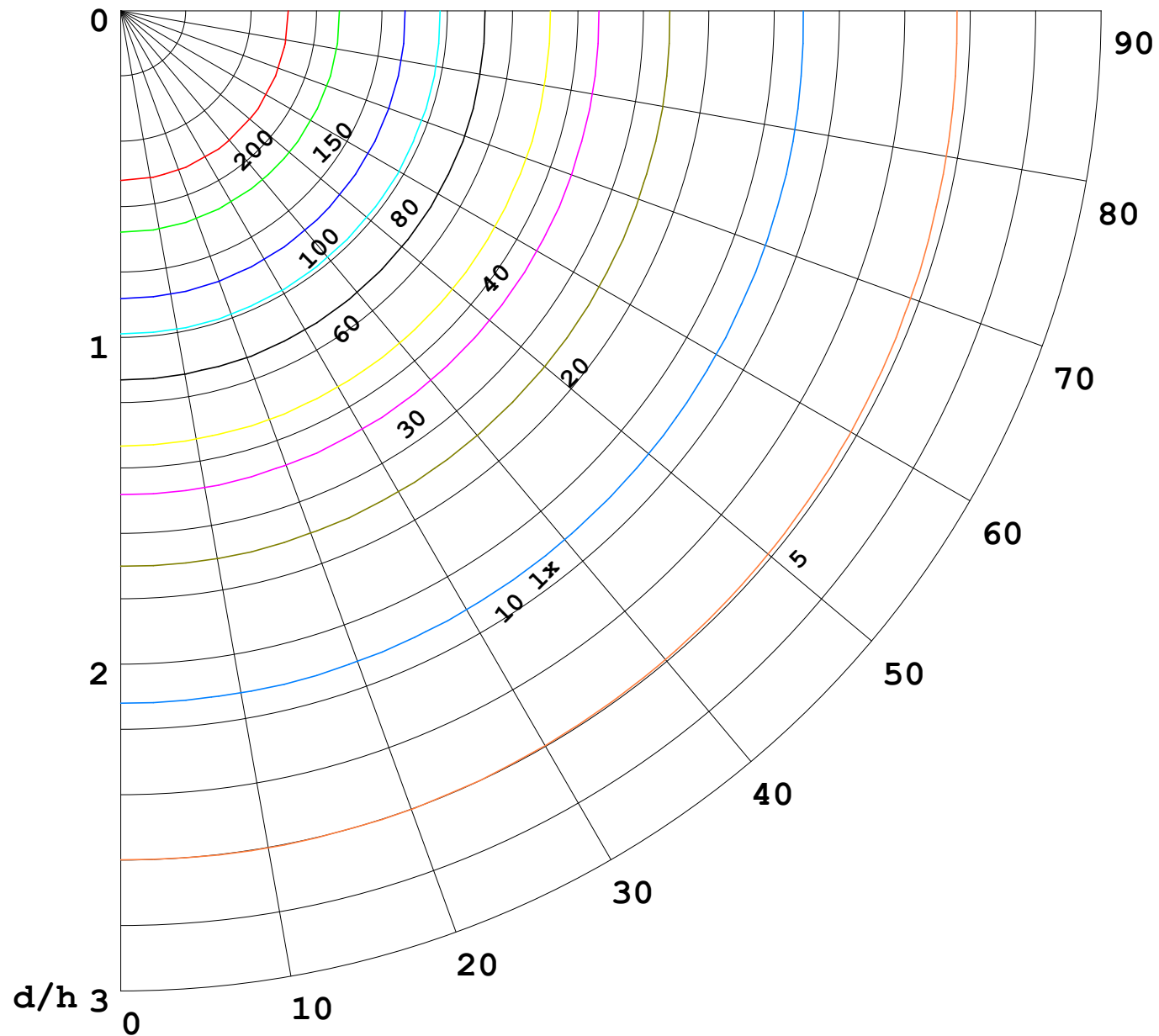
Test Distance:6.360m [K=1.0000]

Remarks:



1000 lm

$\kappa = 1$



F = 1000 lm  
 K = 0.7  
 Hcc = 0.8 m  
 Hfc = 0.0 m  
 Eave = 100 lx

	Pcc	Pw	Pfc
—————	70	50	30
—————	50	30	20

