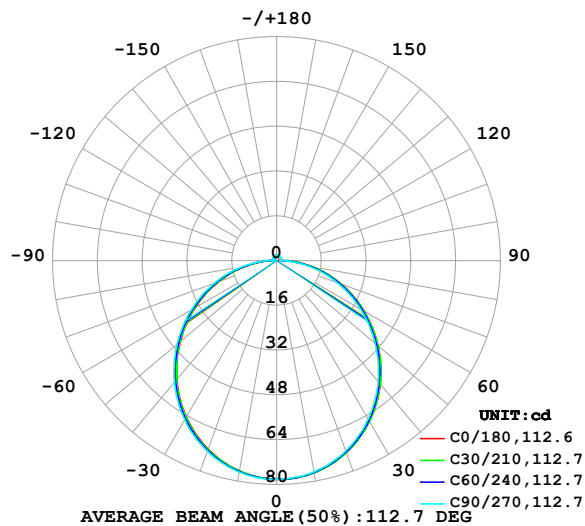


LUMINAIRE PHOTOMETRIC TEST REPORT

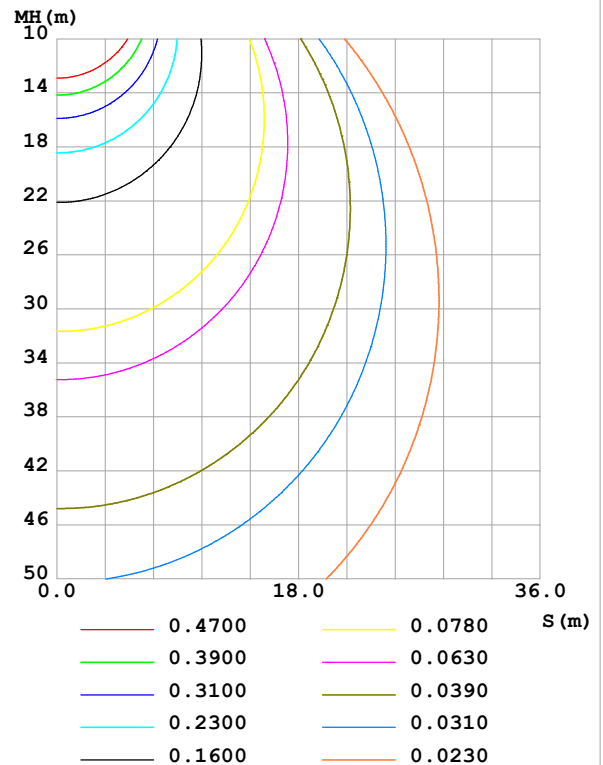
Test:U:24.00V I:0.2413A P:5.791W PF:1.000 Freq:0Hz Lamp Flux:238.679x1 lm		
NAME: SF16-24v-5050-70-DMX-4000K-(3)	TYPE:	WEIGHT:
SPEC.:	DIM.: Length=1m	SERIAL No.:
MFR.: OLympia lighting	SUR.:	Shielding Angle:

DATA OF LAMP		PHOTOMETRIC DATA Eff: 41.21 lm/W			
MODEL	5050	I _{max} (cd)	78.19	S/MH(C0/180)	1.23
NOMINAL POWER(W)		LOR(%)	100.0	S/MH(C90/270)	1.25
RATED VOLTAGE(V)	24	TOTAL FLUX(lm)	238.68	η UP,DN(C0-180)	1.9,48.1
NOMINAL FLUX(lm)	238.679	CIE CLASS	DIRECT	η UP,DN(C180-360)	1.9,48.1
LAMPS INSIDE	1	η up (%)	3.8	CIBSE SHR NOM	1.25
TEST VOLTAGE(V)		η down (%)	96.2	CIBSE SHR MAX	1.35

LUMINOUS INTENSITY DISTRIBUTION DIAGRAM



C0 PLANE ISOLUX DIAGRAM (UNIT:lx)



C Range: 0 - 360DEG
C Interval: 30.0DEG
Test Speed: HIGH
Temperature:25.3℃
Operators:
Test Date:2025-03-12

γ Range: 0 - 180DEG
γ Interval: 1.0DEG
Test System:EVERFINE GO-2000B_V1 SYSTEM V2.00.488
Humidity:65.0%
Test Distance:6.360m [K=1.0000]
Remarks:

ZONAL FLUX DIAGRAM

ZONAL FLUX DIAGRAM:

γ	C0	C45	C90	C135	C180	C225	C270	C315	γ	Φ zone	Φ total	%lum, lamp
10	77.00	76.95	76.69	76.39	76.34	76.46	76.75	77.03	0- 10	7.392	7.392	3.1,3.1
20	72.91	72.82	72.32	71.80	71.66	71.95	72.48	73.00	10- 20	21.13	28.52	11.9,11.9
30	66.35	66.12	65.41	64.73	64.56	64.96	65.71	66.39	20- 30	31.91	60.43	25.3,25.3
40	57.62	57.30	56.41	55.60	55.46	55.93	56.83	57.69	30- 40	38.34	98.77	41.4,41.4
50	47.32	46.95	45.93	45.03	44.91	45.44	46.46	47.42	40- 50	39.77	138.5	58,58
60	36.10	35.71	34.64	33.66	33.55	34.13	35.21	36.22	50- 60	36.32	174.9	73.3,73.3
70	24.55	24.16	23.07	22.06	21.98	22.57	23.68	24.67	60- 70	28.85	203.7	85.3,85.3
80	13.09	12.70	11.62	10.62	10.56	11.14	12.21	13.21	70- 80	18.58	222.3	93.1,93.1
90	3.647	2.814	1.227	1.889	2.308	2.084	1.467	3.105	80- 90	7.215	229.5	96.2,96.2
100	1.076	1.214	1.285	1.186	0.9286	1.231	1.472	1.241	90-100	1.543	231.0	96.8,96.8
110	1.136	1.292	1.337	1.302	1.058	1.339	1.548	1.309	100-110	1.322	232.4	97.4,97.4
120	1.277	1.390	1.409	1.412	1.188	1.427	1.600	1.390	110-120	1.336	233.7	97.9,97.9
130	1.404	1.481	1.470	1.515	1.324	1.515	1.640	1.471	120-130	1.291	235.0	98.5,98.5
140	1.523	1.573	1.577	1.616	1.459	1.599	1.689	1.539	130-140	1.183	236.2	99,99
150	1.629	1.658	1.733	1.715	1.595	1.683	1.741	1.622	140-150	1.018	237.2	99.4,99.4
160	1.733	1.739	1.836	1.807	1.727	1.768	1.796	1.718	150-160	0.7937	238.0	99.7,99.7
170	1.797	1.833	1.888	1.875	1.825	1.852	1.845	1.829	160-170	0.5103	238.5	99.9,99.9
180	1.848	1.893	1.914	1.905	1.848	1.895	1.917	1.904	170-180	0.1782	238.7	100,100
DEG	LUMINOUS INTENSITY:cd									UNIT:lm		

Conical surface Flux(90deg): 118.8 lm

%lum = 49.8%

%lamp = 49.8%

Conical surface Flux(130deg): 190.43 lm

%lum = 79.8%

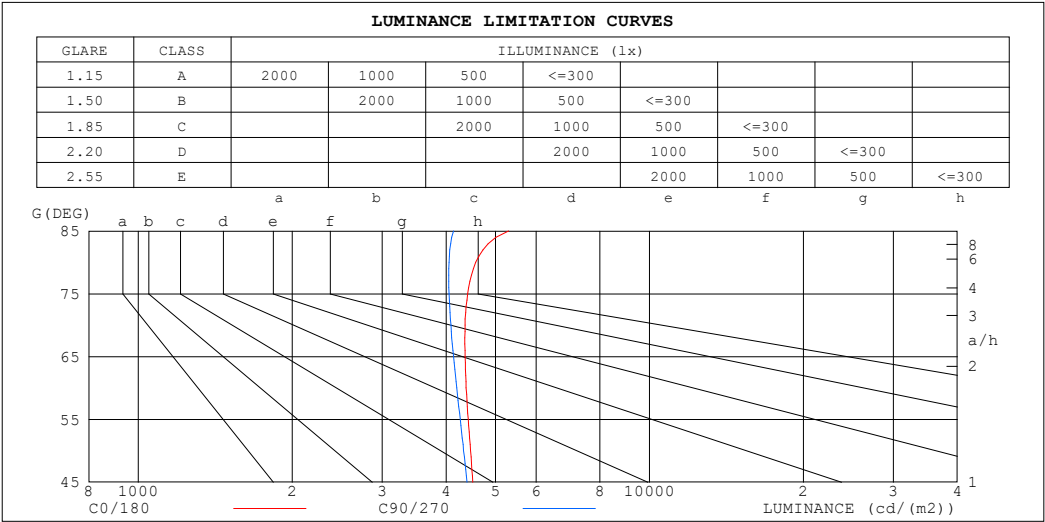
%lamp = 79.8%

C Range: 0 - 360DEG
 C Interval: 30.0DEG
 Test Speed: HIGH
 Temperature:25.3℃
 Operators:
 Test Date:2025-03-12

γ Range: 0 - 180DEG
 γ Interval: 1.0DEG
 Test System:EVERFINE GO-2000B_V1 SYSTEM V2.00.488
 Humidity:65.0%
 Test Distance:6.360m [K=1.0000]
 Remarks:

LUMINANCE LIMITATION CURVES

Test:U:24.00V I:0.2413A P:5.791W PF:1.000 Freq:0Hz Lamp Flux:238.679x1 lm		
NAME: SF16-24v-5050-70-DMX-4000K-(3)	TYPE:	WEIGHT:
SPEC.:	DIM.: Length=1m	SERIAL No.:
MFR.: OLympia lighting	SUR.:	Shielding Angle:



LUMINANCE cd/(m2)		
G (DEG)	C0/180	C90/270
85	5305	4139
80	4572	4054
75	4408	4056
70	4354	4087
65	4357	4136
60	4379	4196
55	4419	4262
50	4465	4329
45	4514	4396

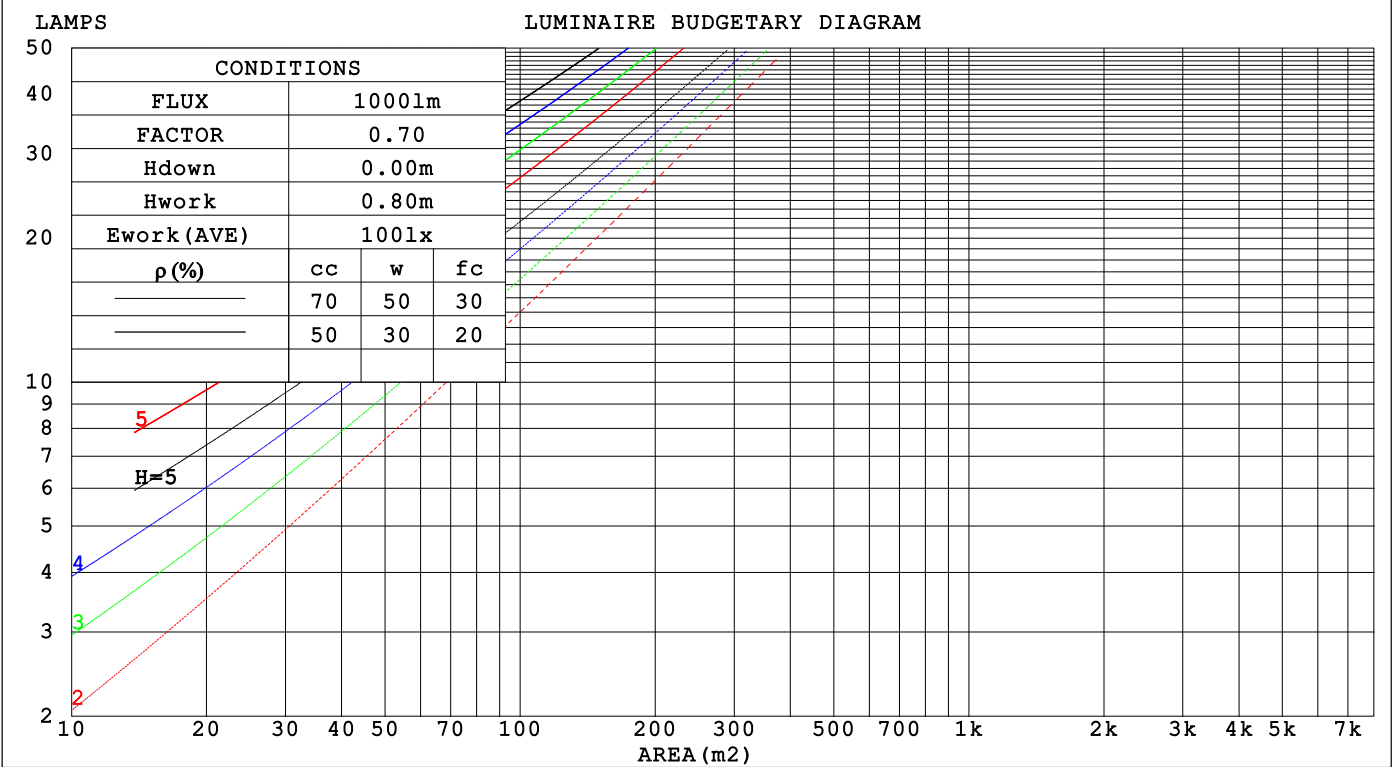
C Range: 0 - 360DEG
C Interval: 30.0DEG
Test Speed: HIGH
Temperature:25.3℃
Operators:
Test Date:2025-03-12

γ Range: 0 - 180DEG
γ Interval: 1.0DEG
Test System:EVERFINE GO-2000B_V1 SYSTEM V2.00.488
Humidity:65.0%
Test Distance:6.360m [K=1.0000]
Remarks:

CU AND LUMINAIRE BUDGETARY ESTIMATE DIAGRAM

Test:U:24.00V I:0.2413A P:5.791W PF:1.000 Freq:0Hz		
Lamp Flux:238.679x1 lm		
NAME: SF16-24v-5050-70-DMX-4000K-(3)	TYPE:	WEIGHT:
SPEC.:	DIM.: Length=1m	SERIAL No.:
MFR.: OLYMPIA lighting	SUR.:	Shielding Angle:

pcc	80%			70%			50%			30%			10%			0
pw	50%	30%	10%	50%	30%	10%	50%	30%	10%	50%	30%	10%	50%	30%	10%	0
pfc	20%			20%			20%			20%			20%			0
RCR	RCR:Room Cavity Ratio															

C Range: 0 - 360DEG
C Interval: 30.0DEG
Test Speed: HIGH
Temperature:25.3℃
Operators:
Test Date:2025-03-12γ Range: 0 - 180DEG
γ Interval: 1.0DEG
Test System:EVERFINE GO-2000B_V1 SYSTEM V2.00.488
Humidity:65.0%
Test Distance:6.360m [K=1.0000]
Remarks:

WEC AND CCEC

Test:U:24.00V I:0.2413A P:5.791W PF:1.000 Freq:0Hz Lamp Flux:238.679x1 lm		
NAME: SF16-24v-5050-70-DMX-4000K-(3)	TYPE:	WEIGHT:
SPEC.:	DIM.: Length=1m	SERIAL No.:
MFR.: OLYMPIA lighting	SUR.:	Shielding Angle:

pcc	80%			70%			50%			30%			10%			0														
pw	50%	30%	10%	50%	30%	10%	50%	30%	10%	50%	30%	10%	50%	30%	10%	0														
pfc	20%			20%			20%			20%			20%			0														
RCR	RCR:Room Cavity Ratio															Wall Exitance Coefficients(WEC)														
0.0																														
1.0	.326	.185	.059	.318	.181	.058	.302	.173	.055	.288	.166	.053	.275	.159	.051															
2.0	.301	.165	.051	.293	.162	.050	.280	.155	.048	.267	.150	.047	.255	.144	.045															
3.0	.276	.147	.044	.269	.144	.043	.257	.139	.042	.245	.134	.041	.235	.130	.040															
4.0	.253	.131	.039	.247	.129	.038	.236	.125	.037	.226	.121	.037	.216	.118	.036															
5.0	.233	.119	.034	.228	.117	.034	.218	.113	.033	.209	.110	.033	.200	.107	.032															
6.0	.215	.108	.031	.211	.106	.031	.202	.103	.030	.194	.101	.030	.186	.098	.029															
7.0	.200	.099	.028	.196	.098	.028	.188	.095	.027	.180	.092	.027	.173	.090	.026															
8.0	.186	.091	.026	.183	.090	.025	.175	.088	.025	.169	.085	.025	.162	.083	.024															
9.0	.175	.084	.024	.171	.083	.023	.165	.081	.023	.158	.079	.023	.153	.078	.022															
10.0	.164	.079	.022	.161	.078	.022	.155	.076	.021	.149	.074	.021	.144	.072	.021															

pcc	80%			70%			50%			30%			10%			0
pw	50%	30%	10%	50%	30%	10%	50%	30%	10%	50%	30%	10%	50%	30%	10%	0
pfc	20%			20%			20%			20%			20%			0
RCR	RCR:Room Cavity Ratio						Ceiling Cavity Exitance Coefficients (CCEC)									
0.0	.220	.220	.220	.188	.188	.188	.128	.128	.128	.074	.074	.074	.024	.024	.024	
1.0	.211	.186	.163	.181	.159	.140	.123	.110	.097	.071	.063	.056	.023	.020	.018	
2.0	.203	.162	.127	.174	.139	.109	.119	.096	.076	.069	.056	.045	.022	.018	.015	
3.0	.195	.144	.103	.168	.124	.090	.115	.086	.063	.066	.050	.037	.021	.016	.012	
4.0	.188	.131	.088	.161	.113	.076	.111	.079	.054	.064	.046	.032	.021	.015	.010	
5.0	.180	.121	.077	.155	.105	.067	.107	.073	.047	.062	.043	.028	.020	.014	.009	
6.0	.173	.113	.069	.149	.097	.060	.103	.068	.043	.060	.040	.025	.019	.013	.008	
7.0	.166	.106	.063	.143	.092	.055	.099	.064	.039	.057	.038	.023	.019	.012	.008	
8.0	.160	.100	.059	.137	.087	.051	.095	.061	.036	.055	.036	.022	.018	.012	.007	
9.0	.153	.095	.056	.132	.082	.048	.092	.058	.034	.053	.034	.021	.017	.011	.007	
10.0	.148	.091	.053	.127	.079	.046	.088	.055	.033	.052	.033	.020	.017	.011	.006	

C Range: 0 - 360DEG
C Interval: 30.0DEG
Test Speed: HIGH
Temperature:25.3℃
Operators:
Test Date:2025-03-12

γ Range: 0 - 180DEG
γ Interval: 1.0DEG
Test System:EVERFINE GO-2000B_V1 SYSTEM V2.00.488
Humidity:65.0%
Test Distance:6.360m [K=1.0000]
Remarks:

UGR(Unified Glare Rating) Table

Test:U:24.00V I:0.2413A P:5.791W PF:1.000 Freq:0Hz Lamp Flux:238.679x1 lm											
NAME: SF16-24v-5050-70-DMX-4000K-(3)						TYPE:		WEIGHT:			
SPEC.:						DIM.: Length=1m		SERIAL No.:			
MFR.: OLympia lighting						SUR.:		Shielding Angle:			
ceiling/cavity	0.7	0.7	0.5	0.5	0.3	0.7	0.7	0.5	0.5	0.3	
walls	0.5	0.3	0.5	0.3	0.3	0.5	0.3	0.5	0.3	0.3	
working plane	0.2	0.2	0.2	0.2	0.2	0.2	0.2	0.2	0.2	0.2	
Room dimensions		Viewed crosswise					Viewed endwise				
x = 2H y = 2H	2H	22.8	24.2	23.1	24.5	24.8	22.6	24.1	22.9	24.3	24.6
	3H	24.5	25.9	24.8	26.2	26.5	24.3	25.6	24.6	25.9	26.3
	4H	25.3	26.6	25.7	26.9	27.3	25.0	26.3	25.4	26.6	27.0
	6H	26.0	27.2	26.4	27.5	27.9	25.6	26.8	26.0	27.2	27.5
	8H	26.3	27.4	26.7	27.8	28.2	25.8	27.0	26.2	27.4	27.8
	12H	26.5	27.6	26.9	28.0	28.4	26.0	27.2	26.4	27.5	27.9
4H	2H	23.4	24.7	23.8	25.0	25.4	23.3	24.6	23.6	24.9	25.2
	3H	25.3	26.5	25.7	26.8	27.2	25.1	26.3	25.5	26.6	27.0
	4H	26.3	27.3	26.7	27.7	28.1	26.0	27.1	26.5	27.5	27.9
	6H	27.1	28.0	27.6	28.5	28.9	26.8	27.7	27.2	28.1	28.6
	8H	27.5	28.3	28.0	28.8	29.3	27.1	28.0	27.6	28.4	28.9
	12H	27.8	28.6	28.3	29.1	29.5	27.3	28.1	27.8	28.6	29.1
8H	4H	26.6	27.5	27.1	27.9	28.4	26.4	27.3	26.9	27.7	28.2
	6H	27.7	28.4	28.2	28.9	29.4	27.4	28.1	27.9	28.6	29.1
	8H	28.1	28.8	28.7	29.3	29.8	27.8	28.4	28.3	28.9	29.5
	12H	28.6	29.2	29.1	29.7	30.2	28.1	28.7	28.7	29.2	29.8
12H	4H	26.6	27.4	27.1	27.9	28.4	26.4	27.2	26.9	27.7	28.2
	6H	27.8	28.4	28.3	28.9	29.4	27.5	28.1	28.0	28.6	29.1
	8H	28.3	28.9	28.8	29.4	29.9	28.0	28.5	28.5	29.0	29.6
Variations with the observer position at spacings(CIE Pub.117):											
S = 1.0H		+ 0.1 / - 0.2					+ 0.1 / - 0.2				
1.5H		+ 0.2 / - 0.3					+ 0.2 / - 0.3				
2.0H		+ 0.1 / - 0.3					+ 0.1 / - 0.3				

CIE Pub.117, 238.7 lm Total Lamp Luminous Flux Correct (8log(F/F0) = -5.0)
Area: 0.0165 m2

C Range: 0 - 360DEG
C Interval: 30.0DEG
Test Speed: HIGH
Temperature:25.3℃
Operators:
Test Date:2025-03-12

γ Range: 0 - 180DEG
γ Interval: 1.0DEG
Test System:EVERFINE GO-2000B_V1 SYSTEM V2.00.488
Humidity:65.0%
Test Distance:6.360m [K=1.0000]
Remarks:

UTILIZATION FACTORS TABLE

Test:U:24.00V I:0.2413A P:5.791W PF:1.000 Freq:0Hz Lamp Flux:238.679x1 lm		
NAME: SF16-24v-5050-70-DMX-4000K-(3)	TYPE:	WEIGHT:
SPEC.:	DIM.: Length=1m	SERIAL No.:
MFR.: OLympia lighting	SUR.:	Shielding Angle:

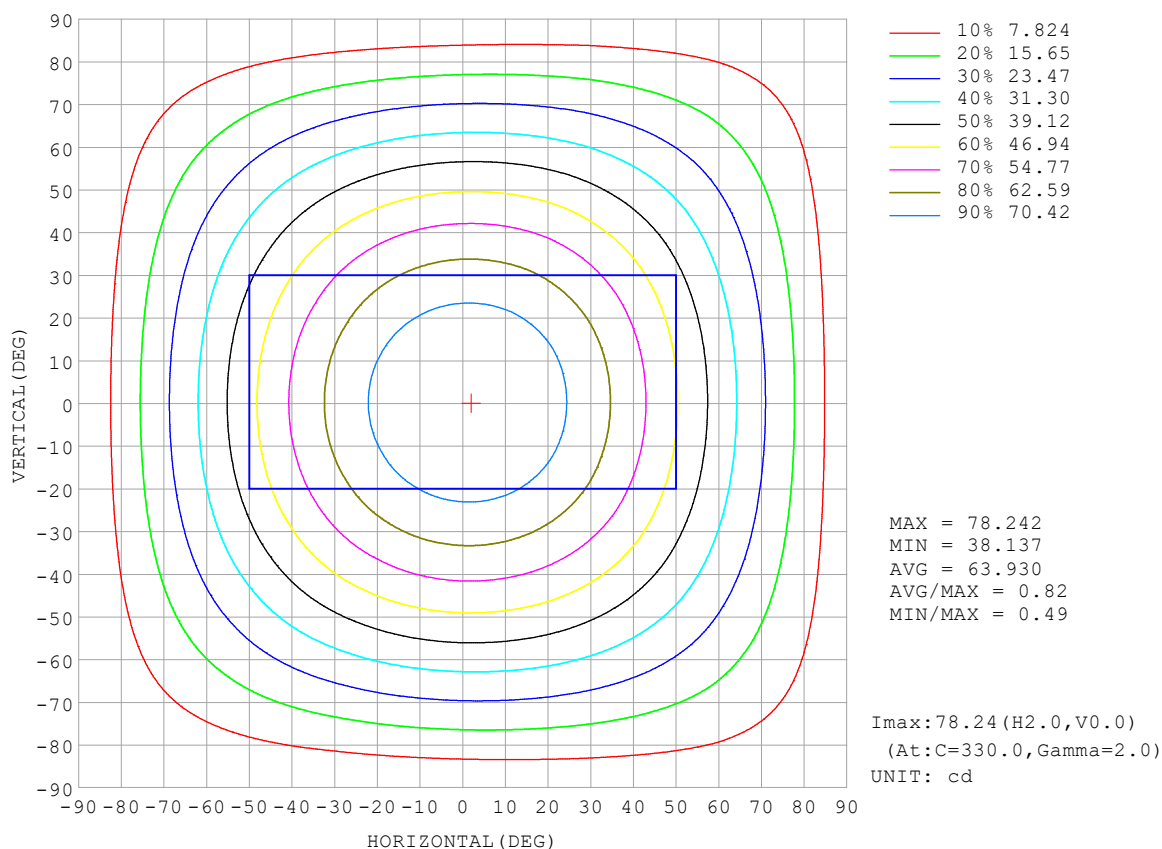
REFLECTANCE										
Ceiling	0.8	0.8	0.8	0.7	0.7	0.7	0.5	0.5	0.5	0
Walls	0.7	0.5	0.3	0.7	0.5	0.3	0.7	0.5	0.3	0
Working plane	0.2	0.2	0.2	0.2	0.2	0.2	0.2	0.2	0.2	0
ROOM INDEX	UTILIZATION FACTORS (PERCENT) $k(RI) \times RCR = 5$									
$k = 0.60$	56	44	37	55	44	37	53	43	36	30
0.80	65	54	46	64	53	46	62	52	45	38
1.00	74	62	55	72	62	54	70	63	54	46
1.25	81	70	62	79	69	62	76	67	61	53
1.50	86	75	68	84	74	67	80	72	66	58
2.00	93	84	77	91	82	76	87	80	74	65
2.50	97	88	82	94	87	81	90	84	79	69
3.00	100	93	87	98	91	86	93	88	83	73
4.00	104	98	93	102	96	92	97	92	88	78
5.00	107	102	97	104	99	95	99	95	92	81
ROOM INDEX	UF (total)									Direct
According to DIN EN 13032-2 2004			Suspended					SHRNOM = 1.25		

C Range: 0 - 360DEG
 C Interval: 30.0DEG
 Test Speed: HIGH
 Temperature: 25.3 °C
 Operators:
 Test Date: 2025-03-12

γ Range: 0 - 180DEG
 γ Interval: 1.0DEG
 Test System: EVERFINE GO-2000B_V1 SYSTEM V2.00.488
 Humidity: 65.0%
 Test Distance: 6.360m [K=1.0000]
 Remarks:

ISOCANDELA DIAGRAM

Test:U:24.00V I:0.2413A P:5.791W PF:1.000 Freq:0Hz Lamp Flux:238.679x1 lm		
NAME: SF16-24v-5050-70-DMX-4000K-(3)	TYPE:	WEIGHT:
SPEC.:	DIM.: Length=1m	SERIAL No.:
MFR.: OLympia lighting	SUR.:	Shielding Angle:

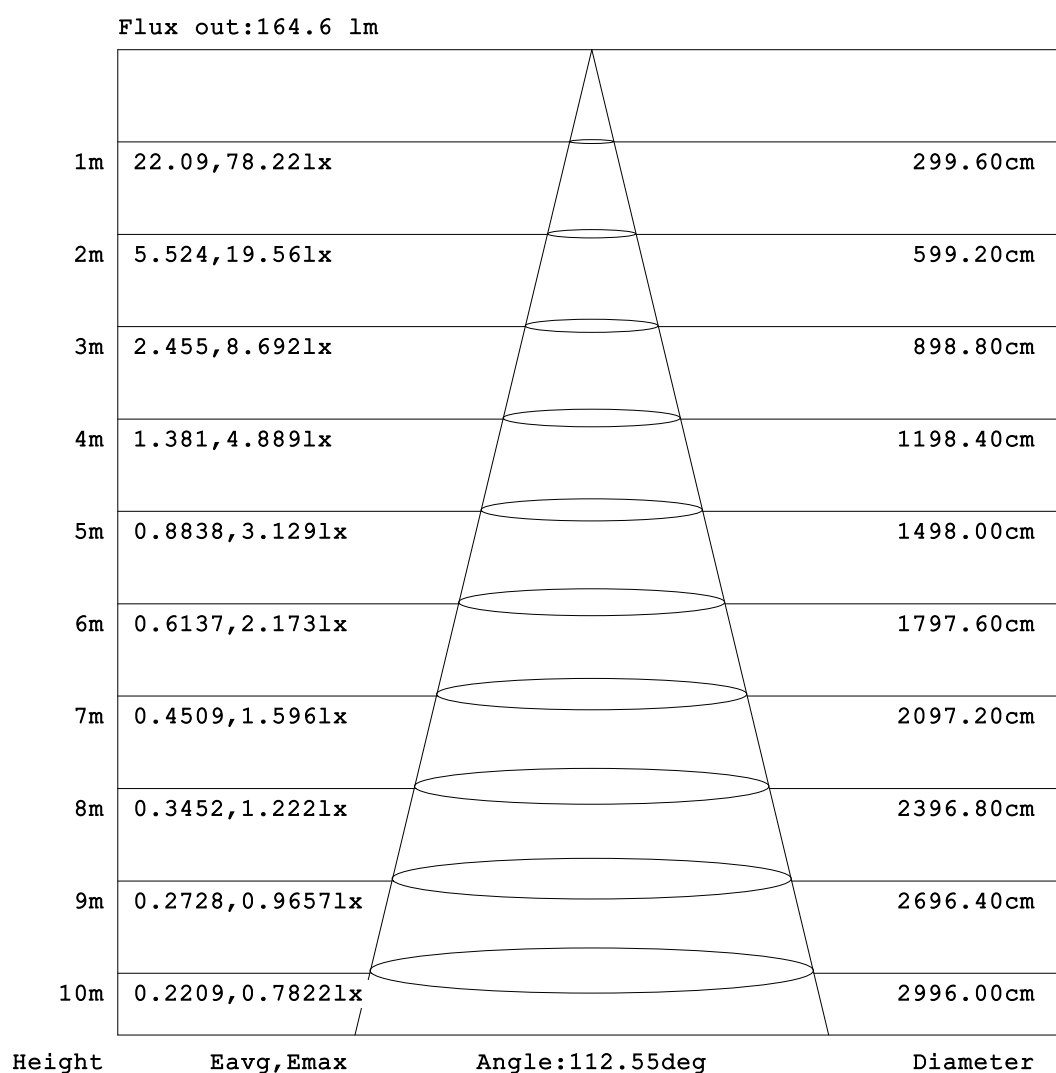


C Range: 0 - 360DEG
C Interval: 30.0DEG
Test Speed: HIGH
Temperature:25.3℃
Operators:
Test Date:2025-03-12

γ Range: 0 - 180DEG
γ Interval: 1.0DEG
Test System:EVERFINE GO-2000B_V1 SYSTEM V2.00.488
Humidity:65.0%
Test Distance:6.360m [K=1.0000]
Remarks:

AAI Figure

Test:U:24.00V I:0.2413A P:5.791W PF:1.000 Freq:0Hz Lamp Flux:238.679x1 lm		
NAME: SF16-24v-5050-70-DMX-4000K-(3)	TYPE:	WEIGHT:
SPEC.:	DIM.: Length=1m	SERIAL No.:
MFR.: OLympia lighting	SUR.:	Shielding Angle:



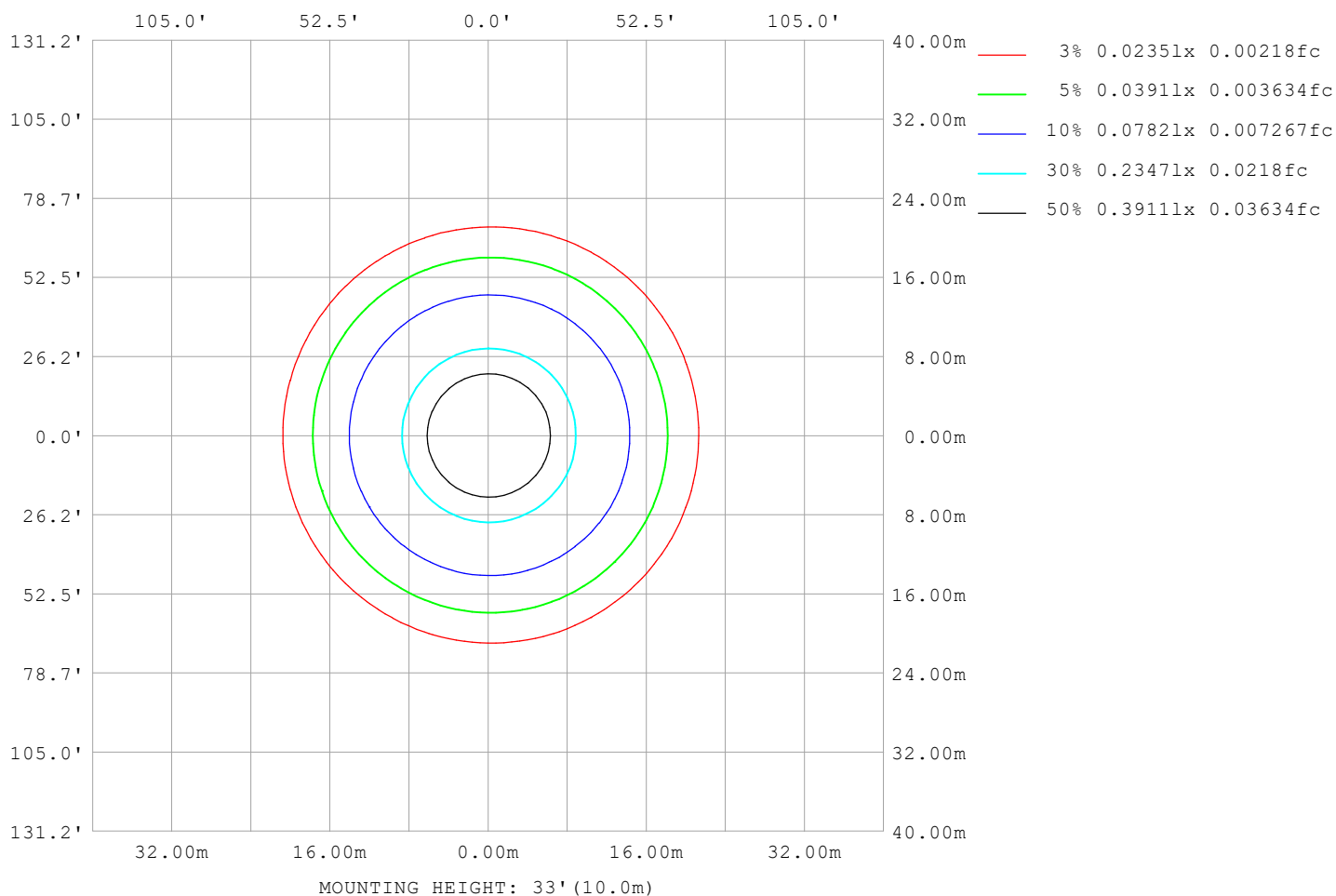
Note:The Curves indicate the illuminated area and the average illumination when the luminaire is at different distance.

C Range: 0 - 360DEG
C Interval: 30.0DEG
Test Speed: HIGH
Temperature:25.3℃
Operators:
Test Date:2025-03-12

γ Range: 0 - 180DEG
γ Interval: 1.0DEG
Test System:EVERFINE GO-2000B_V1 SYSTEM V2.00.488
Humidity:65.0%
Test Distance:6.360m [K=1.0000]
Remarks:

ISOLUX DIAGRAM

Test:U:24.00V I:0.2413A P:5.791W PF:1.000 Freq:0Hz Lamp Flux:238.679x1 lm		
NAME: SF16-24v-5050-70-DMX-4000K-(3)	TYPE:	WEIGHT:
SPEC.:	DIM.: Length=1m	SERIAL No.:
MFR.: OLympia lighting	SUR.:	Shielding Angle:



C Range: 0 - 360DEG
C Interval: 30.0DEG
Test Speed: HIGH
Temperature: 25.3°C
Operators:
Test Date: 2025-03-12

γ Range: 0 - 180DEG
γ Interval: 1.0DEG
Test System: EVERFINE GO-2000B_V1 SYSTEM V2.00.488
Humidity: 65.0%
Test Distance: 6.360m [K=1.0000]
Remarks:

LED Avg.L Report

Test:U:24.00V I:0.2413A P:5.791W PF:1.000 Freq:0Hz Lamp Flux:238.679x1 lm		
NAME: SF16-24v-5050-70-DMX-4000K-(3)	TYPE:	WEIGHT:
SPEC.:	DIM.: Length=1m	SERIAL No.:
MFR.: OLympia lighting	SUR.:	Shielding Angle:

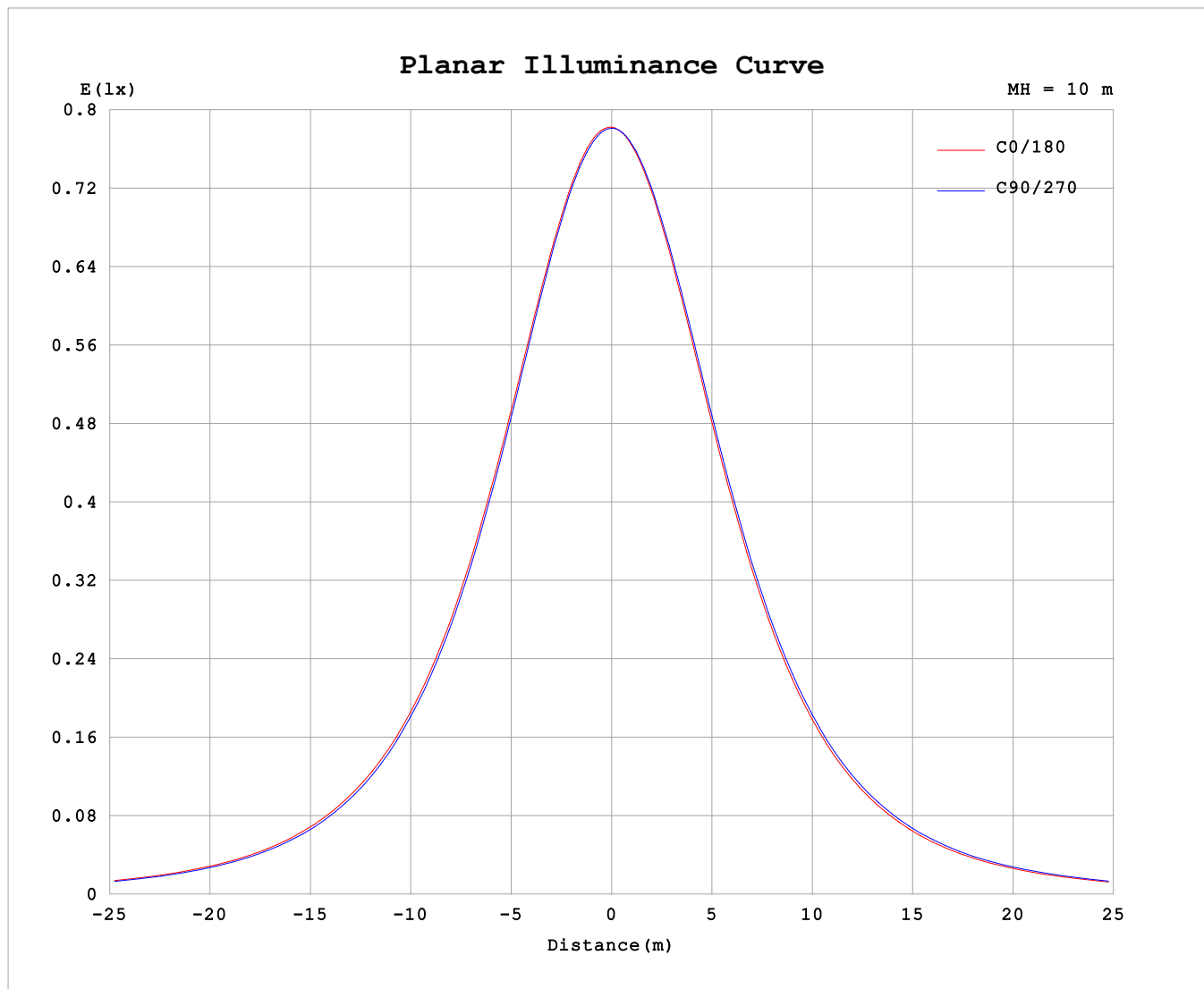
AvgL	cd/m2
L_0~180 (65) av	4167
L_0~180 (75) av	4104
L_0~180 (85) av	4533
L_90~270 (65) av	4181
L_90~270 (75) av	4125
L_90~270 (85) av	4341
L_45 (65) av	4183
L_45 (75) av	4126
L_45 (85) av	4429

Standard: GB/T 29293-2012

C Range: 0 - 360DEG
C Interval: 30.0DEG
Test Speed: HIGH
Temperature:25.3℃
Operators:
Test Date:2025-03-12

γ Range: 0 - 180DEG
γ Interval: 1.0DEG
Test System:EVERFINE GO-2000B_V1 SYSTEM V2.00.488
Humidity:65.0%
Test Distance:6.360m [K=1.0000]
Remarks:

Planar Illuminance Curve



C Range: 0 - 360DEG
C Interval: 30.0DEG
Test Speed: HIGH
Temperature: 25.3 °C
Operators:
Test Date: 2025-03-12

γ Range: 0 - 180DEG
 γ Interval: 1.0DEG
Test System: EVERFINE GO-2000B_V1 SYSTEM V2.00.488
Humidity: 65.0%
Test Distance: 6.360m [K=1.0000]
Remarks:

LUMINOUS DISTRIBUTION INTENSITY DATA

Test:U:24.00V I:0.2413A P:5.791W PF:1.000 Freq:0Hz Lamp Flux:238.679x1 lm											
NAME: SF16-24v-5050-70-DMX-4000K-(3)						TYPE:			WEIGHT:		
SPEC.:						DIM.: Length=1m			SERIAL No.:		
MFR.: OLYMPIA lighting						SUR.:			Shielding Angle:		

Table--1

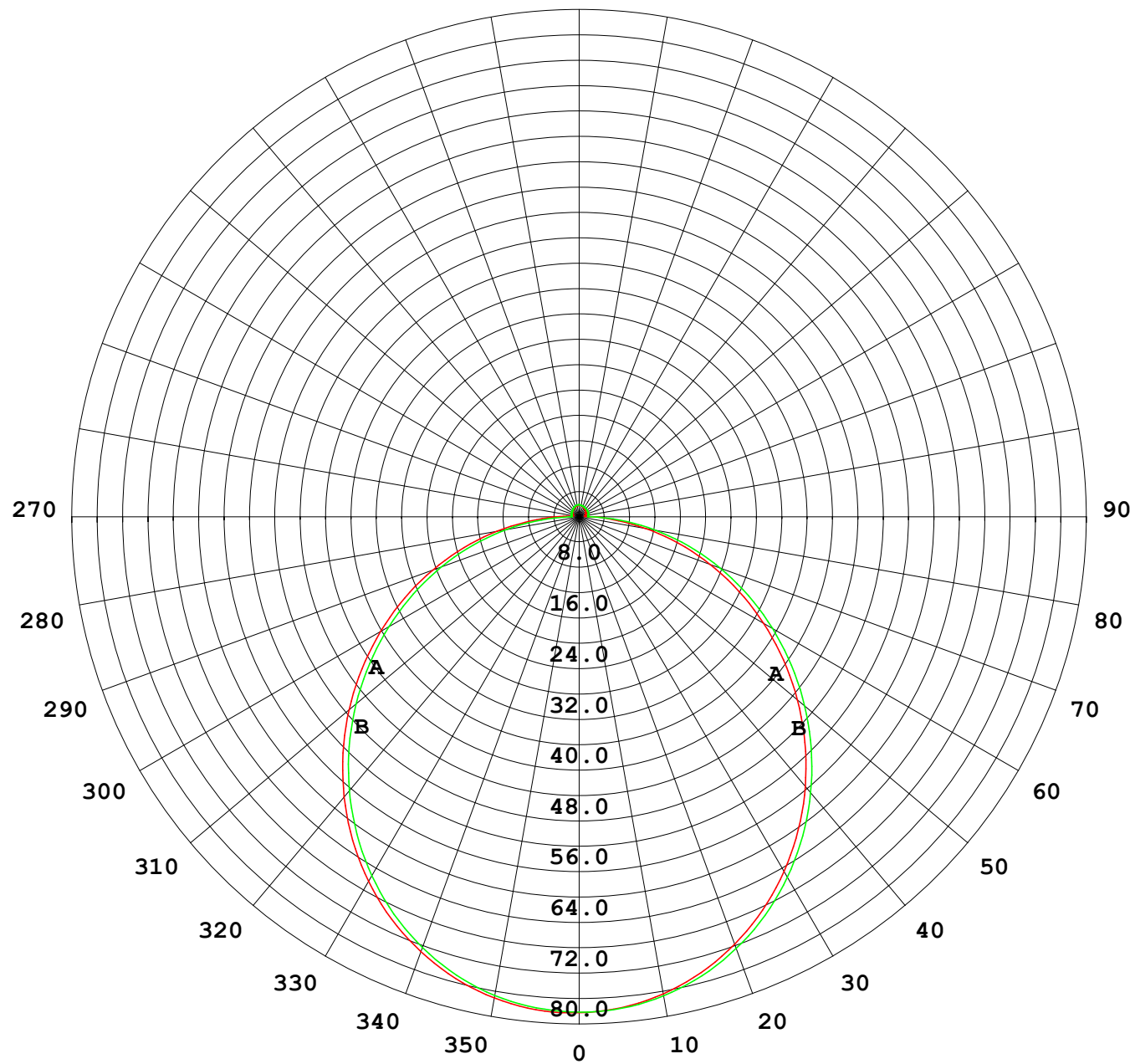
UNIT: cd

C (DEG) γ (DEG)	0	30	60	90	120	150	180	210	240	270	300	330							
0	78.2	78.2	78.2	78.2	78.2	78.2	78.2	78.2	78.2	78.2	78.2	78.2							
5	78.0	77.9	77.9	77.8	77.7	77.6	77.6	77.6	77.7	77.8	77.9	78.0							
10	77.0	77.0	76.9	76.7	76.5	76.3	76.3	76.4	76.6	76.8	77.0	77.1							
15	75.3	75.3	75.1	74.9	74.5	74.4	74.3	74.4	74.7	74.9	75.3	75.4							
20	72.9	73.0	72.7	72.3	71.9	71.7	71.7	71.8	72.1	72.5	72.9	73.1							
25	70.0	69.9	69.6	69.2	68.7	68.4	68.4	68.5	69.0	69.4	69.9	70.1							
30	66.4	66.3	65.9	65.4	64.9	64.6	64.6	64.7	65.2	65.7	66.3	66.5							
35	62.2	62.2	61.7	61.1	60.5	60.2	60.2	60.4	60.9	61.5	62.2	62.4							
40	57.6	57.6	57.0	56.4	55.8	55.4	55.5	55.6	56.2	56.8	57.5	57.8							
45	52.6	52.6	52.0	51.3	50.6	50.3	50.3	50.5	51.1	51.8	52.6	52.8							
50	47.3	47.3	46.6	45.9	45.2	44.9	44.9	45.1	45.8	46.5	47.3	47.6							
55	41.8	41.7	41.1	40.4	39.6	39.2	39.3	39.5	40.2	40.9	41.8	42.0							
60	36.1	36.0	35.4	34.6	33.8	33.5	33.6	33.8	34.5	35.2	36.1	36.4							
65	30.4	30.3	29.6	28.9	28.1	27.7	27.8	28.0	28.7	29.5	30.3	30.6							
70	24.6	24.5	23.8	23.1	22.2	21.9	22.0	22.2	22.9	23.7	24.5	24.8							
75	18.8	18.7	18.1	17.3	16.5	16.1	16.2	16.5	17.2	17.9	18.7	19.1							
80	13.1	13.0	12.4	11.6	10.8	10.5	10.6	10.8	11.5	12.2	13.0	13.4							
85	7.62	7.49	6.70	5.95	5.16	5.19	5.41	5.45	5.85	6.53	7.37	7.75							
90	3.65	3.36	2.26	1.23	1.63	2.15	2.31	2.24	1.93	1.47	2.66	3.55							
95	1.27	1.22	1.24	1.26	1.19	1.09	0.89	1.07	1.31	1.41	1.33	1.24							
100	1.08	1.18	1.24	1.28	1.23	1.14	0.93	1.09	1.37	1.47	1.35	1.13							
105	1.08	1.21	1.28	1.31	1.28	1.21	0.98	1.15	1.43	1.52	1.40	1.13							
110	1.14	1.27	1.32	1.34	1.32	1.28	1.06	1.21	1.47	1.55	1.44	1.18							
115	1.21	1.32	1.36	1.37	1.38	1.34	1.13	1.26	1.51	1.58	1.48	1.24							
120	1.28	1.38	1.40	1.41	1.43	1.40	1.19	1.32	1.54	1.60	1.50	1.28							
125	1.34	1.43	1.44	1.44	1.47	1.45	1.26	1.37	1.58	1.62	1.54	1.33							
130	1.40	1.49	1.48	1.47	1.52	1.51	1.32	1.42	1.61	1.64	1.57	1.37							
135	1.47	1.53	1.52	1.52	1.56	1.56	1.40	1.47	1.64	1.67	1.60	1.40							
140	1.52	1.58	1.57	1.58	1.62	1.61	1.46	1.52	1.67	1.69	1.63	1.45							
145	1.57	1.62	1.62	1.65	1.67	1.67	1.53	1.57	1.71	1.71	1.66	1.49							
150	1.63	1.65	1.66	1.73	1.72	1.71	1.59	1.62	1.74	1.74	1.70	1.55							
155	1.68	1.67	1.71	1.79	1.76	1.76	1.67	1.67	1.78	1.77	1.74	1.60							
160	1.73	1.72	1.76	1.84	1.80	1.81	1.73	1.73	1.81	1.80	1.77	1.66							
165	1.77	1.77	1.79	1.87	1.84	1.85	1.79	1.78	1.84	1.82	1.81	1.72							
170	1.80	1.82	1.85	1.89	1.87	1.88	1.83	1.83	1.87	1.85	1.85	1.81							
175	1.84	1.87	1.88	1.92	1.89	1.90	1.85	1.87	1.91	1.88	1.89	1.86							
180	1.85	1.88	1.90	1.91	1.91	1.90	1.85	1.88	1.91	1.92	1.91	1.89							

C Range: 0 - 360DEG
C Interval: 30.0DEG
Test Speed: HIGH
Temperature:25.3℃
Operators:
Test Date:2025-03-12

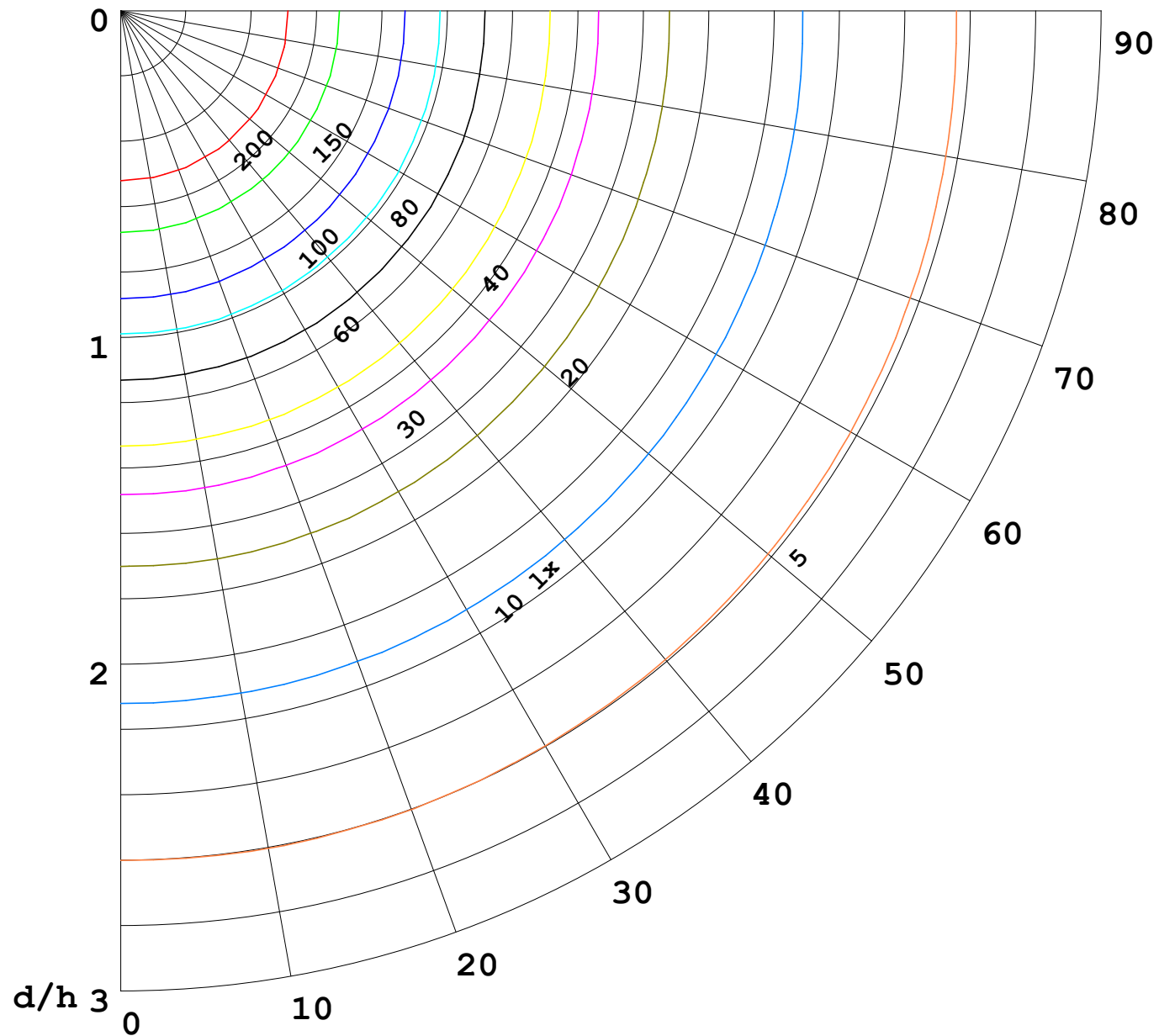
γ Range: 0 - 180DEG
γ Interval: 1.0DEG
Test System:EVERFINE GO-2000B_V1 SYSTEM V2.00.488
Humidity:65.0%
Test Distance:6.360m [K=1.0000]
Remarks:

I (cd)



1000 lm

$\kappa = 1$



F = 1000 lm
 K = 0.7
 Hcc = 0.8 m
 Hfc = 0.0 m
 Eave = 100 lx

	Pcc	Pw	Pfc
—————	70	50	30
—————	50	30	20

