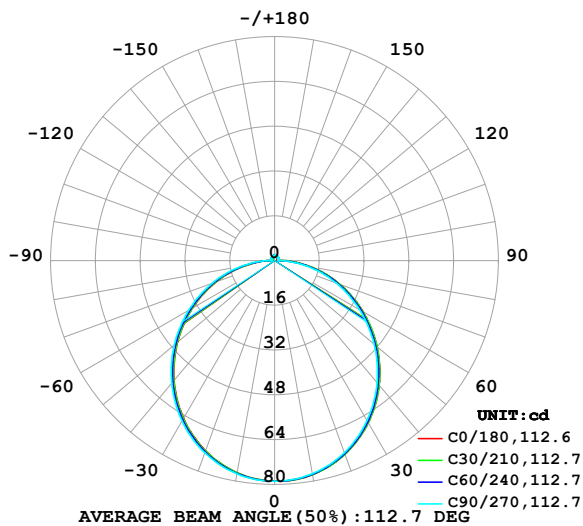


LUMINAIRE PHOTOMETRIC TEST REPORT

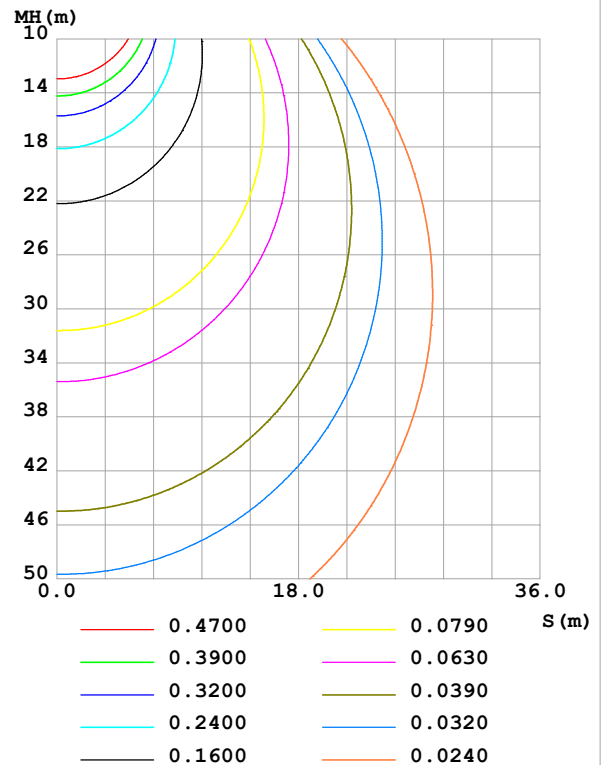
Test:U:24.00V I:0.2421A P:5.810W PF:1.000 Freq:0Hz Lamp Flux:240.682x1 lm		
NAME: SF16-24v-5050-70-DMX-4000K-(2)	TYPE:	WEIGHT:
SPEC.:	DIM.: Length=1m	SERIAL No.:
MFR.: OLympia lighting	SUR.:	Shielding Angle:

DATA OF LAMP		PHOTOMETRIC DATA Eff: 41.42 lm/W			
MODEL	5050	Imax (cd)	78.85	S/MH(C0/180)	1.23
NOMINAL POWER(W)		LOR(%)	100.0	S/MH(C90/270)	1.25
RATED VOLTAGE(V)	24	TOTAL FLUX(lm)	240.68	η UP,DN(C0-180)	1.9,48.2
NOMINAL FLUX(lm)	240.682	CIE CLASS	DIRECT	η UP,DN(C180-360)	1.9,48.0
LAMPS INSIDE	1	η up (%)	3.8	CIBSE SHR NOM	1.25
TEST VOLTAGE(V)		η down (%)	96.2	CIBSE SHR MAX	1.35

LUMINOUS INTENSITY DISTRIBUTION DIAGRAM



C0 PLANE ISOLUX DIAGRAM (UNIT:lx)



C Range: 0 - 360DEG
C Interval: 30.0DEG
Test Speed: HIGH
Temperature:25.3℃
Operators:
Test Date:2025-03-12

γ Range: 0 - 180DEG
 γ Interval: 1.0DEG
Test System:EVERFINE GO-2000B_V1 SYSTEM V2.00.488
Humidity:65.0%
Test Distance:6.360m [K=1.0000]
Remarks:

ZONAL FLUX DIAGRAM

ZONAL FLUX DIAGRAM:

γ	C0	C45	C90	C135	C180	C225	C270	C315	γ	Φ zone	Φ total	%lum, lamp
10	77.65	77.62	77.35	77.06	76.99	77.09	77.37	77.67	0- 10	7.454	7.454	3.1,3.1
20	73.55	73.48	72.99	72.45	72.26	72.51	73.05	73.58	10- 20	21.31	28.76	12,12
30	66.93	66.74	66.04	65.33	65.10	65.46	66.20	66.92	20- 30	32.18	60.94	25.3,25.3
40	58.13	57.86	56.97	56.12	55.92	56.33	57.24	58.13	30- 40	38.67	99.61	41.4,41.4
50	47.75	47.43	46.42	45.46	45.28	45.75	46.74	47.78	40- 50	40.11	139.7	58.1,58.1
60	36.44	36.09	35.01	34.00	33.82	34.35	35.40	36.48	50- 60	36.63	176.4	73.3,73.3
70	24.80	24.43	23.34	22.30	22.14	22.70	23.78	24.83	60- 70	29.09	205.4	85.4,85.4
80	13.24	12.88	11.79	10.75	10.64	11.17	12.21	13.27	70- 80	18.74	224.2	93.1,93.1
90	3.698	2.892	1.294	1.945	2.331	2.049	1.400	3.092	80- 90	7.275	231.5	96.2,96.2
100	1.099	1.270	1.334	1.236	0.9459	1.192	1.395	1.207	90-100	1.554	233.0	96.8,96.8
110	1.159	1.341	1.378	1.344	1.073	1.303	1.473	1.270	100-110	1.326	234.3	97.4,97.4
120	1.298	1.433	1.444	1.451	1.214	1.398	1.539	1.364	110-120	1.340	235.7	97.9,97.9
130	1.430	1.518	1.507	1.550	1.347	1.495	1.594	1.445	120-130	1.297	237.0	98.5,98.5
140	1.548	1.605	1.603	1.651	1.482	1.590	1.660	1.526	130-140	1.189	238.2	99,99
150	1.655	1.685	1.753	1.744	1.618	1.687	1.724	1.611	140-150	1.025	239.2	99.4,99.4
160	1.753	1.762	1.863	1.833	1.750	1.779	1.796	1.722	150-160	0.8006	240.0	99.7,99.7
170	1.811	1.849	1.912	1.901	1.845	1.867	1.863	1.845	160-170	0.5153	240.5	99.9,99.9
180	1.863	1.912	1.935	1.928	1.866	1.915	1.935	1.926	170-180	0.1800	240.7	100,100
DEG	LUMINOUS INTENSITY:cd									UNIT:lm		

Conical surface Flux(90deg): 119.81 lm

%lum = 49.8%

%lamp = 49.8%

Conical surface Flux(130deg): 192.05 lm

%lum = 79.8%

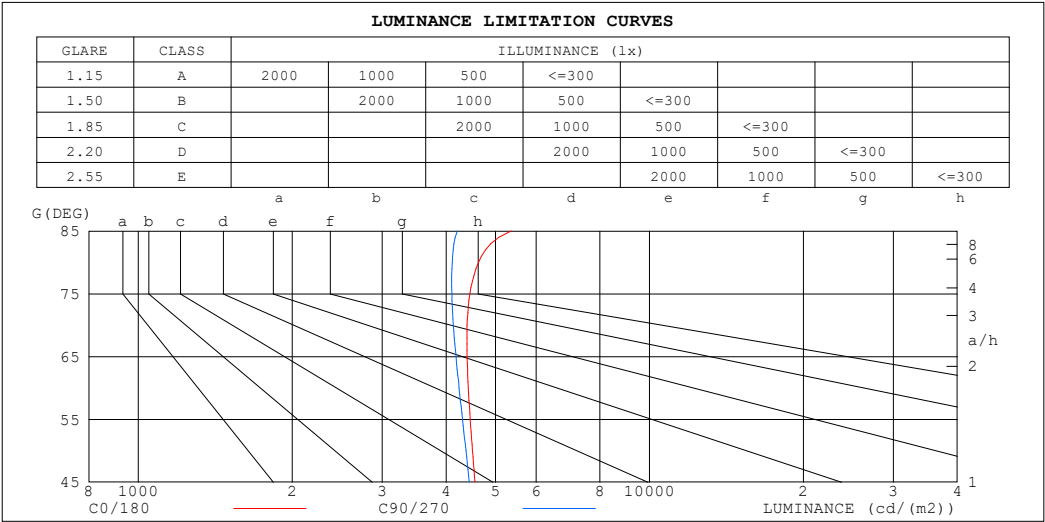
%lamp = 79.8%

C Range: 0 - 360DEG
 C Interval: 30.0DEG
 Test Speed: HIGH
 Temperature:25.3℃
 Operators:
 Test Date:2025-03-12

γ Range: 0 - 180DEG
 γ Interval: 1.0DEG
 Test System:EVERFINE GO-2000B_V1 SYSTEM V2.00.488
 Humidity:65.0%
 Test Distance:6.360m [K=1.0000]
 Remarks:

LUMINANCE LIMITATION CURVES

Test:U:24.00V I:0.2421A P:5.810W PF:1.000 Freq:0Hz Lamp Flux:240.682x1 lm		
NAME: SF16-24v-5050-70-DMX-4000K-(2)	TYPE:	WEIGHT:
SPEC.:	DIM.: Length=1m	SERIAL No.:
MFR.: OLympia lighting	SUR.:	Shielding Angle:



LUMINANCE cd/(m2)		
G (DEG)	C0/180	C90/270
85	5363	4209
80	4627	4112
75	4452	4105
70	4398	4134
65	4398	4183
60	4421	4242
55	4459	4307
50	4506	4375
45	4554	4441

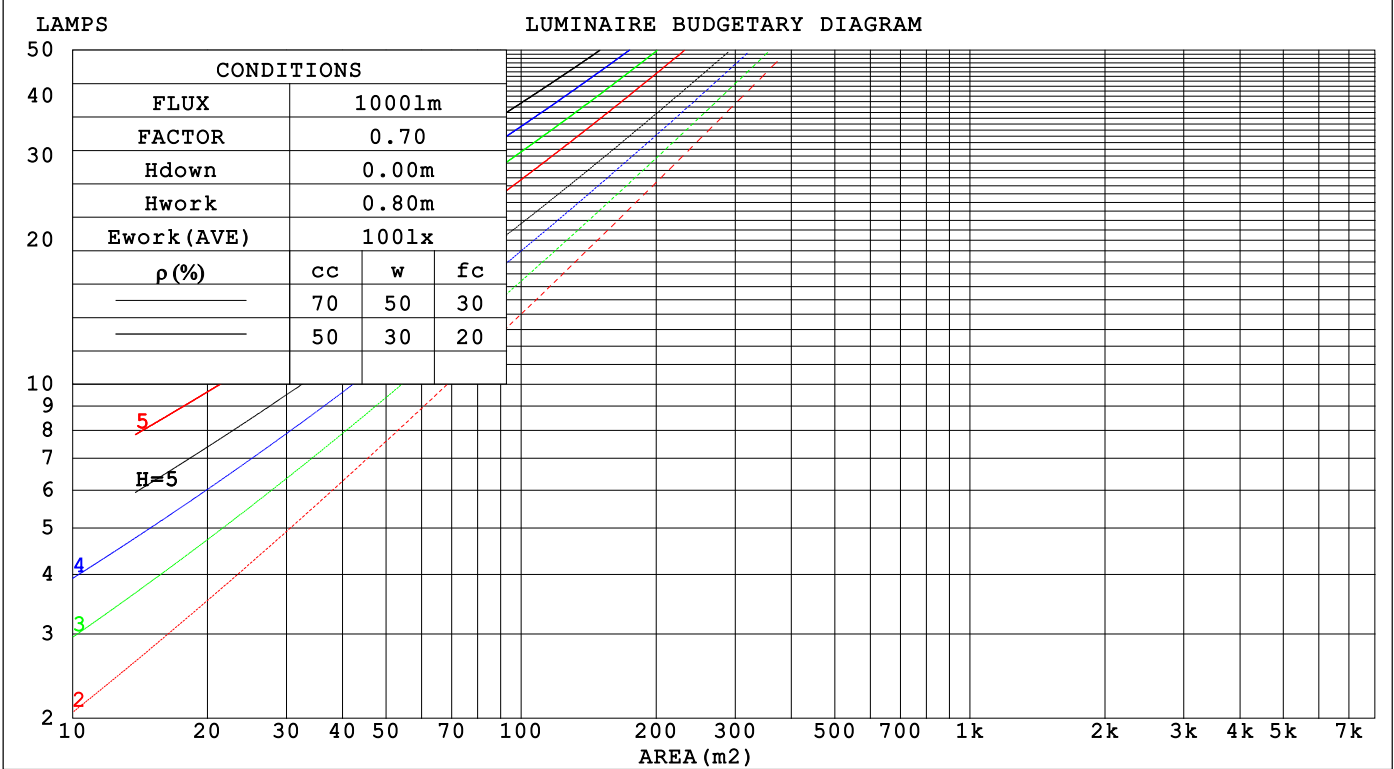
C Range: 0 - 360DEG
C Interval: 30.0DEG
Test Speed: HIGH
Temperature:25.3℃
Operators:
Test Date:2025-03-12

γ Range: 0 - 180DEG
γ Interval: 1.0DEG
Test System:EVERFINE GO-2000B_V1 SYSTEM V2.00.488
Humidity:65.0%
Test Distance:6.360m [K=1.0000]
Remarks:

CU AND LUMINAIRE BUDGETARY ESTIMATE DIAGRAM

Test:U:24.00V I:0.2421A P:5.810W PF:1.000 Freq:0Hz		
Lamp Flux:240.682x1 lm		
NAME: SF16-24v-5050-70-DMX-4000K-(2)	TYPE:	WEIGHT:
SPEC.:	DIM.: Length=1m	SERIAL No.:
MFR.: OLYMPIA lighting	SUR.:	Shielding Angle:

pcc	80%			70%			50%			30%			10%			0
p _w	50%	30%	10%	50%	30%	10%	50%	30%	10%	50%	30%	10%	50%	30%	10%	0
p _{fc}	20%			20%			20%			20%			20%			0
RCR	RCR:Room Cavity Ratio Coefficients of Utilization(CU)															
0.0	1.18	1.18	1.18	1.15	1.15	1.15	1.09	1.09	1.09	1.04	1.04	1.04	.99	.99	.99	.96
1.0	1.02	.98	.93	.99	.95	.92	.94	.91	.88	.90	.87	.85	.86	.83	.81	.79
2.0	.89	.81	.76	.86	.80	.74	.82	.77	.72	.78	.74	.70	.75	.71	.68	.65
3.0	.78	.69	.62	.76	.68	.62	.72	.65	.60	.69	.63	.59	.66	.61	.57	.55
4.0	.69	.60	.53	.67	.59	.52	.64	.57	.51	.61	.55	.50	.59	.53	.49	.46
5.0	.61	.52	.45	.60	.51	.45	.57	.50	.44	.55	.48	.43	.53	.47	.42	.40
6.0	.55	.46	.39	.54	.45	.39	.52	.44	.38	.50	.43	.38	.48	.42	.37	.35
7.0	.50	.41	.35	.49	.40	.34	.47	.39	.34	.45	.38	.33	.43	.38	.33	.31
8.0	.45	.37	.31	.45	.36	.31	.43	.36	.30	.41	.35	.30	.40	.34	.29	.28
9.0	.42	.33	.28	.41	.33	.28	.39	.32	.27	.38	.32	.27	.37	.31	.27	.25
10.0	.38	.30	.25	.38	.30	.25	.37	.30	.25	.35	.29	.24	.34	.28	.24	.22

C Range: 0 - 360DEG
C Interval: 30.0DEG
Test Speed: HIGH
Temperature:25.3℃
Operators:
Test Date:2025-03-12γ Range: 0 - 180DEG
γ Interval: 1.0DEG
Test System:EVERFINE GO-2000B_V1 SYSTEM V2.00.488
Humidity:65.0%
Test Distance:6.360m [K=1.0000]
Remarks:

WEC AND CCEC

Test:U:24.00V I:0.2421A P:5.810W PF:1.000 Freq:0Hz Lamp Flux:240.682x1 lm		
NAME: SF16-24v-5050-70-DMX-4000K-(2)	TYPE:	WEIGHT:
SPEC.:	DIM.: Length=1m	SERIAL No.:
MFR.: OLYMPIA lighting	SUR.:	Shielding Angle:

pcc	80%			70%			50%			30%			10%			0
pw	50%	30%	10%	50%	30%	10%	50%	30%	10%	50%	30%	10%	50%	30%	10%	0
pfc	20%			20%			20%			20%			20%			0
RCR	RCR:Room Cavity Ratio						Wall Exitance Coefficients(WEC)									
0.0																
1.0	.326	.185	.059	.318	.181	.058	.302	.173	.055	.288	.166	.053	.275	.159	.051	
2.0	.301	.165	.051	.293	.162	.050	.280	.156	.048	.267	.150	.047	.255	.144	.046	
3.0	.276	.147	.044	.269	.144	.043	.257	.139	.042	.245	.134	.041	.235	.130	.040	
4.0	.253	.131	.039	.247	.129	.038	.236	.125	.037	.226	.121	.037	.216	.118	.036	
5.0	.233	.119	.034	.228	.117	.034	.218	.113	.033	.209	.110	.033	.200	.107	.032	
6.0	.215	.108	.031	.211	.106	.031	.202	.103	.030	.194	.101	.030	.186	.098	.029	
7.0	.200	.099	.028	.196	.098	.028	.188	.095	.027	.180	.092	.027	.173	.090	.026	
8.0	.186	.091	.026	.183	.090	.025	.175	.088	.025	.169	.085	.025	.162	.083	.024	
9.0	.175	.084	.024	.171	.083	.023	.165	.081	.023	.158	.079	.023	.153	.078	.022	
10.0	.164	.079	.022	.161	.078	.022	.155	.076	.021	.149	.074	.021	.144	.072	.021	

pcc	80%			70%			50%			30%			10%			0
pw	50%	30%	10%	50%	30%	10%	50%	30%	10%	50%	30%	10%	50%	30%	10%	0
pfc	20%			20%			20%			20%			20%			0
RCR	RCR:Room Cavity Ratio						Ceiling Cavity Exitance Coefficients (CCEC)									
0.0	.220	.220	.220	.188	.188	.188	.128	.128	.128	.074	.074	.074	.024	.024	.024	
1.0	.211	.185	.163	.180	.159	.140	.123	.109	.097	.071	.063	.056	.023	.020	.018	
2.0	.203	.162	.127	.174	.139	.109	.119	.096	.076	.069	.056	.045	.022	.018	.015	
3.0	.195	.144	.103	.168	.124	.090	.115	.086	.063	.066	.050	.037	.021	.016	.012	
4.0	.188	.131	.088	.161	.113	.076	.111	.079	.054	.064	.046	.032	.021	.015	.010	
5.0	.180	.121	.077	.155	.104	.067	.107	.073	.047	.062	.043	.028	.020	.014	.009	
6.0	.173	.112	.069	.149	.097	.060	.103	.068	.043	.059	.040	.025	.019	.013	.008	
7.0	.166	.106	.063	.143	.092	.055	.099	.064	.039	.057	.038	.023	.019	.012	.008	
8.0	.160	.100	.059	.137	.087	.051	.095	.061	.036	.055	.036	.022	.018	.012	.007	
9.0	.153	.095	.055	.132	.082	.048	.092	.058	.034	.053	.034	.020	.017	.011	.007	
10.0	.148	.091	.053	.127	.079	.046	.088	.055	.033	.052	.033	.020	.017	.011	.006	

C Range: 0 - 360DEG
C Interval: 30.0DEG
Test Speed: HIGH
Temperature:25.3℃
Operators:
Test Date:2025-03-12

γ Range: 0 - 180DEG
γ Interval: 1.0DEG
Test System:EVERFINE GO-2000B_V1 SYSTEM V2.00.488
Humidity:65.0%
Test Distance:6.360m [K=1.0000]
Remarks:

UGR(Unified Glare Rating) Table

Test:U:24.00V I:0.2421A P:5.810W PF:1.000 Freq:0Hz Lamp Flux:240.682x1 lm											
NAME: SF16-24v-5050-70-DMX-4000K-(2)						TYPE:		WEIGHT:			
SPEC.:						DIM.: Length=1m		SERIAL No.:			
MFR.: OLympia lighting						SUR.:		Shielding Angle:			
ceiling/cavity	0.7	0.7	0.5	0.5	0.3	0.7	0.7	0.5	0.5	0.3	
walls	0.5	0.3	0.5	0.3	0.3	0.5	0.3	0.5	0.3	0.3	
working plane	0.2	0.2	0.2	0.2	0.2	0.2	0.2	0.2	0.2	0.2	
Room dimensions		Viewed crosswise					Viewed endwise				
x = 2H y = 2H	2H	22.8	24.3	23.1	24.5	24.8	22.6	24.1	22.9	24.4	24.6
	3H	24.5	25.9	24.9	26.2	26.5	24.3	25.7	24.6	26.0	26.3
	4H	25.3	26.6	25.7	26.9	27.3	25.0	26.3	25.4	26.6	27.0
	6H	26.0	27.2	26.4	27.6	27.9	25.6	26.9	26.0	27.2	27.6
	8H	26.3	27.5	26.7	27.8	28.2	25.9	27.1	26.3	27.4	27.8
	12H	26.5	27.7	26.9	28.0	28.4	26.1	27.2	26.5	27.6	28.0
4H	2H	23.4	24.7	23.8	25.0	25.4	23.3	24.6	23.7	24.9	25.2
	3H	25.3	26.5	25.8	26.9	27.2	25.2	26.3	25.6	26.7	27.1
	4H	26.3	27.3	26.7	27.7	28.1	26.0	27.1	26.5	27.5	27.9
	6H	27.1	28.1	27.6	28.5	28.9	26.8	27.7	27.3	28.2	28.6
	8H	27.5	28.4	28.0	28.8	29.3	27.1	28.0	27.6	28.4	28.9
	12H	27.8	28.6	28.3	29.1	29.6	27.4	28.2	27.9	28.6	29.1
8H	4H	26.6	27.5	27.1	27.9	28.4	26.4	27.3	26.9	27.7	28.2
	6H	27.7	28.4	28.2	28.9	29.4	27.4	28.1	27.9	28.6	29.1
	8H	28.2	28.8	28.7	29.3	29.8	27.8	28.5	28.3	28.9	29.5
	12H	28.6	29.2	29.2	29.7	30.3	28.2	28.7	28.7	29.2	29.8
12H	4H	26.7	27.5	27.1	27.9	28.4	26.5	27.3	26.9	27.7	28.2
	6H	27.8	28.4	28.3	28.9	29.4	27.5	28.1	28.0	28.6	29.2
	8H	28.3	28.9	28.9	29.4	30.0	28.0	28.5	28.5	29.1	29.6
Variations with the observer position at spacings(CIE Pub.117):											
S = 1.0H		+ 0.1 / - 0.2					+ 0.1 / - 0.2				
1.5H		+ 0.2 / - 0.3					+ 0.2 / - 0.3				
2.0H		+ 0.1 / - 0.3					+ 0.1 / - 0.3				

CIE Pub.117, 240.7 lm Total Lamp Luminous Flux Correct (8log(F/F0) = -4.9)
Area: 0.0165 m2

C Range: 0 - 360DEG
C Interval: 30.0DEG
Test Speed: HIGH
Temperature:25.3℃
Operators:
Test Date:2025-03-12

γ Range: 0 - 180DEG
γ Interval: 1.0DEG
Test System:EVERFINE GO-2000B_V1 SYSTEM V2.00.488
Humidity:65.0%
Test Distance:6.360m [K=1.0000]
Remarks:

UTILIZATION FACTORS TABLE

Test:U:24.00V I:0.2421A P:5.810W PF:1.000 Freq:0Hz Lamp Flux:240.682x1 lm		
NAME: SF16-24v-5050-70-DMX-4000K-(2)	TYPE:	WEIGHT:
SPEC.:	DIM.: Length=1m	SERIAL No.:
MFR.: OLympia lighting	SUR.:	Shielding Angle:

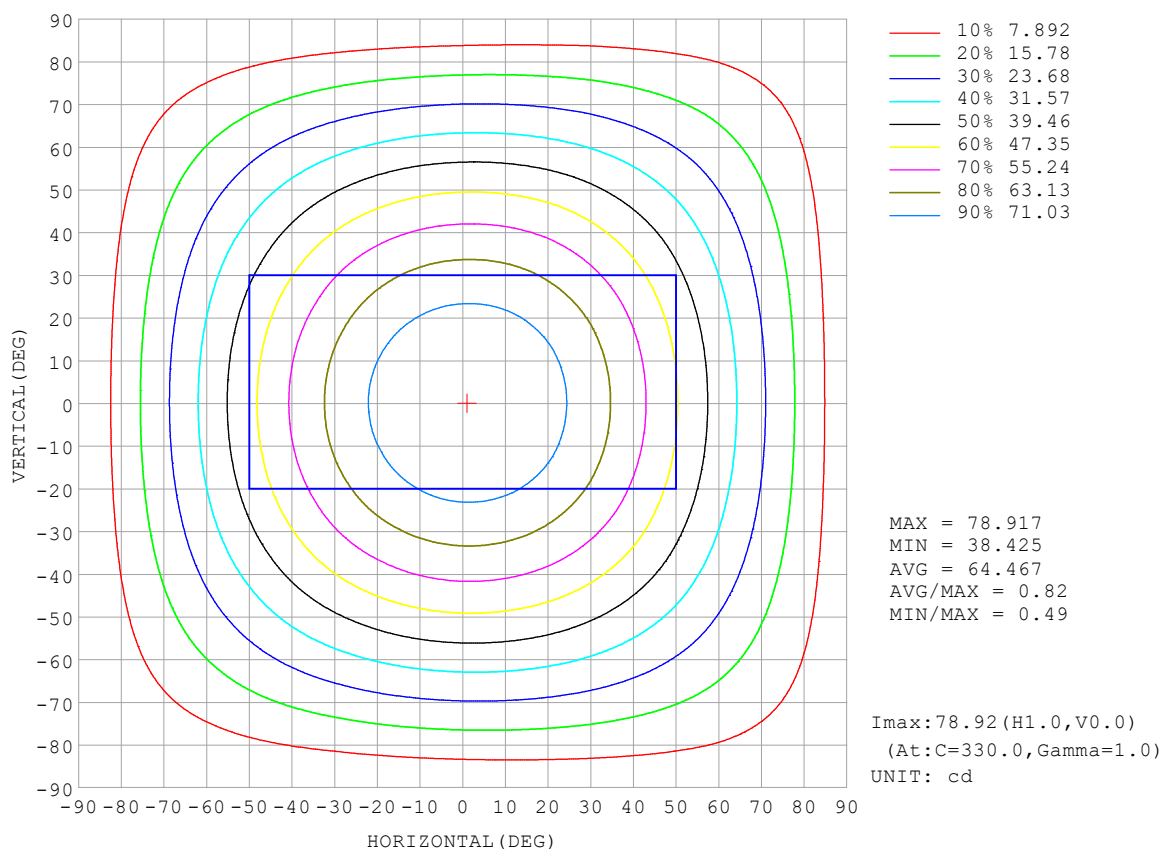
REFLECTANCE										
Ceiling	0.8	0.8	0.8	0.7	0.7	0.7	0.5	0.5	0.5	0
Walls	0.7	0.5	0.3	0.7	0.5	0.3	0.7	0.5	0.3	0
Working plane	0.2	0.2	0.2	0.2	0.2	0.2	0.2	0.2	0.2	0
ROOM INDEX	UTILIZATION FACTORS (PERCENT) $k(RI) \times RCR = 5$									
$k = 0.60$	56	44	37	55	44	37	53	43	36	30
0.80	65	54	46	64	53	46	62	52	45	38
1.00	74	62	55	72	62	54	70	63	54	46
1.25	81	70	62	79	69	62	76	67	61	53
1.50	86	75	68	84	74	67	80	72	66	58
2.00	93	84	77	91	82	76	87	80	74	65
2.50	97	88	82	94	87	81	90	84	79	69
3.00	100	93	87	98	91	86	93	88	83	73
4.00	104	98	93	102	96	92	97	92	88	78
5.00	107	102	97	104	99	95	99	95	92	81
ROOM INDEX	UF (total)									Direct
According to DIN EN 13032-2 2004			Suspended					SHRNOM = 1.25		

C Range: 0 - 360DEG
 C Interval: 30.0DEG
 Test Speed: HIGH
 Temperature: 25.3°C
 Operators:
 Test Date: 2025-03-12

γ Range: 0 - 180DEG
 γ Interval: 1.0DEG
 Test System: EVERFINE GO-2000B_V1 SYSTEM V2.00.488
 Humidity: 65.0%
 Test Distance: 6.360m [K=1.0000]
 Remarks:

ISOCANDELA DIAGRAM

Test:U:24.00V I:0.2421A P:5.810W PF:1.000 Freq:0Hz Lamp Flux:240.682x1 lm		
NAME: SF16-24v-5050-70-DMX-4000K-(2)	TYPE:	WEIGHT:
SPEC.:	DIM.: Length=1m	SERIAL No.:
MFR.: OLympia lighting	SUR.:	Shielding Angle:

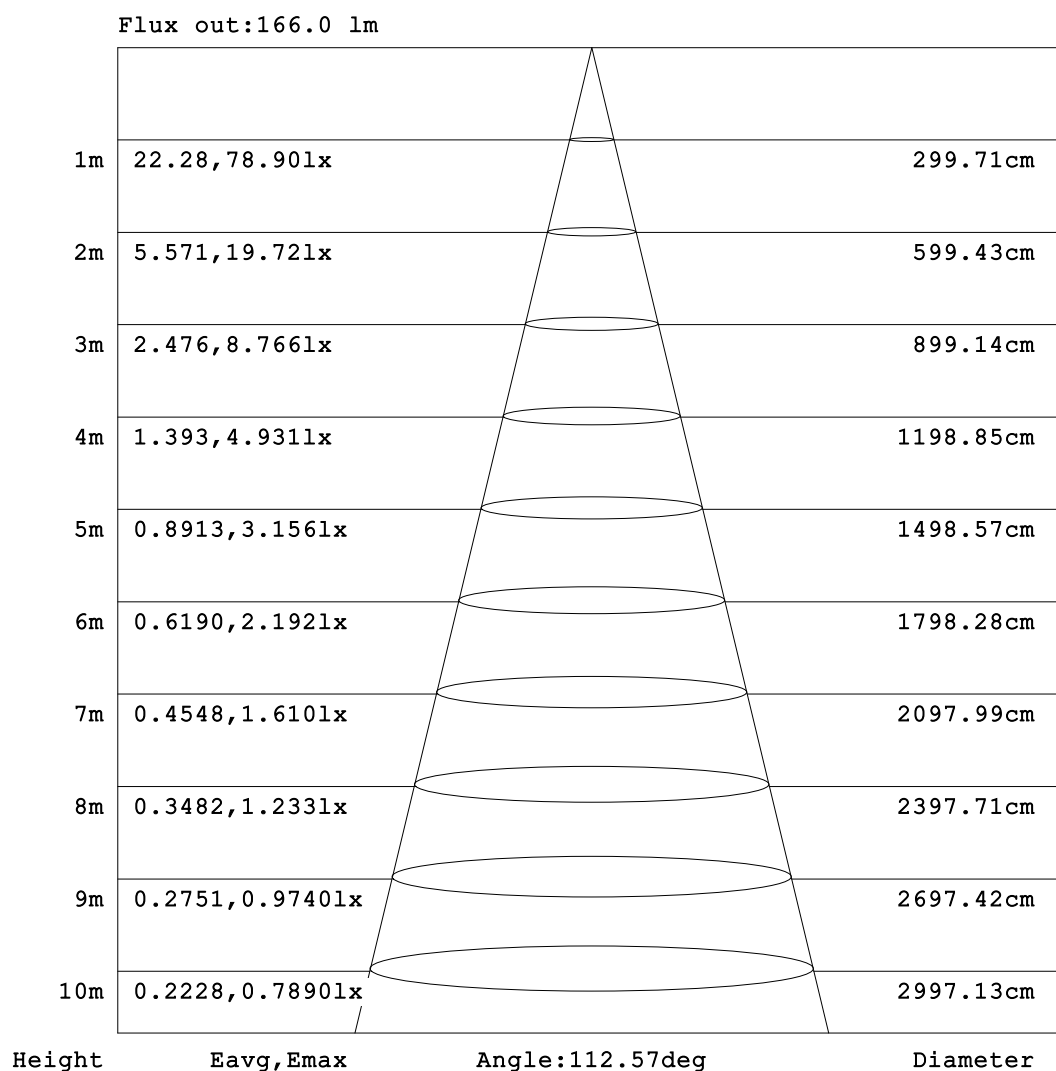


C Range: 0 - 360DEG
C Interval: 30.0DEG
Test Speed: HIGH
Temperature:25.3℃
Operators:
Test Date:2025-03-12

γ Range: 0 - 180DEG
γ Interval: 1.0DEG
Test System:EVERFINE GO-2000B_V1 SYSTEM V2.00.488
Humidity:65.0%
Test Distance:6.360m [K=1.0000]
Remarks:

AAI Figure

Test:U:24.00V I:0.2421A P:5.810W PF:1.000 Freq:0Hz Lamp Flux:240.682x1 lm		
NAME: SF16-24v-5050-70-DMX-4000K-(2)	TYPE:	WEIGHT:
SPEC.:	DIM.: Length=1m	SERIAL No.:
MFR.: OLympia lighting	SUR.:	Shielding Angle:



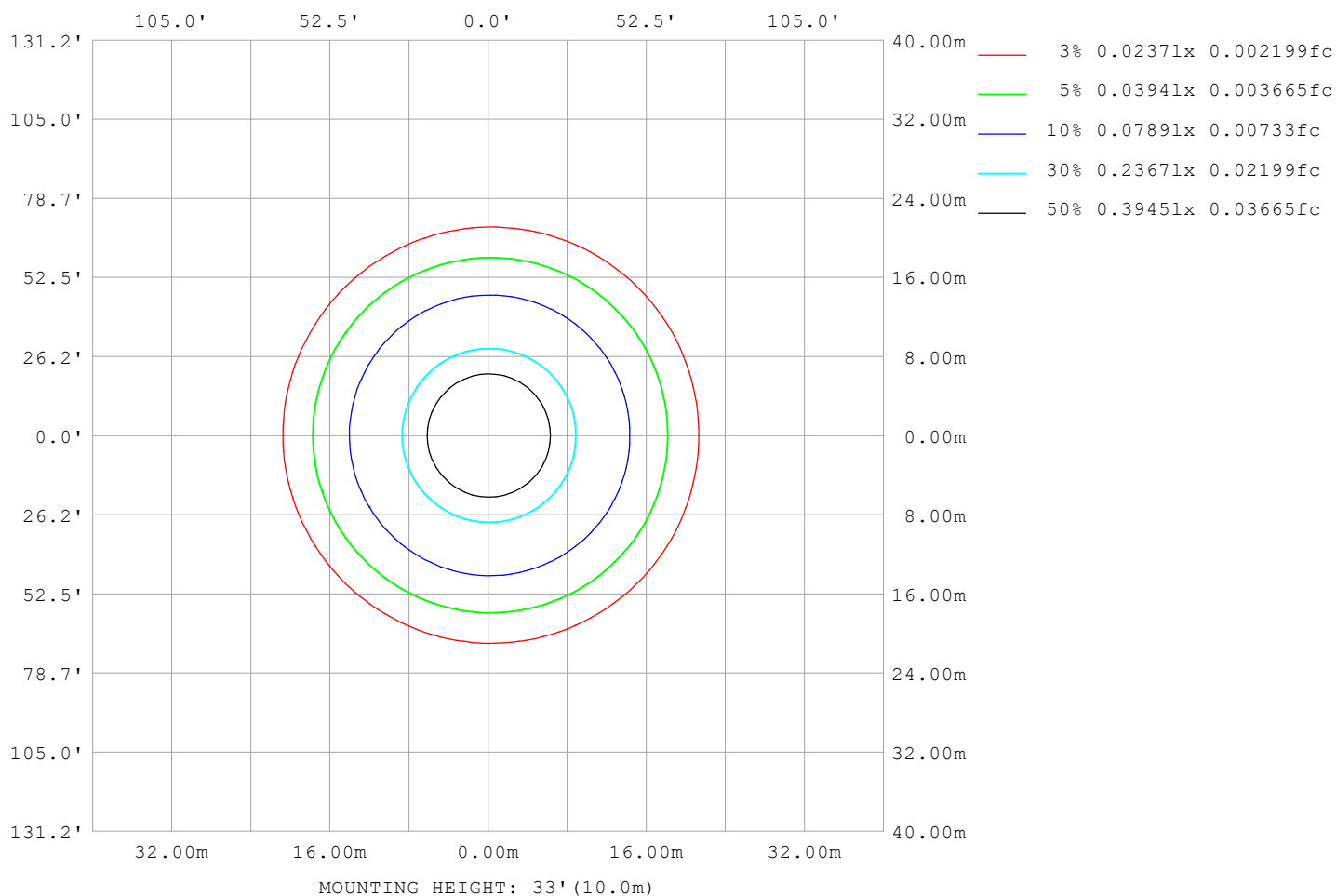
Note:The Curves indicate the illuminated area and the average illumination when the luminaire is at different distance.

C Range: 0 - 360DEG
C Interval: 30.0DEG
Test Speed: HIGH
Temperature:25.3℃
Operators:
Test Date:2025-03-12

γ Range: 0 - 180DEG
γ Interval: 1.0DEG
Test System:EVERFINE GO-2000B_V1 SYSTEM V2.00.488
Humidity:65.0%
Test Distance:6.360m [K=1.0000]
Remarks:

ISOLUX DIAGRAM

Test:U:24.00V I:0.2421A P:5.810W PF:1.000 Freq:0Hz Lamp Flux:240.682x1 lm		
NAME: SF16-24v-5050-70-DMX-4000K-(2)	TYPE:	WEIGHT:
SPEC.:	DIM.: Length=1m	SERIAL No.:
MFR.: OLympia lighting	SUR.:	Shielding Angle:



C Range: 0 - 360DEG
C Interval: 30.0DEG
Test Speed: HIGH
Temperature: 25.3°C
Operators:
Test Date: 2025-03-12

γ Range: 0 - 180DEG
γ Interval: 1.0DEG
Test System: EVERFINE GO-2000B_V1 SYSTEM V2.00.488
Humidity: 65.0%
Test Distance: 6.360m [K=1.0000]
Remarks:

LED Avg.L Report

Test:U:24.00V I:0.2421A P:5.810W PF:1.000 Freq:0Hz Lamp Flux:240.682x1 lm		
NAME: SF16-24v-5050-70-DMX-4000K-(2)	TYPE:	WEIGHT:
SPEC.:	DIM.: Length=1m	SERIAL No.:
MFR.: OLympia lighting	SUR.:	Shielding Angle:

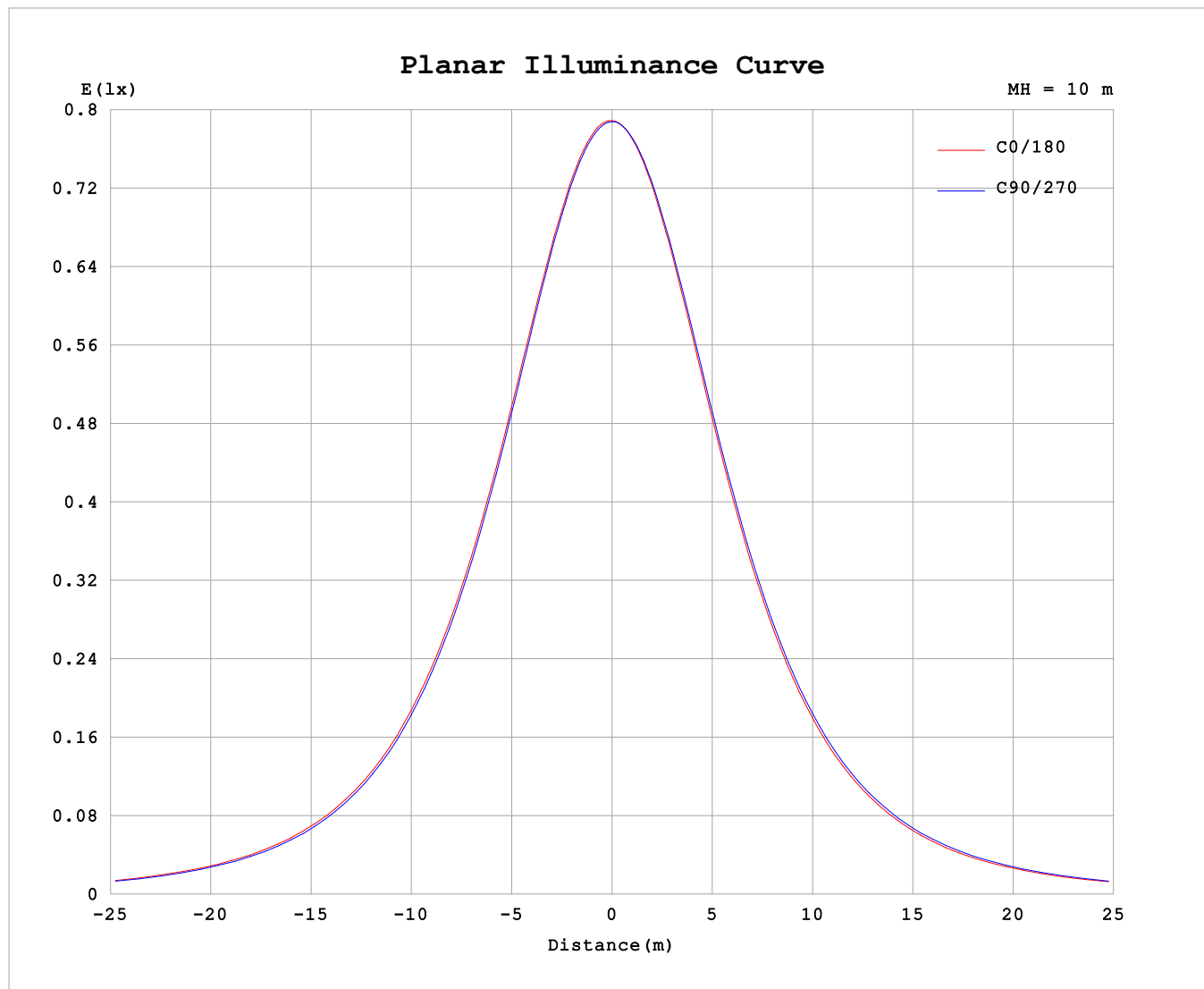
AvgL	cd/m2
L_0~180 (65) av	4203
L_0~180 (75) av	4140
L_0~180 (85) av	4573
L_90~270 (65) av	4216
L_90~270 (75) av	4156
L_90~270 (85) av	4362
L_45 (65) av	4218
L_45 (75) av	4161
L_45 (85) av	4468

Standard: GB/T 29293-2012

C Range: 0 - 360DEG
C Interval: 30.0DEG
Test Speed: HIGH
Temperature:25.3℃
Operators:
Test Date:2025-03-12

γ Range: 0 - 180DEG
γ Interval: 1.0DEG
Test System:EVERFINE GO-2000B_V1 SYSTEM V2.00.488
Humidity:65.0%
Test Distance:6.360m [K=1.0000]
Remarks:

Planar Illuminance Curve



C Range: 0 - 360DEG
C Interval: 30.0DEG
Test Speed: HIGH
Temperature: 25.3 °C
Operators:
Test Date: 2025-03-12

γ Range: 0 - 180DEG
 γ Interval: 1.0DEG
Test System: EVERFINE GO-2000B_V1 SYSTEM V2.00.488
Humidity: 65.0%
Test Distance: 6.360m [K=1.0000]
Remarks:

LUMINOUS DISTRIBUTION INTENSITY DATA

Test:U:24.00V I:0.2421A P:5.810W PF:1.000 Freq:0Hz Lamp Flux:240.682x1 lm		
NAME: SF16-24v-5050-70-DMX-4000K-(2)	TYPE:	WEIGHT:
SPEC.:	DIM.: Length=1m	SERIAL No.:
MFR.: OLYMPIA lighting	SUR.:	Shielding Angle:

Table--1

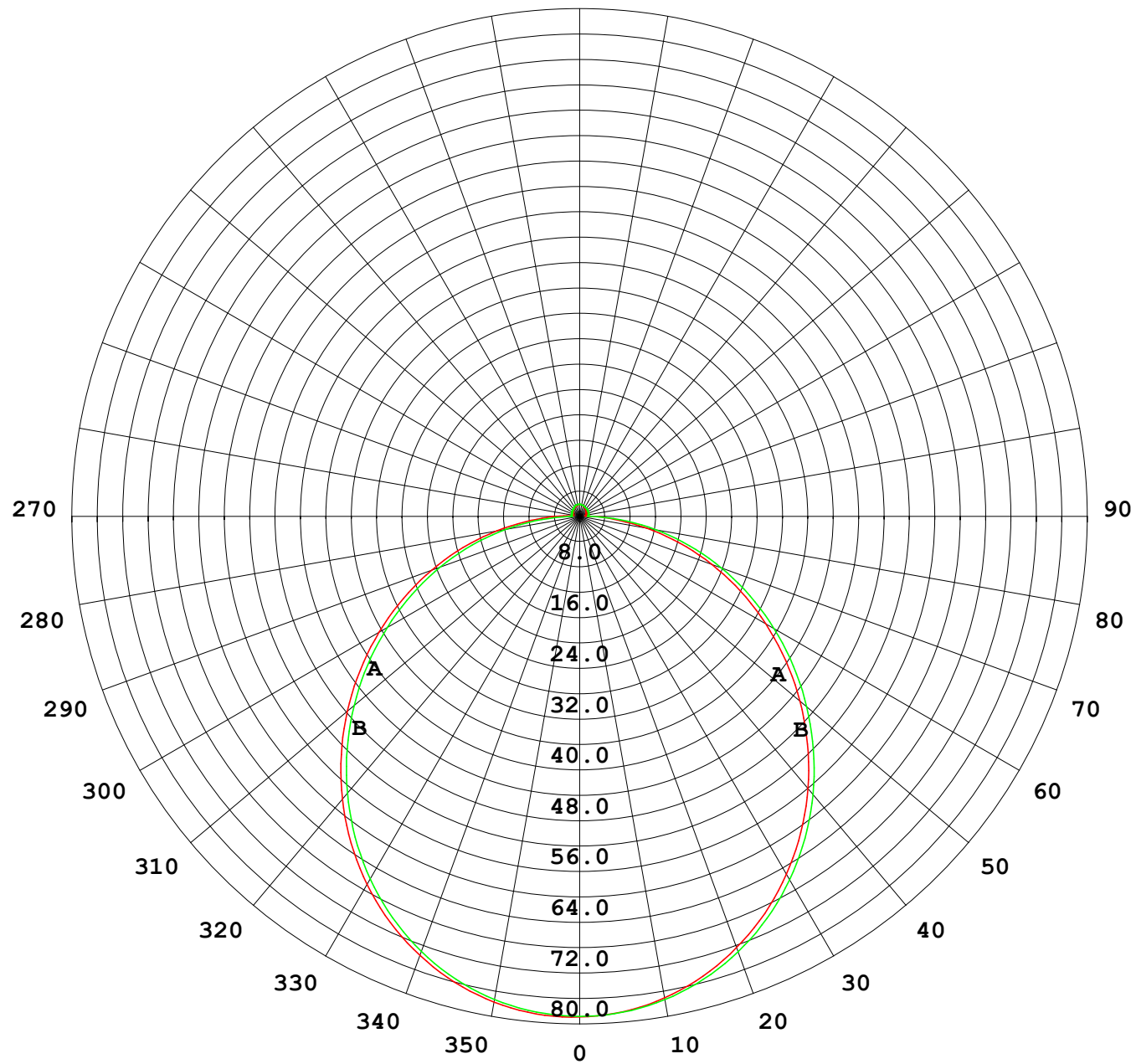
UNIT: cd

C (DEG) γ (DEG)	0	30	60	90	120	150	180	210	240	270	300	330						
0	78.8	78.8	78.8	78.8	78.8	78.8	78.8	78.8	78.8	78.8	78.8	78.8						
5	78.6	78.6	78.6	78.5	78.3	78.3	78.3	78.3	78.4	78.5	78.6	78.7						
10	77.6	77.7	77.5	77.4	77.1	77.0	77.0	77.0	77.2	77.4	77.6	77.7						
15	75.9	76.0	75.8	75.5	75.2	75.0	75.0	75.0	75.3	75.6	75.9	76.1						
20	73.6	73.6	73.3	73.0	72.6	72.3	72.3	72.4	72.7	73.1	73.5	73.7						
25	70.6	70.5	70.3	69.8	69.3	69.0	69.0	69.1	69.5	69.9	70.4	70.7						
30	66.9	66.9	66.5	66.0	65.5	65.2	65.1	65.2	65.7	66.2	66.8	67.1						
35	62.8	62.8	62.3	61.7	61.1	60.8	60.7	60.9	61.4	62.0	62.6	62.9						
40	58.1	58.1	57.6	57.0	56.3	56.0	55.9	56.1	56.6	57.2	58.0	58.3						
45	53.1	53.1	52.5	51.8	51.1	50.8	50.7	50.9	51.5	52.1	52.9	53.3						
50	47.7	47.7	47.1	46.4	45.6	45.3	45.3	45.4	46.1	46.7	47.6	48.0						
55	42.2	42.1	41.5	40.8	40.0	39.6	39.6	39.8	40.4	41.1	42.0	42.4						
60	36.4	36.4	35.8	35.0	34.2	33.8	33.8	34.0	34.7	35.4	36.3	36.7						
65	30.6	30.6	30.0	29.2	28.4	27.9	28.0	28.2	28.8	29.6	30.5	30.9						
70	24.8	24.7	24.1	23.3	22.5	22.1	22.1	22.4	23.0	23.8	24.6	25.1						
75	19.0	18.9	18.3	17.5	16.7	16.3	16.4	16.6	17.2	18.0	18.8	19.2						
80	13.2	13.2	12.5	11.8	10.9	10.6	10.6	10.8	11.5	12.2	13.1	13.5						
85	7.71	7.60	6.84	6.06	5.25	5.27	5.45	5.45	5.82	6.49	7.36	7.81						
90	3.70	3.43	2.35	1.29	1.70	2.19	2.33	2.23	1.87	1.40	2.62	3.57						
95	1.30	1.27	1.31	1.32	1.24	1.13	0.91	1.06	1.26	1.33	1.26	1.23						
100	1.10	1.23	1.30	1.33	1.28	1.19	0.95	1.08	1.31	1.39	1.29	1.12						
105	1.10	1.26	1.33	1.35	1.33	1.26	1.01	1.13	1.36	1.44	1.34	1.12						
110	1.16	1.31	1.37	1.38	1.37	1.31	1.07	1.19	1.41	1.47	1.37	1.17						
115	1.23	1.37	1.41	1.40	1.42	1.38	1.14	1.25	1.45	1.51	1.42	1.22						
120	1.30	1.42	1.45	1.44	1.47	1.43	1.21	1.31	1.49	1.54	1.46	1.27						
125	1.37	1.47	1.49	1.48	1.51	1.49	1.28	1.36	1.53	1.56	1.49	1.32						
130	1.43	1.52	1.51	1.51	1.56	1.54	1.35	1.42	1.57	1.59	1.53	1.36						
135	1.49	1.57	1.56	1.54	1.61	1.59	1.42	1.47	1.61	1.63	1.57	1.39						
140	1.55	1.61	1.60	1.60	1.66	1.65	1.48	1.53	1.65	1.66	1.61	1.45						
145	1.60	1.65	1.66	1.67	1.71	1.69	1.55	1.58	1.69	1.68	1.64	1.50						
150	1.65	1.68	1.69	1.75	1.75	1.74	1.62	1.64	1.74	1.72	1.68	1.54						
155	1.71	1.70	1.73	1.82	1.79	1.79	1.69	1.69	1.78	1.76	1.74	1.61						
160	1.75	1.74	1.78	1.86	1.83	1.84	1.75	1.75	1.81	1.80	1.78	1.66						
165	1.79	1.79	1.81	1.89	1.86	1.88	1.81	1.79	1.85	1.83	1.83	1.73						
170	1.81	1.83	1.86	1.91	1.89	1.91	1.85	1.85	1.89	1.86	1.86	1.83						
175	1.85	1.88	1.90	1.93	1.91	1.92	1.87	1.89	1.93	1.90	1.91	1.88						
180	1.86	1.90	1.93	1.93	1.93	1.93	1.87	1.90	1.93	1.93	1.93	1.92						

C Range: 0 - 360DEG
C Interval: 30.0DEG
Test Speed: HIGH
Temperature:25.3℃
Operators:
Test Date:2025-03-12

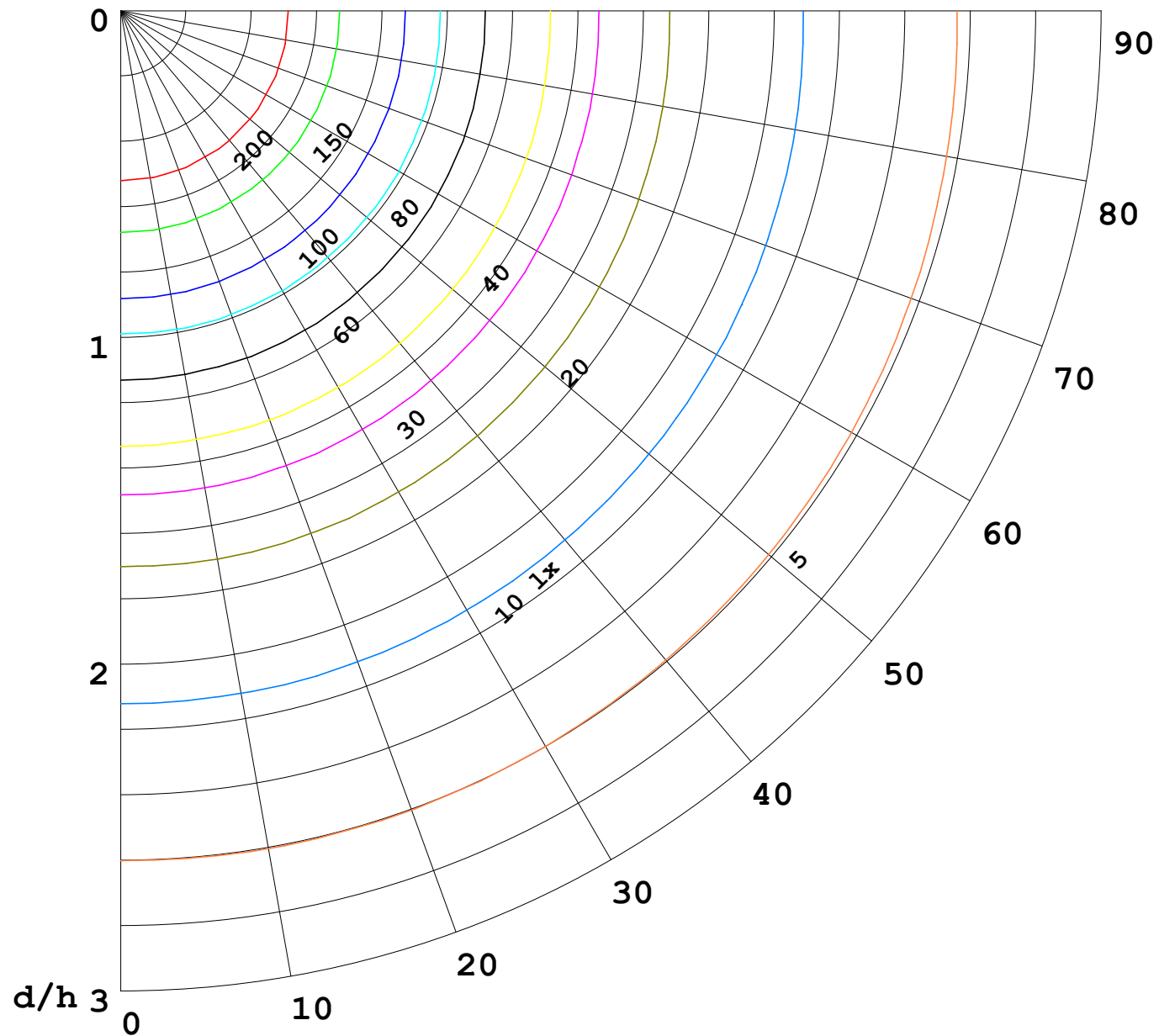
γ Range: 0 - 180DEG
γ Interval: 1.0DEG
Test System:EVERFINE GO-2000B_V1 SYSTEM V2.00.488
Humidity:65.0%
Test Distance:6.360m [K=1.0000]
Remarks:

I (cd)



1000 lm

$\kappa = 1$



F = 1000 lm
 K = 0.7
 Hcc = 0.8 m
 Hfc = 0.0 m
 Eave = 100 lx

	Pcc	Pw	Pfc
—————	70	50	30
—————	50	30	20

