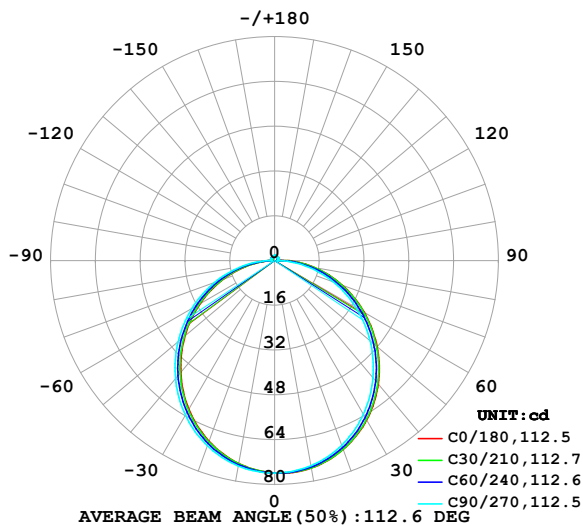


LUMINAIRE PHOTOMETRIC TEST REPORT

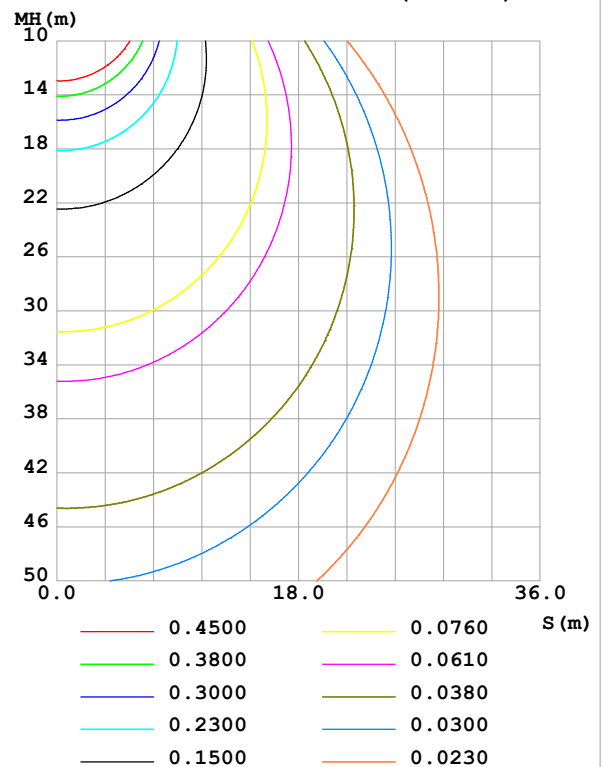
Test:U:24.00V I:0.2417A P:5.801W PF:1.000 Freq:0Hz Lamp Flux:231.48x1 lm		
NAME: SF16-24V-5050-70-DMX(3000K)-(1)	TYPE:	WEIGHT:
SPEC.:	DIM.: Length=1m	SERIAL No.:
MFR.: OLympia lighting	SUR.:	Shielding Angle:

DATA OF LAMP		PHOTOMETRIC DATA				Eff: 39.90 lm/W
MODEL	5050	I _{max} (cd)	76.00	S/MH(C0/180)	1.21	
NOMINAL POWER(W)		LOR(%)	100.0	S/MH(C90/270)	1.25	
RATED VOLTAGE(V)	24	TOTAL FLUX(lm)	231.48	η UP,DN(C0-180)	1.9,48.5	
NOMINAL FLUX(lm)	231.48	CIE CLASS	DIRECT	η UP,DN(C180-360)	1.9,47.7	
LAMPS INSIDE	1	η up (%)	3.8	CIBSE SHR NOM	1.25	
TEST VOLTAGE(V)		η down (%)	96.2	CIBSE SHR MAX	1.35	

LUMINOUS INTENSITY DISTRIBUTION DIAGRAM



C0 PLANE ISOLUX DIAGRAM (UNIT:lx)



C Range: 0 - 360DEG
C Interval: 30.0DEG
Test Speed: HIGH
Temperature:25.3℃
Operators:
Test Date:2025-03-12

γ Range: 0 - 180DEG
γ Interval: 1.0DEG
Test System:EVERFINE GO-2000B_V1 SYSTEM V2.00.488
Humidity:65.0%
Test Distance:6.360m [K=1.0000]
Remarks:

ZONAL FLUX DIAGRAM

ZONAL FLUX DIAGRAM:

γ	C0	C45	C90	C135	C180	C225	C270	C315	γ	Φ zone	Φ total	%lum,lamp
10	75.26	75.06	74.42	73.80	73.63	73.89	74.53	75.11	0- 10	7.176	7.176	3.1,3.1
20	71.77	71.37	70.20	69.02	68.62	69.21	70.36	71.50	10- 20	20.51	27.69	12,12
30	65.79	65.12	63.45	61.87	61.33	62.13	63.76	65.35	20- 30	30.97	58.66	25.3,25.3
40	57.62	56.76	54.69	52.78	52.19	53.15	55.11	57.08	30- 40	37.21	95.87	41.4,41.4
50	47.81	46.84	44.51	42.39	41.78	42.83	45.02	47.22	40- 50	38.58	134.5	58.1,58.1
60	36.99	35.98	33.55	31.30	30.71	31.80	34.07	36.39	50- 60	35.22	169.7	73.3,73.3
70	25.75	24.75	22.34	20.08	19.49	20.58	22.82	25.14	60- 70	27.96	197.6	85.4,85.4
80	14.59	13.59	11.21	9.042	8.493	9.514	11.70	13.97	70- 80	18.00	215.6	93.2,93.2
90	4.599	3.311	1.073	1.448	1.668	1.594	1.309	3.670	80- 90	7.058	222.7	96.2,96.2
100	0.9762	0.9871	1.134	1.129	0.9617	1.190	1.341	1.125	90-100	1.493	224.2	96.8,96.8
110	1.098	1.182	1.235	1.244	1.081	1.291	1.425	1.203	100-110	1.231	225.4	97.4,97.4
120	1.234	1.295	1.347	1.351	1.211	1.382	1.485	1.293	110-120	1.265	226.7	97.9,97.9
130	1.364	1.399	1.445	1.450	1.344	1.467	1.535	1.375	120-130	1.233	227.9	98.5,98.5
140	1.489	1.497	1.543	1.552	1.475	1.555	1.592	1.455	130-140	1.137	229.1	99,99
150	1.610	1.603	1.656	1.656	1.602	1.646	1.661	1.548	140-150	0.9834	230.0	99.4,99.4
160	1.715	1.705	1.763	1.755	1.724	1.734	1.728	1.660	150-160	0.7715	230.8	99.7,99.7
170	1.778	1.814	1.840	1.836	1.782	1.811	1.800	1.781	160-170	0.4994	231.3	99.9,99.9
180	1.822	1.863	1.872	1.862	1.822	1.864	1.872	1.862	170-180	0.1746	231.5	100,100
DEG	LUMINOUS INTENSITY:cd									UNIT:lm		

Conical surface Flux(90deg): 115.3 lm

%lum = 49.8%

%lamp = 49.8%

Conical surface Flux(130deg): 184.76 lm

%lum = 79.8%

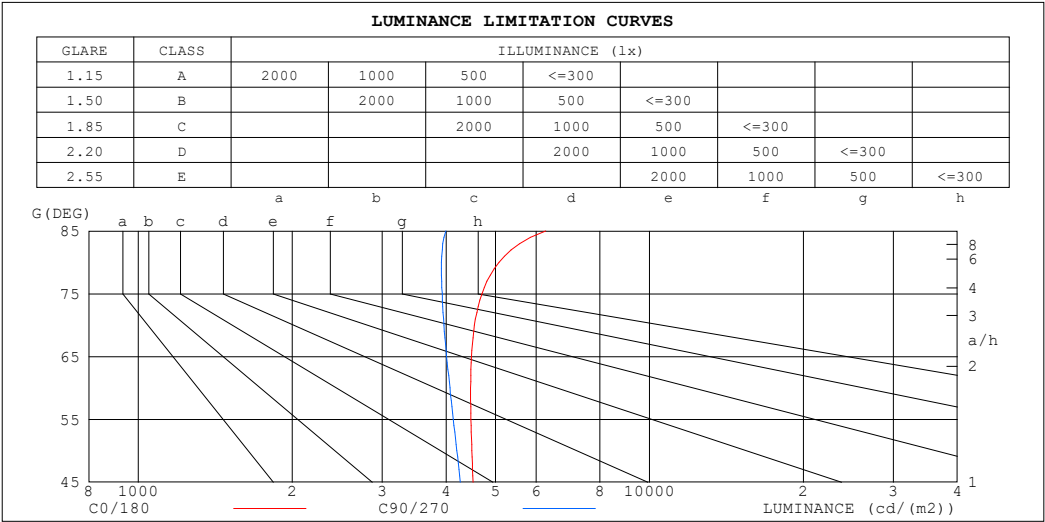
%lamp = 79.8%

C Range: 0 - 360DEG
 C Interval: 30.0DEG
 Test Speed: HIGH
 Temperature:25.3℃
 Operators:
 Test Date:2025-03-12

γ Range: 0 - 180DEG
 γ Interval: 1.0DEG
 Test System:EVERFINE GO-2000B_V1 SYSTEM V2.00.488
 Humidity:65.0%
 Test Distance:6.360m [K=1.0000]
 Remarks:

LUMINANCE LIMITATION CURVES

Test:U:24.00V I:0.2417A P:5.801W PF:1.000 Freq:0Hz Lamp Flux:231.48x1 lm		
NAME: SF16-24V-5050-70-DMX(3000K)-(1)	TYPE:	WEIGHT:
SPEC.:	DIM.: Length=1m	SERIAL No.:
MFR.: OLympia lighting	SUR.:	Shielding Angle:



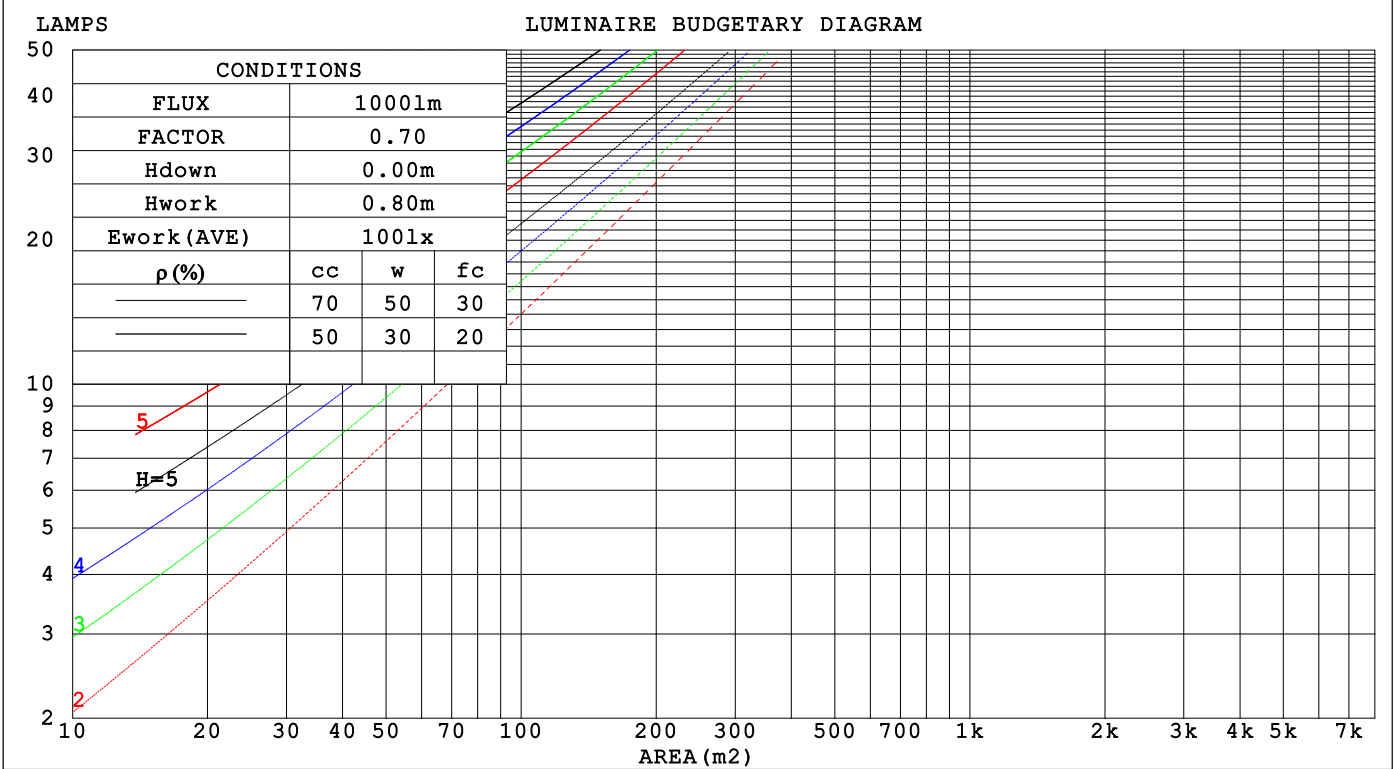
LUMINANCE cd/(m2)		
G (DEG)	C0/180	C90/270
85	6269	3995
80	5074	3916
75	4700	3931
70	4547	3960
65	4484	4011
60	4468	4069
55	4474	4132
50	4492	4199
45	4515	4265

C Range: 0 - 360DEG	γ Range: 0 - 180DEG
C Interval: 30.0DEG	γ Interval: 1.0DEG
Test Speed: HIGH	Test System:EVERFINE GO-2000B_V1 SYSTEM V2.00.488
Temperature:25.3℃	Humidity:65.0%
Operators:	Test Distance:6.360m [K=1.0000]
Test Date:2025-03-12	Remarks:

CU AND LUMINAIRE BUDGETARY ESTIMATE DIAGRAM

Test:U:24.00V I:0.2417A P:5.801W PF:1.000 Freq:0Hz Lamp Flux:231.48x1 lm		
NAME: SF16-24V-5050-70-DMX(3000K)-(1)	TYPE:	WEIGHT:
SPEC.:	DIM.: Length=1m	SERIAL No.:
MFR.: OLYMPIA lighting	SUR.:	Shielding Angle:

pcc	80%			70%			50%			30%			10%			0
p _w	50%	30%	10%	50%	30%	10%	50%	30%	10%	50%	30%	10%	50%	30%	10%	0
p _{fc}	20%			20%			20%			20%			20%			0
RCR	RCR:Room Cavity Ratio Coefficients of Utilization(CU)															
0.0	1.18	1.18	1.18	1.15	1.15	1.15	1.09	1.09	1.09	1.04	1.04	1.04	.99	.99	.99	.96
1.0	1.02	.98	.93	.99	.95	.92	.94	.91	.88	.90	.87	.85	.86	.83	.81	.79
2.0	.89	.81	.76	.86	.80	.74	.82	.77	.72	.78	.74	.70	.75	.71	.68	.65
3.0	.78	.69	.62	.76	.68	.62	.72	.66	.60	.69	.63	.59	.66	.61	.57	.55
4.0	.69	.60	.53	.67	.59	.52	.64	.57	.51	.61	.55	.50	.59	.53	.49	.46
5.0	.61	.52	.45	.60	.51	.45	.57	.50	.44	.55	.48	.43	.53	.47	.42	.40
6.0	.55	.46	.39	.54	.45	.39	.52	.44	.38	.50	.43	.38	.48	.42	.37	.35
7.0	.50	.41	.35	.49	.40	.35	.47	.39	.34	.45	.38	.33	.43	.38	.33	.31
8.0	.45	.37	.31	.45	.36	.31	.43	.36	.30	.41	.35	.30	.40	.34	.29	.28
9.0	.42	.33	.28	.41	.33	.28	.40	.32	.27	.38	.32	.27	.37	.31	.27	.25
10.0	.38	.30	.25	.38	.30	.25	.37	.30	.25	.35	.29	.24	.34	.28	.24	.22



C Range: 0 - 360DEG
C Interval: 30.0DEG
Test Speed: HIGH
Temperature:25.3℃
Operators:
Test Date:2025-03-12

γ Range: 0 - 180DEG
γ Interval: 1.0DEG
Test System:EVERFINE GO-2000B_V1 SYSTEM V2.00.488
Humidity:65.0%
Test Distance:6.360m [K=1.0000]
Remarks:

WEC AND CCEC

Test:U:24.00V I:0.2417A P:5.801W PF:1.000 Freq:0Hz Lamp Flux:231.48x1 lm		
NAME: SF16-24V-5050-70-DMX(3000K)-(1)	TYPE:	WEIGHT:
SPEC.:	DIM.: Length=1m	SERIAL No.:
MFR.: OLYMPIA lighting	SUR.:	Shielding Angle:

pcc	80%			70%			50%			30%			10%			0														
pw	50%	30%	10%	50%	30%	10%	50%	30%	10%	50%	30%	10%	50%	30%	10%	0														
pfc	20%			20%			20%			20%			20%			0														
RCR	RCR:Room Cavity Ratio															Wall Exitance Coefficients(WEC)														
0.0																														
1.0	.326	.186	.059	.318	.181	.058	.302	.174	.055	.288	.166	.053	.275	.159	.051															
2.0	.301	.165	.051	.294	.162	.050	.280	.156	.048	.267	.150	.047	.255	.144	.046															
3.0	.276	.147	.044	.269	.144	.043	.257	.139	.042	.246	.135	.041	.235	.130	.040															
4.0	.253	.131	.039	.247	.129	.038	.236	.125	.037	.226	.121	.037	.216	.118	.036															
5.0	.233	.119	.034	.228	.117	.034	.218	.113	.033	.209	.110	.033	.200	.107	.032															
6.0	.215	.108	.031	.211	.106	.031	.202	.103	.030	.194	.101	.030	.186	.098	.029															
7.0	.200	.099	.028	.196	.098	.028	.188	.095	.027	.180	.092	.027	.173	.090	.026															
8.0	.186	.091	.026	.183	.090	.025	.176	.088	.025	.169	.086	.025	.162	.083	.024															
9.0	.175	.084	.024	.171	.083	.023	.165	.081	.023	.159	.079	.023	.153	.078	.022															
10.0	.164	.079	.022	.161	.078	.022	.155	.076	.021	.149	.074	.021	.144	.072	.021															

pcc	80%			70%			50%			30%			10%			0
pw	50%	30%	10%	50%	30%	10%	50%	30%	10%	50%	30%	10%	50%	30%	10%	0
pfc	20%			20%			20%			20%			20%			0
RCR	RCR:Room Cavity Ratio						Ceiling Cavity Exitance Coefficients (CCEC)									
0.0	.219	.219	.219	.188	.188	.188	.128	.128	.128	.074	.074	.074	.024	.024	.024	
1.0	.211	.185	.162	.180	.159	.140	.123	.109	.097	.071	.063	.056	.023	.020	.018	
2.0	.203	.161	.126	.174	.139	.109	.119	.096	.076	.069	.056	.045	.022	.018	.015	
3.0	.195	.144	.103	.167	.124	.089	.115	.086	.063	.066	.050	.037	.021	.016	.012	
4.0	.187	.131	.087	.161	.113	.076	.111	.079	.053	.064	.046	.032	.021	.015	.010	
5.0	.180	.120	.077	.154	.104	.067	.106	.073	.047	.062	.043	.028	.020	.014	.009	
6.0	.173	.112	.069	.148	.097	.060	.102	.068	.042	.059	.040	.025	.019	.013	.008	
7.0	.166	.105	.063	.143	.091	.055	.099	.064	.039	.057	.038	.023	.018	.012	.008	
8.0	.159	.100	.059	.137	.086	.051	.095	.061	.036	.055	.036	.022	.018	.012	.007	
9.0	.153	.095	.055	.132	.082	.048	.091	.058	.034	.053	.034	.020	.017	.011	.007	
10.0	.147	.090	.052	.127	.078	.046	.088	.055	.033	.051	.033	.019	.017	.011	.006	

C Range: 0 - 360DEG
C Interval: 30.0DEG
Test Speed: HIGH
Temperature:25.3℃
Operators:
Test Date:2025-03-12

γ Range: 0 - 180DEG
γ Interval: 1.0DEG
Test System:EVERFINE GO-2000B_V1 SYSTEM V2.00.488
Humidity:65.0%
Test Distance:6.360m [K=1.0000]
Remarks:

UGR(Unified Glare Rating) Table

Test:U:24.00V I:0.2417A P:5.801W PF:1.000 Freq:0Hz Lamp Flux:231.48x1 lm											
NAME: SF16-24V-5050-70-DMX(3000K)-(1)						TYPE:		WEIGHT:			
SPEC.:						DIM.: Length=1m		SERIAL No.:			
MFR.: OLympia lighting						SUR.:		Shielding Angle:			
ceiling/cavity	0.7	0.7	0.5	0.5	0.3	0.7	0.7	0.5	0.5	0.3	
walls	0.5	0.3	0.5	0.3	0.3	0.5	0.3	0.5	0.3	0.3	
working plane	0.2	0.2	0.2	0.2	0.2	0.2	0.2	0.2	0.2	0.2	
Room dimensions		Viewed crosswise					Viewed endwise				
x = 2H y = 2H	2H	23.0	24.5	23.4	24.8	25.1	22.7	24.2	23.0	24.5	24.7
	3H	24.9	26.2	25.2	26.5	26.9	24.4	25.7	24.7	26.0	26.4
	4H	25.7	27.0	26.1	27.3	27.7	25.1	26.4	25.5	26.7	27.1
	6H	26.5	27.7	26.9	28.1	28.4	25.7	26.9	26.1	27.3	27.6
	8H	26.8	28.0	27.2	28.4	28.7	25.9	27.1	26.3	27.5	27.9
	12H	27.1	28.3	27.5	28.6	29.0	26.1	27.3	26.5	27.6	28.0
4H	2H	23.7	25.0	24.1	25.3	25.6	23.4	24.7	23.8	25.0	25.4
	3H	25.7	26.9	26.1	27.2	27.6	25.3	26.4	25.7	26.8	27.2
	4H	26.7	27.8	27.1	28.2	28.6	26.2	27.2	26.6	27.6	28.0
	6H	27.6	28.6	28.1	29.0	29.5	26.9	27.9	27.4	28.3	28.7
	8H	28.1	28.9	28.5	29.4	29.8	27.3	28.1	27.7	28.6	29.0
	12H	28.5	29.3	29.0	29.7	30.2	27.5	28.3	28.0	28.8	29.2
8H	4H	27.1	27.9	27.5	28.4	28.8	26.6	27.5	27.1	27.9	28.4
	6H	28.2	28.9	28.7	29.4	29.9	27.6	28.3	28.1	28.8	29.3
	8H	28.8	29.4	29.3	29.9	30.4	28.0	28.7	28.5	29.2	29.7
	12H	29.3	29.9	29.9	30.4	31.0	28.4	28.9	28.9	29.5	30.0
12H	4H	27.1	27.9	27.6	28.3	28.8	26.7	27.5	27.1	27.9	28.4
	6H	28.3	29.0	28.8	29.5	30.0	27.7	28.4	28.2	28.9	29.4
	8H	28.9	29.5	29.5	30.0	30.6	28.2	28.8	28.8	29.3	29.9
Variations with the observer position at spacings(CIE Pub.117):											
S = 1.0H		+ 0.1 / - 0.1					+ 0.1 / - 0.2				
1.5H		+ 0.2 / - 0.3					+ 0.2 / - 0.3				
2.0H		+ 0.1 / - 0.3					+ 0.1 / - 0.4				

CIE Pub.117, 231.5 lm Total Lamp Luminous Flux Correct (8log(F/F0) = -5.1)
Area: 0.0165 m2

C Range: 0 - 360DEG
C Interval: 30.0DEG
Test Speed: HIGH
Temperature:25.3℃
Operators:
Test Date:2025-03-12

γ Range: 0 - 180DEG
γ Interval: 1.0DEG
Test System:EVERFINE GO-2000B_V1 SYSTEM V2.00.488
Humidity:65.0%
Test Distance:6.360m [K=1.0000]
Remarks:

UTILIZATION FACTORS TABLE

Test:U:24.00V I:0.2417A P:5.801W PF:1.000 Freq:0Hz Lamp Flux:231.48x1 lm		
NAME: SF16-24V-5050-70-DMX(3000K)-(1)	TYPE:	WEIGHT:
SPEC.:	DIM.: Length=1m	SERIAL No.:
MFR.: OLympia lighting	SUR.:	Shielding Angle:

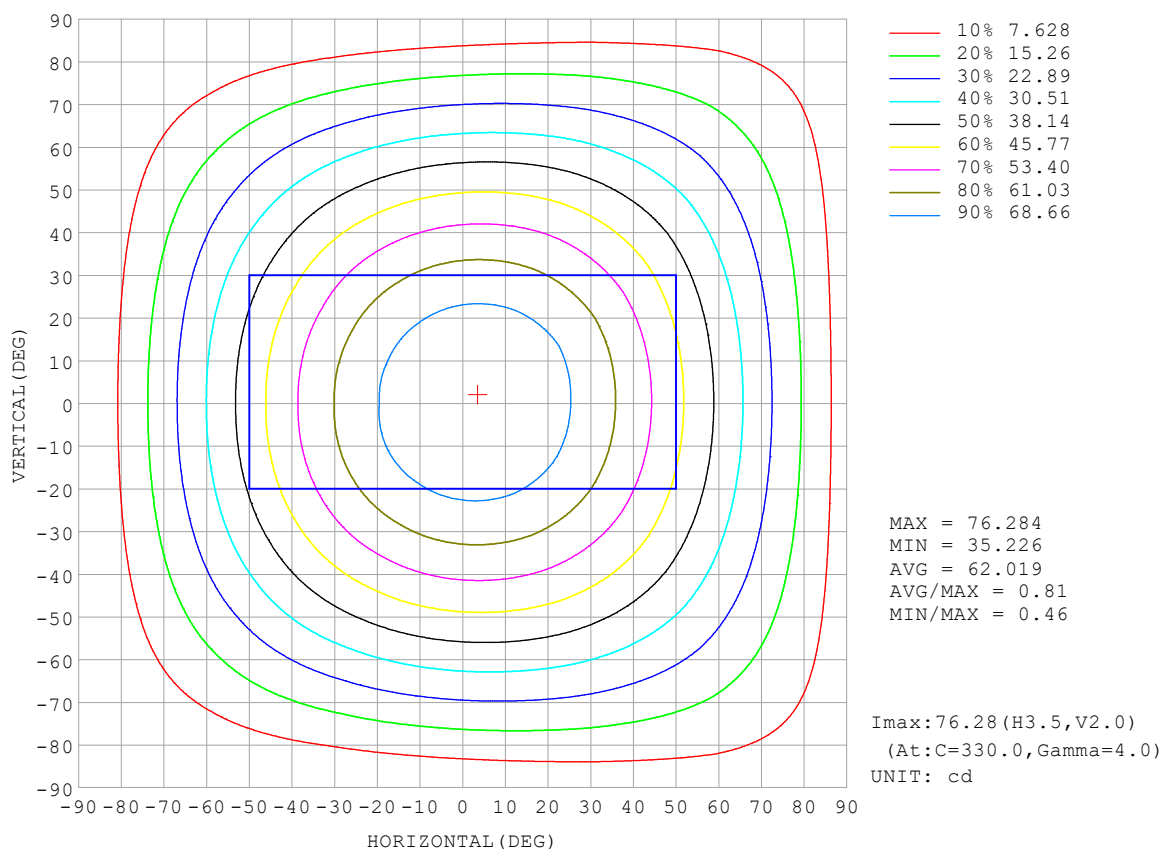
REFLECTANCE										
Ceiling	0.8	0.8	0.8	0.7	0.7	0.7	0.5	0.5	0.5	0
Walls	0.7	0.5	0.3	0.7	0.5	0.3	0.7	0.5	0.3	0
Working plane	0.2	0.2	0.2	0.2	0.2	0.2	0.2	0.2	0.2	0
ROOM INDEX	UTILIZATION FACTORS (PERCENT) $k(RI) \times RCR = 5$									
$k = 0.60$	56	44	37	55	44	37	53	43	37	30
0.80	65	54	46	64	53	46	62	52	45	38
1.00	74	62	55	72	62	54	70	63	54	46
1.25	81	70	62	79	69	62	76	67	61	53
1.50	86	75	68	84	74	68	80	72	66	58
2.00	93	84	77	91	82	76	87	80	74	65
2.50	97	89	82	94	87	81	90	84	79	69
3.00	100	93	87	98	91	86	93	88	83	73
4.00	104	98	93	102	96	92	97	92	88	78
5.00	107	102	97	104	99	95	99	95	92	81
ROOM INDEX	UF (total)									Direct
According to DIN EN 13032-2 2004			Suspended					SHRNOM = 1.25		

C Range: 0 - 360DEG
 C Interval: 30.0DEG
 Test Speed: HIGH
 Temperature: 25.3°C
 Operators:
 Test Date: 2025-03-12

γ Range: 0 - 180DEG
 γ Interval: 1.0DEG
 Test System: EVERFINE GO-2000B_V1 SYSTEM V2.00.488
 Humidity: 65.0%
 Test Distance: 6.360m [K=1.0000]
 Remarks:

ISOCANDELA DIAGRAM

Test:U:24.00V I:0.2417A P:5.801W PF:1.000 Freq:0Hz Lamp Flux:231.48x1 lm		
NAME: SF16-24V-5050-70-DMX(3000K)-(1)	TYPE:	WEIGHT:
SPEC.:	DIM.: Length=1m	SERIAL No.:
MFR.: OLympia lighting	SUR.:	Shielding Angle:

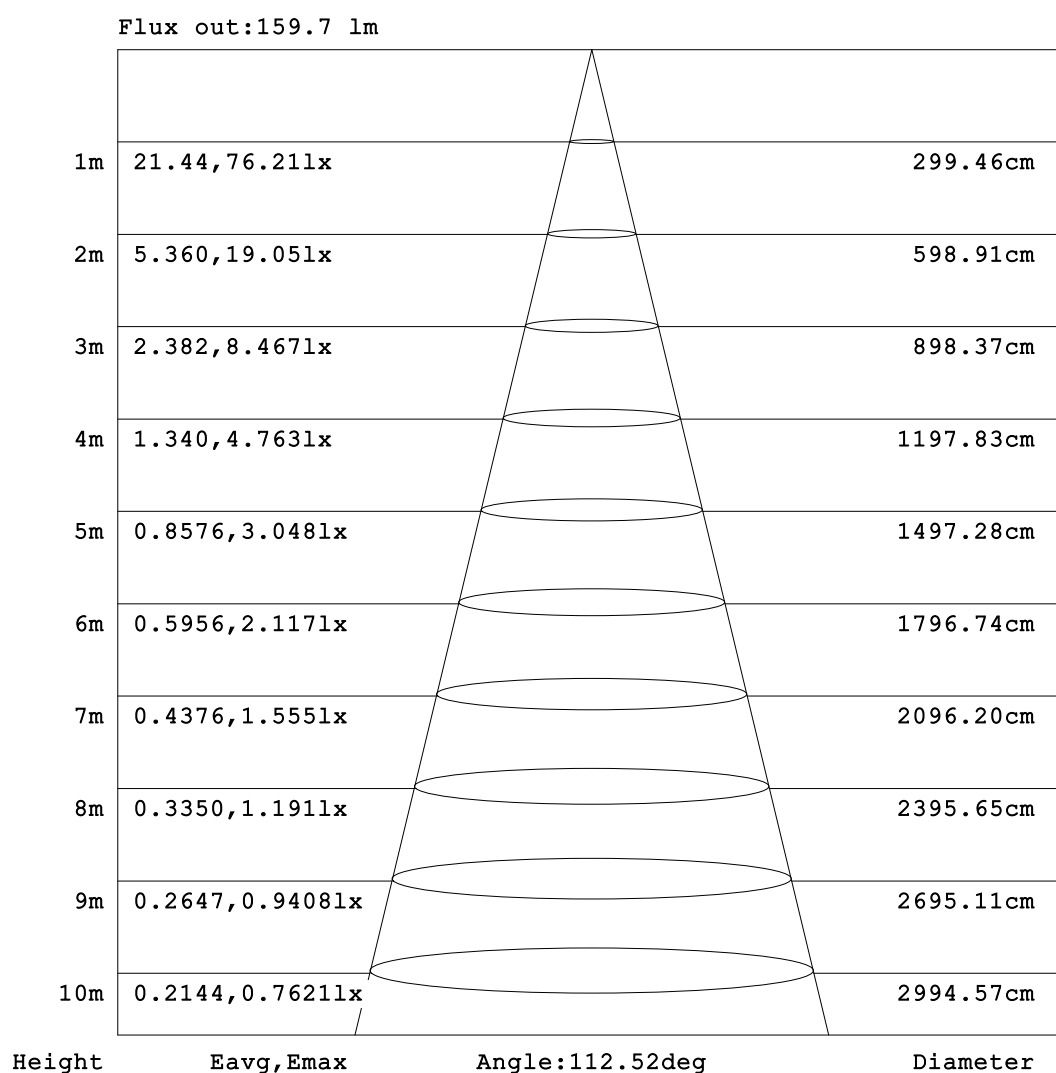


C Range: 0 - 360DEG
C Interval: 30.0DEG
Test Speed: HIGH
Temperature:25.3℃
Operators:
Test Date:2025-03-12

γ Range: 0 - 180DEG
γ Interval: 1.0DEG
Test System:EVERFINE GO-2000B_V1 SYSTEM V2.00.488
Humidity:65.0%
Test Distance:6.360m [K=1.0000]
Remarks:

AAI Figure

Test:U:24.00V I:0.2417A P:5.801W PF:1.000 Freq:0Hz Lamp Flux:231.48x1 lm		
NAME: SF16-24V-5050-70-DMX(3000K)-(1)	TYPE:	WEIGHT:
SPEC.:	DIM.: Length=1m	SERIAL No.:
MFR.: OLympia lighting	SUR.:	Shielding Angle:



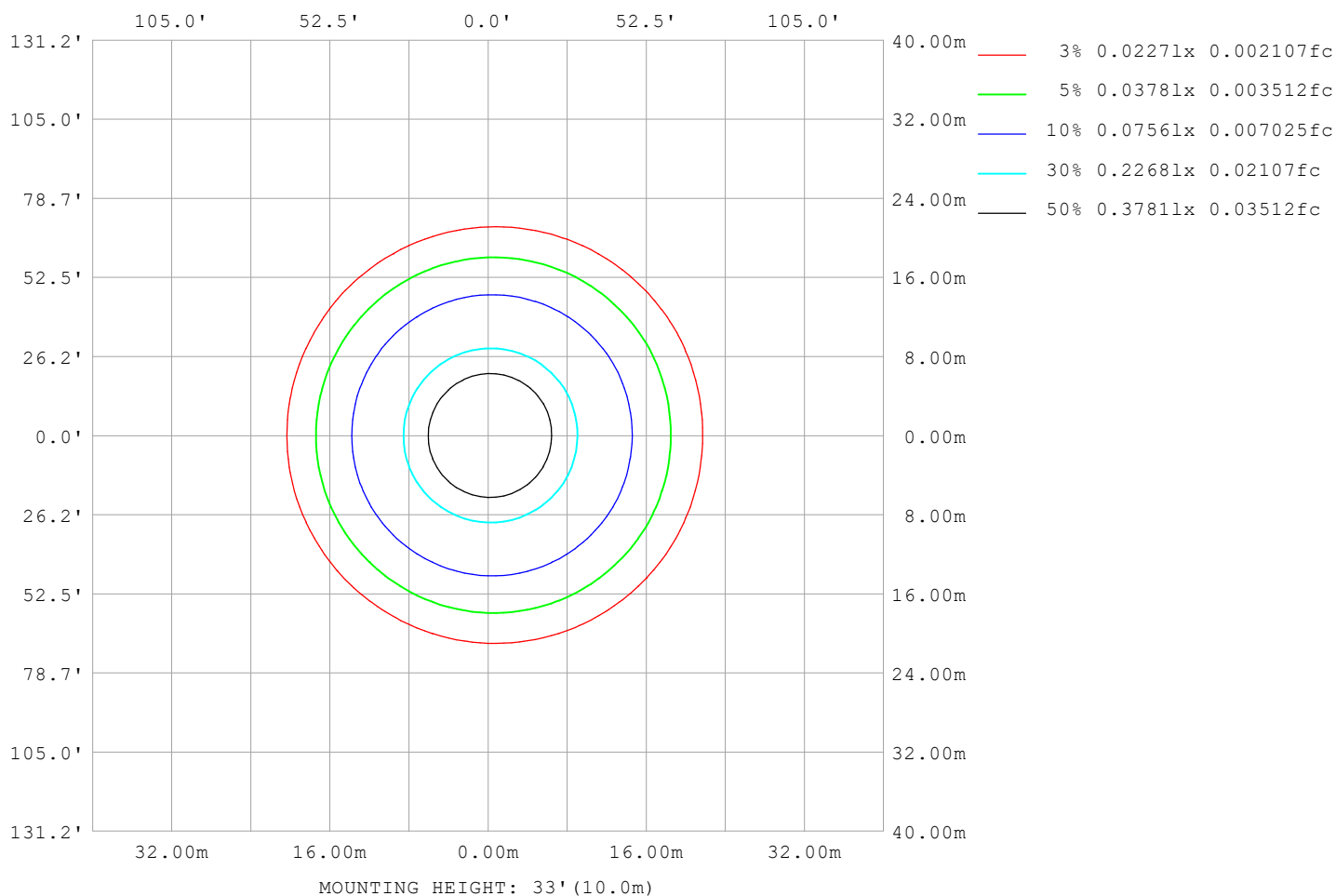
Note:The Curves indicate the illuminated area and the average illumination when the luminaire is at different distance.

C Range: 0 - 360DEG
C Interval: 30.0DEG
Test Speed: HIGH
Temperature:25.3℃
Operators:
Test Date:2025-03-12

γ Range: 0 - 180DEG
γ Interval: 1.0DEG
Test System:EVERFINE GO-2000B_V1 SYSTEM V2.00.488
Humidity:65.0%
Test Distance:6.360m [K=1.0000]
Remarks:

ISOLUX DIAGRAM

Test:U:24.00V I:0.2417A P:5.801W PF:1.000 Freq:0Hz Lamp Flux:231.48x1 lm		
NAME: SF16-24V-5050-70-DMX(3000K)-(1)	TYPE:	WEIGHT:
SPEC.:	DIM.: Length=1m	SERIAL No.:
MFR.: OLympia lighting	SUR.:	Shielding Angle:



C Range: 0 - 360DEG
C Interval: 30.0DEG
Test Speed: HIGH
Temperature:25.3℃
Operators:
Test Date:2025-03-12

γ Range: 0 - 180DEG
γ Interval: 1.0DEG
Test System:EVERFINE GO-2000B_V1 SYSTEM V2.00.488
Humidity:65.0%
Test Distance:6.360m [K=1.0000]
Remarks:

LED Avg.L Report

Test:U:24.00V I:0.2417A P:5.801W PF:1.000 Freq:0Hz Lamp Flux:231.48x1 lm		
NAME: SF16-24V-5050-70-DMX(3000K)-(1)	TYPE:	WEIGHT:
SPEC.:	DIM.: Length=1m	SERIAL No.:
MFR.: OLympia lighting	SUR.:	Shielding Angle:

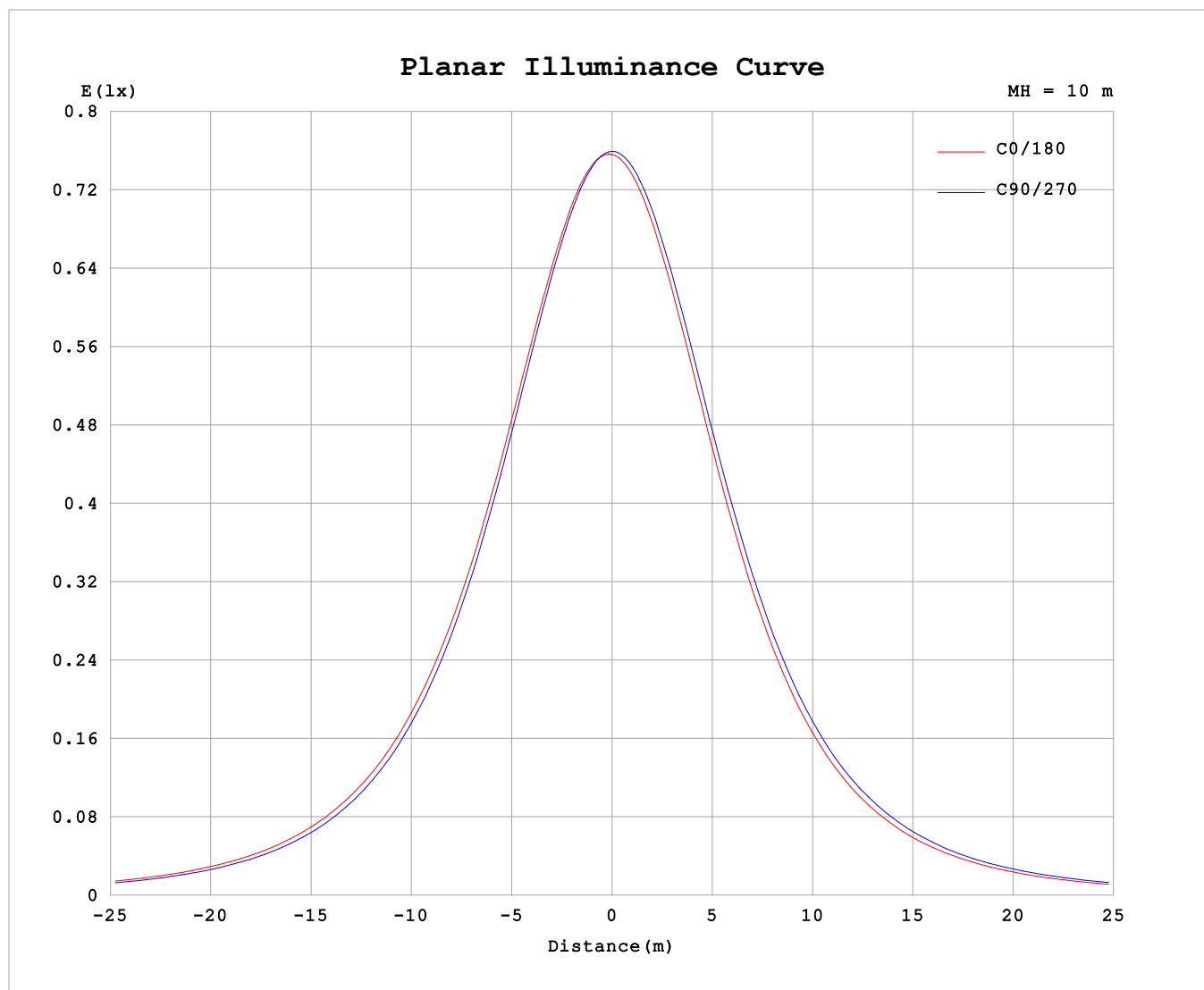
AvgL	cd/m2
L_0~180 (65) av	4050
L_0~180 (75) av	3992
L_0~180 (85) av	4575
L_90~270 (65) av	4044
L_90~270 (75) av	3982
L_90~270 (85) av	4151
L_45 (65) av	4054
L_45 (75) av	3996
L_45 (85) av	4346

Standard: GB/T 29293-2012

C Range: 0 - 360DEG
C Interval: 30.0DEG
Test Speed: HIGH
Temperature:25.3℃
Operators:
Test Date:2025-03-12

γ Range: 0 - 180DEG
γ Interval: 1.0DEG
Test System:EVERFINE GO-2000B_V1 SYSTEM V2.00.488
Humidity:65.0%
Test Distance:6.360m [K=1.0000]
Remarks:

Planar Illuminance Curve



C Range: 0 - 360DEG
C Interval: 30.0DEG
Test Speed: HIGH
Temperature: 25.3 °C
Operators:
Test Date: 2025-03-12

γ Range: 0 - 180DEG
 γ Interval: 1.0DEG
Test System: EVERFINE GO-2000B_V1 SYSTEM V2.00.488
Humidity: 65.0%
Test Distance: 6.360m [K=1.0000]
Remarks:

LUMINOUS DISTRIBUTION INTENSITY DATA

Test:U:24.00V I:0.2417A P:5.801W PF:1.000 Freq:0Hz Lamp Flux:231.48x1 lm		
NAME: SF16-24V-5050-70-DMX(3000K)-(1)	TYPE:	WEIGHT:
SPEC.:	DIM.: Length=1m	SERIAL No.:
MFR.: OLYMPIA lighting	SUR.:	Shielding Angle:

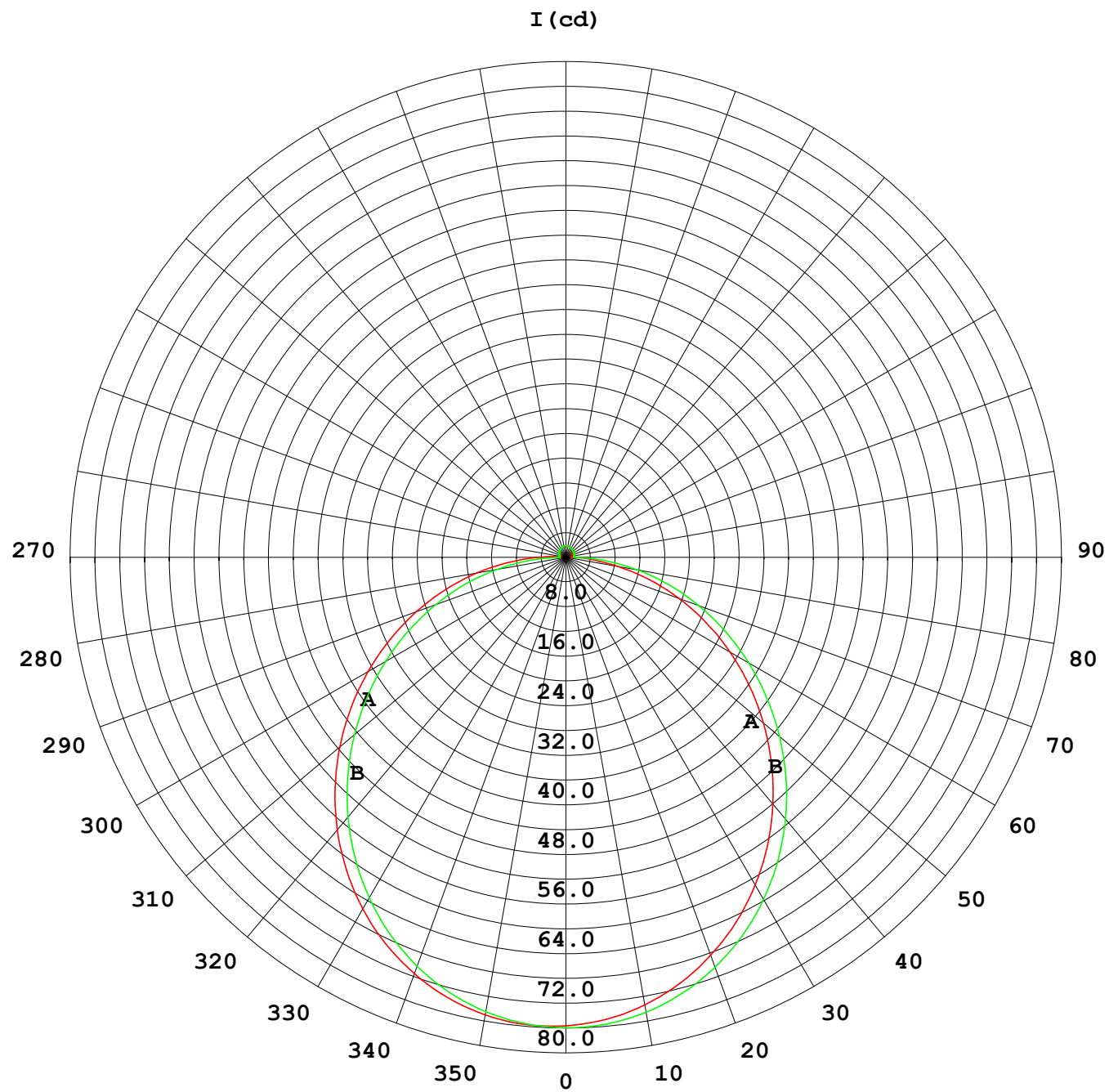
Table--1

UNIT: cd

C (DEG) γ (DEG)	0	30	60	90	120	150	180	210	240	270	300	330							
0	75.9	75.9	75.9	75.9	75.9	75.9	75.9	75.9	75.9	75.9	75.9	75.9							
5	76.0	75.9	75.8	75.5	75.3	75.1	75.1	75.1	75.3	75.6	75.7	76.0							
10	75.3	75.2	74.9	74.4	73.9	73.7	73.6	73.7	74.1	74.5	74.9	75.3							
15	73.9	73.8	73.3	72.7	71.9	71.5	71.4	71.6	72.1	72.8	73.4	73.9							
20	71.8	71.7	71.1	70.2	69.3	68.7	68.6	68.9	69.5	70.4	71.2	71.8							
25	69.1	68.9	68.2	67.1	66.1	65.4	65.2	65.5	66.3	67.4	68.4	69.1							
30	65.8	65.6	64.7	63.5	62.2	61.5	61.3	61.7	62.6	63.8	65.0	65.7							
35	61.9	61.7	60.7	59.3	57.9	57.1	57.0	57.3	58.4	59.7	61.0	61.9							
40	57.6	57.3	56.2	54.7	53.2	52.3	52.2	52.6	53.7	55.1	56.6	57.5							
45	52.9	52.6	51.3	49.7	48.2	47.2	47.1	47.5	48.7	50.2	51.8	52.8							
50	47.8	47.5	46.2	44.5	42.9	41.9	41.8	42.2	43.5	45.0	46.7	47.7							
55	42.5	42.2	40.8	39.1	37.4	36.4	36.3	36.7	38.0	39.6	41.4	42.4							
60	37.0	36.7	35.3	33.6	31.8	30.8	30.7	31.2	32.4	34.1	35.8	36.9							
65	31.4	31.1	29.7	28.0	26.2	25.2	25.1	25.5	26.8	28.5	30.2	31.3							
70	25.8	25.4	24.1	22.3	20.6	19.6	19.5	19.9	21.2	22.8	24.6	25.7							
75	20.1	19.8	18.5	16.8	15.0	14.1	14.0	14.4	15.7	17.2	19.0	20.1							
80	14.6	14.3	12.9	11.2	9.51	8.58	8.49	8.90	10.1	11.7	13.4	14.5							
85	9.05	8.72	7.38	5.74	4.15	3.99	4.11	4.20	4.69	6.20	7.92	8.97							
90	4.60	4.07	2.55	1.07	1.31	1.59	1.67	1.67	1.52	1.31	3.00	4.34							
95	1.56	1.16	0.96	1.10	1.09	1.08	0.91	1.05	1.24	1.29	1.20	1.43							
100	0.98	0.96	1.01	1.13	1.13	1.12	0.96	1.08	1.29	1.34	1.23	1.02							
105	1.03	1.09	1.11	1.18	1.19	1.19	1.02	1.14	1.34	1.39	1.28	1.03							
110	1.10	1.17	1.19	1.23	1.24	1.25	1.08	1.20	1.38	1.42	1.32	1.08							
115	1.16	1.23	1.25	1.29	1.29	1.30	1.14	1.25	1.42	1.47	1.36	1.14							
120	1.23	1.29	1.30	1.35	1.34	1.36	1.21	1.30	1.46	1.49	1.39	1.20							
125	1.30	1.34	1.35	1.40	1.39	1.42	1.28	1.35	1.49	1.51	1.42	1.24							
130	1.36	1.40	1.40	1.45	1.44	1.46	1.34	1.40	1.53	1.53	1.45	1.30							
135	1.43	1.44	1.45	1.49	1.49	1.52	1.41	1.46	1.57	1.56	1.49	1.32							
140	1.49	1.49	1.50	1.54	1.54	1.56	1.47	1.50	1.61	1.59	1.53	1.38							
145	1.54	1.54	1.55	1.60	1.59	1.62	1.54	1.56	1.65	1.62	1.57	1.44							
150	1.61	1.60	1.61	1.66	1.64	1.67	1.60	1.61	1.68	1.66	1.60	1.49							
155	1.66	1.65	1.66	1.71	1.69	1.73	1.66	1.66	1.72	1.70	1.66	1.55							
160	1.71	1.70	1.71	1.76	1.74	1.77	1.72	1.71	1.76	1.73	1.71	1.61							
165	1.76	1.75	1.76	1.80	1.78	1.81	1.77	1.75	1.80	1.77	1.75	1.68							
170	1.78	1.82	1.80	1.84	1.82	1.85	1.78	1.80	1.82	1.80	1.79	1.77							
175	1.80	1.85	1.84	1.87	1.85	1.86	1.82	1.84	1.86	1.84	1.85	1.81							
180	1.82	1.86	1.87	1.87	1.86	1.86	1.82	1.86	1.87	1.87	1.87	1.85							

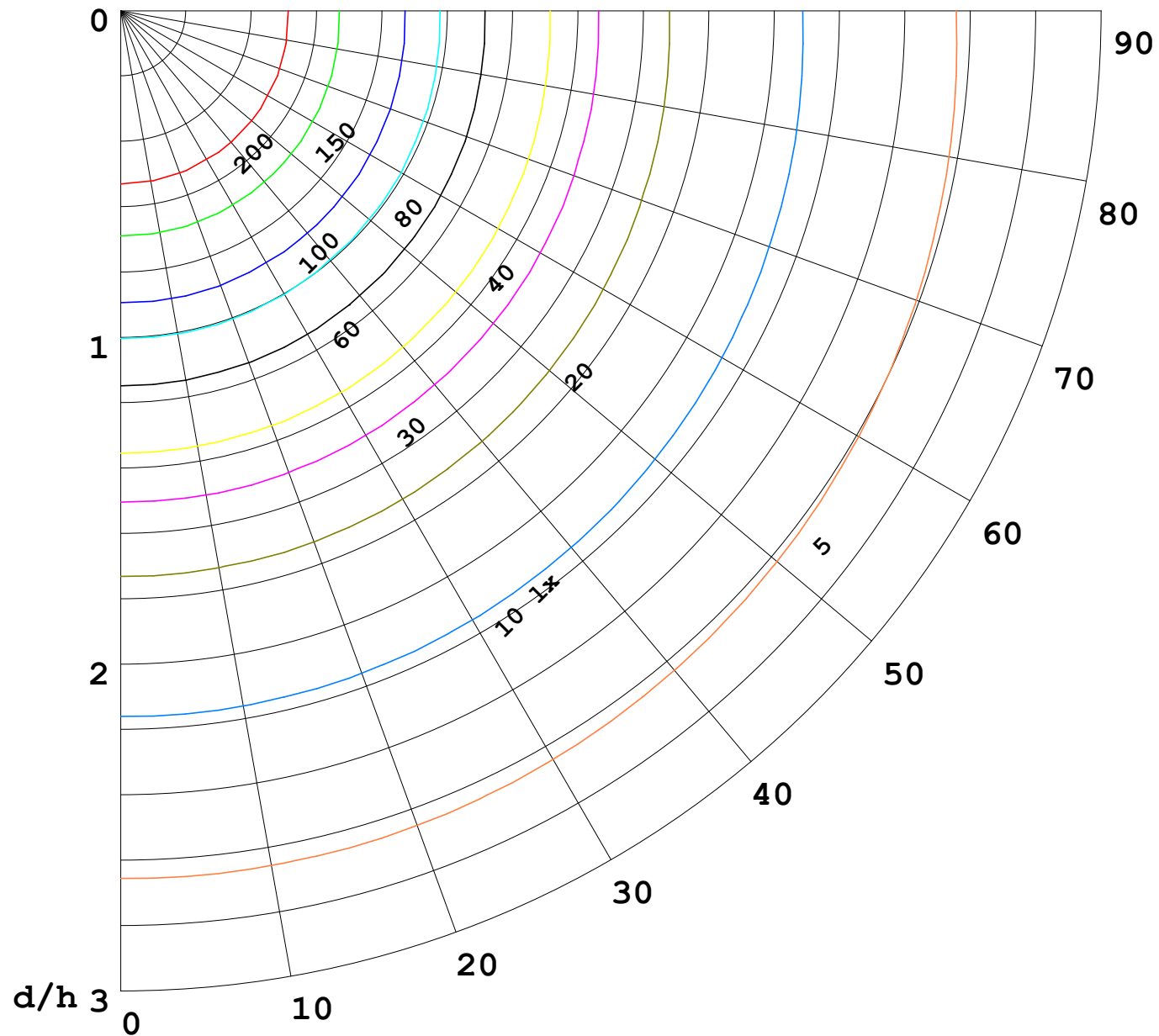
C Range: 0 - 360DEG
C Interval: 30.0DEG
Test Speed: HIGH
Temperature:25.3℃
Operators:
Test Date:2025-03-12

γ Range: 0 - 180DEG
γ Interval: 1.0DEG
Test System:EVERFINE GO-2000B_V1 SYSTEM V2.00.488
Humidity:65.0%
Test Distance:6.360m [K=1.0000]
Remarks:



1000 lm

$\kappa = 1$



F = 1000 lm
 K = 0.7
 Hcc = 0.8 m
 Hfc = 0.0 m
 Eave = 100 lx

	Pcc	Pw	Pfc
—————	70	50	30
—————	50	30	20

