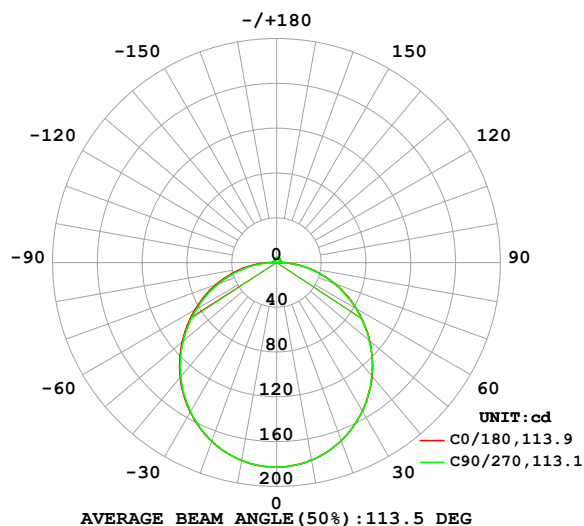


## LUMINAIRE PHOTOMETRIC TEST REPORT

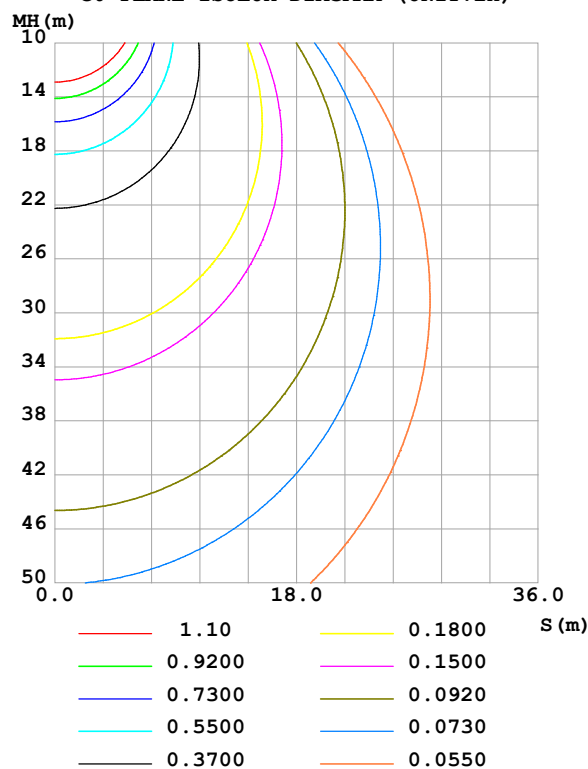
Test:U:24.00V I:0.4176A P:10.02W PF:1.000 Freq:0Hz Lamp Flux:563.893x1 lm		
NAME: SF16-24V-3528-144-3000-80	TYPE:	WEIGHT:
SPEC.:	DIM.: Length=1m	SERIAL No.:
MFR.:	SUR.:	Shielding Angle:

DATA OF LAMP		PHOTOMETRIC DATA				Eff: 56.26 lm/W
MODEL		I <sub>max</sub> (cd)	182.7	S/MH(C0/180)	1.26	
NOMINAL POWER(W)		LOR(%)	100.0	S/MH(C90/270)	1.25	
RATED VOLTAGE(V)		TOTAL FLUX(lm)	563.89	η UP,DN(C0-180)	1.9,48.0	
NOMINAL FLUX(lm)	563.893	CIE CLASS	DIRECT	η UP,DN(C180-360)	1.9,48.2	
LAMPS INSIDE	1	η up (%)	3.8	CIBSE SHR NOM	1.25	
TEST VOLTAGE(V)		η down (%)	96.2	CIBSE SHR MAX	1.35	

LUMINOUS INTENSITY DISTRIBUTION DIAGRAM



C0 PLANE ISOLUX DIAGRAM (UNIT:lx)



C Range: 0 - 360DEG  
C Interval: 22.5DEG  
Test Speed: HIGH  
Temperature:25.3℃  
Operators:Cloud  
Test Date:2024-10-28

γ Range: 0 - 180DEG  
γ Interval: 1.0DEG  
Test System:EVERFINE GO-2000B\_V1 SYSTEM V2.00.488  
Humidity:65.0%  
Test Distance:6.360m [K=1.0000]  
Remarks:

## ZONAL FLUX DIAGRAM

## ZONAL FLUX DIAGRAM:

$\gamma$	C0	C45	C90	C135	C180	C225	C270	C315	$\gamma$	$\Phi$ zone	$\Phi$ total	%lum, lamp
10	179.1	179.3	179.3	179.4	179.5	179.6	179.4	179.4	0- 10	17.28	17.28	3.06,3.06
20	169.1	169.2	169.2	169.7	169.8	170.0	169.6	169.5	10- 20	49.45	66.73	11.8,11.8
30	153.3	153.2	153.3	154.1	154.3	154.6	153.8	153.7	20- 30	74.81	141.5	25.1,25.1
40	132.6	132.4	132.4	133.6	134.0	134.2	133.2	133.0	30- 40	90.10	231.6	41.1,41.1
50	108.5	108.3	108.1	109.6	110.1	110.2	108.8	108.8	40- 50	93.73	325.4	57.7,57.7
60	82.30	81.98	81.82	83.55	84.22	84.17	82.40	82.58	50- 60	85.98	411.3	72.9,72.9
70	55.38	55.08	54.82	56.74	57.54	57.17	55.02	55.47	60- 70	68.75	480.1	85.1,85.1
80	28.65	28.30	27.85	30.07	30.99	30.18	27.60	28.39	70- 80	44.82	524.9	93.1,93.1
90	6.131	5.152	2.636	5.830	7.075	5.726	2.444	5.213	80- 90	17.57	542.5	96.2,96.2
100	3.785	3.301	2.574	2.849	3.201	2.893	2.502	3.240	90-100	3.758	546.2	96.9,96.9
110	3.492	3.136	2.860	2.877	2.750	2.900	2.782	2.769	100-110	3.104	549.4	97.4,97.4
120	3.371	3.110	3.143	3.180	2.920	3.119	3.074	3.074	110-120	2.966	552.3	97.9,97.9
130	3.514	3.352	3.417	3.481	3.207	3.364	3.357	3.328	120-130	2.892	555.2	98.5,98.5
140	3.773	3.623	3.680	3.776	3.515	3.650	3.655	3.629	130-140	2.724	557.9	98.9,98.9
150	4.023	3.889	4.046	4.077	3.851	3.947	3.952	3.927	140-150	2.388	560.3	99.4,99.4
160	4.288	4.287	4.330	4.363	4.168	4.244	4.256	4.216	150-160	1.898	562.2	99.7,99.7
170	4.389	4.509	4.559	4.554	4.323	4.504	4.522	4.488	160-170	1.240	563.5	99.9,99.9
180	4.472	4.625	4.666	4.641	4.478	4.630	4.669	4.652	170-180	0.4345	563.9	100,100
DEG	LUMINOUS INTENSITY:cd									UNIT:lm		

Conical surface Flux(90deg): 278.78 lm

%lum = 49.4%

%lamp = 49.4%

Conical surface Flux(130deg): 448.36 lm

%lum = 79.5%

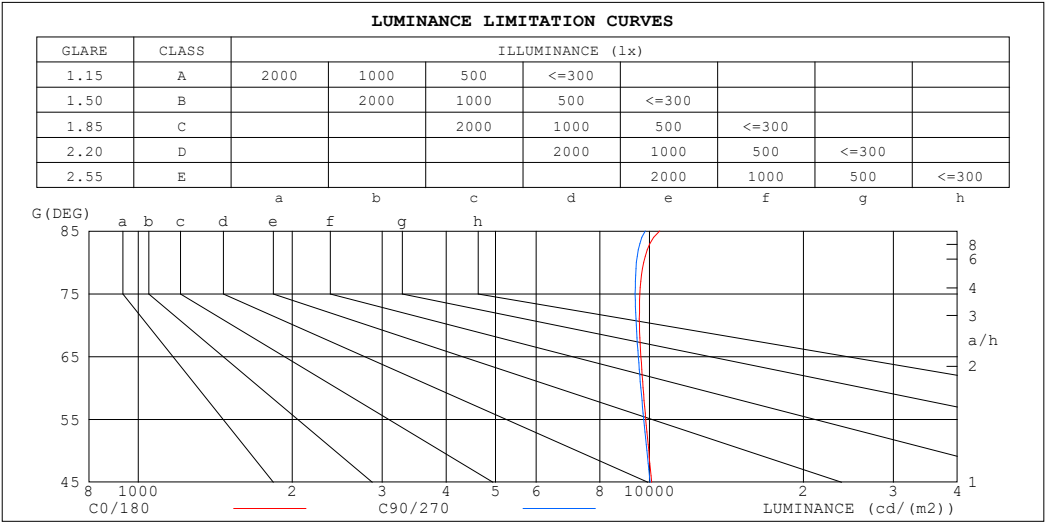
%lamp = 79.5%

C Range: 0 - 360DEG  
 C Interval: 22.5DEG  
 Test Speed: HIGH  
 Temperature:25.3℃  
 Operators:Cloud  
 Test Date:2024-10-28

$\gamma$  Range: 0 - 180DEG  
 $\gamma$  Interval: 1.0DEG  
 Test System:EVERFINE GO-2000B\_V1 SYSTEM V2.00.488  
 Humidity:65.0%  
 Test Distance:6.360m [K=1.0000]  
 Remarks:

LUMINANCE LIMITATION CURVES

Test:U:24.00V I:0.4176A P:10.02W PF:1.000 Freq:0Hz Lamp Flux:563.893x1 lm		
NAME: SF16-24V-3528-144-3000-80	TYPE:	WEIGHT:
SPEC.:	DIM.: Length=1m	SERIAL No.:
MFR.:	SUR.:	Shielding Angle:



LUMINANCE cd/(m2)		
G (DEG)	C0/180	C90/270
85	10476	9812
80	9740	9426
75	9569	9375
70	9557	9419
65	9622	9509
60	9717	9617
55	9834	9747
50	9964	9887
45	10094	10023

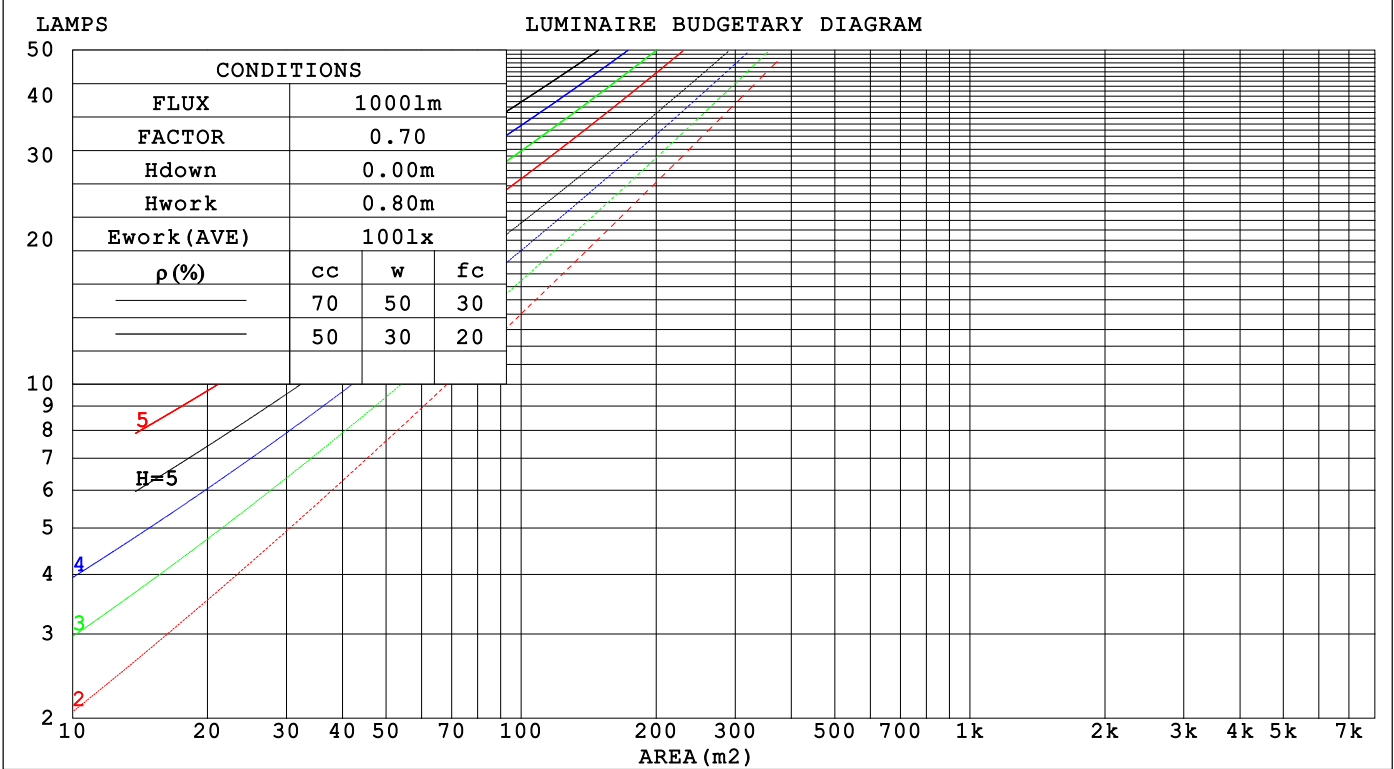
C Range: 0 - 360DEG  
C Interval: 22.5DEG  
Test Speed: HIGH  
Temperature:25.3℃  
Operators:Cloud  
Test Date:2024-10-28

γ Range: 0 - 180DEG  
γ Interval: 1.0DEG  
Test System:EVERFINE GO-2000B\_V1 SYSTEM V2.00.488  
Humidity:65.0%  
Test Distance:6.360m [K=1.0000]  
Remarks:

CU AND LUMINAIRE BUDGETARY ESTIMATE DIAGRAM

Test:U:24.00V I:0.4176A P:10.02W PF:1.000 Freq:0Hz		
Lamp Flux:563.893x1 lm		
NAME: SF16-24V-3528-144-3000-80	TYPE:	WEIGHT:
SPEC.:	DIM.: Length=1m	SERIAL No.:
MFR.:	SUR.:	Shielding Angle:

pcc	80%			70%			50%			30%			10%			0
p <sub>w</sub>	50%	30%	10%	50%	30%	10%	50%	30%	10%	50%	30%	10%	50%	30%	10%	0
p <sub>fc</sub>	20%			20%			20%			20%			20%			0
RCR	RCR:Room Cavity Ratio                      Coefficients of Utilization(CU)															
0.0	1.18	1.18	1.18	1.15	1.15	1.15	1.09	1.09	1.09	1.04	1.04	1.04	.99	.99	.99	.96
1.0	1.02	.97	.93	.99	.95	.91	.94	.91	.88	.90	.87	.84	.86	.83	.81	.79
2.0	.88	.81	.75	.86	.80	.74	.82	.77	.72	.78	.74	.70	.75	.71	.67	.65
3.0	.77	.69	.62	.75	.68	.61	.72	.65	.60	.69	.63	.58	.66	.61	.57	.54
4.0	.68	.59	.52	.67	.58	.52	.64	.57	.51	.61	.55	.50	.58	.53	.49	.46
5.0	.61	.52	.45	.60	.51	.45	.57	.50	.44	.55	.48	.43	.52	.47	.42	.40
6.0	.55	.46	.39	.54	.45	.39	.51	.44	.38	.49	.43	.38	.47	.42	.37	.35
7.0	.50	.41	.35	.49	.40	.34	.47	.39	.34	.45	.38	.33	.43	.37	.33	.31
8.0	.45	.37	.31	.44	.36	.31	.43	.35	.30	.41	.35	.30	.40	.34	.29	.27
9.0	.42	.33	.28	.41	.33	.27	.39	.32	.27	.38	.31	.27	.37	.31	.26	.25
10.0	.38	.30	.25	.38	.30	.25	.36	.29	.25	.35	.29	.24	.34	.28	.24	.22



C Range: 0 - 360DEG

C Interval: 22.5DEG

Test Speed: HIGH

Temperature:25.3℃

Operators:Cloud

Test Date:2024-10-28

γ Range: 0 - 180DEG

γ Interval: 1.0DEG

Test System:EVERFINE GO-2000B\_V1 SYSTEM V2.00.488

Humidity:65.0%

Test Distance:6.360m [K=1.0000]

Remarks:

## WEC AND CCEC

Test:U:24.00V I:0.4176A P:10.02W PF:1.000 Freq:0Hz Lamp Flux:563.893x1 lm		
NAME: SF16-24V-3528-144-3000-80	TYPE:	WEIGHT:
SPEC.:	DIM.: Length=1m	SERIAL No.:
MFR.:	SUR.:	Shielding Angle:

pcc	80%			70%			50%			30%			10%			0														
pw	50%	30%	10%	50%	30%	10%	50%	30%	10%	50%	30%	10%	50%	30%	10%	0														
pfc	20%			20%			20%			20%			20%			0														
RCR	RCR:Room Cavity Ratio															Wall Exitance Coefficients(WEC)														
0.0																														
1.0	.328	.187	.059	.320	.183	.058	.304	.175	.056	.290	.167	.054	.277	.161	.052															
2.0	.302	.166	.051	.295	.163	.050	.281	.156	.049	.269	.151	.047	.257	.145	.046															
3.0	.277	.147	.044	.270	.145	.044	.258	.140	.042	.247	.135	.041	.236	.131	.040															
4.0	.254	.132	.039	.248	.130	.038	.237	.126	.038	.227	.122	.037	.217	.118	.036															
5.0	.234	.119	.034	.228	.117	.034	.219	.114	.033	.209	.110	.033	.201	.107	.032															
6.0	.216	.108	.031	.211	.107	.031	.202	.104	.030	.194	.101	.030	.186	.098	.029															
7.0	.200	.099	.028	.196	.098	.028	.188	.095	.027	.181	.093	.027	.174	.090	.027															
8.0	.187	.091	.026	.183	.090	.025	.176	.088	.025	.169	.086	.025	.163	.084	.024															
9.0	.175	.085	.024	.171	.084	.023	.165	.082	.023	.159	.080	.023	.153	.078	.022															
10.0	.164	.079	.022	.161	.078	.022	.155	.076	.021	.150	.074	.021	.144	.073	.021															

pcc	80%			70%			50%			30%			10%			0
pw	50%	30%	10%	50%	30%	10%	50%	30%	10%	50%	30%	10%	50%	30%	10%	0
pfc	20%			20%			20%			20%			20%			0
RCR	RCR:Room Cavity Ratio						Ceiling Cavity Exitance Coefficients (CCEC)									
0.0	.219	.219	.219	.188	.188	.188	.128	.128	.128	.074	.074	.074	.024	.024	.024	
1.0	.211	.185	.162	.180	.159	.139	.123	.109	.096	.071	.063	.056	.023	.020	.018	
2.0	.203	.161	.126	.174	.139	.109	.119	.096	.076	.069	.056	.045	.022	.018	.015	
3.0	.195	.144	.103	.167	.124	.089	.115	.086	.063	.066	.050	.037	.021	.016	.012	
4.0	.188	.131	.087	.161	.113	.076	.111	.079	.053	.064	.046	.032	.021	.015	.010	
5.0	.180	.120	.076	.155	.104	.066	.107	.073	.047	.062	.043	.028	.020	.014	.009	
6.0	.173	.112	.069	.149	.097	.060	.102	.068	.042	.059	.040	.025	.019	.013	.008	
7.0	.166	.105	.063	.143	.091	.055	.099	.064	.039	.057	.038	.023	.019	.012	.008	
8.0	.159	.100	.059	.137	.086	.051	.095	.061	.036	.055	.036	.022	.018	.012	.007	
9.0	.153	.095	.055	.132	.082	.048	.091	.058	.034	.053	.034	.020	.017	.011	.007	
10.0	.148	.090	.052	.127	.079	.046	.088	.055	.032	.051	.033	.019	.017	.011	.006	

C Range: 0 - 360DEG  
C Interval: 22.5DEG  
Test Speed: HIGH  
Temperature:25.3℃  
Operators:Cloud  
Test Date:2024-10-28

γ Range: 0 - 180DEG  
γ Interval: 1.0DEG  
Test System:EVERFINE GO-2000B\_V1 SYSTEM V2.00.488  
Humidity:65.0%  
Test Distance:6.360m [K=1.0000]  
Remarks:

UGR(Unified Glare Rating) Table

Test:U:24.00V I:0.4176A P:10.02W PF:1.000 Freq:0Hz Lamp Flux:563.893x1 lm										
NAME: SF16-24V-3528-144-3000-80					TYPE:			WEIGHT:		
SPEC.:					DIM.: Length=1m			SERIAL No.:		
MFR.:					SUR.:			Shielding Angle:		
ceiling/cavity	0.7	0.7	0.5	0.5	0.3	0.7	0.7	0.5	0.5	0.3
walls	0.5	0.3	0.5	0.3	0.3	0.5	0.3	0.5	0.3	0.3
working plane	0.2	0.2	0.2	0.2	0.2	0.2	0.2	0.2	0.2	0.2
Room dimensions	Viewed crosswise					Viewed endwise				
x = 2H y = 2H	22.5	24.0	22.9	24.3	24.6	22.5	24.0	22.8	24.3	24.6
3H	24.3	25.6	24.6	25.9	26.3	24.2	25.6	24.6	25.9	26.2
4H	25.0	26.3	25.4	26.7	27.0	24.9	26.3	25.3	26.6	26.9
6H	25.7	26.9	26.1	27.2	27.6	25.6	26.8	26.0	27.2	27.5
8H	25.9	27.1	26.3	27.5	27.8	25.8	27.0	26.2	27.4	27.7
12H	26.1	27.3	26.5	27.6	28.0	26.0	27.2	26.4	27.5	27.9
4H 2H	23.2	24.5	23.6	24.8	25.2	23.1	24.5	23.5	24.8	25.1
3H	25.1	26.2	25.5	26.6	27.0	25.0	26.2	25.5	26.6	26.9
4H	26.0	27.0	26.4	27.4	27.9	25.9	27.0	26.4	27.4	27.8
6H	26.8	27.7	27.3	28.2	28.6	26.7	27.7	27.2	28.1	28.5
8H	27.1	28.0	27.6	28.4	28.9	27.0	27.9	27.5	28.3	28.8
12H	27.4	28.2	27.9	28.7	29.2	27.3	28.1	27.8	28.6	29.0
8H 4H	26.3	27.2	26.8	27.6	28.1	26.3	27.2	26.8	27.6	28.1
6H	27.3	28.1	27.8	28.5	29.0	27.2	28.0	27.8	28.5	29.0
8H	27.8	28.4	28.3	28.9	29.5	27.7	28.3	28.2	28.8	29.4
12H	28.2	28.7	28.7	29.3	29.8	28.1	28.6	28.6	29.1	29.7
12H 4H	26.4	27.2	26.8	27.6	28.1	26.3	27.1	26.8	27.6	28.1
6H	27.4	28.1	27.9	28.6	29.1	27.4	28.0	27.9	28.5	29.0
8H	27.9	28.5	28.5	29.0	29.6	27.8	28.4	28.4	28.9	29.5
Variations with the observer position at spacings(CIE Pub.117):										
S = 1.0H	+ 0.1 / - 0.2					+ 0.1 / - 0.2				
1.5H	+ 0.2 / - 0.3					+ 0.2 / - 0.3				
2.0H	+ 0.1 / - 0.3					+ 0.1 / - 0.3				

CIE Pub.117, 563.9 lm Total Lamp Luminous Flux Correct (8log(F/F0) = -2.0)  
Area: 0.017 m2

C Range: 0 - 360DEG  
C Interval: 22.5DEG  
Test Speed: HIGH  
Temperature:25.3℃  
Operators:Cloud  
Test Date:2024-10-28

γ Range: 0 - 180DEG  
γ Interval: 1.0DEG  
Test System:EVERFINE GO-2000B\_V1 SYSTEM V2.00.488  
Humidity:65.0%  
Test Distance:6.360m [K=1.0000]  
Remarks:

## UTILIZATION FACTORS TABLE

Test:U:24.00V I:0.4176A P:10.02W PF:1.000 Freq:0Hz Lamp Flux:563.893x1 lm		
NAME: SF16-24V-3528-144-3000-80	TYPE:	WEIGHT:
SPEC.:	DIM.: Length=1m	SERIAL No.:
MFR.:	SUR.:	Shielding Angle:

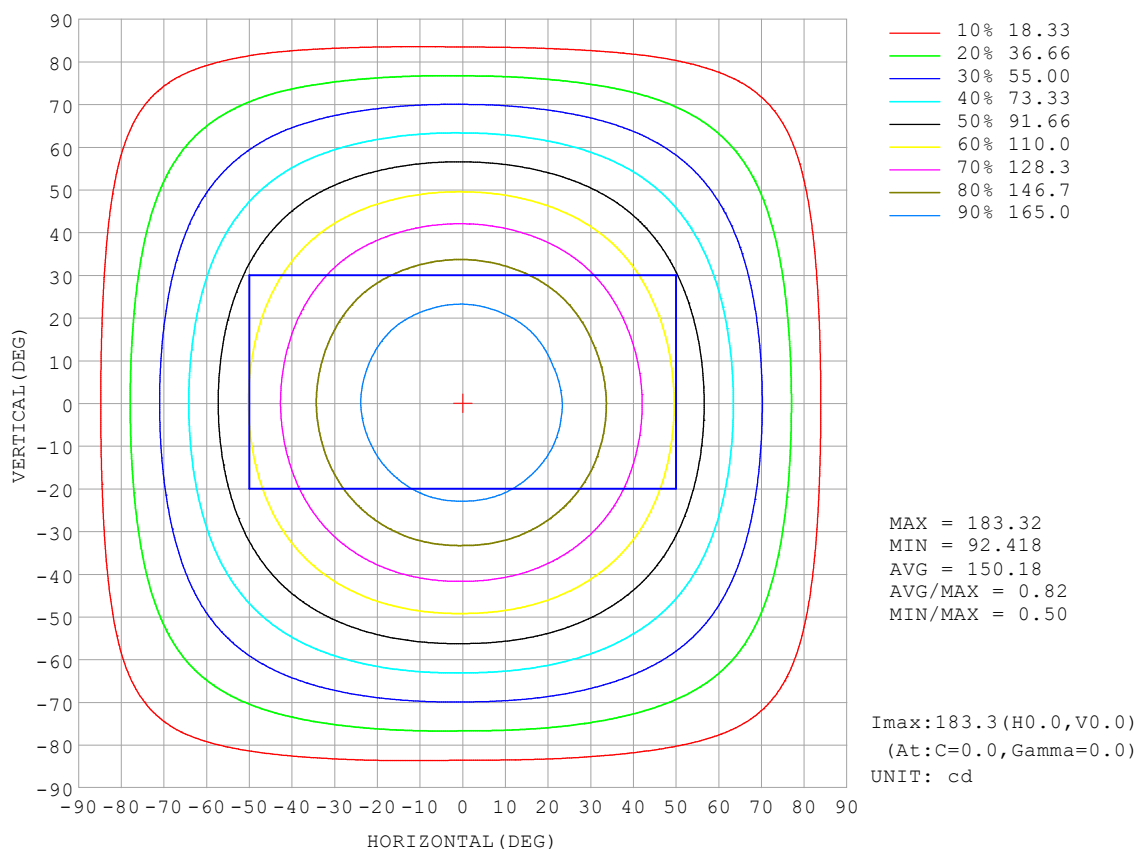
REFLECTANCE										
Ceiling	0.8	0.8	0.8	0.7	0.7	0.7	0.5	0.5	0.5	0
Walls	0.7	0.5	0.3	0.7	0.5	0.3	0.7	0.5	0.3	0
Working plane	0.2	0.2	0.2	0.2	0.2	0.2	0.2	0.2	0.2	0
ROOM INDEX	UTILIZATION FACTORS (PERCENT) $k(RI) \times RCR = 5$									
$k = 0.60$	55	44	37	55	43	37	53	43	36	30
0.80	65	53	46	64	53	46	62	52	45	38
1.00	74	62	54	72	61	54	70	62	53	46
1.25	81	70	62	79	69	62	76	67	61	53
1.50	86	75	68	84	74	67	80	72	66	58
2.00	93	83	77	90	82	76	86	79	74	65
2.50	97	88	82	94	87	81	90	84	78	69
3.00	100	93	87	98	91	85	93	87	83	73
4.00	104	98	93	101	96	91	97	92	88	78
5.00	107	102	97	104	99	95	99	95	92	81
ROOM INDEX	UF (total)									Direct
According to DIN EN 13032-2 2004			Suspended					SHRNOM = 1.25		

C Range: 0 - 360DEG  
 C Interval: 22.5DEG  
 Test Speed: HIGH  
 Temperature: 25.3°C  
 Operators: Cloud  
 Test Date: 2024-10-28

γ Range: 0 - 180DEG  
 γ Interval: 1.0DEG  
 Test System: EVERFINE GO-2000B\_V1 SYSTEM V2.00.488  
 Humidity: 65.0%  
 Test Distance: 6.360m [K=1.0000]  
 Remarks:

## ISOCANDELA DIAGRAM

Test:U:24.00V I:0.4176A P:10.02W PF:1.000 Freq:0Hz Lamp Flux:563.893x1 lm		
NAME: SF16-24V-3528-144-3000-80	TYPE:	WEIGHT:
SPEC.:	DIM.: Length=1m	SERIAL No.:
MFR.:	SUR.:	Shielding Angle:



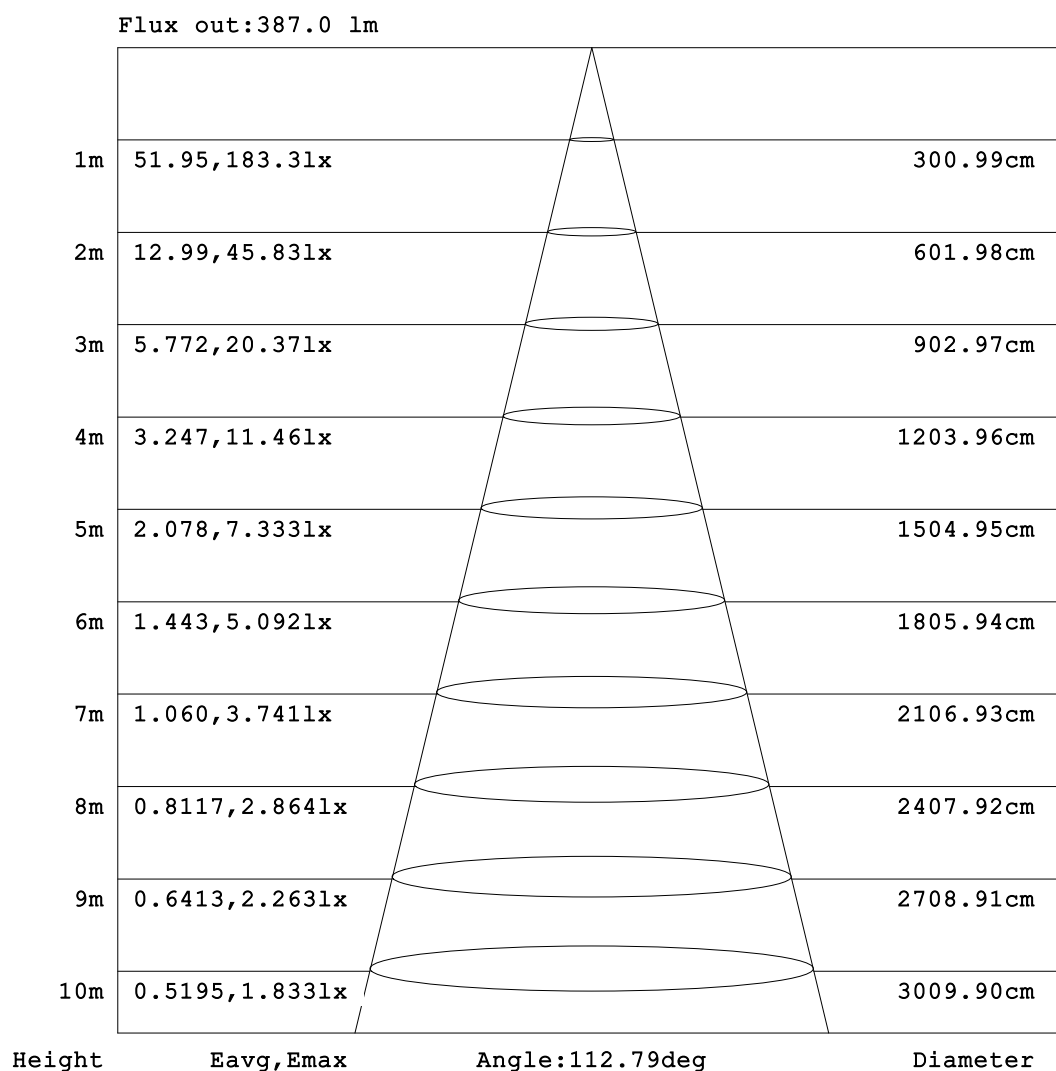
C Range: 0 - 360DEG  
C Interval: 22.5DEG  
Test Speed: HIGH  
Temperature:25.3℃  
Operators:Cloud  
Test Date:2024-10-28

γ Range: 0 - 180DEG  
γ Interval: 1.0DEG  
Test System:EVERFINE GO-2000B\_V1 SYSTEM V2.00.488  
Humidity:65.0%  
Test Distance:6.360m [K=1.0000]  
Remarks:



## AAI Figure

Test:U:24.00V I:0.4176A P:10.02W PF:1.000 Freq:0Hz Lamp Flux:563.893x1 lm		
NAME: SF16-24V-3528-144-3000-80	TYPE:	WEIGHT:
SPEC.:	DIM.: Length=1m	SERIAL No.:
MFR.:	SUR.:	Shielding Angle:



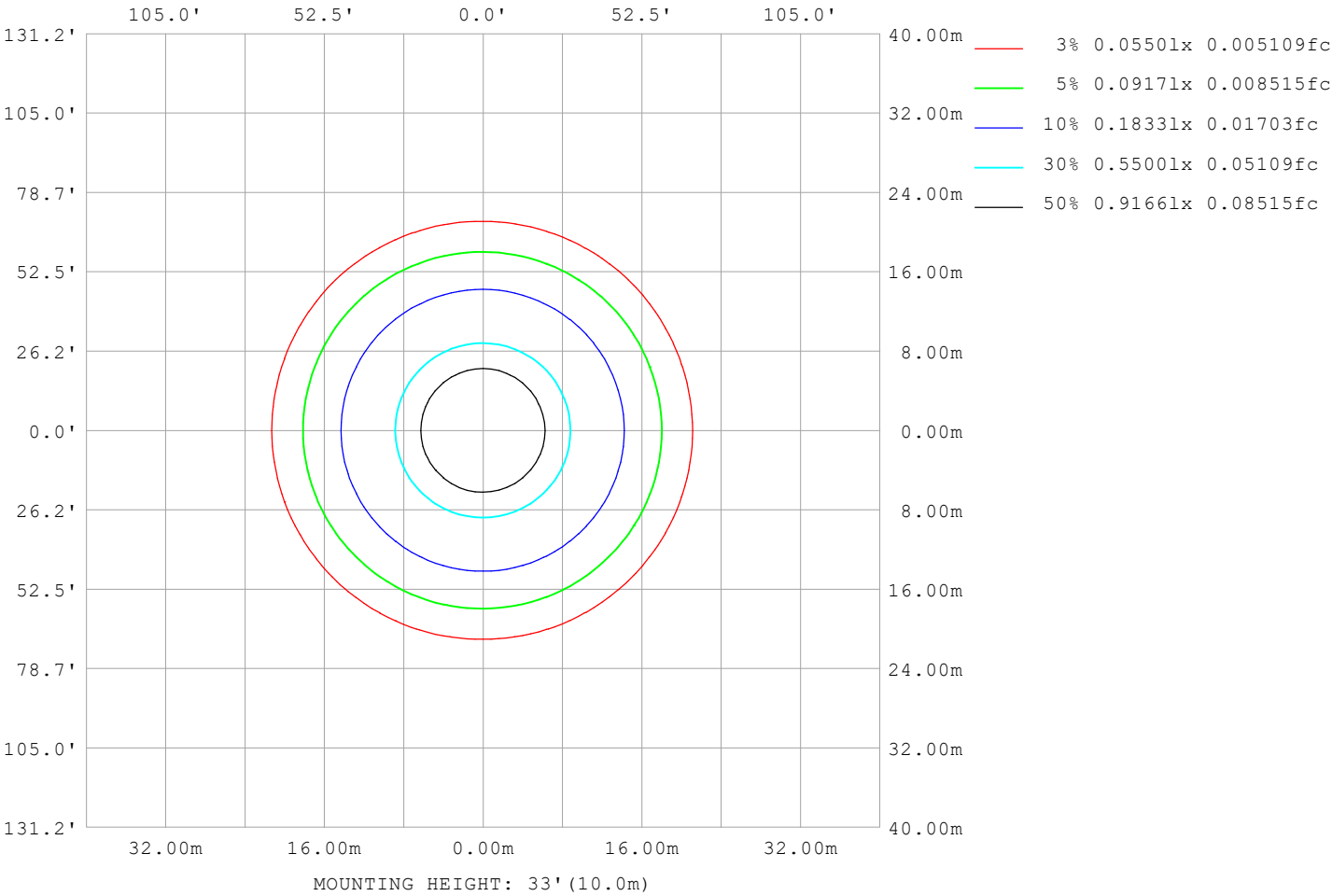
Note: The Curves indicate the illuminated area and the average illumination when the luminaire is at different distance.

C Range: 0 - 360DEG  
C Interval: 22.5DEG  
Test Speed: HIGH  
Temperature: 25.3°C  
Operators: Cloud  
Test Date: 2024-10-28

γ Range: 0 - 180DEG  
γ Interval: 1.0DEG  
Test System: EVERFINE GO-2000B\_V1 SYSTEM V2.00.488  
Humidity: 65.0%  
Test Distance: 6.360m [K=1.0000]  
Remarks:

ISOLUX DIAGRAM

Test:U:24.00V I:0.4176A P:10.02W PF:1.000 Freq:0Hz Lamp Flux:563.893x1 lm		
NAME: SF16-24V-3528-144-3000-80	TYPE:	WEIGHT:
SPEC.:	DIM.: Length=1m	SERIAL No.:
MFR.:	SUR.:	Shielding Angle:



C Range: 0 - 360DEG	γ Range: 0 - 180DEG
C Interval: 22.5DEG	γ Interval: 1.0DEG
Test Speed: HIGH	Test System:EVERFINE GO-2000B_V1 SYSTEM V2.00.488
Temperature:25.3℃	Humidity:65.0%
Operators:Cloud	Test Distance:6.360m [K=1.0000]
Test Date:2024-10-28	Remarks:

## LED Avg.L Report

Test:U:24.00V I:0.4176A P:10.02W PF:1.000 Freq:0Hz Lamp Flux:563.893x1 lm		
NAME: SF16-24V-3528-144-3000-80	TYPE:	WEIGHT:
SPEC.:	DIM.: Length=1m	SERIAL No.:
MFR.:	SUR.:	Shielding Angle:

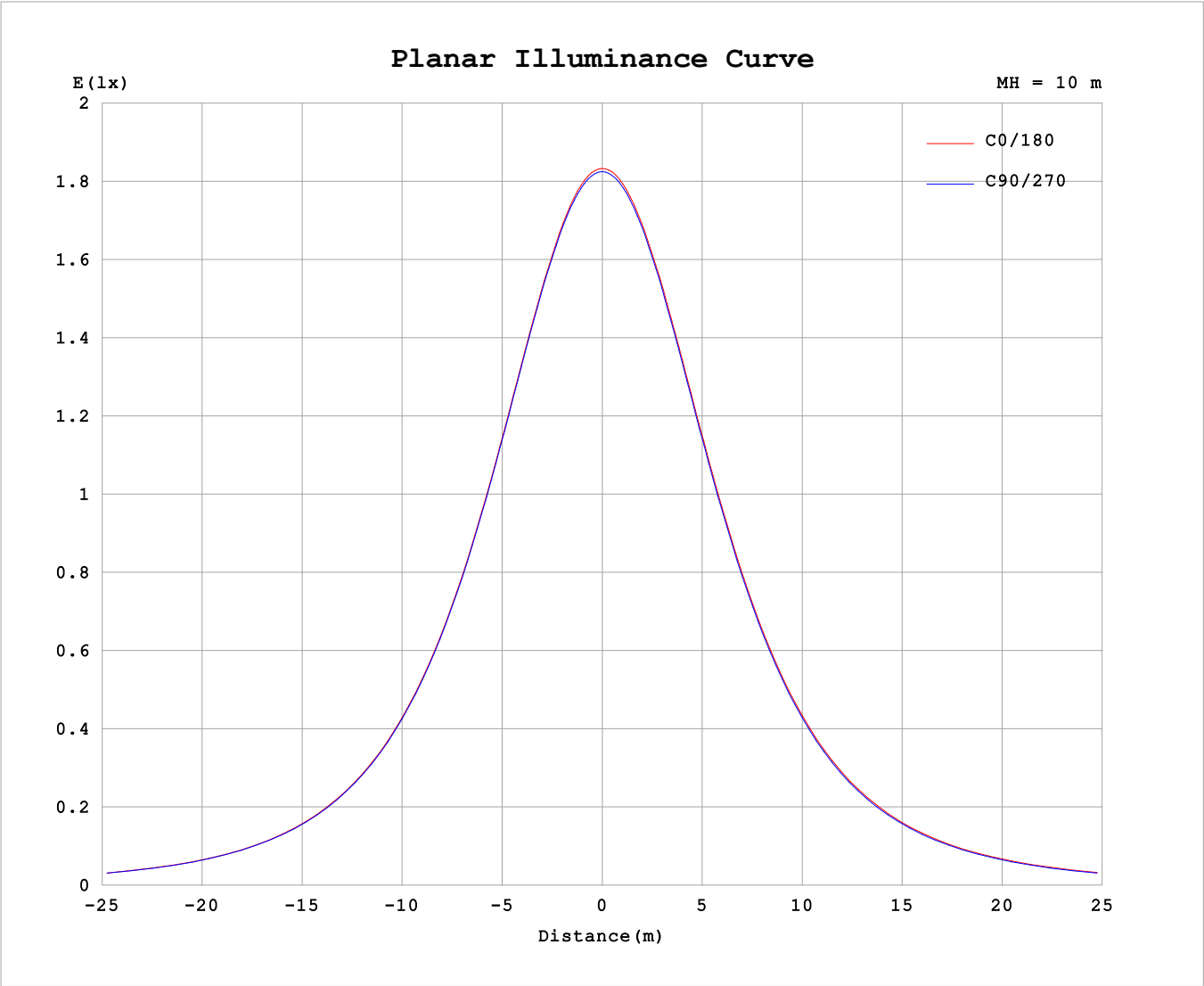
AvgL	cd/m2
L_0~180 (65) av	9730
L_0~180 (75) av	9792
L_0~180 (85) av	11207
L_90~270 (65) av	9546
L_90~270 (75) av	9383
L_90~270 (85) av	9654
L_45 (65) av	9692
L_45 (75) av	9692
L_45 (85) av	10750

Standard: GB/T 29293-2012

C Range: 0 - 360DEG  
C Interval: 22.5DEG  
Test Speed: HIGH  
Temperature:25.3℃  
Operators:Cloud  
Test Date:2024-10-28

γ Range: 0 - 180DEG  
γ Interval: 1.0DEG  
Test System:EVERFINE GO-2000B\_V1 SYSTEM V2.00.488  
Humidity:65.0%  
Test Distance:6.360m [K=1.0000]  
Remarks:

Planar Illuminance Curve



C Range: 0 - 360DEG	γ Range: 0 - 180DEG
C Interval: 22.5DEG	γ Interval: 1.0DEG
Test Speed: HIGH	Test System:EVERFINE GO-2000B_V1 SYSTEM V2.00.488
Temperature:25.3℃	Humidity:65.0%
Operators:Cloud	Test Distance:6.360m [K=1.0000]
Test Date:2024-10-28	Remarks:

## LUMINOUS DISTRIBUTION INTENSITY DATA

Test:U:24.00V I:0.4176A P:10.02W PF:1.000 Freq:0Hz Lamp Flux:563.893x1 lm																	
NAME: SF16-24V-3528-144-3000-80									TYPE:						WEIGHT:		
SPEC.:									DIM.: Length=1m						SERIAL No.:		
MFR.:									SUR.:						Shielding Angle:		

Table--1

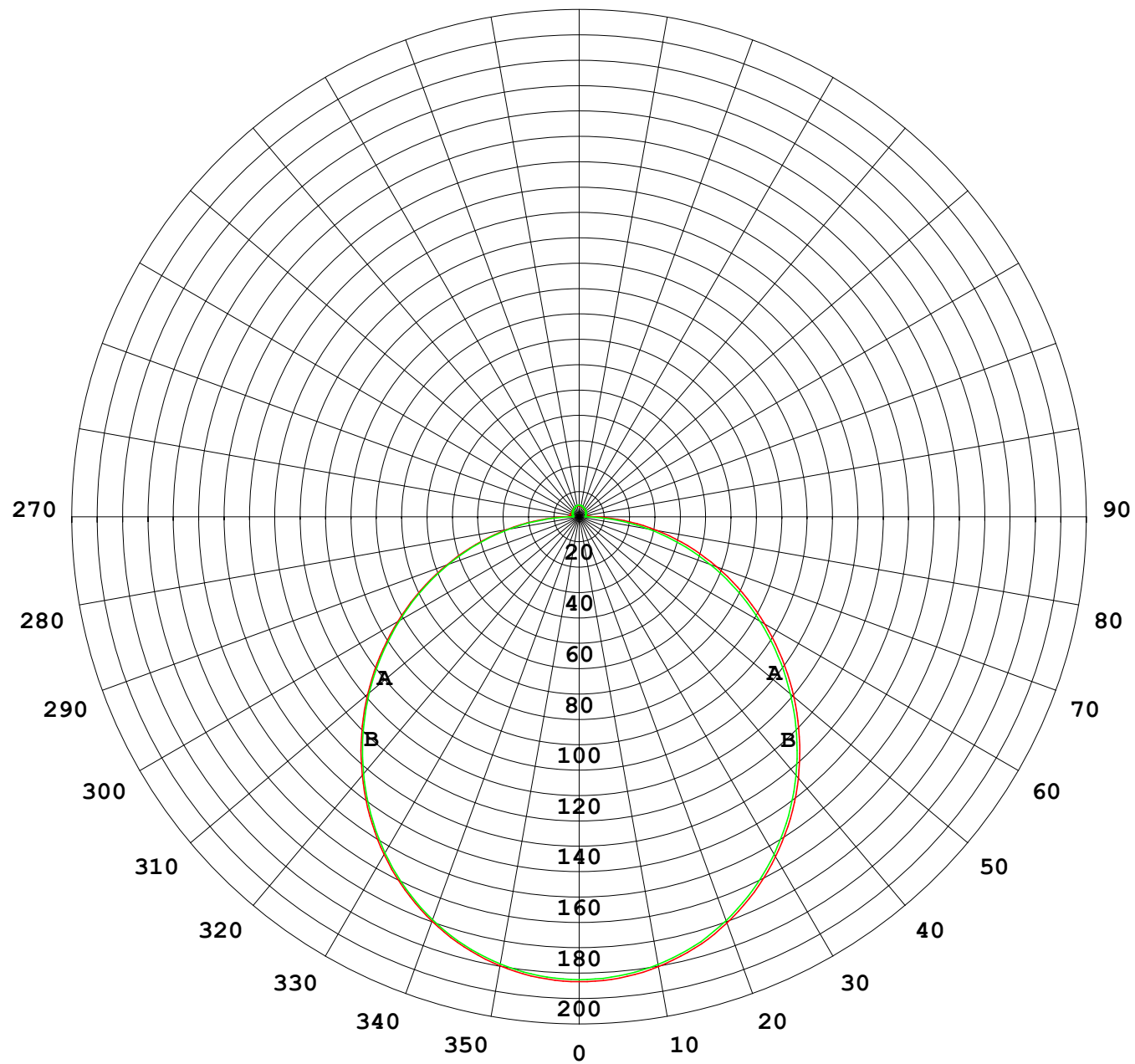
UNIT: cd

C (DEG) γ (DEG)	0	22.5	45	67.5	90	112.5	135	157.5	180	202.5	225	247.5	270	292.5	315	337.5			
0	183	183	183	183	183	183	183	183	183	183	183	183	183	183	183	183			
5	182	182	182	182	182	182	182	182	182	182	182	182	182	182	182	182			
10	179	179	179	179	179	179	179	179	179	179	180	179	179	179	179	179			
15	175	175	175	175	175	175	175	176	175	175	176	175	175	175	175	175			
20	169	169	169	169	169	170	170	170	170	170	170	170	170	169	169	169			
25	162	162	162	162	162	162	163	163	163	163	163	162	162	162	162	162			
30	153	153	153	153	153	154	154	154	154	154	155	154	154	154	154	153			
35	143	144	143	144	143	144	144	145	145	145	145	144	144	144	144	144			
40	133	133	132	133	132	133	134	134	134	134	134	133	133	133	133	133			
45	121	121	121	121	121	121	122	122	122	122	123	122	121	121	121	121			
50	109	108	108	108	108	109	110	110	110	110	110	109	109	109	109	109			
55	95.6	95.5	95.3	95.3	95.1	96.0	96.7	97.3	97.3	97.4	97.4	96.4	95.8	95.7	95.9	95.6			
60	82.3	82.3	82.0	82.0	81.8	82.8	83.5	84.2	84.2	84.2	84.2	83.1	82.4	82.3	82.6	82.4			
65	68.9	68.9	68.6	68.6	68.4	69.4	70.2	70.9	70.9	70.9	70.7	69.6	68.8	68.7	69.1	68.9			
70	55.4	55.4	55.1	55.1	54.8	55.9	56.7	57.5	57.5	57.5	57.2	55.9	55.0	55.1	55.5	55.4			
75	42.0	42.0	41.6	41.7	41.3	42.4	43.4	44.2	44.2	44.1	43.7	42.3	41.3	41.4	41.9	41.9			
80	28.7	28.7	28.3	28.3	27.9	29.1	30.1	30.9	31.0	30.7	30.2	28.8	27.6	27.8	28.4	28.6			
85	15.5	15.5	15.1	15.0	14.6	15.9	16.9	17.7	17.7	17.4	16.8	15.3	14.1	14.4	15.0	15.3			
90	6.13	5.97	5.15	4.12	2.64	4.32	5.83	6.94	7.08	6.69	5.73	4.10	2.44	3.84	5.21	5.95			
95	3.90	3.76	3.45	2.90	2.49	2.64	3.18	3.52	3.47	3.50	3.24	2.73	2.44	2.85	3.50	3.78			
100	3.79	3.63	3.30	2.71	2.57	2.57	2.85	3.21	3.20	3.19	2.89	2.64	2.50	2.49	3.24	3.57			
105	3.66	3.46	3.17	2.70	2.70	2.71	2.77	2.98	2.92	2.88	2.81	2.73	2.62	2.33	2.95	3.21			
110	3.49	3.37	3.14	2.87	2.86	2.88	2.88	2.96	2.75	2.81	2.90	2.84	2.78	2.49	2.77	2.85			
115	3.47	3.34	3.06	2.99	3.01	3.04	3.03	3.07	2.78	2.87	3.00	2.96	2.94	2.66	2.74	2.71			
120	3.37	3.25	3.11	3.13	3.14	3.20	3.18	3.22	2.92	2.99	3.12	3.09	3.07	2.80	3.07	2.78			
125	3.38	3.38	3.21	3.27	3.28	3.35	3.33	3.37	3.06	3.12	3.24	3.21	3.21	2.97	3.21	2.99			
130	3.51	3.52	3.35	3.41	3.42	3.50	3.48	3.52	3.21	3.25	3.36	3.34	3.36	3.16	3.33	3.25			
135	3.65	3.66	3.48	3.54	3.55	3.65	3.63	3.66	3.36	3.40	3.51	3.48	3.50	3.40	3.47	3.44			
140	3.77	3.64	3.62	3.68	3.68	3.80	3.78	3.80	3.52	3.55	3.65	3.63	3.65	3.62	3.63	3.57			
145	3.89	3.76	3.76	3.81	3.82	3.94	3.93	3.94	3.68	3.71	3.80	3.78	3.80	3.77	3.78	3.72			
150	4.02	3.89	3.89	3.96	4.05	4.09	4.08	4.08	3.85	3.86	3.95	3.94	3.95	3.91	3.93	3.86			
155	4.16	4.03	4.02	4.19	4.20	4.24	4.22	4.23	4.01	4.03	4.10	4.09	4.11	4.06	4.07	4.01			
160	4.29	4.16	4.29	4.33	4.33	4.39	4.36	4.37	4.17	4.18	4.24	4.23	4.26	4.21	4.22	4.17			
165	4.41	4.29	4.41	4.45	4.46	4.50	4.47	4.48	4.30	4.33	4.39	4.38	4.40	4.35	4.35	4.31			
170	4.39	4.45	4.51	4.56	4.56	4.59	4.55	4.56	4.32	4.45	4.50	4.50	4.52	4.48	4.49	4.44			
175	4.43	4.60	4.58	4.64	4.63	4.66	4.62	4.62	4.43	4.55	4.60	4.59	4.63	4.58	4.58	4.54			
180	4.47	4.61	4.62	4.66	4.67	4.67	4.64	4.64	4.48	4.61	4.63	4.65	4.67	4.66	4.65	4.62			

C Range: 0 - 360DEG  
C Interval: 22.5DEG  
Test Speed: HIGH  
Temperature:25.3℃  
Operators:Cloud  
Test Date:2024-10-28

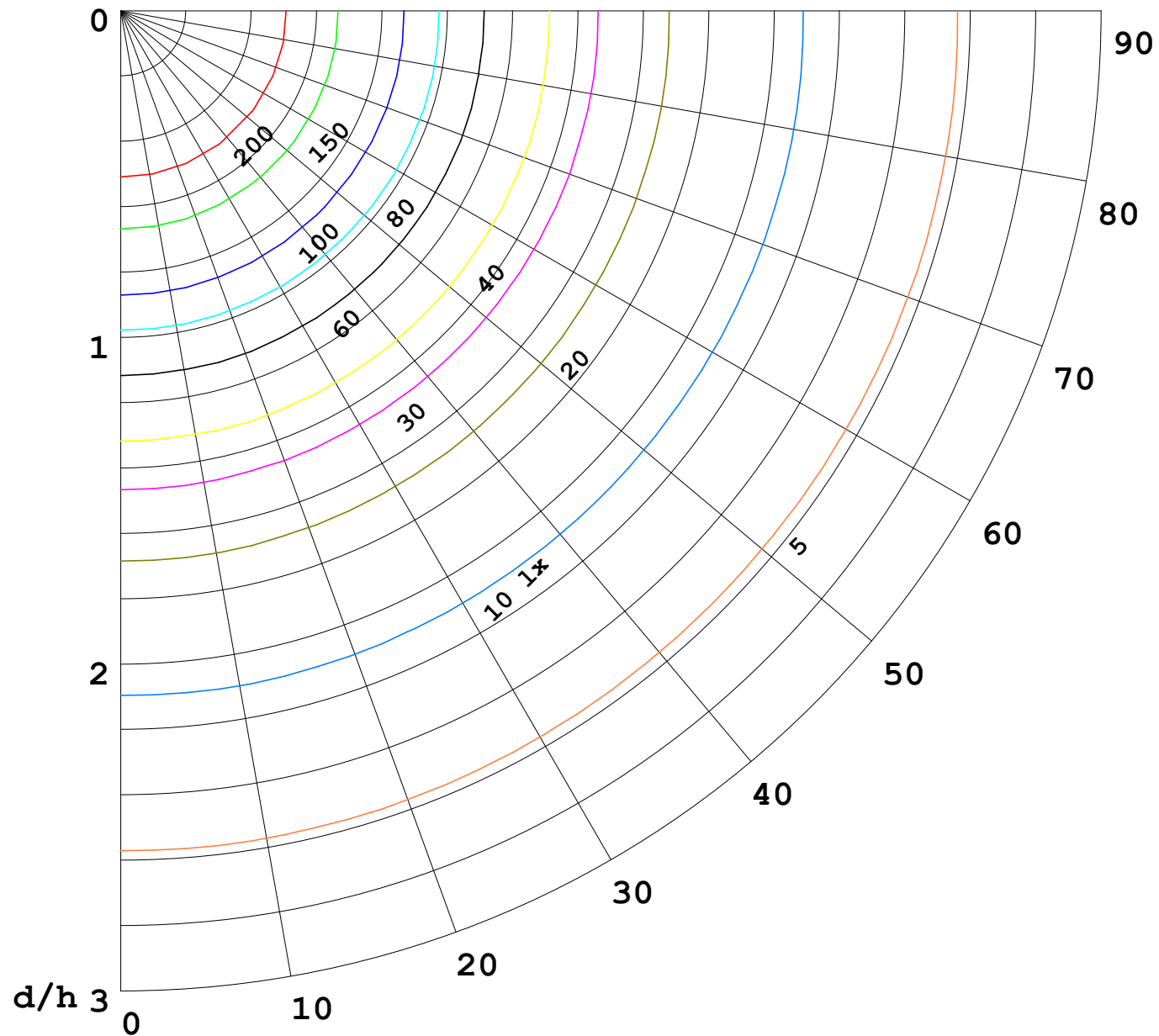
γ Range: 0 - 180DEG  
γ Interval: 1.0DEG  
Test System:EVERFINE GO-2000B\_V1 SYSTEM V2.00.488  
Humidity:65.0%  
Test Distance:6.360m [K=1.0000]  
Remarks:

I (cd)



1000 lm

$\kappa = 1$



F = 1000 lm  
 K = 0.7  
 Hcc = 0.8 m  
 Hfc = 0.0 m  
 Eave = 100 lx

	Pcc	Pw	Pfc
————	70	50	30
————	50	30	20

