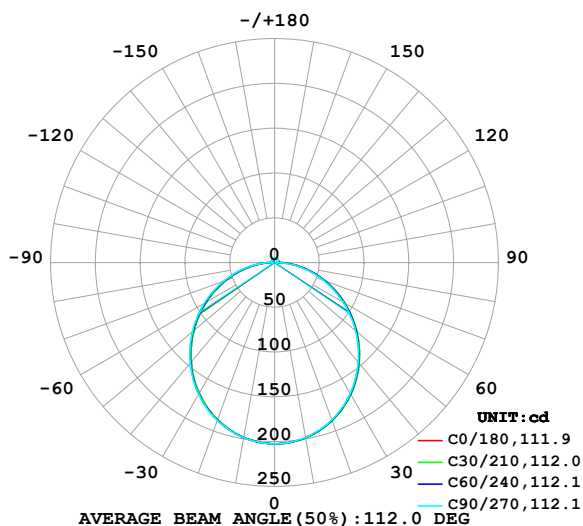


LUMINAIRE PHOTOMETRIC TEST REPORT

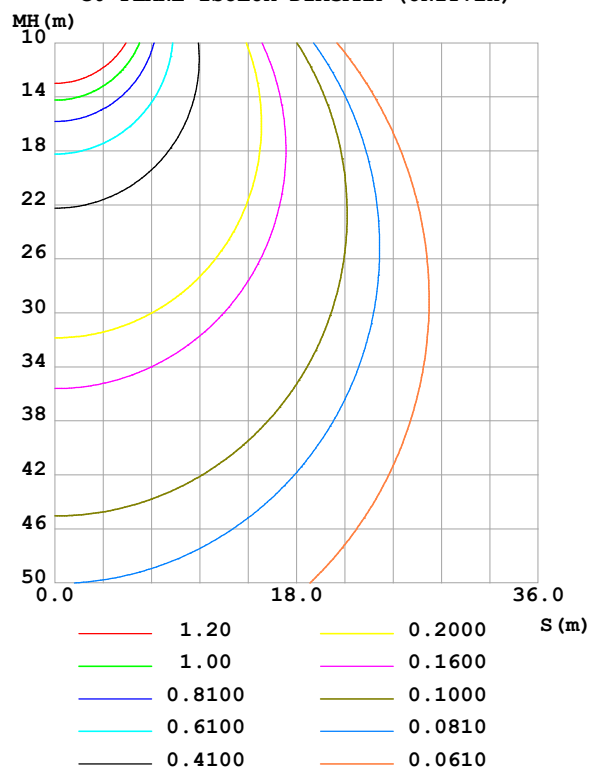
Test:U:24.00V I:0.4083A P:9.799W PF:1.000 Freq:0Hz Lamp Flux:612.116x1 lm		
NAME: SF16-24V-3528-144-4500K-80	TYPE:	WEIGHT:
SPEC.:	DIM.: Length=1m	SERIAL No.:
MFR.: OLympia lighting	SUR.:	Shielding Angle:

DATA OF LAMP		PHOTOMETRIC DATA				Eff: 62.47 lm/W
MODEL	3528	I _{max} (cd)	202.4	S/MH(C0/180)	1.24	
NOMINAL POWER(W)	10	LOR(%)	100.0	S/MH(C90/270)	1.25	
RATED VOLTAGE(V)	24	TOTAL FLUX(lm)	612.12	η UP,DN(C0-180)	1.9,47.9	
NOMINAL FLUX(lm)	612.116	CIE CLASS	DIRECT	η UP,DN(C180-360)	1.9,48.3	
LAMPS INSIDE	1	η up (%)	3.8	CIBSE SHR NOM	1.25	
TEST VOLTAGE(V)		η down (%)	96.2	CIBSE SHR MAX	1.35	

LUMINOUS INTENSITY DISTRIBUTION DIAGRAM



C0 PLANE ISOLUX DIAGRAM (UNIT:lx)



C Range: 0 - 360DEG
C Interval: 30.0DEG
Test Speed: HIGH
Temperature:25.3℃
Operators:
Test Date:2025-02-15

γ Range: 0 - 180DEG
γ Interval: 1.0DEG
Test System:EVERFINE GO-2000B_V1 SYSTEM V2.00.488
Humidity:65.0%
Test Distance:6.360m [K=1.0000]
Remarks:

ZONAL FLUX DIAGRAM

ZONAL FLUX DIAGRAM:

γ	C0	C45	C90	C135	C180	C225	C270	C315	γ	Φ zone	Φ total	%lum, lamp
10	198.7	198.8	198.4	198.1	198.2	198.3	198.6	198.9	0- 10	19.13	19.13	3.13,3.13
20	187.6	187.6	187.0	186.4	186.6	186.9	187.5	188.0	10- 20	54.66	73.80	12.1,12.1
30	169.9	169.8	168.9	168.2	168.6	169.0	169.8	170.5	20- 30	82.50	156.3	25.5,25.5
40	146.8	146.5	145.3	144.4	145.0	145.6	146.6	147.5	30- 40	98.98	255.3	41.7,41.7
50	119.7	119.4	117.9	116.7	117.5	118.3	119.7	120.5	40- 50	102.4	357.7	58.4,58.4
60	90.41	89.94	88.33	86.90	87.74	88.70	90.39	91.24	50- 60	93.10	450.8	73.6,73.6
70	60.38	59.97	58.17	56.66	57.37	58.47	60.37	61.18	60- 70	73.39	524.2	85.6,85.6
80	31.12	30.86	28.75	27.48	27.96	29.06	30.85	31.79	70- 80	46.74	570.9	93.3,93.3
90	7.202	6.100	2.819	4.356	5.531	5.239	3.988	6.503	80- 90	17.72	588.6	96.2,96.2
100	2.873	3.221	2.946	2.754	2.396	3.200	3.911	3.265	90-100	3.665	592.3	96.8,96.8
110	3.132	3.438	3.221	3.060	2.690	3.446	4.150	3.485	100-110	3.389	595.7	97.3,97.3
120	3.486	3.716	3.518	3.392	3.012	3.671	4.277	3.709	110-120	3.445	599.1	97.9,97.9
130	3.823	3.976	3.853	3.713	3.349	3.892	4.350	3.898	120-130	3.348	602.5	98.4,98.4
140	4.120	4.217	4.151	4.045	3.709	4.113	4.410	4.037	130-140	3.078	605.5	98.9,98.9
150	4.417	4.465	4.477	4.398	4.109	4.362	4.557	4.233	140-150	2.656	608.2	99.4,99.4
160	4.696	4.724	4.778	4.739	4.495	4.628	4.728	4.521	150-160	2.087	610.3	99.7,99.7
170	4.906	4.952	5.014	4.977	4.843	4.890	4.921	4.868	160-170	1.355	611.6	99.9,99.9
180	5.024	5.062	5.101	5.074	5.024	5.062	5.098	5.070	170-180	0.4757	612.1	100,100
DEG	LUMINOUS INTENSITY:cd									UNIT:lm		

Conical surface Flux(90deg): 306.88 lm

%lum = 50.1%

%lamp = 50.1%

Conical surface Flux(130deg): 490.45 lm

%lum = 80.1%

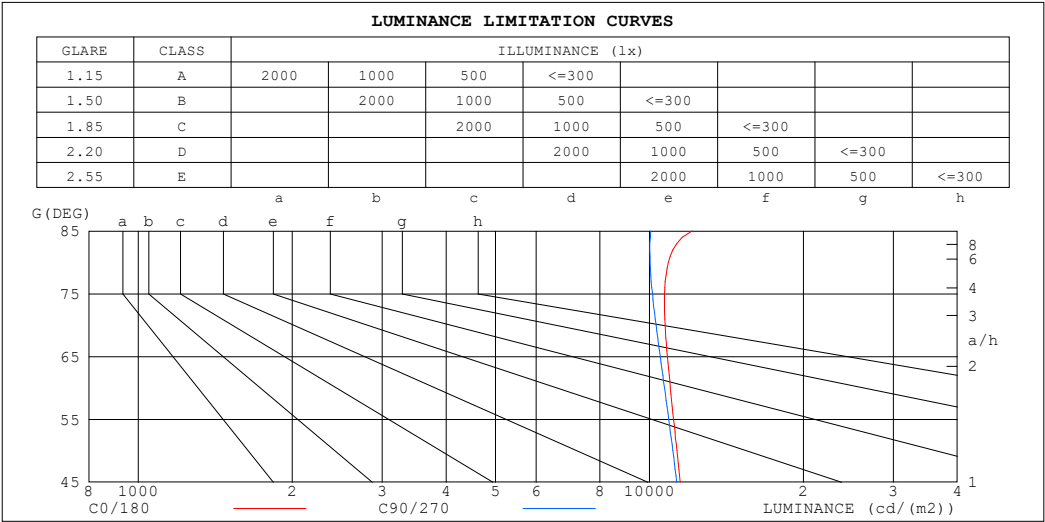
%lamp = 80.1%

C Range: 0 - 360DEG
 C Interval: 30.0DEG
 Test Speed: HIGH
 Temperature:25.3℃
 Operators:
 Test Date:2025-02-15

γ Range: 0 - 180DEG
 γ Interval: 1.0DEG
 Test System:EVERFINE GO-2000B_V1 SYSTEM V2.00.488
 Humidity:65.0%
 Test Distance:6.360m [K=1.0000]
 Remarks:

LUMINANCE LIMITATION CURVES

Test:U:24.00V I:0.4083A P:9.799W PF:1.000 Freq:0Hz Lamp Flux:612.116x1 lm		
NAME: SF16-24V-3528-144-4500K-80	TYPE:	WEIGHT:
SPEC.:	DIM.: Length=1m	SERIAL No.:
MFR.: OLympia lighting	SUR.:	Shielding Angle:



LUMINANCE cd/(m2)		
G (DEG)	C0/180	C90/270
85	12104	10058
80	10889	10027
75	10698	10139
70	10725	10300
65	10840	10496
60	10985	10699
55	11146	10905
50	11317	11110
45	11476	11303

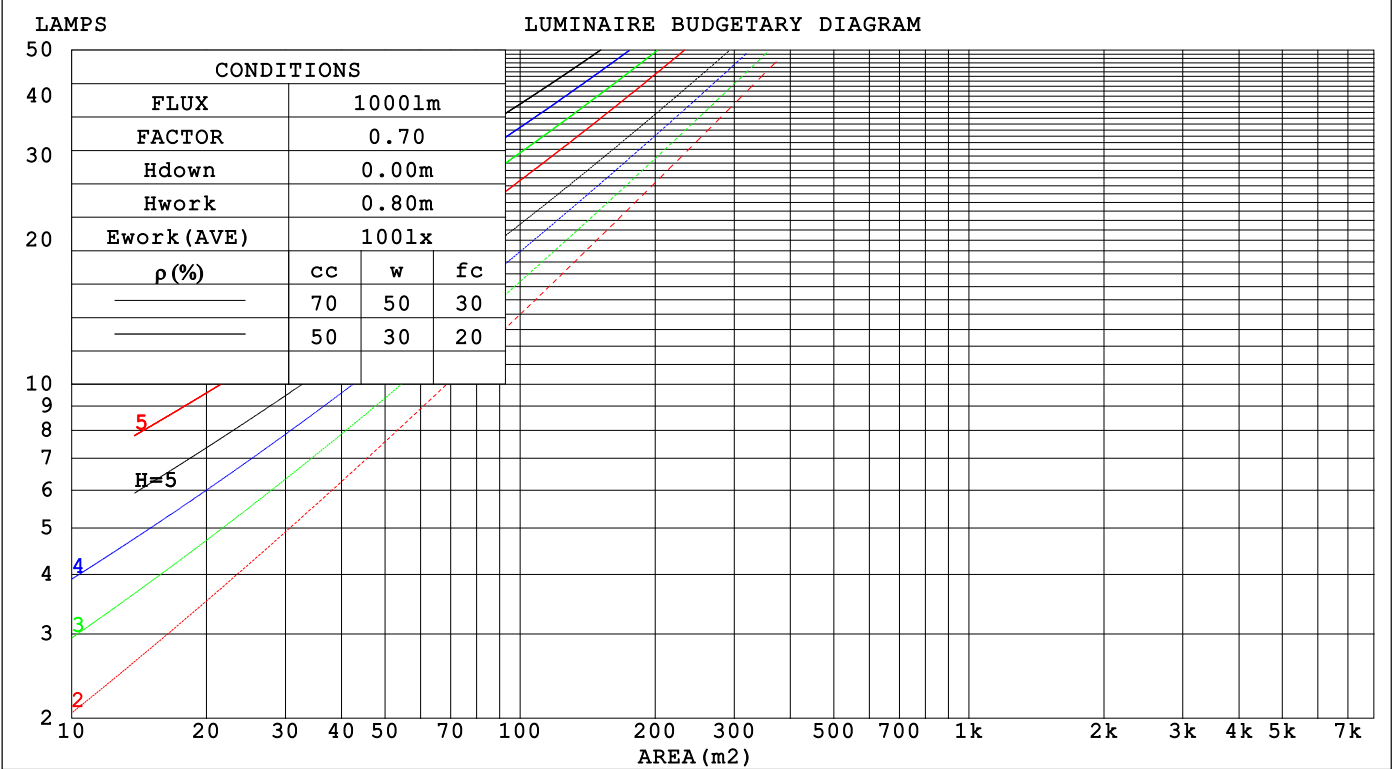
C Range: 0 - 360DEG
C Interval: 30.0DEG
Test Speed: HIGH
Temperature:25.3℃
Operators:
Test Date:2025-02-15

γ Range: 0 - 180DEG
γ Interval: 1.0DEG
Test System:EVERFINE GO-2000B_V1 SYSTEM V2.00.488
Humidity:65.0%
Test Distance:6.360m [K=1.0000]
Remarks:

CU AND LUMINAIRE BUDGETARY ESTIMATE DIAGRAM

Test:U:24.00V I:0.4083A P:9.799W PF:1.000 Freq:0Hz		
Lamp Flux:612.116x1 lm		
NAME: SF16-24V-3528-144-4500K-80	TYPE:	WEIGHT:
SPEC.:	DIM.: Length=1m	SERIAL No.:
MFR.: OLYMPIA lighting	SUR.:	Shielding Angle:

pcc	80%			70%			50%			30%			10%			0
pw	50%	30%	10%	50%	30%	10%	50%	30%	10%	50%	30%	10%	50%	30%	10%	0
pfc	20%			20%			20%			20%			20%			0
RCR	RCR:Room Cavity Ratio			Coefficients of Utilization(CU)												
0.0	1.18	1.18	1.18	1.15	1.15	1.15	1.09	1.09	1.09	1.04	1.04	1.04	.99	.99	.99	.96
1.0	1.02	.98	.94	.90	.95	.92	.95	.91	.88	.90	.87	.85	.86	.84	.82	.79
2.0	.89	.82	.76	.87	.80	.75	.82	.77	.72	.78	.74	.70	.75	.71	.68	.65
3.0	.78	.69	.63	.76	.68	.62	.72	.66	.60	.69	.63	.59	.66	.61	.57	.55
4.0	.69	.60	.53	.67	.59	.52	.64	.57	.51	.61	.55	.50	.59	.53	.49	.47
5.0	.61	.52	.46	.60	.51	.45	.57	.50	.44	.55	.48	.43	.53	.47	.43	.40
6.0	.55	.46	.40	.54	.46	.39	.52	.44	.39	.50	.43	.38	.48	.42	.37	.35
7.0	.50	.41	.35	.49	.41	.35	.47	.40	.34	.45	.39	.34	.44	.38	.33	.31
8.0	.46	.37	.31	.45	.37	.31	.43	.36	.31	.42	.35	.30	.40	.34	.30	.28
9.0	.42	.34	.28	.41	.33	.28	.40	.32	.27	.38	.32	.27	.37	.31	.27	.25
10.0	.39	.31	.25	.38	.30	.25	.37	.30	.25	.35	.29	.25	.34	.29	.24	.23



C Range: 0 - 360DEG
C Interval: 30.0DEG
Test Speed: HIGH
Temperature:25.3℃
Operators:
Test Date:2025-02-15

γ Range: 0 - 180DEG
γ Interval: 1.0DEG
Test System:EVERFINE GO-2000B_V1 SYSTEM V2.00.488
Humidity:65.0%
Test Distance:6.360m [K=1.0000]
Remarks:

WEC AND CCEC

Test:U:24.00V I:0.4083A P:9.799W PF:1.000 Freq:0Hz Lamp Flux:612.116x1 lm		
NAME: SF16-24V-3528-144-4500K-80	TYPE:	WEIGHT:
SPEC.:	DIM.: Length=1m	SERIAL No.:
MFR.: OLympia lighting	SUR.:	Shielding Angle:

pcc	80%			70%			50%			30%			10%			0														
pw	50%	30%	10%	50%	30%	10%	50%	30%	10%	50%	30%	10%	50%	30%	10%	0														
pfc	20%			20%			20%			20%			20%			0														
RCR	RCR:Room Cavity Ratio															Wall Exitance Coefficients(WEC)														
0.0																														
1.0	.324	.184	.058	.315	.180	.057	.300	.172	.055	.286	.165	.053	.272	.158	.051															
2.0	.299	.164	.050	.292	.161	.050	.278	.155	.048	.265	.149	.047	.254	.143	.045															
3.0	.274	.146	.044	.268	.143	.043	.256	.139	.042	.244	.134	.041	.234	.129	.040															
4.0	.252	.131	.038	.246	.129	.038	.235	.125	.037	.225	.121	.036	.215	.117	.036															
5.0	.232	.118	.034	.227	.116	.034	.217	.113	.033	.208	.110	.033	.199	.107	.032															
6.0	.215	.108	.031	.210	.106	.031	.201	.103	.030	.193	.100	.029	.185	.098	.029															
7.0	.199	.099	.028	.195	.097	.028	.187	.095	.027	.180	.092	.027	.173	.090	.026															
8.0	.186	.091	.026	.182	.090	.025	.175	.087	.025	.168	.085	.025	.162	.083	.024															
9.0	.174	.084	.024	.171	.083	.023	.164	.081	.023	.158	.079	.023	.152	.077	.022															
10.0	.164	.078	.022	.161	.078	.022	.155	.076	.021	.149	.074	.021	.144	.072	.021															

pcc	80%			70%			50%			30%			10%			0
pw	50%	30%	10%	50%	30%	10%	50%	30%	10%	50%	30%	10%	50%	30%	10%	0
pfc	20%			20%			20%			20%			20%			0
RCR	RCR:Room Cavity Ratio						Ceiling Cavity Exitance Coefficients (CCEC)									
0.0	.220	.220	.220	.188	.188	.188	.128	.128	.128	.074	.074	.074	.024	.024	.024	
1.0	.211	.186	.163	.180	.159	.140	.123	.110	.097	.071	.063	.056	.023	.020	.018	
2.0	.203	.162	.127	.174	.139	.110	.119	.096	.076	.069	.056	.045	.022	.018	.015	
3.0	.195	.144	.104	.167	.124	.090	.115	.086	.063	.066	.050	.037	.021	.016	.012	
4.0	.188	.131	.088	.161	.113	.076	.111	.079	.054	.064	.046	.032	.021	.015	.010	
5.0	.180	.121	.077	.155	.104	.067	.106	.073	.047	.062	.043	.028	.020	.014	.009	
6.0	.173	.112	.069	.149	.097	.060	.102	.068	.043	.059	.040	.025	.019	.013	.008	
7.0	.166	.106	.063	.143	.092	.055	.099	.064	.039	.057	.038	.023	.019	.012	.008	
8.0	.159	.100	.059	.137	.087	.051	.095	.061	.036	.055	.036	.022	.018	.012	.007	
9.0	.153	.095	.056	.132	.082	.048	.092	.058	.034	.053	.034	.021	.017	.011	.007	
10.0	.148	.091	.053	.127	.079	.046	.088	.055	.033	.051	.033	.020	.017	.011	.006	

C Range: 0 - 360DEG
C Interval: 30.0DEG
Test Speed: HIGH
Temperature:25.3℃
Operators:
Test Date:2025-02-15

γ Range: 0 - 180DEG
γ Interval: 1.0DEG
Test System:EVERFINE GO-2000B_V1 SYSTEM V2.00.488
Humidity:65.0%
Test Distance:6.360m [K=1.0000]
Remarks:

UGR(Unified Glare Rating) Table

Test:U:24.00V I:0.4083A P:9.799W PF:1.000 Freq:0Hz Lamp Flux:612.116x1 lm										
NAME: SF16-24V-3528-144-4500K-80					TYPE:			WEIGHT:		
SPEC.:					DIM.: Length=1m			SERIAL No.:		
MFR.: OLympia lighting					SUR.:			Shielding Angle:		
ceiling/cavity	0.7	0.7	0.5	0.5	0.3	0.7	0.7	0.5	0.5	0.3
walls	0.5	0.3	0.5	0.3	0.3	0.5	0.3	0.5	0.3	0.3
working plane	0.2	0.2	0.2	0.2	0.2	0.2	0.2	0.2	0.2	0.2
Room dimensions	Viewed crosswise					Viewed endwise				
x = 2H y = 2H	22.6	24.1	23.0	24.4	24.7	22.5	24.0	22.9	24.3	24.6
3H	24.3	25.7	24.7	26.0	26.3	24.2	25.5	24.5	25.8	26.2
4H	25.1	26.4	25.4	26.7	27.0	24.9	26.2	25.3	26.5	26.9
6H	25.7	26.9	26.1	27.3	27.6	25.5	26.7	25.9	27.1	27.4
8H	26.0	27.2	26.4	27.5	27.9	25.7	26.9	26.1	27.2	27.6
12H	26.2	27.3	26.6	27.7	28.1	25.9	27.0	26.3	27.4	27.8
4H 2H	23.3	24.6	23.6	24.9	25.2	23.2	24.5	23.6	24.8	25.1
3H	25.2	26.3	25.6	26.7	27.0	25.0	26.2	25.4	26.5	26.9
4H	26.0	27.1	26.5	27.5	27.9	25.9	26.9	26.3	27.3	27.7
6H	26.8	27.8	27.3	28.2	28.6	26.6	27.6	27.1	28.0	28.4
8H	27.2	28.0	27.6	28.5	28.9	26.9	27.8	27.4	28.2	28.7
12H	27.5	28.3	27.9	28.7	29.2	27.2	27.9	27.6	28.4	28.9
8H 4H	26.4	27.2	26.8	27.7	28.1	26.2	27.1	26.7	27.5	28.0
6H	27.4	28.1	27.9	28.6	29.1	27.2	27.9	27.7	28.4	28.9
8H	27.8	28.5	28.3	29.0	29.5	27.6	28.2	28.1	28.7	29.2
12H	28.2	28.8	28.8	29.3	29.9	27.9	28.5	28.5	29.0	29.6
12H 4H	26.4	27.2	26.9	27.7	28.1	26.3	27.1	26.8	27.5	28.0
6H	27.5	28.1	28.0	28.6	29.1	27.3	27.9	27.8	28.4	28.9
8H	28.0	28.5	28.5	29.0	29.6	27.7	28.3	28.3	28.8	29.4
Variations with the observer position at spacings(CIE Pub.117):										
S = 1.0H	+ 0.1 / - 0.2					+ 0.1 / - 0.2				
1.5H	+ 0.2 / - 0.3					+ 0.2 / - 0.3				
2.0H	+ 0.1 / - 0.3					+ 0.1 / - 0.3				

CIE Pub.117, 612.1 lm Total Lamp Luminous Flux Correct (8log(F/F0) = -1.7)
Area: 0.0165 m2

C Range: 0 - 360DEG
C Interval: 30.0DEG
Test Speed: HIGH
Temperature:25.3℃
Operators:
Test Date:2025-02-15

γ Range: 0 - 180DEG
γ Interval: 1.0DEG
Test System:EVERFINE GO-2000B_V1 SYSTEM V2.00.488
Humidity:65.0%
Test Distance:6.360m [K=1.0000]
Remarks:

UTILIZATION FACTORS TABLE

Test:U:24.00V I:0.4083A P:9.799W PF:1.000 Freq:0Hz Lamp Flux:612.116x1 lm		
NAME: SF16-24V-3528-144-4500K-80	TYPE:	WEIGHT:
SPEC.:	DIM.: Length=1m	SERIAL No.:
MFR.: OLympia lighting	SUR.:	Shielding Angle:

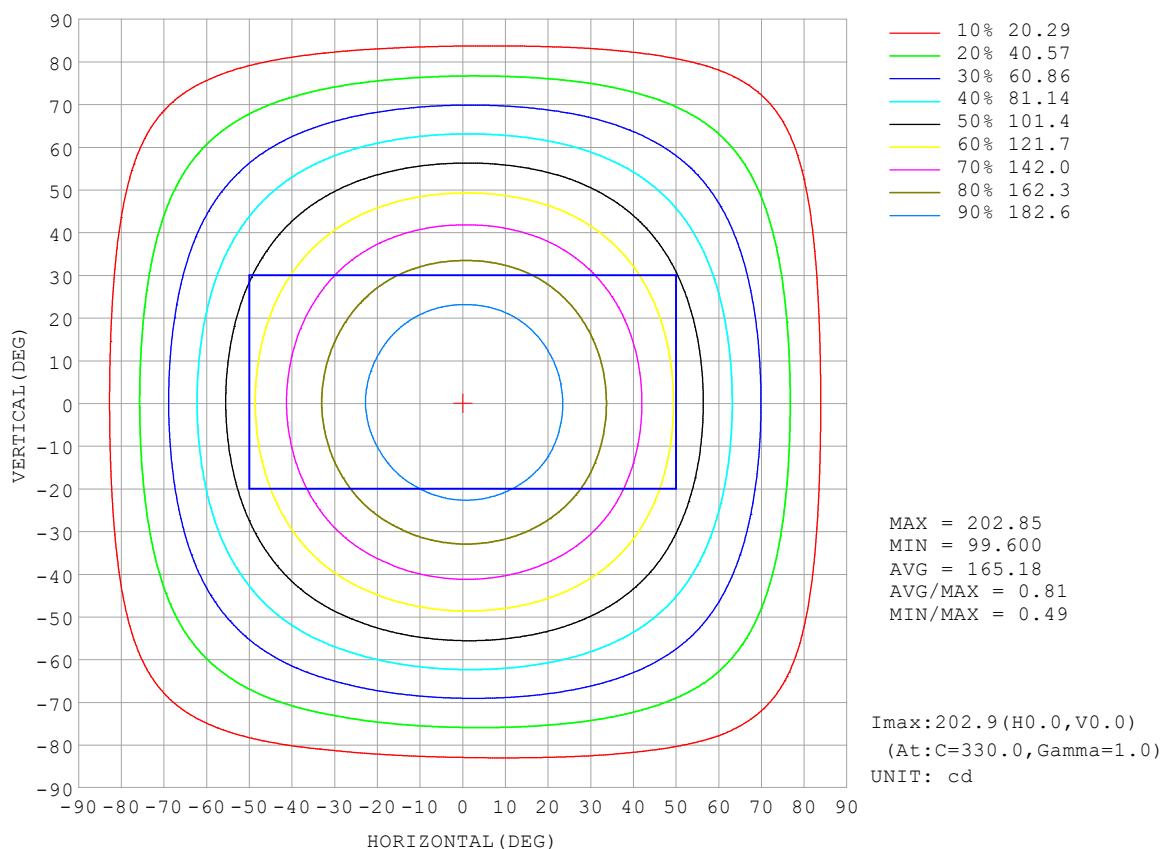
REFLECTANCE										
Ceiling	0.8	0.8	0.8	0.7	0.7	0.7	0.5	0.5	0.5	0
Walls	0.7	0.5	0.3	0.7	0.5	0.3	0.7	0.5	0.3	0
Working plane	0.2	0.2	0.2	0.2	0.2	0.2	0.2	0.2	0.2	0
ROOM INDEX	UTILIZATION FACTORS (PERCENT) $k(RI) \times RCR = 5$									
$k = 0.60$	56	44	37	55	44	37	54	43	37	30
0.80	66	54	46	64	53	46	62	52	46	38
1.00	74	63	55	73	62	55	70	63	54	46
1.25	81	70	63	79	69	62	76	67	61	53
1.50	86	76	68	84	75	68	81	72	66	58
2.00	93	84	77	91	82	76	87	80	74	66
2.50	97	89	82	95	87	81	90	84	79	70
3.00	100	93	87	98	91	86	93	88	83	74
4.00	104	98	93	102	96	92	97	92	89	78
5.00	107	102	97	104	100	96	99	95	92	81
ROOM INDEX	UF (total)									Direct
According to DIN EN 13032-2 2004			Suspended					SHRNOM = 1.25		

C Range: 0 - 360DEG
 C Interval: 30.0DEG
 Test Speed: HIGH
 Temperature: 25.3°C
 Operators:
 Test Date: 2025-02-15

γ Range: 0 - 180DEG
 γ Interval: 1.0DEG
 Test System: EVERFINE GO-2000B_V1 SYSTEM V2.00.488
 Humidity: 65.0%
 Test Distance: 6.360m [K=1.0000]
 Remarks:

ISOCANDELA DIAGRAM

Test:U:24.00V I:0.4083A P:9.799W PF:1.000 Freq:0Hz Lamp Flux:612.116x1 lm		
NAME: SF16-24V-3528-144-4500K-80	TYPE:	WEIGHT:
SPEC.:	DIM.: Length=1m	SERIAL No.:
MFR.: OLympia lighting	SUR.:	Shielding Angle:

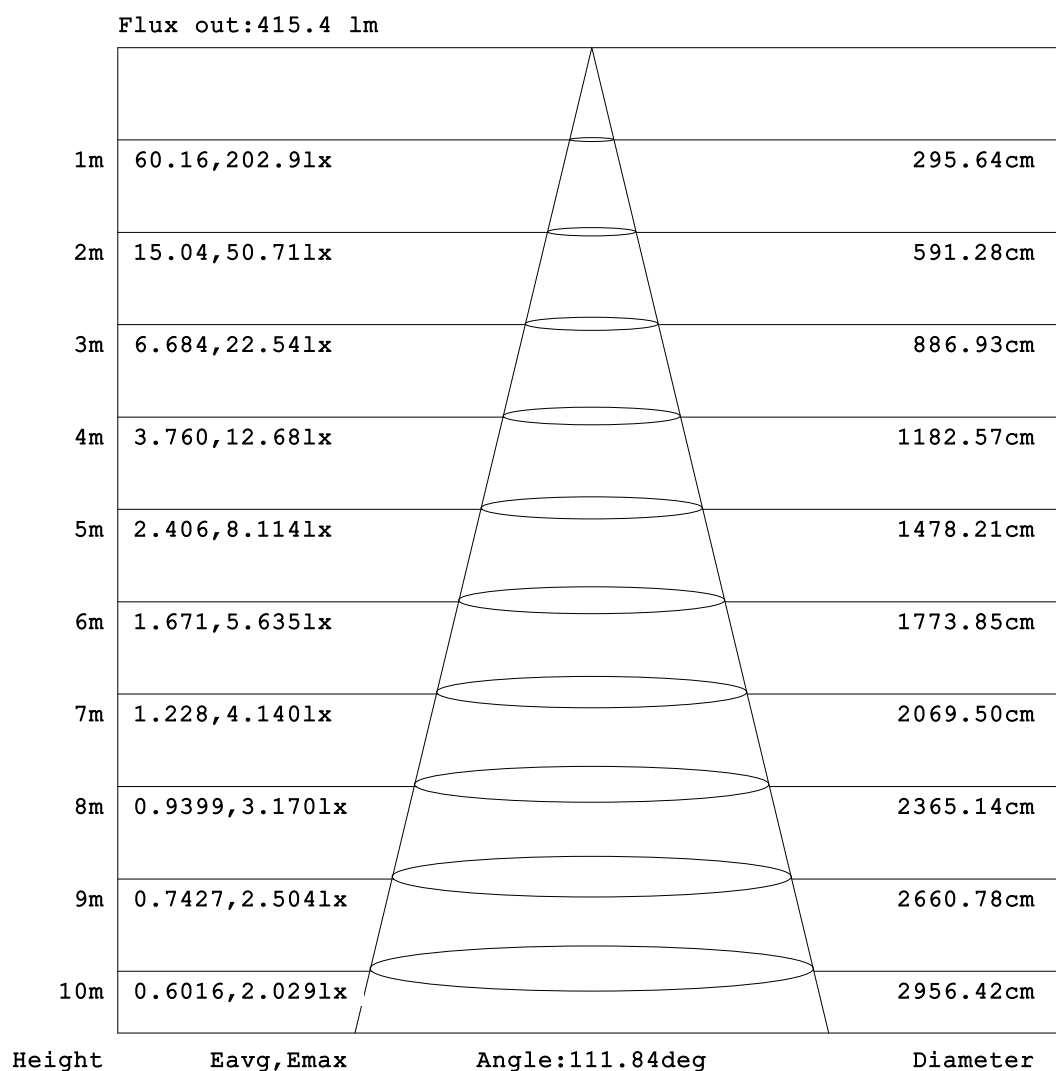


C Range: 0 - 360DEG
C Interval: 30.0DEG
Test Speed: HIGH
Temperature:25.3℃
Operators:
Test Date:2025-02-15

γ Range: 0 - 180DEG
γ Interval: 1.0DEG
Test System:EVERFINE GO-2000B_V1 SYSTEM V2.00.488
Humidity:65.0%
Test Distance:6.360m [K=1.0000]
Remarks:

AAI Figure

Test:U:24.00V I:0.4083A P:9.799W PF:1.000 Freq:0Hz Lamp Flux:612.116x1 lm		
NAME: SF16-24V-3528-144-4500K-80	TYPE:	WEIGHT:
SPEC.:	DIM.: Length=1m	SERIAL No.:
MFR.: OLympia lighting	SUR.:	Shielding Angle:



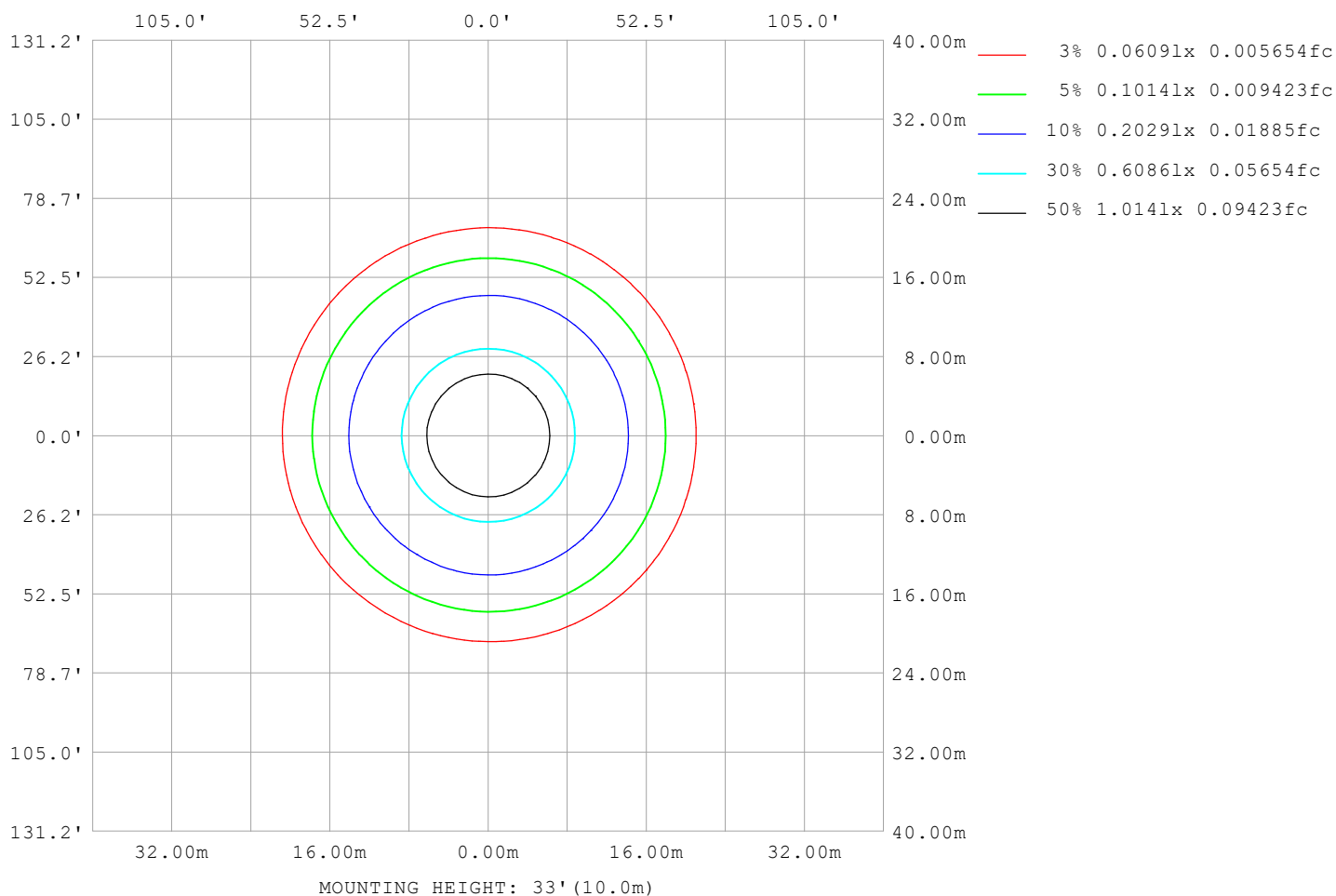
Note:The Curves indicate the illuminated area and the average illumination when the luminaire is at different distance.

C Range: 0 - 360DEG
C Interval: 30.0DEG
Test Speed: HIGH
Temperature:25.3℃
Operators:
Test Date:2025-02-15

γ Range: 0 - 180DEG
γ Interval: 1.0DEG
Test System:EVERFINE GO-2000B_V1 SYSTEM V2.00.488
Humidity:65.0%
Test Distance:6.360m [K=1.0000]
Remarks:

ISOLUX DIAGRAM

Test:U:24.00V I:0.4083A P:9.799W PF:1.000 Freq:0Hz Lamp Flux:612.116x1 lm		
NAME: SF16-24V-3528-144-4500K-80	TYPE:	WEIGHT:
SPEC.:	DIM.: Length=1m	SERIAL No.:
MFR.: OLympia lighting	SUR.:	Shielding Angle:



C Range: 0 - 360DEG
C Interval: 30.0DEG
Test Speed: HIGH
Temperature: 25.3°C
Operators:
Test Date: 2025-02-15

γ Range: 0 - 180DEG
γ Interval: 1.0DEG
Test System: EVERFINE GO-2000B_V1 SYSTEM V2.00.488
Humidity: 65.0%
Test Distance: 6.360m [K=1.0000]
Remarks:

LED Avg.L Report

Test:U:24.00V I:0.4083A P:9.799W PF:1.000 Freq:0Hz Lamp Flux:612.116x1 lm		
NAME: SF16-24V-3528-144-4500K-80	TYPE:	WEIGHT:
SPEC.:	DIM.: Length=1m	SERIAL No.:
MFR.: OLympia lighting	SUR.:	Shielding Angle:

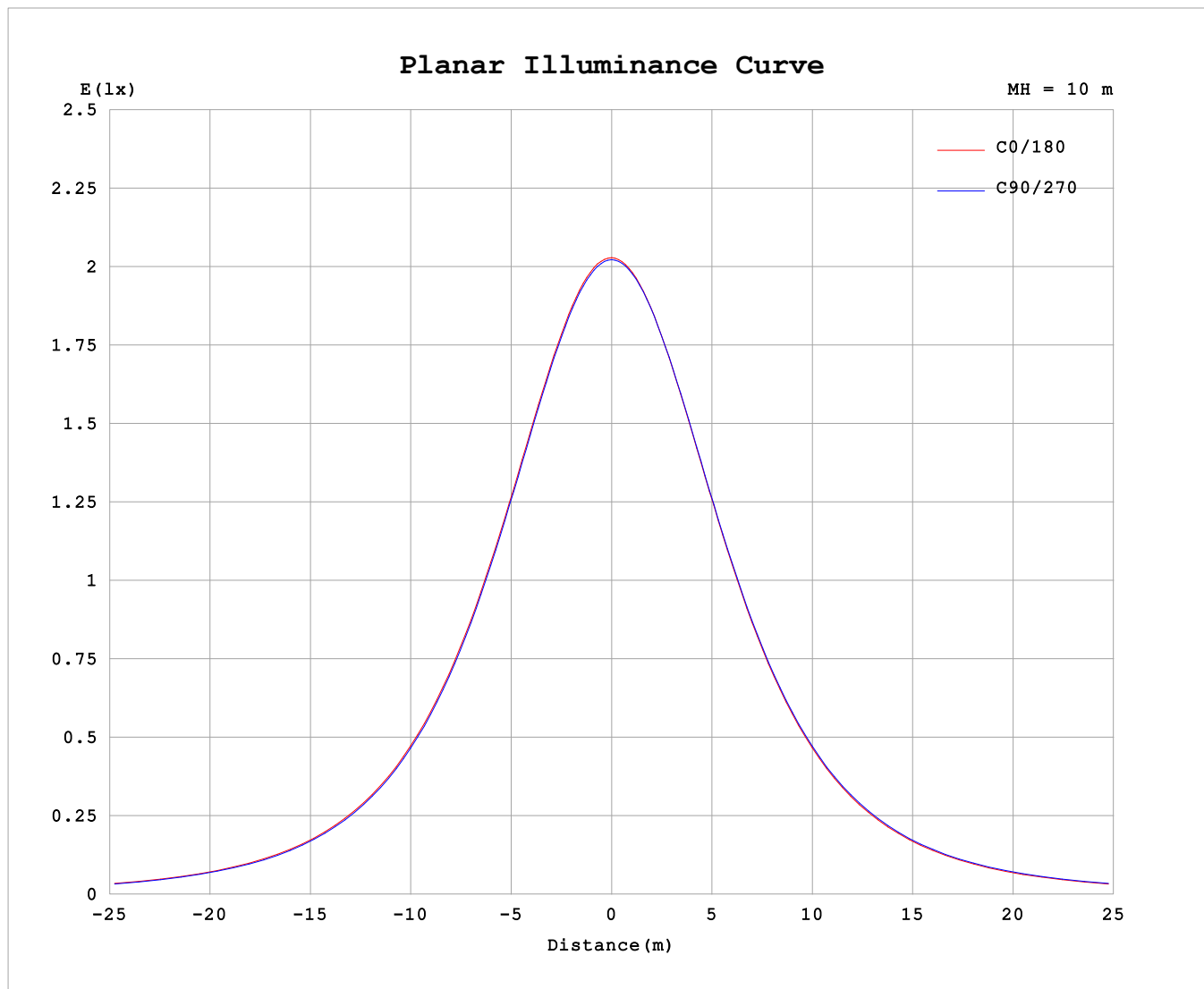
AvgL	cd/m2
L_0~180 (65) av	10609
L_0~180 (75) av	10308
L_0~180 (85) av	10982
L_90~270 (65) av	10659
L_90~270 (75) av	10398
L_90~270 (85) av	10759
L_45 (65) av	10629
L_45 (75) av	10367
L_45 (85) av	10898

Standard: GB/T 29293-2012

C Range: 0 - 360DEG
C Interval: 30.0DEG
Test Speed: HIGH
Temperature:25.3℃
Operators:
Test Date:2025-02-15

γ Range: 0 - 180DEG
γ Interval: 1.0DEG
Test System:EVERFINE GO-2000B_V1 SYSTEM V2.00.488
Humidity:65.0%
Test Distance:6.360m [K=1.0000]
Remarks:

Planar Illuminance Curve



C Range: 0 - 360DEG
C Interval: 30.0DEG
Test Speed: HIGH
Temperature: 25.3 °C
Operators:
Test Date: 2025-02-15

γ Range: 0 - 180DEG
 γ Interval: 1.0DEG
Test System: EVERFINE GO-2000B_V1 SYSTEM V2.00.488
Humidity: 65.0%
Test Distance: 6.360m [K=1.0000]
Remarks:

LUMINOUS DISTRIBUTION INTENSITY DATA

Test:U:24.00V I:0.4083A P:9.799W PF:1.000 Freq:0Hz Lamp Flux:612.116x1 lm		
NAME: SF16-24V-3528-144-4500K-80	TYPE:	WEIGHT:
SPEC.:	DIM.: Length=1m	SERIAL No.:
MFR.: OLYMPIA lighting	SUR.:	Shielding Angle:

Table--1

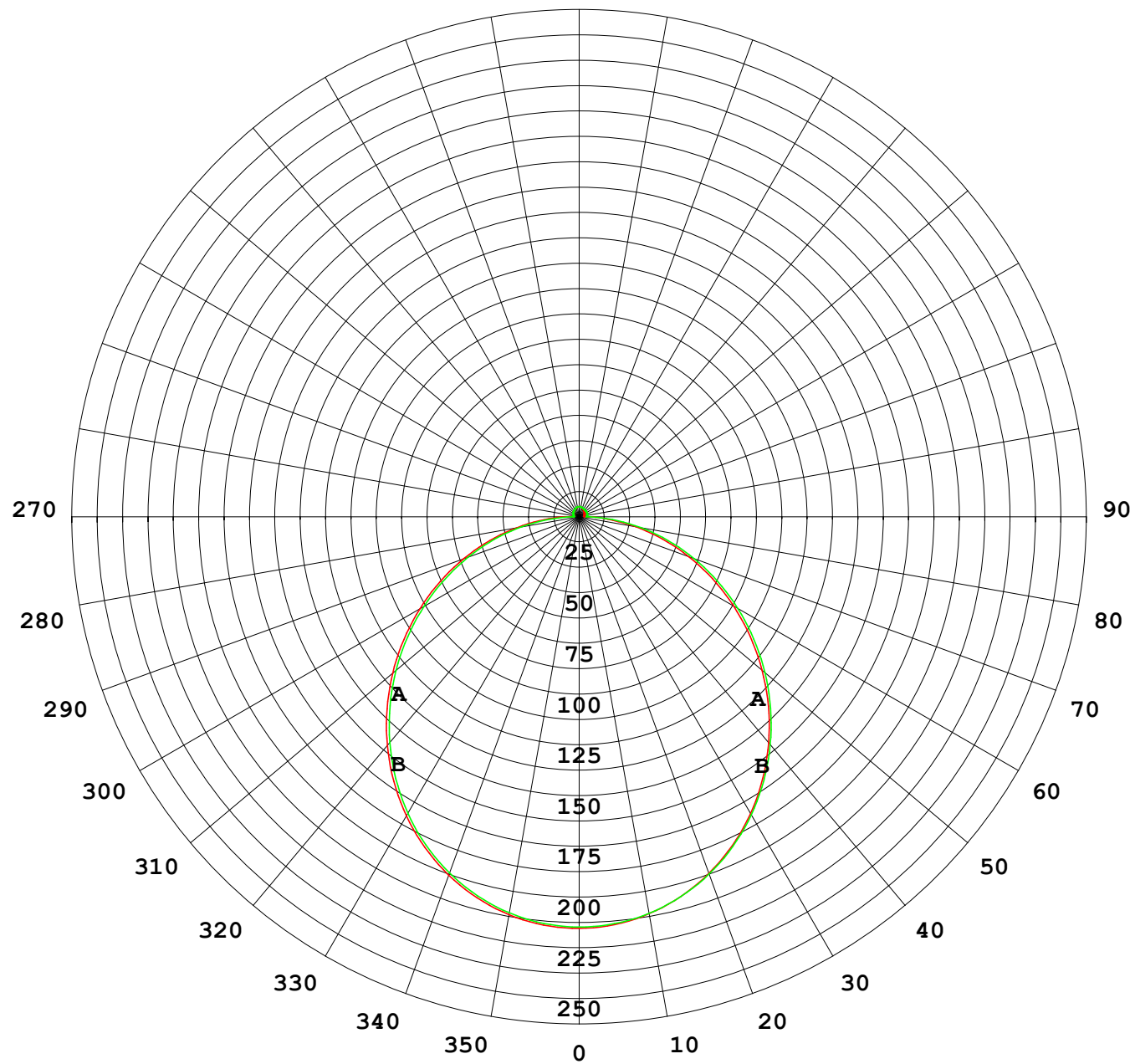
UNIT: cd

C (DEG) γ (DEG)	0	30	60	90	120	150	180	210	240	270	300	330							
0	202	202	202	202	202	202	202	202	202	202	202	202							
5	202	202	201	201	201	201	201	201	201	201	202	202							
10	199	199	199	198	198	198	198	198	198	199	199	199							
15	194	194	194	194	193	193	193	193	194	194	194	194							
20	188	188	187	187	186	186	187	187	187	188	188	188							
25	179	180	179	179	178	178	178	178	179	179	180	180							
30	170	170	169	169	168	168	169	169	169	170	171	170							
35	159	159	158	158	157	157	157	157	158	159	160	159							
40	147	147	146	145	144	144	145	145	146	147	148	147							
45	134	134	133	132	131	131	132	132	133	134	135	134							
50	120	120	119	118	117	117	117	118	119	120	121	120							
55	105	105	104	103	102	102	103	103	104	105	106	106							
60	90.4	90.4	89.5	88.3	87.0	86.8	87.7	88.0	89.4	90.4	91.3	91.1							
65	75.4	75.4	74.5	73.2	71.8	71.7	72.5	72.9	74.3	75.4	76.3	76.1							
70	60.4	60.4	59.5	58.2	56.7	56.6	57.4	57.8	59.2	60.4	61.3	61.1							
75	45.6	45.7	44.8	43.3	42.0	41.8	42.5	42.9	44.3	45.5	46.4	46.3							
80	31.1	31.4	30.3	28.8	27.5	27.5	28.0	28.4	29.7	30.8	31.8	31.8							
85	17.4	17.5	16.3	14.5	12.8	13.7	14.2	14.5	15.5	16.5	17.5	17.7							
90	7.20	7.04	5.16	2.82	3.63	5.09	5.53	5.51	4.97	3.99	5.85	7.16							
95	2.84	3.10	3.24	2.86	2.68	2.61	2.33	2.78	3.47	3.77	3.51	2.99							
100	2.87	3.15	3.29	2.95	2.77	2.73	2.40	2.84	3.56	3.91	3.56	2.97							
105	2.98	3.25	3.38	3.06	2.92	2.88	2.54	2.96	3.67	4.05	3.69	3.05							
110	3.13	3.38	3.49	3.22	3.07	3.05	2.69	3.09	3.80	4.15	3.81	3.16							
115	3.31	3.53	3.62	3.37	3.24	3.20	2.85	3.22	3.90	4.23	3.91	3.30							
120	3.49	3.68	3.75	3.52	3.40	3.38	3.01	3.35	3.99	4.28	3.98	3.44							
125	3.66	3.81	3.87	3.69	3.57	3.55	3.18	3.49	4.07	4.32	4.05	3.57							
130	3.82	3.96	3.99	3.85	3.72	3.71	3.35	3.64	4.15	4.35	4.11	3.69							
135	3.97	4.09	4.10	4.00	3.87	3.88	3.53	3.78	4.22	4.38	4.18	3.70							
140	4.12	4.22	4.22	4.15	4.05	4.04	3.71	3.92	4.31	4.41	4.25	3.83							
145	4.27	4.34	4.34	4.32	4.23	4.22	3.91	4.07	4.39	4.46	4.31	3.95							
150	4.42	4.46	4.47	4.48	4.41	4.39	4.11	4.23	4.49	4.56	4.38	4.08							
155	4.55	4.59	4.59	4.63	4.58	4.57	4.30	4.39	4.60	4.64	4.57	4.22							
160	4.70	4.72	4.73	4.78	4.74	4.74	4.50	4.55	4.71	4.73	4.68	4.36							
165	4.83	4.84	4.84	4.91	4.87	4.87	4.68	4.71	4.83	4.83	4.79	4.51							
170	4.91	4.95	4.95	5.01	4.98	4.98	4.84	4.86	4.93	4.92	4.90	4.83							
175	4.99	5.02	5.03	5.09	5.05	5.05	4.96	4.96	5.03	5.02	5.01	4.96							
180	5.02	5.05	5.08	5.10	5.08	5.07	5.02	5.04	5.08	5.10	5.09	5.05							

C Range: 0 - 360DEG
C Interval: 30.0DEG
Test Speed: HIGH
Temperature:25.3℃
Operators:
Test Date:2025-02-15

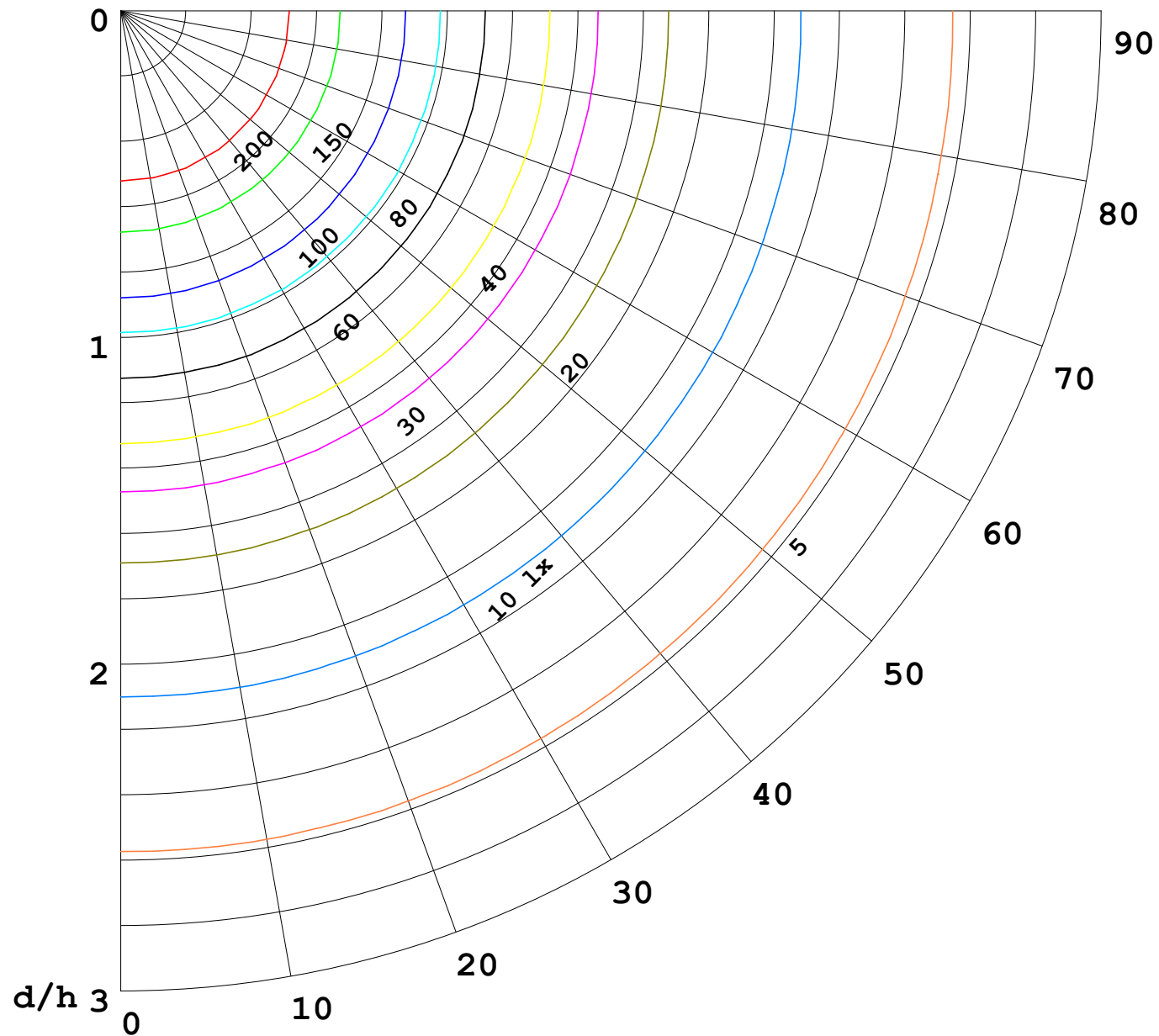
γ Range: 0 - 180DEG
γ Interval: 1.0DEG
Test System:EVERFINE GO-2000B_V1 SYSTEM V2.00.488
Humidity:65.0%
Test Distance:6.360m [K=1.0000]
Remarks:

I (cd)



1000 lm

$\kappa = 1$



F = 1000 lm
 K = 0.7
 Hcc = 0.8 m
 Hfc = 0.0 m
 Eave = 100 lx

	Pcc	Pw	Pfc
—————	70	50	30
—————	50	30	20

