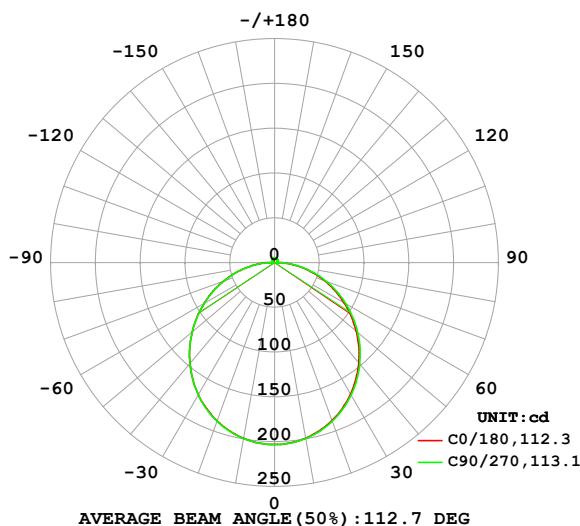


LUMINAIRE PHOTOMETRIC TEST REPORT

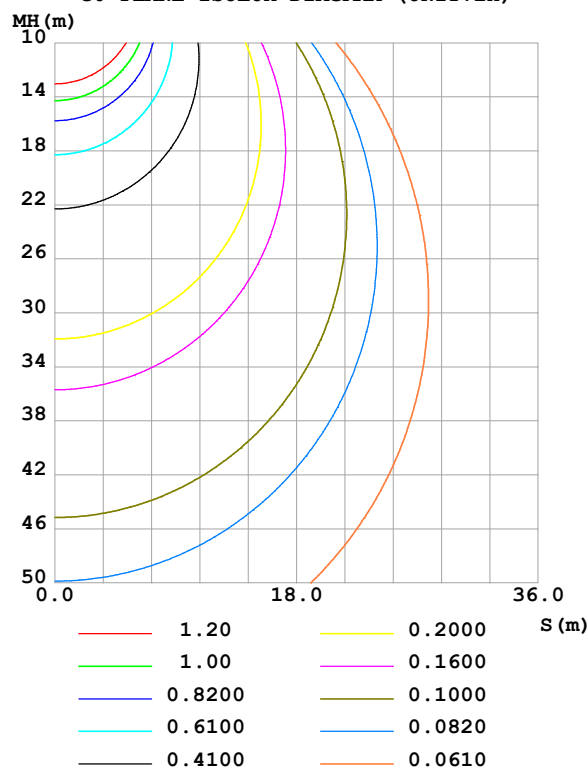
Test:U:24.00V I:0.4411A P:10.59W PF:1.000 Freq:0Hz Lamp Flux:619.363x1 lm		
NAME: SF16-24V-3528-144-2500-80	TYPE:	WEIGHT:
SPEC.:	DIM.: Length=1m	SERIAL No.:
MFR.:	SUR.:	Shielding Angle:

DATA OF LAMP		PHOTOMETRIC DATA Eff: 58.51 lm/W			
MODEL		I _{max} (cd)	203.2	S/MH(C0/180)	1.25
NOMINAL POWER(W)		LOR(%)	100.0	S/MH(C90/270)	1.25
RATED VOLTAGE(V)		TOTAL FLUX(lm)	619.36	η UP,DN(C0-180)	1.9,48.2
NOMINAL FLUX(lm)	619.363	CIE CLASS	DIRECT	η UP,DN(C180-360)	1.9,48.0
LAMPS INSIDE	1	η up (%)	3.7	CIBSE SHR NOM	1.25
TEST VOLTAGE(V)		η down (%)	96.3	CIBSE SHR MAX	1.35

LUMINOUS INTENSITY DISTRIBUTION DIAGRAM



C0 PLANE ISOLUX DIAGRAM (UNIT:lx)



C Range: 0 - 360DEG
C Interval: 22.5DEG
Test Speed: HIGH
Temperature:25.3℃
Operators:Cloud
Test Date:2024-10-31

γ Range: 0 - 180DEG
γ Interval: 1.0DEG
Test System:EVERFINE GO-2000B_V1 SYSTEM V2.00.488
Humidity:65.0%
Test Distance:6.360m [K=1.0000]
Remarks:

ZONAL FLUX DIAGRAM

ZONAL FLUX DIAGRAM:

γ	C0	C45	C90	C135	C180	C225	C270	C315	γ	Φ zone	Φ total	%lum, lamp
10	199.2	199.5	199.5	199.4	199.4	199.4	199.5	199.5	0- 10	19.21	19.21	3.1,3.1
20	187.7	188.3	188.5	188.3	188.1	188.3	188.4	188.4	10- 20	54.94	74.15	12,12
30	169.6	170.6	170.9	170.7	170.4	170.7	170.6	170.6	20- 30	83.02	157.2	25.4,25.4
40	146.2	147.4	147.9	147.6	147.2	147.5	147.3	147.3	30- 40	99.78	256.9	41.5,41.5
50	119.1	120.4	121.1	120.7	120.2	120.3	120.1	120.0	40- 50	103.5	360.4	58.2,58.2
60	89.49	90.84	91.87	91.21	90.80	90.79	90.69	90.43	50- 60	94.49	454.9	73.5,73.5
70	59.40	60.56	61.47	60.95	60.67	60.52	60.40	60.09	60- 70	74.91	529.8	85.5,85.5
80	29.89	30.83	31.33	31.14	31.09	30.80	30.54	30.33	70- 80	48.08	577.9	93.3,93.3
90	6.149	5.429	3.152	5.604	6.729	5.592	3.134	5.335	80- 90	18.28	596.2	96.3,96.3
100	2.775	2.855	2.940	2.958	2.761	3.204	3.016	3.071	90-100	3.581	599.8	96.8,96.8
110	3.151	3.192	3.284	3.215	2.899	3.343	3.317	3.259	100-110	3.245	603.0	97.4,97.4
120	3.522	3.449	3.582	3.588	3.195	3.588	3.626	3.326	110-120	3.316	606.3	97.9,97.9
130	3.873	3.729	3.859	3.927	3.555	3.859	3.929	3.492	120-130	3.264	609.6	98.4,98.4
140	4.184	4.029	4.131	4.254	3.911	4.162	4.226	4.104	130-140	3.065	612.7	98.9,98.9
150	4.489	4.323	4.557	4.583	4.285	4.471	4.527	4.416	140-150	2.684	615.4	99.4,99.4
160	4.785	4.796	4.867	4.893	4.659	4.782	4.836	4.757	150-160	2.133	617.5	99.7,99.7
170	4.863	5.047	5.119	5.115	4.803	5.053	5.096	5.038	160-170	1.391	618.9	99.9,99.9
180	4.966	5.177	5.234	5.214	4.972	5.186	5.237	5.220	170-180	0.4867	619.4	100,100
DEG	LUMINOUS INTENSITY:cd									UNIT:lm		

Conical surface Flux(90deg): 309.06 lm

%lum = 49.9%

%lamp = 49.9%

Conical surface Flux(130deg): 495.38 lm

%lum = 80.0%

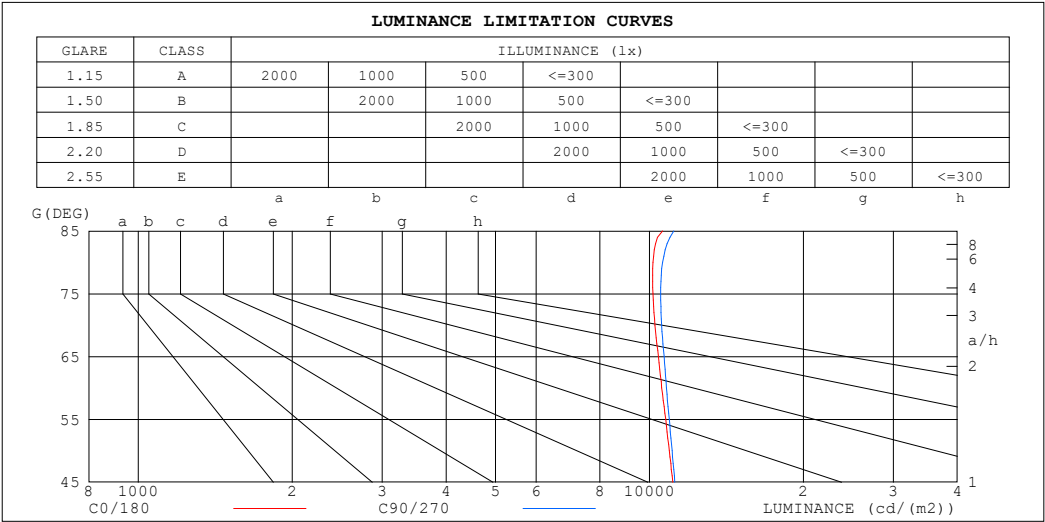
%lamp = 80.0%

C Range: 0 - 360DEG
 C Interval: 22.5DEG
 Test Speed: HIGH
 Temperature:25.3℃
 Operators:Cloud
 Test Date:2024-10-31

γ Range: 0 - 180DEG
 γ Interval: 1.0DEG
 Test System:EVERFINE GO-2000B_V1 SYSTEM V2.00.488
 Humidity:65.0%
 Test Distance:6.360m [K=1.0000]
 Remarks:

LUMINANCE LIMITATION CURVES

Test:U:24.00V I:0.4411A P:10.59W PF:1.000 Freq:0Hz Lamp Flux:619.363x1 lm		
NAME: SF16-24V-3528-144-2500-80	TYPE:	WEIGHT:
SPEC.:	DIM.: Length=1m	SERIAL No.:
MFR.:	SUR.:	Shielding Angle:



LUMINANCE cd/(m2)		
G (DEG)	C0/180	C90/270
85	10611	11161
80	10162	10602
75	10154	10515
70	10253	10563
65	10406	10680
60	10566	10799
55	10754	10931
50	10935	11070
45	11102	11209

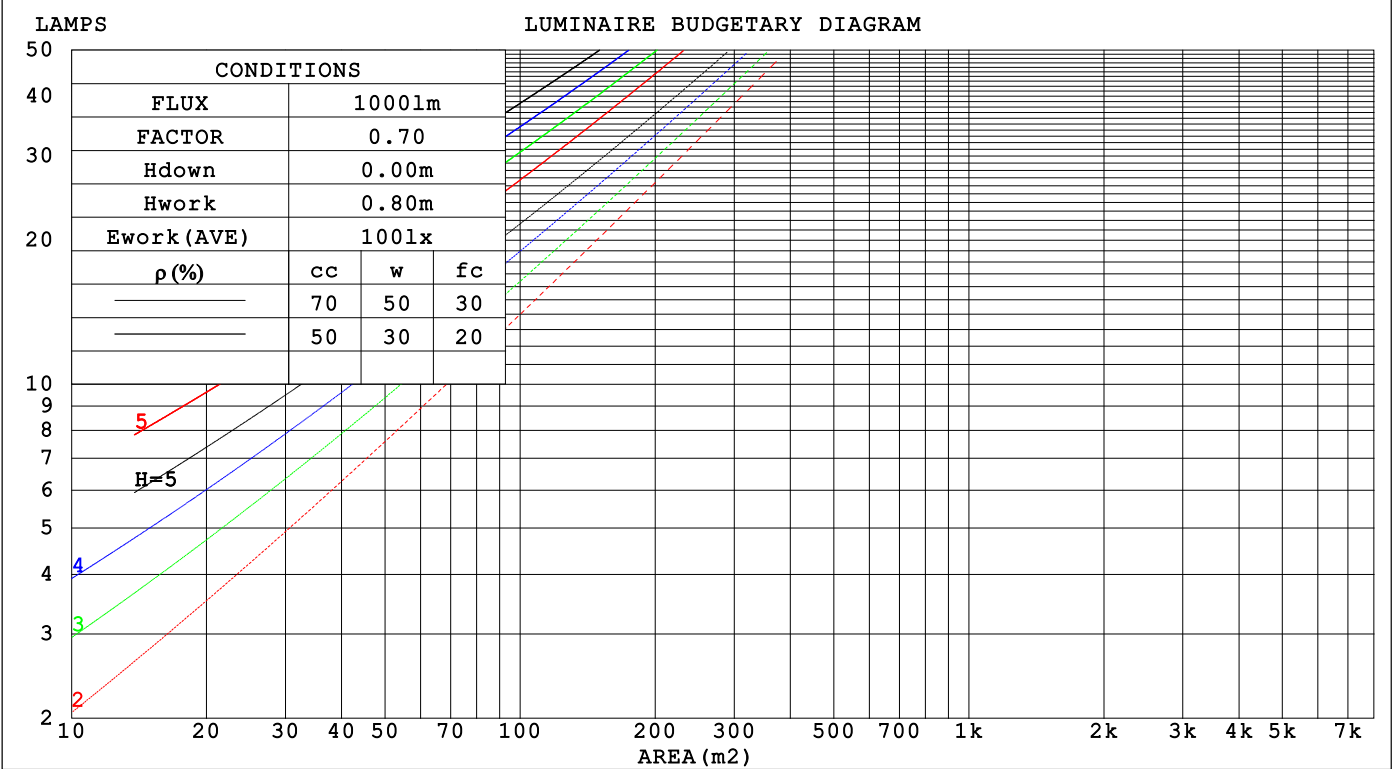
C Range: 0 - 360DEG
C Interval: 22.5DEG
Test Speed: HIGH
Temperature:25.3℃
Operators:Cloud
Test Date:2024-10-31

γ Range: 0 - 180DEG
γ Interval: 1.0DEG
Test System:EVERFINE GO-2000B_V1 SYSTEM V2.00.488
Humidity:65.0%
Test Distance:6.360m [K=1.0000]
Remarks:

CU AND LUMINAIRE BUDGETARY ESTIMATE DIAGRAM

Test:U:24.00V I:0.4411A P:10.59W PF:1.000 Freq:0Hz		
Lamp Flux:619.363x1 lm		
NAME: SF16-24V-3528-144-2500-80	TYPE:	WEIGHT:
SPEC.:	DIM.: Length=1m	SERIAL No.:
MFR.:	SUR.:	Shielding Angle:

pcc	80%			70%			50%			30%			10%			0
pw	50%	30%	10%	50%	30%	10%	50%	30%	10%	50%	30%	10%	50%	30%	10%	0
pfc	20%			20%			20%			20%			20%			0
RCR	RCR:Room Cavity Ratio			Coefficients of Utilization(CU)												
0.0	1.18	1.18	1.18	1.15	1.15	1.15	1.09	1.09	1.09	1.04	1.04	1.04	.99	.99	.99	.96
1.0	1.02	.98	.94	.00	.95	.92	.95	.91	.88	.90	.87	.85	.86	.84	.82	.79
2.0	.89	.82	.76	.86	.80	.74	.82	.77	.72	.78	.74	.70	.75	.71	.68	.65
3.0	.78	.69	.63	.76	.68	.62	.72	.66	.60	.69	.63	.59	.66	.61	.57	.55
4.0	.69	.60	.53	.67	.59	.52	.64	.57	.51	.61	.55	.50	.59	.53	.49	.47
5.0	.61	.52	.45	.60	.51	.45	.57	.50	.44	.55	.48	.43	.53	.47	.42	.40
6.0	.55	.46	.39	.54	.45	.39	.52	.44	.39	.50	.43	.38	.48	.42	.37	.35
7.0	.50	.41	.35	.49	.40	.35	.47	.39	.34	.45	.39	.34	.44	.38	.33	.31
8.0	.45	.37	.31	.45	.36	.31	.43	.36	.30	.41	.35	.30	.40	.34	.30	.28
9.0	.42	.33	.28	.41	.33	.28	.40	.32	.27	.38	.32	.27	.37	.31	.27	.25
10.0	.38	.31	.25	.38	.30	.25	.37	.30	.25	.35	.29	.24	.34	.28	.24	.22



C Range: 0 - 360DEG
C Interval: 22.5DEG
Test Speed: HIGH
Temperature:25.3℃
Operators:Cloud
Test Date:2024-10-31

γ Range: 0 - 180DEG
γ Interval: 1.0DEG
Test System:EVERFINE GO-2000B_V1 SYSTEM V2.00.488
Humidity:65.0%
Test Distance:6.360m [K=1.0000]
Remarks:

WEC AND CCEC

Test:U:24.00V I:0.4411A P:10.59W PF:1.000 Freq:0Hz Lamp Flux:619.363x1 lm		
NAME: SF16-24V-3528-144-2500-80	TYPE:	WEIGHT:
SPEC.:	DIM.: Length=1m	SERIAL No.:
MFR.:	SUR.:	Shielding Angle:

pcc	80%			70%			50%			30%			10%			0														
pw	50%	30%	10%	50%	30%	10%	50%	30%	10%	50%	30%	10%	50%	30%	10%	0														
pfc	20%			20%			20%			20%			20%			0														
RCR	RCR:Room Cavity Ratio															Wall Exitance Coefficients(WEC)														
0.0																														
1.0	.325	.185	.059	.317	.181	.057	.302	.173	.055	.287	.166	.053	.274	.159	.051															
2.0	.300	.165	.050	.293	.161	.050	.279	.155	.048	.267	.150	.047	.255	.144	.045															
3.0	.275	.147	.044	.269	.144	.043	.257	.139	.042	.245	.134	.041	.235	.130	.040															
4.0	.253	.131	.039	.247	.129	.038	.236	.125	.037	.226	.121	.037	.216	.118	.036															
5.0	.233	.119	.034	.228	.117	.034	.218	.113	.033	.209	.110	.033	.200	.107	.032															
6.0	.215	.108	.031	.211	.106	.031	.202	.103	.030	.194	.101	.030	.186	.098	.029															
7.0	.200	.099	.028	.196	.098	.028	.188	.095	.027	.180	.092	.027	.173	.090	.026															
8.0	.186	.091	.026	.183	.090	.025	.176	.088	.025	.169	.086	.025	.162	.083	.024															
9.0	.174	.084	.024	.171	.083	.023	.165	.081	.023	.159	.079	.023	.153	.078	.022															
10.0	.164	.079	.022	.161	.078	.022	.155	.076	.021	.149	.074	.021	.144	.072	.021															

pcc	80%			70%			50%			30%			10%			0
pw	50%	30%	10%	50%	30%	10%	50%	30%	10%	50%	30%	10%	50%	30%	10%	0
pfc	20%			20%			20%			20%			20%			0
RCR	RCR:Room Cavity Ratio						Ceiling Cavity Exitance Coefficients (CCEC)									
0.0	.219	.219	.219	.187	.187	.187	.128	.128	.128	.073	.073	.073	.023	.023	.023	
1.0	.210	.185	.162	.180	.159	.139	.123	.109	.096	.071	.063	.056	.023	.020	.018	
2.0	.202	.161	.126	.173	.138	.109	.119	.096	.076	.068	.056	.044	.022	.018	.014	
3.0	.195	.143	.103	.167	.124	.089	.115	.086	.062	.066	.050	.037	.021	.016	.012	
4.0	.187	.130	.087	.160	.113	.076	.110	.078	.053	.064	.046	.031	.021	.015	.010	
5.0	.179	.120	.076	.154	.104	.066	.106	.073	.047	.061	.043	.028	.020	.014	.009	
6.0	.172	.112	.068	.148	.097	.059	.102	.068	.042	.059	.040	.025	.019	.013	.008	
7.0	.165	.105	.063	.142	.091	.054	.098	.064	.039	.057	.038	.023	.018	.012	.008	
8.0	.159	.099	.058	.137	.086	.051	.095	.060	.036	.055	.036	.021	.018	.012	.007	
9.0	.153	.094	.055	.132	.082	.048	.091	.057	.034	.053	.034	.020	.017	.011	.007	
10.0	.147	.090	.052	.127	.078	.045	.088	.055	.032	.051	.032	.019	.017	.011	.006	

C Range: 0 - 360DEG
C Interval: 22.5DEG
Test Speed: HIGH
Temperature:25.3℃
Operators:Cloud
Test Date:2024-10-31

γ Range: 0 - 180DEG
γ Interval: 1.0DEG
Test System:EVERFINE GO-2000B_V1 SYSTEM V2.00.488
Humidity:65.0%
Test Distance:6.360m [K=1.0000]
Remarks:

UGR(Unified Glare Rating) Table

Test:U:24.00V I:0.4411A P:10.59W PF:1.000 Freq:0Hz Lamp Flux:619.363x1 lm											
NAME: SF16-24V-3528-144-2500-80					TYPE:			WEIGHT:			
SPEC.:					DIM.: Length=1m			SERIAL No.:			
MFR.:					SUR.:			Shielding Angle:			
ceiling/cavity	0.7	0.7	0.5	0.5	0.3	0.7	0.7	0.5	0.5	0.3	
walls	0.5	0.3	0.5	0.3	0.3	0.5	0.3	0.5	0.3	0.3	
working plane	0.2	0.2	0.2	0.2	0.2	0.2	0.2	0.2	0.2	0.2	
Room dimensions		Viewed crosswise					Viewed endwise				
x = 2H y = 2H	2H	22.6	24.0	22.9	24.3	24.6	22.6	24.1	23.0	24.4	24.7
	3H	24.2	25.6	24.6	25.9	26.2	24.3	25.7	24.7	26.0	26.3
	4H	24.9	26.2	25.3	26.6	26.9	25.1	26.4	25.4	26.7	27.0
	6H	25.5	26.8	25.9	27.1	27.5	25.7	26.9	26.1	27.3	27.6
	8H	25.8	27.0	26.2	27.3	27.7	26.0	27.1	26.4	27.5	27.9
	12H	26.0	27.1	26.4	27.5	27.9	26.1	27.3	26.6	27.7	28.0
4H	2H	23.2	24.5	23.6	24.8	25.2	23.3	24.6	23.6	24.9	25.2
	3H	25.1	26.2	25.5	26.6	26.9	25.2	26.3	25.6	26.7	27.0
	4H	25.9	27.0	26.4	27.4	27.8	26.0	27.1	26.5	27.5	27.9
	6H	26.7	27.6	27.1	28.0	28.5	26.8	27.8	27.3	28.2	28.6
	8H	27.0	27.9	27.5	28.3	28.8	27.1	28.0	27.6	28.5	28.9
	12H	27.2	28.0	27.7	28.5	29.0	27.4	28.2	27.9	28.7	29.2
8H	4H	26.3	27.1	26.7	27.6	28.0	26.4	27.2	26.8	27.7	28.1
	6H	27.2	27.9	27.7	28.4	28.9	27.3	28.1	27.8	28.5	29.0
	8H	27.6	28.3	28.2	28.8	29.3	27.8	28.4	28.3	28.9	29.4
	12H	28.0	28.6	28.5	29.1	29.6	28.2	28.7	28.7	29.2	29.8
12H	4H	26.3	27.1	26.8	27.6	28.0	26.4	27.2	26.9	27.7	28.1
	6H	27.3	28.0	27.8	28.5	29.0	27.4	28.1	28.0	28.6	29.1
	8H	27.8	28.4	28.3	28.9	29.4	27.9	28.5	28.5	29.0	29.6
Variations with the observer position at spacings(CIE Pub.117):											
S = 1.0H		+ 0.1 / - 0.2					+ 0.1 / - 0.2				
1.5H		+ 0.2 / - 0.3					+ 0.2 / - 0.3				
2.0H		+ 0.1 / - 0.3					+ 0.1 / - 0.3				

CIE Pub.117, 619.4 lm Total Lamp Luminous Flux Correct (8log(F/F0) = -1.7)
Area: 0.017 m2

C Range: 0 - 360DEG
C Interval: 22.5DEG
Test Speed: HIGH
Temperature:25.3℃
Operators:Cloud
Test Date:2024-10-31

γ Range: 0 - 180DEG
γ Interval: 1.0DEG
Test System:EVERFINE GO-2000B_V1 SYSTEM V2.00.488
Humidity:65.0%
Test Distance:6.360m [K=1.0000]
Remarks:

UTILIZATION FACTORS TABLE

Test:U:24.00V I:0.4411A P:10.59W PF:1.000 Freq:0Hz Lamp Flux:619.363x1 lm		
NAME: SF16-24V-3528-144-2500-80	TYPE:	WEIGHT:
SPEC.:	DIM.: Length=1m	SERIAL No.:
MFR.:	SUR.:	Shielding Angle:

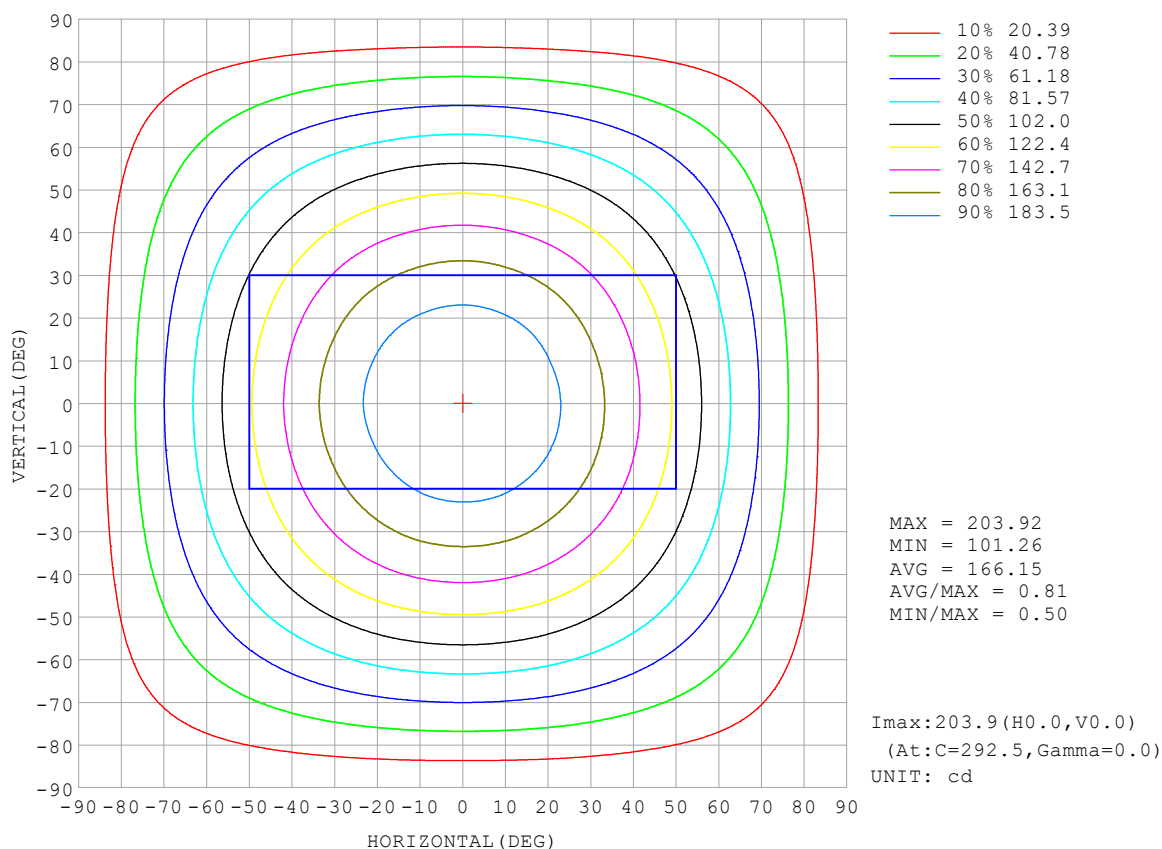
REFLECTANCE										
Ceiling	0.8	0.8	0.8	0.7	0.7	0.7	0.5	0.5	0.5	0
Walls	0.7	0.5	0.3	0.7	0.5	0.3	0.7	0.5	0.3	0
Working plane	0.2	0.2	0.2	0.2	0.2	0.2	0.2	0.2	0.2	0
ROOM INDEX	UTILIZATION FACTORS (PERCENT) $k(RI) \times RCR = 5$									
$k = 0.60$	56	44	37	55	44	37	53	43	37	30
0.80	66	54	46	64	53	46	62	52	45	38
1.00	74	62	55	72	62	54	70	63	54	46
1.25	81	70	63	79	69	62	76	67	61	53
1.50	86	76	68	84	74	68	80	72	66	58
2.00	93	84	77	91	82	76	87	80	74	65
2.50	97	89	82	94	87	81	90	84	79	70
3.00	100	93	87	98	91	86	93	88	83	74
4.00	104	98	93	102	96	92	97	92	88	78
5.00	107	102	97	104	99	95	99	95	92	81
ROOM INDEX	UF (total)									Direct
According to DIN EN 13032-2 2004			Suspended					SHRNOM = 1.25		

C Range: 0 - 360DEG
 C Interval: 22.5DEG
 Test Speed: HIGH
 Temperature: 25.3°C
 Operators: Cloud
 Test Date: 2024-10-31

γ Range: 0 - 180DEG
 γ Interval: 1.0DEG
 Test System: EVERFINE GO-2000B_V1 SYSTEM V2.00.488
 Humidity: 65.0%
 Test Distance: 6.360m [K=1.0000]
 Remarks:

ISOCANDELA DIAGRAM

Test:U:24.00V I:0.4411A P:10.59W PF:1.000 Freq:0Hz Lamp Flux:619.363x1 lm		
NAME: SF16-24V-3528-144-2500-80	TYPE:	WEIGHT:
SPEC.:	DIM.: Length=1m	SERIAL No.:
MFR.:	SUR.:	Shielding Angle:

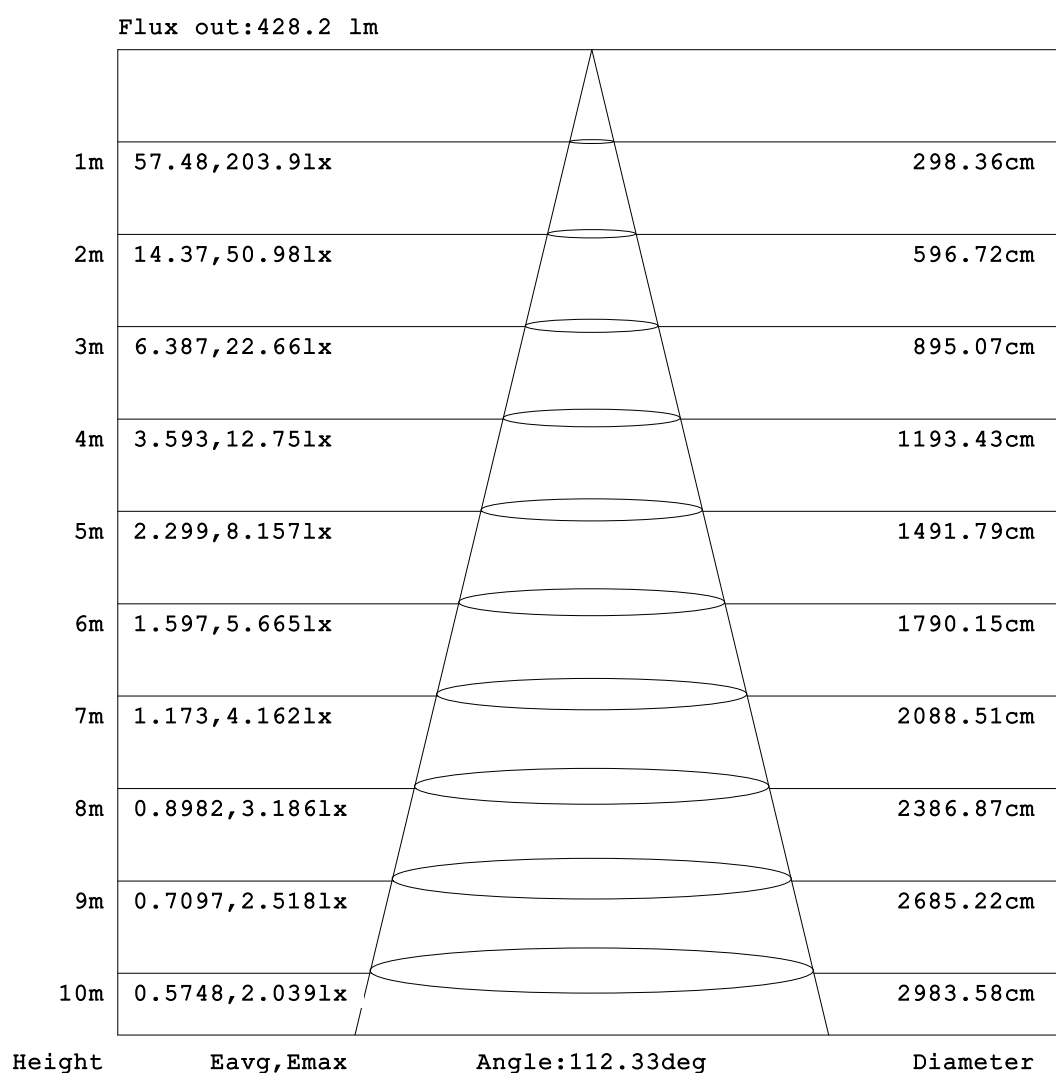


C Range: 0 - 360DEG
C Interval: 22.5DEG
Test Speed: HIGH
Temperature:25.3℃
Operators:Cloud
Test Date:2024-10-31

γ Range: 0 - 180DEG
γ Interval: 1.0DEG
Test System:EVERFINE GO-2000B_V1 SYSTEM V2.00.488
Humidity:65.0%
Test Distance:6.360m [K=1.0000]
Remarks:

AAI Figure

Test:U:24.00V I:0.4411A P:10.59W PF:1.000 Freq:0Hz Lamp Flux:619.363x1 lm		
NAME: SF16-24V-3528-144-2500-80	TYPE:	WEIGHT:
SPEC.:	DIM.: Length=1m	SERIAL No.:
MFR.:	SUR.:	Shielding Angle:



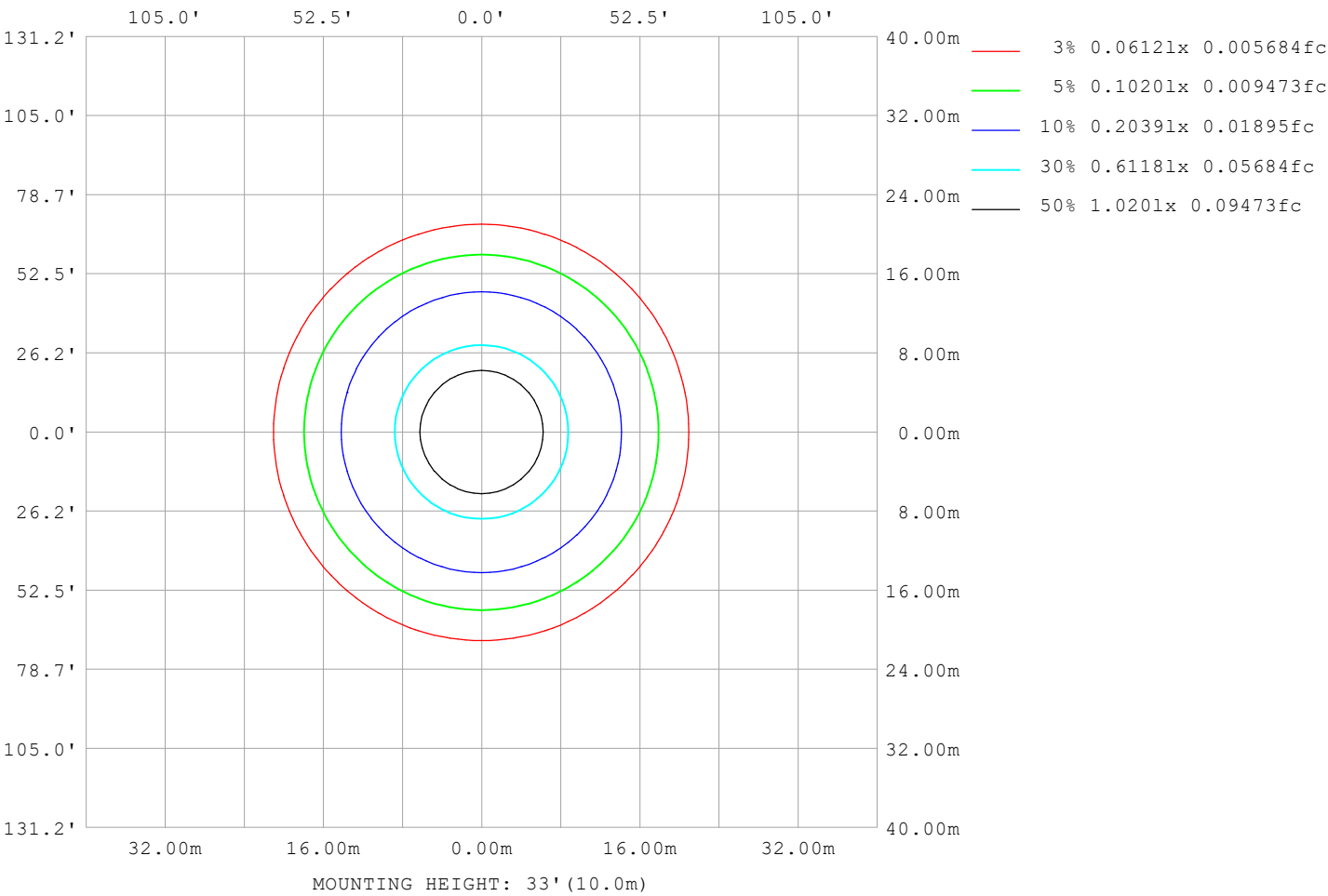
Note:The Curves indicate the illuminated area and the average illumination when the luminaire is at different distance.

C Range: 0 - 360DEG
C Interval: 22.5DEG
Test Speed: HIGH
Temperature:25.3℃
Operators:Cloud
Test Date:2024-10-31

γ Range: 0 - 180DEG
γ Interval: 1.0DEG
Test System:EVERFINE GO-2000B_V1 SYSTEM V2.00.488
Humidity:65.0%
Test Distance:6.360m [K=1.0000]
Remarks:

ISOLUX DIAGRAM

Test:U:24.00V I:0.4411A P:10.59W PF:1.000 Freq:0Hz Lamp Flux:619.363x1 lm		
NAME: SF16-24V-3528-144-2500-80	TYPE:	WEIGHT:
SPEC.:	DIM.: Length=1m	SERIAL No.:
MFR.:	SUR.:	Shielding Angle:



C Range: 0 - 360DEG	γ Range: 0 - 180DEG
C Interval: 22.5DEG	γ Interval: 1.0DEG
Test Speed: HIGH	Test System:EVERFINE GO-2000B_V1 SYSTEM V2.00.488
Temperature:25.3℃	Humidity:65.0%
Operators:Cloud	Test Distance:6.360m [K=1.0000]
Test Date:2024-10-31	Remarks:

LED Avg.L Report

Test:U:24.00V I:0.4411A P:10.59W PF:1.000 Freq:0Hz Lamp Flux:619.363x1 lm		
NAME: SF16-24V-3528-144-2500-80	TYPE:	WEIGHT:
SPEC.:	DIM.: Length=1m	SERIAL No.:
MFR.:	SUR.:	Shielding Angle:

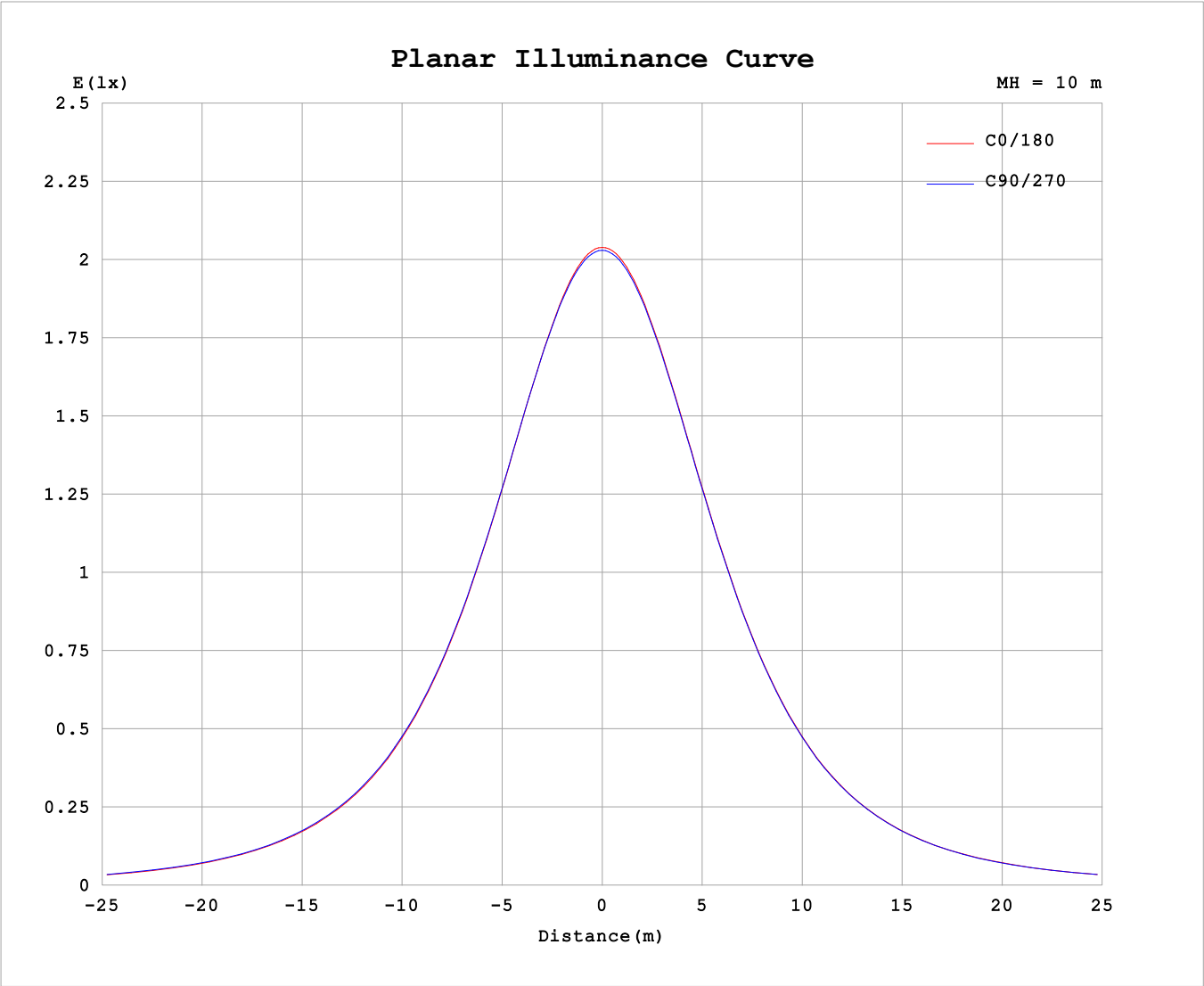
AvgL	cd/m2
L_0~180 (65) av	10458
L_0~180 (75) av	10259
L_0~180 (85) av	11009
L_90~270 (65) av	10605
L_90~270 (75) av	10418
L_90~270 (85) av	10933
L_45 (65) av	10535
L_45 (75) av	10351
L_45 (85) av	10971

Standard: GB/T 29293-2012

C Range: 0 - 360DEG
C Interval: 22.5DEG
Test Speed: HIGH
Temperature:25.3℃
Operators:Cloud
Test Date:2024-10-31

γ Range: 0 - 180DEG
γ Interval: 1.0DEG
Test System:EVERFINE GO-2000B_V1 SYSTEM V2.00.488
Humidity:65.0%
Test Distance:6.360m [K=1.0000]
Remarks:

Planar Illuminance Curve



C Range: 0 - 360DEG	γ Range: 0 - 180DEG
C Interval: 22.5DEG	γ Interval: 1.0DEG
Test Speed: HIGH	Test System:EVERFINE GO-2000B_V1 SYSTEM V2.00.488
Temperature:25.3℃	Humidity:65.0%
Operators:Cloud	Test Distance:6.360m [K=1.0000]
Test Date:2024-10-31	Remarks:

LUMINOUS DISTRIBUTION INTENSITY DATA

Test:U:24.00V I:0.4411A P:10.59W PF:1.000 Freq:0Hz Lamp Flux:619.363x1 lm																	
NAME: SF16-24V-3528-144-2500-80									TYPE:						WEIGHT:		
SPEC.:									DIM.: Length=1m						SERIAL No.:		
MFR.:									SUR.:						Shielding Angle:		

Table--1

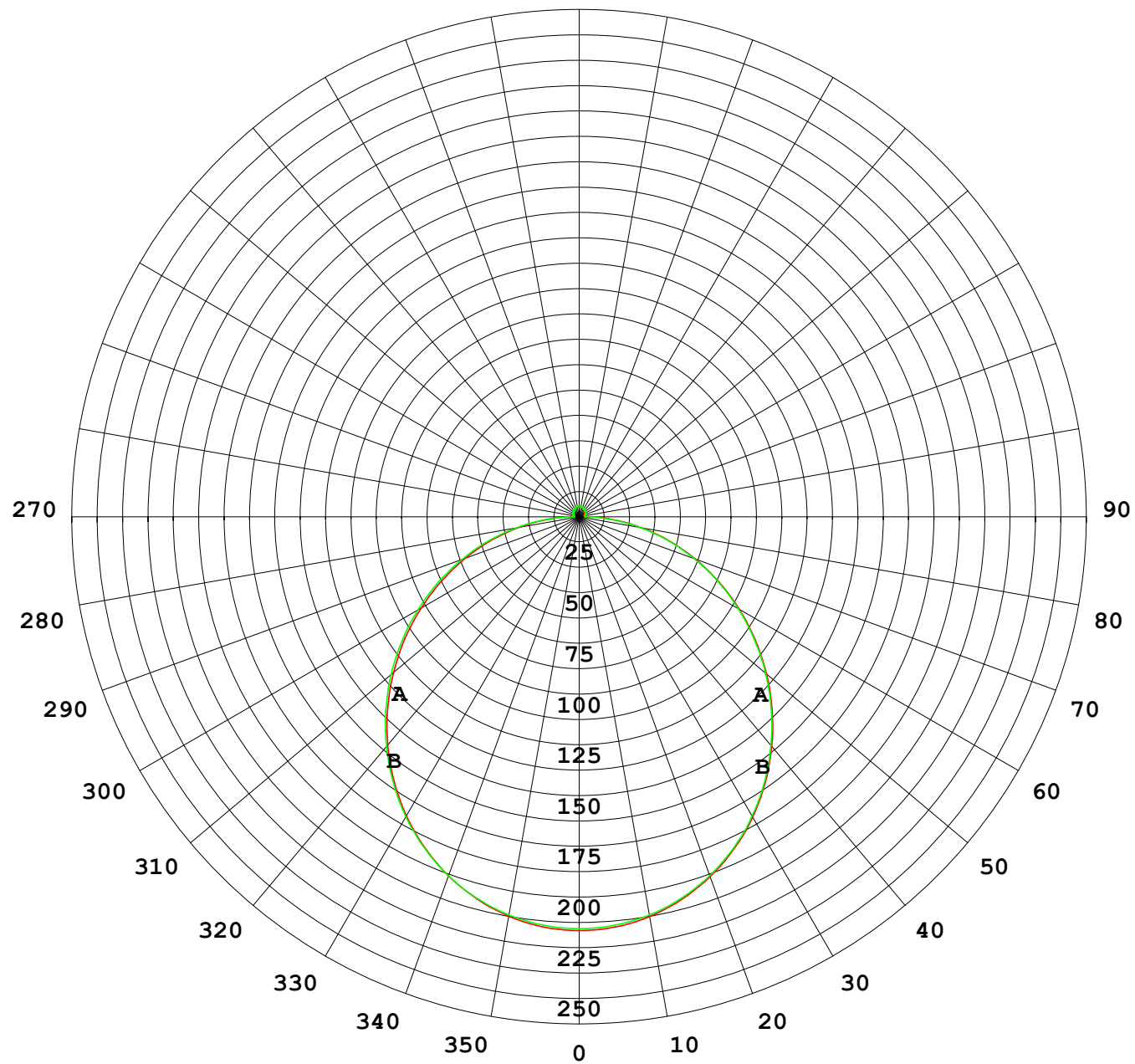
UNIT: cd

γ (DEG)	C (DEG)																
	0	22.5	45	67.5	90	112.5	135	157.5	180	202.5	225	247.5	270	292.5	315	337.5	
0	203	203	203	203	203	203	203	203	203	203	203	203	203	203	203	203	
5	202	202	202	202	202	202	202	202	202	202	202	202	202	202	202	202	
10	199	199	199	200	199	199	199	199	199	199	199	199	199	199	199	199	
15	194	195	195	195	195	195	195	195	195	194	195	195	195	195	195	194	
20	188	188	188	189	189	189	188	188	188	188	188	188	188	188	188	188	
25	179	180	180	181	180	181	180	180	180	180	180	180	180	180	180	180	
30	170	170	171	171	171	171	171	171	170	170	171	170	171	170	171	170	
35	159	159	160	160	160	160	160	160	159	159	160	159	160	159	160	159	
40	146	147	147	148	148	148	148	147	147	147	147	147	147	147	147	147	
45	133	134	134	135	135	135	135	134	134	134	134	134	134	134	134	133	
50	119	120	120	121	121	121	121	120	120	120	120	120	120	120	120	119	
55	104	105	106	107	107	107	106	106	106	106	106	105	106	105	105	105	
60	89.5	90.3	90.8	91.7	91.9	91.8	91.2	91.0	90.8	90.6	90.8	90.5	90.7	90.4	90.4	89.9	
65	74.5	75.2	75.7	76.6	76.8	76.7	76.1	75.9	75.8	75.6	75.7	75.4	75.6	75.3	75.3	74.9	
70	59.4	60.1	60.6	61.3	61.5	61.4	61.0	60.8	60.7	60.5	60.5	60.3	60.4	60.1	60.1	59.8	
75	44.5	45.2	45.6	46.2	46.3	46.3	46.0	45.9	45.8	45.6	45.5	45.3	45.4	45.1	45.1	44.8	
80	29.9	30.5	30.8	31.4	31.3	31.4	31.1	31.2	31.1	30.9	30.8	30.5	30.5	30.3	30.3	30.1	
85	15.7	16.2	16.3	16.6	16.6	16.6	16.5	16.9	17.0	16.6	16.4	15.8	15.8	15.6	15.8	15.7	
90	6.15	6.12	5.43	4.38	3.15	4.36	5.60	6.58	6.73	6.37	5.59	4.23	3.13	4.12	5.34	5.94	
95	2.77	2.76	2.77	2.82	2.85	2.86	3.00	3.07	2.87	3.07	3.23	3.21	3.01	3.12	2.98	2.73	
100	2.77	2.83	2.86	2.88	2.94	2.91	2.96	3.04	2.76	2.98	3.20	3.20	3.02	3.11	3.07	2.75	
105	2.96	3.00	3.02	3.04	3.10	3.10	3.06	3.11	2.80	2.99	3.25	3.29	3.12	3.12	3.17	2.89	
110	3.15	3.19	3.19	3.25	3.28	3.29	3.22	3.24	2.90	3.07	3.34	3.39	3.32	3.14	3.26	3.03	
115	3.34	3.37	3.37	3.38	3.43	3.47	3.41	3.39	3.03	3.18	3.46	3.50	3.49	3.11	3.33	3.19	
120	3.52	3.55	3.45	3.53	3.58	3.64	3.59	3.57	3.20	3.34	3.59	3.63	3.63	3.34	3.33	3.31	
125	3.70	3.72	3.58	3.69	3.72	3.81	3.76	3.75	3.37	3.49	3.72	3.76	3.76	3.69	3.29	3.44	
130	3.87	3.89	3.73	3.83	3.86	3.97	3.93	3.92	3.55	3.65	3.86	3.89	3.93	3.84	3.49	3.50	
135	4.03	4.05	3.88	3.97	3.99	4.13	4.09	4.08	3.74	3.82	4.01	4.04	4.08	3.99	3.90	3.73	
140	4.18	4.01	4.03	4.11	4.13	4.29	4.25	4.25	3.91	3.99	4.16	4.19	4.23	4.17	4.10	3.81	
145	4.33	4.16	4.18	4.25	4.27	4.45	4.42	4.41	4.10	4.16	4.31	4.34	4.38	4.34	4.25	4.12	
150	4.49	4.30	4.32	4.41	4.56	4.62	4.58	4.58	4.29	4.34	4.47	4.51	4.53	4.49	4.42	4.30	
155	4.64	4.46	4.47	4.70	4.71	4.78	4.74	4.74	4.48	4.52	4.64	4.66	4.69	4.64	4.58	4.48	
160	4.78	4.61	4.80	4.86	4.87	4.92	4.89	4.89	4.66	4.68	4.78	4.80	4.84	4.78	4.76	4.65	
165	4.93	4.75	4.93	5.00	5.01	5.06	5.01	5.01	4.82	4.85	4.93	4.95	4.97	4.93	4.90	4.83	
170	4.86	4.94	5.05	5.11	5.12	5.15	5.12	5.12	4.80	4.98	5.05	5.06	5.10	5.05	5.04	4.99	
175	4.92	5.14	5.13	5.20	5.19	5.22	5.18	5.19	4.91	5.09	5.15	5.16	5.20	5.15	5.15	5.11	
180	4.97	5.16	5.18	5.23	5.23	5.24	5.21	5.20	4.97	5.15	5.19	5.22	5.24	5.23	5.22	5.19	

C Range: 0 - 360DEG
C Interval: 22.5DEG
Test Speed: HIGH
Temperature:25.3℃
Operators:Cloud
Test Date:2024-10-31

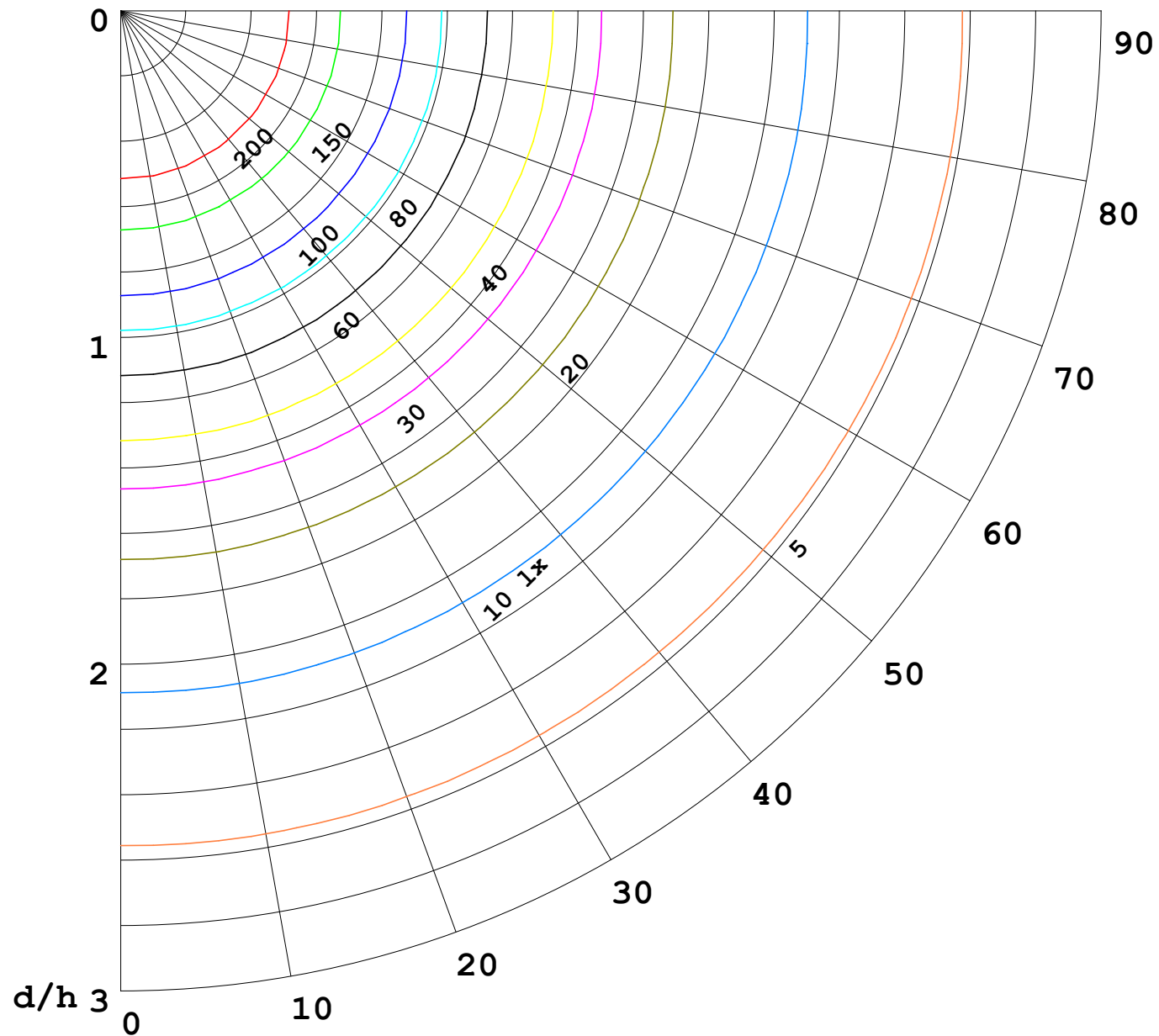
γ Range: 0 - 180DEG
γ Interval: 1.0DEG
Test System:EVERFINE GO-2000B_V1 SYSTEM V2.00.488
Humidity:65.0%
Test Distance:6.360m [K=1.0000]
Remarks:

I (cd)



1000 lm

$\kappa = 1$



F = 1000 lm
 K = 0.7
 Hcc = 0.8 m
 Hfc = 0.0 m
 Eave = 100 lx

	Pcc	Pw	Pfc
—————	70	50	30
—————	50	30	20

