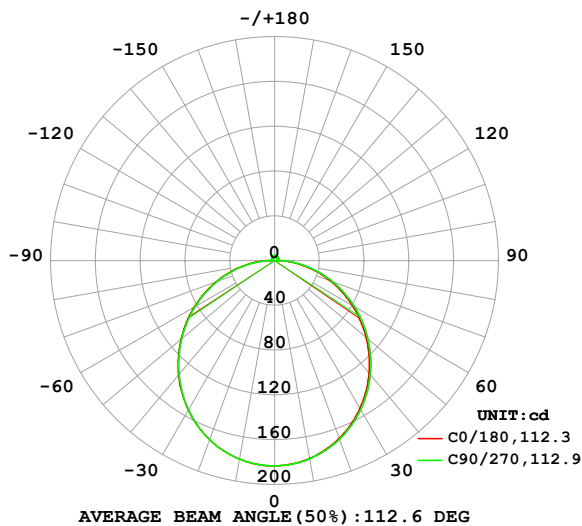


LUMINAIRE PHOTOMETRIC TEST REPORT

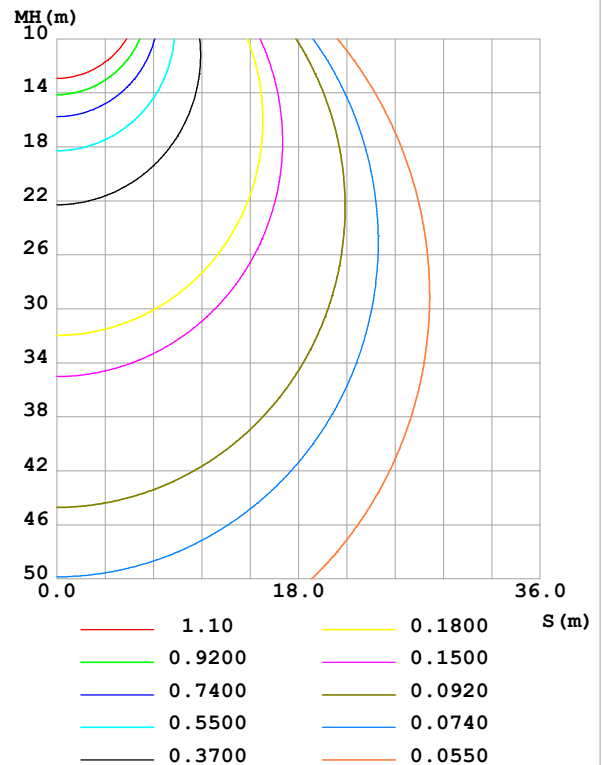
Test:U:24.00V I:0.4161A P:9.986W PF:1.000 Freq:0Hz Lamp Flux:558.744x1 lm		
NAME: SF16-24V-3528-144-2200-80	TYPE:	WEIGHT:
SPEC.:	DIM.: Length=1m	SERIAL No.:
MFR.:	SUR.:	Shielding Angle:

DATA OF LAMP		PHOTOMETRIC DATA Eff: 55.95 lm/W			
MODEL		I _{max} (cd)	183.4	S/MH(C0/180)	1.25
NOMINAL POWER(W)		LOR(%)	100.0	S/MH(C90/270)	1.25
RATED VOLTAGE(V)		TOTAL FLUX(lm)	558.74	η UP,DN(C0-180)	1.9,48.2
NOMINAL FLUX(lm)	558.744	CIE CLASS	DIRECT	η UP,DN(C180-360)	1.9,48.1
LAMPS INSIDE	1	η up (%)	3.7	CIBSE SHR NOM	1.25
TEST VOLTAGE(V)		η down (%)	96.3	CIBSE SHR MAX	1.35

LUMINOUS INTENSITY DISTRIBUTION DIAGRAM



C0 PLANE ISOLUX DIAGRAM (UNIT:lx)



C Range: 0 - 360DEG
C Interval: 22.5DEG
Test Speed: HIGH
Temperature:25.3℃
Operators:Cloud
Test Date:2024-10-31

γ Range: 0 - 180DEG
γ Interval: 1.0DEG
Test System:EVERFINE GO-2000B_V1 SYSTEM V2.00.488
Humidity:65.0%
Test Distance:6.360m [K=1.0000]
Remarks:

ZONAL FLUX DIAGRAM

ZONAL FLUX DIAGRAM:

γ	C0	C45	C90	C135	C180	C225	C270	C315	γ	Φ zone	Φ total	%lum, lamp
10	179.6	179.8	179.9	180.0	180.1	180.1	180.0	180.0	0- 10	17.34	17.34	3.1,3.1
20	169.0	169.7	169.9	170.0	170.1	170.2	170.0	169.9	10- 20	49.58	66.92	12,12
30	152.6	153.5	153.9	154.1	154.2	154.2	153.9	153.6	20- 30	74.86	141.8	25.4,25.4
40	131.4	132.5	133.2	133.3	133.4	133.3	132.8	132.5	30- 40	89.95	231.7	41.5,41.5
50	106.8	108.2	109.1	109.0	109.1	108.8	108.2	107.9	40- 50	93.30	325.0	58.2,58.2
60	80.21	81.58	82.67	82.50	82.70	82.23	81.69	81.33	50- 60	85.20	410.2	73.4,73.4
70	53.10	54.41	55.33	55.29	55.63	55.04	54.44	54.06	60- 70	67.60	477.8	85.5,85.5
80	26.49	27.60	28.18	28.38	28.87	28.19	27.53	27.24	70- 80	43.46	521.3	93.3,93.3
90	5.585	4.944	2.762	5.326	6.712	5.366	2.862	4.909	80- 90	16.57	537.9	96.3,96.3
100	2.484	2.539	2.639	2.558	2.343	2.790	2.776	2.645	90-100	3.229	541.1	96.8,96.8
110	2.829	2.882	2.971	2.893	2.533	2.995	3.004	2.689	100-110	2.873	544.0	97.4,97.4
120	3.177	3.113	3.237	3.231	2.864	3.229	3.275	2.923	110-120	2.983	546.9	97.9,97.9
130	3.497	3.378	3.486	3.552	3.187	3.488	3.524	3.492	120-130	2.960	549.9	98.4,98.4
140	3.785	3.644	3.737	3.850	3.523	3.760	3.810	3.810	130-140	2.785	552.7	98.9,98.9
150	4.067	3.903	4.120	4.142	3.866	4.042	4.093	4.056	140-150	2.432	555.1	99.4,99.4
160	4.329	4.342	4.410	4.419	4.203	4.317	4.367	4.322	150-160	1.930	557.0	99.7,99.7
170	4.387	4.558	4.618	4.613	4.329	4.559	4.595	4.550	160-170	1.257	558.3	99.9,99.9
180	4.481	4.680	4.722	4.700	4.484	4.680	4.725	4.712	170-180	0.4393	558.7	100,100
DEG	LUMINOUS INTENSITY:cd									UNIT:lm		

Conical surface Flux(90deg): 278.71 lm

%lum = 49.9%

%lamp = 49.9%

Conical surface Flux(130deg): 446.72 lm

%lum = 79.9%

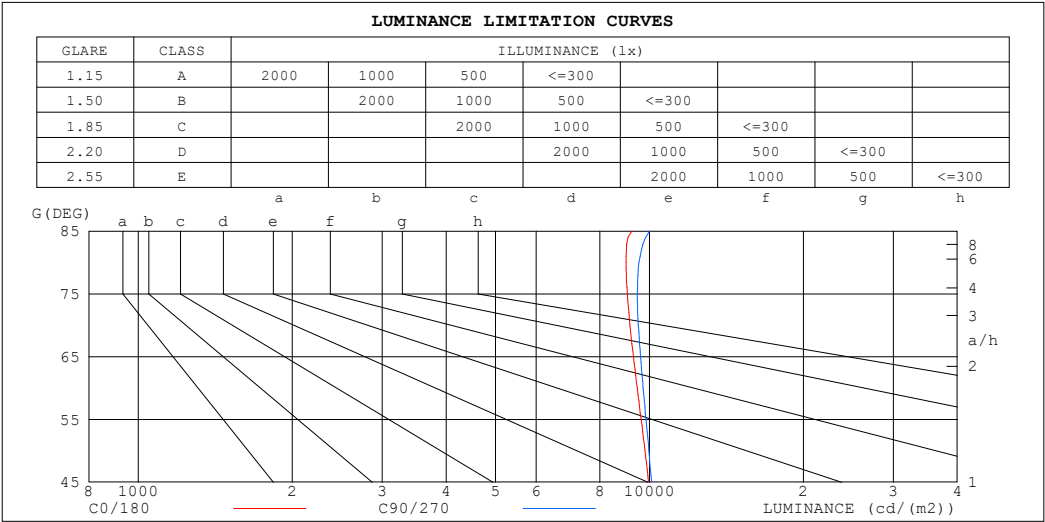
%lamp = 79.9%

C Range: 0 - 360DEG
 C Interval: 22.5DEG
 Test Speed: HIGH
 Temperature:25.3℃
 Operators:Cloud
 Test Date:2024-10-31

γ Range: 0 - 180DEG
 γ Interval: 1.0DEG
 Test System:EVERFINE GO-2000B_V1 SYSTEM V2.00.488
 Humidity:65.0%
 Test Distance:6.360m [K=1.0000]
 Remarks:

LUMINANCE LIMITATION CURVES

Test:U:24.00V I:0.4161A P:9.986W PF:1.000 Freq:0Hz Lamp Flux:558.744x1 lm		
NAME: SF16-24V-3528-144-2200-80	TYPE:	WEIGHT:
SPEC.:	DIM.: Length=1m	SERIAL No.:
MFR.:	SUR.:	Shielding Angle:



LUMINANCE cd/(m2)		
G (DEG)	C0/180	C90/270
85	9232	10011
80	8997	9540
75	9045	9466
70	9157	9510
65	9303	9608
60	9462	9719
55	9631	9844
50	9800	9976
45	9960	10096

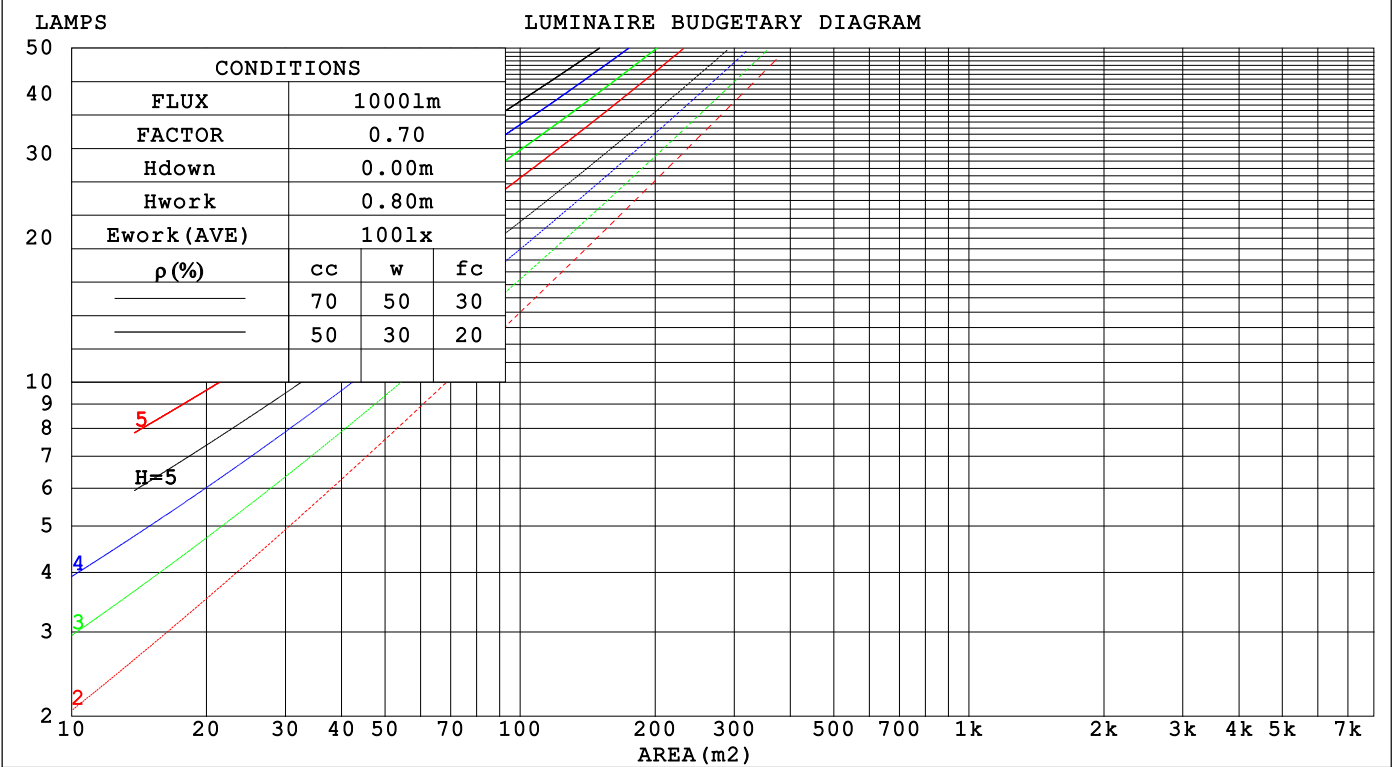
C Range: 0 - 360DEG
C Interval: 22.5DEG
Test Speed: HIGH
Temperature:25.3℃
Operators:Cloud
Test Date:2024-10-31

γ Range: 0 - 180DEG
γ Interval: 1.0DEG
Test System:EVERFINE GO-2000B_V1 SYSTEM V2.00.488
Humidity:65.0%
Test Distance:6.360m [K=1.0000]
Remarks:

CU AND LUMINAIRE BUDGETARY ESTIMATE DIAGRAM

Test:U:24.00V I:0.4161A P:9.986W PF:1.000 Freq:0Hz		
Lamp Flux:558.744x1 lm		
NAME: SF16-24V-3528-144-2200-80	TYPE:	WEIGHT:
SPEC.:	DIM.: Length=1m	SERIAL No.:
MFR.:	SUR.:	Shielding Angle:

pcc	80%			70%			50%			30%			10%			0
pw	50%	30%	10%	50%	30%	10%	50%	30%	10%	50%	30%	10%	50%	30%	10%	0
pfc	20%			20%			20%			20%			20%			0
RCR	RCR:Room Cavity Ratio															



C Range: 0 - 360DEG
C Interval: 22.5DEG
Test Speed: HIGH
Temperature:25.3℃
Operators:Cloud
Test Date:2024-10-31

γ Range: 0 - 180DEG
γ Interval: 1.0DEG
Test System:EVERFINE GO-2000B_V1 SYSTEM V2.00.488
Humidity:65.0%
Test Distance:6.360m [K=1.0000]
Remarks:

WEC AND CCEC

Test:U:24.00V I:0.4161A P:9.986W PF:1.000 Freq:0Hz Lamp Flux:558.744x1 lm		
NAME: SF16-24V-3528-144-2200-80	TYPE:	WEIGHT:
SPEC.:	DIM.: Length=1m	SERIAL No.:
MFR.:	SUR.:	Shielding Angle:

pcc	80%			70%			50%			30%			10%			0														
pw	50%	30%	10%	50%	30%	10%	50%	30%	10%	50%	30%	10%	50%	30%	10%	0														
pfc	20%			20%			20%			20%			20%			0														
RCR	RCR:Room Cavity Ratio															Wall Exitance Coefficients(WEC)														
0.0																														
1.0	.325	.185	.059	.317	.181	.057	.302	.173	.055	.288	.166	.053	.274	.159	.051															
2.0	.300	.165	.051	.293	.161	.050	.279	.155	.048	.267	.150	.047	.255	.144	.045															
3.0	.275	.147	.044	.269	.144	.043	.257	.139	.042	.245	.134	.041	.235	.130	.040															
4.0	.253	.131	.039	.247	.129	.038	.236	.125	.037	.226	.121	.037	.216	.118	.036															
5.0	.233	.119	.034	.228	.117	.034	.218	.113	.033	.209	.110	.033	.200	.107	.032															
6.0	.215	.108	.031	.211	.106	.031	.202	.103	.030	.194	.101	.030	.186	.098	.029															
7.0	.200	.099	.028	.196	.098	.028	.188	.095	.027	.180	.093	.027	.173	.090	.026															
8.0	.186	.091	.026	.183	.090	.025	.176	.088	.025	.169	.086	.025	.163	.083	.024															
9.0	.174	.084	.024	.171	.083	.023	.165	.081	.023	.159	.079	.023	.153	.078	.022															
10.0	.164	.079	.022	.161	.078	.022	.155	.076	.021	.149	.074	.021	.144	.072	.021															

pcc	80%			70%			50%			30%			10%			0
pw	50%	30%	10%	50%	30%	10%	50%	30%	10%	50%	30%	10%	50%	30%	10%	0
pfc	20%			20%			20%			20%			20%			0
RCR	RCR:Room Cavity Ratio						Ceiling Cavity Exitance Coefficients (CCEC)									
0.0	.219	.219	.219	.187	.187	.187	.128	.128	.128	.073	.073	.073	.023	.023	.023	
1.0	.210	.185	.162	.180	.159	.139	.123	.109	.096	.071	.063	.056	.023	.020	.018	
2.0	.202	.161	.126	.173	.138	.109	.119	.096	.076	.068	.056	.044	.022	.018	.014	
3.0	.195	.143	.103	.167	.124	.089	.115	.086	.062	.066	.050	.037	.021	.016	.012	
4.0	.187	.130	.087	.160	.113	.076	.110	.078	.053	.064	.046	.031	.021	.015	.010	
5.0	.179	.120	.076	.154	.104	.066	.106	.073	.047	.061	.043	.028	.020	.014	.009	
6.0	.172	.112	.068	.148	.097	.059	.102	.068	.042	.059	.040	.025	.019	.013	.008	
7.0	.165	.105	.063	.142	.091	.054	.098	.064	.039	.057	.038	.023	.018	.012	.008	
8.0	.159	.099	.058	.137	.086	.051	.095	.060	.036	.055	.036	.021	.018	.012	.007	
9.0	.153	.094	.055	.131	.082	.048	.091	.057	.034	.053	.034	.020	.017	.011	.007	
10.0	.147	.090	.052	.127	.078	.045	.088	.055	.032	.051	.032	.019	.017	.011	.006	

C Range: 0 - 360DEG
C Interval: 22.5DEG
Test Speed: HIGH
Temperature:25.3℃
Operators:Cloud
Test Date:2024-10-31

γ Range: 0 - 180DEG
γ Interval: 1.0DEG
Test System:EVERFINE GO-2000B_V1 SYSTEM V2.00.488
Humidity:65.0%
Test Distance:6.360m [K=1.0000]
Remarks:

UGR(Unified Glare Rating) Table

Test:U:24.00V I:0.4161A P:9.986W PF:1.000 Freq:0Hz Lamp Flux:558.744x1 lm										
NAME: SF16-24V-3528-144-2200-80					TYPE:			WEIGHT:		
SPEC.:					DIM.: Length=1m			SERIAL No.:		
MFR.:					SUR.:			Shielding Angle:		
ceiling/cavity	0.7	0.7	0.5	0.5	0.3	0.7	0.7	0.5	0.5	0.3
walls	0.5	0.3	0.5	0.3	0.3	0.5	0.3	0.5	0.3	0.3
working plane	0.2	0.2	0.2	0.2	0.2	0.2	0.2	0.2	0.2	0.2
Room dimensions	Viewed crosswise					Viewed endwise				
x = 2H y = 2H	22.5	24.0	22.8	24.3	24.5	22.6	24.1	22.9	24.4	24.6
3H	24.2	25.5	24.5	25.8	26.2	24.3	25.7	24.7	26.0	26.3
4H	24.9	26.2	25.3	26.5	26.9	25.1	26.4	25.4	26.7	27.0
6H	25.5	26.7	25.9	27.1	27.4	25.7	26.9	26.1	27.3	27.6
8H	25.7	26.9	26.1	27.3	27.6	25.9	27.1	26.3	27.5	27.8
12H	25.9	27.0	26.3	27.4	27.8	26.1	27.3	26.5	27.6	28.0
4H 2H	23.2	24.5	23.5	24.8	25.1	23.2	24.5	23.6	24.9	25.2
3H	25.0	26.2	25.4	26.5	26.9	25.1	26.3	25.5	26.6	27.0
4H	25.9	26.9	26.3	27.3	27.7	26.0	27.1	26.5	27.5	27.9
6H	26.6	27.6	27.1	28.0	28.4	26.8	27.7	27.3	28.2	28.6
8H	26.9	27.8	27.4	28.2	28.7	27.1	28.0	27.6	28.4	28.9
12H	27.2	28.0	27.6	28.4	28.9	27.4	28.2	27.9	28.6	29.1
8H 4H	26.2	27.1	26.7	27.5	28.0	26.3	27.2	26.8	27.7	28.1
6H	27.2	27.9	27.7	28.4	28.9	27.3	28.0	27.8	28.5	29.0
8H	27.6	28.2	28.1	28.7	29.2	27.8	28.4	28.3	28.9	29.4
12H	27.9	28.5	28.5	29.0	29.5	28.1	28.7	28.7	29.2	29.8
12H 4H	26.3	27.1	26.7	27.5	28.0	26.4	27.2	26.9	27.6	28.1
6H	27.3	27.9	27.8	28.4	28.9	27.4	28.1	27.9	28.5	29.1
8H	27.7	28.3	28.3	28.8	29.4	27.9	28.5	28.4	29.0	29.5
Variations with the observer position at spacings(CIE Pub.117):										
S = 1.0H	+ 0.1 / - 0.2					+ 0.1 / - 0.2				
1.5H	+ 0.2 / - 0.3					+ 0.2 / - 0.3				
2.0H	+ 0.1 / - 0.3					+ 0.1 / - 0.3				

CIE Pub.117, 558.7 lm Total Lamp Luminous Flux Correct (8log(F/F0) = -2.0)
Area: 0.017 m2

C Range: 0 - 360DEG
C Interval: 22.5DEG
Test Speed: HIGH
Temperature:25.3℃
Operators:Cloud
Test Date:2024-10-31

γ Range: 0 - 180DEG
γ Interval: 1.0DEG
Test System:EVERFINE GO-2000B_V1 SYSTEM V2.00.488
Humidity:65.0%
Test Distance:6.360m [K=1.0000]
Remarks:

UTILIZATION FACTORS TABLE

Test:U:24.00V I:0.4161A P:9.986W PF:1.000 Freq:0Hz Lamp Flux:558.744x1 lm		
NAME: SF16-24V-3528-144-2200-80	TYPE:	WEIGHT:
SPEC.:	DIM.: Length=1m	SERIAL No.:
MFR.:	SUR.:	Shielding Angle:

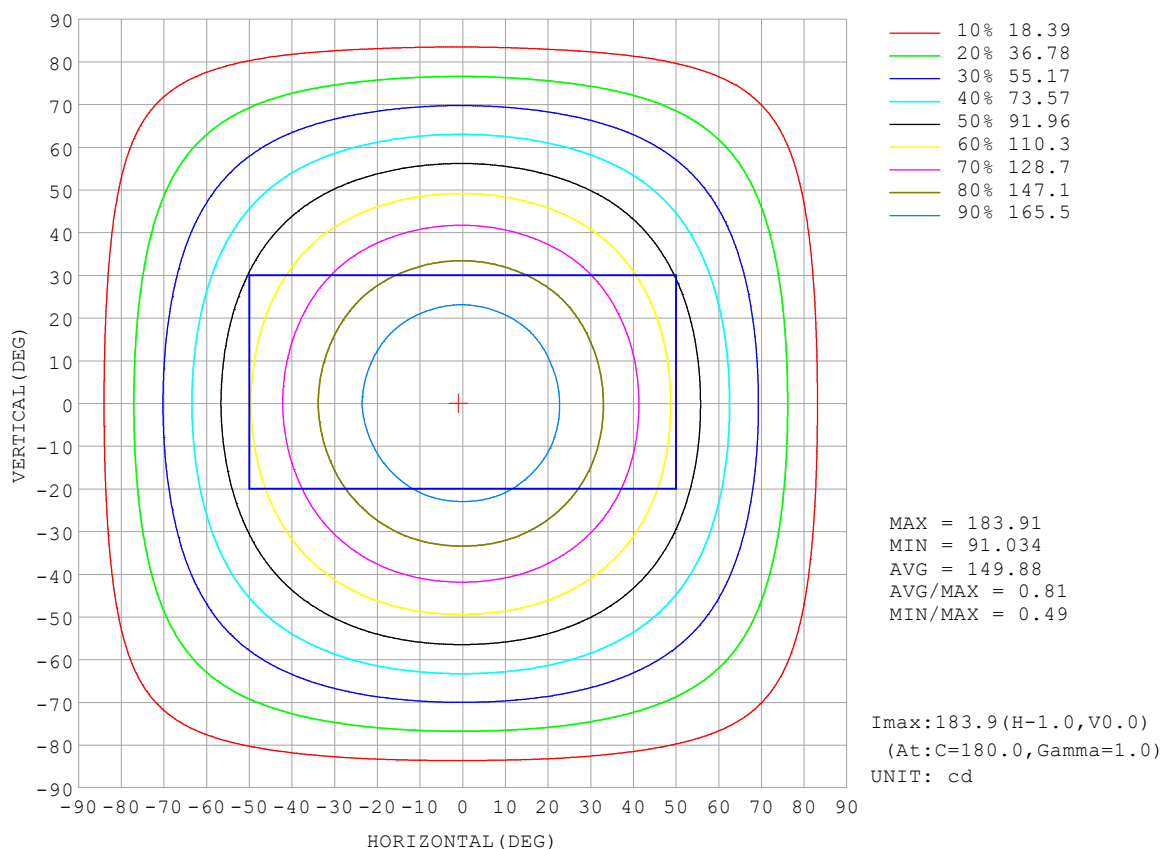
REFLECTANCE										
Ceiling	0.8	0.8	0.8	0.7	0.7	0.7	0.5	0.5	0.5	0
Walls	0.7	0.5	0.3	0.7	0.5	0.3	0.7	0.5	0.3	0
Working plane	0.2	0.2	0.2	0.2	0.2	0.2	0.2	0.2	0.2	0
ROOM INDEX	UTILIZATION FACTORS (PERCENT) $k(RI) \times RCR = 5$									
$k = 0.60$	56	44	37	55	44	37	53	43	37	30
0.80	66	54	46	64	53	46	62	52	45	38
1.00	74	62	55	72	62	54	70	63	54	46
1.25	81	70	63	79	69	62	76	67	61	53
1.50	86	76	68	84	74	68	80	72	66	58
2.00	93	84	77	91	82	76	87	80	74	65
2.50	97	89	82	94	87	81	90	84	79	69
3.00	100	93	87	98	91	86	93	88	83	74
4.00	104	98	93	102	96	92	97	92	88	78
5.00	107	102	97	104	99	95	99	95	92	81
ROOM INDEX	UF (total)									Direct
According to DIN EN 13032-2 2004			Suspended					SHRNOM = 1.25		

C Range: 0 - 360DEG
 C Interval: 22.5DEG
 Test Speed: HIGH
 Temperature: 25.3°C
 Operators: Cloud
 Test Date: 2024-10-31

γ Range: 0 - 180DEG
 γ Interval: 1.0DEG
 Test System: EVERFINE GO-2000B_V1 SYSTEM V2.00.488
 Humidity: 65.0%
 Test Distance: 6.360m [K=1.0000]
 Remarks:

ISOCANDELA DIAGRAM

Test:U:24.00V I:0.4161A P:9.986W PF:1.000 Freq:0Hz Lamp Flux:558.744x1 lm		
NAME: SF16-24V-3528-144-2200-80	TYPE:	WEIGHT:
SPEC.:	DIM.: Length=1m	SERIAL No.:
MFR.:	SUR.:	Shielding Angle:

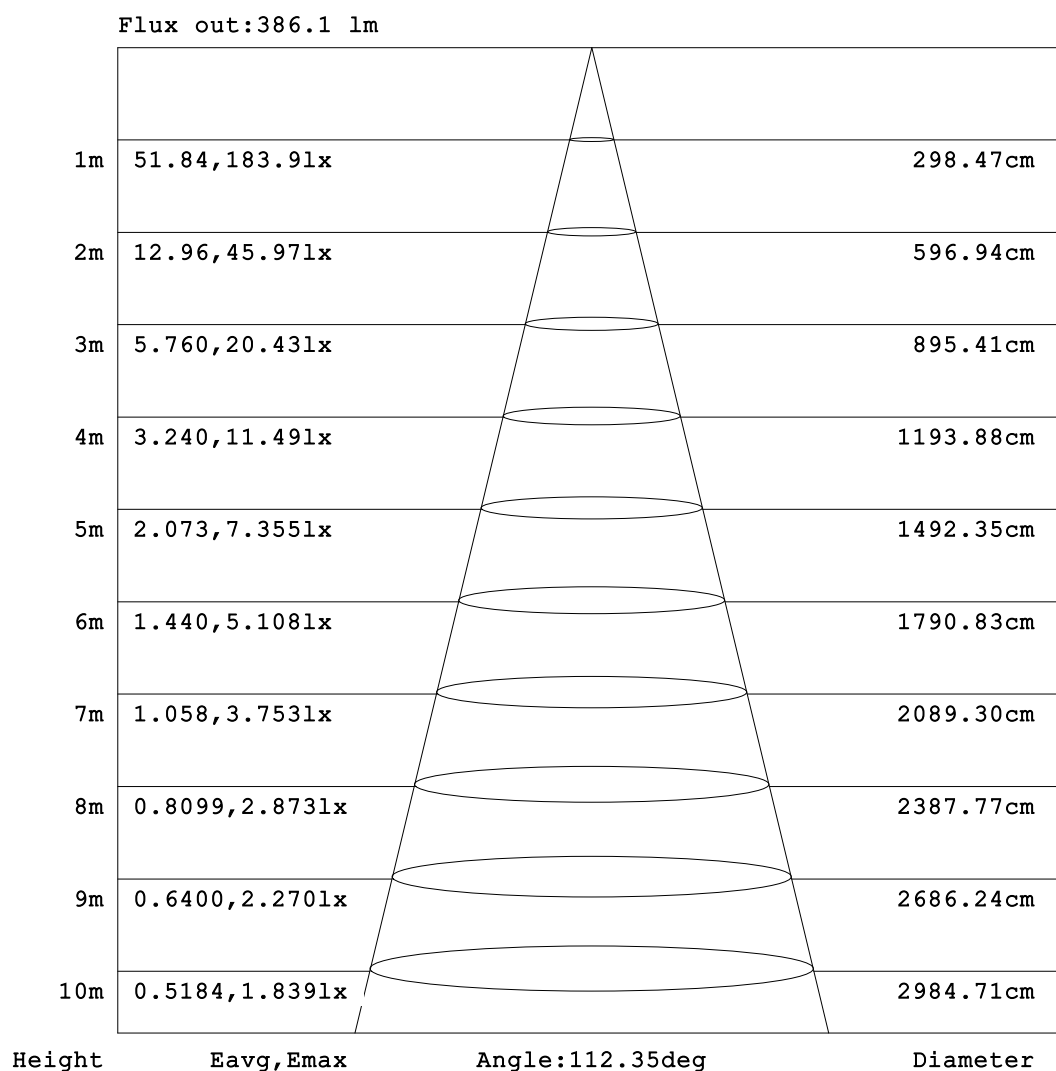


C Range: 0 - 360DEG
C Interval: 22.5DEG
Test Speed: HIGH
Temperature:25.3℃
Operators:Cloud
Test Date:2024-10-31

γ Range: 0 - 180DEG
γ Interval: 1.0DEG
Test System:EVERFINE GO-2000B_V1 SYSTEM V2.00.488
Humidity:65.0%
Test Distance:6.360m [K=1.0000]
Remarks:

AAI Figure

Test:U:24.00V I:0.4161A P:9.986W PF:1.000 Freq:0Hz Lamp Flux:558.744x1 lm		
NAME: SF16-24V-3528-144-2200-80	TYPE:	WEIGHT:
SPEC.:	DIM.: Length=1m	SERIAL No.:
MFR.:	SUR.:	Shielding Angle:



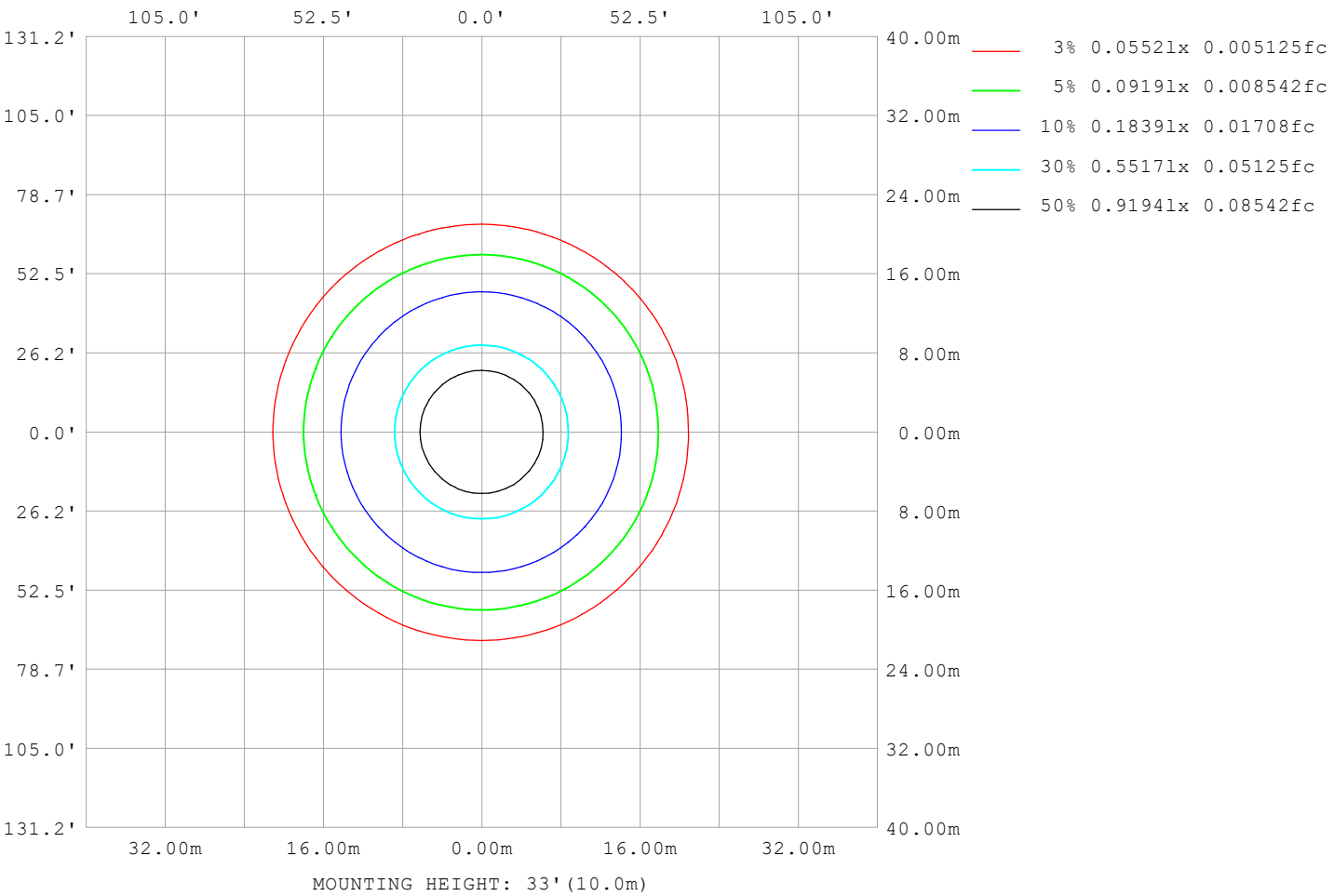
Note:The Curves indicate the illuminated area and the average illumination when the luminaire is at different distance.

C Range: 0 - 360DEG
C Interval: 22.5DEG
Test Speed: HIGH
Temperature:25.3℃
Operators:Cloud
Test Date:2024-10-31

γ Range: 0 - 180DEG
γ Interval: 1.0DEG
Test System:EVERFINE GO-2000B_V1 SYSTEM V2.00.488
Humidity:65.0%
Test Distance:6.360m [K=1.0000]
Remarks:

ISOLUX DIAGRAM

Test:U:24.00V I:0.4161A P:9.986W PF:1.000 Freq:0Hz Lamp Flux:558.744x1 lm		
NAME: SF16-24V-3528-144-2200-80	TYPE:	WEIGHT:
SPEC.:	DIM.: Length=1m	SERIAL No.:
MFR.:	SUR.:	Shielding Angle:



C Range: 0 - 360DEG	γ Range: 0 - 180DEG
C Interval: 22.5DEG	γ Interval: 1.0DEG
Test Speed: HIGH	Test System:EVERFINE GO-2000B_V1 SYSTEM V2.00.488
Temperature:25.3℃	Humidity:65.0%
Operators:Cloud	Test Distance:6.360m [K=1.0000]
Test Date:2024-10-31	Remarks:

LED Avg.L Report

Test:U:24.00V I:0.4161A P:9.986W PF:1.000 Freq:0Hz Lamp Flux:558.744x1 lm		
NAME: SF16-24V-3528-144-2200-80	TYPE:	WEIGHT:
SPEC.:	DIM.: Length=1m	SERIAL No.:
MFR.:	SUR.:	Shielding Angle:

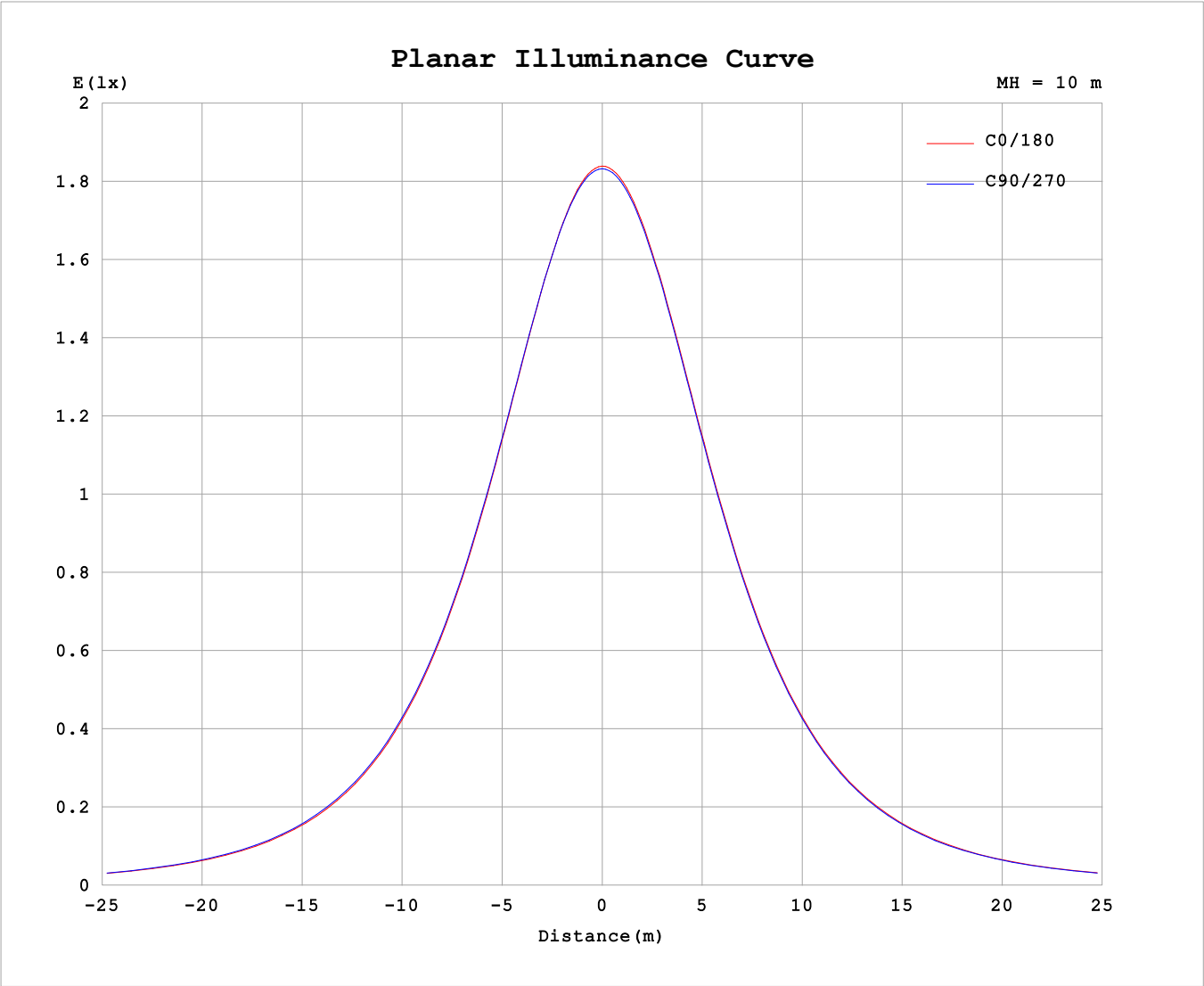
AvgL	cd/m2
L_0~180 (65) av	9454
L_0~180 (75) av	9301
L_0~180 (85) av	9975
L_90~270 (65) av	9547
L_90~270 (75) av	9385
L_90~270 (85) av	9819
L_45 (65) av	9510
L_45 (75) av	9365
L_45 (85) av	9918

Standard: GB/T 29293-2012

C Range: 0 - 360DEG
C Interval: 22.5DEG
Test Speed: HIGH
Temperature:25.3℃
Operators:Cloud
Test Date:2024-10-31

γ Range: 0 - 180DEG
γ Interval: 1.0DEG
Test System:EVERFINE GO-2000B_V1 SYSTEM V2.00.488
Humidity:65.0%
Test Distance:6.360m [K=1.0000]
Remarks:

Planar Illuminance Curve



C Range: 0 - 360DEG
C Interval: 22.5DEG
Test Speed: HIGH
Temperature:25.3℃
Operators:Cloud
Test Date:2024-10-31

γ Range: 0 - 180DEG
γ Interval: 1.0DEG
Test System:EVERFINE GO-2000B_V1 SYSTEM V2.00.488
Humidity:65.0%
Test Distance:6.360m [K=1.0000]
Remarks:

LUMINOUS DISTRIBUTION INTENSITY DATA

Test:U:24.00V I:0.4161A P:9.986W PF:1.000 Freq:0Hz Lamp Flux:558.744x1 lm																	
NAME: SF16-24V-3528-144-2200-80									TYPE:						WEIGHT:		
SPEC.:									DIM.: Length=1m						SERIAL No.:		
MFR.:									SUR.:						Shielding Angle:		

Table--1

UNIT: cd

C (DEG) γ (DEG)	0	22.5	45	67.5	90	112.5	135	157.5	180	202.5	225	247.5	270	292.5	315	337.5			
0	183	183	183	183	183	183	183	183	183	183	183	183	183	183	183	183			
5	182	183	182	182	182	183	183	183	183	183	183	183	183	183	183	182			
10	180	180	180	180	180	180	180	180	180	180	180	180	180	180	180	180			
15	175	176	176	176	176	176	176	176	176	176	176	176	176	176	176	175			
20	169	169	170	170	170	170	170	170	170	170	170	170	170	170	170	169			
25	161	162	162	163	163	163	163	163	163	163	163	163	163	162	162	162			
30	153	153	153	154	154	154	154	154	154	154	154	154	154	154	154	153			
35	142	143	144	144	144	144	144	144	144	144	144	144	144	144	144	143			
40	131	132	133	133	133	133	133	133	133	133	133	133	133	133	133	132			
45	119	120	121	121	121	122	122	121	122	121	121	121	121	121	121	120			
50	107	107	108	109	109	109	109	109	109	109	109	108	108	108	108	107			
55	93.6	94.4	95.1	95.9	96.0	96.2	95.9	95.9	96.0	95.7	95.7	95.2	95.1	94.8	94.8	94.3			
60	80.2	81.0	81.6	82.5	82.7	82.8	82.5	82.5	82.7	82.3	82.2	81.8	81.7	81.4	81.3	80.8			
65	66.7	67.4	68.0	68.9	69.1	69.2	68.9	68.9	69.2	68.8	68.7	68.2	68.1	67.7	67.7	67.2			
70	53.1	53.9	54.4	55.1	55.3	55.4	55.3	55.4	55.6	55.2	55.0	54.5	54.4	54.1	54.1	53.7			
75	39.7	40.4	40.9	41.6	41.7	41.9	41.8	41.9	42.2	41.7	41.6	41.0	40.9	40.6	40.6	40.2			
80	26.5	27.2	27.6	28.1	28.2	28.4	28.4	28.6	28.9	28.4	28.2	27.7	27.5	27.2	27.2	27.0			
85	13.6	14.2	14.4	14.9	14.8	15.2	15.2	15.6	15.9	15.4	15.0	14.4	14.3	13.9	14.1	13.9			
90	5.59	5.62	4.94	3.88	2.76	3.98	5.33	6.38	6.71	6.26	5.37	3.90	2.86	3.72	4.91	5.50			
95	2.41	2.42	2.46	2.46	2.48	2.47	2.69	2.80	2.60	2.80	2.91	2.85	2.78	2.82	2.68	2.44			
100	2.48	2.54	2.54	2.58	2.64	2.62	2.56	2.61	2.34	2.53	2.79	2.88	2.78	2.74	2.64	2.49			
105	2.65	2.69	2.71	2.75	2.81	2.79	2.72	2.70	2.39	2.56	2.88	2.96	2.85	2.67	2.64	2.61			
110	2.83	2.87	2.88	2.95	2.97	2.97	2.89	2.87	2.53	2.69	3.00	3.06	3.00	2.60	2.69	2.74			
115	3.01	3.04	3.05	3.06	3.11	3.14	3.07	3.04	2.70	2.83	3.11	3.16	3.16	2.90	2.91	2.89			
120	3.18	3.20	3.11	3.20	3.24	3.29	3.23	3.21	2.86	2.98	3.23	3.27	3.28	3.25	2.92	3.02			
125	3.34	3.37	3.24	3.33	3.36	3.44	3.40	3.37	3.02	3.12	3.36	3.40	3.39	3.37	3.27	3.09			
130	3.50	3.53	3.38	3.46	3.49	3.59	3.55	3.53	3.19	3.28	3.49	3.52	3.52	3.54	3.49	3.18			
135	3.65	3.65	3.51	3.59	3.62	3.74	3.71	3.69	3.36	3.43	3.62	3.65	3.66	3.68	3.65	3.48			
140	3.78	3.63	3.64	3.72	3.74	3.88	3.85	3.84	3.52	3.59	3.76	3.79	3.81	3.81	3.81	3.62			
145	3.93	3.76	3.77	3.85	3.86	4.03	3.99	3.99	3.69	3.75	3.90	3.93	3.95	3.94	3.93	3.77			
150	4.07	3.89	3.90	3.98	4.12	4.17	4.14	4.14	3.87	3.91	4.04	4.06	4.09	4.07	4.06	3.92			
155	4.20	4.03	4.04	4.26	4.27	4.31	4.28	4.28	4.04	4.07	4.18	4.21	4.23	4.20	4.19	4.09			
160	4.33	4.17	4.34	4.40	4.41	4.44	4.42	4.41	4.20	4.23	4.32	4.34	4.37	4.33	4.32	4.25			
165	4.46	4.29	4.46	4.52	4.53	4.56	4.53	4.53	4.34	4.36	4.45	4.46	4.49	4.44	4.43	4.39			
170	4.39	4.46	4.56	4.62	4.62	4.65	4.61	4.62	4.33	4.50	4.56	4.57	4.60	4.55	4.55	4.52			
175	4.44	4.64	4.63	4.70	4.68	4.72	4.68	4.68	4.43	4.59	4.65	4.65	4.68	4.65	4.65	4.61			
180	4.48	4.66	4.68	4.71	4.72	4.72	4.70	4.69	4.48	4.65	4.68	4.71	4.73	4.72	4.71	4.68			

C Range: 0 - 360DEG

C Interval: 22.5DEG

Test Speed: HIGH

Temperature:25.3℃

Operators:Cloud

Test Date:2024-10-31

γ Range: 0 - 180DEG

γ Interval: 1.0DEG

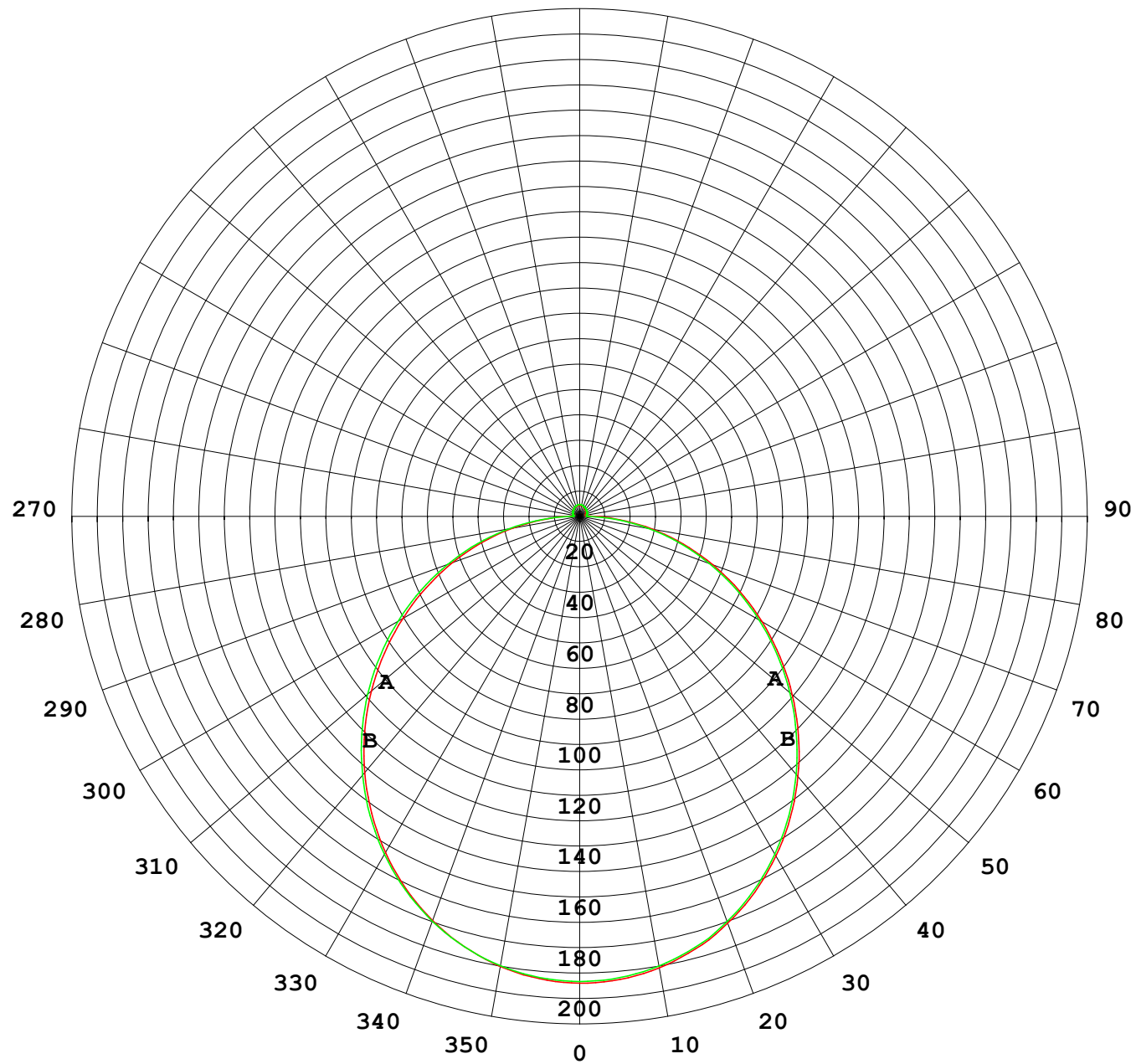
Test System:EVERFINE GO-2000B_V1 SYSTEM V2.00.488

Humidity:65.0%

Test Distance:6.360m [K=1.0000]

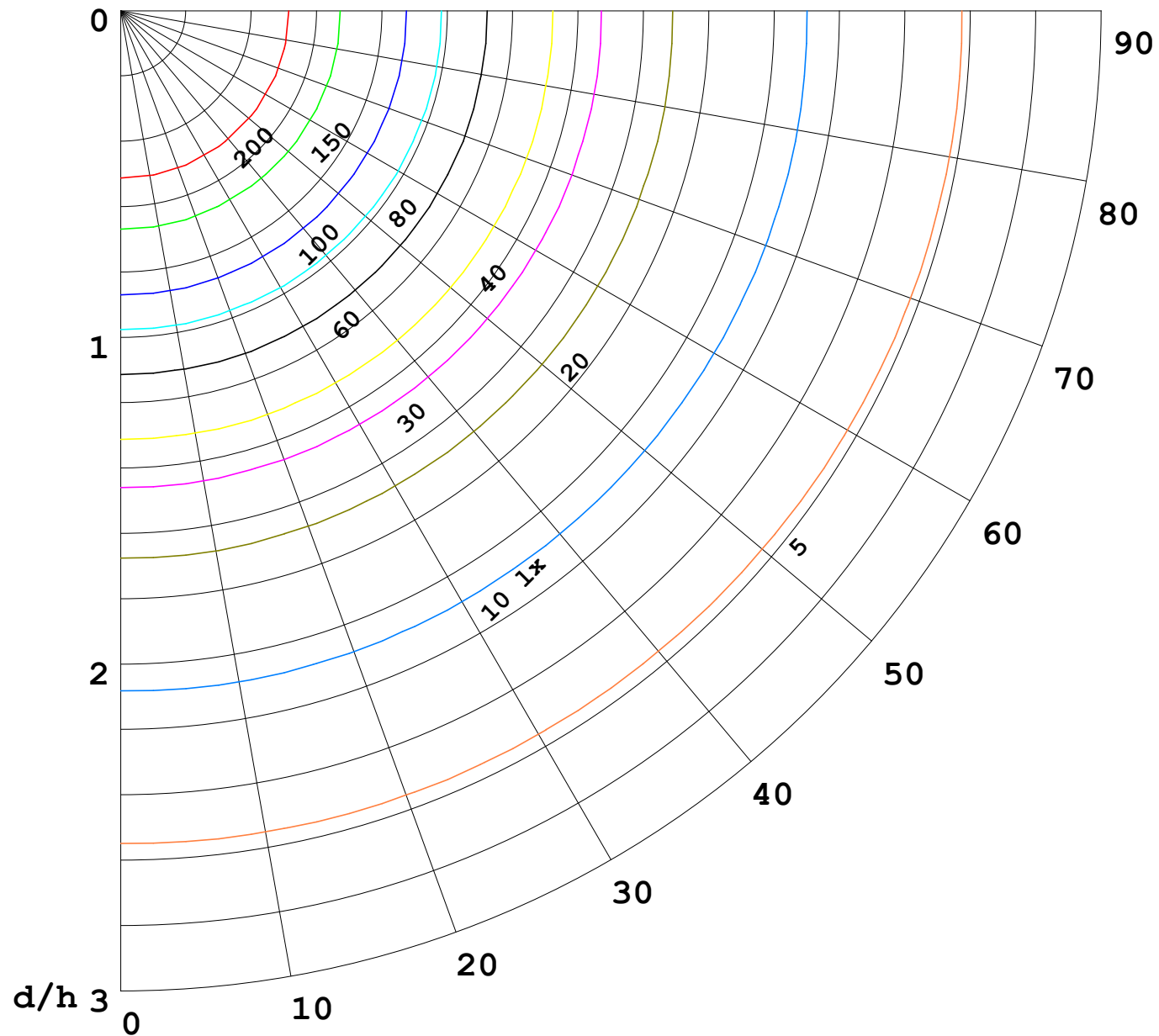
Remarks:

I (cd)



1000 lm

$\kappa = 1$



F = 1000 lm
 K = 0.7
 Hcc = 0.8 m
 Hfc = 0.0 m
 Eave = 100 lx

	Pcc	Pw	Pfc
—————	70	50	30
—————	50	30	20

