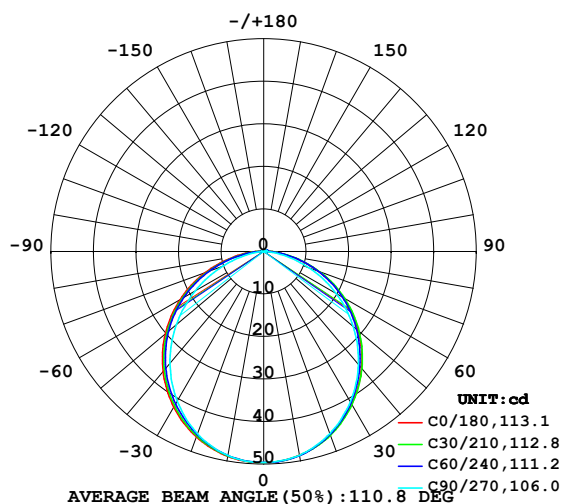


## LUMINAIRE PHOTOMETRIC TEST REPORT

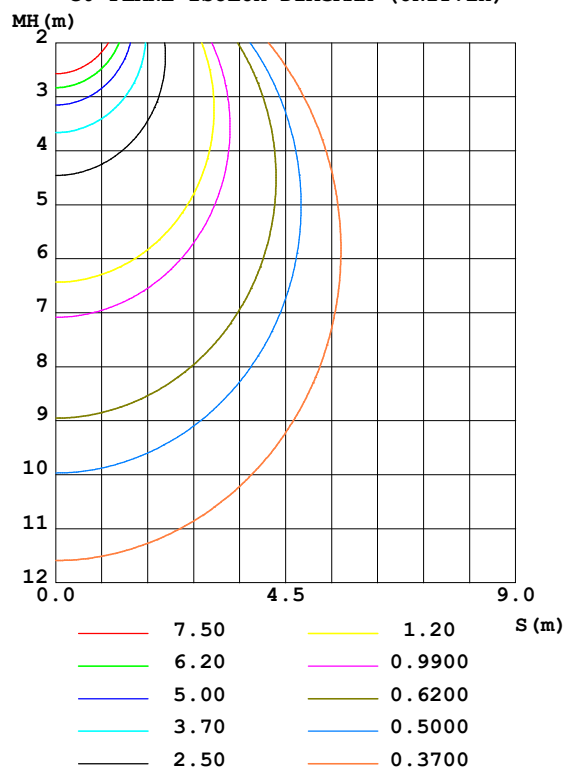
Test:U:24.00V I:0.3080A P:7.392W PF:1.000 Freq:50.00Hz Lamp Flux:142.549x1 lm		
NAME: SF15-24V-2835-120-3000+6000-80-3000	TYPE: 硅胶	WEIGHT:
SPEC.:	DIM.: 21mm*11.5mm	SERIAL No.:2021122314
MFR.: OLYMPIA	SUR.:1*0.0115	Shielding Angle:

DATA OF LAMP		PHOTOMETRIC DATA Eff: 19.28 lm/W			
MODEL	2835	I <sub>max</sub> (cd)	49.67	S/MH (C0/180)	1.27
NOMINAL POWER (W)	7.5	LOR (%)	100.0	S/MH (C90/270)	1.22
RATED VOLTAGE (V)	24	TOTAL FLUX (lm)	142.55	η UP, DN (C0-180)	0.8, 48.9
NOMINAL FLUX (lm)	142.549	CIE CLASS	DIRECT	η UP, DN (C180-360)	0.6, 49.7
LAMPS INSIDE	1	η up (%)	1.4	CIBSE SHR NOM	1.25
TEST VOLTAGE (V)	24	η down (%)	98.6	CIBSE SHR MAX	1.35

LUMINOUS INTENSITY DISTRIBUTION DIAGRAM



C0 PLANE ISOLUX DIAGRAM (UNIT:lx)



C Range: 0 - 360DEG  
 C Interval: 30.0DEG  
 Test Speed: HIGH  
 Temperature: 25.3DEG  
 Operators: LPC  
 Test Date: 2021-12-23

γ Range: 0 - 120DEG  
 γ Interval: 1.0DEG  
 Test System: EVERFINE GO-2000B\_V1 SYSTEM V2.0.362  
 Humidity: 65.0%  
 Test Distance: 9.200m [K=1.0000]  
 Remarks:

## ZONAL FLUX DIAGRAM

ZONAL FLUX DIAGRAM:

$\gamma$	C0	C45	C90	C135	C180	C225	C270	C315	$\gamma$	$\Phi$ zone	$\Phi$ total	%lum, lamp
10	48.63	48.72	48.64	48.55	48.89	48.74	48.71	48.86	0- 10	4.694	4.694	3.29,3.29
20	45.80	45.85	45.54	45.63	46.37	45.97	45.57	46.10	10- 20	13.40	18.10	12.7,12.7
30	41.46	41.33	40.79	41.25	42.28	41.65	40.68	41.59	20- 30	20.19	38.29	26.9,26.9
40	35.79	35.53	34.69	35.56	36.82	36.10	34.32	35.97	30- 40	24.19	62.47	43.8,43.8
50	29.08	28.92	27.51	28.85	30.20	29.47	26.82	29.49	40- 50	24.98	87.45	61.4,61.4
60	21.64	21.65	19.62	21.32	22.72	21.96	18.65	22.34	50- 60	22.57	110.0	77.2,77.2
70	13.69	13.89	11.46	13.29	14.70	13.82	10.30	14.55	60- 70	17.28	127.3	89.3,89.3
80	6.088	6.275	3.964	5.581	6.848	5.915	2.950	6.751	70- 80	10.02	137.3	96.3,96.3
90	1.550	1.309	0.4474	1.143	1.646	1.061	0.2366	1.332	80- 90	3.246	140.6	98.6,98.6
100	0.6773	0.7259	0.5278	0.8240	0.5142	0.5804	0.2712	0.5524	90-100	0.8037	141.4	99.2,99.2
110	0.6940	0.7502	0.6156	0.7917	0.2805	0.5354	0.3646	0.5672	100-110	0.6374	142.0	99.6,99.6
120	0.7137	0.2550	0.2178	0.5104	0.0467	0.0700	0.4574	0.5880	110-120	0.5232	142.5	100,100
130	0	0	0	0	0	0	0	0	120-130	0.0210	142.5	100,100
140	0	0	0	0	0	0	0	0	130-140	0	142.5	100,100
150	0	0	0	0	0	0	0	0	140-150	0	142.5	100,100
160	0	0	0	0	0	0	0	0	150-160	0	142.5	100,100
170	0	0	0	0	0	0	0	0	160-170	0	142.5	100,100
180	0	0	0	0	0	0	0	0	170-180	0	142.5	100,100
DEG	LUMINOUS INTENSITY:cd									UNIT:lm		

Conical surface Flux(90deg): 75.069 lm

%lum = 52.7%

%lamp = 52.7%

Conical surface Flux(120deg): 110.02 lm

%lum = 77.2%

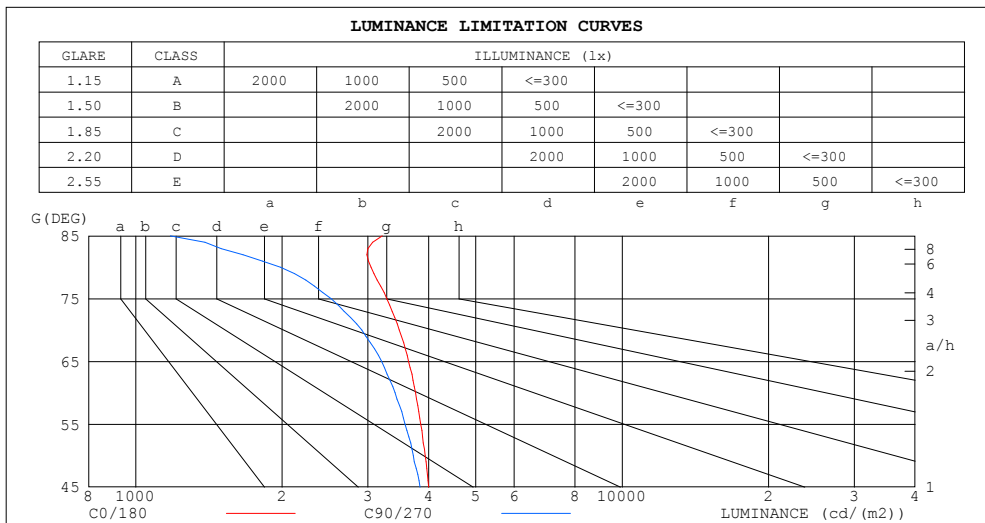
%lamp = 77.2%

C Range: 0 - 360DEG  
 C Interval: 30.0DEG  
 Test Speed: HIGH  
 Temperature:25.3DEG  
 Operators:LPC  
 Test Date:2021-12-23

$\gamma$  Range: 0 - 120DEG  
 $\gamma$  Interval: 1.0DEG  
 Test System:EVERFINE GO-2000B\_V1 SYSTEM V2.0.362  
 Humidity:65.0%  
 Test Distance:9.200m [K=1.0000]  
 Remarks:

## LUMINANCE LIMITATION CURVES

Test:U:24.00V I:0.3080A P:7.392W PF:1.000 Freq:50.00Hz Lamp Flux:142.549x1 lm		
NAME: SF15-24V-2835-120-3000+6000-80-3000	TYPE: 硅胶	WEIGHT:
SPEC.:	DIM.: 21mm*11.5mm	SERIAL No.:2021122314
MFR.: OLYMPIA	SUR.:1*0.0115	Shielding Angle:



LUMINANCE cd/ (m2)		
G (DEG)	C0/180	C90/270
85	3214	1179
80	3049	1985
75	3280	2521
70	3480	2914
65	3639	3201
60	3763	3412
55	3855	3578
50	3934	3721
45	4003	3841

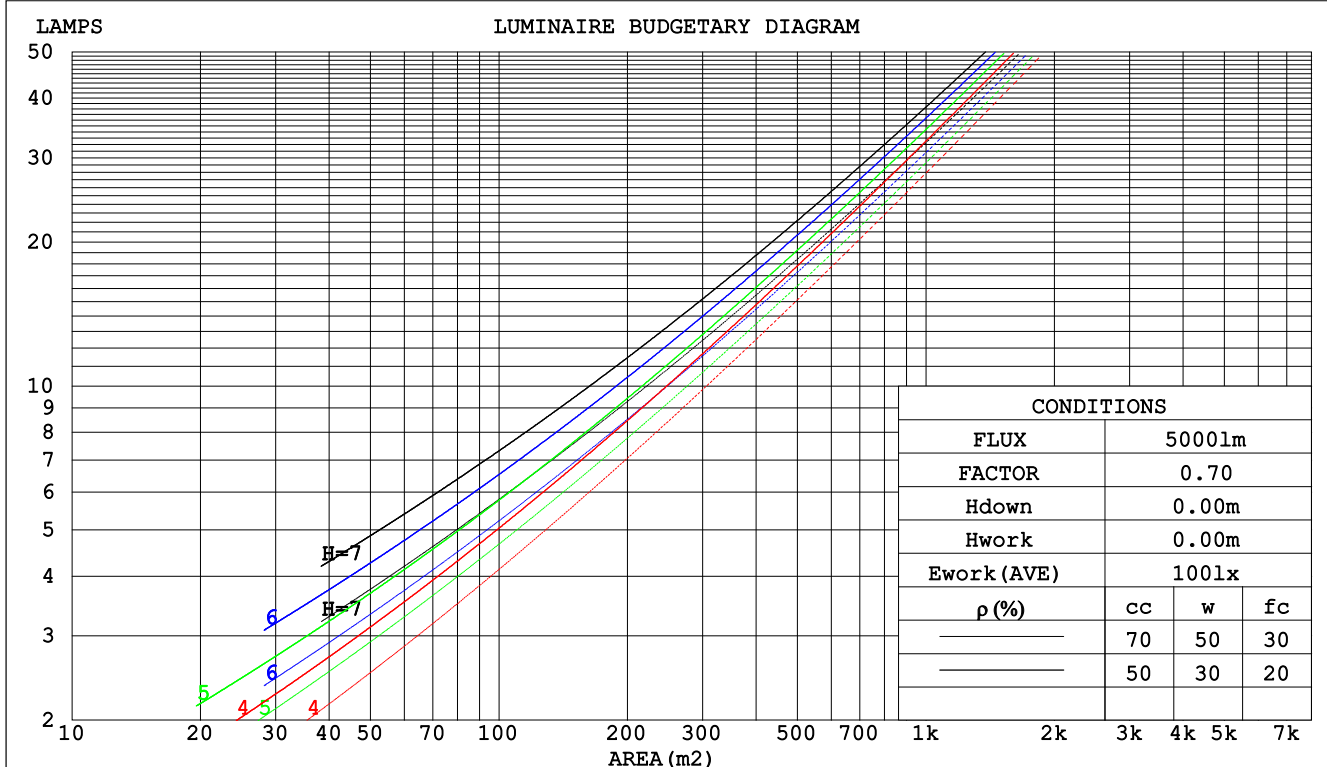
C Range: 0 - 360DEG  
C Interval: 30.0DEG  
Test Speed: HIGH  
Temperature:25.3DEG  
Operators:LPC  
Test Date:2021-12-23

γ Range: 0 - 120DEG  
γ Interval: 1.0DEG  
Test System:EVERFINE GO-2000B\_V1 SYSTEM V2.0.362  
Humidity:65.0%  
Test Distance:9.200m [K=1.0000]  
Remarks:

## CU AND LUMINAIRE BUDGETARY ESTIMATE DIAGRAM

Test:U:24.00V I:0.3080A P:7.392W PF:1.000 Freq:50.00Hz Lamp Flux:142.549x1 lm		
NAME: SF15-24V-2835-120-3000+6000-80-3000	TYPE: 硅胶	WEIGHT:
SPEC.:	DIM.: 21mm*11.5mm	SERIAL No.:2021122314
MFR.: OLYMPIA	SUR.:1*0.0115	Shielding Angle:

pcc	80%			70%			50%			30%			10%			0
pw	50%	30%	10%	50%	30%	10%	50%	30%	10%	50%	30%	10%	50%	30%	10%	0
pfc	20%			20%			20%			20%			20%			0
RCR	RCR:Room Cavity Ratio						Coefficients of Utilization(CU)									
0.0	1.19	1.19	1.19	1.16	1.16	1.16	1.10	1.10	1.10	1.05	1.05	1.05	1.01	1.01	1.01	.99
1.0	1.03	.99	.95	1.01	.97	.93	.96	.93	.90	.92	.90	.87	.88	.86	.84	.82
2.0	.90	.83	.77	.88	.82	.76	.84	.79	.74	.81	.76	.72	.77	.74	.70	.68
3.0	.79	.71	.64	.77	.70	.63	.74	.67	.62	.71	.66	.61	.68	.64	.60	.57
4.0	.70	.61	.54	.68	.60	.54	.66	.59	.53	.63	.57	.52	.61	.56	.51	.49
5.0	.62	.53	.47	.61	.53	.46	.59	.51	.46	.57	.50	.45	.55	.49	.44	.42
6.0	.56	.47	.41	.55	.47	.40	.53	.46	.40	.51	.45	.40	.50	.44	.39	.37
7.0	.51	.42	.36	.50	.42	.36	.48	.41	.35	.47	.40	.35	.45	.39	.35	.33
8.0	.46	.38	.32	.46	.38	.32	.44	.37	.32	.43	.36	.31	.42	.36	.31	.29
9.0	.43	.34	.29	.42	.34	.29	.41	.33	.28	.40	.33	.28	.38	.32	.28	.26
10.0	.39	.31	.26	.39	.31	.26	.38	.31	.26	.37	.30	.26	.36	.30	.25	.24



C Range: 0 - 360DEG  
 C Interval: 30.0DEG  
 Test Speed: HIGH  
 Temperature:25.3DEG  
 Operators:LPC  
 Test Date:2021-12-23

γ Range: 0 - 120DEG  
 γ Interval: 1.0DEG  
 Test System:EVERFINE GO-2000B\_V1 SYSTEM V2.0.362  
 Humidity:65.0%  
 Test Distance:9.200m [K=1.0000]  
 Remarks:

## WEC AND CCEC

Test:U:24.00V I:0.3080A P:7.392W PF:1.000 Freq:50.00Hz Lamp Flux:142.549x1 lm		
NAME: SF15-24V-2835-120-3000+6000-80-3000	TYPE: 硅胶	WEIGHT:
SPEC.:	DIM.: 21mm*11.5mm	SERIAL No.:2021122314
MFR.: OLYMPIA	SUR.:1*0.0115	Shielding Angle:

pcc	80%			70%			50%			30%			10%			0	
pw	50%	30%	10%	50%	30%	10%	50%	30%	10%	50%	30%	10%	50%	30%	10%	0	
pfc	20%			20%			20%			20%			20%			0	
RCR	RCR:Room Cavity Ratio						Wall Exitance Coeffcients (WEC)										
0.0																	
1.0	.314	.178	.057	.306	.175	.055	.292	.168	.054	.279	.161	.052	.267	.155	.050		
2.0	.293	.161	.049	.287	.158	.049	.274	.153	.047	.263	.147	.046	.252	.143	.045		
3.0	.271	.144	.043	.265	.142	.043	.254	.138	.042	.244	.133	.041	.234	.130	.040		
4.0	.249	.130	.038	.244	.128	.038	.234	.124	.037	.225	.121	.037	.217	.118	.036		
5.0	.230	.117	.034	.226	.116	.034	.217	.113	.033	.209	.110	.033	.201	.108	.032		
6.0	.214	.107	.031	.209	.106	.030	.202	.103	.030	.194	.101	.030	.188	.099	.029		
7.0	.199	.098	.028	.195	.097	.028	.188	.095	.027	.181	.093	.027	.175	.091	.027		
8.0	.185	.091	.025	.182	.090	.025	.176	.088	.025	.170	.086	.025	.164	.084	.025		
9.0	.174	.084	.023	.171	.083	.023	.165	.082	.023	.160	.080	.023	.155	.079	.023		
10.0	.163	.078	.022	.161	.078	.022	.156	.076	.021	.151	.075	.021	.146	.074	.021		

pcc	80%			70%			50%			30%			10%			0
pw	50%	30%	10%	50%	30%	10%	50%	30%	10%	50%	30%	10%	50%	30%	10%	0
pfc	20%			20%			20%			20%			20%			0
RCR	RCR:Room Cavity Ratio						Ceiling Cavity Exitance Coefficients(CCEC)									
0.0	.201	.201	.201	.172	.172	.172	.117	.117	.117	.067	.067	.067	.022	.022	.022	
1.0	.191	.167	.145	.164	.143	.125	.112	.098	.086	.064	.057	.050	.021	.018	.016	
2.0	.183	.143	.109	.157	.123	.094	.108	.085	.065	.062	.049	.038	.020	.016	.013	
3.0	.175	.125	.085	.150	.108	.074	.103	.075	.052	.060	.044	.030	.019	.014	.010	
4.0	.168	.112	.069	.144	.097	.060	.099	.067	.042	.057	.039	.025	.018	.013	.008	
5.0	.160	.102	.058	.138	.088	.051	.095	.061	.036	.055	.036	.021	.018	.012	.007	
6.0	.153	.093	.050	.132	.081	.044	.091	.056	.031	.053	.033	.018	.017	.011	.006	
7.0	.146	.086	.044	.126	.075	.039	.087	.052	.027	.051	.031	.016	.016	.010	.005	
8.0	.140	.080	.040	.120	.070	.035	.083	.049	.025	.048	.029	.015	.016	.009	.005	
9.0	.134	.076	.036	.115	.066	.032	.080	.046	.022	.047	.027	.013	.015	.009	.004	
10.0	.128	.071	.033	.110	.062	.029	.077	.044	.021	.045	.026	.012	.014	.008	.004	

C Range: 0 - 360DEG  
 C Interval: 30.0DEG  
 Test Speed: HIGH  
 Temperature:25.3DEG  
 Operators:LPC  
 Test Date:2021-12-23

γ Range: 0 - 120DEG  
 γ Interval: 1.0DEG  
 Test System:EVERFINE GO-2000B\_V1 SYSTEM V2.0.362  
 Humidity:65.0%  
 Test Distance:9.200m [K=1.0000]  
 Remarks:



### UTILIZATION FACTORS TABLE

Test:U:24.00V I:0.3080A P:7.392W PF:1.000 Freq:50.00Hz Lamp Flux:142.549x1 lm		
NAME: SF15-24V-2835-120-3000+6000-80-3000	TYPE: 硅胶	WEIGHT:
SPEC.:	DIM.: 21mm*11.5mm	SERIAL No.:2021122314
MFR.: OLYMPIA	SUR.:1*0.0115	Shielding Angle:

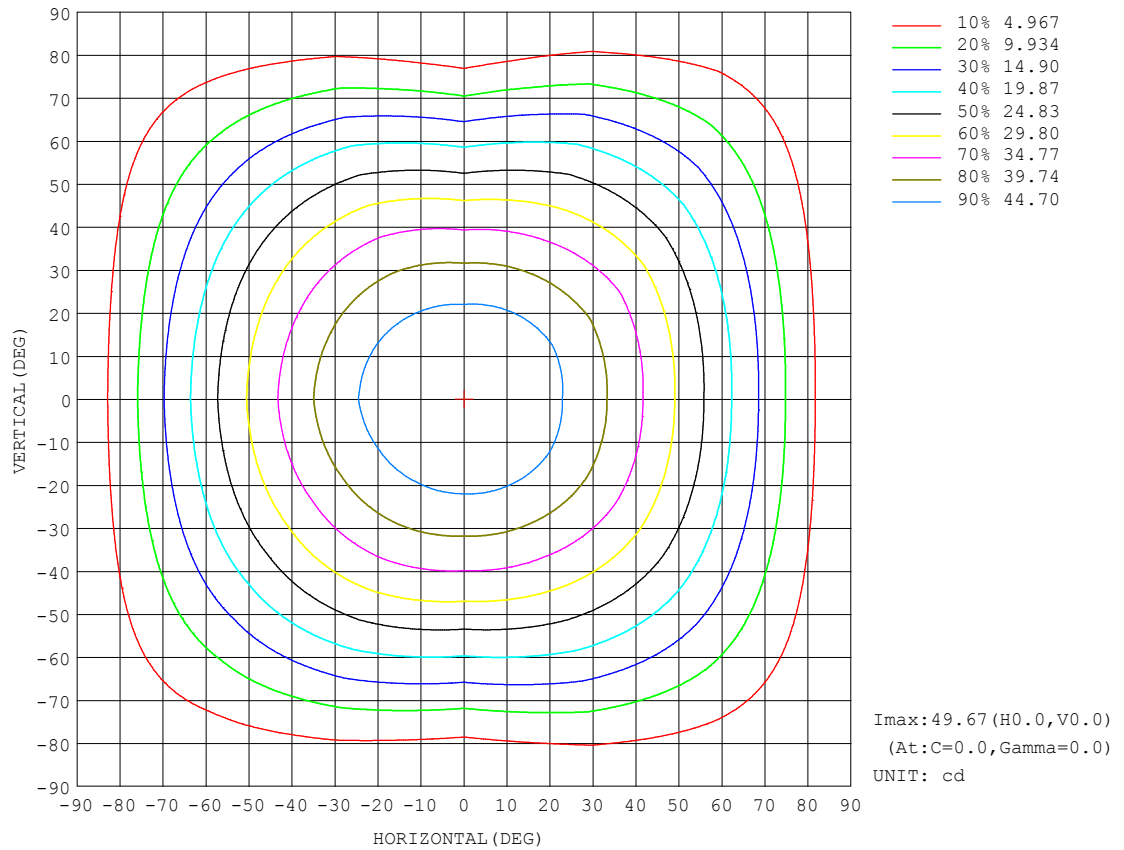
REFLECTANCE										
Ceiling	0.8	0.8	0.8	0.7	0.7	0.7	0.5	0.5	0.5	0
Walls	0.7	0.5	0.3	0.7	0.5	0.3	0.7	0.5	0.3	0
Working plane	0.2	0.2	0.2	0.2	0.2	0.2	0.2	0.2	0.2	0
ROOM INDEX	UTILIZATION FACTORS (PERCENT) $k(RI) \times RCR = 5$									
$k = 0.60$	57	45	38	56	45	38	55	45	38	32
0.80	67	55	48	66	55	48	64	54	47	40
1.00	75	64	57	74	63	56	72	65	56	49
1.25	82	72	65	81	71	64	78	69	63	56
1.50	87	77	70	86	76	70	82	75	69	61
2.00	94	86	79	92	84	78	89	82	77	68
2.50	98	90	84	96	89	83	92	86	81	73
3.00	102	95	89	99	93	88	95	90	85	77
4.00	106	100	95	103	98	94	99	94	91	81
5.00	108	103	99	105	101	97	101	97	94	84
ROOM INDEX	UF (total)									Direct
According to DIN EN 13032-2 2004			Suspended					SHRNOM = 1.25		

C Range: 0 - 360DEG  
C Interval: 30.0DEG  
Test Speed: HIGH  
Temperature:25.3DEG  
Operators:LPC  
Test Date:2021-12-23

$\gamma$  Range: 0 - 120DEG  
 $\gamma$  Interval: 1.0DEG  
Test System:EVERFINE GO-2000B\_V1 SYSTEM V2.0.362  
Humidity:65.0%  
Test Distance:9.200m [K=1.0000]  
Remarks:

## ISOCANDELA DIAGRAM

Test:U:24.00V I:0.3080A P:7.392W PF:1.000 Freq:50.00Hz Lamp Flux:142.549x1 lm		
NAME: SF15-24V-2835-120-3000+6000-80-3000	TYPE: 硅胶	WEIGHT:
SPEC.:	DIM.: 21mm*11.5mm	SERIAL No.:2021122314
MFR.: OLYMPIA	SUR.:1*0.0115	Shielding Angle:

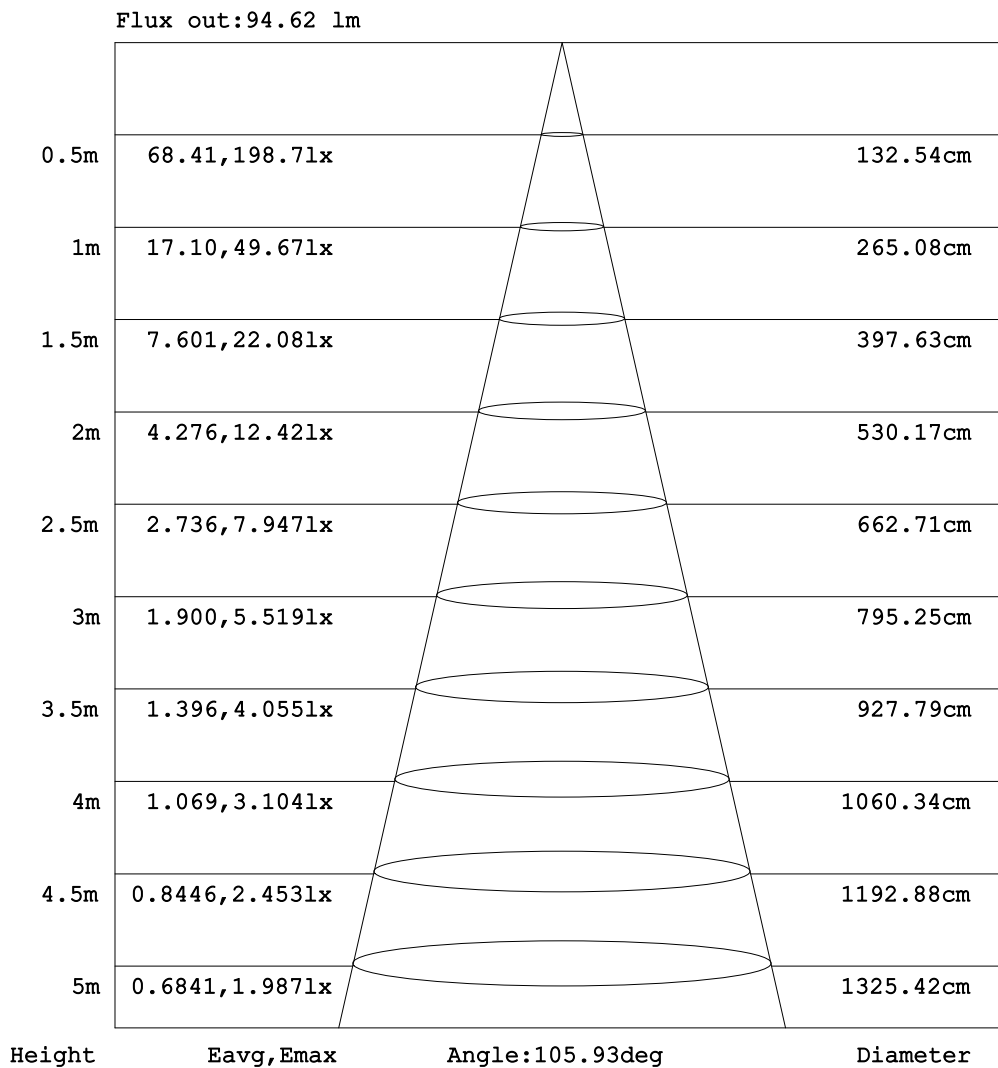


C Range: 0 - 360DEG  
C Interval: 30.0DEG  
Test Speed: HIGH  
Temperature:25.3DEG  
Operators:LPC  
Test Date:2021-12-23

$\gamma$  Range: 0 - 120DEG  
 $\gamma$  Interval: 1.0DEG  
Test System:EVERFINE GO-2000B\_V1 SYSTEM V2.0.362  
Humidity:65.0%  
Test Distance:9.200m [K=1.0000]  
Remarks:

### AAI Figure

Test:U:24.00V I:0.3080A P:7.392W PF:1.000 Freq:50.00Hz Lamp Flux:142.549x1 lm		
NAME: SF15-24V-2835-120-3000+6000-80-3000	TYPE: 硅胶	WEIGHT:
SPEC.:	DIM.: 21mm*11.5mm	SERIAL No.:2021122314
MFR.: OLYMPIA	SUR.:1*0.0115	Shielding Angle:



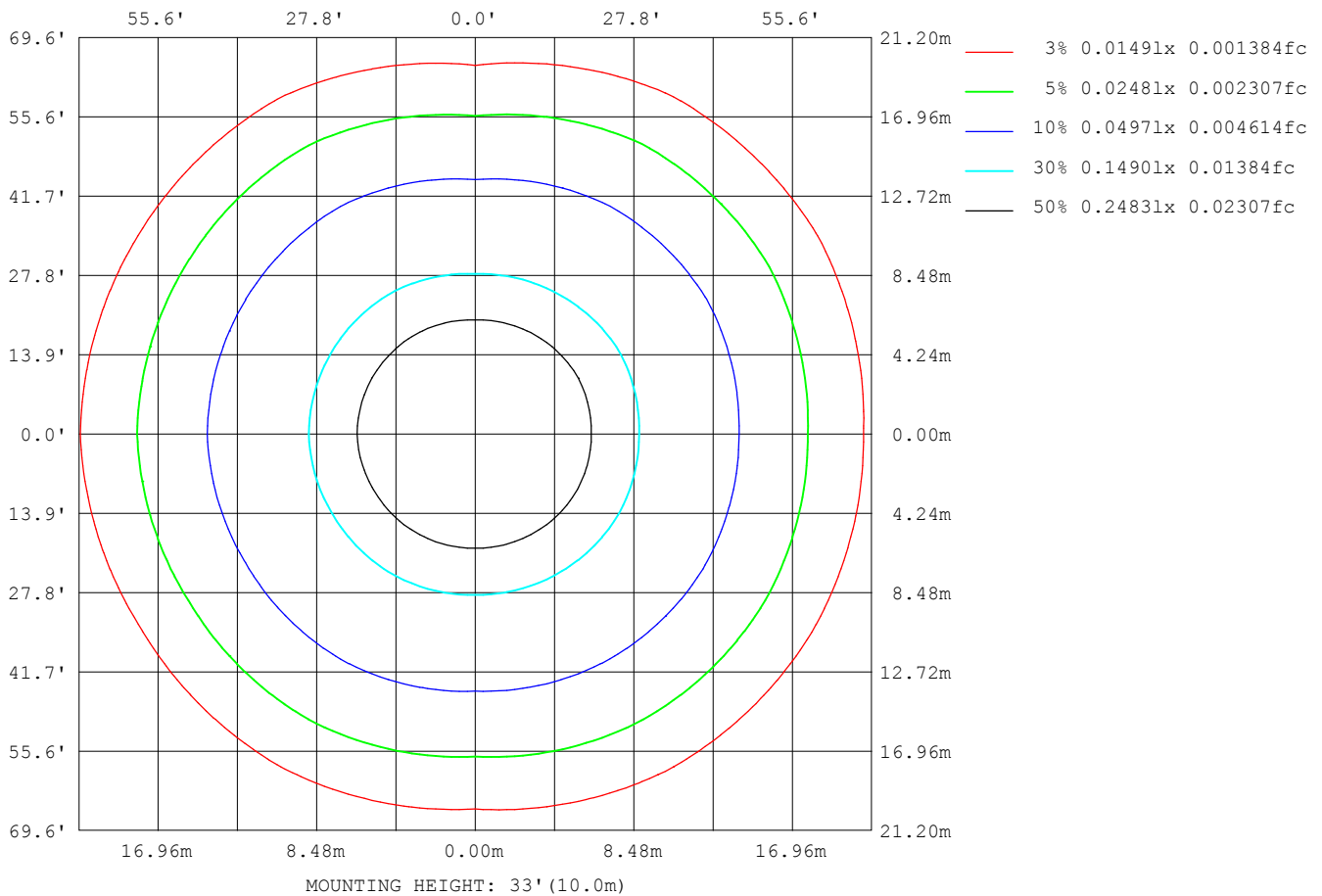
Note: The Curves indicate the illuminated area and the average illumination when the luminaire is at different distance.

C Range: 0 - 360DEG  
C Interval: 30.0DEG  
Test Speed: HIGH  
Temperature:25.3DEG  
Operators:LPC  
Test Date:2021-12-23

γ Range: 0 - 120DEG  
γ Interval: 1.0DEG  
Test System:EVERFINE GO-2000B\_V1 SYSTEM V2.0.362  
Humidity:65.0%  
Test Distance:9.200m [K=1.0000]  
Remarks:

## ISOLUX DIAGRAM

Test:U:24.00V I:0.3080A P:7.392W PF:1.000 Freq:50.00Hz Lamp Flux:142.549x1 lm		
NAME: SF15-24V-2835-120-3000+6000-80-3000	TYPE: 硅胶	WEIGHT:
SPEC.:	DIM.: 21mm*11.5mm	SERIAL No.:2021122314
MFR.: OLYMPIA	SUR.:1*0.0115	Shielding Angle:



C Range: 0 - 360DEG  
C Interval: 30.0DEG  
Test Speed: HIGH  
Temperature:25.3DEG  
Operators:LPC  
Test Date:2021-12-23

$\gamma$  Range: 0 - 120DEG  
 $\gamma$  Interval: 1.0DEG  
Test System:EVERFINE GO-2000B\_V1 SYSTEM V2.0.362  
Humidity:65.0%  
Test Distance:9.200m [K=1.0000]  
Remarks:

## LED Avg.L Report

Test:U:24.00V I:0.3080A P:7.392W PF:1.000 Freq:50.00Hz Lamp Flux:142.549x1 lm		
NAME: SF15-24V-2835-120-3000+6000-80-3000	TYPE:硅胶	WEIGHT:
SPEC.:	DIM.: 21mm*11.5mm	SERIAL No.:2021122314
MFR.: OLYMPIA	SUR.:1*0.0115	Shielding Angle:

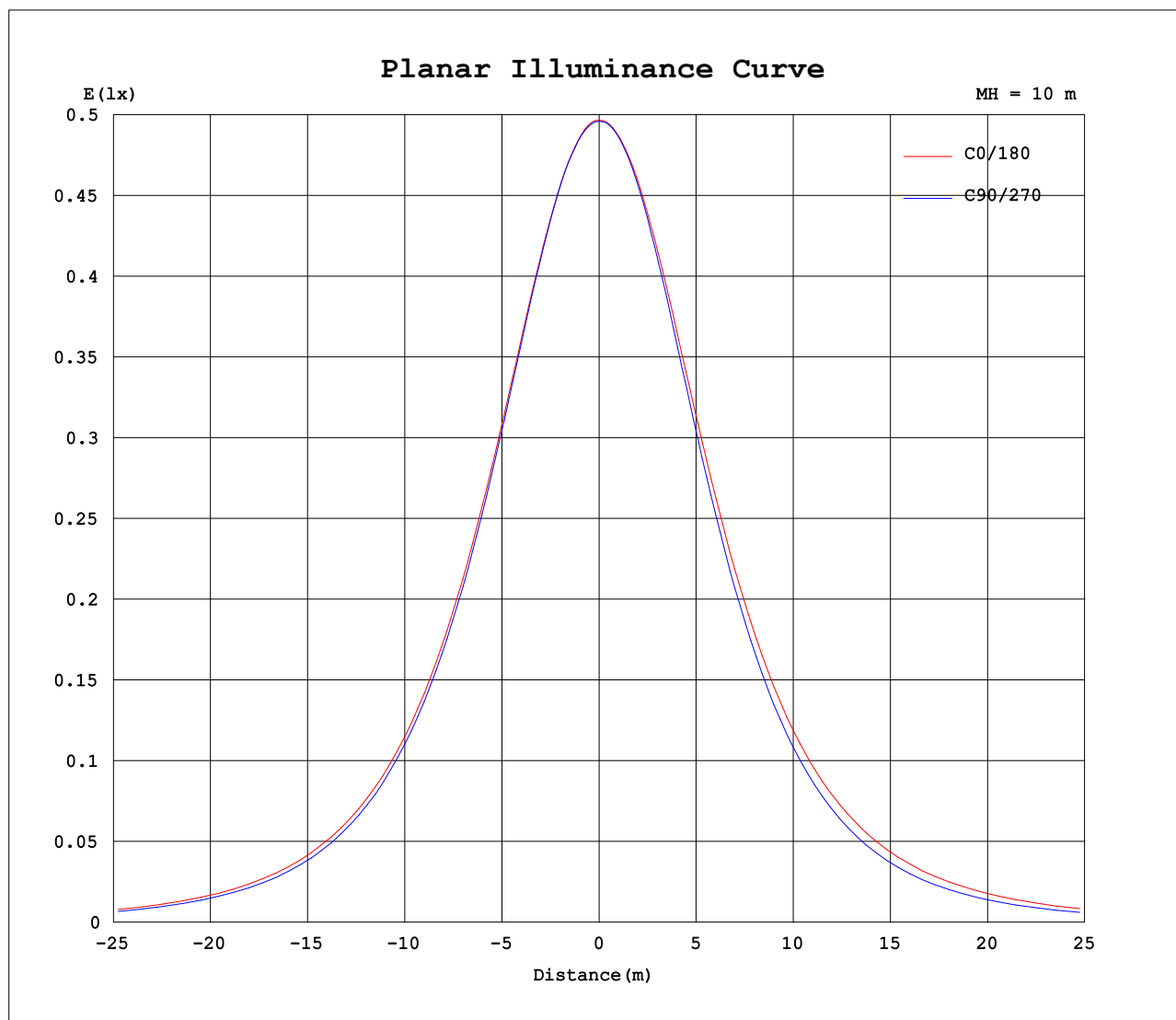
AvgL	cd/m2
L_0~180 (65) av	3749
L_0~180 (75) av	3429
L_0~180 (85) av	3482
L_90~270 (65) av	3089
L_90~270 (75) av	2331
L_90~270 (85) av	877
L_45 (65) av	3715
L_45 (75) av	3384
L_45 (85) av	3101

Standard: GB/T 29293-2012

C Range: 0 - 360DEG  
C Interval: 30.0DEG  
Test Speed: HIGH  
Temperature:25.3DEG  
Operators:LPC  
Test Date:2021-12-23

γ Range: 0 - 120DEG  
γ Interval: 1.0DEG  
Test System:EVERFINE GO-2000B\_V1 SYSTEM V2.0.362  
Humidity:65.0%  
Test Distance:9.200m [K=1.0000]  
Remarks:

## Planar Illuminance Curve



C Range: 0 - 360DEG  
C Interval: 30.0DEG  
Test Speed: HIGH  
Temperature: 25.3DEG  
Operators: LPC  
Test Date: 2021-12-23

$\gamma$  Range: 0 - 120DEG  
 $\gamma$  Interval: 1.0DEG  
Test System: EVERFINE GO-2000B\_V1 SYSTEM V2.0.362  
Humidity: 65.0%  
Test Distance: 9.200m [K=1.0000]  
Remarks:

## LUMINOUS DISTRIBUTION INTENSITY DATA

Test:U:24.00V I:0.3080A P:7.392W PF:1.000 Freq:50.00Hz Lamp Flux:142.549x1 lm		
NAME: SF15-24V-2835-120-3000+6000-80-3000	TYPE: 硅胶	WEIGHT:
SPEC.:	DIM.: 21mm*11.5mm	SERIAL No.:2021122314
MFR.: OLYMPIA	SUR.:1*0.0115	Shielding Angle:

Table--1

UNIT: cd

C (DEG) γ (DEG)	0	30	60	90	120	150	180	210	240	270	300	330						
0	49.7	49.6	49.6	49.6	49.6	49.6	49.7	49.6	49.6	49.6	49.6	49.6						
5	49.4	49.4	49.4	49.3	49.3	49.3	49.5	49.5	49.4	49.4	49.4	49.5						
10	48.6	48.7	48.8	48.6	48.5	48.5	48.9	48.8	48.7	48.7	48.8	48.9						
15	47.4	47.6	47.5	47.3	47.2	47.3	47.8	47.7	47.5	47.4	47.6	47.8						
20	45.8	46.0	45.7	45.5	45.5	45.8	46.4	46.1	45.8	45.6	45.9	46.3						
25	43.8	43.9	43.6	43.3	43.5	43.7	44.5	44.2	43.8	43.3	43.8	44.3						
30	41.5	41.6	41.1	40.8	41.1	41.4	42.3	41.9	41.4	40.7	41.3	41.9						
35	38.8	38.8	38.3	37.8	38.4	38.7	39.7	39.3	38.8	37.6	38.4	39.4						
40	35.8	35.9	35.1	34.7	35.4	35.7	36.8	36.4	35.8	34.3	35.3	36.6						
45	32.5	32.7	31.9	31.2	32.2	32.5	33.6	33.2	32.6	30.7	32.1	33.5						
50	29.1	29.3	28.5	27.5	28.7	29.0	30.2	29.7	29.2	26.8	28.9	30.1						
55	25.4	25.7	25.0	23.6	25.0	25.3	26.6	26.1	25.6	22.8	25.6	26.5						
60	21.6	22.0	21.3	19.6	21.2	21.4	22.7	22.2	21.7	18.7	22.0	22.7						
65	17.7	18.1	17.6	15.6	17.2	17.4	18.8	18.1	17.7	14.5	18.1	18.9						
70	13.7	14.1	13.7	11.5	13.2	13.4	14.7	14.0	13.7	10.3	14.2	14.9						
75	9.76	10.2	9.85	7.50	9.17	9.40	10.6	9.91	9.56	6.37	10.3	10.9						
80	6.09	6.41	6.14	3.96	5.44	5.72	6.85	6.13	5.70	2.95	6.45	7.05						
85	3.22	3.29	2.95	1.18	2.46	2.92	3.76	3.14	2.50	0.58	3.06	3.73						
90	1.55	1.48	1.14	0.45	1.00	1.29	1.65	1.32	0.80	0.24	1.01	1.65						
95	0.80	0.80	0.76	0.49	0.83	0.83	0.67	0.67	0.55	0.24	0.65	0.75						
100	0.68	0.70	0.75	0.53	0.83	0.82	0.51	0.62	0.54	0.27	0.58	0.53						
105	0.67	0.73	0.74	0.59	0.76	0.82	0.40	0.61	0.47	0.34	0.49	0.53						
110	0.69	0.75	0.75	0.62	0.75	0.83	0.28	0.51	0.56	0.36	0.56	0.57						
115	0.70	0.67	0.79	0.65	0.79	0.65	0.16	0.28	0.33	0.38	0.58	0.61						
120	0.71	0.19	0.32	0.22	0.83	0.19	0.05	0.05	0.09	0.46	0.54	0.64						
125	0.00	0.00	0.00	0.00	0.00	0.00	0.00	0.00	0.00	0.00	0.00	0.00						
130	0.00	0.00	0.00	0.00	0.00	0.00	0.00	0.00	0.00	0.00	0.00	0.00						
135	0.00	0.00	0.00	0.00	0.00	0.00	0.00	0.00	0.00	0.00	0.00	0.00						
140	0.00	0.00	0.00	0.00	0.00	0.00	0.00	0.00	0.00	0.00	0.00	0.00						
145	0.00	0.00	0.00	0.00	0.00	0.00	0.00	0.00	0.00	0.00	0.00	0.00						
150	0.00	0.00	0.00	0.00	0.00	0.00	0.00	0.00	0.00	0.00	0.00	0.00						
155	0.00	0.00	0.00	0.00	0.00	0.00	0.00	0.00	0.00	0.00	0.00	0.00						
160	0.00	0.00	0.00	0.00	0.00	0.00	0.00	0.00	0.00	0.00	0.00	0.00						
165	0.00	0.00	0.00	0.00	0.00	0.00	0.00	0.00	0.00	0.00	0.00	0.00						
170	0.00	0.00	0.00	0.00	0.00	0.00	0.00	0.00	0.00	0.00	0.00	0.00						
175	0.00	0.00	0.00	0.00	0.00	0.00	0.00	0.00	0.00	0.00	0.00	0.00						
180	0.00	0.00	0.00	0.00	0.00	0.00	0.00	0.00	0.00	0.00	0.00	0.00						

C Range: 0 - 360DEG  
C Interval: 30.0DEG  
Test Speed: HIGH  
Temperature:25.3DEG  
Operators:LPC  
Test Date:2021-12-23

γ Range: 0 - 120DEG  
γ Interval: 1.0DEG  
Test System:EVERFINE GO-2000B\_V1 SYSTEM V2.0.362  
Humidity:65.0%  
Test Distance:9.200m [K=1.0000]  
Remarks:

Photometric Data Table [cd]

G/C	0.0	30.0	60.0	90.0	120.0	150.0	180.0	210.0	240.0	270.0
0.0	49.67	49.63	49.62	49.60	49.59	49.61	49.67	49.63	49.62	49.60
3.0	49.59	49.55	49.60	49.50	49.51	49.48	49.62	49.60	49.53	49.57
6.0	49.29	49.30	49.32	49.23	49.19	49.19	49.42	49.36	49.30	49.33
9.0	48.82	48.86	48.92	48.82	48.73	48.74	49.04	48.95	48.87	48.91
12.0	48.20	48.27	48.29	48.14	48.08	48.09	48.52	48.38	48.25	48.25
15.0	47.44	47.55	47.48	47.31	47.24	47.35	47.84	47.69	47.47	47.40
18.0	46.51	46.71	46.49	46.31	46.26	46.43	47.02	46.81	46.51	46.42
21.0	45.42	45.56	45.35	45.11	45.14	45.41	46.03	45.76	45.41	45.14
24.0	44.26	44.39	44.05	43.83	43.89	44.20	44.91	44.63	44.18	43.84
27.0	42.88	43.01	42.65	42.36	42.54	42.89	43.65	43.33	42.84	42.25
30.0	41.46	41.56	41.10	40.79	41.07	41.43	42.28	41.89	41.41	40.68
33.0	39.89	39.98	39.42	39.07	39.47	39.86	40.77	40.37	39.86	38.90
36.0	38.21	38.29	37.64	37.25	37.78	38.11	39.14	38.75	38.19	37.02
39.0	36.41	36.49	35.78	35.30	36.01	36.38	37.41	36.95	36.44	34.98
42.0	34.52	34.69	33.85	33.33	34.12	34.50	35.57	35.09	34.58	32.87
45.0	32.55	32.73	31.90	31.23	32.17	32.47	33.63	33.15	32.63	30.68
48.0	30.50	30.70	29.88	29.01	30.11	30.45	31.61	31.07	30.60	28.38
51.0	28.37	28.64	27.83	26.78	27.98	28.28	29.50	28.98	28.50	26.01
54.0	26.18	26.41	25.70	24.38	25.79	26.07	27.30	26.75	26.31	23.62
57.0	23.92	24.25	23.52	22.07	23.52	23.77	25.05	24.46	24.06	21.15
60.0	21.64	21.97	21.34	19.62	21.21	21.44	22.72	22.18	21.74	18.65
63.0	19.30	19.58	19.10	17.16	18.85	19.03	20.34	19.77	19.35	16.15
66.0	16.92	17.29	16.82	14.75	16.40	16.63	17.94	17.30	16.94	13.65
69.0	14.50	14.87	14.47	12.26	13.98	14.18	15.50	14.82	14.47	11.14
72.0	12.11	12.49	12.16	9.827	11.58	11.76	13.05	12.46	12.00	8.703
75.0	9.764	10.18	9.854	7.502	9.170	9.397	10.65	9.909	9.562	6.375
78.0	7.496	7.854	7.557	5.351	6.878	7.105	8.325	7.647	7.200	4.158
81.0	5.414	5.688	5.439	3.281	4.751	5.065	6.170	5.474	4.983	2.442
84.0	3.690	3.819	3.515	1.668	2.941	3.402	4.296	3.670	3.049	0.9794
87.0	2.411	2.404	1.980	0.5871	1.662	2.113	2.780	2.291	1.610	0.2874
90.0	1.550	1.476	1.143	0.4474	0.9967	1.290	1.646	1.319	0.8027	0.2366
93.0	1.012	0.9437	0.8048	0.4675	0.8444	0.8841	0.9432	0.8003	0.5578	0.2364
96.0	0.7345	0.7785	0.7606	0.4927	0.8332	0.8291	0.6077	0.6585	0.5479	0.2362
99.0	0.6780	0.7036	0.7550	0.5177	0.8298	0.8217	0.5376	0.6333	0.5401	0.2511
102.0	0.6760	0.7137	0.7495	0.5682	0.8265	0.8144	0.4675	0.6113	0.5323	0.3163
105.0	0.6741	0.7258	0.7439	0.5860	0.7645	0.8213	0.3973	0.6057	0.4724	0.3391
108.0	0.6785	0.7289	0.7228	0.6037	0.7350	0.8282	0.3272	0.6000	0.5129	0.3578
111.0	0.6945	0.7589	0.7584	0.6215	0.7586	0.8351	0.2571	0.4615	0.5162	0.3681
114.0	0.6963	0.7690	0.7890	0.6433	0.7890	0.7464	0.1870	0.3231	0.3754	0.3784
117.0	0.6980	0.4806	0.7941	0.5445	0.8101	0.4665	0.1169	0.1846	0.2347	0.3970
120.0	0.7137	0.1923	0.3177	0.2178	0.8343	0.1866	0.0467	0.0462	0.0939	0.4574
G/C	300.0	330.0								
0.0	49.59	49.61								
3.0	49.55	49.62								
6.0	49.36	49.44								
9.0	48.98	49.07								
12.0	48.40	48.53								
15.0	47.63	47.83								
18.0	46.66	46.96								
21.0	45.53	45.90								
24.0	44.25	44.68								
27.0	42.83	43.35								
30.0	41.28	41.89								
33.0	39.59	40.38								
36.0	37.79	38.84								
39.0	35.94	37.20								
42.0	34.01	35.38								
45.0	32.05	33.48								
48.0	30.16	31.47								
51.0	28.25	29.39								
54.0	26.31	27.26								
57.0	24.19	25.02								
60.0	21.96	22.72								
63.0	19.66	20.45								
66.0	17.34	18.09								
69.0	14.99	15.70								
72.0	12.62	13.30								
75.0	10.26	10.91								
78.0	7.938	8.556								
81.0	5.707	6.324								
84.0	3.672	4.299								
87.0	2.001	2.729								
90.0	1.013	1.651								

C Range: 0 - 360DEG  
 C Interval: 30.0DEG  
 Test Speed: HIGH  
 Temperature: 25.3DEG  
 Operators: LPC  
 Test Date: 2021-12-23

γ Range: 0 - 120DEG  
 γ Interval: 1.0DEG  
 Test System: EVERFINE GO-2000B\_V1 SYSTEM V2.0.362  
 Humidity: 65.0%  
 Test Distance: 9.200m [K=1.0000]  
 Remarks:

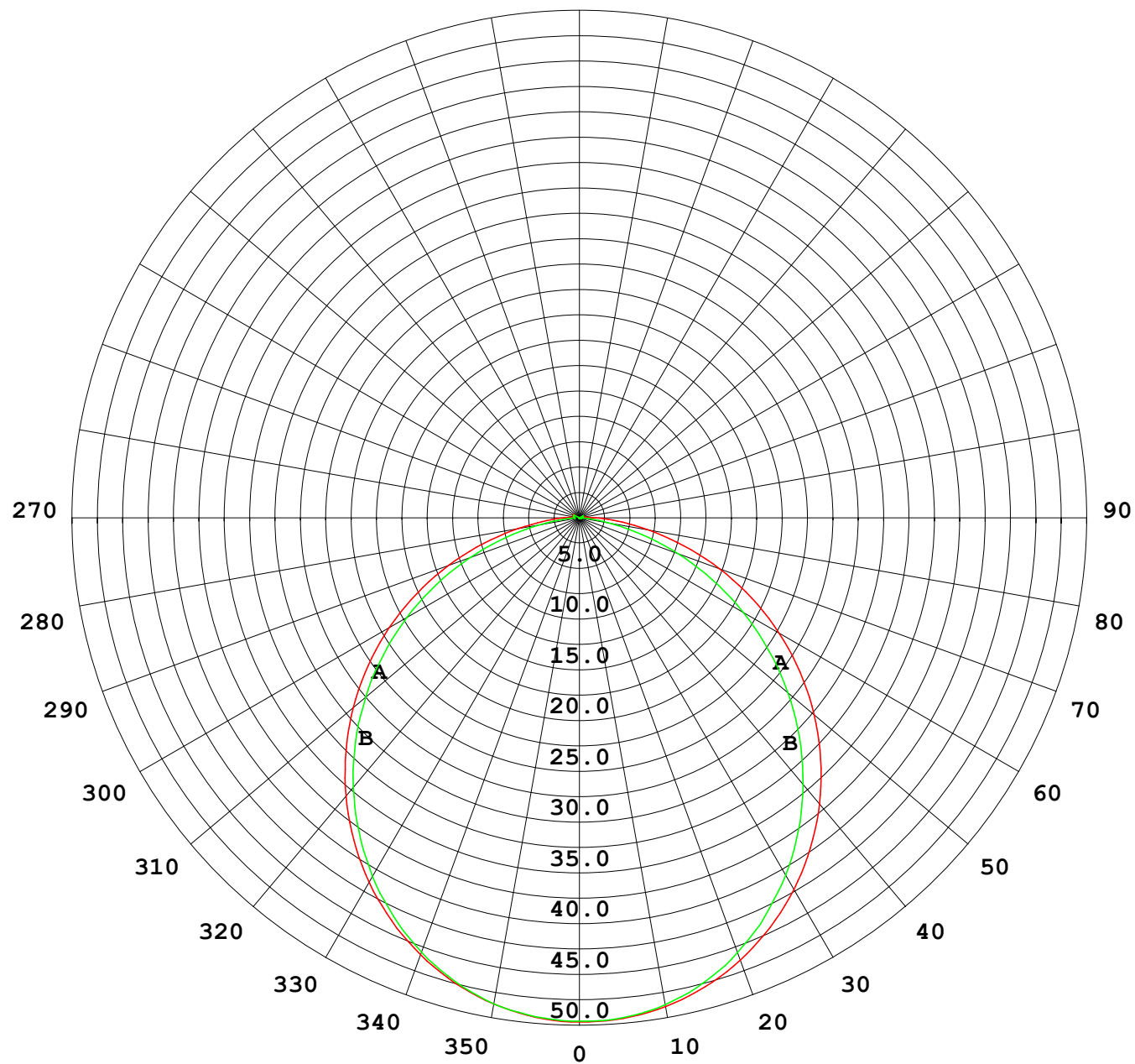
## Photometric Data Table [cd]

93.0	0.6781	1.007
96.0	0.6347	0.6643
99.0	0.5912	0.5630
102.0	0.5478	0.5127
105.0	0.4874	0.5327
108.0	0.5231	0.5527
111.0	0.5650	0.5729
114.0	0.5752	0.6080
117.0	0.5855	0.6111
120.0	0.5377	0.6383

C Range: 0 - 360DEG  
C Interval: 30.0DEG  
Test Speed: HIGH  
Temperature: 25.3DEG  
Operators: LPC  
Test Date: 2021-12-23

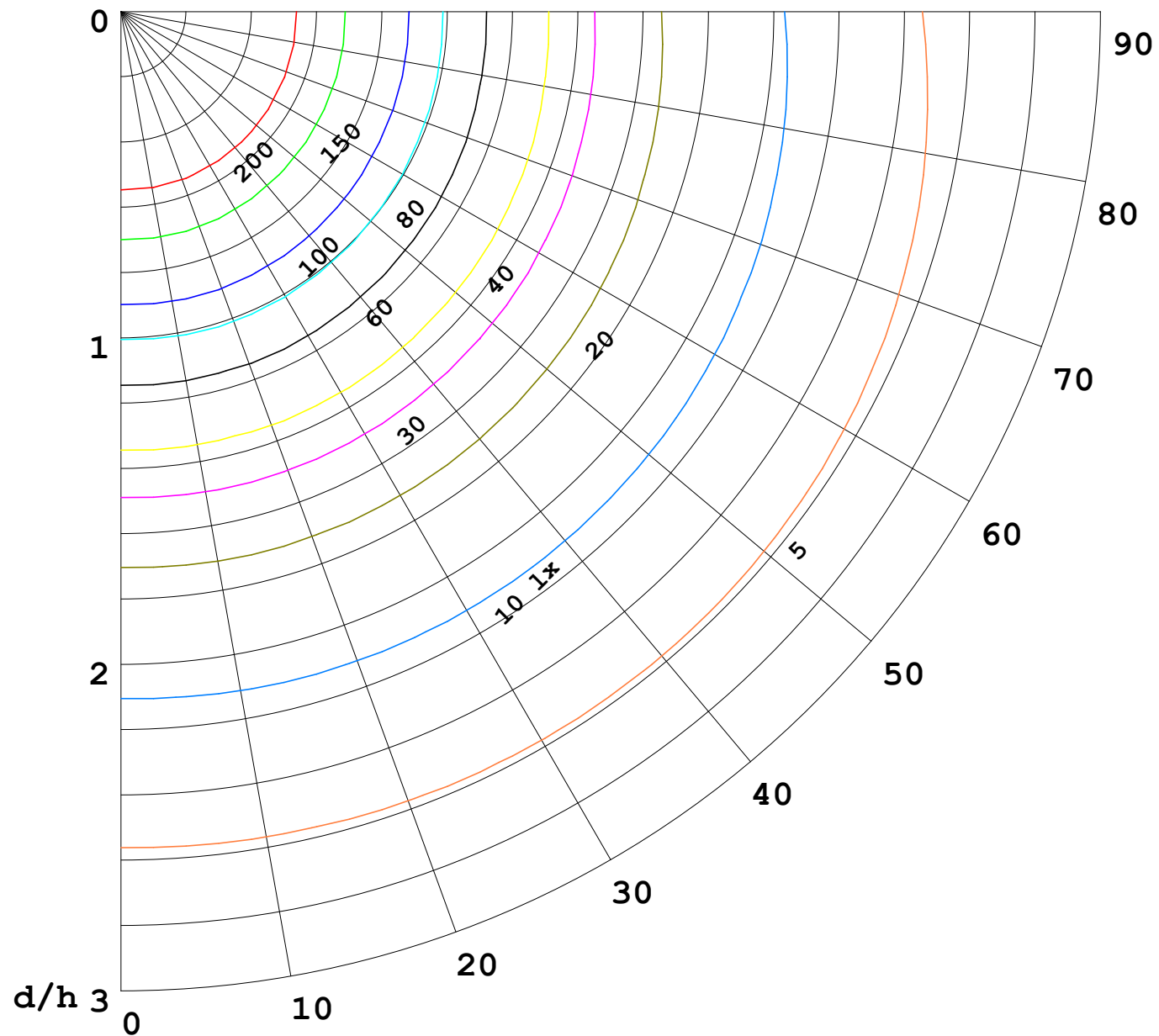
γ Range: 0 - 120DEG  
γ Interval: 1.0DEG  
Test System: EVERFINE GO-2000B\_V1 SYSTEM V2.0.362  
Humidity: 65.0%  
Test Distance: 9.200m [K=1.0000]  
Remarks:

I (cd)



1000 lm

$\kappa = 1$



F = 5000 lm  
 K = 0.7  
 Hcc = 0.0 m  
 Hfc = 0.0 m  
 Eave = 100 lx

	Pcc	Pw	Pfc
—	70	50	30
—	50	30	20

