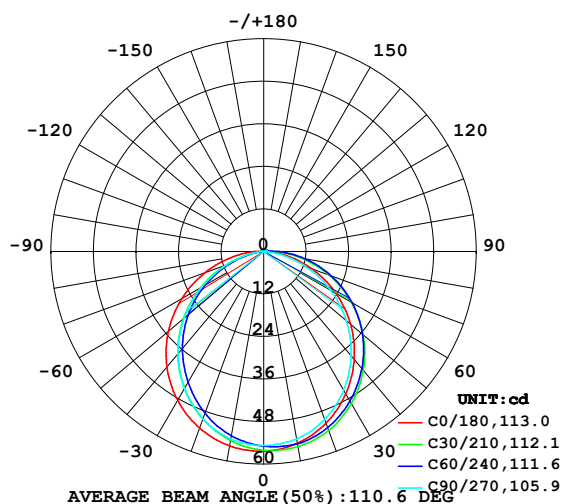


LUMINAIRE PHOTOMETRIC TEST REPORT

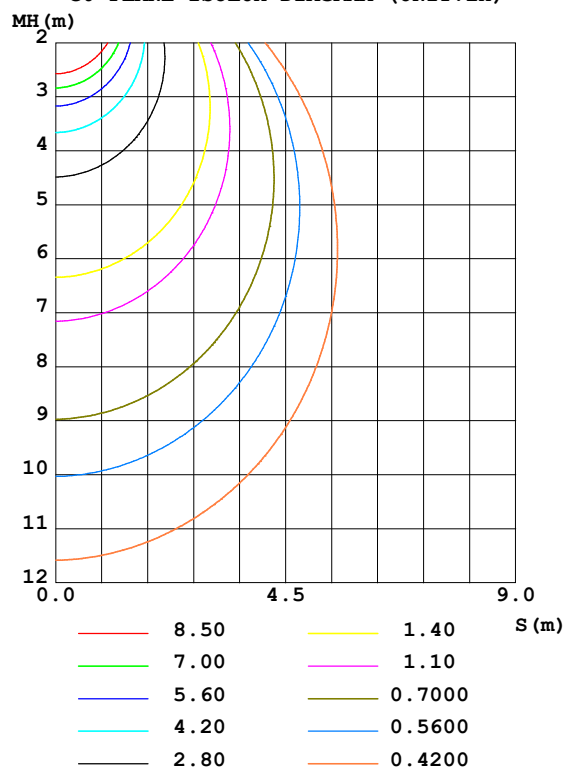
Test:U:24.00V I:0.3301A P:7.922W PF:1.000 Freq:50.00Hz Lamp Flux:160.708x1 lm		
NAME: SF15-24V-2835-120-2200+5700-80-5700	TYPE: 硅胶	WEIGHT:
SPEC.:	DIM.: 21mm*11.5mm	SERIAL No.:2021122309
MFR.: OLYMPIA	SUR.:1*0.0115	Shielding Angle:

DATA OF LAMP		PHOTOMETRIC DATA Eff: 20.29 lm/W			
MODEL	2835	I _{max} (cd)	56.34	S/MH (C0/180)	1.28
NOMINAL POWER (W)	7.5	LOR (%)	100.0	S/MH (C90/270)	1.22
RATED VOLTAGE (V)	24	TOTAL FLUX (lm)	160.71	η UP, DN (C0-180)	0.9, 47.4
NOMINAL FLUX (lm)	160.708	CIE CLASS	DIRECT	η UP, DN (C180-360)	0.9, 50.8
LAMPS INSIDE	1	η up (%)	1.8	CIBSE SHR NOM	1.25
TEST VOLTAGE (V)	24	η down (%)	98.2	CIBSE SHR MAX	1.35

LUMINOUS INTENSITY DISTRIBUTION DIAGRAM



C0 PLANE ISOLUX DIAGRAM (UNIT: lx)



C Range: 0 - 360DEG
 C Interval: 30.0DEG
 Test Speed: HIGH
 Temperature: 25.3DEG
 Operators: LPC
 Test Date: 2021-12-23

γ Range: 0 - 120DEG
 γ Interval: 1.0DEG
 Test System: EVERFINE GO-2000B_V1 SYSTEM V2.0.362
 Humidity: 65.0%
 Test Distance: 9.200m [K=1.0000]
 Remarks:

ZONAL FLUX DIAGRAM

ZONAL FLUX DIAGRAM:

γ	C0	C45	C90	C135	C180	C225	C270	C315	γ	Φ zone	Φ total	%lum, lamp
10	54.92	55.48	53.70	52.04	55.66	53.47	53.70	55.42	0- 10	5.226	5.226	3.25,3.25
20	51.50	53.30	50.39	47.40	53.02	49.37	50.25	53.84	10- 20	14.93	20.15	12.5,12.5
30	46.36	49.10	45.20	41.25	48.54	43.62	44.73	50.24	20- 30	22.48	42.63	26.5,26.5
40	39.77	43.42	38.40	33.97	42.50	36.64	37.64	45.20	30- 40	26.94	69.58	43.3,43.3
50	32.04	36.51	30.45	25.74	35.13	28.69	29.34	39.02	40- 50	27.85	97.43	60.6,60.6
60	23.48	28.63	21.76	16.93	26.77	19.89	20.25	31.50	50- 60	25.14	122.6	76.3,76.3
70	14.51	20.01	12.75	8.228	17.73	10.77	11.12	23.15	60- 70	19.24	141.8	88.2,88.2
80	6.078	11.17	4.365	2.069	8.751	3.134	3.017	14.25	70- 80	11.44	153.3	95.4,95.4
90	1.545	3.479	0.5881	0.9358	2.353	0.7137	0.2681	5.763	80- 90	4.584	157.8	98.2,98.2
100	0.8201	0.9029	0.6887	0.9269	0.6536	0.6507	0.2964	1.151	90-100	1.419	159.3	99.1,99.1
110	0.8508	0.8191	0.7389	0.9205	0.5719	0.6781	0.4484	0.6440	100-110	0.7863	160.0	99.6,99.6
120	0.8946	0.5115	0.2425	0.5672	0.0953	0.4313	0.4674	0.6006	110-120	0.6397	160.7	100,100
130	0	0	0	0	0	0	0	0	120-130	0.0266	160.7	100,100
140	0	0	0	0	0	0	0	0	130-140	0	160.7	100,100
150	0	0	0	0	0	0	0	0	140-150	0	160.7	100,100
160	0	0	0	0	0	0	0	0	150-160	0	160.7	100,100
170	0	0	0	0	0	0	0	0	160-170	0	160.7	100,100
180	0	0	0	0	0	0	0	0	170-180	0	160.7	100,100
DEG	LUMINOUS INTENSITY:cd									UNIT:lm		

Conical surface Flux(90deg): 83.617 lm

%lum = 52.0%

%lamp = 52.0%

Conical surface Flux(120deg): 122.57 lm

%lum = 76.3%

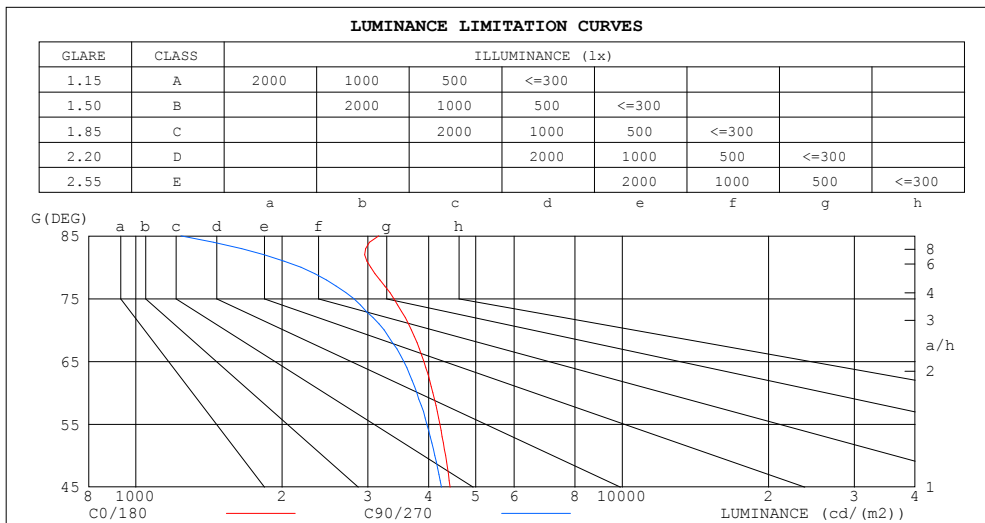
%lamp = 76.3%

C Range: 0 - 360DEG
 C Interval: 30.0DEG
 Test Speed: HIGH
 Temperature:25.3DEG
 Operators:LPC
 Test Date:2021-12-23

γ Range: 0 - 120DEG
 γ Interval: 1.0DEG
 Test System:EVERFINE GO-2000B_V1 SYSTEM V2.0.362
 Humidity:65.0%
 Test Distance:9.200m [K=1.0000]
 Remarks:

LUMINANCE LIMITATION CURVES

Test:U:24.00V I:0.3301A P:7.922W PF:1.000 Freq:50.00Hz Lamp Flux:160.708x1 lm		
NAME: SF15-24V-2835-120-2200+5700-80-5700	TYPE: 硅胶	WEIGHT:
SPEC.:	DIM.: 21mm*11.5mm	SERIAL No.:2021122309
MFR.: OLYMPIA	SUR.:1*0.0115	Shielding Angle:



LUMINANCE cd/(m2)		
G (DEG)	C0/180	C90/270
85	3159	1239
80	3044	2186
75	3392	2809
70	3688	3242
65	3913	3554
60	4084	3785
55	4220	3968
50	4334	4119
45	4430	4249

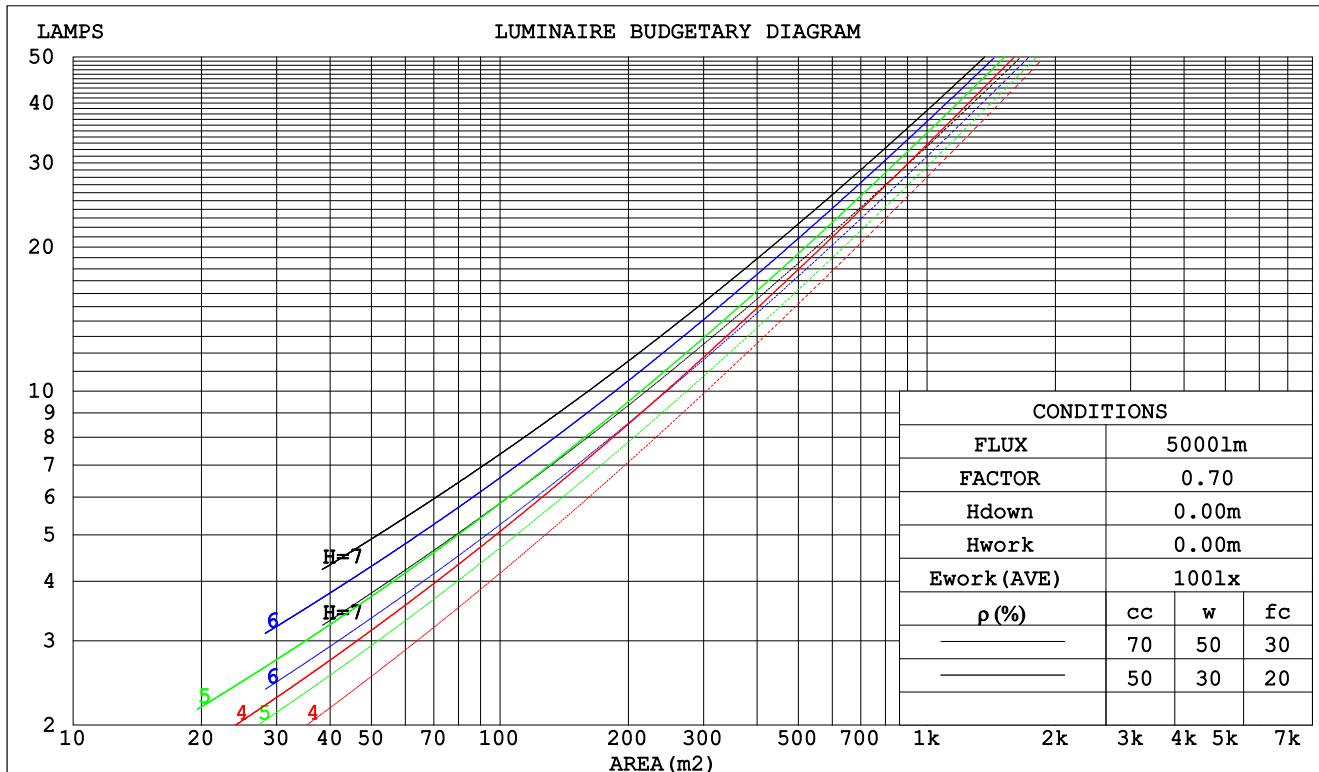
C Range: 0 - 360DEG
C Interval: 30.0DEG
Test Speed: HIGH
Temperature:25.3DEG
Operators:LPC
Test Date:2021-12-23

γ Range: 0 - 120DEG
γ Interval: 1.0DEG
Test System:EVERFINE GO-2000B_V1 SYSTEM V2.0.362
Humidity:65.0%
Test Distance:9.200m [K=1.0000]
Remarks:

CU AND LUMINAIRE BUDGETARY ESTIMATE DIAGRAM

Test:U:24.00V I:0.3301A P:7.922W PF:1.000 Freq:50.00Hz Lamp Flux:160.708x1 lm		
NAME: SF15-24V-2835-120-2200+5700-80-5700	TYPE: 硅胶	WEIGHT:
SPEC.:	DIM.: 21mm*11.5mm	SERIAL No.:2021122309
MFR.: OLYMPIA	SUR.:1*0.0115	Shielding Angle:

pcc	80%			70%			50%			30%			10%			0
pw	50%	30%	10%	50%	30%	10%	50%	30%	10%	50%	30%	10%	50%	30%	10%	0
pfc	20%			20%			20%			20%			20%			0
RCR	Coefficients of Utilization(CU)															
0.0	1.19	1.19	1.19	1.16	1.16	1.16	1.10	1.10	1.10	1.05	1.05	1.05	1.00	1.00	1.00	.98
1.0	1.03	.98	.94	1.00	.96	.93	.96	.93	.89	.92	.89	.86	.88	.86	.84	.81
2.0	.90	.83	.77	.87	.81	.76	.84	.78	.74	.80	.76	.72	.77	.73	.70	.67
3.0	.79	.70	.64	.77	.69	.63	.74	.67	.62	.71	.65	.60	.68	.63	.59	.57
4.0	.70	.61	.54	.68	.60	.53	.65	.58	.52	.63	.57	.51	.60	.55	.51	.48
5.0	.62	.53	.46	.61	.52	.46	.58	.51	.45	.56	.50	.45	.54	.49	.44	.42
6.0	.56	.47	.40	.55	.46	.40	.53	.45	.40	.51	.44	.39	.49	.43	.39	.36
7.0	.51	.42	.36	.50	.41	.35	.48	.40	.35	.46	.40	.35	.45	.39	.34	.32
8.0	.46	.38	.32	.45	.37	.32	.44	.37	.31	.43	.36	.31	.41	.35	.31	.29
9.0	.42	.34	.29	.42	.34	.28	.40	.33	.28	.39	.33	.28	.38	.32	.28	.26
10.0	.39	.31	.26	.39	.31	.26	.37	.30	.26	.36	.30	.25	.35	.29	.25	.23



C Range: 0 - 360DEG
 C Interval: 30.0DEG
 Test Speed: HIGH
 Temperature:25.3DEG
 Operators:LPC
 Test Date:2021-12-23

γ Range: 0 - 120DEG
 γ Interval: 1.0DEG
 Test System:EVERFINE GO-2000B_V1 SYSTEM V2.0.362
 Humidity:65.0%
 Test Distance:9.200m [K=1.0000]
 Remarks:

WEC AND CCEC

Test:U:24.00V I:0.3301A P:7.922W PF:1.000 Freq:50.00Hz Lamp Flux:160.708x1 lm		
NAME: SF15-24V-2835-120-2200+5700-80-5700	TYPE: 硅胶	WEIGHT:
SPEC.:	DIM.: 21mm*11.5mm	SERIAL No.:2021122309
MFR.: OLYMPIA	SUR.:1*0.0115	Shielding Angle:

pcc	80%			70%			50%			30%			10%			0	
pw	50%	30%	10%	50%	30%	10%	50%	30%	10%	50%	30%	10%	50%	30%	10%	0	
pfc	20%			20%			20%			20%			20%			0	
RCR	RCR:Room Cavity Ratio						Wall Exitance Coefficients(WEC)										
0.0																	
1.0	.320	.182	.058	.312	.178	.057	.298	.171	.055	.285	.164	.053	.273	.158	.051		
2.0	.296	.162	.050	.290	.160	.049	.277	.154	.048	.265	.149	.047	.255	.144	.045		
3.0	.273	.145	.043	.267	.143	.043	.255	.138	.042	.245	.134	.041	.235	.130	.040		
4.0	.251	.130	.038	.245	.128	.038	.235	.125	.037	.226	.121	.037	.217	.118	.036		
5.0	.231	.118	.034	.227	.116	.034	.218	.113	.033	.209	.110	.033	.202	.108	.032		
6.0	.214	.107	.031	.210	.106	.031	.202	.104	.030	.195	.101	.030	.188	.099	.029		
7.0	.199	.098	.028	.195	.097	.028	.188	.095	.027	.181	.093	.027	.175	.091	.027		
8.0	.186	.091	.026	.182	.090	.025	.176	.088	.025	.170	.086	.025	.164	.084	.025		
9.0	.174	.084	.024	.171	.083	.023	.165	.082	.023	.160	.080	.023	.155	.079	.023		
10.0	.164	.078	.022	.161	.078	.022	.156	.076	.021	.151	.075	.021	.146	.073	.021		

pcc	80%			70%			50%			30%			10%			0	
pw	50%	30%	10%	50%	30%	10%	50%	30%	10%	50%	30%	10%	50%	30%	10%	0	
pfc	20%			20%			20%			20%			20%			0	
RCR	RCR:Room Cavity Ratio						Ceiling Cavity Exitance Coefficients(CCEC)										
0.0	.204	.204	.204	.174	.174	.174	.119	.119	.119	.068	.068	.068	.022	.022	.022		
1.0	.195	.170	.147	.167	.146	.127	.114	.100	.088	.066	.058	.051	.021	.019	.016		
2.0	.187	.146	.111	.160	.125	.096	.110	.087	.067	.063	.050	.039	.020	.016	.013		
3.0	.179	.128	.088	.153	.111	.076	.105	.077	.053	.061	.045	.031	.020	.015	.010		
4.0	.171	.115	.072	.147	.099	.063	.101	.069	.044	.058	.041	.026	.019	.013	.009		
5.0	.164	.105	.061	.141	.091	.053	.097	.063	.037	.056	.037	.022	.018	.012	.007		
6.0	.156	.096	.053	.134	.083	.046	.093	.058	.033	.054	.034	.019	.017	.011	.006		
7.0	.150	.089	.047	.129	.078	.041	.089	.054	.029	.052	.032	.017	.017	.010	.006		
8.0	.143	.084	.043	.123	.073	.037	.085	.051	.026	.050	.030	.016	.016	.010	.005		
9.0	.137	.079	.039	.118	.068	.034	.082	.048	.024	.048	.028	.015	.015	.009	.005		
10.0	.131	.074	.037	.113	.065	.032	.079	.045	.023	.046	.027	.014	.015	.009	.004		

C Range: 0 - 360DEG
C Interval: 30.0DEG
Test Speed: HIGH
Temperature:25.3DEG
Operators:LPC
Test Date:2021-12-23

γ Range: 0 - 120DEG
γ Interval: 1.0DEG
Test System:EVERFINE GO-2000B_V1 SYSTEM V2.0.362
Humidity:65.0%
Test Distance:9.200m [K=1.0000]
Remarks:

UGR(Unified Glare Rating) Table

Test:U:24.00V I:0.3301A P:7.922W PF:1.000 Freq:50.00Hz Lamp Flux:160.708x1 lm											
NAME: SF15-24V-2835-120-2200+5700-80-5700						TYPE:硅胶			WEIGHT:		
SPEC.:						DIM.: 21mm*11.5mm			SERIAL No.:2021122309		
MFR.: OLYMPIA						SUR.:1*0.0115			Shielding Angle:		
ceiling/cavity	0.7	0.7	0.5	0.5	0.3	0.7	0.7	0.5	0.5	0.3	
walls	0.5	0.3	0.5	0.3	0.3	0.5	0.3	0.5	0.3	0.3	
working plane	0.2	0.2	0.2	0.2	0.2	0.2	0.2	0.2	0.2	0.2	
Room dimensions		Viewed crosswise					Viewed endwise				
x = 2H y = 2H	24.7	26.2	25.0	26.5	26.7	24.6	26.1	24.9	26.3	26.6	
	3H	26.3	27.6	26.6	27.9	28.2	26.0	27.4	26.4	27.7	28.0
	4H	26.9	28.2	27.2	28.5	28.8	26.6	27.9	26.9	28.2	28.5
	6H	27.3	28.5	27.6	28.8	29.2	26.9	28.1	27.3	28.4	28.8
	8H	27.4	28.6	27.8	28.9	29.3	27.0	28.2	27.3	28.5	28.8
	12H	27.5	28.7	27.9	29.0	29.4	27.0	28.1	27.3	28.5	28.8
4H	2H	25.6	26.9	25.9	27.2	27.5	25.5	26.8	25.8	27.1	27.4
	3H	27.4	28.5	27.8	28.9	29.2	27.3	28.4	27.6	28.7	29.1
	4H	28.2	29.2	28.6	29.6	29.9	28.0	29.1	28.4	29.4	29.8
	6H	28.8	29.7	29.2	30.1	30.5	28.5	29.5	29.0	29.9	30.3
	8H	29.0	29.8	29.4	30.2	30.7	28.7	29.6	29.1	30.0	30.4
	12H	29.1	29.9	29.6	30.4	30.8	28.8	29.6	29.2	30.0	30.4
8H	4H	28.7	29.5	29.1	29.9	30.4	28.6	29.4	29.0	29.8	30.3
	6H	29.5	30.3	30.0	30.7	31.2	29.4	30.2	29.9	30.6	31.1
	8H	29.9	30.6	30.4	31.0	31.5	29.8	30.4	30.3	30.9	31.4
	12H	30.2	30.8	30.7	31.3	31.8	30.0	30.6	30.5	31.0	31.6
12H	4H	28.7	29.6	29.2	30.0	30.4	28.6	29.4	29.1	29.9	30.3
	6H	29.7	30.4	30.2	30.8	31.3	29.6	30.3	30.1	30.7	31.2
	8H	30.2	30.7	30.7	31.2	31.7	30.1	30.6	30.6	31.1	31.6
Variations with the observer position at spacings:											
S = 1.0H	+ 0.1 / - 0.2					+ 0.1 / - 0.2					
1.5H	+ 0.3 / - 0.4					+ 0.3 / - 0.4					
2.0H	+ 0.2 / - 0.5					+ 0.3 / - 0.6					

CIE Pub.117, 160.7 lm Total Lamp Luminous Flux Correct (8log(F/F0) = -6.4)

C Range: 0 - 360DEG
C Interval: 30.0DEG
Test Speed: HIGH
Temperature:25.3DEG
Operators:LPC
Test Date:2021-12-23

γ Range: 0 - 120DEG
γ Interval: 1.0DEG
Test System:EVERFINE GO-2000B_V1 SYSTEM V2.0.362
Humidity:65.0%
Test Distance:9.200m [K=1.0000]
Remarks:

UTILIZATION FACTORS TABLE

Test:U:24.00V I:0.3301A P:7.922W PF:1.000 Freq:50.00Hz Lamp Flux:160.708x1 lm		
NAME: SF15-24V-2835-120-2200+5700-80-5700	TYPE: 硅胶	WEIGHT:
SPEC.:	DIM.: 21mm*11.5mm	SERIAL No.:2021122309
MFR.: OLYMPIA	SUR.:1*0.0115	Shielding Angle:

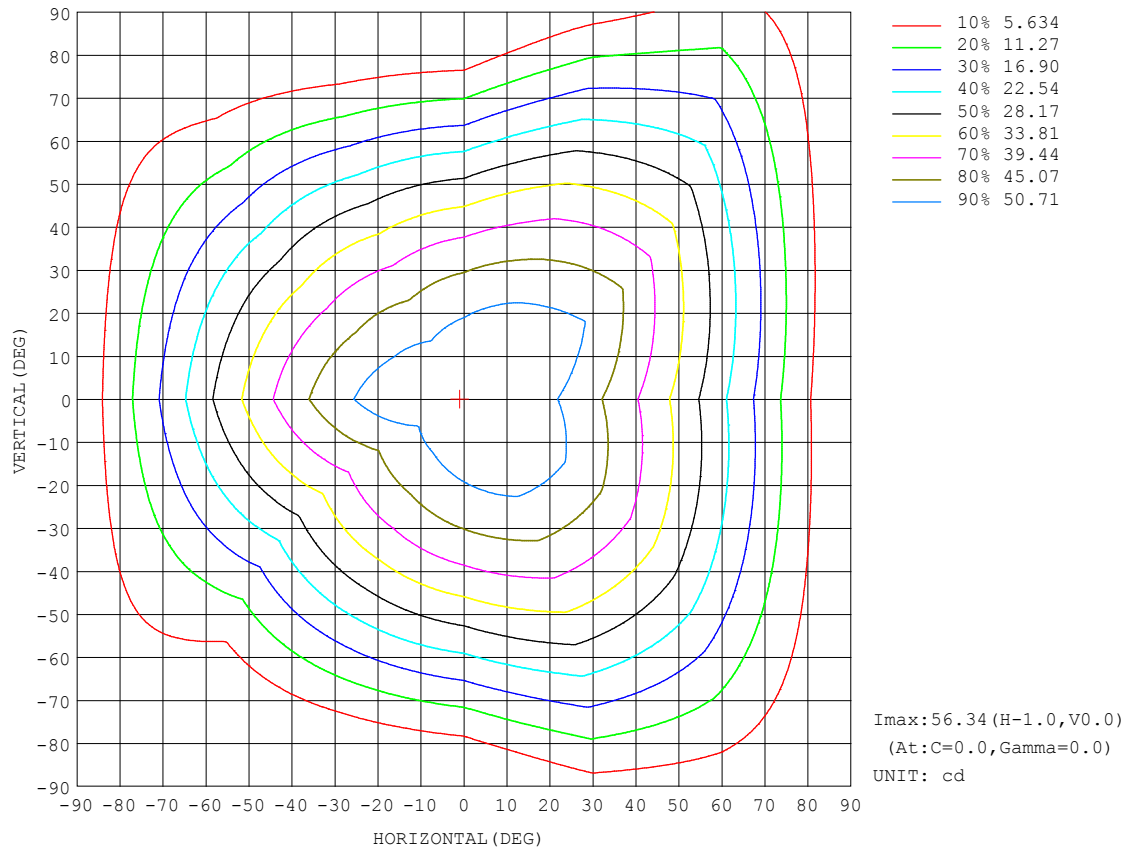
REFLECTANCE										
Ceiling	0.8	0.8	0.8	0.7	0.7	0.7	0.5	0.5	0.5	0
Walls	0.7	0.5	0.3	0.7	0.5	0.3	0.7	0.5	0.3	0
Working plane	0.2	0.2	0.2	0.2	0.2	0.2	0.2	0.2	0.2	0
ROOM INDEX	UTILIZATION FACTORS (PERCENT) k(RI) × RCR = 5									
k = 0.60	57	45	38	56	45	38	55	44	38	31
0.80	67	55	47	66	54	47	64	54	47	40
1.00	75	64	56	74	63	56	71	64	55	48
1.25	82	71	64	80	70	63	78	69	63	55
1.50	87	77	70	85	76	69	82	74	68	60
2.00	94	85	78	92	84	77	88	81	76	68
2.50	98	90	83	96	88	82	92	85	80	72
3.00	101	94	88	99	92	87	95	89	85	76
4.00	105	99	94	103	97	93	98	94	90	81
5.00	108	103	98	105	100	97	100	97	93	84
ROOM INDEX	UF (total)									Direct
According to DIN EN 13032-2 2004										
Suspended										
SHRNM = 1.25										

C Range: 0 - 360DEG
C Interval: 30.0DEG
Test Speed: HIGH
Temperature:25.3DEG
Operators:LPC
Test Date:2021-12-23

γ Range: 0 - 120DEG
 γ Interval: 1.0DEG
Test System:EVERFINE GO-2000B_V1 SYSTEM V2.0.362
Humidity:65.0%
Test Distance:9.200m [K=1.0000]
Remarks:

ISOCANDELA DIAGRAM

Test:U:24.00V I:0.3301A P:7.922W PF:1.000 Freq:50.00Hz Lamp Flux:160.708x1 lm		
NAME: SF15-24V-2835-120-2200+5700-80-5700	TYPE: 硅胶	WEIGHT:
SPEC.:	DIM.: 21mm*11.5mm	SERIAL No.:2021122309
MFR.: OLYMPIA	SUR.:1*0.0115	Shielding Angle:

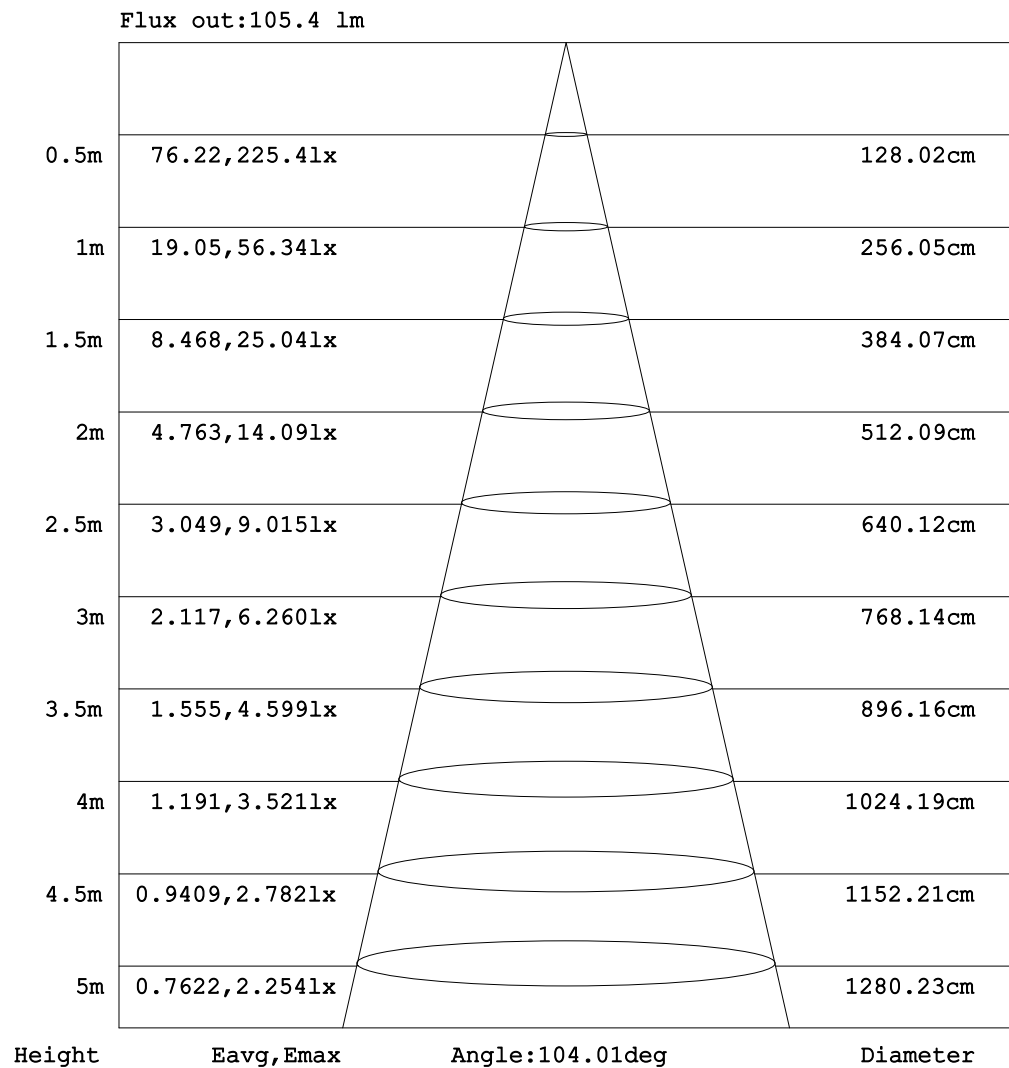


C Range: 0 - 360DEG
C Interval: 30.0DEG
Test Speed: HIGH
Temperature:25.3DEG
Operators:LPC
Test Date:2021-12-23

γ Range: 0 - 120DEG
 γ Interval: 1.0DEG
Test System:EVERFINE GO-2000B_V1 SYSTEM V2.0.362
Humidity:65.0%
Test Distance:9.200m [K=1.0000]
Remarks:

AAI Figure

Test:U:24.00V I:0.3301A P:7.922W PF:1.000 Freq:50.00Hz Lamp Flux:160.708x1 lm		
NAME: SF15-24V-2835-120-2200+5700-80-5700	TYPE: 硅胶	WEIGHT:
SPEC.:	DIM.: 21mm*11.5mm	SERIAL No.:2021122309
MFR.: OLYMPIA	SUR.:1*0.0115	Shielding Angle:



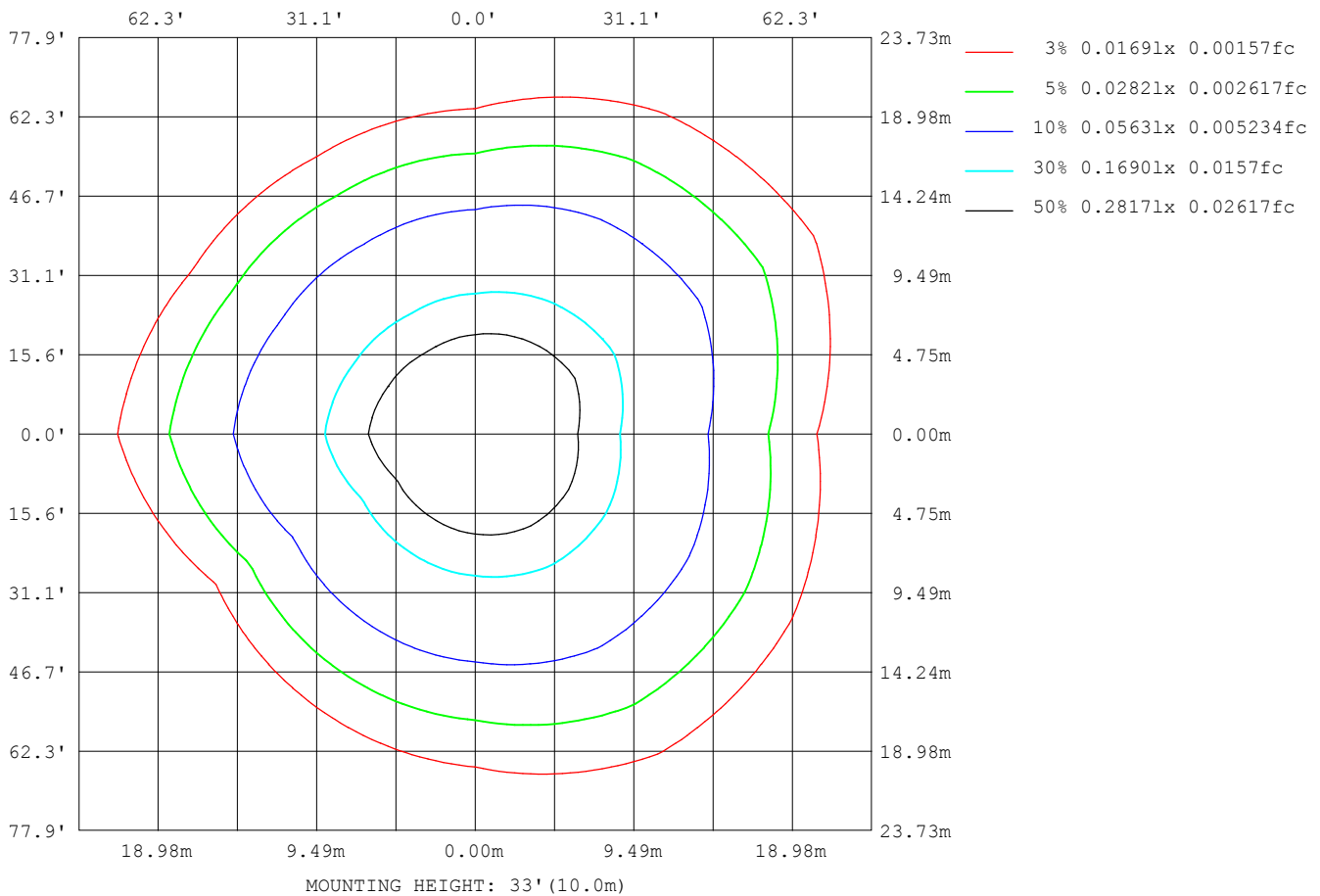
Note: The Curves indicate the illuminated area and the average illumination when the luminaire is at different distance.

C Range: 0 - 360DEG
 C Interval: 30.0DEG
 Test Speed: HIGH
 Temperature: 25.3DEG
 Operators: LPC
 Test Date: 2021-12-23

γ Range: 0 - 120DEG
 γ Interval: 1.0DEG
 Test System: EVERFINE GO-2000B_V1 SYSTEM V2.0.362
 Humidity: 65.0%
 Test Distance: 9.200m [K=1.0000]
 Remarks:

ISOLUX DIAGRAM

Test:U:24.00V I:0.3301A P:7.922W PF:1.000 Freq:50.00Hz Lamp Flux:160.708x1 lm		
NAME: SF15-24V-2835-120-2200+5700-80-5700	TYPE: 硅胶	WEIGHT:
SPEC.:	DIM.: 21mm*11.5mm	SERIAL No.:2021122309
MFR.: OLYMPIA	SUR.:1*0.0115	Shielding Angle:



C Range: 0 - 360DEG
 C Interval: 30.0DEG
 Test Speed: HIGH
 Temperature: 25.3DEG
 Operators: LPC
 Test Date: 2021-12-23

γ Range: 0 - 120DEG
 γ Interval: 1.0DEG
 Test System: EVERFINE GO-2000B_V1 SYSTEM V2.0.362
 Humidity: 65.0%
 Test Distance: 9.200m [K=1.0000]
 Remarks:

LED Avg.L Report

Test:U:24.00V I:0.3301A P:7.922W PF:1.000 Freq:50.00Hz Lamp Flux:160.708x1 lm		
NAME: SF15-24V-2835-120-2200+5700-80-5700	TYPE:硅胶	WEIGHT:
SPEC.:	DIM.: 21mm*11.5mm	SERIAL No.:2021122309
MFR.: OLYMPIA	SUR.:1*0.0115	Shielding Angle:

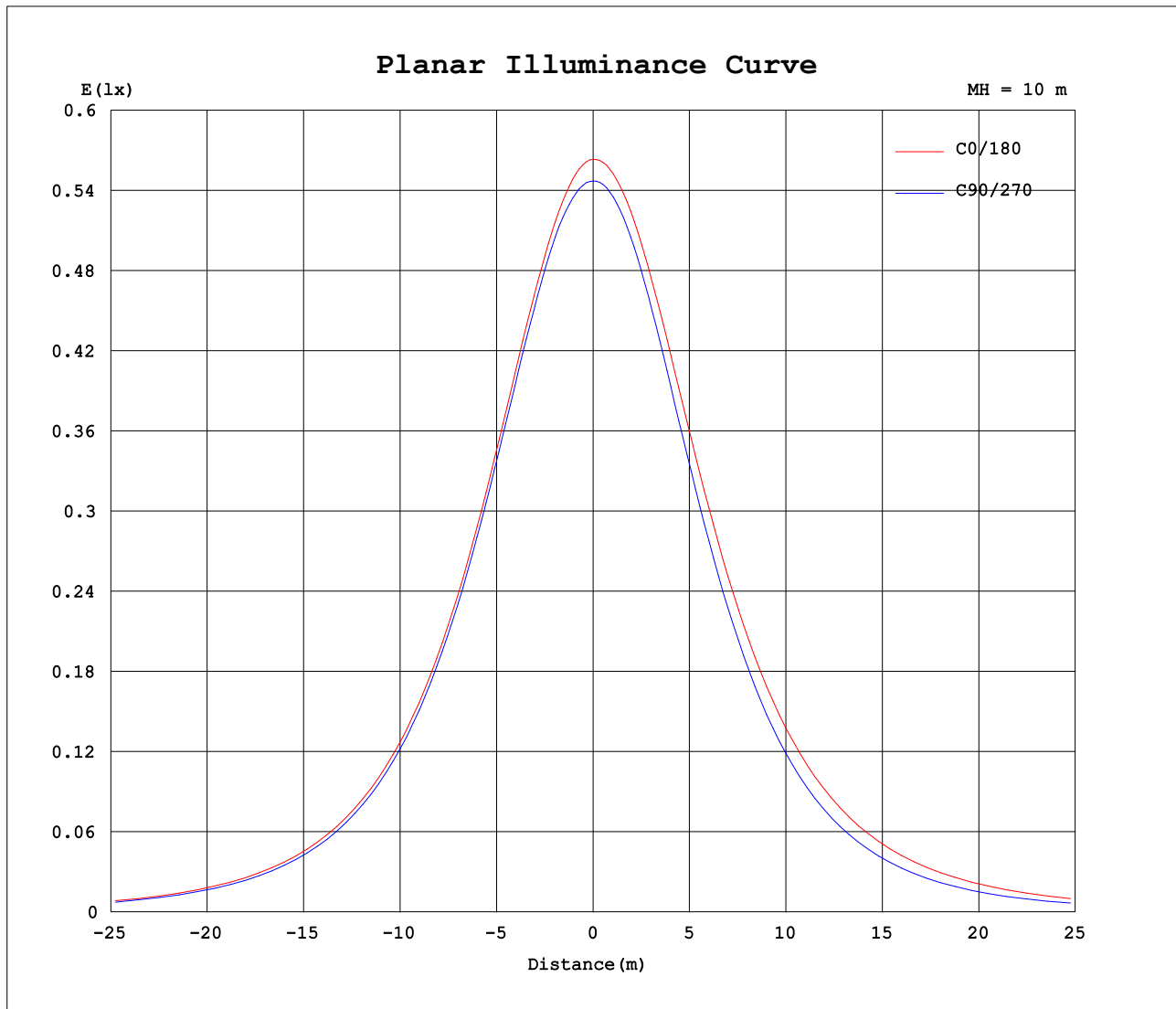
AvgL	cd/m2
L_0~180 (65) av	4250
L_0~180 (75) av	3902
L_0~180 (85) av	4088
L_90~270 (65) av	3385
L_90~270 (75) av	2545
L_90~270 (85) av	874
L_45 (65) av	4128
L_45 (75) av	3893
L_45 (85) av	5025

Standard: GB/T 29293-2012

C Range: 0 - 360DEG
C Interval: 30.0DEG
Test Speed: HIGH
Temperature:25.3DEG
Operators:LPC
Test Date:2021-12-23

γ Range: 0 - 120DEG
γ Interval: 1.0DEG
Test System:EVERFINE GO-2000B_V1 SYSTEM V2.0.362
Humidity:65.0%
Test Distance:9.200m [K=1.0000]
Remarks:

Planar Illuminance Curve



C Range: 0 - 360DEG
C Interval: 30.0DEG
Test Speed: HIGH
Temperature: 25.3DEG
Operators: LPC
Test Date: 2021-12-23

γ Range: 0 - 120DEG
 γ Interval: 1.0DEG
Test System: EVERFINE GO-2000B_V1 SYSTEM V2.0.362
Humidity: 65.0%
Test Distance: 9.200m [K=1.0000]
Remarks:

LUMINOUS DISTRIBUTION INTENSITY DATA

Test:U:24.00V I:0.3301A P:7.922W PF:1.000 Freq:50.00Hz Lamp Flux:160.708x1 lm		
NAME: SF15-24V-2835-120-2200+5700-80-5700	TYPE: 硅胶	WEIGHT:
SPEC.:	DIM.: 21mm*11.5mm	SERIAL No.:2021122309
MFR.: OLYMPIA	SUR.:1*0.0115	Shielding Angle:

Table--1

UNIT: cd

C (DEG) γ (DEG)	0	30	60	90	120	150	180	210	240	270	300	330						
0	56.3	56.1	54.9	54.7	54.7	54.8	56.3	56.1	54.9	54.7	54.7	54.8						
5	55.9	56.2	55.2	54.4	53.8	53.5	56.2	55.4	54.1	54.5	55.1	55.6						
10	54.9	55.9	55.1	53.7	52.4	51.7	55.7	54.1	52.8	53.7	54.9	55.9						
15	53.4	55.0	54.2	52.3	50.4	49.4	54.6	52.4	50.9	52.3	54.2	55.7						
20	51.5	53.7	52.9	50.4	48.0	46.8	53.0	50.2	48.5	50.3	52.8	54.8						
25	49.1	51.8	51.0	48.0	45.2	43.8	51.0	47.6	45.8	47.7	50.9	53.6						
30	46.4	49.5	48.7	45.2	42.1	40.4	48.5	44.6	42.7	44.7	48.5	51.9						
35	43.2	46.8	46.1	42.0	38.7	36.8	45.7	41.2	39.3	41.4	45.8	49.9						
40	39.8	43.7	43.1	38.4	35.0	32.9	42.5	37.6	35.7	37.6	43.1	47.3						
45	36.0	40.4	39.9	34.5	31.2	28.8	39.0	33.7	31.8	33.6	40.1	44.4						
50	32.0	36.6	36.4	30.4	27.1	24.4	35.1	29.6	27.8	29.3	36.9	41.2						
55	27.8	32.6	32.7	26.2	22.8	19.9	31.1	25.2	23.5	24.9	33.2	37.6						
60	23.5	28.5	28.8	21.8	18.4	15.4	26.8	20.7	19.1	20.3	29.3	33.7						
65	19.0	24.2	24.6	17.3	14.0	11.0	22.3	16.0	14.6	15.6	25.2	29.7						
70	14.5	19.7	20.3	12.8	9.64	6.81	17.7	11.4	10.1	11.1	20.9	25.4						
75	10.1	15.2	16.0	8.36	5.63	3.60	13.1	7.10	5.94	6.79	16.5	21.0						
80	6.08	10.7	11.6	4.37	2.52	1.62	8.75	3.70	2.56	3.02	12.0	16.5						
85	3.17	6.45	7.45	1.24	1.08	0.94	5.03	1.58	0.84	0.51	7.67	12.0						
90	1.55	3.18	3.78	0.59	0.94	0.93	2.35	0.75	0.68	0.27	3.82	7.70						
95	0.87	1.42	1.51	0.64	0.94	0.93	0.93	0.71	0.64	0.27	1.32	4.03						
100	0.82	0.89	0.92	0.69	0.93	0.92	0.65	0.69	0.61	0.30	0.61	1.69						
105	0.84	0.80	0.81	0.74	0.87	0.98	0.61	0.69	0.56	0.42	0.51	0.84						
110	0.85	0.83	0.80	0.74	0.85	0.99	0.57	0.69	0.66	0.45	0.61	0.68						
115	0.86	0.54	0.88	0.73	0.94	0.58	0.33	0.61	0.68	0.45	0.63	0.69						
120	0.89	0.15	0.87	0.24	0.97	0.16	0.10	0.17	0.69	0.47	0.52	0.68						
125	0.00	0.00	0.00	0.00	0.00	0.00	0.00	0.00	0.00	0.00	0.00	0.00						
130	0.00	0.00	0.00	0.00	0.00	0.00	0.00	0.00	0.00	0.00	0.00	0.00						
135	0.00	0.00	0.00	0.00	0.00	0.00	0.00	0.00	0.00	0.00	0.00	0.00						
140	0.00	0.00	0.00	0.00	0.00	0.00	0.00	0.00	0.00	0.00	0.00	0.00						
145	0.00	0.00	0.00	0.00	0.00	0.00	0.00	0.00	0.00	0.00	0.00	0.00						
150	0.00	0.00	0.00	0.00	0.00	0.00	0.00	0.00	0.00	0.00	0.00	0.00						
155	0.00	0.00	0.00	0.00	0.00	0.00	0.00	0.00	0.00	0.00	0.00	0.00						
160	0.00	0.00	0.00	0.00	0.00	0.00	0.00	0.00	0.00	0.00	0.00	0.00						
165	0.00	0.00	0.00	0.00	0.00	0.00	0.00	0.00	0.00	0.00	0.00	0.00						
170	0.00	0.00	0.00	0.00	0.00	0.00	0.00	0.00	0.00	0.00	0.00	0.00						
175	0.00	0.00	0.00	0.00	0.00	0.00	0.00	0.00	0.00	0.00	0.00	0.00						
180	0.00	0.00	0.00	0.00	0.00	0.00	0.00	0.00	0.00	0.00	0.00	0.00						

C Range: 0 - 360DEG
C Interval: 30.0DEG
Test Speed: HIGH
Temperature:25.3DEG
Operators:LPC
Test Date:2021-12-23

γ Range: 0 - 120DEG
γ Interval: 1.0DEG
Test System:EVERFINE GO-2000B_V1 SYSTEM V2.0.362
Humidity:65.0%
Test Distance:9.200m [K=1.0000]
Remarks:

Photometric Data Table [cd]

G/C	0.0	30.0	60.0	90.0	120.0	150.0	180.0	210.0	240.0	270.0
0.0	56.34	56.09	54.93	54.71	54.72	54.79	56.34	56.09	54.93	54.71
3.0	56.15	56.24	55.17	54.61	54.23	54.05	56.33	55.71	54.50	54.68
6.0	55.75	56.21	55.21	54.31	53.55	53.16	56.16	55.17	53.88	54.40
9.0	55.15	56.00	55.14	53.88	52.70	52.09	55.82	54.41	53.09	53.92
12.0	54.38	55.59	54.83	53.17	51.69	50.81	55.29	53.47	52.10	53.19
15.0	53.43	55.03	54.24	52.31	50.44	49.44	54.59	52.41	50.91	52.27
18.0	52.33	54.32	53.49	51.19	49.03	47.91	53.69	51.16	49.54	51.13
21.0	51.06	53.39	52.55	49.94	47.47	46.23	52.66	49.70	48.01	49.78
24.0	49.63	52.26	51.43	48.53	45.77	44.46	51.44	48.17	46.35	48.23
27.0	48.07	50.93	50.15	46.89	43.99	42.51	50.06	46.45	44.54	46.57
30.0	46.36	49.49	48.71	45.20	42.09	40.42	48.54	44.58	42.66	44.73
33.0	44.50	47.93	47.16	43.28	40.08	38.30	46.89	42.70	40.66	42.73
36.0	42.56	46.20	45.49	41.26	37.98	36.03	45.09	40.54	38.59	40.65
39.0	40.48	44.35	43.72	39.13	35.79	33.66	43.16	38.37	36.43	38.39
42.0	38.28	42.42	41.86	36.90	33.51	31.27	41.12	36.09	34.18	36.04
45.0	36.03	40.36	39.91	34.55	31.18	28.78	38.96	33.72	31.85	33.62
48.0	33.65	38.15	37.84	32.15	28.74	26.20	36.70	31.26	29.43	31.09
51.0	31.21	35.87	35.71	29.63	26.26	23.54	34.35	28.73	26.95	28.45
54.0	28.70	33.44	33.48	27.05	23.70	20.80	31.90	26.13	24.39	25.80
57.0	26.12	31.04	31.18	24.45	21.10	18.12	29.37	23.32	21.78	23.04
60.0	23.48	28.48	28.78	21.76	18.45	15.41	26.77	20.66	19.11	20.25
63.0	20.82	25.89	26.32	19.07	15.79	12.64	24.09	17.89	16.40	17.52
66.0	18.11	23.30	23.76	16.38	13.12	10.08	21.39	15.05	13.70	14.78
69.0	15.40	20.59	21.21	13.63	10.49	7.567	18.64	12.32	11.01	12.02
72.0	12.73	17.87	18.62	10.93	7.975	5.356	15.86	9.728	8.389	9.338
75.0	10.10	15.16	16.01	8.361	5.627	3.599	13.13	7.104	5.938	6.788
78.0	7.597	12.45	13.37	5.903	3.585	2.233	10.47	4.927	3.773	4.420
81.0	5.374	9.757	10.79	3.632	2.090	1.400	7.937	3.206	2.076	2.378
84.0	3.635	7.244	8.257	1.739	1.224	0.9945	5.692	1.869	1.043	0.8489
87.0	2.366	4.970	5.883	0.6778	0.9502	0.9317	3.825	1.088	0.7005	0.3123
90.0	1.545	3.182	3.776	0.5881	0.9444	0.9273	2.353	0.7494	0.6780	0.2681
93.0	1.042	1.962	2.155	0.6133	0.9432	0.9266	1.364	0.7187	0.6556	0.2700
96.0	0.8198	1.230	1.294	0.6434	0.9419	0.9259	0.7928	0.7046	0.6331	0.2714
99.0	0.8165	0.9123	0.9507	0.6736	0.9407	0.9251	0.6650	0.6926	0.6180	0.2864
102.0	0.8273	0.8474	0.8729	0.7241	0.9053	0.9500	0.6308	0.6886	0.6028	0.3767
105.0	0.8382	0.8042	0.8097	0.7364	0.8699	0.9750	0.6109	0.6885	0.5629	0.4230
108.0	0.8490	0.8243	0.8062	0.7427	0.8605	0.9834	0.6153	0.6905	0.6134	0.4473
111.0	0.8522	0.8443	0.8439	0.7370	0.8942	0.9045	0.5243	0.6936	0.6662	0.4495
114.0	0.8565	0.6141	0.8795	0.7313	0.9354	0.6578	0.3813	0.6966	0.6736	0.4528
117.0	0.8644	0.3838	0.8846	0.6063	0.9527	0.4111	0.2383	0.4354	0.6811	0.4561
120.0	0.8946	0.1535	0.8695	0.2425	0.9700	0.1645	0.0953	0.1741	0.6885	0.4674
G/C	300.0	330.0								
0.0	54.72	54.79								
3.0	55.03	55.35								
6.0	55.10	55.71								
9.0	55.01	55.89								
12.0	54.68	55.92								
15.0	54.16	55.73								
18.0	53.43	55.30								
21.0	52.50	54.59								
24.0	51.35	53.83								
27.0	50.03	52.91								
30.0	48.55	51.93								
33.0	46.96	50.75								
36.0	45.28	49.41								
39.0	43.62	47.90								
42.0	41.90	46.21								
45.0	40.10	44.43								
48.0	38.22	42.51								
51.0	36.17	40.46								
54.0	33.95	38.33								
57.0	31.66	36.10								
60.0	29.27	33.72								
63.0	26.82	31.35								
66.0	24.32	28.86								
69.0	21.73	26.31								
72.0	19.10	23.72								
75.0	16.46	21.03								
78.0	13.78	18.32								
81.0	11.12	15.63								
84.0	8.519	12.92								
87.0	6.064	10.23								
90.0	3.823	7.702								

C Range: 0 - 360DEG
 C Interval: 30.0DEG
 Test Speed: HIGH
 Temperature: 25.3DEG
 Operators: LPC
 Test Date: 2021-12-23

γ Range: 0 - 120DEG
 γ Interval: 1.0DEG
 Test System: EVERFINE GO-2000B_V1 SYSTEM V2.0.362
 Humidity: 65.0%
 Test Distance: 9.200m [K=1.0000]
 Remarks:

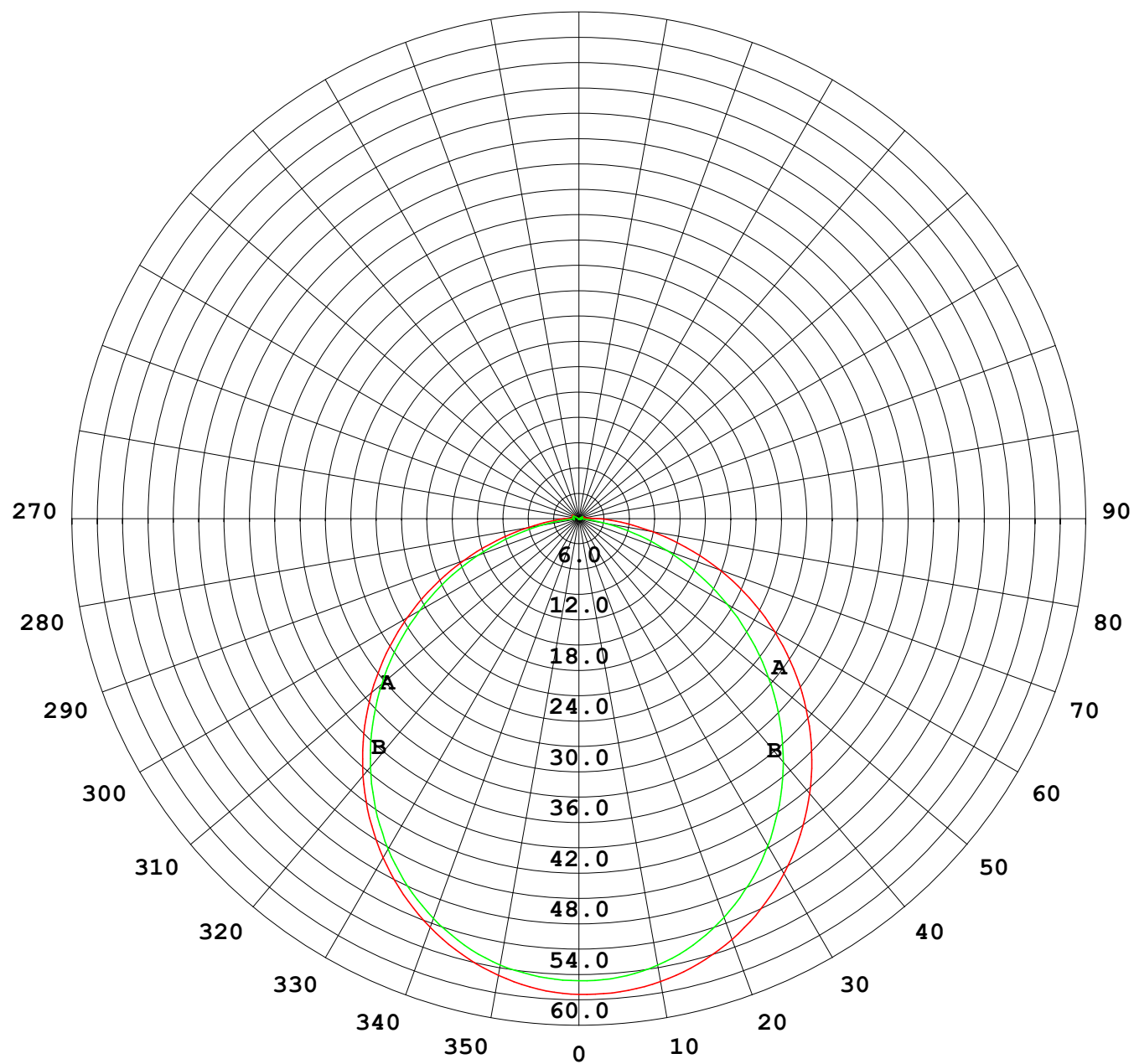
Photometric Data Table [cd]

93.0	2.061	5.354
96.0	1.068	3.474
99.0	0.6728	2.150
102.0	0.5827	1.243
105.0	0.5076	0.8402
108.0	0.5783	0.6737
111.0	0.6173	0.6796
114.0	0.6382	0.6856
117.0	0.6130	0.6915
120.0	0.5226	0.6785

C Range: 0 - 360DEG
C Interval: 30.0DEG
Test Speed: HIGH
Temperature: 25.3DEG
Operators: LPC
Test Date: 2021-12-23

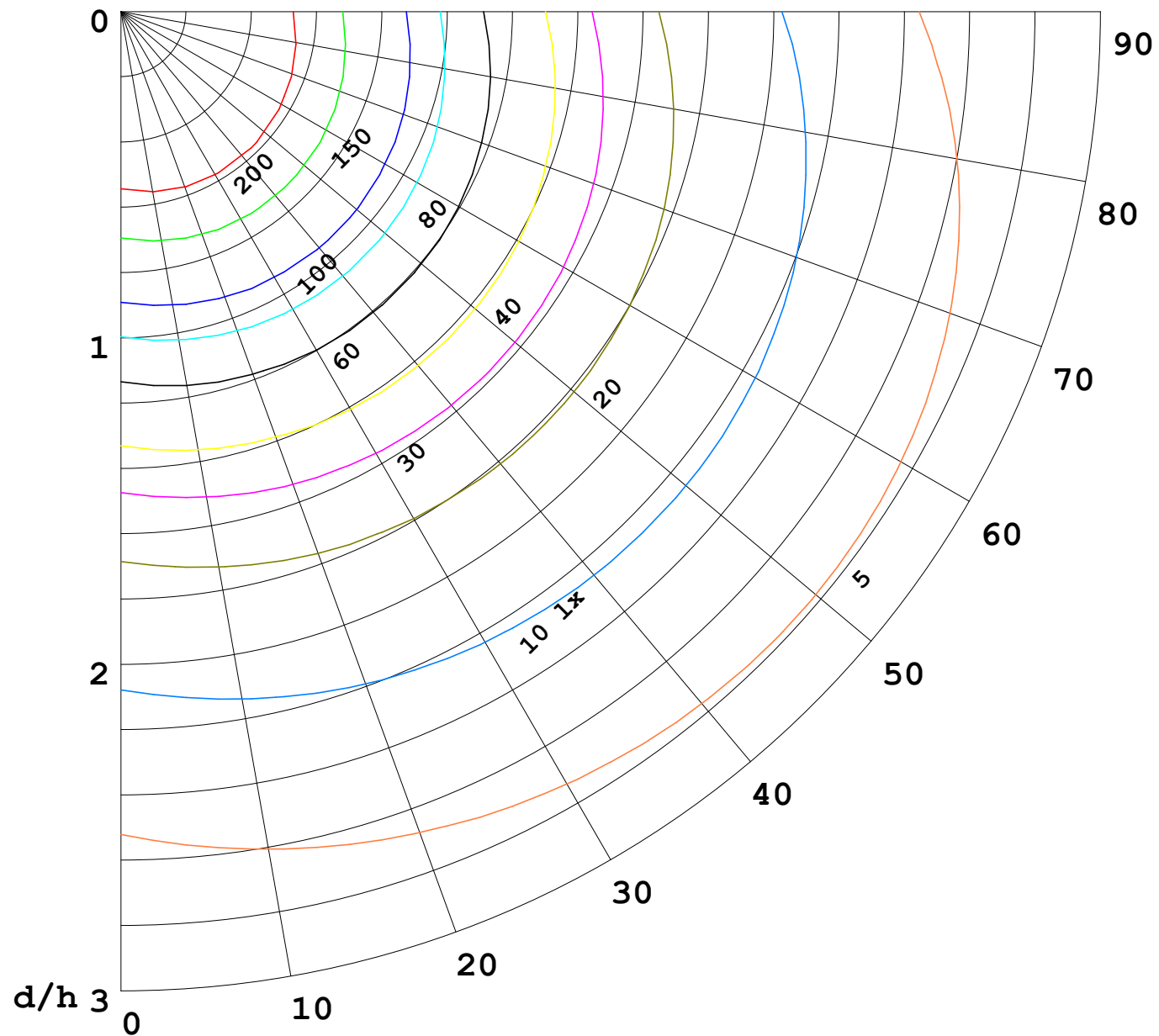
γ Range: 0 - 120DEG
γ Interval: 1.0DEG
Test System: EVERFINE GO-2000B_V1 SYSTEM V2.0.362
Humidity: 65.0%
Test Distance: 9.200m [K=1.0000]
Remarks:

I (cd)



1000 lm

$\kappa = 1$



F = 5000 lm
 K = 0.7
 Hcc = 0.0 m
 Hfc = 0.0 m
 Eave = 100 lx

	Pcc	Pw	Pfc
—	70	50	30
—	50	30	20

