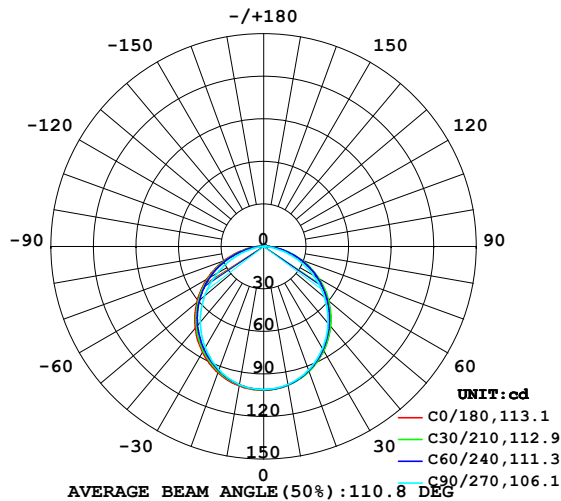


## LUMINAIRE PHOTOMETRIC TEST REPORT

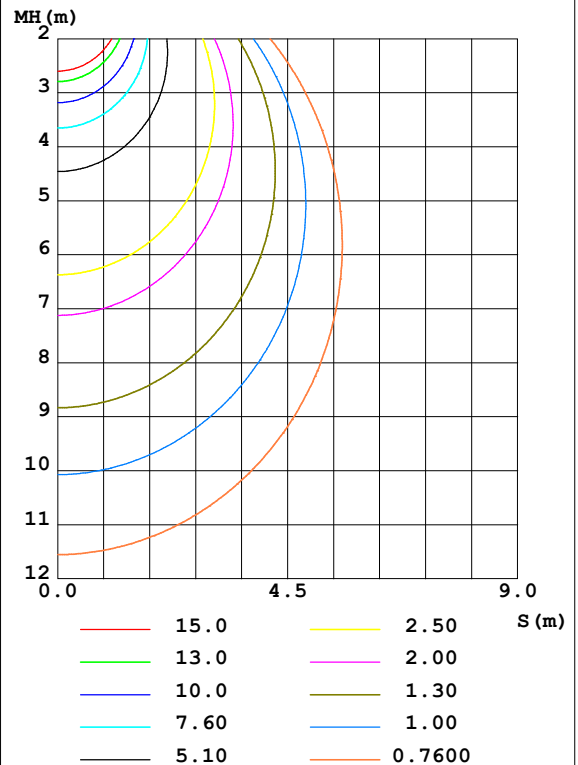
Test:U:24.00V I:0.6408A P:15.38W PF:1.000 Freq:50.00Hz Lamp Flux:290.329x1 lm		
NAME: SF15-24V-2835-120-3000+6000-80	TYPE: 硅胶	WEIGHT:
SPEC.:	DIM.: 21mm*11.5mm	SERIAL No.:2021122316
MFR.: OLYMPIA	SUR.:1*0.0115	Shielding Angle:

DATA OF LAMP		PHOTOMETRIC DATA Eff: 18.88 lm/W			
MODEL	2835	I <sub>max</sub> (cd)	101.4	S/MH (C0/180)	1.26
NOMINAL POWER (W)	15	LOR (%)	100.0	S/MH (C90/270)	1.22
RATED VOLTAGE (V)	24	TOTAL FLUX (lm)	290.33	η UP, DN (C0-180)	0.8, 49.0
NOMINAL FLUX (lm)	290.329	CIE CLASS	DIRECT	η UP, DN (C180-360)	0.6, 49.6
LAMPS INSIDE	1	η up (%)	1.4	CIBSE SHR NOM	1.25
TEST VOLTAGE (V)	24	η down (%)	98.6	CIBSE SHR MAX	1.35

LUMINOUS INTENSITY DISTRIBUTION DIAGRAM



C0 PLANE ISOLUX DIAGRAM (UNIT:lx)



C Range: 0 - 360DEG  
C Interval: 30.0DEG  
Test Speed: HIGH  
Temperature: 25.3DEG  
Operators: LPC  
Test Date: 2021-12-23

γ Range: 0 - 120DEG  
γ Interval: 1.0DEG  
Test System: EVERFINE GO-2000B\_V1 SYSTEM V2.0.362  
Humidity: 65.0%  
Test Distance: 9.200m [K=1.0000]  
Remarks:

## ZONAL FLUX DIAGRAM

ZONAL FLUX DIAGRAM:

$\gamma$	C0	C45	C90	C135	C180	C225	C270	C315	$\gamma$	$\Phi$ zone	$\Phi$ total	%lum, lamp
10	99.28	99.22	98.90	98.46	99.84	99.21	98.97	99.19	0- 10	9.549	9.549	3.29,3.29
20	93.52	93.51	92.74	92.61	94.73	93.42	92.42	93.47	10- 20	27.26	36.81	12.7,12.7
30	84.67	84.37	83.07	83.65	86.27	84.62	82.44	84.26	20- 30	41.05	77.87	26.8,26.8
40	73.15	72.63	70.63	72.14	75.11	73.32	69.55	72.88	30- 40	49.20	127.1	43.8,43.8
50	59.46	59.15	56.07	58.49	61.61	59.78	54.57	59.89	40- 50	50.83	177.9	61.3,61.3
60	44.25	44.35	40.10	43.22	46.37	44.46	37.95	45.41	50- 60	45.94	223.8	77.1,77.1
70	27.99	28.56	23.50	26.84	30.01	28.05	20.92	29.55	60- 70	35.18	259.0	89.2,89.2
80	12.50	13.01	8.219	11.26	13.99	12.02	5.901	13.71	70- 80	20.43	279.4	96.3,96.3
90	3.176	2.802	0.9601	2.400	3.487	2.175	0.5026	2.745	80- 90	6.679	286.1	98.6,98.6
100	1.376	1.548	1.126	1.684	1.231	1.216	0.6331	1.109	90-100	1.682	287.8	99.1,99.1
110	1.415	1.568	1.316	1.299	1.226	1.116	0.8568	1.181	100-110	1.353	289.2	99.6,99.6
120	1.513	1.174	1.427	0.3027	0.2463	0.1729	1.010	1.256	110-120	1.125	290.3	100,100
130	0	0	0	0	0	0	0	0	120-130	0.0463	290.3	100,100
140	0	0	0	0	0	0	0	0	130-140	0	290.3	100,100
150	0	0	0	0	0	0	0	0	140-150	0	290.3	100,100
160	0	0	0	0	0	0	0	0	150-160	0	290.3	100,100
170	0	0	0	0	0	0	0	0	160-170	0	290.3	100,100
180	0	0	0	0	0	0	0	0	170-180	0	290.3	100,100
DEG	LUMINOUS INTENSITY:cd									UNIT:lm		

Conical surface Flux(90deg): 152.69 lm

%lum = 52.6%

%lamp = 52.6%

Conical surface Flux(120deg): 223.83 lm

%lum = 77.1%

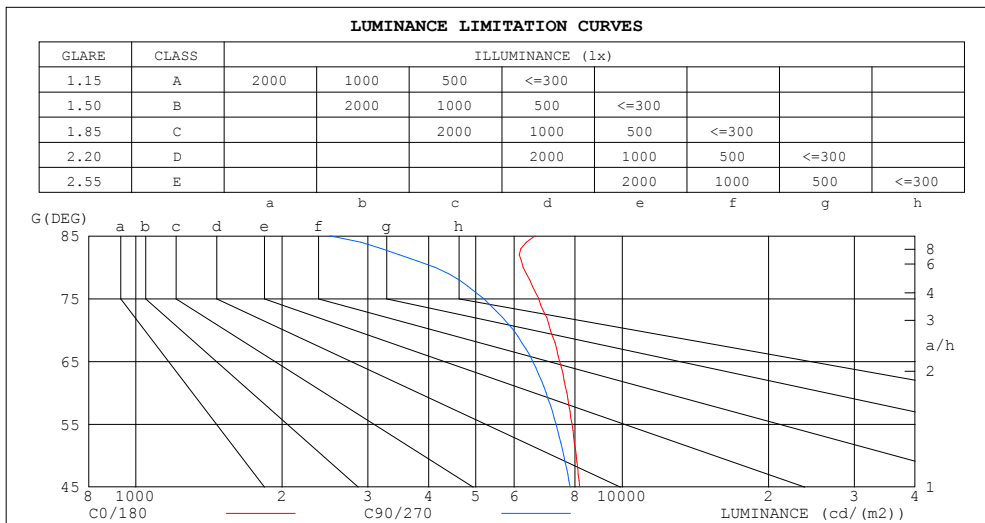
%lamp = 77.1%

C Range: 0 - 360DEG  
 C Interval: 30.0DEG  
 Test Speed: HIGH  
 Temperature:25.3DEG  
 Operators:LPC  
 Test Date:2021-12-23

$\gamma$  Range: 0 - 120DEG  
 $\gamma$  Interval: 1.0DEG  
 Test System:EVERFINE GO-2000B\_V1 SYSTEM V2.0.362  
 Humidity:65.0%  
 Test Distance:9.200m [K=1.0000]  
 Remarks:

## LUMINANCE LIMITATION CURVES

Test:U:24.00V I:0.6408A P:15.38W PF:1.000 Freq:50.00Hz Lamp Flux:290.329x1 lm		
NAME: SF15-24V-2835-120-3000+6000-80	TYPE: 硅胶	WEIGHT:
SPEC.:	DIM.: 21mm*11.5mm	SERIAL No.:2021122316
MFR.: OLYMPIA	SUR.:1*0.0115	Shielding Angle:



LUMINANCE cd/(m2)		
G (DEG)	C0/180	C90/270
85	6620	2508
80	6261	4116
75	6738	5191
70	7116	5975
65	7434	6552
60	7695	6975
55	7884	7309
50	8043	7585
45	8183	7818

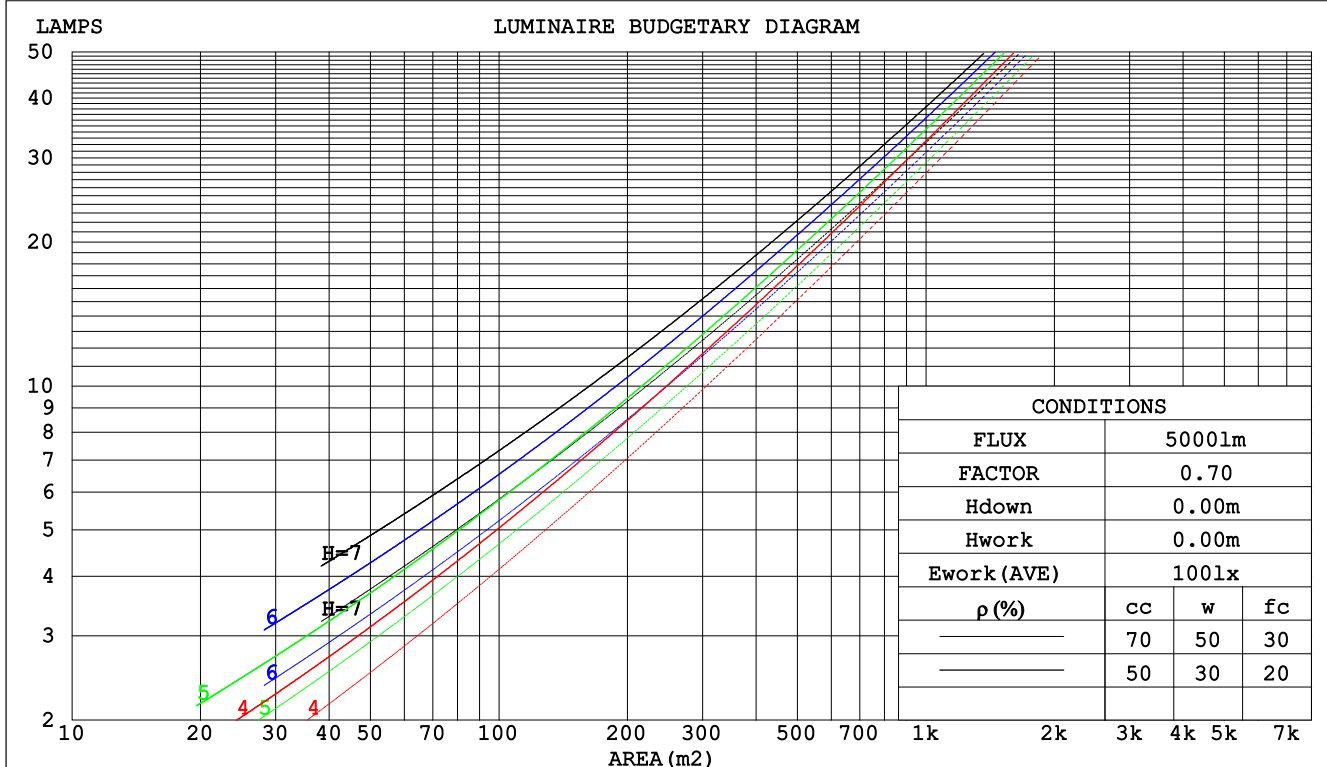
C Range: 0 - 360DEG  
C Interval: 30.0DEG  
Test Speed: HIGH  
Temperature:25.3DEG  
Operators:LPC  
Test Date:2021-12-23

$\gamma$  Range: 0 - 120DEG  
 $\gamma$  Interval: 1.0DEG  
Test System:EVERFINE GO-2000B\_V1 SYSTEM V2.0.362  
Humidity:65.0%  
Test Distance:9.200m [K=1.0000]  
Remarks:

## CU AND LUMINAIRE BUDGETARY ESTIMATE DIAGRAM

Test:U:24.00V I:0.6408A P:15.38W PF:1.000 Freq:50.00Hz Lamp Flux:290.329x1 lm		
NAME: SF15-24V-2835-120-3000+6000-80	TYPE: 硅胶	WEIGHT:
SPEC.:	DIM.: 21mm*11.5mm	SERIAL No.:2021122316
MFR.: OLYMPIA	SUR.:1*0.0115	Shielding Angle:

pcc	80%			70%			50%			30%			10%			0
pw	50%	30%	10%	50%	30%	10%	50%	30%	10%	50%	30%	10%	50%	30%	10%	0
pfc	20%			20%			20%			20%			20%			0
RCR	RCR:Room Cavity Ratio						Coefficients of Utilization(CU)									
0.0	1.19	1.19	1.19	1.16	1.16	1.16	1.10	1.10	1.10	1.05	1.05	1.05	1.01	1.01	1.01	.99
1.0	1.03	.99	.95	1.01	.97	.93	.96	.93	.90	.92	.90	.87	.88	.86	.84	.82
2.0	.90	.83	.77	.88	.82	.76	.84	.79	.74	.81	.76	.72	.77	.74	.70	.68
3.0	.79	.71	.64	.77	.70	.63	.74	.67	.62	.71	.65	.61	.68	.64	.60	.57
4.0	.70	.61	.54	.68	.60	.54	.66	.59	.53	.63	.57	.52	.61	.56	.51	.49
5.0	.62	.53	.47	.61	.53	.46	.59	.51	.46	.57	.50	.45	.55	.49	.44	.42
6.0	.56	.47	.41	.55	.47	.40	.53	.46	.40	.51	.45	.39	.50	.44	.39	.37
7.0	.51	.42	.36	.50	.42	.36	.48	.41	.35	.47	.40	.35	.45	.39	.35	.33
8.0	.46	.38	.32	.46	.38	.32	.44	.37	.32	.43	.36	.31	.42	.36	.31	.29
9.0	.43	.34	.29	.42	.34	.29	.41	.33	.28	.39	.33	.28	.38	.32	.28	.26
10.0	.39	.31	.26	.39	.31	.26	.38	.31	.26	.37	.30	.26	.36	.30	.25	.24



C Range: 0 - 360DEG  
 C Interval: 30.0DEG  
 Test Speed: HIGH  
 Temperature:25.3DEG  
 Operators:LPC  
 Test Date:2021-12-23

γ Range: 0 - 120DEG  
 γ Interval: 1.0DEG  
 Test System:EVERFINE GO-2000B\_V1 SYSTEM V2.0.362  
 Humidity:65.0%  
 Test Distance:9.200m [K=1.0000]  
 Remarks:

### WEC AND CCEC

Test:U:24.00V I:0.6408A P:15.38W PF:1.000 Freq:50.00Hz Lamp Flux:290.329x1 lm		
NAME: SF15-24V-2835-120-3000+6000-80	TYPE: 硅胶	WEIGHT:
SPEC.:	DIM.: 21mm*11.5mm	SERIAL No.:2021122316
MFR.: OLYMPIA	SUR.:1*0.0115	Shielding Angle:

pcc	80%			70%			50%			30%			10%			0	
pw	50%	30%	10%	50%	30%	10%	50%	30%	10%	50%	30%	10%	50%	30%	10%	0	
pfc	20%			20%			20%			20%			20%			0	
RCR	RCR:Room Cavity Ratio						Wall Exitance Coefficients(WEC)										
0.0																	
1.0	.314	.179	.057	.306	.175	.056	.292	.168	.054	.279	.161	.052	.267	.155	.050		
2.0	.294	.161	.049	.287	.158	.049	.274	.153	.047	.263	.147	.046	.252	.143	.045		
3.0	.271	.144	.043	.265	.142	.043	.254	.138	.042	.244	.134	.041	.234	.130	.040		
4.0	.250	.130	.038	.244	.128	.038	.235	.124	.037	.225	.121	.037	.217	.118	.036		
5.0	.230	.117	.034	.226	.116	.034	.217	.113	.033	.209	.110	.033	.201	.108	.032		
6.0	.214	.107	.031	.209	.106	.030	.202	.103	.030	.194	.101	.030	.187	.099	.029		
7.0	.199	.098	.028	.195	.097	.028	.188	.095	.027	.181	.093	.027	.175	.091	.027		
8.0	.186	.091	.025	.182	.090	.025	.176	.088	.025	.170	.086	.025	.164	.084	.025		
9.0	.174	.084	.023	.171	.083	.023	.165	.082	.023	.160	.080	.023	.155	.079	.023		
10.0	.163	.078	.022	.161	.078	.022	.156	.076	.021	.151	.075	.021	.146	.073	.021		

pcc	80%			70%			50%			30%			10%			0
pw	50%	30%	10%	50%	30%	10%	50%	30%	10%	50%	30%	10%	50%	30%	10%	0
pfc	20%			20%			20%			20%			20%			0
RCR	RCR:Room Cavity Ratio						Ceiling Cavity Exitance Coefficients(CCEC)									
0.0	.202	.202	.202	.172	.172	.172	.118	.118	.118	.068	.068	.068	.022	.022	.022	
1.0	.192	.167	.145	.164	.144	.125	.112	.099	.086	.065	.057	.050	.021	.018	.016	
2.0	.184	.143	.109	.157	.123	.094	.108	.085	.066	.062	.050	.039	.020	.016	.013	
3.0	.176	.126	.085	.151	.108	.074	.104	.075	.052	.060	.044	.031	.019	.014	.010	
4.0	.168	.112	.070	.144	.097	.060	.099	.068	.043	.057	.040	.025	.018	.013	.008	
5.0	.161	.102	.058	.138	.088	.051	.095	.062	.036	.055	.036	.021	.018	.012	.007	
6.0	.154	.094	.051	.132	.081	.044	.091	.057	.031	.053	.033	.019	.017	.011	.006	
7.0	.147	.087	.045	.126	.075	.039	.087	.053	.028	.051	.031	.016	.016	.010	.005	
8.0	.140	.081	.040	.121	.070	.035	.084	.049	.025	.049	.029	.015	.016	.010	.005	
9.0	.134	.076	.037	.116	.066	.032	.080	.046	.023	.047	.027	.014	.015	.009	.004	
10.0	.129	.072	.034	.111	.062	.030	.077	.044	.021	.045	.026	.013	.015	.009	.004	

C Range: 0 - 360DEG  
C Interval: 30.0DEG  
Test Speed: HIGH  
Temperature:25.3DEG  
Operators:LPC  
Test Date:2021-12-23

γ Range: 0 - 120DEG  
γ Interval: 1.0DEG  
Test System:EVERFINE GO-2000B\_V1 SYSTEM V2.0.362  
Humidity:65.0%  
Test Distance:9.200m [K=1.0000]  
Remarks:

UGR(Unified Glare Rating) Table

Test:U:24.00V I:0.6408A P:15.38W PF:1.000 Freq:50.00Hz Lamp Flux:290.329x1 lm											
NAME: SF15-24V-2835-120-3000+6000-80						TYPE:硅胶			WEIGHT:		
SPEC.:						DIM.: 21mm*11.5mm			SERIAL No.:2021122316		
MFR.: OLYMPIA						SUR.:1*0.0115			Shielding Angle:		
ceiling/cavity	0.7	0.7	0.5	0.5	0.3	0.7	0.7	0.5	0.5	0.3	
walls	0.5	0.3	0.5	0.3	0.3	0.5	0.3	0.5	0.3	0.3	
working plane	0.2	0.2	0.2	0.2	0.2	0.2	0.2	0.2	0.2	0.2	
Room dimensions		Viewed crosswise					Viewed endwise				
x = 2H y = 2H	24.3	25.8	24.6	26.1	26.3	24.0	25.5	24.3	25.7	26.0	
	3H	25.9	27.3	26.2	27.6	27.8	25.4	26.8	25.7	27.1	27.3
	4H	26.5	27.9	26.9	28.1	28.4	25.9	27.2	26.3	27.5	27.8
	6H	27.0	28.3	27.4	28.6	28.9	26.2	27.5	26.6	27.8	28.1
	8H	27.2	28.4	27.6	28.7	29.0	26.3	27.5	26.6	27.8	28.1
	12H	27.3	28.5	27.7	28.8	29.1	26.3	27.5	26.7	27.8	28.1
4H	2H	25.0	26.3	25.3	26.6	26.8	24.7	26.0	25.0	26.3	26.6
	3H	26.7	27.9	27.1	28.2	28.5	26.3	27.5	26.7	27.8	28.2
	4H	27.5	28.6	27.9	28.9	29.3	27.0	28.1	27.4	28.4	28.8
	6H	28.1	29.1	28.5	29.4	29.8	27.4	28.4	27.9	28.8	29.2
	8H	28.4	29.2	28.8	29.6	30.0	27.6	28.4	28.0	28.8	29.2
	12H	28.5	29.4	29.0	29.8	30.2	27.6	28.4	28.1	28.8	29.3
8H	4H	27.8	28.7	28.2	29.1	29.5	27.4	28.2	27.8	28.6	29.0
	6H	28.6	29.3	29.1	29.7	30.2	28.0	28.7	28.5	29.2	29.6
	8H	28.9	29.6	29.4	30.0	30.5	28.2	28.9	28.7	29.3	29.8
	12H	29.2	29.8	29.7	30.3	30.8	28.3	28.9	28.8	29.4	29.9
12H	4H	27.8	28.6	28.3	29.0	29.5	27.4	28.2	27.8	28.6	29.0
	6H	28.7	29.3	29.1	29.8	30.2	28.1	28.7	28.6	29.2	29.7
	8H	29.0	29.6	29.5	30.1	30.6	28.4	28.9	28.9	29.4	29.9
Variations with the observer position at spacings:											
S = 1.0H	+ 0.1 / - 0.2					+ 0.2 / - 0.2					
1.5H	+ 0.2 / - 0.3					+ 0.2 / - 0.4					
2.0H	+ 0.1 / - 0.3					+ 0.2 / - 0.4					

CIE Pub.117, 290.3 lm Total Lamp Luminous Flux Correct (8log(F/F0) = -4.3)

C Range: 0 - 360DEG  
 C Interval: 30.0DEG  
 Test Speed: HIGH  
 Temperature:25.3DEG  
 Operators:LPC  
 Test Date:2021-12-23

γ Range: 0 - 120DEG  
 γ Interval: 1.0DEG  
 Test System:EVERFINE GO-2000B\_V1 SYSTEM V2.0.362  
 Humidity:65.0%  
 Test Distance:9.200m [K=1.0000]  
 Remarks:

## UTILIZATION FACTORS TABLE

Test:U:24.00V I:0.6408A P:15.38W PF:1.000 Freq:50.00Hz Lamp Flux:290.329x1 lm		
NAME: SF15-24V-2835-120-3000+6000-80	TYPE: 硅胶	WEIGHT:
SPEC.:	DIM.: 21mm*11.5mm	SERIAL No.:2021122316
MFR.: OLYMPIA	SUR.:1*0.0115	Shielding Angle:

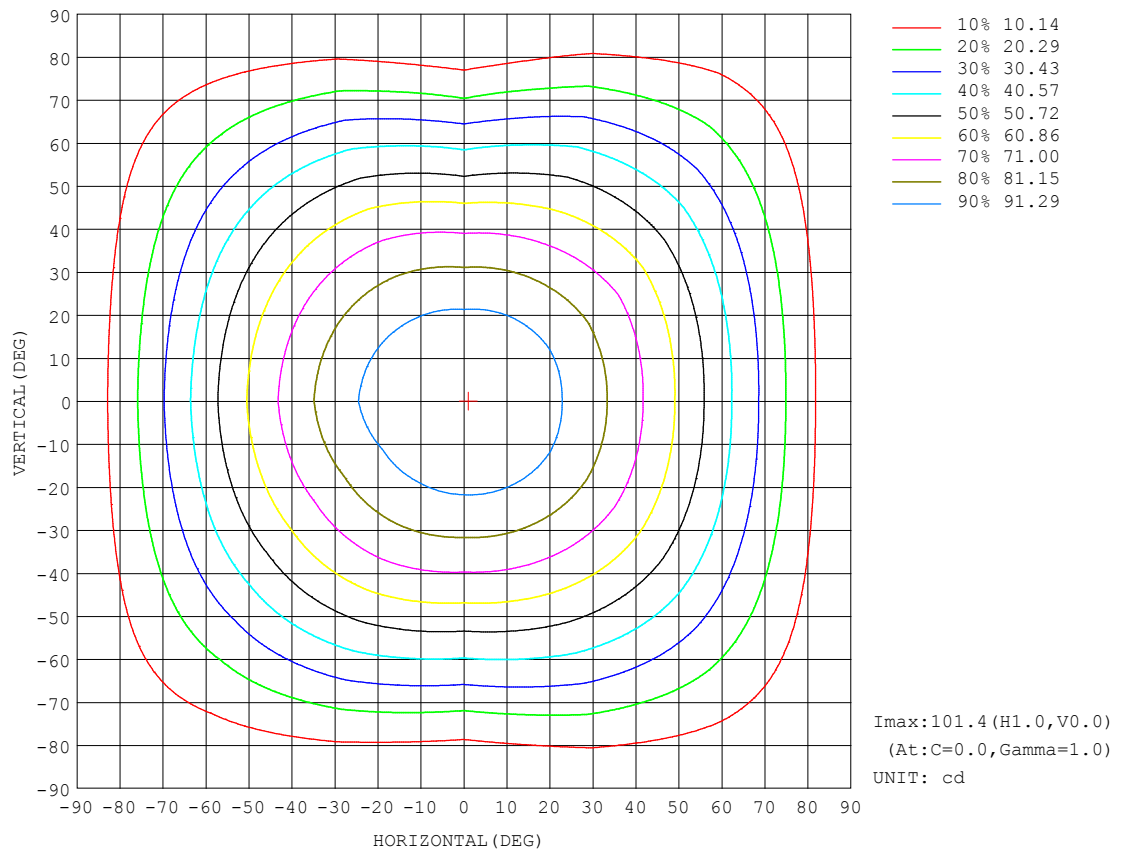
REFLECTANCE										
Ceiling	0.8	0.8	0.8	0.7	0.7	0.7	0.5	0.5	0.5	0
Walls	0.7	0.5	0.3	0.7	0.5	0.3	0.7	0.5	0.3	0
Working plane	0.2	0.2	0.2	0.2	0.2	0.2	0.2	0.2	0.2	0
ROOM INDEX	UTILIZATION FACTORS (PERCENT) $k(RI) \times RCR = 5$									
$k = 0.60$	57	45	38	56	45	38	55	45	38	32
0.80	67	55	48	66	55	48	64	54	47	40
1.00	75	64	57	74	63	56	72	65	56	49
1.25	82	72	64	81	71	64	78	69	63	56
1.50	87	77	70	86	76	70	82	74	69	61
2.00	94	85	79	92	84	78	89	82	76	68
2.50	98	90	84	96	89	83	92	86	81	72
3.00	102	94	89	99	93	88	95	90	85	77
4.00	106	100	95	103	98	93	99	94	91	81
5.00	108	103	99	105	101	97	101	97	94	84
ROOM INDEX	UF (total)									Direct
According to DIN EN 13032-2 2004			Suspended					SHRNOM = 1.25		

C Range: 0 - 360DEG  
 C Interval: 30.0DEG  
 Test Speed: HIGH  
 Temperature: 25.3DEG  
 Operators: LPC  
 Test Date: 2021-12-23

$\gamma$  Range: 0 - 120DEG  
 $\gamma$  Interval: 1.0DEG  
 Test System: EVERFINE GO-2000B\_V1 SYSTEM V2.0.362  
 Humidity: 65.0%  
 Test Distance: 9.200m [K=1.0000]  
 Remarks:

## ISOCANDELA DIAGRAM

Test:U:24.00V I:0.6408A P:15.38W PF:1.000 Freq:50.00Hz Lamp Flux:290.329x1 lm		
NAME: SF15-24V-2835-120-3000+6000-80	TYPE: 硅胶	WEIGHT:
SPEC.:	DIM.: 21mm*11.5mm	SERIAL No.:2021122316
MFR.: OLYMPIA	SUR.:1*0.0115	Shielding Angle:



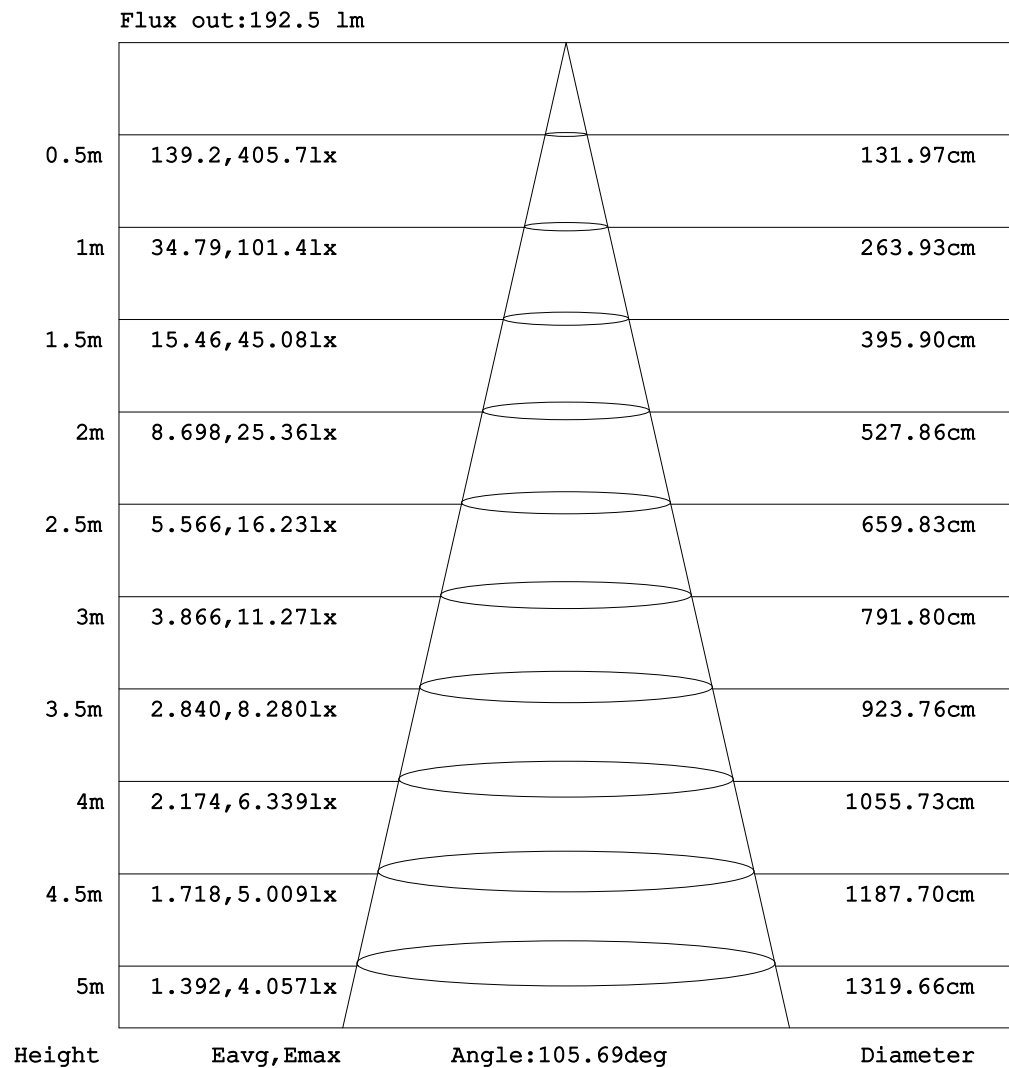
C Range: 0 - 360DEG  
C Interval: 30.0DEG  
Test Speed: HIGH  
Temperature:25.3DEG  
Operators:LPC  
Test Date:2021-12-23

$\gamma$  Range: 0 - 120DEG  
 $\gamma$  Interval: 1.0DEG  
Test System:EVERFINE GO-2000B\_V1 SYSTEM V2.0.362  
Humidity:65.0%  
Test Distance:9.200m [K=1.0000]  
Remarks:



## AAI Figure

Test:U:24.00V I:0.6408A P:15.38W PF:1.000 Freq:50.00Hz Lamp Flux:290.329x1 lm		
NAME: SF15-24V-2835-120-3000+6000-80	TYPE: 硅胶	WEIGHT:
SPEC.:	DIM.: 21mm*11.5mm	SERIAL No.:2021122316
MFR.: OLYMPIA	SUR.:1*0.0115	Shielding Angle:



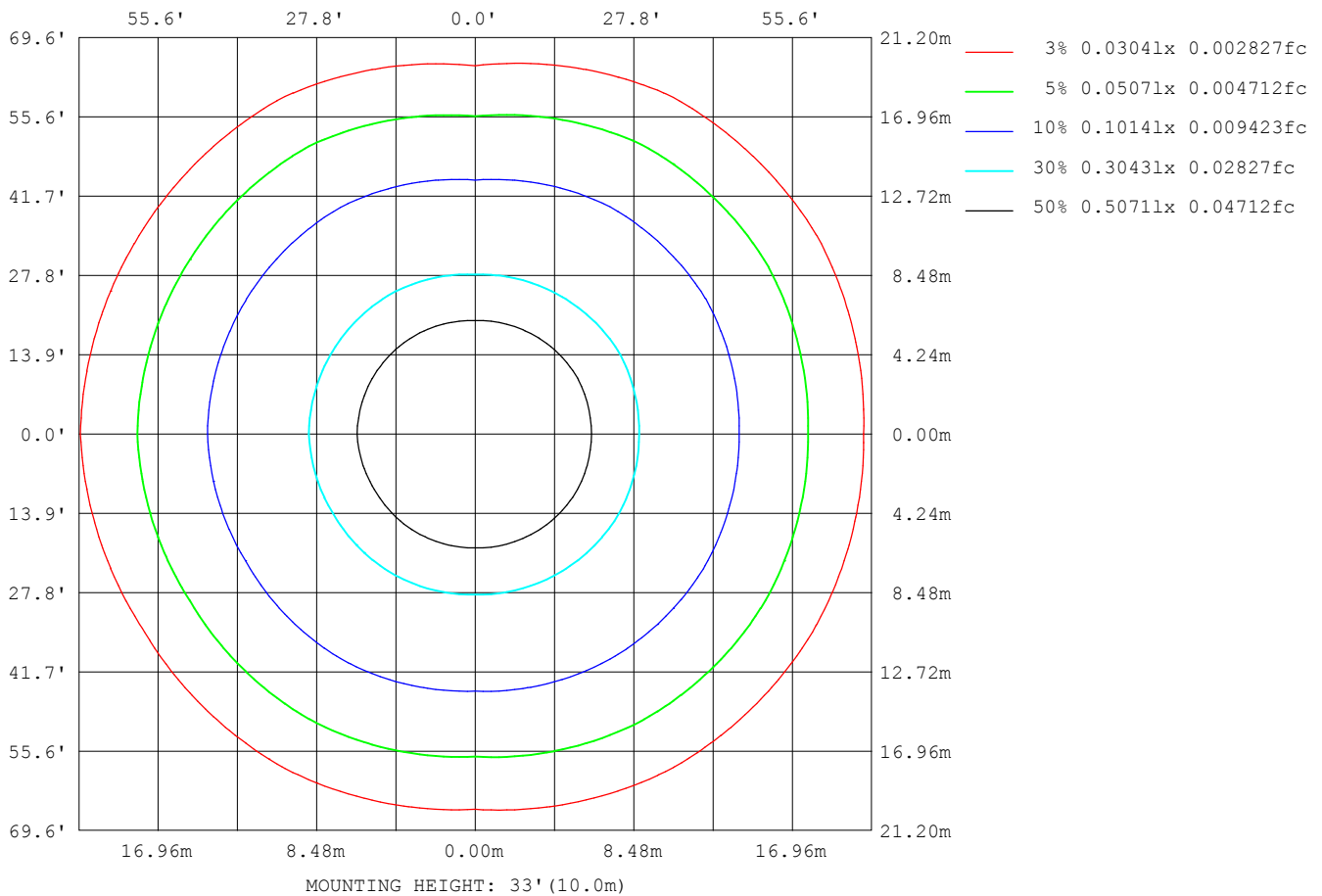
Note: The Curves indicate the illuminated area and the average illumination when the luminaire is at different distance.

C Range: 0 - 360DEG  
 C Interval: 30.0DEG  
 Test Speed: HIGH  
 Temperature: 25.3DEG  
 Operators: LPC  
 Test Date: 2021-12-23

γ Range: 0 - 120DEG  
 γ Interval: 1.0DEG  
 Test System: EVERFINE GO-2000B\_V1 SYSTEM V2.0.362  
 Humidity: 65.0%  
 Test Distance: 9.200m [K=1.0000]  
 Remarks:

## ISOLUX DIAGRAM

Test:U:24.00V I:0.6408A P:15.38W PF:1.000 Freq:50.00Hz Lamp Flux:290.329x1 lm		
NAME: SF15-24V-2835-120-3000+6000-80	TYPE: 硅胶	WEIGHT:
SPEC.:	DIM.: 21mm*11.5mm	SERIAL No.:2021122316
MFR.: OLYMPIA	SUR.:1*0.0115	Shielding Angle:



C Range: 0 - 360DEG  
C Interval: 30.0DEG  
Test Speed: HIGH  
Temperature:25.3DEG  
Operators:LPC  
Test Date:2021-12-23

$\gamma$  Range: 0 - 120DEG  
 $\gamma$  Interval: 1.0DEG  
Test System:EVERFINE GO-2000B\_V1 SYSTEM V2.0.362  
Humidity:65.0%  
Test Distance:9.200m [K=1.0000]  
Remarks:

## LED Avg.L Report

Test:U:24.00V I:0.6408A P:15.38W PF:1.000 Freq:50.00Hz Lamp Flux:290.329x1 lm		
NAME: SF15-24V-2835-120-3000+6000-80	TYPE:硅胶	WEIGHT:
SPEC.:	DIM.: 21mm*11.5mm	SERIAL No.:2021122316
MFR.: OLYMPIA	SUR.:1*0.0115	Shielding Angle:

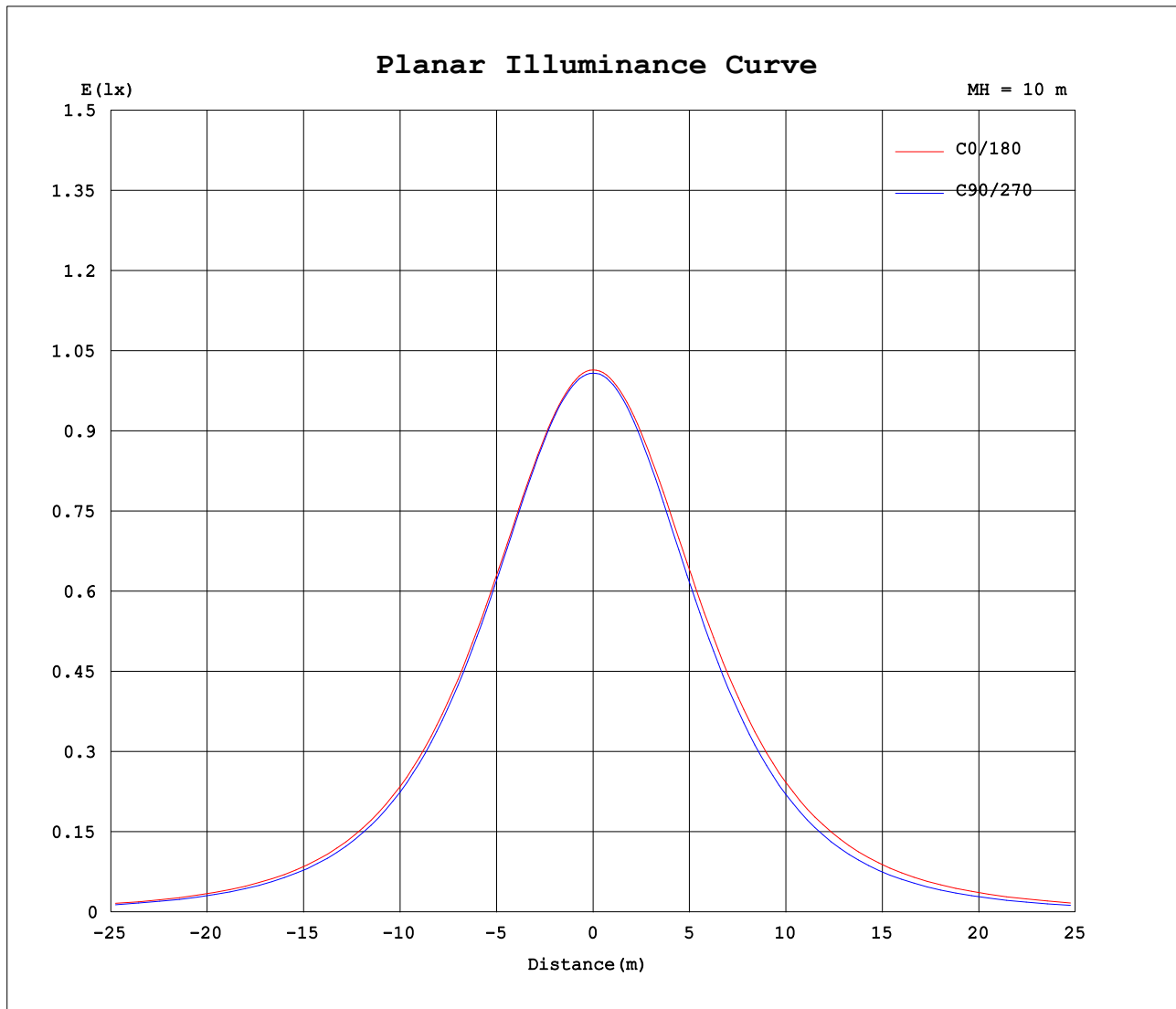
AvgL	cd/m2
L_0~180 (65) av	7652
L_0~180 (75) av	7015
L_0~180 (85) av	7155
L_90~270 (65) av	6299
L_90~270 (75) av	4758
L_90~270 (85) av	1782
L_45 (65) av	7549
L_45 (75) av	6880
L_45 (85) av	6400

Standard: GB/T 29293-2012

C Range: 0 - 360DEG  
C Interval: 30.0DEG  
Test Speed: HIGH  
Temperature:25.3DEG  
Operators:LPC  
Test Date:2021-12-23

γ Range: 0 - 120DEG  
γ Interval: 1.0DEG  
Test System:EVERFINE GO-2000B\_V1 SYSTEM V2.0.362  
Humidity:65.0%  
Test Distance:9.200m [K=1.0000]  
Remarks:

## Planar Illuminance Curve



C Range: 0 - 360DEG  
C Interval: 30.0DEG  
Test Speed: HIGH  
Temperature: 25.3DEG  
Operators: LPC  
Test Date: 2021-12-23

$\gamma$  Range: 0 - 120DEG  
 $\gamma$  Interval: 1.0DEG  
Test System: EVERFINE GO-2000B\_V1 SYSTEM V2.0.362  
Humidity: 65.0%  
Test Distance: 9.200m [K=1.0000]  
Remarks:

## LUMINOUS DISTRIBUTION INTENSITY DATA

Test:U:24.00V I:0.6408A P:15.38W PF:1.000 Freq:50.00Hz Lamp Flux:290.329x1 lm		
NAME: SF15-24V-2835-120-3000+6000-80	TYPE: 硅胶	WEIGHT:
SPEC.:	DIM.: 21mm*11.5mm	SERIAL No.:2021122316
MFR.: OLYMPIA	SUR.:1*0.0115	Shielding Angle:

Table--1

UNIT: cd

C (DEG) γ (DEG)	0	30	60	90	120	150	180	210	240	270	300	330						
0	101	101	101	101	101	101	101	101	101	101	101	101						
5	101	101	101	100	100	100.0	101	101	100	100	100	100						
10	99.3	99.3	99.2	98.9	98.5	98.4	99.8	99.4	99.1	99.0	99.2	99.2						
15	96.8	97.0	96.7	96.3	95.9	95.9	97.7	97.0	96.5	96.2	96.7	97.0						
20	93.5	93.8	93.2	92.7	92.5	92.7	94.7	93.8	93.0	92.4	93.2	93.8						
25	89.4	89.7	88.9	88.3	88.3	88.7	90.9	89.9	88.8	87.9	88.9	89.6						
30	84.7	84.8	83.9	83.1	83.5	83.8	86.3	85.3	84.0	82.4	83.7	84.8						
35	79.2	79.4	78.2	77.2	78.0	78.4	81.0	79.9	78.6	76.3	77.9	79.8						
40	73.2	73.4	71.8	70.6	71.9	72.3	75.1	74.0	72.7	69.6	71.6	74.1						
45	66.5	66.9	65.2	63.6	65.4	65.7	68.6	67.5	66.1	62.3	65.1	67.9						
50	59.5	60.0	58.4	56.1	58.3	58.7	61.6	60.4	59.2	54.6	58.7	61.1						
55	52.0	52.6	51.2	48.2	50.9	51.2	54.2	52.9	51.8	46.4	52.0	53.8						
60	44.2	45.0	43.7	40.1	43.1	43.3	46.4	44.9	44.0	38.0	44.6	46.2						
65	36.1	37.1	36.0	31.8	34.9	35.2	38.3	36.8	35.9	29.4	36.8	38.3						
70	28.0	29.0	28.2	23.5	26.7	27.0	30.0	28.5	27.6	20.9	28.9	30.2						
75	20.1	21.0	20.3	15.5	18.5	18.9	21.7	20.3	19.3	12.9	20.9	22.1						
80	12.5	13.3	12.7	8.22	11.0	11.6	14.0	12.6	11.4	5.90	13.1	14.3						
85	6.64	6.95	6.22	2.51	4.99	6.01	7.71	6.52	5.06	1.06	6.26	7.58						
90	3.18	3.19	2.41	0.96	2.08	2.72	3.49	2.70	1.65	0.50	2.12	3.37						
95	1.63	1.64	1.60	1.04	1.75	1.77	1.49	1.37	1.18	0.55	1.16	1.54						
100	1.38	1.50	1.60	1.13	1.68	1.69	1.23	1.27	1.17	0.63	1.16	1.06						
105	1.39	1.54	1.56	1.30	1.59	1.46	1.23	1.26	1.05	0.84	1.06	1.12						
110	1.42	1.58	1.55	1.32	1.57	1.03	1.23	1.06	1.17	0.86	1.19	1.18						
115	1.46	1.63	1.73	1.36	1.52	0.60	0.86	0.58	0.87	0.89	1.27	1.23						
120	1.51	0.66	1.69	1.43	0.43	0.17	0.25	0.10	0.25	1.01	1.18	1.33						
125	0.00	0.00	0.00	0.00	0.00	0.00	0.00	0.00	0.00	0.00	0.00	0.00						
130	0.00	0.00	0.00	0.00	0.00	0.00	0.00	0.00	0.00	0.00	0.00	0.00						
135	0.00	0.00	0.00	0.00	0.00	0.00	0.00	0.00	0.00	0.00	0.00	0.00						
140	0.00	0.00	0.00	0.00	0.00	0.00	0.00	0.00	0.00	0.00	0.00	0.00						
145	0.00	0.00	0.00	0.00	0.00	0.00	0.00	0.00	0.00	0.00	0.00	0.00						
150	0.00	0.00	0.00	0.00	0.00	0.00	0.00	0.00	0.00	0.00	0.00	0.00						
155	0.00	0.00	0.00	0.00	0.00	0.00	0.00	0.00	0.00	0.00	0.00	0.00						
160	0.00	0.00	0.00	0.00	0.00	0.00	0.00	0.00	0.00	0.00	0.00	0.00						
165	0.00	0.00	0.00	0.00	0.00	0.00	0.00	0.00	0.00	0.00	0.00	0.00						
170	0.00	0.00	0.00	0.00	0.00	0.00	0.00	0.00	0.00	0.00	0.00	0.00						
175	0.00	0.00	0.00	0.00	0.00	0.00	0.00	0.00	0.00	0.00	0.00	0.00						
180	0.00	0.00	0.00	0.00	0.00	0.00	0.00	0.00	0.00	0.00	0.00	0.00						

C Range: 0 - 360DEG  
C Interval: 30.0DEG  
Test Speed: HIGH  
Temperature:25.3DEG  
Operators:LPC  
Test Date:2021-12-23

γ Range: 0 - 120DEG  
γ Interval: 1.0DEG  
Test System:EVERFINE GO-2000B\_V1 SYSTEM V2.0.362  
Humidity:65.0%  
Test Distance:9.200m [K=1.0000]  
Remarks:

## Photometric Data Table [cd]

G/C	0.0	30.0	60.0	90.0	120.0	150.0	180.0	210.0	240.0	270.0
0.0	101.4	101.1	101.0	100.8	100.7	100.6	101.4	101.1	101.0	100.8
3.0	101.2	101.0	100.9	100.7	100.5	100.3	101.3	101.0	100.8	100.7
6.0	100.6	100.5	100.3	100.1	99.87	99.74	100.9	100.5	100.3	100.3
9.0	99.65	99.62	99.49	99.25	98.92	98.78	100.2	99.66	99.42	99.36
12.0	98.39	98.47	98.27	97.98	97.61	97.53	99.11	98.50	98.15	97.97
15.0	96.81	96.98	96.66	96.29	95.94	95.95	97.73	97.03	96.49	96.24
18.0	94.93	95.19	94.70	94.24	93.97	94.10	96.00	95.30	94.48	94.17
21.0	92.77	93.04	92.43	91.93	91.70	92.01	94.02	93.05	92.23	91.54
24.0	90.30	90.56	89.83	89.25	89.18	89.52	91.73	90.81	89.72	88.90
27.0	87.63	87.83	86.99	86.26	86.44	86.81	89.13	88.02	86.97	85.78
30.0	84.67	84.83	83.91	83.07	83.46	83.84	86.27	85.27	83.98	82.44
33.0	81.49	81.61	80.52	79.57	80.26	80.61	83.19	82.18	80.82	78.93
36.0	78.07	78.20	76.94	75.87	76.83	77.18	79.86	78.78	77.44	75.05
39.0	74.41	74.65	73.15	71.99	73.21	73.59	76.32	75.17	73.86	70.98
42.0	70.55	70.87	69.21	67.88	69.36	69.75	72.57	71.38	70.09	66.81
45.0	66.54	66.90	65.24	63.58	65.38	65.74	68.60	67.46	66.14	62.26
48.0	62.35	62.83	61.16	59.17	61.20	61.61	64.47	63.29	62.02	57.60
51.0	58.01	58.51	56.96	54.53	56.88	57.22	60.17	58.91	57.73	52.85
54.0	53.53	54.11	52.63	49.80	52.42	52.71	55.70	54.46	53.27	47.99
57.0	48.94	49.60	48.20	45.06	47.83	48.12	51.10	49.79	48.69	42.83
60.0	44.25	44.96	43.73	40.10	43.11	43.33	46.37	44.94	43.97	37.95
63.0	39.46	40.22	39.17	35.14	38.28	38.46	41.53	40.14	39.14	32.84
66.0	34.51	35.44	34.49	30.19	33.28	33.61	36.65	35.25	34.23	27.66
69.0	29.64	30.58	29.77	25.15	28.39	28.63	31.64	30.18	29.24	22.63
72.0	24.86	25.71	25.02	20.18	23.50	23.69	26.61	25.21	24.23	17.82
75.0	20.05	20.97	20.31	15.45	18.47	18.93	21.71	20.26	19.28	12.87
78.0	15.44	16.24	15.65	11.06	14.03	14.33	16.99	15.48	14.50	8.503
81.0	11.17	11.83	11.31	6.833	9.612	10.23	12.58	11.23	10.01	4.844
84.0	7.636	7.960	7.362	3.493	6.014	6.951	8.808	7.561	6.109	1.834
87.0	4.959	5.140	4.182	1.275	3.440	4.382	5.777	4.647	3.295	0.6298
90.0	3.176	3.192	2.412	0.9601	2.079	2.721	3.487	2.699	1.651	0.5026
93.0	2.078	2.078	1.710	1.005	1.759	1.909	2.027	1.630	1.191	0.5366
96.0	1.504	1.613	1.598	1.051	1.744	1.764	1.331	1.337	1.176	0.5578
99.0	1.374	1.527	1.598	1.106	1.692	1.734	1.231	1.302	1.168	0.6181
102.0	1.380	1.508	1.598	1.187	1.641	1.719	1.230	1.264	1.160	0.7531
105.0	1.385	1.543	1.558	1.297	1.589	1.461	1.229	1.259	1.050	0.8393
108.0	1.401	1.573	1.452	1.310	1.488	1.203	1.227	1.254	1.051	0.8505
111.0	1.422	1.588	1.633	1.319	1.643	0.9455	1.226	0.9650	1.221	0.8599
114.0	1.447	1.613	1.709	1.347	1.734	0.6876	0.9850	0.6755	0.9971	0.8693
117.0	1.497	1.649	1.713	1.382	1.084	0.4298	0.6157	0.3860	0.6232	0.9197
120.0	1.513	0.6594	1.689	1.427	0.4334	0.1719	0.2463	0.0965	0.2493	1.010
G/C	300.0	330.0								
0.0	100.7	100.6								
3.0	100.7	100.6								
6.0	100.3	100.2								
9.0	99.53	99.48								
12.0	98.30	98.40								
15.0	96.71	96.99								
18.0	94.70	95.20								
21.0	92.39	92.97								
24.0	89.79	90.54								
27.0	86.85	87.79								
30.0	83.69	84.82								
33.0	80.27	81.91								
36.0	76.65	78.71								
39.0	72.90	75.39								
42.0	68.99	71.72								
45.0	65.06	67.87								
48.0	61.24	63.84								
51.0	57.38	59.66								
54.0	53.39	55.39								
57.0	49.11	50.68								
60.0	44.58	46.23								
63.0	39.93	41.52								
66.0	35.25	36.64								
69.0	30.45	31.95								
72.0	25.65	27.08								
75.0	20.86	22.09								
78.0	16.17	17.47								
81.0	11.65	12.88								
84.0	7.499	8.779								
87.0	4.164	5.658								
90.0	2.117	3.373								

C Range: 0 - 360DEG  
 C Interval: 30.0DEG  
 Test Speed: HIGH  
 Temperature: 25.3DEG  
 Operators: LPC  
 Test Date: 2021-12-23

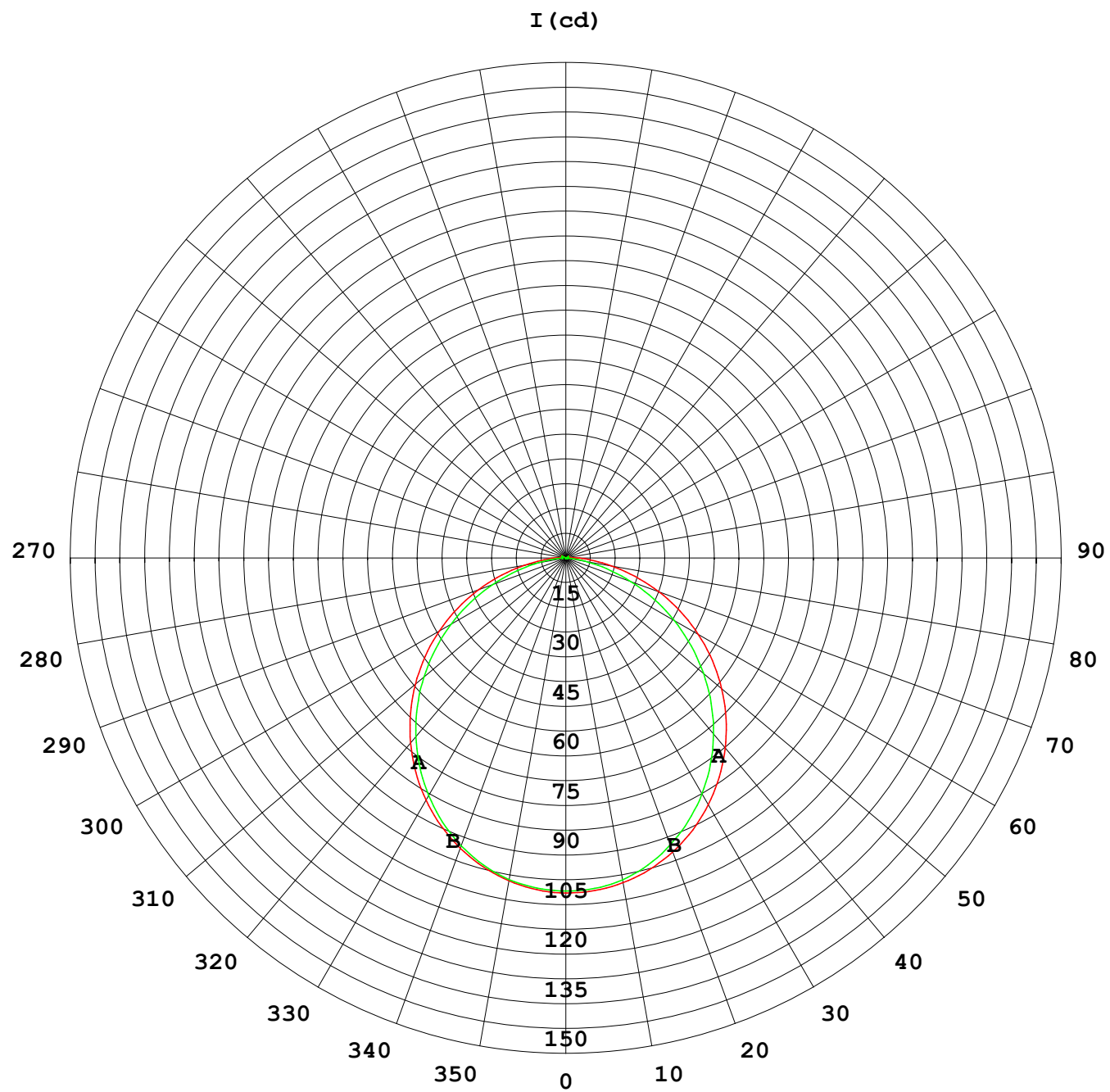
γ Range: 0 - 120DEG  
 γ Interval: 1.0DEG  
 Test System: EVERFINE GO-2000B\_V1 SYSTEM V2.0.362  
 Humidity: 65.0%  
 Test Distance: 9.200m [K=1.0000]  
 Remarks:

## Photometric Data Table [cd]

93.0	1.275	2.044
96.0	1.161	1.364
99.0	1.161	1.121
102.0	1.161	1.065
105.0	1.065	1.121
108.0	1.061	1.161
111.0	1.252	1.186
114.0	1.264	1.218
117.0	1.276	1.254
120.0	1.181	1.332

C Range: 0 - 360DEG  
C Interval: 30.0DEG  
Test Speed: HIGH  
Temperature: 25.3DEG  
Operators: LPC  
Test Date: 2021-12-23

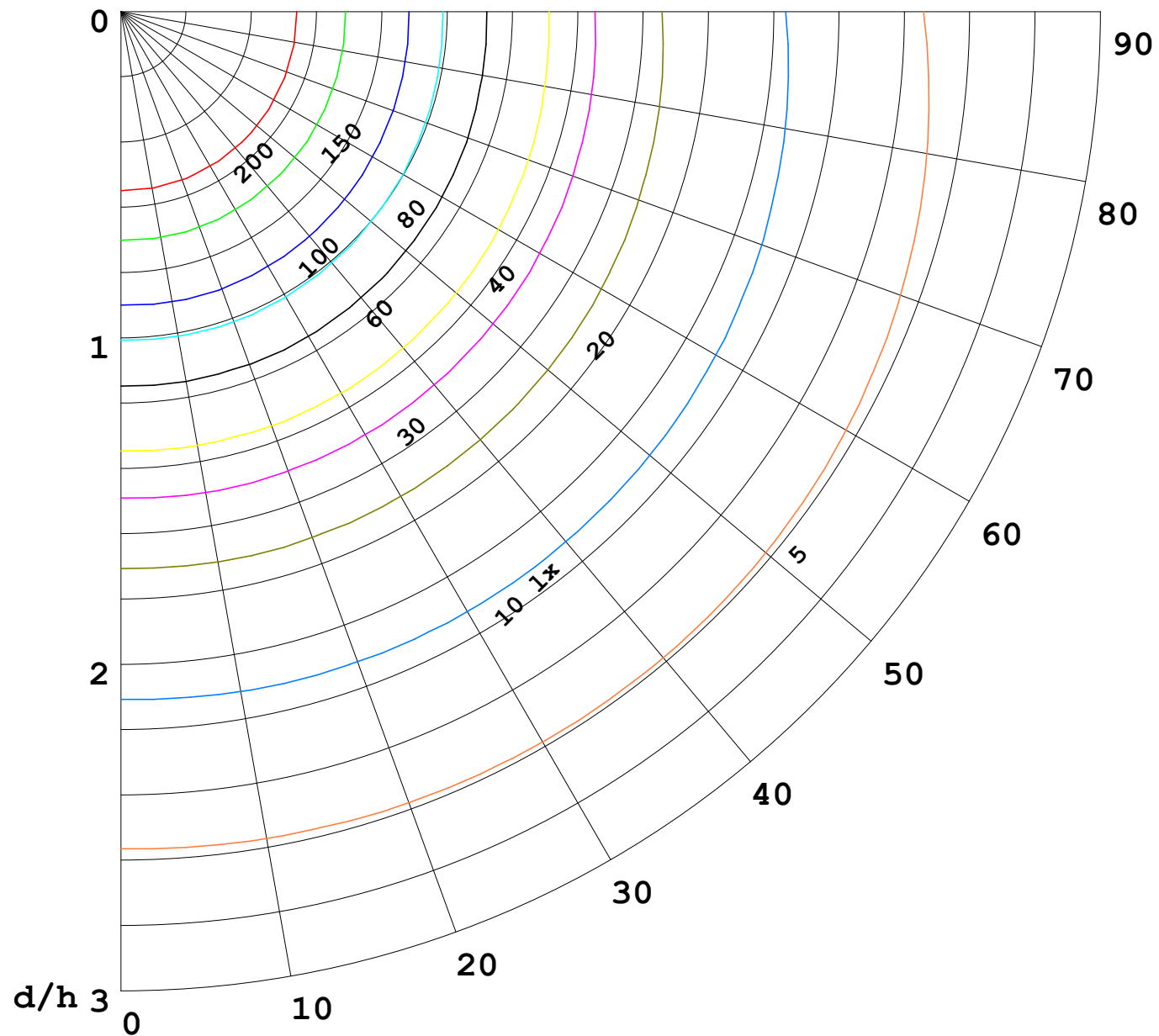
γ Range: 0 - 120DEG  
γ Interval: 1.0DEG  
Test System: EVERFINE GO-2000B\_V1 SYSTEM V2.0.362  
Humidity: 65.0%  
Test Distance: 9.200m [K=1.0000]  
Remarks:





1000 lm

$\kappa = 1$



F = 5000 lm  
 K = 0.7  
 Hcc = 0.0 m  
 Hfc = 0.0 m  
 Eave = 100 lx

	Pcc	Pw	Pfc
—	70	50	30
—	50	30	20

