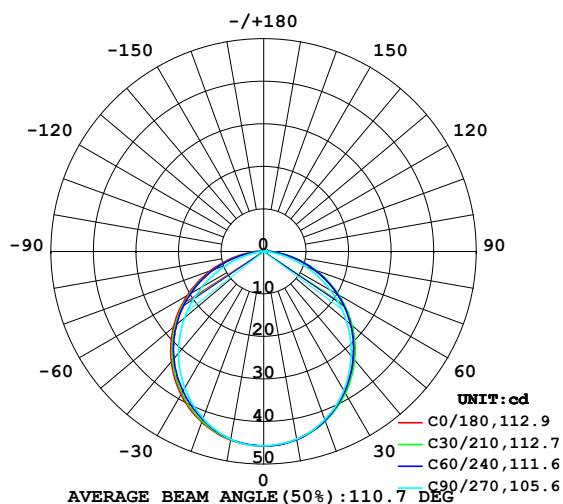


## LUMINAIRE PHOTOMETRIC TEST REPORT

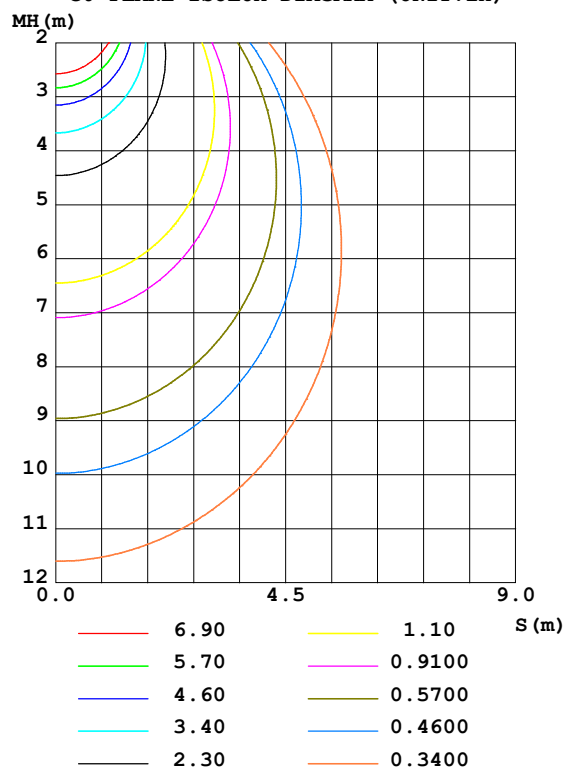
Test:U:24.00V I:0.3317A P:7.961W PF:1.000 Freq:50.00Hz Lamp Flux:130.961x1 lm		
NAME: SF15-24V-2835-120-2700+5700-80-5700	TYPE: 硅胶	WEIGHT:
SPEC.:	DIM.: 21*11.5MM	SERIAL No.:2021122312
MFR.: OLYMPIA	SUR.:1*0.0115	Shielding Angle:

DATA OF LAMP		PHOTOMETRIC DATA Eff: 16.45 lm/W			
MODEL	2835	I <sub>max</sub> (cd)	45.74	S/MH (C0/180)	1.26
NOMINAL POWER (W)	7.5	LOR (%)	100.0	S/MH (C90/270)	1.21
RATED VOLTAGE (V)	24	TOTAL FLUX (lm)	130.96	η UP, DN (C0-180)	0.8, 49.2
NOMINAL FLUX (lm)	130.961	CIE CLASS	DIRECT	η UP, DN (C180-360)	0.6, 49.5
LAMPS INSIDE	1	η up (%)	1.3	CIBSE SHR NOM	1.25
TEST VOLTAGE (V)	24	η down (%)	98.7	CIBSE SHR MAX	1.35

LUMINOUS INTENSITY DISTRIBUTION DIAGRAM



C0 PLANE ISOLUX DIAGRAM (UNIT:lx)



C Range: 0 - 360DEG  
 C Interval: 30.0DEG  
 Test Speed: HIGH  
 Temperature: 25.3DEG  
 Operators: LPC  
 Test Date: 2021-12-23

γ Range: 0 - 120DEG  
 γ Interval: 1.0DEG  
 Test System: EVERFINE GO-2000B\_V1 SYSTEM V2.0.362  
 Humidity: 65.0%  
 Test Distance: 9.200m [K=1.0000]  
 Remarks:

## ZONAL FLUX DIAGRAM

## ZONAL FLUX DIAGRAM:

$\gamma$	C0	C45	C90	C135	C180	C225	C270	C315	$\gamma$	$\Phi$ zone	$\Phi$ total	%lum, lamp
10	44.82	44.89	44.81	44.67	45.01	44.89	44.83	45.02	0- 10	4.324	4.324	3.3,3.3
20	42.24	42.38	42.08	42.01	42.68	42.25	41.73	42.33	10- 20	12.34	16.67	12.7,12.7
30	38.22	38.26	37.69	37.91	38.86	38.23	37.17	38.17	20- 30	18.57	35.24	26.9,26.9
40	33.00	33.01	32.00	32.64	33.80	33.08	31.22	33.03	30- 40	22.25	57.49	43.9,43.9
50	26.83	26.95	25.39	26.46	27.70	26.96	24.28	27.26	40- 50	22.99	80.48	61.5,61.5
60	19.95	20.19	18.14	19.51	20.81	20.05	16.76	20.56	50- 60	20.76	101.2	77.3,77.3
70	12.61	12.95	10.53	12.12	13.41	12.55	9.148	13.41	60- 70	15.86	117.1	89.4,89.4
80	5.610	5.900	3.517	5.084	6.205	5.299	2.357	6.219	70- 80	9.168	126.3	96.4,96.4
90	1.399	1.254	0.4382	1.065	1.465	0.9026	0.2063	1.197	80- 90	2.943	129.2	98.7,98.7
100	0.5680	0.6824	0.5077	0.7856	0.4784	0.4922	0.2261	0.4273	90-100	0.7206	129.9	99.2,99.2
110	0.5815	0.6690	0.5785	0.5603	0.2610	0.5179	0.3366	0.4750	100-110	0.5575	130.5	99.6,99.6
120	0.6232	0.4135	0.6131	0.1450	0.0435	0.3217	0.0603	0.4950	110-120	0.4563	130.9	100,100
130	0	0	0	0	0	0	0	0	120-130	0.0182	131.0	100,100
140	0	0	0	0	0	0	0	0	130-140	0	131.0	100,100
150	0	0	0	0	0	0	0	0	140-150	0	131.0	100,100
160	0	0	0	0	0	0	0	0	150-160	0	131.0	100,100
170	0	0	0	0	0	0	0	0	160-170	0	131.0	100,100
180	0	0	0	0	0	0	0	0	170-180	0	131.0	100,100
DEG	LUMINOUS INTENSITY:cd									UNIT:lm		

Conical surface Flux(90deg): 69.081 lm

%lum = 52.7%

%lamp = 52.7%

Conical surface Flux(120deg): 101.24 lm

%lum = 77.3%

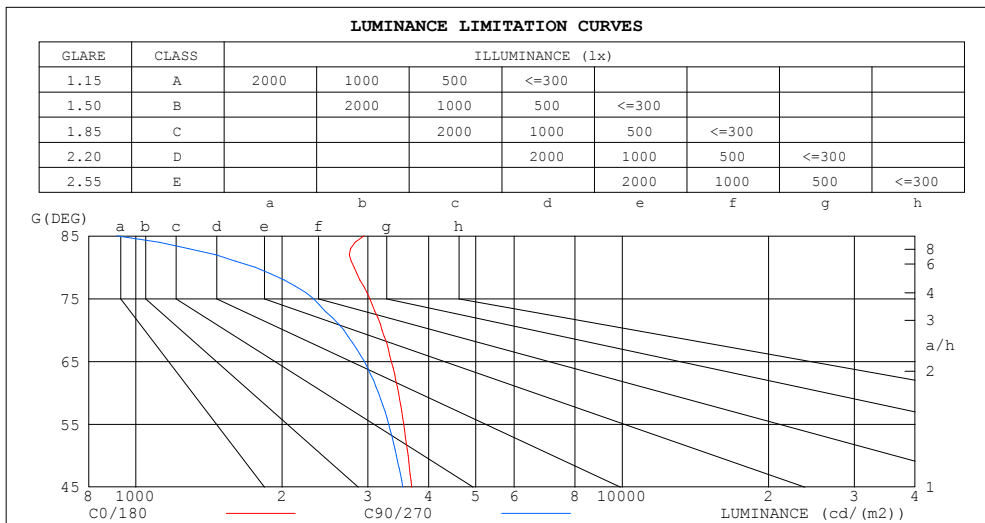
%lamp = 77.3%

C Range: 0 - 360DEG  
 C Interval: 30.0DEG  
 Test Speed: HIGH  
 Temperature:25.3DEG  
 Operators:LPC  
 Test Date:2021-12-23

$\gamma$  Range: 0 - 120DEG  
 $\gamma$  Interval: 1.0DEG  
 Test System:EVERFINE GO-2000B\_V1 SYSTEM V2.0.362  
 Humidity:65.0%  
 Test Distance:9.200m [K=1.0000]  
 Remarks:

## LUMINANCE LIMITATION CURVES

Test:U:24.00V I:0.3317A P:7.961W PF:1.000 Freq:50.00Hz Lamp Flux:130.961x1 lm		
NAME: SF15-24V-2835-120-2700+5700-80-5700	TYPE: 硅胶	WEIGHT:
SPEC.:	DIM.: 21*11.5MM	SERIAL No.:2021122312
MFR.: OLYMPIA	SUR.:1*0.0115	Shielding Angle:



LUMINANCE cd/(m2)		
G (DEG)	C0/180	C90/270
85	2948	914
80	2809	1761
75	3028	2320
70	3206	2676
65	3351	2950
60	3469	3155
55	3555	3310
50	3630	3435
45	3692	3540

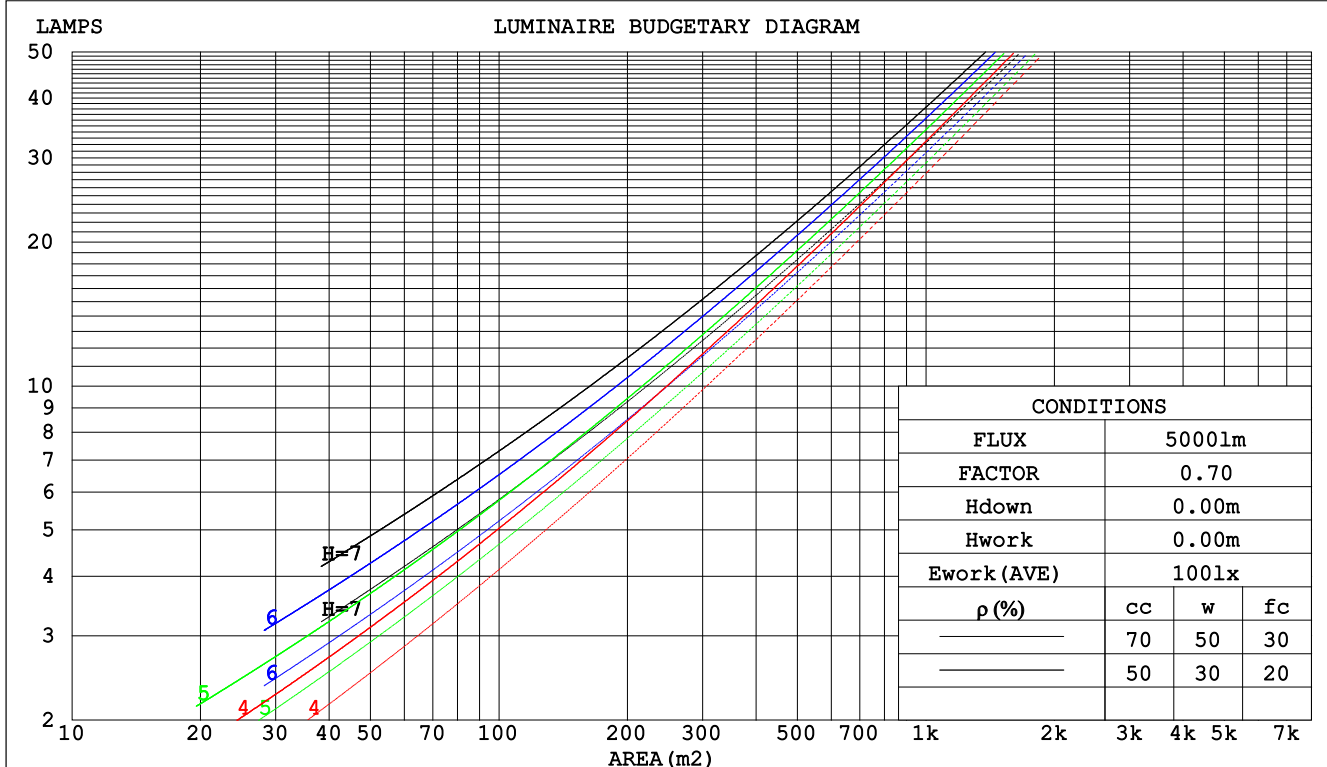
C Range: 0 - 360DEG  
C Interval: 30.0DEG  
Test Speed: HIGH  
Temperature:25.3DEG  
Operators:LPC  
Test Date:2021-12-23

γ Range: 0 - 120DEG  
γ Interval: 1.0DEG  
Test System:EVERFINE GO-2000B\_V1 SYSTEM V2.0.362  
Humidity:65.0%  
Test Distance:9.200m [K=1.0000]  
Remarks:

## CU AND LUMINAIRE BUDGETARY ESTIMATE DIAGRAM

Test:U:24.00V I:0.3317A P:7.961W PF:1.000 Freq:50.00Hz Lamp Flux:130.961x1 lm		
NAME: SF15-24V-2835-120-2700+5700-80-5700	TYPE: 硅胶	WEIGHT:
SPEC.:	DIM.: 21*11.5MM	SERIAL No.:2021122312
MFR.: OLYMPIA	SUR.:1*0.0115	Shielding Angle:

pcc	80%			70%			50%			30%			10%			0
pw	50%	30%	10%	50%	30%	10%	50%	30%	10%	50%	30%	10%	50%	30%	10%	0
pfc	20%			20%			20%			20%			20%			0
RCR	RCR:Room Cavity Ratio						Coefficients of Utilization(CU)									
0.0	1.19	1.19	1.19	1.16	1.16	1.16	1.10	1.10	1.10	1.05	1.05	1.05	1.01	1.01	1.01	.99
1.0	1.03	.99	.95	1.01	.97	.93	.96	.93	.90	.92	.90	.87	.88	.86	.84	.82
2.0	.90	.83	.77	.88	.82	.76	.84	.79	.74	.81	.76	.72	.77	.74	.71	.68
3.0	.79	.71	.64	.77	.70	.63	.74	.68	.62	.71	.66	.61	.68	.64	.60	.57
4.0	.70	.61	.54	.68	.60	.54	.66	.59	.53	.63	.57	.52	.61	.56	.51	.49
5.0	.62	.53	.47	.61	.53	.46	.59	.51	.46	.57	.50	.45	.55	.49	.44	.42
6.0	.56	.47	.41	.55	.47	.40	.53	.46	.40	.51	.45	.40	.50	.44	.39	.37
7.0	.51	.42	.36	.50	.42	.36	.48	.41	.35	.47	.40	.35	.45	.39	.35	.33
8.0	.46	.38	.32	.46	.38	.32	.44	.37	.32	.43	.36	.31	.42	.36	.31	.29
9.0	.43	.34	.29	.42	.34	.29	.41	.34	.28	.40	.33	.28	.38	.32	.28	.26
10.0	.39	.31	.26	.39	.31	.26	.38	.31	.26	.37	.30	.26	.36	.30	.25	.24



C Range: 0 - 360DEG  
 C Interval: 30.0DEG  
 Test Speed: HIGH  
 Temperature:25.3DEG  
 Operators:LPC  
 Test Date:2021-12-23

γ Range: 0 - 120DEG  
 γ Interval: 1.0DEG  
 Test System:EVERFINE GO-2000B\_V1 SYSTEM V2.0.362  
 Humidity:65.0%  
 Test Distance:9.200m [K=1.0000]  
 Remarks:

## WEC AND CCEC

Test:U:24.00V I:0.3317A P:7.961W PF:1.000 Freq:50.00Hz Lamp Flux:130.961x1 lm		
NAME: SF15-24V-2835-120-2700+5700-80-5700	TYPE: 硅胶	WEIGHT:
SPEC.:	DIM.: 21*11.5MM	SERIAL No.:2021122312
MFR.: OLYMPIA	SUR.:1*0.0115	Shielding Angle:

pcc	80%			70%			50%			30%			10%			0	
pw	50%	30%	10%	50%	30%	10%	50%	30%	10%	50%	30%	10%	50%	30%	10%	0	
pfc	20%			20%			20%			20%			20%			0	
RCR	RCR:Room Cavity Ratio						Wall Exitance Coefficients(WEC)										
0.0																	
1.0	.313	.178	.056	.306	.174	.055	.292	.167	.053	.279	.161	.052	.267	.155	.050		
2.0	.293	.161	.049	.286	.158	.049	.274	.152	.047	.263	.147	.046	.252	.143	.045		
3.0	.271	.144	.043	.265	.142	.043	.254	.137	.042	.243	.133	.041	.234	.130	.040		
4.0	.249	.130	.038	.244	.128	.038	.234	.124	.037	.225	.121	.036	.217	.118	.036		
5.0	.230	.117	.034	.226	.116	.034	.217	.113	.033	.209	.110	.033	.201	.108	.032		
6.0	.213	.107	.031	.209	.106	.030	.202	.103	.030	.194	.101	.030	.187	.099	.029		
7.0	.199	.098	.028	.195	.097	.028	.188	.095	.027	.181	.093	.027	.175	.091	.027		
8.0	.185	.091	.025	.182	.090	.025	.176	.088	.025	.170	.086	.025	.164	.084	.025		
9.0	.174	.084	.023	.171	.083	.023	.165	.082	.023	.160	.080	.023	.155	.079	.023		
10.0	.163	.078	.022	.161	.078	.022	.156	.076	.021	.151	.075	.021	.146	.074	.021		

pcc	80%			70%			50%			30%			10%			0
pw	50%	30%	10%	50%	30%	10%	50%	30%	10%	50%	30%	10%	50%	30%	10%	0
pfc	20%			20%			20%			20%			20%			0
RCR	RCR:Room Cavity Ratio						Ceiling Cavity Exitance Coefficients(CCEC)									
0.0	.201	.201	.201	.172	.172	.172	.117	.117	.117	.067	.067	.067	.022	.022	.022	
1.0	.191	.166	.144	.163	.143	.124	.112	.098	.086	.064	.057	.050	.021	.018	.016	
2.0	.183	.142	.108	.157	.122	.094	.107	.085	.065	.062	.049	.038	.020	.016	.012	
3.0	.175	.125	.085	.150	.108	.073	.103	.075	.051	.059	.044	.030	.019	.014	.010	
4.0	.167	.111	.069	.144	.096	.060	.099	.067	.042	.057	.039	.025	.018	.013	.008	
5.0	.160	.101	.058	.137	.087	.050	.095	.061	.035	.055	.036	.021	.018	.012	.007	
6.0	.153	.093	.050	.131	.080	.043	.091	.056	.031	.053	.033	.018	.017	.011	.006	
7.0	.146	.086	.044	.125	.074	.038	.087	.052	.027	.050	.031	.016	.016	.010	.005	
8.0	.139	.080	.039	.120	.069	.034	.083	.049	.024	.048	.029	.014	.016	.009	.005	
9.0	.133	.075	.036	.115	.065	.031	.080	.046	.022	.046	.027	.013	.015	.009	.004	
10.0	.128	.071	.033	.110	.062	.029	.076	.043	.020	.045	.026	.012	.014	.008	.004	

C Range: 0 - 360DEG  
 C Interval: 30.0DEG  
 Test Speed: HIGH  
 Temperature:25.3DEG  
 Operators:LPC  
 Test Date:2021-12-23

γ Range: 0 - 120DEG  
 γ Interval: 1.0DEG  
 Test System:EVERFINE GO-2000B\_V1 SYSTEM V2.0.362  
 Humidity:65.0%  
 Test Distance:9.200m [K=1.0000]  
 Remarks:

### UGR(Unified Glare Rating) Table

Test:U:24.00V I:0.3317A P:7.961W PF:1.000 Freq:50.00Hz Lamp Flux:130.961x1 lm										
NAME: SF15-24V-2835-120-2700+5700-80-5700					TYPE:硅胶			WEIGHT:		
SPEC.:					DIM.: 21*11.5MM			SERIAL No.:2021122312		
MFR.: OLYMPIA					SUR.:1*0.0115			Shielding Angle:		
ceiling/cavity	0.7	0.7	0.5	0.5	0.3	0.7	0.7	0.5	0.5	0.3
walls	0.5	0.3	0.5	0.3	0.3	0.5	0.3	0.5	0.3	0.3
working plane	0.2	0.2	0.2	0.2	0.2	0.2	0.2	0.2	0.2	0.2
Room dimensions	Viewed crosswise					Viewed endwise				
x = 2H y = 2H	24.4	25.9	24.6	26.1	26.3	24.1	25.6	24.4	25.8	26.0
3H	25.9	27.3	26.2	27.6	27.8	25.5	26.8	25.8	27.1	27.4
4H	26.6	27.9	26.9	28.2	28.4	26.0	27.3	26.3	27.6	27.8
6H	27.0	28.3	27.4	28.6	28.9	26.2	27.5	26.6	27.8	28.1
8H	27.2	28.4	27.6	28.7	29.0	26.3	27.5	26.6	27.8	28.1
12H	27.3	28.5	27.7	28.8	29.1	26.3	27.4	26.6	27.8	28.1
4H 2H	25.0	26.3	25.3	26.6	26.9	24.8	26.1	25.1	26.4	26.7
3H	26.8	27.9	27.1	28.2	28.6	26.4	27.5	26.8	27.9	28.2
4H	27.5	28.6	27.9	28.9	29.3	27.0	28.1	27.4	28.4	28.8
6H	28.1	29.1	28.6	29.5	29.9	27.5	28.4	27.9	28.8	29.2
8H	28.4	29.2	28.8	29.6	30.0	27.6	28.4	28.0	28.8	29.2
12H	28.6	29.4	29.0	29.8	30.2	27.6	28.4	28.0	28.8	29.2
8H 4H	27.8	28.7	28.3	29.1	29.5	27.4	28.3	27.8	28.7	29.1
6H	28.6	29.3	29.1	29.8	30.2	28.0	28.7	28.5	29.2	29.6
8H	28.9	29.6	29.4	30.0	30.5	28.2	28.9	28.7	29.3	29.8
12H	29.2	29.8	29.7	30.3	30.8	28.3	28.9	28.8	29.4	29.9
12H 4H	27.8	28.6	28.3	29.1	29.5	27.4	28.2	27.9	28.6	29.1
6H	28.7	29.3	29.2	29.8	30.3	28.1	28.8	28.6	29.2	29.7
8H	29.1	29.6	29.6	30.1	30.6	28.4	28.9	28.9	29.4	29.9
Variations with the observer position at spacings:										
S = 1.0H	+ 0.1 / - 0.2					+ 0.2 / - 0.2				
1.5H	+ 0.2 / - 0.3					+ 0.2 / - 0.4				
2.0H	+ 0.1 / - 0.3					+ 0.2 / - 0.4				

CIE Pub.117, 131.0 lm Total Lamp Luminous Flux Correct (8log(F/F0) = -7.1)

C Range: 0 - 360DEG  
C Interval: 30.0DEG  
Test Speed: HIGH  
Temperature:25.3DEG  
Operators:LPC  
Test Date:2021-12-23

γ Range: 0 - 120DEG  
γ Interval: 1.0DEG  
Test System:EVERFINE GO-2000B\_V1 SYSTEM V2.0.362  
Humidity:65.0%  
Test Distance:9.200m [K=1.0000]  
Remarks:

### UTILIZATION FACTORS TABLE

Test:U:24.00V I:0.3317A P:7.961W PF:1.000 Freq:50.00Hz Lamp Flux:130.961x1 lm		
NAME: SF15-24V-2835-120-2700+5700-80-5700	TYPE:硅胶	WEIGHT:
SPEC.:	DIM.: 21*11.5MM	SERIAL No.:2021122312
MFR.: OLYMPIA	SUR.:1*0.0115	Shielding Angle:

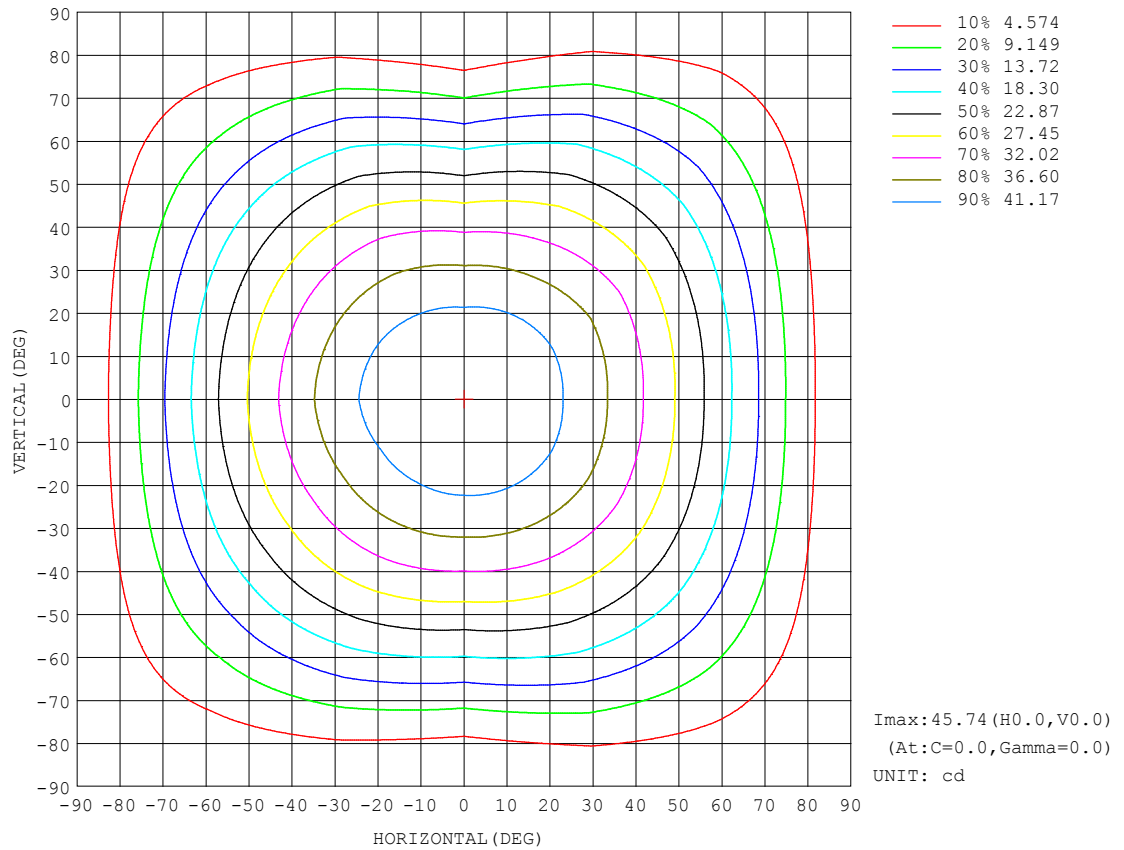
REFLECTANCE										
Ceiling	0.8	0.8	0.8	0.7	0.7	0.7	0.5	0.5	0.5	0
Walls	0.7	0.5	0.3	0.7	0.5	0.3	0.7	0.5	0.3	0
Working plane	0.2	0.2	0.2	0.2	0.2	0.2	0.2	0.2	0.2	0
ROOM INDEX	UTILIZATION FACTORS (PERCENT) $k(RI) \times RCR = 5$									
$k = 0.60$	57	45	38	56	45	38	55	45	38	32
0.80	67	55	48	66	55	48	64	54	47	40
1.00	75	64	57	74	64	57	72	65	56	49
1.25	82	72	65	81	71	64	78	70	63	56
1.50	87	77	70	86	76	70	83	75	69	61
2.00	94	86	79	92	84	78	89	82	77	69
2.50	98	90	84	96	89	83	92	86	81	73
3.00	102	95	89	99	93	88	95	90	86	77
4.00	106	100	95	103	98	94	99	94	91	82
5.00	108	103	99	106	101	97	101	97	94	85
ROOM INDEX	UF (total)									Direct
According to DIN EN 13032-2 2004			Suspended					SHRNOM = 1.25		

C Range: 0 - 360DEG  
C Interval: 30.0DEG  
Test Speed: HIGH  
Temperature:25.3DEG  
Operators:LPC  
Test Date:2021-12-23

$\gamma$  Range: 0 - 120DEG  
 $\gamma$  Interval: 1.0DEG  
Test System:EVERFINE GO-2000B\_V1 SYSTEM V2.0.362  
Humidity:65.0%  
Test Distance:9.200m [K=1.0000]  
Remarks:

## ISOCANDELA DIAGRAM

Test:U:24.00V I:0.3317A P:7.961W PF:1.000 Freq:50.00Hz Lamp Flux:130.961x1 lm		
NAME: SF15-24V-2835-120-2700+5700-80-5700	TYPE: 硅胶	WEIGHT:
SPEC.:	DIM.: 21*11.5MM	SERIAL No.:2021122312
MFR.: OLYMPIA	SUR.:1*0.0115	Shielding Angle:



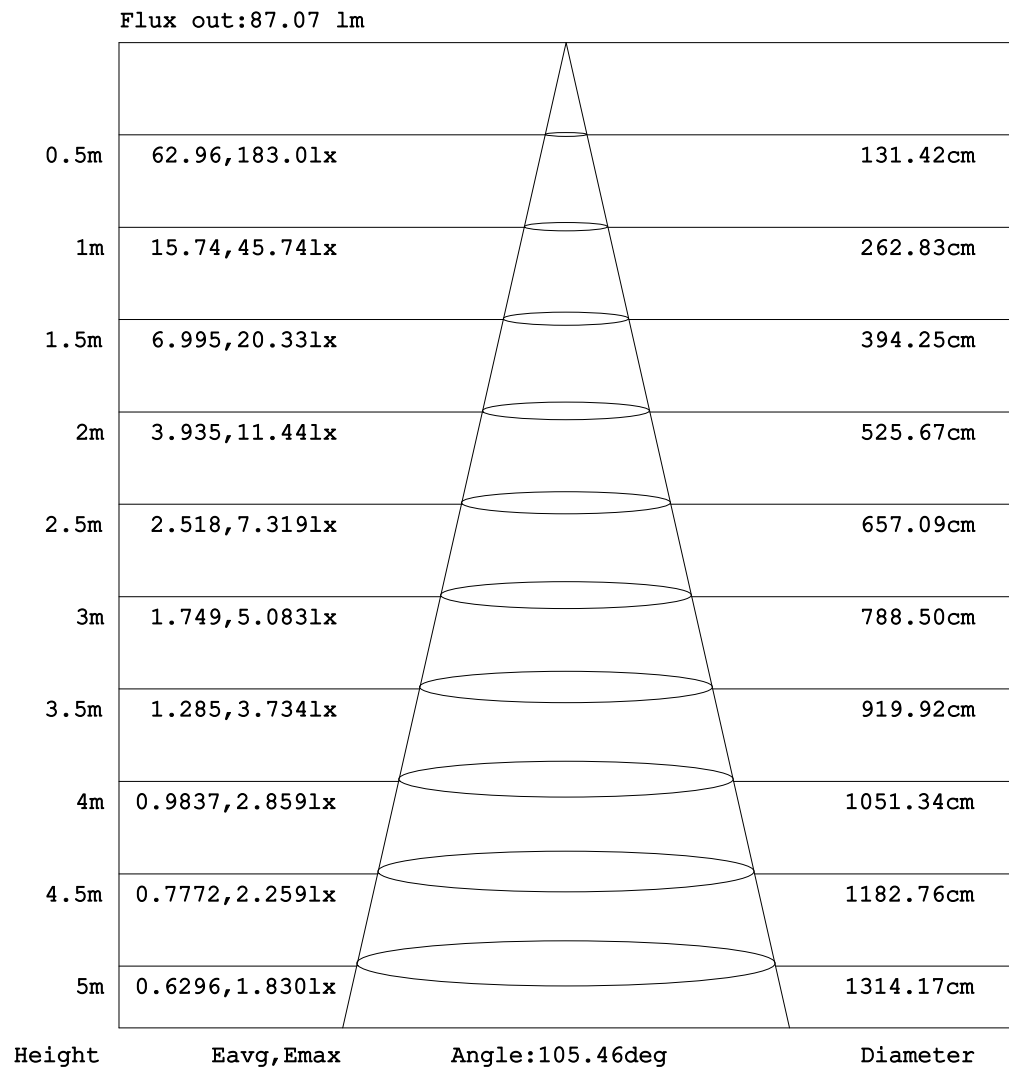
C Range: 0 - 360DEG  
C Interval: 30.0DEG  
Test Speed: HIGH  
Temperature: 25.3DEG  
Operators: LPC  
Test Date: 2021-12-23

$\gamma$  Range: 0 - 120DEG  
 $\gamma$  Interval: 1.0DEG  
Test System: EVERFINE GO-2000B\_V1 SYSTEM V2.0.362  
Humidity: 65.0%  
Test Distance: 9.200m [K=1.0000]  
Remarks:



## AAI Figure

Test:U:24.00V I:0.3317A P:7.961W PF:1.000 Freq:50.00Hz Lamp Flux:130.961x1 lm		
NAME: SF15-24V-2835-120-2700+5700-80-5700	TYPE: 硅胶	WEIGHT:
SPEC.:	DIM.: 21*11.5MM	SERIAL No.:2021122312
MFR.: OLYMPIA	SUR.:1*0.0115	Shielding Angle:



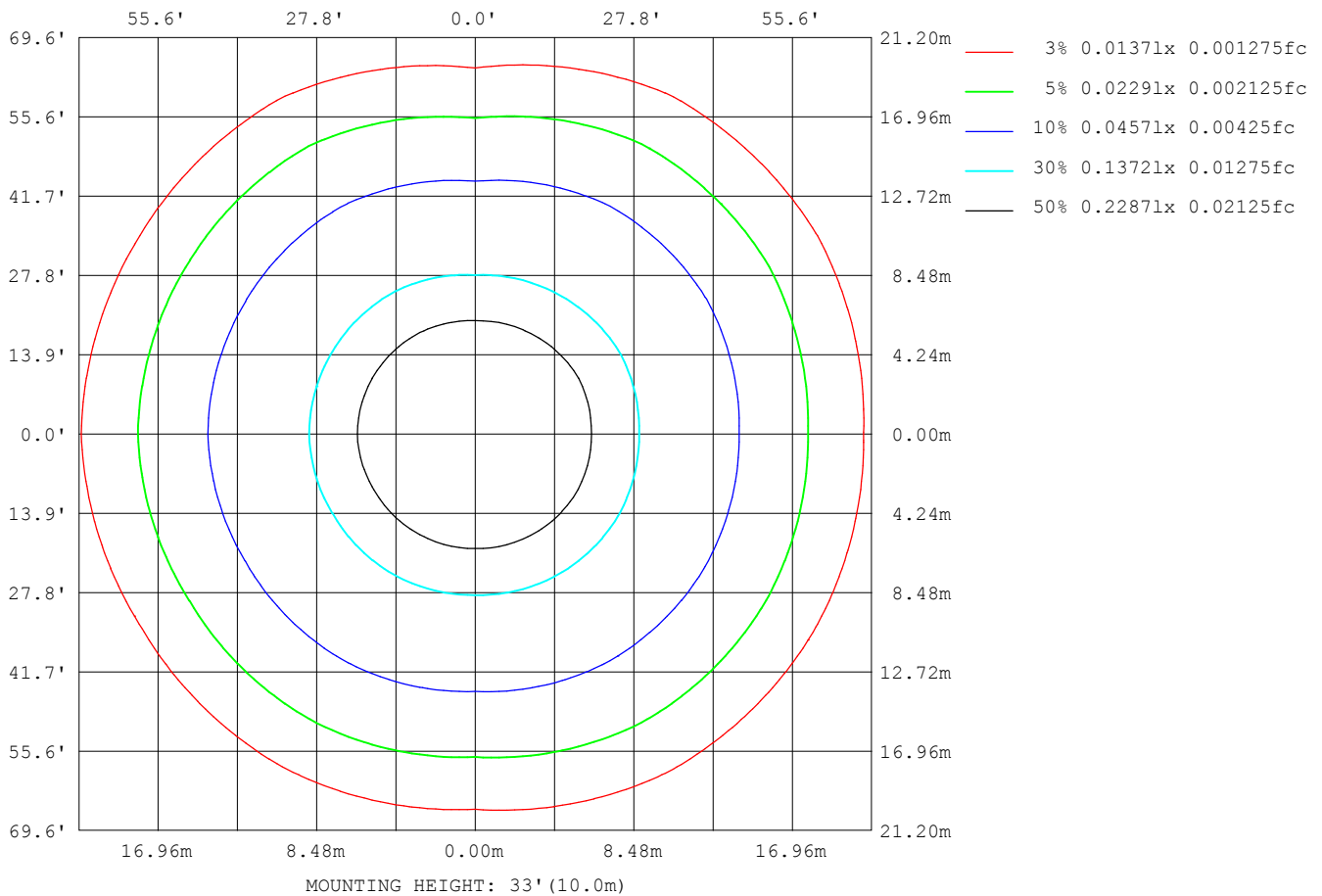
Note:The Curves indicate the illuminated area and the average illumination when the luminaire is at different distance.

C Range: 0 - 360DEG  
 C Interval: 30.0DEG  
 Test Speed: HIGH  
 Temperature:25.3DEG  
 Operators:LPC  
 Test Date:2021-12-23

γ Range: 0 - 120DEG  
 γ Interval: 1.0DEG  
 Test System:EVERFINE GO-2000B\_V1 SYSTEM V2.0.362  
 Humidity:65.0%  
 Test Distance:9.200m [K=1.0000]  
 Remarks:

## ISOLUX DIAGRAM

Test:U:24.00V I:0.3317A P:7.961W PF:1.000 Freq:50.00Hz Lamp Flux:130.96lx1 lm		
NAME: SF15-24V-2835-120-2700+5700-80-5700	TYPE: 硅胶	WEIGHT:
SPEC.:	DIM.: 21*11.5MM	SERIAL No.:2021122312
MFR.: OLYMPIA	SUR.:1*0.0115	Shielding Angle:



C Range: 0 - 360DEG  
C Interval: 30.0DEG  
Test Speed: HIGH  
Temperature:25.3DEG  
Operators:LPC  
Test Date:2021-12-23

$\gamma$  Range: 0 - 120DEG  
 $\gamma$  Interval: 1.0DEG  
Test System:EVERFINE GO-2000B\_V1 SYSTEM V2.0.362  
Humidity:65.0%  
Test Distance:9.200m [K=1.0000]  
Remarks:

## LED Avg.L Report

Test:U:24.00V I:0.3317A P:7.961W PF:1.000 Freq:50.00Hz Lamp Flux:130.961x1 lm		
NAME: SF15-24V-2835-120-2700+5700-80-5700	TYPE:硅胶	WEIGHT:
SPEC.:	DIM.: 21*11.5MM	SERIAL No.:2021122312
MFR.: OLYMPIA	SUR.:1*0.0115	Shielding Angle:

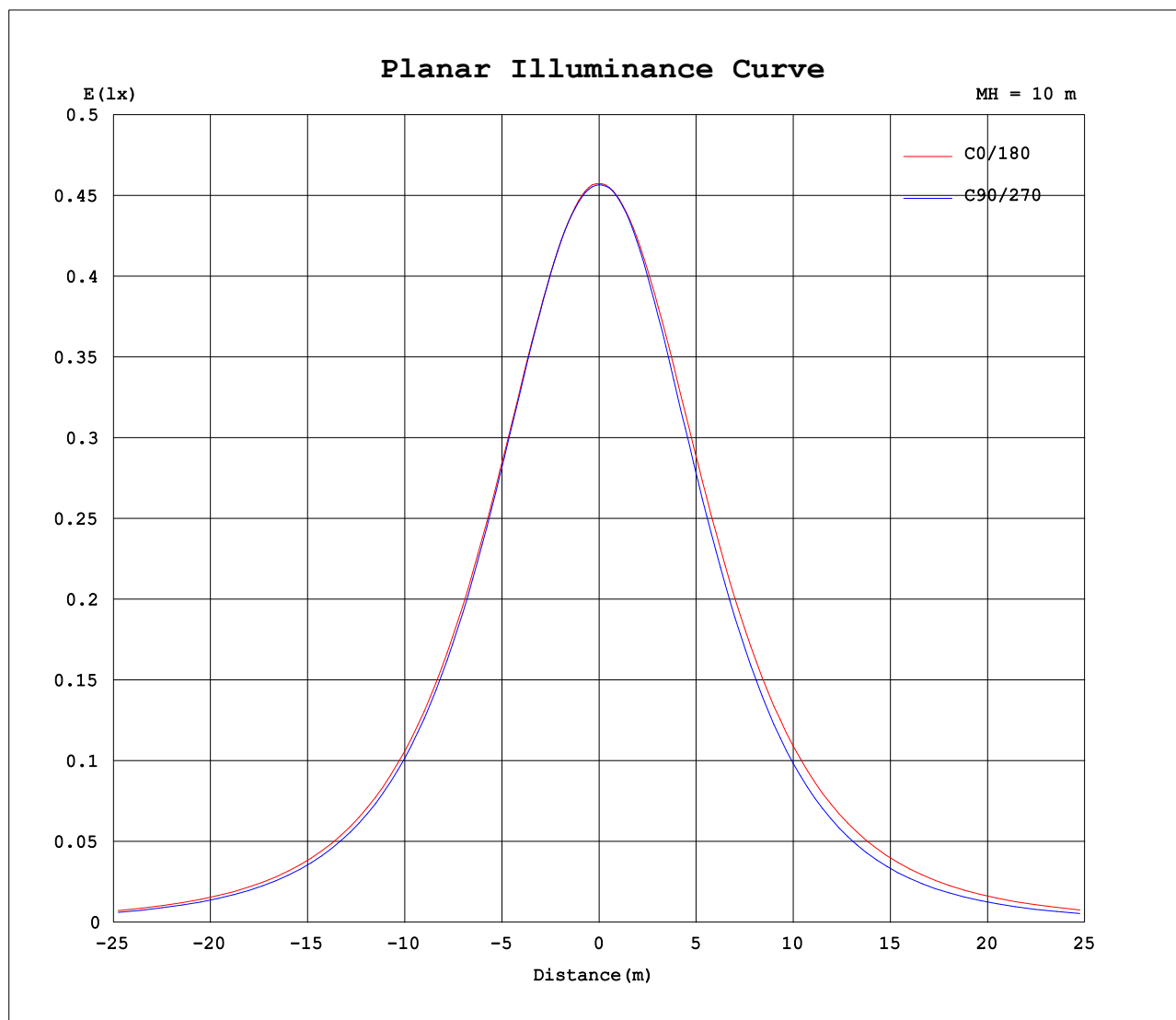
AvgL	cd/m2
L_0~180 (65) av	3438
L_0~180 (75) av	3140
L_0~180 (85) av	3159
L_90~270 (65) av	2805
L_90~270 (75) av	2094
L_90~270 (85) av	639
L_45 (65) av	3420
L_45 (75) av	3109
L_45 (85) av	2856

Standard: GB/T 29293-2012

C Range: 0 - 360DEG  
C Interval: 30.0DEG  
Test Speed: HIGH  
Temperature:25.3DEG  
Operators:LPC  
Test Date:2021-12-23

γ Range: 0 - 120DEG  
γ Interval: 1.0DEG  
Test System:EVERFINE GO-2000B\_V1 SYSTEM V2.0.362  
Humidity:65.0%  
Test Distance:9.200m [K=1.0000]  
Remarks:

## Planar Illuminance Curve



C Range: 0 - 360DEG  
C Interval: 30.0DEG  
Test Speed: HIGH  
Temperature: 25.3DEG  
Operators: LPC  
Test Date: 2021-12-23

$\gamma$  Range: 0 - 120DEG  
 $\gamma$  Interval: 1.0DEG  
Test System: EVERFINE GO-2000B\_V1 SYSTEM V2.0.362  
Humidity: 65.0%  
Test Distance: 9.200m [K=1.0000]  
Remarks:

## LUMINOUS DISTRIBUTION INTENSITY DATA

Test:U:24.00V I:0.3317A P:7.961W PF:1.000 Freq:50.00Hz Lamp Flux:130.961x1 lm		
NAME: SF15-24V-2835-120-2700+5700-80-5700	TYPE: 硅胶	WEIGHT:
SPEC.:	DIM.: 21*11.5MM	SERIAL No.:2021122312
MFR.: OLYMPIA	SUR.:1*0.0115	Shielding Angle:

Table--1

UNIT: cd

C (DEG) γ (DEG)	0	30	60	90	120	150	180	210	240	270	300	330						
0	45.7	45.7	45.7	45.7	45.7	45.7	45.7	45.7	45.7	45.7	45.7	45.7						
5	45.5	45.5	45.5	45.4	45.4	45.4	45.6	45.6	45.5	45.5	45.5	45.6						
10	44.8	44.9	44.9	44.8	44.7	44.7	45.0	44.9	44.8	44.8	45.0	45.1						
15	43.7	43.9	43.8	43.7	43.5	43.6	44.0	43.9	43.6	43.5	43.8	44.1						
20	42.2	42.5	42.3	42.1	41.9	42.1	42.7	42.5	42.0	41.7	42.1	42.5						
25	40.4	40.6	40.4	40.1	40.0	40.2	41.0	40.6	40.1	39.7	40.1	40.6						
30	38.2	38.5	38.1	37.7	37.8	38.0	38.9	38.5	38.0	37.2	37.8	38.6						
35	35.7	36.0	35.5	35.0	35.3	35.5	36.5	36.1	35.5	34.3	35.1	36.3						
40	33.0	33.3	32.7	32.0	32.5	32.8	33.8	33.3	32.8	31.2	32.4	33.7						
45	30.0	30.3	29.8	28.8	29.5	29.8	30.9	30.3	29.9	27.9	29.7	30.8						
50	26.8	27.2	26.7	25.4	26.3	26.6	27.7	27.2	26.8	24.3	26.8	27.7						
55	23.5	23.8	23.4	21.8	22.9	23.2	24.3	23.8	23.4	20.6	23.6	24.4						
60	19.9	20.4	20.0	18.1	19.4	19.6	20.8	20.2	19.9	16.8	20.2	20.9						
65	16.3	16.8	16.4	14.3	15.8	15.9	17.1	16.5	16.2	12.9	16.7	17.4						
70	12.6	13.1	12.8	10.5	12.1	12.2	13.4	12.6	12.5	9.15	13.1	13.7						
75	9.01	9.49	9.21	6.90	8.39	8.54	9.68	8.91	8.71	5.56	9.43	10.1						
80	5.61	6.01	5.79	3.52	4.97	5.20	6.21	5.45	5.15	2.36	5.91	6.52						
85	2.96	3.10	2.80	0.92	2.25	2.65	3.38	2.79	2.22	0.36	2.80	3.44						
90	1.40	1.41	1.10	0.44	0.95	1.18	1.46	1.14	0.67	0.21	0.89	1.51						
95	0.70	0.71	0.74	0.46	0.81	0.78	0.59	0.56	0.47	0.21	0.50	0.64						
100	0.57	0.67	0.70	0.51	0.80	0.77	0.48	0.53	0.46	0.23	0.43	0.42						
105	0.57	0.69	0.65	0.56	0.67	0.60	0.37	0.53	0.41	0.31	0.40	0.43						
110	0.58	0.65	0.69	0.58	0.70	0.42	0.26	0.53	0.50	0.34	0.50	0.45						
115	0.62	0.38	0.76	0.60	0.77	0.25	0.15	0.54	0.37	0.36	0.52	0.47						
120	0.62	0.11	0.72	0.61	0.22	0.07	0.04	0.54	0.11	0.06	0.46	0.53						
125	0.00	0.00	0.00	0.00	0.00	0.00	0.00	0.00	0.00	0.00	0.00	0.00						
130	0.00	0.00	0.00	0.00	0.00	0.00	0.00	0.00	0.00	0.00	0.00	0.00						
135	0.00	0.00	0.00	0.00	0.00	0.00	0.00	0.00	0.00	0.00	0.00	0.00						
140	0.00	0.00	0.00	0.00	0.00	0.00	0.00	0.00	0.00	0.00	0.00	0.00						
145	0.00	0.00	0.00	0.00	0.00	0.00	0.00	0.00	0.00	0.00	0.00	0.00						
150	0.00	0.00	0.00	0.00	0.00	0.00	0.00	0.00	0.00	0.00	0.00	0.00						
155	0.00	0.00	0.00	0.00	0.00	0.00	0.00	0.00	0.00	0.00	0.00	0.00						
160	0.00	0.00	0.00	0.00	0.00	0.00	0.00	0.00	0.00	0.00	0.00	0.00						
165	0.00	0.00	0.00	0.00	0.00	0.00	0.00	0.00	0.00	0.00	0.00	0.00						
170	0.00	0.00	0.00	0.00	0.00	0.00	0.00	0.00	0.00	0.00	0.00	0.00						
175	0.00	0.00	0.00	0.00	0.00	0.00	0.00	0.00	0.00	0.00	0.00	0.00						
180	0.00	0.00	0.00	0.00	0.00	0.00	0.00	0.00	0.00	0.00	0.00	0.00						

C Range: 0 - 360DEG  
C Interval: 30.0DEG  
Test Speed: HIGH  
Temperature:25.3DEG  
Operators:LPC  
Test Date:2021-12-23

γ Range: 0 - 120DEG  
γ Interval: 1.0DEG  
Test System:EVERFINE GO-2000B\_V1 SYSTEM V2.0.362  
Humidity:65.0%  
Test Distance:9.200m [K=1.0000]  
Remarks:

## Photometric Data Table [cd]

G/C	0.0	30.0	60.0	90.0	120.0	150.0	180.0	210.0	240.0	270.0
0.0	45.74	45.71	45.69	45.67	45.67	45.66	45.74	45.71	45.69	45.67
3.0	45.69	45.63	45.67	45.58	45.58	45.52	45.70	45.69	45.61	45.67
6.0	45.42	45.41	45.44	45.34	45.30	45.25	45.50	45.46	45.39	45.44
9.0	45.00	45.04	45.06	44.97	44.87	44.82	45.15	45.09	45.01	45.05
12.0	44.42	44.53	44.54	44.39	44.28	44.24	44.67	44.56	44.41	44.37
15.0	43.71	43.87	43.82	43.67	43.52	43.56	44.03	43.88	43.64	43.51
18.0	42.87	43.04	42.95	42.76	42.63	42.69	43.26	43.07	42.69	42.56
21.0	41.90	42.11	41.93	41.70	41.58	41.74	42.35	42.13	41.67	41.31
24.0	40.79	41.01	40.76	40.52	40.42	40.62	41.33	41.01	40.53	40.08
27.0	39.57	39.77	39.48	39.12	39.16	39.36	40.14	39.84	39.29	38.62
30.0	38.22	38.47	38.06	37.69	37.78	38.04	38.86	38.49	37.96	37.17
33.0	36.77	37.03	36.55	36.09	36.30	36.57	37.47	37.03	36.54	35.48
36.0	35.23	35.48	34.96	34.39	34.74	35.00	35.96	35.57	35.01	33.73
39.0	33.57	33.87	33.30	32.61	33.08	33.36	34.36	33.86	33.39	31.87
42.0	31.83	32.16	31.57	30.74	31.34	31.62	32.66	32.17	31.70	29.89
45.0	30.02	30.35	29.80	28.79	29.52	29.79	30.87	30.33	29.91	27.85
48.0	28.13	28.50	27.94	26.80	27.62	27.91	29.00	28.44	28.04	25.72
51.0	26.17	26.54	26.05	24.69	25.66	25.92	27.06	26.54	26.10	23.55
54.0	24.15	24.54	24.10	22.55	23.64	23.88	25.03	24.44	24.08	21.34
57.0	22.08	22.48	22.08	20.38	21.55	21.81	22.95	22.33	22.02	19.07
60.0	19.95	20.38	20.00	18.14	19.42	19.61	20.81	20.22	19.87	16.76
63.0	17.78	18.23	17.88	15.85	17.25	17.40	18.62	18.03	17.68	14.48
66.0	15.56	16.07	15.69	13.56	15.03	15.20	16.41	15.73	15.47	12.17
69.0	13.35	13.87	13.52	11.26	12.78	12.94	14.14	13.43	13.21	9.897
72.0	11.18	11.66	11.42	9.008	10.57	10.70	11.88	11.23	10.94	7.697
75.0	9.014	9.493	9.215	6.905	8.386	8.538	9.678	8.908	8.708	5.560
78.0	6.912	7.352	7.104	4.834	6.264	6.457	7.557	6.886	6.537	3.554
81.0	4.991	5.341	5.118	2.884	4.328	4.593	5.577	4.820	4.496	1.839
84.0	3.393	3.593	3.309	1.342	2.695	3.081	3.874	3.292	2.723	0.5867
87.0	2.200	2.274	1.834	0.4920	1.546	1.922	2.484	1.989	1.419	0.2417
90.0	1.399	1.405	1.103	0.4382	0.9463	1.185	1.465	1.138	0.6672	0.2063
93.0	0.9009	0.9135	0.7897	0.4473	0.8092	0.8288	0.8177	0.6644	0.4702	0.2062
96.0	0.6290	0.7003	0.7304	0.4675	0.8032	0.7806	0.5654	0.5429	0.4642	0.2061
99.0	0.5730	0.6764	0.7048	0.4927	0.7986	0.7757	0.5002	0.5278	0.4582	0.2160
102.0	0.5707	0.6785	0.6793	0.5530	0.7941	0.7037	0.4349	0.5292	0.4522	0.2814
105.0	0.5747	0.6886	0.6538	0.5626	0.6688	0.5981	0.3697	0.5306	0.4122	0.3116
108.0	0.5788	0.7086	0.6681	0.5722	0.6833	0.4926	0.3045	0.5321	0.4675	0.3266
111.0	0.5828	0.5954	0.7134	0.5817	0.7234	0.3870	0.2392	0.5335	0.5227	0.3417
114.0	0.6179	0.4330	0.7588	0.5981	0.7639	0.2815	0.1740	0.5349	0.4222	0.3567
117.0	0.6181	0.2706	0.7458	0.6041	0.5492	0.1759	0.1087	0.5363	0.2639	0.2412
120.0	0.6232	0.1082	0.7187	0.6131	0.2197	0.0704	0.0435	0.5378	0.1055	0.0603
G/C	300.0	330.0								
0.0	45.67	45.66								
3.0	45.64	45.67								
6.0	45.47	45.53								
9.0	45.14	45.21								
12.0	44.54	44.72								
15.0	43.77	44.07								
18.0	42.83	43.21								
21.0	41.75	42.19								
24.0	40.56	41.01								
27.0	39.22	39.84								
30.0	37.75	38.59								
33.0	36.21	37.28								
36.0	34.58	35.83								
39.0	32.90	34.23								
42.0	31.29	32.53								
45.0	29.65	30.80								
48.0	27.97	28.96								
51.0	26.19	27.07								
54.0	24.25	25.09								
57.0	22.25	23.05								
60.0	20.20	20.93								
63.0	18.10	18.83								
66.0	15.98	16.68								
69.0	13.80	14.45								
72.0	11.62	12.27								
75.0	9.432	10.05								
78.0	7.301	7.862								
81.0	5.255	5.846								
84.0	3.366	3.982								
87.0	1.816	2.507								
90.0	0.8877	1.505								

C Range: 0 - 360DEG  
 C Interval: 30.0DEG  
 Test Speed: HIGH  
 Temperature: 25.3DEG  
 Operators: LPC  
 Test Date: 2021-12-23

γ Range: 0 - 120DEG  
 γ Interval: 1.0DEG  
 Test System: EVERFINE GO-2000B\_V1 SYSTEM V2.0.362  
 Humidity: 65.0%  
 Test Distance: 9.200m [K=1.0000]  
 Remarks:

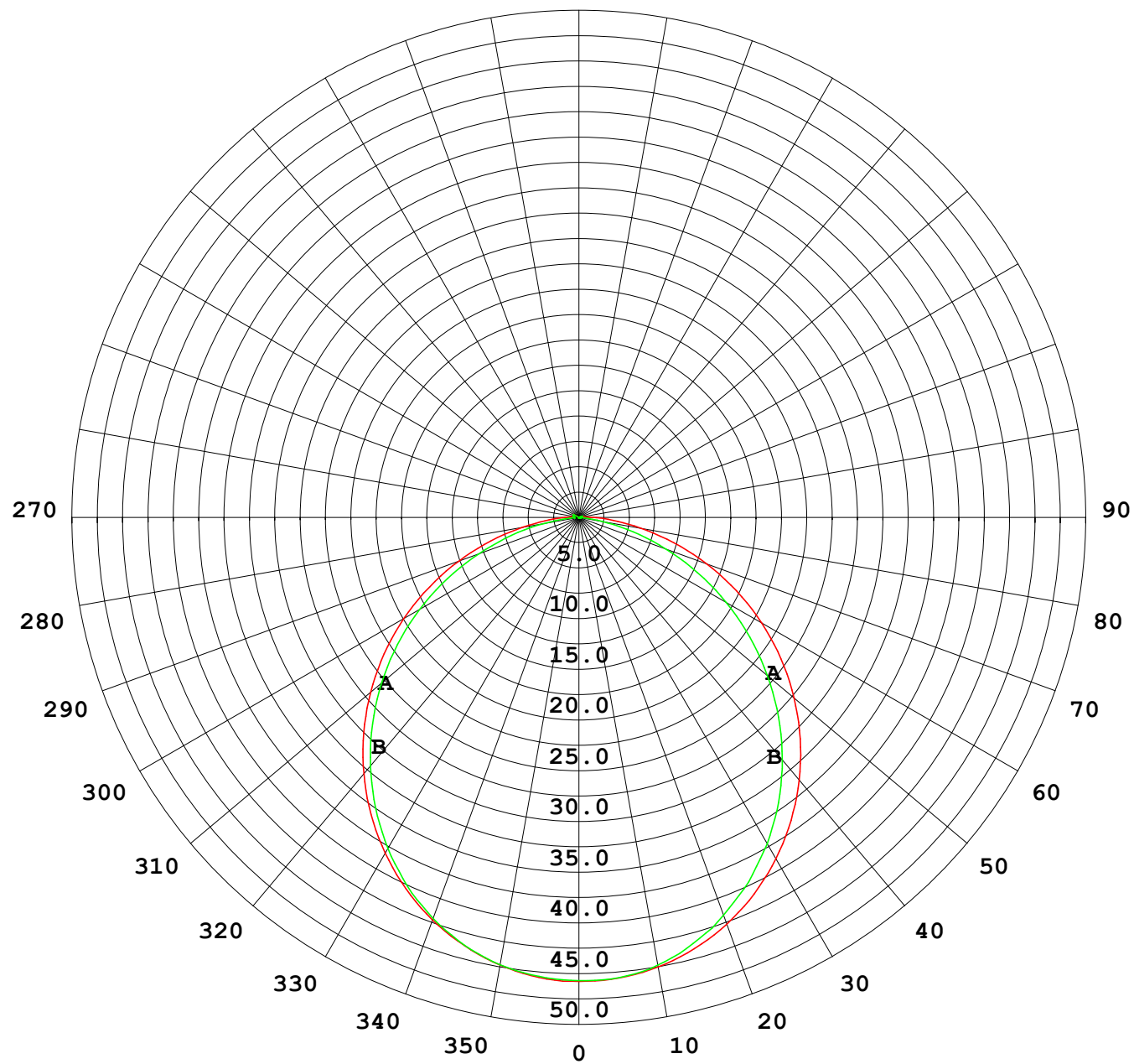
## Photometric Data Table [cd]

93.0	0.5551	0.8859
96.0	0.4742	0.5587
99.0	0.4372	0.4474
102.0	0.4221	0.4171
105.0	0.4021	0.4346
108.0	0.4527	0.4422
111.0	0.5067	0.4498
114.0	0.5187	0.4623
117.0	0.5125	0.4824
120.0	0.4573	0.5327

C Range: 0 - 360DEG  
C Interval: 30.0DEG  
Test Speed: HIGH  
Temperature: 25.3DEG  
Operators: LPC  
Test Date: 2021-12-23

γ Range: 0 - 120DEG  
γ Interval: 1.0DEG  
Test System: EVERFINE GO-2000B\_V1 SYSTEM V2.0.362  
Humidity: 65.0%  
Test Distance: 9.200m [K=1.0000]  
Remarks:

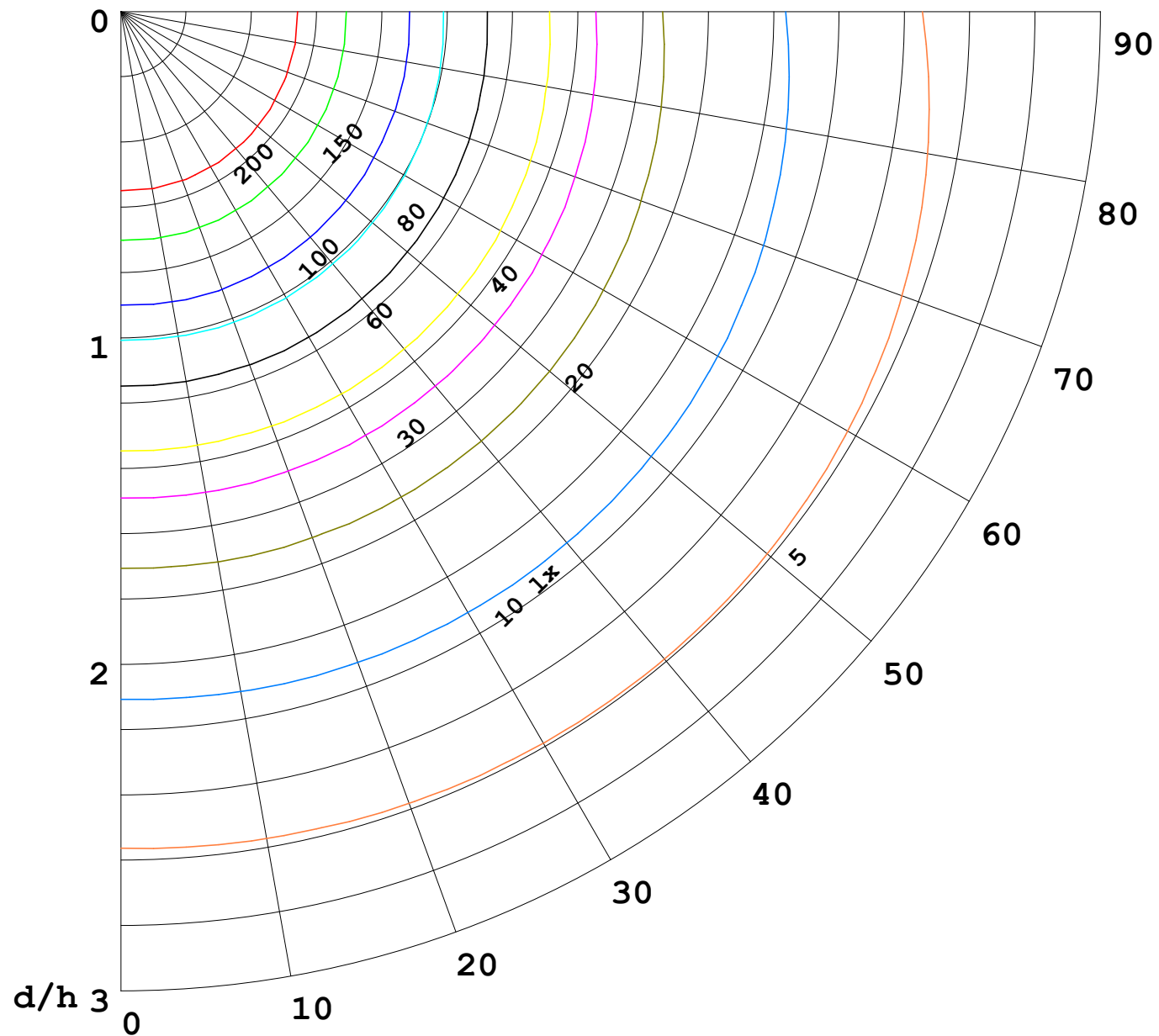
I (cd)





1000 lm

$\kappa = 1$



F = 5000 lm  
 K = 0.7  
 Hcc = 0.0 m  
 Hfc = 0.0 m  
 Eave = 100 lx

	Pcc	Pw	Pfc
—	70	50	30
—	50	30	20

