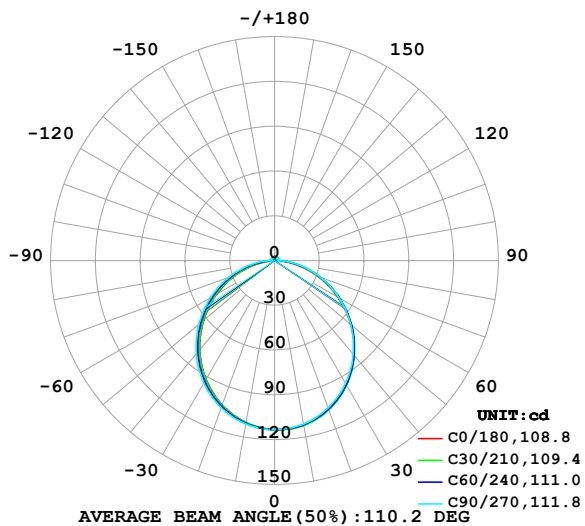


LUMINAIRE PHOTOMETRIC TEST REPORT

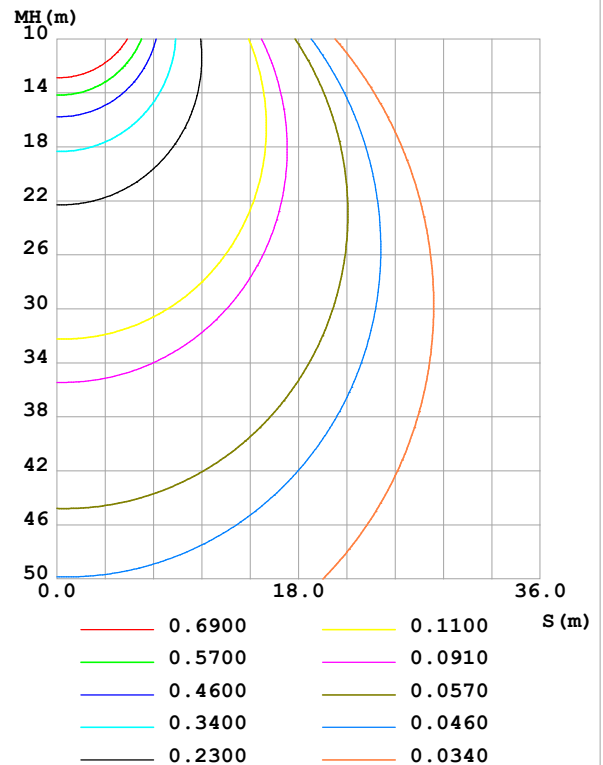
Test:U:24.00V I:0.7455A P:17.89W PF:1.000 Freq:0Hz Lamp Flux:332.529x1 lm		
NAME: SF15-24V-5050-60-RGBW-2200K-ALL	TYPE:	WEIGHT:
SPEC.:	DIM.: Length=1m	SERIAL No.:
MFR.: OLympia lighting	SUR.:	Shielding Angle:

DATA OF LAMP		PHOTOMETRIC DATA				Eff: 18.59 lm/W
MODEL	5050	I _{max} (cd)	113.4	S/MH(C0/180)	1.21	
NOMINAL POWER(W)	17	LOR(%)	100.0	S/MH(C90/270)	1.24	
RATED VOLTAGE(V)	24	TOTAL FLUX(lm)	332.53	η UP,DN(C0-180)	2.0,48.3	
NOMINAL FLUX(lm)	332.529	CIE CLASS	DIRECT	η UP,DN(C180-360)	2.0,47.7	
LAMPS INSIDE	1	η up (%)	4.0	CIBSE SHR NOM	1.25	
TEST VOLTAGE(V)		η down (%)	96.0	CIBSE SHR MAX	1.35	

LUMINOUS INTENSITY DISTRIBUTION DIAGRAM



C0 PLANE ISOLUX DIAGRAM (UNIT:lx)



C Range: 0 - 360DEG
C Interval: 30.0DEG
Test Speed: HIGH
Temperature: 25.3 °C
Operators:
Test Date: 2025-03-11

γ Range: 0 - 180DEG
γ Interval: 1.0DEG
Test System: EVERFINE GO-2000B_V1 SYSTEM V2.00.488
Humidity: 65.0%
Test Distance: 6.360m [K=1.0000]
Remarks:

ZONAL FLUX DIAGRAM

ZONAL FLUX DIAGRAM:

γ	C0	C45	C90	C135	C180	C225	C270	C315	γ	Φ zone	Φ total	%lum, lamp
10	112.1	111.9	111.2	110.4	110.2	110.4	111.2	111.9	0- 10	10.71	10.71	3.22,3.22
20	106.2	106.1	105.0	103.5	102.9	103.5	104.9	105.9	10- 20	30.60	41.31	12.4,12.4
30	96.22	96.21	95.02	92.88	91.95	92.88	94.83	95.97	20- 30	46.10	87.41	26.3,26.3
40	82.70	83.01	82.00	79.22	78.08	79.26	81.70	82.75	30- 40	55.12	142.5	42.9,42.9
50	66.56	67.24	66.64	63.39	62.09	63.47	66.30	66.99	40- 50	56.63	199.2	59.9,59.9
60	48.82	49.84	49.83	46.27	44.77	46.45	49.56	49.70	50- 60	50.80	250.0	75.2,75.2
70	30.58	31.91	32.57	28.85	26.93	29.10	32.45	31.93	60- 70	38.90	288.9	86.9,86.9
80	13.43	14.97	16.10	12.16	9.984	12.50	16.20	15.05	70- 80	23.20	312.1	93.8,93.8
90	1.239	1.680	2.424	1.731	1.119	1.851	2.542	1.657	80- 90	7.305	319.4	96,96
100	1.310	1.694	2.375	1.830	1.265	1.964	2.580	1.635	90-100	1.922	321.3	96.6,96.6
110	1.513	1.845	2.375	1.992	1.471	2.113	2.598	1.802	100-110	1.994	323.3	97.2,97.2
120	1.725	1.979	2.381	2.124	1.674	2.219	2.581	1.944	110-120	1.999	325.3	97.8,97.8
130	1.919	2.092	2.395	2.218	1.871	2.305	2.566	2.072	120-130	1.906	327.2	98.4,98.4
140	2.082	2.195	2.433	2.330	2.071	2.396	2.566	2.215	130-140	1.725	328.9	98.9,98.9
150	2.254	2.320	2.534	2.472	2.269	2.501	2.609	2.378	140-150	1.473	330.4	99.4,99.4
160	2.474	2.477	2.636	2.587	2.466	2.612	2.667	2.553	150-160	1.150	331.5	99.7,99.7
170	2.572	2.628	2.685	2.667	2.581	2.703	2.731	2.671	160-170	0.7389	332.3	99.9,99.9
180	2.649	2.732	2.760	2.742	2.661	2.733	2.751	2.744	170-180	0.2564	332.5	100,100
DEG	LUMINOUS INTENSITY:cd									UNIT:lm		

Conical surface Flux(90deg): 171.13 lm

%lum = 51.5%

%lamp = 51.5%

Conical surface Flux(130deg): 271.2 lm

%lum = 81.6%

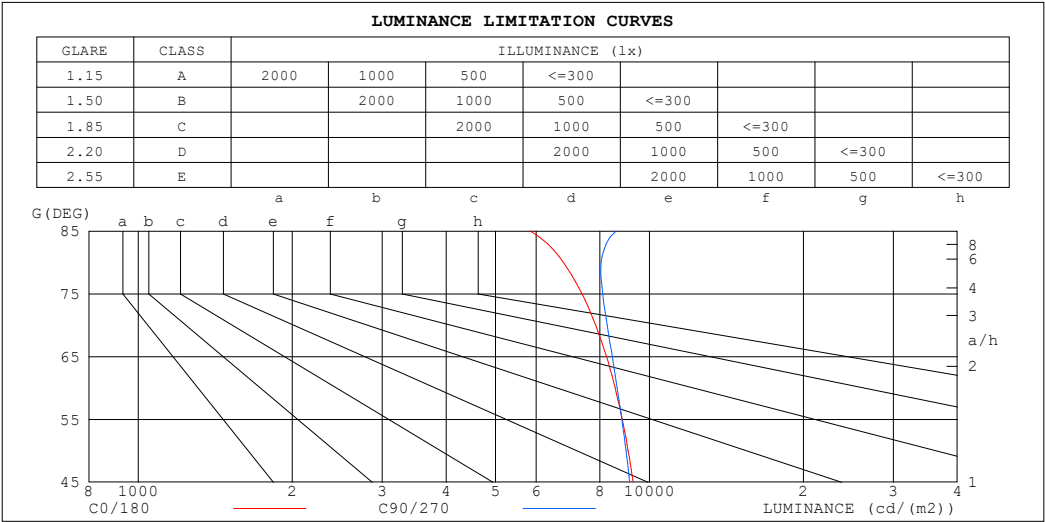
%lamp = 81.6%

C Range: 0 - 360DEG
 C Interval: 30.0DEG
 Test Speed: HIGH
 Temperature:25.3℃
 Operators:
 Test Date:2025-03-11

γ Range: 0 - 180DEG
 γ Interval: 1.0DEG
 Test System:EVERFINE GO-2000B_V1 SYSTEM V2.00.488
 Humidity:65.0%
 Test Distance:6.360m [K=1.0000]
 Remarks:

LUMINANCE LIMITATION CURVES

Test:U:24.00V I:0.7455A P:17.89W PF:1.000 Freq:0Hz Lamp Flux:332.529x1 lm		
NAME: SF15-24V-5050-60-RGBW-2200K-ALL	TYPE:	WEIGHT:
SPEC.:	DIM.: Length=1m	SERIAL No.:
MFR.: OLympia lighting	SUR.:	Shielding Angle:



LUMINANCE cd/(m2)		
G (DEG)	C0/180	C90/270
85	5849	8610
80	6784	8045
75	7378	8101
70	7844	8262
65	8236	8456
60	8566	8646
55	8845	8827
50	9083	8994
45	9289	9146

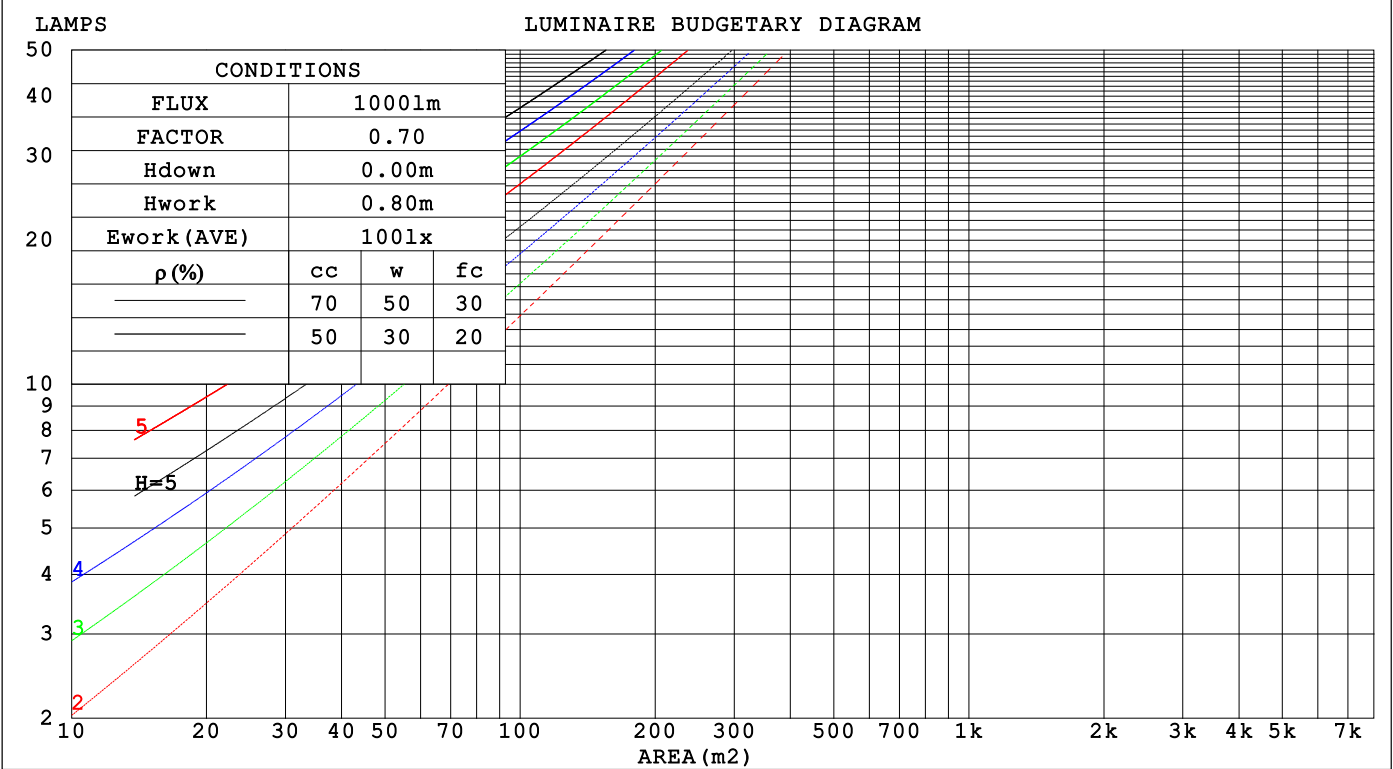
C Range: 0 - 360DEG
C Interval: 30.0DEG
Test Speed: HIGH
Temperature:25.3℃
Operators:
Test Date:2025-03-11

γ Range: 0 - 180DEG
γ Interval: 1.0DEG
Test System:EVERFINE GO-2000B_V1 SYSTEM V2.00.488
Humidity:65.0%
Test Distance:6.360m [K=1.0000]
Remarks:

CU AND LUMINAIRE BUDGETARY ESTIMATE DIAGRAM

Test:U:24.00V I:0.7455A P:17.89W PF:1.000 Freq:0Hz		
Lamp Flux:332.529x1 lm		
NAME: SF15-24V-5050-60-RGBW-2200K-ALL	TYPE:	WEIGHT:
SPEC.:	DIM.: Length=1m	SERIAL No.:
MFR.: OLYMPIA lighting	SUR.:	Shielding Angle:

pcc	80%			70%			50%			30%			10%			0
pw	50%	30%	10%	50%	30%	10%	50%	30%	10%	50%	30%	10%	50%	30%	10%	0
pfc	20%			20%			20%			20%			20%			0
RCR	RCR:Room Cavity Ratio															



C Range: 0 - 360DEG

C Interval: 30.0DEG

Test Speed: HIGH

Temperature:25.3℃

Operators:

Test Date:2025-03-11

γ Range: 0 - 180DEG

γ Interval: 1.0DEG

Test System:EVERFINE GO-2000B_V1 SYSTEM V2.00.488

Humidity:65.0%

Test Distance:6.360m [K=1.0000]

Remarks:

WEC AND CCEC

Test:U:24.00V I:0.7455A P:17.89W PF:1.000 Freq:0Hz Lamp Flux:332.529x1 lm		
NAME: SF15-24V-5050-60-RGBW-2200K-ALL	TYPE:	WEIGHT:
SPEC.:	DIM.: Length=1m	SERIAL No.:
MFR.: OLympia lighting	SUR.:	Shielding Angle:

pcc	80%			70%			50%			30%			10%			0														
pw	50%	30%	10%	50%	30%	10%	50%	30%	10%	50%	30%	10%	50%	30%	10%	0														
pfc	20%			20%			20%			20%			20%			0														
RCR	RCR:Room Cavity Ratio															Wall Exitance Coefficients(WEC)														
0.0																														
1.0	.312	.178	.056	.304	.173	.055	.288	.165	.053	.274	.158	.051	.261	.151	.049															
2.0	.292	.160	.049	.284	.157	.048	.271	.151	.047	.258	.145	.045	.246	.139	.044															
3.0	.269	.143	.043	.263	.141	.042	.250	.136	.041	.239	.131	.040	.229	.127	.039															
4.0	.248	.129	.038	.242	.127	.037	.231	.123	.037	.221	.119	.036	.212	.115	.035															
5.0	.229	.117	.034	.224	.115	.033	.214	.111	.033	.205	.108	.032	.196	.105	.032															
6.0	.212	.106	.030	.208	.105	.030	.199	.102	.030	.191	.099	.029	.183	.096	.029															
7.0	.198	.098	.028	.193	.096	.027	.185	.094	.027	.178	.091	.027	.171	.089	.026															
8.0	.185	.090	.025	.181	.089	.025	.174	.087	.025	.167	.085	.024	.160	.082	.024															
9.0	.173	.084	.023	.169	.083	.023	.163	.081	.023	.157	.079	.023	.151	.077	.022															
10.0	.163	.078	.022	.159	.077	.021	.154	.075	.021	.148	.073	.021	.143	.072	.021															

pcc	80%			70%			50%			30%			10%			0
pw	50%	30%	10%	50%	30%	10%	50%	30%	10%	50%	30%	10%	50%	30%	10%	0
pfc	20%			20%			20%			20%			20%			0
RCR	RCR:Room Cavity Ratio						Ceiling Cavity Exitance Coefficients (CCEC)									
0.0	.221	.221	.221	.189	.189	.189	.129	.129	.129	.074	.074	.074	.024	.024	.024	
1.0	.211	.187	.165	.180	.160	.142	.123	.110	.098	.071	.064	.057	.023	.021	.018	
2.0	.203	.163	.129	.174	.140	.111	.119	.097	.078	.069	.056	.045	.022	.018	.015	
3.0	.195	.145	.105	.167	.125	.091	.115	.087	.064	.066	.051	.038	.021	.016	.012	
4.0	.187	.132	.089	.161	.114	.078	.111	.079	.055	.064	.047	.032	.021	.015	.011	
5.0	.180	.122	.078	.155	.105	.068	.107	.073	.048	.062	.043	.029	.020	.014	.009	
6.0	.173	.113	.070	.149	.098	.061	.103	.069	.043	.059	.040	.026	.019	.013	.009	
7.0	.166	.106	.065	.143	.092	.056	.099	.065	.040	.057	.038	.024	.019	.012	.008	
8.0	.160	.101	.060	.137	.087	.052	.095	.061	.037	.055	.036	.022	.018	.012	.007	
9.0	.154	.096	.057	.132	.083	.049	.092	.058	.035	.053	.035	.021	.017	.011	.007	
10.0	.148	.092	.054	.128	.079	.047	.089	.056	.033	.052	.033	.020	.017	.011	.007	

C Range: 0 - 360DEG
C Interval: 30.0DEG
Test Speed: HIGH
Temperature:25.3℃
Operators:
Test Date:2025-03-11

γ Range: 0 - 180DEG
γ Interval: 1.0DEG
Test System:EVERFINE GO-2000B_V1 SYSTEM V2.00.488
Humidity:65.0%
Test Distance:6.360m [K=1.0000]
Remarks:

UGR(Unified Glare Rating) Table

Test:U:24.00V I:0.7455A P:17.89W PF:1.000 Freq:0Hz Lamp Flux:332.529x1 lm											
NAME: SF15-24V-5050-60-RGBW-2200K-ALL						TYPE:			WEIGHT:		
SPEC.:						DIM.: Length=1m			SERIAL No.:		
MFR.: OLympia lighting						SUR.:			Shielding Angle:		
ceiling/cavity	0.7	0.7	0.5	0.5	0.3	0.7	0.7	0.5	0.5	0.3	
walls	0.5	0.3	0.5	0.3	0.3	0.5	0.3	0.5	0.3	0.3	
working plane	0.2	0.2	0.2	0.2	0.2	0.2	0.2	0.2	0.2	0.2	
Room dimensions		Viewed crosswise					Viewed endwise				
x = 2H y = 2H	2H	22.8	24.2	23.1	24.5	24.8	22.8	24.3	23.1	24.5	24.8
	3H	24.3	25.6	24.6	25.9	26.2	24.4	25.7	24.7	26.0	26.4
	4H	24.9	26.2	25.3	26.5	26.8	25.1	26.4	25.5	26.7	27.0
	6H	25.3	26.6	25.7	26.9	27.3	25.7	26.9	26.0	27.2	27.6
	8H	25.5	26.7	25.9	27.0	27.4	25.9	27.0	26.3	27.4	27.8
	12H	25.6	26.7	26.0	27.1	27.5	26.1	27.2	26.5	27.5	27.9
4H	2H	23.4	24.7	23.7	25.0	25.3	23.4	24.7	23.8	25.0	25.3
	3H	25.1	26.2	25.5	26.6	26.9	25.2	26.3	25.6	26.7	27.1
	4H	25.8	26.8	26.3	27.2	27.7	26.0	27.1	26.5	27.4	27.9
	6H	26.4	27.3	26.9	27.7	28.2	26.7	27.6	27.2	28.1	28.5
	8H	26.6	27.5	27.1	27.9	28.4	27.0	27.9	27.5	28.3	28.8
	12H	26.8	27.5	27.2	28.0	28.5	27.3	28.1	27.8	28.5	29.0
8H	4H	26.1	27.0	26.6	27.4	27.9	26.3	27.2	26.8	27.6	28.1
	6H	26.9	27.6	27.4	28.1	28.6	27.2	27.9	27.7	28.4	28.9
	8H	27.2	27.8	27.7	28.3	28.8	27.6	28.2	28.1	28.7	29.3
	12H	27.4	28.0	28.0	28.5	29.0	28.0	28.5	28.5	29.0	29.6
12H	4H	26.2	26.9	26.6	27.4	27.9	26.3	27.1	26.8	27.6	28.0
	6H	27.0	27.6	27.5	28.1	28.6	27.3	27.9	27.8	28.4	28.9
	8H	27.3	27.9	27.9	28.4	28.9	27.7	28.3	28.3	28.8	29.3
Variations with the observer position at spacings(CIE Pub.117):											
S = 1.0H		+ 0.1 / - 0.2					+ 0.1 / - 0.2				
1.5H		+ 0.2 / - 0.3					+ 0.2 / - 0.3				
2.0H		+ 0.1 / - 0.3					+ 0.1 / - 0.3				

CIE Pub.117, 332.5 lm Total Lamp Luminous Flux Correct (8log(F/F0) = -3.8)
Area: 0.0115 m2

C Range: 0 - 360DEG
C Interval: 30.0DEG
Test Speed: HIGH
Temperature:25.3℃
Operators:
Test Date:2025-03-11

γ Range: 0 - 180DEG
γ Interval: 1.0DEG
Test System:EVERFINE GO-2000B_V1 SYSTEM V2.00.488
Humidity:65.0%
Test Distance:6.360m [K=1.0000]
Remarks:

UTILIZATION FACTORS TABLE

Test:U:24.00V I:0.7455A P:17.89W PF:1.000 Freq:0Hz Lamp Flux:332.529x1 lm		
NAME: SF15-24V-5050-60-RGBW-2200K-ALL	TYPE:	WEIGHT:
SPEC.:	DIM.: Length=1m	SERIAL No.:
MFR.: OLympia lighting	SUR.:	Shielding Angle:

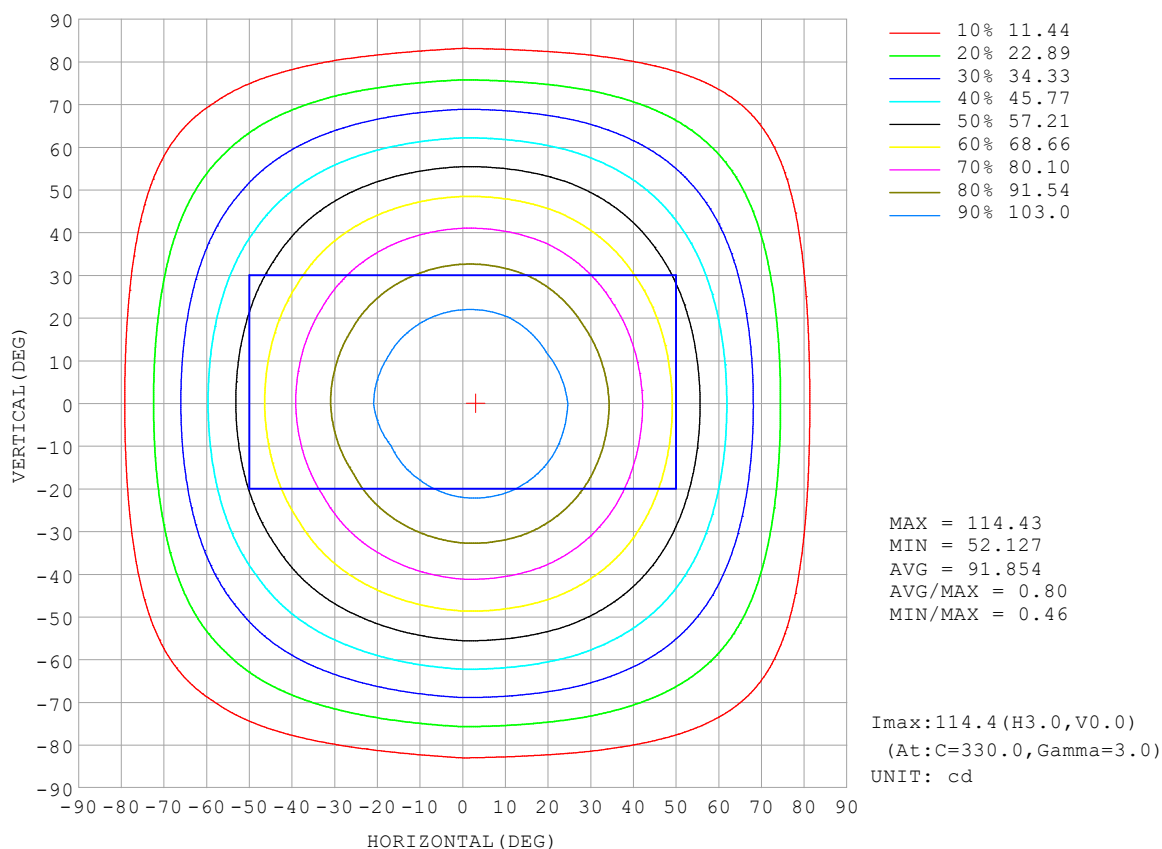
REFLECTANCE										
Ceiling	0.8	0.8	0.8	0.7	0.7	0.7	0.5	0.5	0.5	0
Walls	0.7	0.5	0.3	0.7	0.5	0.3	0.7	0.5	0.3	0
Working plane	0.2	0.2	0.2	0.2	0.2	0.2	0.2	0.2	0.2	0
ROOM INDEX	UTILIZATION FACTORS (PERCENT) $k(RI) \times RCR = 5$									
$k = 0.60$	56	45	38	56	45	38	54	44	37	31
0.80	66	55	47	65	54	47	63	53	47	39
1.00	75	63	56	73	63	56	71	64	55	48
1.25	82	71	64	80	70	63	77	68	62	54
1.50	87	77	70	85	76	69	81	73	67	59
2.00	94	85	78	91	83	77	87	81	75	67
2.50	97	90	83	95	88	82	91	85	80	71
3.00	101	94	88	98	92	87	94	89	84	75
4.00	105	99	94	102	97	93	97	93	89	79
5.00	107	102	98	105	100	96	99	96	93	82
ROOM INDEX	UF (total)									Direct
According to DIN EN 13032-2 2004			Suspended					SHRNOM = 1.25		

C Range: 0 - 360DEG
 C Interval: 30.0DEG
 Test Speed: HIGH
 Temperature: 25.3°C
 Operators:
 Test Date: 2025-03-11

γ Range: 0 - 180DEG
 γ Interval: 1.0DEG
 Test System: EVERFINE GO-2000B_V1 SYSTEM V2.00.488
 Humidity: 65.0%
 Test Distance: 6.360m [K=1.0000]
 Remarks:

ISOCANDELA DIAGRAM

Test:U:24.00V I:0.7455A P:17.89W PF:1.000 Freq:0Hz Lamp Flux:332.529x1 lm		
NAME: SF15-24V-5050-60-RGBW-2200K-ALL	TYPE:	WEIGHT:
SPEC.:	DIM.: Length=1m	SERIAL No.:
MFR.: OLympia lighting	SUR.:	Shielding Angle:

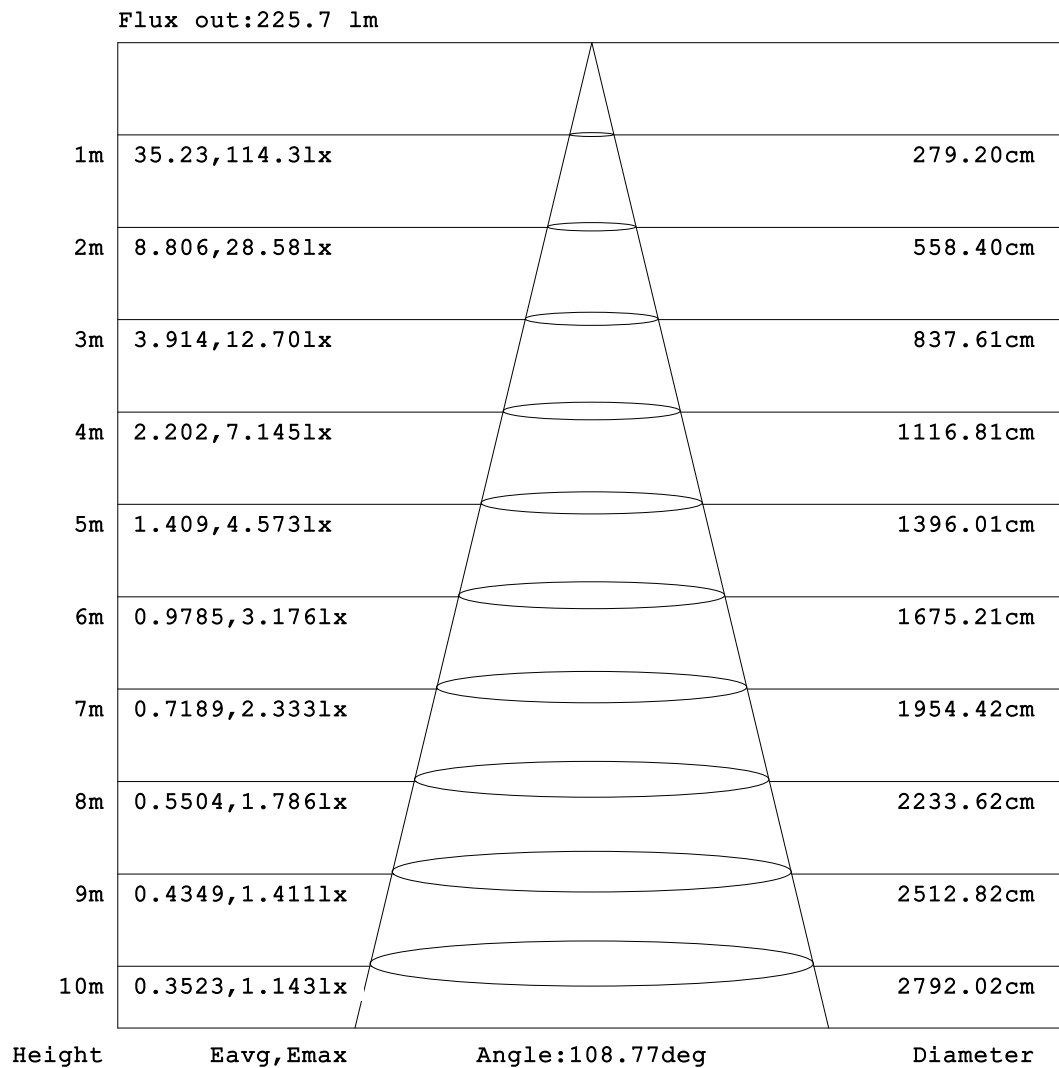


C Range: 0 - 360DEG
C Interval: 30.0DEG
Test Speed: HIGH
Temperature:25.3℃
Operators:
Test Date:2025-03-11

γ Range: 0 - 180DEG
γ Interval: 1.0DEG
Test System:EVERFINE GO-2000B_V1 SYSTEM V2.00.488
Humidity:65.0%
Test Distance:6.360m [K=1.0000]
Remarks:

AAI Figure

Test:U:24.00V I:0.7455A P:17.89W PF:1.000 Freq:0Hz Lamp Flux:332.529x1 lm		
NAME: SF15-24V-5050-60-RGBW-2200K-ALL	TYPE:	WEIGHT:
SPEC.:	DIM.: Length=1m	SERIAL No.:
MFR.: OLympia lighting	SUR.:	Shielding Angle:



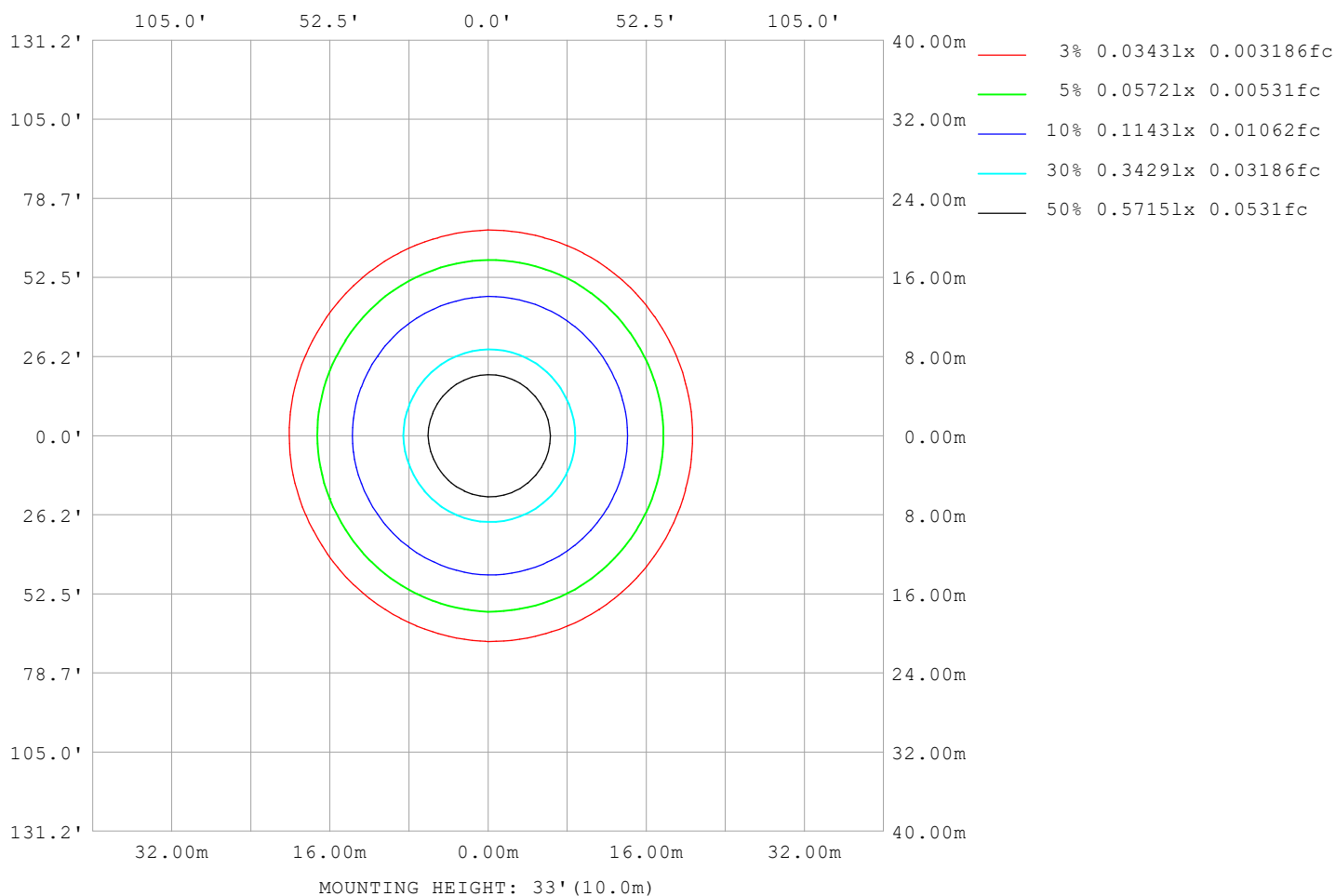
Note:The Curves indicate the illuminated area and the average illumination when the luminaire is at different distance.

C Range: 0 - 360DEG
C Interval: 30.0DEG
Test Speed: HIGH
Temperature:25.3℃
Operators:
Test Date:2025-03-11

γ Range: 0 - 180DEG
γ Interval: 1.0DEG
Test System:EVERFINE GO-2000B_V1 SYSTEM V2.00.488
Humidity:65.0%
Test Distance:6.360m [K=1.0000]
Remarks:

ISOLUX DIAGRAM

Test:U:24.00V I:0.7455A P:17.89W PF:1.000 Freq:0Hz Lamp Flux:332.529x1 lm		
NAME: SF15-24V-5050-60-RGBW-2200K-ALL	TYPE:	WEIGHT:
SPEC.:	DIM.: Length=1m	SERIAL No.:
MFR.: OLympia lighting	SUR.:	Shielding Angle:



C Range: 0 - 360DEG
C Interval: 30.0DEG
Test Speed: HIGH
Temperature:25.3°C
Operators:
Test Date:2025-03-11

γ Range: 0 - 180DEG
γ Interval: 1.0DEG
Test System:EVERFINE GO-2000B_V1 SYSTEM V2.00.488
Humidity:65.0%
Test Distance:6.360m [K=1.0000]
Remarks:

LED Avg.L Report

Test:U:24.00V I:0.7455A P:17.89W PF:1.000 Freq:0Hz Lamp Flux:332.529x1 lm		
NAME: SF15-24V-5050-60-RGBW-2200K-ALL	TYPE:	WEIGHT:
SPEC.:	DIM.: Length=1m	SERIAL No.:
MFR.: OLympia lighting	SUR.:	Shielding Angle:

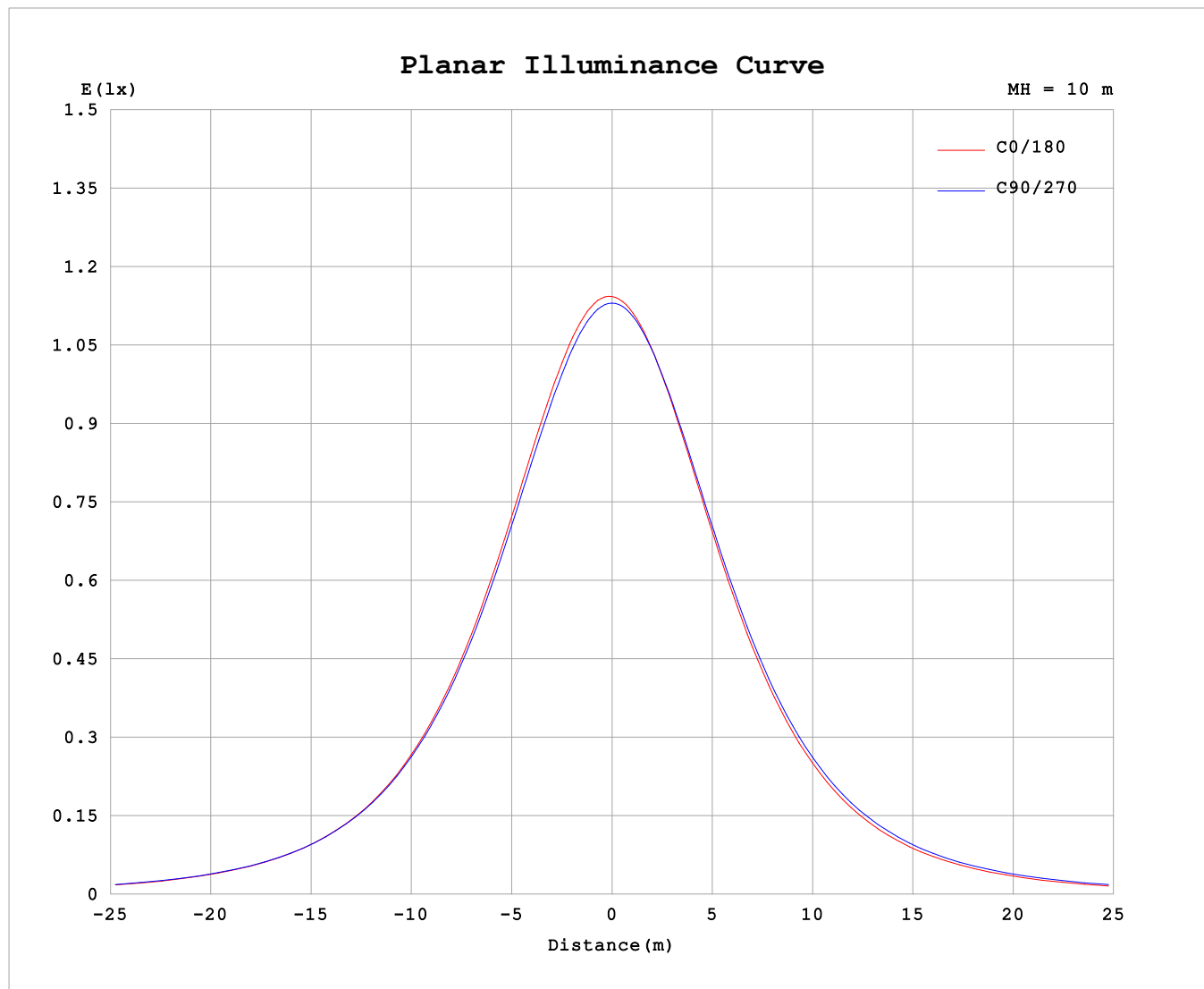
AvgL	cd/m2
L_0~180 (65) av	7772
L_0~180 (75) av	6722
L_0~180 (85) av	4489
L_90~270 (65) av	8455
L_90~270 (75) av	8114
L_90~270 (85) av	8691
L_45 (65) av	8069
L_45 (75) av	7341
L_45 (85) av	6039

Standard: GB/T 29293-2012

C Range: 0 - 360DEG
C Interval: 30.0DEG
Test Speed: HIGH
Temperature:25.3℃
Operators:
Test Date:2025-03-11

γ Range: 0 - 180DEG
γ Interval: 1.0DEG
Test System:EVERFINE GO-2000B_V1 SYSTEM V2.00.488
Humidity:65.0%
Test Distance:6.360m [K=1.0000]
Remarks:

Planar Illuminance Curve



C Range: 0 - 360DEG
C Interval: 30.0DEG
Test Speed: HIGH
Temperature: 25.3 °C
Operators:
Test Date: 2025-03-11

γ Range: 0 - 180DEG
 γ Interval: 1.0DEG
Test System: EVERFINE GO-2000B_V1 SYSTEM V2.00.488
Humidity: 65.0%
Test Distance: 6.360m [K=1.0000]
Remarks:

LUMINOUS DISTRIBUTION INTENSITY DATA

Test:U:24.00V I:0.7455A P:17.89W PF:1.000 Freq:0Hz Lamp Flux:332.529x1 lm		
NAME: SF15-24V-5050-60-RGBW-2200K-ALL	TYPE:	WEIGHT:
SPEC.:	DIM.: Length=1m	SERIAL No.:
MFR.: OLYMPIA lighting	SUR.:	Shielding Angle:

Table--1

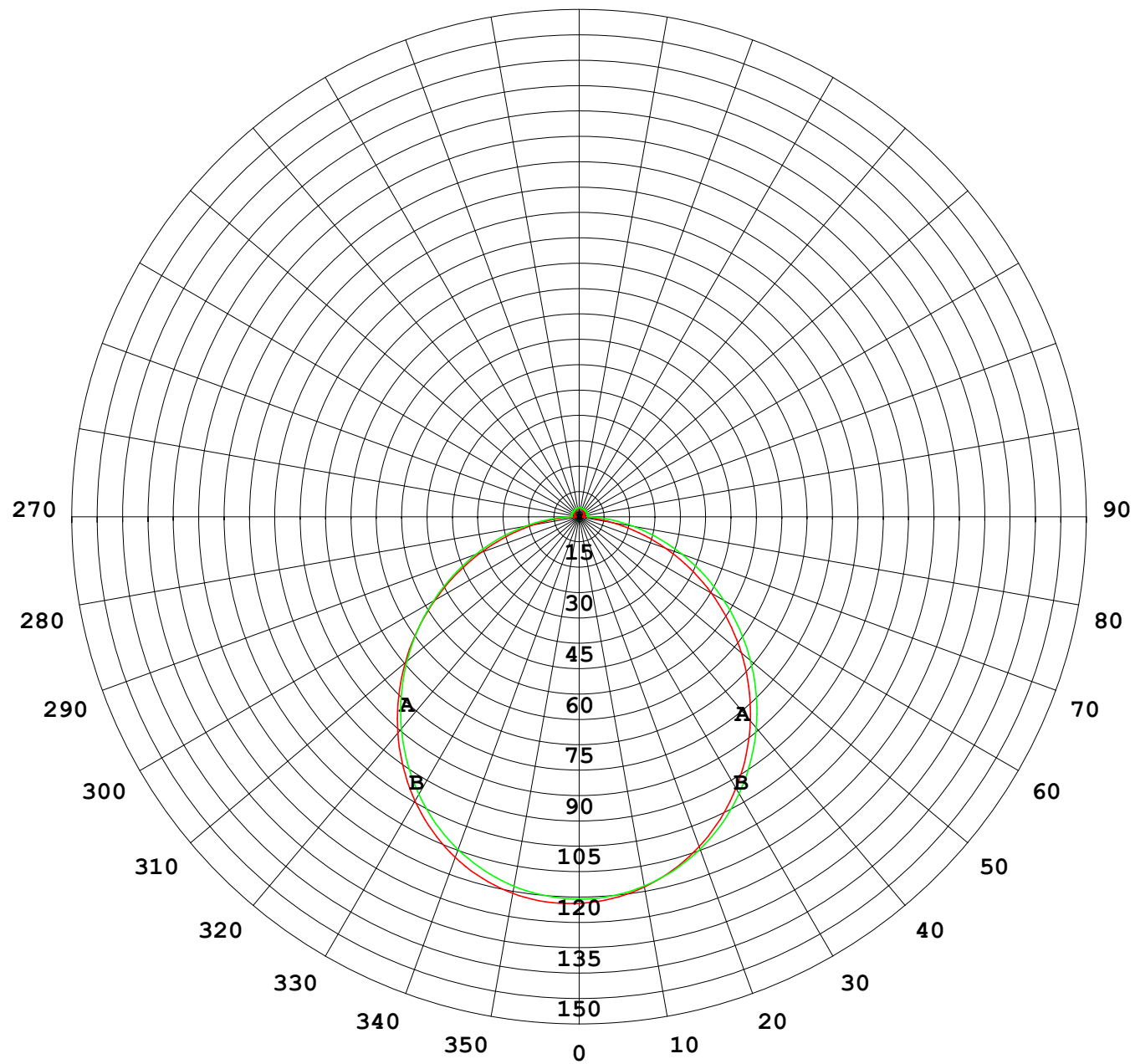
UNIT: cd

C (DEG) γ (DEG)	0	30	60	90	120	150	180	210	240	270	300	330							
0	113	113	113	113	113	113	113	113	113	113	113	113							
5	113	113	113	113	112	112	112	112	113	113	113	113							
10	112	112	112	111	111	110	110	110	111	111	112	112							
15	110	110	109	109	108	107	107	107	108	109	109	110							
20	106	106	106	105	104	103	103	103	104	105	106	106							
25	102	102	101	100	99.1	98.1	97.9	98.1	99.2	100	101	102							
30	96.2	96.4	96.0	95.0	93.5	92.3	91.9	92.3	93.5	94.8	95.9	96.1							
35	89.9	90.1	89.9	88.8	87.1	85.7	85.3	85.7	87.1	88.6	89.7	89.8							
40	82.7	83.0	83.0	82.0	80.0	78.5	78.1	78.4	80.1	81.7	82.7	82.7							
45	74.9	75.3	75.4	74.6	72.3	70.7	70.3	70.7	72.5	74.2	75.2	75.0							
50	66.6	67.1	67.4	66.6	64.3	62.5	62.1	62.5	64.5	66.3	67.2	66.8							
55	57.8	58.4	59.0	58.4	55.9	54.0	53.5	54.0	56.1	58.0	58.8	58.2							
60	48.8	49.4	50.3	49.8	47.3	45.2	44.8	45.3	47.5	49.6	50.0	49.3							
65	39.7	40.3	41.4	41.2	38.6	36.5	35.9	36.6	38.9	41.0	41.2	40.3							
70	30.6	31.3	32.5	32.6	30.0	27.7	26.9	27.8	30.4	32.5	32.5	31.4							
75	21.8	22.6	23.8	24.2	21.6	19.1	18.2	19.2	22.0	24.1	23.9	22.7							
80	13.4	14.3	15.6	16.1	13.5	10.8	9.98	11.1	13.9	16.2	15.7	14.4							
85	5.81	6.66	7.87	8.65	5.75	3.74	3.19	3.92	6.21	8.77	8.00	6.76							
90	1.24	1.41	1.95	2.42	2.01	1.46	1.12	1.56	2.14	2.54	1.93	1.39							
95	1.22	1.40	1.88	2.38	1.99	1.51	1.18	1.58	2.18	2.53	1.86	1.31							
100	1.31	1.47	1.91	2.38	2.06	1.60	1.26	1.66	2.27	2.58	1.92	1.35							
105	1.41	1.56	1.98	2.38	2.13	1.70	1.36	1.75	2.33	2.60	2.01	1.44							
110	1.51	1.66	2.03	2.38	2.19	1.79	1.47	1.85	2.38	2.60	2.08	1.52							
115	1.62	1.75	2.08	2.38	2.24	1.88	1.57	1.92	2.42	2.59	2.13	1.61							
120	1.72	1.84	2.12	2.38	2.29	1.96	1.67	2.00	2.44	2.58	2.19	1.70							
125	1.83	1.92	2.15	2.39	2.31	2.03	1.77	2.07	2.45	2.57	2.22	1.79							
130	1.92	2.00	2.19	2.40	2.34	2.09	1.87	2.14	2.47	2.57	2.27	1.87							
135	2.00	2.07	2.22	2.41	2.37	2.18	1.97	2.21	2.49	2.57	2.32	1.95							
140	2.08	2.14	2.25	2.43	2.40	2.26	2.07	2.28	2.52	2.57	2.39	2.04							
145	2.16	2.21	2.30	2.47	2.45	2.34	2.17	2.34	2.55	2.58	2.46	2.13							
150	2.25	2.27	2.37	2.53	2.52	2.43	2.27	2.41	2.59	2.61	2.53	2.22							
155	2.36	2.36	2.44	2.59	2.57	2.49	2.37	2.48	2.63	2.64	2.60	2.35							
160	2.47	2.44	2.51	2.64	2.62	2.56	2.47	2.55	2.68	2.67	2.64	2.47							
165	2.56	2.52	2.56	2.66	2.64	2.61	2.56	2.61	2.72	2.70	2.68	2.54							
170	2.57	2.64	2.62	2.68	2.66	2.68	2.58	2.66	2.74	2.73	2.71	2.63							
175	2.62	2.69	2.67	2.73	2.70	2.73	2.64	2.70	2.75	2.75	2.75	2.68							
180	2.65	2.73	2.74	2.76	2.74	2.74	2.66	2.72	2.75	2.75	2.76	2.73							

C Range: 0 - 360DEG
C Interval: 30.0DEG
Test Speed: HIGH
Temperature:25.3℃
Operators:
Test Date:2025-03-11

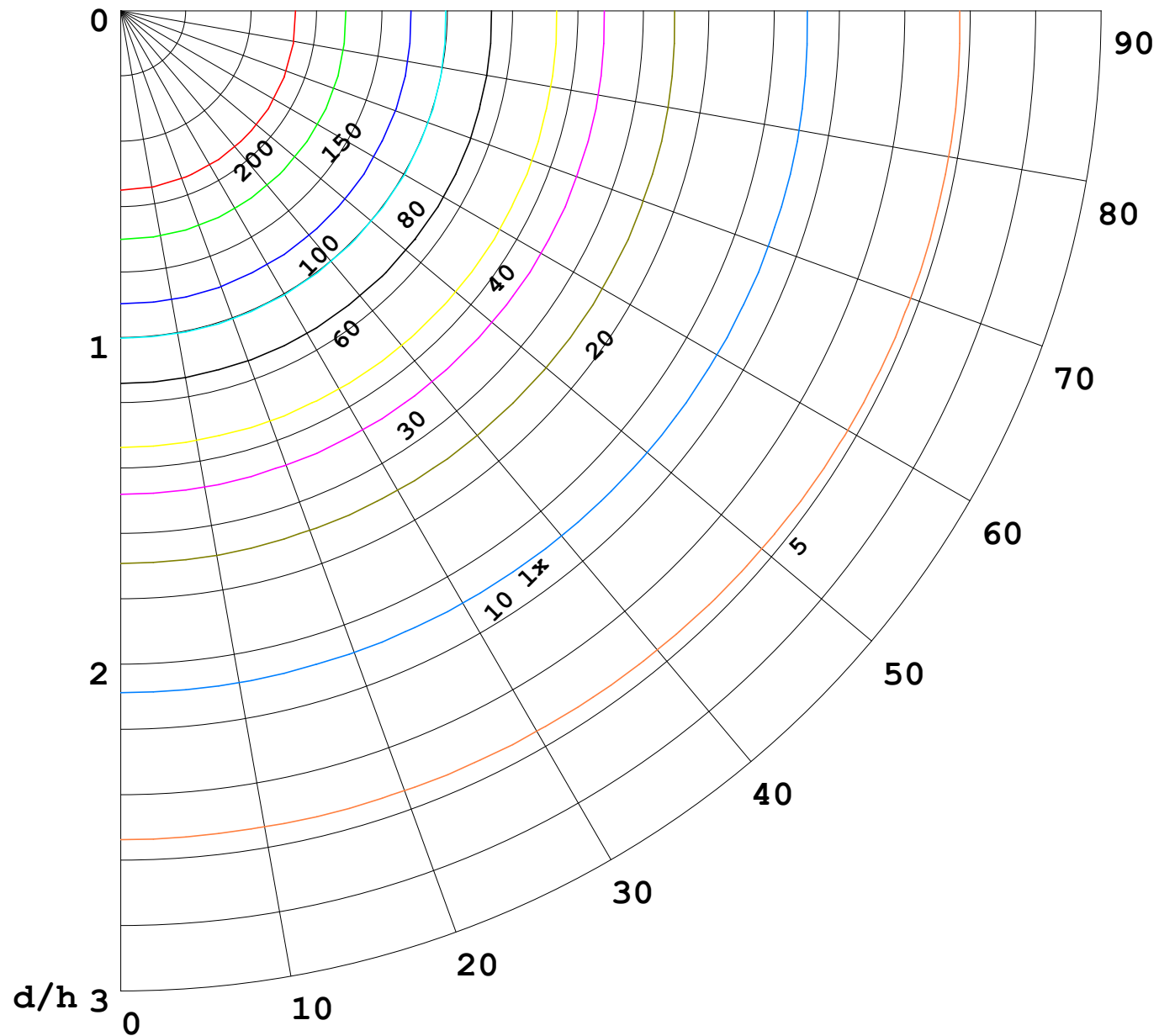
γ Range: 0 - 180DEG
γ Interval: 1.0DEG
Test System:EVERFINE GO-2000B_V1 SYSTEM V2.00.488
Humidity:65.0%
Test Distance:6.360m [K=1.0000]
Remarks:

I (cd)



1000 lm

$\kappa = 1$



F = 1000 lm
 K = 0.7
 Hcc = 0.8 m
 Hfc = 0.0 m
 Eave = 100 lx

	Pcc	Pw	Pfc
————	70	50	30
————	50	30	20

