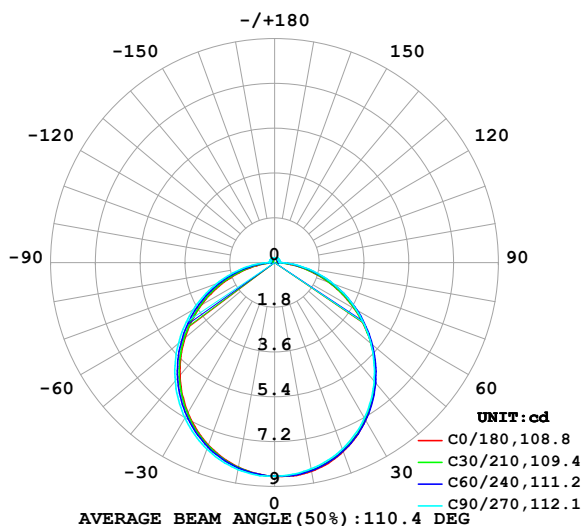


## LUMINAIRE PHOTOMETRIC TEST REPORT

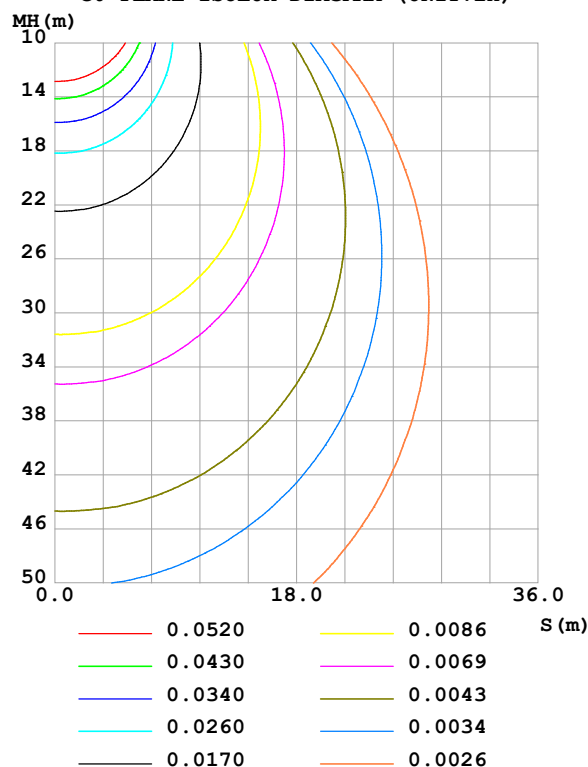
Test:U:24.00V I:0.1657A P:3.977W PF:1.000 Freq:0Hz Lamp Flux:25.2995x1 lm		
NAME: SF15-24V-5050-60-RGBW-2200K-B	TYPE:	WEIGHT:
SPEC.:	DIM.: Length=1m	SERIAL No.:
MFR.: OLympia lighting	SUR.:	Shielding Angle:

DATA OF LAMP		PHOTOMETRIC DATA				Eff: 6.36 lm/W
MODEL	5050	I <sub>max</sub> (cd)	8.599	S/MH(C0/180)	1.21	
NOMINAL POWER(W)		LOR(%)	100.0	S/MH(C90/270)	1.25	
RATED VOLTAGE(V)	24	TOTAL FLUX(lm)	25.309	η UP,DN(C0-180)	2.1,48.2	
NOMINAL FLUX(lm)	25.2995	CIE CLASS	DIRECT	η UP,DN(C180-360)	2.1,47.7	
LAMPS INSIDE	1	η up (%)	4.1	CIBSE SHR NOM	1.25	
TEST VOLTAGE(V)		η down (%)	95.9	CIBSE SHR MAX	1.35	

LUMINOUS INTENSITY DISTRIBUTION DIAGRAM



C0 PLANE ISOLUX DIAGRAM (UNIT:lx)



C Range: 0 - 360DEG  
C Interval: 30.0DEG  
Test Speed: HIGH  
Temperature:25.3℃  
Operators:  
Test Date:2025-03-11

γ Range: 0 - 180DEG  
γ Interval: 1.0DEG  
Test System:EVERFINE GO-2000B\_V1 SYSTEM V2.00.488  
Humidity:65.0%  
Test Distance:6.360m [K=1.0000]  
Remarks:

## ZONAL FLUX DIAGRAM

## ZONAL FLUX DIAGRAM:

$\gamma$	C0	C45	C90	C135	C180	C225	C270	C315	$\gamma$	$\Phi$ zone	$\Phi$ total	%lum, lamp
10	8.521	8.488	8.420	8.373	8.350	8.377	8.452	8.491	0- 10	0.8124	0.8124	3.21,3.21
20	8.080	8.049	7.975	7.856	7.801	7.854	7.973	8.045	10- 20	2.322	3.135	12.4,12.4
30	7.312	7.303	7.224	7.053	6.975	7.051	7.211	7.295	20- 30	3.501	6.636	26.2,26.2
40	6.287	6.302	6.227	6.013	5.918	6.020	6.221	6.288	30- 40	4.187	10.82	42.8,42.8
50	5.058	5.097	5.058	4.808	4.711	4.820	5.051	5.091	40- 50	4.300	15.12	59.7,59.8
60	3.709	3.781	3.799	3.507	3.394	3.531	3.781	3.773	50- 60	3.856	18.98	75,75
70	2.320	2.420	2.517	2.187	2.031	2.209	2.476	2.422	60- 70	2.955	21.93	86.7,86.7
80	1.018	1.136	1.275	0.9176	0.7408	0.9479	1.248	1.135	70- 80	1.765	23.70	93.6,93.7
90	0.1069	0.1658	0.2194	0.1469	0.0953	0.1557	0.2258	0.1691	80- 90	0.5626	24.26	95.9,95.9
100	0.1040	0.1447	0.1963	0.1522	0.1069	0.1585	0.2144	0.1397	90-100	0.1671	24.43	96.5,96.6
110	0.1068	0.1507	0.1963	0.1560	0.1218	0.1632	0.2114	0.1424	100-110	0.1614	24.59	97.2,97.2
120	0.1217	0.1573	0.1963	0.1638	0.1386	0.1721	0.2083	0.1516	110-120	0.1572	24.75	97.8,97.8
130	0.1371	0.1649	0.1963	0.1702	0.1473	0.1777	0.2069	0.1609	120-130	0.1490	24.90	98.4,98.4
140	0.1473	0.1753	0.2043	0.1809	0.1667	0.1851	0.2054	0.1719	130-140	0.1350	25.03	98.9,98.9
150	0.1588	0.1890	0.2063	0.1913	0.1848	0.1905	0.2050	0.1819	140-150	0.1151	25.15	99.4,99.4
160	0.1790	0.1996	0.2077	0.1947	0.1911	0.1927	0.2050	0.1910	150-160	0.0888	25.23	99.7,99.7
170	0.1923	0.2012	0.2032	0.1965	0.1925	0.1964	0.2050	0.1993	160-170	0.0557	25.29	99.9,100
180	0.1935	0.2020	0.2021	0.1991	0.1935	0.2006	0.2050	0.2020	170-180	0.0190	25.31	100,100
DEG	LUMINOUS INTENSITY:cd									UNIT:lm		

Conical surface Flux(90deg): 12.994 lm

%lum = 51.3%

%lamp = 51.4%

Conical surface Flux(130deg): 20.592 lm

%lum = 81.4%

%lamp = 81.4%

C Range: 0 - 360DEG  
 C Interval: 30.0DEG  
 Test Speed: HIGH  
 Temperature:25.3℃  
 Operators:  
 Test Date:2025-03-11

$\gamma$  Range: 0 - 180DEG  
 $\gamma$  Interval: 1.0DEG  
 Test System:EVERFINE GO-2000B\_V1 SYSTEM V2.00.488  
 Humidity:65.0%  
 Test Distance:6.360m [K=1.0000]  
 Remarks:

LUMINANCE LIMITATION CURVES

Test:U:24.00V I:0.1657A P:3.977W PF:1.000 Freq:0Hz Lamp Flux:25.2995x1 lm		
NAME: SF15-24V-5050-60-RGBW-2200K-B	TYPE:	WEIGHT:
SPEC.:	DIM.: Length=1m	SERIAL No.:
MFR.: OLympia lighting	SUR.:	Shielding Angle:



LUMINANCE cd/(m2)		
G (DEG)	C0/180	C90/270
85	433	704
80	509	638
75	554	636
70	590	640
65	621	648
60	645	660
55	665	672
50	684	684
45	699	695

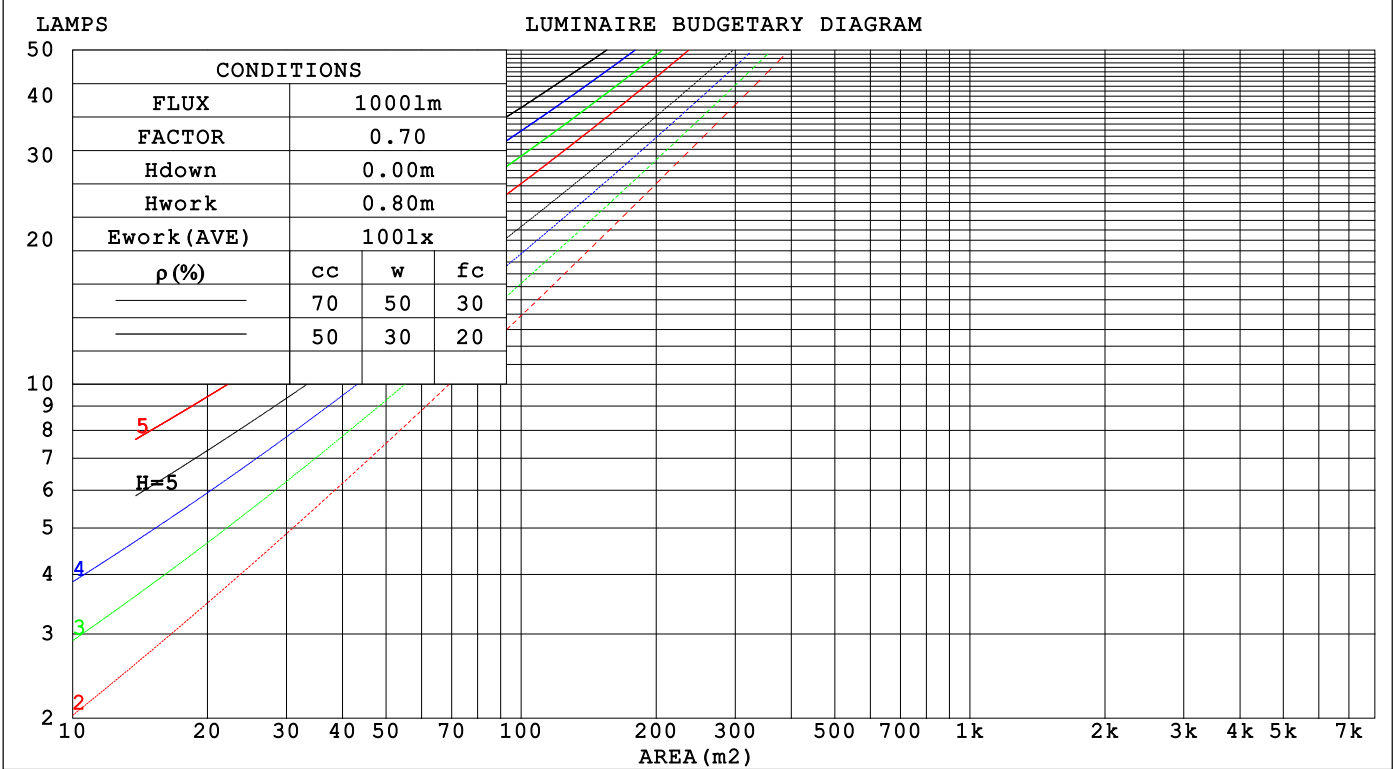
C Range: 0 - 360DEG  
C Interval: 30.0DEG  
Test Speed: HIGH  
Temperature:25.3℃  
Operators:  
Test Date:2025-03-11

γ Range: 0 - 180DEG  
γ Interval: 1.0DEG  
Test System:EVERFINE GO-2000B\_V1 SYSTEM V2.00.488  
Humidity:65.0%  
Test Distance:6.360m [K=1.0000]  
Remarks:

CU AND LUMINAIRE BUDGETARY ESTIMATE DIAGRAM

Test:U:24.00V I:0.1657A P:3.977W PF:1.000 Freq:0Hz		
Lamp Flux:25.2995x1 lm		
NAME: SF15-24V-5050-60-RGBW-2200K-B	TYPE:	WEIGHT:
SPEC.:	DIM.: Length=1m	SERIAL No.:
MFR.: OLYMPIA lighting	SUR.:	Shielding Angle:

pcc	80%			70%			50%			30%			10%			0
p <sub>w</sub>	50%	30%	10%	50%	30%	10%	50%	30%	10%	50%	30%	10%	50%	30%	10%	0
p <sub>fc</sub>	20%			20%			20%			20%			20%			0
RCR	RCR:Room Cavity Ratio															



C Range: 0 - 360DEG  
C Interval: 30.0DEG  
Test Speed: HIGH  
Temperature:25.3℃  
Operators:  
Test Date:2025-03-11

γ Range: 0 - 180DEG  
γ Interval: 1.0DEG  
Test System:EVERFINE GO-2000B\_V1 SYSTEM V2.00.488  
Humidity:65.0%  
Test Distance:6.360m [K=1.0000]  
Remarks:

## WEC AND CCEC

Test:U:24.00V I:0.1657A P:3.977W PF:1.000 Freq:0Hz Lamp Flux:25.2995x1 lm		
NAME: SF15-24V-5050-60-RGBW-2200K-B	TYPE:	WEIGHT:
SPEC.:	DIM.: Length=1m	SERIAL No.:
MFR.: OLympia lighting	SUR.:	Shielding Angle:

pcc	80%			70%			50%			30%			10%			0														
pw	50%	30%	10%	50%	30%	10%	50%	30%	10%	50%	30%	10%	50%	30%	10%	0														
pfc	20%			20%			20%			20%			20%			0														
RCR	RCR:Room Cavity Ratio															Wall Exitance Coefficients(WEC)														
0.0																														
1.0	.313	.178	.056	.304	.174	.055	.289	.166	.053	.274	.158	.051	.261	.151	.049															
2.0	.292	.160	.049	.285	.157	.048	.271	.151	.047	.258	.145	.045	.246	.139	.044															
3.0	.269	.143	.043	.263	.141	.042	.250	.136	.041	.239	.131	.040	.228	.126	.039															
4.0	.248	.129	.038	.242	.127	.037	.231	.123	.037	.221	.119	.036	.211	.115	.035															
5.0	.229	.117	.034	.224	.115	.033	.214	.111	.033	.205	.108	.032	.196	.105	.032															
6.0	.212	.106	.030	.208	.105	.030	.199	.102	.030	.191	.099	.029	.183	.096	.029															
7.0	.198	.098	.028	.193	.096	.027	.185	.094	.027	.178	.091	.027	.171	.089	.026															
8.0	.185	.090	.025	.181	.089	.025	.173	.087	.025	.167	.084	.024	.160	.082	.024															
9.0	.173	.084	.023	.169	.083	.023	.163	.081	.023	.157	.079	.022	.151	.077	.022															
10.0	.163	.078	.022	.159	.077	.021	.153	.075	.021	.148	.073	.021	.142	.072	.021															

pcc	80%			70%			50%			30%			10%			0
pw	50%	30%	10%	50%	30%	10%	50%	30%	10%	50%	30%	10%	50%	30%	10%	0
pfc	20%			20%			20%			20%			20%			0
RCR	RCR:Room Cavity Ratio						Ceiling Cavity Exitance Coefficients(CCEC)									
0.0	.222	.222	.222	.190	.190	.190	.130	.130	.130	.074	.074	.074	.024	.024	.024	
1.0	.212	.188	.166	.182	.161	.143	.124	.111	.099	.072	.064	.057	.023	.021	.019	
2.0	.204	.164	.130	.175	.141	.112	.120	.098	.078	.069	.057	.046	.022	.018	.015	
3.0	.197	.147	.107	.169	.126	.092	.116	.088	.065	.067	.051	.038	.021	.017	.013	
4.0	.189	.133	.091	.162	.115	.079	.112	.080	.056	.065	.047	.033	.021	.015	.011	
5.0	.182	.123	.080	.156	.106	.069	.107	.074	.049	.062	.044	.029	.020	.014	.010	
6.0	.174	.115	.072	.150	.099	.063	.103	.070	.044	.060	.041	.026	.019	.013	.009	
7.0	.168	.108	.066	.144	.094	.058	.100	.066	.041	.058	.039	.024	.019	.013	.008	
8.0	.161	.102	.062	.139	.089	.054	.096	.062	.038	.056	.037	.023	.018	.012	.008	
9.0	.155	.097	.058	.134	.084	.051	.093	.059	.036	.054	.035	.021	.017	.011	.007	
10.0	.150	.093	.055	.129	.081	.048	.089	.057	.034	.052	.034	.020	.017	.011	.007	

C Range: 0 - 360DEG  
C Interval: 30.0DEG  
Test Speed: HIGH  
Temperature:25.3℃  
Operators:  
Test Date:2025-03-11

γ Range: 0 - 180DEG  
γ Interval: 1.0DEG  
Test System:EVERFINE GO-2000B\_V1 SYSTEM V2.00.488  
Humidity:65.0%  
Test Distance:6.360m [K=1.0000]  
Remarks:

UGR(Unified Glare Rating) Table

Test:U:24.00V I:0.1657A P:3.977W PF:1.000 Freq:0Hz Lamp Flux:25.2995x1 lm											
NAME: SF15-24V-5050-60-RGBW-2200K-B					TYPE:			WEIGHT:			
SPEC.:					DIM.: Length=1m			SERIAL No.:			
MFR.: OLympia lighting					SUR.:			Shielding Angle:			
ceiling/cavity	0.7	0.7	0.5	0.5	0.3	0.7	0.7	0.5	0.5	0.3	
walls	0.5	0.3	0.5	0.3	0.3	0.5	0.3	0.5	0.3	0.3	
working plane	0.2	0.2	0.2	0.2	0.2	0.2	0.2	0.2	0.2	0.2	
Room dimensions		Viewed crosswise					Viewed endwise				
x = 2H y = 2H	2H	22.7	24.1	23.0	24.4	24.7	22.8	24.3	23.1	24.5	24.8
	3H	24.2	25.5	24.5	25.8	26.2	24.4	25.8	24.8	26.1	26.4
	4H	24.8	26.1	25.2	26.4	26.7	25.1	26.4	25.5	26.8	27.1
	6H	25.2	26.5	25.6	26.8	27.2	25.7	27.0	26.1	27.3	27.7
	8H	25.4	26.6	25.8	26.9	27.3	26.0	27.2	26.4	27.5	27.9
	12H	25.5	26.6	25.9	27.0	27.4	26.2	27.3	26.6	27.7	28.1
4H	2H	23.3	24.6	23.7	24.9	25.2	23.4	24.7	23.8	25.0	25.3
	3H	25.0	26.1	25.4	26.5	26.9	25.2	26.3	25.6	26.7	27.1
	4H	25.7	26.8	26.2	27.1	27.6	26.1	27.1	26.5	27.5	27.9
	6H	26.3	27.2	26.8	27.6	28.1	26.8	27.7	27.3	28.2	28.6
	8H	26.5	27.4	27.0	27.8	28.3	27.1	28.0	27.6	28.4	28.9
	12H	26.7	27.4	27.1	27.9	28.4	27.4	28.2	27.9	28.6	29.1
8H	4H	26.0	26.9	26.5	27.3	27.8	26.4	27.2	26.8	27.6	28.1
	6H	26.8	27.5	27.3	28.0	28.5	27.3	28.0	27.8	28.5	29.0
	8H	27.1	27.7	27.6	28.2	28.7	27.7	28.3	28.2	28.8	29.4
	12H	27.3	27.8	27.8	28.4	28.9	28.1	28.6	28.6	29.1	29.7
12H	4H	26.1	26.8	26.6	27.3	27.8	26.4	27.1	26.9	27.6	28.1
	6H	26.9	27.5	27.4	28.0	28.5	27.3	28.0	27.9	28.5	29.0
	8H	27.2	27.8	27.8	28.3	28.8	27.8	28.3	28.4	28.9	29.4
Variations with the observer position at spacings(CIE Pub.117):											
S = 1.0H		+ 0.1 / - 0.2					+ 0.1 / - 0.2				
1.5H		+ 0.2 / - 0.3					+ 0.2 / - 0.3				
2.0H		+ 0.1 / - 0.3					+ 0.1 / - 0.3				

CIE Pub.117, 25.30 lm Total Lamp Luminous Flux Correct (8log(F/F0) = -12.8)  
Area: 0.0115 m2

C Range: 0 - 360DEG  
C Interval: 30.0DEG  
Test Speed: HIGH  
Temperature:25.3℃  
Operators:  
Test Date:2025-03-11

γ Range: 0 - 180DEG  
γ Interval: 1.0DEG  
Test System:EVERFINE GO-2000B\_V1 SYSTEM V2.00.488  
Humidity:65.0%  
Test Distance:6.360m [K=1.0000]  
Remarks:

## UTILIZATION FACTORS TABLE

Test:U:24.00V I:0.1657A P:3.977W PF:1.000 Freq:0Hz Lamp Flux:25.2995x1 lm		
NAME: SF15-24V-5050-60-RGBW-2200K-B	TYPE:	WEIGHT:
SPEC.:	DIM.: Length=1m	SERIAL No.:
MFR.: OLympia lighting	SUR.:	Shielding Angle:

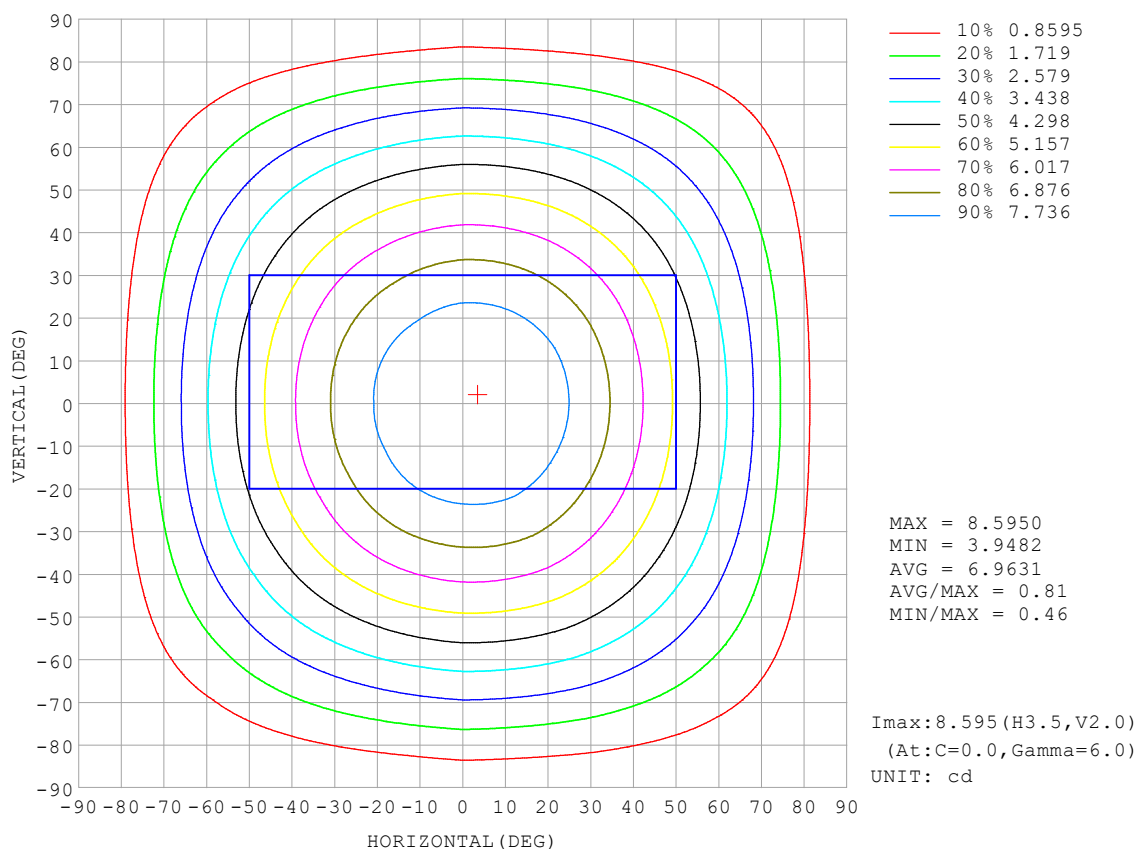
REFLECTANCE										
Ceiling	0.8	0.8	0.8	0.7	0.7	0.7	0.5	0.5	0.5	0
Walls	0.7	0.5	0.3	0.7	0.5	0.3	0.7	0.5	0.3	0
Working plane	0.2	0.2	0.2	0.2	0.2	0.2	0.2	0.2	0.2	0
ROOM INDEX	UTILIZATION FACTORS (PERCENT) $k(RI) \times RCR = 5$									
$k = 0.60$	56	45	38	56	44	38	54	44	37	31
0.80	66	55	47	65	54	47	63	53	46	39
1.00	75	63	56	73	63	56	71	64	55	47
1.25	82	71	64	80	70	63	77	68	62	54
1.50	87	77	69	85	75	69	81	73	67	59
2.00	93	85	78	91	83	77	87	81	75	67
2.50	97	89	83	95	88	82	91	85	80	71
3.00	101	94	88	98	92	87	94	88	84	75
4.00	105	99	94	102	97	92	97	93	89	79
5.00	107	102	98	105	100	96	99	96	93	82
ROOM INDEX	UF (total)									Direct
According to DIN EN 13032-2 2004			Suspended					SHRNOM = 1.25		

C Range: 0 - 360DEG  
 C Interval: 30.0DEG  
 Test Speed: HIGH  
 Temperature: 25.3°C  
 Operators:  
 Test Date: 2025-03-11

γ Range: 0 - 180DEG  
 γ Interval: 1.0DEG  
 Test System: EVERFINE GO-2000B\_V1 SYSTEM V2.00.488  
 Humidity: 65.0%  
 Test Distance: 6.360m [K=1.0000]  
 Remarks:

## ISOCANDELA DIAGRAM

Test:U:24.00V I:0.1657A P:3.977W PF:1.000 Freq:0Hz Lamp Flux:25.2995x1 lm		
NAME: SF15-24V-5050-60-RGBW-2200K-B	TYPE:	WEIGHT:
SPEC.:	DIM.: Length=1m	SERIAL No.:
MFR.: OLympia lighting	SUR.:	Shielding Angle:



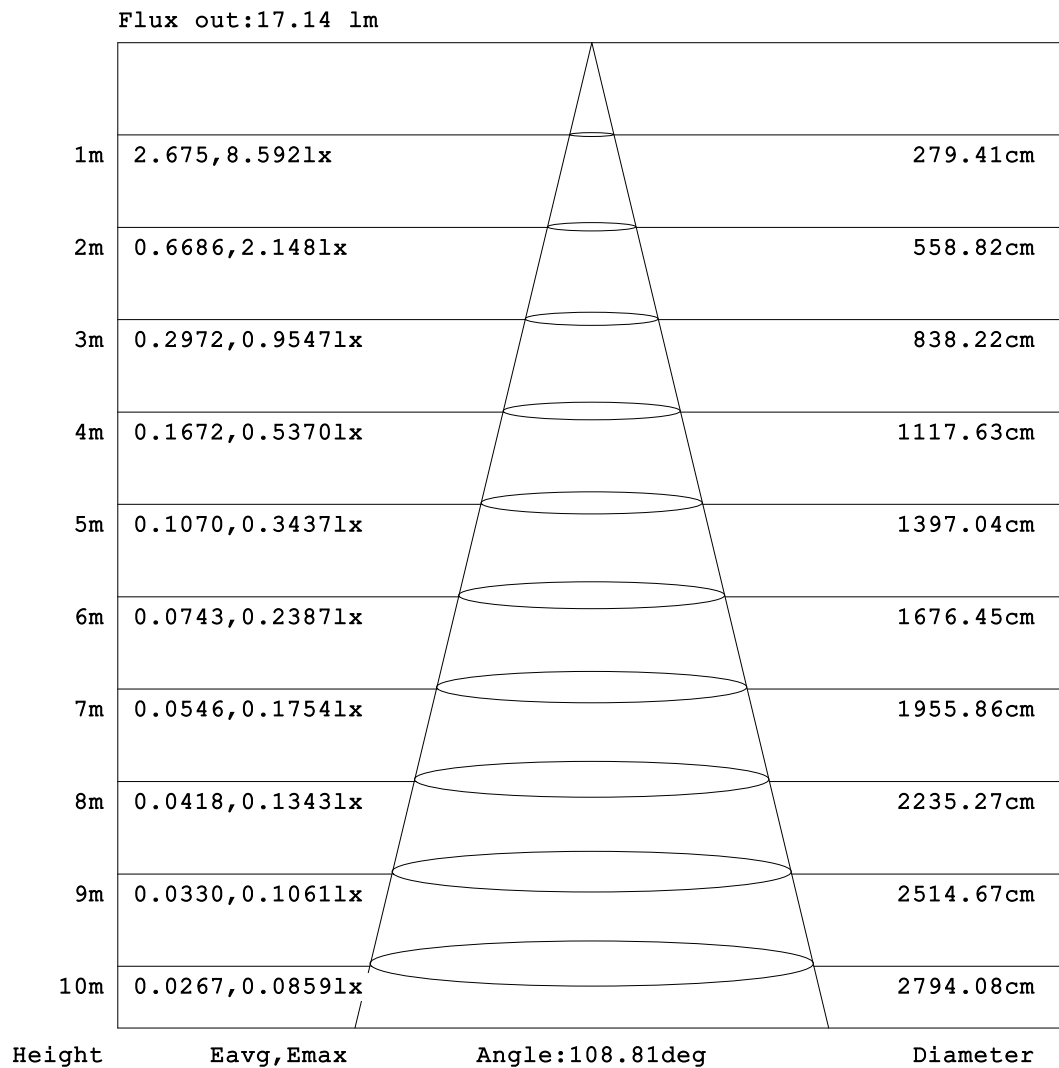
C Range: 0 - 360DEG  
C Interval: 30.0DEG  
Test Speed: HIGH  
Temperature: 25.3°C  
Operators:  
Test Date: 2025-03-11

γ Range: 0 - 180DEG  
γ Interval: 1.0DEG  
Test System: EVERFINE GO-2000B\_V1 SYSTEM V2.00.488  
Humidity: 65.0%  
Test Distance: 6.360m [K=1.0000]  
Remarks:



## AAI Figure

Test:U:24.00V I:0.1657A P:3.977W PF:1.000 Freq:0Hz Lamp Flux:25.2995x1 lm		
NAME: SF15-24V-5050-60-RGBW-2200K-B	TYPE:	WEIGHT:
SPEC.:	DIM.: Length=1m	SERIAL No.:
MFR.: OLympia lighting	SUR.:	Shielding Angle:



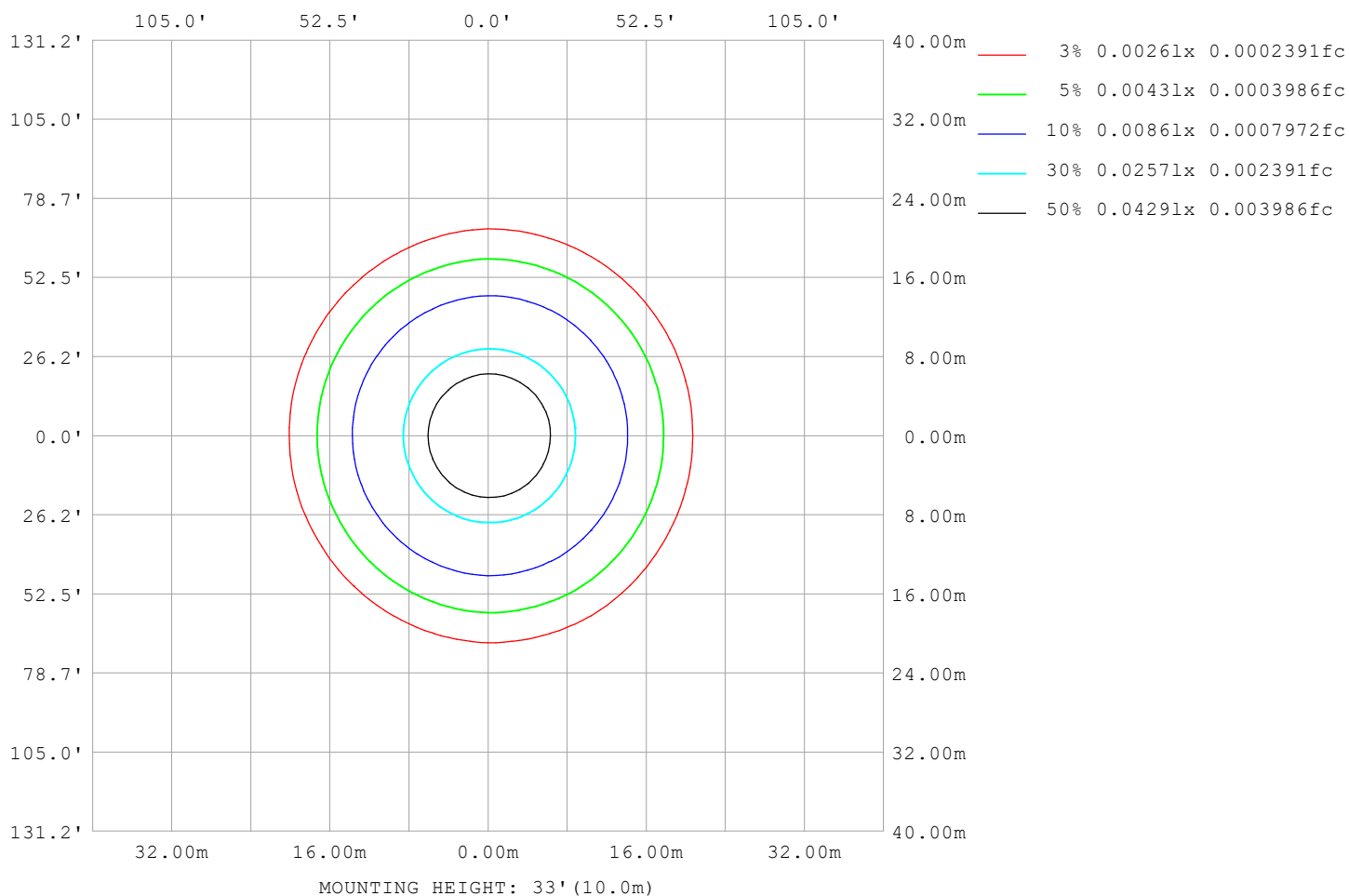
Note:The Curves indicate the illuminated area and the average illumination when the luminaire is at different distance.

C Range: 0 - 360DEG  
C Interval: 30.0DEG  
Test Speed: HIGH  
Temperature:25.3℃  
Operators:  
Test Date:2025-03-11

γ Range: 0 - 180DEG  
γ Interval: 1.0DEG  
Test System:EVERFINE GO-2000B\_V1 SYSTEM V2.00.488  
Humidity:65.0%  
Test Distance:6.360m [K=1.0000]  
Remarks:

## ISOLUX DIAGRAM

Test:U:24.00V I:0.1657A P:3.977W PF:1.000 Freq:0Hz Lamp Flux:25.2995x1 lm		
NAME: SF15-24V-5050-60-RGBW-2200K-B	TYPE:	WEIGHT:
SPEC.:	DIM.: Length=1m	SERIAL No.:
MFR.: OLympia lighting	SUR.:	Shielding Angle:



C Range: 0 - 360DEG  
C Interval: 30.0DEG  
Test Speed: HIGH  
Temperature: 25.3°C  
Operators:  
Test Date: 2025-03-11

γ Range: 0 - 180DEG  
γ Interval: 1.0DEG  
Test System: EVERFINE GO-2000B\_V1 SYSTEM V2.00.488  
Humidity: 65.0%  
Test Distance: 6.360m [K=1.0000]  
Remarks:

## LED Avg.L Report

Test:U:24.00V I:0.1657A P:3.977W PF:1.000 Freq:0Hz Lamp Flux:25.2995x1 lm		
NAME: SF15-24V-5050-60-RGBW-2200K-B	TYPE:	WEIGHT:
SPEC.:	DIM.: Length=1m	SERIAL No.:
MFR.: OLympia lighting	SUR.:	Shielding Angle:

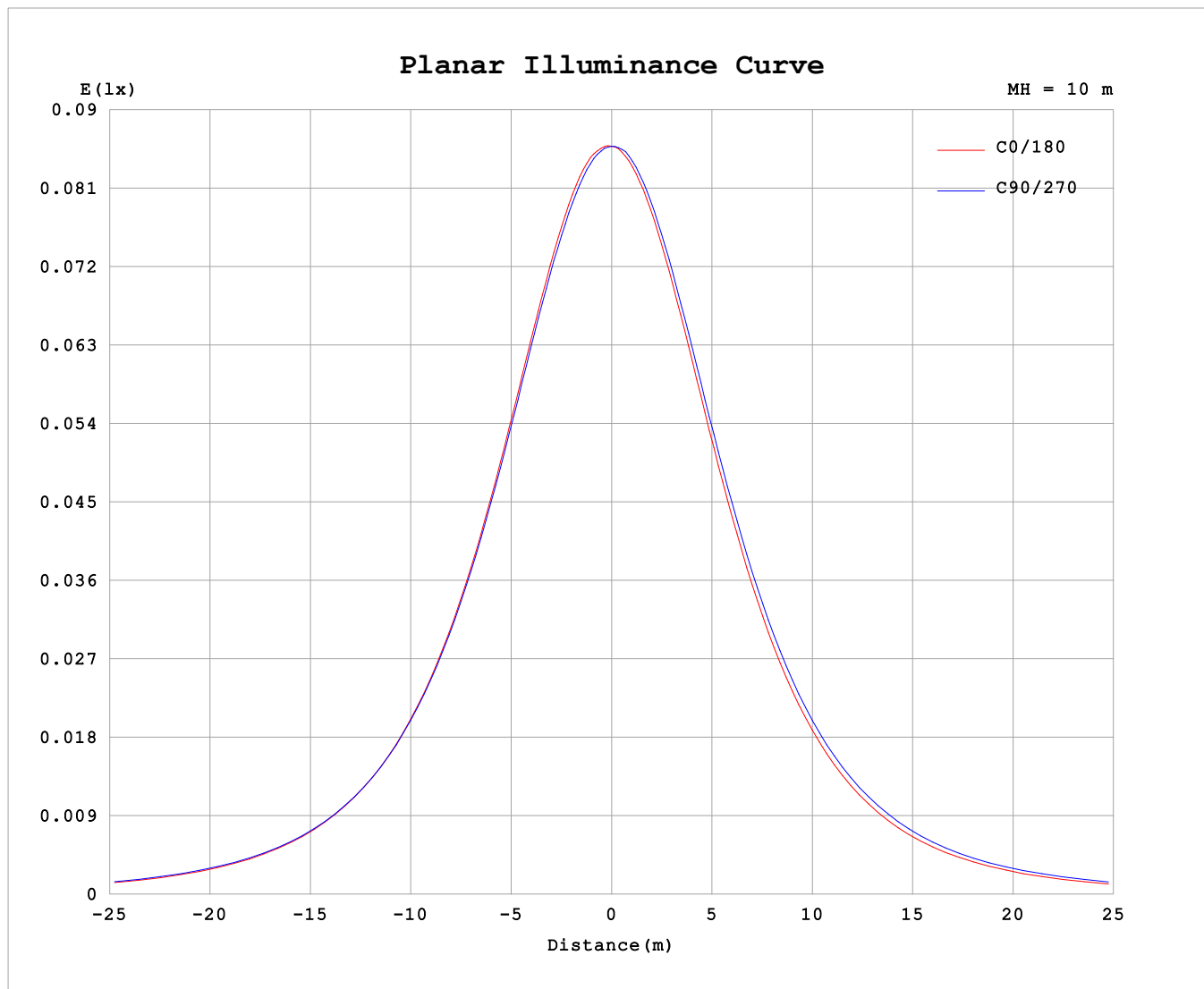
AvgL	cd/m2
L_0~180 (65) av	590
L_0~180 (75) av	507
L_0~180 (85) av	329
L_90~270 (65) av	647
L_90~270 (75) av	628
L_90~270 (85) av	699
L_45 (65) av	612
L_45 (75) av	556
L_45 (85) av	454

Standard: GB/T 29293-2012

C Range: 0 - 360DEG  
C Interval: 30.0DEG  
Test Speed: HIGH  
Temperature:25.3℃  
Operators:  
Test Date:2025-03-11

γ Range: 0 - 180DEG  
γ Interval: 1.0DEG  
Test System:EVERFINE GO-2000B\_V1 SYSTEM V2.00.488  
Humidity:65.0%  
Test Distance:6.360m [K=1.0000]  
Remarks:

## Planar Illuminance Curve



C Range: 0 - 360DEG  
C Interval: 30.0DEG  
Test Speed: HIGH  
Temperature: 25.3 °C  
Operators:  
Test Date: 2025-03-11

$\gamma$  Range: 0 - 180DEG  
 $\gamma$  Interval: 1.0DEG  
Test System: EVERFINE GO-2000B\_V1 SYSTEM V2.00.488  
Humidity: 65.0%  
Test Distance: 6.360m [K=1.0000]  
Remarks:

## LUMINOUS DISTRIBUTION INTENSITY DATA

Test:U:24.00V I:0.1657A P:3.977W PF:1.000 Freq:0Hz Lamp Flux:25.2995x1 lm		
NAME: SF15-24V-5050-60-RGBW-2200K-B	TYPE:	WEIGHT:
SPEC.:	DIM.: Length=1m	SERIAL No.:
MFR.: OLYMPIA lighting	SUR.:	Shielding Angle:

Table--1

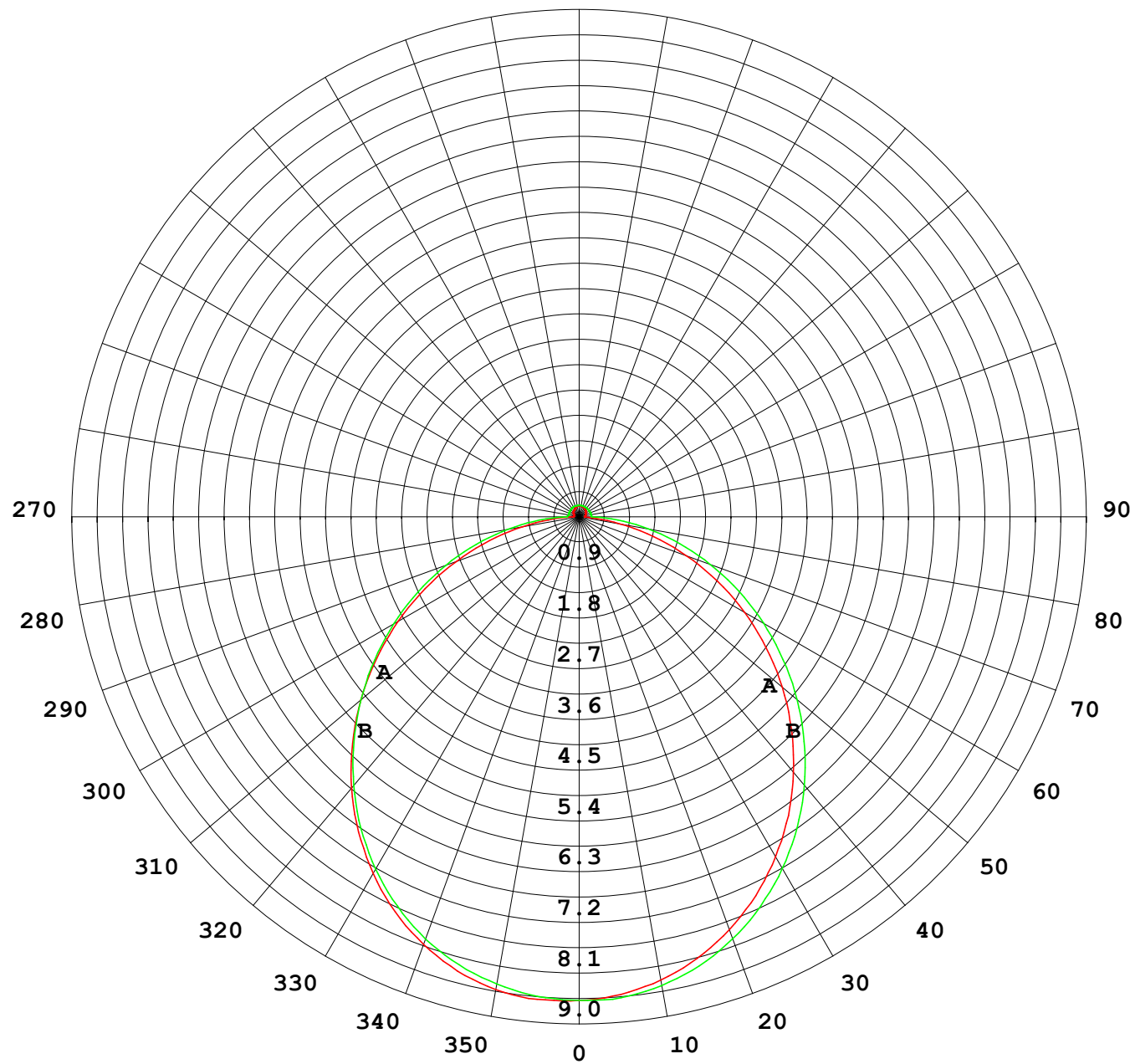
UNIT: cd

C (DEG) γ (DEG)	0	30	60	90	120	150	180	210	240	270	300	330						
0	8.58	8.58	8.58	8.58	8.58	8.58	8.58	8.58	8.58	8.58	8.58	8.58						
5	8.60	8.57	8.59	8.54	8.54	8.50	8.51	8.52	8.52	8.57	8.56	8.58						
10	8.52	8.48	8.49	8.42	8.40	8.34	8.35	8.37	8.39	8.45	8.46	8.52						
15	8.35	8.30	8.31	8.23	8.19	8.11	8.11	8.14	8.17	8.25	8.28	8.34						
20	8.08	8.04	8.06	7.97	7.91	7.81	7.80	7.83	7.88	7.97	8.02	8.07						
25	7.73	7.70	7.72	7.63	7.54	7.43	7.42	7.45	7.52	7.62	7.68	7.73						
30	7.31	7.29	7.32	7.22	7.12	6.98	6.98	7.01	7.09	7.21	7.27	7.32						
35	6.83	6.81	6.85	6.76	6.63	6.49	6.48	6.51	6.61	6.75	6.81	6.84						
40	6.29	6.28	6.33	6.23	6.09	5.94	5.92	5.97	6.07	6.22	6.28	6.30						
45	5.69	5.69	5.74	5.65	5.50	5.35	5.33	5.38	5.49	5.65	5.70	5.71						
50	5.06	5.07	5.13	5.06	4.89	4.72	4.71	4.76	4.88	5.05	5.09	5.09						
55	4.39	4.40	4.48	4.43	4.25	4.07	4.05	4.11	4.25	4.42	4.45	4.43						
60	3.71	3.72	3.84	3.80	3.60	3.42	3.39	3.46	3.61	3.78	3.79	3.75						
65	3.02	3.04	3.17	3.15	2.94	2.75	2.71	2.79	2.95	3.13	3.12	3.07						
70	2.32	2.35	2.49	2.52	2.30	2.08	2.03	2.12	2.29	2.48	2.45	2.39						
75	1.65	1.69	1.84	1.89	1.67	1.42	1.37	1.46	1.66	1.85	1.80	1.72						
80	1.02	1.06	1.21	1.28	1.04	0.79	0.74	0.85	1.04	1.25	1.18	1.09						
85	0.43	0.49	0.62	0.71	0.45	0.26	0.22	0.31	0.47	0.69	0.60	0.51						
90	0.11	0.16	0.18	0.22	0.17	0.12	0.10	0.14	0.17	0.23	0.22	0.12						
95	0.10	0.13	0.16	0.20	0.17	0.13	0.10	0.14	0.18	0.22	0.17	0.11						
100	0.10	0.12	0.16	0.20	0.17	0.14	0.11	0.13	0.18	0.21	0.17	0.11						
105	0.10	0.13	0.16	0.20	0.17	0.14	0.12	0.13	0.19	0.21	0.16	0.11						
110	0.11	0.14	0.16	0.20	0.17	0.15	0.12	0.13	0.19	0.21	0.17	0.11						
115	0.11	0.14	0.16	0.20	0.17	0.15	0.13	0.14	0.19	0.21	0.18	0.11						
120	0.12	0.15	0.16	0.20	0.17	0.16	0.14	0.15	0.20	0.21	0.18	0.12						
125	0.13	0.16	0.16	0.20	0.17	0.16	0.14	0.15	0.20	0.21	0.18	0.13						
130	0.14	0.17	0.16	0.20	0.17	0.17	0.15	0.16	0.20	0.21	0.19	0.14						
135	0.14	0.17	0.17	0.20	0.17	0.18	0.16	0.16	0.20	0.21	0.19	0.14						
140	0.15	0.17	0.18	0.20	0.18	0.18	0.17	0.17	0.21	0.21	0.19	0.15						
145	0.15	0.18	0.18	0.21	0.19	0.19	0.18	0.17	0.20	0.21	0.20	0.15						
150	0.16	0.19	0.19	0.21	0.19	0.19	0.18	0.18	0.20	0.21	0.20	0.16						
155	0.17	0.19	0.20	0.21	0.19	0.20	0.19	0.18	0.20	0.21	0.20	0.17						
160	0.18	0.20	0.20	0.21	0.19	0.20	0.19	0.18	0.20	0.21	0.20	0.18						
165	0.19	0.20	0.20	0.20	0.19	0.20	0.19	0.19	0.20	0.21	0.20	0.19						
170	0.19	0.20	0.20	0.20	0.19	0.20	0.19	0.19	0.20	0.21	0.20	0.19						
175	0.19	0.20	0.20	0.20	0.19	0.20	0.19	0.19	0.20	0.21	0.20	0.20						
180	0.19	0.20	0.20	0.20	0.20	0.20	0.19	0.20	0.20	0.21	0.20	0.20						

C Range: 0 - 360DEG  
C Interval: 30.0DEG  
Test Speed: HIGH  
Temperature:25.3℃  
Operators:  
Test Date:2025-03-11

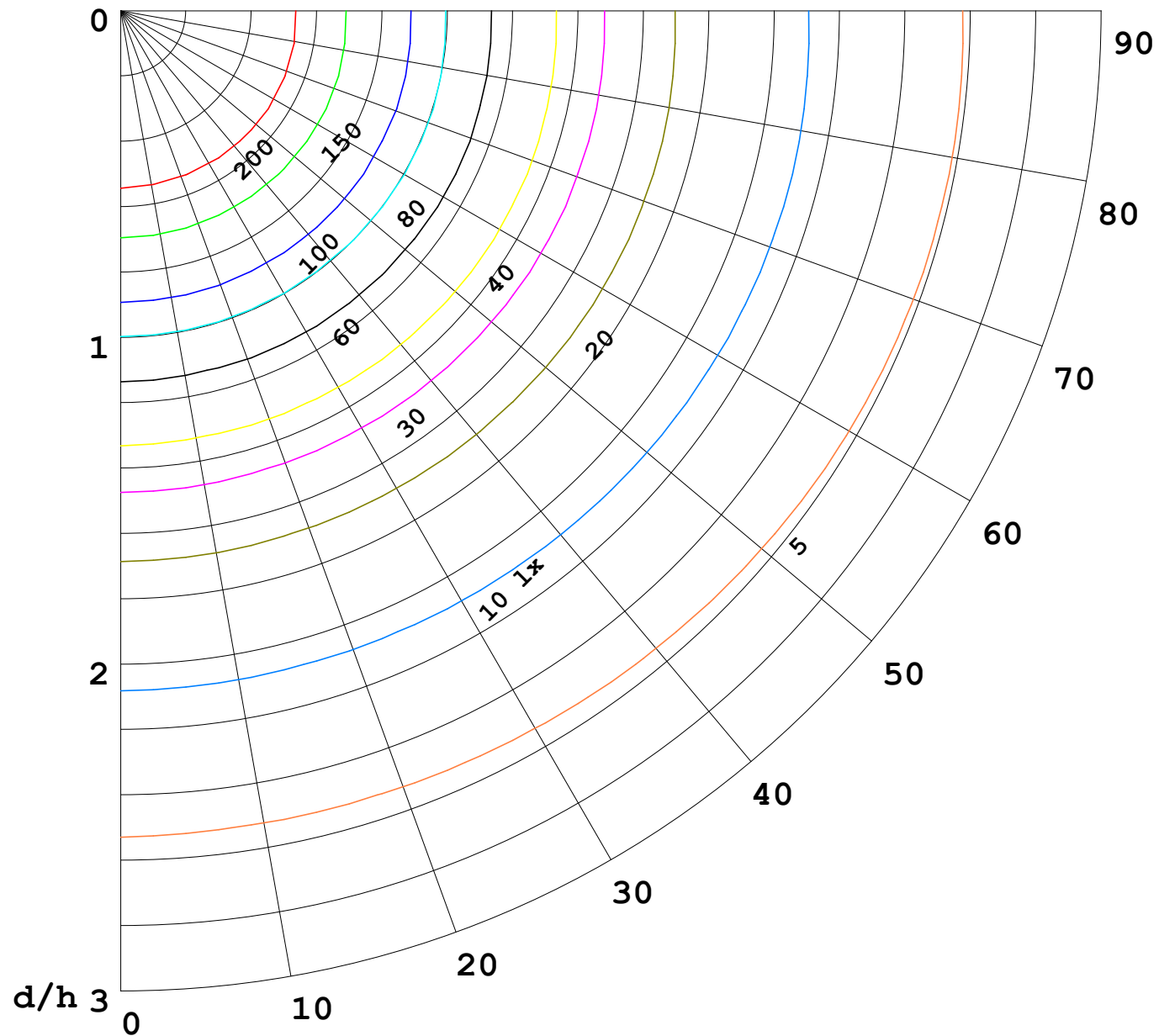
γ Range: 0 - 180DEG  
γ Interval: 1.0DEG  
Test System:EVERFINE GO-2000B\_V1 SYSTEM V2.00.488  
Humidity:65.0%  
Test Distance:6.360m [K=1.0000]  
Remarks:

I (cd)



1000 lm

$\kappa = 1$



F = 1000 lm  
 K = 0.7  
 Hcc = 0.8 m  
 Hfc = 0.0 m  
 Eave = 100 lx

	Pcc	Pw	Pfc
—————	70	50	30
—————	50	30	20

