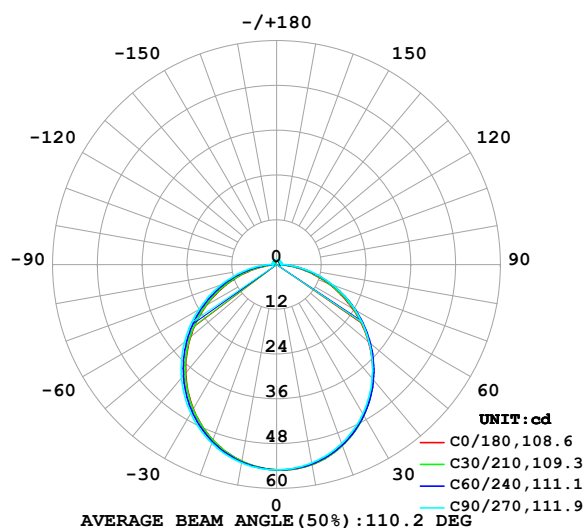


LUMINAIRE PHOTOMETRIC TEST REPORT

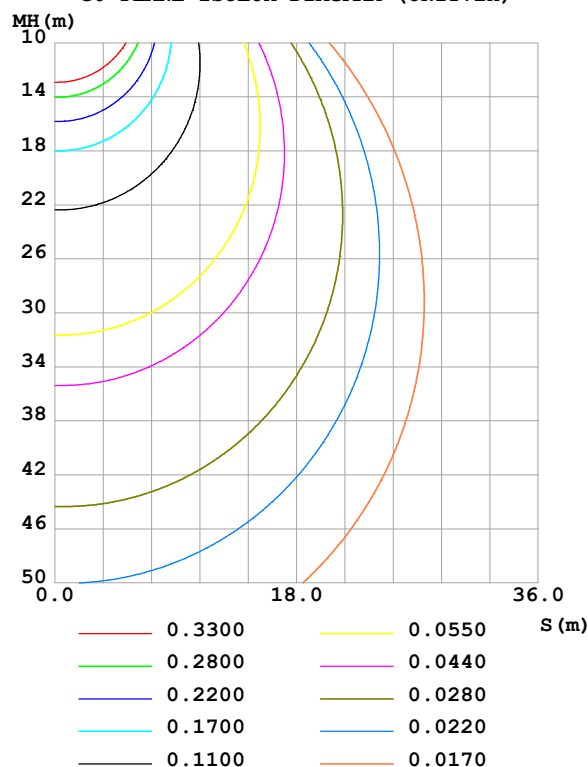
Test:U:24.00V I:0.2265A P:5.436W PF:1.000 Freq:0Hz Lamp Flux:161.305x1 lm		
NAME: SF15-24V-5050-60-RGBW-2200K-W	TYPE:	WEIGHT:
SPEC.:	DIM.: Length=1m	SERIAL No.:
MFR.: OLympia lighting	SUR.:	Shielding Angle:

DATA OF LAMP		PHOTOMETRIC DATA				Eff: 29.68 lm/W
MODEL	5050	Imax (cd)	55.05	S/MH(C0/180)	1.21	
NOMINAL POWER(W)		LOR(%)	100.0	S/MH(C90/270)	1.24	
RATED VOLTAGE(V)	24	TOTAL FLUX(lm)	161.31	η UP,DN(C0-180)	2.0,48.3	
NOMINAL FLUX(lm)	161.305	CIE CLASS	DIRECT	η UP,DN(C180-360)	2.0,47.7	
LAMPS INSIDE	1	η up (%)	4.0	CIBSE SHR NOM	1.25	
TEST VOLTAGE(V)		η down (%)	96.0	CIBSE SHR MAX	1.35	

LUMINOUS INTENSITY DISTRIBUTION DIAGRAM



C0 PLANE ISOLUX DIAGRAM (UNIT:lx)



C Range: 0 - 360DEG
C Interval: 30.0DEG
Test Speed: HIGH
Temperature: 25.3 °C
Operators:
Test Date: 2025-03-11

γ Range: 0 - 180DEG
 γ Interval: 1.0DEG
Test System: EVERFINE GO-2000B_V1 SYSTEM V2.00.488
Humidity: 65.0%
Test Distance: 6.360m [K=1.0000]
Remarks:

ZONAL FLUX DIAGRAM

ZONAL FLUX DIAGRAM:

γ	C0	C45	C90	C135	C180	C225	C270	C315	γ	Φ zone	Φ total	%lum, lamp
10	54.41	54.33	53.99	53.63	53.52	53.62	53.96	54.32	0- 10	5.201	5.201	3.22,3.22
20	51.56	51.52	51.02	50.30	49.99	50.26	50.89	51.46	10- 20	14.86	20.06	12.4,12.4
30	46.65	46.73	46.21	45.15	44.67	45.11	46.00	46.62	20- 30	22.39	42.45	26.3,26.3
40	40.06	40.31	39.86	38.53	37.93	38.50	39.64	40.17	30- 40	26.77	69.23	42.9,42.9
50	32.18	32.64	32.41	30.84	30.15	30.83	32.17	32.49	40- 50	27.50	96.72	60,60
60	23.52	24.16	24.26	22.52	21.69	22.54	24.03	24.06	50- 60	24.65	121.4	75.2,75.2
70	14.65	15.43	15.90	14.01	12.99	14.06	15.72	15.40	60- 70	18.84	140.2	86.9,86.9
80	6.333	7.180	7.921	5.856	4.754	5.984	7.818	7.176	70- 80	11.19	151.4	93.9,93.9
90	0.6114	0.8694	1.297	0.8650	0.5478	0.8745	1.159	0.8546	80- 90	3.478	154.9	96,96
100	0.6370	0.8578	1.210	0.9138	0.6228	0.9236	1.187	0.7724	90-100	0.9453	155.8	96.6,96.6
110	0.7436	0.9249	1.207	0.9932	0.7237	1.0000	1.198	0.8546	100-110	0.9701	156.8	97.2,97.2
120	0.8446	0.9870	1.206	1.055	0.8274	1.053	1.201	0.9239	110-120	0.9733	157.8	97.8,97.8
130	0.9282	1.035	1.205	1.099	0.9226	1.095	1.205	0.9903	120-130	0.9275	158.7	98.4,98.4
140	1.015	1.086	1.216	1.145	1.006	1.149	1.222	1.067	130-140	0.8398	159.5	98.9,98.9
150	1.101	1.152	1.276	1.220	1.104	1.205	1.248	1.149	140-150	0.7191	160.3	99.4,99.4
160	1.199	1.222	1.303	1.264	1.202	1.264	1.288	1.230	150-160	0.5617	160.8	99.7,99.7
170	1.260	1.287	1.317	1.305	1.271	1.308	1.323	1.299	160-170	0.3603	161.2	99.9,99.9
180	1.294	1.328	1.340	1.337	1.297	1.329	1.343	1.338	170-180	0.1251	161.3	100,100
DEG	LUMINOUS INTENSITY:cd									UNIT:lm		

Conical surface Flux(90deg): 83.116 lm

%lum = 51.5%

%lamp = 51.5%

Conical surface Flux(130deg): 131.67 lm

%lum = 81.6%

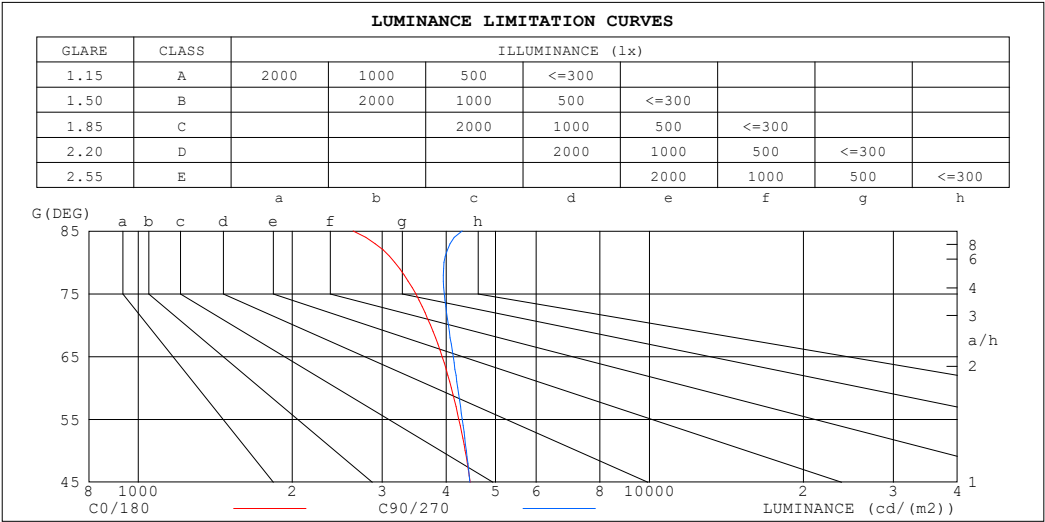
%lamp = 81.6%

C Range: 0 - 360DEG
 C Interval: 30.0DEG
 Test Speed: HIGH
 Temperature:25.3℃
 Operators:
 Test Date:2025-03-11

γ Range: 0 - 180DEG
 γ Interval: 1.0DEG
 Test System:EVERFINE GO-2000B_V1 SYSTEM V2.00.488
 Humidity:65.0%
 Test Distance:6.360m [K=1.0000]
 Remarks:

LUMINANCE LIMITATION CURVES

Test:U:24.00V I:0.2265A P:5.436W PF:1.000 Freq:0Hz Lamp Flux:161.305x1 lm		
NAME: SF15-24V-5050-60-RGBW-2200K-W	TYPE:	WEIGHT:
SPEC.:	DIM.: Length=1m	SERIAL No.:
MFR.: OLympia lighting	SUR.:	Shielding Angle:



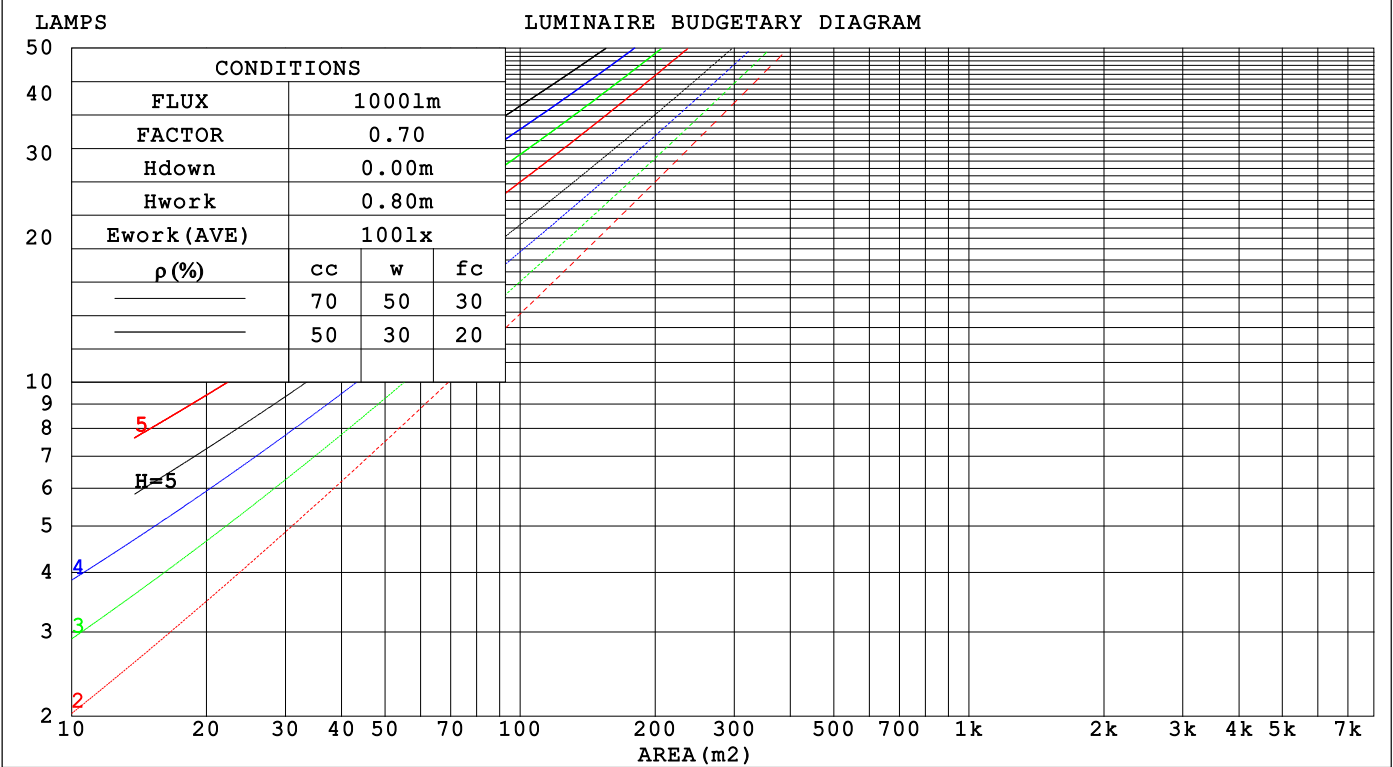
LUMINANCE cd/(m2)		
G (DEG)	C0/180	C90/270
85	2629	4301
80	3175	3964
75	3487	3970
70	3729	4040
65	3929	4128
60	4095	4216
55	4236	4301
50	4358	4382
45	4461	4455

C Range: 0 - 360DEG	γ Range: 0 - 180DEG
C Interval: 30.0DEG	γ Interval: 1.0DEG
Test Speed: HIGH	Test System:EVERFINE GO-2000B_V1 SYSTEM V2.00.488
Temperature:25.3℃	Humidity:65.0%
Operators:	Test Distance:6.360m [K=1.0000]
Test Date:2025-03-11	Remarks:

CU AND LUMINAIRE BUDGETARY ESTIMATE DIAGRAM

Test:U:24.00V I:0.2265A P:5.436W PF:1.000 Freq:0Hz Lamp Flux:161.305x1 lm		
NAME: SF15-24V-5050-60-RGBW-2200K-W	TYPE:	WEIGHT:
SPEC.:	DIM.: Length=1m	SERIAL No.:
MFR.: OLYMPIA lighting	SUR.:	Shielding Angle:

pcc	80%			70%			50%			30%			10%			0
pw	50%	30%	10%	50%	30%	10%	50%	30%	10%	50%	30%	10%	50%	30%	10%	0
pfc	20%			20%			20%			20%			20%			0
RCR	RCR:Room Cavity Ratio															



C Range: 0 - 360DEG
C Interval: 30.0DEG
Test Speed: HIGH
Temperature:25.3℃
Operators:
Test Date:2025-03-11

γ Range: 0 - 180DEG
γ Interval: 1.0DEG
Test System:EVERFINE GO-2000B_V1 SYSTEM V2.00.488
Humidity:65.0%
Test Distance:6.360m [K=1.0000]
Remarks:

WEC AND CCEC

Test:U:24.00V I:0.2265A P:5.436W PF:1.000 Freq:0Hz Lamp Flux:161.305x1 lm		
NAME: SF15-24V-5050-60-RGBW-2200K-W	TYPE:	WEIGHT:
SPEC.:	DIM.: Length=1m	SERIAL No.:
MFR.: OLympia lighting	SUR.:	Shielding Angle:

pcc	80%			70%			50%			30%			10%			0														
pw	50%	30%	10%	50%	30%	10%	50%	30%	10%	50%	30%	10%	50%	30%	10%	0														
pfc	20%			20%			20%			20%			20%			0														
RCR	RCR:Room Cavity Ratio															Wall Exitance Coefficients(WEC)														
0.0																														
1.0	.312	.177	.056	.303	.173	.055	.288	.165	.053	.273	.158	.051	.260	.151	.049															
2.0	.291	.160	.049	.284	.156	.048	.270	.150	.047	.258	.144	.045	.246	.139	.044															
3.0	.269	.143	.043	.262	.141	.042	.250	.136	.041	.239	.131	.040	.228	.126	.039															
4.0	.248	.129	.038	.242	.127	.037	.231	.123	.037	.221	.119	.036	.211	.115	.035															
5.0	.229	.117	.034	.224	.115	.033	.214	.111	.033	.205	.108	.032	.196	.105	.032															
6.0	.212	.106	.030	.208	.105	.030	.199	.102	.030	.191	.099	.029	.183	.096	.029															
7.0	.197	.098	.028	.193	.096	.027	.185	.094	.027	.178	.091	.027	.171	.089	.026															
8.0	.184	.090	.025	.181	.089	.025	.173	.087	.025	.167	.084	.024	.160	.082	.024															
9.0	.173	.084	.023	.169	.083	.023	.163	.081	.023	.157	.079	.022	.151	.077	.022															
10.0	.162	.078	.022	.159	.077	.021	.153	.075	.021	.148	.073	.021	.143	.072	.021															

pcc	80%			70%			50%			30%			10%			0
pw	50%	30%	10%	50%	30%	10%	50%	30%	10%	50%	30%	10%	50%	30%	10%	0
pfc	20%			20%			20%			20%			20%			0
RCR	RCR:Room Cavity Ratio						Ceiling Cavity Exitance Coefficients (CCEC)									
0.0	.221	.221	.221	.189	.189	.189	.129	.129	.129	.074	.074	.074	.024	.024	.024	
1.0	.211	.187	.165	.181	.160	.142	.124	.110	.098	.071	.064	.057	.023	.021	.018	
2.0	.203	.163	.129	.174	.140	.111	.119	.097	.078	.069	.056	.046	.022	.018	.015	
3.0	.195	.145	.105	.167	.125	.091	.115	.087	.064	.066	.051	.038	.021	.017	.012	
4.0	.188	.132	.090	.161	.114	.078	.111	.080	.055	.064	.047	.032	.021	.015	.011	
5.0	.180	.122	.079	.155	.105	.068	.107	.074	.048	.062	.043	.029	.020	.014	.009	
6.0	.173	.113	.071	.149	.098	.062	.103	.069	.044	.060	.040	.026	.019	.013	.009	
7.0	.166	.107	.065	.143	.092	.056	.099	.065	.040	.057	.038	.024	.019	.012	.008	
8.0	.160	.101	.060	.138	.087	.053	.095	.061	.037	.055	.036	.022	.018	.012	.007	
9.0	.154	.096	.057	.133	.083	.050	.092	.059	.035	.053	.035	.021	.017	.011	.007	
10.0	.148	.092	.054	.128	.080	.047	.089	.056	.034	.052	.033	.020	.017	.011	.007	

C Range: 0 - 360DEG
C Interval: 30.0DEG
Test Speed: HIGH
Temperature:25.3℃
Operators:
Test Date:2025-03-11

γ Range: 0 - 180DEG
γ Interval: 1.0DEG
Test System:EVERFINE GO-2000B_V1 SYSTEM V2.00.488
Humidity:65.0%
Test Distance:6.360m [K=1.0000]
Remarks:

UGR(Unified Glare Rating) Table

Test:U:24.00V I:0.2265A P:5.436W PF:1.000 Freq:0Hz Lamp Flux:161.305x1 lm											
NAME: SF15-24V-5050-60-RGBW-2200K-W					TYPE:			WEIGHT:			
SPEC.:					DIM.: Length=1m			SERIAL No.:			
MFR.: OLympia lighting					SUR.:			Shielding Angle:			
ceiling/cavity	0.7	0.7	0.5	0.5	0.3	0.7	0.7	0.5	0.5	0.3	
walls	0.5	0.3	0.5	0.3	0.3	0.5	0.3	0.5	0.3	0.3	
working plane	0.2	0.2	0.2	0.2	0.2	0.2	0.2	0.2	0.2	0.2	
Room dimensions		Viewed crosswise					Viewed endwise				
x = 2H y = 2H	2H	22.7	24.2	23.0	24.4	24.7	22.8	24.3	23.1	24.5	24.8
	3H	24.2	25.5	24.5	25.8	26.2	24.4	25.8	24.8	26.1	26.4
	4H	24.8	26.1	25.2	26.4	26.7	25.1	26.4	25.5	26.7	27.1
	6H	25.2	26.4	25.6	26.8	27.1	25.7	26.9	26.1	27.2	27.6
	8H	25.4	26.5	25.8	26.9	27.3	25.9	27.1	26.3	27.4	27.8
	12H	25.4	26.6	25.9	26.9	27.3	26.1	27.2	26.5	27.6	28.0
4H	2H	23.3	24.6	23.7	24.9	25.3	23.4	24.7	23.8	25.0	25.4
	3H	25.0	26.1	25.4	26.5	26.9	25.2	26.3	25.6	26.7	27.1
	4H	25.7	26.8	26.2	27.1	27.6	26.1	27.1	26.5	27.5	27.9
	6H	26.3	27.2	26.8	27.6	28.1	26.8	27.7	27.2	28.1	28.6
	8H	26.5	27.3	27.0	27.8	28.3	27.1	27.9	27.5	28.4	28.8
	12H	26.6	27.4	27.1	27.9	28.3	27.3	28.1	27.8	28.6	29.0
8H	4H	26.0	26.9	26.5	27.3	27.8	26.3	27.2	26.8	27.6	28.1
	6H	26.8	27.5	27.3	28.0	28.5	27.2	27.9	27.7	28.4	28.9
	8H	27.1	27.7	27.6	28.2	28.7	27.6	28.2	28.1	28.7	29.3
	12H	27.3	27.8	27.8	28.3	28.9	28.0	28.5	28.5	29.0	29.6
12H	4H	26.1	26.8	26.6	27.3	27.8	26.3	27.1	26.8	27.6	28.1
	6H	26.9	27.5	27.4	28.0	28.5	27.3	27.9	27.8	28.4	28.9
	8H	27.2	27.7	27.7	28.2	28.8	27.7	28.3	28.3	28.8	29.4
Variations with the observer position at spacings(CIE Pub.117):											
S = 1.0H		+ 0.1 / - 0.2					+ 0.1 / - 0.2				
1.5H		+ 0.2 / - 0.3					+ 0.2 / - 0.3				
2.0H		+ 0.1 / - 0.3					+ 0.1 / - 0.3				

CIE Pub.117, 161.3 lm Total Lamp Luminous Flux Correct (8log(F/F0) = -6.3)
Area: 0.0115 m2

C Range: 0 - 360DEG
C Interval: 30.0DEG
Test Speed: HIGH
Temperature:25.3℃
Operators:
Test Date:2025-03-11

γ Range: 0 - 180DEG
γ Interval: 1.0DEG
Test System:EVERFINE GO-2000B_V1 SYSTEM V2.00.488
Humidity:65.0%
Test Distance:6.360m [K=1.0000]
Remarks:

UTILIZATION FACTORS TABLE

Test:U:24.00V I:0.2265A P:5.436W PF:1.000 Freq:0Hz Lamp Flux:161.305x1 lm		
NAME: SF15-24V-5050-60-RGBW-2200K-W	TYPE:	WEIGHT:
SPEC.:	DIM.: Length=1m	SERIAL No.:
MFR.: OLympia lighting	SUR.:	Shielding Angle:

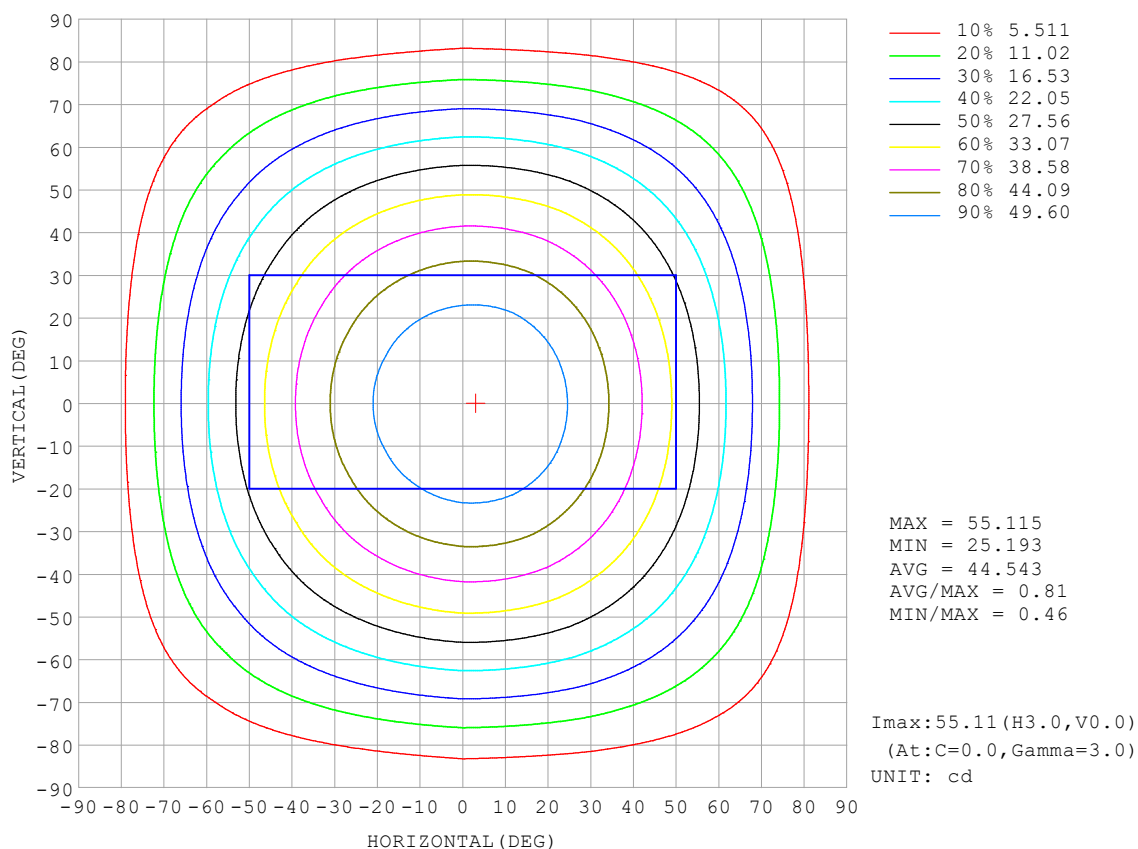
REFLECTANCE										
Ceiling	0.8	0.8	0.8	0.7	0.7	0.7	0.5	0.5	0.5	0
Walls	0.7	0.5	0.3	0.7	0.5	0.3	0.7	0.5	0.3	0
Working plane	0.2	0.2	0.2	0.2	0.2	0.2	0.2	0.2	0.2	0
ROOM INDEX	UTILIZATION FACTORS (PERCENT) $k(RI) \times RCR = 5$									
$k = 0.60$	56	45	38	56	45	38	54	44	38	31
0.80	66	55	47	65	54	47	63	53	47	39
1.00	75	63	56	73	63	56	71	64	55	48
1.25	82	71	64	80	70	63	77	68	62	54
1.50	87	77	70	85	76	69	81	73	68	59
2.00	94	85	78	91	83	77	87	81	75	67
2.50	98	90	83	95	88	82	91	85	80	71
3.00	101	94	88	98	92	87	94	89	84	75
4.00	105	99	94	102	97	93	97	93	89	79
5.00	107	102	98	105	100	96	99	96	93	82
ROOM INDEX	UF (total)									Direct
According to DIN EN 13032-2 2004			Suspended					SHRNOM = 1.25		

C Range: 0 - 360DEG
 C Interval: 30.0DEG
 Test Speed: HIGH
 Temperature: 25.3 °C
 Operators:
 Test Date: 2025-03-11

γ Range: 0 - 180DEG
 γ Interval: 1.0DEG
 Test System: EVERFINE GO-2000B_V1 SYSTEM V2.00.488
 Humidity: 65.0%
 Test Distance: 6.360m [K=1.0000]
 Remarks:

ISOCANDELA DIAGRAM

Test:U:24.00V I:0.2265A P:5.436W PF:1.000 Freq:0Hz Lamp Flux:161.305x1 lm		
NAME: SF15-24V-5050-60-RGBW-2200K-W	TYPE:	WEIGHT:
SPEC.:	DIM.: Length=1m	SERIAL No.:
MFR.: OLympia lighting	SUR.:	Shielding Angle:

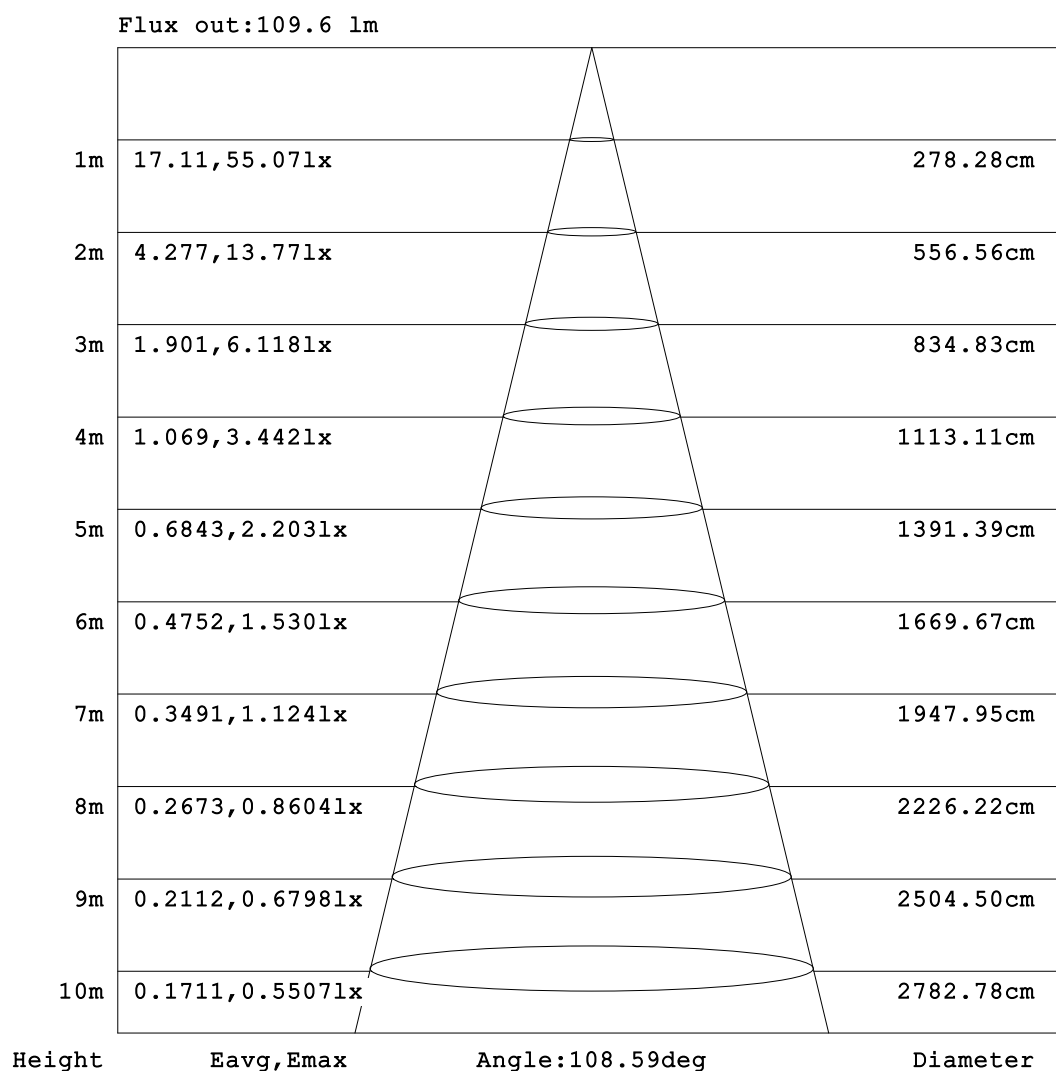


C Range: 0 - 360DEG
C Interval: 30.0DEG
Test Speed: HIGH
Temperature:25.3℃
Operators:
Test Date:2025-03-11

γ Range: 0 - 180DEG
γ Interval: 1.0DEG
Test System:EVERFINE GO-2000B_V1 SYSTEM V2.00.488
Humidity:65.0%
Test Distance:6.360m [K=1.0000]
Remarks:

AAI Figure

Test:U:24.00V I:0.2265A P:5.436W PF:1.000 Freq:0Hz Lamp Flux:161.305x1 lm		
NAME: SF15-24V-5050-60-RGBW-2200K-W	TYPE:	WEIGHT:
SPEC.:	DIM.: Length=1m	SERIAL No.:
MFR.: OLympia lighting	SUR.:	Shielding Angle:



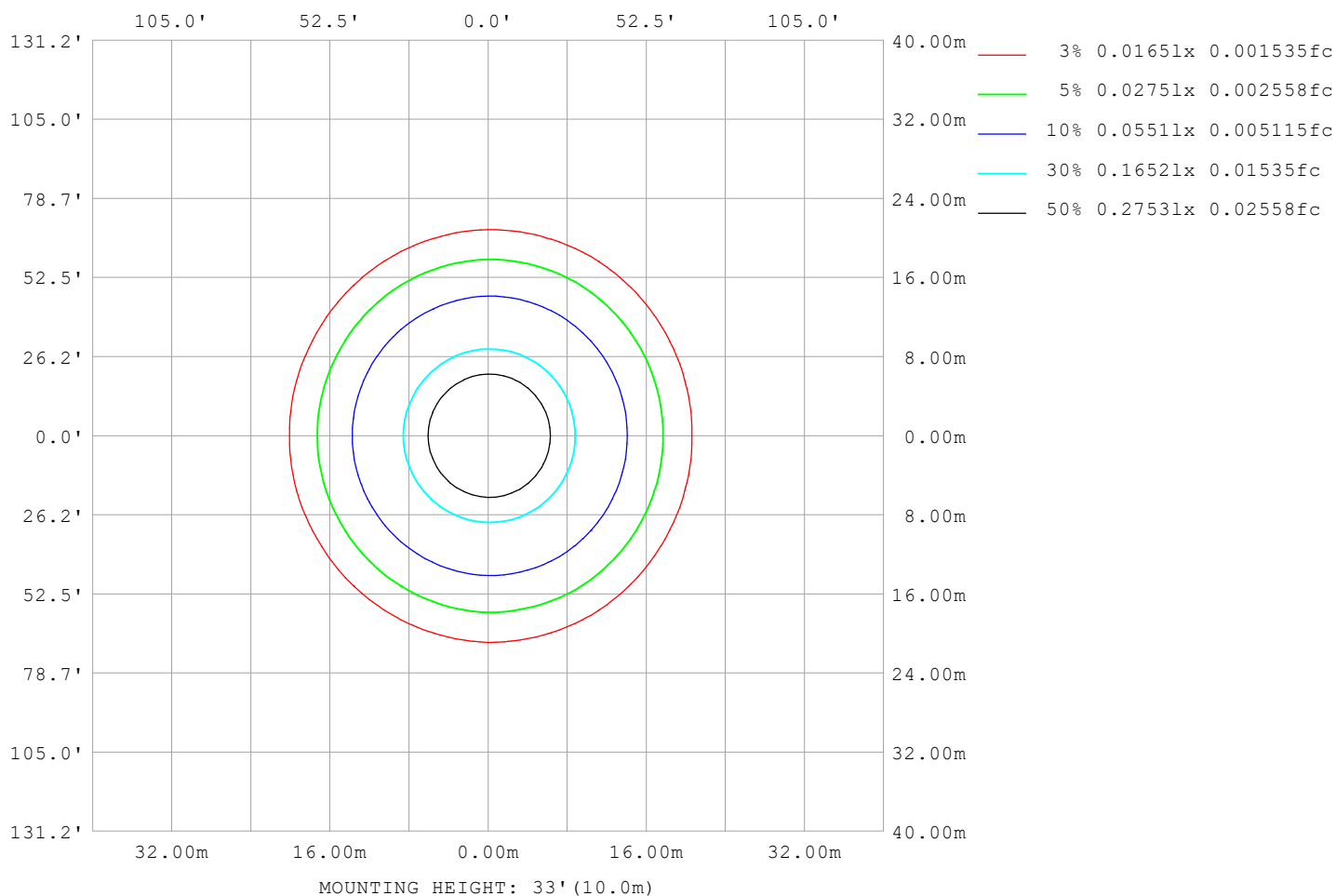
Note:The Curves indicate the illuminated area and the average illumination when the luminaire is at different distance.

C Range: 0 - 360DEG
C Interval: 30.0DEG
Test Speed: HIGH
Temperature:25.3℃
Operators:
Test Date:2025-03-11

γ Range: 0 - 180DEG
γ Interval: 1.0DEG
Test System:EVERFINE GO-2000B_V1 SYSTEM V2.00.488
Humidity:65.0%
Test Distance:6.360m [K=1.0000]
Remarks:

ISOLUX DIAGRAM

Test:U:24.00V I:0.2265A P:5.436W PF:1.000 Freq:0Hz Lamp Flux:161.305x1 lm		
NAME: SF15-24V-5050-60-RGBW-2200K-W	TYPE:	WEIGHT:
SPEC.:	DIM.: Length=1m	SERIAL No.:
MFR.: OLympia lighting	SUR.:	Shielding Angle:



C Range: 0 - 360DEG
C Interval: 30.0DEG
Test Speed: HIGH
Temperature: 25.3°C
Operators:
Test Date: 2025-03-11

γ Range: 0 - 180DEG
γ Interval: 1.0DEG
Test System: EVERFINE GO-2000B_V1 SYSTEM V2.00.488
Humidity: 65.0%
Test Distance: 6.360m [K=1.0000]
Remarks:

LED Avg.L Report

Test:U:24.00V I:0.2265A P:5.436W PF:1.000 Freq:0Hz Lamp Flux:161.305x1 lm		
NAME: SF15-24V-5050-60-RGBW-2200K-W	TYPE:	WEIGHT:
SPEC.:	DIM.: Length=1m	SERIAL No.:
MFR.: OLympia lighting	SUR.:	Shielding Angle:

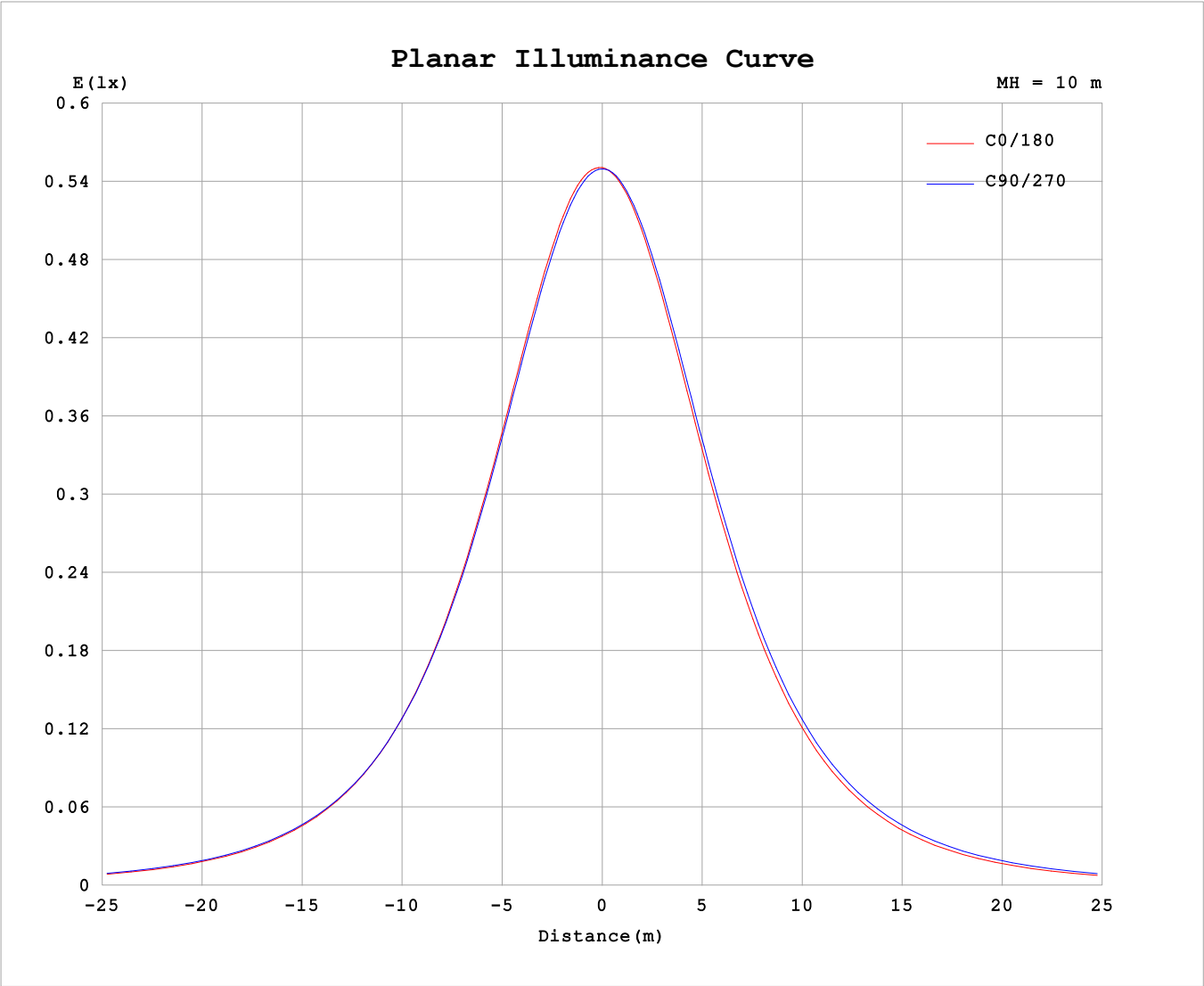
AvgL	cd/m2
L_0~180 (65) av	3747
L_0~180 (75) av	3212
L_0~180 (85) av	2040
L_90~270 (65) av	4109
L_90~270 (75) av	3947
L_90~270 (85) av	4253
L_45 (65) av	3911
L_45 (75) av	3538
L_45 (85) av	2828

Standard: GB/T 29293-2012

C Range: 0 - 360DEG
C Interval: 30.0DEG
Test Speed: HIGH
Temperature:25.3℃
Operators:
Test Date:2025-03-11

γ Range: 0 - 180DEG
γ Interval: 1.0DEG
Test System:EVERFINE GO-2000B_V1 SYSTEM V2.00.488
Humidity:65.0%
Test Distance:6.360m [K=1.0000]
Remarks:

Planar Illuminance Curve



C Range: 0 - 360DEG	γ Range: 0 - 180DEG
C Interval: 30.0DEG	γ Interval: 1.0DEG
Test Speed: HIGH	Test System:EVERFINE GO-2000B_V1 SYSTEM V2.00.488
Temperature:25.3℃	Humidity:65.0%
Operators:	Test Distance:6.360m [K=1.0000]
Test Date:2025-03-11	Remarks:

LUMINOUS DISTRIBUTION INTENSITY DATA

Test:U:24.00V I:0.2265A P:5.436W PF:1.000 Freq:0Hz Lamp Flux:161.305x1 lm		
NAME: SF15-24V-5050-60-RGBW-2200K-W	TYPE:	WEIGHT:
SPEC.:	DIM.: Length=1m	SERIAL No.:
MFR.: OLYMPIA lighting	SUR.:	Shielding Angle:

Table--1

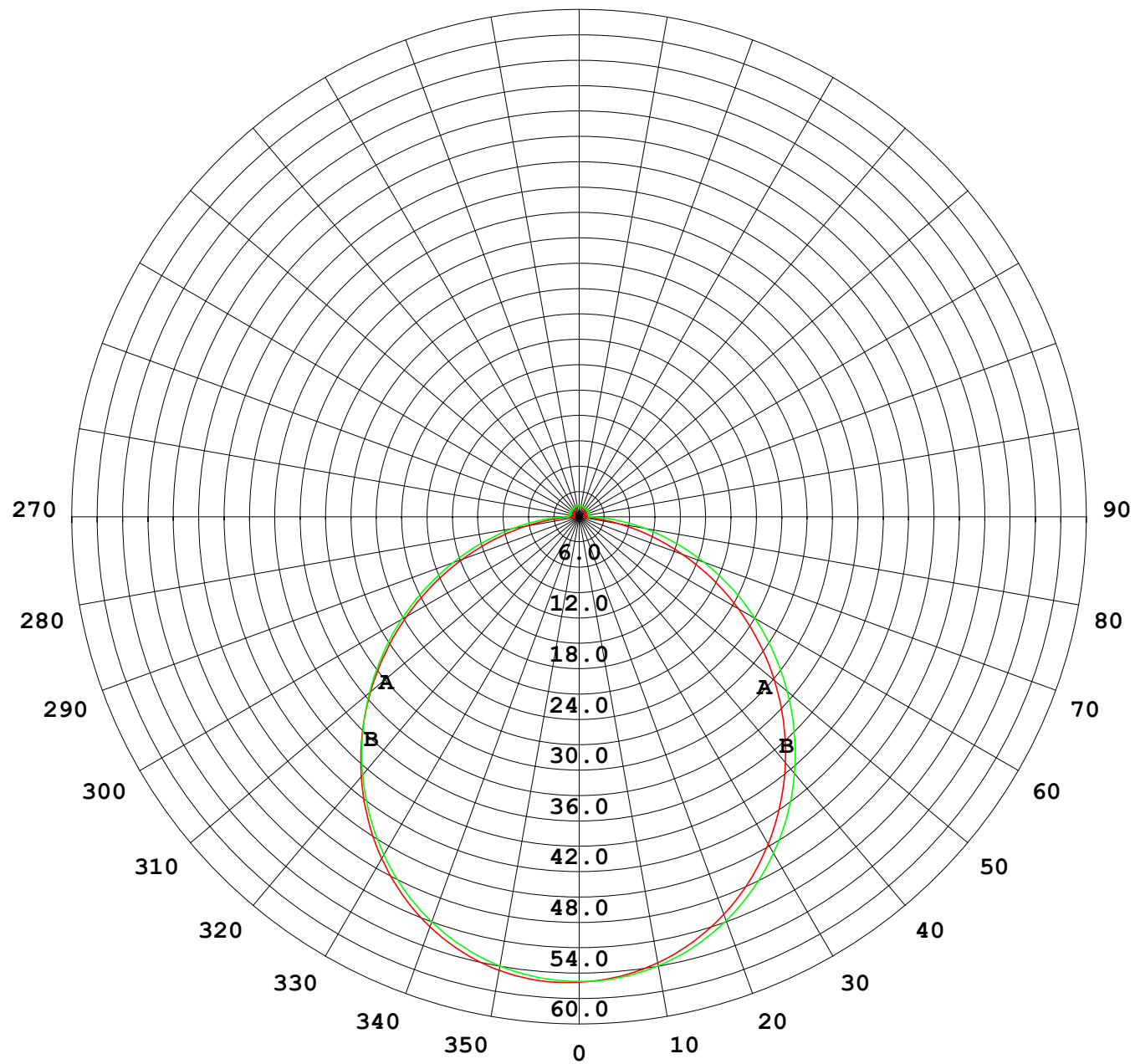
UNIT: cd

C (DEG) γ (DEG)	0	30	60	90	120	150	180	210	240	270	300	330							
0	55.0	55.0	55.0	55.0	55.0	55.0	55.0	55.0	55.0	55.0	55.0	55.0							
5	55.0	55.0	54.9	54.7	54.6	54.5	54.5	54.5	54.6	54.8	54.9	55.0							
10	54.4	54.4	54.3	54.0	53.7	53.5	53.5	53.5	53.7	54.0	54.2	54.4							
15	53.3	53.3	53.1	52.7	52.3	52.1	52.0	52.0	52.3	52.7	53.0	53.3							
20	51.6	51.6	51.4	51.0	50.5	50.1	50.0	50.1	50.5	50.9	51.4	51.6							
25	49.3	49.4	49.3	48.8	48.2	47.7	47.6	47.6	48.1	48.6	49.2	49.3							
30	46.6	46.8	46.7	46.2	45.5	44.8	44.7	44.8	45.4	46.0	46.6	46.7							
35	43.6	43.7	43.7	43.2	42.4	41.6	41.5	41.6	42.3	43.0	43.5	43.6							
40	40.1	40.2	40.4	39.9	38.9	38.1	37.9	38.1	38.9	39.6	40.2	40.2							
45	36.2	36.5	36.7	36.2	35.2	34.4	34.2	34.4	35.2	36.0	36.5	36.4							
50	32.2	32.5	32.8	32.4	31.3	30.4	30.1	30.4	31.3	32.2	32.6	32.4							
55	27.9	28.2	28.7	28.4	27.2	26.2	26.0	26.2	27.2	28.2	28.5	28.2							
60	23.5	23.9	24.5	24.3	23.1	22.0	21.7	22.0	23.1	24.0	24.3	23.8							
65	19.1	19.4	20.1	20.1	18.8	17.7	17.3	17.7	18.9	19.9	20.0	19.5							
70	14.6	15.0	15.8	15.9	14.7	13.4	13.0	13.4	14.7	15.7	15.7	15.1							
75	10.4	10.8	11.6	11.8	10.6	9.16	8.75	9.24	10.6	11.7	11.5	10.9							
80	6.33	6.79	7.57	7.92	6.57	5.15	4.75	5.28	6.69	7.82	7.49	6.86							
85	2.63	3.06	3.81	4.31	2.79	1.71	1.46	1.78	2.93	4.21	3.75	3.13							
90	0.61	0.73	1.01	1.30	1.01	0.72	0.55	0.74	1.00	1.16	1.03	0.68							
95	0.61	0.71	0.97	1.23	1.01	0.75	0.58	0.75	1.03	1.16	0.87	0.64							
100	0.64	0.74	0.98	1.21	1.03	0.80	0.62	0.78	1.07	1.19	0.90	0.64							
105	0.69	0.78	1.00	1.21	1.07	0.85	0.67	0.83	1.11	1.20	0.94	0.69							
110	0.74	0.83	1.02	1.21	1.10	0.89	0.72	0.87	1.13	1.20	0.98	0.73							
115	0.79	0.87	1.04	1.21	1.12	0.94	0.77	0.91	1.15	1.20	1.00	0.78							
120	0.84	0.92	1.06	1.21	1.15	0.96	0.83	0.95	1.16	1.20	1.03	0.82							
125	0.89	0.95	1.07	1.21	1.15	1.00	0.87	0.98	1.16	1.20	1.06	0.86							
130	0.93	0.99	1.08	1.20	1.16	1.04	0.92	1.02	1.18	1.21	1.08	0.90							
135	0.97	1.02	1.10	1.20	1.17	1.07	0.96	1.06	1.19	1.21	1.11	0.94							
140	1.01	1.05	1.12	1.22	1.19	1.10	1.01	1.09	1.21	1.22	1.15	0.98							
145	1.05	1.10	1.14	1.24	1.22	1.15	1.06	1.12	1.23	1.23	1.19	1.03							
150	1.10	1.13	1.18	1.28	1.25	1.19	1.10	1.16	1.25	1.25	1.22	1.08							
155	1.14	1.16	1.22	1.30	1.26	1.22	1.15	1.20	1.28	1.27	1.25	1.13							
160	1.20	1.20	1.24	1.30	1.27	1.26	1.20	1.23	1.30	1.29	1.28	1.18							
165	1.24	1.25	1.26	1.31	1.28	1.28	1.25	1.26	1.32	1.31	1.30	1.23							
170	1.26	1.29	1.28	1.32	1.30	1.31	1.27	1.29	1.33	1.32	1.32	1.28							
175	1.28	1.32	1.31	1.33	1.31	1.33	1.30	1.31	1.34	1.33	1.34	1.30							
180	1.29	1.32	1.33	1.34	1.34	1.34	1.30	1.32	1.34	1.34	1.35	1.33							

C Range: 0 - 360DEG
C Interval: 30.0DEG
Test Speed: HIGH
Temperature:25.3℃
Operators:
Test Date:2025-03-11

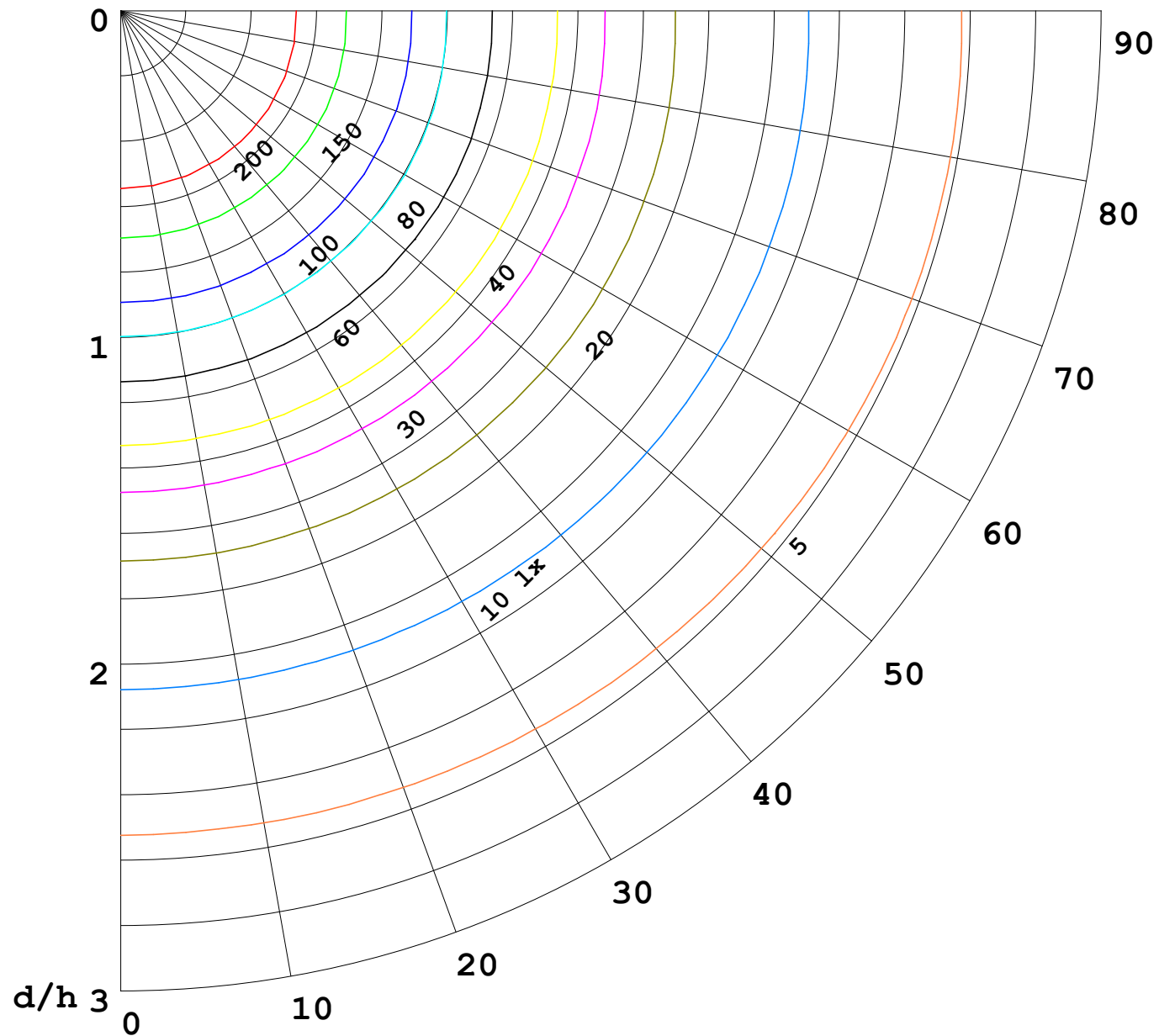
γ Range: 0 - 180DEG
γ Interval: 1.0DEG
Test System:EVERFINE GO-2000B_V1 SYSTEM V2.00.488
Humidity:65.0%
Test Distance:6.360m [K=1.0000]
Remarks:

I (cd)



1000 lm

$\kappa = 1$



F = 1000 lm
 K = 0.7
 Hcc = 0.8 m
 Hfc = 0.0 m
 Eave = 100 lx

	Pcc	Pw	Pfc
—————	70	50	30
—————	50	30	20

