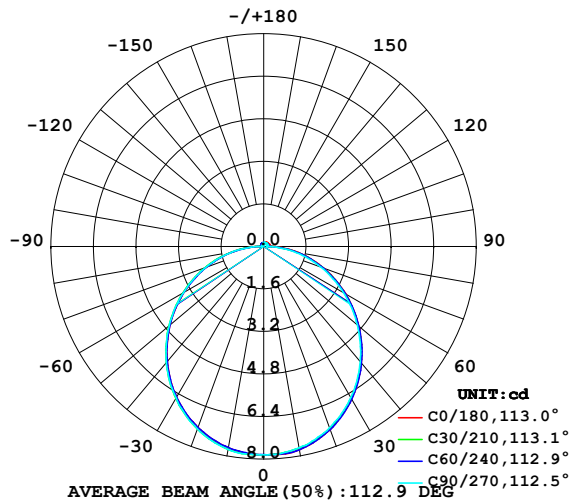


## LUMINAIRE PHOTOMETRIC TEST REPORT

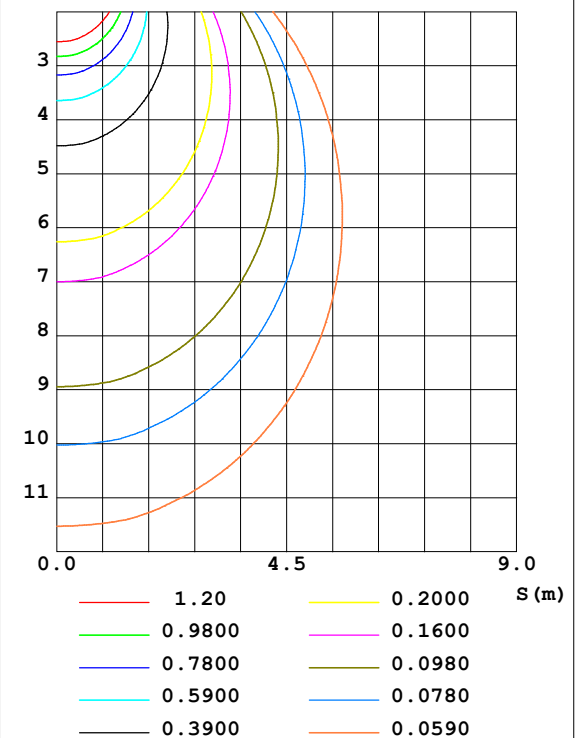
Test:U:24.00V I:0.1642A P:3.941W PF:1.000 Lamp Flux:23.9856x1 lm		
NAME: SF15-24V-5050-60-RGBW3000K	TYPE:	WEIGHT:
DIM.: Length=1m	SPEC.:	SERIAL No.:
MFR.:	SUR.:	PROTECTION ANGLE:

DATA OF LAMP		PHOTOMETRIC DATA				Eff: 6.09 lm/W
MODEL		I <sub>max</sub> (cd)	7.839	S/MH (C0/180)	1.25	
NOMINAL POWER (W)		LOR (%)	100.0	S/MH (C90/270)	1.25	
RATED VOLTAGE (V)		TOTAL FLUX (lm)	23.986	η UP, DN (C0-180)	2.1, 48.2	
NOMINAL FLUX (lm)	23.9856	CIE CLASS	DIRECT	η UP, DN (C180-360)	1.7, 48.0	
LAMPS INSIDE	1	η up (%)	3.8	CIBSE SHR NOM	1.25	
TEST VOLTAGE (V)		η down (%)	96.2	CIBSE SHR MAX	1.35	

LUMINOUS INTENSITY DISTRIBUTION DIAGRAM



C0 PLANE ISOLUX DIAGRAM (UNIT:lx)



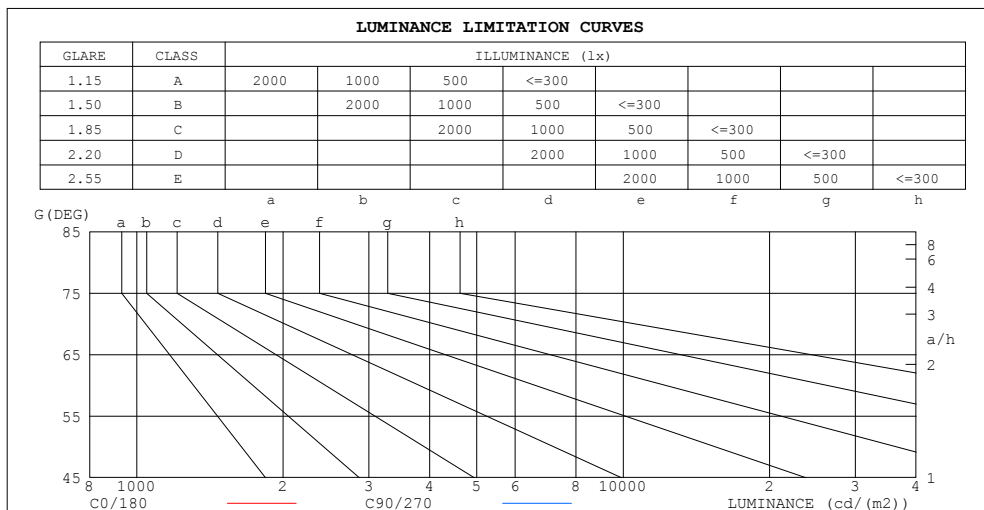
C Range: 0 - 360DEG  
C Interval: 30.0DEG  
Test Speed: HIGH  
Temperature: 25.3DEG  
Operators: LYH  
Test Date: 2024-08-03

γ Range: 0 - 180DEG  
γ Interval: 1.0DEG  
Test System: EVERFINE GO-2000B\_V1 SYSTEM V2.0.269  
Humidity: 65.0%  
Test Distance: 10.000m [K=1.0000]  
Remarks: Blue

### ZONAL FLUX DIAGRAM AND LUMINANCE LIMITATION CURVES

#### ZONAL FLUX DIAGRAM:

$\gamma$	C0	C45	C90	C135	C180	C225	C270	C315	$\gamma$	$\Phi$ zone	$\Phi$ total	%lum, lamp
10	7.763	7.739	7.686	7.719	7.686	7.716	7.746	7.725	0- 10	0.7434	0.7434	3.1,3.1
20	7.323	7.299	7.258	7.276	7.246	7.273	7.300	7.288	10- 20	2.127	2.870	12,12
30	6.620	6.607	6.559	6.581	6.547	6.575	6.590	6.598	20- 30	3.209	6.080	25.3,25.3
40	5.716	5.701	5.655	5.680	5.643	5.674	5.704	5.694	30- 40	3.853	9.932	41.4,41.4
50	4.678	4.662	4.605	4.636	4.605	4.632	4.648	4.650	40- 50	3.993	13.93	58.1,58.1
60	3.557	3.535	3.473	3.506	3.478	3.497	3.492	3.520	50- 60	3.650	17.58	73.3,73.3
70	2.419	2.382	2.293	2.338	2.322	2.326	2.330	2.370	60- 70	2.900	20.48	85.4,85.4
80	1.310	1.256	1.149	1.191	1.178	1.182	1.174	1.250	70- 80	1.880	22.36	93.2,93.2
90	0.3820	0.2671	0.1174	0.2084	0.2107	0.1821	0.0884	0.2406	80- 90	0.7270	23.08	96.2,96.2
100	0.2288	0.1672	0.1291	0.1496	0.1232	0.1144	0.0763	0.1467	90-100	0.1673	23.25	96.9,96.9
110	0.2171	0.1555	0.1291	0.1496	0.1291	0.1174	0.0763	0.1408	100-110	0.1494	23.40	97.6,97.6
120	0.2054	0.1526	0.1350	0.1496	0.1291	0.1203	0.0763	0.1438	110-120	0.1391	23.54	98.1,98.1
130	0.2053	0.1496	0.1408	0.1496	0.1350	0.1233	0.0763	0.1350	120-130	0.1256	23.66	98.7,98.7
140	0.1878	0.1496	0.1467	0.1496	0.1408	0.1291	0.0763	0.1409	130-140	0.1084	23.77	99.1,99.1
150	0.1760	0.1496	0.1526	0.1526	0.1467	0.1350	0.0938	0.1438	140-150	0.0892	23.86	99.5,99.5
160	0.1702	0.1496	0.1526	0.1526	0.1467	0.1438	0.1291	0.1438	150-160	0.0676	23.93	99.8,99.8
170	0.1584	0.1526	0.1526	0.1526	0.1467	0.1379	0.1408	0.1438	160-170	0.0420	23.97	99.9,99.9
180	0.1526	0.1526	0.1526	0.1526	0.1408	0.1408	0.1408	0.1438	170-180	0.0141	23.99	100,100
DEG	LUMINOUS INTENSITY:cd									UNIT:lm		



LUMINANCE cd/(m2)		
G (DEG)	C0/180	C90/270
85	756	573
80	656	575
75	627	581
70	615	583
65	614	593
60	619	604
55	625	614
50	633	623
45	641	633

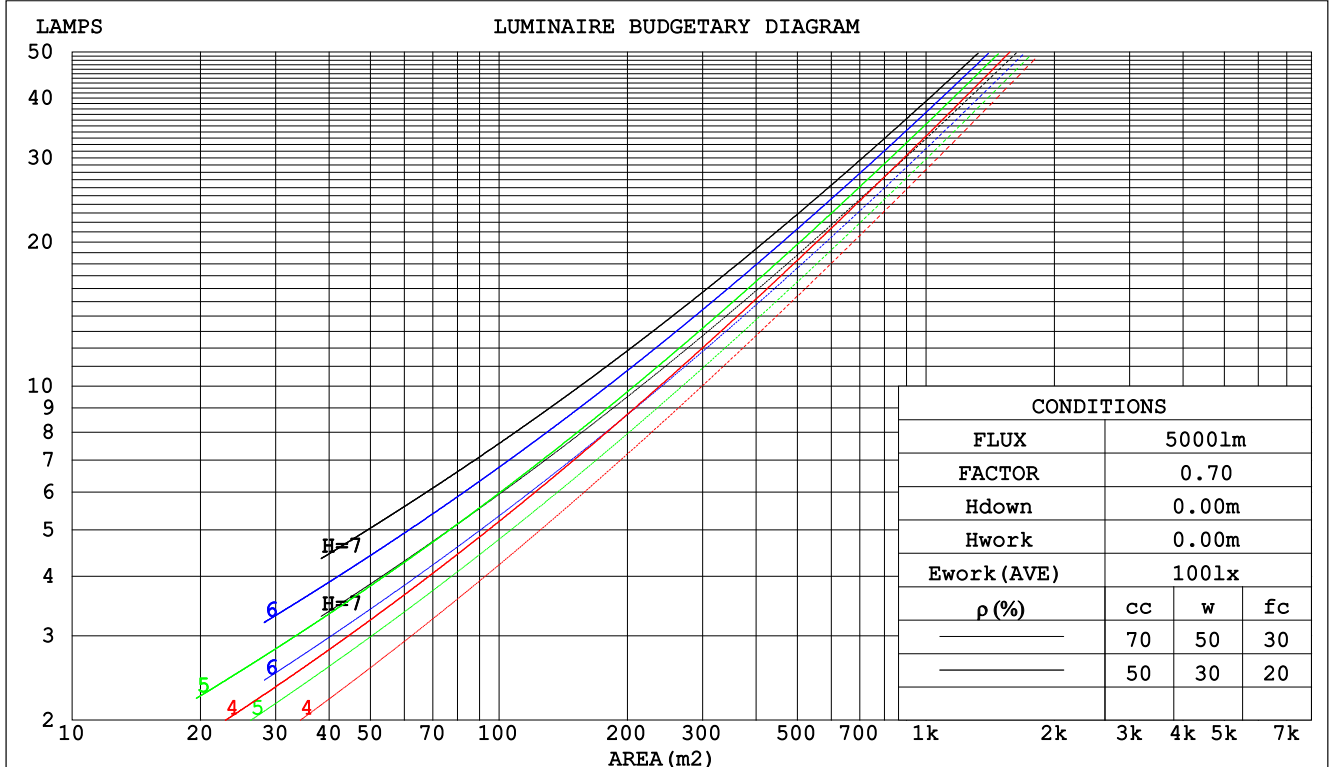
C Range: 0 - 360DEG  
C Interval: 30.0DEG  
Test Speed: HIGH  
Temperature:25.3DEG  
Operators:LYH  
Test Date:2024-08-03

$\gamma$  Range: 0 - 180DEG  
 $\gamma$  Interval: 1.0DEG  
Test System:EVERFINE GO-2000B\_V1 SYSTEM V2.0.269  
Humidity:65.0%  
Test Distance:10.000m [K=1.0000]  
Remarks: Blue

## CU AND LUMINAIRE BUDGETARY ESTIMATE DIAGRAM

Test:U:24.00V I:0.1642A P:3.941W PF:1.000 Lamp Flux:23.9856x1 lm		
NAME: SF15-24V-5050-60-RGBW3000K	TYPE:	WEIGHT:
DIM.: Length=1m	SPEC.:	SERIAL No.:
MFR.:	SUR.:	PROTECTION ANGLE:

pcc	80%			70%			50%			30%			10%			0
pw	50%	30%	10%	50%	30%	10%	50%	30%	10%	50%	30%	10%	50%	30%	10%	0
pfc	20%			20%			20%			20%			20%			0
RCR	RCR:Room Cavity Ratio						Coefficients of Utilization(CU)									
0.0	1.18	1.18	1.18	1.15	1.15	1.15	1.09	1.09	1.09	1.04	1.04	1.04	.99	.99	.99	.96
1.0	1.02	.98	.93	.99	.95	.92	.94	.91	.88	.90	.87	.85	.86	.84	.81	.79
2.0	.89	.81	.76	.86	.80	.74	.82	.77	.72	.78	.74	.70	.75	.71	.68	.65
3.0	.78	.69	.62	.76	.68	.62	.72	.65	.60	.69	.63	.59	.66	.61	.57	.55
4.0	.69	.60	.53	.67	.59	.52	.64	.57	.51	.61	.55	.50	.59	.53	.49	.46
5.0	.61	.52	.45	.60	.51	.45	.57	.50	.44	.55	.48	.43	.53	.47	.42	.40
6.0	.55	.46	.39	.54	.45	.39	.52	.44	.38	.50	.43	.38	.48	.42	.37	.35
7.0	.50	.41	.35	.49	.40	.34	.47	.39	.34	.45	.38	.33	.43	.38	.33	.31
8.0	.45	.37	.31	.45	.36	.31	.43	.36	.30	.41	.35	.30	.40	.34	.29	.28
9.0	.42	.33	.28	.41	.33	.28	.39	.32	.27	.38	.32	.27	.37	.31	.27	.25
10.0	.38	.30	.25	.38	.30	.25	.37	.30	.25	.35	.29	.24	.34	.28	.24	.22



C Range: 0 - 360DEG  
C Interval: 30.0DEG  
Test Speed: HIGH  
Temperature:25.3DEG  
Operators:LYH  
Test Date:2024-08-03

γ Range: 0 - 180DEG  
γ Interval: 1.0DEG  
Test System:EVERFINE GO-2000B\_V1 SYSTEM V2.0.269  
Humidity:65.0%  
Test Distance:10.000m [K=1.0000]  
Remarks: Blue

## WEC AND CCEC

Test:U:24.00V I:0.1642A P:3.941W PF:1.000 Lamp Flux:23.9856x1 lm								
NAME: SF15-24V-5050-60-RGBW3000K				TYPE:			WEIGHT:	
DIM.: Length=1m				SPEC.:			SERIAL No.:	
MFR.:				SUR.:			PROTECTION ANGLE:	

pcc	80%			70%			50%			30%			10%			0
pw	50%	30%	10%	50%	30%	10%	50%	30%	10%	50%	30%	10%	50%	30%	10%	0
pfc	20%			20%			20%			20%			20%			0
RCR	RCR:Room Cavity Ratio						Wall Exitance Coefficients(WEC)									
0.0																
1.0	.326	.186	.059	.318	.181	.058	.303	.174	.055	.288	.166	.053	.275	.160	.051	
2.0	.301	.165	.051	.294	.162	.050	.280	.156	.048	.267	.150	.047	.256	.145	.046	
3.0	.276	.147	.044	.269	.144	.043	.257	.139	.042	.246	.135	.041	.235	.130	.040	
4.0	.253	.131	.039	.247	.129	.038	.236	.125	.037	.226	.121	.037	.217	.118	.036	
5.0	.233	.119	.034	.228	.117	.034	.218	.113	.033	.209	.110	.033	.200	.107	.032	
6.0	.215	.108	.031	.211	.106	.031	.202	.103	.030	.194	.101	.030	.186	.098	.029	
7.0	.200	.099	.028	.196	.098	.028	.188	.095	.027	.180	.093	.027	.174	.090	.026	
8.0	.186	.091	.026	.183	.090	.025	.176	.088	.025	.169	.086	.025	.163	.083	.024	
9.0	.175	.084	.024	.171	.083	.023	.165	.081	.023	.159	.079	.023	.153	.078	.022	
10.0	.164	.079	.022	.161	.078	.022	.155	.076	.021	.149	.074	.021	.144	.073	.021	

pcc	80%			70%			50%			30%			10%			0
pw	50%	30%	10%	50%	30%	10%	50%	30%	10%	50%	30%	10%	50%	30%	10%	0
pfc	20%			20%			20%			20%			20%			0
RCR	RCR:Room Cavity Ratio			Ceiling Cavity Exitance Coefficients(CCEC)												
0.0	.219	.219	.219	.187	.187	.187	.128	.128	.128	.073	.073	.073	.023	.023	.023	
1.0	.210	.185	.162	.180	.159	.139	.123	.109	.096	.071	.063	.056	.023	.020	.018	
2.0	.203	.161	.126	.174	.139	.109	.119	.096	.076	.069	.056	.045	.022	.018	.015	
3.0	.195	.144	.103	.167	.124	.089	.115	.086	.062	.066	.050	.037	.021	.016	.012	
4.0	.187	.130	.087	.161	.113	.076	.110	.079	.053	.064	.046	.032	.021	.015	.010	
5.0	.180	.120	.076	.154	.104	.066	.106	.073	.047	.062	.043	.028	.020	.014	.009	
6.0	.172	.112	.068	.148	.097	.060	.102	.068	.042	.059	.040	.025	.019	.013	.008	
7.0	.166	.105	.063	.142	.091	.055	.098	.064	.039	.057	.038	.023	.018	.012	.008	
8.0	.159	.099	.058	.137	.086	.051	.095	.060	.036	.055	.036	.021	.018	.012	.007	
9.0	.153	.094	.055	.132	.082	.048	.091	.058	.034	.053	.034	.020	.017	.011	.007	
10.0	.147	.090	.052	.127	.078	.046	.088	.055	.032	.051	.033	.019	.017	.011	.006	

C Range: 0 - 360DEG  
 C Interval: 30.0DEG  
 Test Speed: HIGH  
 Temperature:25.3DEG  
 Operators:LYH  
 Test Date:2024-08-03

γ Range: 0 - 180DEG  
 γ Interval: 1.0DEG  
 Test System:EVERFINE GO-2000B\_V1 SYSTEM V2.0.269  
 Humidity:65.0%  
 Test Distance:10.000m [K=1.0000]  
 Remarks: Blue

## Uncorrected UGR Table

Test:U:24.00V I:0.1642A P:3.941W PF:1.000 Lamp Flux:23.9856x1 lm											
NAME: SF15-24V-5050-60-RGBW3000K						TYPE:		WEIGHT:			
DIM.: Length=1m						SPEC.:		SERIAL No.:			
MFR.:						SUR.:		PROTECTION ANGLE:			
ceiling/cavity	0.7	0.7	0.5	0.5	0.3	0.7	0.7	0.5	0.5	0.3	
walls	0.5	0.3	0.5	0.3	0.3	0.5	0.3	0.5	0.3	0.3	
working plane	0.2	0.2	0.2	0.2	0.2	0.2	0.2	0.2	0.2	0.2	
Room dimensions	Viewed crosswise					Viewed endwise					
x = 2H y = 2H	11.0	12.5	11.3	12.8	13.0	11.0	12.5	11.3	12.7	13.0	
	3H	12.7	14.1	13.1	14.4	14.7	12.6	14.0	13.0	14.3	14.6
	4H	13.5	14.8	13.9	15.2	15.5	13.4	14.7	13.7	15.0	15.3
	6H	14.2	15.5	14.6	15.8	16.2	14.0	15.2	14.4	15.5	15.9
	8H	14.5	15.7	14.9	16.1	16.4	14.2	15.4	14.6	15.8	16.1
	12H	14.8	15.9	15.2	16.3	16.7	14.4	15.5	14.8	15.9	16.3
4H	2H	11.6	13.0	12.0	13.3	13.6	11.6	12.9	12.0	13.2	13.6
	3H	13.6	14.7	14.0	15.1	15.5	13.5	14.6	13.9	15.0	15.4
	4H	14.5	15.6	14.9	15.9	16.4	14.4	15.4	14.8	15.8	16.2
	6H	15.4	16.3	15.8	16.7	17.2	15.1	16.1	15.6	16.5	17.0
	8H	15.7	16.6	16.2	17.0	17.5	15.5	16.3	15.9	16.8	17.2
	12H	16.1	16.9	16.5	17.3	17.8	15.7	16.5	16.2	17.0	17.4
8H	4H	14.8	15.7	15.3	16.2	16.6	14.7	15.6	15.2	16.1	16.5
	6H	15.9	16.6	16.4	17.1	17.6	15.7	16.4	16.2	16.9	17.4
	8H	16.4	17.0	16.9	17.5	18.1	16.2	16.8	16.7	17.3	17.8
	12H	16.8	17.4	17.4	17.9	18.5	16.5	17.1	17.1	17.6	18.1
12H	4H	14.9	15.7	15.4	16.1	16.6	14.8	15.6	15.3	16.0	16.5
	6H	16.0	16.6	16.5	17.1	17.7	15.8	16.5	16.3	17.0	17.5
	8H	16.5	17.1	17.1	17.6	18.2	16.3	16.9	16.9	17.4	18.0
Variations with the observer position at spacings:											
S = 1.0H	+ 0.1 / - 0.2					+ 0.1 / - 0.2					
1.5H	+ 0.2 / - 0.3					+ 0.2 / - 0.3					
2.0H	+ 0.1 / - 0.3					+ 0.1 / - 0.3					

CIE Pub.117 Corrected 23.99 lm Total Lamp Luminous Flux. (8log(F/F0) = -13.0)

C Range: 0 - 360DEG  
 C Interval: 30.0DEG  
 Test Speed: HIGH  
 Temperature: 25.3DEG  
 Operators: LYH  
 Test Date: 2024-08-03

$\gamma$  Range: 0 - 180DEG  
 $\gamma$  Interval: 1.0DEG  
 Test System: EVERFINE GO-2000B\_V1 SYSTEM V2.0.269  
 Humidity: 65.0%  
 Test Distance: 10.000m [K=1.0000]  
 Remarks: Blue

## UTILIZATION FACTORS TABLE

Test:U:24.00V I:0.1642A P:3.941W PF:1.000 Lamp Flux:23.9856x1 lm		
NAME: SF15-24V-5050-60-RGBW3000K	TYPE:	WEIGHT:
DIM.: Length=1m	SPEC.:	SERIAL No.:
MFR.:	SUR.:	PROTECTION ANGLE:

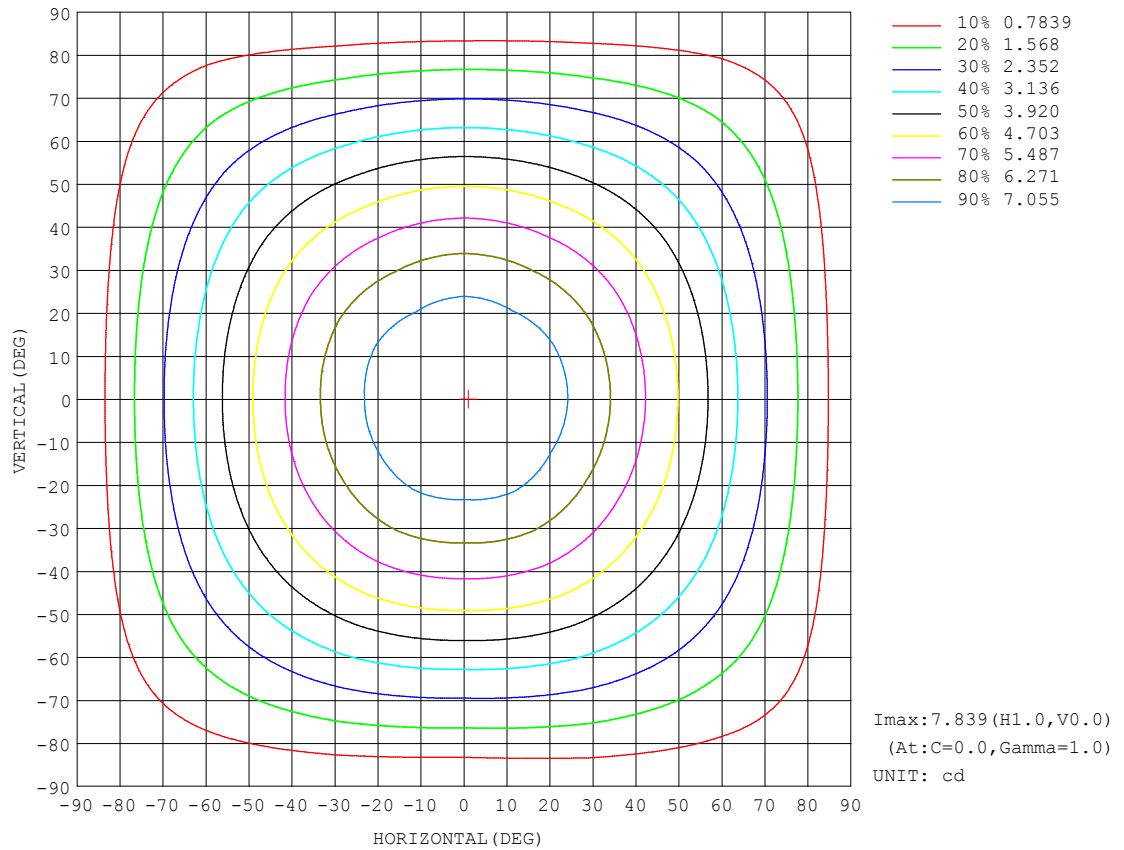
REFLECTANCE										
Ceiling	0.8	0.8	0.8	0.7	0.7	0.7	0.5	0.5	0.5	0
Walls	0.7	0.5	0.3	0.7	0.5	0.3	0.7	0.5	0.3	0
Working plane	0.2	0.2	0.2	0.2	0.2	0.2	0.2	0.2	0.2	0
ROOM INDEX	UTILIZATION FACTORS (PERCENT) $k(RI) \times RCR = 5$									
$k = 0.60$	56	44	37	55	44	37	53	43	36	30
0.80	65	54	46	64	53	46	62	52	45	38
1.00	74	62	55	72	62	54	70	63	54	46
1.25	81	70	62	79	69	62	76	67	61	53
1.50	86	75	68	84	74	67	80	72	66	58
2.00	93	84	77	91	82	76	87	80	74	65
2.50	97	88	82	94	87	81	90	84	79	69
3.00	100	93	87	98	91	86	93	88	83	73
4.00	104	98	93	102	96	92	97	92	88	78
5.00	107	102	97	104	99	95	99	95	92	81
ROOM INDEX	UF(total)									Direct
According to DIN EN 13032-2 2004			Suspended					SHRNOM = 1.25		

C Range: 0 - 360DEG  
 C Interval: 30.0DEG  
 Test Speed: HIGH  
 Temperature: 25.3DEG  
 Operators: LYH  
 Test Date: 2024-08-03

$\gamma$  Range: 0 - 180DEG  
 $\gamma$  Interval: 1.0DEG  
 Test System: EVERFINE GO-2000B\_V1 SYSTEM V2.0.269  
 Humidity: 65.0%  
 Test Distance: 10.000m [K=1.0000]  
 Remarks: Blue

## ISOCANDELA DIAGRAM

Test:U:24.00V I:0.1642A P:3.941W PF:1.000 Lamp Flux:23.9856x1 lm		
NAME: SF15-24V-5050-60-RGBW3000K	TYPE:	WEIGHT:
DIM.: Length=1m	SPEC.:	SERIAL No.:
MFR.:	SUR.:	PROTECTION ANGLE:

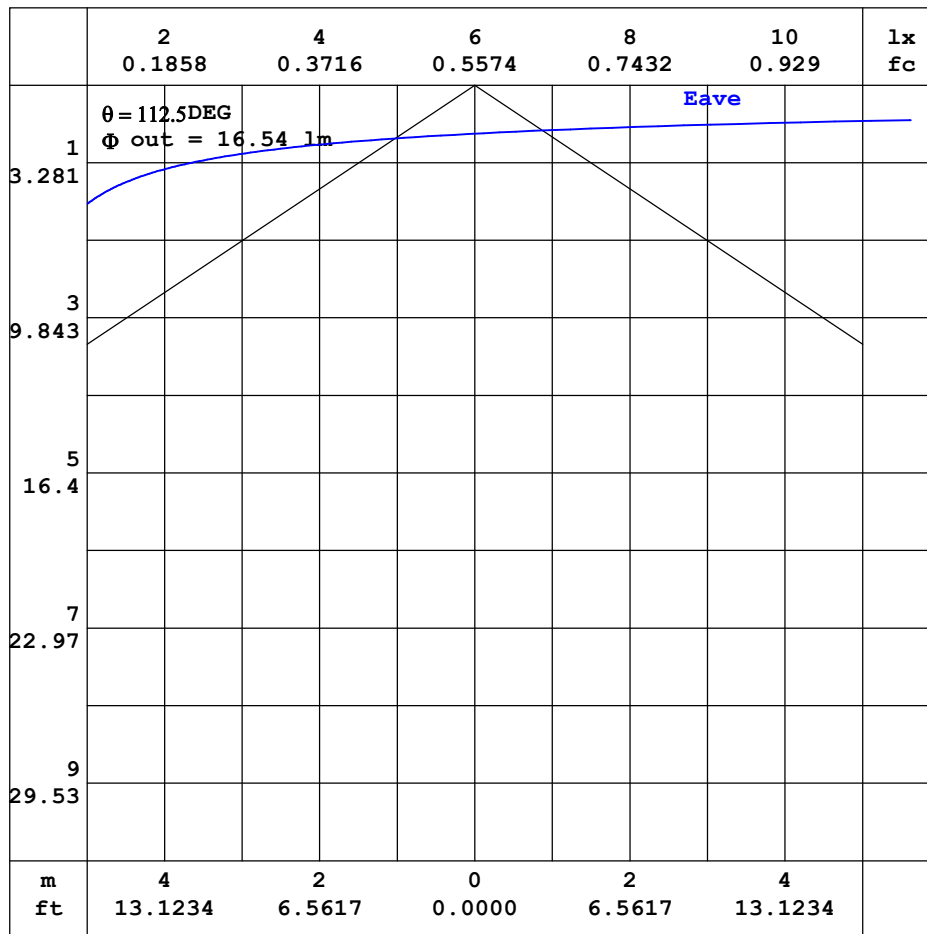


C Range: 0 - 360DEG  
C Interval: 30.0DEG  
Test Speed: HIGH  
Temperature: 25.3DEG  
Operators: LYH  
Test Date: 2024-08-03

$\gamma$  Range: 0 - 180DEG  
 $\gamma$  Interval: 1.0DEG  
Test System: EVERFINE GO-2000B\_V1 SYSTEM V2.0.269  
Humidity: 65.0%  
Test Distance: 10.000m [K=1.0000]  
Remarks: Blue

### AAI CURVES

Test:U:24.00V I:0.1642A P:3.941W PF:1.000 Lamp Flux:23.9856x1 lm		
NAME: SF15-24V-5050-60-RGBW3000K	TYPE:	WEIGHT:
DIM.: Length=1m	SPEC.:	SERIAL No.:
MFR.:	SUR.:	PROTECTION ANGLE:



Note: The Curves indicate the illuminated area and the average illuminance when the luminaire is at different distance.

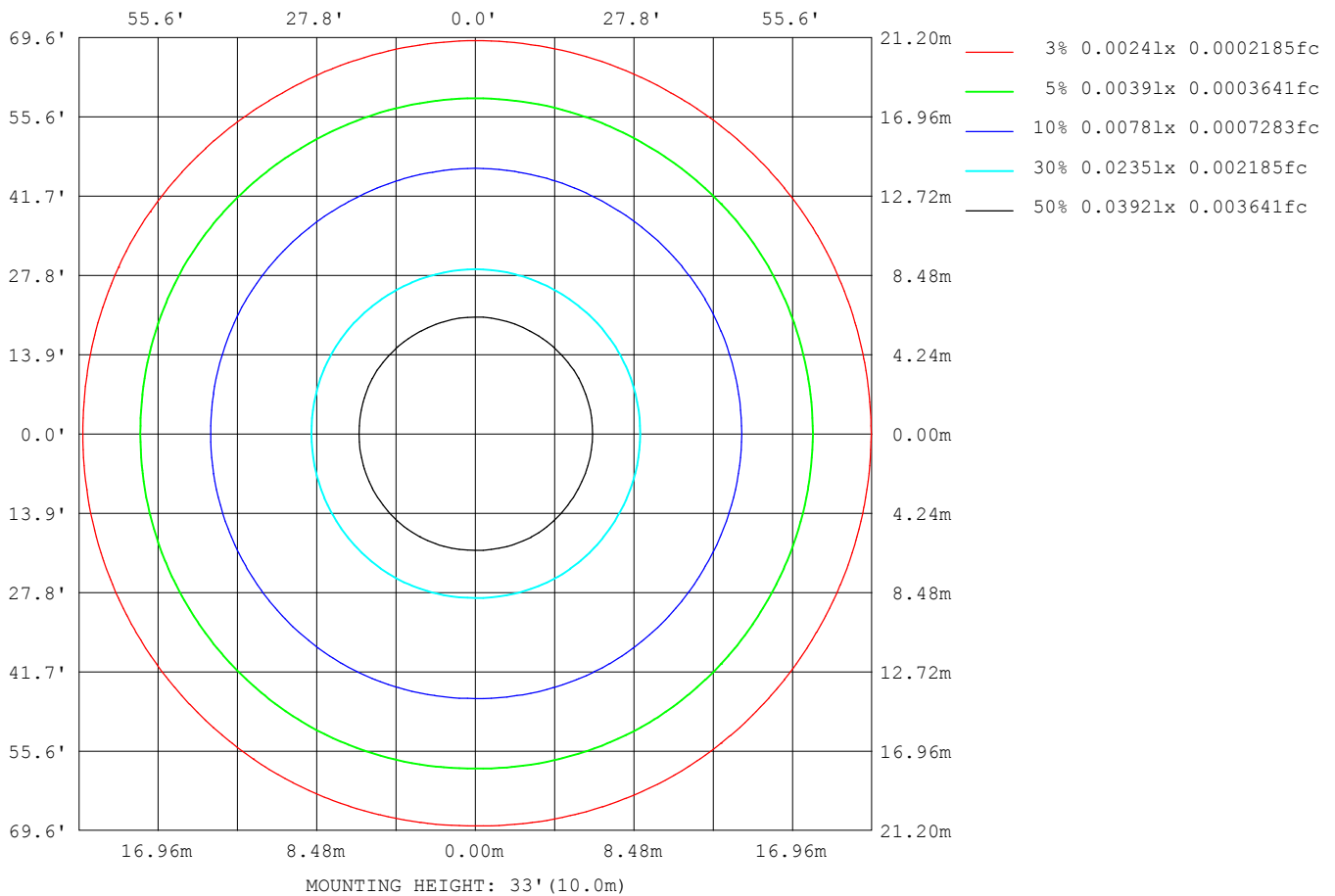
C Range: 0 - 360DEG  
 C Interval: 30.0DEG  
 Test Speed: HIGH  
 Temperature: 25.3DEG  
 Operators: LYH  
 Test Date: 2024-08-03

$\gamma$  Range: 0 - 180DEG  
 $\gamma$  Interval: 1.0DEG  
 Test System: EVERFINE GO-2000B\_V1 SYSTEM V2.0.269  
 Humidity: 65.0%  
 Test Distance: 10.000m [K=1.0000]  
 Remarks: Blue



## ISOLUX DIAGRAM

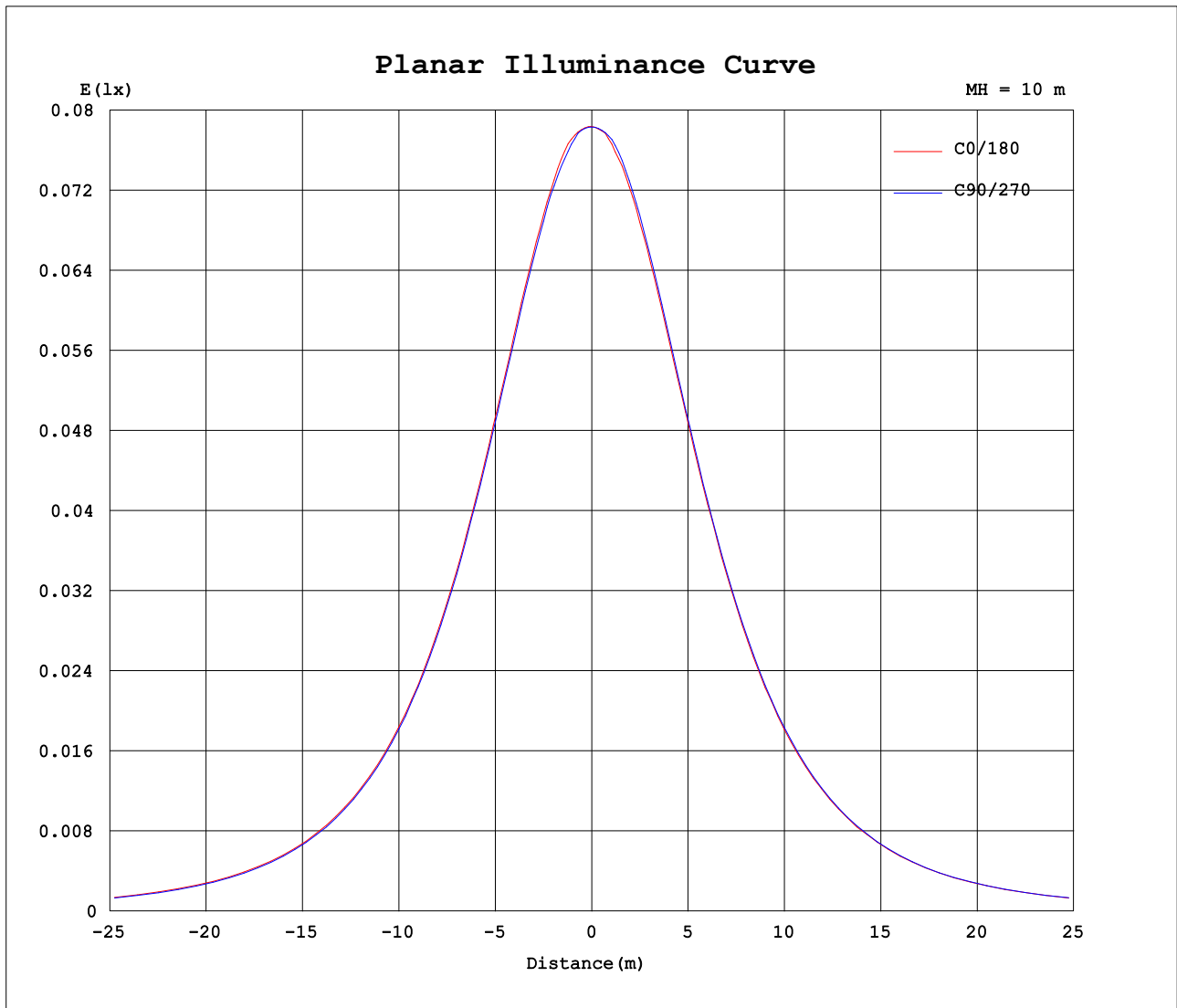
Test:U:24.00V I:0.1642A P:3.941W PF:1.000 Lamp Flux:23.9856x1 lm		
NAME: SF15-24V-5050-60-RGBW3000K	TYPE:	WEIGHT:
DIM.: Length=1m	SPEC.:	SERIAL No.:
MFR.:	SUR.:	PROTECTION ANGLE:



C Range: 0 - 360DEG  
C Interval: 30.0DEG  
Test Speed: HIGH  
Temperature: 25.3DEG  
Operators: LYH  
Test Date: 2024-08-03

$\gamma$  Range: 0 - 180DEG  
 $\gamma$  Interval: 1.0DEG  
Test System: EVERFINE GO-2000B\_V1 SYSTEM V2.0.269  
Humidity: 65.0%  
Test Distance: 10.000m [K=1.0000]  
Remarks: Blue

## Planar Illuminance Curve



C Range: 0 - 360DEG  
C Interval: 30.0DEG  
Test Speed: HIGH  
Temperature: 25.3DEG  
Operators: LYH  
Test Date: 2024-08-03

$\gamma$  Range: 0 - 180DEG  
 $\gamma$  Interval: 1.0DEG  
Test System: EVERFINE GO-2000B\_V1 SYSTEM V2.0.269  
Humidity: 65.0%  
Test Distance: 10.000m [K=1.0000]  
Remarks: Blue

## LUMINOUS DISTRIBUTION INTENSITY DATA

Test:U:24.00V I:0.1642A P:3.941W PF:1.000 Lamp Flux:23.9856x1 lm		
NAME: SF15-24V-5050-60-RGBW3000K	TYPE:	WEIGHT:
DIM.: Length=1m	SPEC.:	SERIAL No.:
MFR.:	SUR.:	PROTECTION ANGLE:

Table--1

UNIT: cd

C (DEG) γ (DEG)	0	30	60	90	120	150	180	210	240	270	300	330						
0	7.84	7.83	7.83	7.83	7.83	7.83	7.84	7.83	7.83	7.83	7.83	7.83						
5	7.84	7.81	7.83	7.80	7.83	7.80	7.80	7.83	7.79	7.83	7.80	7.83						
10	7.76	7.72	7.76	7.69	7.75	7.69	7.69	7.75	7.68	7.75	7.69	7.76						
15	7.57	7.53	7.58	7.51	7.56	7.52	7.50	7.56	7.49	7.56	7.52	7.58						
20	7.32	7.28	7.32	7.26	7.30	7.25	7.25	7.30	7.25	7.30	7.25	7.32						
25	7.00	6.97	7.01	6.94	6.98	6.94	6.93	6.98	6.92	6.98	6.95	6.99						
30	6.62	6.58	6.63	6.56	6.60	6.56	6.55	6.60	6.55	6.59	6.57	6.63						
35	6.19	6.15	6.20	6.12	6.17	6.13	6.13	6.18	6.12	6.18	6.14	6.20						
40	5.72	5.68	5.72	5.66	5.70	5.66	5.64	5.70	5.65	5.70	5.67	5.72						
45	5.21	5.17	5.22	5.14	5.19	5.15	5.13	5.19	5.14	5.19	5.16	5.21						
50	4.68	4.65	4.68	4.60	4.65	4.62	4.60	4.65	4.61	4.65	4.62	4.68						
55	4.12	4.08	4.11	4.05	4.10	4.07	4.05	4.10	4.04	4.08	4.07	4.13						
60	3.56	3.53	3.55	3.47	3.52	3.50	3.48	3.52	3.48	3.49	3.49	3.55						
65	2.98	2.96	2.96	2.88	2.93	2.92	2.90	2.94	2.88	2.92	2.92	2.98						
70	2.42	2.38	2.38	2.29	2.35	2.33	2.32	2.36	2.29	2.33	2.33	2.41						
75	1.87	1.82	1.83	1.73	1.78	1.76	1.76	1.80	1.72	1.76	1.77	1.86						
80	1.31	1.25	1.26	1.15	1.20	1.18	1.18	1.22	1.14	1.17	1.20	1.30						
85	0.76	0.70	0.70	0.57	0.64	0.62	0.61	0.65	0.59	0.59	0.63	0.74						
90	0.38	0.29	0.25	0.12	0.20	0.22	0.21	0.25	0.12	0.09	0.16	0.32						
95	0.23	0.16	0.18	0.12	0.15	0.15	0.12	0.13	0.11	0.08	0.12	0.18						
100	0.23	0.15	0.18	0.13	0.15	0.15	0.12	0.12	0.11	0.08	0.12	0.18						
105	0.22	0.15	0.17	0.13	0.15	0.15	0.13	0.12	0.11	0.08	0.12	0.16						
110	0.22	0.15	0.16	0.13	0.15	0.15	0.13	0.12	0.11	0.08	0.12	0.16						
115	0.22	0.15	0.16	0.13	0.15	0.15	0.13	0.12	0.12	0.08	0.12	0.16						
120	0.21	0.15	0.15	0.13	0.15	0.15	0.13	0.12	0.12	0.08	0.12	0.16						
125	0.20	0.15	0.15	0.14	0.15	0.15	0.13	0.12	0.12	0.08	0.13	0.16						
130	0.21	0.15	0.15	0.14	0.15	0.15	0.13	0.12	0.12	0.08	0.13	0.14						
135	0.19	0.15	0.15	0.14	0.15	0.15	0.14	0.12	0.13	0.08	0.13	0.14						
140	0.19	0.15	0.15	0.15	0.15	0.15	0.14	0.12	0.13	0.08	0.13	0.15						
145	0.18	0.15	0.15	0.15	0.15	0.15	0.14	0.12	0.14	0.08	0.14	0.15						
150	0.18	0.15	0.15	0.15	0.15	0.15	0.15	0.12	0.15	0.09	0.14	0.15						
155	0.18	0.15	0.15	0.15	0.15	0.15	0.15	0.13	0.15	0.10	0.14	0.15						
160	0.17	0.15	0.15	0.15	0.15	0.15	0.15	0.13	0.15	0.13	0.14	0.15						
165	0.16	0.15	0.15	0.15	0.15	0.15	0.15	0.13	0.15	0.13	0.14	0.15						
170	0.16	0.15	0.15	0.15	0.15	0.15	0.15	0.13	0.14	0.14	0.14	0.15						
175	0.15	0.15	0.15	0.15	0.15	0.15	0.15	0.13	0.14	0.14	0.14	0.15						
180	0.15	0.15	0.15	0.15	0.15	0.15	0.14	0.14	0.14	0.14	0.14	0.15						

C Range: 0 - 360DEG  
C Interval: 30.0DEG  
Test Speed: HIGH  
Temperature:25.3DEG  
Operators:LYH  
Test Date:2024-08-03

γ Range: 0 - 180DEG  
γ Interval: 1.0DEG  
Test System:EVERFINE GO-2000B\_V1 SYSTEM V2.0.269  
Humidity:65.0%  
Test Distance:10.000m [K=1.0000]  
Remarks: Blue

Photometric Data Table [cd]

G/C	0.0	30.0	60.0	90.0	120.0	150.0	180.0	210.0	240.0	270.0
0.0	7.839	7.833	7.827	7.833	7.827	7.833	7.839	7.833	7.827	7.833
3.0	7.839	7.822	7.833	7.833	7.833	7.827	7.827	7.833	7.827	7.833
6.0	7.839	7.786	7.833	7.786	7.833	7.786	7.786	7.833	7.774	7.833
9.0	7.792	7.722	7.787	7.716	7.781	7.727	7.721	7.775	7.716	7.781
12.0	7.687	7.639	7.699	7.639	7.681	7.633	7.622	7.681	7.627	7.681
15.0	7.570	7.528	7.576	7.510	7.558	7.516	7.498	7.558	7.492	7.564
18.0	7.429	7.387	7.435	7.369	7.411	7.358	7.357	7.417	7.346	7.417
21.0	7.259	7.217	7.271	7.193	7.247	7.199	7.181	7.247	7.181	7.241
24.0	7.065	7.029	7.077	7.011	7.054	7.005	6.993	7.048	6.993	7.048
27.0	6.860	6.812	6.860	6.788	6.843	6.788	6.782	6.842	6.782	6.836
30.0	6.620	6.583	6.631	6.559	6.602	6.559	6.547	6.602	6.547	6.590
33.0	6.373	6.330	6.373	6.307	6.356	6.307	6.307	6.355	6.295	6.344
36.0	6.097	6.060	6.109	6.031	6.080	6.049	6.031	6.085	6.031	6.080
39.0	5.816	5.779	5.822	5.749	5.793	5.755	5.743	5.792	5.743	5.798
42.0	5.511	5.480	5.523	5.462	5.493	5.462	5.444	5.499	5.462	5.499
45.0	5.212	5.169	5.217	5.145	5.188	5.151	5.133	5.188	5.139	5.188
48.0	4.889	4.857	4.895	4.822	4.877	4.834	4.822	4.877	4.822	4.871
51.0	4.566	4.535	4.566	4.488	4.543	4.517	4.493	4.548	4.493	4.537
54.0	4.238	4.200	4.232	4.153	4.203	4.177	4.153	4.208	4.153	4.202
57.0	3.897	3.866	3.886	3.813	3.862	3.825	3.824	3.868	3.813	3.850
60.0	3.557	3.525	3.545	3.473	3.516	3.496	3.478	3.516	3.478	3.492
63.0	3.211	3.179	3.193	3.115	3.170	3.138	3.126	3.175	3.114	3.152
66.0	2.871	2.839	2.841	2.763	2.818	2.792	2.786	2.823	2.762	2.806
69.0	2.536	2.493	2.507	2.411	2.466	2.452	2.440	2.477	2.410	2.442
72.0	2.190	2.146	2.155	2.058	2.114	2.088	2.088	2.125	2.064	2.096
75.0	1.867	1.824	1.832	1.730	1.779	1.759	1.759	1.797	1.724	1.755
78.0	1.533	1.478	1.492	1.378	1.433	1.431	1.407	1.439	1.378	1.403
81.0	1.204	1.143	1.145	1.049	1.087	1.067	1.067	1.104	1.031	1.063
84.0	0.8639	0.8087	0.8111	0.6913	0.7466	0.7266	0.7261	0.7639	0.6853	0.6994
87.0	0.5761	0.4923	0.4765	0.3570	0.4120	0.4043	0.4100	0.4409	0.3451	0.3765
90.0	0.3820	0.2871	0.2471	0.1174	0.2001	0.2168	0.2107	0.2469	0.1173	0.0884
93.0	0.2584	0.1701	0.1820	0.1232	0.1468	0.1526	0.1232	0.1410	0.1056	0.0763
96.0	0.2405	0.1526	0.1819	0.1232	0.1467	0.1526	0.1232	0.1233	0.1056	0.0763
99.0	0.2288	0.1526	0.1761	0.1291	0.1467	0.1526	0.1232	0.1232	0.1056	0.0763
102.0	0.2288	0.1526	0.1702	0.1291	0.1467	0.1526	0.1233	0.1232	0.1056	0.0763
105.0	0.2230	0.1526	0.1702	0.1291	0.1467	0.1526	0.1291	0.1232	0.1115	0.0763
108.0	0.2230	0.1526	0.1644	0.1291	0.1467	0.1526	0.1291	0.1232	0.1115	0.0763
111.0	0.2171	0.1526	0.1584	0.1291	0.1467	0.1526	0.1291	0.1232	0.1115	0.0763
114.0	0.2112	0.1526	0.1584	0.1350	0.1467	0.1526	0.1291	0.1232	0.1174	0.0763
117.0	0.2054	0.1526	0.1584	0.1350	0.1467	0.1526	0.1291	0.1232	0.1174	0.0763
120.0	0.2054	0.1526	0.1526	0.1350	0.1467	0.1526	0.1291	0.1232	0.1174	0.0763
123.0	0.1995	0.1526	0.1526	0.1350	0.1467	0.1526	0.1350	0.1232	0.1232	0.0763
126.0	0.1995	0.1526	0.1584	0.1408	0.1467	0.1526	0.1350	0.1232	0.1232	0.0763
129.0	0.1995	0.1526	0.1467	0.1408	0.1467	0.1526	0.1350	0.1232	0.1232	0.0763
132.0	0.1936	0.1526	0.1467	0.1408	0.1467	0.1526	0.1350	0.1232	0.1291	0.0763
135.0	0.1936	0.1526	0.1467	0.1409	0.1467	0.1526	0.1408	0.1232	0.1292	0.0763
138.0	0.1994	0.1526	0.1467	0.1467	0.1467	0.1526	0.1408	0.1232	0.1350	0.0763
141.0	0.1878	0.1526	0.1467	0.1467	0.1467	0.1526	0.1408	0.1232	0.1350	0.0763
144.0	0.1878	0.1526	0.1467	0.1526	0.1526	0.1526	0.1408	0.1232	0.1408	0.0763
147.0	0.1819	0.1526	0.1467	0.1526	0.1526	0.1526	0.1408	0.1232	0.1408	0.0763
150.0	0.1760	0.1526	0.1467	0.1526	0.1526	0.1526	0.1467	0.1232	0.1468	0.0938
153.0	0.1760	0.1526	0.1467	0.1526	0.1526	0.1526	0.1467	0.1349	0.1467	0.0939
156.0	0.1760	0.1526	0.1467	0.1526	0.1526	0.1526	0.1467	0.1350	0.1468	0.1056
159.0	0.1760	0.1526	0.1467	0.1526	0.1526	0.1526	0.1467	0.1350	0.1526	0.1290
162.0	0.1702	0.1526	0.1467	0.1526	0.1526	0.1526	0.1467	0.1350	0.1526	0.1291
165.0	0.1644	0.1526	0.1467	0.1526	0.1526	0.1526	0.1467	0.1350	0.1525	0.1350
168.0	0.1701	0.1526	0.1467	0.1526	0.1526	0.1526	0.1467	0.1350	0.1408	0.1350
171.0	0.1526	0.1526	0.1526	0.1526	0.1526	0.1526	0.1467	0.1350	0.1408	0.1408
174.0	0.1526	0.1526	0.1526	0.1526	0.1526	0.1526	0.1467	0.1350	0.1408	0.1408
177.0	0.1526	0.1526	0.1526	0.1526	0.1526	0.1526	0.1467	0.1350	0.1408	0.1408
180.0	0.1526	0.1526	0.1526	0.1526	0.1526	0.1526	0.1408	0.1408	0.1408	0.1408
G/C	300.0	330.0								
0.0	7.827	7.833								
3.0	7.821	7.833								
6.0	7.786	7.833								
9.0	7.716	7.792								
12.0	7.633	7.699								
15.0	7.516	7.575								
18.0	7.369	7.435								
21.0	7.199	7.265								
24.0	7.011	7.071								
27.0	6.800	6.860								
30.0	6.571	6.625								

C Range: 0 - 360DEG  
 C Interval: 30.0DEG  
 Test Speed: HIGH  
 Temperature: 25.3DEG  
 Operators: LYH  
 Test Date: 2024-08-03

γ Range: 0 - 180DEG  
 γ Interval: 1.0DEG  
 Test System: EVERFINE GO-2000B\_V1 SYSTEM V2.0.269  
 Humidity: 65.0%  
 Test Distance: 10.000m [K=1.0000]  
 Remarks: Blue

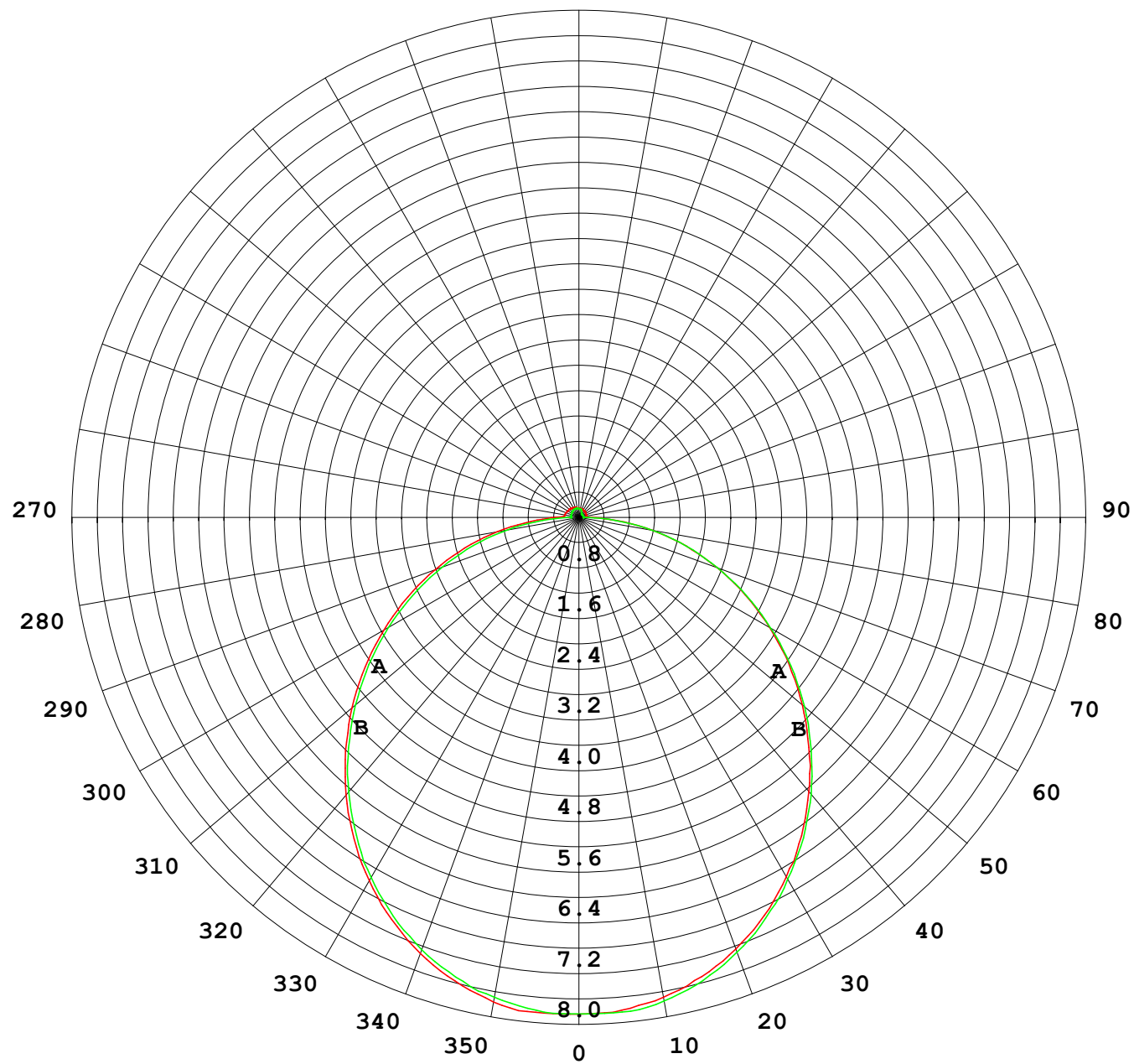
## Photometric Data Table [cd]

33.0	6.318	6.373
36.0	6.048	6.109
39.0	5.767	5.822
42.0	5.468	5.517
45.0	5.156	5.211
48.0	4.845	4.894
51.0	4.522	4.572
54.0	4.171	4.237
57.0	3.836	3.897
60.0	3.490	3.551
63.0	3.144	3.211
66.0	2.798	2.870
69.0	2.451	2.524
72.0	2.099	2.184
75.0	1.771	1.861
78.0	1.430	1.509
81.0	1.090	1.186
84.0	0.7495	0.8460
87.0	0.4038	0.5348
90.0	0.1580	0.3233
93.0	0.1174	0.1997
96.0	0.1174	0.1819
99.0	0.1174	0.1761
102.0	0.1174	0.1702
105.0	0.1174	0.1643
108.0	0.1174	0.1643
111.0	0.1174	0.1643
114.0	0.1174	0.1643
117.0	0.1232	0.1643
120.0	0.1232	0.1643
123.0	0.1232	0.1585
126.0	0.1291	0.1642
129.0	0.1291	0.1409
132.0	0.1291	0.1408
135.0	0.1292	0.1408
138.0	0.1350	0.1408
141.0	0.1350	0.1467
144.0	0.1408	0.1467
147.0	0.1408	0.1467
150.0	0.1408	0.1467
153.0	0.1408	0.1467
156.0	0.1408	0.1467
159.0	0.1408	0.1467
162.0	0.1408	0.1467
165.0	0.1408	0.1467
168.0	0.1408	0.1467
171.0	0.1408	0.1467
174.0	0.1408	0.1467
177.0	0.1408	0.1467
180.0	0.1408	0.1467

C Range: 0 - 360DEG  
C Interval: 30.0DEG  
Test Speed: HIGH  
Temperature:25.3DEG  
Operators:LYH  
Test Date:2024-08-03

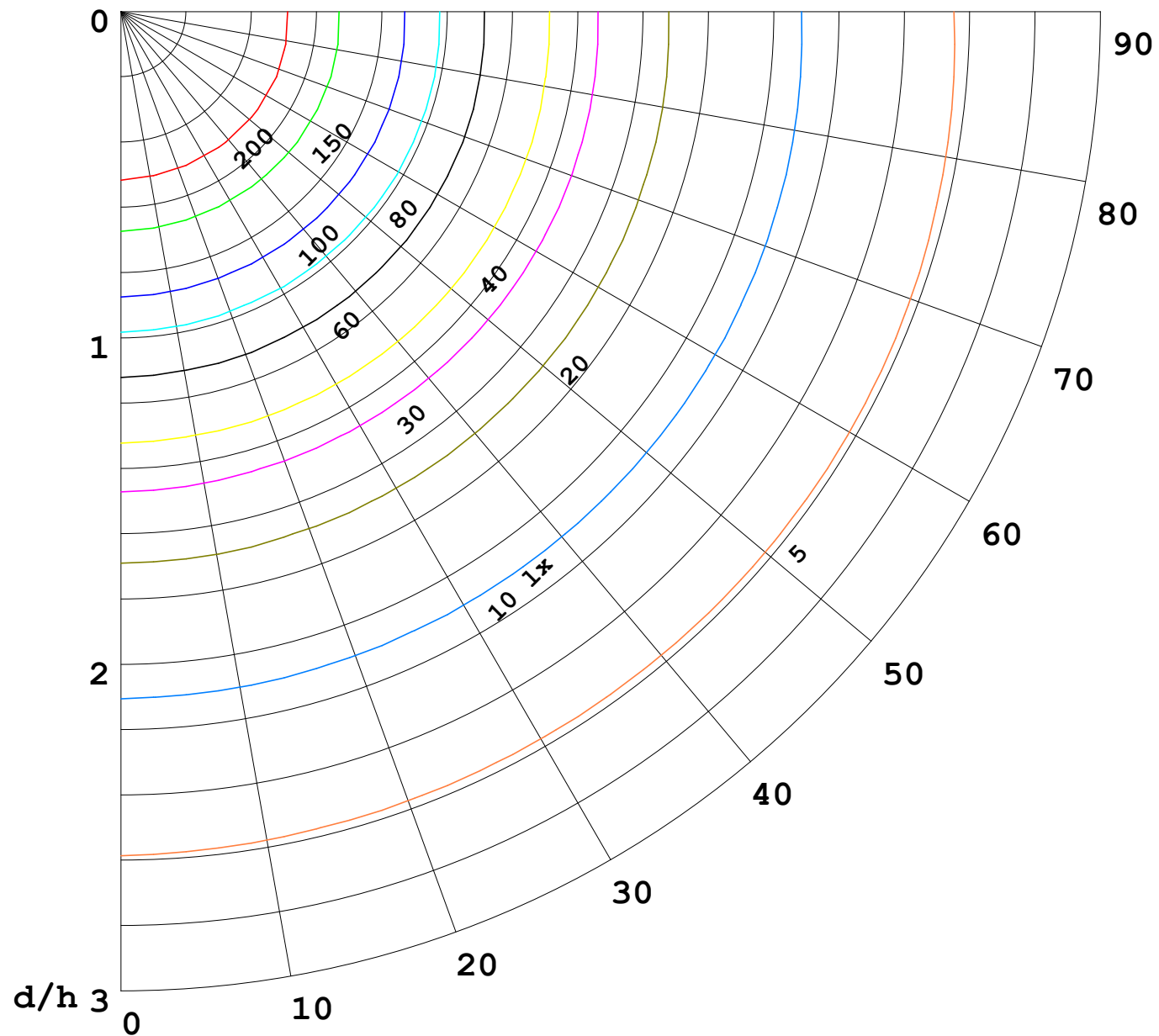
γ Range: 0 - 180DEG  
γ Interval: 1.0DEG  
Test System:EVERFINE GO-2000B\_V1 SYSTEM V2.0.269  
Humidity:65.0%  
Test Distance:10.000m [K=1.0000]  
Remarks: Blue

I (cd)



1000 lm

$\kappa = 1$



F = 5000 lm  
 K = 0.7  
 Hcc = 0.0 m  
 Hfc = 0.0 m  
 Eave = 100 lx

	Pcc	Pw	Pfc
—	70	50	30
—	50	30	20

