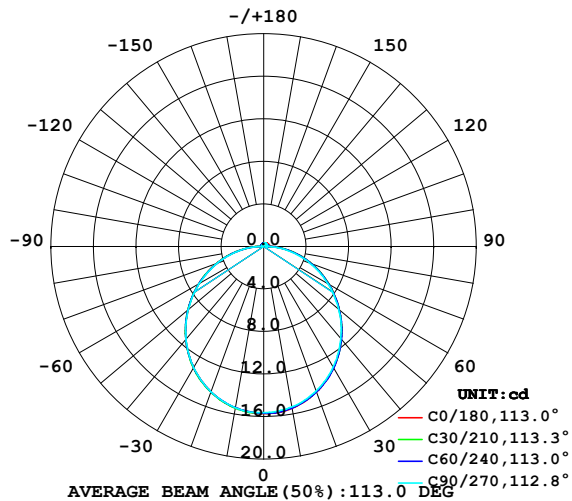


LUMINAIRE PHOTOMETRIC TEST REPORT

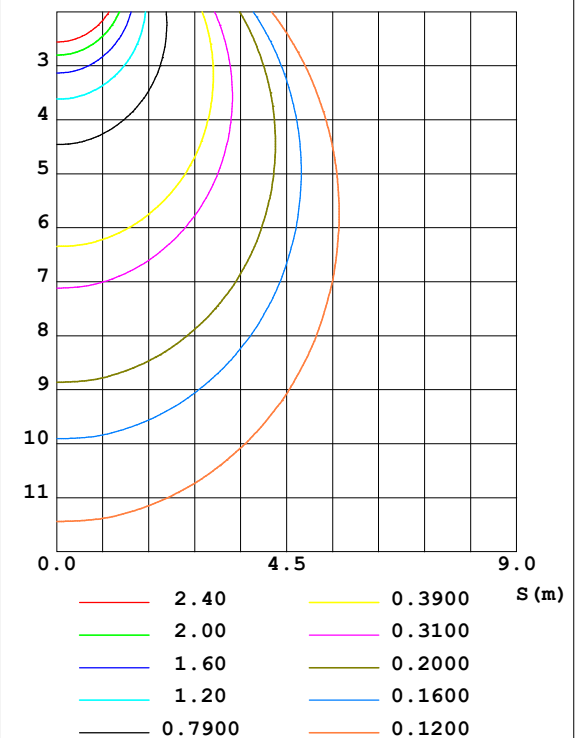
Test:U:24.00V I:0.1612A P:3.869W PF:1.000 Lamp Flux:48.2132x1 lm		
NAME: SF15-24V-5050-60-RGBW3000K	TYPE:	WEIGHT:
DIM.: Length=1m	SPEC.:	SERIAL No.:
MFR.:	SUR.:	PROTECTION ANGLE:

DATA OF LAMP		PHOTOMETRIC DATA Eff: 12.46 lm/W			
MODEL		I _{max} (cd)	15.71	S/MH (C0/180)	1.25
NOMINAL POWER (W)		LOR (%)	100.0	S/MH (C90/270)	1.25
RATED VOLTAGE (V)		TOTAL FLUX (lm)	48.213	η UP, DN (C0-180)	2.3, 47.9
NOMINAL FLUX (lm)	48.2132	CIE CLASS	DIRECT	η UP, DN (C180-360)	1.8, 48.0
LAMPS INSIDE	1	η up (%)	4.1	CIBSE SHR NOM	1.25
TEST VOLTAGE (V)		η down (%)	95.9	CIBSE SHR MAX	1.35

LUMINOUS INTENSITY DISTRIBUTION DIAGRAM



C0 PLANE ISOLUX DIAGRAM (UNIT:lx)



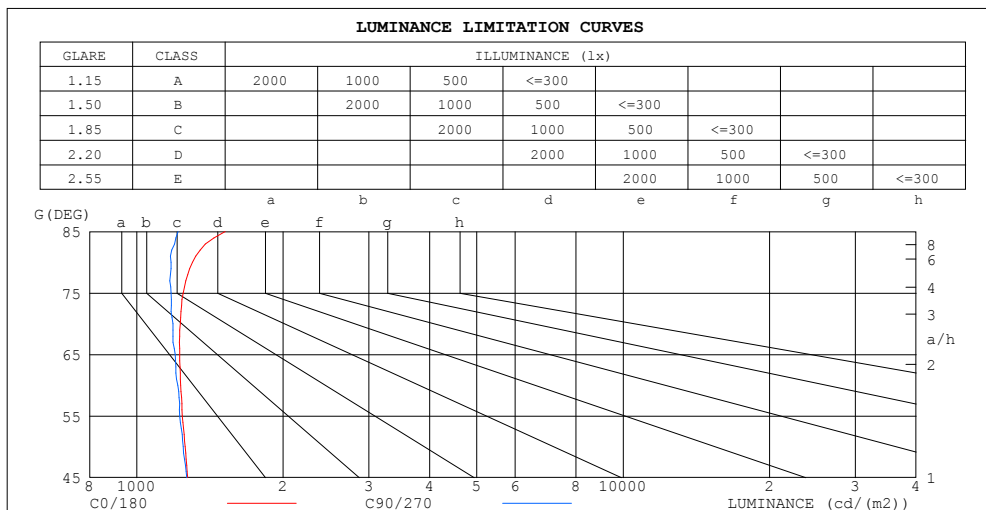
C Range: 0 - 360DEG
C Interval: 30.0DEG
Test Speed: HIGH
Temperature: 25.3DEG
Operators: LYH
Test Date: 2024-08-03

γ Range: 0 - 180DEG
γ Interval: 1.0DEG
Test System: EVERFINE GO-2000B_V1 SYSTEM V2.0.269
Humidity: 65.0%
Test Distance: 10.000m [K=1.0000]
Remarks: Red

ZONAL FLUX DIAGRAM AND LUMINANCE LIMITATION CURVES

ZONAL FLUX DIAGRAM:

γ	C0	C45	C90	C135	C180	C225	C270	C315	γ	Φ zone	Φ total	%lum, lamp
10	15.45	15.41	15.32	15.33	15.41	15.41	15.40	15.36	0- 10	1.482	1.482	3.07,3.07
20	14.56	14.54	14.46	14.46	14.55	14.55	14.54	14.50	10- 20	4.238	5.720	11.9,11.9
30	13.17	13.18	13.09	13.09	13.18	13.20	13.17	13.14	20- 30	6.402	12.12	25.1,25.1
40	11.36	11.37	11.29	11.29	11.39	11.40	11.38	11.37	30- 40	7.693	19.81	41.1,41.1
50	9.297	9.298	9.210	9.215	9.292	9.315	9.290	9.303	40- 50	7.984	27.80	57.7,57.7
60	7.079	7.079	6.980	6.988	7.056	7.058	7.019	7.073	50- 60	7.308	35.11	72.8,72.8
70	4.831	4.800	4.668	4.694	4.762	4.729	4.678	4.805	60- 70	5.834	40.94	84.9,84.9
80	2.602	2.541	2.351	2.397	2.450	2.397	2.331	2.502	70- 80	3.797	44.74	92.8,92.8
90	0.7699	0.5870	0.2582	0.4637	0.5271	0.4022	0.1828	0.5281	80- 90	1.495	46.23	95.9,95.9
100	0.4929	0.4078	0.2758	0.3227	0.2875	0.2611	0.1760	0.3081	90-100	0.3732	46.61	96.7,96.7
110	0.4637	0.3785	0.2875	0.3227	0.2875	0.2640	0.1760	0.2875	100-110	0.3339	46.94	97.4,97.4
120	0.4401	0.3404	0.2875	0.3227	0.2875	0.2699	0.1760	0.2875	110-120	0.3056	47.25	98,98
130	0.4283	0.3257	0.2992	0.3227	0.2875	0.2758	0.2170	0.2963	120-130	0.2727	47.52	98.6,98.6
140	0.4049	0.3198	0.3110	0.3227	0.2875	0.2846	0.2230	0.3022	130-140	0.2374	47.76	99.1,99.1
150	0.3814	0.3198	0.3286	0.3227	0.2875	0.2934	0.2347	0.3080	140-150	0.1934	47.95	99.5,99.5
160	0.3639	0.3227	0.3345	0.3227	0.2875	0.2992	0.2523	0.3140	150-160	0.1445	48.09	99.8,99.8
170	0.3286	0.3257	0.3345	0.3257	0.2875	0.3110	0.2875	0.3198	160-170	0.0894	48.18	99.9,99.9
180	0.3227	0.3286	0.3345	0.3286	0.2875	0.3286	0.3227	0.3257	170-180	0.0305	48.21	100,100
DEG	LUMINOUS INTENSITY:cd									UNIT:lm		



LUMINANCE cd/(m2)		
G (DEG)	C0/180	C90/270
85	1519	1215
80	1303	1177
75	1247	1176
70	1228	1187
65	1225	1200
60	1231	1214
55	1241	1226
50	1258	1246
45	1273	1266

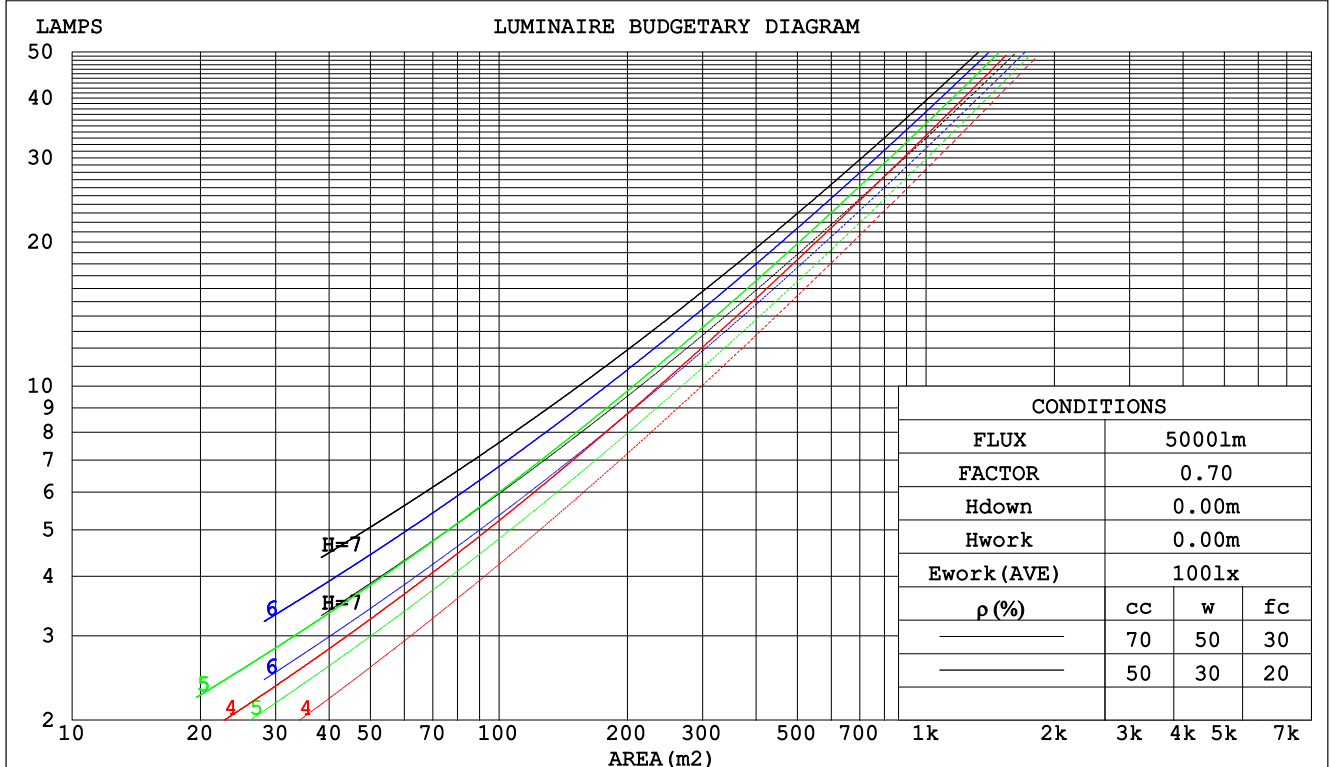
C Range: 0 - 360DEG
C Interval: 30.0DEG
Test Speed: HIGH
Temperature:25.3DEG
Operators:LYH
Test Date:2024-08-03

γ Range: 0 - 180DEG
 γ Interval: 1.0DEG
Test System:EVERFINE GO-2000B_V1 SYSTEM V2.0.269
Humidity:65.0%
Test Distance:10.000m [K=1.0000]
Remarks: Red

CU AND LUMINAIRE BUDGETARY ESTIMATE DIAGRAM

Test:U:24.00V I:0.1612A P:3.869W PF:1.000 Lamp Flux:48.2132x1 lm		
NAME: SF15-24V-5050-60-RGBW3000K	TYPE:	WEIGHT:
DIM.: Length=1m	SPEC.:	SERIAL No.:
MFR.:	SUR.:	PROTECTION ANGLE:

ρ_{cc}	80%			70%			50%			30%			10%			0
ρ_w	50%	30%	10%	50%	30%	10%	50%	30%	10%	50%	30%	10%	50%	30%	10%	0
ρ_{fc}	20%			20%			20%			20%			20%			0
RCR	Coefficients of Utilization(CU)															
	RCR:Room Cavity Ratio															
0.0	1.18	1.18	1.18	1.15	1.15	1.15	1.09	1.09	1.09	1.03	1.03	1.03	.98	.98	.98	.96
1.0	1.02	.97	.93	.99	.95	.91	.94	.91	.88	.90	.87	.84	.85	.83	.81	.79
2.0	.88	.81	.75	.86	.80	.74	.82	.76	.72	.78	.73	.69	.74	.71	.67	.65
3.0	.77	.69	.62	.75	.68	.61	.72	.65	.60	.69	.63	.58	.65	.61	.57	.54
4.0	.68	.59	.53	.67	.58	.52	.64	.57	.51	.61	.55	.50	.58	.53	.49	.46
5.0	.61	.52	.45	.60	.51	.45	.57	.50	.44	.55	.48	.43	.52	.47	.42	.40
6.0	.55	.46	.39	.54	.45	.39	.51	.44	.38	.49	.43	.38	.47	.42	.37	.35
7.0	.50	.41	.35	.49	.40	.34	.47	.39	.34	.45	.38	.33	.43	.37	.33	.31
8.0	.45	.37	.31	.44	.36	.31	.43	.35	.30	.41	.35	.30	.40	.34	.29	.27
9.0	.42	.33	.28	.41	.33	.28	.39	.32	.27	.38	.31	.27	.37	.31	.26	.25
10.0	.38	.30	.25	.38	.30	.25	.36	.29	.25	.35	.29	.24	.34	.28	.24	.22



C Range: 0 - 360DEG
C Interval: 30.0DEG
Test Speed: HIGH
Temperature:25.3DEG
Operators:LYH
Test Date:2024-08-03

γ Range: 0 - 180DEG
 γ Interval: 1.0DEG
Test System:EVERFINE GO-2000B_V1 SYSTEM V2.0.269
Humidity:65.0%
Test Distance:10.000m [K=1.0000]
Remarks: Red

WEC AND CCEC

Test:U:24.00V I:0.1612A P:3.869W PF:1.000 Lamp Flux:48.2132x1 lm					
NAME: SF15-24V-5050-60-RGBW3000K			TYPE:		WEIGHT:
DIM.: Length=1m			SPEC.:		SERIAL No.:
MFR.:			SUR.:		PROTECTION ANGLE:

pcc	80%			70%			50%			30%			10%			0	
pw	50%	30%	10%	50%	30%	10%	50%	30%	10%	50%	30%	10%	50%	30%	10%	0	
pfc	20%			20%			20%			20%			20%			0	
RCR	RCR:Room Cavity Ratio						Wall Exitance Coefficients(WEC)										
0.0																	
1.0	.327	.186	.059	.319	.182	.058	.303	.174	.056	.289	.167	.053	.276	.160	.052		
2.0	.302	.165	.051	.294	.162	.050	.280	.156	.048	.267	.150	.047	.256	.145	.046		
3.0	.276	.147	.044	.270	.144	.043	.257	.139	.042	.246	.135	.041	.235	.130	.040		
4.0	.253	.132	.039	.247	.129	.038	.236	.125	.037	.226	.121	.037	.216	.118	.036		
5.0	.233	.119	.034	.228	.117	.034	.218	.113	.033	.209	.110	.033	.200	.107	.032		
6.0	.216	.108	.031	.211	.106	.031	.202	.103	.030	.194	.101	.030	.186	.098	.029		
7.0	.200	.099	.028	.196	.098	.028	.188	.095	.027	.180	.092	.027	.173	.090	.026		
8.0	.187	.091	.026	.183	.090	.025	.175	.088	.025	.169	.085	.025	.162	.083	.024		
9.0	.175	.084	.024	.171	.083	.023	.165	.081	.023	.158	.079	.023	.152	.077	.022		
10.0	.164	.079	.022	.161	.078	.022	.155	.076	.021	.149	.074	.021	.144	.072	.021		

pcc	80%			70%			50%			30%			10%			0
pw	50%	30%	10%	50%	30%	10%	50%	30%	10%	50%	30%	10%	50%	30%	10%	0
pfc	20%			20%			20%			20%			20%			0
RCR	RCR:Room Cavity Ratio						Ceiling Cavity Exitance Coefficients(CCEC)									
0.0	.222	.222	.222	.190	.190	.190	.129	.129	.129	.074	.074	.074	.024	.024	.024	
1.0	.213	.188	.165	.182	.161	.142	.125	.111	.098	.072	.064	.057	.023	.021	.018	
2.0	.205	.164	.129	.176	.141	.111	.121	.097	.078	.069	.057	.045	.022	.018	.015	
3.0	.198	.146	.105	.169	.126	.091	.116	.088	.064	.067	.051	.038	.022	.017	.012	
4.0	.190	.133	.090	.163	.115	.078	.112	.080	.055	.065	.047	.032	.021	.015	.011	
5.0	.182	.123	.079	.157	.106	.069	.108	.074	.048	.063	.044	.029	.020	.014	.009	
6.0	.175	.115	.071	.151	.099	.062	.104	.069	.044	.060	.041	.026	.019	.013	.009	
7.0	.168	.108	.065	.145	.093	.057	.100	.066	.040	.058	.039	.024	.019	.013	.008	
8.0	.162	.102	.061	.139	.089	.053	.096	.062	.038	.056	.037	.022	.018	.012	.007	
9.0	.156	.097	.058	.134	.084	.050	.093	.059	.036	.054	.035	.021	.018	.011	.007	
10.0	.150	.093	.055	.129	.081	.048	.090	.057	.034	.052	.034	.020	.017	.011	.007	

C Range: 0 - 360DEG
 C Interval: 30.0DEG
 Test Speed: HIGH
 Temperature:25.3DEG
 Operators:LYH
 Test Date:2024-08-03

γ Range: 0 - 180DEG
 γ Interval: 1.0DEG
 Test System:EVERFINE GO-2000B_V1 SYSTEM V2.0.269
 Humidity:65.0%
 Test Distance:10.000m [K=1.0000]
 Remarks: Red

Uncorrected UGR Table

Test:U:24.00V I:0.1612A P:3.869W PF:1.000 Lamp Flux:48.2132x1 lm											
NAME: SF15-24V-5050-60-RGBW3000K						TYPE:		WEIGHT:			
DIM.: Length=1m						SPEC.:		SERIAL No.:			
MFR.:						SUR.:		PROTECTION ANGLE:			
ceiling/cavity	0.7	0.7	0.5	0.5	0.3	0.7	0.7	0.5	0.5	0.3	
walls	0.5	0.3	0.5	0.3	0.3	0.5	0.3	0.5	0.3	0.3	
working plane	0.2	0.2	0.2	0.2	0.2	0.2	0.2	0.2	0.2	0.2	
Room dimensions		Viewed crosswise					Viewed endwise				
x = 2H y = 2H	13.4	14.9	13.7	15.1	15.4	13.3	14.8	13.7	15.1	15.4	
	3H	15.1	16.5	15.5	16.8	17.1	15.0	16.4	15.4	16.7	17.0
	4H	15.9	17.2	16.3	17.5	17.9	15.8	17.1	16.2	17.4	17.8
	6H	16.6	17.8	17.0	18.2	18.6	16.4	17.6	16.8	18.0	18.3
	8H	16.9	18.1	17.3	18.4	18.8	16.6	17.8	17.0	18.2	18.6
	12H	17.2	18.3	17.6	18.7	19.1	16.8	18.0	17.2	18.3	18.7
4H	2H	14.0	15.3	14.4	15.7	16.0	14.0	15.3	14.4	15.6	16.0
	3H	16.0	17.1	16.4	17.5	17.9	15.9	17.0	16.3	17.4	17.8
	4H	16.9	18.0	17.3	18.4	18.8	16.8	17.8	17.2	18.2	18.7
	6H	17.8	18.7	18.2	19.1	19.6	17.6	18.5	18.0	18.9	19.4
	8H	18.1	19.0	18.6	19.4	19.9	17.9	18.7	18.4	19.2	19.7
	12H	18.5	19.3	18.9	19.7	20.2	18.1	18.9	18.6	19.4	19.9
8H	4H	17.3	18.1	17.7	18.6	19.0	17.2	18.0	17.6	18.5	18.9
	6H	18.3	19.0	18.8	19.5	20.0	18.1	18.9	18.6	19.3	19.9
	8H	18.8	19.4	19.3	19.9	20.5	18.6	19.2	19.1	19.7	20.3
	12H	19.3	19.8	19.8	20.3	20.9	19.0	19.5	19.5	20.0	20.6
12H	4H	17.3	18.1	17.8	18.6	19.0	17.2	18.0	17.7	18.5	19.0
	6H	18.4	19.1	18.9	19.6	20.1	18.2	18.9	18.8	19.4	19.9
	8H	19.0	19.5	19.5	20.0	20.6	18.8	19.3	19.3	19.8	20.4
Variations with the observer position at spacings:											
S = 1.0H	+ 0.1 / - 0.2					+ 0.1 / - 0.2					
1.5H	+ 0.2 / - 0.3					+ 0.2 / - 0.3					
2.0H	+ 0.1 / - 0.3					+ 0.1 / - 0.3					

CIE Pub.117 Corrected 48.21 lm Total Lamp Luminous Flux. (8log(F/F0) = -10.5)

C Range: 0 - 360DEG
 C Interval: 30.0DEG
 Test Speed: HIGH
 Temperature: 25.3DEG
 Operators: LYH
 Test Date: 2024-08-03

γ Range: 0 - 180DEG
 γ Interval: 1.0DEG
 Test System: EVERFINE GO-2000B_V1 SYSTEM V2.0.269
 Humidity: 65.0%
 Test Distance: 10.000m [K=1.0000]
 Remarks: Red

UTILIZATION FACTORS TABLE

Test:U:24.00V I:0.1612A P:3.869W PF:1.000 Lamp Flux:48.2132x1 lm		
NAME: SF15-24V-5050-60-RGBW3000K	TYPE:	WEIGHT:
DIM.: Length=1m	SPEC.:	SERIAL No.:
MFR.:	SUR.:	PROTECTION ANGLE:

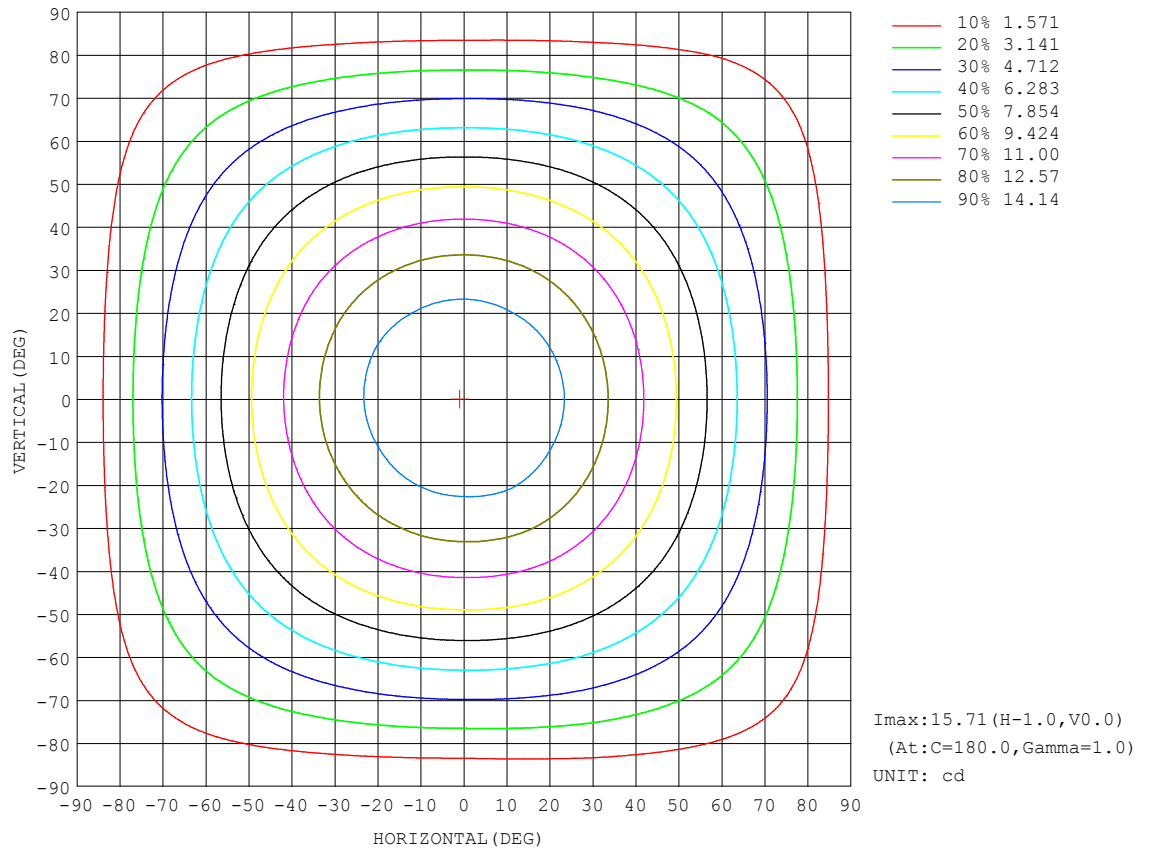
REFLECTANCE										
Ceiling	0.8	0.8	0.8	0.7	0.7	0.7	0.5	0.5	0.5	0
Walls	0.7	0.5	0.3	0.7	0.5	0.3	0.7	0.5	0.3	0
Working plane	0.2	0.2	0.2	0.2	0.2	0.2	0.2	0.2	0.2	0
ROOM INDEX	UTILIZATION FACTORS (PERCENT) $k(RI) \times RCR = 5$									
$k = 0.60$	55	44	37	55	43	37	53	43	36	30
0.80	65	53	46	64	53	46	62	52	45	38
1.00	73	62	54	72	61	54	69	62	53	46
1.25	81	70	62	79	69	62	76	67	61	53
1.50	86	75	68	84	74	67	80	72	66	58
2.00	92	83	77	90	82	76	86	79	74	65
2.50	97	88	82	94	87	81	90	83	78	69
3.00	100	93	87	97	91	85	93	87	83	73
4.00	104	98	93	101	96	91	96	92	88	78
5.00	107	101	97	104	99	95	99	95	92	81
ROOM INDEX	UF(total)									Direct
According to DIN EN 13032-2 2004			Suspended					SHRNOM = 1.25		

C Range: 0 - 360DEG
C Interval: 30.0DEG
Test Speed: HIGH
Temperature:25.3DEG
Operators:LYH
Test Date:2024-08-03

γ Range: 0 - 180DEG
 γ Interval: 1.0DEG
Test System:EVERFINE GO-2000B_V1 SYSTEM V2.0.269
Humidity:65.0%
Test Distance:10.000m [K=1.0000]
Remarks: Red

ISOCANDELA DIAGRAM

Test:U:24.00V I:0.1612A P:3.869W PF:1.000 Lamp Flux:48.2132x1 lm		
NAME: SF15-24V-5050-60-RGBW3000K	TYPE:	WEIGHT:
DIM.: Length=1m	SPEC.:	SERIAL No.:
MFR.:	SUR.:	PROTECTION ANGLE:

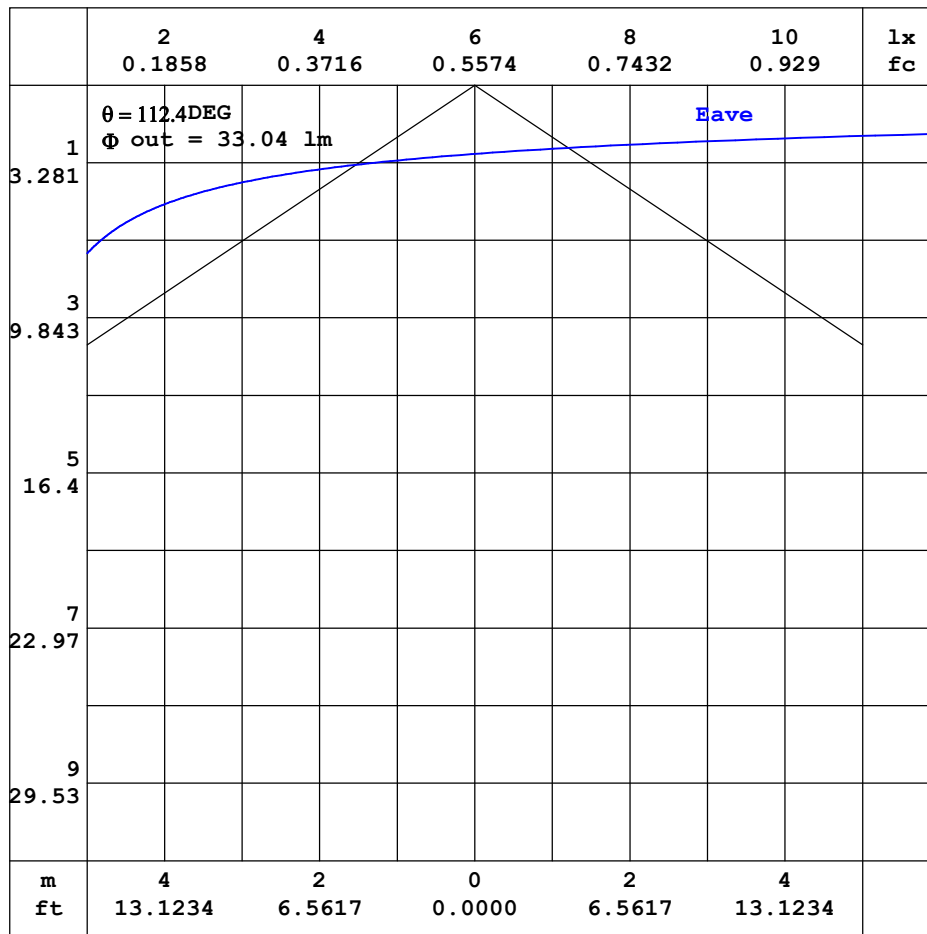


C Range: 0 - 360DEG
C Interval: 30.0DEG
Test Speed: HIGH
Temperature:25.3DEG
Operators:LYH
Test Date:2024-08-03

γ Range: 0 - 180DEG
 γ Interval: 1.0DEG
Test System:EVERFINE GO-2000B_V1 SYSTEM V2.0.269
Humidity:65.0%
Test Distance:10.000m [K=1.0000]
Remarks: Red

AAI CURVES

Test:U:24.00V I:0.1612A P:3.869W PF:1.000 Lamp Flux:48.2132x1 lm		
NAME: SF15-24V-5050-60-RGBW3000K	TYPE:	WEIGHT:
DIM.: Length=1m	SPEC.:	SERIAL No.:
MFR.:	SUR.:	PROTECTION ANGLE:



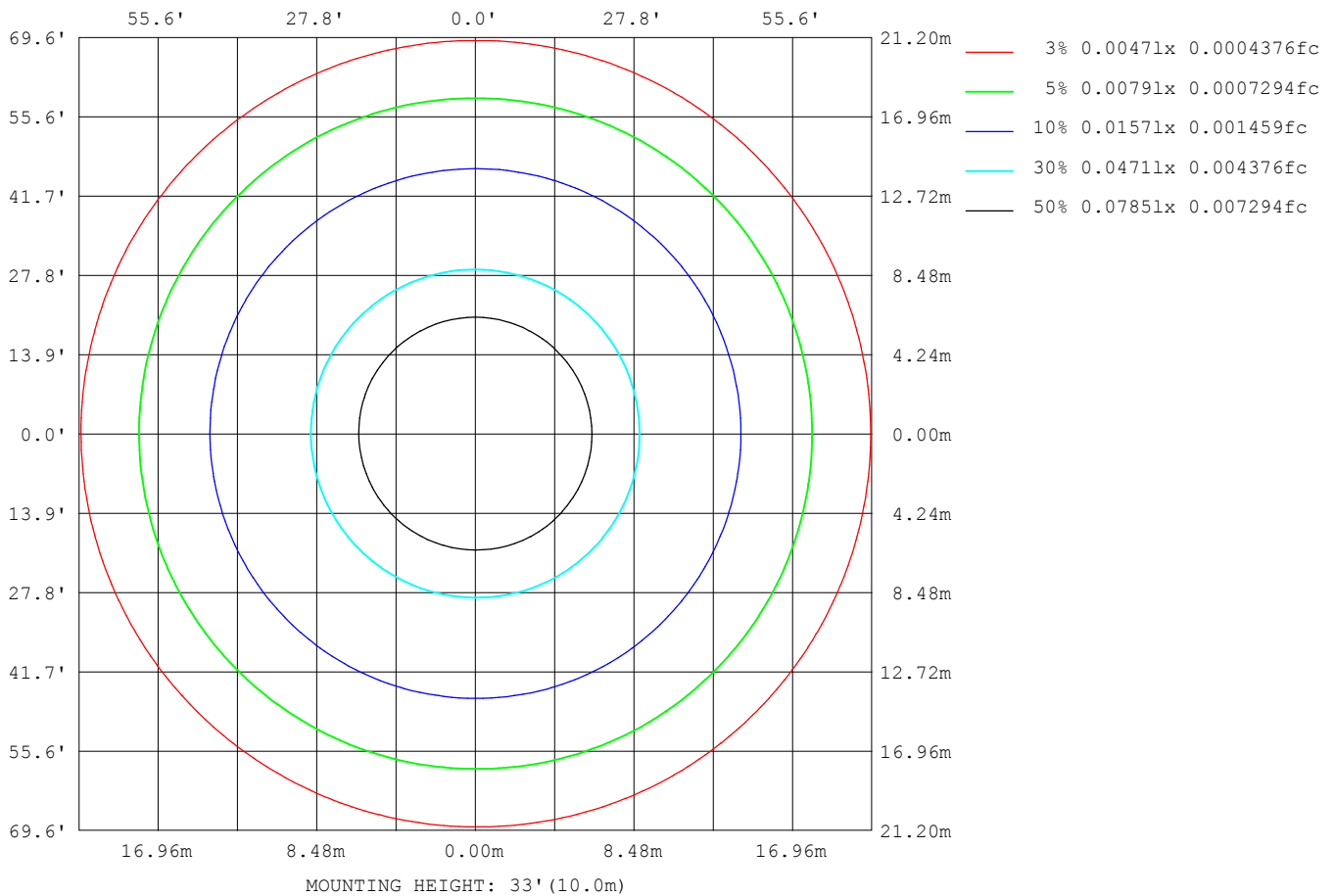
Note: The Curves indicate the illuminated area and the average illumination when the luminaire is at different distance.

C Range: 0 - 360DEG
C Interval: 30.0DEG
Test Speed: HIGH
Temperature: 25.3DEG
Operators: LYH
Test Date: 2024-08-03

γ Range: 0 - 180DEG
γ Interval: 1.0DEG
Test System: EVERFINE GO-2000B_V1 SYSTEM V2.0.269
Humidity: 65.0%
Test Distance: 10.000m [K=1.0000]
Remarks: Red

ISOLUX DIAGRAM

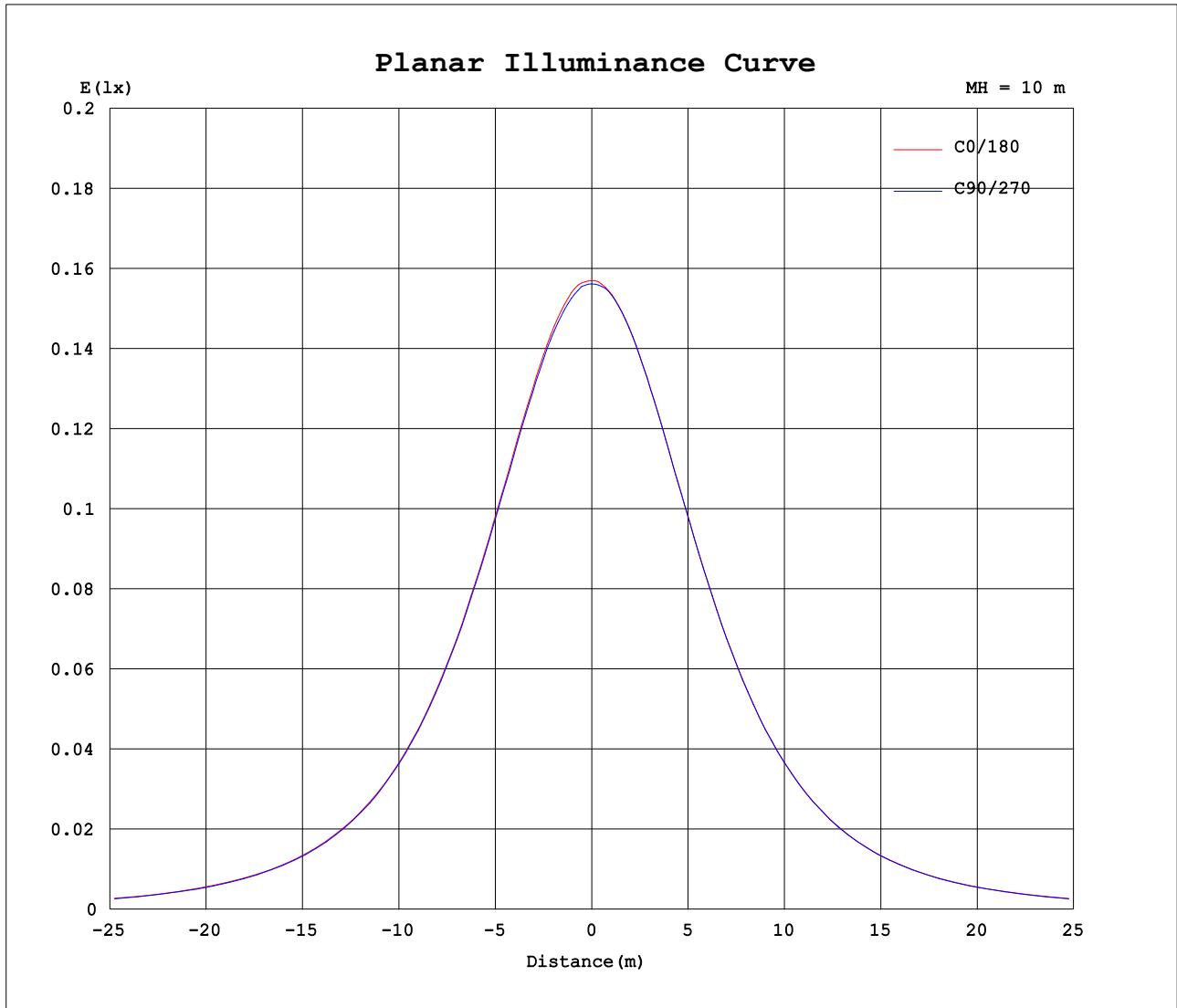
Test:U:24.00V I:0.1612A P:3.869W PF:1.000 Lamp Flux:48.2132x1 lm		
NAME: SF15-24V-5050-60-RGBW3000K	TYPE:	WEIGHT:
DIM.: Length=1m	SPEC.:	SERIAL No.:
MFR.:	SUR.:	PROTECTION ANGLE:



C Range: 0 - 360DEG
C Interval: 30.0DEG
Test Speed: HIGH
Temperature: 25.3DEG
Operators: LYH
Test Date: 2024-08-03

γ Range: 0 - 180DEG
 γ Interval: 1.0DEG
Test System: EVERFINE GO-2000B_V1 SYSTEM V2.0.269
Humidity: 65.0%
Test Distance: 10.000m [K=1.0000]
Remarks: Red

Planar Illuminance Curve



C Range: 0 - 360DEG
C Interval: 30.0DEG
Test Speed: HIGH
Temperature: 25.3DEG
Operators: LYH
Test Date: 2024-08-03

γ Range: 0 - 180DEG
 γ Interval: 1.0DEG
Test System: EVERFINE GO-2000B_V1 SYSTEM V2.0.269
Humidity: 65.0%
Test Distance: 10.000m [K=1.0000]
Remarks: Red

LUMINOUS DISTRIBUTION INTENSITY DATA

Test:U:24.00V I:0.1612A P:3.869W PF:1.000 Lamp Flux:48.2132x1 lm		
NAME: SF15-24V-5050-60-RGBW3000K	TYPE:	WEIGHT:
DIM.: Length=1m	SPEC.:	SERIAL No.:
MFR.:	SUR.:	PROTECTION ANGLE:

Table--1

UNIT: cd

C (DEG) γ (DEG)	0	30	60	90	120	150	180	210	240	270	300	330							
0	15.7	15.7	15.7	15.6	15.6	15.6	15.7	15.7	15.7	15.6	15.6	15.6							
5	15.7	15.6	15.7	15.5	15.6	15.5	15.6	15.7	15.6	15.6	15.5	15.6							
10	15.5	15.4	15.4	15.3	15.3	15.3	15.4	15.4	15.4	15.4	15.3	15.4							
15	15.1	15.0	15.1	15.0	15.0	14.9	15.0	15.1	15.0	15.0	15.0	15.0							
20	14.6	14.5	14.6	14.5	14.5	14.5	14.6	14.6	14.5	14.5	14.5	14.5							
25	13.9	13.9	13.9	13.8	13.8	13.8	13.9	14.0	13.9	13.9	13.9	13.9							
30	13.2	13.2	13.2	13.1	13.1	13.1	13.2	13.2	13.2	13.2	13.2	13.1							
35	12.3	12.3	12.3	12.2	12.2	12.2	12.3	12.3	12.3	12.3	12.3	12.3							
40	11.4	11.4	11.4	11.3	11.3	11.3	11.4	11.4	11.4	11.4	11.4	11.4							
45	10.4	10.4	10.4	10.3	10.3	10.3	10.4	10.4	10.4	10.4	10.4	10.4							
50	9.30	9.30	9.30	9.21	9.20	9.23	9.29	9.33	9.30	9.29	9.30	9.30							
55	8.19	8.18	8.18	8.08	8.09	8.12	8.18	8.22	8.19	8.16	8.19	8.20							
60	7.08	7.09	7.07	6.98	6.97	7.01	7.06	7.07	7.05	7.02	7.06	7.08							
65	5.95	5.95	5.92	5.83	5.82	5.86	5.90	5.91	5.87	5.85	5.92	5.96							
70	4.83	4.82	4.78	4.67	4.67	4.72	4.76	4.75	4.70	4.68	4.78	4.83							
75	3.71	3.70	3.65	3.50	3.52	3.58	3.60	3.58	3.53	3.49	3.61	3.70							
80	2.60	2.57	2.51	2.35	2.37	2.42	2.45	2.43	2.36	2.33	2.41	2.59							
85	1.52	1.48	1.41	1.22	1.25	1.31	1.33	1.30	1.22	1.19	1.33	1.49							
90	0.77	0.66	0.51	0.26	0.41	0.52	0.53	0.51	0.29	0.18	0.39	0.67							
95	0.50	0.43	0.40	0.26	0.32	0.33	0.29	0.29	0.24	0.18	0.24	0.40							
100	0.49	0.43	0.39	0.28	0.32	0.33	0.29	0.28	0.24	0.18	0.24	0.38							
105	0.49	0.42	0.36	0.28	0.32	0.33	0.29	0.28	0.25	0.18	0.26	0.35							
110	0.46	0.40	0.35	0.29	0.32	0.33	0.29	0.28	0.25	0.18	0.26	0.31							
115	0.46	0.40	0.34	0.29	0.32	0.33	0.29	0.28	0.26	0.18	0.26	0.31							
120	0.44	0.36	0.32	0.29	0.32	0.33	0.29	0.28	0.26	0.18	0.26	0.31							
125	0.43	0.35	0.32	0.29	0.32	0.33	0.29	0.28	0.27	0.18	0.27	0.31							
130	0.43	0.33	0.32	0.30	0.32	0.33	0.29	0.28	0.28	0.22	0.28	0.31							
135	0.42	0.32	0.32	0.31	0.32	0.33	0.29	0.28	0.28	0.22	0.29	0.31							
140	0.40	0.32	0.32	0.31	0.32	0.33	0.29	0.28	0.29	0.22	0.29	0.31							
145	0.39	0.32	0.32	0.32	0.32	0.33	0.29	0.28	0.30	0.22	0.30	0.31							
150	0.38	0.32	0.32	0.33	0.32	0.33	0.29	0.28	0.31	0.23	0.31	0.31							
155	0.37	0.32	0.32	0.33	0.32	0.33	0.29	0.28	0.32	0.25	0.32	0.31							
160	0.36	0.32	0.32	0.33	0.32	0.33	0.29	0.28	0.32	0.25	0.32	0.31							
165	0.36	0.33	0.32	0.33	0.32	0.33	0.29	0.29	0.33	0.26	0.33	0.31							
170	0.33	0.33	0.32	0.33	0.32	0.33	0.29	0.29	0.33	0.29	0.33	0.31							
175	0.32	0.33	0.32	0.33	0.32	0.33	0.29	0.32	0.34	0.31	0.33	0.31							
180	0.32	0.33	0.33	0.33	0.33	0.33	0.29	0.32	0.33	0.32	0.33	0.32							

C Range: 0 - 360DEG
C Interval: 30.0DEG
Test Speed: HIGH
Temperature:25.3DEG
Operators:LYH
Test Date:2024-08-03

γ Range: 0 - 180DEG
γ Interval: 1.0DEG
Test System:EVERFINE GO-2000B_V1 SYSTEM V2.0.269
Humidity:65.0%
Test Distance:10.000m [K=1.0000]
Remarks: Red

Photometric Data Table [cd]

G/C	0.0	30.0	60.0	90.0	120.0	150.0	180.0	210.0	240.0	270.0
0.0	15.70	15.67	15.69	15.62	15.61	15.61	15.70	15.67	15.69	15.62
3.0	15.70	15.65	15.69	15.61	15.61	15.60	15.68	15.67	15.65	15.62
6.0	15.66	15.58	15.62	15.51	15.54	15.51	15.60	15.63	15.57	15.58
9.0	15.51	15.43	15.49	15.37	15.40	15.37	15.47	15.50	15.44	15.46
12.0	15.32	15.26	15.30	15.20	15.22	15.19	15.28	15.32	15.26	15.27
15.0	15.08	15.03	15.07	14.96	14.97	14.95	15.05	15.09	15.03	15.04
18.0	14.77	14.75	14.77	14.67	14.69	14.67	14.76	14.79	14.75	14.75
21.0	14.44	14.42	14.44	14.34	14.34	14.35	14.43	14.46	14.42	14.42
24.0	14.05	14.02	14.05	13.96	13.95	13.96	14.05	14.08	14.04	14.04
27.0	13.64	13.62	13.65	13.55	13.54	13.55	13.64	13.69	13.63	13.63
30.0	13.17	13.17	13.19	13.09	13.08	13.10	13.18	13.22	13.18	13.17
33.0	12.66	12.67	12.69	12.59	12.57	12.60	12.68	12.70	12.68	12.66
36.0	12.12	12.13	12.15	12.06	12.04	12.06	12.14	12.18	12.14	12.14
39.0	11.56	11.57	11.57	11.48	11.48	11.50	11.58	11.60	11.58	11.57
42.0	10.96	10.98	10.98	10.89	10.89	10.91	10.98	11.03	10.99	10.96
45.0	10.35	10.37	10.38	10.30	10.28	10.30	10.37	10.39	10.38	10.37
48.0	9.725	9.732	9.737	9.644	9.648	9.668	9.726	9.771	9.749	9.712
51.0	9.074	9.075	9.074	8.993	8.992	9.011	9.074	9.120	9.092	9.044
54.0	8.411	8.407	8.411	8.313	8.317	8.348	8.406	8.434	8.406	8.387
57.0	7.759	7.761	7.742	7.673	7.654	7.690	7.743	7.765	7.748	7.683
60.0	7.079	7.092	7.067	6.980	6.967	7.010	7.056	7.066	7.050	7.019
63.0	6.404	6.399	6.381	6.282	6.281	6.311	6.363	6.380	6.340	6.298
66.0	5.729	5.737	5.700	5.584	5.589	5.631	5.672	5.664	5.636	5.594
69.0	5.054	5.038	5.008	4.892	4.902	4.933	4.991	4.989	4.926	4.907
72.0	4.380	4.363	4.333	4.182	4.210	4.252	4.292	4.286	4.234	4.186
75.0	3.711	3.695	3.647	3.501	3.517	3.578	3.600	3.582	3.530	3.494
78.0	3.042	3.014	2.966	2.803	2.831	2.908	2.914	2.918	2.832	2.812
81.0	2.379	2.345	2.291	2.110	2.144	2.181	2.227	2.202	2.127	2.091
84.0	1.734	1.699	1.628	1.447	1.476	1.541	1.552	1.534	1.447	1.422
87.0	1.169	1.073	0.9648	0.7611	0.8064	0.8909	0.9314	0.9111	0.7608	0.7530
90.0	0.7699	0.6623	0.5118	0.2582	0.4059	0.5214	0.5271	0.5114	0.2929	0.1828
93.0	0.5344	0.4342	0.3991	0.2640	0.3170	0.3286	0.2933	0.2996	0.2406	0.1760
96.0	0.4988	0.4342	0.3932	0.2699	0.3169	0.3286	0.2875	0.2818	0.2406	0.1760
99.0	0.4929	0.4283	0.3873	0.2816	0.3169	0.3286	0.2875	0.2816	0.2406	0.1760
102.0	0.4929	0.4283	0.3697	0.2875	0.3169	0.3286	0.2875	0.2816	0.2464	0.1760
105.0	0.4870	0.4165	0.3638	0.2817	0.3169	0.3286	0.2875	0.2758	0.2464	0.1760
108.0	0.4753	0.4107	0.3579	0.2875	0.3169	0.3286	0.2875	0.2758	0.2523	0.1760
111.0	0.4635	0.4049	0.3463	0.2875	0.3169	0.3286	0.2875	0.2758	0.2523	0.1760
114.0	0.4577	0.3990	0.3403	0.2875	0.3169	0.3286	0.2875	0.2758	0.2582	0.1760
117.0	0.4518	0.3814	0.3461	0.2875	0.3169	0.3286	0.2875	0.2758	0.2583	0.1760
120.0	0.4401	0.3579	0.3228	0.2875	0.3169	0.3286	0.2875	0.2758	0.2640	0.1760
123.0	0.4459	0.3520	0.3227	0.2934	0.3169	0.3286	0.2875	0.2758	0.2641	0.1760
126.0	0.4342	0.3462	0.3227	0.2934	0.3169	0.3286	0.2875	0.2758	0.2700	0.1935
129.0	0.4283	0.3403	0.3227	0.2934	0.3169	0.3286	0.2875	0.2758	0.2758	0.2111
132.0	0.4225	0.3227	0.3169	0.3051	0.3169	0.3286	0.2875	0.2758	0.2875	0.2171
135.0	0.4166	0.3227	0.3169	0.3110	0.3169	0.3286	0.2875	0.2758	0.2817	0.2230
138.0	0.4108	0.3227	0.3169	0.3110	0.3169	0.3286	0.2875	0.2758	0.2876	0.2230
141.0	0.3991	0.3227	0.3169	0.3110	0.3169	0.3286	0.2875	0.2758	0.2934	0.2230
144.0	0.3932	0.3227	0.3169	0.3169	0.3169	0.3286	0.2875	0.2758	0.2992	0.2230
147.0	0.3873	0.3227	0.3169	0.3228	0.3169	0.3286	0.2875	0.2758	0.3109	0.2230
150.0	0.3814	0.3227	0.3169	0.3286	0.3169	0.3286	0.2875	0.2758	0.3110	0.2347
153.0	0.3755	0.3227	0.3169	0.3345	0.3169	0.3286	0.2875	0.2758	0.3169	0.2406
156.0	0.3697	0.3227	0.3227	0.3345	0.3169	0.3286	0.2875	0.2758	0.3169	0.2464
159.0	0.3697	0.3227	0.3227	0.3345	0.3169	0.3286	0.2875	0.2758	0.3285	0.2523
162.0	0.3638	0.3228	0.3227	0.3345	0.3169	0.3286	0.2875	0.2758	0.3229	0.2582
165.0	0.3579	0.3286	0.3227	0.3345	0.3169	0.3286	0.2875	0.2874	0.3286	0.2640
168.0	0.3347	0.3286	0.3227	0.3345	0.3227	0.3286	0.2875	0.2816	0.3403	0.2757
171.0	0.3286	0.3286	0.3227	0.3345	0.3227	0.3286	0.2875	0.2933	0.3345	0.2875
174.0	0.3227	0.3286	0.3227	0.3345	0.3227	0.3286	0.2875	0.3051	0.3403	0.3108
177.0	0.3227	0.3286	0.3285	0.3345	0.3343	0.3286	0.2875	0.3110	0.3345	0.3051
180.0	0.3227	0.3286	0.3286	0.3345	0.3286	0.3286	0.2875	0.3227	0.3345	0.3227
G/C	300.0	330.0								
0.0	15.61	15.61								
3.0	15.58	15.62								
6.0	15.51	15.58								
9.0	15.38	15.46								
12.0	15.20	15.27								
15.0	14.97	15.02								
18.0	14.69	14.74								
21.0	14.38	14.39								
24.0	14.00	14.01								
27.0	13.59	13.60								
30.0	13.15	13.13								

C Range: 0 - 360DEG
 C Interval: 30.0DEG
 Test Speed: HIGH
 Temperature: 25.3DEG
 Operators: LYH
 Test Date: 2024-08-03

γ Range: 0 - 180DEG
 γ Interval: 1.0DEG
 Test System: EVERFINE GO-2000B_V1 SYSTEM V2.0.269
 Humidity: 65.0%
 Test Distance: 10.000m [K=1.0000]
 Remarks: Red

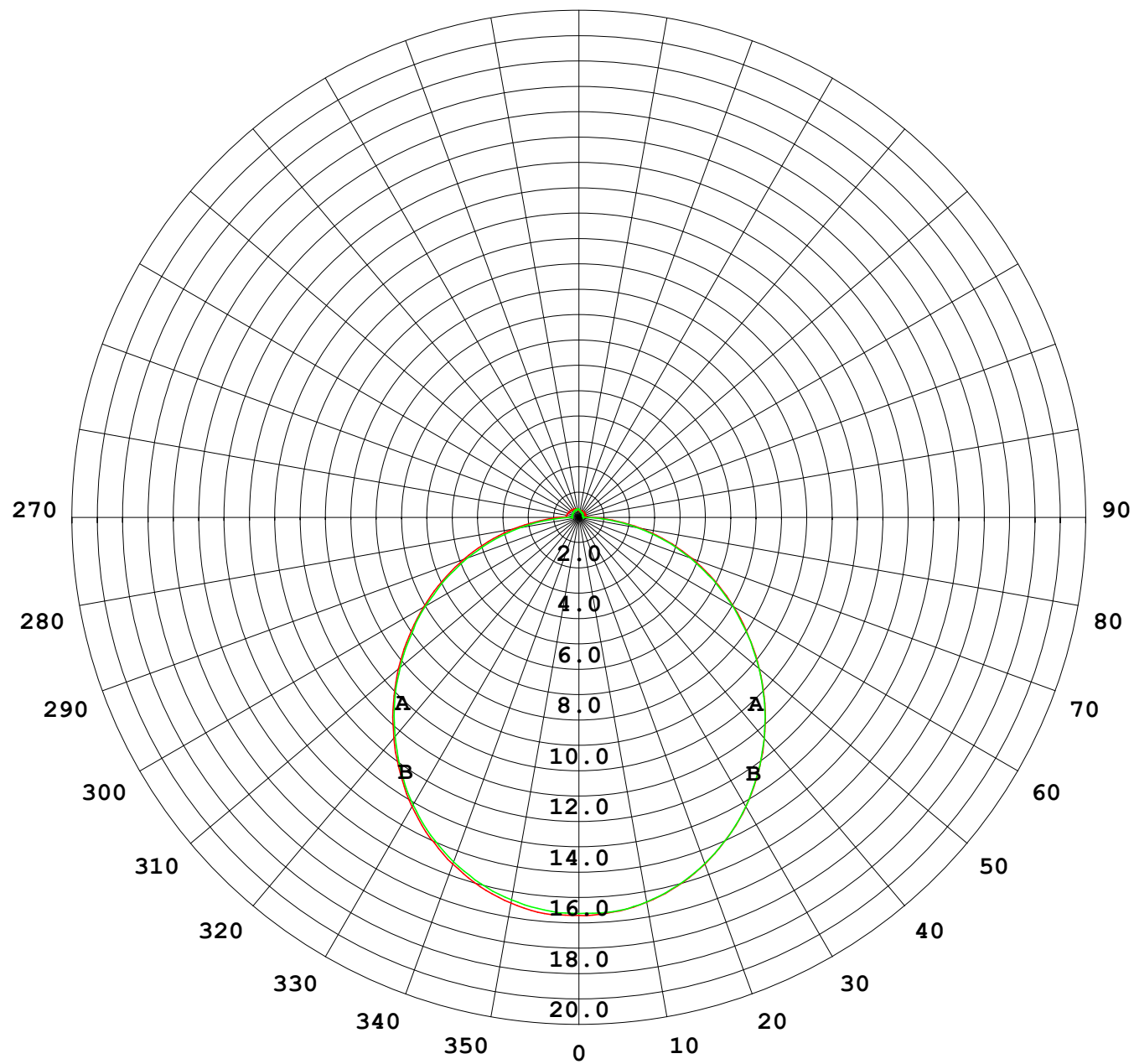
Photometric Data Table [cd]

33.0	12.65	12.63
36.0	12.12	12.12
39.0	11.56	11.57
42.0	10.98	10.96
45.0	10.37	10.36
48.0	9.732	9.736
51.0	9.086	9.085
54.0	8.418	8.428
57.0	7.754	7.770
60.0	7.062	7.084
63.0	6.375	6.410
66.0	5.683	5.735
69.0	4.991	5.048
72.0	4.316	4.385
75.0	3.612	3.705
78.0	2.879	3.018
81.0	2.186	2.361
84.0	1.546	1.715
87.0	0.8840	1.087
90.0	0.3864	0.6699
93.0	0.2406	0.4229
96.0	0.2406	0.3874
99.0	0.2406	0.3873
102.0	0.2523	0.3755
105.0	0.2583	0.3523
108.0	0.2640	0.3110
111.0	0.2640	0.3110
114.0	0.2640	0.3110
117.0	0.2640	0.3110
120.0	0.2641	0.3110
123.0	0.2699	0.3110
126.0	0.2758	0.3110
129.0	0.2816	0.3110
132.0	0.2818	0.3110
135.0	0.2875	0.3110
138.0	0.2876	0.3110
141.0	0.2934	0.3110
144.0	0.2992	0.3110
147.0	0.2992	0.3110
150.0	0.3051	0.3110
153.0	0.3169	0.3110
156.0	0.3169	0.3110
159.0	0.3169	0.3110
162.0	0.3228	0.3110
165.0	0.3286	0.3110
168.0	0.3286	0.3110
171.0	0.3286	0.3110
174.0	0.3286	0.3110
177.0	0.3286	0.3110
180.0	0.3286	0.3227

C Range: 0 - 360DEG
C Interval: 30.0DEG
Test Speed: HIGH
Temperature:25.3DEG
Operators:LYH
Test Date:2024-08-03

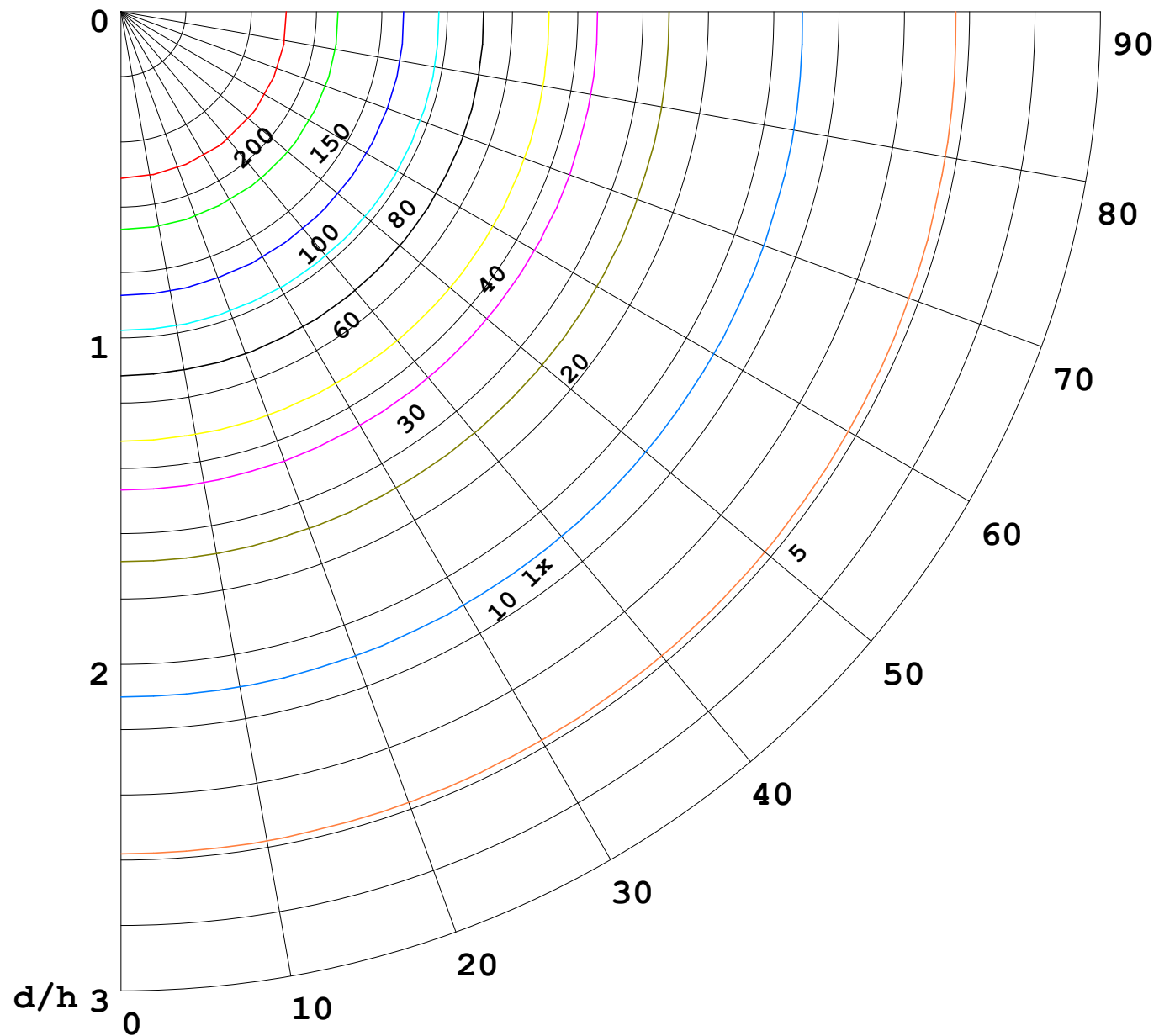
γ Range: 0 - 180DEG
γ Interval: 1.0DEG
Test System:EVERFINE GO-2000B_V1 SYSTEM V2.0.269
Humidity:65.0%
Test Distance:10.000m [K=1.0000]
Remarks: Red

I (cd)



1000 lm

$\kappa = 1$



F = 5000 lm
 K = 0.7
 Hcc = 0.0 m
 Hfc = 0.0 m
 Eave = 100 lx

	Pcc	Pw	Pfc
—	70	50	30
—	50	30	20

