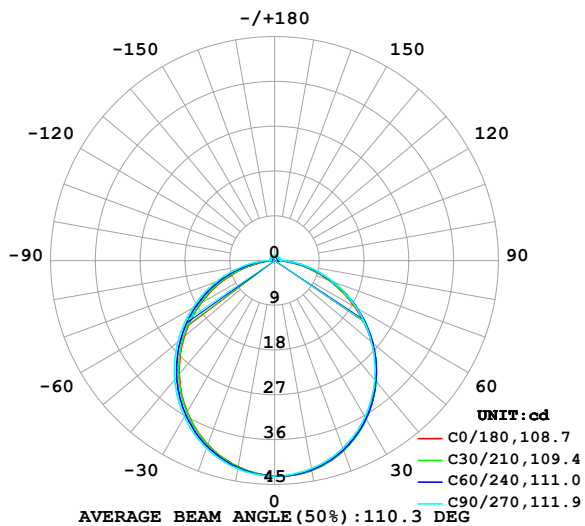


LUMINAIRE PHOTOMETRIC TEST REPORT

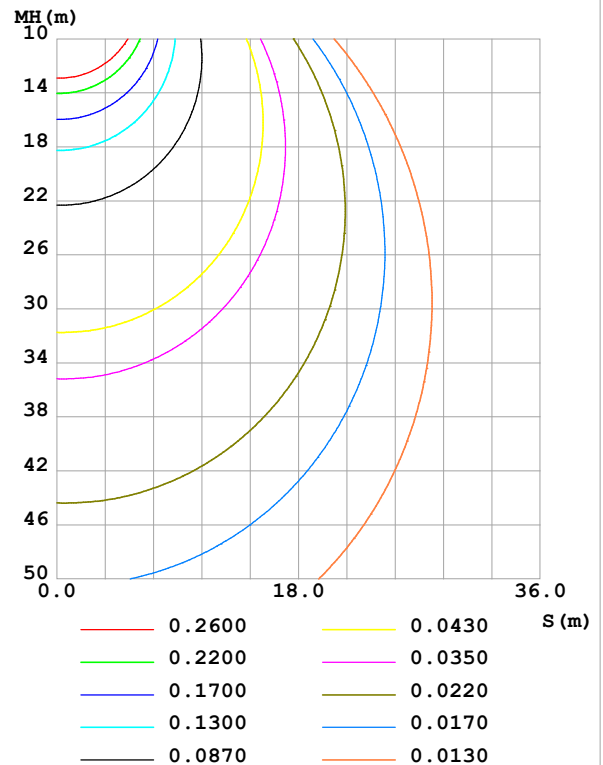
Test:U:24.00V I:0.1785A P:4.284W PF:1.000 Freq:0Hz Lamp Flux:127.017x1 lm		
NAME: SF15-24V-5050-60-RGBW-2200K-G	TYPE:	WEIGHT:
SPEC.:	DIM.: Length=1m	SERIAL No.:
MFR.: Olym pia lighting	SUR.:	Shielding Angle:

DATA OF LAMP		PHOTOMETRIC DATA Eff: 29.66 lm/W			
MODEL	5050	I _{max} (cd)	43.33	S/MH(C0/180)	1.21
NOMINAL POWER(W)		LOR(%)	100.0	S/MH(C90/270)	1.25
RATED VOLTAGE(V)	24	TOTAL FLUX(lm)	127.07	η UP,DN(C0-180)	2.0,48.3
NOMINAL FLUX(lm)	127.017	CIE CLASS	DIRECT	η UP,DN(C180-360)	2.0,47.8
LAMPS INSIDE	1	η up (%)	4.0	CIBSE SHR NOM	1.25
TEST VOLTAGE(V)		η down (%)	96.0	CIBSE SHR MAX	1.35

LUMINOUS INTENSITY DISTRIBUTION DIAGRAM



C0 PLANE ISOLUX DIAGRAM (UNIT:lx)



C Range: 0 - 360DEG
C Interval: 30.0DEG
Test Speed: HIGH
Temperature:25.3℃
Operators:
Test Date:2025-03-11

γ Range: 0 - 180DEG
γ Interval: 1.0DEG
Test System:EVERFINE GO-2000B_V1 SYSTEM V2.00.488
Humidity:65.0%
Test Distance:6.360m [K=1.0000]
Remarks:

ZONAL FLUX DIAGRAM

ZONAL FLUX DIAGRAM:

γ	C0	C45	C90	C135	C180	C225	C270	C315	γ	Φ zone	Φ total	%lum, lamp
10	42.83	42.75	42.46	42.19	42.10	42.20	42.49	42.76	0- 10	4.093	4.093	3.22,3.22
20	40.60	40.53	40.10	39.53	39.32	39.55	40.09	40.54	10- 20	11.69	15.79	12.4,12.4
30	36.74	36.76	36.30	35.47	35.15	35.51	36.25	36.75	20- 30	17.62	33.41	26.3,26.3
40	31.58	31.69	31.31	30.24	29.83	30.31	31.24	31.69	30- 40	21.07	54.47	42.9,42.9
50	25.41	25.66	25.41	24.20	23.71	24.28	25.39	25.65	40- 50	21.64	76.12	59.9,59.9
60	18.62	19.00	19.02	17.65	17.09	17.77	18.99	19.02	50- 60	19.41	95.53	75.2,75.2
70	11.63	12.15	12.45	10.98	10.25	11.12	12.45	12.20	60- 70	14.85	110.4	86.9,86.9
80	5.091	5.668	6.175	4.583	3.774	4.764	6.236	5.724	70- 80	8.845	119.2	93.8,93.9
90	0.4846	0.6513	1.224	0.6554	0.4297	0.7216	1.019	0.7087	80- 90	2.766	122.0	96,96
100	0.4902	0.6455	1.106	0.6835	0.4903	0.7577	0.9963	0.6365	90-100	0.7687	122.8	96.6,96.6
110	0.5651	0.6941	0.9870	0.7433	0.5653	0.8154	1.006	0.7028	100-110	0.7745	123.5	97.2,97.3
120	0.6516	0.7461	0.9103	0.7938	0.6432	0.8535	1.000	0.7505	110-120	0.7655	124.3	97.8,97.9
130	0.7208	0.7908	0.9149	0.8342	0.7181	0.8869	0.9918	0.7981	120-130	0.7273	125.0	98.4,98.4
140	0.7815	0.8384	0.9356	0.8793	0.7960	0.9183	0.9925	0.8544	130-140	0.6585	125.7	98.9,99
150	0.8507	0.8904	0.9818	0.9381	0.8681	0.9510	0.9933	0.9121	140-150	0.5630	126.2	99.4,99.4
160	0.9314	0.9453	1.011	0.9725	0.9430	0.9928	1.012	0.9713	150-160	0.4387	126.7	99.7,99.7
170	0.9788	0.9958	1.025	1.010	0.9891	1.019	1.033	1.017	160-170	0.2807	127.0	99.9,100
180	1.001	1.029	1.040	1.035	1.001	1.030	1.040	1.035	170-180	0.0970	127.1	100,100
DEG	LUMINOUS INTENSITY:cd									UNIT:lm		

Conical surface Flux(90deg): 65.405 lm

%lum = 51.5%

%lamp = 51.5%

Conical surface Flux(130deg): 103.64 lm

%lum = 81.6%

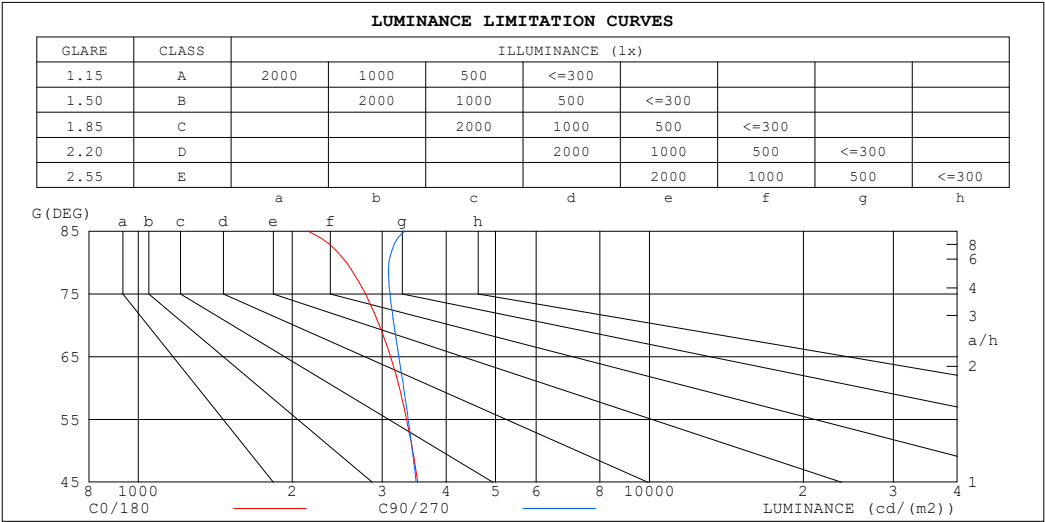
%lamp = 81.6%

C Range: 0 - 360DEG
 C Interval: 30.0DEG
 Test Speed: HIGH
 Temperature:25.3℃
 Operators:
 Test Date:2025-03-11

γ Range: 0 - 180DEG
 γ Interval: 1.0DEG
 Test System:EVERFINE GO-2000B_V1 SYSTEM V2.00.488
 Humidity:65.0%
 Test Distance:6.360m [K=1.0000]
 Remarks:

LUMINANCE LIMITATION CURVES

Test:U:24.00V I:0.1785A P:4.284W PF:1.000 Freq:0Hz Lamp Flux:127.017x1 lm		
NAME: SF15-24V-5050-60-RGBW-2200K-G	TYPE:	WEIGHT:
SPEC.:	DIM.: Length=1m	SERIAL No.:
MFR.: OLympia lighting	SUR.:	Shielding Angle:



LUMINANCE cd/(m2)		
G (DEG)	C0/180	C90/270
85	2144	3321
80	2551	3090
75	2782	3108
70	2960	3163
65	3115	3233
60	3241	3306
55	3349	3371
50	3441	3436
45	3520	3495

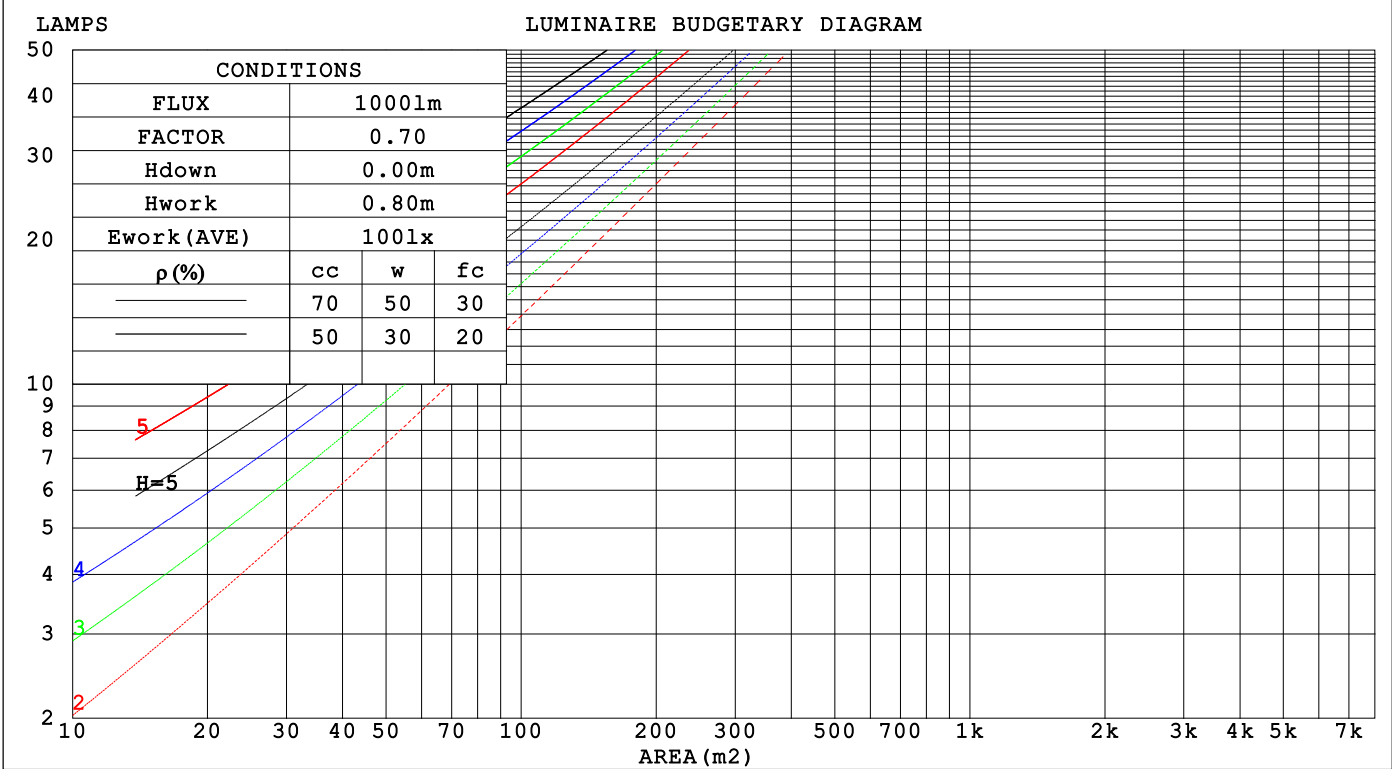
C Range: 0 - 360DEG
C Interval: 30.0DEG
Test Speed: HIGH
Temperature:25.3℃
Operators:
Test Date:2025-03-11

γ Range: 0 - 180DEG
γ Interval: 1.0DEG
Test System:EVERFINE GO-2000B_V1 SYSTEM V2.00.488
Humidity:65.0%
Test Distance:6.360m [K=1.0000]
Remarks:

CU AND LUMINAIRE BUDGETARY ESTIMATE DIAGRAM

Test:U:24.00V I:0.1785A P:4.284W PF:1.000 Freq:0Hz		
Lamp Flux:127.017x1 lm		
NAME: SF15-24V-5050-60-RGBW-2200K-G	TYPE:	WEIGHT:
SPEC.:	DIM.: Length=1m	SERIAL No.:
MFR.: OLYMPIA lighting	SUR.:	Shielding Angle:

pcc	80%			70%			50%			30%			10%			0
p _w	50%	30%	10%	50%	30%	10%	50%	30%	10%	50%	30%	10%	50%	30%	10%	0
p _{fc}	20%			20%			20%			20%			20%			0
RCR	RCR:Room Cavity Ratio															



C Range: 0 - 360DEG

C Interval: 30.0DEG

Test Speed: HIGH

Temperature:25.3℃

Operators:

Test Date:2025-03-11

γ Range: 0 - 180DEG

γ Interval: 1.0DEG

Test System:EVERFINE GO-2000B_V1 SYSTEM V2.00.488

Humidity:65.0%

Test Distance:6.360m [K=1.0000]

Remarks:

WEC AND CCEC

Test:U:24.00V I:0.1785A P:4.284W PF:1.000 Freq:0Hz Lamp Flux:127.017x1 lm		
NAME: SF15-24V-5050-60-RGBW-2200K-G	TYPE:	WEIGHT:
SPEC.:	DIM.: Length=1m	SERIAL No.:
MFR.: OLympia lighting	SUR.:	Shielding Angle:

pcc	80%			70%			50%			30%			10%			0														
pw	50%	30%	10%	50%	30%	10%	50%	30%	10%	50%	30%	10%	50%	30%	10%	0														
pfc	20%			20%			20%			20%			20%			0														
RCR	RCR:Room Cavity Ratio															Wall Exitance Coefficients(WEC)														
0.0																														
1.0	.312	.177	.056	.304	.173	.055	.288	.165	.053	.274	.158	.051	.261	.151	.049															
2.0	.292	.160	.049	.284	.157	.048	.271	.150	.047	.258	.145	.045	.246	.139	.044															
3.0	.269	.143	.043	.263	.141	.042	.250	.136	.041	.239	.131	.040	.228	.126	.039															
4.0	.248	.129	.038	.242	.127	.037	.231	.123	.037	.221	.119	.036	.212	.115	.035															
5.0	.229	.117	.034	.224	.115	.033	.214	.111	.033	.205	.108	.032	.196	.105	.032															
6.0	.212	.106	.030	.208	.105	.030	.199	.102	.030	.191	.099	.029	.183	.096	.029															
7.0	.198	.098	.028	.193	.096	.027	.185	.094	.027	.178	.091	.027	.171	.089	.026															
8.0	.185	.090	.025	.181	.089	.025	.174	.087	.025	.167	.085	.024	.160	.082	.024															
9.0	.173	.084	.023	.170	.083	.023	.163	.081	.023	.157	.079	.023	.151	.077	.022															
10.0	.163	.078	.022	.159	.077	.021	.154	.075	.021	.148	.073	.021	.143	.072	.021															

pcc	80%			70%			50%			30%			10%			0
pw	50%	30%	10%	50%	30%	10%	50%	30%	10%	50%	30%	10%	50%	30%	10%	0
pfc	20%			20%			20%			20%			20%			0
RCR	RCR:Room Cavity Ratio						Ceiling Cavity Exitance Coefficients (CCEC)									
0.0	.221	.221	.221	.189	.189	.189	.129	.129	.129	.074	.074	.074	.024	.024	.024	
1.0	.211	.187	.165	.181	.160	.142	.124	.110	.098	.071	.064	.057	.023	.021	.018	
2.0	.203	.163	.129	.174	.140	.111	.119	.097	.078	.069	.056	.046	.022	.018	.015	
3.0	.195	.145	.106	.168	.125	.091	.115	.087	.064	.066	.051	.038	.021	.017	.012	
4.0	.188	.132	.090	.161	.114	.078	.111	.080	.055	.064	.047	.032	.021	.015	.011	
5.0	.180	.122	.079	.155	.105	.068	.107	.074	.048	.062	.043	.029	.020	.014	.009	
6.0	.173	.114	.071	.149	.098	.062	.103	.069	.044	.060	.040	.026	.019	.013	.009	
7.0	.166	.107	.065	.143	.093	.057	.099	.065	.040	.057	.038	.024	.019	.013	.008	
8.0	.160	.101	.060	.138	.088	.053	.095	.061	.037	.055	.036	.022	.018	.012	.007	
9.0	.154	.096	.057	.133	.083	.050	.092	.059	.035	.054	.035	.021	.017	.011	.007	
10.0	.148	.092	.054	.128	.080	.047	.089	.056	.034	.052	.033	.020	.017	.011	.007	

C Range: 0 - 360DEG
C Interval: 30.0DEG
Test Speed: HIGH
Temperature:25.3℃
Operators:
Test Date:2025-03-11

γ Range: 0 - 180DEG
γ Interval: 1.0DEG
Test System:EVERFINE GO-2000B_V1 SYSTEM V2.00.488
Humidity:65.0%
Test Distance:6.360m [K=1.0000]
Remarks:

UGR(Unified Glare Rating) Table

Test:U:24.00V I:0.1785A P:4.284W PF:1.000 Freq:0Hz Lamp Flux:127.017x1 lm										
NAME: SF15-24V-5050-60-RGBW-2200K-G					TYPE:			WEIGHT:		
SPEC.:					DIM.: Length=1m			SERIAL No.:		
MFR.: OLympia lighting					SUR.:			Shielding Angle:		
ceiling/cavity	0.7	0.7	0.5	0.5	0.3	0.7	0.7	0.5	0.5	0.3
walls	0.5	0.3	0.5	0.3	0.3	0.5	0.3	0.5	0.3	0.3
working plane	0.2	0.2	0.2	0.2	0.2	0.2	0.2	0.2	0.2	0.2
Room dimensions	Viewed crosswise					Viewed endwise				
x = 2H y = 2H	22.7	24.2	23.0	24.4	24.7	22.8	24.3	23.1	24.5	24.8
3H	24.2	25.6	24.6	25.9	26.2	24.4	25.7	24.7	26.0	26.4
4H	24.8	26.1	25.2	26.4	26.8	25.1	26.4	25.5	26.7	27.0
6H	25.3	26.5	25.7	26.8	27.2	25.7	26.9	26.1	27.2	27.6
8H	25.4	26.6	25.8	26.9	27.3	25.9	27.1	26.3	27.4	27.8
12H	25.5	26.6	25.9	27.0	27.4	26.1	27.2	26.5	27.6	27.9
4H 2H	23.3	24.6	23.7	24.9	25.3	23.4	24.7	23.8	25.0	25.3
3H	25.0	26.1	25.4	26.5	26.9	25.2	26.3	25.6	26.7	27.1
4H	25.8	26.8	26.2	27.2	27.6	26.0	27.0	26.5	27.4	27.9
6H	26.3	27.2	26.8	27.7	28.1	26.7	27.6	27.2	28.1	28.5
8H	26.5	27.4	27.0	27.8	28.3	27.0	27.9	27.5	28.3	28.8
12H	26.7	27.5	27.2	27.9	28.4	27.3	28.1	27.8	28.5	29.0
8H 4H	26.1	26.9	26.5	27.3	27.8	26.3	27.1	26.8	27.6	28.1
6H	26.8	27.5	27.3	28.0	28.5	27.2	27.9	27.7	28.4	28.9
8H	27.1	27.7	27.6	28.2	28.8	27.6	28.2	28.1	28.7	29.2
12H	27.3	27.9	27.9	28.4	28.9	27.9	28.5	28.5	29.0	29.6
12H 4H	26.1	26.9	26.6	27.3	27.8	26.3	27.1	26.8	27.5	28.0
6H	26.9	27.5	27.4	28.0	28.6	27.3	27.9	27.8	28.4	28.9
8H	27.2	27.8	27.8	28.3	28.9	27.7	28.2	28.2	28.8	29.3
Variations with the observer position at spacings(CIE Pub.117):										
S = 1.0H	+ 0.1 / - 0.2					+ 0.1 / - 0.2				
1.5H	+ 0.2 / - 0.3					+ 0.2 / - 0.3				
2.0H	+ 0.1 / - 0.3					+ 0.1 / - 0.3				

CIE Pub.117, 127.0 lm Total Lamp Luminous Flux Correct (8log(F/F0) = -7.2)
Area: 0.0115 m2

C Range: 0 - 360DEG
C Interval: 30.0DEG
Test Speed: HIGH
Temperature:25.3℃
Operators:
Test Date:2025-03-11

γ Range: 0 - 180DEG
γ Interval: 1.0DEG
Test System:EVERFINE GO-2000B_V1 SYSTEM V2.00.488
Humidity:65.0%
Test Distance:6.360m [K=1.0000]
Remarks:

UTILIZATION FACTORS TABLE

Test:U:24.00V I:0.1785A P:4.284W PF:1.000 Freq:0Hz Lamp Flux:127.017x1 lm		
NAME: SF15-24V-5050-60-RGBW-2200K-G	TYPE:	WEIGHT:
SPEC.:	DIM.: Length=1m	SERIAL No.:
MFR.: OLympia lighting	SUR.:	Shielding Angle:

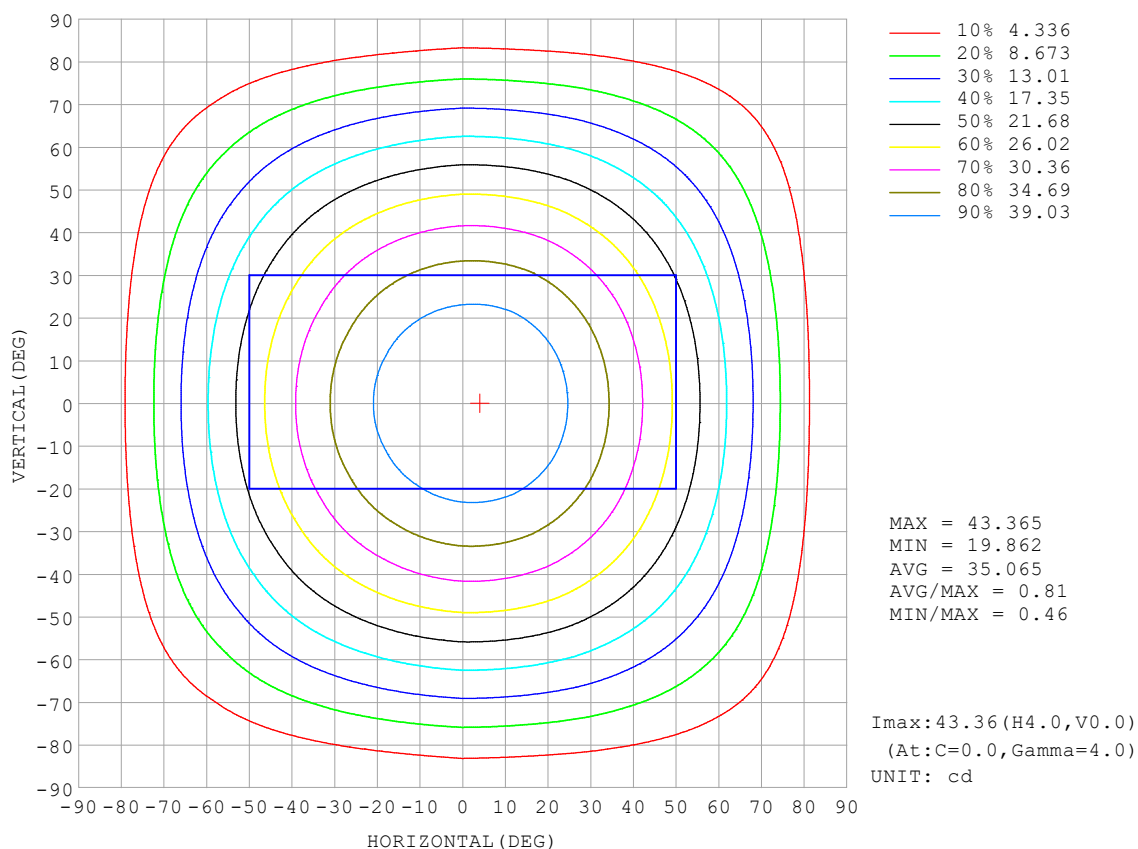
REFLECTANCE										
Ceiling	0.8	0.8	0.8	0.7	0.7	0.7	0.5	0.5	0.5	0
Walls	0.7	0.5	0.3	0.7	0.5	0.3	0.7	0.5	0.3	0
Working plane	0.2	0.2	0.2	0.2	0.2	0.2	0.2	0.2	0.2	0
ROOM INDEX	UTILIZATION FACTORS (PERCENT) $k(RI) \times RCR = 5$									
$k = 0.60$	56	45	38	56	45	38	54	44	37	31
0.80	66	55	47	65	54	47	63	53	47	39
1.00	75	63	56	73	63	56	71	64	55	48
1.25	82	71	64	80	70	63	77	68	62	54
1.50	87	77	70	85	76	69	81	73	68	59
2.00	94	85	78	91	83	77	87	81	75	67
2.50	98	90	83	95	88	82	91	85	80	71
3.00	101	94	88	98	92	87	94	89	84	75
4.00	105	99	94	102	97	93	97	93	89	79
5.00	107	102	98	105	100	96	99	96	93	82
ROOM INDEX	UF (total)									Direct
According to DIN EN 13032-2 2004			Suspended					SHRNOM = 1.25		

C Range: 0 - 360DEG
 C Interval: 30.0DEG
 Test Speed: HIGH
 Temperature: 25.3°C
 Operators:
 Test Date: 2025-03-11

γ Range: 0 - 180DEG
 γ Interval: 1.0DEG
 Test System: EVERFINE GO-2000B_V1 SYSTEM V2.00.488
 Humidity: 65.0%
 Test Distance: 6.360m [K=1.0000]
 Remarks:

ISOCANDELA DIAGRAM

Test:U:24.00V I:0.1785A P:4.284W PF:1.000 Freq:0Hz Lamp Flux:127.017x1 lm		
NAME: SF15-24V-5050-60-RGBW-2200K-G	TYPE:	WEIGHT:
SPEC.:	DIM.: Length=1m	SERIAL No.:
MFR.: OLympia lighting	SUR.:	Shielding Angle:

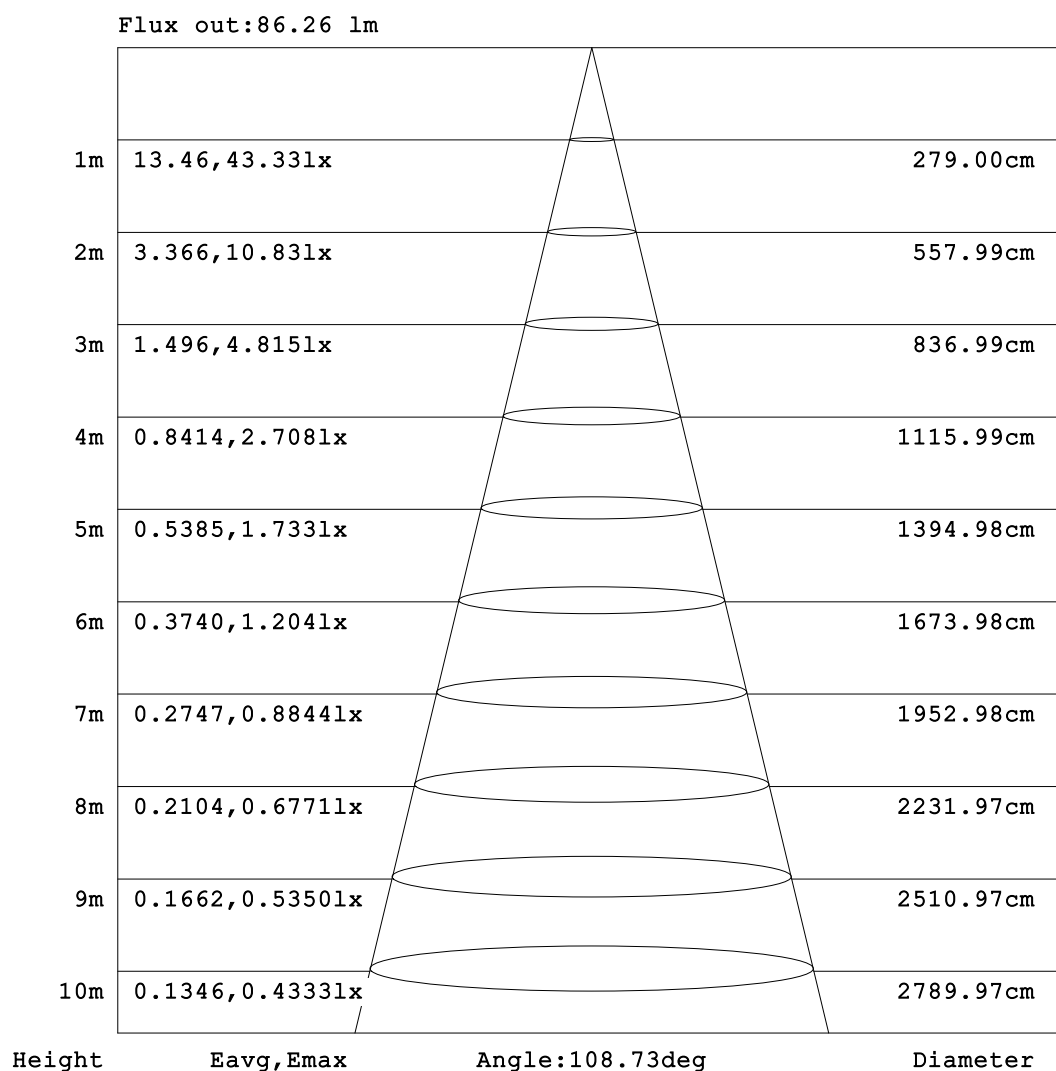


C Range: 0 - 360DEG
C Interval: 30.0DEG
Test Speed: HIGH
Temperature:25.3℃
Operators:
Test Date:2025-03-11

γ Range: 0 - 180DEG
γ Interval: 1.0DEG
Test System:EVERFINE GO-2000B_V1 SYSTEM V2.00.488
Humidity:65.0%
Test Distance:6.360m [K=1.0000]
Remarks:

AAI Figure

Test:U:24.00V I:0.1785A P:4.284W PF:1.000 Freq:0Hz Lamp Flux:127.017x1 lm		
NAME: SF15-24V-5050-60-RGBW-2200K-G	TYPE:	WEIGHT:
SPEC.:	DIM.: Length=1m	SERIAL No.:
MFR.: OLympia lighting	SUR.:	Shielding Angle:



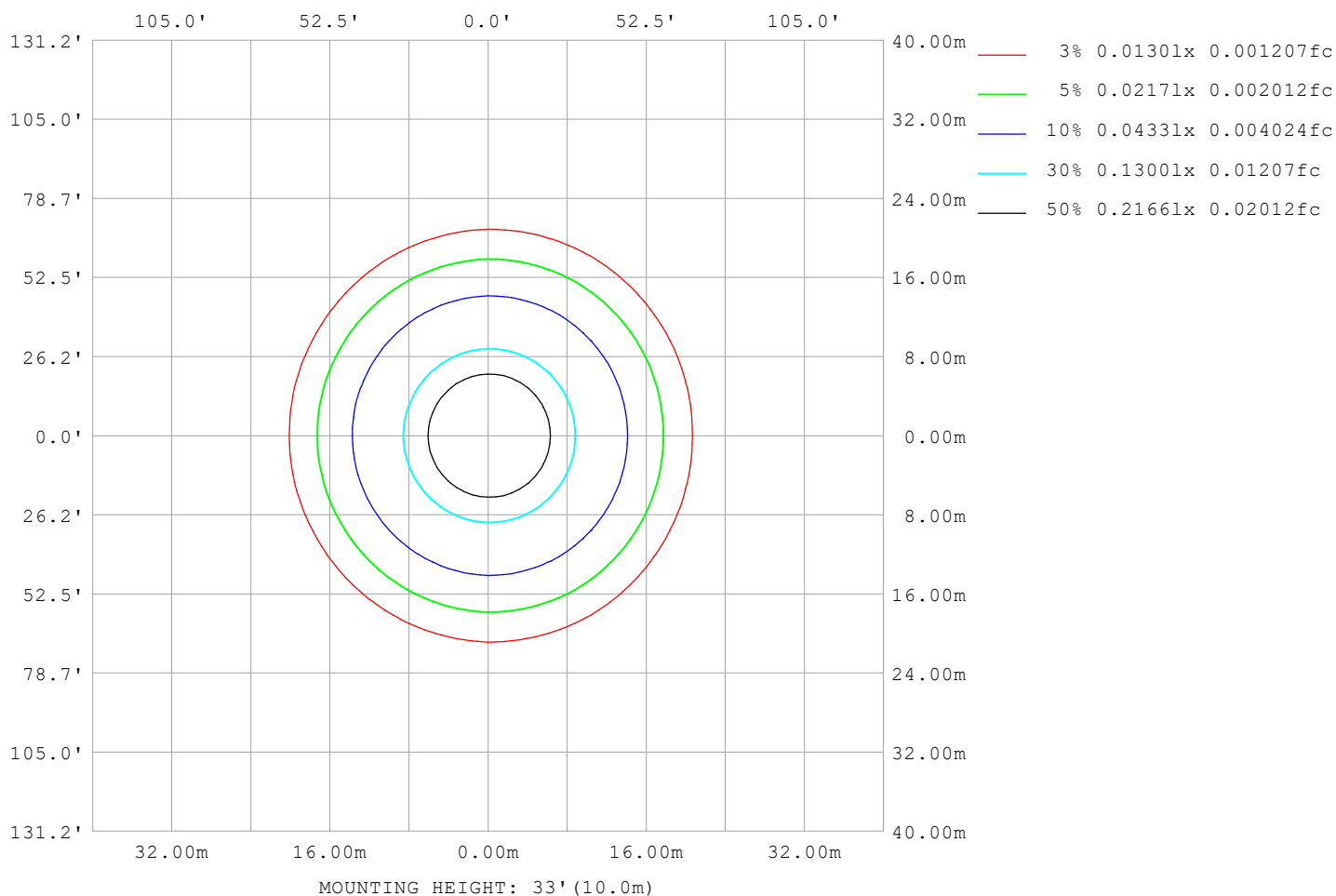
Note:The Curves indicate the illuminated area and the average illumination when the luminaire is at different distance.

C Range: 0 - 360DEG
C Interval: 30.0DEG
Test Speed: HIGH
Temperature:25.3℃
Operators:
Test Date:2025-03-11

γ Range: 0 - 180DEG
γ Interval: 1.0DEG
Test System:EVERFINE GO-2000B_V1 SYSTEM V2.00.488
Humidity:65.0%
Test Distance:6.360m [K=1.0000]
Remarks:

ISOLUX DIAGRAM

Test:U:24.00V I:0.1785A P:4.284W PF:1.000 Freq:0Hz Lamp Flux:127.017x1 lm		
NAME: SF15-24V-5050-60-RGBW-2200K-G	TYPE:	WEIGHT:
SPEC.:	DIM.: Length=1m	SERIAL No.:
MFR.: OLympia lighting	SUR.:	Shielding Angle:



C Range: 0 - 360DEG
C Interval: 30.0DEG
Test Speed: HIGH
Temperature: 25.3°C
Operators:
Test Date: 2025-03-11

γ Range: 0 - 180DEG
γ Interval: 1.0DEG
Test System: EVERFINE GO-2000B_V1 SYSTEM V2.00.488
Humidity: 65.0%
Test Distance: 6.360m [K=1.0000]
Remarks:

LED Avg.L Report

Test:U:24.00V I:0.1785A P:4.284W PF:1.000 Freq:0Hz Lamp Flux:127.017x1 lm		
NAME: SF15-24V-5050-60-RGBW-2200K-G	TYPE:	WEIGHT:
SPEC.:	DIM.: Length=1m	SERIAL No.:
MFR.: OLympia lighting	SUR.:	Shielding Angle:

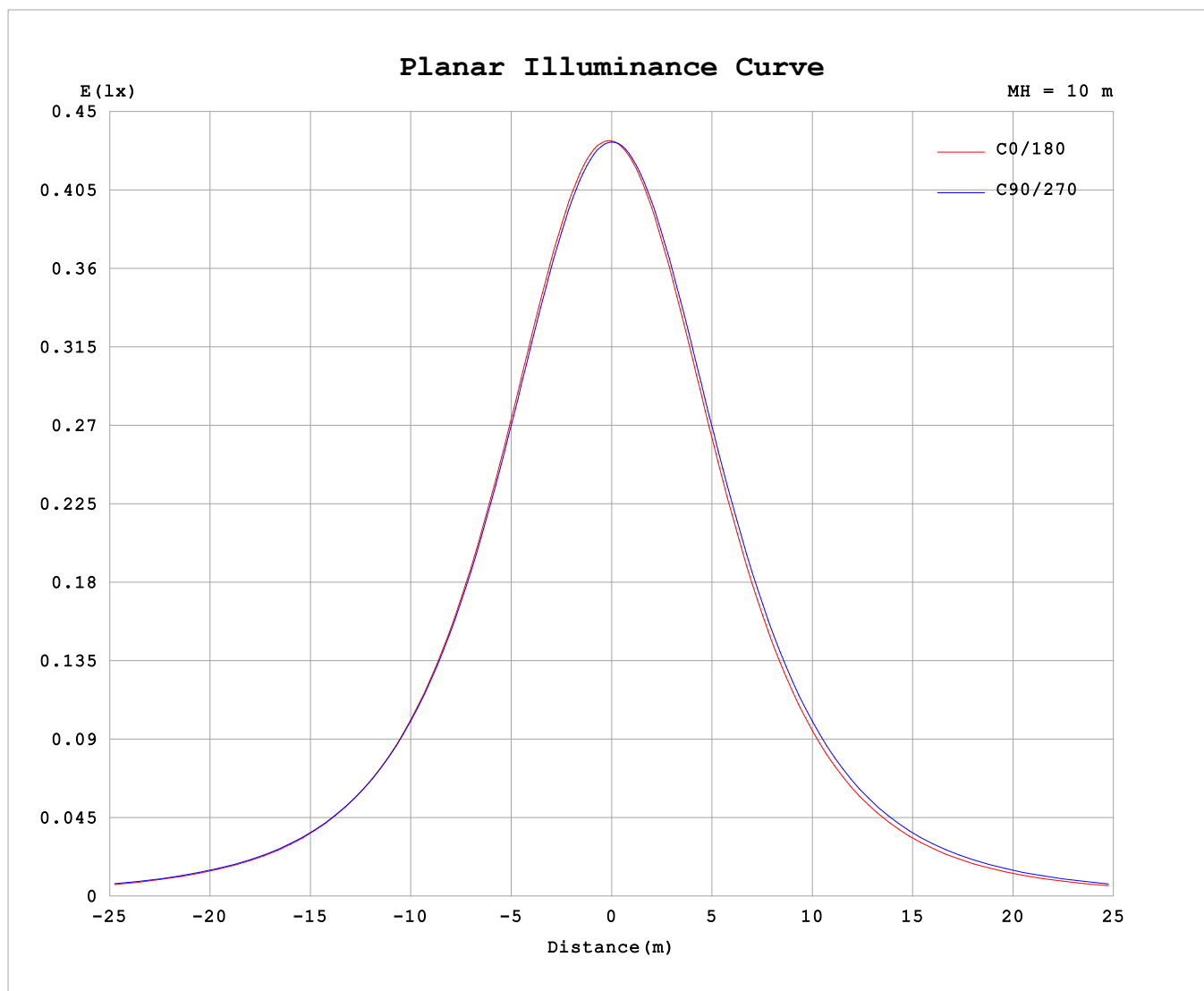
AvgL	cd/m2
L_0~180 (65) av	2963
L_0~180 (75) av	2552
L_0~180 (85) av	1657
L_90~270 (65) av	3234
L_90~270 (75) av	3113
L_90~270 (85) av	3341
L_45 (65) av	3081
L_45 (75) av	2795
L_45 (85) av	2262

Standard: GB/T 29293-2012

C Range: 0 - 360DEG
C Interval: 30.0DEG
Test Speed: HIGH
Temperature:25.3℃
Operators:
Test Date:2025-03-11

γ Range: 0 - 180DEG
γ Interval: 1.0DEG
Test System:EVERFINE GO-2000B_V1 SYSTEM V2.00.488
Humidity:65.0%
Test Distance:6.360m [K=1.0000]
Remarks:

Planar Illuminance Curve



C Range: 0 - 360DEG
C Interval: 30.0DEG
Test Speed: HIGH
Temperature: 25.3 °C
Operators:
Test Date: 2025-03-11

γ Range: 0 - 180DEG
 γ Interval: 1.0DEG
Test System: EVERFINE GO-2000B_V1 SYSTEM V2.00.488
Humidity: 65.0%
Test Distance: 6.360m [K=1.0000]
Remarks:

LUMINOUS DISTRIBUTION INTENSITY DATA

Test:U:24.00V I:0.1785A P:4.284W PF:1.000 Freq:0Hz Lamp Flux:127.017x1 lm		
NAME: SF15-24V-5050-60-RGBW-2200K-G	TYPE:	WEIGHT:
SPEC.:	DIM.: Length=1m	SERIAL No.:
MFR.: Olym pia lighting	SUR.:	Shielding Angle:

Table--1

UNIT: cd

C (DEG) γ (DEG)	0	30	60	90	120	150	180	210	240	270	300	330							
0	43.3	43.3	43.3	43.3	43.3	43.3	43.3	43.3	43.3	43.3	43.3	43.3							
5	43.3	43.2	43.2	43.1	43.0	42.9	42.9	42.9	43.0	43.1	43.2	43.3							
10	42.8	42.8	42.7	42.5	42.3	42.1	42.1	42.1	42.3	42.5	42.7	42.8							
15	41.9	41.9	41.8	41.5	41.2	40.9	40.9	40.9	41.2	41.5	41.8	42.0							
20	40.6	40.6	40.5	40.1	39.7	39.4	39.3	39.4	39.7	40.1	40.5	40.6							
25	38.8	38.9	38.8	38.4	37.8	37.5	37.4	37.5	37.9	38.3	38.8	38.9							
30	36.7	36.8	36.7	36.3	35.7	35.3	35.2	35.3	35.8	36.3	36.7	36.8							
35	34.3	34.4	34.4	33.9	33.2	32.7	32.6	32.8	33.3	33.9	34.3	34.4							
40	31.6	31.7	31.7	31.3	30.5	30.0	29.8	30.0	30.6	31.2	31.7	31.7							
45	28.6	28.7	28.8	28.4	27.6	27.0	26.8	27.1	27.7	28.4	28.8	28.7							
50	25.4	25.5	25.8	25.4	24.5	23.8	23.7	23.9	24.6	25.4	25.7	25.6							
55	22.1	22.2	22.5	22.3	21.3	20.6	20.4	20.7	21.5	22.2	22.5	22.3							
60	18.6	18.8	19.2	19.0	18.1	17.2	17.1	17.4	18.2	19.0	19.2	18.9							
65	15.1	15.3	15.8	15.7	14.8	13.9	13.7	14.0	14.9	15.7	15.8	15.4							
70	11.6	11.9	12.4	12.4	11.5	10.5	10.3	10.6	11.6	12.4	12.4	12.0							
75	8.27	8.56	9.10	9.26	8.28	7.19	6.92	7.35	8.41	9.28	9.12	8.65							
80	5.09	5.39	5.94	6.17	5.14	4.03	3.77	4.22	5.31	6.24	5.97	5.48							
85	2.15	2.48	2.98	3.33	2.16	1.34	1.18	1.45	2.38	3.37	3.05	2.52							
90	0.48	0.56	0.75	1.22	0.76	0.55	0.43	0.61	0.83	1.02	0.88	0.54							
95	0.48	0.54	0.72	1.17	0.76	0.57	0.46	0.62	0.85	1.00	0.74	0.51							
100	0.49	0.57	0.72	1.11	0.76	0.61	0.49	0.64	0.88	1.00	0.76	0.51							
105	0.52	0.60	0.73	1.05	0.78	0.65	0.53	0.67	0.91	1.01	0.80	0.55							
110	0.57	0.63	0.75	0.99	0.81	0.68	0.57	0.70	0.93	1.01	0.82	0.58							
115	0.61	0.67	0.78	0.93	0.83	0.71	0.60	0.74	0.94	1.00	0.84	0.61							
120	0.65	0.70	0.79	0.91	0.85	0.74	0.64	0.76	0.95	1.00	0.85	0.65							
125	0.69	0.74	0.80	0.91	0.86	0.77	0.68	0.79	0.95	1.00	0.87	0.68							
130	0.72	0.76	0.82	0.91	0.87	0.80	0.72	0.82	0.95	0.99	0.88	0.71							
135	0.75	0.79	0.83	0.92	0.88	0.83	0.76	0.85	0.96	0.99	0.90	0.75							
140	0.78	0.82	0.85	0.94	0.90	0.86	0.80	0.87	0.97	0.99	0.94	0.77							
145	0.82	0.85	0.88	0.95	0.93	0.89	0.83	0.89	0.98	0.99	0.96	0.81							
150	0.85	0.88	0.90	0.98	0.95	0.92	0.87	0.91	0.99	0.99	0.98	0.85							
155	0.89	0.91	0.94	1.00	0.97	0.95	0.91	0.94	1.01	1.00	1.00	0.89							
160	0.93	0.93	0.96	1.01	0.98	0.97	0.94	0.96	1.03	1.01	1.01	0.93							
165	0.97	0.96	0.98	1.02	0.98	0.99	0.97	0.99	1.03	1.02	1.02	0.96							
170	0.98	1.00	0.99	1.03	1.00	1.02	0.99	1.00	1.03	1.03	1.03	1.00							
175	0.99	1.03	1.01	1.04	1.02	1.04	1.00	1.02	1.04	1.04	1.04	1.01							
180	1.00	1.03	1.03	1.04	1.03	1.04	1.00	1.02	1.04	1.04	1.04	1.03							

C Range: 0 - 360DEG

C Interval: 30.0DEG

Test Speed: HIGH

Temperature:25.3℃

Operators:

Test Date:2025-03-11

γ Range: 0 - 180DEG

γ Interval: 1.0DEG

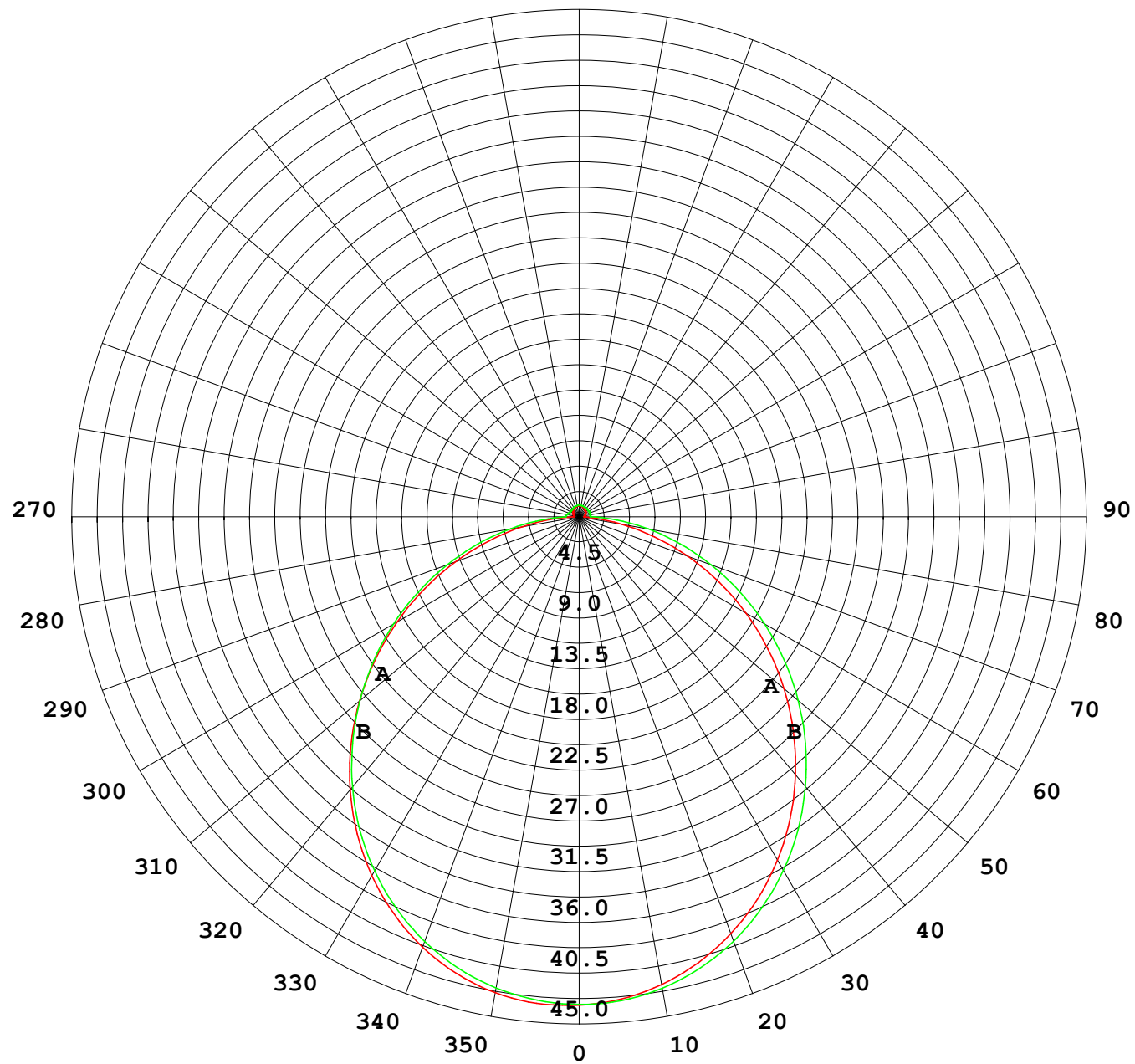
Test System:EVERFINE GO-2000B_V1 SYSTEM V2.00.488

Humidity:65.0%

Test Distance:6.360m [K=1.0000]

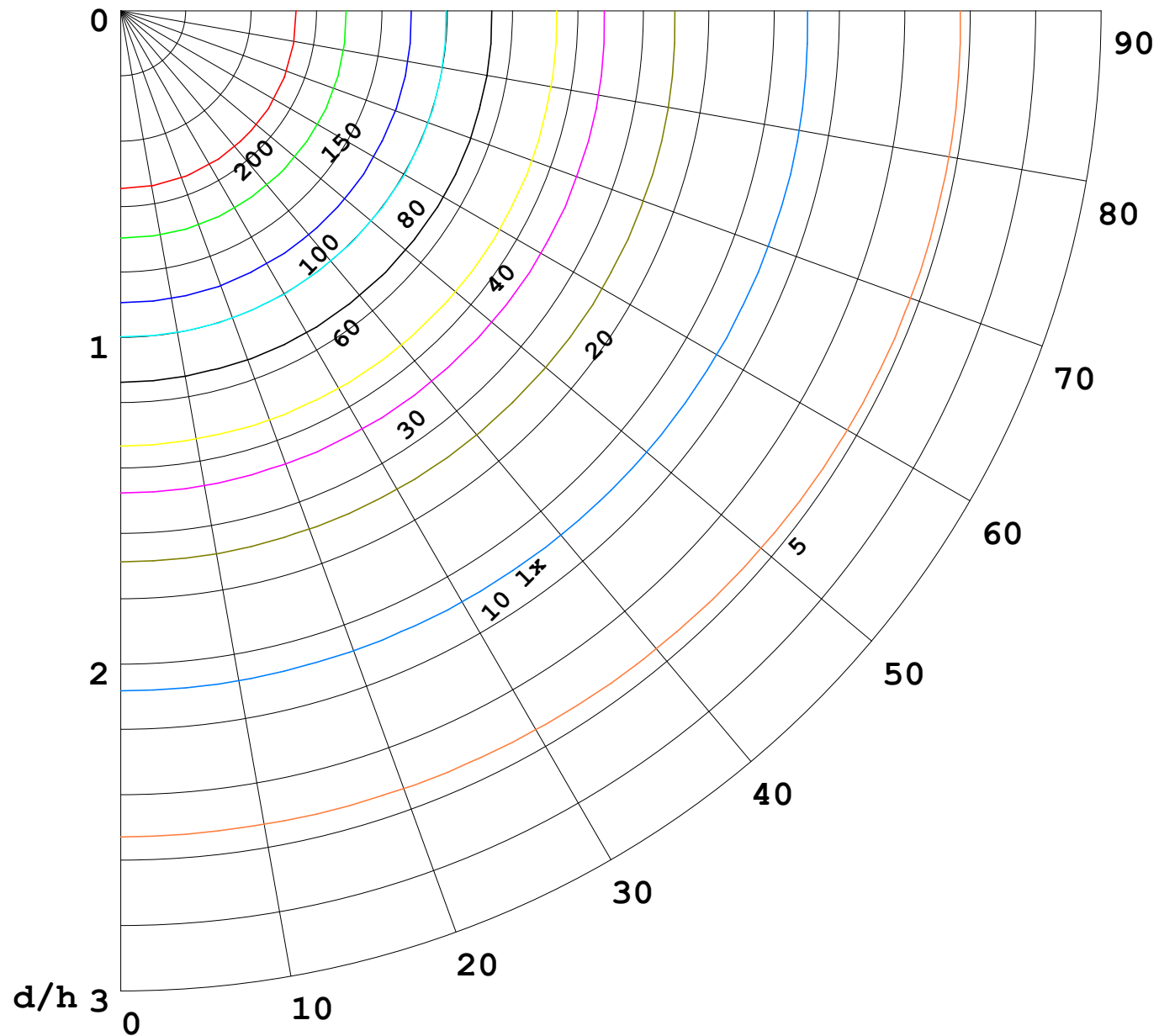
Remarks:

I (cd)



1000 lm

$\kappa = 1$



F = 1000 lm
 K = 0.7
 Hcc = 0.8 m
 Hfc = 0.0 m
 Eave = 100 lx

	Pcc	Pw	Pfc
—	70	50	30
—	50	30	20

