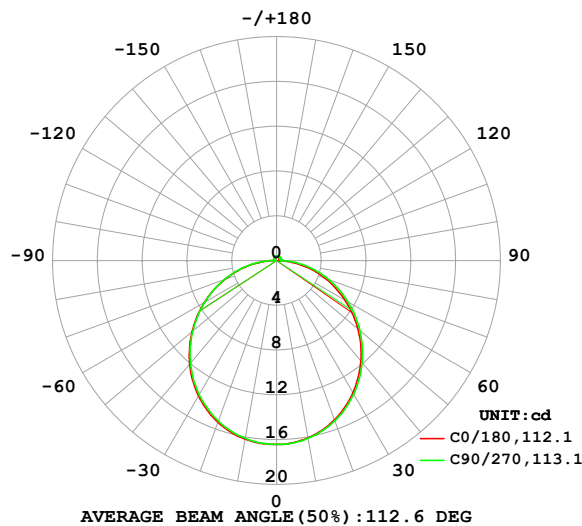


LUMINAIRE PHOTOMETRIC TEST REPORT

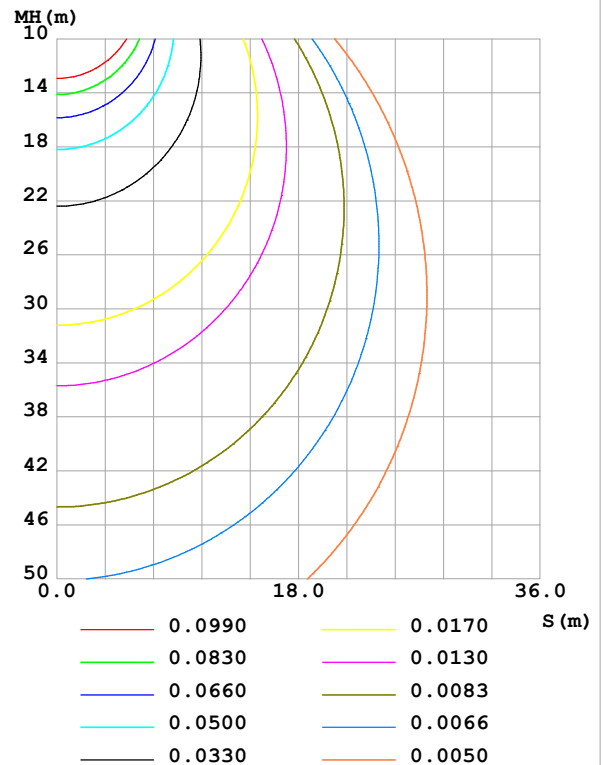
Test:U:24.00V I:0.1614A P:3.874W PF:1.000 Freq:0Hz Lamp Flux:50.2021x1 lm		
NAME: SF15-24V-5050-60-RGBW-80	TYPE:	WEIGHT:
SPEC.:	DIM.: Length=1m	SERIAL No.:
MFR.:	SUR.:	Shielding Angle:

DATA OF LAMP		PHOTOMETRIC DATA Eff: 12.96 lm/W			
MODEL		I _{max} (cd)	16.42	S/MH(C0/180)	1.26
NOMINAL POWER(W)		LOR(%)	100.0	S/MH(C90/270)	1.25
RATED VOLTAGE(V)		TOTAL FLUX(lm)	50.202	η UP,DN(C0-180)	2.2,47.9
NOMINAL FLUX(lm)	50.2021	CIE CLASS	DIRECT	η UP,DN(C180-360)	1.9,48.0
LAMPS INSIDE	1	η up (%)	4.2	CIBSE SHR NOM	1.25
TEST VOLTAGE(V)		η down (%)	95.8	CIBSE SHR MAX	1.35

LUMINOUS INTENSITY DISTRIBUTION DIAGRAM



C0 PLANE ISOLUX DIAGRAM (UNIT:lx)



C Range: 0 - 360DEG
C Interval: 22.5DEG
Test Speed: HIGH
Temperature:25.3℃
Operators:Cloud
Test Date:2024-11-12

γ Range: 0 - 180DEG
γ Interval: 1.0DEG
Test System:EVERFINE GO-2000B_V1 SYSTEM V2.00.488
Humidity:65.0%
Test Distance:6.360m [K=1.0000]
Remarks: RED

ZONAL FLUX DIAGRAM

ZONAL FLUX DIAGRAM:

γ	C0	C45	C90	C135	C180	C225	C270	C315	γ	Φ zone	Φ total	%lum, lamp
10	16.09	16.12	16.13	16.22	16.20	16.19	16.13	16.08	0- 10	1.555	1.555	3.1,3.1
20	15.14	15.20	15.23	15.40	15.37	15.38	15.25	15.14	10- 20	4.452	6.007	12,12
30	13.64	13.74	13.78	14.01	13.97	14.01	13.84	13.65	20- 30	6.732	12.74	25.4,25.4
40	11.72	11.84	11.90	12.15	12.10	12.16	11.96	11.73	30- 40	8.092	20.83	41.5,41.5
50	9.478	9.627	9.715	9.920	9.861	9.958	9.779	9.517	40- 50	8.387	29.22	58.2,58.2
60	7.051	7.236	7.355	7.492	7.426	7.530	7.407	7.127	50- 60	7.644	36.86	73.4,73.4
70	4.598	4.806	4.957	4.980	4.922	5.011	4.960	4.679	60- 70	6.040	42.90	85.5,85.5
80	2.172	2.384	2.574	2.486	2.415	2.491	2.534	2.237	70- 80	3.837	46.74	93.1,93.1
90	0.4043	0.4328	0.3772	0.4417	0.4371	0.3796	0.2632	0.3505	80- 90	1.376	48.12	95.8,95.8
100	0.2690	0.3254	0.3760	0.3423	0.2432	0.2621	0.2864	0.2552	90-100	0.3403	48.46	96.5,96.5
110	0.2690	0.3225	0.3760	0.3423	0.2490	0.2765	0.2979	0.2727	100-110	0.3137	48.77	97.1,97.1
120	0.2919	0.3254	0.3847	0.3423	0.2690	0.2995	0.3181	0.3104	110-120	0.3045	49.07	97.8,97.8
130	0.3176	0.3398	0.3847	0.3452	0.2976	0.3312	0.3356	0.3365	120-130	0.2925	49.37	98.3,98.3
140	0.3433	0.3542	0.3876	0.3597	0.3263	0.3600	0.3674	0.3597	130-140	0.2677	49.63	98.9,98.9
150	0.3663	0.3714	0.3962	0.3771	0.3607	0.3916	0.3934	0.3858	140-150	0.2307	49.86	99.3,99.3
160	0.3863	0.3944	0.4078	0.4003	0.3949	0.4176	0.4223	0.4090	150-160	0.1807	50.05	99.7,99.7
170	0.4063	0.4118	0.4194	0.4090	0.4063	0.4291	0.4339	0.4264	160-170	0.1165	50.16	99.9,99.9
180	0.4063	0.4291	0.4281	0.4235	0.4063	0.4291	0.4339	0.4293	170-180	0.0402	50.20	100,100
DEG	LUMINOUS INTENSITY:cd									UNIT:lm		

Conical surface Flux(90deg): 25.055 lm

%lum = 49.9%

%lamp = 49.9%

Conical surface Flux(130deg): 40.127 lm

%lum = 79.9%

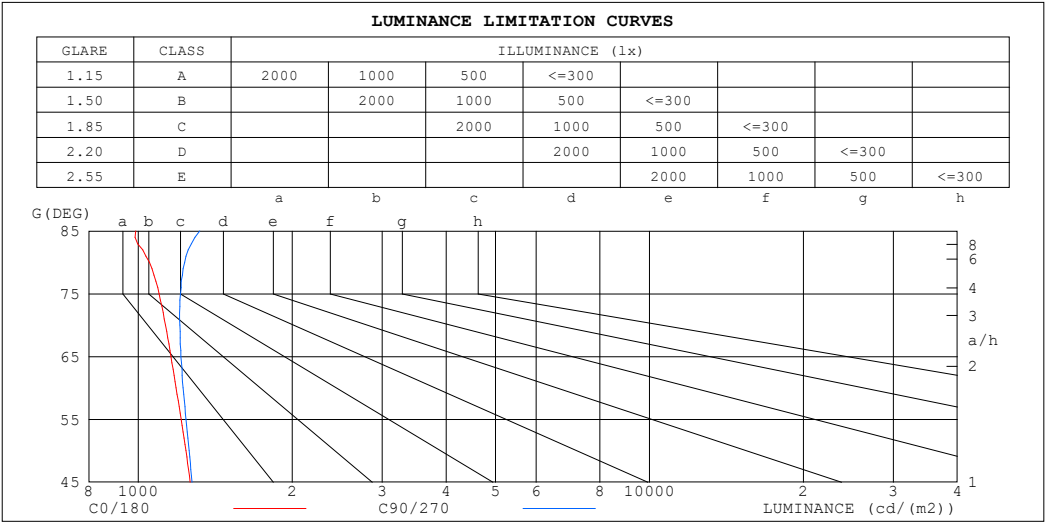
%lamp = 79.9%

C Range: 0 - 360DEG
C Interval: 22.5DEG
Test Speed: HIGH
Temperature:25.3℃
Operators:Cloud
Test Date:2024-11-12

γ Range: 0 - 180DEG
 γ Interval: 1.0DEG
Test System:EVERFINE GO-2000B_V1 SYSTEM V2.00.488
Humidity:65.0%
Test Distance:6.360m [K=1.0000]
Remarks: RED

LUMINANCE LIMITATION CURVES

Test:U:24.00V I:0.1614A P:3.874W PF:1.000 Freq:0Hz Lamp Flux:50.2021x1 lm		
NAME: SF15-24V-5050-60-RGBW-80	TYPE:	WEIGHT:
SPEC.:	DIM.: Length=1m	SERIAL No.:
MFR.:	SUR.:	Shielding Angle:



LUMINANCE cd/(m2)		
G (DEG)	C0/180	C90/270
85	988	1319
80	1051	1233
75	1098	1210
70	1130	1205
65	1159	1212
60	1185	1223
55	1213	1239
50	1239	1257
45	1264	1274

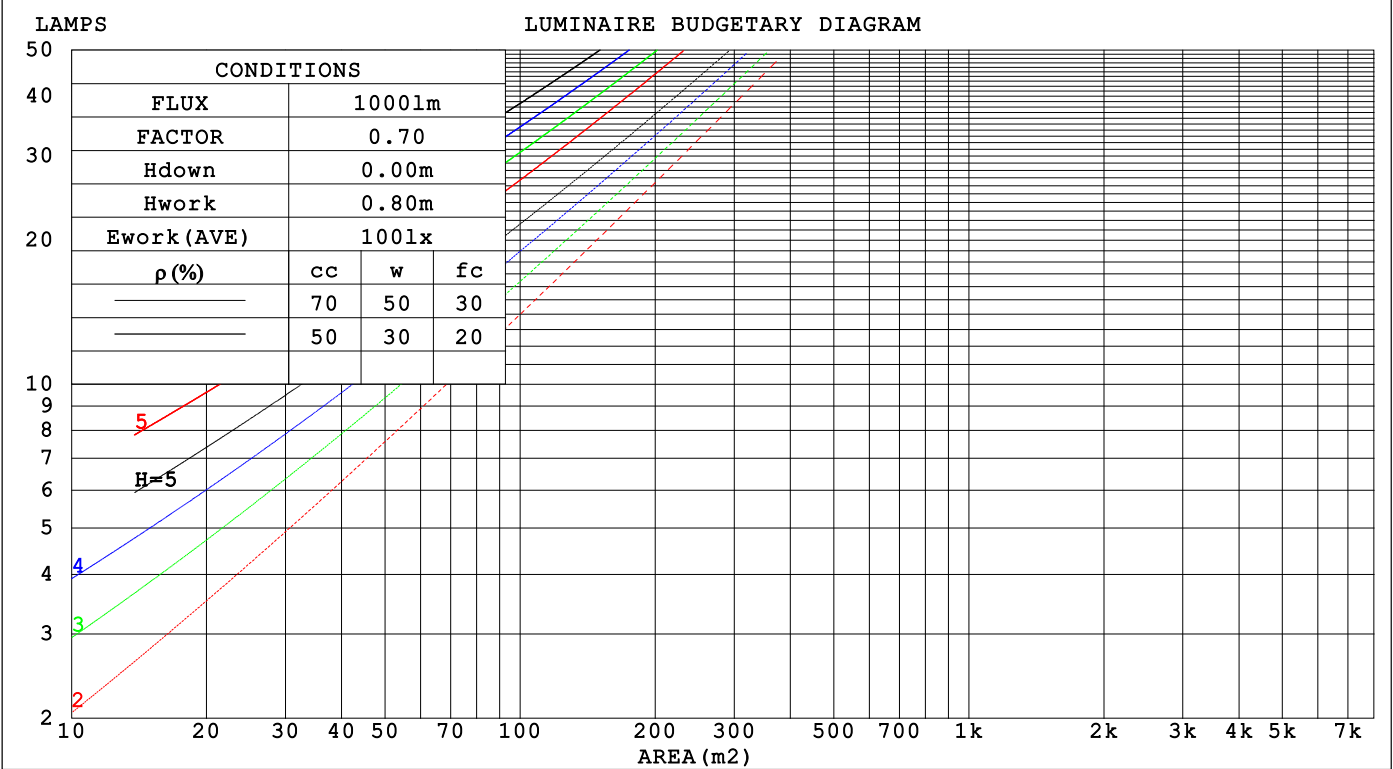
C Range: 0 - 360DEG
C Interval: 22.5DEG
Test Speed: HIGH
Temperature:25.3℃
Operators:Cloud
Test Date:2024-11-12

γ Range: 0 - 180DEG
γ Interval: 1.0DEG
Test System:EVERFINE GO-2000B_V1 SYSTEM V2.00.488
Humidity:65.0%
Test Distance:6.360m [K=1.0000]
Remarks: RED

CU AND LUMINAIRE BUDGETARY ESTIMATE DIAGRAM

Test:U:24.00V I:0.1614A P:3.874W PF:1.000 Freq:0Hz		
Lamp Flux:50.2021x1 lm		
NAME: SF15-24V-5050-60-RGBW-80	TYPE:	WEIGHT:
SPEC.:	DIM.: Length=1m	SERIAL No.:
MFR.:	SUR.:	Shielding Angle:

pcc	80%			70%			50%			30%			10%			0
pw	50%	30%	10%	50%	30%	10%	50%	30%	10%	50%	30%	10%	50%	30%	10%	0
pfc	20%			20%			20%			20%			20%			0
RCR	RCR:Room Cavity Ratio															



C Range: 0 - 360DEG
C Interval: 22.5DEG
Test Speed: HIGH
Temperature:25.3℃
Operators:Cloud
Test Date:2024-11-12

γ Range: 0 - 180DEG
γ Interval: 1.0DEG
Test System:EVERFINE GO-2000B_V1 SYSTEM V2.00.488
Humidity:65.0%
Test Distance:6.360m [K=1.0000]
Remarks: RED

WEC AND CCEC

Test:U:24.00V I:0.1614A P:3.874W PF:1.000 Freq:0Hz Lamp Flux:50.2021x1 lm		
NAME: SF15-24V-5050-60-RGBW-80	TYPE:	WEIGHT:
SPEC.:	DIM.: Length=1m	SERIAL No.:
MFR.:	SUR.:	Shielding Angle:

pcc	80%			70%			50%			30%			10%			0														
pw	50%	30%	10%	50%	30%	10%	50%	30%	10%	50%	30%	10%	50%	30%	10%	0														
pfc	20%			20%			20%			20%			20%			0														
RCR	RCR:Room Cavity Ratio															Wall Exitance Coefficients(WEC)														
0.0																														
1.0	.322	.183	.058	.314	.179	.057	.298	.171	.055	.284	.164	.053	.271	.157	.051															
2.0	.299	.164	.050	.291	.160	.049	.277	.154	.048	.264	.148	.046	.253	.143	.045															
3.0	.274	.146	.044	.268	.143	.043	.255	.138	.042	.244	.134	.041	.233	.129	.040															
4.0	.252	.131	.038	.246	.129	.038	.235	.125	.037	.224	.121	.036	.215	.117	.036															
5.0	.232	.118	.034	.227	.116	.034	.217	.113	.033	.208	.110	.033	.199	.106	.032															
6.0	.215	.108	.031	.210	.106	.031	.201	.103	.030	.193	.100	.029	.185	.097	.029															
7.0	.199	.099	.028	.195	.097	.028	.187	.095	.027	.180	.092	.027	.173	.090	.026															
8.0	.186	.091	.026	.182	.090	.025	.175	.087	.025	.168	.085	.025	.162	.083	.024															
9.0	.174	.084	.024	.171	.083	.023	.164	.081	.023	.158	.079	.023	.152	.077	.022															
10.0	.164	.078	.022	.160	.078	.022	.154	.076	.021	.149	.074	.021	.143	.072	.021															

pcc	80%			70%			50%			30%			10%			0
pw	50%	30%	10%	50%	30%	10%	50%	30%	10%	50%	30%	10%	50%	30%	10%	0
pfc	20%			20%			20%			20%			20%			0
RCR	RCR:Room Cavity Ratio						Ceiling Cavity Exitance Coefficients (CCEC)									
0.0	.222	.222	.222	.190	.190	.190	.130	.130	.130	.074	.074	.074	.024	.024	.024	
1.0	.213	.188	.165	.182	.161	.142	.125	.111	.098	.072	.064	.057	.023	.021	.019	
2.0	.205	.164	.129	.176	.141	.112	.121	.098	.078	.069	.057	.046	.022	.018	.015	
3.0	.198	.147	.106	.169	.127	.092	.116	.088	.064	.067	.051	.038	.022	.017	.012	
4.0	.190	.134	.090	.163	.115	.079	.112	.080	.055	.065	.047	.033	.021	.015	.011	
5.0	.182	.123	.079	.157	.107	.069	.108	.074	.049	.063	.044	.029	.020	.014	.010	
6.0	.175	.115	.072	.151	.100	.062	.104	.070	.044	.060	.041	.026	.019	.013	.009	
7.0	.168	.108	.066	.145	.094	.057	.100	.066	.041	.058	.039	.024	.019	.013	.008	
8.0	.162	.102	.061	.139	.089	.054	.096	.062	.038	.056	.037	.023	.018	.012	.008	
9.0	.156	.097	.058	.134	.085	.051	.093	.059	.036	.054	.035	.021	.018	.012	.007	
10.0	.150	.093	.055	.129	.081	.048	.090	.057	.034	.052	.034	.020	.017	.011	.007	

C Range: 0 - 360DEG
C Interval: 22.5DEG
Test Speed: HIGH
Temperature:25.3℃
Operators:Cloud
Test Date:2024-11-12

γ Range: 0 - 180DEG
γ Interval: 1.0DEG
Test System:EVERFINE GO-2000B_V1 SYSTEM V2.00.488
Humidity:65.0%
Test Distance:6.360m [K=1.0000]
Remarks: RED

UGR(Unified Glare Rating) Table

Test:U:24.00V I:0.1614A P:3.874W PF:1.000 Freq:0Hz Lamp Flux:50.2021x1 lm											
NAME: SF15-24V-5050-60-RGBW-80					TYPE:			WEIGHT:			
SPEC.:					DIM.: Length=1m			SERIAL No.:			
MFR.:					SUR.:			Shielding Angle:			
ceiling/cavity		0.7	0.7	0.5	0.5	0.3	0.7	0.7	0.5	0.5	0.3
walls		0.5	0.3	0.5	0.3	0.3	0.5	0.3	0.5	0.3	0.3
working plane		0.2	0.2	0.2	0.2	0.2	0.2	0.2	0.2	0.2	0.2
Room dimensions		Viewed crosswise					Viewed endwise				
x = 2H y = 2H	2H	23.6	25.1	23.9	25.4	25.7	23.7	25.2	24.1	25.5	25.8
	3H	25.2	26.6	25.6	26.9	27.2	25.4	26.8	25.8	27.1	27.4
	4H	25.9	27.2	26.3	27.5	27.9	26.2	27.5	26.6	27.8	28.2
	6H	26.5	27.7	26.9	28.0	28.4	26.9	28.1	27.2	28.4	28.8
	8H	26.6	27.8	27.1	28.2	28.6	27.1	28.3	27.5	28.7	29.0
	12H	26.8	27.9	27.2	28.3	28.7	27.3	28.5	27.7	28.8	29.2
4H	2H	24.3	25.6	24.6	25.9	26.2	24.4	25.7	24.7	26.0	26.3
	3H	26.1	27.2	26.5	27.6	28.0	26.3	27.4	26.7	27.8	28.2
	4H	26.9	27.9	27.3	28.3	28.8	27.2	28.2	27.6	28.6	29.0
	6H	27.6	28.5	28.0	28.9	29.4	28.0	28.9	28.4	29.3	29.8
	8H	27.8	28.7	28.3	29.1	29.6	28.3	29.2	28.8	29.6	30.1
	12H	28.0	28.8	28.5	29.3	29.8	28.6	29.4	29.1	29.8	30.3
8H	4H	27.2	28.1	27.7	28.5	29.0	27.5	28.3	27.9	28.8	29.3
	6H	28.1	28.8	28.6	29.3	29.8	28.5	29.2	29.0	29.7	30.2
	8H	28.5	29.1	29.0	29.6	30.1	28.9	29.5	29.4	30.0	30.6
	12H	28.7	29.3	29.3	29.8	30.4	29.3	29.9	29.8	30.4	30.9
12H	4H	27.3	28.1	27.8	28.5	29.0	27.5	28.3	28.0	28.7	29.2
	6H	28.2	28.8	28.7	29.3	29.9	28.5	29.2	29.1	29.7	30.2
	8H	28.6	29.2	29.1	29.7	30.2	29.0	29.6	29.6	30.1	30.7
Variations with the observer position at spacings(CIE Pub.117):											
S = 1.0H		+ 0.1 / - 0.2					+ 0.1 / - 0.2				
1.5H		+ 0.2 / - 0.3					+ 0.2 / - 0.3				
2.0H		+ 0.1 / - 0.3					+ 0.1 / - 0.3				

CIE Pub.117, 50.20 lm Total Lamp Luminous Flux Correct (8log(F/F0) = -10.4)
Area: 0.012 m2

C Range: 0 - 360DEG
C Interval: 22.5DEG
Test Speed: HIGH
Temperature:25.3℃
Operators:Cloud
Test Date:2024-11-12

γ Range: 0 - 180DEG
γ Interval: 1.0DEG
Test System:EVERFINE GO-2000B_V1 SYSTEM V2.00.488
Humidity:65.0%
Test Distance:6.360m [K=1.0000]
Remarks: RED

UTILIZATION FACTORS TABLE

Test:U:24.00V I:0.1614A P:3.874W PF:1.000 Freq:0Hz Lamp Flux:50.2021x1 lm		
NAME: SF15-24V-5050-60-RGBW-80	TYPE:	WEIGHT:
SPEC.:	DIM.: Length=1m	SERIAL No.:
MFR.:	SUR.:	Shielding Angle:

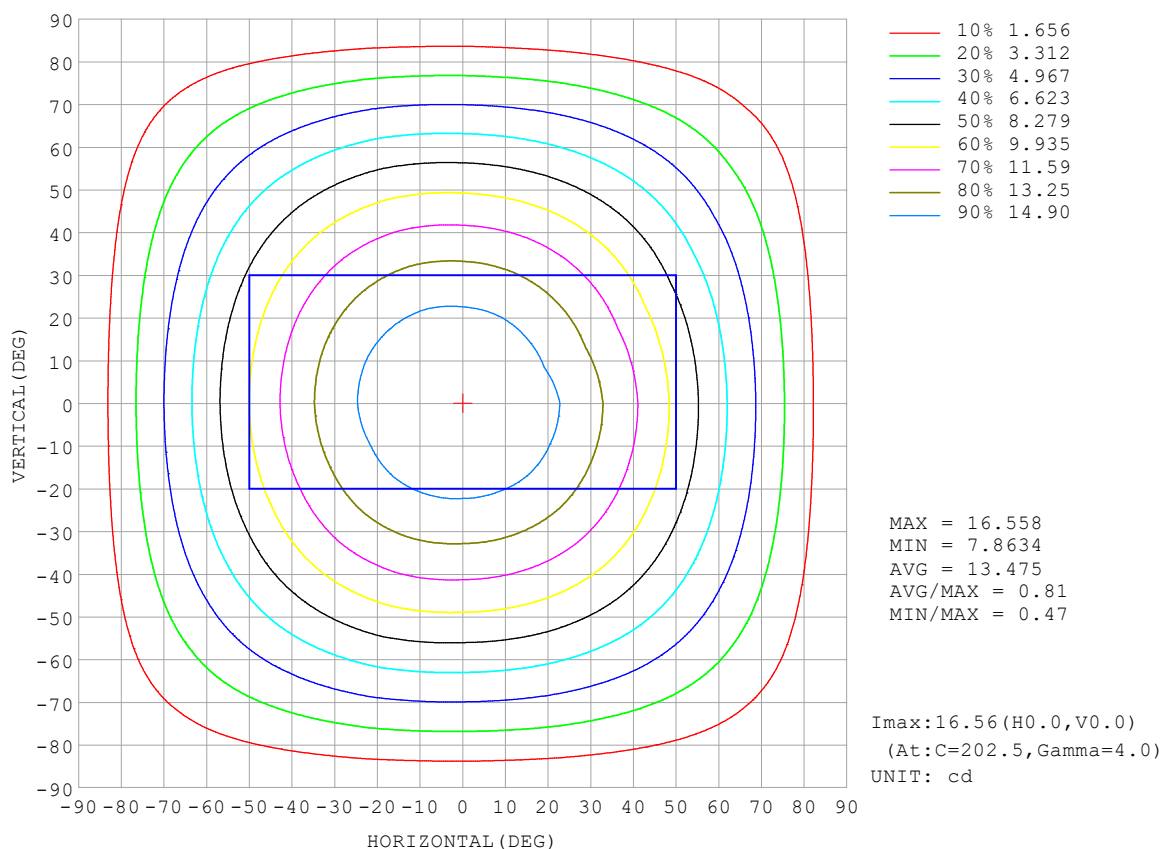
REFLECTANCE										
Ceiling	0.8	0.8	0.8	0.7	0.7	0.7	0.5	0.5	0.5	0
Walls	0.7	0.5	0.3	0.7	0.5	0.3	0.7	0.5	0.3	0
Working plane	0.2	0.2	0.2	0.2	0.2	0.2	0.2	0.2	0.2	0
ROOM INDEX	UTILIZATION FACTORS (PERCENT) $k(RI) \times RCR = 5$									
$k = 0.60$	56	44	37	55	44	37	53	43	37	30
0.80	66	54	46	64	53	46	62	52	45	38
1.00	74	62	55	72	62	55	70	63	54	46
1.25	81	70	63	79	69	62	76	67	61	53
1.50	86	76	68	84	74	68	80	72	66	58
2.00	93	84	77	91	82	76	87	80	74	65
2.50	97	89	82	94	87	81	90	84	79	69
3.00	100	93	87	98	91	86	93	88	83	73
4.00	104	98	93	102	96	92	97	92	88	78
5.00	107	102	97	104	99	95	99	95	92	81
ROOM INDEX	UF (total)									Direct
According to DIN EN 13032-2 2004			Suspended					SHRNOM = 1.25		

C Range: 0 - 360DEG
 C Interval: 22.5DEG
 Test Speed: HIGH
 Temperature: 25.3°C
 Operators: Cloud
 Test Date: 2024-11-12

γ Range: 0 - 180DEG
 γ Interval: 1.0DEG
 Test System: EVERFINE GO-2000B_V1 SYSTEM V2.00.488
 Humidity: 65.0%
 Test Distance: 6.360m [K=1.0000]
 Remarks: RED

ISOCANDELA DIAGRAM

Test:U:24.00V I:0.1614A P:3.874W PF:1.000 Freq:0Hz Lamp Flux:50.2021x1 lm		
NAME: SF15-24V-5050-60-RGBW-80	TYPE:	WEIGHT:
SPEC.:	DIM.: Length=1m	SERIAL No.:
MFR.:	SUR.:	Shielding Angle:

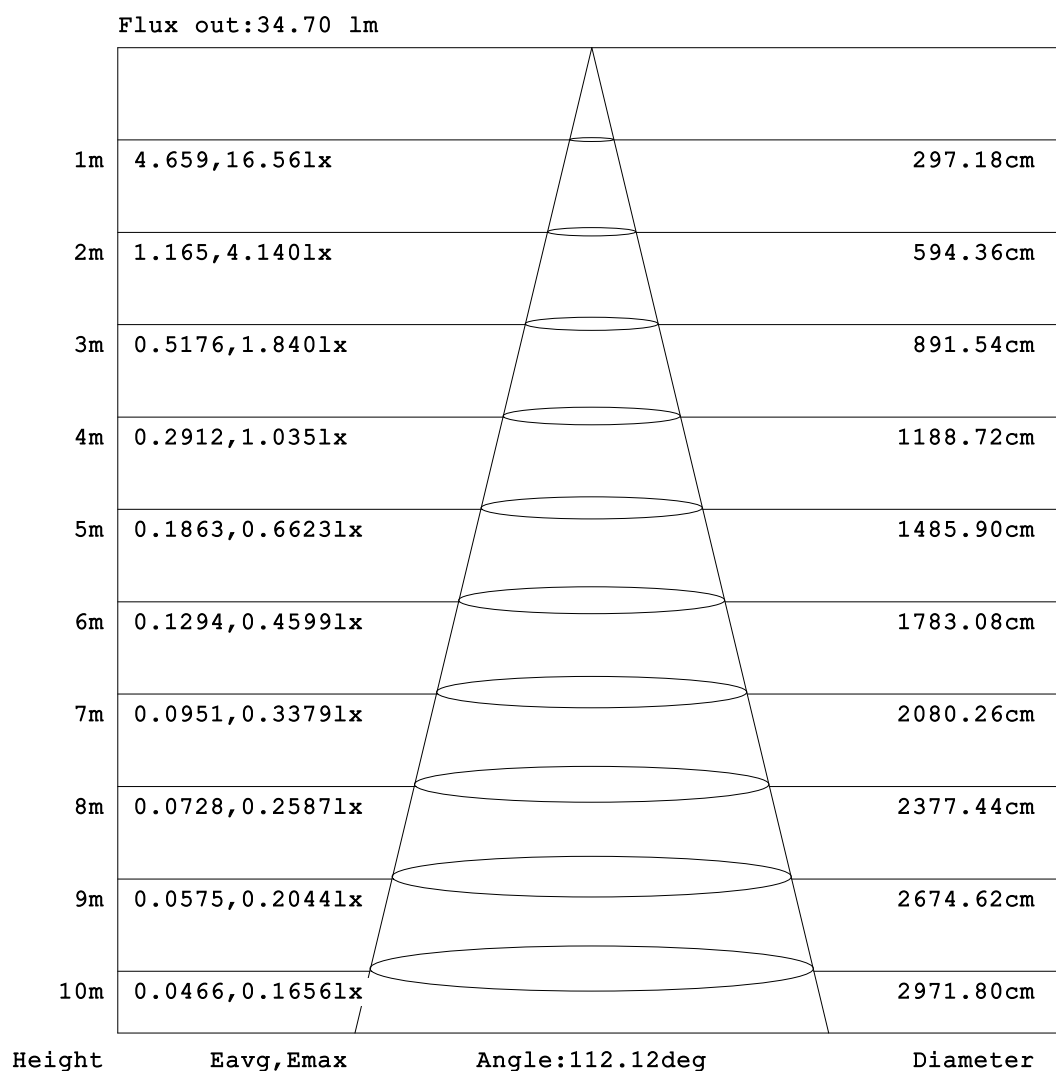


C Range: 0 - 360DEG
C Interval: 22.5DEG
Test Speed: HIGH
Temperature:25.3℃
Operators:Cloud
Test Date:2024-11-12

γ Range: 0 - 180DEG
γ Interval: 1.0DEG
Test System:EVERFINE GO-2000B_V1 SYSTEM V2.00.488
Humidity:65.0%
Test Distance:6.360m [K=1.0000]
Remarks: RED

AAI Figure

Test:U:24.00V I:0.1614A P:3.874W PF:1.000 Freq:0Hz Lamp Flux:50.2021lx 1m		
NAME: SF15-24V-5050-60-RGBW-80	TYPE:	WEIGHT:
SPEC.:	DIM.: Length=1m	SERIAL No.:
MFR.:	SUR.:	Shielding Angle:



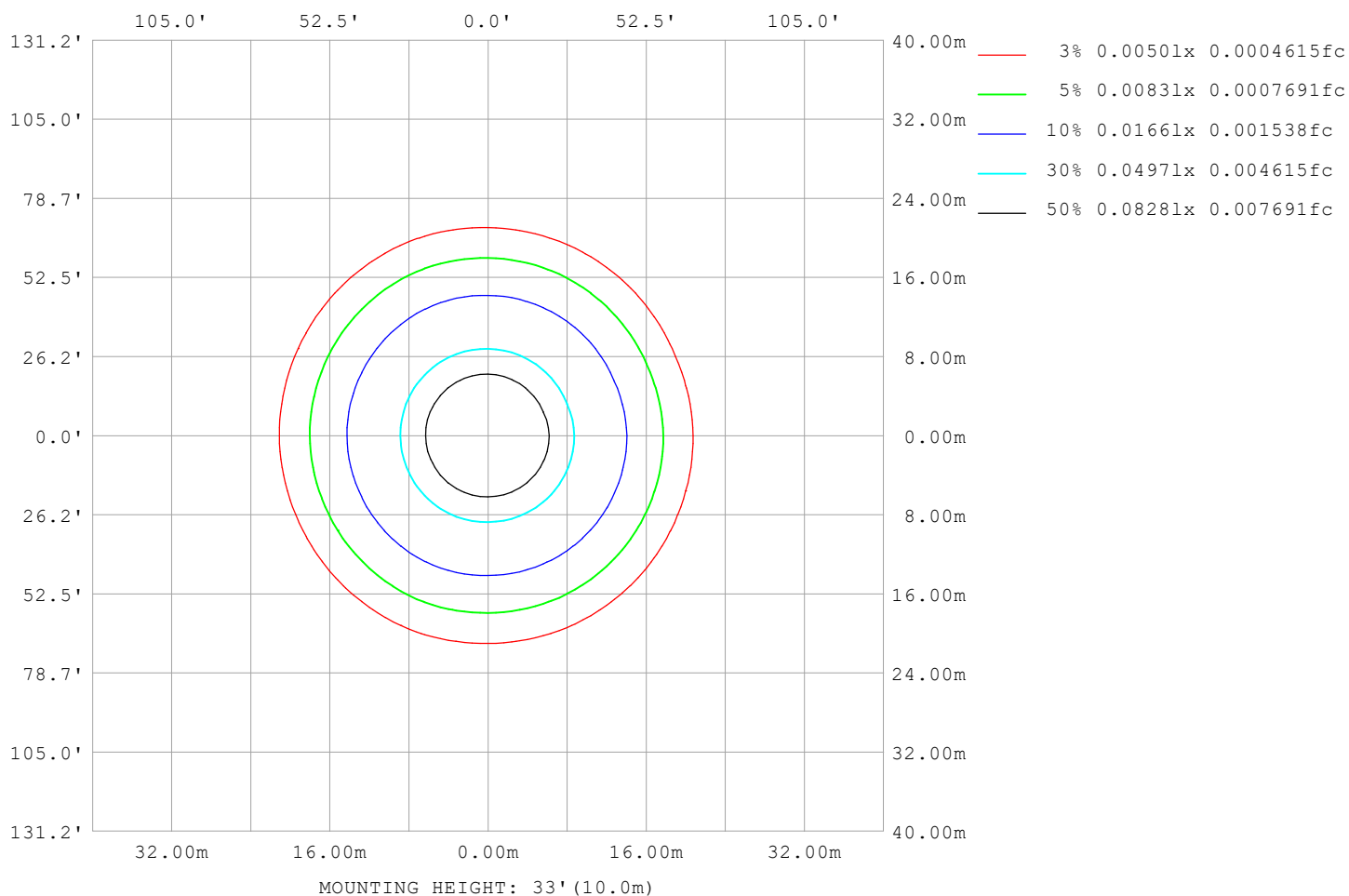
Note: The Curves indicate the illuminated area and the average illumination when the luminaire is at different distance.

C Range: 0 - 360DEG
C Interval: 22.5DEG
Test Speed: HIGH
Temperature: 25.3 °C
Operators: Cloud
Test Date: 2024-11-12

γ Range: 0 - 180DEG
γ Interval: 1.0DEG
Test System: EVERFINE GO-2000B_V1 SYSTEM V2.00.488
Humidity: 65.0%
Test Distance: 6.360m [K=1.0000]
Remarks: RED

ISOLUX DIAGRAM

Test:U:24.00V I:0.1614A P:3.874W PF:1.000 Freq:0Hz Lamp Flux:50.2021x1 lm		
NAME: SF15-24V-5050-60-RGBW-80	TYPE:	WEIGHT:
SPEC.:	DIM.: Length=1m	SERIAL No.:
MFR.:	SUR.:	Shielding Angle:



C Range: 0 - 360DEG
C Interval: 22.5DEG
Test Speed: HIGH
Temperature: 25.3°C
Operators: Cloud
Test Date: 2024-11-12

γ Range: 0 - 180DEG
γ Interval: 1.0DEG
Test System: EVERFINE GO-2000B_V1 SYSTEM V2.00.488
Humidity: 65.0%
Test Distance: 6.360m [K=1.0000]
Remarks: RED

LED Avg.L Report

Test:U:24.00V I:0.1614A P:3.874W PF:1.000 Freq:0Hz Lamp Flux:50.2021x1 lm		
NAME: SF15-24V-5050-60-RGBW-80	TYPE:	WEIGHT:
SPEC.:	DIM.: Length=1m	SERIAL No.:
MFR.:	SUR.:	Shielding Angle:

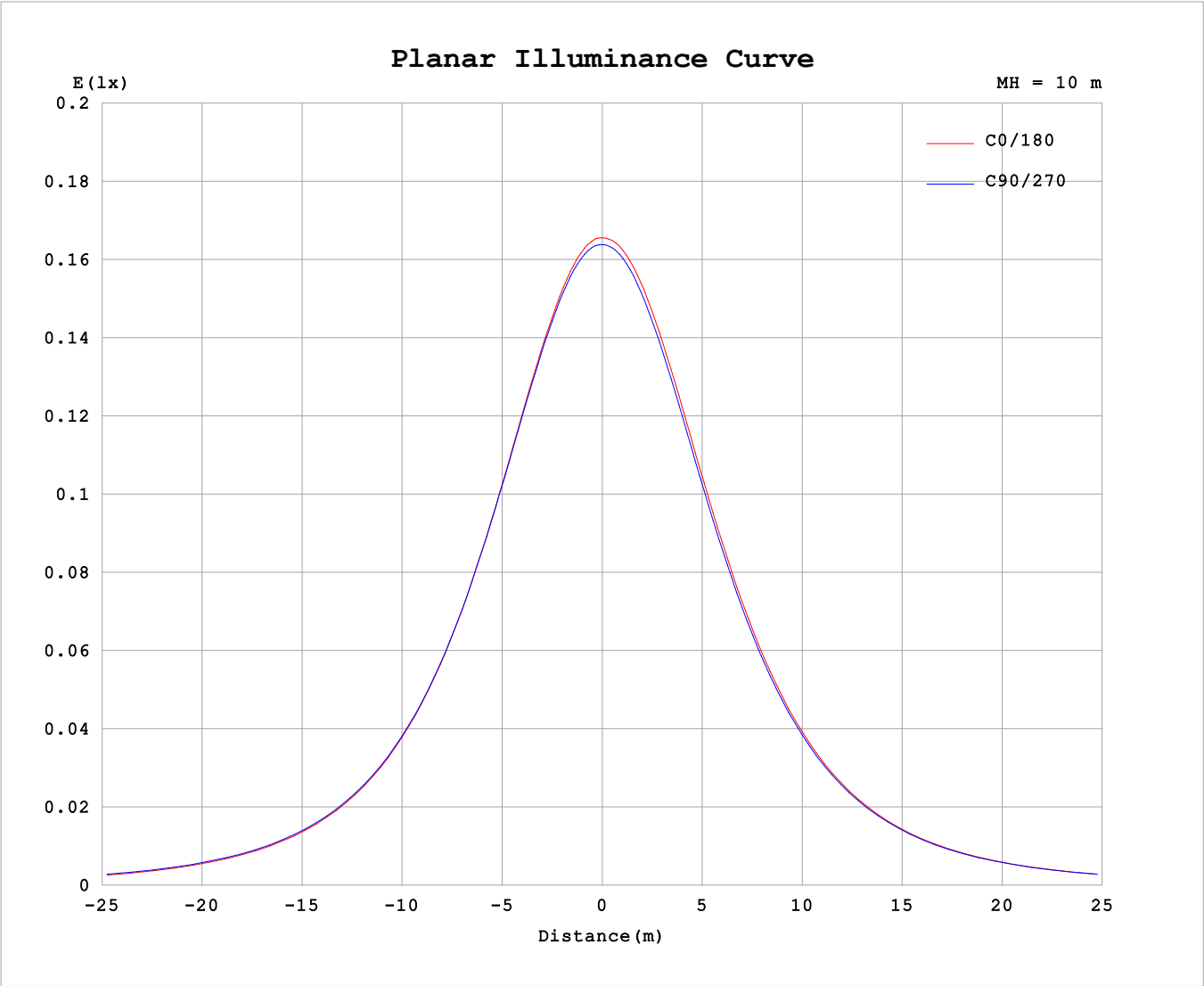
AvgL	cd/m2
L_0~180 (65) av	1184
L_0~180 (75) av	1134
L_0~180 (85) av	1057
L_90~270 (65) av	1217
L_90~270 (75) av	1209
L_90~270 (85) av	1297
L_45 (65) av	1205
L_45 (75) av	1171
L_45 (85) av	1127

Standard: GB/T 29293-2012

C Range: 0 - 360DEG
C Interval: 22.5DEG
Test Speed: HIGH
Temperature:25.3℃
Operators:Cloud
Test Date:2024-11-12

γ Range: 0 - 180DEG
γ Interval: 1.0DEG
Test System:EVERFINE GO-2000B_V1 SYSTEM V2.00.488
Humidity:65.0%
Test Distance:6.360m [K=1.0000]
Remarks: RED

Planar Illuminance Curve



C Range: 0 - 360DEG	γ Range: 0 - 180DEG
C Interval: 22.5DEG	γ Interval: 1.0DEG
Test Speed: HIGH	Test System:EVERFINE GO-2000B_V1 SYSTEM V2.00.488
Temperature:25.3℃	Humidity:65.0%
Operators:Cloud	Test Distance:6.360m [K=1.0000]
Test Date:2024-11-12	Remarks: RED

LUMINOUS DISTRIBUTION INTENSITY DATA

Test:U:24.00V I:0.1614A P:3.874W PF:1.000 Freq:0Hz Lamp Flux:50.2021x1 lm																	
NAME: SF15-24V-5050-60-RGBW-80									TYPE:						WEIGHT:		
SPEC.:									DIM.: Length=1m						SERIAL No.:		
MFR.:									SUR.:						Shielding Angle:		

Table--1

UNIT: cd

C (DEG) γ (DEG)		0	22.5	45	67.5	90	112.5	135	157.5	180	202.5	225	247.5	270	292.5	315	337.5			
0	0	16.4	16.4	16.4	16.4	16.4	16.4	16.4	16.4	16.4	16.4	16.4	16.4	16.4	16.4	16.4	16.4			
5	5	16.3	16.3	16.4	16.3	16.4	16.4	16.4	16.4	16.4	16.4	16.4	16.4	16.4	16.4	16.3	16.3			
10	10	16.1	16.1	16.1	16.1	16.1	16.1	16.2	16.2	16.2	16.2	16.2	16.2	16.1	16.1	16.1	16.1			
15	15	15.7	15.7	15.7	15.7	15.8	15.8	15.9	15.9	15.9	15.9	15.9	15.8	15.8	15.7	15.7	15.6			
20	20	15.1	15.2	15.2	15.2	15.2	15.3	15.4	15.4	15.4	15.4	15.4	15.3	15.3	15.2	15.1	15.1			
25	25	14.5	14.5	14.5	14.5	14.6	14.7	14.8	14.8	14.7	14.8	14.8	14.7	14.6	14.5	14.5	14.4			
30	30	13.6	13.7	13.7	13.7	13.8	13.9	14.0	14.0	14.0	14.0	14.0	14.0	13.8	13.8	13.7	13.6			
35	35	12.7	12.8	12.8	12.8	12.9	13.0	13.1	13.1	13.1	13.1	13.1	13.1	13.0	12.9	12.7	12.6			
40	40	11.7	11.8	11.8	11.9	11.9	12.1	12.1	12.1	12.1	12.1	12.2	12.1	12.0	11.9	11.7	11.6			
45	45	10.6	10.7	10.8	10.8	10.8	11.0	11.1	11.1	11.0	11.1	11.1	11.1	10.9	10.8	10.7	10.5			
50	50	9.48	9.53	9.63	9.68	9.72	9.90	9.92	9.89	9.86	9.91	9.96	9.96	9.78	9.66	9.52	9.37			
55	55	8.28	8.34	8.44	8.51	8.55	8.73	8.72	8.68	8.66	8.71	8.76	8.78	8.61	8.49	8.34	8.18			
60	60	7.05	7.12	7.24	7.32	7.35	7.53	7.49	7.44	7.43	7.47	7.53	7.57	7.41	7.28	7.13	6.96			
65	65	5.83	5.89	6.03	6.12	6.16	6.29	6.24	6.18	6.18	6.22	6.28	6.32	6.19	6.08	5.91	5.74			
70	70	4.60	4.66	4.81	4.91	4.96	5.06	4.98	4.91	4.92	4.96	5.01	5.07	4.96	4.85	4.68	4.52			
75	75	3.38	3.46	3.60	3.72	3.77	3.83	3.73	3.66	3.66	3.69	3.75	3.81	3.74	3.64	3.46	3.31			
80	80	2.17	2.25	2.38	2.52	2.57	2.59	2.49	2.40	2.42	2.44	2.49	2.57	2.53	2.42	2.24	2.10			
85	85	1.02	1.08	1.19	1.31	1.38	1.36	1.26	1.18	1.19	1.20	1.23	1.31	1.33	1.19	1.04	0.97			
90	90	0.40	0.40	0.43	0.39	0.38	0.40	0.44	0.42	0.44	0.45	0.38	0.34	0.26	0.33	0.35	0.39			
95	95	0.28	0.29	0.33	0.36	0.38	0.37	0.35	0.30	0.26	0.28	0.26	0.27	0.28	0.26	0.26	0.27			
100	100	0.27	0.29	0.33	0.36	0.38	0.37	0.34	0.30	0.24	0.26	0.26	0.27	0.29	0.25	0.26	0.26			
105	105	0.27	0.29	0.32	0.37	0.38	0.38	0.34	0.31	0.24	0.25	0.27	0.27	0.30	0.23	0.26	0.25			
110	110	0.27	0.30	0.32	0.38	0.38	0.38	0.34	0.32	0.25	0.25	0.28	0.27	0.30	0.24	0.27	0.25			
115	115	0.27	0.31	0.32	0.38	0.38	0.38	0.34	0.32	0.26	0.25	0.29	0.28	0.31	0.26	0.28	0.26			
120	120	0.29	0.33	0.33	0.39	0.38	0.39	0.34	0.33	0.27	0.26	0.30	0.29	0.32	0.29	0.31	0.27			
125	125	0.31	0.33	0.33	0.38	0.38	0.39	0.34	0.33	0.28	0.28	0.31	0.30	0.32	0.31	0.32	0.28			
130	130	0.32	0.34	0.34	0.39	0.38	0.39	0.35	0.34	0.30	0.29	0.33	0.31	0.34	0.32	0.34	0.30			
135	135	0.34	0.35	0.35	0.39	0.39	0.40	0.35	0.35	0.31	0.31	0.34	0.33	0.36	0.33	0.35	0.31			
140	140	0.34	0.35	0.35	0.40	0.39	0.40	0.36	0.36	0.33	0.32	0.36	0.34	0.37	0.34	0.36	0.33			
145	145	0.36	0.36	0.36	0.40	0.39	0.41	0.37	0.37	0.35	0.34	0.37	0.36	0.38	0.35	0.37	0.34			
150	150	0.37	0.37	0.37	0.40	0.40	0.41	0.38	0.38	0.36	0.36	0.39	0.37	0.39	0.37	0.39	0.35			
155	155	0.38	0.38	0.38	0.42	0.40	0.42	0.39	0.40	0.38	0.37	0.40	0.39	0.41	0.39	0.40	0.36			
160	160	0.39	0.39	0.39	0.42	0.41	0.43	0.40	0.41	0.39	0.38	0.42	0.40	0.42	0.40	0.41	0.38			
165	165	0.40	0.40	0.40	0.43	0.41	0.43	0.40	0.42	0.40	0.40	0.43	0.41	0.43	0.41	0.42	0.39			
170	170	0.41	0.42	0.41	0.43	0.42	0.43	0.41	0.43	0.41	0.41	0.43	0.42	0.43	0.41	0.43	0.40			
175	175	0.41	0.43	0.42	0.43	0.42	0.43	0.41	0.43	0.41	0.42	0.43	0.43	0.43	0.42	0.43	0.41			
180	180	0.41	0.43	0.43	0.43	0.43	0.43	0.42	0.43	0.41	0.42	0.43	0.43	0.43	0.43	0.43	0.42			

C Range: 0 - 360DEG

C Interval: 22.5DEG

Test Speed: HIGH

Temperature:25.3℃

Operators:Cloud

Test Date:2024-11-12

γ Range: 0 - 180DEG

γ Interval: 1.0DEG

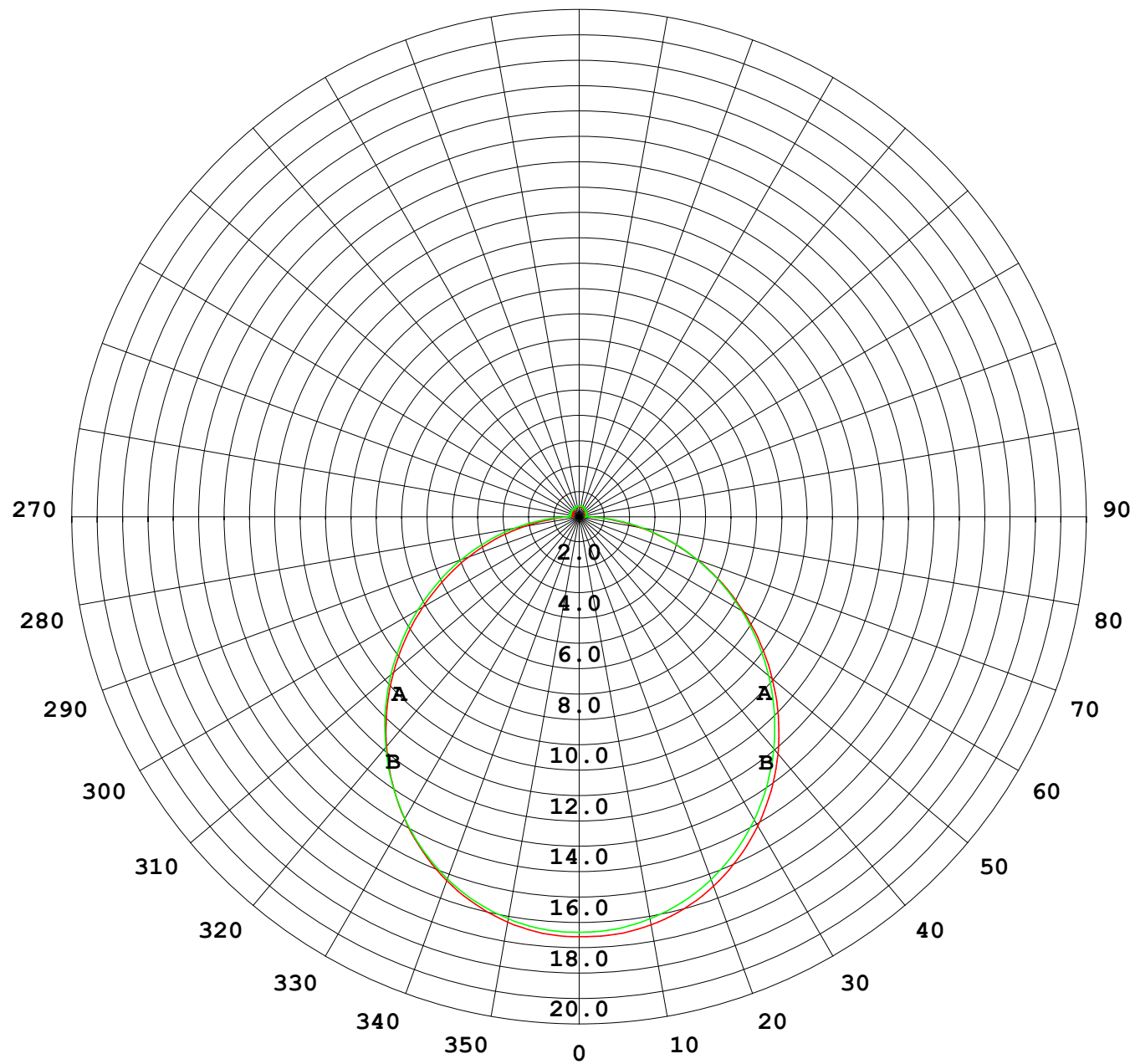
Test System:EVERFINE GO-2000B_V1 SYSTEM V2.00.488

Humidity:65.0%

Test Distance:6.360m [K=1.0000]

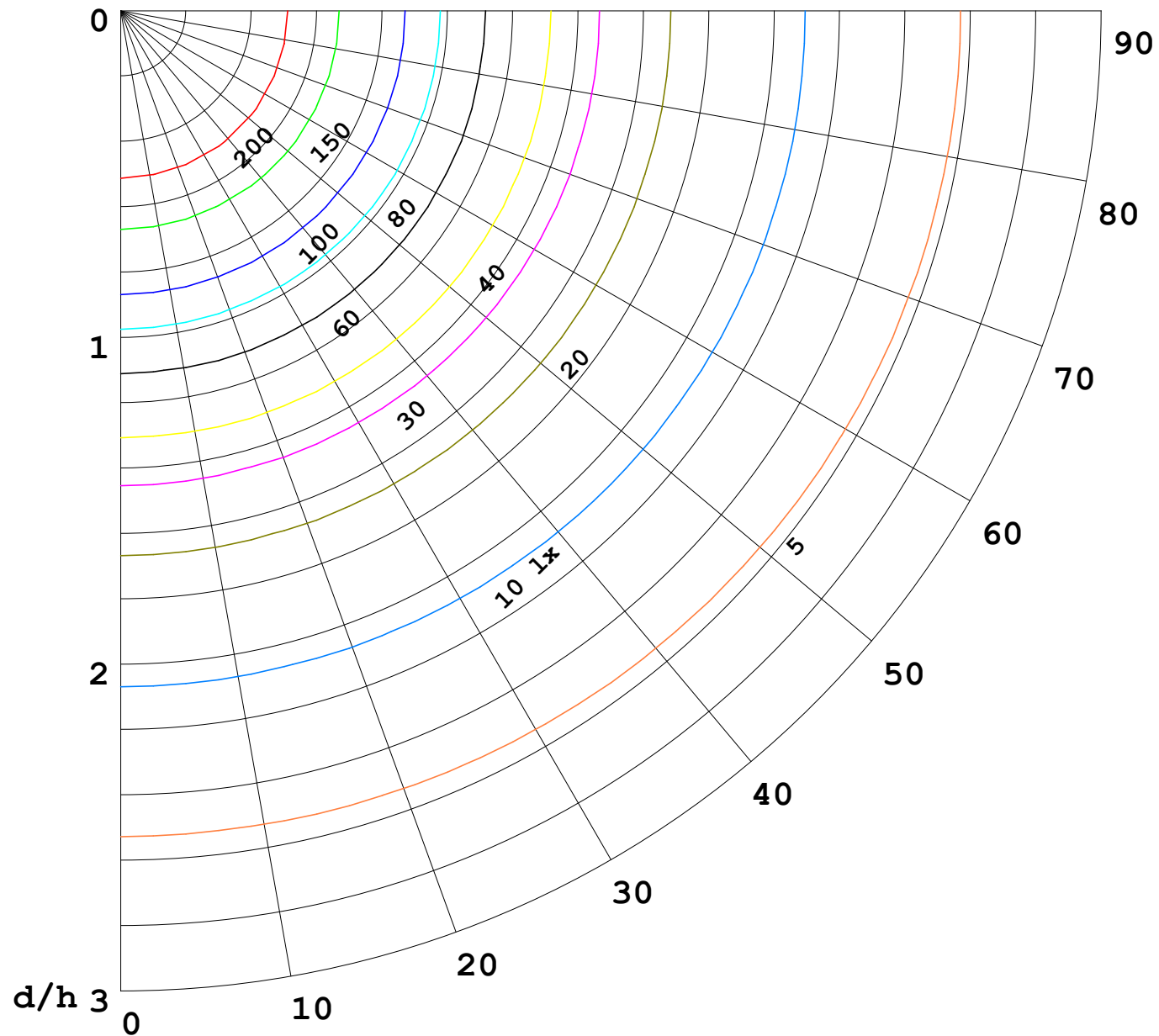
Remarks: RED

I (cd)



1000 lm

$\kappa = 1$



F = 1000 lm
 K = 0.7
 Hcc = 0.8 m
 Hfc = 0.0 m
 Eave = 100 lx

	Pcc	Pw	Pfc
—————	70	50	30
—————	50	30	20

