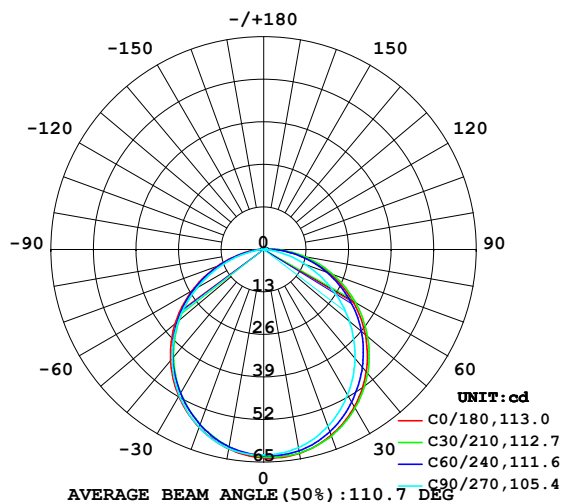


LUMINAIRE PHOTOMETRIC TEST REPORT

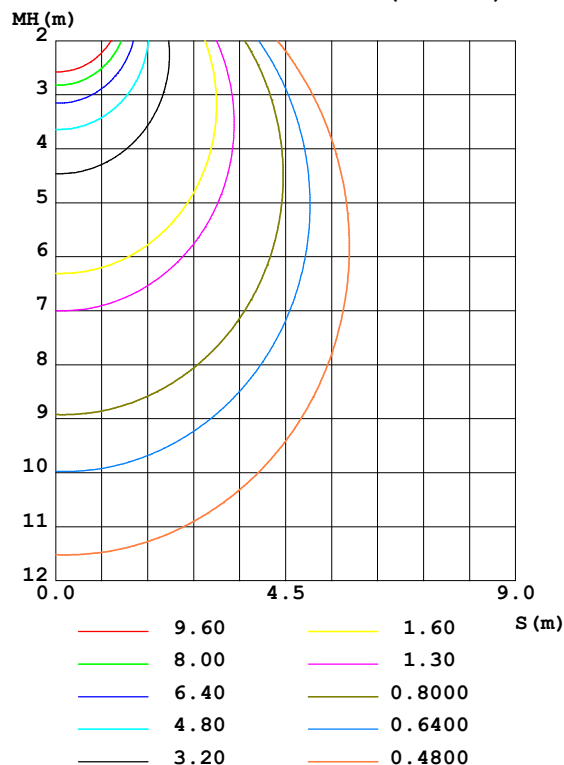
Test:U:48.00V I:0.2912A P:13.98W PF:1.000 Freq:50.00Hz Lamp Flux:182.617x1 lm		
NAME: SF15-48V-5050-60-RGB	TYPE: 硅胶	WEIGHT:
SPEC.:	DIM.: 21mm*11.5mm	SERIAL No.:2021122712
MFR.: OLYMPIA	SUR.:1*0.0115	Shielding Angle:

DATA OF LAMP		PHOTOMETRIC DATA Eff: 13.06 lm/W			
MODEL	5050	I _{max} (cd)	63.79	S/MH (C0/180)	1.22
NOMINAL POWER (W)	10	LOR (%)	100.0	S/MH (C90/270)	1.23
RATED VOLTAGE (V)	48	TOTAL FLUX (lm)	182.62	η UP, DN (C0-180)	1.0, 49.3
NOMINAL FLUX (lm)	182.617	CIE CLASS	DIRECT	η UP, DN (C180-360)	0.7, 49.1
LAMPS INSIDE	1	η up (%)	1.6	CIBSE SHR NOM	1.25
TEST VOLTAGE (V)	48	η down (%)	98.4	CIBSE SHR MAX	1.35

LUMINOUS INTENSITY DISTRIBUTION DIAGRAM



C0 PLANE ISOLUX DIAGRAM (UNIT:lx)



C Range: 0 - 360DEG
C Interval: 30.0DEG
Test Speed: HIGH
Temperature: 25.3DEG
Operators: LPC
Test Date: 2021-12-27

γ Range: 0 - 120DEG
γ Interval: 1.0DEG
Test System: EVERFINE GO-2000B_V1 SYSTEM V2.0.362
Humidity: 65.0%
Test Distance: 9.200m [K=1.0000]
Remarks:

ZONAL FLUX DIAGRAM

ZONAL FLUX DIAGRAM:

γ	C0	C45	C90	C135	C180	C225	C270	C315	γ	Φ zone	Φ total	%lum, lamp
10	63.23	62.80	61.53	60.35	61.86	61.22	61.79	62.75	0- 10	5.963	5.963	3.27,3.27
20	60.39	59.95	57.50	55.76	57.84	56.93	57.78	60.11	10- 20	17.03	22.99	12.6,12.6
30	55.50	54.85	51.33	49.37	51.89	50.75	51.62	55.44	20- 30	25.64	48.62	26.6,26.6
40	48.77	48.19	43.42	41.53	44.29	43.11	43.52	49.26	30- 40	30.74	79.36	43.5,43.5
50	40.58	40.21	34.22	32.53	35.37	34.15	34.04	41.62	40- 50	31.78	111.1	60.9,60.9
60	31.34	31.24	24.07	22.72	25.32	24.18	23.62	32.69	50- 60	28.66	139.8	76.6,76.6
70	21.46	21.59	13.74	12.79	15.06	13.94	13.20	22.98	60- 70	21.94	161.8	88.6,88.6
80	11.47	11.82	4.455	4.381	6.104	4.914	3.570	12.99	70- 80	13.04	174.8	95.7,95.7
90	3.619	3.408	0.5981	1.143	1.239	0.8599	0.3147	3.976	80- 90	4.831	179.6	98.4,98.4
100	0.9910	1.033	0.6938	1.119	0.6373	0.7263	0.3618	0.8344	90-100	1.369	181.0	99.1,99.1
110	0.9078	1.002	0.7962	1.104	0.3476	0.7531	0.4902	0.7288	100-110	0.8476	181.8	99.6,99.6
120	0.1818	0.6534	0.2398	1.128	0.0579	0.5435	0.5830	0.2006	110-120	0.7515	182.6	100,100
130	0	0	0	0	0	0	0	0	120-130	0.0287	182.6	100,100
140	0	0	0	0	0	0	0	0	130-140	0	182.6	100,100
150	0	0	0	0	0	0	0	0	140-150	0	182.6	100,100
160	0	0	0	0	0	0	0	0	150-160	0	182.6	100,100
170	0	0	0	0	0	0	0	0	160-170	0	182.6	100,100
180	0	0	0	0	0	0	0	0	170-180	0	182.6	100,100
DEG	LUMINOUS INTENSITY:cd									UNIT:lm		

Conical surface Flux(90deg): 95.391 lm

%lum = 52.2%

%lamp = 52.2%

Conical surface Flux(120deg): 139.81 lm

%lum = 76.6%

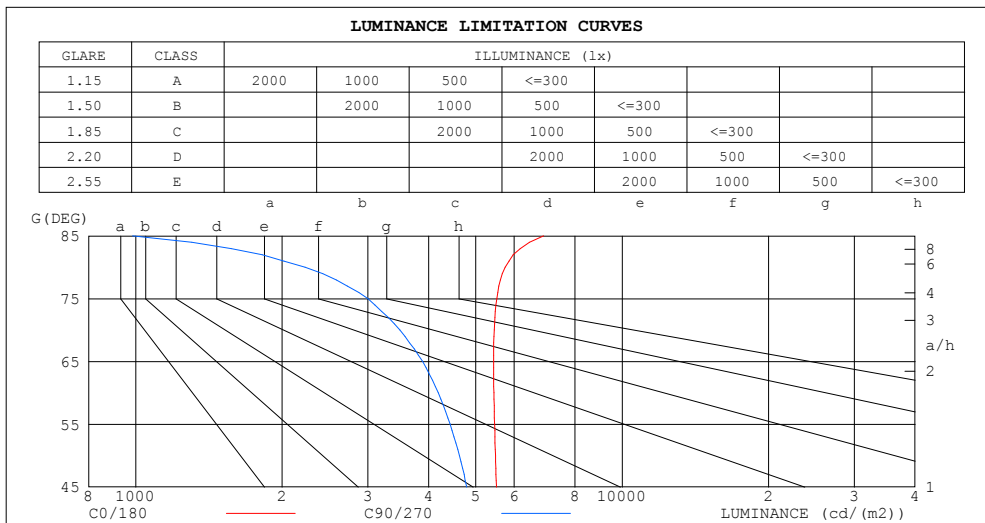
%lamp = 76.6%

C Range: 0 - 360DEG
 C Interval: 30.0DEG
 Test Speed: HIGH
 Temperature:25.3DEG
 Operators:LPC
 Test Date:2021-12-27

γ Range: 0 - 120DEG
 γ Interval: 1.0DEG
 Test System:EVERFINE GO-2000B_V1 SYSTEM V2.0.362
 Humidity:65.0%
 Test Distance:9.200m [K=1.0000]
 Remarks:

LUMINANCE LIMITATION CURVES

Test:U:48.00V I:0.2912A P:13.98W PF:1.000 Freq:50.00Hz Lamp Flux:182.617x1 lm		
NAME: SF15-48V-5050-60-RGB	TYPE: 硅胶	WEIGHT:
SPEC.:	DIM.: 21mm*11.5mm	SERIAL No.:2021122712
MFR.: OLYMPIA	SUR.:1*0.0115	Shielding Angle:



LUMINANCE cd/(m2)		
G (DEG)	C0/180	C90/270
85	6894	985
80	5745	2231
75	5522	3001
70	5456	3492
65	5439	3886
60	5450	4186
55	5467	4426
50	5490	4629
45	5515	4791

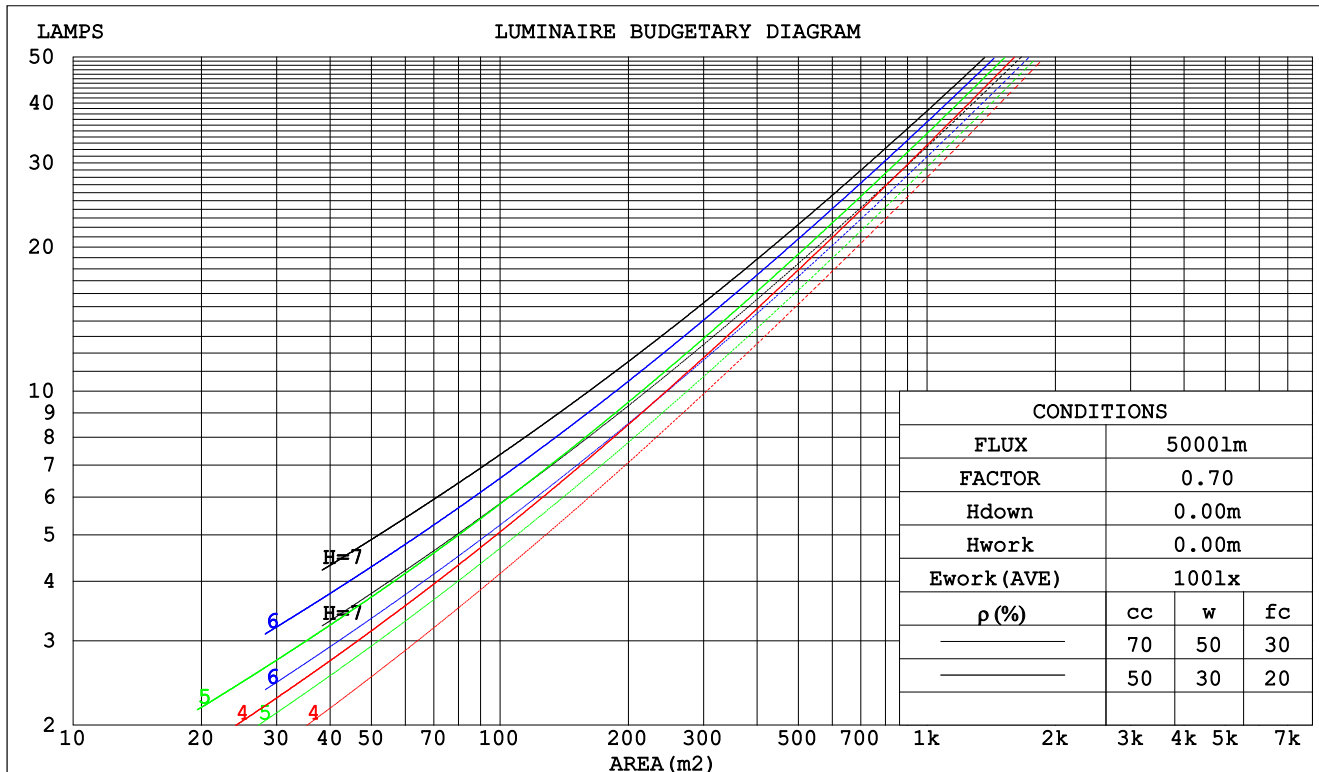
C Range: 0 - 360DEG
C Interval: 30.0DEG
Test Speed: HIGH
Temperature:25.3DEG
Operators:LPC
Test Date:2021-12-27

γ Range: 0 - 120DEG
 γ Interval: 1.0DEG
Test System:EVERFINE GO-2000B_V1 SYSTEM V2.0.362
Humidity:65.0%
Test Distance:9.200m [K=1.0000]
Remarks:

CU AND LUMINAIRE BUDGETARY ESTIMATE DIAGRAM

Test:U:48.00V I:0.2912A P:13.98W PF:1.000 Freq:50.00Hz Lamp Flux:182.617x1 lm		
NAME: SF15-48V-5050-60-RGB	TYPE: 硅胶	WEIGHT:
SPEC.:	DIM.: 21mm*11.5mm	SERIAL No.:2021122712
MFR.: OLYMPIA	SUR.:1*0.0115	Shielding Angle:

pcc	80%			70%			50%			30%			10%			0
pw	50%	30%	10%	50%	30%	10%	50%	30%	10%	50%	30%	10%	50%	30%	10%	0
pfc	20%			20%			20%			20%			20%			0
RCR	Coefficients of Utilization(CU)															
	RCR:Room Cavity Ratio															
0.0	1.19	1.19	1.19	1.16	1.16	1.16	1.10	1.10	1.10	1.05	1.05	1.05	1.01	1.01	1.01	.98
1.0	1.03	.99	.95	1.01	.97	.93	.96	.93	.90	.92	.89	.87	.88	.86	.84	.82
2.0	.90	.83	.77	.88	.81	.76	.84	.78	.74	.80	.76	.72	.77	.73	.70	.68
3.0	.79	.70	.64	.77	.69	.63	.74	.67	.62	.71	.65	.60	.68	.63	.59	.57
4.0	.70	.61	.54	.68	.60	.53	.65	.58	.53	.63	.57	.52	.61	.55	.51	.49
5.0	.62	.53	.46	.61	.52	.46	.59	.51	.45	.56	.50	.45	.54	.49	.44	.42
6.0	.56	.47	.40	.55	.46	.40	.53	.45	.40	.51	.44	.39	.49	.43	.39	.37
7.0	.51	.42	.36	.50	.41	.36	.48	.41	.35	.47	.40	.35	.45	.39	.34	.32
8.0	.46	.38	.32	.45	.37	.32	.44	.37	.31	.43	.36	.31	.41	.35	.31	.29
9.0	.42	.34	.29	.42	.34	.29	.41	.33	.28	.39	.33	.28	.38	.32	.28	.26
10.0	.39	.31	.26	.39	.31	.26	.37	.30	.26	.36	.30	.25	.35	.30	.25	.23



C Range: 0 - 360DEG
 C Interval: 30.0DEG
 Test Speed: HIGH
 Temperature:25.3DEG
 Operators:LPC
 Test Date:2021-12-27

γ Range: 0 - 120DEG
 γ Interval: 1.0DEG
 Test System:EVERFINE GO-2000B_V1 SYSTEM V2.0.362
 Humidity:65.0%
 Test Distance:9.200m [K=1.0000]
 Remarks:

WEC AND CCEC

Test:U:48.00V I:0.2912A P:13.98W PF:1.000 Freq:50.00Hz Lamp Flux:182.617x1 lm					
NAME: SF15-48V-5050-60-RGB			TYPE:硅胶		WEIGHT:
SPEC.:			DIM.: 21mm*11.5mm		SERIAL No.:2021122712
MFR.: OLYMPIA			SUR.:1*0.0115		Shielding Angle:

pcc	80%			70%			50%			30%			10%			0
pw	50%	30%	10%	50%	30%	10%	50%	30%	10%	50%	30%	10%	50%	30%	10%	0
pfc	20%			20%			20%			20%			20%			0
RCR	RCR:Room Cavity Ratio						Wall Exitance Coefficients(WEC)									
0.0																
1.0	.318	.181	.057	.310	.177	.056	.296	.170	.054	.283	.163	.052	.271	.157	.051	
2.0	.296	.162	.050	.289	.159	.049	.276	.154	.048	.265	.148	.046	.254	.144	.045	
3.0	.272	.145	.043	.266	.143	.043	.255	.138	.042	.245	.134	.041	.235	.130	.040	
4.0	.250	.130	.038	.245	.128	.038	.235	.125	.037	.226	.121	.037	.217	.118	.036	
5.0	.231	.118	.034	.226	.116	.034	.217	.113	.033	.209	.110	.033	.202	.108	.032	
6.0	.214	.107	.031	.210	.106	.031	.202	.103	.030	.195	.101	.030	.188	.099	.029	
7.0	.199	.098	.028	.195	.097	.028	.188	.095	.027	.182	.093	.027	.175	.091	.027	
8.0	.186	.091	.026	.182	.090	.025	.176	.088	.025	.170	.086	.025	.164	.084	.025	
9.0	.174	.084	.024	.171	.083	.023	.165	.082	.023	.160	.080	.023	.155	.079	.023	
10.0	.164	.078	.022	.161	.078	.022	.156	.076	.021	.151	.075	.021	.146	.073	.021	

pcc	80%			70%			50%			30%			10%			0
pw	50%	30%	10%	50%	30%	10%	50%	30%	10%	50%	30%	10%	50%	30%	10%	0
pfc	20%			20%			20%			20%			20%			0
RCR	RCR:Room Cavity Ratio						Ceiling Cavity Exitance Coefficients(CCEC)									
0.0	.203	.203	.203	.173	.173	.173	.118	.118	.118	.068	.068	.068	.022	.022	.022	
1.0	.193	.169	.146	.166	.145	.126	.113	.100	.087	.065	.058	.051	.021	.019	.016	
2.0	.185	.145	.110	.159	.124	.095	.109	.086	.066	.063	.050	.039	.020	.016	.013	
3.0	.178	.127	.087	.152	.110	.075	.105	.076	.053	.060	.044	.031	.019	.014	.010	
4.0	.170	.114	.071	.146	.098	.062	.100	.069	.043	.058	.040	.026	.019	.013	.008	
5.0	.162	.103	.060	.140	.090	.052	.096	.063	.037	.056	.037	.022	.018	.012	.007	
6.0	.155	.095	.052	.133	.082	.045	.092	.058	.032	.053	.034	.019	.017	.011	.006	
7.0	.148	.088	.046	.128	.077	.040	.088	.054	.028	.051	.032	.017	.017	.010	.006	
8.0	.142	.082	.042	.122	.072	.036	.085	.050	.026	.049	.030	.015	.016	.010	.005	
9.0	.136	.078	.038	.117	.067	.033	.081	.047	.024	.047	.028	.014	.015	.009	.005	
10.0	.130	.073	.035	.112	.064	.031	.078	.045	.022	.045	.026	.013	.015	.009	.004	

C Range: 0 - 360DEG
 C Interval: 30.0DEG
 Test Speed: HIGH
 Temperature:25.3DEG
 Operators:LPC
 Test Date:2021-12-27

γ Range: 0 - 120DEG
 γ Interval: 1.0DEG
 Test System:EVERFINE GO-2000B_V1 SYSTEM V2.0.362
 Humidity:65.0%
 Test Distance:9.200m [K=1.0000]
 Remarks:

UGR(Unified Glare Rating) Table

Test:U:48.00V I:0.2912A P:13.98W PF:1.000 Freq:50.00Hz Lamp Flux:182.617x1 lm											
NAME: SF15-48V-5050-60-RGB					TYPE:硅胶			WEIGHT:			
SPEC.:					DIM.: 21mm*11.5mm			SERIAL No.:2021122712			
MFR.: OLYMPIA					SUR.:1*0.0115			Shielding Angle:			
ceiling/cavity	0.7	0.7	0.5	0.5	0.3	0.7	0.7	0.5	0.5	0.3	
walls	0.5	0.3	0.5	0.3	0.3	0.5	0.3	0.5	0.3	0.3	
working plane	0.2	0.2	0.2	0.2	0.2	0.2	0.2	0.2	0.2	0.2	
Room dimensions		Viewed crosswise				Viewed endwise					
x = 2H y = 2H	25.1	26.6	25.4	26.8	27.1	24.2	25.7	24.5	26.0	26.2	
	3H	26.9	28.3	27.2	28.5	28.8	25.6	27.0	25.9	27.3	27.5
	4H	27.7	29.0	28.0	29.3	29.6	26.1	27.4	26.4	27.7	28.0
	6H	28.4	29.7	28.8	30.0	30.3	26.4	27.6	26.7	27.9	28.3
	8H	28.7	29.9	29.1	30.2	30.5	26.4	27.6	26.8	28.0	28.3
	12H	29.0	30.1	29.3	30.5	30.8	26.4	27.6	26.8	27.9	28.3
4H	2H	25.8	27.1	26.1	27.4	27.7	25.1	26.4	25.5	26.7	27.0
	3H	27.8	29.0	28.2	29.3	29.6	26.8	28.0	27.2	28.3	28.6
	4H	28.8	29.8	29.2	30.2	30.6	27.5	28.5	27.9	28.9	29.3
	6H	29.6	30.6	30.1	31.0	31.4	27.9	28.9	28.4	29.3	29.7
	8H	30.0	30.9	30.5	31.3	31.7	28.1	28.9	28.5	29.3	29.8
	12H	30.4	31.2	30.8	31.6	32.0	28.1	28.9	28.5	29.3	29.8
8H	4H	29.1	30.0	29.6	30.4	30.8	28.0	28.9	28.5	29.3	29.7
	6H	30.2	31.0	30.7	31.4	31.9	28.8	29.5	29.3	30.0	30.4
	8H	30.8	31.4	31.3	31.9	32.4	29.1	29.7	29.5	30.2	30.7
	12H	31.3	31.8	31.8	32.3	32.8	29.2	29.8	29.7	30.3	30.8
12H	4H	29.2	30.0	29.6	30.4	30.8	28.1	28.9	28.6	29.4	29.8
	6H	30.4	31.0	30.8	31.5	31.9	29.0	29.7	29.5	30.1	30.6
	8H	31.0	31.5	31.5	32.0	32.5	29.4	29.9	29.9	30.4	30.9
Variations with the observer position at spacings:											
S = 1.0H	+ 0.1 / - 0.2					+ 0.1 / - 0.2					
1.5H	+ 0.2 / - 0.3					+ 0.3 / - 0.4					
2.0H	+ 0.1 / - 0.4					+ 0.2 / - 0.5					

CIE Pub.117, 182.6 lm Total Lamp Luminous Flux Correct (8log(F/F0) = -5.9)

C Range: 0 - 360DEG
C Interval: 30.0DEG
Test Speed: HIGH
Temperature:25.3DEG
Operators:LPC
Test Date:2021-12-27

γ Range: 0 - 120DEG
γ Interval: 1.0DEG
Test System:EVERFINE GO-2000B_V1 SYSTEM V2.0.362
Humidity:65.0%
Test Distance:9.200m [K=1.0000]
Remarks:

UTILIZATION FACTORS TABLE

Test:U:48.00V I:0.2912A P:13.98W PF:1.000 Freq:50.00Hz Lamp Flux:182.617x1 lm		
NAME: SF15-48V-5050-60-RGB	TYPE: 硅胶	WEIGHT:
SPEC.:	DIM.: 21mm*11.5mm	SERIAL No.:2021122712
MFR.: OLYMPIA	SUR.:1*0.0115	Shielding Angle:

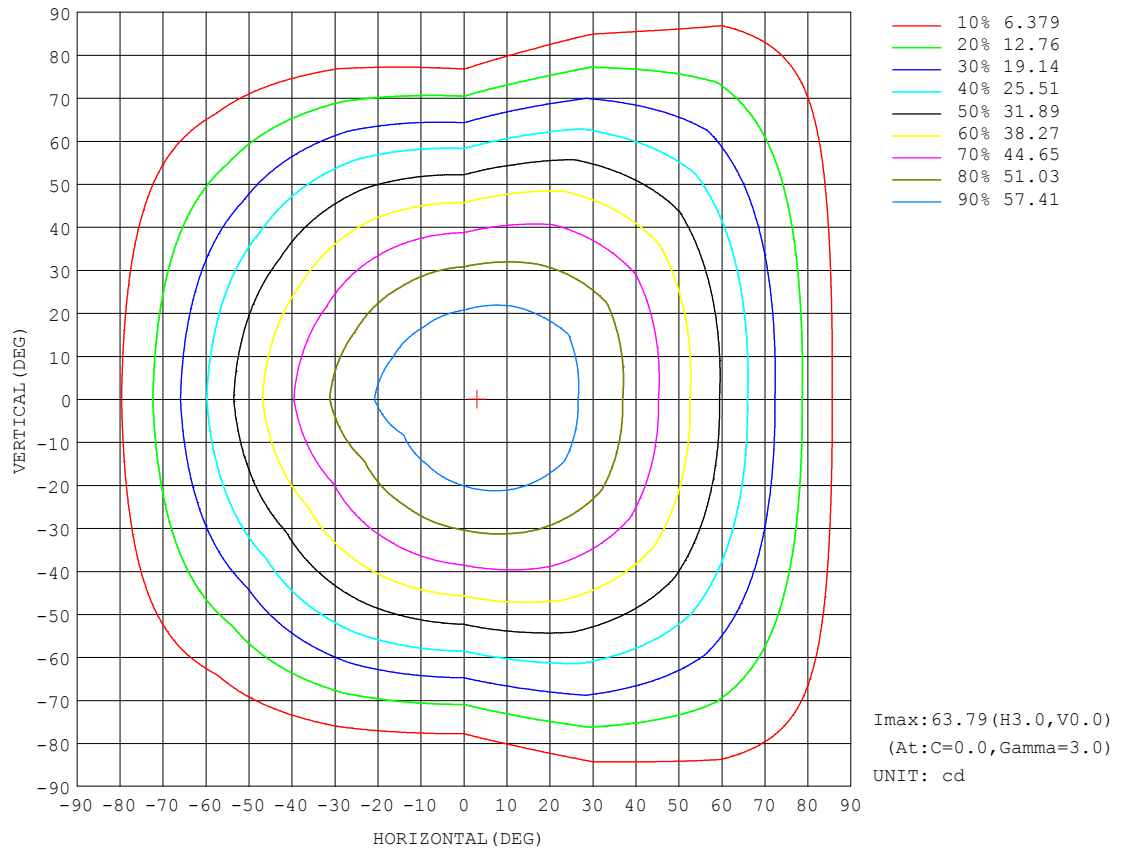
REFLECTANCE										
Ceiling	0.8	0.8	0.8	0.7	0.7	0.7	0.5	0.5	0.5	0
Walls	0.7	0.5	0.3	0.7	0.5	0.3	0.7	0.5	0.3	0
Working plane	0.2	0.2	0.2	0.2	0.2	0.2	0.2	0.2	0.2	0
ROOM INDEX	UTILIZATION FACTORS (PERCENT) $k(RI) \times RCR = 5$									
$k = 0.60$	57	45	38	56	45	38	55	44	38	31
0.80	67	55	48	66	55	47	64	54	47	40
1.00	75	64	56	74	63	56	71	64	55	48
1.25	82	71	64	81	71	64	78	69	63	55
1.50	87	77	70	85	76	69	82	74	68	60
2.00	94	85	78	92	84	78	88	82	76	68
2.50	98	90	84	96	88	83	92	86	81	72
3.00	101	94	88	99	92	87	95	89	85	76
4.00	105	99	95	103	98	93	98	94	90	81
5.00	108	103	98	105	101	97	100	97	94	84
ROOM INDEX	UF (total)									Direct
According to DIN EN 13032-2 2004			Suspended					SHRNOM = 1.25		

C Range: 0 - 360DEG
C Interval: 30.0DEG
Test Speed: HIGH
Temperature:25.3DEG
Operators:LPC
Test Date:2021-12-27

γ Range: 0 - 120DEG
 γ Interval: 1.0DEG
Test System:EVERFINE GO-2000B_V1 SYSTEM V2.0.362
Humidity:65.0%
Test Distance:9.200m [K=1.0000]
Remarks:

ISOCANDELA DIAGRAM

Test:U:48.00V I:0.2912A P:13.98W PF:1.000 Freq:50.00Hz Lamp Flux:182.617x1 lm		
NAME: SF15-48V-5050-60-RGB	TYPE: 硅胶	WEIGHT:
SPEC.:	DIM.: 21mm*11.5mm	SERIAL No.:2021122712
MFR.: OLYMPIA	SUR.:1*0.0115	Shielding Angle:

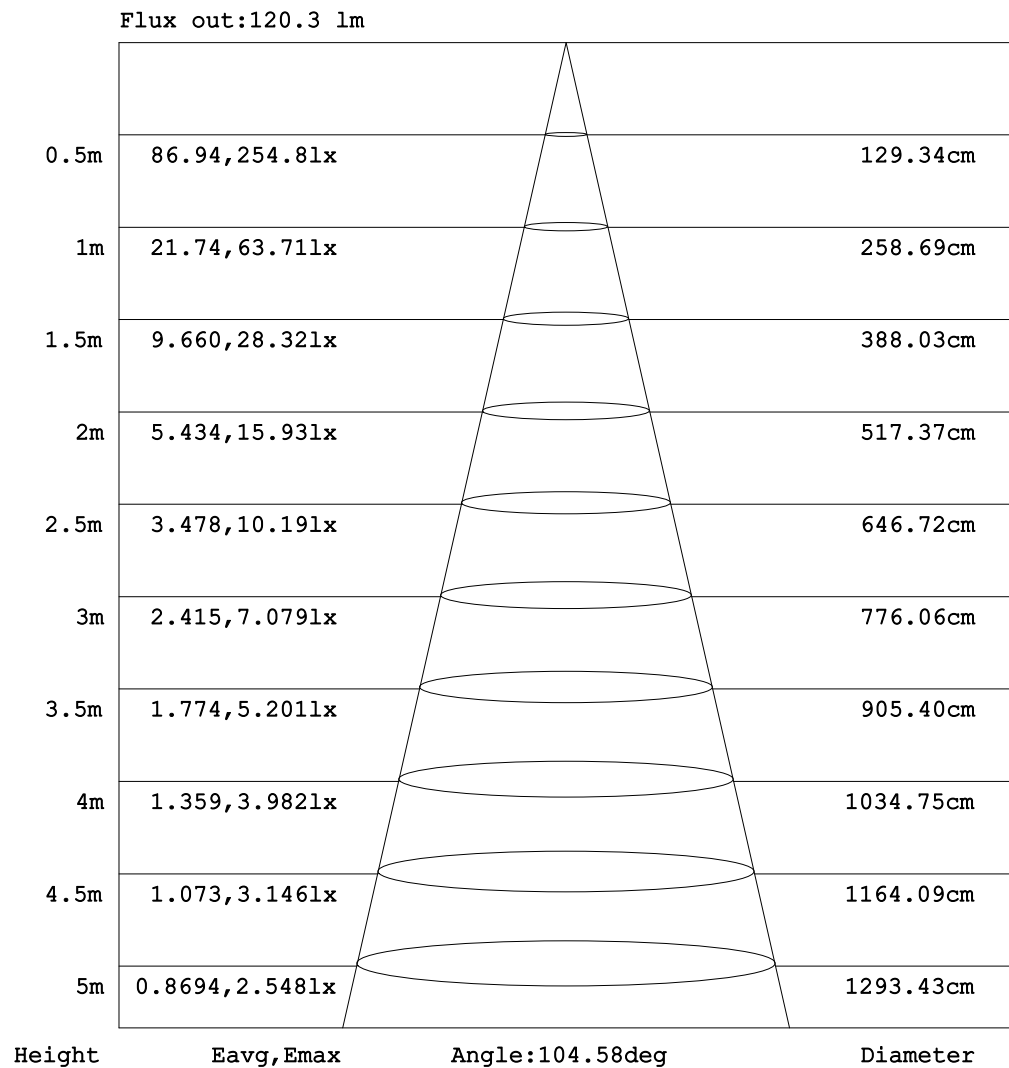


C Range: 0 - 360DEG
C Interval: 30.0DEG
Test Speed: HIGH
Temperature: 25.3DEG
Operators: LPC
Test Date: 2021-12-27

γ Range: 0 - 120DEG
 γ Interval: 1.0DEG
Test System: EVERFINE GO-2000B_V1 SYSTEM V2.0.362
Humidity: 65.0%
Test Distance: 9.200m [K=1.0000]
Remarks:

AAI Figure

Test:U:48.00V I:0.2912A P:13.98W PF:1.000 Freq:50.00Hz Lamp Flux:182.617x1 lm		
NAME: SF15-48V-5050-60-RGB	TYPE: 硅胶	WEIGHT:
SPEC.:	DIM.: 21mm*11.5mm	SERIAL No.:2021122712
MFR.: OLYMPIA	SUR.:1*0.0115	Shielding Angle:



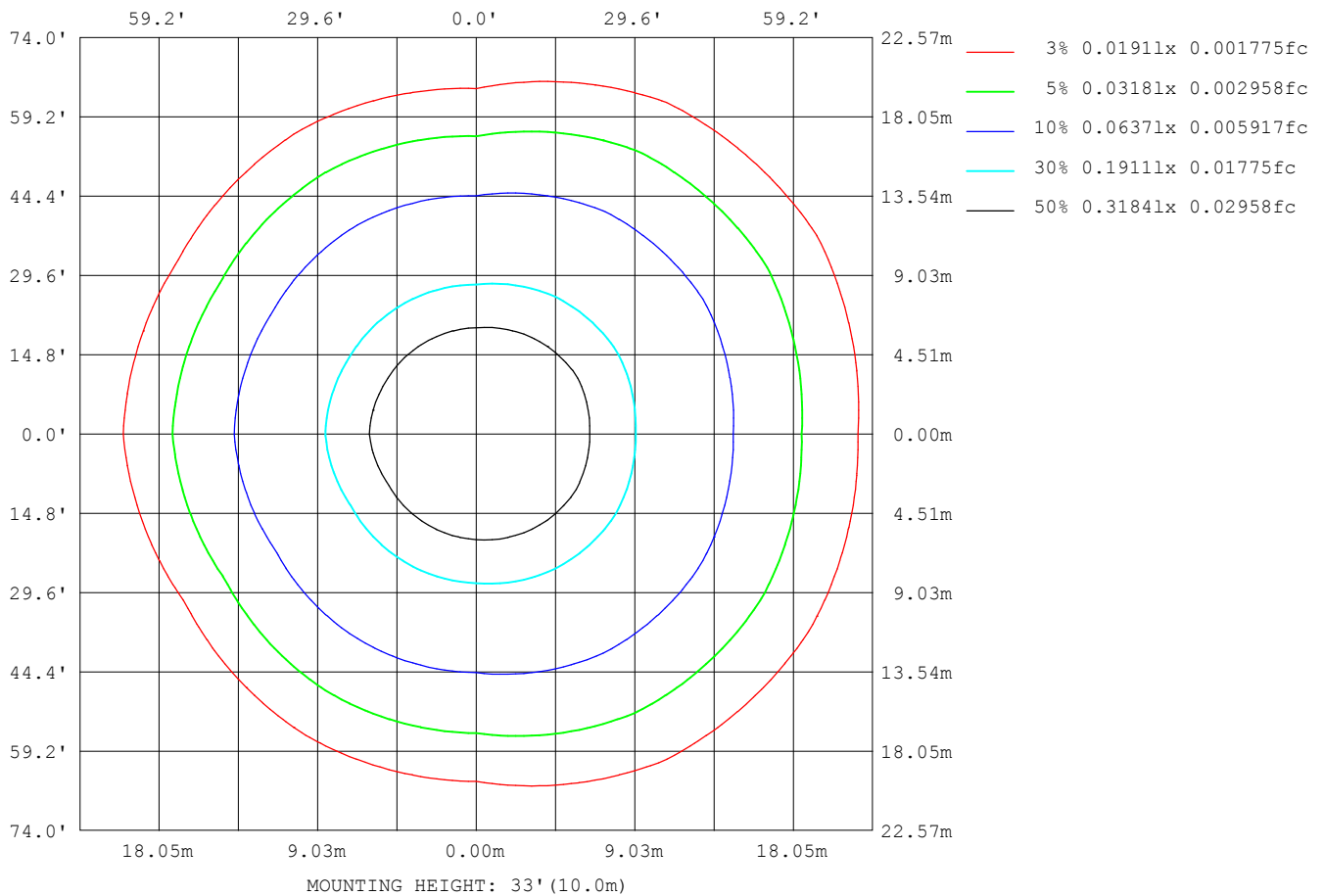
Note: The Curves indicate the illuminated area and the average illumination when the luminaire is at different distance.

C Range: 0 - 360DEG
 C Interval: 30.0DEG
 Test Speed: HIGH
 Temperature: 25.3DEG
 Operators: LPC
 Test Date: 2021-12-27

γ Range: 0 - 120DEG
 γ Interval: 1.0DEG
 Test System: EVERFINE GO-2000B_V1 SYSTEM V2.0.362
 Humidity: 65.0%
 Test Distance: 9.200m [K=1.0000]
 Remarks:

ISOLUX DIAGRAM

Test:U:48.00V I:0.2912A P:13.98W PF:1.000 Freq:50.00Hz Lamp Flux:182.617x1 lm		
NAME: SF15-48V-5050-60-RGB	TYPE: 硅胶	WEIGHT:
SPEC.:	DIM.: 21mm*11.5mm	SERIAL No.:2021122712
MFR.: OLYMPIA	SUR.:1*0.0115	Shielding Angle:



C Range: 0 - 360DEG
 C Interval: 30.0DEG
 Test Speed: HIGH
 Temperature: 25.3DEG
 Operators: LPC
 Test Date: 2021-12-27

γ Range: 0 - 120DEG
 γ Interval: 1.0DEG
 Test System: EVERFINE GO-2000B_V1 SYSTEM V2.0.362
 Humidity: 65.0%
 Test Distance: 9.200m [K=1.0000]
 Remarks:

LED Avg.L Report

Test:U:48.00V I:0.2912A P:13.98W PF:1.000 Freq:50.00Hz Lamp Flux:182.617x1 lm		
NAME: SF15-48V-5050-60-RGB	TYPE:硅胶	WEIGHT:
SPEC.:	DIM.: 21mm*11.5mm	SERIAL No.:2021122712
MFR.: OLYMPIA	SUR.:1*0.0115	Shielding Angle:

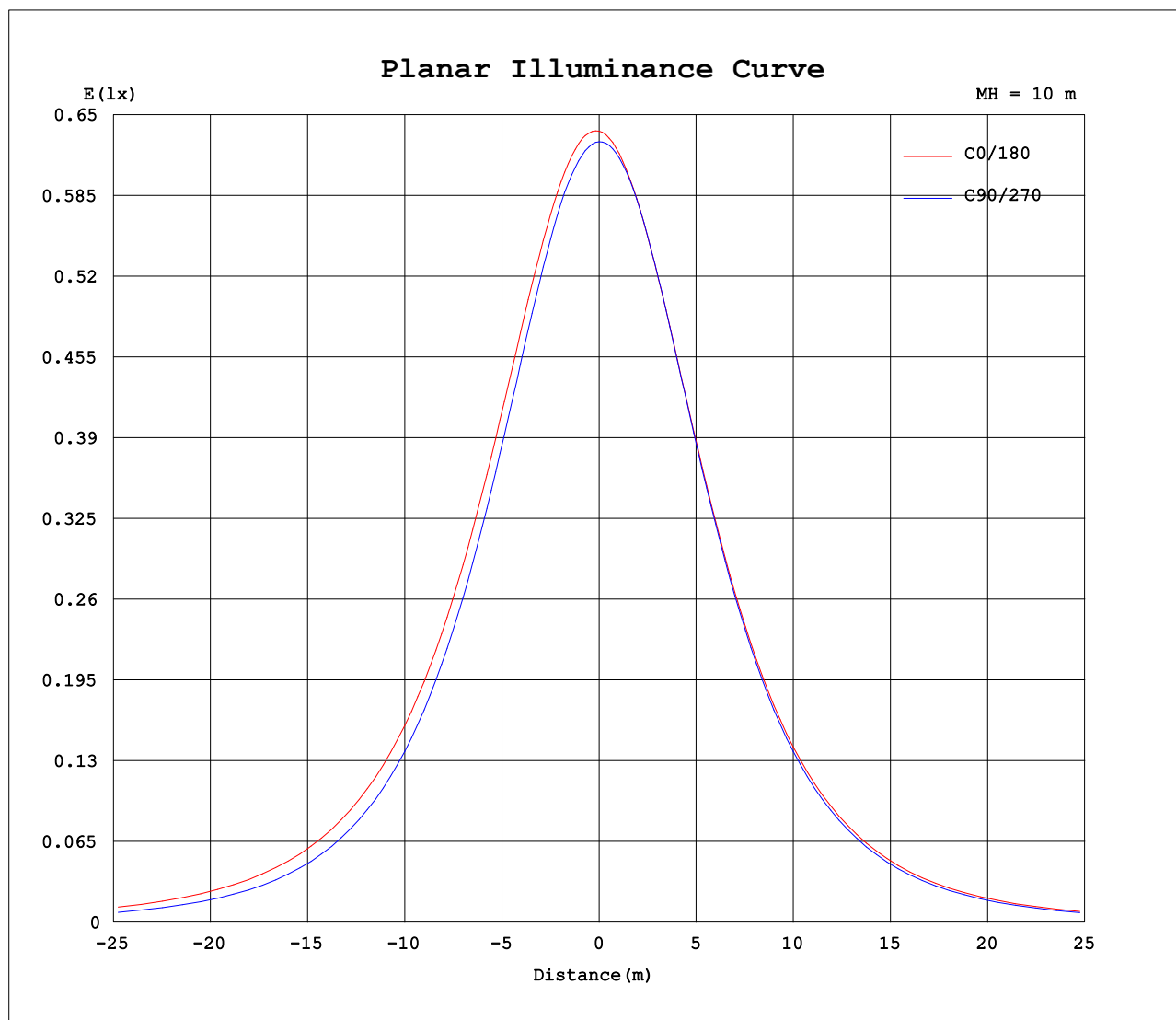
AvgL	cd/m2
L_0~180 (65) av	4786
L_0~180 (75) av	4486
L_0~180 (85) av	4949
L_90~270 (65) av	3832
L_90~270 (75) av	2857
L_90~270 (85) av	752
L_45 (65) av	4738
L_45 (75) av	4449
L_45 (85) av	5041

Standard: GB/T 29293-2012

C Range: 0 - 360DEG
C Interval: 30.0DEG
Test Speed: HIGH
Temperature:25.3DEG
Operators:LPC
Test Date:2021-12-27

γ Range: 0 - 120DEG
γ Interval: 1.0DEG
Test System:EVERFINE GO-2000B_V1 SYSTEM V2.0.362
Humidity:65.0%
Test Distance:9.200m [K=1.0000]
Remarks:

Planar Illuminance Curve



C Range: 0 - 360DEG
C Interval: 30.0DEG
Test Speed: HIGH
Temperature: 25.3DEG
Operators: LPC
Test Date: 2021-12-27

γ Range: 0 - 120DEG
 γ Interval: 1.0DEG
Test System: EVERFINE GO-2000B_V1 SYSTEM V2.0.362
Humidity: 65.0%
Test Distance: 9.200m [K=1.0000]
Remarks:

LUMINOUS DISTRIBUTION INTENSITY DATA

Test:U:48.00V I:0.2912A P:13.98W PF:1.000 Freq:50.00Hz Lamp Flux:182.617x1 lm		
NAME: SF15-48V-5050-60-RGB	TYPE: 硅胶	WEIGHT:
SPEC.:	DIM.: 21mm*11.5mm	SERIAL No.:2021122712
MFR.: OLYMPIA	SUR.:1*0.0115	Shielding Angle:

Table--1

UNIT: cd

C (DEG) γ (DEG)	0	30	60	90	120	150	180	210	240	270	300	330						
0	63.7	63.4	63.0	62.8	62.8	62.7	63.7	63.4	63.0	62.8	62.8	62.7						
5	63.8	63.5	63.0	62.4	61.9	61.7	63.1	62.6	62.4	62.6	62.9	63.1						
10	63.2	63.1	62.5	61.5	60.6	60.1	61.9	61.2	61.2	61.8	62.5	63.0						
15	62.1	62.2	61.2	59.8	58.6	58.0	60.1	59.3	59.4	60.1	61.3	62.2						
20	60.4	60.7	59.2	57.5	56.0	55.5	57.8	56.9	57.0	57.8	59.5	60.7						
25	58.2	58.5	56.8	54.6	53.1	52.5	55.1	54.0	54.1	54.9	57.1	58.9						
30	55.5	55.9	53.8	51.3	49.7	49.0	51.9	50.7	50.8	51.6	54.2	56.7						
35	52.3	52.8	50.5	47.6	46.1	45.2	48.3	47.0	47.2	47.8	51.2	53.8						
40	48.8	49.4	46.9	43.4	42.1	41.0	44.3	42.9	43.3	43.5	47.9	50.6						
45	44.8	45.6	43.1	39.0	37.8	36.5	40.0	38.5	39.1	38.9	44.4	46.9						
50	40.6	41.4	39.0	34.2	33.3	31.8	35.4	33.7	34.6	34.0	40.3	42.9						
55	36.1	37.0	34.6	29.2	28.6	26.8	30.4	28.8	29.8	28.9	36.0	38.6						
60	31.3	32.4	30.1	24.1	23.7	21.8	25.3	23.6	24.8	23.6	31.4	34.0						
65	26.4	27.6	25.3	18.9	18.7	16.8	20.1	18.4	19.7	18.4	26.5	29.3						
70	21.5	22.6	20.5	13.7	13.7	11.9	15.1	13.4	14.5	13.2	21.6	24.4						
75	16.4	17.6	15.7	8.93	8.90	7.46	10.3	8.63	9.58	8.08	16.6	19.4						
80	11.5	12.7	10.9	4.46	4.75	4.01	6.10	4.70	5.13	3.57	11.6	14.4						
85	6.91	8.00	6.42	0.99	1.95	1.84	3.01	2.06	1.89	0.52	6.85	9.46						
90	3.62	4.11	2.70	0.60	1.14	1.15	1.24	0.94	0.78	0.31	2.84	5.11						
95	1.78	1.95	1.20	0.64	1.12	1.12	0.78	0.87	0.75	0.32	0.99	2.32						
100	0.99	1.05	1.02	0.69	1.11	1.12	0.64	0.73	0.72	0.36	0.76	0.91						
105	0.91	1.02	0.87	0.76	0.96	1.13	0.49	0.78	0.66	0.46	0.62	0.73						
110	0.91	1.01	0.99	0.80	1.08	1.13	0.35	0.79	0.71	0.49	0.72	0.74						
115	0.91	1.01	1.02	0.84	1.09	1.14	0.20	0.81	0.81	0.52	0.76	0.76						
120	0.18	0.40	0.90	0.24	1.12	1.14	0.06	0.85	0.23	0.58	0.25	0.15						
125	0.00	0.00	0.00	0.00	0.00	0.00	0.00	0.00	0.00	0.00	0.00	0.00						
130	0.00	0.00	0.00	0.00	0.00	0.00	0.00	0.00	0.00	0.00	0.00	0.00						
135	0.00	0.00	0.00	0.00	0.00	0.00	0.00	0.00	0.00	0.00	0.00	0.00						
140	0.00	0.00	0.00	0.00	0.00	0.00	0.00	0.00	0.00	0.00	0.00	0.00						
145	0.00	0.00	0.00	0.00	0.00	0.00	0.00	0.00	0.00	0.00	0.00	0.00						
150	0.00	0.00	0.00	0.00	0.00	0.00	0.00	0.00	0.00	0.00	0.00	0.00						
155	0.00	0.00	0.00	0.00	0.00	0.00	0.00	0.00	0.00	0.00	0.00	0.00						
160	0.00	0.00	0.00	0.00	0.00	0.00	0.00	0.00	0.00	0.00	0.00	0.00						
165	0.00	0.00	0.00	0.00	0.00	0.00	0.00	0.00	0.00	0.00	0.00	0.00						
170	0.00	0.00	0.00	0.00	0.00	0.00	0.00	0.00	0.00	0.00	0.00	0.00						
175	0.00	0.00	0.00	0.00	0.00	0.00	0.00	0.00	0.00	0.00	0.00	0.00						
180	0.00	0.00	0.00	0.00	0.00	0.00	0.00	0.00	0.00	0.00	0.00	0.00						

C Range: 0 - 360DEG
C Interval: 30.0DEG
Test Speed: HIGH
Temperature:25.3DEG
Operators:LPC
Test Date:2021-12-27

γ Range: 0 - 120DEG
γ Interval: 1.0DEG
Test System:EVERFINE GO-2000B_V1 SYSTEM V2.0.362
Humidity:65.0%
Test Distance:9.200m [K=1.0000]
Remarks:

Photometric Data Table [cd]

G/C	0.0	30.0	60.0	90.0	120.0	150.0	180.0	210.0	240.0	270.0
0.0	63.69	63.38	62.99	62.83	62.75	62.67	63.69	63.38	62.99	62.83
3.0	63.79	63.53	63.06	62.67	62.34	62.13	63.38	62.97	62.70	62.80
6.0	63.72	63.48	62.96	62.31	61.71	61.39	62.87	62.35	62.20	62.52
9.0	63.38	63.26	62.62	61.74	60.90	60.46	62.14	61.55	61.53	62.03
12.0	62.83	62.82	62.04	60.91	59.87	59.34	61.22	60.51	60.60	61.20
15.0	62.08	62.20	61.17	59.81	58.57	58.05	60.11	59.27	59.41	60.12
18.0	61.13	61.34	60.09	58.46	57.10	56.56	58.82	57.95	57.98	58.86
21.0	59.99	60.27	58.79	56.98	55.46	54.89	57.33	56.32	56.40	57.23
24.0	58.66	58.99	57.30	55.25	53.68	53.11	55.68	54.61	54.66	55.61
27.0	57.17	57.54	55.64	53.35	51.78	51.05	53.85	52.68	52.79	53.57
30.0	55.50	55.89	53.82	51.33	49.73	49.00	51.89	50.69	50.80	51.62
33.0	53.64	54.18	51.86	49.10	47.57	46.72	49.77	48.48	48.70	49.30
36.0	51.66	52.23	49.82	46.74	45.29	44.33	47.51	46.19	46.47	46.94
39.0	49.51	50.10	47.69	44.29	42.88	41.85	45.11	43.72	44.12	44.39
42.0	47.24	47.97	45.43	41.69	40.39	39.23	42.60	41.15	41.66	41.71
45.0	44.84	45.57	43.10	38.96	37.80	36.52	39.96	38.48	39.08	38.93
48.0	42.33	43.16	40.67	36.17	35.11	33.72	37.25	35.66	36.42	35.99
51.0	39.71	40.60	38.16	33.23	32.38	30.82	34.42	32.74	33.64	33.04
54.0	36.99	37.94	35.55	30.21	29.53	27.85	31.44	29.79	30.79	30.00
57.0	34.20	35.26	32.82	27.16	26.63	24.84	28.41	26.74	27.81	26.86
60.0	31.34	32.42	30.05	24.07	23.69	21.76	25.32	23.56	24.80	23.62
63.0	28.43	29.54	27.25	20.95	20.70	18.73	22.17	20.49	21.71	20.50
66.0	25.46	26.62	24.40	17.84	17.70	15.77	19.05	17.40	18.65	17.31
69.0	22.46	23.63	21.52	14.75	14.69	12.83	16.06	14.35	15.55	14.20
72.0	19.46	20.63	18.62	11.75	11.73	10.03	13.09	11.45	12.50	11.17
75.0	16.44	17.64	15.71	8.933	8.895	7.462	10.27	8.628	9.575	8.076
78.0	13.43	14.66	12.80	6.184	6.301	5.236	7.641	6.083	6.817	5.225
81.0	10.52	11.73	9.985	3.627	4.047	3.438	5.401	4.066	4.334	2.746
84.0	7.755	8.911	7.257	1.567	2.358	2.148	3.537	2.458	2.382	0.7304
87.0	5.380	6.275	4.748	0.6729	1.395	1.406	2.133	1.430	1.174	0.3475
90.0	3.619	4.111	2.705	0.5981	1.136	1.151	1.239	0.9408	0.7790	0.3147
93.0	2.355	2.635	1.566	0.6233	1.124	1.131	0.8401	0.8795	0.7638	0.3188
96.0	1.570	1.697	1.102	0.6584	1.119	1.122	0.7532	0.8595	0.7437	0.3167
99.0	1.077	1.155	1.020	0.6836	1.114	1.124	0.6663	0.7546	0.7286	0.3567
102.0	0.9248	1.039	0.9804	0.7321	1.051	1.126	0.5794	0.7337	0.7137	0.4468
105.0	0.9133	1.022	0.8745	0.7562	0.9649	1.129	0.4925	0.7811	0.6634	0.4623
108.0	0.9090	1.011	0.9246	0.7802	1.005	1.131	0.4056	0.7878	0.6887	0.4790
111.0	0.9080	1.009	1.000	0.8042	1.085	1.134	0.3187	0.7946	0.7341	0.4957
114.0	0.9087	1.006	1.015	0.8343	1.091	1.136	0.2318	0.8077	0.7943	0.5124
117.0	0.9273	1.005	1.005	0.5996	1.102	1.138	0.1448	0.8242	0.5815	0.5276
120.0	0.1818	0.4021	0.9046	0.2398	1.116	1.141	0.0579	0.8544	0.2326	0.5830
G/C	300.0	330.0								
0.0	62.75	62.67								
3.0	62.90	62.99								
6.0	62.86	63.10								
9.0	62.64	63.07								
12.0	62.12	62.75								
15.0	61.35	62.21								
18.0	60.33	61.41								
21.0	59.08	60.34								
24.0	57.63	59.30								
27.0	55.99	58.00								
30.0	54.22	56.66								
33.0	52.41	55.01								
36.0	50.53	53.21								
39.0	48.60	51.25								
42.0	46.58	49.16								
45.0	44.38	46.94								
48.0	41.99	44.57								
51.0	39.47	42.10								
54.0	36.86	39.53								
57.0	34.15	36.83								
60.0	31.36	34.03								
63.0	28.48	31.25								
66.0	25.57	28.33								
69.0	22.57	25.39								
72.0	19.56	22.41								
75.0	16.56	19.40								
78.0	13.58	16.37								
81.0	10.63	13.38								
84.0	7.769	10.41								
87.0	5.119	7.578								
90.0	2.844	5.108								

C Range: 0 - 360DEG
 C Interval: 30.0DEG
 Test Speed: HIGH
 Temperature: 25.3DEG
 Operators: LPC
 Test Date: 2021-12-27

γ Range: 0 - 120DEG
 γ Interval: 1.0DEG
 Test System: EVERFINE GO-2000B_V1 SYSTEM V2.0.362
 Humidity: 65.0%
 Test Distance: 9.200m [K=1.0000]
 Remarks:

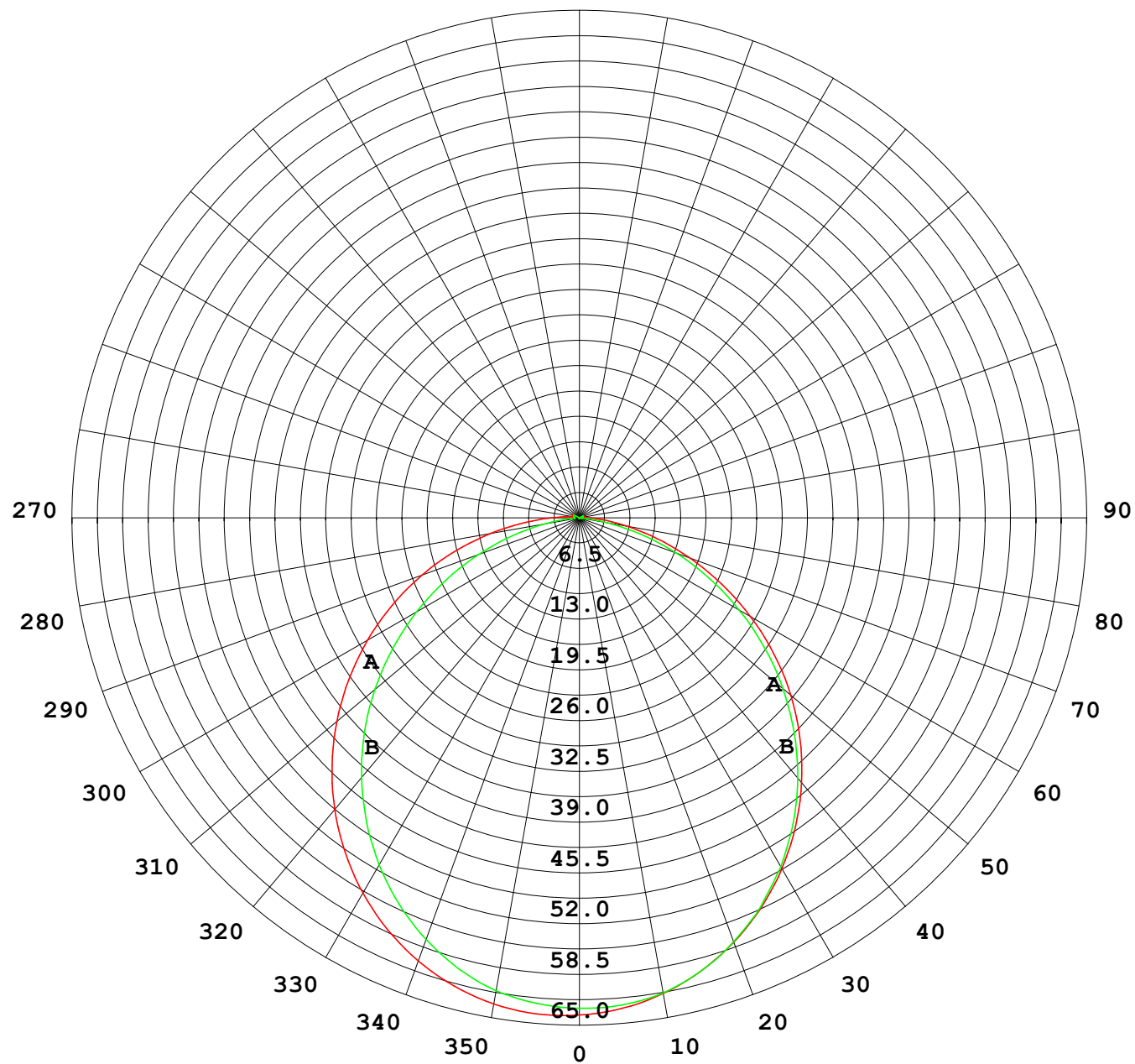
Photometric Data Table [cd]

93.0	1.465	3.231
96.0	0.8583	1.964
99.0	0.7859	1.159
102.0	0.7135	0.7241
105.0	0.6182	0.7295
108.0	0.6687	0.7350
111.0	0.7442	0.7487
114.0	0.7739	0.7539
117.0	0.6236	0.6071
120.0	0.2494	0.1518

C Range: 0 - 360DEG
C Interval: 30.0DEG
Test Speed: HIGH
Temperature: 25.3DEG
Operators: LPC
Test Date: 2021-12-27

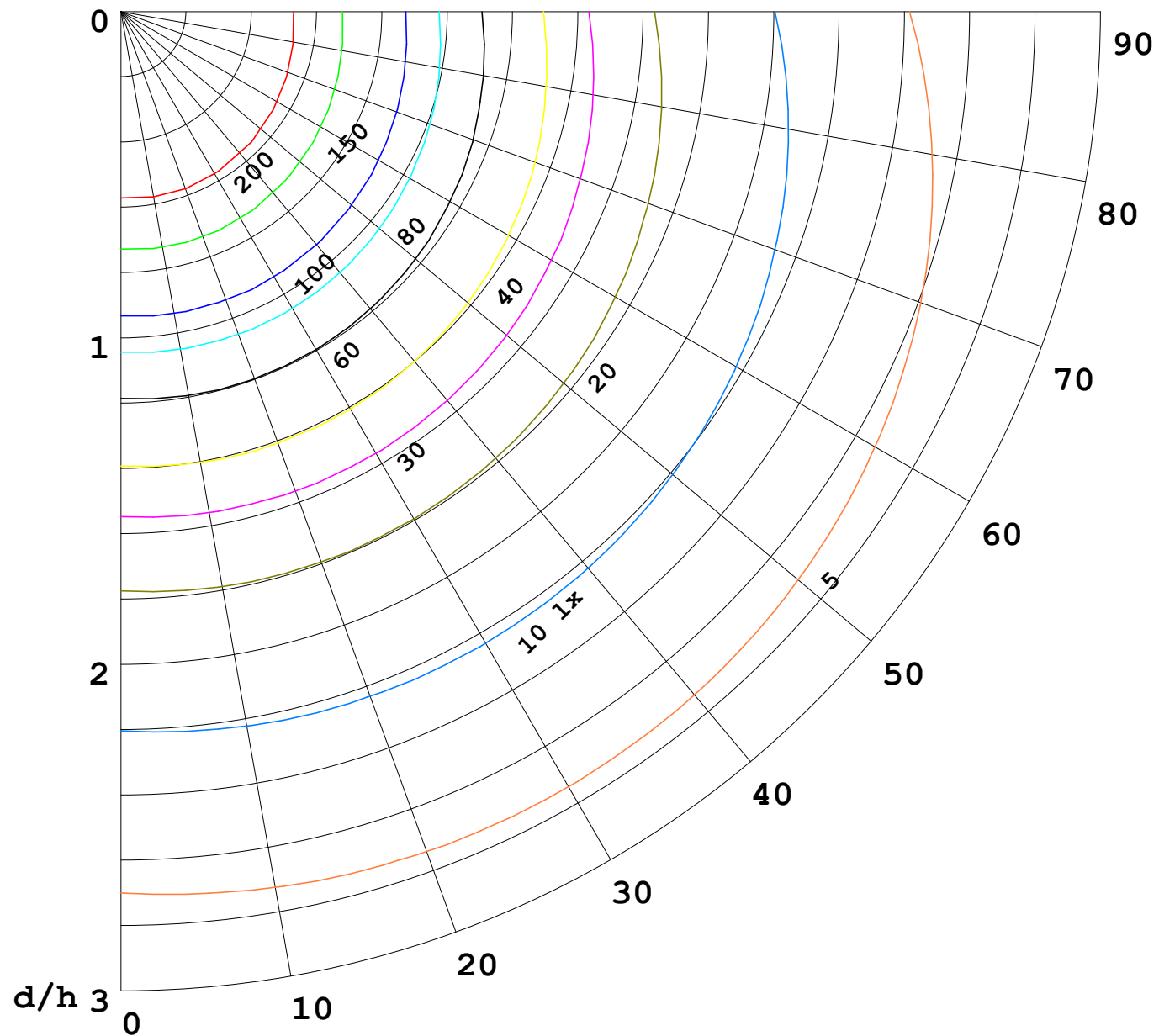
γ Range: 0 - 120DEG
γ Interval: 1.0DEG
Test System: EVERFINE GO-2000B_V1 SYSTEM V2.0.362
Humidity: 65.0%
Test Distance: 9.200m [K=1.0000]
Remarks:

I (cd)



1000 lm

$\kappa = 1$



F = 5000 lm
 K = 0.7
 Hcc = 0.0 m
 Hfc = 0.0 m
 Eave = 100 lx

	Pcc	Pw	Pfc
—	70	50	30
—	50	30	20

