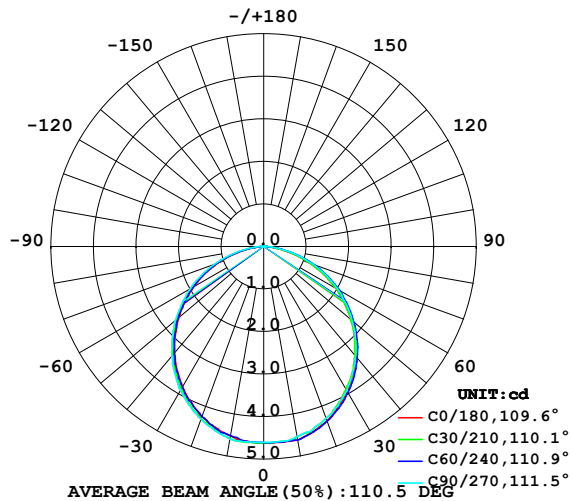


LUMINAIRE PHOTOMETRIC TEST REPORT

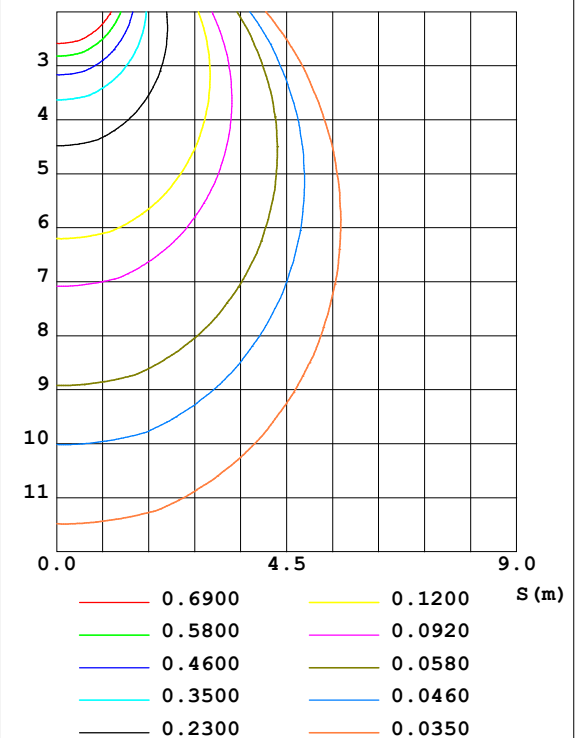
Test:U:24.00V I:0.1643A P:3.943W PF:1.000 Lamp Flux:12.8669x1 lm		
NAME: SF15-24V-5050-60-W12-RGB-B	TYPE: 硅胶	WEIGHT:
DIM.: 21MM*11.5MM	SPEC.:	SERIAL No.:202303002
MFR.: OLYMPIA	SUR.:1.0*0.0115	PROTECTION ANGLE:

DATA OF LAMP		PHOTOMETRIC DATA				Eff: 3.26 lm/W
MODEL	5050	I _{max} (cd)	4.620	S/MH (C0/180)	1.26	
NOMINAL POWER (W)	12	LOR (%)	100.0	S/MH (C90/270)	1.26	
RATED VOLTAGE (V)	24	TOTAL FLUX (lm)	12.867	η UP, DN (C0-180)	0.0, 50.4	
NOMINAL FLUX (lm)	12.8669	CIE CLASS	DIRECT	η UP, DN (C180-360)	0.1, 49.5	
LAMPS INSIDE	1	η up (%)	0.1	CIBSE SHR NOM	1.25	
TEST VOLTAGE (V)	24.0	η down (%)	99.9	CIBSE SHR MAX	1.35	

LUMINOUS INTENSITY DISTRIBUTION DIAGRAM



C0 PLANE ISOLUX DIAGRAM (UNIT:lx)



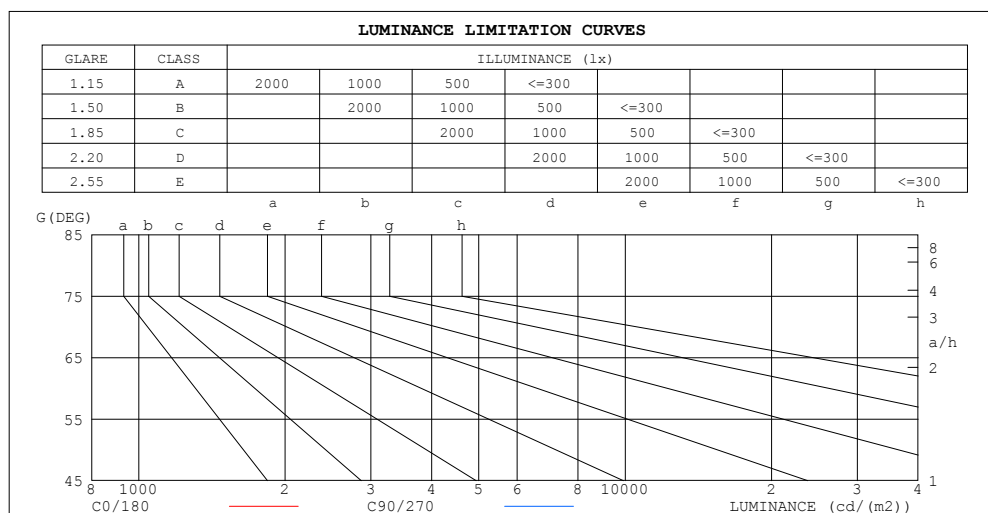
C Range: 0 - 360DEG
C Interval: 30.0DEG
Test Speed: HIGH
Temperature:25.3DEG
Operators:WFW
Test Date:2023-03-03

γ Range: 0 - 180DEG
γ Interval: 1.0DEG
Test System:EVERFINE GO-2000B_V1 SYSTEM V2.0.269
Humidity:65.0%
Test Distance:10.800m [K=1.0000]
Remarks:

ZONAL FLUX DIAGRAM
AND LUMINANCE LIMITATION CURVES

ZONAL FLUX DIAGRAM:

γ	C0	C45	C90	C135	C180	C225	C270	C315	γ	Φ zone	Φ total	%lum, lamp
10	4.620	4.578	4.529	4.557	4.515	4.550	4.599	4.557	0- 10	0.4386	0.4386	3.41,3.41
20	4.357	4.332	4.294	4.304	4.259	4.283	4.322	4.304	10- 20	1.257	1.696	13.2,13.2
30	3.928	3.920	3.913	3.889	3.809	3.851	3.907	3.872	20- 30	1.895	3.591	27.9,27.9
40	3.367	3.380	3.365	3.345	3.254	3.307	3.360	3.317	30- 40	2.268	5.860	45.5,45.5
50	2.709	2.715	2.714	2.698	2.596	2.649	2.722	2.659	40- 50	2.330	8.189	63.6,63.6
60	1.968	1.998	2.022	1.995	1.917	1.946	2.002	1.939	50- 60	2.081	10.27	79.8,79.8
70	1.164	1.209	1.246	1.223	1.142	1.194	1.240	1.153	60- 70	1.568	11.84	92,92
80	0.4162	0.4294	0.4772	0.4468	0.3661	0.4225	0.4924	0.3946	70- 80	0.8482	12.69	98.6,98.6
90	0	0.0104	0	0.0105	0	0	0.0555	0	80- 90	0.1653	12.85	99.9,99.9
100	0	0.0035	0	0	0	0	0.0484	0	90-100	0.0061	12.86	99.9,99.9
110	0	0.0035	0	0	0	0	0.0140	0	100-110	0.0035	12.86	100,100
120	0	0.0035	0	0	0	0	0.0069	0	110-120	0.0012	12.86	100,100
130	0	0.0035	0	0	0	0	0.0069	0	120-130	0.0010	12.86	100,100
140	0	0	0	0.0035	0	0	0.0069	0	130-140	0.0012	12.87	100,100
150	0	0	0	0.0035	0	0	0.0069	0	140-150	0.0007	12.87	100,100
160	0	0	0	0.0035	0	0	0.0069	0	150-160	0.0005	12.87	100,100
170	0	0	0	0.0035	0	0	0.0069	0	160-170	0.0003	12.87	100,100
180	0	0	0	0	0	0	0.0069	0	170-180	0.0001	12.87	100,100
DEG	LUMINOUS INTENSITY:cd									UNIT:lm		



LUMINANCE cd/(m2)		
G (DEG)	C0/180	C90/270
85	14	17
80	24	27
75	30	33
70	34	36
65	37	38
60	39	40
55	41	41
50	42	42
45	43	43

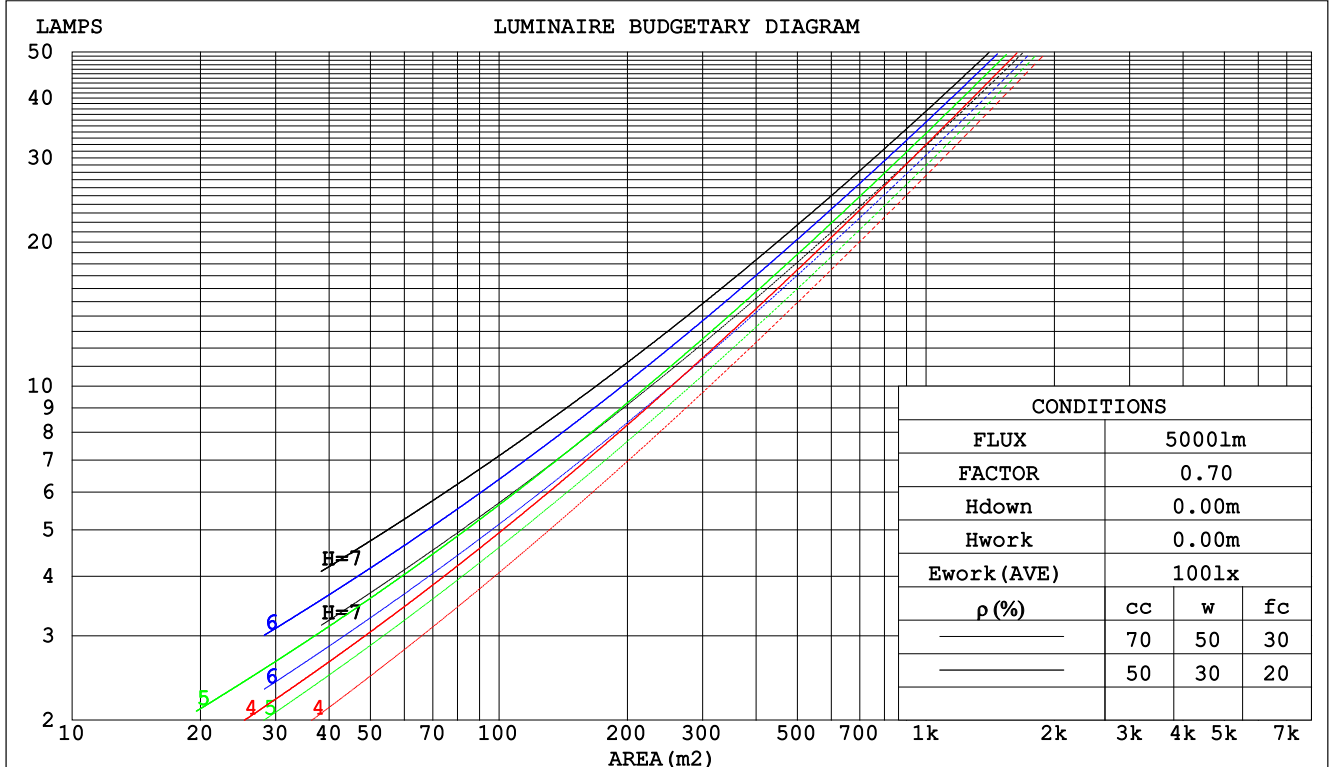
C Range: 0 - 360DEG
C Interval: 30.0DEG
Test Speed: HIGH
Temperature:25.3DEG
Operators:WFW
Test Date:2023-03-03

γ Range: 0 - 180DEG
 γ Interval: 1.0DEG
Test System:EVERFINE GO-2000B_V1 SYSTEM V2.0.269
Humidity:65.0%
Test Distance:10.800m [K=1.0000]
Remarks:

CU AND LUMINAIRE BUDGETARY ESTIMATE DIAGRAM

Test:U:24.00V I:0.1643A P:3.943W PF:1.000 Lamp Flux:12.8669x1 lm		
NAME: SF15-24V-5050-60-W12-RGB-B	TYPE: 硅胶	WEIGHT:
DIM.: 21MM*11.5MM	SPEC.:	SERIAL No.:202303002
MFR.: OLYMPIA	SUR.:1.0*0.0115	PROTECTION ANGLE:

pcc	80%			70%			50%			30%			10%			0
pw	50%	30%	10%	50%	30%	10%	50%	30%	10%	50%	30%	10%	50%	30%	10%	0
pfc	20%			20%			20%			20%			20%			0
RCR	RCR:Room Cavity Ratio			Coefficients of Utilization(CU)												
0.0	1.19	1.19	1.19	1.16	1.16	1.16	1.11	1.11	1.11	1.06	1.06	1.06	1.02	1.02	1.02	.00
1.0	1.04	1.00	.96	1.02	.98	.95	.98	.95	.92	.94	.91	.89	.90	.88	.86	.84
2.0	.91	.84	.79	.89	.83	.78	.86	.80	.76	.82	.78	.74	.79	.76	.72	.70
3.0	.80	.72	.65	.78	.71	.65	.75	.69	.64	.73	.67	.62	.70	.65	.61	.59
4.0	.71	.62	.55	.70	.61	.55	.67	.60	.54	.65	.58	.53	.62	.57	.53	.51
5.0	.63	.54	.48	.62	.54	.47	.60	.53	.47	.58	.52	.46	.56	.50	.46	.44
6.0	.57	.48	.42	.56	.48	.41	.54	.47	.41	.53	.46	.41	.51	.45	.40	.38
7.0	.52	.43	.37	.51	.43	.37	.49	.42	.36	.48	.41	.36	.46	.40	.36	.34
8.0	.47	.39	.33	.46	.38	.33	.45	.38	.33	.44	.37	.32	.43	.37	.32	.30
9.0	.43	.35	.30	.43	.35	.29	.42	.34	.29	.40	.34	.29	.39	.33	.29	.27
10.0	.40	.32	.27	.39	.32	.27	.38	.31	.27	.37	.31	.26	.37	.31	.26	.25



C Range: 0 - 360DEG
C Interval: 30.0DEG
Test Speed: HIGH
Temperature:25.3DEG
Operators:WFW
Test Date:2023-03-03

γ Range: 0 - 180DEG
γ Interval: 1.0DEG
Test System:EVERFINE GO-2000B_V1 SYSTEM V2.0.269
Humidity:65.0%
Test Distance:10.800m [K=1.0000]
Remarks:

WEC AND CCEC

Test:U:24.00V I:0.1643A P:3.943W PF:1.000 Lamp Flux:12.8669x1 lm					
NAME: SF15-24V-5050-60-W12-RGB-B			TYPE: 硅胶		WEIGHT:
DIM.: 21MM*11.5MM			SPEC.:		SERIAL No.:202303002
MFR.: OLYMPIA			SUR.:1.0*0.0115		PROTECTION ANGLE:

pcc	80%			70%			50%			30%			10%			0
pw	50%	30%	10%	50%	30%	10%	50%	30%	10%	50%	30%	10%	50%	30%	10%	0
pfc	20%			20%			20%			20%			20%			0
RCR	RCR:Room Cavity Ratio						Wall Exitance Coefficients(WEC)									
0.0																
1.0	.301	.171	.054	.294	.168	.053	.280	.161	.051	.268	.155	.050	.257	.149	.048	
2.0	.286	.157	.048	.280	.154	.047	.268	.149	.046	.257	.144	.045	.247	.140	.044	
3.0	.266	.142	.042	.261	.140	.042	.250	.136	.041	.241	.132	.040	.232	.128	.040	
4.0	.246	.128	.038	.241	.126	.037	.232	.123	.037	.224	.120	.036	.216	.117	.036	
5.0	.228	.116	.034	.224	.115	.033	.216	.112	.033	.208	.110	.033	.201	.107	.032	
6.0	.212	.106	.030	.208	.105	.030	.201	.103	.030	.194	.101	.030	.188	.099	.029	
7.0	.197	.098	.028	.194	.097	.028	.187	.095	.027	.181	.093	.027	.176	.091	.027	
8.0	.184	.090	.025	.181	.089	.025	.176	.088	.025	.170	.086	.025	.165	.085	.025	
9.0	.173	.084	.023	.170	.083	.023	.165	.082	.023	.160	.080	.023	.155	.079	.023	
10.0	.163	.078	.022	.160	.077	.022	.156	.076	.021	.151	.075	.021	.147	.074	.021	

pcc	80%			70%			50%			30%			10%			0
pw	50%	30%	10%	50%	30%	10%	50%	30%	10%	50%	30%	10%	50%	30%	10%	0
pfc	20%			20%			20%			20%			20%			0
RCR	RCR:Room Cavity Ratio						Ceiling Cavity Exitance Coefficients(CCEC)									
0.0	.191	.191	.191	.164	.164	.164	.112	.112	.112	.064	.064	.064	.021	.021	.021	
1.0	.181	.157	.136	.154	.135	.117	.106	.093	.081	.061	.054	.047	.019	.017	.015	
2.0	.172	.133	.100	.148	.114	.086	.101	.079	.060	.058	.046	.035	.019	.015	.011	
3.0	.165	.115	.076	.141	.099	.066	.097	.069	.046	.056	.040	.027	.018	.013	.009	
4.0	.157	.102	.060	.135	.088	.052	.093	.061	.036	.054	.036	.022	.017	.012	.007	
5.0	.150	.091	.048	.129	.079	.042	.089	.055	.030	.051	.032	.018	.017	.011	.006	
6.0	.143	.083	.040	.123	.072	.035	.085	.050	.025	.049	.030	.015	.016	.010	.005	
7.0	.136	.076	.034	.117	.066	.030	.081	.046	.021	.047	.027	.013	.015	.009	.004	
8.0	.129	.070	.030	.111	.061	.026	.077	.043	.018	.045	.025	.011	.015	.008	.004	
9.0	.123	.065	.026	.106	.057	.023	.074	.040	.016	.043	.024	.010	.014	.008	.003	
10.0	.118	.061	.023	.101	.053	.020	.070	.037	.015	.041	.022	.009	.013	.007	.003	

C Range: 0 - 360DEG
 C Interval: 30.0DEG
 Test Speed: HIGH
 Temperature:25.3DEG
 Operators:WFW
 Test Date:2023-03-03

γ Range: 0 - 180DEG
 γ Interval: 1.0DEG
 Test System:EVERFINE GO-2000B_V1 SYSTEM V2.0.269
 Humidity:65.0%
 Test Distance:10.800m [K=1.0000]
 Remarks:

Uncorrected UGR Table

Test:U:24.00V I:0.1643A P:3.943W PF:1.000 Lamp Flux:12.8669x1 lm										
NAME: SF15-24V-5050-60-W12-RGB-B					TYPE: 硅胶			WEIGHT:		
DIM.: 21MM*11.5MM					SPEC.:			SERIAL No.:202303002		
MFR.: OLYMPIA					SUR.:1.0*0.0115			PROTECTION ANGLE:		
ceiling/cavity	0.7	0.7	0.5	0.5	0.3	0.7	0.7	0.5	0.5	0.3
walls	0.5	0.3	0.5	0.3	0.3	0.5	0.3	0.5	0.3	0.3
working plane	0.2	0.2	0.2	0.2	0.2	0.2	0.2	0.2	0.2	0.2
Room dimensions	Viewed crosswise					Viewed endwise				
x = 2H y = 2H	1.7	3.2	2.0	3.4	3.6	1.9	3.4	2.2	3.7	3.9
3H	3.1	4.5	3.4	4.8	5.0	3.4	4.8	3.7	5.1	5.3
4H	3.6	5.0	4.0	5.2	5.5	4.0	5.3	4.3	5.6	5.8
6H	3.9	5.2	4.3	5.4	5.7	4.4	5.6	4.7	5.9	6.2
8H	4.0	5.2	4.3	5.5	5.8	4.4	5.6	4.8	5.9	6.2
12H	4.0	5.1	4.3	5.4	5.7	4.4	5.6	4.8	5.9	6.2
4H 2H	2.3	3.7	2.7	3.9	4.2	2.5	3.8	2.8	4.1	4.4
3H	3.9	5.1	4.3	5.4	5.7	4.2	5.4	4.6	5.7	6.0
4H	4.5	5.6	4.9	5.9	6.2	4.9	5.9	5.3	6.3	6.6
6H	4.9	5.8	5.3	6.2	6.5	5.4	6.3	5.8	6.7	7.0
8H	5.0	5.8	5.4	6.2	6.6	5.5	6.4	5.9	6.7	7.1
12H	5.0	5.8	5.4	6.2	6.6	5.5	6.3	6.0	6.7	7.1
8H 4H	4.7	5.6	5.2	6.0	6.4	5.1	6.0	5.5	6.3	6.7
6H	5.2	5.9	5.7	6.3	6.8	5.7	6.4	6.1	6.8	7.3
8H	5.4	6.0	5.8	6.4	6.9	5.9	6.5	6.4	7.0	7.4
12H	5.4	6.0	5.9	6.4	6.9	6.0	6.6	6.5	7.0	7.5
12H 4H	4.8	5.6	5.2	5.9	6.3	5.1	5.9	5.5	6.3	6.7
6H	5.3	5.9	5.7	6.3	6.8	5.7	6.4	6.2	6.8	7.2
8H	5.4	6.0	5.9	6.4	6.9	6.0	6.5	6.4	7.0	7.4
Variations with the observer position at spacings:										
S = 1.0H	+ 0.2 / - 0.2					+ 0.2 / - 0.2				
1.5H	+ 0.2 / - 0.3					+ 0.2 / - 0.3				
2.0H	+ 0.2 / - 0.3					+ 0.2 / - 0.3				

CIE Pub.117 Corrected 12.87 lm Total Lamp Luminous Flux.(8log(F/F0) = -15.1)

C Range: 0 - 360DEG
C Interval: 30.0DEG
Test Speed: HIGH
Temperature:25.3DEG
Operators:WFW
Test Date:2023-03-03

γ Range: 0 - 180DEG
γ Interval: 1.0DEG
Test System:EVERFINE GO-2000B_V1 SYSTEM V2.0.269
Humidity:65.0%
Test Distance:10.800m [K=1.0000]
Remarks:

UTILIZATION FACTORS TABLE

Test:U:24.00V I:0.1643A P:3.943W PF:1.000 Lamp Flux:12.8669x1 lm		
NAME: SF15-24V-5050-60-W12-RGB-B	TYPE: 硅胶	WEIGHT:
DIM.: 21MM*11.5MM	SPEC.:	SERIAL No.:202303002
MFR.: OLYMPIA	SUR.:1.0*0.0115	PROTECTION ANGLE:

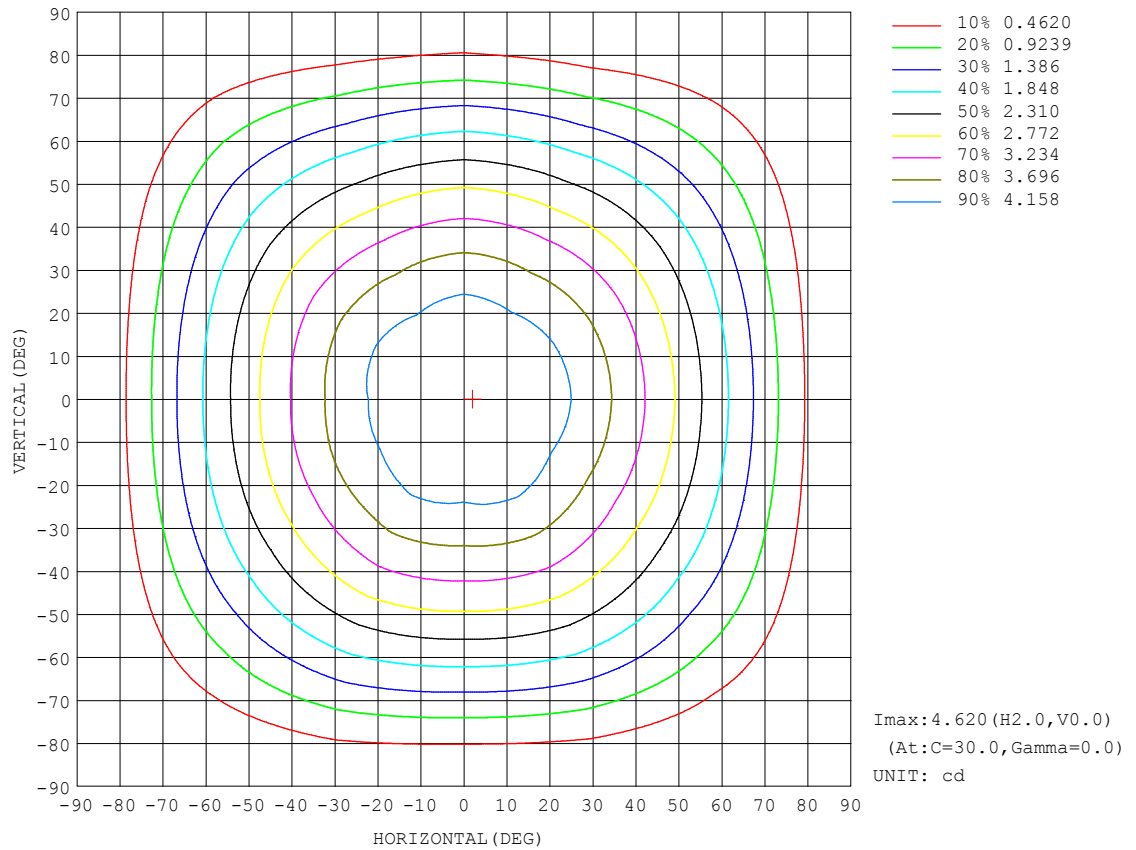
REFLECTANCE										
Ceiling	0.8	0.8	0.8	0.7	0.7	0.7	0.5	0.5	0.5	0
Walls	0.7	0.5	0.3	0.7	0.5	0.3	0.7	0.5	0.3	0
Working plane	0.2	0.2	0.2	0.2	0.2	0.2	0.2	0.2	0.2	0
ROOM INDEX	UTILIZATION FACTORS (PERCENT) $k(RI) \times RCR = 5$									
$k = 0.60$	58	46	40	57	46	39	56	46	39	33
0.80	68	57	49	67	56	49	65	55	49	42
1.00	77	66	58	75	65	58	73	66	57	50
1.25	84	73	66	82	73	66	80	71	65	58
1.50	89	79	72	87	78	71	84	76	70	63
2.00	95	87	81	94	86	80	90	84	78	71
2.50	99	92	86	97	90	85	93	88	83	75
3.00	103	96	91	100	94	89	96	91	87	79
4.00	107	101	97	104	99	95	100	96	92	84
5.00	109	104	100	107	102	99	102	99	96	87
ROOM INDEX	UF(total)									Direct
According to DIN EN 13032-2 2004			Suspended					SHRNM = 1.25		

C Range: 0 - 360DEG
 C Interval: 30.0DEG
 Test Speed: HIGH
 Temperature:25.3DEG
 Operators:WFW
 Test Date:2023-03-03

γ Range: 0 - 180DEG
 γ Interval: 1.0DEG
 Test System:EVERFINE GO-2000B_V1 SYSTEM V2.0.269
 Humidity:65.0%
 Test Distance:10.800m [K=1.0000]
 Remarks:

ISOCANDELA DIAGRAM

Test:U:24.00V I:0.1643A P:3.943W PF:1.000 Lamp Flux:12.8669x1 lm		
NAME: SF15-24V-5050-60-W12-RGB-B	TYPE: 硅胶	WEIGHT:
DIM.: 21MM*11.5MM	SPEC.:	SERIAL No.:202303002
MFR.: OLYMPIA	SUR.:1.0*0.0115	PROTECTION ANGLE:

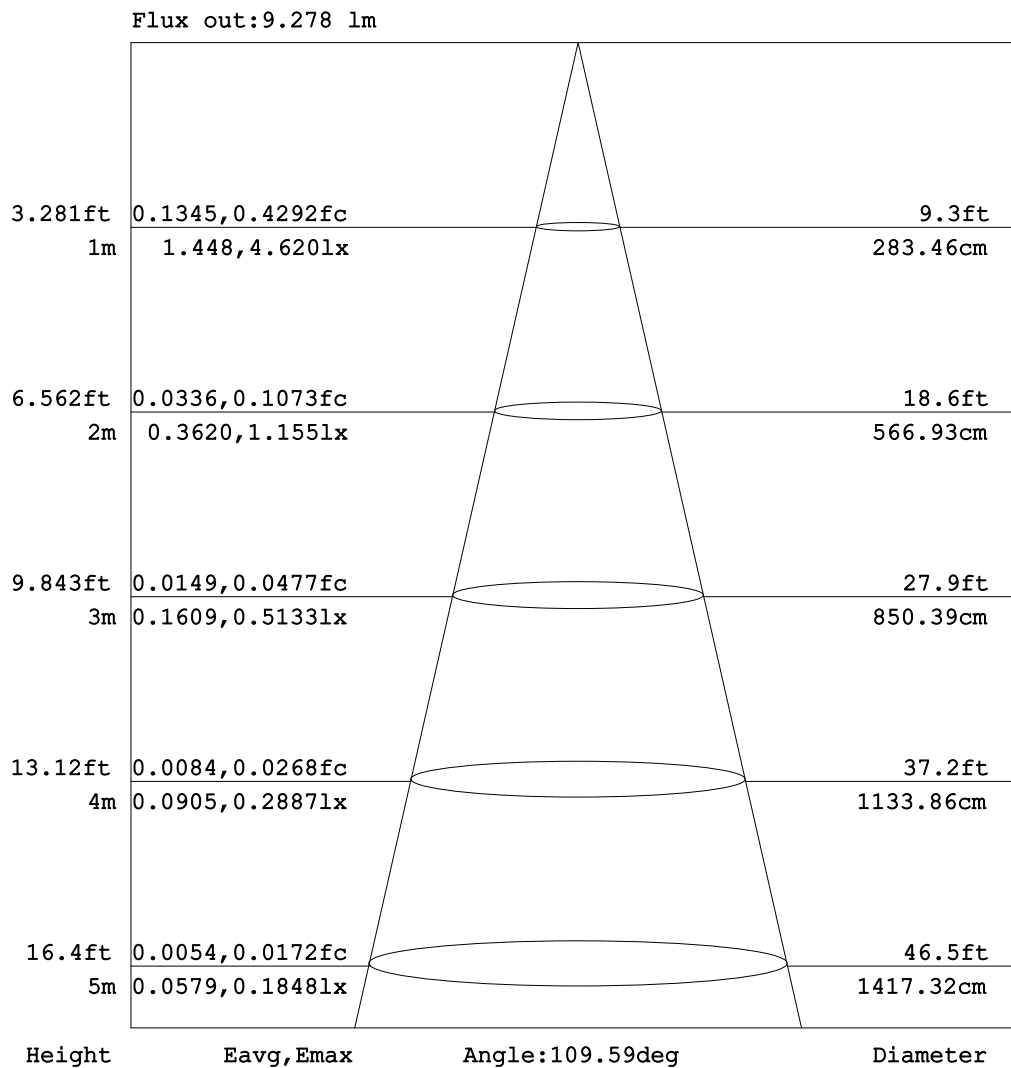


C Range: 0 - 360DEG
C Interval: 30.0DEG
Test Speed: HIGH
Temperature:25.3DEG
Operators:WFW
Test Date:2023-03-03

γ Range: 0 - 180DEG
 γ Interval: 1.0DEG
Test System:EVERFINE GO-2000B_V1 SYSTEM V2.0.269
Humidity:65.0%
Test Distance:10.800m [K=1.0000]
Remarks:

AAI Figure

Test:U:24.00V I:0.1643A P:3.943W PF:1.000 Lamp Flux:12.8669x1 lm		
NAME: SF15-24V-5050-60-W12-RGB-B	TYPE: 硅胶	WEIGHT:
DIM.: 21MM*11.5MM	SPEC.:	SERIAL No.:202303002
MFR.: OLYMPIA	SUR.:1.0*0.0115	PROTECTION ANGLE:



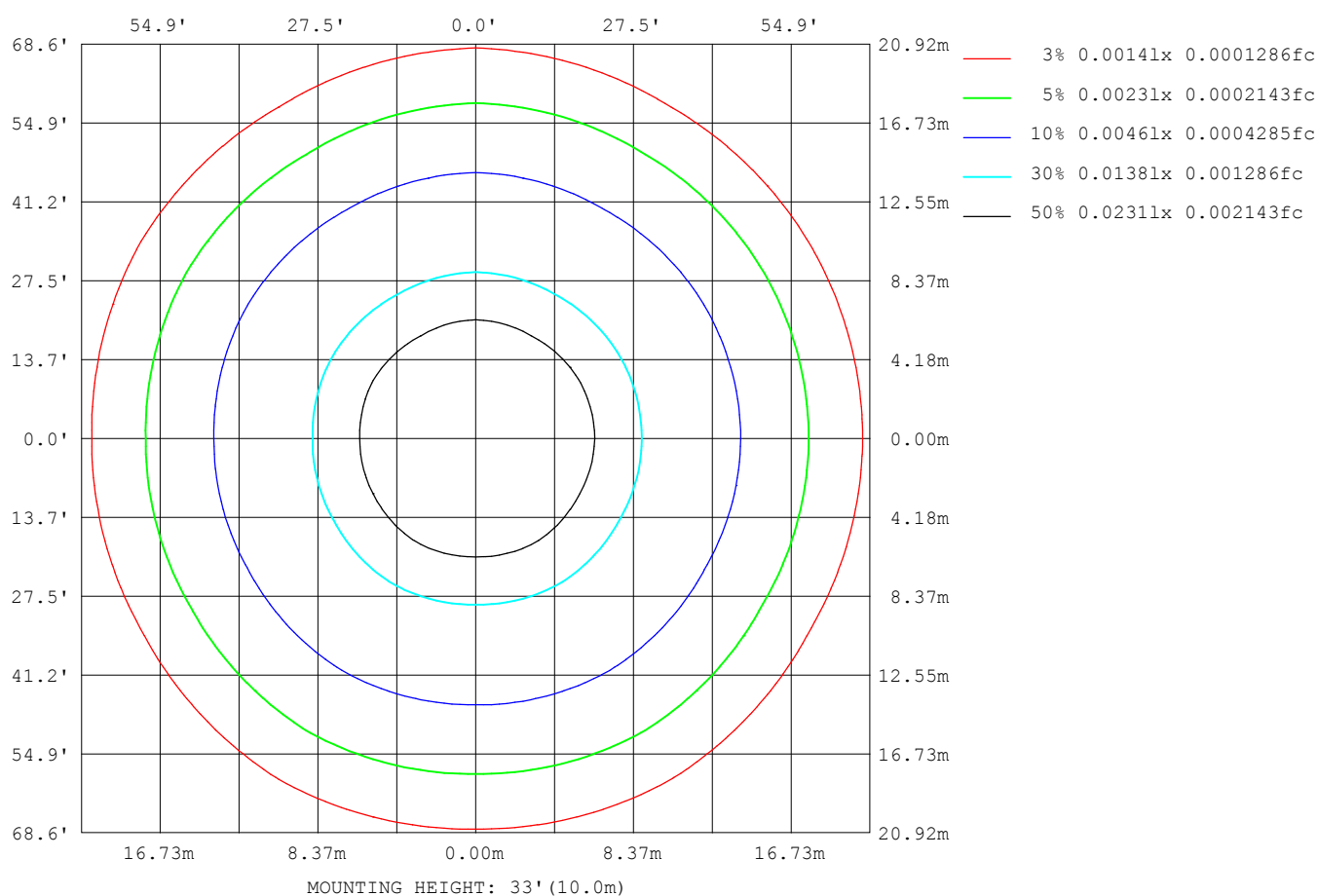
Note:The Curves indicate the illuminated area and the average illumination when the luminaire is at different distance.

C Range: 0 - 360DEG
C Interval: 30.0DEG
Test Speed: HIGH
Temperature:25.3DEG
Operators:WFW
Test Date:2023-03-03

γ Range: 0 - 180DEG
γ Interval: 1.0DEG
Test System:EVERFINE GO-2000B_V1 SYSTEM V2.0.269
Humidity:65.0%
Test Distance:10.800m [K=1.0000]
Remarks:

ISOLUX DIAGRAM

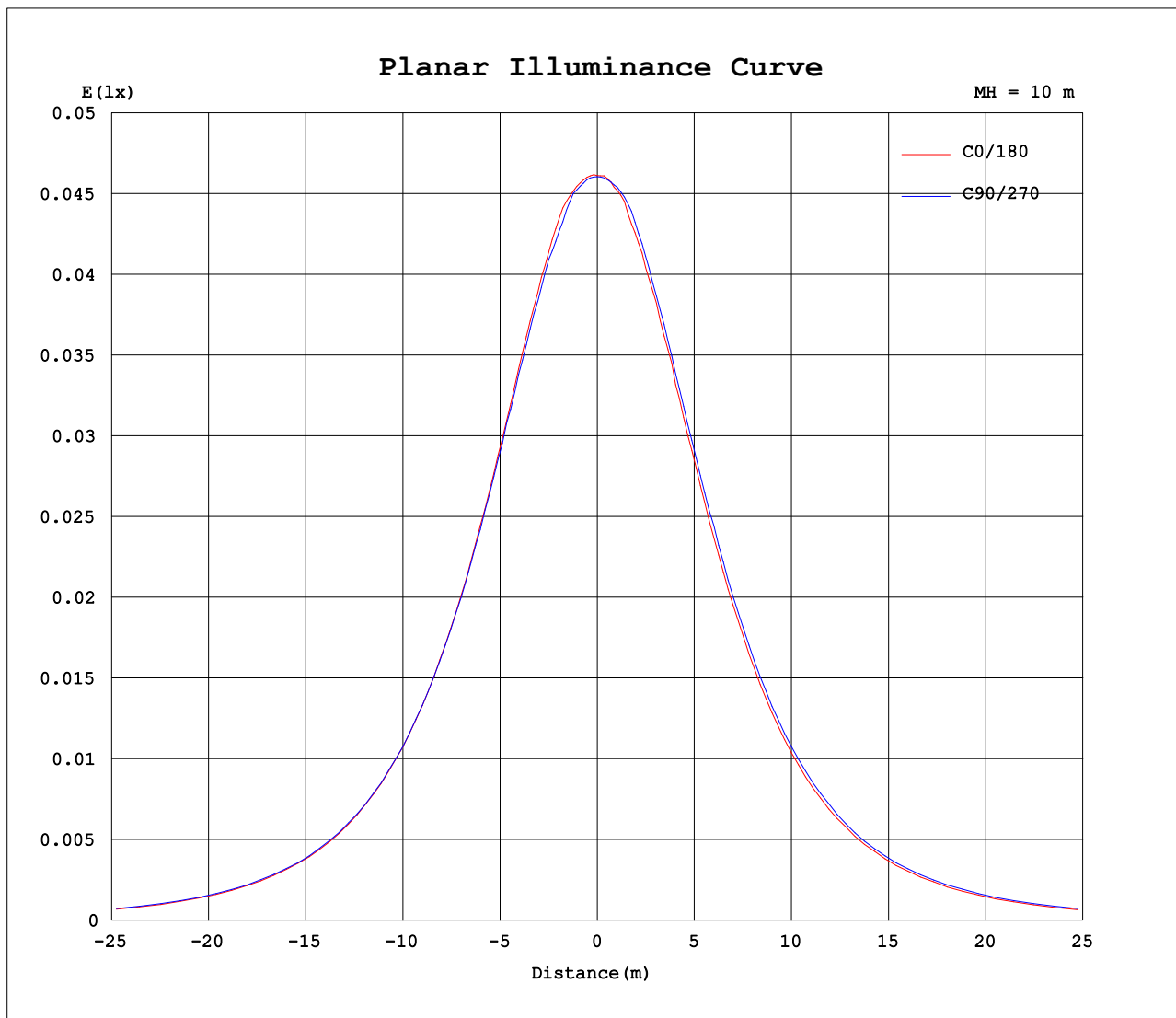
Test:U:24.00V I:0.1643A P:3.943W PF:1.000 Lamp Flux:12.8669x1 lm		
NAME: SF15-24V-5050-60-W12-RGB-B	TYPE: 硅胶	WEIGHT:
DIM.: 21MM*11.5MM	SPEC.:	SERIAL No.:202303002
MFR.: OLYMPIA	SUR.:1.0*0.0115	PROTECTION ANGLE:



C Range: 0 - 360DEG
C Interval: 30.0DEG
Test Speed: HIGH
Temperature:25.3DEG
Operators:WFW
Test Date:2023-03-03

γ Range: 0 - 180DEG
 γ Interval: 1.0DEG
Test System:EVERFINE GO-2000B_V1 SYSTEM V2.0.269
Humidity:65.0%
Test Distance:10.800m [K=1.0000]
Remarks:

Planar Illuminance Curve



C Range: 0 - 360DEG
C Interval: 30.0DEG
Test Speed: HIGH
Temperature: 25.3DEG
Operators: WFW
Test Date: 2023-03-03

γ Range: 0 - 180DEG
 γ Interval: 1.0DEG
Test System: EVERFINE GO-2000B_V1 SYSTEM V2.0.269
Humidity: 65.0%
Test Distance: 10.800m [K=1.0000]
Remarks:

LUMINOUS DISTRIBUTION INTENSITY DATA

Test:U:24.00V I:0.1643A P:3.943W PF:1.000 Lamp Flux:12.8669x1 lm		
NAME: SF15-24V-5050-60-W12-RGB-B	TYPE: 硅胶	WEIGHT:
DIM.: 21MM*11.5MM	SPEC.:	SERIAL No.:202303002
MFR.: OLYMPIA	SUR.:1.0*0.0115	PROTECTION ANGLE:

Table--1

UNIT: cd

C (DEG) γ (DEG)	0	30	60	90	120	150	180	210	240	270	300	330						
0	4.61	4.62	4.61	4.61	4.61	4.61	4.61	4.62	4.61	4.61	4.61	4.61						
5	4.62	4.60	4.61	4.60	4.61	4.61	4.59	4.62	4.60	4.61	4.59	4.61						
10	4.62	4.54	4.62	4.53	4.61	4.51	4.52	4.59	4.52	4.60	4.52	4.59						
15	4.50	4.46	4.52	4.45	4.50	4.40	4.40	4.47	4.42	4.48	4.40	4.49						
20	4.36	4.29	4.37	4.29	4.35	4.26	4.26	4.31	4.26	4.32	4.27	4.34						
25	4.16	4.11	4.19	4.13	4.17	4.05	4.04	4.11	4.04	4.13	4.06	4.13						
30	3.93	3.88	3.96	3.91	3.95	3.83	3.81	3.88	3.82	3.91	3.84	3.91						
35	3.66	3.62	3.71	3.64	3.69	3.58	3.55	3.62	3.57	3.65	3.57	3.65						
40	3.37	3.34	3.42	3.37	3.41	3.28	3.25	3.32	3.29	3.36	3.29	3.35						
45	3.04	3.01	3.11	3.05	3.10	2.96	2.94	3.01	2.96	3.05	2.97	3.03						
50	2.71	2.67	2.76	2.71	2.76	2.63	2.60	2.67	2.62	2.72	2.63	2.69						
55	2.33	2.31	2.41	2.37	2.41	2.28	2.26	2.32	2.27	2.36	2.27	2.33						
60	1.97	1.94	2.06	2.02	2.05	1.94	1.92	1.97	1.92	2.00	1.92	1.95						
65	1.57	1.54	1.66	1.63	1.67	1.55	1.53	1.59	1.54	1.62	1.53	1.57						
70	1.16	1.15	1.27	1.25	1.28	1.16	1.14	1.21	1.18	1.24	1.14	1.16						
75	0.78	0.74	0.87	0.84	0.89	0.77	0.74	0.81	0.79	0.86	0.75	0.78						
80	0.42	0.37	0.49	0.48	0.51	0.38	0.37	0.44	0.41	0.49	0.38	0.41						
85	0.13	0.07	0.17	0.14	0.18	0.06	0.04	0.13	0.08	0.20	0.06	0.12						
90	0.00	0.00	0.02	0.00	0.02	0.00	0.00	0.00	0.00	0.06	0.00	0.00						
95	0.00	0.00	0.01	0.00	0.01	0.00	0.00	0.00	0.00	0.05	0.00	0.00						
100	0.00	0.00	0.01	0.00	0.00	0.00	0.00	0.00	0.00	0.05	0.00	0.00						
105	0.00	0.00	0.01	0.00	0.00	0.00	0.00	0.00	0.00	0.03	0.00	0.00						
110	0.00	0.00	0.01	0.00	0.00	0.00	0.00	0.00	0.00	0.01	0.00	0.00						
115	0.00	0.00	0.01	0.00	0.00	0.00	0.00	0.00	0.00	0.01	0.00	0.00						
120	0.00	0.00	0.01	0.00	0.00	0.00	0.00	0.00	0.00	0.01	0.00	0.00						
125	0.00	0.00	0.01	0.00	0.00	0.00	0.00	0.00	0.00	0.01	0.00	0.00						
130	0.00	0.00	0.01	0.00	0.00	0.00	0.00	0.00	0.00	0.01	0.00	0.00						
135	0.00	0.00	0.01	0.00	0.00	0.01	0.00	0.00	0.00	0.01	0.00	0.00						
140	0.00	0.00	0.00	0.00	0.00	0.01	0.00	0.00	0.00	0.01	0.00	0.00						
145	0.00	0.00	0.00	0.00	0.00	0.01	0.00	0.00	0.00	0.01	0.00	0.00						
150	0.00	0.00	0.00	0.00	0.00	0.01	0.00	0.00	0.00	0.01	0.00	0.00						
155	0.00	0.00	0.00	0.00	0.00	0.01	0.00	0.00	0.00	0.01	0.00	0.00						
160	0.00	0.00	0.00	0.00	0.00	0.01	0.00	0.00	0.00	0.01	0.00	0.00						
165	0.00	0.00	0.00	0.00	0.00	0.01	0.00	0.00	0.00	0.01	0.00	0.00						
170	0.00	0.00	0.00	0.00	0.00	0.01	0.00	0.00	0.00	0.01	0.00	0.00						
175	0.00	0.00	0.00	0.00	0.00	0.01	0.00	0.00	0.00	0.01	0.00	0.00						
180	0.00	0.00	0.00	0.00	0.00	0.00	0.00	0.00	0.00	0.01	0.00	0.00						

C Range: 0 - 360DEG
C Interval: 30.0DEG
Test Speed: HIGH
Temperature:25.3DEG
Operators:WFW
Test Date:2023-03-03

γ Range: 0 - 180DEG
γ Interval: 1.0DEG
Test System:EVERFINE GO-2000B_V1 SYSTEM V2.0.269
Humidity:65.0%
Test Distance:10.800m [K=1.0000]
Remarks:

Photometric Data Table [cd]

G/C	0.0	30.0	60.0	90.0	120.0	150.0	180.0	210.0	240.0	270.0
0.0	4.613	4.620	4.613	4.606	4.606	4.606	4.613	4.620	4.613	4.606
3.0	4.620	4.613	4.613	4.606	4.606	4.606	4.613	4.620	4.599	4.606
6.0	4.620	4.599	4.613	4.599	4.606	4.606	4.592	4.620	4.592	4.613
9.0	4.620	4.605	4.613	4.564	4.606	4.529	4.543	4.606	4.536	4.606
12.0	4.578	4.502	4.578	4.495	4.564	4.481	4.481	4.550	4.488	4.544
15.0	4.502	4.460	4.516	4.453	4.502	4.405	4.405	4.467	4.418	4.481
18.0	4.419	4.370	4.433	4.370	4.412	4.321	4.314	4.371	4.307	4.391
21.0	4.322	4.266	4.343	4.266	4.315	4.211	4.238	4.274	4.204	4.294
24.0	4.198	4.141	4.218	4.155	4.204	4.100	4.086	4.149	4.093	4.177
27.0	4.073	4.037	4.108	4.037	4.087	3.982	3.961	4.024	3.968	4.045
30.0	3.928	3.878	3.962	3.913	3.948	3.830	3.809	3.879	3.823	3.907
33.0	3.775	3.733	3.817	3.753	3.803	3.718	3.656	3.727	3.684	3.761
36.0	3.602	3.587	3.651	3.594	3.637	3.518	3.497	3.560	3.511	3.595
39.0	3.436	3.386	3.484	3.421	3.457	3.358	3.317	3.387	3.331	3.415
42.0	3.242	3.213	3.297	3.248	3.284	3.158	3.137	3.200	3.144	3.235
45.0	3.041	3.012	3.110	3.047	3.097	2.964	2.936	3.006	2.957	3.048
48.0	2.840	2.818	2.909	2.853	2.903	2.777	2.735	2.805	2.763	2.847
51.0	2.633	2.603	2.695	2.652	2.695	2.582	2.534	2.598	2.555	2.640
54.0	2.411	2.375	2.487	2.444	2.480	2.354	2.326	2.390	2.347	2.425
57.0	2.196	2.147	2.259	2.223	2.259	2.153	2.105	2.182	2.132	2.210
60.0	1.968	1.939	2.058	2.022	2.051	1.938	1.917	1.974	1.918	2.002
63.0	1.732	1.703	1.822	1.779	1.829	1.703	1.696	1.739	1.703	1.781
66.0	1.490	1.488	1.580	1.551	1.601	1.481	1.453	1.524	1.481	1.552
69.0	1.254	1.225	1.338	1.315	1.365	1.239	1.218	1.282	1.253	1.323
72.0	1.005	0.9828	1.109	1.073	1.130	0.9966	0.9688	1.054	1.044	1.095
75.0	0.7834	0.7406	0.8666	0.8443	0.8875	0.7683	0.7402	0.8111	0.7888	0.8595
78.0	0.5480	0.5189	0.6312	0.6089	0.6589	0.5397	0.5048	0.5825	0.5602	0.6515
81.0	0.3470	0.2974	0.4231	0.3941	0.4371	0.3111	0.2832	0.3676	0.3591	0.4368
84.0	0.1738	0.1241	0.2293	0.2003	0.2432	0.1171	0.0826	0.1668	0.1515	0.2431
87.0	0.0420	0	0.0836	0.0482	0.0905	0	0	0.0350	0.0069	0.1043
90.0	0	0	0.0208	0	0.0209	0	0	0	0	0.0555
93.0	0	0	0.0069	0	0.0139	0	0	0	0	0.0554
96.0	0	0	0.0069	0	0.0070	0	0	0	0	0.0485
99.0	0	0	0.0069	0	0	0	0	0	0	0.0416
102.0	0	0	0.0069	0	0	0	0	0	0	0.0347
105.0	0	0	0.0069	0	0	0	0	0	0	0.0278
108.0	0	0	0.0069	0	0	0	0	0	0	0.0346
111.0	0	0	0.0069	0	0	0	0	0	0	0.0139
114.0	0	0	0.0069	0	0	0	0	0	0	0.0069
117.0	0	0	0.0069	0	0	0	0	0	0	0.0069
120.0	0	0	0.0069	0	0	0	0	0	0	0.0069
123.0	0	0	0.0069	0	0	0	0	0	0	0.0069
126.0	0	0	0.0069	0	0	0	0	0	0	0.0069
129.0	0	0	0.0069	0	0	0	0	0	0	0.0069
132.0	0	0	0.0069	0	0	0.0001	0	0	0	0.0069
135.0	0	0	0.0069	0	0	0.0069	0	0	0	0.0069
138.0	0	0	0.0069	0	0	0.0069	0	0	0	0.0069
141.0	0	0	0	0	0	0.0069	0	0	0	0.0069
144.0	0	0	0	0	0	0.0069	0	0	0	0.0069
147.0	0	0	0	0	0	0.0069	0	0	0	0.0069
150.0	0	0	0	0	0	0.0069	0	0	0	0.0069
153.0	0	0	0	0	0	0.0069	0	0	0	0.0069
156.0	0	0	0	0	0	0.0069	0	0	0	0.0069
159.0	0	0	0	0	0	0.0069	0	0	0	0.0069
162.0	0	0	0	0	0	0.0069	0	0	0	0.0069
165.0	0	0	0	0	0	0.0069	0	0	0	0.0069
168.0	0	0	0	0	0	0.0069	0	0	0	0.0069
171.0	0	0	0	0	0	0.0069	0	0	0	0.0069
174.0	0	0	0	0	0	0.0069	0	0	0	0.0069
177.0	0	0	0	0	0	0.0069	0	0	0	0.0069
180.0	0	0	0	0	0	0	0	0	0	0.0069
G/C	300.0	330.0								
0.0	4.606	4.606								
3.0	4.599	4.606								
6.0	4.585	4.619								
9.0	4.536	4.619								
12.0	4.481	4.557								
15.0	4.404	4.488								
18.0	4.321	4.398								
21.0	4.259	4.294								
24.0	4.106	4.177								
27.0	3.975	4.052								
30.0	3.836	3.907								

C Range: 0 - 360DEG
 C Interval: 30.0DEG
 Test Speed: HIGH
 Temperature: 25.3DEG
 Operators: WFW
 Test Date: 2023-03-03

γ Range: 0 - 180DEG
 γ Interval: 1.0DEG
 Test System: EVERFINE GO-2000B_V1 SYSTEM V2.0.269
 Humidity: 65.0%
 Test Distance: 10.800m [K=1.0000]
 Remarks:

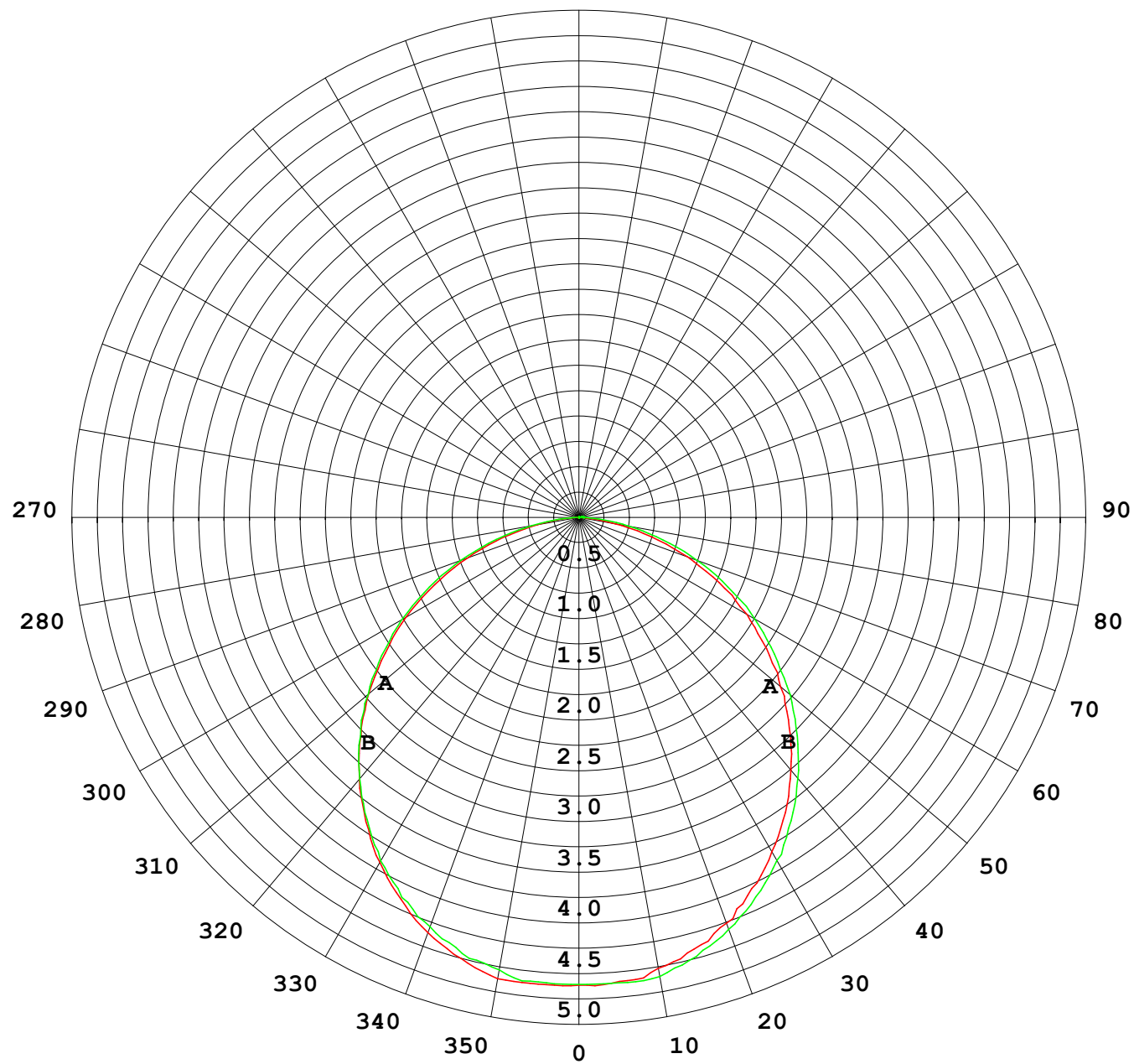
Photometric Data Table [cd]

33.0	3.691	3.761
36.0	3.525	3.588
39.0	3.379	3.415
42.0	3.165	3.228
45.0	2.971	3.034
48.0	2.770	2.819
51.0	2.569	2.612
54.0	2.347	2.397
57.0	2.126	2.182
60.0	1.924	1.954
63.0	1.703	1.718
66.0	1.454	1.483
69.0	1.218	1.247
72.0	0.9757	1.012
75.0	0.7473	0.7763
78.0	0.5186	0.5477
81.0	0.3109	0.3399
84.0	0.1307	0.1598
87.0	0	0.0281
90.0	0	0
93.0	0	0
96.0	0	0
99.0	0	0
102.0	0	0
105.0	0	0
108.0	0	0
111.0	0	0
114.0	0	0
117.0	0	0
120.0	0	0
123.0	0	0
126.0	0	0
129.0	0	0
132.0	0	0
135.0	0	0
138.0	0	0
141.0	0	0
144.0	0	0
147.0	0	0
150.0	0	0
153.0	0	0
156.0	0	0
159.0	0	0
162.0	0	0
165.0	0	0
168.0	0	0
171.0	0	0
174.0	0	0
177.0	0	0
180.0	0	0

C Range: 0 - 360DEG
C Interval: 30.0DEG
Test Speed: HIGH
Temperature:25.3DEG
Operators:WFW
Test Date:2023-03-03

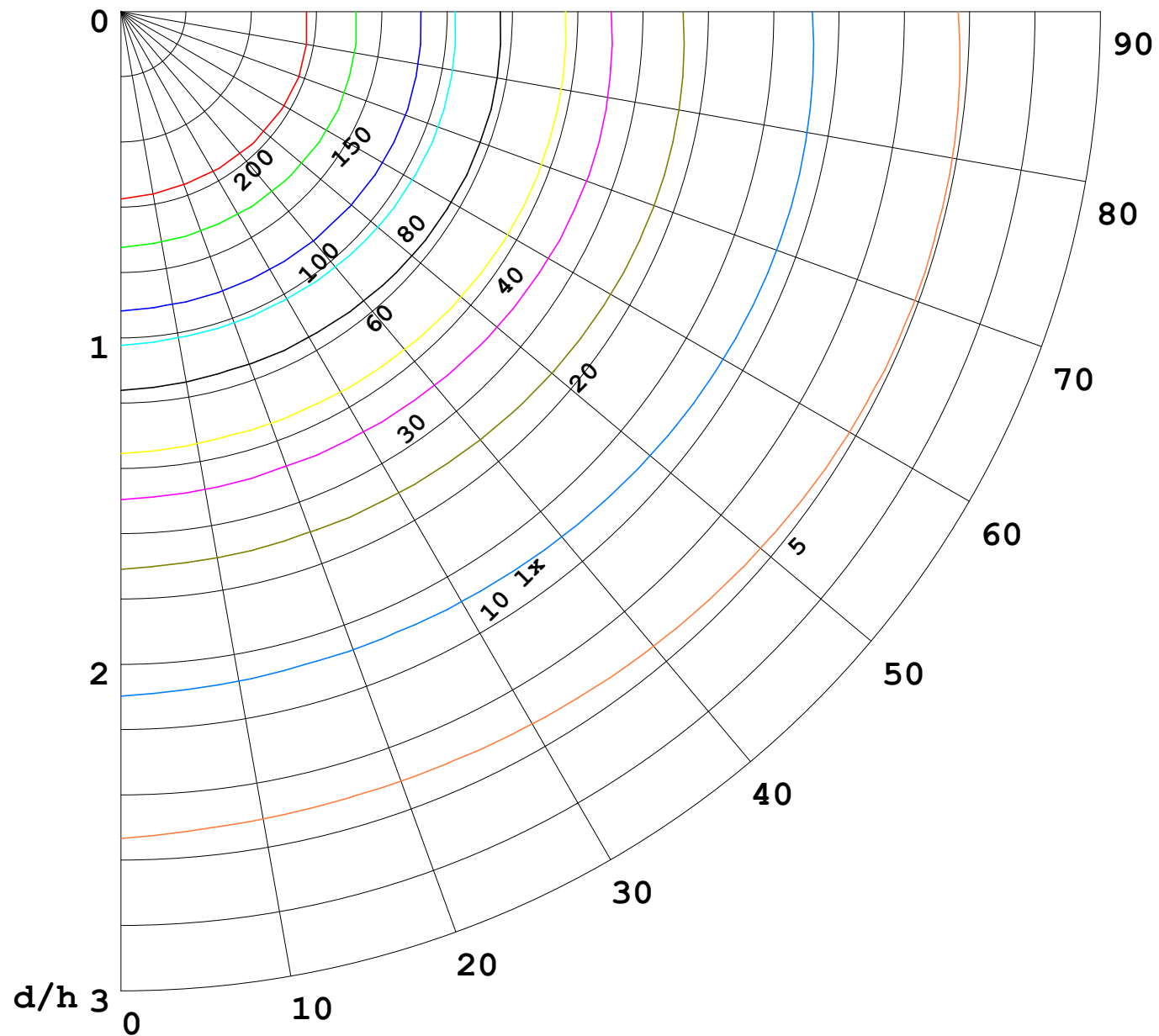
γ Range: 0 - 180DEG
γ Interval: 1.0DEG
Test System:EVERFINE GO-2000B_V1 SYSTEM V2.0.269
Humidity:65.0%
Test Distance:10.800m [K=1.0000]
Remarks:

I (cd)



1000 lm

$\kappa = 1$



F = 5000 lm
 K = 0.7
 Hcc = 0.0 m
 Hfc = 0.0 m
 Eave = 100 lx

	Pcc	Pw	Pfc
—	70	50	30
—	50	30	20

