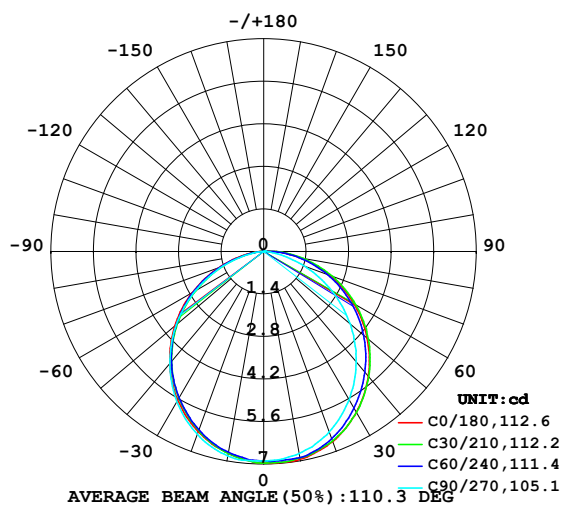


LUMINAIRE PHOTOMETRIC TEST REPORT

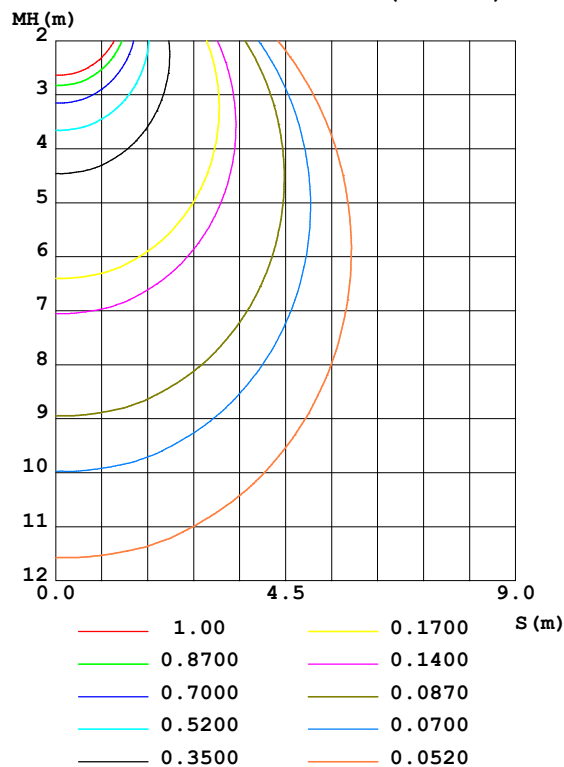
Test:U:48.00V I:0.0876A P:4.205W PF:1.000 Freq:50.00Hz Lamp Flux:19.7393x1 lm		
NAME: SF15-48V-5050-60-RGB-B	TYPE: 硅胶	WEIGHT:
SPEC.:	DIM.: 21mm*11.5mm	SERIAL No.:2021122711
MFR.: OLYMPIA	SUR.:1*0.0115	Shielding Angle:

DATA OF LAMP		PHOTOMETRIC DATA				Eff: 4.69 lm/W
MODEL	5050	I _{max} (cd)	6.976	S/MH(C0/180)	1.22	
NOMINAL POWER(W)	3.3	LOR(%)	100.0	S/MH(C90/270)	1.23	
RATED VOLTAGE(V)	48	TOTAL FLUX(lm)	19.739	η UP,DN(C0-180)	0.5,49.7	
NOMINAL FLUX(lm)	19.7393	CIE CLASS	DIRECT	η UP,DN(C180-360)	0.3,49.4	
LAMPS INSIDE	1	η up(%)	0.8	CIBSE SHR NOM	1.25	
TEST VOLTAGE(V)	48	η down(%)	99.2	CIBSE SHR MAX	1.35	

LUMINOUS INTENSITY DISTRIBUTION DIAGRAM



C0 PLANE ISOLUX DIAGRAM (UNIT:lx)



C Range: 0 - 360DEG
C Interval: 30.0DEG
Test Speed: HIGH
Temperature: 25.3DEG
Operators: LPC
Test Date: 2021-12-27

γ Range: 0 - 120DEG
γ Interval: 1.0DEG
Test System: EVERFINE GO-2000B_V1 SYSTEM V2.0.362
Humidity: 65.0%
Test Distance: 9.200m [K=1.0000]
Remarks:

ZONAL FLUX DIAGRAM

ZONAL FLUX DIAGRAM:

γ	C0	C45	C90	C135	C180	C225	C270	C315	γ	Φ zone	Φ total	%lum, lamp
10	6.946	6.890	6.749	6.679	6.744	6.727	6.830	6.910	0- 10	0.6553	0.6553	3.32,3.32
20	6.654	6.594	6.317	6.169	6.312	6.257	6.398	6.644	10- 20	1.875	2.530	12.8,12.8
30	6.107	6.031	5.628	5.461	5.663	5.576	5.715	6.121	20- 30	2.823	5.354	27.1,27.1
40	5.363	5.282	4.738	4.589	4.809	4.724	4.806	5.423	30- 40	3.380	8.734	44.2,44.2
50	4.449	4.393	3.728	3.598	3.823	3.737	3.760	4.563	40- 50	3.486	12.22	61.9,61.9
60	3.429	3.395	2.592	2.503	2.718	2.628	2.589	3.571	50- 60	3.132	15.35	77.8,77.8
70	2.318	2.327	1.436	1.390	1.572	1.493	1.443	2.478	60- 70	2.376	17.73	89.8,89.8
80	1.222	1.244	0.3962	0.4348	0.5872	0.4874	0.3626	1.367	70- 80	1.380	19.11	96.8,96.8
90	0.3524	0.3041	0.0201	0.0679	0.0402	0.0453	0	0.3619	80- 90	0.4649	19.57	99.2,99.2
100	0.0604	0.0578	0.0201	0.0628	0.0251	0.0302	0	0.0328	90-100	0.0871	19.66	99.6,99.6
110	0.0503	0.0553	0.0402	0.0578	0.0251	0.0302	0	0.0226	100-110	0.0393	19.70	99.8,99.8
120	0.0553	0.0503	0.0503	0.0603	0.0251	0.0327	0	0.0201	110-120	0.0377	19.74	100,100
130	0	0	0	0	0	0	0	0	120-130	0.0018	19.74	100,100
140	0	0	0	0	0	0	0	0	130-140	0	19.74	100,100
150	0	0	0	0	0	0	0	0	140-150	0	19.74	100,100
160	0	0	0	0	0	0	0	0	150-160	0	19.74	100,100
170	0	0	0	0	0	0	0	0	160-170	0	19.74	100,100
180	0	0	0	0	0	0	0	0	170-180	0	19.74	100,100
DEG	LUMINOUS INTENSITY:cd									UNIT:lm		

Conical surface Flux(90deg): 10.493 lm

%lum = 53.2%

%lamp = 53.2%

Conical surface Flux(120deg): 15.353 lm

%lum = 77.8%

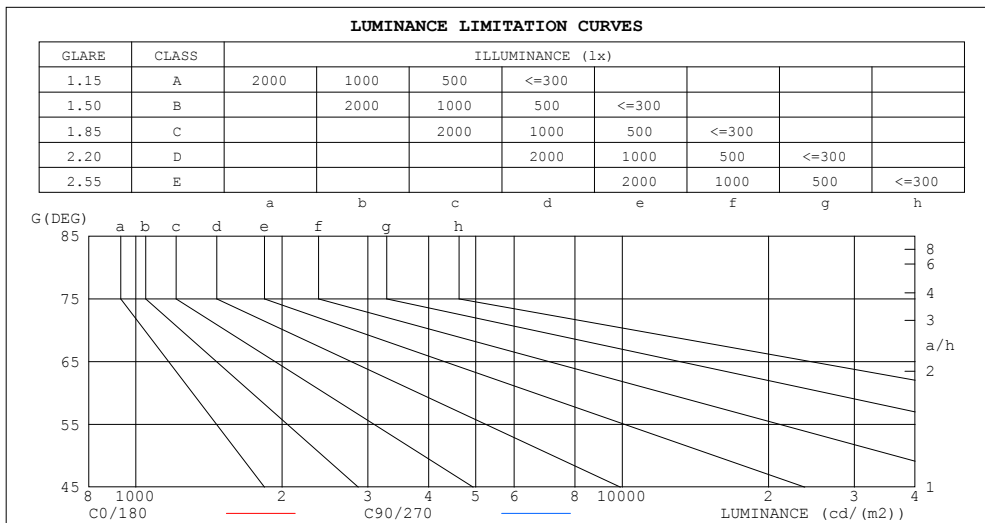
%lamp = 77.8%

C Range: 0 - 360DEG
 C Interval: 30.0DEG
 Test Speed: HIGH
 Temperature:25.3DEG
 Operators:LPC
 Test Date:2021-12-27

γ Range: 0 - 120DEG
 γ Interval: 1.0DEG
 Test System:EVERFINE GO-2000B_V1 SYSTEM V2.0.362
 Humidity:65.0%
 Test Distance:9.200m [K=1.0000]
 Remarks:

LUMINANCE LIMITATION CURVES

Test:U:48.00V I:0.0876A P:4.205W PF:1.000 Freq:50.00Hz Lamp Flux:19.7393x1 lm		
NAME: SF15-48V-5050-60-RGB-B	TYPE: 硅胶	WEIGHT:
SPEC.:	DIM.: 21mm*11.5mm	SERIAL No.:2021122711
MFR.: OLYMPIA	SUR.:1*0.0115	Shielding Angle:



LUMINANCE cd/(m2)		
G (DEG)	C0/180	C90/270
85	718	35
80	612	198
75	591	304
70	589	365
65	593	412
60	596	451
55	599	480
50	602	504
45	606	521

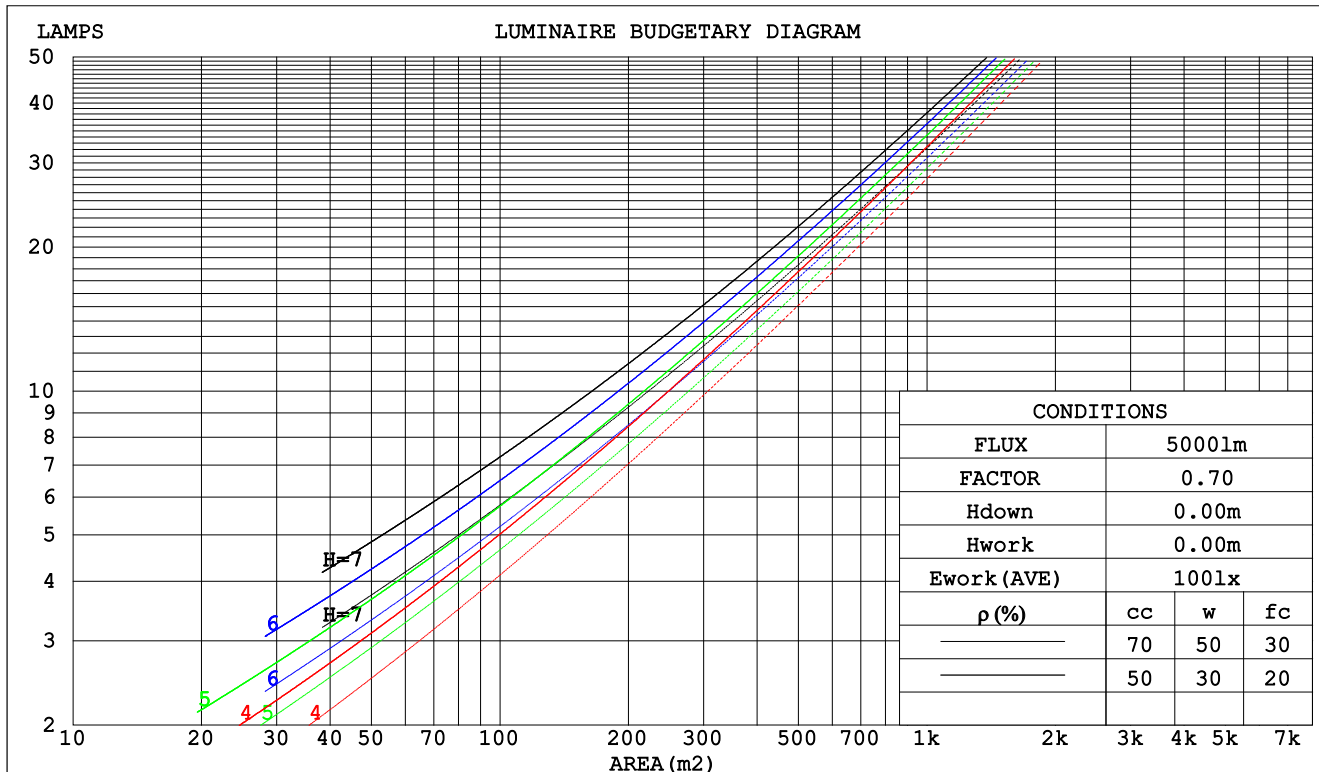
C Range: 0 - 360DEG
C Interval: 30.0DEG
Test Speed: HIGH
Temperature:25.3DEG
Operators:LPC
Test Date:2021-12-27

γ Range: 0 - 120DEG
γ Interval: 1.0DEG
Test System:EVERFINE GO-2000B_V1 SYSTEM V2.0.362
Humidity:65.0%
Test Distance:9.200m [K=1.0000]
Remarks:

CU AND LUMINAIRE BUDGETARY ESTIMATE DIAGRAM

Test:U:48.00V I:0.0876A P:4.205W PF:1.000 Freq:50.00Hz Lamp Flux:19.7393x1 lm		
NAME: SF15-48V-5050-60-RGB-B	TYPE: 硅胶	WEIGHT:
SPEC.:	DIM.: 21mm*11.5mm	SERIAL No.:2021122711
MFR.: OLYMPIA	SUR.:1*0.0115	Shielding Angle:

pcc	80%			70%			50%			30%			10%			0
pw	50%	30%	10%	50%	30%	10%	50%	30%	10%	50%	30%	10%	50%	30%	10%	0
pfc	20%			20%			20%			20%			20%			0
RCR	Coefficients of Utilization(CU)															
	RCR:Room Cavity Ratio															
0.0	1.19	1.19	1.19	1.16	1.16	1.16	1.11	1.11	1.11	1.06	1.06	1.06	1.01	1.01	1.01	.99
1.0	1.03	.99	.95	1.01	.97	.94	.97	.93	.90	.93	.90	.87	.89	.87	.85	.83
2.0	.90	.83	.77	.88	.82	.76	.84	.79	.74	.81	.77	.73	.78	.74	.71	.69
3.0	.79	.71	.64	.77	.70	.64	.74	.68	.62	.71	.66	.61	.69	.64	.60	.58
4.0	.70	.61	.54	.69	.60	.54	.66	.59	.53	.64	.57	.52	.61	.56	.51	.49
5.0	.63	.53	.47	.61	.53	.47	.59	.52	.46	.57	.50	.45	.55	.49	.45	.43
6.0	.56	.47	.41	.55	.47	.41	.53	.46	.40	.52	.45	.40	.50	.44	.39	.37
7.0	.51	.42	.36	.50	.42	.36	.49	.41	.36	.47	.40	.35	.46	.40	.35	.33
8.0	.47	.38	.32	.46	.38	.32	.44	.37	.32	.43	.36	.32	.42	.36	.31	.29
9.0	.43	.35	.29	.42	.34	.29	.41	.34	.29	.40	.33	.28	.39	.33	.28	.26
10.0	.39	.32	.26	.39	.31	.26	.38	.31	.26	.37	.30	.26	.36	.30	.26	.24



C Range: 0 - 360DEG
 C Interval: 30.0DEG
 Test Speed: HIGH
 Temperature:25.3DEG
 Operators:LPC
 Test Date:2021-12-27

γ Range: 0 - 120DEG
 γ Interval: 1.0DEG
 Test System:EVERFINE GO-2000B_V1 SYSTEM V2.0.362
 Humidity:65.0%
 Test Distance:9.200m [K=1.0000]
 Remarks:

WEC AND CCEC

Test:U:48.00V I:0.0876A P:4.205W PF:1.000 Freq:50.00Hz Lamp Flux:19.7393x1 lm		
NAME: SF15-48V-5050-60-RGB-B	TYPE: 硅胶	WEIGHT:
SPEC.:	DIM.: 21mm*11.5mm	SERIAL No.:2021122711
MFR.: OLYMPIA	SUR.:1*0.0115	Shielding Angle:

pcc	80%			70%			50%			30%			10%			0	
pw	50%	30%	10%	50%	30%	10%	50%	30%	10%	50%	30%	10%	50%	30%	10%	0	
pfc	20%			20%			20%			20%			20%			0	
RCR	RCR:Room Cavity Ratio						Wall Exitance Coefficients(WEC)										
0.0																	
1.0	.314	.178	.057	.307	.175	.056	.293	.168	.054	.280	.162	.052	.268	.156	.050		
2.0	.293	.161	.049	.287	.158	.049	.275	.153	.047	.263	.148	.046	.253	.143	.045		
3.0	.271	.144	.043	.265	.142	.043	.254	.138	.042	.244	.134	.041	.235	.130	.040		
4.0	.249	.130	.038	.244	.128	.038	.235	.124	.037	.226	.121	.037	.218	.118	.036		
5.0	.230	.117	.034	.226	.116	.034	.217	.113	.033	.209	.110	.033	.202	.108	.032		
6.0	.214	.107	.031	.210	.106	.030	.202	.103	.030	.195	.101	.030	.188	.099	.029		
7.0	.199	.098	.028	.195	.097	.028	.188	.095	.027	.182	.093	.027	.176	.091	.027		
8.0	.185	.091	.025	.182	.090	.025	.176	.088	.025	.170	.086	.025	.165	.085	.025		
9.0	.174	.084	.023	.171	.083	.023	.165	.082	.023	.160	.080	.023	.155	.079	.023		
10.0	.163	.078	.022	.161	.078	.022	.156	.076	.022	.151	.075	.021	.147	.074	.021		

pcc	80%			70%			50%			30%			10%			0
pw	50%	30%	10%	50%	30%	10%	50%	30%	10%	50%	30%	10%	50%	30%	10%	0
pfc	20%			20%			20%			20%			20%			0
RCR	RCR:Room Cavity Ratio						Ceiling Cavity Exitance Coefficients(CCEC)									
0.0	.197	.197	.197	.168	.168	.168	.115	.115	.115	.066	.066	.066	.021	.021	.021	
1.0	.187	.163	.140	.160	.140	.121	.109	.096	.084	.063	.056	.049	.020	.018	.016	
2.0	.179	.138	.104	.153	.119	.090	.105	.082	.063	.061	.048	.037	.019	.016	.012	
3.0	.171	.121	.081	.147	.104	.070	.101	.072	.049	.058	.042	.029	.019	.014	.009	
4.0	.163	.108	.065	.140	.093	.056	.096	.065	.040	.056	.038	.023	.018	.012	.008	
5.0	.156	.097	.054	.134	.084	.047	.092	.059	.033	.053	.034	.020	.017	.011	.006	
6.0	.149	.089	.046	.128	.077	.040	.088	.054	.028	.051	.032	.017	.017	.010	.006	
7.0	.142	.082	.040	.122	.071	.035	.084	.050	.025	.049	.029	.015	.016	.010	.005	
8.0	.136	.076	.035	.117	.066	.031	.081	.046	.022	.047	.027	.013	.015	.009	.004	
9.0	.129	.071	.032	.111	.062	.028	.077	.043	.020	.045	.026	.012	.015	.008	.004	
10.0	.124	.067	.029	.107	.058	.025	.074	.041	.018	.043	.024	.011	.014	.008	.004	

C Range: 0 - 360DEG
C Interval: 30.0DEG
Test Speed: HIGH
Temperature:25.3DEG
Operators:LPC
Test Date:2021-12-27

γ Range: 0 - 120DEG
γ Interval: 1.0DEG
Test System:EVERFINE GO-2000B_V1 SYSTEM V2.0.362
Humidity:65.0%
Test Distance:9.200m [K=1.0000]
Remarks:

UGR(Unified Glare Rating) Table

Test:U:48.00V I:0.0876A P:4.205W PF:1.000 Freq:50.00Hz Lamp Flux:19.7393x1 lm											
NAME: SF15-48V-5050-60-RGB-B					TYPE:硅胶			WEIGHT:			
SPEC.:					DIM.: 21mm*11.5mm			SERIAL No.:2021122711			
MFR.: OLYMPIA					SUR.:1*0.0115			Shielding Angle:			
ceiling/cavity	0.7	0.7	0.5	0.5	0.3	0.7	0.7	0.5	0.5	0.3	
walls	0.5	0.3	0.5	0.3	0.3	0.5	0.3	0.5	0.3	0.3	
working plane	0.2	0.2	0.2	0.2	0.2	0.2	0.2	0.2	0.2	0.2	
Room dimensions		Viewed crosswise					Viewed endwise				
x = 2H y = 2H	25.2	26.7	25.4	26.9	27.1	24.3	25.8	24.6	26.1	26.3	
	3H	26.9	28.3	27.2	28.6	28.8	25.6	27.0	26.0	27.3	27.5
	4H	27.7	29.0	28.0	29.3	29.6	26.1	27.4	26.4	27.7	28.0
	6H	28.4	29.7	28.7	29.9	30.2	26.3	27.6	26.7	27.9	28.2
	8H	28.7	29.9	29.0	30.2	30.5	26.3	27.6	26.7	27.9	28.2
	12H	28.9	30.1	29.3	30.4	30.7	26.3	27.5	26.7	27.8	28.1
4H	2H	25.8	27.1	26.1	27.4	27.7	25.2	26.5	25.5	26.8	27.1
	3H	27.8	29.0	28.2	29.3	29.6	26.8	28.0	27.2	28.3	28.6
	4H	28.8	29.8	29.2	30.2	30.5	27.5	28.6	27.9	28.9	29.2
	6H	29.6	30.6	30.0	30.9	31.3	27.9	28.8	28.3	29.2	29.6
	8H	30.0	30.9	30.4	31.2	31.6	28.0	28.9	28.4	29.2	29.6
	12H	30.3	31.1	30.8	31.5	31.9	28.0	28.8	28.4	29.2	29.6
8H	4H	29.1	30.0	29.5	30.4	30.8	28.0	28.9	28.5	29.3	29.7
	6H	30.2	30.9	30.6	31.3	31.8	28.7	29.5	29.2	29.9	30.3
	8H	30.7	31.3	31.2	31.8	32.3	29.0	29.6	29.4	30.1	30.5
	12H	31.2	31.7	31.7	32.2	32.7	29.1	29.7	29.6	30.1	30.6
12H	4H	29.1	30.0	29.6	30.4	30.8	28.1	28.9	28.6	29.3	29.8
	6H	30.3	30.9	30.8	31.4	31.9	28.9	29.6	29.4	30.0	30.5
	8H	30.9	31.4	31.4	31.9	32.4	29.3	29.8	29.8	30.3	30.8
Variations with the observer position at spacings:											
S = 1.0H	+ 0.1 / - 0.2					+ 0.2 / - 0.2					
1.5H	+ 0.2 / - 0.3					+ 0.3 / - 0.4					
2.0H	+ 0.1 / - 0.3					+ 0.2 / - 0.6					

CIE Pub.117, 19.74 lm Total Lamp Luminous Flux Correct (8log(F/F0) = -13.6)

C Range: 0 - 360DEG
C Interval: 30.0DEG
Test Speed: HIGH
Temperature:25.3DEG
Operators:LPC
Test Date:2021-12-27

γ Range: 0 - 120DEG
γ Interval: 1.0DEG
Test System:EVERFINE GO-2000B_V1 SYSTEM V2.0.362
Humidity:65.0%
Test Distance:9.200m [K=1.0000]
Remarks:

UTILIZATION FACTORS TABLE

Test:U:48.00V I:0.0876A P:4.205W PF:1.000 Freq:50.00Hz Lamp Flux:19.7393x1 lm		
NAME: SF15-48V-5050-60-RGB-B	TYPE:硅胶	WEIGHT:
SPEC.:	DIM.: 21mm*11.5mm	SERIAL No.:2021122711
MFR.: OLYMPIA	SUR.:1*0.0115	Shielding Angle:

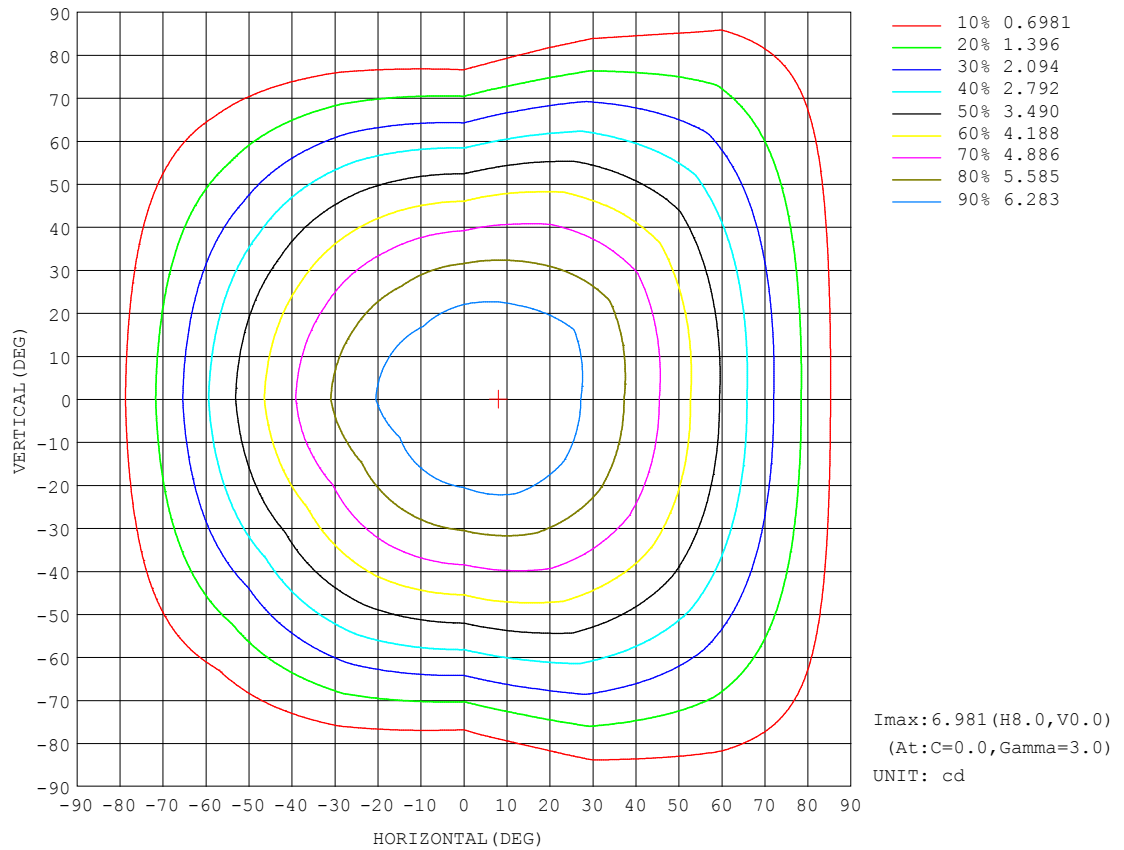
REFLECTANCE										
Ceiling	0.8	0.8	0.8	0.7	0.7	0.7	0.5	0.5	0.5	0
Walls	0.7	0.5	0.3	0.7	0.5	0.3	0.7	0.5	0.3	0
Working plane	0.2	0.2	0.2	0.2	0.2	0.2	0.2	0.2	0.2	0
ROOM INDEX	UTILIZATION FACTORS (PERCENT) $k(RI) \times RCR = 5$									
$k = 0.60$	57	46	39	56	45	39	55	45	38	32
0.80	67	56	48	66	55	48	64	54	48	41
1.00	76	64	57	74	64	57	72	65	56	49
1.25	83	72	65	81	71	64	78	70	64	56
1.50	88	78	71	86	77	70	83	75	69	61
2.00	94	86	79	93	85	78	89	82	77	69
2.50	98	91	84	96	89	83	92	86	81	73
3.00	102	95	89	100	93	88	95	90	86	77
4.00	106	100	95	103	98	94	99	95	91	82
5.00	108	103	99	106	101	97	101	97	94	85
ROOM INDEX	UF(total)									Direct
According to DIN EN 13032-2 2004			Suspended					SHRNOM = 1.25		

C Range: 0 - 360DEG
 C Interval: 30.0DEG
 Test Speed: HIGH
 Temperature:25.3DEG
 Operators:LPC
 Test Date:2021-12-27

γ Range: 0 - 120DEG
 γ Interval: 1.0DEG
 Test System:EVERFINE GO-2000B_V1 SYSTEM V2.0.362
 Humidity:65.0%
 Test Distance:9.200m [K=1.0000]
 Remarks:

ISOCANDELA DIAGRAM

Test:U:48.00V I:0.0876A P:4.205W PF:1.000 Freq:50.00Hz Lamp Flux:19.7393x1 lm		
NAME: SF15-48V-5050-60-RGB-B	TYPE: 硅胶	WEIGHT:
SPEC.:	DIM.: 21mm*11.5mm	SERIAL No.:2021122711
MFR.: OLYMPIA	SUR.:1*0.0115	Shielding Angle:

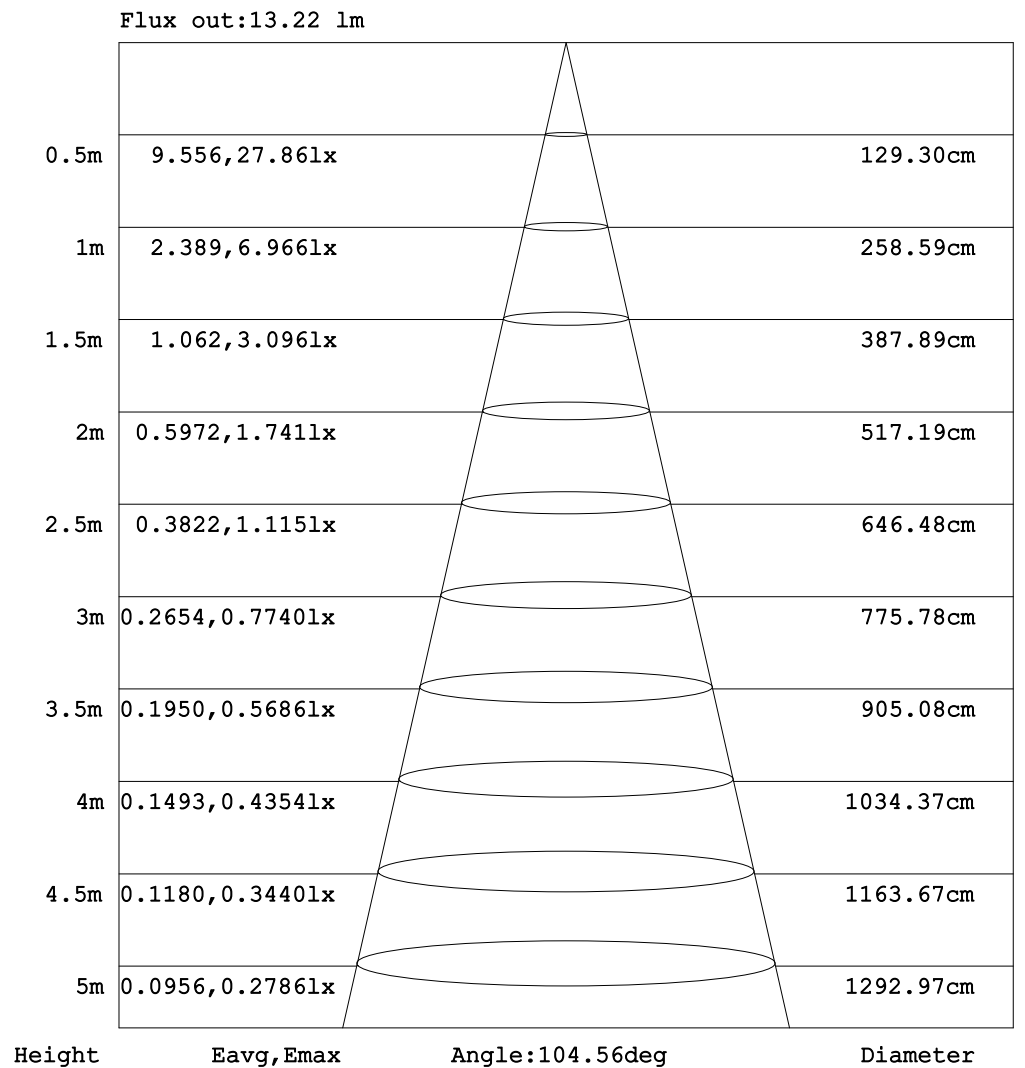


C Range: 0 - 360DEG
C Interval: 30.0DEG
Test Speed: HIGH
Temperature:25.3DEG
Operators:LPC
Test Date:2021-12-27

γ Range: 0 - 120DEG
 γ Interval: 1.0DEG
Test System:EVERFINE GO-2000B_V1 SYSTEM V2.0.362
Humidity:65.0%
Test Distance:9.200m [K=1.0000]
Remarks:

AAI Figure

Test:U:48.00V I:0.0876A P:4.205W PF:1.000 Freq:50.00Hz Lamp Flux:19.7393x1 lm		
NAME: SF15-48V-5050-60-RGB-B	TYPE: 硅胶	WEIGHT:
SPEC.:	DIM.: 21mm*11.5mm	SERIAL No.:2021122711
MFR.: OLYMPIA	SUR.:1*0.0115	Shielding Angle:



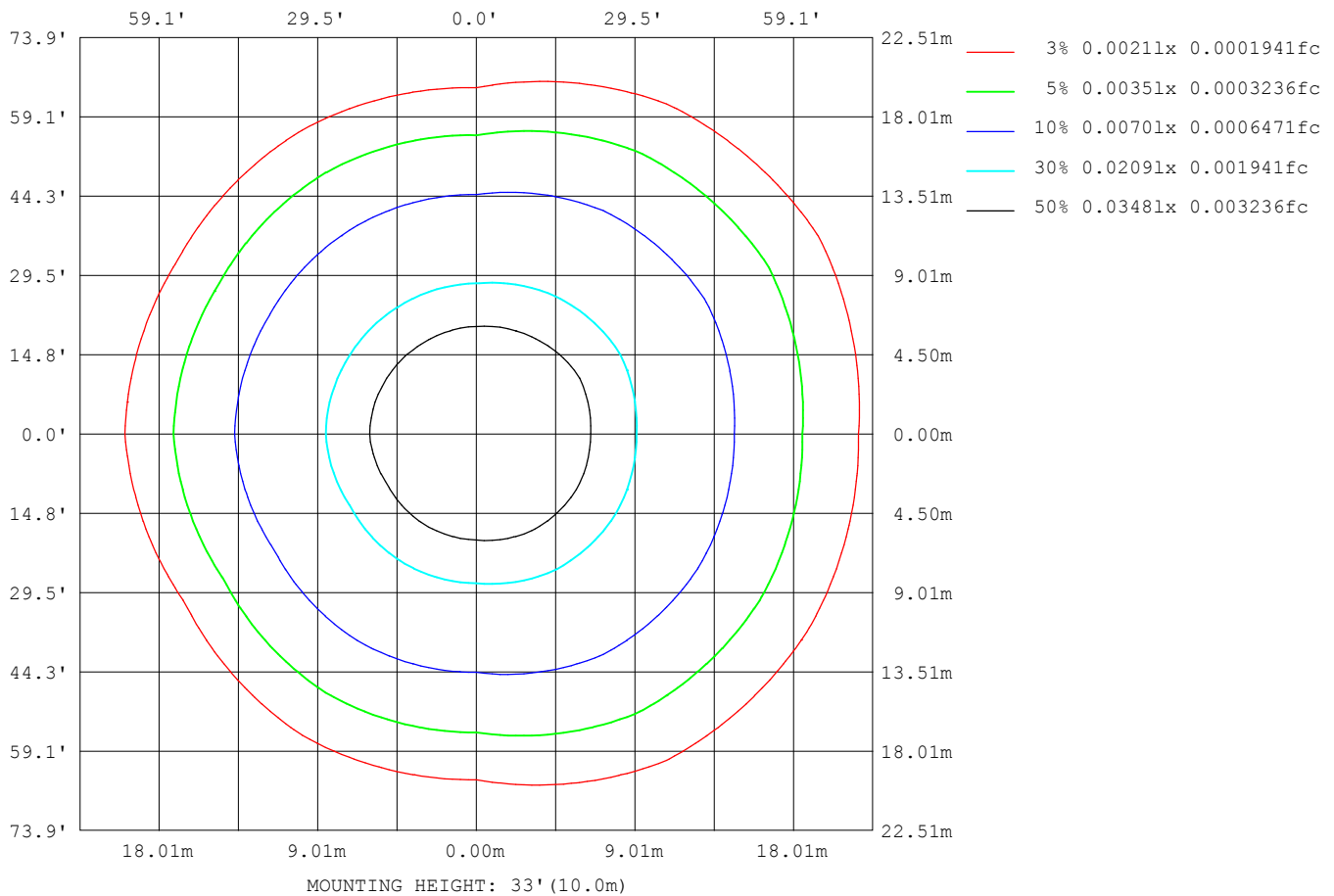
Note: The Curves indicate the illuminated area and the average illumination when the luminaire is at different distance.

C Range: 0 - 360DEG
 C Interval: 30.0DEG
 Test Speed: HIGH
 Temperature: 25.3DEG
 Operators: LPC
 Test Date: 2021-12-27

γ Range: 0 - 120DEG
 γ Interval: 1.0DEG
 Test System: EVERFINE GO-2000B_V1 SYSTEM V2.0.362
 Humidity: 65.0%
 Test Distance: 9.200m [K=1.0000]
 Remarks:

ISOLUX DIAGRAM

Test:U:48.00V I:0.0876A P:4.205W PF:1.000 Freq:50.00Hz Lamp Flux:19.7393x1 lm		
NAME: SF15-48V-5050-60-RGB-B	TYPE: 硅胶	WEIGHT:
SPEC.:	DIM.: 21mm*11.5mm	SERIAL No.:2021122711
MFR.: OLYMPIA	SUR.:1*0.0115	Shielding Angle:



C Range: 0 - 360DEG
C Interval: 30.0DEG
Test Speed: HIGH
Temperature:25.3DEG
Operators:LPC
Test Date:2021-12-27

γ Range: 0 - 120DEG
 γ Interval: 1.0DEG
Test System:EVERFINE GO-2000B_V1 SYSTEM V2.0.362
Humidity:65.0%
Test Distance:9.200m [K=1.0000]
Remarks:

LED Avg.L Report

Test:U:48.00V I:0.0876A P:4.205W PF:1.000 Freq:50.00Hz Lamp Flux:19.7393x1 lm		
NAME: SF15-48V-5050-60-RGB-B	TYPE:硅胶	WEIGHT:
SPEC.:	DIM.: 21mm*11.5mm	SERIAL No.:2021122711
MFR.: OLYMPIA	SUR.:1*0.0115	Shielding Angle:

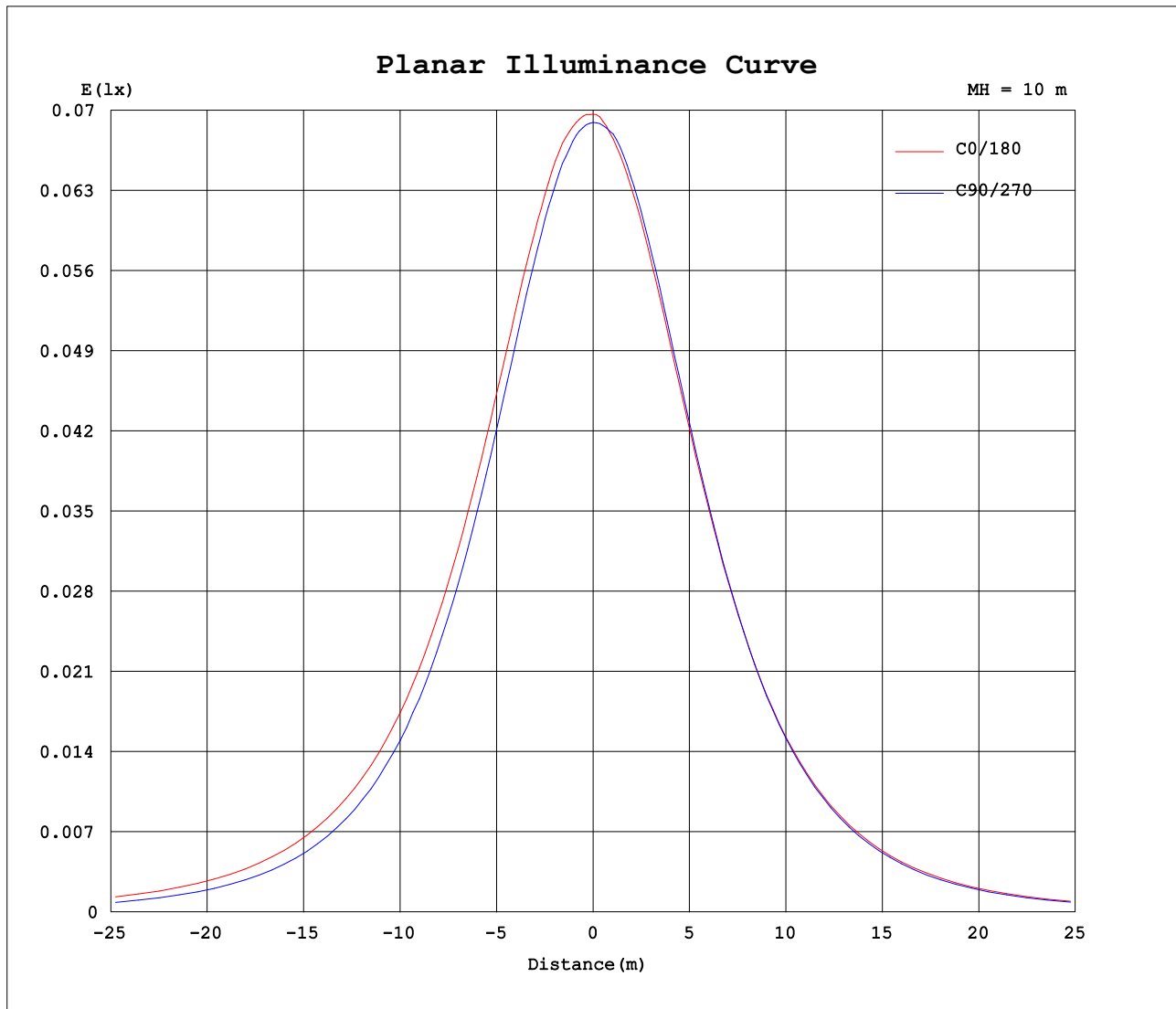
AvgL	cd/m2
L_0~180 (65) av	517
L_0~180 (75) av	472
L_0~180 (85) av	479
L_90~270 (65) av	412
L_90~270 (75) av	298
L_90~270 (85) av	25
L_45 (65) av	514
L_45 (75) av	474
L_45 (85) av	493

Standard: GB/T 29293-2012

C Range: 0 - 360DEG
C Interval: 30.0DEG
Test Speed: HIGH
Temperature:25.3DEG
Operators:LPC
Test Date:2021-12-27

γ Range: 0 - 120DEG
γ Interval: 1.0DEG
Test System:EVERFINE GO-2000B_V1 SYSTEM V2.0.362
Humidity:65.0%
Test Distance:9.200m [K=1.0000]
Remarks:

Planar Illuminance Curve



C Range: 0 - 360DEG
C Interval: 30.0DEG
Test Speed: HIGH
Temperature: 25.3DEG
Operators: LPC
Test Date: 2021-12-27

γ Range: 0 - 120DEG
 γ Interval: 1.0DEG
Test System: EVERFINE GO-2000B_V1 SYSTEM V2.0.362
Humidity: 65.0%
Test Distance: 9.200m [K=1.0000]
Remarks:

LUMINOUS DISTRIBUTION INTENSITY DATA

Test:U:48.00V I:0.0876A P:4.205W PF:1.000 Freq:50.00Hz Lamp Flux:19.7393x1 lm		
NAME: SF15-48V-5050-60-RGB-B	TYPE: 硅胶	WEIGHT:
SPEC.:	DIM.: 21mm*11.5mm	SERIAL No.:2021122711
MFR.: OLYMPIA	SUR.:1*0.0115	Shielding Angle:

Table--1

UNIT: cd

C (DEG) γ (DEG)	0	30	60	90	120	150	180	210	240	270	300	330						
0	6.97	6.96	6.90	6.90	6.91	6.91	6.97	6.96	6.90	6.90	6.91	6.91						
5	6.97	6.96	6.90	6.86	6.86	6.79	6.88	6.89	6.84	6.90	6.91	6.95						
10	6.95	6.90	6.88	6.75	6.72	6.63	6.74	6.74	6.71	6.83	6.88	6.94						
15	6.82	6.79	6.76	6.57	6.51	6.40	6.56	6.54	6.51	6.65	6.74	6.90						
20	6.65	6.63	6.55	6.32	6.22	6.12	6.31	6.27	6.24	6.40	6.55	6.74						
25	6.40	6.41	6.28	6.00	5.89	5.77	6.01	5.95	5.92	6.09	6.28	6.53						
30	6.11	6.11	5.95	5.63	5.52	5.40	5.66	5.58	5.57	5.72	5.96	6.28						
35	5.76	5.76	5.58	5.21	5.12	4.96	5.26	5.18	5.17	5.28	5.61	5.96						
40	5.36	5.38	5.18	4.74	4.67	4.51	4.81	4.72	4.73	4.81	5.25	5.59						
45	4.93	4.95	4.76	4.24	4.19	4.02	4.32	4.23	4.26	4.30	4.85	5.19						
50	4.45	4.50	4.29	3.73	3.70	3.50	3.82	3.72	3.76	3.76	4.39	4.74						
55	3.95	4.01	3.81	3.17	3.17	2.94	3.29	3.16	3.23	3.19	3.91	4.25						
60	3.43	3.50	3.29	2.59	2.62	2.38	2.72	2.57	2.68	2.59	3.40	3.74						
65	2.88	2.96	2.77	2.00	2.06	1.81	2.14	2.00	2.10	2.00	2.85	3.21						
70	2.32	2.42	2.23	1.44	1.51	1.27	1.57	1.45	1.53	1.44	2.30	2.66						
75	1.76	1.85	1.69	0.90	0.98	0.76	1.05	0.93	0.98	0.87	1.74	2.09						
80	1.22	1.32	1.17	0.40	0.50	0.37	0.59	0.49	0.48	0.36	1.19	1.54						
85	0.72	0.79	0.67	0.04	0.18	0.12	0.24	0.20	0.13	0.02	0.66	1.00						
90	0.35	0.35	0.26	0.02	0.08	0.06	0.04	0.07	0.03	0.00	0.22	0.51						
95	0.15	0.12	0.09	0.02	0.08	0.06	0.02	0.04	0.03	0.00	0.02	0.21						
100	0.06	0.06	0.06	0.02	0.07	0.06	0.03	0.04	0.03	0.00	0.02	0.05						
105	0.05	0.06	0.05	0.04	0.06	0.06	0.03	0.03	0.03	0.00	0.02	0.03						
110	0.05	0.06	0.05	0.04	0.06	0.06	0.03	0.03	0.03	0.00	0.02	0.03						
115	0.06	0.06	0.05	0.05	0.06	0.06	0.03	0.03	0.03	0.00	0.01	0.03						
120	0.06	0.05	0.05	0.05	0.06	0.06	0.03	0.04	0.03	0.00	0.01	0.03						
125	0.00	0.00	0.00	0.00	0.00	0.00	0.00	0.00	0.00	0.00	0.00	0.00						
130	0.00	0.00	0.00	0.00	0.00	0.00	0.00	0.00	0.00	0.00	0.00	0.00						
135	0.00	0.00	0.00	0.00	0.00	0.00	0.00	0.00	0.00	0.00	0.00	0.00						
140	0.00	0.00	0.00	0.00	0.00	0.00	0.00	0.00	0.00	0.00	0.00	0.00						
145	0.00	0.00	0.00	0.00	0.00	0.00	0.00	0.00	0.00	0.00	0.00	0.00						
150	0.00	0.00	0.00	0.00	0.00	0.00	0.00	0.00	0.00	0.00	0.00	0.00						
155	0.00	0.00	0.00	0.00	0.00	0.00	0.00	0.00	0.00	0.00	0.00	0.00						
160	0.00	0.00	0.00	0.00	0.00	0.00	0.00	0.00	0.00	0.00	0.00	0.00						
165	0.00	0.00	0.00	0.00	0.00	0.00	0.00	0.00	0.00	0.00	0.00	0.00						
170	0.00	0.00	0.00	0.00	0.00	0.00	0.00	0.00	0.00	0.00	0.00	0.00						
175	0.00	0.00	0.00	0.00	0.00	0.00	0.00	0.00	0.00	0.00	0.00	0.00						
180	0.00	0.00	0.00	0.00	0.00	0.00	0.00	0.00	0.00	0.00	0.00	0.00						

C Range: 0 - 360DEG
C Interval: 30.0DEG
Test Speed: HIGH
Temperature:25.3DEG
Operators:LPC
Test Date:2021-12-27

γ Range: 0 - 120DEG
γ Interval: 1.0DEG
Test System:EVERFINE GO-2000B_V1 SYSTEM V2.0.362
Humidity:65.0%
Test Distance:9.200m [K=1.0000]
Remarks:

Photometric Data Table [cd]

G/C	0.0	30.0	60.0	90.0	120.0	150.0	180.0	210.0	240.0	270.0
0.0	6.966	6.961	6.900	6.895	6.910	6.905	6.966	6.961	6.900	6.895
3.0	6.976	6.961	6.910	6.875	6.900	6.850	6.930	6.931	6.880	6.895
6.0	6.971	6.961	6.899	6.840	6.835	6.769	6.860	6.865	6.815	6.905
9.0	6.966	6.915	6.888	6.784	6.745	6.669	6.779	6.775	6.739	6.855
12.0	6.911	6.885	6.855	6.679	6.644	6.553	6.674	6.675	6.644	6.770
15.0	6.820	6.789	6.760	6.568	6.509	6.397	6.563	6.544	6.513	6.654
18.0	6.730	6.704	6.650	6.427	6.343	6.241	6.417	6.393	6.367	6.519
21.0	6.609	6.593	6.504	6.257	6.162	6.065	6.251	6.212	6.186	6.338
24.0	6.459	6.468	6.343	6.070	5.961	5.849	6.070	6.026	5.985	6.157
27.0	6.293	6.292	6.157	5.849	5.750	5.633	5.869	5.805	5.779	5.936
30.0	6.107	6.111	5.951	5.628	5.519	5.402	5.663	5.584	5.568	5.715
33.0	5.906	5.910	5.730	5.377	5.278	5.151	5.427	5.343	5.327	5.459
36.0	5.685	5.693	5.499	5.110	5.027	4.879	5.170	5.087	5.085	5.192
39.0	5.444	5.462	5.263	4.834	4.765	4.608	4.899	4.811	4.814	4.901
42.0	5.192	5.216	5.012	4.538	4.484	4.321	4.618	4.524	4.537	4.600
45.0	4.926	4.950	4.755	4.236	4.192	4.020	4.321	4.233	4.256	4.298
48.0	4.645	4.693	4.479	3.934	3.896	3.718	4.035	3.926	3.969	3.981
51.0	4.353	4.397	4.198	3.602	3.590	3.396	3.718	3.600	3.653	3.645
54.0	4.057	4.105	3.911	3.271	3.273	3.070	3.401	3.273	3.336	3.303
57.0	3.745	3.809	3.609	2.929	2.946	2.718	3.064	2.926	3.009	2.956
60.0	3.429	3.497	3.293	2.592	2.624	2.381	2.718	2.574	2.682	2.589
63.0	3.102	3.170	2.986	2.235	2.288	2.034	2.366	2.233	2.336	2.243
66.0	2.770	2.849	2.665	1.889	1.951	1.693	2.024	1.891	1.989	1.891
69.0	2.434	2.527	2.343	1.537	1.614	1.381	1.682	1.564	1.642	1.554
72.0	2.097	2.185	2.017	1.210	1.298	1.059	1.361	1.242	1.311	1.217
75.0	1.760	1.854	1.695	0.9037	0.9811	0.7631	1.049	0.9307	0.9841	0.8705
78.0	1.444	1.522	1.383	0.5971	0.6745	0.5170	0.7531	0.6441	0.6775	0.5488
81.0	1.122	1.200	1.066	0.3058	0.4229	0.3011	0.5068	0.4178	0.3961	0.2672
84.0	0.8153	0.8885	0.7651	0.0849	0.2269	0.1505	0.3009	0.2367	0.1853	0.0410
87.0	0.5487	0.6023	0.4834	0.0201	0.1109	0.0653	0.1405	0.1159	0.0351	0.0000
90.0	0.3524	0.3512	0.2570	0.0201	0.0755	0.0603	0.0402	0.0654	0.0251	0
93.0	0.2115	0.1955	0.1210	0.0201	0.0754	0.0603	0.0201	0.0453	0.0251	0
96.0	0.1259	0.0852	0.0805	0.0201	0.0754	0.0603	0.0201	0.0352	0.0251	0
99.0	0.0705	0.0553	0.0603	0.0201	0.0653	0.0603	0.0251	0.0352	0.0251	0
102.0	0.0503	0.0553	0.0653	0.0253	0.0653	0.0603	0.0251	0.0302	0.0251	0
105.0	0.0503	0.0553	0.0503	0.0402	0.0553	0.0603	0.0251	0.0302	0.0251	0
108.0	0.0503	0.0603	0.0503	0.0402	0.0553	0.0603	0.0251	0.0302	0.0302	0
111.0	0.0503	0.0603	0.0503	0.0402	0.0553	0.0603	0.0251	0.0302	0.0302	0
114.0	0.0503	0.0603	0.0503	0.0403	0.0553	0.0603	0.0251	0.0302	0.0302	0
117.0	0.0503	0.0603	0.0503	0.0452	0.0603	0.0603	0.0251	0.0401	0.0302	0
120.0	0.0553	0.0503	0.0503	0.0503	0.0603	0.0603	0.0251	0.0352	0.0302	0
G/C	300.0	330.0								
0.0	6.910	6.905								
3.0	6.910	6.950								
6.0	6.910	6.953								
9.0	6.880	6.949								
12.0	6.825	6.935								
15.0	6.739	6.901								
18.0	6.638	6.805								
21.0	6.493	6.700								
24.0	6.337	6.584								
27.0	6.151	6.438								
30.0	5.960	6.283								
33.0	5.744	6.097								
36.0	5.538	5.891								
39.0	5.331	5.675								
42.0	5.095	5.439								
45.0	4.854	5.187								
48.0	4.577	4.921								
51.0	4.296	4.645								
54.0	4.010	4.358								
57.0	3.708	4.057								
60.0	3.401	3.740								
63.0	3.069	3.429								
66.0	2.748	3.097								
69.0	2.411	2.765								
72.0	2.069	2.434								
75.0	1.743	2.092								
78.0	1.406	1.745								
81.0	1.084	1.428								
84.0	0.7628	1.102								
87.0	0.4715	0.7851								
90.0	0.2154	0.5084								

C Range: 0 - 360DEG
 C Interval: 30.0DEG
 Test Speed: HIGH
 Temperature: 25.3DEG
 Operators: LPC
 Test Date: 2021-12-27

γ Range: 0 - 120DEG
 γ Interval: 1.0DEG
 Test System: EVERFINE GO-2000B_V1 SYSTEM V2.0.362
 Humidity: 65.0%
 Test Distance: 9.200m [K=1.0000]
 Remarks:

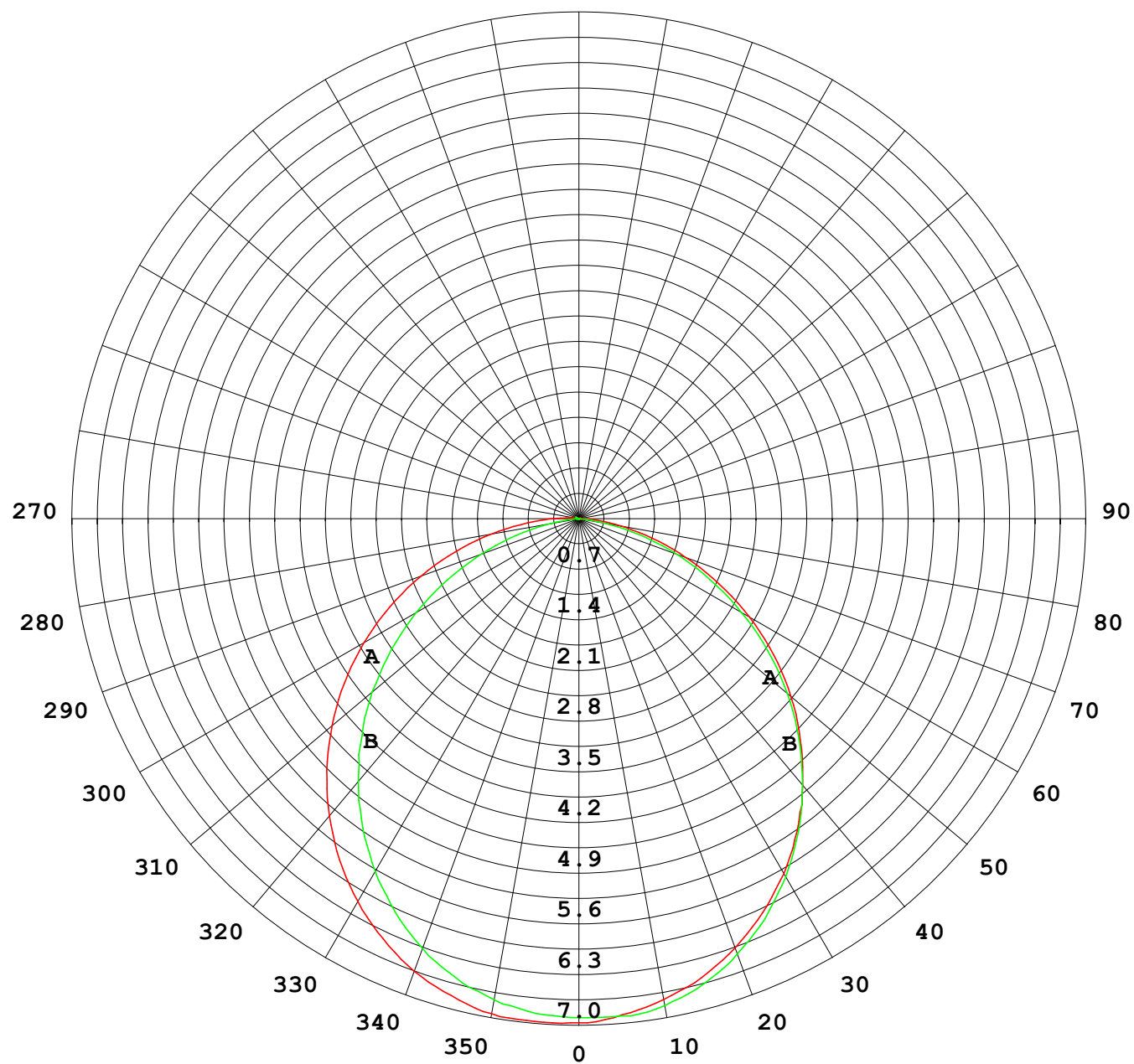
Photometric Data Table [cd]

93.0	0.0651	0.3021
96.0	0.0151	0.1613
99.0	0.0151	0.0757
102.0	0.0151	0.0302
105.0	0.0151	0.0302
108.0	0.0151	0.0302
111.0	0.0151	0.0302
114.0	0.0150	0.0302
117.0	0.0101	0.0302
120.0	0.0101	0.0302

C Range: 0 - 360DEG
C Interval: 30.0DEG
Test Speed: HIGH
Temperature: 25.3DEG
Operators: LPC
Test Date: 2021-12-27

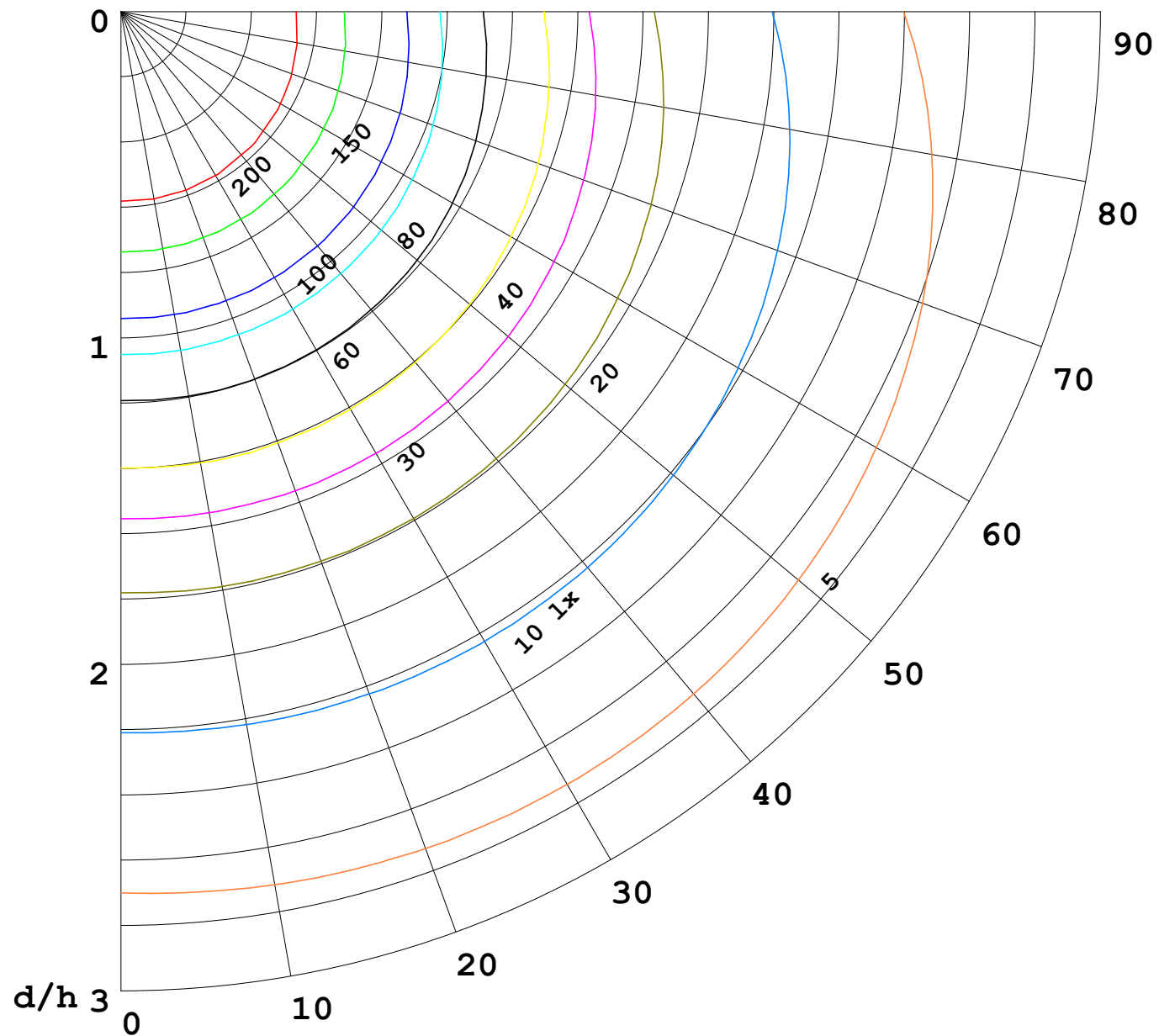
γ Range: 0 - 120DEG
γ Interval: 1.0DEG
Test System: EVERFINE GO-2000B_V1 SYSTEM V2.0.362
Humidity: 65.0%
Test Distance: 9.200m [K=1.0000]
Remarks:

I (cd)



1000 lm

$\kappa = 1$



F = 5000 lm
 K = 0.7
 Hcc = 0.0 m
 Hfc = 0.0 m
 Eave = 100 lx

	Pcc	Pw	Pfc
—	70	50	30
—	50	30	20

