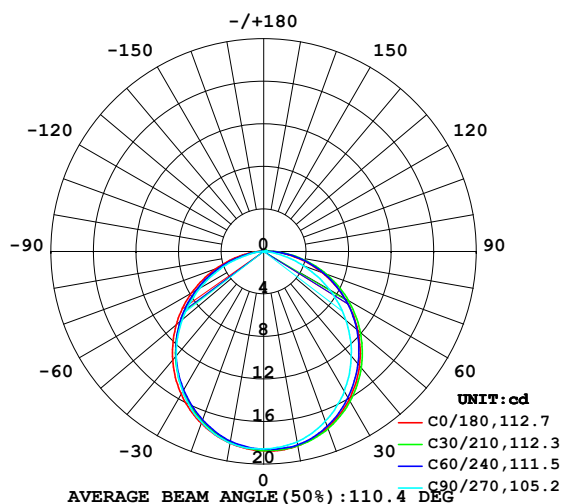


LUMINAIRE PHOTOMETRIC TEST REPORT

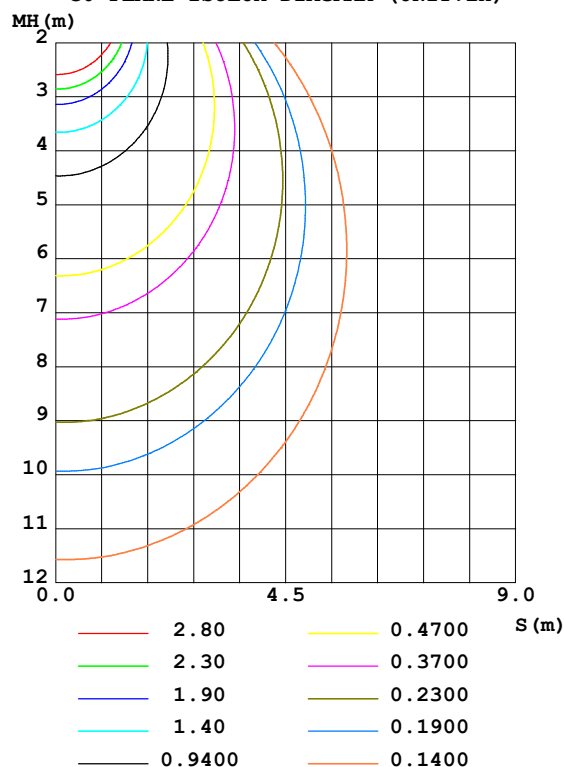
Test:U:48.00V I:0.1161A P:5.573W PF:1.000 Freq:50.00Hz Lamp Flux:53.5579x1 lm		
NAME: SF15-48V-5050-60-RGB-R	TYPE: 硅胶	WEIGHT:
SPEC.:	DIM.: 21mm*11.5mm	SERIAL No.:2021122709
MFR.: OLYMPIA	SUR.:1*0.0115	Shielding Angle:

DATA OF LAMP		PHOTOMETRIC DATA				Eff: 9.61 lm/W
MODEL	5050	I _{max} (cd)	18.77	S/MH (C0/180)	1.24	
NOMINAL POWER (W)	3.3	LOR (%)	100.0	S/MH (C90/270)	1.22	
RATED VOLTAGE (V)	48	TOTAL FLUX (lm)	53.558	η UP, DN (C0-180)	0.7, 48.9	
NOMINAL FLUX (lm)	53.5579	CIE CLASS	DIRECT	η UP, DN (C180-360)	0.6, 49.8	
LAMPS INSIDE	1	η up (%)	1.3	CIBSE SHR NOM	1.25	
TEST VOLTAGE (V)	48	η down (%)	98.7	CIBSE SHR MAX	1.35	

LUMINOUS INTENSITY DISTRIBUTION DIAGRAM



C0 PLANE ISOLUX DIAGRAM (UNIT:lx)



C Range: 0 - 360DEG
C Interval: 30.0DEG
Test Speed: HIGH
Temperature: 25.3DEG
Operators: LPC
Test Date: 2021-12-27

γ Range: 0 - 120DEG
γ Interval: 1.0DEG
Test System: EVERFINE GO-2000B_V1 SYSTEM V2.0.362
Humidity: 65.0%
Test Distance: 9.200m [K=1.0000]
Remarks:

ZONAL FLUX DIAGRAM

ZONAL FLUX DIAGRAM:

γ	C0	C45	C90	C135	C180	C225	C270	C315	γ	Φ zone	Φ total	%lum, lamp
10	18.54	18.51	18.18	17.88	18.29	18.14	18.29	18.58	0- 10	1.762	1.762	3.29,3.29
20	17.61	17.61	16.97	16.53	17.19	16.90	17.08	17.78	10- 20	5.032	6.794	12.7,12.7
30	16.08	16.07	15.17	14.64	15.51	15.09	15.23	16.38	20- 30	7.575	14.37	26.8,26.8
40	14.03	14.04	12.81	12.34	13.33	12.87	12.81	14.53	30- 40	9.074	23.44	43.8,43.8
50	11.56	11.66	10.12	9.667	10.74	10.25	10.01	12.26	40- 50	9.373	32.82	61.3,61.3
60	8.803	8.986	7.128	6.747	7.852	7.315	6.928	9.611	50- 60	8.444	41.26	77,77
70	5.868	6.144	4.058	3.782	4.811	4.257	3.832	6.732	60- 70	6.451	47.71	89.1,89.1
80	2.948	3.247	1.264	1.274	2.028	1.528	0.9973	3.757	70- 80	3.792	51.50	96.2,96.2
90	0.8256	0.8445	0.1632	0.3302	0.3962	0.2512	0.0553	1.103	80- 90	1.346	52.85	98.7,98.7
100	0.2413	0.2715	0.1809	0.2718	0.2110	0.2002	0.0553	0.2132	90-100	0.3492	53.20	99.3,99.3
110	0.1417	0.2400	0.2021	0.2042	0.2111	0.1889	0.0754	0.1372	100-110	0.2068	53.40	99.7,99.7
120	0.0236	0.1446	0.0611	0.0704	0.2111	0.0337	0.1357	0.0283	110-120	0.1479	53.55	100,100
130	0	0	0	0	0	0	0	0	120-130	0.0053	53.56	100,100
140	0	0	0	0	0	0	0	0	130-140	0	53.56	100,100
150	0	0	0	0	0	0	0	0	140-150	0	53.56	100,100
160	0	0	0	0	0	0	0	0	150-160	0	53.56	100,100
170	0	0	0	0	0	0	0	0	160-170	0	53.56	100,100
180	0	0	0	0	0	0	0	0	170-180	0	53.56	100,100
DEG	LUMINOUS INTENSITY:cd									UNIT:lm		

Conical surface Flux(90deg): 28.17 lm

%lum = 52.6%

%lamp = 52.6%

Conical surface Flux(120deg): 41.26 lm

%lum = 77.0%

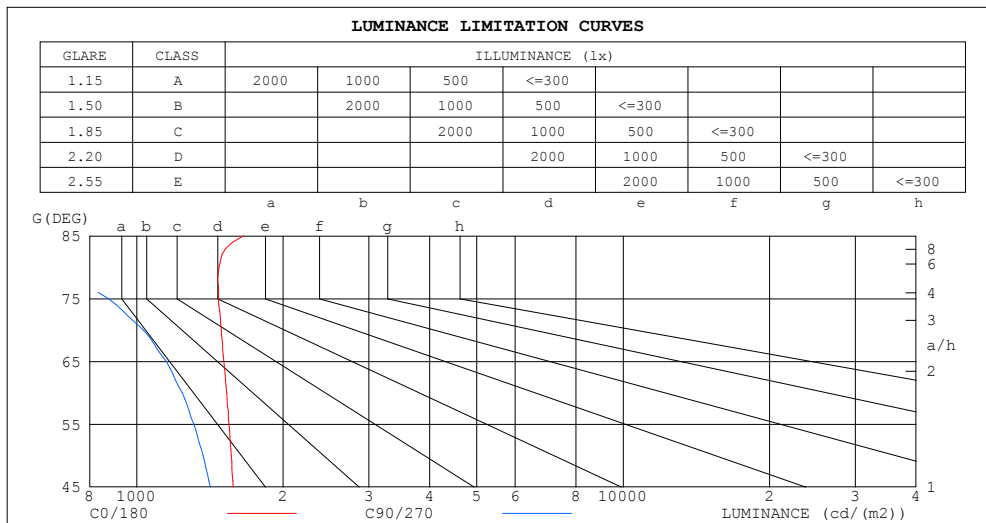
%lamp = 77.0%

C Range: 0 - 360DEG
 C Interval: 30.0DEG
 Test Speed: HIGH
 Temperature:25.3DEG
 Operators:LPC
 Test Date:2021-12-27

γ Range: 0 - 120DEG
 γ Interval: 1.0DEG
 Test System:EVERFINE GO-2000B_V1 SYSTEM V2.0.362
 Humidity:65.0%
 Test Distance:9.200m [K=1.0000]
 Remarks:

LUMINANCE LIMITATION CURVES

Test:U:48.00V I:0.1161A P:5.573W PF:1.000 Freq:50.00Hz Lamp Flux:53.5579x1 lm		
NAME: SF15-48V-5050-60-RGB-R	TYPE: 硅胶	WEIGHT:
SPEC.:	DIM.: 21mm*11.5mm	SERIAL No.:2021122709
MFR.: OLYMPIA	SUR.:1*0.0115	Shielding Angle:



LUMINANCE cd/(m2)		
G (DEG)	C0/180	C90/270
85	1657	225
80	1476	633
75	1472	874
70	1492	1032
65	1510	1149
60	1531	1240
55	1549	1310
50	1564	1370
45	1579	1417

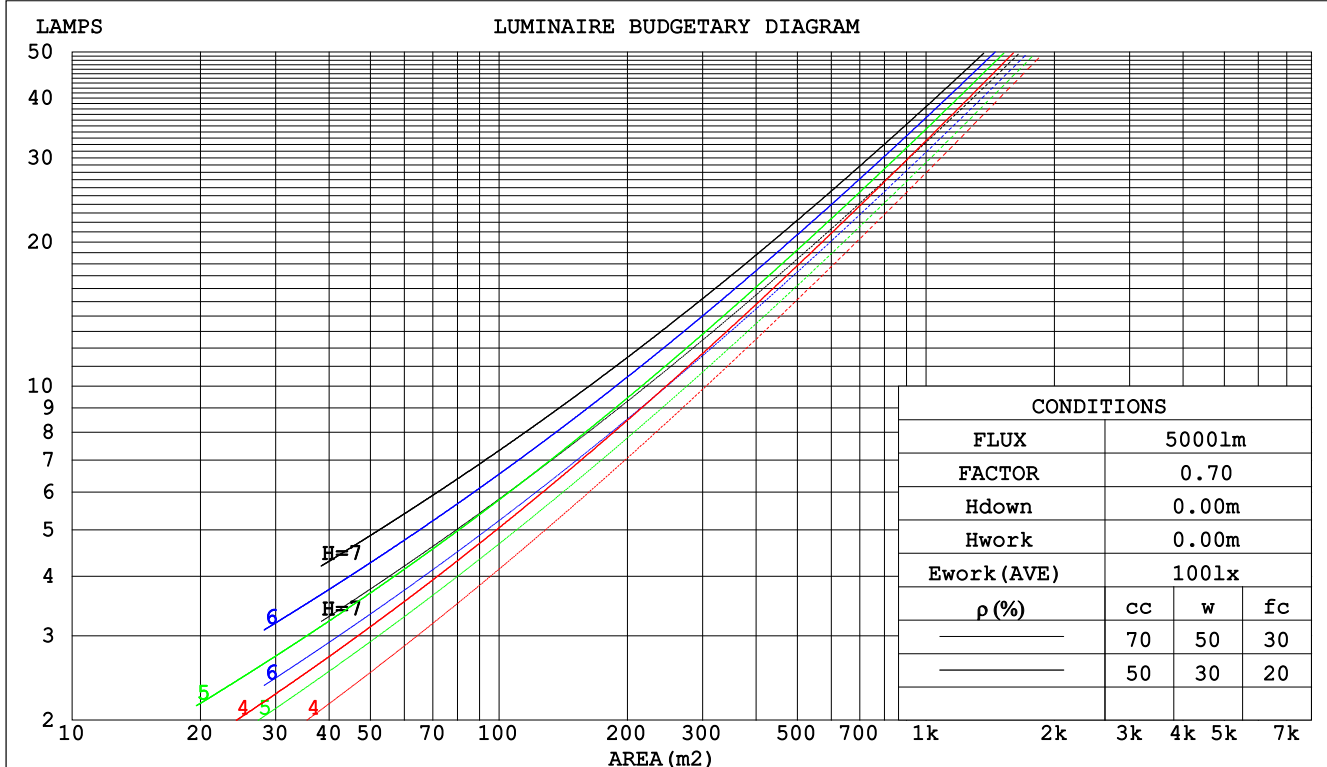
C Range: 0 - 360DEG
C Interval: 30.0DEG
Test Speed: HIGH
Temperature:25.3DEG
Operators:LPC
Test Date:2021-12-27

γ Range: 0 - 120DEG
 γ Interval: 1.0DEG
Test System:EVERFINE GO-2000B_V1 SYSTEM V2.0.362
Humidity:65.0%
Test Distance:9.200m [K=1.0000]
Remarks:

CU AND LUMINAIRE BUDGETARY ESTIMATE DIAGRAM

Test:U:48.00V I:0.1161A P:5.573W PF:1.000 Freq:50.00Hz Lamp Flux:53.5579x1 lm		
NAME: SF15-48V-5050-60-RGB-R	TYPE: 硅胶	WEIGHT:
SPEC.:	DIM.: 21mm*11.5mm	SERIAL No.:2021122709
MFR.: OLYMPIA	SUR.:1*0.0115	Shielding Angle:

pcc	80%			70%			50%			30%			10%			0
pw	50%	30%	10%	50%	30%	10%	50%	30%	10%	50%	30%	10%	50%	30%	10%	0
pfc	20%			20%			20%			20%			20%			0
RCR	RCR:Room Cavity Ratio						Coefficients of Utilization(CU)									
0.0	1.19	1.19	1.19	1.16	1.16	1.16	1.10	1.10	1.10	1.05	1.05	1.05	1.01	1.01	1.01	.99
1.0	1.03	.99	.95	1.01	.97	.93	.96	.93	.90	.92	.89	.87	.88	.86	.84	.82
2.0	.90	.83	.77	.88	.81	.76	.84	.79	.74	.81	.76	.72	.77	.74	.70	.68
3.0	.79	.71	.64	.77	.69	.63	.74	.67	.62	.71	.65	.61	.68	.64	.60	.57
4.0	.70	.61	.54	.68	.60	.54	.66	.58	.53	.63	.57	.52	.61	.55	.51	.49
5.0	.62	.53	.47	.61	.53	.46	.59	.51	.46	.57	.50	.45	.55	.49	.44	.42
6.0	.56	.47	.41	.55	.47	.40	.53	.46	.40	.51	.45	.39	.50	.44	.39	.37
7.0	.51	.42	.36	.50	.42	.36	.48	.41	.35	.47	.40	.35	.45	.39	.35	.33
8.0	.46	.38	.32	.46	.37	.32	.44	.37	.32	.43	.36	.31	.42	.36	.31	.29
9.0	.43	.34	.29	.42	.34	.29	.41	.33	.28	.39	.33	.28	.38	.32	.28	.26
10.0	.39	.31	.26	.39	.31	.26	.38	.31	.26	.37	.30	.26	.36	.30	.25	.24



C Range: 0 - 360DEG
 C Interval: 30.0DEG
 Test Speed: HIGH
 Temperature:25.3DEG
 Operators:LPC
 Test Date:2021-12-27

γ Range: 0 - 120DEG
 γ Interval: 1.0DEG
 Test System:EVERFINE GO-2000B_V1 SYSTEM V2.0.362
 Humidity:65.0%
 Test Distance:9.200m [K=1.0000]
 Remarks:

WEC AND CCEC

Test:U:48.00V I:0.1161A P:5.573W PF:1.000 Freq:50.00Hz Lamp Flux:53.5579x1 lm		
NAME: SF15-48V-5050-60-RGB-R	TYPE: 硅胶	WEIGHT:
SPEC.:	DIM.: 21mm*11.5mm	SERIAL No.:2021122709
MFR.: OLYMPIA	SUR.:1*0.0115	Shielding Angle:

pcc	80%			70%			50%			30%			10%			0
pw	50%	30%	10%	50%	30%	10%	50%	30%	10%	50%	30%	10%	50%	30%	10%	0
pfc	20%			20%			20%			20%			20%			0
RCR	RCR:Room Cavity Ratio						Wall Exitance Coeffcients(WEC)									
0.0																
1.0	.316	.180	.057	.309	.176	.056	.295	.169	.054	.282	.162	.052	.270	.156	.050	
2.0	.295	.161	.050	.288	.159	.049	.276	.153	.048	.264	.148	.046	.253	.143	.045	
3.0	.271	.144	.043	.266	.142	.043	.255	.138	.042	.244	.134	.041	.235	.130	.040	
4.0	.250	.130	.038	.245	.128	.038	.235	.125	.037	.226	.121	.037	.217	.118	.036	
5.0	.231	.118	.034	.226	.116	.034	.217	.113	.033	.209	.110	.033	.202	.108	.032	
6.0	.214	.107	.031	.210	.106	.030	.202	.103	.030	.195	.101	.030	.188	.099	.029	
7.0	.199	.098	.028	.195	.097	.028	.188	.095	.027	.182	.093	.027	.176	.091	.027	
8.0	.186	.091	.026	.182	.090	.025	.176	.088	.025	.170	.086	.025	.165	.085	.025	
9.0	.174	.084	.023	.171	.083	.023	.165	.082	.023	.160	.080	.023	.155	.079	.023	
10.0	.163	.078	.022	.161	.078	.022	.156	.076	.021	.151	.075	.021	.146	.074	.021	

pcc	80%			70%			50%			30%			10%			0
pw	50%	30%	10%	50%	30%	10%	50%	30%	10%	50%	30%	10%	50%	30%	10%	0
pfc	20%			20%			20%			20%			20%			0
RCR	RCR:Room Cavity Ratio						Ceiling Cavity Exitance Coefficients(CCEC)									
0.0	.201	.201	.201	.171	.171	.171	.117	.117	.117	.067	.067	.067	.021	.021	.021	
1.0	.191	.166	.144	.163	.143	.124	.112	.098	.086	.064	.057	.050	.021	.018	.016	
2.0	.183	.142	.108	.157	.122	.093	.107	.085	.065	.062	.049	.038	.020	.016	.012	
3.0	.175	.125	.084	.150	.107	.073	.103	.075	.051	.060	.044	.030	.019	.014	.010	
4.0	.167	.111	.069	.144	.096	.060	.099	.067	.042	.057	.039	.025	.018	.013	.008	
5.0	.160	.101	.057	.137	.087	.050	.095	.061	.035	.055	.036	.021	.018	.012	.007	
6.0	.153	.093	.050	.131	.080	.043	.091	.056	.031	.053	.033	.018	.017	.011	.006	
7.0	.146	.086	.044	.125	.074	.038	.087	.052	.027	.050	.031	.016	.016	.010	.005	
8.0	.139	.080	.039	.120	.069	.034	.083	.049	.024	.048	.029	.014	.016	.009	.005	
9.0	.133	.075	.036	.115	.065	.031	.080	.046	.022	.046	.027	.013	.015	.009	.004	
10.0	.128	.071	.033	.110	.061	.029	.076	.043	.020	.045	.026	.012	.014	.008	.004	

C Range: 0 - 360DEG
 C Interval: 30.0DEG
 Test Speed: HIGH
 Temperature:25.3DEG
 Operators:LPC
 Test Date:2021-12-27

γ Range: 0 - 120DEG
 γ Interval: 1.0DEG
 Test System:EVERFINE GO-2000B_V1 SYSTEM V2.0.362
 Humidity:65.0%
 Test Distance:9.200m [K=1.0000]
 Remarks:

UGR(Unified Glare Rating) Table

Test:U:48.00V I:0.1161A P:5.573W PF:1.000 Freq:50.00Hz Lamp Flux:53.5579x1 lm												
NAME: SF15-48V-5050-60-RGB-R					TYPE:硅胶			WEIGHT:				
SPEC.:					DIM.: 21mm*11.5mm			SERIAL No.:2021122709				
MFR.: OLYMPIA					SUR.:1*0.0115			Shielding Angle:				
ceiling/cavity	0.7	0.7	0.5	0.5	0.3	0.7	0.7	0.5	0.5	0.3		
walls	0.5	0.3	0.5	0.3	0.3	0.5	0.3	0.5	0.3	0.3		
working plane	0.2	0.2	0.2	0.2	0.2	0.2	0.2	0.2	0.2	0.2		
Room dimensions		Viewed crosswise				Viewed endwise						
x = 2H y = 2H	24.9	26.4	25.2	26.6	26.9	24.3	25.8	24.5	26.0	26.2		
	3H	26.6	28.0	26.9	28.2	28.5	25.6	27.0	25.9	27.3	27.5	
	4H	27.3	28.7	27.7	28.9	29.2	26.1	27.4	26.4	27.7	28.0	
	6H	28.0	29.2	28.3	29.5	29.8	26.4	27.6	26.7	27.9	28.2	
	8H	28.2	29.4	28.6	29.7	30.0	26.4	27.6	26.8	27.9	28.3	
	12H	28.4	29.6	28.8	29.9	30.2	26.4	27.6	26.8	27.9	28.2	
	4H	2H	25.6	26.9	25.9	27.2	27.4	25.1	26.4	25.4	26.7	27.0
	3H	27.5	28.7	27.9	29.0	29.3	26.8	27.9	27.1	28.3	28.6	
	4H	28.4	29.5	28.8	29.8	30.2	27.5	28.5	27.8	28.9	29.2	
	6H	29.2	30.1	29.6	30.5	30.9	27.9	28.8	28.3	29.2	29.6	
	8H	29.5	30.4	29.9	30.8	31.2	28.0	28.9	28.4	29.3	29.7	
	12H	29.8	30.6	30.2	31.0	31.4	28.0	28.8	28.5	29.2	29.7	
	8H	4H	28.8	29.7	29.2	30.1	30.5	28.0	28.9	28.4	29.2	29.7
	6H	29.8	30.5	30.3	30.9	31.4	28.7	29.4	29.2	29.9	30.3	
	8H	30.2	30.9	30.7	31.3	31.8	29.0	29.6	29.4	30.1	30.5	
	12H	30.7	31.2	31.2	31.7	32.2	29.1	29.7	29.6	30.1	30.6	
	12H	4H	28.8	29.6	29.3	30.0	30.5	28.0	28.9	28.5	29.3	29.7
	6H	29.9	30.5	30.4	31.0	31.5	28.9	29.5	29.4	30.0	30.5	
	8H	30.4	31.0	30.9	31.5	32.0	29.2	29.8	29.7	30.3	30.8	
Variations with the observer position at spacings:												
S = 1.0H	+ 0.1 / - 0.2					+ 0.2 / - 0.2						
1.5H	+ 0.2 / - 0.3					+ 0.3 / - 0.4						
2.0H	+ 0.1 / - 0.4					+ 0.2 / - 0.5						

CIE Pub.117, 53.56 lm Total Lamp Luminous Flux Correct (8log(F/F0) = -10.2)

C Range: 0 - 360DEG
C Interval: 30.0DEG
Test Speed: HIGH
Temperature:25.3DEG
Operators:LPC
Test Date:2021-12-27

γ Range: 0 - 120DEG
γ Interval: 1.0DEG
Test System:EVERFINE GO-2000B_V1 SYSTEM V2.0.362
Humidity:65.0%
Test Distance:9.200m [K=1.0000]
Remarks:

UTILIZATION FACTORS TABLE

Test:U:48.00V I:0.1161A P:5.573W PF:1.000 Freq:50.00Hz Lamp Flux:53.5579x1 lm		
NAME: SF15-48V-5050-60-RGB-R	TYPE: 硅胶	WEIGHT:
SPEC.:	DIM.: 21mm*11.5mm	SERIAL No.:2021122709
MFR.: OLYMPIA	SUR.:1*0.0115	Shielding Angle:

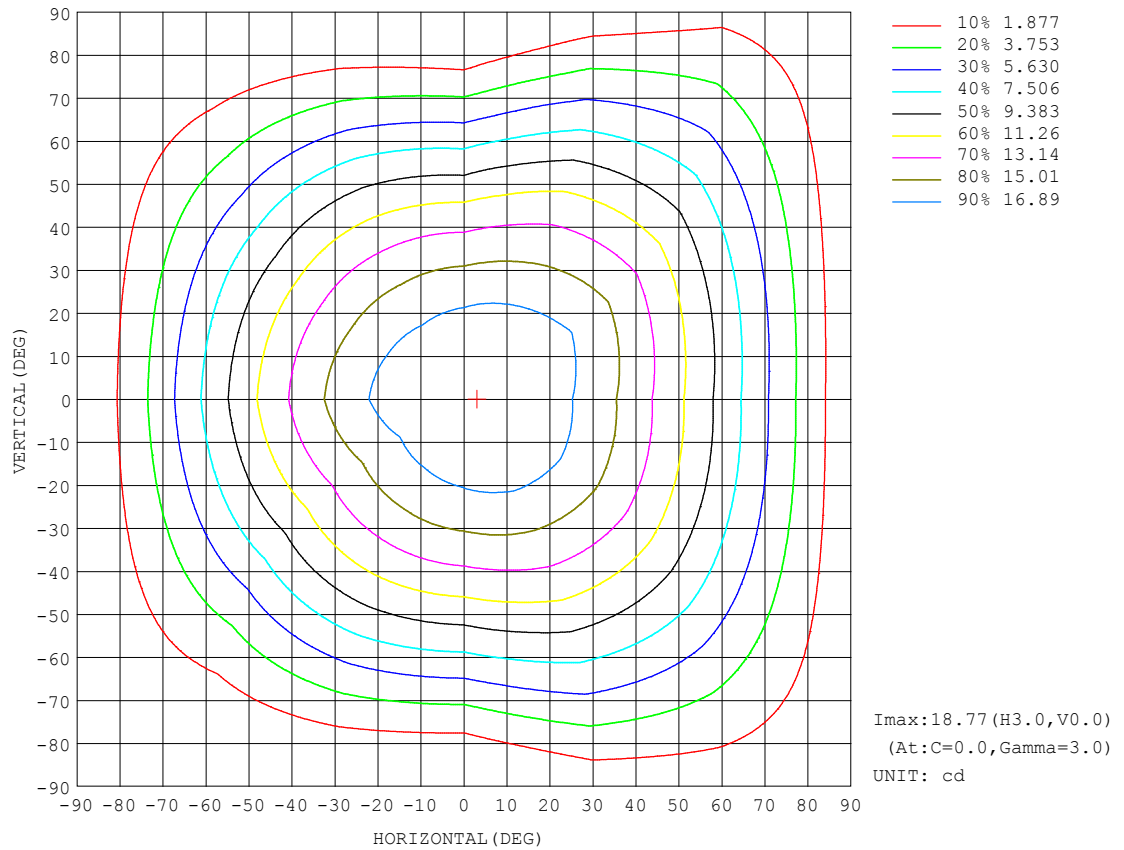
REFLECTANCE										
Ceiling	0.8	0.8	0.8	0.7	0.7	0.7	0.5	0.5	0.5	0
Walls	0.7	0.5	0.3	0.7	0.5	0.3	0.7	0.5	0.3	0
Working plane	0.2	0.2	0.2	0.2	0.2	0.2	0.2	0.2	0.2	0
ROOM INDEX	UTILIZATION FACTORS (PERCENT) $k(RI) \times RCR = 5$									
$k = 0.60$	57	45	38	56	45	38	55	45	38	32
0.80	67	55	48	66	55	48	64	54	47	40
1.00	75	64	57	74	63	56	72	65	56	49
1.25	82	72	64	81	71	64	78	69	63	56
1.50	87	77	70	86	76	70	82	74	68	61
2.00	94	85	79	92	84	78	89	82	76	68
2.50	98	90	84	96	89	83	92	86	81	72
3.00	101	94	89	99	93	88	95	90	85	76
4.00	106	100	95	103	98	93	99	94	91	81
5.00	108	103	99	105	101	97	101	97	94	84
ROOM INDEX	UF (total)									Direct
According to DIN EN 13032-2 2004			Suspended					SHRNOM = 1.25		

C Range: 0 - 360DEG
 C Interval: 30.0DEG
 Test Speed: HIGH
 Temperature: 25.3DEG
 Operators: LPC
 Test Date: 2021-12-27

γ Range: 0 - 120DEG
 γ Interval: 1.0DEG
 Test System: EVERFINE GO-2000B_V1 SYSTEM V2.0.362
 Humidity: 65.0%
 Test Distance: 9.200m [K=1.0000]
 Remarks:

ISOCANDELA DIAGRAM

Test:U:48.00V I:0.1161A P:5.573W PF:1.000 Freq:50.00Hz Lamp Flux:53.5579x1 lm		
NAME: SF15-48V-5050-60-RGB-R	TYPE: 硅胶	WEIGHT:
SPEC.:	DIM.: 21mm*11.5mm	SERIAL No.:2021122709
MFR.: OLYMPIA	SUR.:1*0.0115	Shielding Angle:

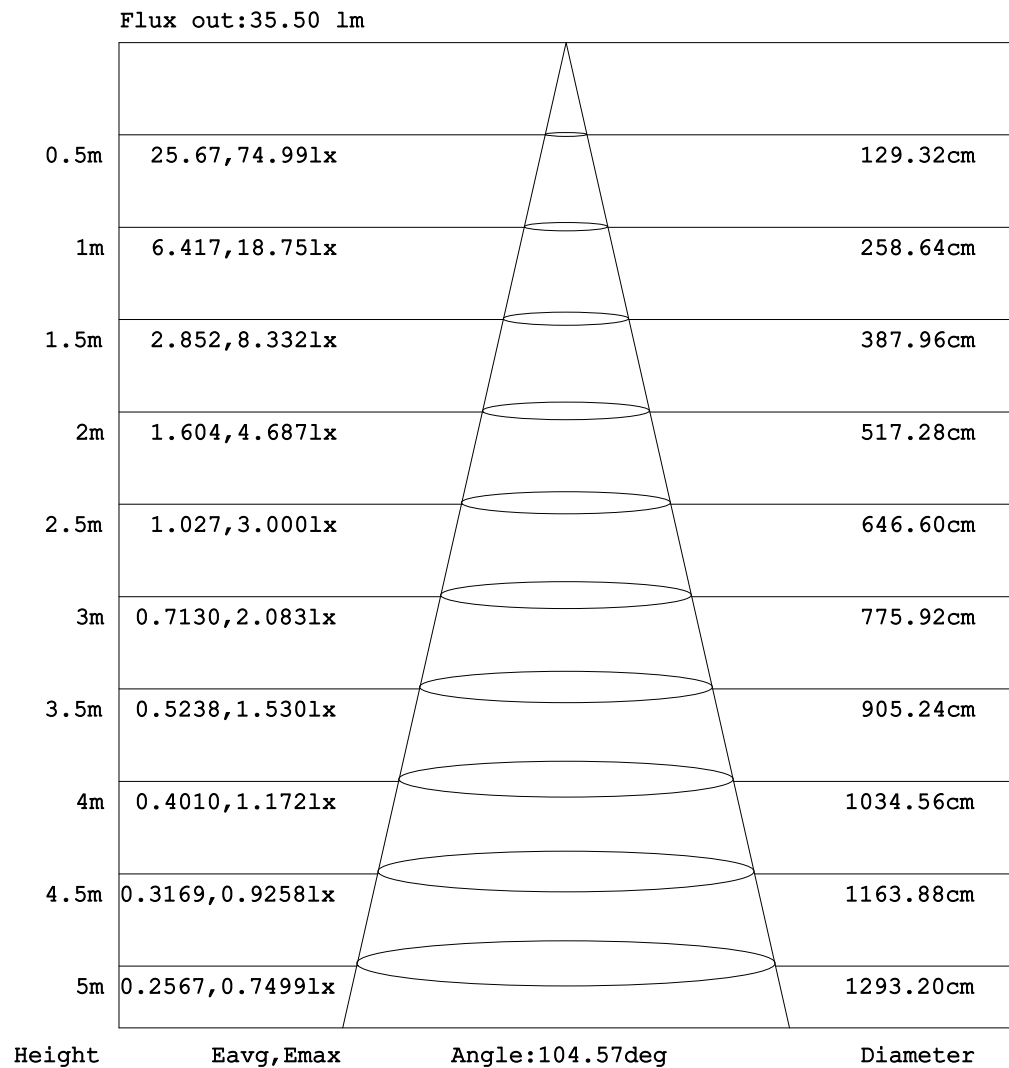


C Range: 0 - 360DEG
C Interval: 30.0DEG
Test Speed: HIGH
Temperature:25.3DEG
Operators:LPC
Test Date:2021-12-27

γ Range: 0 - 120DEG
 γ Interval: 1.0DEG
Test System:EVERFINE GO-2000B_V1 SYSTEM V2.0.362
Humidity:65.0%
Test Distance:9.200m [K=1.0000]
Remarks:

AAI Figure

Test:U:48.00V I:0.1161A P:5.573W PF:1.000 Freq:50.00Hz Lamp Flux:53.5579x1 lm		
NAME: SF15-48V-5050-60-RGB-R	TYPE: 硅胶	WEIGHT:
SPEC.:	DIM.: 21mm*11.5mm	SERIAL No.:2021122709
MFR.: OLYMPIA	SUR.:1*0.0115	Shielding Angle:



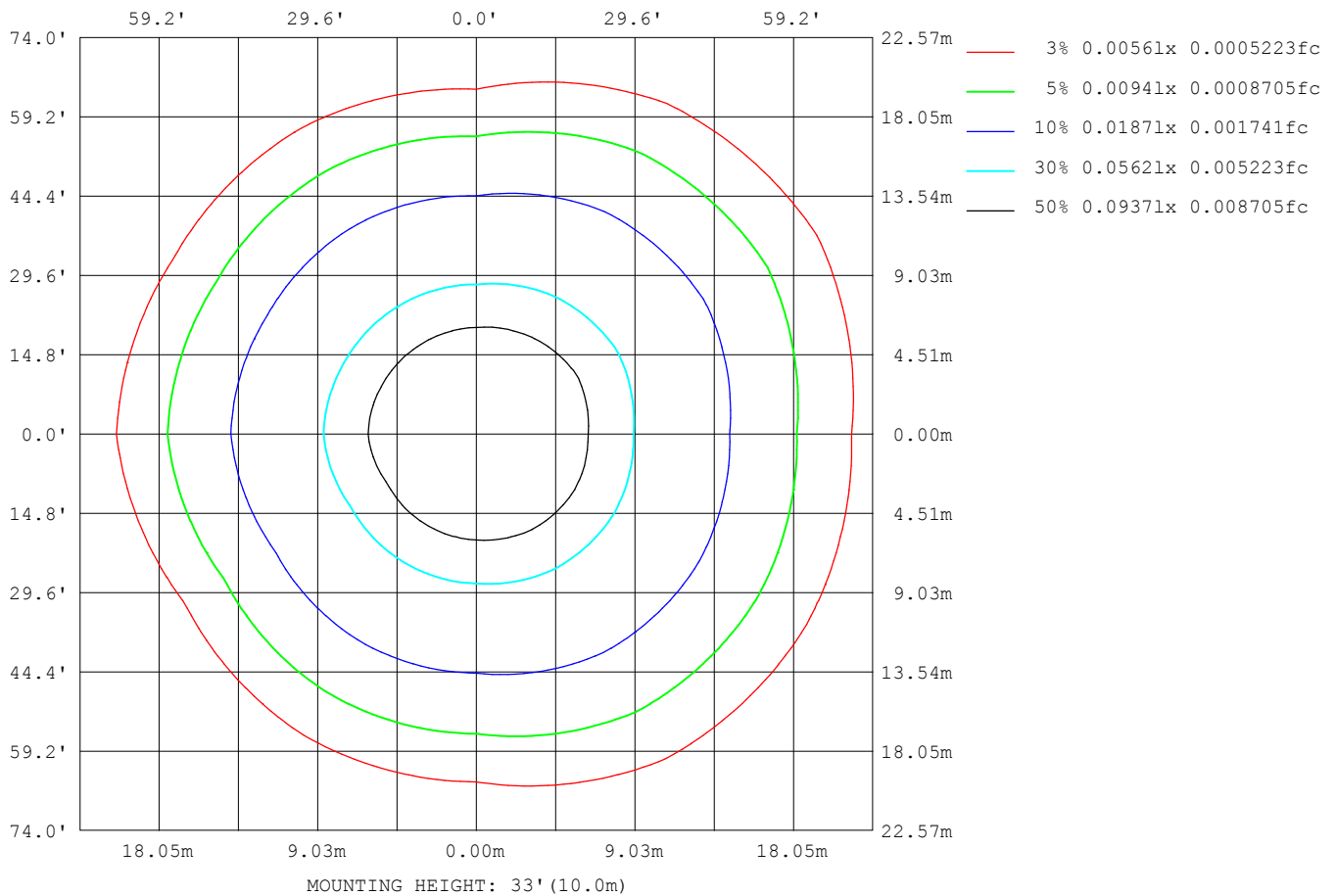
Note: The Curves indicate the illuminated area and the average illumination when the luminaire is at different distance.

C Range: 0 - 360DEG
 C Interval: 30.0DEG
 Test Speed: HIGH
 Temperature: 25.3DEG
 Operators: LPC
 Test Date: 2021-12-27

γ Range: 0 - 120DEG
 γ Interval: 1.0DEG
 Test System: EVERFINE GO-2000B_V1 SYSTEM V2.0.362
 Humidity: 65.0%
 Test Distance: 9.200m [K=1.0000]
 Remarks:

ISOLUX DIAGRAM

Test:U:48.00V I:0.1161A P:5.573W PF:1.000 Freq:50.00Hz Lamp Flux:53.5579x1 lm		
NAME: SF15-48V-5050-60-RGB-R	TYPE: 硅胶	WEIGHT:
SPEC.:	DIM.: 21mm*11.5mm	SERIAL No.:2021122709
MFR.: OLYMPIA	SUR.:1*0.0115	Shielding Angle:



C Range: 0 - 360DEG
C Interval: 30.0DEG
Test Speed: HIGH
Temperature:25.3DEG
Operators:LPC
Test Date:2021-12-27

γ Range: 0 - 120DEG
 γ Interval: 1.0DEG
Test System:EVERFINE GO-2000B_V1 SYSTEM V2.0.362
Humidity:65.0%
Test Distance:9.200m [K=1.0000]
Remarks:

LED Avg.L Report

Test:U:48.00V I:0.1161A P:5.573W PF:1.000 Freq:50.00Hz Lamp Flux:53.5579x1 lm		
NAME: SF15-48V-5050-60-RGB-R	TYPE:硅胶	WEIGHT:
SPEC.:	DIM.: 21mm*11.5mm	SERIAL No.:2021122709
MFR.: OLYMPIA	SUR.:1*0.0115	Shielding Angle:

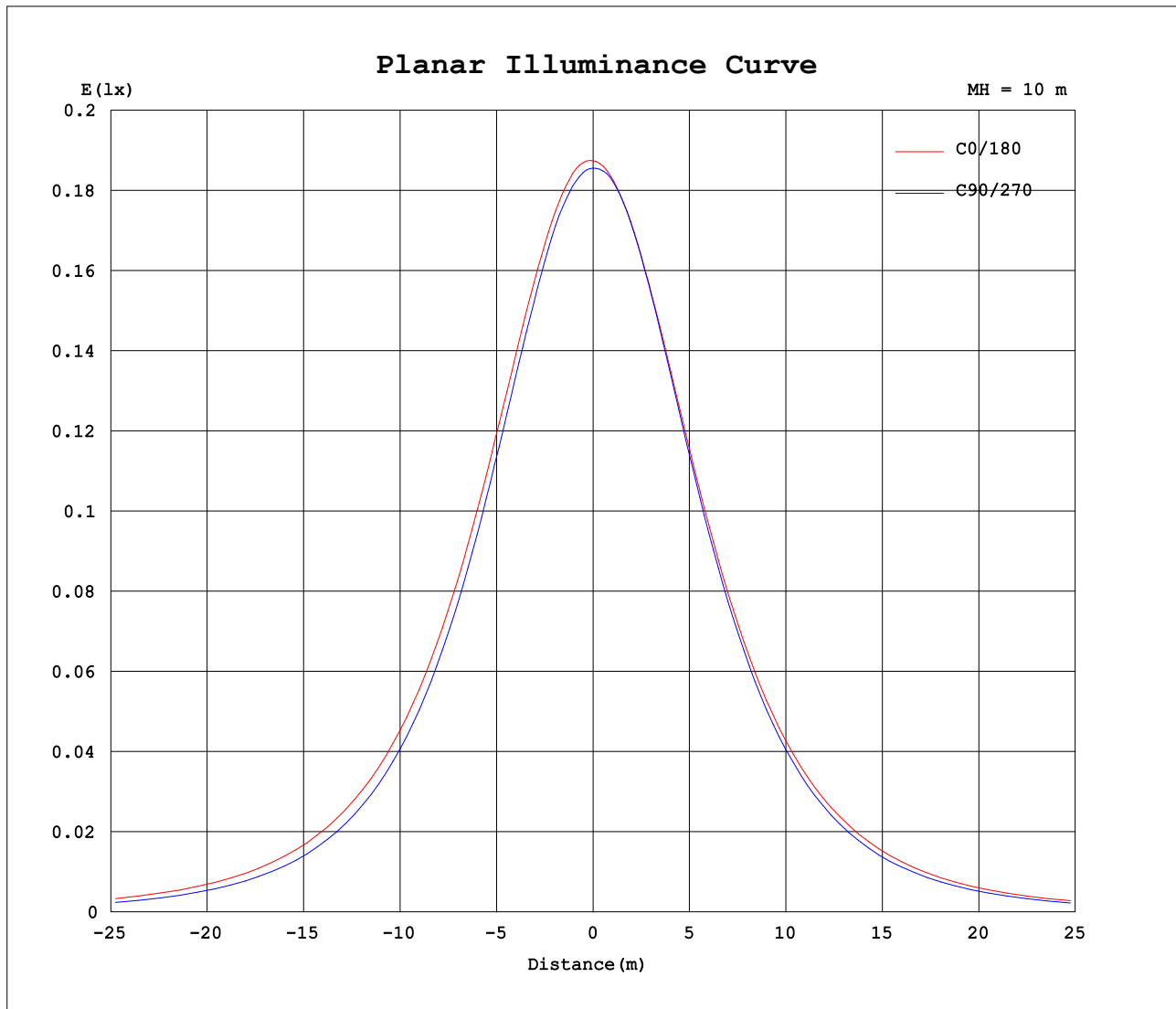
AvgL	cd/m2
L_0~180 (65) av	1407
L_0~180 (75) av	1297
L_0~180 (85) av	1342
L_90~270 (65) av	1127
L_90~270 (75) av	828
L_90~270 (85) av	173
L_45 (65) av	1392
L_45 (75) av	1297
L_45 (85) av	1407

Standard: GB/T 29293-2012

C Range: 0 - 360DEG
C Interval: 30.0DEG
Test Speed: HIGH
Temperature:25.3DEG
Operators:LPC
Test Date:2021-12-27

γ Range: 0 - 120DEG
γ Interval: 1.0DEG
Test System:EVERFINE GO-2000B_V1 SYSTEM V2.0.362
Humidity:65.0%
Test Distance:9.200m [K=1.0000]
Remarks:

Planar Illuminance Curve



C Range: 0 - 360DEG
C Interval: 30.0DEG
Test Speed: HIGH
Temperature: 25.3DEG
Operators: LPC
Test Date: 2021-12-27

γ Range: 0 - 120DEG
 γ Interval: 1.0DEG
Test System: EVERFINE GO-2000B_V1 SYSTEM V2.0.362
Humidity: 65.0%
Test Distance: 9.200m [K=1.0000]
Remarks:

LUMINOUS DISTRIBUTION INTENSITY DATA

Test:U:48.00V I:0.1161A P:5.573W PF:1.000 Freq:50.00Hz Lamp Flux:53.5579x1 lm																	
NAME: SF15-48V-5050-60-RGB-R									TYPE: 硅胶						WEIGHT:		
SPEC.:									DIM.: 21mm*11.5mm						SERIAL No.:2021122709		
MFR.: OLYMPIA									SUR.:1*0.0115						Shielding Angle:		

Table--1

UNIT: cd

C (DEG) γ (DEG)	0	30	60	90	120	150	180	210	240	270	300	330						
0	18.7	18.7	18.6	18.6	18.6	18.6	18.7	18.7	18.6	18.6	18.6	18.6						
5	18.8	18.7	18.6	18.4	18.4	18.3	18.6	18.5	18.4	18.6	18.6	18.7						
10	18.5	18.5	18.5	18.2	18.0	17.8	18.3	18.2	18.1	18.3	18.5	18.7						
15	18.2	18.2	18.1	17.7	17.4	17.2	17.8	17.6	17.6	17.8	18.1	18.4						
20	17.6	17.7	17.5	17.0	16.6	16.4	17.2	17.0	16.8	17.1	17.6	18.0						
25	16.9	17.1	16.8	16.1	15.8	15.5	16.4	16.1	16.0	16.2	16.8	17.4						
30	16.1	16.3	15.9	15.2	14.8	14.5	15.5	15.1	15.0	15.2	16.0	16.8						
35	15.1	15.3	14.9	14.1	13.7	13.4	14.5	14.1	14.0	14.1	15.1	15.9						
40	14.0	14.3	13.8	12.8	12.5	12.2	13.3	12.9	12.8	12.8	14.1	15.0						
45	12.8	13.1	12.7	11.5	11.2	10.9	12.1	11.6	11.6	11.5	13.1	13.9						
50	11.6	11.9	11.5	10.1	9.90	9.44	10.7	10.2	10.3	10.0	11.8	12.7						
55	10.2	10.6	10.1	8.64	8.49	7.96	9.33	8.78	8.85	8.48	10.6	11.4						
60	8.80	9.19	8.78	7.13	7.03	6.46	7.85	7.25	7.37	6.93	9.19	10.0						
65	7.34	7.75	7.39	5.59	5.55	4.94	6.33	5.71	5.87	5.37	7.75	8.63						
70	5.87	6.29	5.99	4.06	4.07	3.50	4.81	4.18	4.33	3.83	6.30	7.16						
75	4.38	4.82	4.56	2.60	2.64	2.17	3.34	2.75	2.85	2.33	4.80	5.68						
80	2.95	3.36	3.13	1.26	1.40	1.14	2.03	1.54	1.52	1.00	3.33	4.18						
85	1.66	1.98	1.80	0.23	0.57	0.49	1.03	0.68	0.53	0.12	1.91	2.74						
90	0.83	0.95	0.74	0.16	0.31	0.35	0.40	0.28	0.22	0.06	0.75	1.46						
95	0.39	0.43	0.33	0.16	0.31	0.29	0.21	0.23	0.21	0.06	0.22	0.64						
100	0.24	0.28	0.27	0.18	0.31	0.24	0.21	0.21	0.19	0.06	0.19	0.24						
105	0.20	0.27	0.23	0.19	0.27	0.18	0.21	0.19	0.18	0.08	0.18	0.16						
110	0.14	0.25	0.23	0.20	0.28	0.13	0.21	0.20	0.18	0.08	0.16	0.11						
115	0.08	0.24	0.20	0.21	0.29	0.08	0.21	0.20	0.12	0.08	0.13	0.07						
120	0.02	0.23	0.06	0.06	0.12	0.02	0.21	0.03	0.03	0.14	0.04	0.02						
125	0.00	0.00	0.00	0.00	0.00	0.00	0.00	0.00	0.00	0.00	0.00	0.00						
130	0.00	0.00	0.00	0.00	0.00	0.00	0.00	0.00	0.00	0.00	0.00	0.00						
135	0.00	0.00	0.00	0.00	0.00	0.00	0.00	0.00	0.00	0.00	0.00	0.00						
140	0.00	0.00	0.00	0.00	0.00	0.00	0.00	0.00	0.00	0.00	0.00	0.00						
145	0.00	0.00	0.00	0.00	0.00	0.00	0.00	0.00	0.00	0.00	0.00	0.00						
150	0.00	0.00	0.00	0.00	0.00	0.00	0.00	0.00	0.00	0.00	0.00	0.00						
155	0.00	0.00	0.00	0.00	0.00	0.00	0.00	0.00	0.00	0.00	0.00	0.00						
160	0.00	0.00	0.00	0.00	0.00	0.00	0.00	0.00	0.00	0.00	0.00	0.00						
165	0.00	0.00	0.00	0.00	0.00	0.00	0.00	0.00	0.00	0.00	0.00	0.00						
170	0.00	0.00	0.00	0.00	0.00	0.00	0.00	0.00	0.00	0.00	0.00	0.00						
175	0.00	0.00	0.00	0.00	0.00	0.00	0.00	0.00	0.00	0.00	0.00	0.00						
180	0.00	0.00	0.00	0.00	0.00	0.00	0.00	0.00	0.00	0.00	0.00	0.00						

C Range: 0 - 360DEG
C Interval: 30.0DEG
Test Speed: HIGH
Temperature:25.3DEG
Operators:LPC
Test Date:2021-12-27

γ Range: 0 - 120DEG
γ Interval: 1.0DEG
Test System:EVERFINE GO-2000B_V1 SYSTEM V2.0.362
Humidity:65.0%
Test Distance:9.200m [K=1.0000]
Remarks:

Photometric Data Table [cd]

G/C	0.0	30.0	60.0	90.0	120.0	150.0	180.0	210.0	240.0	270.0
0.0	18.74	18.72	18.62	18.56	18.60	18.55	18.74	18.72	18.62	18.56
3.0	18.77	18.72	18.62	18.52	18.48	18.40	18.69	18.64	18.53	18.56
6.0	18.73	18.69	18.58	18.41	18.30	18.18	18.56	18.48	18.38	18.51
9.0	18.61	18.60	18.52	18.24	18.06	17.90	18.36	18.26	18.18	18.36
12.0	18.41	18.44	18.34	18.00	17.76	17.56	18.13	17.98	17.91	18.11
15.0	18.16	18.23	18.08	17.67	17.38	17.18	17.82	17.64	17.56	17.79
18.0	17.85	17.96	17.74	17.27	16.95	16.77	17.46	17.25	17.14	17.41
21.0	17.48	17.62	17.35	16.84	16.47	16.26	17.05	16.81	16.68	16.94
24.0	17.06	17.20	16.92	16.34	15.94	15.74	16.59	16.31	16.17	16.44
27.0	16.60	16.76	16.42	15.78	15.38	15.14	16.07	15.75	15.63	15.85
30.0	16.08	16.27	15.86	15.17	14.77	14.50	15.51	15.14	15.05	15.23
33.0	15.51	15.71	15.29	14.52	14.14	13.86	14.90	14.53	14.42	14.57
36.0	14.90	15.12	14.65	13.80	13.46	13.15	14.26	13.85	13.77	13.84
39.0	14.25	14.50	14.02	13.08	12.74	12.42	13.57	13.15	13.07	13.08
42.0	13.56	13.83	13.37	12.32	12.00	11.66	12.84	12.40	12.34	12.29
45.0	12.84	13.12	12.65	11.52	11.25	10.86	12.07	11.63	11.59	11.46
48.0	12.07	12.38	11.92	10.68	10.45	10.01	11.29	10.78	10.80	10.59
51.0	11.30	11.62	11.21	9.827	9.622	9.164	10.47	9.924	9.988	9.698
54.0	10.49	10.83	10.40	8.948	8.788	8.255	9.622	9.069	9.139	8.813
57.0	9.657	10.02	9.622	8.028	7.913	7.380	8.752	8.139	8.269	7.853
60.0	8.803	9.189	8.782	7.128	7.034	6.460	7.852	7.255	7.375	6.928
63.0	7.934	8.325	7.964	6.199	6.155	5.540	6.937	6.325	6.480	5.989
66.0	7.049	7.466	7.124	5.259	5.255	4.651	6.033	5.391	5.565	5.029
69.0	6.160	6.591	6.280	4.364	4.350	3.772	5.108	4.496	4.636	4.164
72.0	5.275	5.696	5.421	3.435	3.481	2.942	4.203	3.626	3.726	3.195
75.0	4.381	4.817	4.556	2.601	2.637	2.174	3.340	2.752	2.847	2.330
78.0	3.506	3.933	3.697	1.767	1.857	1.506	2.520	1.988	2.023	1.510
81.0	2.671	3.068	2.862	1.008	1.193	0.9686	1.797	1.349	1.284	0.7659
84.0	1.892	2.234	2.054	0.3952	0.6852	0.5870	1.209	0.8259	0.6768	0.1827
87.0	1.284	1.511	1.329	0.2005	0.3928	0.3959	0.7275	0.4635	0.3008	0.0705
90.0	0.8256	0.9485	0.7405	0.1632	0.3117	0.3487	0.3962	0.2818	0.2206	0.0553
93.0	0.5285	0.5870	0.4179	0.1548	0.3066	0.3115	0.2110	0.2312	0.2127	0.0553
96.0	0.3473	0.3563	0.3018	0.1633	0.3101	0.2793	0.2110	0.2262	0.2048	0.0553
99.0	0.2514	0.2788	0.2765	0.1765	0.3080	0.2471	0.2110	0.2111	0.1969	0.0553
102.0	0.2362	0.2720	0.2265	0.1834	0.2916	0.2148	0.2110	0.1961	0.1890	0.0603
105.0	0.2008	0.2652	0.2264	0.1905	0.2703	0.1826	0.2111	0.1927	0.1811	0.0754
108.0	0.1653	0.2584	0.2263	0.1975	0.2758	0.1504	0.2111	0.1952	0.1709	0.0754
111.0	0.1299	0.2516	0.2262	0.2045	0.2813	0.1182	0.2111	0.1976	0.1860	0.0754
114.0	0.0945	0.2448	0.2322	0.2115	0.2932	0.0859	0.2111	0.2001	0.1353	0.0754
117.0	0.0591	0.2380	0.1451	0.1527	0.2982	0.0537	0.2111	0.1340	0.0846	0.0955
120.0	0.0236	0.2312	0.0580	0.0611	0.1193	0.0215	0.2111	0.0335	0.0338	0.1357
G/C	300.0	330.0								
0.0	18.60	18.55								
3.0	18.63	18.65								
6.0	18.59	18.70								
9.0	18.51	18.70								
12.0	18.36	18.61								
15.0	18.13	18.45								
18.0	17.81	18.19								
21.0	17.43	17.90								
24.0	17.00	17.56								
27.0	16.52	17.19								
30.0	15.99	16.77								
33.0	15.44	16.28								
36.0	14.88	15.74								
39.0	14.31	15.15								
42.0	13.70	14.52								
45.0	13.05	13.87								
48.0	12.28	13.17								
51.0	11.60	12.43								
54.0	10.82	11.67								
57.0	10.01	10.87								
60.0	9.194	10.03								
63.0	8.334	9.200								
66.0	7.470	8.336								
69.0	6.596	7.451								
72.0	5.696	6.587								
75.0	4.802	5.682								
78.0	3.917	4.772								
81.0	3.037	3.892								
84.0	2.198	3.018								
87.0	1.410	2.184								
90.0	0.7472	1.459								

C Range: 0 - 360DEG
 C Interval: 30.0DEG
 Test Speed: HIGH
 Temperature: 25.3DEG
 Operators: LPC
 Test Date: 2021-12-27

γ Range: 0 - 120DEG
 γ Interval: 1.0DEG
 Test System: EVERFINE GO-2000B_V1 SYSTEM V2.0.362
 Humidity: 65.0%
 Test Distance: 9.200m [K=1.0000]
 Remarks:

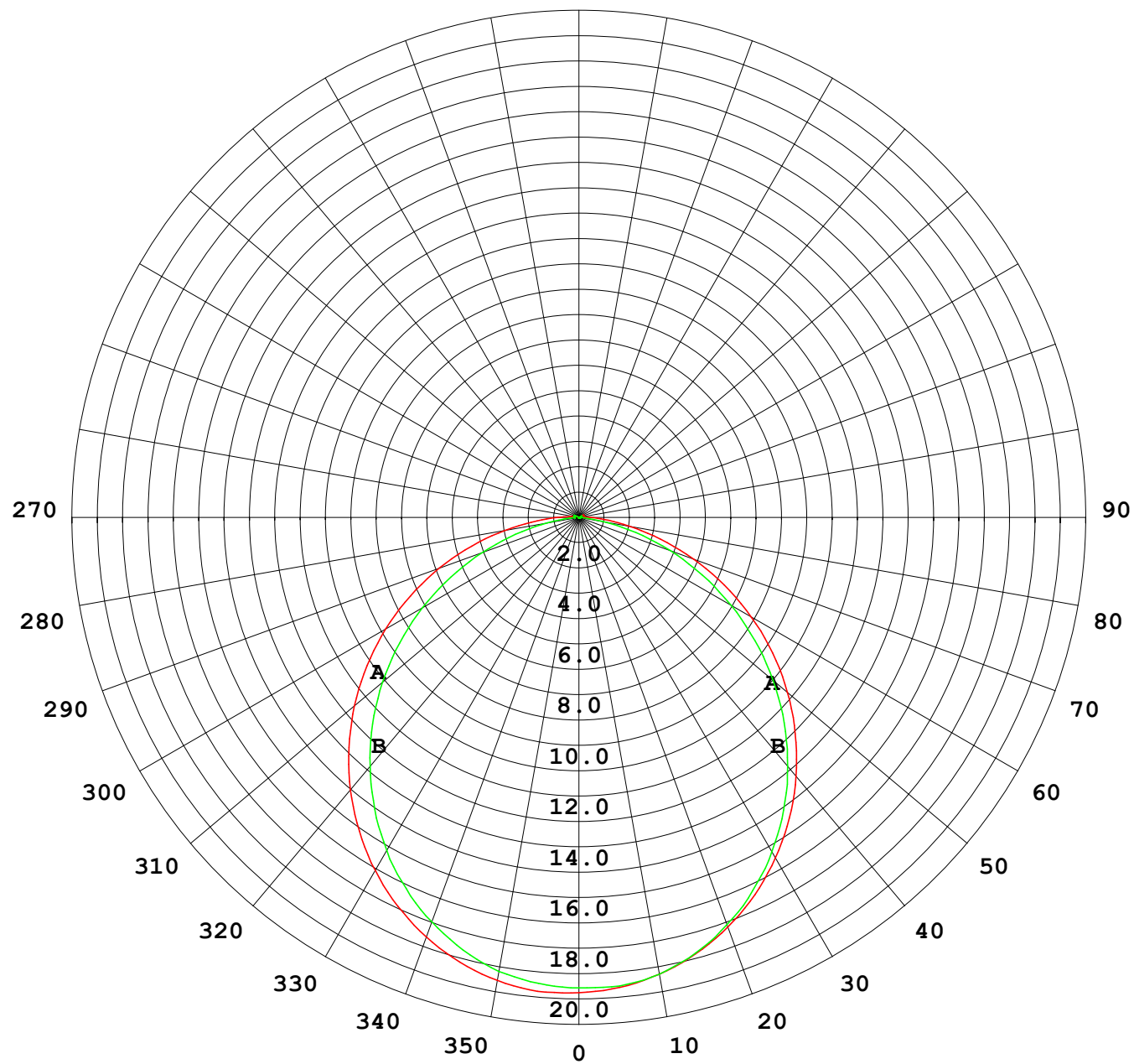
Photometric Data Table [cd]

93.0	0.3561	0.9111
96.0	0.2006	0.5488
99.0	0.1923	0.3074
102.0	0.1841	0.1870
105.0	0.1759	0.1590
108.0	0.1677	0.1309
111.0	0.1595	0.1029
114.0	0.1512	0.0748
117.0	0.0945	0.0468
120.0	0.0378	0.0187

C Range: 0 - 360DEG
C Interval: 30.0DEG
Test Speed: HIGH
Temperature: 25.3DEG
Operators: LPC
Test Date: 2021-12-27

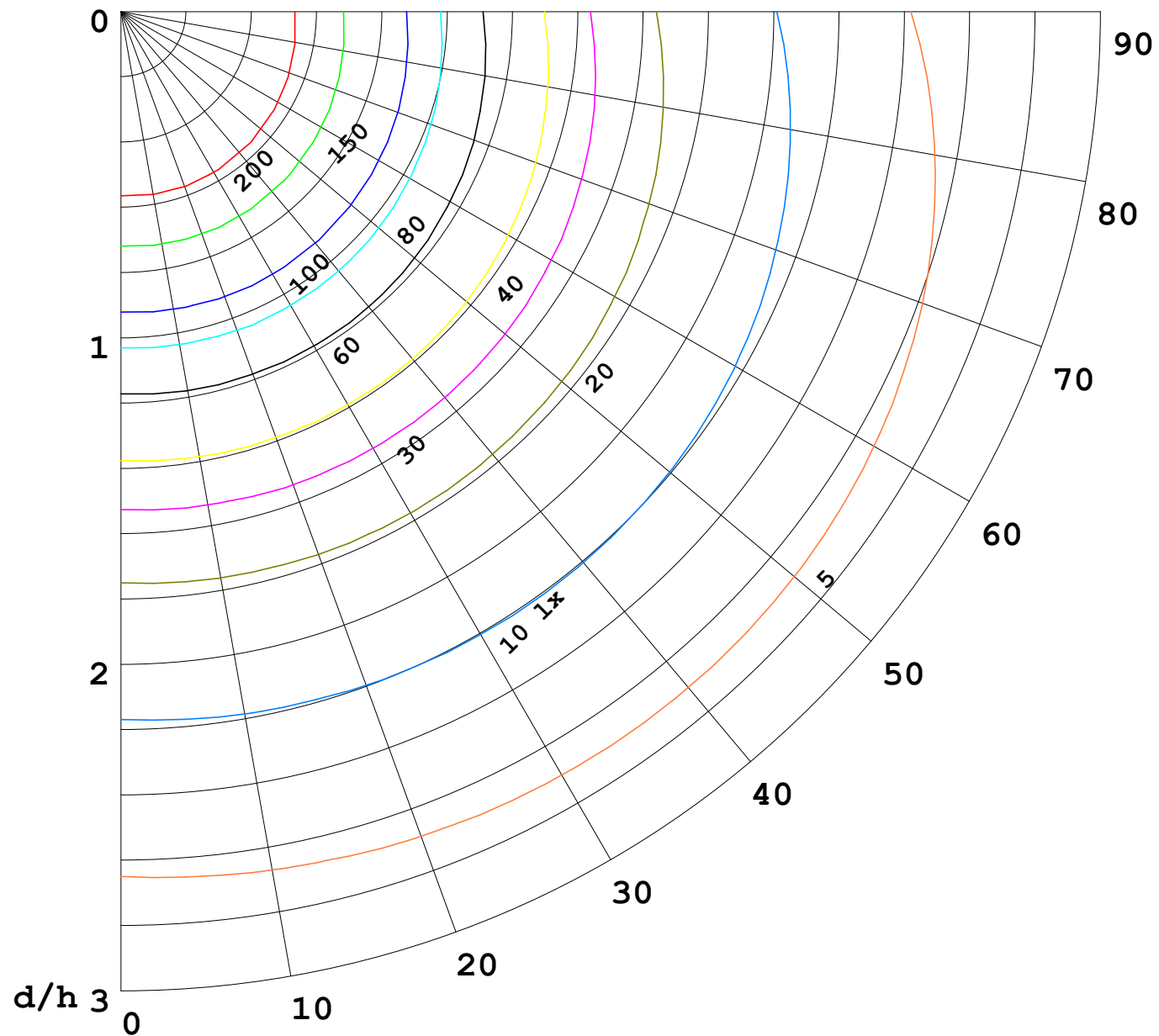
γ Range: 0 - 120DEG
γ Interval: 1.0DEG
Test System: EVERFINE GO-2000B_V1 SYSTEM V2.0.362
Humidity: 65.0%
Test Distance: 9.200m [K=1.0000]
Remarks:

I (cd)



1000 lm

$\kappa = 1$



F = 5000 lm
 K = 0.7
 Hcc = 0.0 m
 Hfc = 0.0 m
 Eave = 100 lx

	Pcc	Pw	Pfc
—	70	50	30
—	50	30	20

