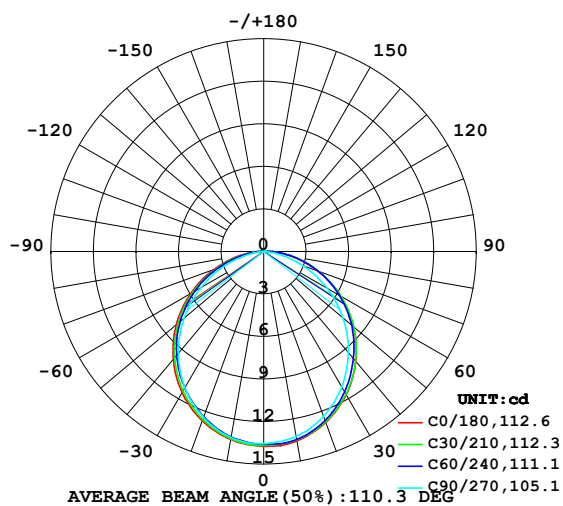


LUMINAIRE PHOTOMETRIC TEST REPORT

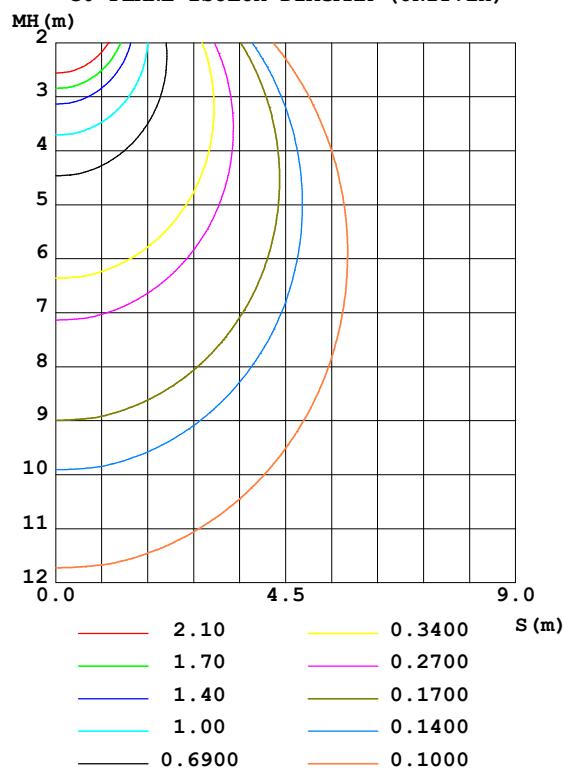
Test:U:24.00V I:0.2112A P:5.069W PF:1.000 Freq:50.00Hz Lamp Flux:38.8559x1 lm		
NAME: SF15-24V-5050-72-RGB-R	TYPE: 硅胶	WEIGHT:
SPEC.:	DIM.: 21mm*11.5mm	SERIAL No.:2021122705
MFR.: OLYMPIA	SUR.:1*0.0115	Shielding Angle:

DATA OF LAMP		PHOTOMETRIC DATA				Eff: 7.67 lm/W
MODEL	5050	I _{max} (cd)	13.75	S/MH (C0/180)	1.25	
NOMINAL POWER (W)	4.3	LOR (%)	100.0	S/MH (C90/270)	1.22	
RATED VOLTAGE (V)	24	TOTAL FLUX (lm)	38.856	η UP, DN (C0-180)	0.6, 48.7	
NOMINAL FLUX (lm)	38.8559	CIE CLASS	DIRECT	η UP, DN (C180-360)	0.5, 50.3	
LAMPS INSIDE	1	η up (%)	1.0	CIBSE SHR NOM	1.25	
TEST VOLTAGE (V)	24	η down (%)	99.0	CIBSE SHR MAX	1.35	

LUMINOUS INTENSITY DISTRIBUTION DIAGRAM



C0 PLANE ISOLUX DIAGRAM (UNIT:lx)



C Range: 0 - 360DEG
 C Interval: 30.0DEG
 Test Speed: HIGH
 Temperature: 25.3DEG
 Operators: LPC
 Test Date: 2021-12-27

γ Range: 0 - 120DEG
 γ Interval: 1.0DEG
 Test System: EVERFINE GO-2000B_V1 SYSTEM V2.0.362
 Humidity: 65.0%
 Test Distance: 9.200m [K=1.0000]
 Remarks:

ZONAL FLUX DIAGRAM

ZONAL FLUX DIAGRAM:

γ	C0	C45	C90	C135	C180	C225	C270	C315	γ	Φ zone	Φ total	%lum, lamp
10	13.56	13.46	13.24	13.05	13.46	13.34	13.32	13.41	0- 10	1.286	1.286	3.31,3.31
20	12.82	12.73	12.37	12.12	12.69	12.50	12.44	12.76	10- 20	3.670	4.955	12.8,12.8
30	11.66	11.53	11.03	10.81	11.50	11.25	11.11	11.68	20- 30	5.520	10.48	27,27
40	10.11	9.976	9.296	9.172	9.924	9.662	9.360	10.29	30- 40	6.610	17.09	44,44
50	8.270	8.200	7.300	7.272	8.054	7.785	7.335	8.604	40- 50	6.824	23.91	61.5,61.5
60	6.239	6.232	5.139	5.206	5.963	5.691	5.113	6.661	50- 60	6.151	30.06	77.4,77.4
70	4.078	4.136	2.923	3.053	3.767	3.498	2.842	4.561	60- 70	4.710	34.77	89.5,89.5
80	1.957	2.045	0.8878	1.123	1.662	1.417	0.7755	2.425	70- 80	2.762	37.53	96.6,96.6
90	0.5035	0.4424	0.0905	0.2061	0.3462	0.2352	0.0202	0.5982	80- 90	0.9248	38.46	99,99
100	0.1395	0.1602	0.1106	0.1651	0.1293	0.1175	0.0401	0.0907	90-100	0.2027	38.66	99.5,99.5
110	0.0761	0.1177	0.1039	0.1137	0.0705	0.1295	0.0452	0.0829	100-110	0.1162	38.78	99.8,99.8
120	0.0127	0.0196	0.1407	0.0279	0.0118	0.0414	0.0553	0.0880	110-120	0.0773	38.85	100,100
130	0	0	0	0	0	0	0	0	120-130	0.0031	38.86	100,100
140	0	0	0	0	0	0	0	0	130-140	0	38.86	100,100
150	0	0	0	0	0	0	0	0	140-150	0	38.86	100,100
160	0	0	0	0	0	0	0	0	150-160	0	38.86	100,100
170	0	0	0	0	0	0	0	0	160-170	0	38.86	100,100
180	0	0	0	0	0	0	0	0	170-180	0	38.86	100,100
DEG	LUMINOUS INTENSITY:cd									UNIT:lm		

Conical surface Flux(90deg): 20.527 lm

%lum = 52.8%

%lamp = 52.8%

Conical surface Flux(120deg): 30.06 lm

%lum = 77.4%

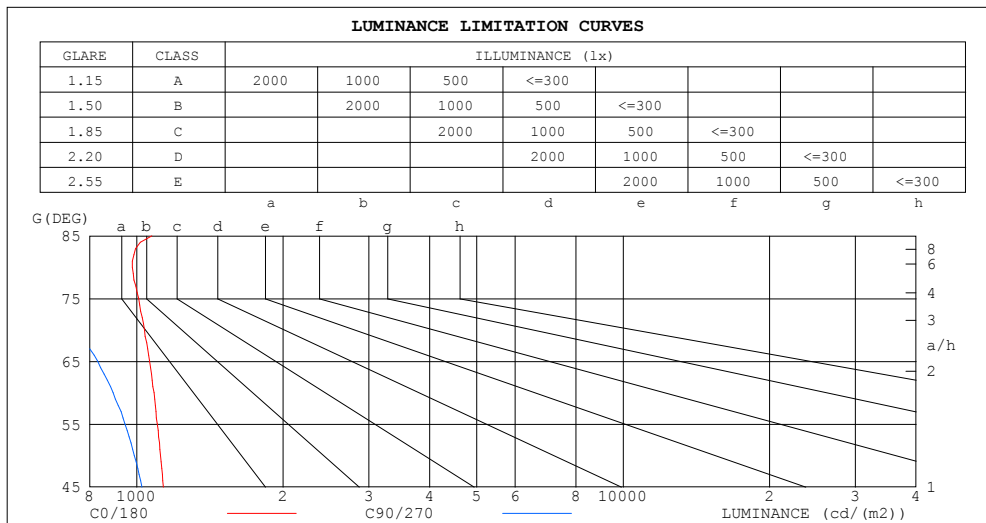
%lamp = 77.4%

C Range: 0 - 360DEG
 C Interval: 30.0DEG
 Test Speed: HIGH
 Temperature:25.3DEG
 Operators:LPC
 Test Date:2021-12-27

γ Range: 0 - 120DEG
 γ Interval: 1.0DEG
 Test System:EVERFINE GO-2000B_V1 SYSTEM V2.0.362
 Humidity:65.0%
 Test Distance:9.200m [K=1.0000]
 Remarks:

LUMINANCE LIMITATION CURVES

Test:U:24.00V I:0.2112A P:5.069W PF:1.000 Freq:50.00Hz Lamp Flux:38.8559x1 lm		
NAME: SF15-24V-5050-72-RGB-R	TYPE: 硅胶	WEIGHT:
SPEC.:	DIM.: 21mm*11.5mm	SERIAL No.:2021122705
MFR.: OLYMPIA	SUR.:1*0.0115	Shielding Angle:



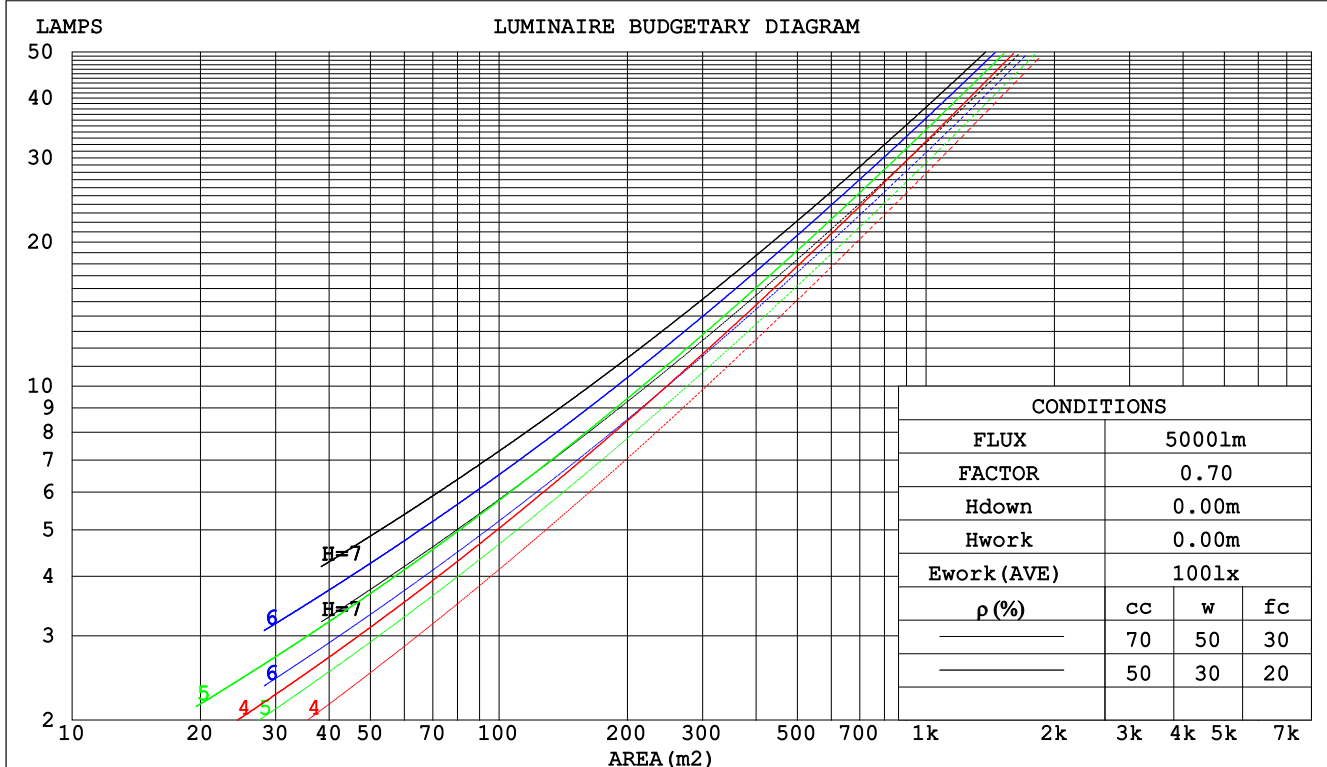
C Range: 0 - 360DEG
C Interval: 30.0DEG
Test Speed: HIGH
Temperature:25.3DEG
Operators:LPC
Test Date:2021-12-27

γ Range: 0 - 120DEG
 γ Interval: 1.0DEG
Test System:EVERFINE GO-2000B_V1 SYSTEM V2.0.362
Humidity:65.0%
Test Distance:9.200m [K=1.0000]
Remarks:

CU AND LUMINAIRE BUDGETARY ESTIMATE DIAGRAM

Test:U:24.00V I:0.2112A P:5.069W PF:1.000 Freq:50.00Hz Lamp Flux:38.8559x1 lm		
NAME: SF15-24V-5050-72-RGB-R	TYPE: 硅胶	WEIGHT:
SPEC.:	DIM.: 21mm*11.5mm	SERIAL No.:2021122705
MFR.: OLYMPIA	SUR.:1*0.0115	Shielding Angle:

pcc	80%			70%			50%			30%			10%			0
pw	50%	30%	10%	50%	30%	10%	50%	30%	10%	50%	30%	10%	50%	30%	10%	0
pfc	20%			20%			20%			20%			20%			0
RCR	RCR:Room Cavity Ratio						Coefficients of Utilization(CU)									
0.0	1.19	1.19	1.19	1.16	1.16	1.16	1.11	1.11	1.11	1.06	1.06	1.06	1.01	1.01	1.01	.99
1.0	1.03	.99	.95	1.01	.97	.93	.97	.93	.90	.92	.90	.87	.89	.87	.85	.82
2.0	.90	.83	.77	.88	.82	.76	.84	.79	.74	.81	.76	.72	.78	.74	.71	.68
3.0	.79	.71	.64	.77	.70	.63	.74	.68	.62	.71	.66	.61	.68	.64	.60	.57
4.0	.70	.61	.54	.68	.60	.54	.66	.59	.53	.63	.57	.52	.61	.56	.51	.49
5.0	.62	.53	.47	.61	.53	.46	.59	.51	.46	.57	.50	.45	.55	.49	.45	.42
6.0	.56	.47	.41	.55	.47	.40	.53	.46	.40	.51	.45	.40	.50	.44	.39	.37
7.0	.51	.42	.36	.50	.42	.36	.48	.41	.35	.47	.40	.35	.45	.39	.35	.33
8.0	.46	.38	.32	.46	.38	.32	.44	.37	.32	.43	.36	.31	.42	.36	.31	.29
9.0	.43	.34	.29	.42	.34	.29	.41	.34	.28	.40	.33	.28	.39	.33	.28	.26
10.0	.39	.31	.26	.39	.31	.26	.38	.31	.26	.37	.30	.26	.36	.30	.26	.24



C Range: 0 - 360DEG
 C Interval: 30.0DEG
 Test Speed: HIGH
 Temperature:25.3DEG
 Operators:LPC
 Test Date:2021-12-27

γ Range: 0 - 120DEG
 γ Interval: 1.0DEG
 Test System:EVERFINE GO-2000B_V1 SYSTEM V2.0.362
 Humidity:65.0%
 Test Distance:9.200m [K=1.0000]
 Remarks:

WEC AND CCEC

Test:U:24.00V I:0.2112A P:5.069W PF:1.000 Freq:50.00Hz Lamp Flux:38.8559x1 lm					
NAME: SF15-24V-5050-72-RGB-R			TYPE: 硅胶		WEIGHT:
SPEC.:			DIM.: 21mm*11.5mm		SERIAL No.:2021122705
MFR.: OLYMPIA			SUR.:1*0.0115		Shielding Angle:

pcc	80%			70%			50%			30%			10%			0	
pw	50%	30%	10%	50%	30%	10%	50%	30%	10%	50%	30%	10%	50%	30%	10%	0	
pfc	20%			20%			20%			20%			20%			0	
RCR	RCR:Room Cavity Ratio						Wall Exitance Coefficients(WEC)										
0.0																	
1.0	.315	.179	.057	.308	.175	.056	.294	.169	.054	.281	.162	.052	.269	.156	.050		
2.0	.294	.161	.049	.288	.158	.049	.275	.153	.048	.264	.148	.046	.254	.143	.045		
3.0	.271	.144	.043	.265	.142	.043	.255	.138	.042	.245	.134	.041	.235	.130	.040		
4.0	.250	.130	.038	.245	.128	.038	.235	.125	.037	.226	.121	.037	.218	.118	.036		
5.0	.231	.118	.034	.226	.116	.034	.218	.113	.033	.210	.111	.033	.202	.108	.032		
6.0	.214	.107	.031	.210	.106	.030	.202	.104	.030	.195	.101	.030	.188	.099	.029		
7.0	.199	.098	.028	.195	.097	.028	.188	.095	.027	.182	.093	.027	.176	.091	.027		
8.0	.186	.091	.026	.182	.090	.025	.176	.088	.025	.170	.086	.025	.165	.085	.025		
9.0	.174	.084	.023	.171	.083	.023	.165	.082	.023	.160	.080	.023	.155	.079	.023		
10.0	.163	.078	.022	.161	.078	.022	.156	.076	.022	.151	.075	.021	.147	.074	.021		

pcc	80%			70%			50%			30%			10%			0
pw	50%	30%	10%	50%	30%	10%	50%	30%	10%	50%	30%	10%	50%	30%	10%	0
pfc	20%			20%			20%			20%			20%			0
RCR	RCR:Room Cavity Ratio						Ceiling Cavity Exitance Coefficients(CCEC)									
0.0	.198	.198	.198	.169	.169	.169	.116	.116	.116	.066	.066	.066	.021	.021	.021	
1.0	.189	.164	.142	.161	.141	.122	.110	.097	.084	.064	.056	.049	.020	.018	.016	
2.0	.180	.140	.106	.155	.120	.091	.106	.083	.064	.061	.048	.037	.020	.016	.012	
3.0	.173	.122	.082	.148	.105	.071	.102	.073	.050	.059	.043	.029	.019	.014	.010	
4.0	.165	.109	.066	.142	.094	.058	.097	.066	.041	.056	.038	.024	.018	.013	.008	
5.0	.158	.099	.055	.135	.085	.048	.093	.060	.034	.054	.035	.020	.017	.011	.007	
6.0	.150	.090	.047	.129	.078	.041	.089	.055	.029	.052	.032	.017	.017	.011	.006	
7.0	.144	.083	.041	.123	.072	.036	.085	.051	.025	.050	.030	.015	.016	.010	.005	
8.0	.137	.078	.037	.118	.067	.032	.082	.047	.023	.047	.028	.014	.015	.009	.004	
9.0	.131	.073	.033	.113	.063	.029	.078	.044	.021	.046	.026	.012	.015	.009	.004	
10.0	.125	.068	.031	.108	.059	.027	.075	.042	.019	.044	.025	.011	.014	.008	.004	

C Range: 0 - 360DEG
C Interval: 30.0DEG
Test Speed: HIGH
Temperature:25.3DEG
Operators:LPC
Test Date:2021-12-27

γ Range: 0 - 120DEG
γ Interval: 1.0DEG
Test System:EVERFINE GO-2000B_V1 SYSTEM V2.0.362
Humidity:65.0%
Test Distance:9.200m [K=1.0000]
Remarks:

UGR(Unified Glare Rating) Table

Test:U:24.00V I:0.2112A P:5.069W PF:1.000 Freq:50.00Hz Lamp Flux:38.8559x1 lm											
NAME: SF15-24V-5050-72-RGB-R						TYPE:硅胶			WEIGHT:		
SPEC.:						DIM.: 21mm*11.5mm			SERIAL No.:2021122705		
MFR.: OLYMPIA						SUR.:1*0.0115			Shielding Angle:		
ceiling/cavity	0.7	0.7	0.5	0.5	0.3	0.7	0.7	0.5	0.5	0.3	
walls	0.5	0.3	0.5	0.3	0.3	0.5	0.3	0.5	0.3	0.3	
working plane	0.2	0.2	0.2	0.2	0.2	0.2	0.2	0.2	0.2	0.2	
Room dimensions		Viewed crosswise					Viewed endwise				
x = 2H y = 2H	24.6	26.1	24.9	26.4	26.6	24.1	25.6	24.4	25.8	26.1	
	3H	26.3	27.7	26.6	27.9	28.2	25.5	26.9	25.8	27.1	27.4
	4H	27.0	28.3	27.3	28.6	28.9	25.9	27.3	26.3	27.5	27.8
	6H	27.6	28.8	27.9	29.1	29.4	26.2	27.5	26.5	27.7	28.0
	8H	27.8	29.0	28.1	29.3	29.6	26.2	27.4	26.6	27.7	28.1
	12H	28.0	29.1	28.3	29.4	29.8	26.2	27.4	26.6	27.7	28.0
4H	2H	25.3	26.6	25.6	26.9	27.2	24.9	26.2	25.2	26.5	26.8
	3H	27.1	28.3	27.5	28.6	29.0	26.5	27.7	26.9	28.0	28.3
	4H	28.0	29.1	28.4	29.4	29.8	27.2	28.3	27.6	28.6	29.0
	6H	28.7	29.7	29.1	30.0	30.4	27.6	28.6	28.0	28.9	29.3
	8H	29.0	29.9	29.4	30.3	30.7	27.7	28.6	28.1	29.0	29.4
	12H	29.2	30.0	29.7	30.4	30.9	27.7	28.5	28.2	28.9	29.4
8H	4H	28.3	29.2	28.8	29.6	30.0	27.6	28.5	28.1	28.9	29.3
	6H	29.2	30.0	29.7	30.4	30.8	28.3	29.1	28.8	29.5	29.9
	8H	29.6	30.3	30.1	30.7	31.2	28.5	29.2	29.0	29.6	30.1
	12H	30.0	30.5	30.5	31.0	31.5	28.7	29.2	29.2	29.7	30.2
12H	4H	28.4	29.2	28.8	29.6	30.0	27.7	28.5	28.1	28.9	29.3
	6H	29.3	30.0	29.8	30.4	30.9	28.5	29.1	28.9	29.6	30.0
	8H	29.8	30.3	30.3	30.8	31.3	28.8	29.3	29.3	29.8	30.3
Variations with the observer position at spacings:											
S = 1.0H	+ 0.1 / - 0.2					+ 0.2 / - 0.2					
1.5H	+ 0.2 / - 0.3					+ 0.3 / - 0.4					
2.0H	+ 0.1 / - 0.3					+ 0.2 / - 0.5					

CIE Pub.117, 38.86 lm Total Lamp Luminous Flux Correct (8log(F/F0) = -11.3)

C Range: 0 - 360DEG
 C Interval: 30.0DEG
 Test Speed: HIGH
 Temperature:25.3DEG
 Operators:LPC
 Test Date:2021-12-27

γ Range: 0 - 120DEG
 γ Interval: 1.0DEG
 Test System:EVERFINE GO-2000B_V1 SYSTEM V2.0.362
 Humidity:65.0%
 Test Distance:9.200m [K=1.0000]
 Remarks:

UTILIZATION FACTORS TABLE

Test:U:24.00V I:0.2112A P:5.069W PF:1.000 Freq:50.00Hz Lamp Flux:38.8559x1 lm		
NAME: SF15-24V-5050-72-RGB-R	TYPE: 硅胶	WEIGHT:
SPEC.:	DIM.: 21mm*11.5mm	SERIAL No.:2021122705
MFR.: OLYMPIA	SUR.:1*0.0115	Shielding Angle:

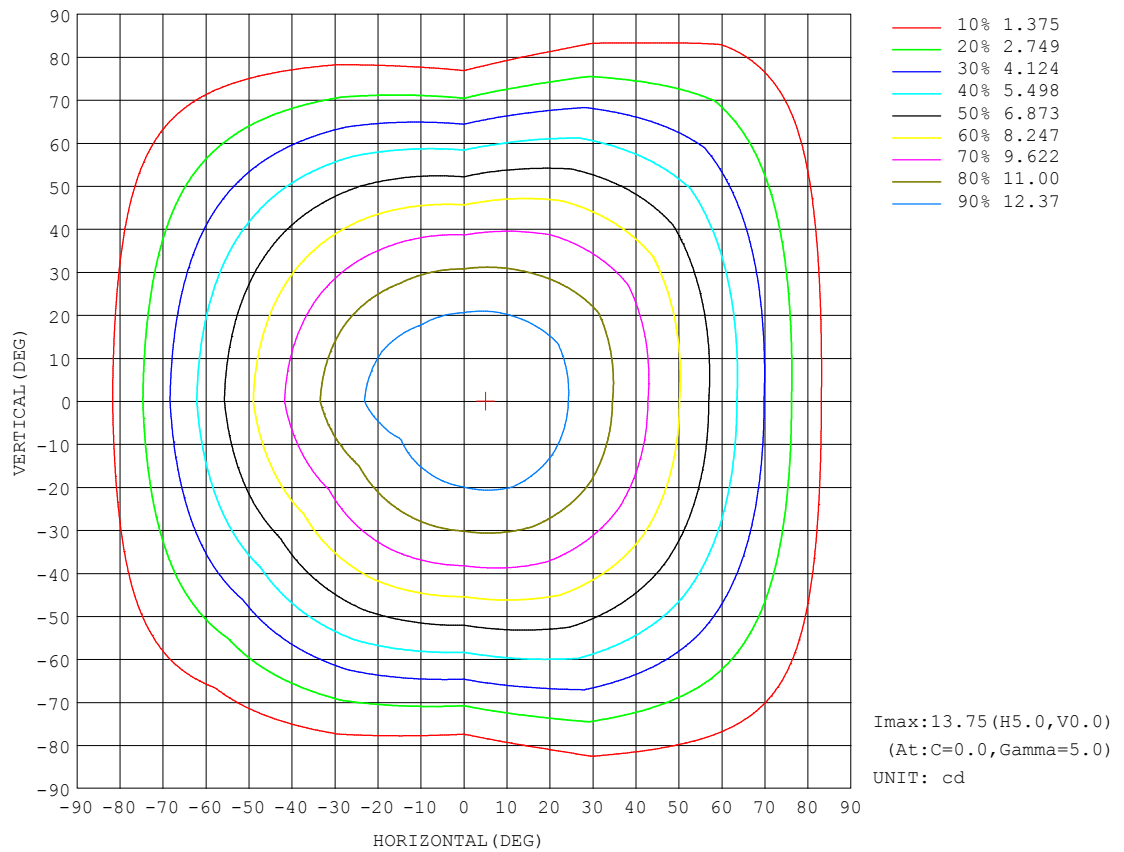
REFLECTANCE										
Ceiling	0.8	0.8	0.8	0.7	0.7	0.7	0.5	0.5	0.5	0
Walls	0.7	0.5	0.3	0.7	0.5	0.3	0.7	0.5	0.3	0
Working plane	0.2	0.2	0.2	0.2	0.2	0.2	0.2	0.2	0.2	0
ROOM INDEX	UTILIZATION FACTORS (PERCENT) $k(RI) \times RCR = 5$									
$k = 0.60$	57	45	38	56	45	38	55	45	38	32
0.80	67	55	48	66	55	48	64	54	47	40
1.00	75	64	57	74	64	57	72	65	56	49
1.25	82	72	65	81	71	64	78	70	63	56
1.50	87	77	70	86	77	70	83	75	69	61
2.00	94	86	79	92	84	78	89	82	77	69
2.50	98	90	84	96	89	83	92	86	81	73
3.00	102	95	89	99	93	88	95	90	86	77
4.00	106	100	95	103	98	94	99	94	91	82
5.00	108	103	99	106	101	97	101	97	94	85
ROOM INDEX	UF (total)									Direct
According to DIN EN 13032-2 2004			Suspended					SHRNOM = 1.25		

C Range: 0 - 360DEG
 C Interval: 30.0DEG
 Test Speed: HIGH
 Temperature: 25.3DEG
 Operators: LPC
 Test Date: 2021-12-27

γ Range: 0 - 120DEG
 γ Interval: 1.0DEG
 Test System: EVERFINE GO-2000B_V1 SYSTEM V2.0.362
 Humidity: 65.0%
 Test Distance: 9.200m [K=1.0000]
 Remarks:

ISOCANDELA DIAGRAM

Test:U:24.00V I:0.2112A P:5.069W PF:1.000 Freq:50.00Hz Lamp Flux:38.8559x1 lm		
NAME: SF15-24V-5050-72-RGB-R	TYPE: 硅胶	WEIGHT:
SPEC.:	DIM.: 21mm*11.5mm	SERIAL No.:2021122705
MFR.: OLYMPIA	SUR.:1*0.0115	Shielding Angle:

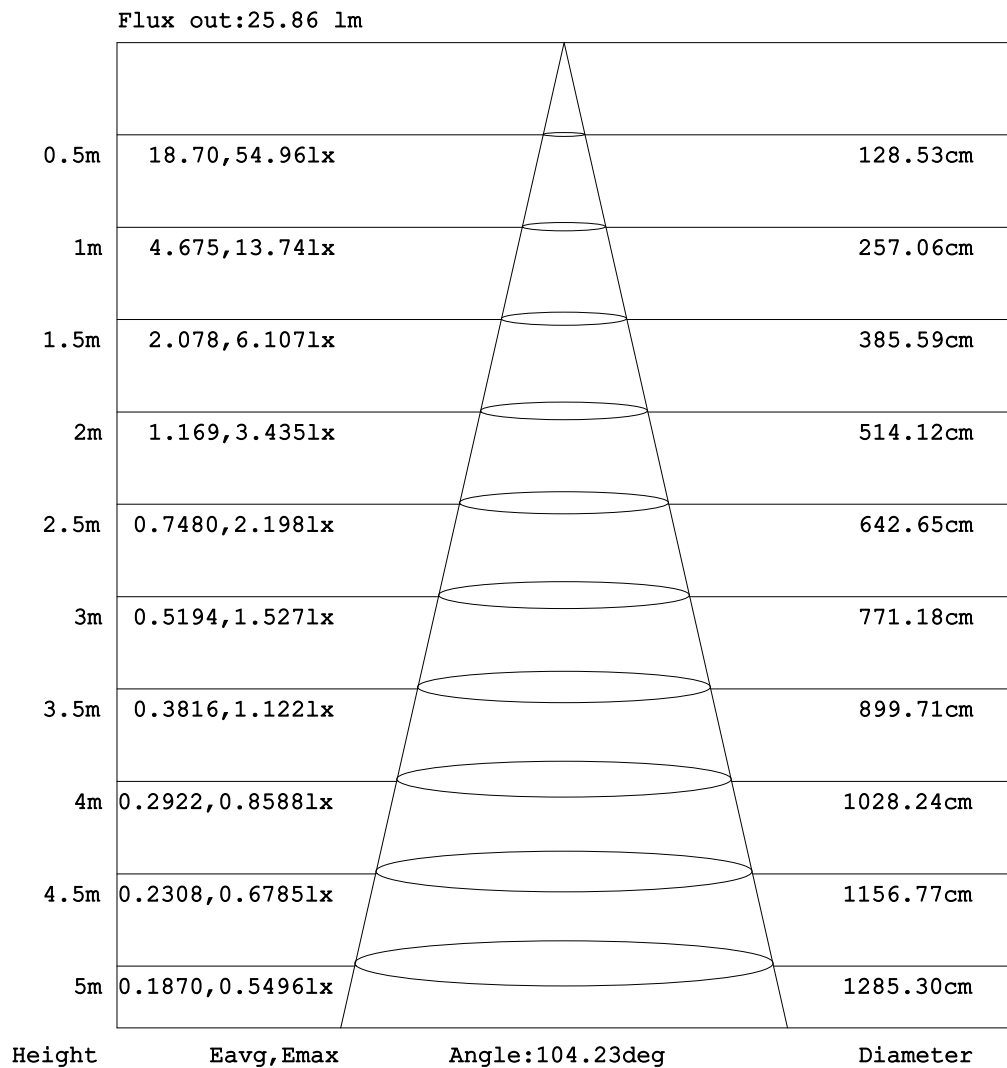


C Range: 0 - 360DEG
C Interval: 30.0DEG
Test Speed: HIGH
Temperature:25.3DEG
Operators:LPC
Test Date:2021-12-27

γ Range: 0 - 120DEG
 γ Interval: 1.0DEG
Test System:EVERFINE GO-2000B_V1 SYSTEM V2.0.362
Humidity:65.0%
Test Distance:9.200m [K=1.0000]
Remarks:

AAI Figure

Test:U:24.00V I:0.2112A P:5.069W PF:1.000 Freq:50.00Hz Lamp Flux:38.8559x1 lm		
NAME: SF15-24V-5050-72-RGB-R	TYPE: 硅胶	WEIGHT:
SPEC.:	DIM.: 21mm*11.5mm	SERIAL No.:2021122705
MFR.: OLYMPIA	SUR.:1*0.0115	Shielding Angle:



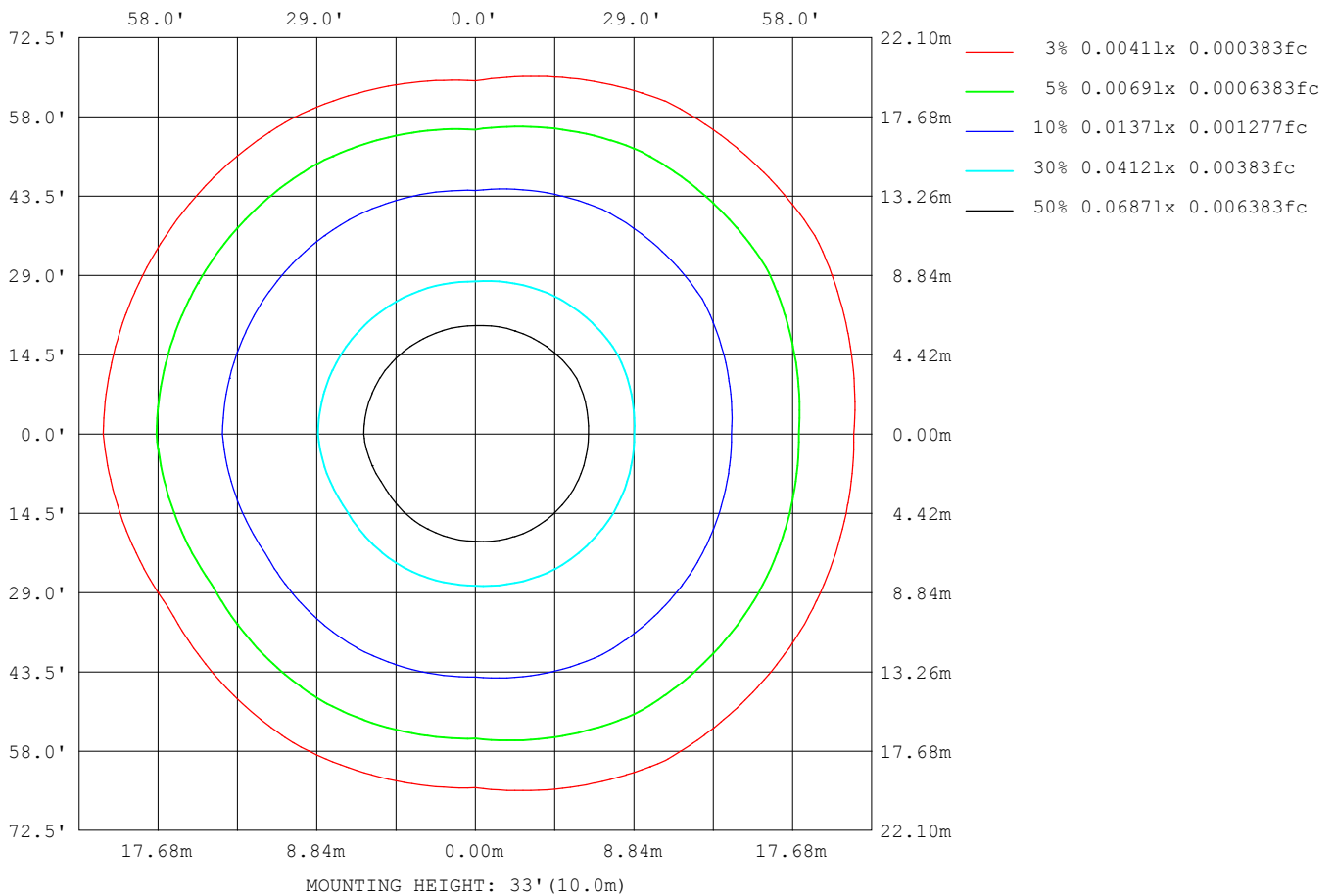
Note: The Curves indicate the illuminated area and the average illumination when the luminaire is at different distance.

C Range: 0 - 360DEG
 C Interval: 30.0DEG
 Test Speed: HIGH
 Temperature: 25.3DEG
 Operators: LPC
 Test Date: 2021-12-27

γ Range: 0 - 120DEG
 γ Interval: 1.0DEG
 Test System: EVERFINE GO-2000B_V1 SYSTEM V2.0.362
 Humidity: 65.0%
 Test Distance: 9.200m [K=1.0000]
 Remarks:

ISOLUX DIAGRAM

Test:U:24.00V I:0.2112A P:5.069W PF:1.000 Freq:50.00Hz Lamp Flux:38.8559x1 lm		
NAME: SF15-24V-5050-72-RGB-R	TYPE: 硅胶	WEIGHT:
SPEC.:	DIM.: 21mm*11.5mm	SERIAL No.:2021122705
MFR.: OLYMPIA	SUR.:1*0.0115	Shielding Angle:



C Range: 0 - 360DEG
C Interval: 30.0DEG
Test Speed: HIGH
Temperature:25.3DEG
Operators:LPC
Test Date:2021-12-27

γ Range: 0 - 120DEG
 γ Interval: 1.0DEG
Test System:EVERFINE GO-2000B_V1 SYSTEM V2.0.362
Humidity:65.0%
Test Distance:9.200m [K=1.0000]
Remarks:

LED Avg.L Report

Test:U:24.00V I:0.2112A P:5.069W PF:1.000 Freq:50.00Hz Lamp Flux:38.8559x1 lm		
NAME: SF15-24V-5050-72-RGB-R	TYPE:硅胶	WEIGHT:
SPEC.:	DIM.: 21mm*11.5mm	SERIAL No.:2021122705
MFR.: OLYMPIA	SUR.:1*0.0115	Shielding Angle:

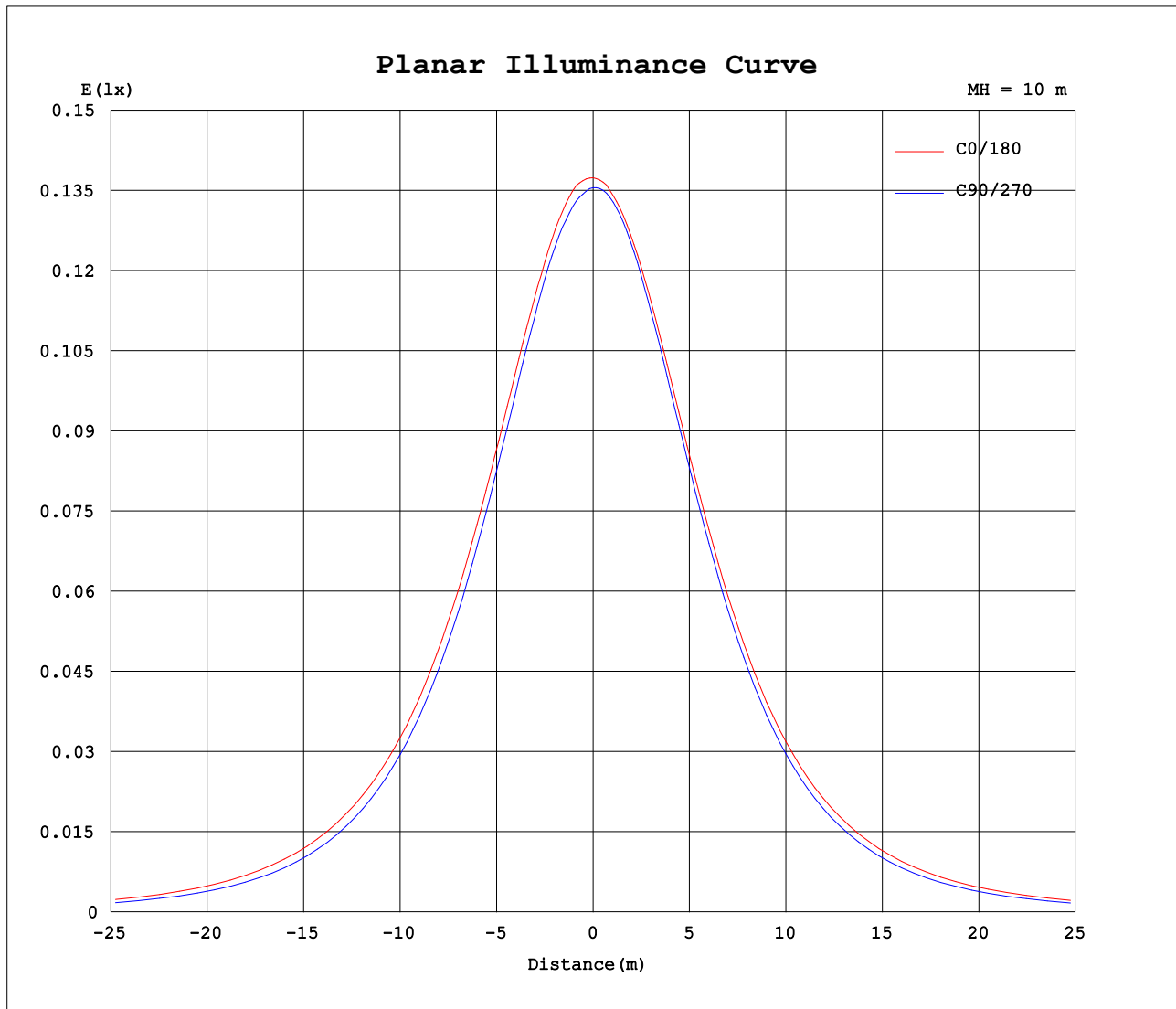
AvgL	cd/m2
L_0~180 (65) av	1032
L_0~180 (75) av	954
L_0~180 (85) av	975
L_90~270 (65) av	826
L_90~270 (75) av	605
L_90~270 (85) av	108
L_45 (65) av	1015
L_45 (75) av	942
L_45 (85) av	948

Standard: GB/T 29293-2012

C Range: 0 - 360DEG
C Interval: 30.0DEG
Test Speed: HIGH
Temperature:25.3DEG
Operators:LPC
Test Date:2021-12-27

γ Range: 0 - 120DEG
γ Interval: 1.0DEG
Test System:EVERFINE GO-2000B_V1 SYSTEM V2.0.362
Humidity:65.0%
Test Distance:9.200m [K=1.0000]
Remarks:

Planar Illuminance Curve



C Range: 0 - 360DEG
C Interval: 30.0DEG
Test Speed: HIGH
Temperature: 25.3DEG
Operators: LPC
Test Date: 2021-12-27

γ Range: 0 - 120DEG
 γ Interval: 1.0DEG
Test System: EVERFINE GO-2000B_V1 SYSTEM V2.0.362
Humidity: 65.0%
Test Distance: 9.200m [K=1.0000]
Remarks:

LUMINOUS DISTRIBUTION INTENSITY DATA

Test:U:24.00V I:0.2112A P:5.069W PF:1.000 Freq:50.00Hz Lamp Flux:38.8559x1 lm		
NAME: SF15-24V-5050-72-RGB-R	TYPE: 硅胶	WEIGHT:
SPEC.:	DIM.: 21mm*11.5mm	SERIAL No.:2021122705
MFR.: OLYMPIA	SUR.:1*0.0115	Shielding Angle:

Table--1

UNIT: cd

C (DEG) γ (DEG)	0	30	60	90	120	150	180	210	240	270	300	330						
0	13.7	13.7	13.6	13.6	13.5	13.4	13.7	13.7	13.6	13.6	13.5	13.4						
5	13.7	13.6	13.6	13.5	13.4	13.3	13.7	13.6	13.5	13.5	13.5	13.5						
10	13.6	13.5	13.5	13.2	13.1	13.0	13.5	13.4	13.3	13.3	13.4	13.5						
15	13.2	13.2	13.1	12.9	12.7	12.6	13.1	13.1	12.9	12.9	13.1	13.2						
20	12.8	12.8	12.7	12.4	12.2	12.1	12.7	12.6	12.4	12.4	12.6	12.9						
25	12.3	12.2	12.1	11.8	11.6	11.5	12.1	12.0	11.8	11.8	12.1	12.4						
30	11.7	11.6	11.4	11.0	10.9	10.7	11.5	11.4	11.1	11.1	11.5	11.9						
35	10.9	10.9	10.7	10.2	10.1	9.94	10.8	10.6	10.4	10.3	10.8	11.3						
40	10.1	10.1	9.85	9.30	9.27	9.07	9.92	9.78	9.55	9.36	10.0	10.5						
45	9.23	9.23	9.01	8.34	8.35	8.15	9.02	8.87	8.65	8.38	9.27	9.72						
50	8.27	8.30	8.10	7.30	7.39	7.16	8.05	7.88	7.69	7.33	8.37	8.84						
55	7.27	7.31	7.15	6.24	6.38	6.13	7.02	6.85	6.67	6.25	7.42	7.89						
60	6.24	6.30	6.16	5.14	5.33	5.08	5.96	5.77	5.62	5.11	6.44	6.88						
65	5.16	5.24	5.13	4.04	4.26	4.00	4.87	4.67	4.53	3.98	5.40	5.87						
70	4.08	4.17	4.10	2.92	3.19	2.92	3.77	3.57	3.43	2.84	4.32	4.80						
75	3.00	3.09	3.06	1.86	2.15	1.89	2.68	2.48	2.34	1.75	3.25	3.73						
80	1.96	2.05	2.04	0.89	1.21	1.04	1.66	1.50	1.33	0.78	2.19	2.66						
85	1.08	1.11	1.11	0.14	0.49	0.45	0.88	0.74	0.51	0.08	1.20	1.63						
90	0.50	0.47	0.41	0.09	0.21	0.20	0.35	0.29	0.18	0.02	0.41	0.79						
95	0.23	0.19	0.19	0.10	0.20	0.17	0.16	0.16	0.12	0.02	0.12	0.33						
100	0.14	0.16	0.17	0.11	0.19	0.14	0.13	0.13	0.11	0.04	0.08	0.11						
105	0.11	0.12	0.15	0.11	0.17	0.11	0.10	0.13	0.11	0.05	0.08	0.09						
110	0.08	0.08	0.15	0.10	0.15	0.08	0.07	0.13	0.13	0.05	0.08	0.09						
115	0.04	0.05	0.09	0.10	0.15	0.05	0.04	0.14	0.10	0.05	0.08	0.09						
120	0.01	0.01	0.03	0.14	0.04	0.01	0.01	0.06	0.03	0.06	0.07	0.11						
125	0.00	0.00	0.00	0.00	0.00	0.00	0.00	0.00	0.00	0.00	0.00	0.00						
130	0.00	0.00	0.00	0.00	0.00	0.00	0.00	0.00	0.00	0.00	0.00	0.00						
135	0.00	0.00	0.00	0.00	0.00	0.00	0.00	0.00	0.00	0.00	0.00	0.00						
140	0.00	0.00	0.00	0.00	0.00	0.00	0.00	0.00	0.00	0.00	0.00	0.00						
145	0.00	0.00	0.00	0.00	0.00	0.00	0.00	0.00	0.00	0.00	0.00	0.00						
150	0.00	0.00	0.00	0.00	0.00	0.00	0.00	0.00	0.00	0.00	0.00	0.00						
155	0.00	0.00	0.00	0.00	0.00	0.00	0.00	0.00	0.00	0.00	0.00	0.00						
160	0.00	0.00	0.00	0.00	0.00	0.00	0.00	0.00	0.00	0.00	0.00	0.00						
165	0.00	0.00	0.00	0.00	0.00	0.00	0.00	0.00	0.00	0.00	0.00	0.00						
170	0.00	0.00	0.00	0.00	0.00	0.00	0.00	0.00	0.00	0.00	0.00	0.00						
175	0.00	0.00	0.00	0.00	0.00	0.00	0.00	0.00	0.00	0.00	0.00	0.00						
180	0.00	0.00	0.00	0.00	0.00	0.00	0.00	0.00	0.00	0.00	0.00	0.00						

C Range: 0 - 360DEG
C Interval: 30.0DEG
Test Speed: HIGH
Temperature:25.3DEG
Operators:LPC
Test Date:2021-12-27

γ Range: 0 - 120DEG
γ Interval: 1.0DEG
Test System:EVERFINE GO-2000B_V1 SYSTEM V2.0.362
Humidity:65.0%
Test Distance:9.200m [K=1.0000]
Remarks:

Photometric Data Table [cd]

G/C	0.0	30.0	60.0	90.0	120.0	150.0	180.0	210.0	240.0	270.0
0.0	13.74	13.68	13.59	13.55	13.50	13.45	13.74	13.68	13.59	13.55
3.0	13.74	13.66	13.60	13.49	13.46	13.36	13.71	13.68	13.55	13.56
6.0	13.72	13.62	13.60	13.41	13.34	13.23	13.62	13.60	13.46	13.50
9.0	13.60	13.52	13.50	13.30	13.18	13.05	13.51	13.47	13.34	13.38
12.0	13.44	13.39	13.35	13.12	12.98	12.83	13.34	13.28	13.15	13.19
15.0	13.24	13.18	13.14	12.88	12.72	12.57	13.14	13.07	12.90	12.95
18.0	13.00	12.97	12.88	12.58	12.41	12.28	12.89	12.81	12.61	12.67
21.0	12.72	12.68	12.57	12.26	12.07	11.95	12.59	12.50	12.28	12.32
24.0	12.40	12.36	12.22	11.87	11.72	11.59	12.27	12.16	11.92	11.96
27.0	12.04	12.01	11.85	11.46	11.32	11.18	11.89	11.79	11.54	11.55
30.0	11.66	11.62	11.43	11.03	10.89	10.74	11.50	11.38	11.13	11.11
33.0	11.23	11.20	10.98	10.53	10.43	10.28	11.06	10.93	10.68	10.63
36.0	10.77	10.75	10.51	10.01	9.942	9.774	10.60	10.45	10.21	10.10
39.0	10.27	10.27	10.02	9.477	9.435	9.260	10.10	9.948	9.718	9.551
42.0	9.757	9.759	9.516	8.924	8.913	8.718	9.567	9.415	9.205	8.978
45.0	9.229	9.231	9.008	8.336	8.355	8.150	9.024	8.867	8.648	8.385
48.0	8.661	8.682	8.465	7.728	7.777	7.552	8.446	8.284	8.079	7.756
51.0	8.074	8.099	7.913	7.099	7.184	6.953	7.848	7.681	7.491	7.114
54.0	7.480	7.507	7.340	6.466	6.591	6.346	7.230	7.063	6.878	6.480
57.0	6.857	6.908	6.762	5.818	5.963	5.712	6.612	6.435	6.265	5.807
60.0	6.239	6.300	6.163	5.139	5.334	5.079	5.963	5.766	5.617	5.113
63.0	5.601	5.662	5.551	4.475	4.686	4.415	5.300	5.119	4.968	4.435
66.0	4.953	5.029	4.927	3.823	4.053	3.782	4.647	4.455	4.310	3.761
69.0	4.289	4.380	4.304	3.144	3.405	3.124	3.988	3.786	3.646	3.073
72.0	3.646	3.737	3.691	2.491	2.772	2.486	3.330	3.133	2.988	2.405
75.0	3.003	3.094	3.063	1.858	2.153	1.893	2.677	2.485	2.335	1.746
78.0	2.359	2.456	2.445	1.260	1.565	1.345	2.059	1.866	1.712	1.143
81.0	1.761	1.837	1.851	0.7071	1.032	0.9082	1.501	1.323	1.144	0.5946
84.0	1.223	1.275	1.289	0.2650	0.5995	0.5418	1.019	0.8660	0.6418	0.1371
87.0	0.8105	0.8031	0.7758	0.0905	0.3224	0.3012	0.6222	0.5137	0.2907	0.0404
90.0	0.5035	0.4717	0.4131	0.0905	0.2113	0.2008	0.3462	0.2870	0.1834	0.0202
93.0	0.3171	0.2660	0.2416	0.0955	0.2061	0.1709	0.1705	0.1761	0.1428	0.0201
96.0	0.2014	0.1835	0.1810	0.1015	0.1986	0.1608	0.1529	0.1559	0.1205	0.0201
99.0	0.1459	0.1623	0.1688	0.1106	0.1911	0.1480	0.1352	0.1358	0.1099	0.0251
102.0	0.1268	0.1412	0.1580	0.1092	0.1835	0.1287	0.1176	0.1270	0.1080	0.0452
105.0	0.1078	0.1200	0.1509	0.1072	0.1668	0.1094	0.0999	0.1289	0.1062	0.0452
108.0	0.0888	0.0988	0.1508	0.1052	0.1542	0.0901	0.0823	0.1312	0.1156	0.0452
111.0	0.0698	0.0776	0.1382	0.1032	0.1502	0.0708	0.0647	0.1343	0.1257	0.0452
114.0	0.0507	0.0565	0.1005	0.1012	0.1505	0.0515	0.0470	0.1367	0.1086	0.0452
117.0	0.0317	0.0353	0.0628	0.1166	0.1076	0.0322	0.0294	0.1391	0.0679	0.0452
120.0	0.0127	0.0141	0.0251	0.1407	0.0430	0.0129	0.0118	0.0556	0.0272	0.0553
G/C	300.0	330.0								
0.0	13.50	13.45								
3.0	13.49	13.48								
6.0	13.48	13.48								
9.0	13.40	13.47								
12.0	13.26	13.40								
15.0	13.07	13.24								
18.0	12.83	13.05								
21.0	12.55	12.78								
24.0	12.22	12.52								
27.0	11.85	12.21								
30.0	11.46	11.90								
33.0	11.05	11.54								
36.0	10.62	11.13								
39.0	10.19	10.69								
42.0	9.734	10.21								
45.0	9.266	9.721								
48.0	8.743	9.204								
51.0	8.185	8.651								
54.0	7.617	8.088								
57.0	7.029	7.495								
60.0	6.441	6.882								
63.0	5.812	6.284								
66.0	5.184	5.656								
69.0	4.541	5.013								
72.0	3.898	4.375								
75.0	3.250	3.726								
78.0	2.606	3.073								
81.0	1.983	2.449								
84.0	1.395	1.811								
87.0	0.8378	1.258								
90.0	0.4061	0.7902								

C Range: 0 - 360DEG
 C Interval: 30.0DEG
 Test Speed: HIGH
 Temperature: 25.3DEG
 Operators: LPC
 Test Date: 2021-12-27

γ Range: 0 - 120DEG
 γ Interval: 1.0DEG
 Test System: EVERFINE GO-2000B_V1 SYSTEM V2.0.362
 Humidity: 65.0%
 Test Distance: 9.200m [K=1.0000]
 Remarks:

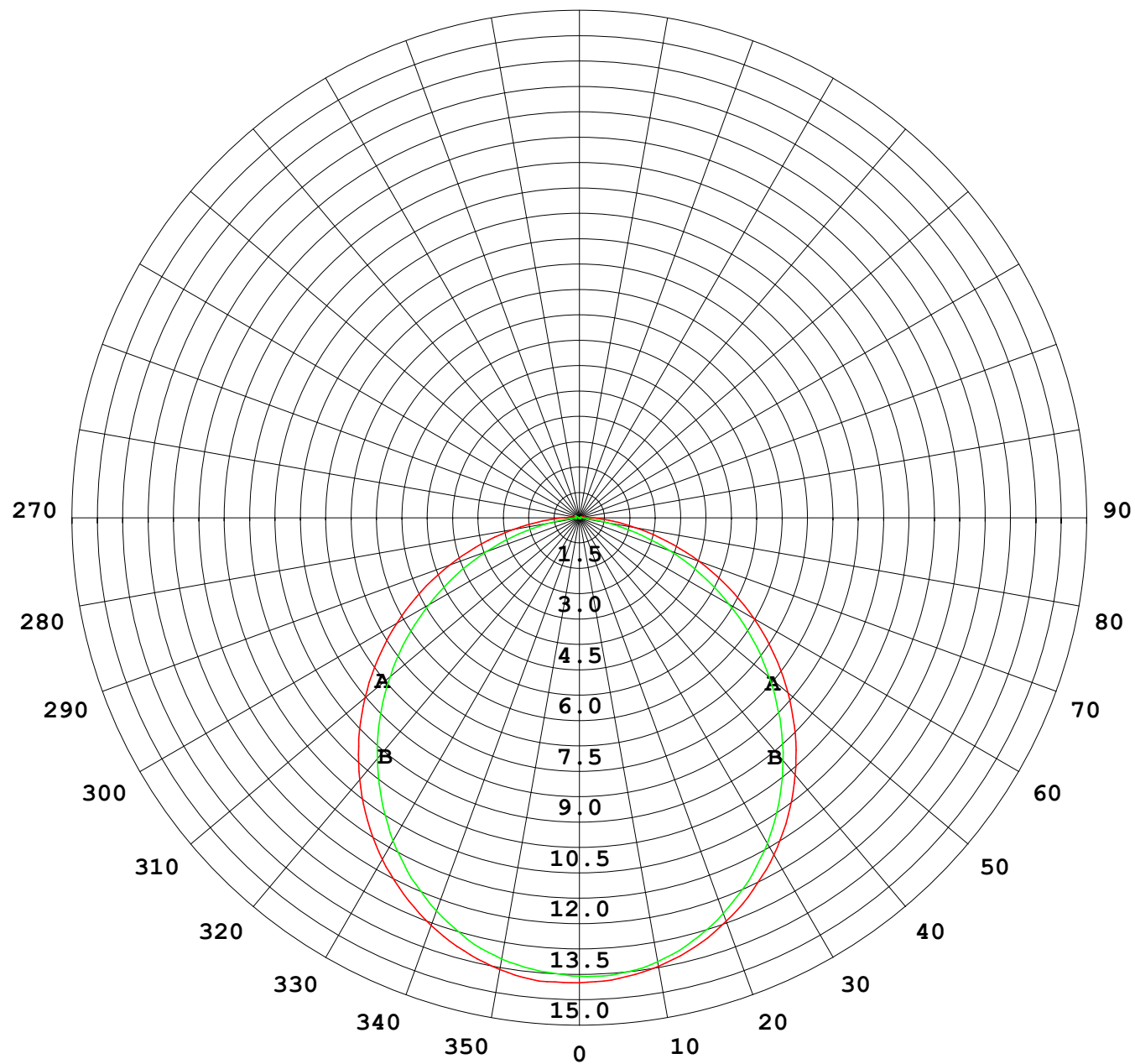
Photometric Data Table [cd]

93.0	0.1854	0.4782
96.0	0.0754	0.2720
99.0	0.0754	0.1462
102.0	0.0754	0.0905
105.0	0.0754	0.0905
108.0	0.0754	0.0905
111.0	0.0754	0.0905
114.0	0.0754	0.0905
117.0	0.0704	0.0905
120.0	0.0704	0.1056

C Range: 0 - 360DEG
C Interval: 30.0DEG
Test Speed: HIGH
Temperature: 25.3DEG
Operators: LPC
Test Date: 2021-12-27

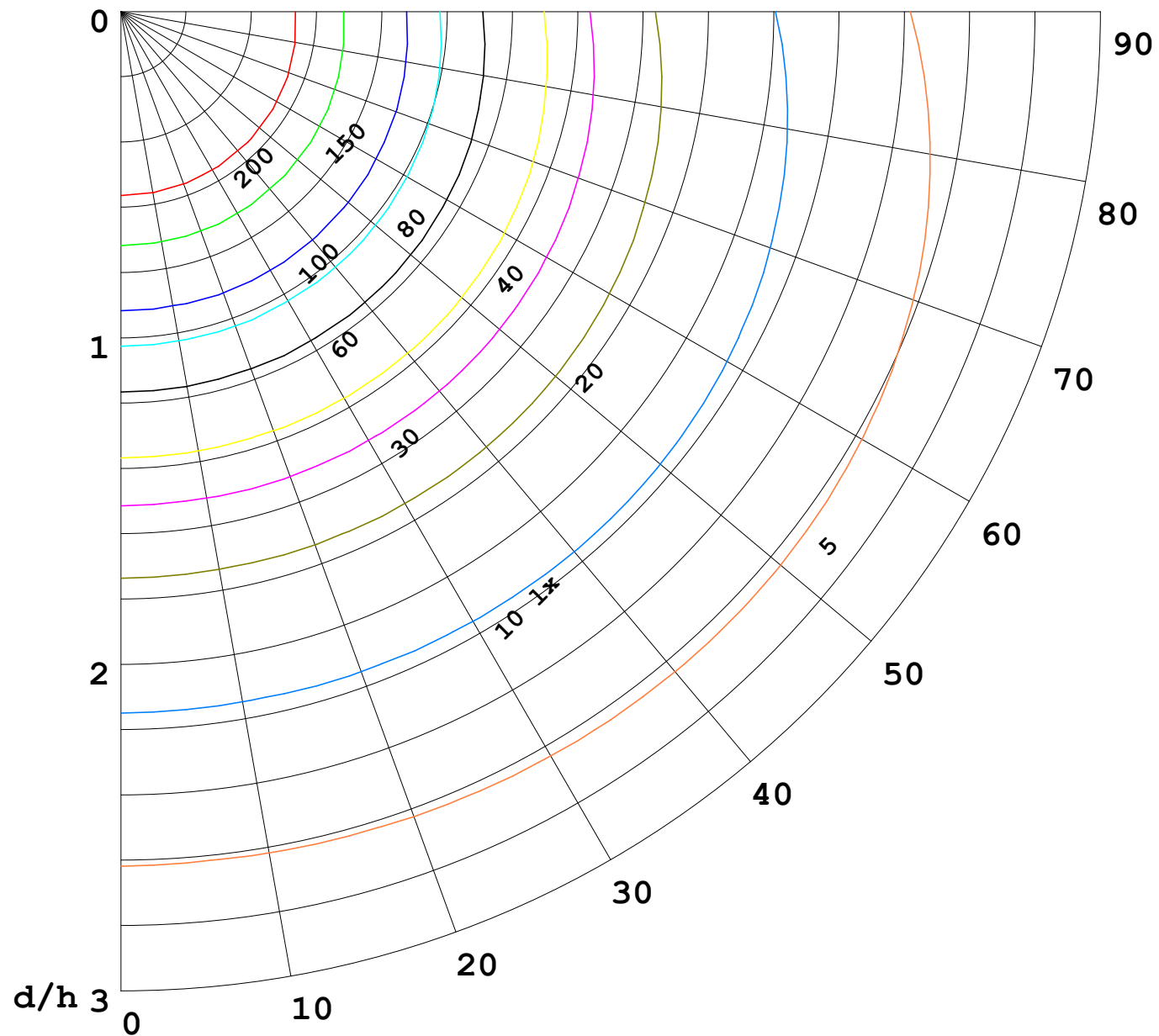
γ Range: 0 - 120DEG
γ Interval: 1.0DEG
Test System: EVERFINE GO-2000B_V1 SYSTEM V2.0.362
Humidity: 65.0%
Test Distance: 9.200m [K=1.0000]
Remarks:

I (cd)



1000 lm

$\kappa = 1$



F = 5000 lm
 K = 0.7
 Hcc = 0.0 m
 Hfc = 0.0 m
 Eave = 100 lx

	Pcc	Pw	Pfc
—	70	50	30
—	50	30	20

