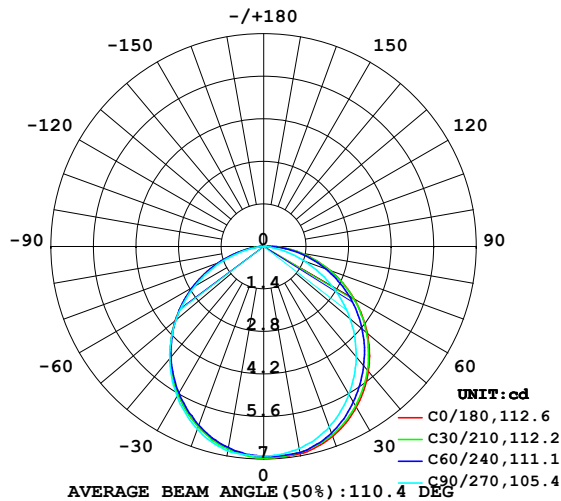


## LUMINAIRE PHOTOMETRIC TEST REPORT

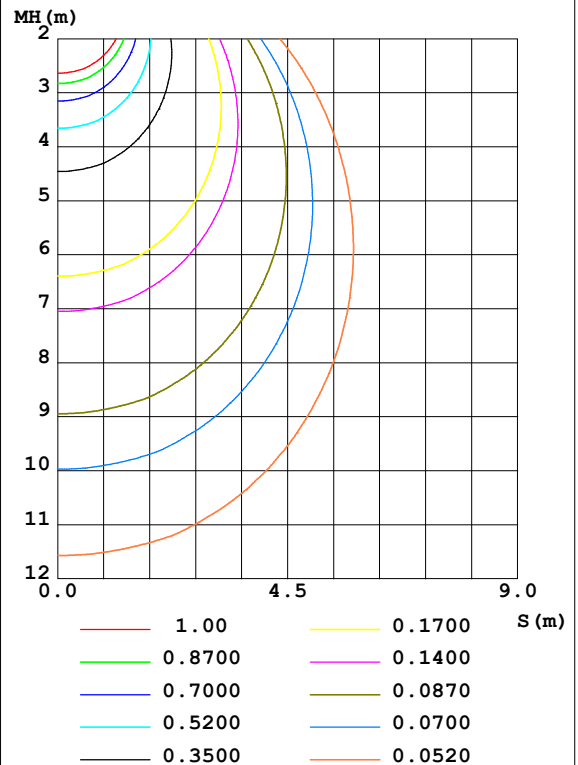
Test:U:24.00V I:0.2361A P:5.666W PF:1.000 Freq:50.00Hz Lamp Flux:19.7322x1 lm		
NAME: SF15-24V-5050-72-RGB-B	TYPE: 硅胶	WEIGHT:
SPEC.:	DIM.: 21mm*11.5mm	SERIAL No.:2021122707
MFR.: OLYMPIA	SUR.:1*0.0115	Shielding Angle:

DATA OF LAMP		PHOTOMETRIC DATA				Eff: 3.48 lm/W
MODEL	5050	I <sub>max</sub> (cd)	6.966	S/MH (C0/180)	1.21	
NOMINAL POWER (W)	4.3	LOR (%)	100.0	S/MH (C90/270)	1.23	
RATED VOLTAGE (V)	24	TOTAL FLUX (lm)	19.732	η UP, DN (C0-180)	0.5, 49.8	
NOMINAL FLUX (lm)	19.7322	CIE CLASS	DIRECT	η UP, DN (C180-360)	0.3, 49.4	
LAMPS INSIDE	1	η up (%)	0.8	CIBSE SHR NOM	1.25	
TEST VOLTAGE (V)	24	η down (%)	99.2	CIBSE SHR MAX	1.35	

LUMINOUS INTENSITY DISTRIBUTION DIAGRAM



C0 PLANE ISOLUX DIAGRAM (UNIT:lx)



C Range: 0 - 360DEG  
C Interval: 30.0DEG  
Test Speed: HIGH  
Temperature: 25.3DEG  
Operators: LPC  
Test Date: 2021-12-27

γ Range: 0 - 120DEG  
γ Interval: 1.0DEG  
Test System: EVERFINE GO-2000B\_V1 SYSTEM V2.0.362  
Humidity: 65.0%  
Test Distance: 9.200m [K=1.0000]  
Remarks:

## ZONAL FLUX DIAGRAM

## ZONAL FLUX DIAGRAM:

$\gamma$	C0	C45	C90	C135	C180	C225	C270	C315	$\gamma$	$\Phi$ zone	$\Phi$ total	%lum, lamp
10	6.926	6.885	6.749	6.689	6.734	6.740	6.830	6.908	0- 10	0.6553	0.6553	3.32,3.32
20	6.649	6.566	6.312	6.199	6.292	6.282	6.393	6.604	10- 20	1.875	2.530	12.8,12.8
30	6.102	5.983	5.618	5.503	5.628	5.609	5.700	6.068	20- 30	2.821	5.351	27.1,27.1
40	5.363	5.217	4.743	4.641	4.788	4.767	4.811	5.352	30- 40	3.375	8.726	44.2,44.2
50	4.454	4.320	3.718	3.656	3.808	3.789	3.776	4.488	40- 50	3.480	12.21	61.9,61.9
60	3.434	3.322	2.587	2.576	2.713	2.701	2.619	3.493	50- 60	3.131	15.34	77.7,77.7
70	2.333	2.252	1.451	1.480	1.592	1.583	1.463	2.405	60- 70	2.383	17.72	89.8,89.8
80	1.237	1.186	0.3962	0.4977	0.5972	0.5552	0.3878	1.312	70- 80	1.392	19.11	96.9,96.9
90	0.3524	0.2690	0.0201	0.0679	0.0451	0.0579	0	0.3267	80- 90	0.4602	19.57	99.2,99.2
100	0.0554	0.0528	0.0302	0.0628	0.0302	0.0302	0	0.0202	90-100	0.0818	19.65	99.6,99.6
110	0.0402	0.0603	0.0402	0.0553	0.0352	0.0352	0	0.0126	100-110	0.0383	19.69	99.8,99.8
120	0	0.0503	0.0452	0.0628	0.0352	0.0377	0	0.0126	110-120	0.0379	19.73	100,100
130	0	0	0	0	0	0	0	0	120-130	0.0016	19.73	100,100
140	0	0	0	0	0	0	0	0	130-140	0	19.73	100,100
150	0	0	0	0	0	0	0	0	140-150	0	19.73	100,100
160	0	0	0	0	0	0	0	0	150-160	0	19.73	100,100
170	0	0	0	0	0	0	0	0	160-170	0	19.73	100,100
180	0	0	0	0	0	0	0	0	170-180	0	19.73	100,100
DEG	LUMINOUS INTENSITY:cd									UNIT:lm		

Conical surface Flux(90deg): 10.481 lm

%lum = 53.1%

%lamp = 53.1%

Conical surface Flux(120deg): 15.337 lm

%lum = 77.7%

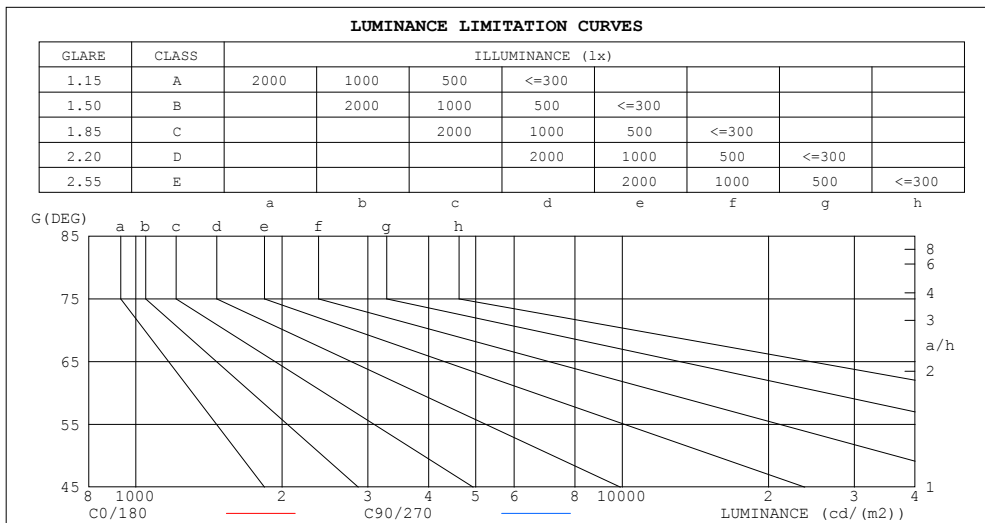
%lamp = 77.7%

C Range: 0 - 360DEG  
 C Interval: 30.0DEG  
 Test Speed: HIGH  
 Temperature:25.3DEG  
 Operators:LPC  
 Test Date:2021-12-27

$\gamma$  Range: 0 - 120DEG  
 $\gamma$  Interval: 1.0DEG  
 Test System:EVERFINE GO-2000B\_V1 SYSTEM V2.0.362  
 Humidity:65.0%  
 Test Distance:9.200m [K=1.0000]  
 Remarks:

## LUMINANCE LIMITATION CURVES

Test:U:24.00V I:0.2361A P:5.666W PF:1.000 Freq:50.00Hz Lamp Flux:19.7322x1 lm		
NAME: SF15-24V-5050-72-RGB-B	TYPE: 硅胶	WEIGHT:
SPEC.:	DIM.: 21mm*11.5mm	SERIAL No.:2021122707
MFR.: OLYMPIA	SUR.:1*0.0115	Shielding Angle:



LUMINANCE cd/(m2)		
G (DEG)	C0/180	C90/270
85	728	20
80	620	198
75	596	305
70	593	369
65	594	415
60	597	450
55	600	478
50	603	503
45	606	522

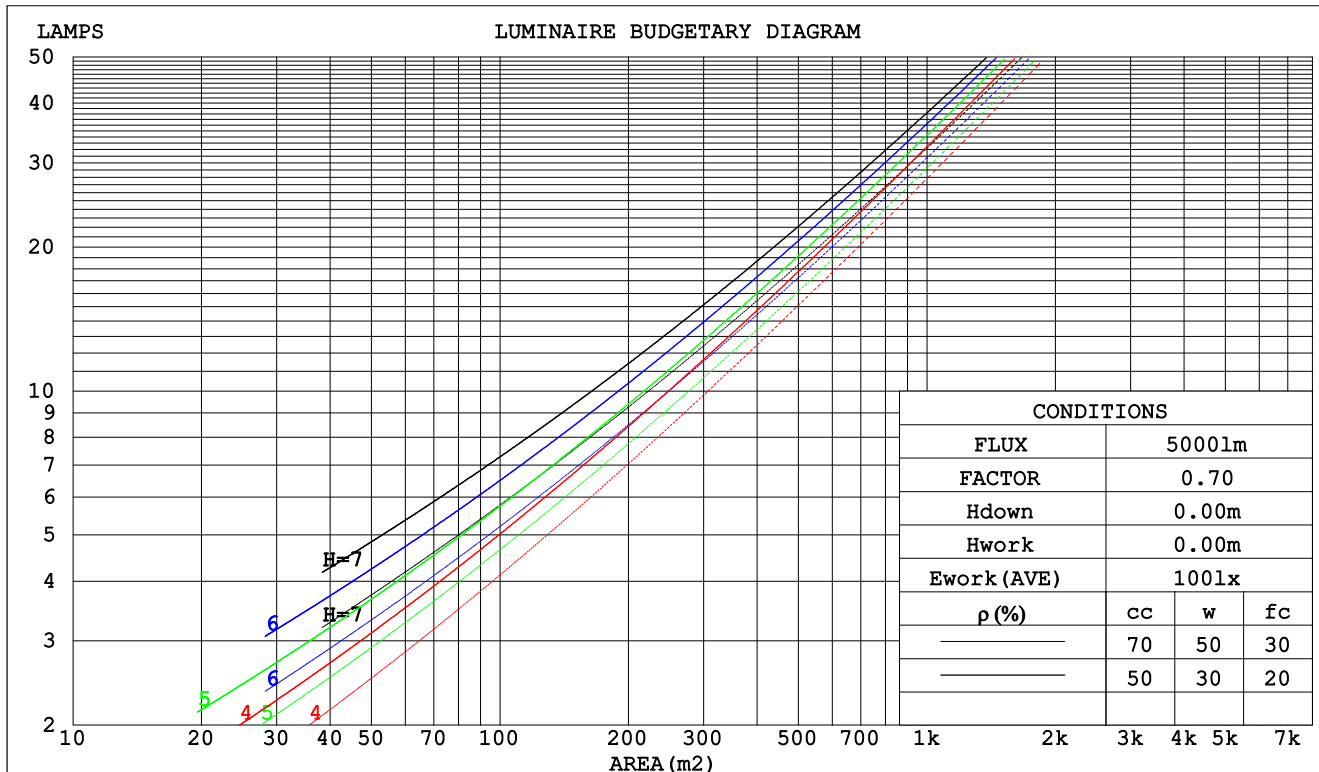
C Range: 0 - 360DEG  
C Interval: 30.0DEG  
Test Speed: HIGH  
Temperature:25.3DEG  
Operators:LPC  
Test Date:2021-12-27

$\gamma$  Range: 0 - 120DEG  
 $\gamma$  Interval: 1.0DEG  
Test System:EVERFINE GO-2000B\_V1 SYSTEM V2.0.362  
Humidity:65.0%  
Test Distance:9.200m [K=1.0000]  
Remarks:

## CU AND LUMINAIRE BUDGETARY ESTIMATE DIAGRAM

Test:U:24.00V I:0.2361A P:5.666W PF:1.000 Freq:50.00Hz Lamp Flux:19.7322x1 lm		
NAME: SF15-24V-5050-72-RGB-B	TYPE: 硅胶	WEIGHT:
SPEC.:	DIM.: 21mm*11.5mm	SERIAL No.:2021122707
MFR.: OLYMPIA	SUR.:1*0.0115	Shielding Angle:

pcc	80%			70%			50%			30%			10%			0
pw	50%	30%	10%	50%	30%	10%	50%	30%	10%	50%	30%	10%	50%	30%	10%	0
pfc	20%			20%			20%			20%			20%			0
RCR	Coefficients of Utilization(CU)															
	RCR:Room Cavity Ratio															
0.0	1.19	1.19	1.19	1.16	1.16	1.16	1.11	1.11	1.11	1.06	1.06	1.06	1.01	1.01	1.01	.99
1.0	1.03	.99	.95	1.01	.97	.94	.97	.93	.90	.93	.90	.87	.89	.87	.85	.83
2.0	.90	.83	.77	.88	.82	.76	.84	.79	.74	.81	.77	.73	.78	.74	.71	.69
3.0	.79	.71	.64	.77	.70	.64	.74	.68	.62	.71	.66	.61	.69	.64	.60	.58
4.0	.70	.61	.54	.69	.60	.54	.66	.59	.53	.64	.57	.52	.61	.56	.51	.49
5.0	.63	.53	.47	.61	.53	.46	.59	.52	.46	.57	.50	.45	.55	.49	.45	.43
6.0	.56	.47	.41	.55	.47	.41	.53	.46	.40	.52	.45	.40	.50	.44	.39	.37
7.0	.51	.42	.36	.50	.42	.36	.49	.41	.36	.47	.40	.35	.46	.40	.35	.33
8.0	.47	.38	.32	.46	.38	.32	.44	.37	.32	.43	.36	.32	.42	.36	.31	.29
9.0	.43	.34	.29	.42	.34	.29	.41	.34	.29	.40	.33	.28	.39	.33	.28	.26
10.0	.39	.31	.26	.39	.31	.26	.38	.31	.26	.37	.30	.26	.36	.30	.26	.24



C Range: 0 - 360DEG  
 C Interval: 30.0DEG  
 Test Speed: HIGH  
 Temperature:25.3DEG  
 Operators:LPC  
 Test Date:2021-12-27

$\gamma$  Range: 0 - 120DEG  
 $\gamma$  Interval: 1.0DEG  
 Test System:EVERFINE GO-2000B\_V1 SYSTEM V2.0.362  
 Humidity:65.0%  
 Test Distance:9.200m [K=1.0000]  
 Remarks:

## WEC AND CCEC

Test:U:24.00V I:0.2361A P:5.666W PF:1.000 Freq:50.00Hz Lamp Flux:19.7322x1 lm		
NAME: SF15-24V-5050-72-RGB-B	TYPE: 硅胶	WEIGHT:
SPEC.:	DIM.: 21mm*11.5mm	SERIAL No.:2021122707
MFR.: OLYMPIA	SUR.:1*0.0115	Shielding Angle:

pcc	80%			70%			50%			30%			10%			0
pw	50%	30%	10%	50%	30%	10%	50%	30%	10%	50%	30%	10%	50%	30%	10%	0
pfc	20%			20%			20%			20%			20%			0
RCR	RCR:Room Cavity Ratio						Wall Exitance Coeffcients (WEC)									
0.0																
1.0	.314	.179	.057	.307	.175	.056	.293	.168	.054	.280	.162	.052	.269	.156	.050	
2.0	.293	.161	.049	.287	.158	.049	.275	.153	.047	.264	.148	.046	.253	.143	.045	
3.0	.271	.144	.043	.265	.142	.043	.254	.138	.042	.244	.134	.041	.235	.130	.040	
4.0	.250	.130	.038	.244	.128	.038	.235	.125	.037	.226	.121	.037	.218	.118	.036	
5.0	.230	.117	.034	.226	.116	.034	.217	.113	.033	.210	.111	.033	.202	.108	.032	
6.0	.214	.107	.031	.210	.106	.030	.202	.104	.030	.195	.101	.030	.188	.099	.029	
7.0	.199	.098	.028	.195	.097	.028	.188	.095	.027	.182	.093	.027	.176	.091	.027	
8.0	.186	.091	.025	.182	.090	.025	.176	.088	.025	.171	.086	.025	.165	.085	.025	
9.0	.174	.084	.023	.171	.083	.023	.166	.082	.023	.160	.080	.023	.155	.079	.023	
10.0	.163	.078	.022	.161	.078	.022	.156	.076	.022	.151	.075	.021	.147	.074	.021	

pcc	80%			70%			50%			30%			10%			0
pw	50%	30%	10%	50%	30%	10%	50%	30%	10%	50%	30%	10%	50%	30%	10%	0
pfc	20%			20%			20%			20%			20%			0
RCR	RCR:Room Cavity Ratio						Ceiling Cavity Exitance Coefficients(CCEC)									
0.0	.197	.197	.197	.168	.168	.168	.115	.115	.115	.066	.066	.066	.021	.021	.021	
1.0	.187	.162	.140	.160	.139	.121	.109	.096	.083	.063	.055	.049	.020	.018	.016	
2.0	.179	.138	.104	.153	.119	.090	.105	.082	.063	.060	.048	.037	.019	.015	.012	
3.0	.171	.121	.080	.147	.104	.070	.101	.072	.049	.058	.042	.029	.019	.014	.009	
4.0	.163	.107	.065	.140	.093	.056	.096	.065	.040	.056	.038	.023	.018	.012	.008	
5.0	.156	.097	.053	.134	.084	.047	.092	.059	.033	.053	.034	.019	.017	.011	.006	
6.0	.149	.089	.046	.128	.077	.040	.088	.054	.028	.051	.032	.017	.016	.010	.006	
7.0	.142	.082	.040	.122	.071	.035	.084	.050	.024	.049	.029	.015	.016	.010	.005	
8.0	.135	.076	.035	.116	.066	.031	.081	.046	.022	.047	.027	.013	.015	.009	.004	
9.0	.129	.071	.032	.111	.062	.028	.077	.043	.020	.045	.026	.012	.015	.008	.004	
10.0	.123	.067	.029	.106	.058	.025	.074	.041	.018	.043	.024	.011	.014	.008	.004	

C Range: 0 - 360DEG  
 C Interval: 30.0DEG  
 Test Speed: HIGH  
 Temperature:25.3DEG  
 Operators:LPC  
 Test Date:2021-12-27

γ Range: 0 - 120DEG  
 γ Interval: 1.0DEG  
 Test System:EVERFINE GO-2000B\_V1 SYSTEM V2.0.362  
 Humidity:65.0%  
 Test Distance:9.200m [K=1.0000]  
 Remarks:

UGR(Unified Glare Rating) Table

Test:U:24.00V I:0.2361A P:5.666W PF:1.000 Freq:50.00Hz Lamp Flux:19.7322x1 lm											
NAME: SF15-24V-5050-72-RGB-B					TYPE:硅胶			WEIGHT:			
SPEC.:					DIM.: 21mm*11.5mm			SERIAL No.:2021122707			
MFR.: OLYMPIA					SUR.:1*0.0115			Shielding Angle:			
ceiling/cavity	0.7	0.7	0.5	0.5	0.3	0.7	0.7	0.5	0.5	0.3	
walls	0.5	0.3	0.5	0.3	0.3	0.5	0.3	0.5	0.3	0.3	
working plane	0.2	0.2	0.2	0.2	0.2	0.2	0.2	0.2	0.2	0.2	
Room dimensions		Viewed crosswise				Viewed endwise					
x = 2H y = 2H	25.1	26.6	25.4	26.8	27.0	24.2	25.8	24.5	26.0	26.2	
	3H	26.9	28.3	27.2	28.5	28.8	25.6	27.0	25.9	27.2	27.5
	4H	27.6	29.0	28.0	29.2	29.5	26.0	27.4	26.4	27.6	27.9
	6H	28.3	29.6	28.7	29.9	30.2	26.3	27.5	26.6	27.8	28.1
	8H	28.6	29.8	29.0	30.1	30.5	26.3	27.5	26.6	27.8	28.1
	12H	28.9	30.1	29.3	30.4	30.7	26.3	27.4	26.6	27.7	28.1
4H	2H	25.7	27.0	26.0	27.3	27.6	25.1	26.4	25.4	26.7	27.0
	3H	27.7	28.9	28.1	29.2	29.5	26.7	27.9	27.1	28.2	28.5
	4H	28.6	29.7	29.0	30.0	30.4	27.4	28.5	27.8	28.8	29.1
	6H	29.5	30.5	29.9	30.8	31.2	27.8	28.7	28.2	29.1	29.5
	8H	29.9	30.8	30.3	31.1	31.5	27.9	28.8	28.3	29.1	29.5
	12H	30.2	31.0	30.7	31.4	31.8	27.9	28.7	28.3	29.1	29.5
8H	4H	29.0	29.9	29.4	30.2	30.6	27.9	28.8	28.3	29.2	29.6
	6H	30.0	30.8	30.5	31.2	31.6	28.6	29.3	29.1	29.8	30.2
	8H	30.5	31.2	31.0	31.6	32.1	28.8	29.5	29.3	29.9	30.4
	12H	31.0	31.6	31.5	32.1	32.5	28.9	29.5	29.4	30.0	30.5
12H	4H	29.0	29.8	29.4	30.2	30.6	28.0	28.8	28.4	29.2	29.6
	6H	30.1	30.8	30.6	31.2	31.7	28.8	29.4	29.3	29.9	30.3
	8H	30.7	31.3	31.2	31.7	32.2	29.1	29.7	29.6	30.1	30.6
Variations with the observer position at spacings:											
S = 1.0H	+ 0.1 / - 0.2					+ 0.2 / - 0.2					
1.5H	+ 0.2 / - 0.3					+ 0.3 / - 0.4					
2.0H	+ 0.1 / - 0.3					+ 0.2 / - 0.5					

CIE Pub.117, 19.73 lm Total Lamp Luminous Flux Correct (8log(F/F0) = -13.6)

C Range: 0 - 360DEG  
 C Interval: 30.0DEG  
 Test Speed: HIGH  
 Temperature:25.3DEG  
 Operators:LPC  
 Test Date:2021-12-27

γ Range: 0 - 120DEG  
 γ Interval: 1.0DEG  
 Test System:EVERFINE GO-2000B\_V1 SYSTEM V2.0.362  
 Humidity:65.0%  
 Test Distance:9.200m [K=1.0000]  
 Remarks:

## UTILIZATION FACTORS TABLE

Test:U:24.00V I:0.2361A P:5.666W PF:1.000 Freq:50.00Hz Lamp Flux:19.7322x1 lm		
NAME: SF15-24V-5050-72-RGB-B	TYPE: 硅胶	WEIGHT:
SPEC.:	DIM.: 21mm*11.5mm	SERIAL No.:2021122707
MFR.: OLYMPIA	SUR.:1*0.0115	Shielding Angle:

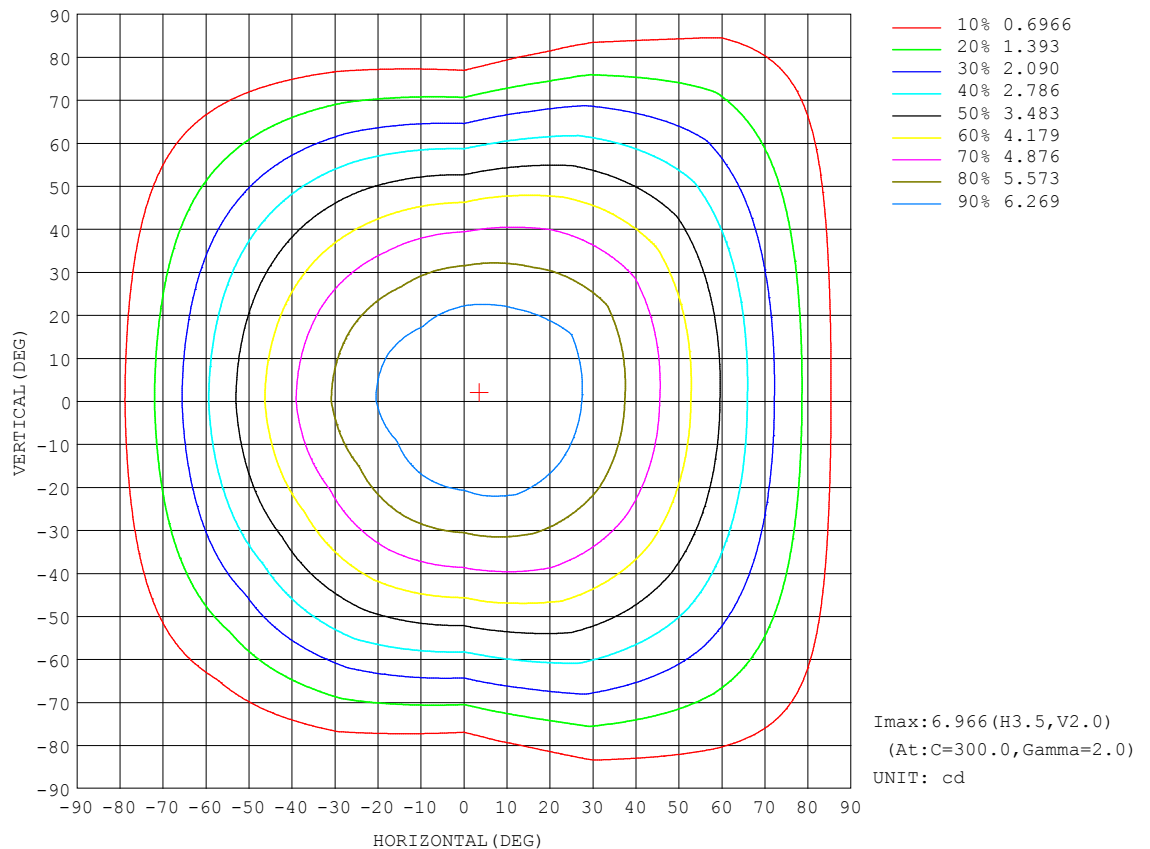
REFLECTANCE										
Ceiling	0.8	0.8	0.8	0.7	0.7	0.7	0.5	0.5	0.5	0
Walls	0.7	0.5	0.3	0.7	0.5	0.3	0.7	0.5	0.3	0
Working plane	0.2	0.2	0.2	0.2	0.2	0.2	0.2	0.2	0.2	0
ROOM INDEX	UTILIZATION FACTORS (PERCENT) $k(RI) \times RCR = 5$									
$k = 0.60$	57	46	39	56	45	39	55	45	38	32
0.80	67	56	48	66	55	48	64	54	48	41
1.00	76	64	57	74	64	57	72	65	56	49
1.25	83	72	65	81	71	64	78	70	64	56
1.50	88	78	71	86	77	70	83	75	69	61
2.00	94	86	79	93	85	78	89	82	77	69
2.50	98	90	84	96	89	83	92	86	81	73
3.00	102	95	89	100	93	88	95	90	86	77
4.00	106	100	95	103	98	94	99	95	91	82
5.00	108	103	99	106	101	97	101	98	94	85
ROOM INDEX	UF (total)									Direct
According to DIN EN 13032-2 2004			Suspended					SHRNOM = 1.25		

C Range: 0 - 360DEG  
 C Interval: 30.0DEG  
 Test Speed: HIGH  
 Temperature: 25.3DEG  
 Operators: LPC  
 Test Date: 2021-12-27

γ Range: 0 - 120DEG  
 γ Interval: 1.0DEG  
 Test System: EVERFINE GO-2000B\_V1 SYSTEM V2.0.362  
 Humidity: 65.0%  
 Test Distance: 9.200m [K=1.0000]  
 Remarks:

## ISOCANDELA DIAGRAM

Test:U:24.00V I:0.2361A P:5.666W PF:1.000 Freq:50.00Hz Lamp Flux:19.7322x1 lm		
NAME: SF15-24V-5050-72-RGB-B	TYPE: 硅胶	WEIGHT:
SPEC.:	DIM.: 21mm*11.5mm	SERIAL No.:2021122707
MFR.: OLYMPIA	SUR.:1*0.0115	Shielding Angle:



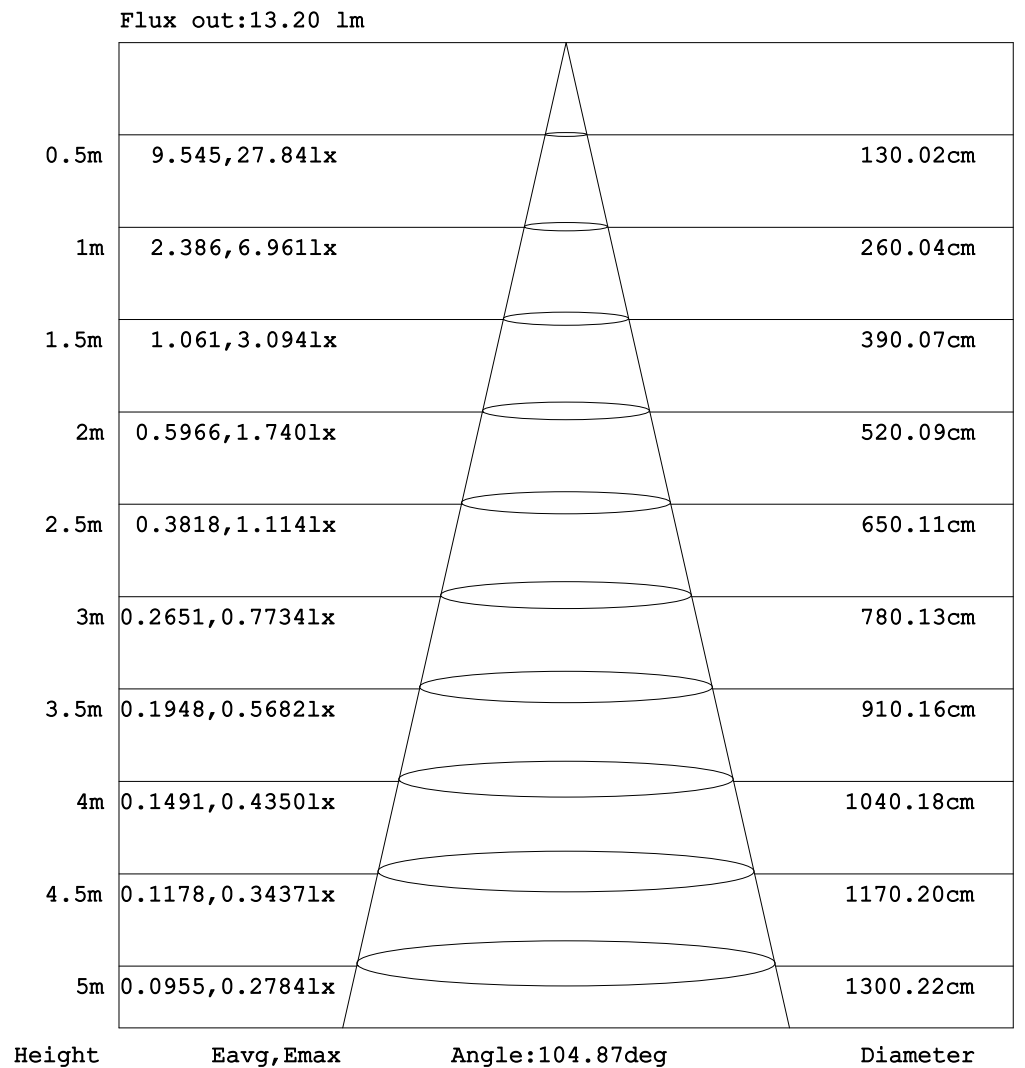
C Range: 0 - 360DEG  
C Interval: 30.0DEG  
Test Speed: HIGH  
Temperature: 25.3DEG  
Operators: LPC  
Test Date: 2021-12-27

$\gamma$  Range: 0 - 120DEG  
 $\gamma$  Interval: 1.0DEG  
Test System: EVERFINE GO-2000B\_V1 SYSTEM V2.0.362  
Humidity: 65.0%  
Test Distance: 9.200m [K=1.0000]  
Remarks:



## AAI Figure

Test:U:24.00V I:0.2361A P:5.666W PF:1.000 Freq:50.00Hz Lamp Flux:19.7322x1 lm		
NAME: SF15-24V-5050-72-RGB-B	TYPE: 硅胶	WEIGHT:
SPEC.:	DIM.: 21mm*11.5mm	SERIAL No.:2021122707
MFR.: OLYMPIA	SUR.:1*0.0115	Shielding Angle:



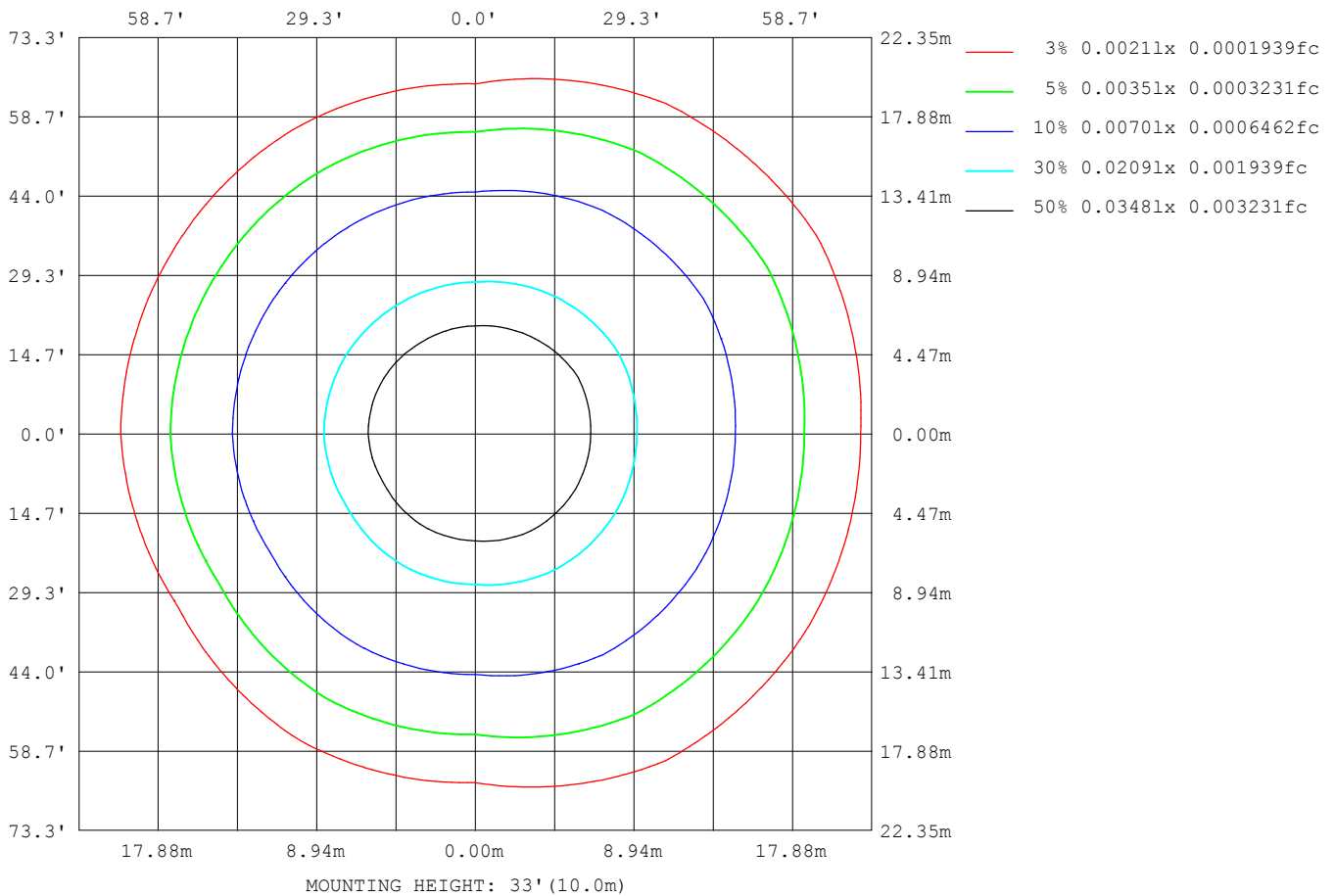
Note: The Curves indicate the illuminated area and the average illumination when the luminaire is at different distance.

C Range: 0 - 360DEG  
 C Interval: 30.0DEG  
 Test Speed: HIGH  
 Temperature: 25.3DEG  
 Operators: LPC  
 Test Date: 2021-12-27

γ Range: 0 - 120DEG  
 γ Interval: 1.0DEG  
 Test System: EVERFINE GO-2000B\_V1 SYSTEM V2.0.362  
 Humidity: 65.0%  
 Test Distance: 9.200m [K=1.0000]  
 Remarks:

## ISOLUX DIAGRAM

Test:U:24.00V I:0.2361A P:5.666W PF:1.000 Freq:50.00Hz Lamp Flux:19.7322x1 lm		
NAME: SF15-24V-5050-72-RGB-B	TYPE: 硅胶	WEIGHT:
SPEC.:	DIM.: 21mm*11.5mm	SERIAL No.:2021122707
MFR.: OLYMPIA	SUR.:1*0.0115	Shielding Angle:



C Range: 0 - 360DEG  
C Interval: 30.0DEG  
Test Speed: HIGH  
Temperature:25.3DEG  
Operators:LPC  
Test Date:2021-12-27

$\gamma$  Range: 0 - 120DEG  
 $\gamma$  Interval: 1.0DEG  
Test System:EVERFINE GO-2000B\_V1 SYSTEM V2.0.362  
Humidity:65.0%  
Test Distance:9.200m [K=1.0000]  
Remarks:

## LED Avg.L Report

Test:U:24.00V I:0.2361A P:5.666W PF:1.000 Freq:50.00Hz Lamp Flux:19.7322x1 lm		
NAME: SF15-24V-5050-72-RGB-B	TYPE:硅胶	WEIGHT:
SPEC.:	DIM.: 21mm*11.5mm	SERIAL No.:2021122707
MFR.: OLYMPIA	SUR.:1*0.0115	Shielding Angle:

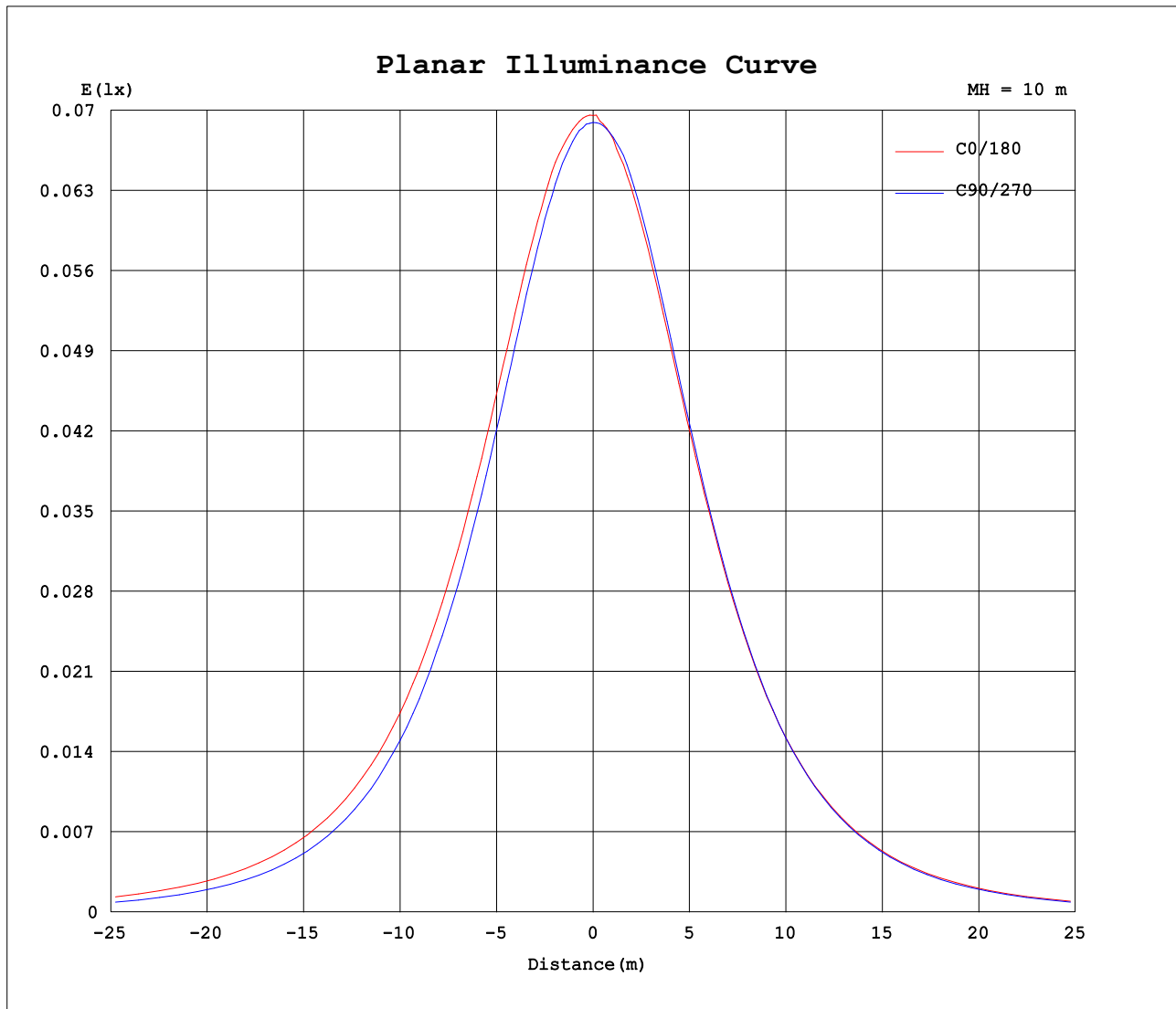
AvgL	cd/m2
L_0~180 (65) av	518
L_0~180 (75) av	478
L_0~180 (85) av	487
L_90~270 (65) av	417
L_90~270 (75) av	303
L_90~270 (85) av	18
L_45 (65) av	515
L_45 (75) av	475
L_45 (85) av	480

Standard: GB/T 29293-2012

C Range: 0 - 360DEG  
C Interval: 30.0DEG  
Test Speed: HIGH  
Temperature:25.3DEG  
Operators:LPC  
Test Date:2021-12-27

γ Range: 0 - 120DEG  
γ Interval: 1.0DEG  
Test System:EVERFINE GO-2000B\_V1 SYSTEM V2.0.362  
Humidity:65.0%  
Test Distance:9.200m [K=1.0000]  
Remarks:

## Planar Illuminance Curve



C Range: 0 - 360DEG  
C Interval: 30.0DEG  
Test Speed: HIGH  
Temperature: 25.3DEG  
Operators: LPC  
Test Date: 2021-12-27

$\gamma$  Range: 0 - 120DEG  
 $\gamma$  Interval: 1.0DEG  
Test System: EVERFINE GO-2000B\_V1 SYSTEM V2.0.362  
Humidity: 65.0%  
Test Distance: 9.200m [K=1.0000]  
Remarks:

## LUMINOUS DISTRIBUTION INTENSITY DATA

Test:U:24.00V I:0.2361A P:5.666W PF:1.000 Freq:50.00Hz Lamp Flux:19.7322x1 lm		
NAME: SF15-24V-5050-72-RGB-B	TYPE: 硅胶	WEIGHT:
SPEC.:	DIM.: 21mm*11.5mm	SERIAL No.:2021122707
MFR.: OLYMPIA	SUR.:1*0.0115	Shielding Angle:

Table--1

UNIT: cd

C (DEG) γ (DEG)	0	30	60	90	120	150	180	210	240	270	300	330						
0	6.96	6.96	6.91	6.90	6.95	6.91	6.96	6.96	6.91	6.90	6.95	6.91						
5	6.95	6.94	6.91	6.86	6.87	6.80	6.88	6.90	6.86	6.88	6.93	6.96						
10	6.93	6.88	6.89	6.75	6.73	6.65	6.73	6.76	6.72	6.83	6.86	6.96						
15	6.82	6.77	6.74	6.57	6.52	6.43	6.55	6.59	6.53	6.65	6.71	6.87						
20	6.65	6.60	6.53	6.31	6.25	6.15	6.29	6.31	6.25	6.39	6.51	6.70						
25	6.41	6.35	6.25	5.99	5.93	5.82	5.99	6.00	5.94	6.07	6.24	6.48						
30	6.10	6.06	5.91	5.62	5.56	5.45	5.63	5.64	5.58	5.70	5.91	6.22						
35	5.76	5.70	5.53	5.20	5.16	5.02	5.23	5.23	5.19	5.28	5.56	5.90						
40	5.36	5.31	5.12	4.74	4.71	4.57	4.79	4.79	4.75	4.81	5.18	5.52						
45	4.93	4.87	4.69	4.25	4.24	4.09	4.31	4.30	4.29	4.30	4.79	5.11						
50	4.45	4.41	4.23	3.72	3.75	3.57	3.81	3.79	3.79	3.78	4.33	4.65						
55	3.96	3.92	3.75	3.16	3.22	3.03	3.27	3.26	3.26	3.21	3.84	4.16						
60	3.43	3.41	3.24	2.59	2.67	2.48	2.71	2.69	2.71	2.62	3.34	3.65						
65	2.89	2.87	2.71	2.02	2.12	1.92	2.15	2.13	2.15	2.03	2.79	3.12						
70	2.33	2.33	2.18	1.45	1.58	1.38	1.59	1.58	1.59	1.46	2.25	2.56						
75	1.78	1.77	1.64	0.91	1.05	0.85	1.07	1.04	1.04	0.90	1.68	2.00						
80	1.24	1.24	1.13	0.40	0.56	0.43	0.60	0.57	0.54	0.39	1.16	1.46						
85	0.73	0.72	0.63	0.02	0.21	0.15	0.25	0.24	0.15	0.02	0.62	0.93						
90	0.35	0.30	0.24	0.02	0.08	0.06	0.05	0.08	0.04	0.00	0.20	0.46						
95	0.15	0.11	0.09	0.03	0.08	0.06	0.03	0.05	0.03	0.00	0.00	0.18						
100	0.06	0.06	0.05	0.03	0.07	0.06	0.03	0.04	0.03	0.00	0.00	0.04						
105	0.04	0.06	0.06	0.04	0.06	0.06	0.04	0.04	0.03	0.00	0.00	0.03						
110	0.04	0.06	0.06	0.04	0.06	0.06	0.04	0.04	0.04	0.00	0.00	0.03						
115	0.04	0.06	0.06	0.05	0.07	0.06	0.04	0.04	0.04	0.00	0.00	0.03						
120	0.00	0.05	0.05	0.05	0.07	0.06	0.04	0.04	0.04	0.00	0.00	0.03						
125	0.00	0.00	0.00	0.00	0.00	0.00	0.00	0.00	0.00	0.00	0.00	0.00						
130	0.00	0.00	0.00	0.00	0.00	0.00	0.00	0.00	0.00	0.00	0.00	0.00						
135	0.00	0.00	0.00	0.00	0.00	0.00	0.00	0.00	0.00	0.00	0.00	0.00						
140	0.00	0.00	0.00	0.00	0.00	0.00	0.00	0.00	0.00	0.00	0.00	0.00						
145	0.00	0.00	0.00	0.00	0.00	0.00	0.00	0.00	0.00	0.00	0.00	0.00						
150	0.00	0.00	0.00	0.00	0.00	0.00	0.00	0.00	0.00	0.00	0.00	0.00						
155	0.00	0.00	0.00	0.00	0.00	0.00	0.00	0.00	0.00	0.00	0.00	0.00						
160	0.00	0.00	0.00	0.00	0.00	0.00	0.00	0.00	0.00	0.00	0.00	0.00						
165	0.00	0.00	0.00	0.00	0.00	0.00	0.00	0.00	0.00	0.00	0.00	0.00						
170	0.00	0.00	0.00	0.00	0.00	0.00	0.00	0.00	0.00	0.00	0.00	0.00						
175	0.00	0.00	0.00	0.00	0.00	0.00	0.00	0.00	0.00	0.00	0.00	0.00						
180	0.00	0.00	0.00	0.00	0.00	0.00	0.00	0.00	0.00	0.00	0.00	0.00						

C Range: 0 - 360DEG  
C Interval: 30.0DEG  
Test Speed: HIGH  
Temperature:25.3DEG  
Operators:LPC  
Test Date:2021-12-27

γ Range: 0 - 120DEG  
γ Interval: 1.0DEG  
Test System:EVERFINE GO-2000B\_V1 SYSTEM V2.0.362  
Humidity:65.0%  
Test Distance:9.200m [K=1.0000]  
Remarks:

## Photometric Data Table [cd]

G/C	0.0	30.0	60.0	90.0	120.0	150.0	180.0	210.0	240.0	270.0
0.0	6.956	6.961	6.905	6.895	6.946	6.905	6.956	6.961	6.905	6.895
3.0	6.961	6.961	6.915	6.875	6.911	6.860	6.910	6.936	6.875	6.895
6.0	6.946	6.940	6.905	6.840	6.845	6.784	6.860	6.875	6.825	6.875
9.0	6.931	6.895	6.894	6.784	6.765	6.674	6.774	6.800	6.749	6.855
12.0	6.906	6.845	6.845	6.679	6.665	6.568	6.669	6.705	6.659	6.765
15.0	6.815	6.769	6.745	6.573	6.524	6.427	6.553	6.594	6.528	6.654
18.0	6.725	6.664	6.629	6.427	6.363	6.272	6.407	6.423	6.372	6.509
21.0	6.599	6.558	6.479	6.252	6.187	6.091	6.241	6.248	6.201	6.338
24.0	6.454	6.407	6.308	6.070	5.991	5.900	6.055	6.062	6.005	6.142
27.0	6.293	6.226	6.117	5.849	5.785	5.678	5.849	5.851	5.794	5.931
30.0	6.102	6.060	5.906	5.618	5.559	5.447	5.628	5.640	5.578	5.700
33.0	5.906	5.844	5.685	5.372	5.323	5.206	5.397	5.398	5.342	5.454
36.0	5.685	5.628	5.449	5.110	5.067	4.944	5.140	5.142	5.100	5.187
39.0	5.444	5.392	5.203	4.849	4.806	4.663	4.879	4.876	4.844	4.911
42.0	5.193	5.146	4.951	4.542	4.524	4.382	4.598	4.589	4.562	4.615
45.0	4.926	4.874	4.690	4.246	4.238	4.090	4.306	4.303	4.286	4.303
48.0	4.645	4.608	4.413	3.934	3.946	3.778	4.014	3.996	3.989	3.996
51.0	4.358	4.311	4.142	3.612	3.640	3.477	3.703	3.685	3.683	3.665
54.0	4.057	4.035	3.851	3.271	3.323	3.135	3.376	3.368	3.366	3.328
57.0	3.750	3.733	3.549	2.939	3.001	2.813	3.049	3.032	3.059	2.981
60.0	3.434	3.406	3.238	2.587	2.675	2.477	2.713	2.690	2.713	2.619
63.0	3.107	3.085	2.921	2.245	2.348	2.130	2.376	2.353	2.376	2.273
66.0	2.775	2.768	2.609	1.904	2.011	1.808	2.044	2.016	2.039	1.921
69.0	2.444	2.436	2.288	1.552	1.680	1.482	1.713	1.680	1.698	1.579
72.0	2.112	2.110	1.966	1.235	1.368	1.160	1.391	1.358	1.381	1.233
75.0	1.775	1.768	1.645	0.9088	1.051	0.8536	1.070	1.041	1.044	0.8957
78.0	1.459	1.451	1.338	0.5923	0.7448	0.5873	0.7681	0.7397	0.7377	0.5789
81.0	1.132	1.125	1.026	0.3058	0.4783	0.3612	0.5118	0.4982	0.4464	0.2873
84.0	0.8254	0.8281	0.7249	0.0798	0.2621	0.1905	0.3059	0.2972	0.2104	0.0510
87.0	0.5587	0.5270	0.4533	0.0151	0.1261	0.0852	0.1454	0.1611	0.0551	0.0000
90.0	0.3524	0.3012	0.2368	0.0201	0.0805	0.0553	0.0451	0.0805	0.0352	0
93.0	0.2114	0.1505	0.1159	0.0201	0.0754	0.0553	0.0302	0.0503	0.0301	0
96.0	0.1159	0.0603	0.0705	0.0251	0.0754	0.0553	0.0302	0.0452	0.0251	0
99.0	0.0655	0.0553	0.0503	0.0302	0.0704	0.0553	0.0302	0.0403	0.0251	0
102.0	0.0403	0.0553	0.0503	0.0402	0.0704	0.0553	0.0352	0.0352	0.0251	0
105.0	0.0402	0.0554	0.0552	0.0402	0.0553	0.0553	0.0352	0.0352	0.0251	0
108.0	0.0402	0.0603	0.0553	0.0402	0.0553	0.0553	0.0352	0.0352	0.0303	0
111.0	0.0402	0.0603	0.0603	0.0402	0.0553	0.0553	0.0352	0.0352	0.0352	0
114.0	0.0402	0.0603	0.0603	0.0452	0.0653	0.0553	0.0352	0.0352	0.0452	0
117.0	0.0402	0.0603	0.0603	0.0452	0.0653	0.0603	0.0352	0.0352	0.0402	0
120.0	0	0.0503	0.0503	0.0452	0.0653	0.0603	0.0352	0.0352	0.0402	0
G/C	300.0	330.0								
0.0	6.946	6.905								
3.0	6.961	6.965								
6.0	6.905	6.962								
9.0	6.870	6.958								
12.0	6.800	6.941								
15.0	6.709	6.865								
18.0	6.603	6.775								
21.0	6.458	6.655								
24.0	6.297	6.529								
27.0	6.106	6.378								
30.0	5.915	6.222								
33.0	5.693	6.031								
36.0	5.497	5.825								
39.0	5.266	5.600								
42.0	5.030	5.363								
45.0	4.789	5.107								
48.0	4.512	4.836								
51.0	4.226	4.554								
54.0	3.944	4.268								
57.0	3.643	3.966								
60.0	3.336	3.650								
63.0	3.009	3.333								
66.0	2.683	3.011								
69.0	2.346	2.675								
72.0	2.014	2.343								
75.0	1.678	2.001								
78.0	1.361	1.670								
81.0	1.039	1.353								
84.0	0.7226	1.026								
87.0	0.4364	0.7247								
90.0	0.1954	0.4581								

C Range: 0 - 360DEG  
 C Interval: 30.0DEG  
 Test Speed: HIGH  
 Temperature: 25.3DEG  
 Operators: LPC  
 Test Date: 2021-12-27

γ Range: 0 - 120DEG  
 γ Interval: 1.0DEG  
 Test System: EVERFINE GO-2000B\_V1 SYSTEM V2.0.362  
 Humidity: 65.0%  
 Test Distance: 9.200m [K=1.0000]  
 Remarks:

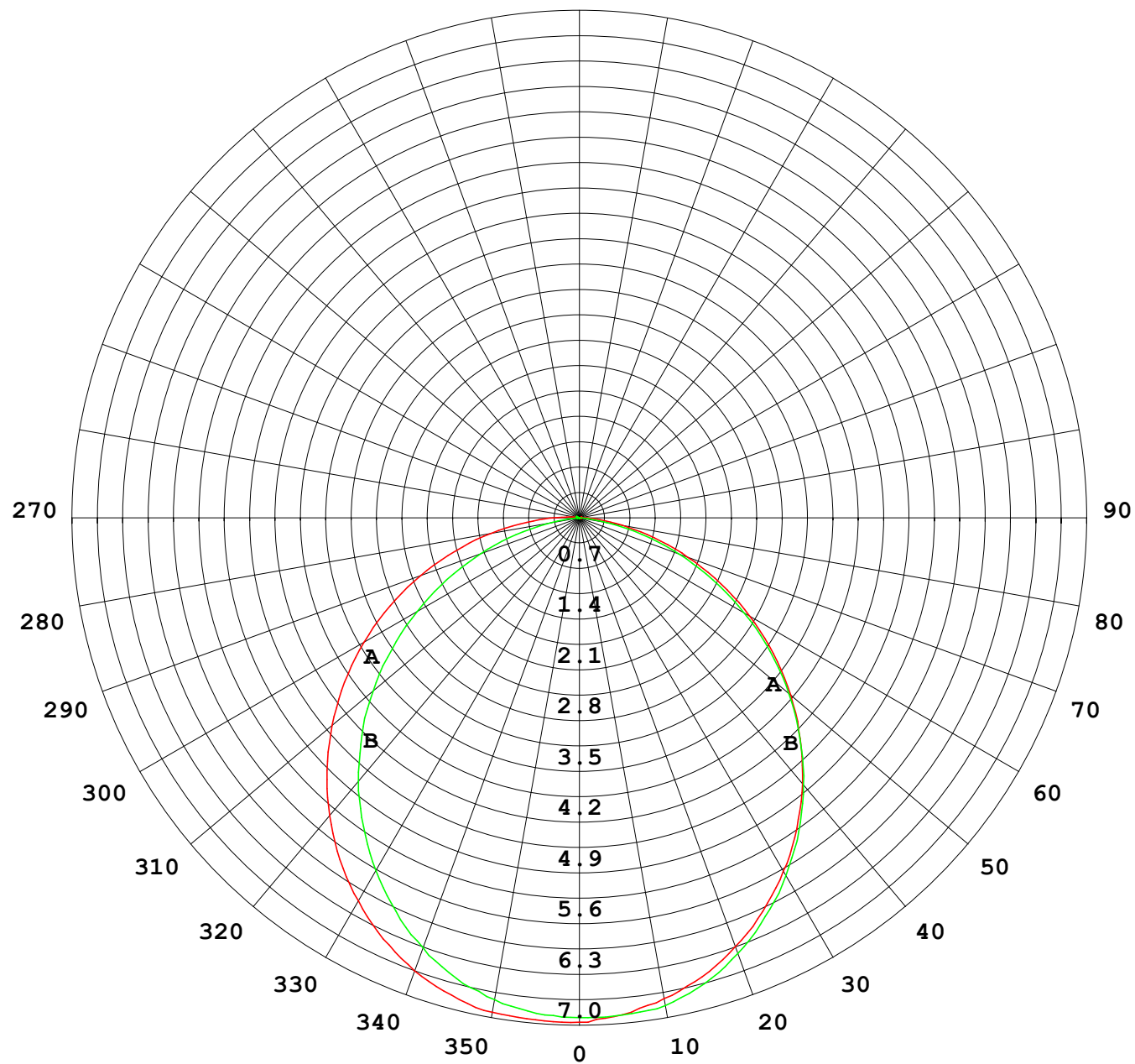
## Photometric Data Table [cd]

93.0	0.0451	0.2669
96.0	0	0.1411
99.0	0	0.0706
102.0	0	0.0302
105.0	0	0.0251
108.0	0	0.0251
111.0	0	0.0251
114.0	0	0.0251
117.0	0	0.0251
120.0	0	0.0251

C Range: 0 - 360DEG  
C Interval: 30.0DEG  
Test Speed: HIGH  
Temperature: 25.3DEG  
Operators: LPC  
Test Date: 2021-12-27

γ Range: 0 - 120DEG  
γ Interval: 1.0DEG  
Test System: EVERFINE GO-2000B\_V1 SYSTEM V2.0.362  
Humidity: 65.0%  
Test Distance: 9.200m [K=1.0000]  
Remarks:

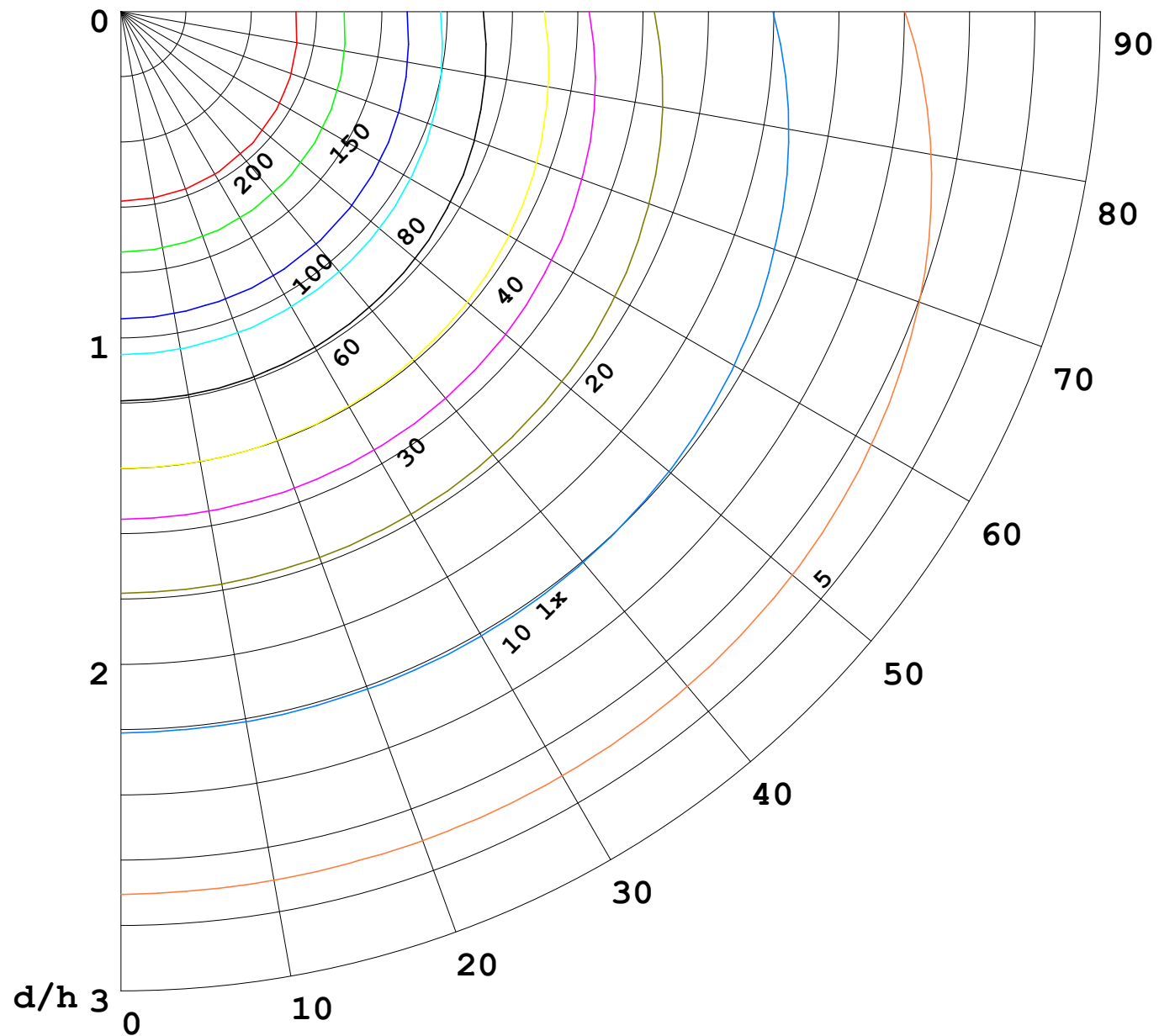
I (cd)





1000 lm

$\kappa = 1$



F = 5000 lm  
 K = 0.7  
 Hcc = 0.0 m  
 Hfc = 0.0 m  
 Eave = 100 lx

	Pcc	Pw	Pfc
—	70	50	30
—	50	30	20

