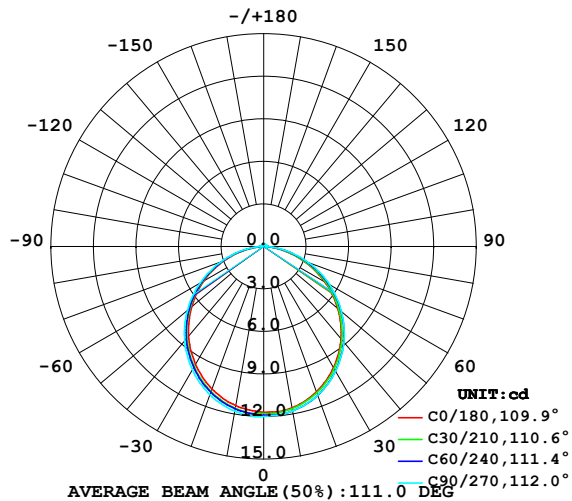


LUMINAIRE PHOTOMETRIC TEST REPORT

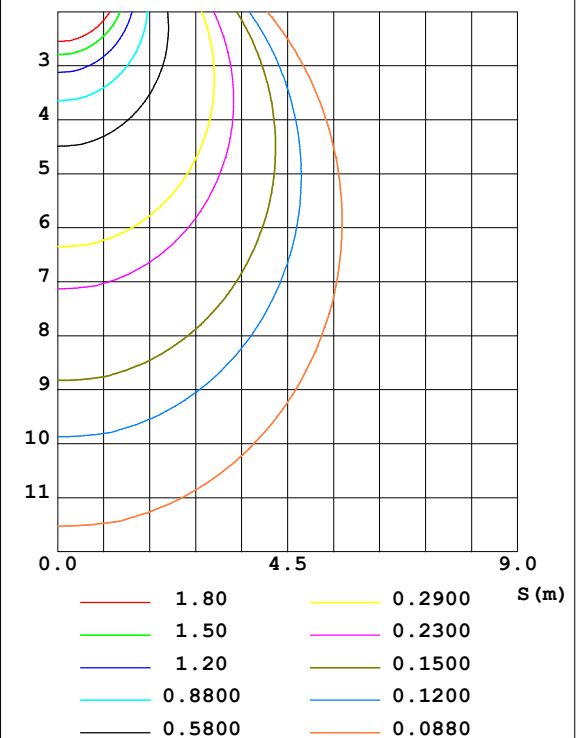
Test:U:24.00V I:0.1753A P:4.207W PF:1.000 Lamp Flux:34.2258x1 lm		
NAME: SF15-24V-5050-60-W12-RGB-R	TYPE: 硅胶	WEIGHT:
DIM.: 21MM*11.5MM	SPEC.:	SERIAL No.:202303002
MFR.: OLYMPIA	SUR.:1.0*0.0115	PROTECTION ANGLE:

DATA OF LAMP		PHOTOMETRIC DATA				Eff: 8.14 lm/W
MODEL	5050	I _{max} (cd)	12.09	S/MH (C0/180)	1.25	
NOMINAL POWER (W)	12	LOR (%)	100.0	S/MH (C90/270)	1.26	
RATED VOLTAGE (V)	24	TOTAL FLUX (lm)	34.226	η UP, DN (C0-180)	1.2, 49.4	
NOMINAL FLUX (lm)	34.2258	CIE CLASS	DIRECT	η UP, DN (C180-360)	1.0, 48.5	
LAMPS INSIDE	1	η up (%)	2.2	CIBSE SHR NOM	1.25	
TEST VOLTAGE (V)	24.0	η down (%)	97.8	CIBSE SHR MAX	1.35	

LUMINOUS INTENSITY DISTRIBUTION DIAGRAM



C0 PLANE ISOLUX DIAGRAM (UNIT:lx)



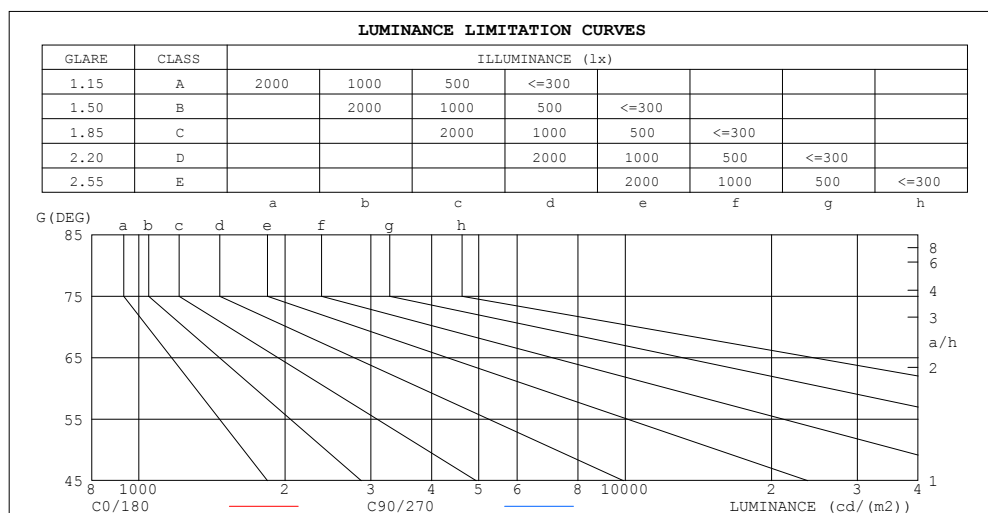
C Range: 0 - 360DEG
C Interval: 30.0DEG
Test Speed: HIGH
Temperature: 25.3DEG
Operators: WFW
Test Date: 2023-03-03

γ Range: 0 - 180DEG
γ Interval: 1.0DEG
Test System: EVERFINE GO-2000B_V1 SYSTEM V2.0.269
Humidity: 65.0%
Test Distance: 10.800m [K=1.0000]
Remarks:

ZONAL FLUX DIAGRAM
AND LUMINANCE LIMITATION CURVES

ZONAL FLUX DIAGRAM:

γ	C0	C45	C90	C135	C180	C225	C270	C315	γ	Φ zone	Φ total	%lum, lamp
10	11.55	11.70	11.77	11.85	11.40	11.60	11.80	11.87	0- 10	1.129	1.129	3.3,3.3
20	10.91	11.07	11.16	11.19	10.69	10.91	11.12	11.20	10- 20	3.227	4.356	12.7,12.7
30	9.850	10.05	10.15	10.12	9.612	9.828	10.06	10.12	20- 30	4.869	9.225	27,27
40	8.486	8.678	8.815	8.737	8.247	8.460	8.673	8.719	30- 40	5.843	15.07	44,44
50	6.817	7.023	7.160	7.082	6.633	6.822	7.031	7.023	40- 50	6.029	21.10	61.6,61.6
60	4.968	5.170	5.345	5.246	4.880	5.024	5.189	5.125	50- 60	5.417	26.51	77.5,77.5
70	2.980	3.169	3.371	3.276	2.990	3.120	3.236	3.113	60- 70	4.106	30.62	89.5,89.5
80	1.124	1.243	1.418	1.306	1.092	1.222	1.352	1.153	70- 80	2.302	32.92	96.2,96.2
90	0.0833	0.1040	0.1870	0.1248	0.0139	0.1110	0.2425	0.0762	80- 90	0.5675	33.49	97.8,97.8
100	0.0416	0.1177	0.1870	0.1247	0.0208	0.1004	0.2009	0.0658	90-100	0.1141	33.60	98.2,98.2
110	0.0830	0.1143	0.1870	0.1281	0.0416	0.1004	0.1801	0.0658	100-110	0.1116	33.72	98.5,98.5
120	0.0831	0.1212	0.1731	0.1317	0.0555	0.1004	0.1593	0.0796	110-120	0.1097	33.83	98.8,98.8
130	0.0831	0.1351	0.1731	0.1489	0.0763	0.1006	0.1524	0.1004	120-130	0.1060	33.93	99.1,99.1
140	0.0831	0.1351	0.1662	0.1524	0.1108	0.1108	0.1524	0.1039	130-140	0.0970	34.03	99.4,99.4
150	0.0831	0.1420	0.1662	0.1628	0.1316	0.1143	0.1454	0.1143	140-150	0.0808	34.11	99.7,99.7
160	0.0900	0.1420	0.1801	0.1628	0.1385	0.1316	0.1454	0.1212	150-160	0.0625	34.17	99.8,99.8
170	0.1039	0.1420	0.1801	0.1628	0.1385	0.1628	0.1454	0.1316	160-170	0.0401	34.21	100,100
180	0.1385	0.1524	0.1662	0.1593	0.1385	0.1628	0.1524	0.1628	170-180	0.0142	34.23	100,100
DEG	LUMINOUS INTENSITY:cd									UNIT:lm		



LUMINANCE cd/(m2)		
G (DEG)	C0/180	C90/270
85	47	67
80	65	82
75	78	91
70	87	99
65	94	103
60	99	107
55	103	109
50	106	111
45	109	114

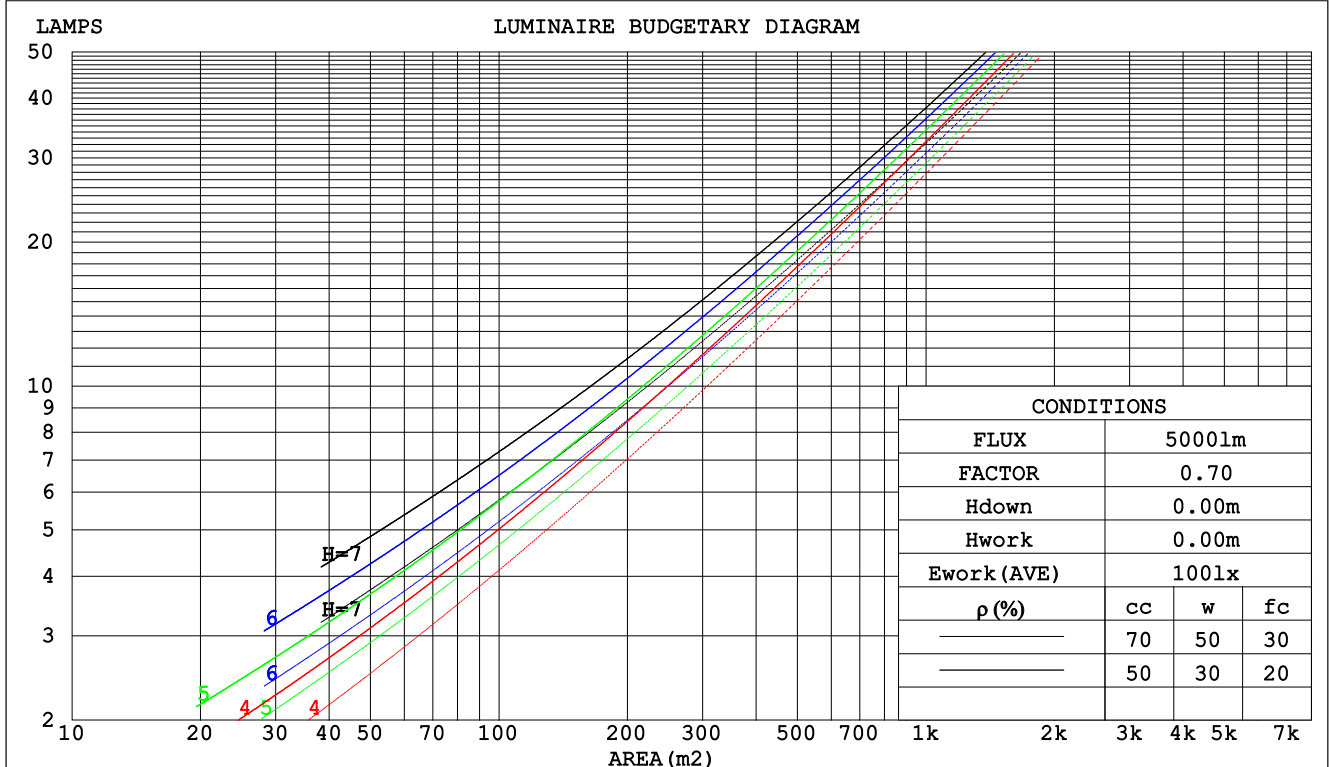
C Range: 0 - 360DEG
C Interval: 30.0DEG
Test Speed: HIGH
Temperature:25.3DEG
Operators:WFW
Test Date:2023-03-03

γ Range: 0 - 180DEG
 γ Interval: 1.0DEG
Test System:EVERFINE GO-2000B_V1 SYSTEM V2.0.269
Humidity:65.0%
Test Distance:10.800m [K=1.0000]
Remarks:

CU AND LUMINAIRE BUDGETARY ESTIMATE DIAGRAM

Test:U:24.00V I:0.1753A P:4.207W PF:1.000 Lamp Flux:34.2258x1 lm		
NAME: SF15-24V-5050-60-W12-RGB-R	TYPE: 硅胶	WEIGHT:
DIM.: 21MM*11.5MM	SPEC.:	SERIAL No.:202303002
MFR.: OLYMPIA	SUR.:1.0*0.0115	PROTECTION ANGLE:

pcc	80%			70%			50%			30%			10%			0
pw	50%	30%	10%	50%	30%	10%	50%	30%	10%	50%	30%	10%	50%	30%	10%	0
pfc	20%			20%			20%			20%			20%			0
RCR	RCR:Room Cavity Ratio			Coefficients of Utilization(CU)												
0.0	1.19	1.19	1.19	1.16	1.16	1.16	1.10	1.10	1.10	1.05	1.05	1.05	1.00	1.00	1.00	.98
1.0	1.04	.99	.95	1.01	.97	.94	.96	.93	.90	.92	.90	.87	.88	.86	.84	.82
2.0	.90	.83	.78	.88	.82	.77	.84	.79	.75	.81	.76	.72	.77	.74	.71	.68
3.0	.79	.71	.65	.77	.70	.64	.74	.68	.62	.71	.66	.61	.68	.64	.60	.57
4.0	.70	.61	.55	.69	.60	.54	.66	.59	.53	.63	.57	.52	.61	.56	.51	.49
5.0	.63	.54	.47	.61	.53	.47	.59	.52	.46	.57	.50	.45	.55	.49	.45	.42
6.0	.56	.47	.41	.55	.47	.41	.53	.46	.40	.51	.45	.40	.50	.44	.39	.37
7.0	.51	.42	.36	.50	.42	.36	.48	.41	.36	.47	.40	.35	.45	.39	.35	.33
8.0	.47	.38	.32	.46	.38	.32	.44	.37	.32	.43	.36	.31	.42	.36	.31	.29
9.0	.43	.35	.29	.42	.34	.29	.41	.34	.29	.40	.33	.28	.38	.32	.28	.26
10.0	.39	.32	.26	.39	.31	.26	.38	.31	.26	.37	.30	.26	.36	.30	.26	.24



C Range: 0 - 360DEG
C Interval: 30.0DEG
Test Speed: HIGH
Temperature:25.3DEG
Operators:WFW
Test Date:2023-03-03

γ Range: 0 - 180DEG
γ Interval: 1.0DEG
Test System:EVERFINE GO-2000B_V1 SYSTEM V2.0.269
Humidity:65.0%
Test Distance:10.800m [K=1.0000]
Remarks:

WEC AND CCEC

Test:U:24.00V I:0.1753A P:4.207W PF:1.000 Lamp Flux:34.2258x1 lm					
NAME: SF15-24V-5050-60-W12-RGB-R			TYPE: 硅胶		WEIGHT:
DIM.: 21MM*11.5MM			SPEC.:		SERIAL No.:202303002
MFR.: OLYMPIA			SUR.:1.0*0.0115		PROTECTION ANGLE:

pcc	80%			70%			50%			30%			10%			0	
pw	50%	30%	10%	50%	30%	10%	50%	30%	10%	50%	30%	10%	50%	30%	10%	0	
pfc	20%			20%			20%			20%			20%			0	
RCR	RCR:Room Cavity Ratio						Wall Exitance Coefficients(WEC)										
0.0																	
1.0	.306	.174	.055	.298	.170	.054	.284	.163	.052	.270	.156	.050	.258	.150	.048		
2.0	.289	.158	.049	.282	.155	.048	.269	.150	.046	.257	.144	.045	.246	.139	.044		
3.0	.268	.142	.043	.262	.140	.042	.250	.136	.041	.240	.131	.040	.230	.127	.039		
4.0	.247	.128	.038	.242	.127	.037	.232	.123	.037	.222	.119	.036	.214	.116	.035		
5.0	.229	.117	.034	.224	.115	.033	.215	.112	.033	.206	.109	.032	.199	.106	.032		
6.0	.212	.106	.030	.208	.105	.030	.200	.102	.030	.192	.100	.029	.185	.097	.029		
7.0	.198	.098	.028	.194	.097	.028	.186	.094	.027	.180	.092	.027	.173	.090	.026		
8.0	.185	.090	.025	.181	.089	.025	.175	.087	.025	.168	.085	.025	.163	.084	.024		
9.0	.173	.084	.023	.170	.083	.023	.164	.081	.023	.158	.079	.023	.153	.078	.022		
10.0	.163	.078	.022	.160	.077	.022	.155	.076	.021	.149	.074	.021	.145	.073	.021		

pcc	80%			70%			50%			30%			10%			0
pw	50%	30%	10%	50%	30%	10%	50%	30%	10%	50%	30%	10%	50%	30%	10%	0
pfc	20%			20%			20%			20%			20%			0
RCR	RCR:Room Cavity Ratio						Ceiling Cavity Exitance Coefficients(CCEC)									
0.0	.207	.207	.207	.177	.177	.177	.121	.121	.121	.069	.069	.069	.022	.022	.022	
1.0	.197	.173	.151	.168	.148	.130	.115	.102	.090	.066	.059	.052	.021	.019	.017	
2.0	.188	.149	.115	.161	.128	.099	.111	.088	.069	.064	.051	.041	.020	.017	.013	
3.0	.181	.131	.091	.155	.113	.079	.106	.079	.056	.061	.046	.033	.020	.015	.011	
4.0	.173	.118	.075	.149	.102	.066	.102	.071	.046	.059	.042	.027	.019	.014	.009	
5.0	.166	.107	.064	.142	.093	.056	.098	.065	.039	.057	.038	.023	.018	.012	.008	
6.0	.159	.099	.056	.136	.086	.049	.094	.060	.035	.055	.035	.021	.018	.012	.007	
7.0	.152	.092	.050	.131	.080	.044	.090	.056	.031	.052	.033	.018	.017	.011	.006	
8.0	.145	.086	.046	.125	.075	.040	.087	.053	.028	.050	.031	.017	.016	.010	.006	
9.0	.139	.081	.042	.120	.071	.037	.083	.050	.026	.048	.029	.016	.016	.010	.005	
10.0	.134	.077	.040	.115	.067	.035	.080	.047	.025	.047	.028	.015	.015	.009	.005	

C Range: 0 - 360DEG
 C Interval: 30.0DEG
 Test Speed: HIGH
 Temperature:25.3DEG
 Operators:WFW
 Test Date:2023-03-03

γ Range: 0 - 180DEG
 γ Interval: 1.0DEG
 Test System:EVERFINE GO-2000B_V1 SYSTEM V2.0.269
 Humidity:65.0%
 Test Distance:10.800m [K=1.0000]
 Remarks:

Uncorrected UGR Table

Test:U:24.00V I:0.1753A P:4.207W PF:1.000 Lamp Flux:34.2258x1 lm										
NAME: SF15-24V-5050-60-W12-RGB-R					TYPE: 硅胶			WEIGHT:		
DIM.: 21MM*11.5MM					SPEC.:			SERIAL No.:202303002		
MFR.: OLYMPIA					SUR.:1.0*0.0115			PROTECTION ANGLE:		
ceiling/cavity	0.7	0.7	0.5	0.5	0.3	0.7	0.7	0.5	0.5	0.3
walls	0.5	0.3	0.5	0.3	0.3	0.5	0.3	0.5	0.3	0.3
working plane	0.2	0.2	0.2	0.2	0.2	0.2	0.2	0.2	0.2	0.2
Room dimensions	Viewed crosswise					Viewed endwise				
x = 2H y = 2H	4.8	6.3	5.1	6.6	6.8	5.2	6.6	5.5	6.9	7.1
3H	6.3	7.6	6.6	7.9	8.2	6.7	8.1	7.0	8.3	8.6
4H	6.8	8.1	7.1	8.4	8.7	7.3	8.6	7.7	8.9	9.2
6H	7.1	8.3	7.5	8.6	9.0	7.7	9.0	8.1	9.3	9.6
8H	7.2	8.4	7.6	8.7	9.0	7.9	9.1	8.3	9.4	9.7
12H	7.2	8.3	7.6	8.7	9.0	7.9	9.1	8.3	9.4	9.8
4H 2H	5.5	6.8	5.8	7.1	7.4	5.7	7.0	6.1	7.3	7.6
3H	7.1	8.2	7.4	8.5	8.9	7.4	8.6	7.8	8.9	9.3
4H	7.7	8.7	8.1	9.1	9.5	8.2	9.2	8.6	9.6	10.0
6H	8.1	9.0	8.6	9.4	9.8	8.7	9.7	9.2	10.0	10.5
8H	8.2	9.1	8.7	9.5	9.9	8.9	9.8	9.4	10.2	10.6
12H	8.3	9.1	8.8	9.5	10.0	9.0	9.8	9.5	10.2	10.7
8H 4H	8.0	8.8	8.4	9.2	9.6	8.4	9.3	8.8	9.7	10.1
6H	8.5	9.2	9.0	9.7	10.1	9.1	9.8	9.6	10.2	10.7
8H	8.7	9.3	9.2	9.8	10.3	9.3	10.0	9.8	10.4	10.9
12H	8.8	9.3	9.3	9.8	10.3	9.5	10.1	10.0	10.5	11.1
12H 4H	8.0	8.8	8.4	9.2	9.6	8.4	9.2	8.8	9.6	10.0
6H	8.6	9.2	9.1	9.7	10.1	9.1	9.7	9.6	10.2	10.7
8H	8.8	9.3	9.3	9.8	10.3	9.4	9.9	9.9	10.4	11.0
Variations with the observer position at spacings:										
S = 1.0H	+ 0.2 / - 0.2					+ 0.1 / - 0.2				
1.5H	+ 0.2 / - 0.3					+ 0.2 / - 0.3				
2.0H	+ 0.2 / - 0.3					+ 0.2 / - 0.3				

CIE Pub.117 Corrected 34.23 lm Total Lamp Luminous Flux. (8log(F/F0) = -11.7)

C Range: 0 - 360DEG
 C Interval: 30.0DEG
 Test Speed: HIGH
 Temperature:25.3DEG
 Operators:WFW
 Test Date:2023-03-03

γ Range: 0 - 180DEG
 γ Interval: 1.0DEG
 Test System:EVERFINE GO-2000B_V1 SYSTEM V2.0.269
 Humidity:65.0%
 Test Distance:10.800m [K=1.0000]
 Remarks:

UTILIZATION FACTORS TABLE

Test:U:24.00V I:0.1753A P:4.207W PF:1.000 Lamp Flux:34.2258x1 lm		
NAME: SF15-24V-5050-60-W12-RGB-R	TYPE: 硅胶	WEIGHT:
DIM.: 21MM*11.5MM	SPEC.:	SERIAL No.:202303002
MFR.: OLYMPIA	SUR.:1.0*0.0115	PROTECTION ANGLE:

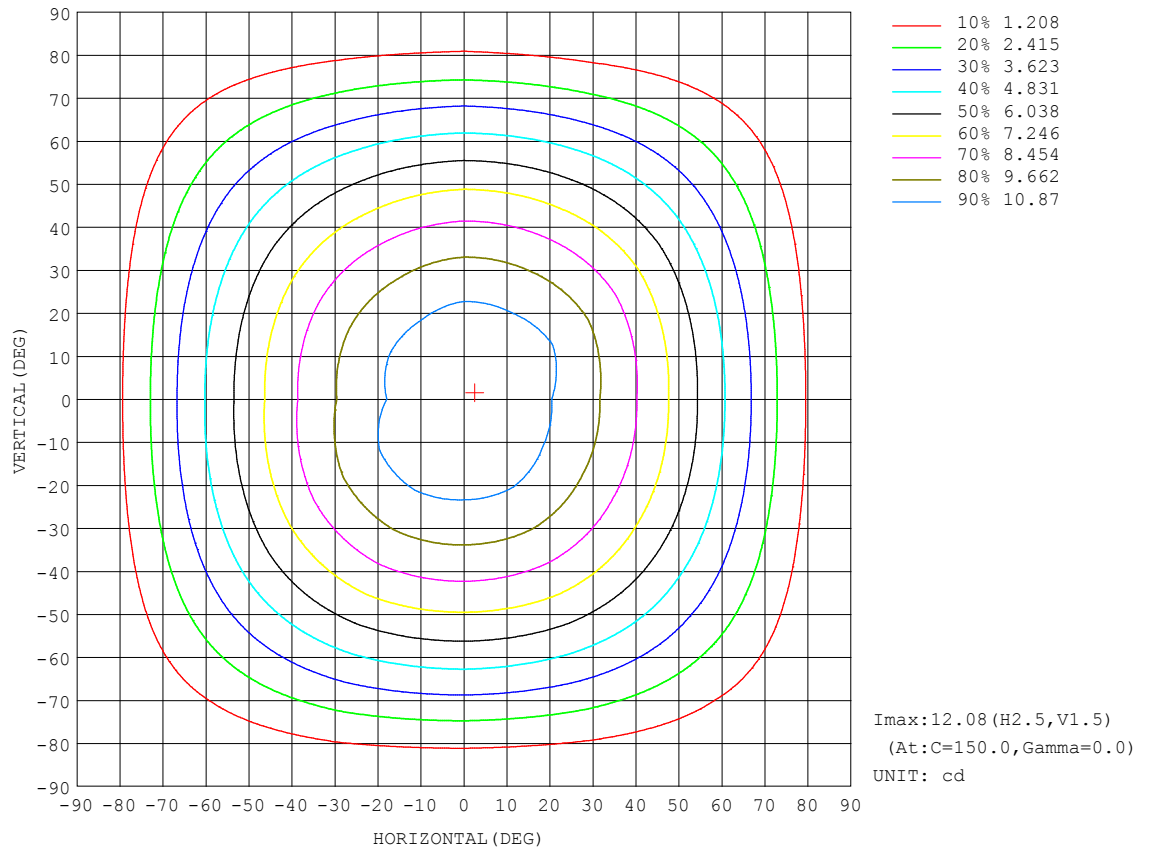
REFLECTANCE										
Ceiling	0.8	0.8	0.8	0.7	0.7	0.7	0.5	0.5	0.5	0
Walls	0.7	0.5	0.3	0.7	0.5	0.3	0.7	0.5	0.3	0
Working plane	0.2	0.2	0.2	0.2	0.2	0.2	0.2	0.2	0.2	0
ROOM INDEX	UTILIZATION FACTORS (PERCENT) $k(RI) \times RCR = 5$									
$k = 0.60$	57	46	39	56	45	38	55	45	38	32
0.80	67	55	48	66	55	48	64	54	47	40
1.00	76	64	57	74	64	57	72	65	56	49
1.25	83	72	65	81	71	64	78	70	64	56
1.50	88	78	71	86	77	70	83	75	69	61
2.00	94	86	79	92	85	79	89	82	77	69
2.50	98	91	85	96	89	84	92	86	81	73
3.00	102	95	89	99	93	88	95	90	86	77
4.00	106	100	95	103	98	94	99	94	91	81
5.00	108	103	99	106	101	98	101	97	94	84
ROOM INDEX	UF(total)									Direct
According to DIN EN 13032-2 2004			Suspended					SHRNM = 1.25		

C Range: 0 - 360DEG
 C Interval: 30.0DEG
 Test Speed: HIGH
 Temperature:25.3DEG
 Operators:WFW
 Test Date:2023-03-03

γ Range: 0 - 180DEG
 γ Interval: 1.0DEG
 Test System:EVERFINE GO-2000B_V1 SYSTEM V2.0.269
 Humidity:65.0%
 Test Distance:10.800m [K=1.0000]
 Remarks:

ISOCANDELA DIAGRAM

Test:U:24.00V I:0.1753A P:4.207W PF:1.000 Lamp Flux:34.2258x1 lm		
NAME: SF15-24V-5050-60-W12-RGB-R	TYPE: 硅胶	WEIGHT:
DIM.: 21MM*11.5MM	SPEC.:	SERIAL No.:202303002
MFR.: OLYMPIA	SUR.:1.0*0.0115	PROTECTION ANGLE:

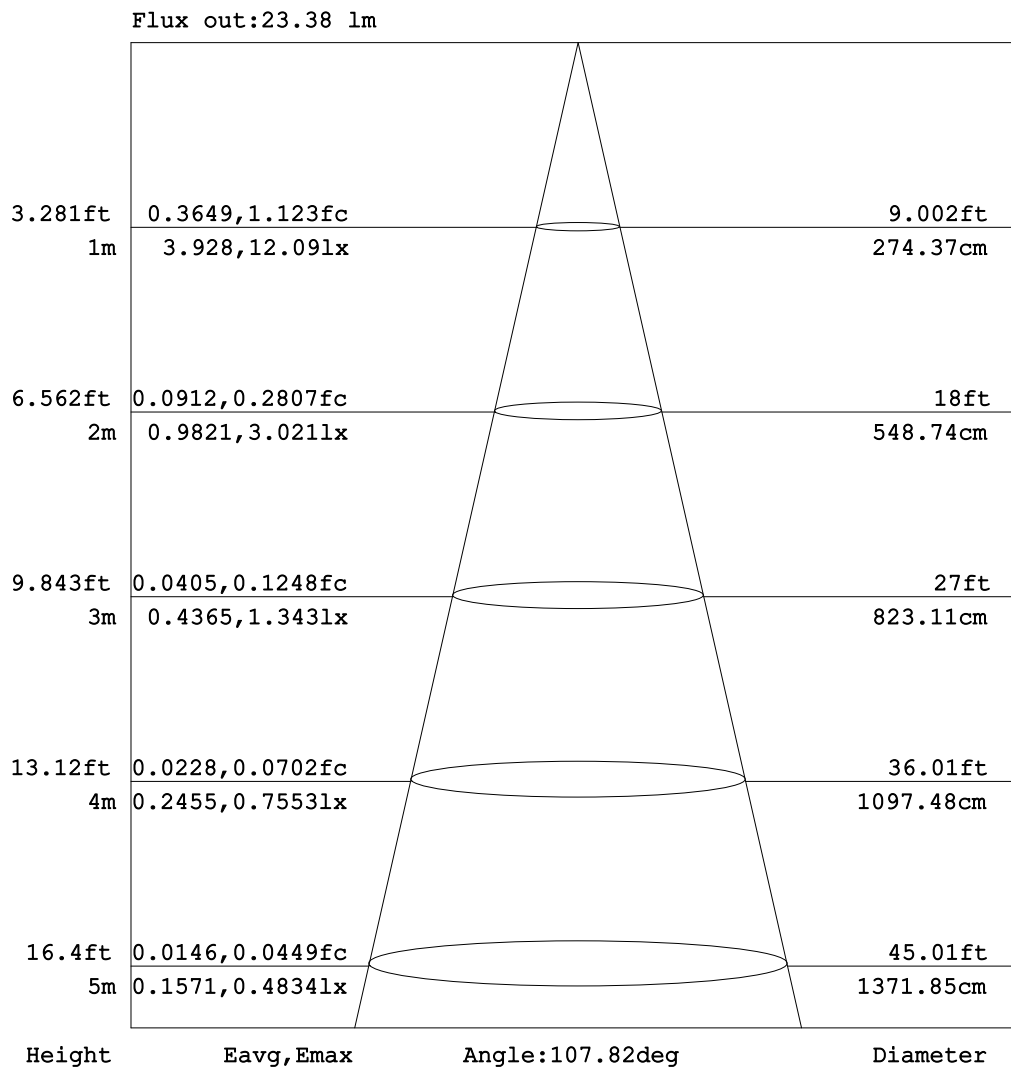


C Range: 0 - 360DEG
C Interval: 30.0DEG
Test Speed: HIGH
Temperature:25.3DEG
Operators:WFW
Test Date:2023-03-03

γ Range: 0 - 180DEG
 γ Interval: 1.0DEG
Test System:EVERFINE GO-2000B_V1 SYSTEM V2.0.269
Humidity:65.0%
Test Distance:10.800m [K=1.0000]
Remarks:

AAI Figure

Test:U:24.00V I:0.1753A P:4.207W PF:1.000 Lamp Flux:34.2258x1 lm		
NAME: SF15-24V-5050-60-W12-RGB-R	TYPE: 硅胶	WEIGHT:
DIM.: 21MM*11.5MM	SPEC.:	SERIAL No.:202303002
MFR.: OLYMPIA	SUR.:1.0*0.0115	PROTECTION ANGLE:



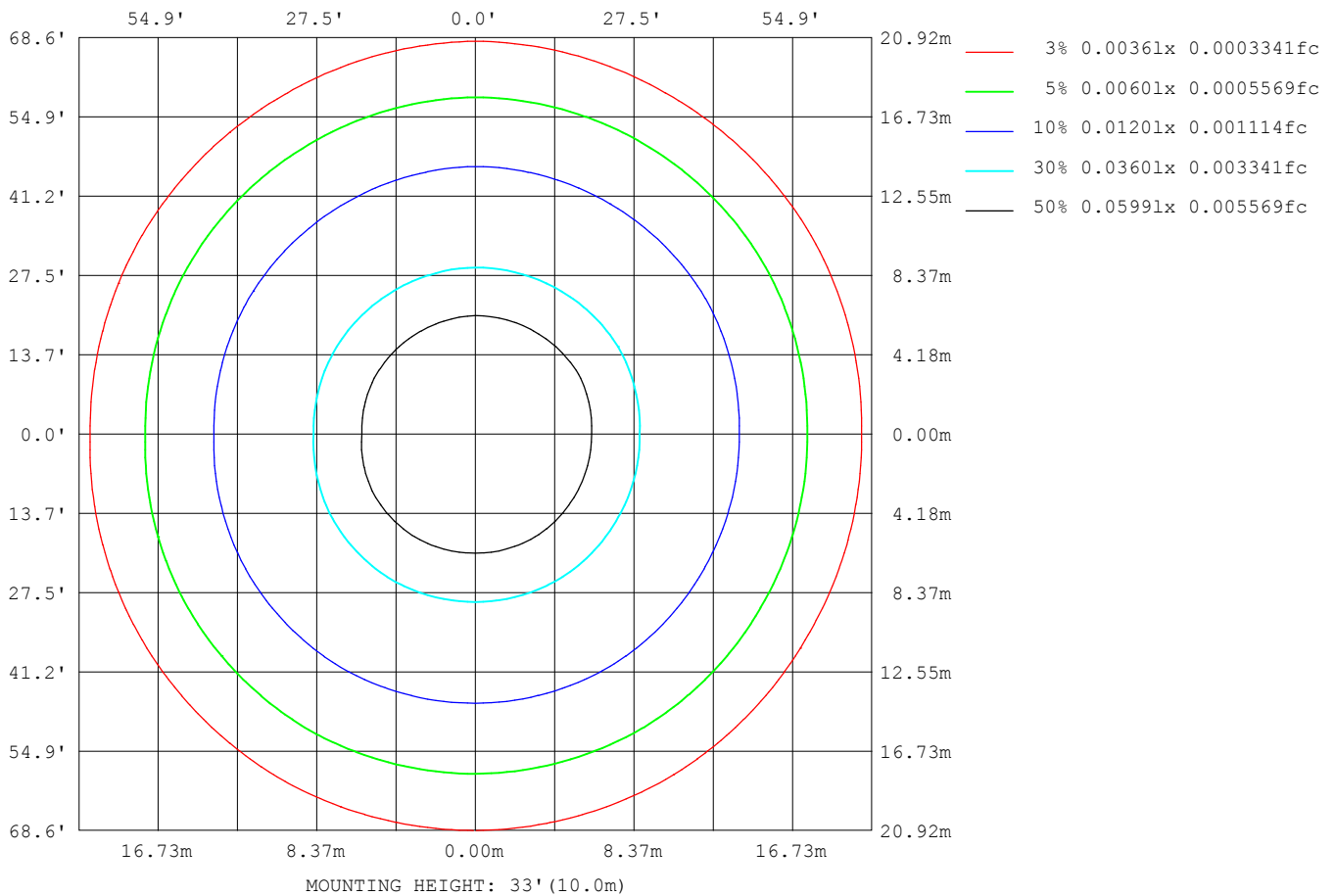
Note: The Curves indicate the illuminated area and the average illumination when the luminaire is at different distance.

C Range: 0 - 360DEG
C Interval: 30.0DEG
Test Speed: HIGH
Temperature: 25.3DEG
Operators: WFW
Test Date: 2023-03-03

γ Range: 0 - 180DEG
γ Interval: 1.0DEG
Test System: EVERFINE GO-2000B_V1 SYSTEM V2.0.269
Humidity: 65.0%
Test Distance: 10.800m [K=1.0000]
Remarks:

ISOLUX DIAGRAM

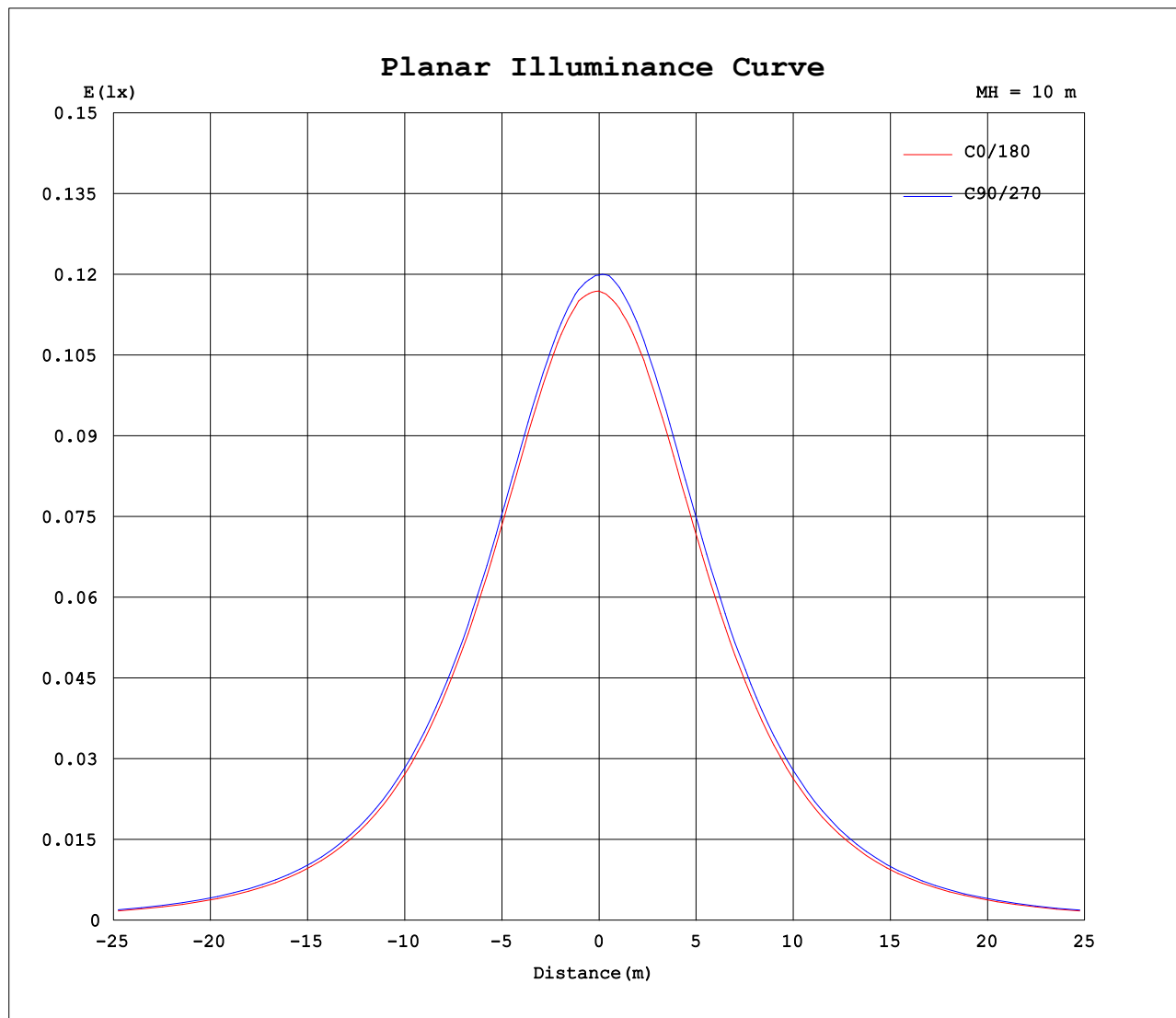
Test:U:24.00V I:0.1753A P:4.207W PF:1.000 Lamp Flux:34.2258x1 lm		
NAME: SF15-24V-5050-60-W12-RGB-R	TYPE: 硅胶	WEIGHT:
DIM.: 21MM*11.5MM	SPEC.:	SERIAL No.:202303002
MFR.: OLYMPIA	SUR.:1.0*0.0115	PROTECTION ANGLE:



C Range: 0 - 360DEG
C Interval: 30.0DEG
Test Speed: HIGH
Temperature:25.3DEG
Operators:WFW
Test Date:2023-03-03

γ Range: 0 - 180DEG
 γ Interval: 1.0DEG
Test System:EVERFINE GO-2000B_V1 SYSTEM V2.0.269
Humidity:65.0%
Test Distance:10.800m [K=1.0000]
Remarks:

Planar Illuminance Curve



C Range: 0 - 360DEG
C Interval: 30.0DEG
Test Speed: HIGH
Temperature: 25.3DEG
Operators: WFW
Test Date: 2023-03-03

γ Range: 0 - 180DEG
 γ Interval: 1.0DEG
Test System: EVERFINE GO-2000B_V1 SYSTEM V2.0.269
Humidity: 65.0%
Test Distance: 10.800m [K=1.0000]
Remarks:

LUMINOUS DISTRIBUTION INTENSITY DATA

Test:U:24.00V I:0.1753A P:4.207W PF:1.000 Lamp Flux:34.2258x1 lm		
NAME: SF15-24V-5050-60-W12-RGB-R	TYPE: 硅胶	WEIGHT:
DIM.: 21MM*11.5MM	SPEC.:	SERIAL No.:202303002
MFR.: OLYMPIA	SUR.:1.0*0.0115	PROTECTION ANGLE:

Table--1

UNIT: cd

C (DEG) γ (DEG)	0	30	60	90	120	150	180	210	240	270	300	330						
0	11.7	11.8	11.9	12.0	12.0	12.1	11.7	11.8	11.9	12.0	12.0	12.1						
5	11.7	11.8	11.9	11.9	12.0	12.0	11.6	11.8	11.8	12.0	12.0	12.1						
10	11.5	11.6	11.8	11.8	11.9	11.8	11.4	11.6	11.6	11.8	11.8	11.9						
15	11.3	11.3	11.5	11.5	11.6	11.5	11.1	11.3	11.3	11.5	11.5	11.6						
20	10.9	11.0	11.2	11.2	11.2	11.1	10.7	10.9	10.9	11.1	11.1	11.3						
25	10.4	10.5	10.7	10.7	10.8	10.6	10.2	10.4	10.4	10.6	10.7	10.8						
30	9.85	9.94	10.1	10.1	10.2	10.0	9.61	9.79	9.87	10.1	10.1	10.2						
35	9.22	9.29	9.50	9.51	9.54	9.36	8.97	9.14	9.21	9.38	9.40	9.50						
40	8.49	8.57	8.78	8.82	8.83	8.64	8.25	8.42	8.50	8.67	8.68	8.76						
45	7.69	7.78	7.99	8.03	8.03	7.85	7.46	7.63	7.70	7.88	7.87	7.94						
50	6.82	6.92	7.13	7.16	7.18	6.99	6.63	6.79	6.85	7.03	7.00	7.05						
55	5.91	6.02	6.22	6.26	6.27	6.08	5.77	5.90	5.97	6.12	6.08	6.11						
60	4.97	5.06	5.28	5.35	5.34	5.15	4.88	4.99	5.05	5.19	5.14	5.11						
65	3.98	4.07	4.30	4.37	4.37	4.19	3.95	4.05	4.10	4.22	4.14	4.12						
70	2.98	3.06	3.28	3.37	3.36	3.19	2.99	3.10	3.14	3.24	3.13	3.10						
75	2.02	2.08	2.27	2.37	2.36	2.18	2.03	2.14	2.17	2.26	2.12	2.08						
80	1.12	1.15	1.34	1.42	1.41	1.20	1.09	1.19	1.25	1.35	1.18	1.13						
85	0.41	0.39	0.53	0.58	0.56	0.37	0.30	0.40	0.43	0.57	0.38	0.39						
90	0.08	0.05	0.16	0.19	0.17	0.08	0.01	0.09	0.13	0.24	0.10	0.05						
95	0.04	0.05	0.15	0.19	0.17	0.08	0.01	0.07	0.14	0.21	0.10	0.03						
100	0.04	0.09	0.15	0.19	0.17	0.08	0.02	0.06	0.14	0.20	0.10	0.03						
105	0.04	0.08	0.15	0.19	0.17	0.09	0.03	0.06	0.14	0.18	0.10	0.03						
110	0.08	0.08	0.15	0.19	0.17	0.09	0.04	0.06	0.14	0.18	0.10	0.03						
115	0.08	0.10	0.14	0.18	0.17	0.09	0.05	0.06	0.14	0.16	0.12	0.03						
120	0.08	0.10	0.14	0.17	0.17	0.10	0.06	0.06	0.14	0.16	0.12	0.04						
125	0.08	0.12	0.14	0.17	0.17	0.13	0.08	0.06	0.14	0.16	0.15	0.06						
130	0.08	0.13	0.14	0.17	0.17	0.13	0.08	0.06	0.14	0.15	0.15	0.06						
135	0.08	0.13	0.14	0.17	0.17	0.14	0.10	0.06	0.15	0.15	0.15	0.06						
140	0.08	0.13	0.14	0.17	0.17	0.14	0.11	0.07	0.15	0.15	0.15	0.06						
145	0.08	0.15	0.14	0.17	0.17	0.15	0.11	0.07	0.15	0.15	0.15	0.06						
150	0.08	0.15	0.14	0.17	0.17	0.16	0.13	0.08	0.15	0.15	0.15	0.08						
155	0.09	0.15	0.14	0.17	0.17	0.16	0.14	0.08	0.15	0.15	0.15	0.08						
160	0.09	0.15	0.14	0.18	0.17	0.16	0.14	0.09	0.17	0.15	0.15	0.09						
165	0.10	0.15	0.14	0.18	0.17	0.16	0.14	0.10	0.17	0.15	0.15	0.10						
170	0.10	0.15	0.14	0.18	0.17	0.16	0.14	0.16	0.17	0.15	0.17	0.10						
175	0.10	0.15	0.15	0.19	0.17	0.16	0.14	0.16	0.17	0.15	0.17	0.12						
180	0.14	0.15	0.16	0.17	0.16	0.16	0.14	0.16	0.17	0.15	0.17	0.16						

C Range: 0 - 360DEG
C Interval: 30.0DEG
Test Speed: HIGH
Temperature:25.3DEG
Operators:WFW
Test Date:2023-03-03

γ Range: 0 - 180DEG
γ Interval: 1.0DEG
Test System:EVERFINE GO-2000B_V1 SYSTEM V2.0.269
Humidity:65.0%
Test Distance:10.800m [K=1.0000]
Remarks:

Photometric Data Table [cd]

G/C	0.0	30.0	60.0	90.0	120.0	150.0	180.0	210.0	240.0	270.0
0.0	11.69	11.79	11.90	11.99	12.02	12.09	11.69	11.79	11.90	11.99
3.0	11.69	11.79	11.91	11.95	12.02	12.05	11.63	11.79	11.86	12.02
6.0	11.70	11.74	11.91	11.91	12.02	11.97	11.56	11.75	11.77	11.95
9.0	11.59	11.67	11.82	11.82	11.93	11.87	11.45	11.64	11.69	11.84
12.0	11.46	11.52	11.69	11.68	11.79	11.72	11.29	11.48	11.52	11.70
15.0	11.28	11.34	11.53	11.52	11.61	11.54	11.09	11.29	11.34	11.51
18.0	11.07	11.14	11.33	11.32	11.39	11.30	10.87	11.05	11.11	11.30
21.0	10.81	10.89	11.08	11.07	11.14	11.04	10.60	10.78	10.84	11.03
24.0	10.53	10.62	10.81	10.81	10.86	10.75	10.30	10.49	10.57	10.74
27.0	10.21	10.30	10.49	10.50	10.54	10.41	9.972	10.16	10.22	10.42
30.0	9.850	9.945	10.15	10.15	10.20	10.04	9.612	9.787	9.868	10.06
33.0	9.469	9.577	9.760	9.806	9.808	9.660	9.231	9.406	9.487	9.663
36.0	9.081	9.169	9.351	9.369	9.400	9.224	8.829	9.011	9.085	9.268
39.0	8.638	8.739	8.936	8.961	8.985	8.794	8.399	8.562	8.648	8.825
42.0	8.168	8.275	8.472	8.511	8.521	8.324	7.936	8.105	8.185	8.368
45.0	7.689	7.776	7.987	8.026	8.029	7.846	7.457	7.627	7.700	7.883
48.0	7.177	7.277	7.482	7.520	7.530	7.326	6.965	7.128	7.201	7.377
51.0	6.644	6.737	6.956	6.993	7.004	6.813	6.466	6.609	6.688	6.845
54.0	6.097	6.190	6.409	6.460	6.457	6.253	5.941	6.096	6.148	6.318
57.0	5.543	5.636	5.841	5.906	5.903	5.712	5.414	5.556	5.608	5.757
60.0	4.968	5.061	5.279	5.345	5.342	5.151	4.880	4.995	5.054	5.189
63.0	4.380	4.465	4.691	4.791	4.754	4.569	4.333	4.448	4.479	4.628
66.0	3.784	3.870	4.095	4.161	4.165	3.988	3.745	3.873	3.911	4.019
69.0	3.181	3.260	3.486	3.579	3.562	3.399	3.191	3.291	3.343	3.444
72.0	2.586	2.658	2.884	2.962	2.960	2.789	2.595	2.710	2.747	2.862
75.0	2.024	2.083	2.274	2.367	2.364	2.180	2.034	2.142	2.173	2.260
78.0	1.463	1.501	1.706	1.806	1.789	1.598	1.459	1.560	1.619	1.726
81.0	0.9575	0.9751	1.152	1.238	1.221	1.024	0.9122	1.013	1.065	1.186
84.0	0.5281	0.5182	0.6737	0.7121	0.7016	0.5181	0.4347	0.5278	0.5799	0.7080
87.0	0.2088	0.1725	0.3060	0.3179	0.3199	0.1657	0.1101	0.2086	0.2003	0.3610
90.0	0.0833	0.0485	0.1594	0.1870	0.1735	0.0762	0.0139	0.0903	0.1317	0.2425
93.0	0.0416	0.0485	0.1454	0.1870	0.1662	0.0762	0.0139	0.0693	0.1385	0.2355
96.0	0.0416	0.0485	0.1454	0.1870	0.1662	0.0763	0.0139	0.0693	0.1385	0.2147
99.0	0.0416	0.0557	0.1454	0.1870	0.1662	0.0831	0.0208	0.0623	0.1385	0.2078
102.0	0.0416	0.0831	0.1454	0.1870	0.1662	0.0900	0.0208	0.0623	0.1385	0.1871
105.0	0.0416	0.0831	0.1454	0.1870	0.1662	0.0900	0.0277	0.0623	0.1385	0.1801
108.0	0.0552	0.0831	0.1454	0.1870	0.1662	0.0900	0.0346	0.0623	0.1385	0.1801
111.0	0.0831	0.0970	0.1386	0.1869	0.1662	0.0900	0.0416	0.0623	0.1385	0.1732
114.0	0.0831	0.1039	0.1385	0.1801	0.1662	0.0900	0.0485	0.0623	0.1385	0.1663
117.0	0.0831	0.1039	0.1385	0.1731	0.1662	0.0900	0.0554	0.0623	0.1385	0.1593
120.0	0.0831	0.1039	0.1385	0.1731	0.1662	0.0972	0.0555	0.0623	0.1385	0.1593
123.0	0.0831	0.1041	0.1385	0.1731	0.1662	0.1247	0.0693	0.0623	0.1385	0.1593
126.0	0.0831	0.1177	0.1385	0.1731	0.1662	0.1316	0.0762	0.0623	0.1385	0.1593
129.0	0.0831	0.1316	0.1385	0.1731	0.1662	0.1316	0.0762	0.0623	0.1385	0.1524
132.0	0.0831	0.1316	0.1385	0.1731	0.1662	0.1385	0.0900	0.0623	0.1524	0.1524
135.0	0.0831	0.1316	0.1385	0.1731	0.1662	0.1385	0.1040	0.0623	0.1524	0.1524
138.0	0.0831	0.1316	0.1385	0.1662	0.1662	0.1385	0.1040	0.0693	0.1524	0.1524
141.0	0.0831	0.1316	0.1385	0.1662	0.1662	0.1385	0.1108	0.0693	0.1524	0.1524
144.0	0.0831	0.1454	0.1385	0.1662	0.1662	0.1386	0.1108	0.0693	0.1524	0.1524
147.0	0.0831	0.1454	0.1385	0.1662	0.1662	0.1593	0.1177	0.0693	0.1524	0.1455
150.0	0.0831	0.1454	0.1385	0.1662	0.1662	0.1593	0.1316	0.0762	0.1524	0.1454
153.0	0.0901	0.1454	0.1385	0.1662	0.1662	0.1593	0.1385	0.0762	0.1524	0.1454
156.0	0.0900	0.1454	0.1385	0.1662	0.1662	0.1593	0.1385	0.0831	0.1524	0.1454
159.0	0.0900	0.1454	0.1385	0.1801	0.1662	0.1593	0.1385	0.0900	0.1595	0.1454
162.0	0.0900	0.1454	0.1385	0.1801	0.1662	0.1593	0.1385	0.0900	0.1662	0.1454
165.0	0.0970	0.1454	0.1385	0.1801	0.1662	0.1593	0.1385	0.0969	0.1662	0.1454
168.0	0.1039	0.1454	0.1385	0.1801	0.1662	0.1593	0.1385	0.1593	0.1662	0.1454
171.0	0.1039	0.1454	0.1385	0.1801	0.1662	0.1593	0.1385	0.1593	0.1662	0.1454
174.0	0.1039	0.1454	0.1454	0.1801	0.1662	0.1593	0.1385	0.1593	0.1662	0.1454
177.0	0.1313	0.1454	0.1591	0.1731	0.1594	0.1593	0.1385	0.1593	0.1662	0.1524
180.0	0.1385	0.1454	0.1593	0.1662	0.1593	0.1593	0.1385	0.1593	0.1662	0.1524
G/C	300.0	330.0								
0.0	12.02	12.09								
3.0	12.02	12.08								
6.0	11.95	12.08								
9.0	11.84	11.99								
12.0	11.70	11.84								
15.0	11.54	11.65								
18.0	11.31	11.44								
21.0	11.05	11.17								
24.0	10.76	10.87								
27.0	10.45	10.54								
30.0	10.07	10.18								

C Range: 0 - 360DEG
 C Interval: 30.0DEG
 Test Speed: HIGH
 Temperature: 25.3DEG
 Operators: WFW
 Test Date: 2023-03-03

γ Range: 0 - 180DEG
 γ Interval: 1.0DEG
 Test System: EVERFINE GO-2000B_V1 SYSTEM V2.0.269
 Humidity: 65.0%
 Test Distance: 10.800m [K=1.0000]
 Remarks:

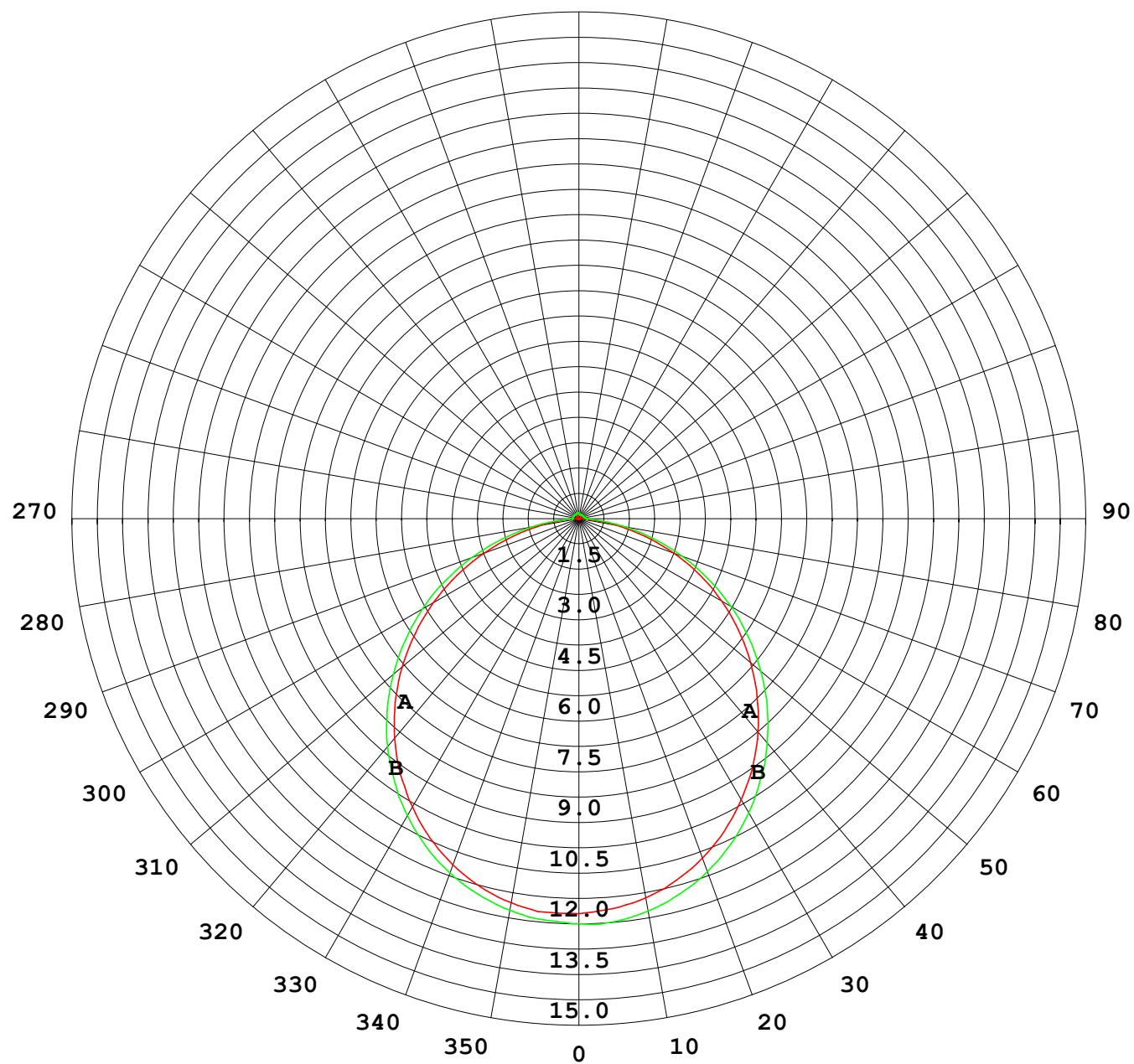
Photometric Data Table [cd]

33.0	9.681	9.787
36.0	9.258	9.351
39.0	8.842	8.922
42.0	8.365	8.437
45.0	7.866	7.938
48.0	7.353	7.412
51.0	6.820	6.865
54.0	6.266	6.304
57.0	5.698	5.722
60.0	5.137	5.113
63.0	4.541	4.517
66.0	3.939	3.894
69.0	3.329	3.277
72.0	2.719	2.668
75.0	2.117	2.080
78.0	1.549	1.511
81.0	1.009	0.9708
84.0	0.5246	0.5139
87.0	0.1725	0.1809
90.0	0.1039	0.0486
93.0	0.1039	0.0277
96.0	0.1039	0.0277
99.0	0.1039	0.0277
102.0	0.1039	0.0277
105.0	0.1039	0.0277
108.0	0.1039	0.0277
111.0	0.1040	0.0277
114.0	0.1177	0.0277
117.0	0.1177	0.0415
120.0	0.1177	0.0416
123.0	0.1179	0.0485
126.0	0.1385	0.0554
129.0	0.1386	0.0554
132.0	0.1454	0.0623
135.0	0.1454	0.0623
138.0	0.1454	0.0623
141.0	0.1454	0.0623
144.0	0.1454	0.0623
147.0	0.1524	0.0623
150.0	0.1524	0.0762
153.0	0.1524	0.0762
156.0	0.1524	0.0762
159.0	0.1524	0.0900
162.0	0.1524	0.0900
165.0	0.1524	0.0969
168.0	0.1594	0.0970
171.0	0.1662	0.1107
174.0	0.1662	0.1039
177.0	0.1662	0.1246
180.0	0.1662	0.1593

C Range: 0 - 360DEG
C Interval: 30.0DEG
Test Speed: HIGH
Temperature:25.3DEG
Operators:WFW
Test Date:2023-03-03

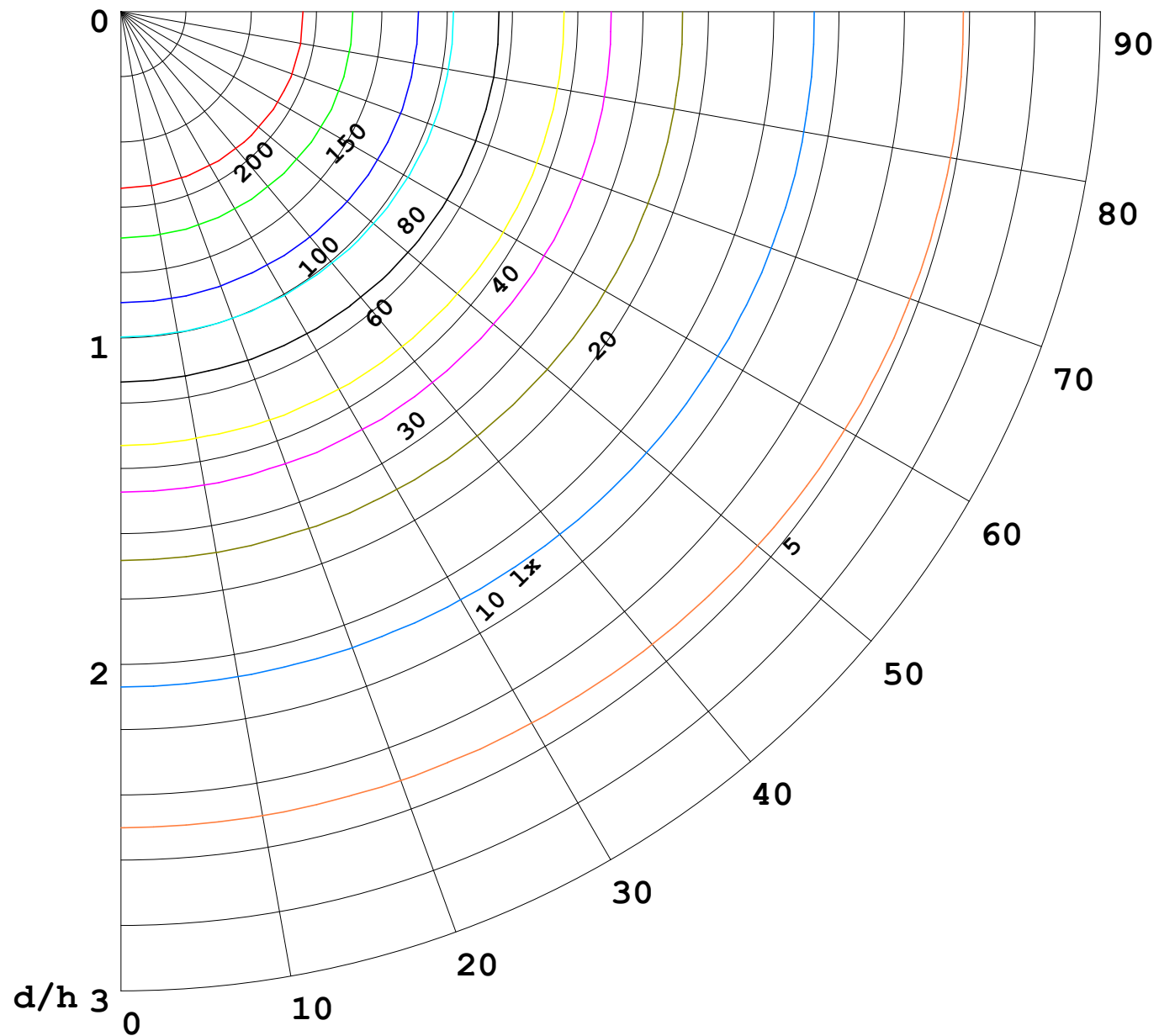
γ Range: 0 - 180DEG
γ Interval: 1.0DEG
Test System:EVERFINE GO-2000B_V1 SYSTEM V2.0.269
Humidity:65.0%
Test Distance:10.800m [K=1.0000]
Remarks:

I (cd)



1000 lm

$\kappa = 1$



F = 5000 lm
 K = 0.7
 Hcc = 0.0 m
 Hfc = 0.0 m
 Eave = 100 lx

	Pcc	Pw	Pfc
—	70	50	30
—	50	30	20

