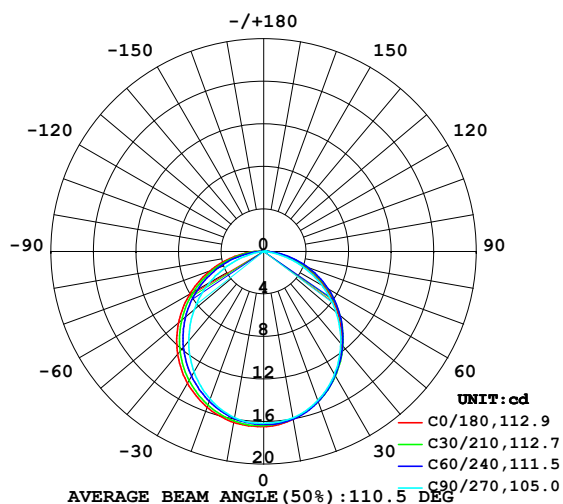


LUMINAIRE PHOTOMETRIC TEST REPORT

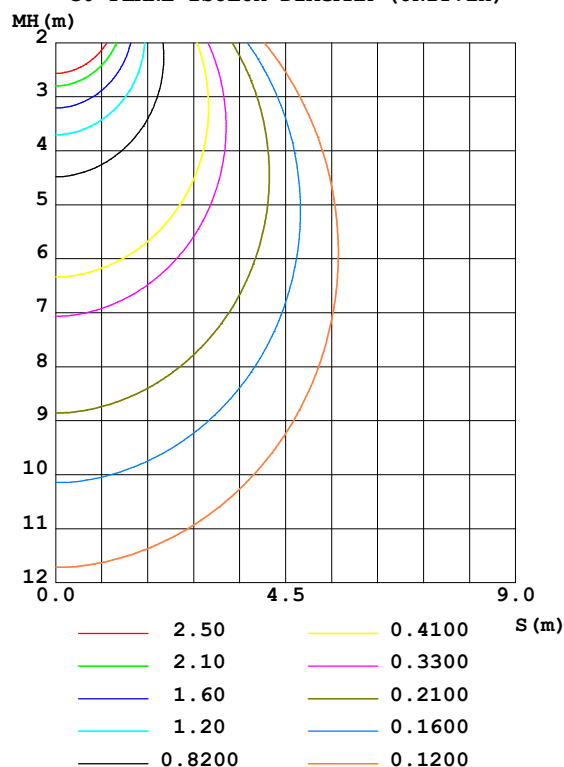
Test:U:24.00V I:0.2362A P:5.669W PF:1.000 Freq:50.00Hz Lamp Flux:46.3872x1 lm		
NAME: SF15-24V-5050-70-SPI3-RGB-R	TYPE: 硅胶	WEIGHT:
SPEC.:	DIM.: 21mm*11.5mm	SERIAL No.:2021122901
MFR.: OLYMPIA	SUR.:1*0.0115	Shielding Angle:

DATA OF LAMP		PHOTOMETRIC DATA				Eff: 8.18 lm/W
MODEL	5050	I _{max} (cd)	16.47	S/MH (C0/180)	1.29	
NOMINAL POWER (W)	5	LOR (%)	100.0	S/MH (C90/270)	1.21	
RATED VOLTAGE (V)	24	TOTAL FLUX (lm)	46.387	η UP, DN (C0-180)	0.6, 48.7	
NOMINAL FLUX (lm)	46.3872	CIE CLASS	DIRECT	η UP, DN (C180-360)	0.5, 50.3	
LAMPS INSIDE	1	η up (%)	1.0	CIBSE SHR NOM	1.25	
TEST VOLTAGE (V)	24	η down (%)	99.0	CIBSE SHR MAX	1.35	

LUMINOUS INTENSITY DISTRIBUTION DIAGRAM



C0 PLANE ISOLUX DIAGRAM (UNIT:lx)



C Range: 0 - 360DEG
C Interval: 30.0DEG
Test Speed: HIGH
Temperature: 25.3DEG
Operators: LPC
Test Date: 2021-12-29

γ Range: 0 - 120DEG
γ Interval: 1.0DEG
Test System: EVERFINE GO-2000B_V1 SYSTEM V2.0.362
Humidity: 65.0%
Test Distance: 9.200m [K=1.0000]
Remarks:

ZONAL FLUX DIAGRAM

ZONAL FLUX DIAGRAM:

γ	C0	C45	C90	C135	C180	C225	C270	C315	γ	Φ zone	Φ total	%lum, lamp
10	16.02	15.99	15.89	15.76	16.31	16.07	15.87	15.76	0- 10	1.535	1.535	3.31,3.31
20	14.96	15.02	14.90	14.87	15.59	15.18	14.76	14.78	10- 20	4.384	5.919	12.8,12.8
30	13.41	13.50	13.34	13.49	14.33	13.79	13.11	13.31	20- 30	6.598	12.52	27,27
40	11.45	11.57	11.28	11.68	12.59	12.00	10.99	11.52	30- 40	7.903	20.42	44,44
50	9.160	9.368	8.898	9.509	10.46	9.835	8.536	9.433	40- 50	8.167	28.59	61.6,61.6
60	6.651	6.930	6.289	7.081	8.028	7.395	5.883	7.058	50- 60	7.366	35.95	77.5,77.5
70	4.018	4.365	3.576	4.485	5.405	4.784	3.189	4.551	60- 70	5.630	41.58	89.6,89.6
80	1.580	1.852	1.094	1.970	2.762	2.199	0.8109	2.053	70- 80	3.265	44.85	96.7,96.7
90	0.3574	0.3343	0.2336	0.3945	0.7779	0.4199	0.0352	0.3570	80- 90	1.059	45.91	99,99
100	0.1852	0.2080	0.1558	0.2089	0.1825	0.1594	0.0402	0.1436	90-100	0.2399	46.15	99.5,99.5
110	0.1831	0.1500	0.0850	0.1407	0.0995	0.1119	0.0452	0.1390	100-110	0.1553	46.30	99.8,99.8
120	0.1809	0.0179	0.0142	0.0235	0.0166	0.0186	0.0704	0.0292	110-120	0.0830	46.38	100,100
130	0	0	0	0	0	0	0	0	120-130	0.0026	46.39	100,100
140	0	0	0	0	0	0	0	0	130-140	0	46.39	100,100
150	0	0	0	0	0	0	0	0	140-150	0	46.39	100,100
160	0	0	0	0	0	0	0	0	150-160	0	46.39	100,100
170	0	0	0	0	0	0	0	0	160-170	0	46.39	100,100
180	0	0	0	0	0	0	0	0	170-180	0	46.39	100,100
DEG	LUMINOUS INTENSITY:cd									UNIT:lm		

Conical surface Flux(90deg): 24.538 lm

%lum = 52.9%

%lamp = 52.9%

Conical surface Flux(120deg): 35.952 lm

%lum = 77.5%

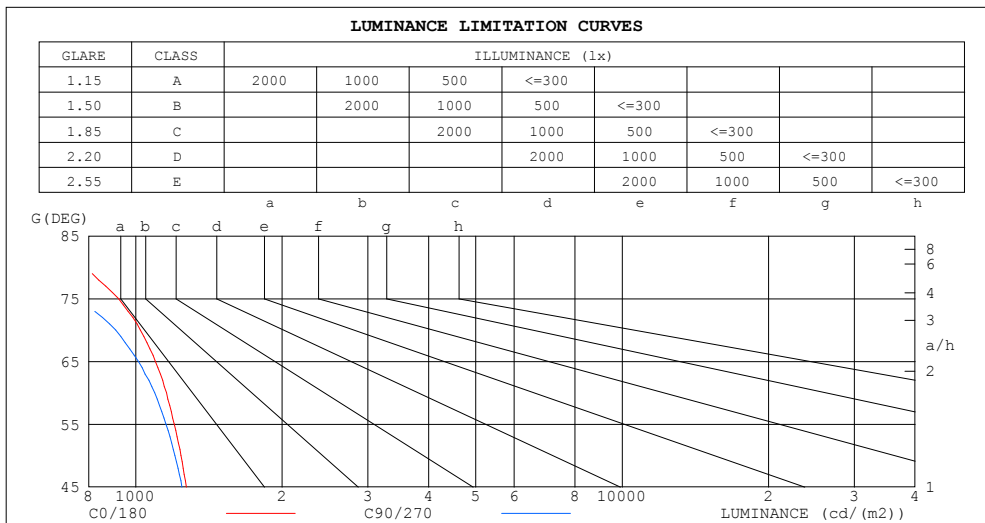
%lamp = 77.5%

C Range: 0 - 360DEG
 C Interval: 30.0DEG
 Test Speed: HIGH
 Temperature:25.3DEG
 Operators:LPC
 Test Date:2021-12-29

γ Range: 0 - 120DEG
 γ Interval: 1.0DEG
 Test System:EVERFINE GO-2000B_V1 SYSTEM V2.0.362
 Humidity:65.0%
 Test Distance:9.200m [K=1.0000]
 Remarks:

LUMINANCE LIMITATION CURVES

Test:U:24.00V I:0.2362A P:5.669W PF:1.000 Freq:50.00Hz Lamp Flux:46.3872x1 lm		
NAME: SF15-24V-5050-70-SPI3-RGB-R	TYPE: 硅胶	WEIGHT:
SPEC.:	DIM.: 21mm*11.5mm	SERIAL No.:2021122901
MFR.: OLYMPIA	SUR.:1*0.0115	Shielding Angle:



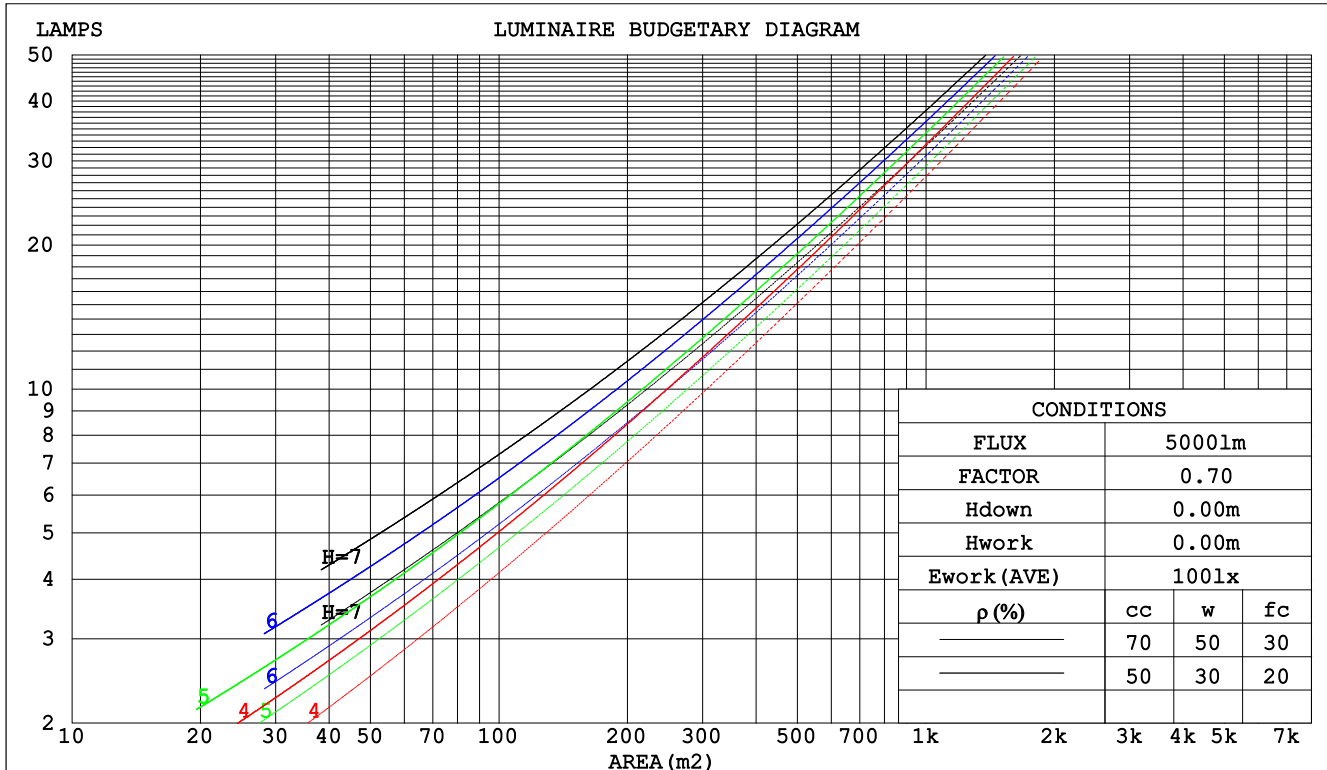
C Range: 0 - 360DEG
C Interval: 30.0DEG
Test Speed: HIGH
Temperature:25.3DEG
Operators:LPC
Test Date:2021-12-29

γ Range: 0 - 120DEG
γ Interval: 1.0DEG
Test System:EVERFINE GO-2000B_V1 SYSTEM V2.0.362
Humidity:65.0%
Test Distance:9.200m [K=1.0000]
Remarks:

CU AND LUMINAIRE BUDGETARY ESTIMATE DIAGRAM

Test:U:24.00V I:0.2362A P:5.669W PF:1.000 Freq:50.00Hz Lamp Flux:46.3872x1 lm		
NAME: SF15-24V-5050-70-SPI3-RGB-R	TYPE: 硅胶	WEIGHT:
SPEC.:	DIM.: 21mm*11.5mm	SERIAL No.:2021122901
MFR.: OLYMPIA	SUR.:1*0.0115	Shielding Angle:

pcc	80%			70%			50%			30%			10%			0
pw	50%	30%	10%	50%	30%	10%	50%	30%	10%	50%	30%	10%	50%	30%	10%	0
pfc	20%			20%			20%			20%			20%			0
RCR	RCR:Room Cavity Ratio						Coefficients of Utilization(CU)									
0.0	1.19	1.19	1.19	1.16	1.16	1.16	1.11	1.11	1.11	1.06	1.06	1.06	1.01	1.01	1.01	.99
1.0	1.03	.99	.95	1.01	.97	.93	.97	.93	.90	.92	.90	.87	.89	.87	.85	.82
2.0	.90	.83	.77	.88	.82	.76	.84	.79	.74	.81	.76	.72	.78	.74	.71	.68
3.0	.79	.71	.64	.77	.70	.64	.74	.68	.62	.71	.66	.61	.69	.64	.60	.58
4.0	.70	.61	.54	.69	.60	.54	.66	.59	.53	.63	.57	.52	.61	.56	.51	.49
5.0	.62	.53	.47	.61	.53	.46	.59	.52	.46	.57	.50	.45	.55	.49	.45	.42
6.0	.56	.47	.41	.55	.47	.41	.53	.46	.40	.51	.45	.40	.50	.44	.39	.37
7.0	.51	.42	.36	.50	.42	.36	.48	.41	.35	.47	.40	.35	.45	.39	.35	.33
8.0	.46	.38	.32	.46	.38	.32	.44	.37	.32	.43	.36	.31	.42	.36	.31	.29
9.0	.43	.34	.29	.42	.34	.29	.41	.34	.29	.40	.33	.28	.39	.33	.28	.26
10.0	.39	.31	.26	.39	.31	.26	.38	.31	.26	.37	.30	.26	.36	.30	.26	.24



C Range: 0 - 360DEG
 C Interval: 30.0DEG
 Test Speed: HIGH
 Temperature:25.3DEG
 Operators:LPC
 Test Date:2021-12-29

γ Range: 0 - 120DEG
 γ Interval: 1.0DEG
 Test System:EVERFINE GO-2000B_V1 SYSTEM V2.0.362
 Humidity:65.0%
 Test Distance:9.200m [K=1.0000]
 Remarks:

WEC AND CCEC

Test:U:24.00V I:0.2362A P:5.669W PF:1.000 Freq:50.00Hz Lamp Flux:46.3872x1 lm		
NAME: SF15-24V-5050-70-SPI3-RGB-R	TYPE: 硅胶	WEIGHT:
SPEC.:	DIM.: 21mm*11.5mm	SERIAL No.:2021122901
MFR.: OLYMPIA	SUR.:1*0.0115	Shielding Angle:

pcc	80%			70%			50%			30%			10%			0	
pw	50%	30%	10%	50%	30%	10%	50%	30%	10%	50%	30%	10%	50%	30%	10%	0	
pfc	20%			20%			20%			20%			20%			0	
RCR	RCR:Room Cavity Ratio						Wall Exitance Coeffcients(WEC)										
0.0																	
1.0	.314	.178	.057	.306	.175	.056	.292	.168	.054	.280	.161	.052	.268	.155	.050		
2.0	.293	.161	.049	.287	.158	.049	.275	.153	.047	.263	.148	.046	.253	.143	.045		
3.0	.271	.144	.043	.265	.142	.043	.254	.138	.042	.244	.134	.041	.235	.130	.040		
4.0	.250	.130	.038	.244	.128	.038	.235	.125	.037	.226	.121	.037	.217	.118	.036		
5.0	.230	.117	.034	.226	.116	.034	.217	.113	.033	.209	.110	.033	.202	.108	.032		
6.0	.214	.107	.031	.210	.106	.030	.202	.103	.030	.195	.101	.030	.188	.099	.029		
7.0	.199	.098	.028	.195	.097	.028	.188	.095	.027	.182	.093	.027	.176	.091	.027		
8.0	.186	.091	.025	.182	.090	.025	.176	.088	.025	.170	.086	.025	.165	.085	.025		
9.0	.174	.084	.023	.171	.083	.023	.165	.082	.023	.160	.080	.023	.155	.079	.023		
10.0	.163	.078	.022	.161	.078	.022	.156	.076	.021	.151	.075	.021	.147	.074	.021		

pcc	80%			70%			50%			30%			10%			0
pw	50%	30%	10%	50%	30%	10%	50%	30%	10%	50%	30%	10%	50%	30%	10%	0
pfc	20%			20%			20%			20%			20%			0
RCR	RCR:Room Cavity Ratio						Ceiling Cavity Exitance Coefficients(CCEC)									
0.0	.198	.198	.198	.170	.170	.170	.116	.116	.116	.066	.066	.066	.021	.021	.021	
1.0	.189	.164	.142	.161	.141	.122	.110	.097	.085	.064	.056	.049	.020	.018	.016	
2.0	.180	.140	.106	.155	.120	.091	.106	.083	.064	.061	.048	.037	.020	.016	.012	
3.0	.173	.122	.082	.148	.106	.071	.102	.073	.050	.059	.043	.029	.019	.014	.010	
4.0	.165	.109	.066	.142	.094	.058	.097	.066	.041	.056	.038	.024	.018	.013	.008	
5.0	.158	.099	.055	.135	.085	.048	.093	.060	.034	.054	.035	.020	.017	.011	.007	
6.0	.150	.090	.047	.129	.078	.041	.089	.055	.029	.052	.032	.017	.017	.011	.006	
7.0	.144	.083	.041	.123	.072	.036	.085	.051	.026	.050	.030	.015	.016	.010	.005	
8.0	.137	.078	.037	.118	.067	.032	.082	.047	.023	.048	.028	.014	.015	.009	.005	
9.0	.131	.073	.033	.113	.063	.029	.078	.044	.021	.046	.026	.012	.015	.009	.004	
10.0	.125	.068	.031	.108	.059	.027	.075	.042	.019	.044	.025	.011	.014	.008	.004	

C Range: 0 - 360DEG
C Interval: 30.0DEG
Test Speed: HIGH
Temperature:25.3DEG
Operators:LPC
Test Date:2021-12-29

γ Range: 0 - 120DEG
γ Interval: 1.0DEG
Test System:EVERFINE GO-2000B_V1 SYSTEM V2.0.362
Humidity:65.0%
Test Distance:9.200m [K=1.0000]
Remarks:

UGR(Unified Glare Rating) Table

Test:U:24.00V I:0.2362A P:5.669W PF:1.000 Freq:50.00Hz Lamp Flux:46.3872x1 lm											
NAME: SF15-24V-5050-70-SPI3-RGB-R						TYPE:硅胶			WEIGHT:		
SPEC.:						DIM.: 21mm*11.5mm			SERIAL No.:2021122901		
MFR.: OLYMPIA						SUR.:1*0.0115			Shielding Angle:		
ceiling/cavity	0.7	0.7	0.5	0.5	0.3	0.7	0.7	0.5	0.5	0.3	
walls	0.5	0.3	0.5	0.3	0.3	0.5	0.3	0.5	0.3	0.3	
working plane	0.2	0.2	0.2	0.2	0.2	0.2	0.2	0.2	0.2	0.2	
Room dimensions		Viewed crosswise					Viewed endwise				
x = 2H y = 2H	24.1	25.6	24.3	25.8	26.0	24.0	25.5	24.3	25.7	25.9	
	3H	25.5	26.9	25.8	27.2	27.4	25.3	26.7	25.6	27.0	27.2
	4H	26.1	27.4	26.4	27.6	27.9	25.8	27.1	26.1	27.4	27.7
	6H	26.4	27.7	26.8	27.9	28.2	26.0	27.3	26.4	27.6	27.9
	8H	26.5	27.7	26.9	28.0	28.3	26.1	27.3	26.4	27.6	27.9
	12H	26.6	27.8	27.0	28.1	28.4	26.0	27.2	26.4	27.5	27.8
4H	2H	24.7	26.0	25.0	26.3	26.6	24.6	26.0	25.0	26.2	26.5
	3H	26.3	27.5	26.7	27.8	28.1	26.2	27.4	26.6	27.7	28.0
	4H	27.0	28.1	27.4	28.4	28.8	26.9	27.9	27.3	28.3	28.6
	6H	27.5	28.4	27.9	28.8	29.2	27.2	28.2	27.7	28.6	29.0
	8H	27.6	28.5	28.1	28.9	29.3	27.3	28.2	27.8	28.6	29.0
	12H	27.8	28.6	28.2	29.0	29.4	27.3	28.1	27.8	28.5	29.0
8H	4H	27.3	28.2	27.7	28.6	29.0	27.2	28.1	27.6	28.5	28.9
	6H	27.9	28.7	28.4	29.1	29.5	27.8	28.5	28.2	28.9	29.4
	8H	28.2	28.8	28.6	29.3	29.7	27.9	28.6	28.4	29.0	29.5
	12H	28.4	28.9	28.9	29.4	29.9	28.0	28.6	28.5	29.0	29.5
12H	4H	27.3	28.1	27.8	28.5	29.0	27.2	28.0	27.6	28.4	28.8
	6H	28.0	28.6	28.5	29.1	29.6	27.8	28.5	28.3	28.9	29.4
	8H	28.3	28.8	28.8	29.3	29.8	28.1	28.6	28.6	29.1	29.6
Variations with the observer position at spacings:											
S = 1.0H	+ 0.2 / - 0.2					+ 0.2 / - 0.2					
1.5H	+ 0.2 / - 0.3					+ 0.2 / - 0.4					
2.0H	+ 0.2 / - 0.3					+ 0.2 / - 0.4					

CIE Pub.117, 46.39 lm Total Lamp Luminous Flux Correct (8log(F/F0) = -10.7)

C Range: 0 - 360DEG
C Interval: 30.0DEG
Test Speed: HIGH
Temperature:25.3DEG
Operators:LPC
Test Date:2021-12-29

γ Range: 0 - 120DEG
γ Interval: 1.0DEG
Test System:EVERFINE GO-2000B_V1 SYSTEM V2.0.362
Humidity:65.0%
Test Distance:9.200m [K=1.0000]
Remarks:

UTILIZATION FACTORS TABLE

Test:U:24.00V I:0.2362A P:5.669W PF:1.000 Freq:50.00Hz Lamp Flux:46.3872x1 lm		
NAME: SF15-24V-5050-70-SPI3-RGB-R	TYPE: 硅胶	WEIGHT:
SPEC.:	DIM.: 21mm*11.5mm	SERIAL No.:2021122901
MFR.: OLYMPIA	SUR.:1*0.0115	Shielding Angle:

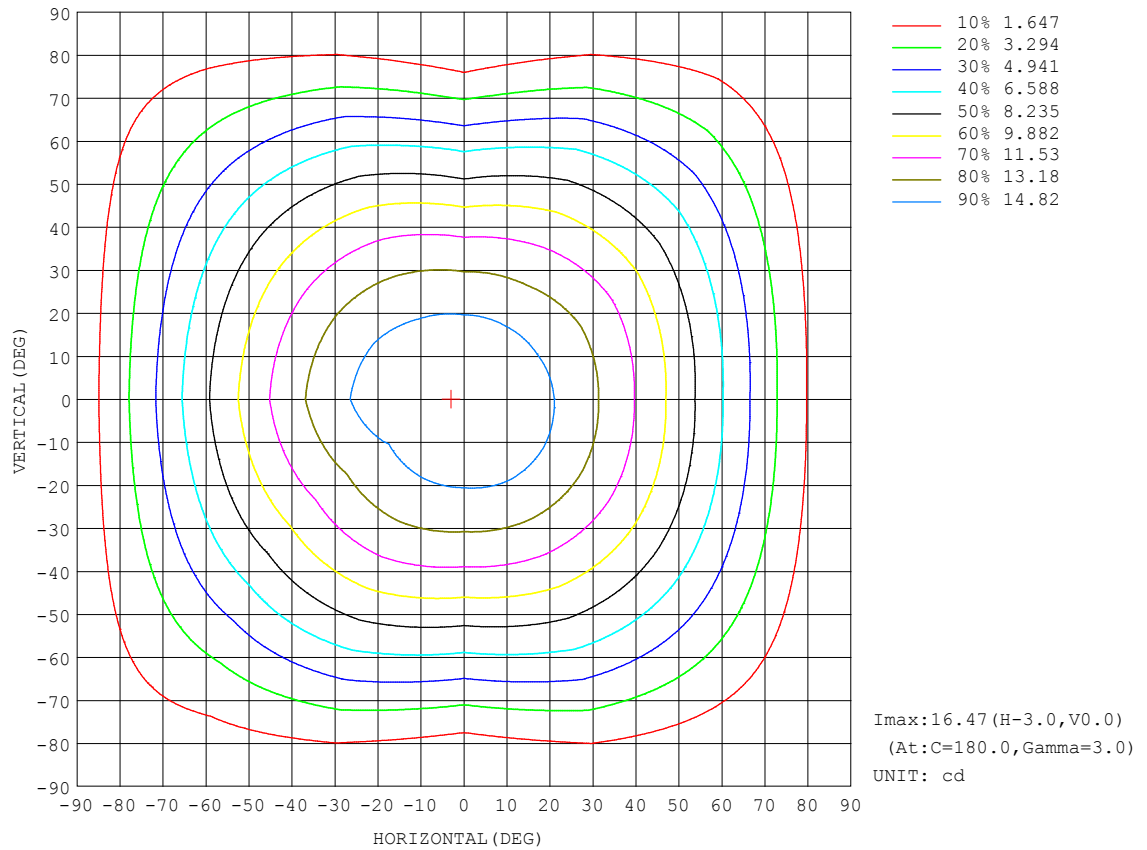
REFLECTANCE										
Ceiling	0.8	0.8	0.8	0.7	0.7	0.7	0.5	0.5	0.5	0
Walls	0.7	0.5	0.3	0.7	0.5	0.3	0.7	0.5	0.3	0
Working plane	0.2	0.2	0.2	0.2	0.2	0.2	0.2	0.2	0.2	0
ROOM INDEX	UTILIZATION FACTORS (PERCENT) $k(RI) \times RCR = 5$									
$k = 0.60$	57	45	38	56	45	38	55	45	38	32
0.80	67	55	48	66	55	48	64	54	47	40
1.00	75	64	57	74	64	57	72	65	56	49
1.25	83	72	65	81	71	64	78	70	63	56
1.50	88	77	70	86	77	70	83	75	69	61
2.00	94	86	79	92	84	78	89	82	77	69
2.50	98	90	84	96	89	83	92	86	81	73
3.00	102	95	89	99	93	88	95	90	86	77
4.00	106	100	95	103	98	94	99	95	91	82
5.00	108	103	99	106	101	97	101	97	94	85
ROOM INDEX	UF (total)									Direct
According to DIN EN 13032-2 2004			Suspended					SHRNOM = 1.25		

C Range: 0 - 360DEG
C Interval: 30.0DEG
Test Speed: HIGH
Temperature:25.3DEG
Operators:LPC
Test Date:2021-12-29

γ Range: 0 - 120DEG
 γ Interval: 1.0DEG
Test System:EVERFINE GO-2000B_V1 SYSTEM V2.0.362
Humidity:65.0%
Test Distance:9.200m [K=1.0000]
Remarks:

ISOCANDELA DIAGRAM

Test:U:24.00V I:0.2362A P:5.669W PF:1.000 Freq:50.00Hz Lamp Flux:46.3872x1 lm		
NAME: SF15-24V-5050-70-SPI3-RGB-R	TYPE: 硅胶	WEIGHT:
SPEC.:	DIM.: 21mm*11.5mm	SERIAL No.:2021122901
MFR.: OLYMPIA	SUR.:1*0.0115	Shielding Angle:

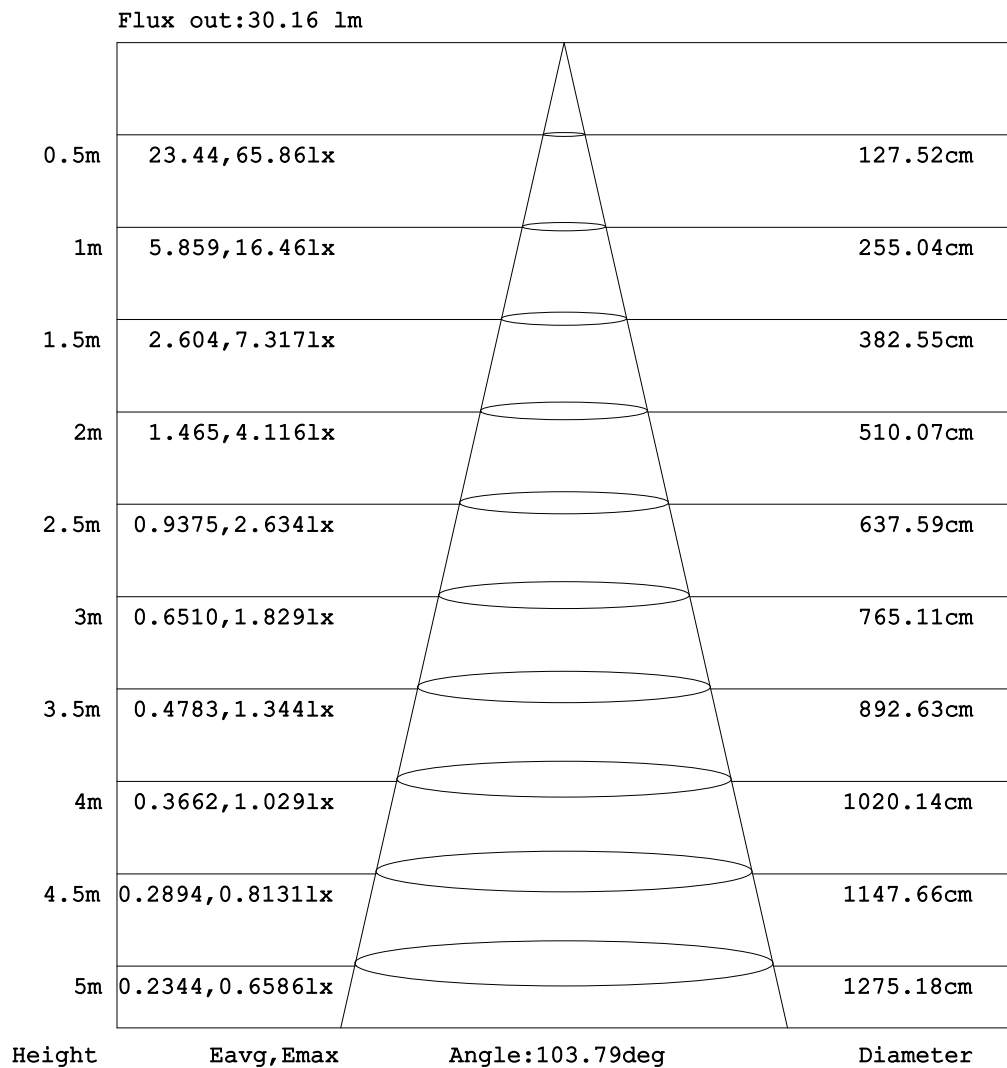


C Range: 0 - 360DEG
C Interval: 30.0DEG
Test Speed: HIGH
Temperature:25.3DEG
Operators:LPC
Test Date:2021-12-29

γ Range: 0 - 120DEG
 γ Interval: 1.0DEG
Test System:EVERFINE GO-2000B_V1 SYSTEM V2.0.362
Humidity:65.0%
Test Distance:9.200m [K=1.0000]
Remarks:

AAI Figure

Test:U:24.00V I:0.2362A P:5.669W PF:1.000 Freq:50.00Hz Lamp Flux:46.3872x1 lm		
NAME: SF15-24V-5050-70-SPI3-RGB-R	TYPE: 硅胶	WEIGHT:
SPEC.:	DIM.: 21mm*11.5mm	SERIAL No.:2021122901
MFR.: OLYMPIA	SUR.:1*0.0115	Shielding Angle:



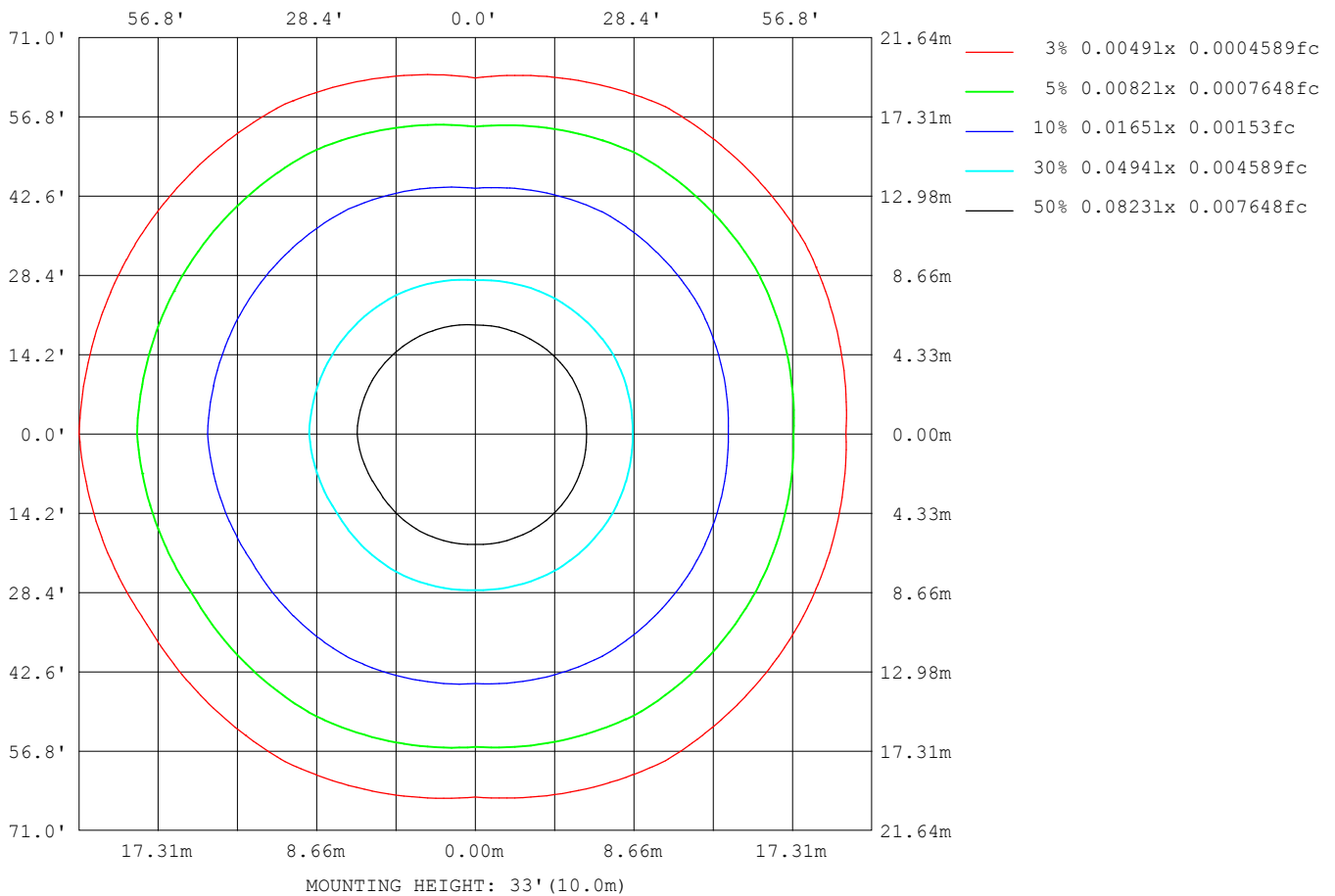
Note: The Curves indicate the illuminated area and the average illumination when the luminaire is at different distance.

C Range: 0 - 360DEG
 C Interval: 30.0DEG
 Test Speed: HIGH
 Temperature: 25.3DEG
 Operators: LPC
 Test Date: 2021-12-29

γ Range: 0 - 120DEG
 γ Interval: 1.0DEG
 Test System: EVERFINE GO-2000B_V1 SYSTEM V2.0.362
 Humidity: 65.0%
 Test Distance: 9.200m [K=1.0000]
 Remarks:

ISOLUX DIAGRAM

Test:U:24.00V I:0.2362A P:5.669W PF:1.000 Freq:50.00Hz Lamp Flux:46.3872x1 lm		
NAME: SF15-24V-5050-70-SPI3-RGB-R	TYPE: 硅胶	WEIGHT:
SPEC.:	DIM.: 21mm*11.5mm	SERIAL No.:2021122901
MFR.: OLYMPIA	SUR.:1*0.0115	Shielding Angle:



C Range: 0 - 360DEG
C Interval: 30.0DEG
Test Speed: HIGH
Temperature:25.3DEG
Operators:LPC
Test Date:2021-12-29

γ Range: 0 - 120DEG
 γ Interval: 1.0DEG
Test System:EVERFINE GO-2000B_V1 SYSTEM V2.0.362
Humidity:65.0%
Test Distance:9.200m [K=1.0000]
Remarks:

LED Avg.L Report

Test:U:24.00V I:0.2362A P:5.669W PF:1.000 Freq:50.00Hz Lamp Flux:46.3872x1 lm		
NAME: SF15-24V-5050-70-SPI3-RGB-R	TYPE:硅胶	WEIGHT:
SPEC.:	DIM.: 21mm*11.5mm	SERIAL No.:2021122901
MFR.: OLYMPIA	SUR.:1*0.0115	Shielding Angle:

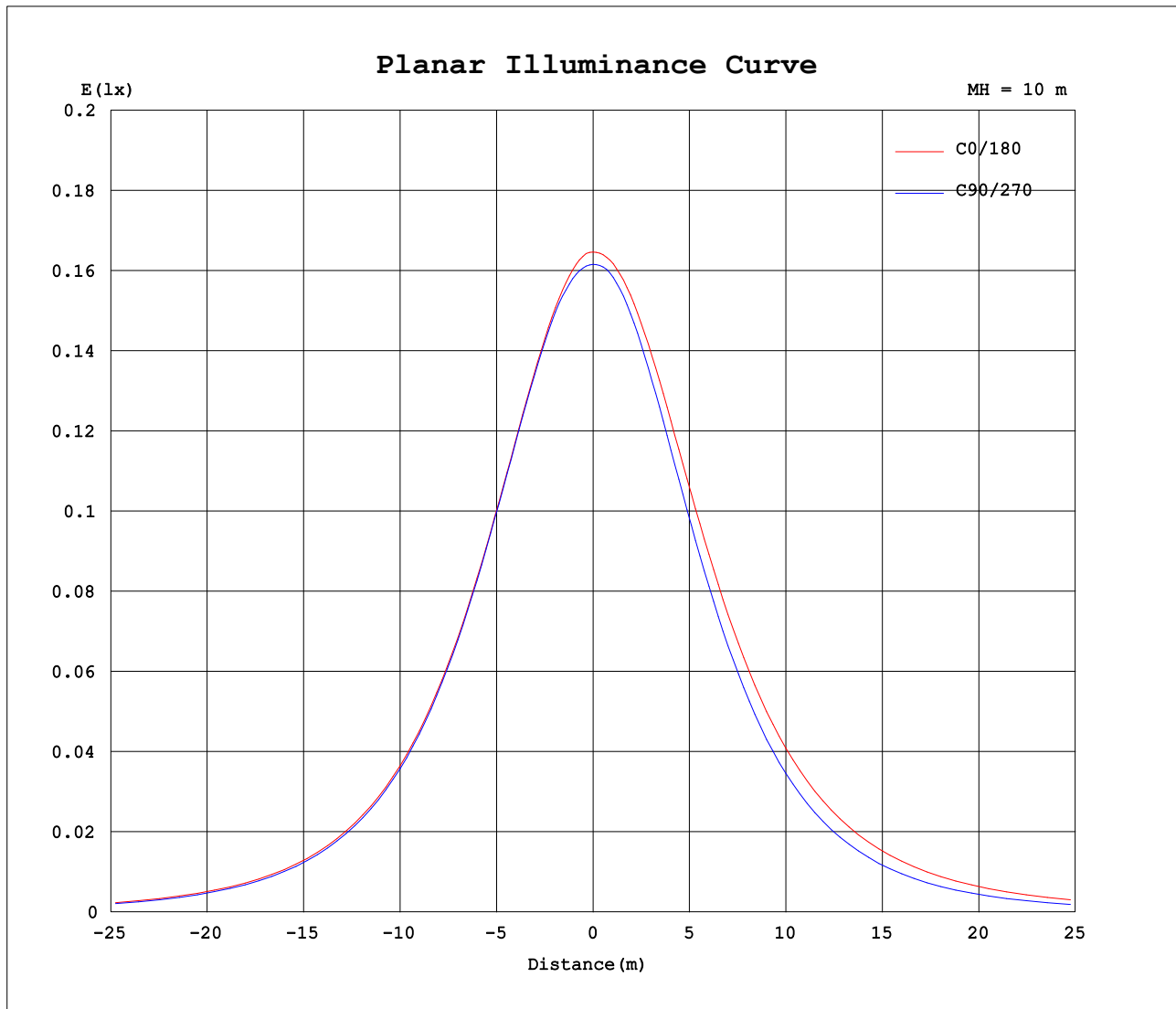
AvgL	cd/m2
L_0~180 (65) av	1241
L_0~180 (75) av	1142
L_0~180 (85) av	1208
L_90~270 (65) av	970
L_90~270 (75) av	703
L_90~270 (85) av	211
L_45 (65) av	1216
L_45 (75) av	1115
L_45 (85) av	1023

Standard: GB/T 29293-2012

C Range: 0 - 360DEG
C Interval: 30.0DEG
Test Speed: HIGH
Temperature:25.3DEG
Operators:LPC
Test Date:2021-12-29

γ Range: 0 - 120DEG
γ Interval: 1.0DEG
Test System:EVERFINE GO-2000B_V1 SYSTEM V2.0.362
Humidity:65.0%
Test Distance:9.200m [K=1.0000]
Remarks:

Planar Illuminance Curve



C Range: 0 - 360DEG
C Interval: 30.0DEG
Test Speed: HIGH
Temperature: 25.3DEG
Operators: LPC
Test Date: 2021-12-29

γ Range: 0 - 120DEG
 γ Interval: 1.0DEG
Test System: EVERFINE GO-2000B_V1 SYSTEM V2.0.362
Humidity: 65.0%
Test Distance: 9.200m [K=1.0000]
Remarks:

LUMINOUS DISTRIBUTION INTENSITY DATA

Test:U:24.00V I:0.2362A P:5.669W PF:1.000 Freq:50.00Hz Lamp Flux:46.3872x1 lm		
NAME: SF15-24V-5050-70-SPI3-RGB-R	TYPE: 硅胶	WEIGHT:
SPEC.:	DIM.: 21mm*11.5mm	SERIAL No.:2021122901
MFR.: OLYMPIA	SUR.:1*0.0115	Shielding Angle:

Table--1

UNIT: cd

C (DEG) γ (DEG)	0	30	60	90	120	150	180	210	240	270	300	330							
0	16.5	16.4	16.3	16.2	16.1	16.0	16.5	16.4	16.3	16.2	16.1	16.0							
5	16.3	16.2	16.2	16.1	16.0	15.9	16.5	16.4	16.2	16.1	16.0	16.0							
10	16.0	16.0	16.0	15.9	15.8	15.7	16.3	16.2	16.0	15.9	15.8	15.7							
15	15.6	15.6	15.6	15.5	15.4	15.3	16.0	15.8	15.6	15.4	15.3	15.4							
20	15.0	15.0	15.0	14.9	14.9	14.8	15.6	15.4	15.0	14.8	14.8	14.8							
25	14.2	14.3	14.3	14.2	14.2	14.2	15.0	14.8	14.3	14.0	14.0	14.2							
30	13.4	13.5	13.5	13.3	13.5	13.5	14.3	14.0	13.6	13.1	13.2	13.4							
35	12.5	12.6	12.5	12.4	12.6	12.6	13.5	13.2	12.7	12.1	12.3	12.6							
40	11.4	11.6	11.6	11.3	11.7	11.7	12.6	12.2	11.8	11.0	11.4	11.7							
45	10.3	10.5	10.5	10.1	10.6	10.6	11.6	11.2	10.7	9.79	10.4	10.6							
50	9.16	9.36	9.38	8.90	9.49	9.53	10.5	10.1	9.59	8.54	9.35	9.52							
55	7.92	8.14	8.21	7.61	8.31	8.34	9.28	8.89	8.42	7.24	8.19	8.36							
60	6.65	6.87	6.99	6.29	7.06	7.10	8.03	7.62	7.17	5.88	6.99	7.13							
65	5.34	5.60	5.74	4.92	5.77	5.82	6.73	6.34	5.89	4.51	5.75	5.89							
70	4.02	4.27	4.46	3.58	4.47	4.51	5.40	5.00	4.57	3.19	4.48	4.62							
75	2.74	2.98	3.19	2.28	3.16	3.21	4.06	3.68	3.24	1.90	3.21	3.35							
80	1.58	1.75	1.96	1.09	1.93	2.01	2.76	2.41	1.98	0.81	1.98	2.13							
85	0.79	0.83	0.90	0.33	0.91	1.06	1.63	1.34	0.91	0.10	0.89	1.09							
90	0.36	0.34	0.33	0.23	0.34	0.45	0.78	0.59	0.25	0.04	0.25	0.47							
95	0.20	0.24	0.22	0.17	0.26	0.22	0.28	0.23	0.17	0.04	0.15	0.20							
100	0.19	0.21	0.21	0.16	0.24	0.18	0.18	0.17	0.15	0.04	0.14	0.15							
105	0.18	0.16	0.20	0.12	0.22	0.14	0.14	0.13	0.14	0.04	0.14	0.15							
110	0.18	0.11	0.19	0.09	0.18	0.10	0.10	0.09	0.13	0.05	0.13	0.15							
115	0.18	0.07	0.10	0.05	0.11	0.06	0.06	0.06	0.08	0.05	0.08	0.13							
120	0.18	0.02	0.02	0.01	0.03	0.02	0.02	0.02	0.02	0.07	0.02	0.04							
125	0.00	0.00	0.00	0.00	0.00	0.00	0.00	0.00	0.00	0.00	0.00	0.00							
130	0.00	0.00	0.00	0.00	0.00	0.00	0.00	0.00	0.00	0.00	0.00	0.00							
135	0.00	0.00	0.00	0.00	0.00	0.00	0.00	0.00	0.00	0.00	0.00	0.00							
140	0.00	0.00	0.00	0.00	0.00	0.00	0.00	0.00	0.00	0.00	0.00	0.00							
145	0.00	0.00	0.00	0.00	0.00	0.00	0.00	0.00	0.00	0.00	0.00	0.00							
150	0.00	0.00	0.00	0.00	0.00	0.00	0.00	0.00	0.00	0.00	0.00	0.00							
155	0.00	0.00	0.00	0.00	0.00	0.00	0.00	0.00	0.00	0.00	0.00	0.00							
160	0.00	0.00	0.00	0.00	0.00	0.00	0.00	0.00	0.00	0.00	0.00	0.00							
165	0.00	0.00	0.00	0.00	0.00	0.00	0.00	0.00	0.00	0.00	0.00	0.00							
170	0.00	0.00	0.00	0.00	0.00	0.00	0.00	0.00	0.00	0.00	0.00	0.00							
175	0.00	0.00	0.00	0.00	0.00	0.00	0.00	0.00	0.00	0.00	0.00	0.00							
180	0.00	0.00	0.00	0.00	0.00	0.00	0.00	0.00	0.00	0.00	0.00	0.00							

C Range: 0 - 360DEG
C Interval: 30.0DEG
Test Speed: HIGH
Temperature:25.3DEG
Operators:LPC
Test Date:2021-12-29

γ Range: 0 - 120DEG
γ Interval: 1.0DEG
Test System:EVERFINE GO-2000B_V1 SYSTEM V2.0.362
Humidity:65.0%
Test Distance:9.200m [K=1.0000]
Remarks:

Photometric Data Table [cd]

G/C	0.0	30.0	60.0	90.0	120.0	150.0	180.0	210.0	240.0	270.0
0.0	16.46	16.36	16.27	16.16	16.06	15.98	16.46	16.36	16.27	16.16
3.0	16.42	16.30	16.27	16.13	16.06	15.96	16.47	16.37	16.23	16.16
6.0	16.28	16.20	16.20	16.06	16.01	15.88	16.44	16.34	16.15	16.09
9.0	16.09	16.04	16.07	15.94	15.88	15.74	16.36	16.23	16.04	15.94
12.0	15.85	15.83	15.88	15.74	15.70	15.56	16.21	16.06	15.81	15.70
15.0	15.56	15.57	15.61	15.48	15.43	15.33	16.02	15.84	15.55	15.39
18.0	15.21	15.26	15.27	15.15	15.13	15.07	15.78	15.58	15.23	15.04
21.0	14.82	14.90	14.89	14.77	14.77	14.75	15.48	15.24	14.86	14.61
24.0	14.40	14.48	14.46	14.35	14.38	14.38	15.14	14.89	14.47	14.17
27.0	13.93	14.01	13.99	13.87	13.96	13.97	14.75	14.47	14.03	13.64
30.0	13.41	13.52	13.47	13.34	13.49	13.50	14.33	14.03	13.56	13.11
33.0	12.86	12.97	12.91	12.77	12.98	13.01	13.86	13.54	13.06	12.50
36.0	12.27	12.40	12.34	12.14	12.44	12.45	13.33	13.00	12.51	11.88
39.0	11.66	11.80	11.76	11.52	11.87	11.89	12.79	12.43	11.94	11.21
42.0	11.01	11.17	11.14	10.84	11.26	11.30	12.19	11.84	11.35	10.51
45.0	10.34	10.50	10.50	10.11	10.62	10.65	11.57	11.21	10.72	9.787
48.0	9.632	9.828	9.842	9.401	9.948	9.999	10.92	10.55	10.05	9.043
51.0	8.918	9.119	9.169	8.647	9.270	9.305	10.23	9.848	9.365	8.275
54.0	8.169	8.391	8.456	7.878	8.551	8.592	9.516	9.139	8.657	7.516
57.0	7.410	7.642	7.727	7.089	7.812	7.863	8.787	8.395	7.923	6.717
60.0	6.651	6.873	6.988	6.289	7.063	7.099	8.028	7.621	7.169	5.883
63.0	5.868	6.108	6.245	5.460	6.305	6.330	7.264	6.848	6.405	5.099
66.0	5.079	5.335	5.486	4.641	5.511	5.561	6.476	6.074	5.626	4.234
69.0	4.279	4.531	4.717	3.837	4.722	4.767	5.671	5.264	4.852	3.475
72.0	3.506	3.747	3.973	3.038	3.943	3.983	4.852	4.476	4.043	2.661
75.0	2.742	2.983	3.189	2.285	3.159	3.214	4.058	3.676	3.244	1.897
78.0	2.008	2.219	2.440	1.531	2.410	2.471	3.264	2.902	2.475	1.198
81.0	1.389	1.521	1.726	0.8776	1.701	1.787	2.510	2.168	1.742	0.5999
84.0	0.9113	0.9735	1.088	0.3451	1.088	1.230	1.817	1.525	1.098	0.1321
87.0	0.5690	0.5873	0.5895	0.2894	0.6196	0.7629	1.250	0.9867	0.5867	0.0554
90.0	0.3574	0.3362	0.3324	0.2336	0.3425	0.4466	0.7779	0.5891	0.2507	0.0352
93.0	0.2364	0.2503	0.2363	0.1779	0.2614	0.2760	0.4316	0.3223	0.1806	0.0352
96.0	0.1861	0.2335	0.2211	0.1616	0.2563	0.2145	0.2156	0.2063	0.1657	0.0352
99.0	0.1854	0.2167	0.2111	0.1458	0.2413	0.1898	0.1908	0.1810	0.1507	0.0352
102.0	0.1848	0.1885	0.2036	0.1417	0.2262	0.1650	0.1659	0.1574	0.1357	0.0402
105.0	0.1841	0.1602	0.1997	0.1204	0.2153	0.1403	0.1410	0.1338	0.1357	0.0402
108.0	0.1835	0.1319	0.2029	0.0992	0.2128	0.1155	0.1161	0.1102	0.1508	0.0453
111.0	0.1829	0.1036	0.1699	0.0779	0.1672	0.0908	0.0912	0.0866	0.1185	0.0452
114.0	0.1822	0.0754	0.1190	0.0567	0.1216	0.0660	0.0664	0.0630	0.0862	0.0552
117.0	0.1816	0.0471	0.0680	0.0354	0.0760	0.0413	0.0415	0.0394	0.0539	0.0553
120.0	0.1809	0.0188	0.0170	0.0142	0.0304	0.0165	0.0166	0.0157	0.0215	0.0704
G/C	300.0	330.0								
0.0	16.06	15.98								
3.0	16.04	15.98								
6.0	15.96	15.93								
9.0	15.83	15.80								
12.0	15.61	15.62								
15.0	15.33	15.36								
18.0	15.00	15.05								
21.0	14.61	14.70								
24.0	14.18	14.30								
27.0	13.69	13.89								
30.0	13.17	13.45								
33.0	12.63	12.95								
36.0	12.09	12.42								
39.0	11.57	11.85								
42.0	11.01	11.25								
45.0	10.42	10.63								
48.0	9.783	9.973								
51.0	9.124	9.300								
54.0	8.431	8.606								
57.0	7.722	7.883								
60.0	6.988	7.129								
63.0	6.254	6.405								
66.0	5.501	5.651								
69.0	4.732	4.877								
72.0	3.973	4.124								
75.0	3.214	3.350								
78.0	2.465	2.596								
81.0	1.742	1.892								
84.0	1.088	1.264								
87.0	0.5517	0.7854								
90.0	0.2458	0.4683								

C Range: 0 - 360DEG
 C Interval: 30.0DEG
 Test Speed: HIGH
 Temperature: 25.3DEG
 Operators: LPC
 Test Date: 2021-12-29

γ Range: 0 - 120DEG
 γ Interval: 1.0DEG
 Test System: EVERFINE GO-2000B_V1 SYSTEM V2.0.362
 Humidity: 65.0%
 Test Distance: 9.200m [K=1.0000]
 Remarks:

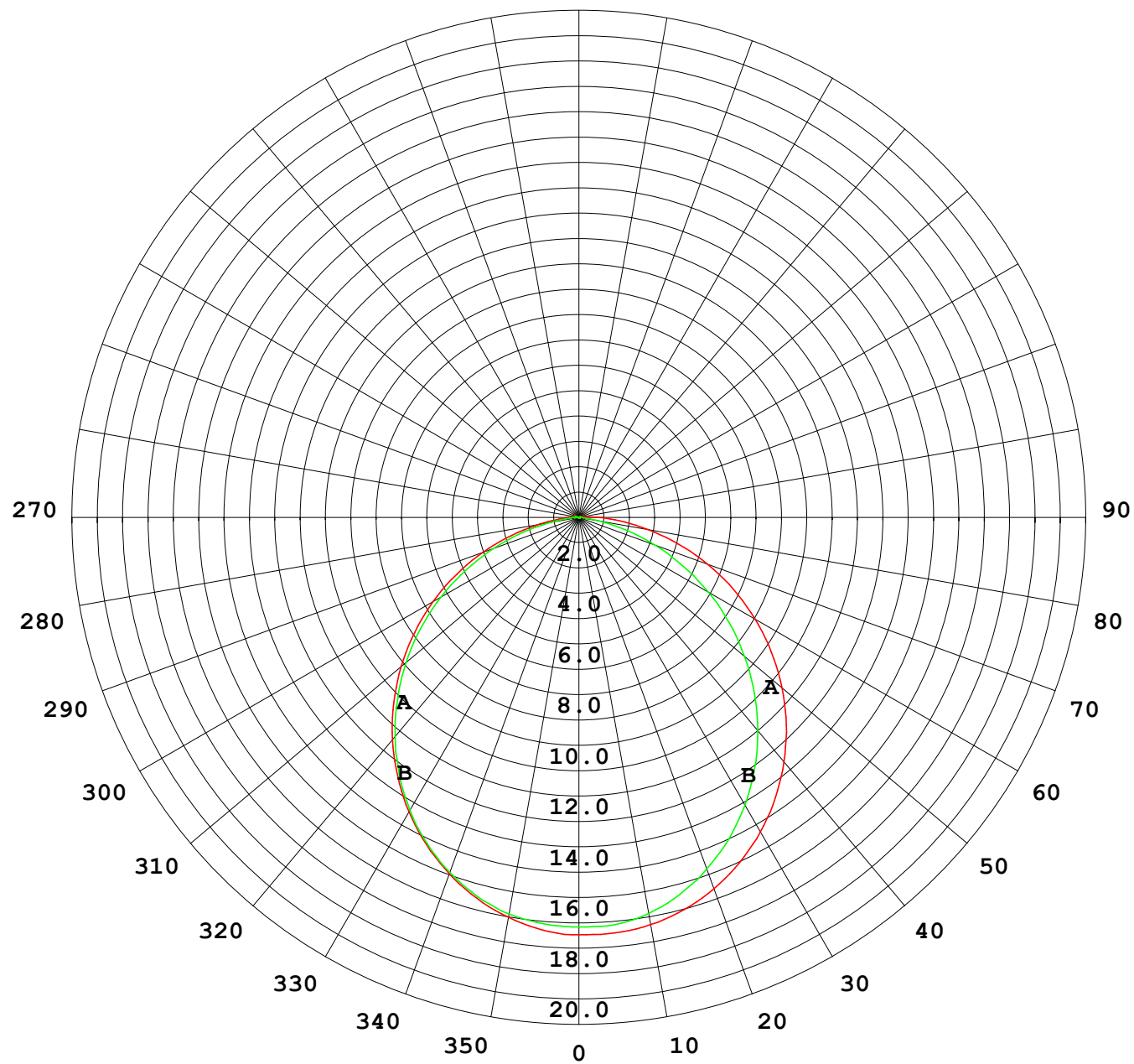
Photometric Data Table [cd]

93.0	0.1494	0.2768
96.0	0.1460	0.1761
99.0	0.1426	0.1458
102.0	0.1391	0.1458
105.0	0.1364	0.1458
108.0	0.1339	0.1458
111.0	0.1213	0.1458
114.0	0.0882	0.1458
117.0	0.0551	0.0911
120.0	0.0220	0.0364

C Range: 0 - 360DEG
C Interval: 30.0DEG
Test Speed: HIGH
Temperature: 25.3DEG
Operators: LPC
Test Date: 2021-12-29

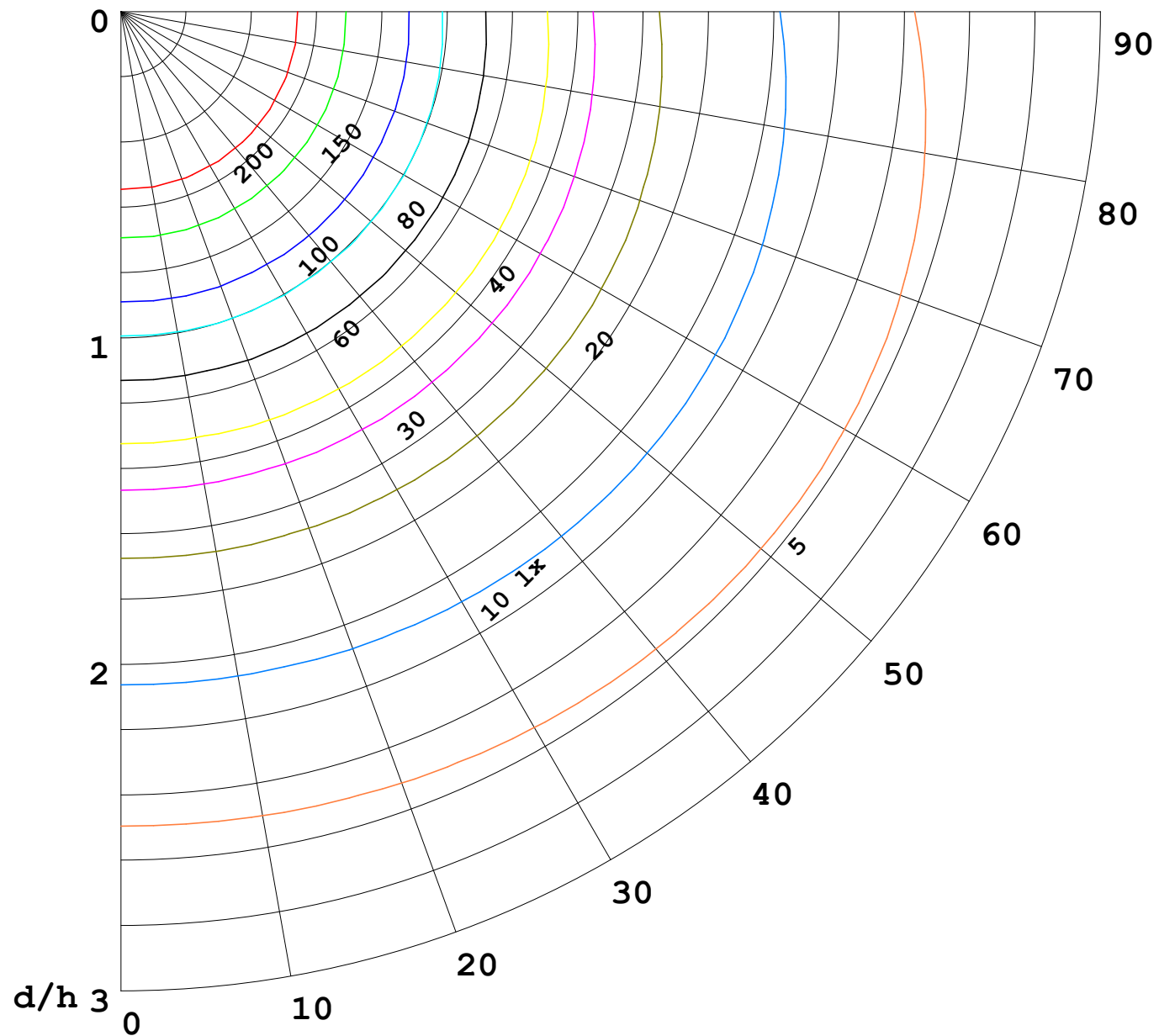
γ Range: 0 - 120DEG
γ Interval: 1.0DEG
Test System: EVERFINE GO-2000B_V1 SYSTEM V2.0.362
Humidity: 65.0%
Test Distance: 9.200m [K=1.0000]
Remarks:

I (cd)



1000 lm

$\kappa = 1$



F = 5000 lm
 K = 0.7
 Hcc = 0.0 m
 Hfc = 0.0 m
 Eave = 100 lx

	Pcc	Pw	Pfc
—	70	50	30
—	50	30	20

