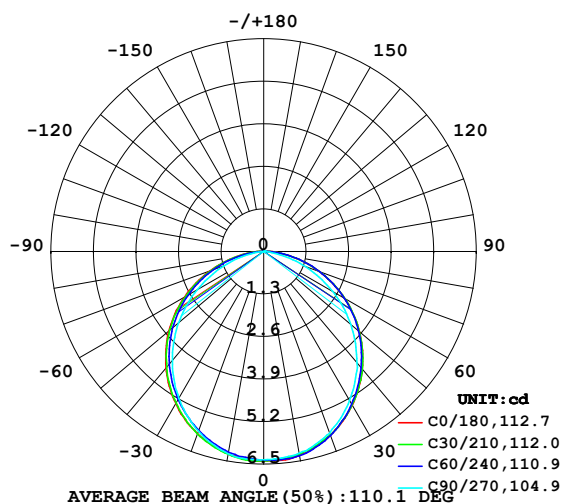


LUMINAIRE PHOTOMETRIC TEST REPORT

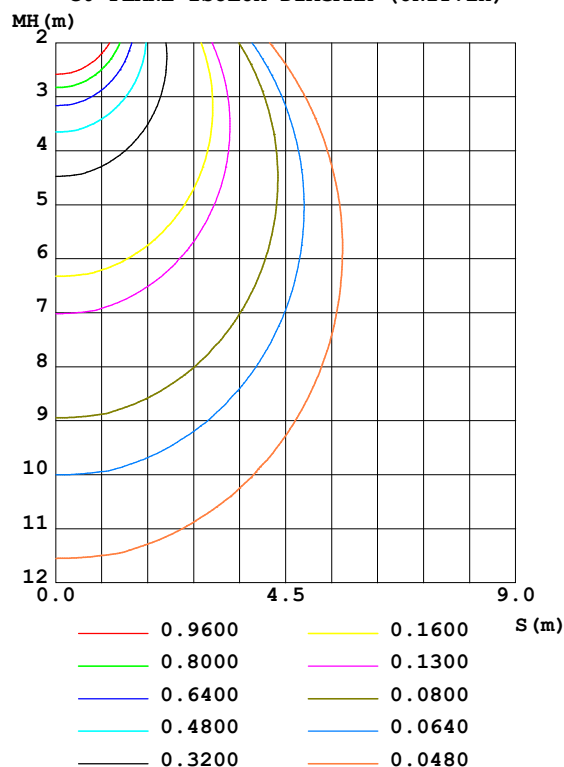
Test:U:24.00V I:0.2359A P:5.662W PF:1.000 Freq:50.00Hz Lamp Flux:18.0102x1 lm		
NAME: SF15-24V-5050-70-SPI3-RGB-B	TYPE: 硅胶	WEIGHT:
SPEC.:	DIM.: 21mm*11.5mm	SERIAL No.:2021122903
MFR.: OLYMPIA	SUR.:1*0.0115	Shielding Angle:

DATA OF LAMP		PHOTOMETRIC DATA				Eff: 3.18 lm/W
MODEL	5050	I _{max} (cd)	6.413	S/MH (C0/180)	1.25	
NOMINAL POWER (W)	5	LOR (%)	100.0	S/MH (C90/270)	1.21	
RATED VOLTAGE (V)	24	TOTAL FLUX (lm)	18.010	η UP, DN (C0-180)	0.3, 49.9	
NOMINAL FLUX (lm)	18.0102	CIE CLASS	DIRECT	η UP, DN (C180-360)	0.2, 49.6	
LAMPS INSIDE	1	η up (%)	0.5	CIBSE SHR NOM	1.25	
TEST VOLTAGE (V)	24	η down (%)	99.5	CIBSE SHR MAX	1.35	

LUMINOUS INTENSITY DISTRIBUTION DIAGRAM



C0 PLANE ISOLUX DIAGRAM (UNIT:lx)



C Range: 0 - 360DEG
C Interval: 30.0DEG
Test Speed: HIGH
Temperature: 25.3DEG
Operators: LPC
Test Date: 2021-12-29

γ Range: 0 - 120DEG
γ Interval: 1.0DEG
Test System: EVERFINE GO-2000B_V1 SYSTEM V2.0.362
Humidity: 65.0%
Test Distance: 9.200m [K=1.0000]
Remarks:

ZONAL FLUX DIAGRAM

ZONAL FLUX DIAGRAM:

γ	C0	C45	C90	C135	C180	C225	C270	C315	γ	Φ zone	Φ total	%lum, lamp
10	6.328	6.317	6.262	6.242	6.267	6.259	6.277	6.270	0- 10	0.6042	0.6042	3.35,3.35
20	5.971	5.973	5.910	5.880	5.920	5.873	5.840	5.903	10- 20	1.726	2.331	12.9,12.9
30	5.418	5.398	5.256	5.312	5.372	5.292	5.182	5.332	20- 30	2.598	4.929	27.4,27.4
40	4.690	4.661	4.437	4.573	4.648	4.556	4.343	4.626	30- 40	3.109	8.038	44.6,44.6
50	3.826	3.805	3.492	3.699	3.778	3.696	3.398	3.797	40- 50	3.206	11.24	62.4,62.4
60	2.851	2.842	2.436	2.714	2.798	2.704	2.343	2.857	50- 60	2.882	14.13	78.4,78.4
70	1.825	1.822	1.356	1.661	1.758	1.681	1.298	1.847	60- 70	2.183	16.31	90.6,90.6
80	0.8252	0.8217	0.3560	0.6760	0.7630	0.6885	0.3175	0.8518	70- 80	1.249	17.56	97.5,97.5
90	0.1813	0.1206	0	0.0804	0.1201	0.0755	0	0.1208	80- 90	0.3634	17.92	99.5,99.5
100	0.0302	0.0377	0	0.0553	0	0.0201	0	0.0101	90-100	0.0422	17.96	99.7,99.7
110	0.0202	0.0327	0.0352	0.0277	0	0.0276	0	0.0101	100-110	0.0232	17.99	99.9,99.9
120	0.0201	0.0327	0.0402	0.0452	0	0.0226	0	0.0101	110-120	0.0221	18.01	100,100
130	0	0	0	0	0	0	0	0	120-130	0.0011	18.01	100,100
140	0	0	0	0	0	0	0	0	130-140	0	18.01	100,100
150	0	0	0	0	0	0	0	0	140-150	0	18.01	100,100
160	0	0	0	0	0	0	0	0	150-160	0	18.01	100,100
170	0	0	0	0	0	0	0	0	160-170	0	18.01	100,100
180	0	0	0	0	0	0	0	0	170-180	0	18.01	100,100
DEG	LUMINOUS INTENSITY:cd									UNIT:lm		

Conical surface Flux(90deg): 9.6552 lm

%lum = 53.6%

%lamp = 53.6%

Conical surface Flux(120deg): 14.126 lm

%lum = 78.4%

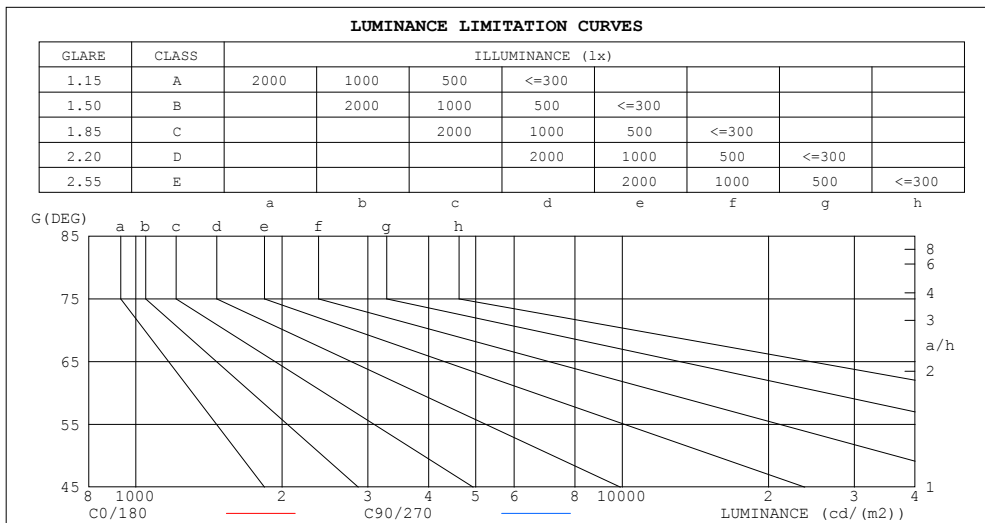
%lamp = 78.4%

C Range: 0 - 360DEG
 C Interval: 30.0DEG
 Test Speed: HIGH
 Temperature:25.3DEG
 Operators:LPC
 Test Date:2021-12-29

γ Range: 0 - 120DEG
 γ Interval: 1.0DEG
 Test System:EVERFINE GO-2000B_V1 SYSTEM V2.0.362
 Humidity:65.0%
 Test Distance:9.200m [K=1.0000]
 Remarks:

LUMINANCE LIMITATION CURVES

Test:U:24.00V I:0.2359A P:5.662W PF:1.000 Freq:50.00Hz Lamp Flux:18.0102x1 lm		
NAME: SF15-24V-5050-70-SPI3-RGB-B	TYPE: 硅胶	WEIGHT:
SPEC.:	DIM.: 21mm*11.5mm	SERIAL No.:2021122903
MFR.: OLYMPIA	SUR.:1*0.0115	Shielding Angle:



LUMINANCE cd/(m2)		
G (DEG)	C0/180	C90/270
85	422	30
80	413	178
75	443	278
70	464	345
65	482	388
60	496	424
55	508	449
50	518	472
45	525	488

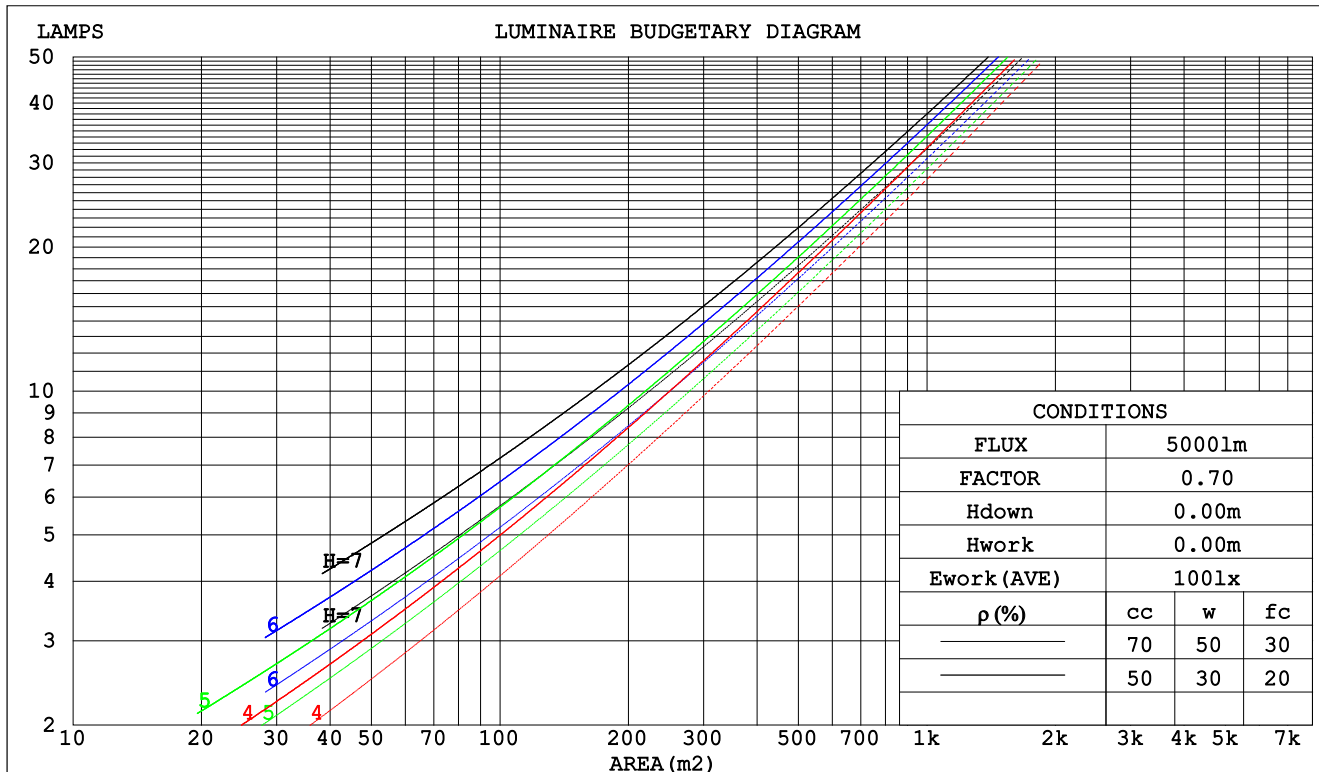
C Range: 0 - 360DEG
C Interval: 30.0DEG
Test Speed: HIGH
Temperature:25.3DEG
Operators:LPC
Test Date:2021-12-29

γ Range: 0 - 120DEG
 γ Interval: 1.0DEG
Test System:EVERFINE GO-2000B_V1 SYSTEM V2.0.362
Humidity:65.0%
Test Distance:9.200m [K=1.0000]
Remarks:

CU AND LUMINAIRE BUDGETARY ESTIMATE DIAGRAM

Test:U:24.00V I:0.2359A P:5.662W PF:1.000 Freq:50.00Hz Lamp Flux:18.0102x1 lm		
NAME: SF15-24V-5050-70-SPI3-RGB-B	TYPE: 硅胶	WEIGHT:
SPEC.:	DIM.: 21mm*11.5mm	SERIAL No.:2021122903
MFR.: OLYMPIA	SUR.:1*0.0115	Shielding Angle:

pcc	80%			70%			50%			30%			10%			0
pw	50%	30%	10%	50%	30%	10%	50%	30%	10%	50%	30%	10%	50%	30%	10%	0
pfc	20%			20%			20%			20%			20%			0
RCR	RCR:Room Cavity Ratio						Coefficients of Utilization(CU)									
0.0	1.19	1.19	1.19	1.16	1.16	1.16	1.11	1.11	1.11	1.06	1.06	1.06	1.02	1.02	1.02	.00
1.0	1.04	.99	.96	1.01	.97	.94	.97	.94	.91	.93	.90	.88	.89	.87	.85	.83
2.0	.90	.83	.78	.88	.82	.77	.85	.79	.75	.81	.77	.73	.78	.75	.71	.69
3.0	.79	.71	.65	.78	.70	.64	.75	.68	.63	.72	.66	.62	.69	.64	.60	.58
4.0	.70	.61	.55	.69	.61	.54	.66	.59	.53	.64	.58	.53	.62	.56	.52	.50
5.0	.63	.54	.47	.62	.53	.47	.59	.52	.46	.57	.51	.46	.55	.50	.45	.43
6.0	.56	.48	.41	.56	.47	.41	.54	.46	.40	.52	.45	.40	.50	.44	.40	.38
7.0	.51	.42	.36	.50	.42	.36	.49	.41	.36	.47	.41	.36	.46	.40	.35	.33
8.0	.47	.38	.32	.46	.38	.32	.45	.37	.32	.43	.37	.32	.42	.36	.32	.30
9.0	.43	.35	.29	.42	.34	.29	.41	.34	.29	.40	.33	.29	.39	.33	.28	.27
10.0	.40	.32	.26	.39	.31	.26	.38	.31	.26	.37	.31	.26	.36	.30	.26	.24



C Range: 0 - 360DEG
 C Interval: 30.0DEG
 Test Speed: HIGH
 Temperature:25.3DEG
 Operators:LPC
 Test Date:2021-12-29

γ Range: 0 - 120DEG
 γ Interval: 1.0DEG
 Test System:EVERFINE GO-2000B_V1 SYSTEM V2.0.362
 Humidity:65.0%
 Test Distance:9.200m [K=1.0000]
 Remarks:

WEC AND CCEC

Test:U:24.00V I:0.2359A P:5.662W PF:1.000 Freq:50.00Hz Lamp Flux:18.0102x1 lm		
NAME: SF15-24V-5050-70-SPI3-RGB-B	TYPE: 硅胶	WEIGHT:
SPEC.:	DIM.: 21mm*11.5mm	SERIAL No.:2021122903
MFR.: OLYMPIA	SUR.:1*0.0115	Shielding Angle:

pcc	80%			70%			50%			30%			10%			0	
pw	50%	30%	10%	50%	30%	10%	50%	30%	10%	50%	30%	10%	50%	30%	10%	0	
pfc	20%			20%			20%			20%			20%			0	
RCR	RCR:Room Cavity Ratio						Wall Exitance Coefficients(WEC)										
0.0																	
1.0	.310	.176	.056	.303	.173	.055	.289	.166	.053	.277	.160	.051	.265	.154	.050		
2.0	.291	.160	.049	.285	.157	.048	.273	.152	.047	.262	.147	.046	.252	.142	.045		
3.0	.269	.143	.043	.264	.141	.043	.253	.137	.042	.243	.133	.041	.234	.130	.040		
4.0	.249	.129	.038	.244	.128	.038	.234	.124	.037	.226	.121	.037	.217	.118	.036		
5.0	.230	.117	.034	.225	.116	.034	.217	.113	.033	.209	.110	.033	.202	.108	.032		
6.0	.213	.107	.031	.209	.106	.030	.202	.103	.030	.195	.101	.030	.188	.099	.029		
7.0	.198	.098	.028	.195	.097	.028	.188	.095	.027	.182	.093	.027	.176	.092	.027		
8.0	.185	.091	.025	.182	.090	.025	.176	.088	.025	.171	.086	.025	.165	.085	.025		
9.0	.174	.084	.023	.171	.083	.023	.165	.082	.023	.160	.080	.023	.156	.079	.023		
10.0	.163	.078	.022	.161	.078	.022	.156	.076	.022	.151	.075	.021	.147	.074	.021		

pcc	80%			70%			50%			30%			10%			0
pw	50%	30%	10%	50%	30%	10%	50%	30%	10%	50%	30%	10%	50%	30%	10%	0
pfc	20%			20%			20%			20%			20%			0
RCR	RCR:Room Cavity Ratio						Ceiling Cavity Exitance Coefficients(CCEC)									
0.0	.194	.194	.194	.166	.166	.166	.113	.113	.113	.065	.065	.065	.021	.021	.021	
1.0	.184	.160	.138	.158	.137	.119	.108	.094	.082	.062	.055	.048	.020	.018	.015	
2.0	.176	.136	.102	.151	.117	.088	.103	.081	.061	.060	.047	.036	.019	.015	.012	
3.0	.168	.118	.078	.144	.102	.068	.099	.071	.048	.057	.041	.028	.018	.013	.009	
4.0	.161	.105	.062	.138	.091	.054	.095	.063	.038	.055	.037	.023	.018	.012	.007	
5.0	.153	.094	.051	.131	.082	.044	.091	.057	.031	.052	.034	.019	.017	.011	.006	
6.0	.146	.086	.043	.125	.075	.038	.087	.052	.027	.050	.031	.016	.016	.010	.005	
7.0	.139	.079	.037	.120	.069	.032	.083	.048	.023	.048	.028	.014	.016	.009	.005	
8.0	.133	.073	.033	.114	.064	.028	.079	.045	.020	.046	.026	.012	.015	.009	.004	
9.0	.127	.068	.029	.109	.059	.025	.076	.042	.018	.044	.025	.011	.014	.008	.004	
10.0	.121	.064	.026	.104	.056	.023	.072	.039	.016	.042	.023	.010	.014	.008	.003	

C Range: 0 - 360DEG
 C Interval: 30.0DEG
 Test Speed: HIGH
 Temperature:25.3DEG
 Operators:LPC
 Test Date:2021-12-29

γ Range: 0 - 120DEG
 γ Interval: 1.0DEG
 Test System:EVERFINE GO-2000B_V1 SYSTEM V2.0.362
 Humidity:65.0%
 Test Distance:9.200m [K=1.0000]
 Remarks:

UGR(Unified Glare Rating) Table

Test:U:24.00V I:0.2359A P:5.662W PF:1.000 Freq:50.00Hz Lamp Flux:18.0102x1 lm										
NAME: SF15-24V-5050-70-SPI3-RGB-B					TYPE: 硅胶			WEIGHT:		
SPEC.:					DIM.: 21mm*11.5mm			SERIAL No.:2021122903		
MFR.: OLYMPIA					SUR.:1*0.0115			Shielding Angle:		
ceiling/cavity	0.7	0.7	0.5	0.5	0.3	0.7	0.7	0.5	0.5	0.3
walls	0.5	0.3	0.5	0.3	0.3	0.5	0.3	0.5	0.3	0.3
working plane	0.2	0.2	0.2	0.2	0.2	0.2	0.2	0.2	0.2	0.2
Room dimensions	Viewed crosswise					Viewed endwise				
x = 2H y = 2H	24.6	26.1	24.8	26.3	26.5	24.2	25.7	24.4	25.9	26.1
3H	26.2	27.6	26.5	27.8	28.0	25.5	26.9	25.8	27.1	27.4
4H	26.8	28.1	27.1	28.4	28.7	25.9	27.3	26.2	27.5	27.8
6H	27.3	28.6	27.7	28.9	29.1	26.1	27.4	26.5	27.6	27.9
8H	27.5	28.7	27.8	29.0	29.3	26.1	27.3	26.5	27.6	27.9
12H	27.6	28.8	28.0	29.1	29.4	26.1	27.2	26.4	27.5	27.9
4H 2H	25.2	26.5	25.5	26.8	27.1	24.9	26.2	25.2	26.5	26.8
3H	27.0	28.1	27.3	28.4	28.8	26.5	27.6	26.8	28.0	28.3
4H	27.8	28.8	28.1	29.2	29.5	27.1	28.2	27.5	28.5	28.8
6H	28.4	29.3	28.8	29.7	30.1	27.4	28.4	27.8	28.7	29.1
8H	28.6	29.5	29.0	29.9	30.3	27.5	28.4	27.9	28.7	29.1
12H	28.8	29.6	29.2	30.0	30.4	27.5	28.3	27.9	28.7	29.1
8H 4H	28.1	28.9	28.5	29.3	29.7	27.5	28.4	27.9	28.7	29.1
6H	28.8	29.6	29.3	30.0	30.4	28.0	28.8	28.5	29.2	29.6
8H	29.2	29.8	29.6	30.2	30.7	28.2	28.8	28.7	29.3	29.7
12H	29.4	30.0	29.9	30.5	30.9	28.2	28.8	28.7	29.3	29.7
12H 4H	28.1	28.9	28.5	29.3	29.7	27.5	28.3	27.9	28.7	29.1
6H	28.9	29.6	29.4	30.0	30.5	28.1	28.8	28.6	29.2	29.7
8H	29.3	29.8	29.8	30.3	30.8	28.4	28.9	28.8	29.4	29.9
Variations with the observer position at spacings:										
S = 1.0H	+ 0.1 / - 0.2					+ 0.2 / - 0.2				
1.5H	+ 0.2 / - 0.3					+ 0.3 / - 0.4				
2.0H	+ 0.1 / - 0.3					+ 0.2 / - 0.5				

CIE Pub.117, 18.01 lm Total Lamp Luminous Flux Correct (8log(F/F0) = -14.0)

C Range: 0 - 360DEG
C Interval: 30.0DEG
Test Speed: HIGH
Temperature:25.3DEG
Operators:LPC
Test Date:2021-12-29

γ Range: 0 - 120DEG
γ Interval: 1.0DEG
Test System:EVERFINE GO-2000B_V1 SYSTEM V2.0.362
Humidity:65.0%
Test Distance:9.200m [K=1.0000]
Remarks:

UTILIZATION FACTORS TABLE

Test:U:24.00V I:0.2359A P:5.662W PF:1.000 Freq:50.00Hz Lamp Flux:18.0102x1 lm		
NAME: SF15-24V-5050-70-SPI3-RGB-B	TYPE: 硅胶	WEIGHT:
SPEC.:	DIM.: 21mm*11.5mm	SERIAL No.:2021122903
MFR.: OLYMPIA	SUR.:1*0.0115	Shielding Angle:

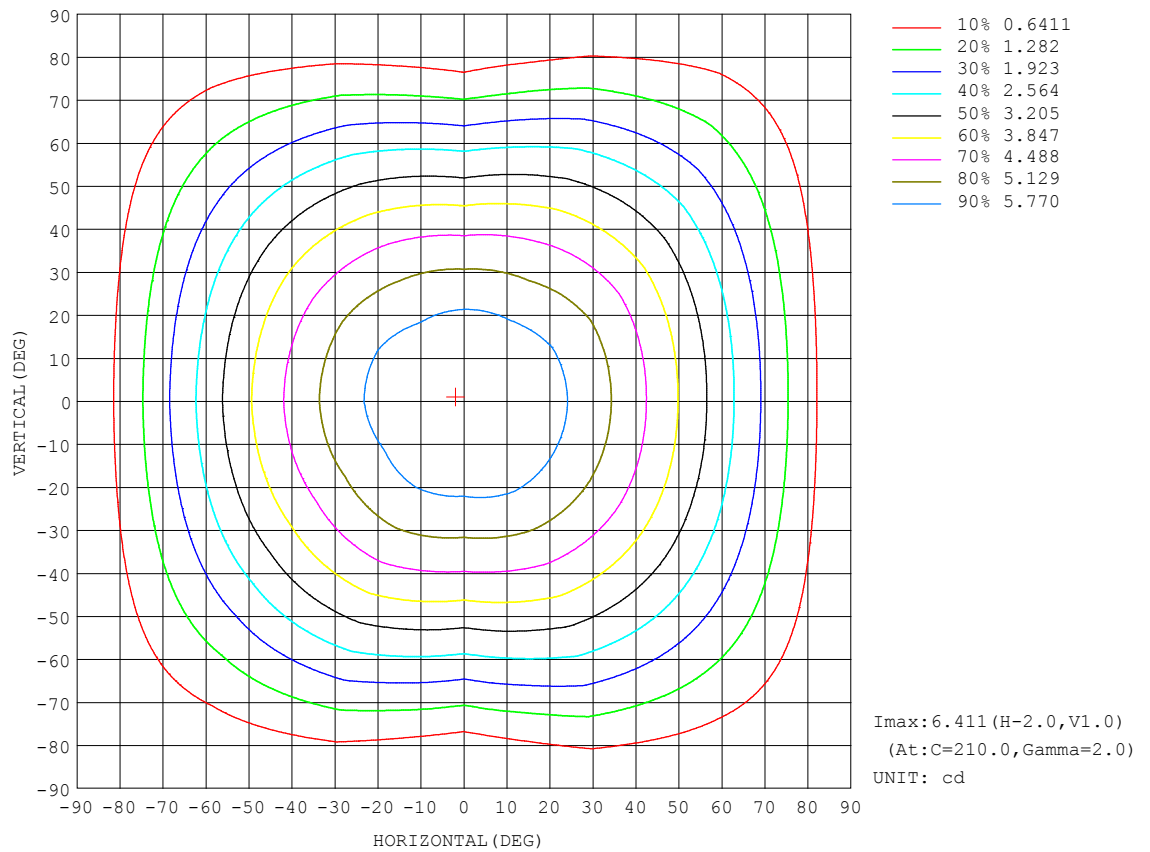
REFLECTANCE										
Ceiling	0.8	0.8	0.8	0.7	0.7	0.7	0.5	0.5	0.5	0
Walls	0.7	0.5	0.3	0.7	0.5	0.3	0.7	0.5	0.3	0
Working plane	0.2	0.2	0.2	0.2	0.2	0.2	0.2	0.2	0.2	0
ROOM INDEX	UTILIZATION FACTORS (PERCENT) $k(RI) \times RCR = 5$									
$k = 0.60$	57	46	39	57	46	39	56	45	39	32
0.80	68	56	49	66	55	48	65	55	48	41
1.00	76	65	57	75	64	57	72	66	57	49
1.25	83	72	65	81	72	65	79	70	64	57
1.50	88	78	71	86	77	71	83	75	69	62
2.00	95	86	80	93	85	79	89	83	77	70
2.50	99	91	85	97	89	84	93	87	82	74
3.00	102	95	90	100	94	89	96	91	86	78
4.00	106	100	96	104	99	94	99	95	92	83
5.00	108	104	100	106	102	98	101	98	95	86
ROOM INDEX	UF(total)									Direct
According to DIN EN 13032-2 2004			Suspended					SHRNOM = 1.25		

C Range: 0 - 360DEG
C Interval: 30.0DEG
Test Speed: HIGH
Temperature:25.3DEG
Operators:LPC
Test Date:2021-12-29

γ Range: 0 - 120DEG
 γ Interval: 1.0DEG
Test System:EVERFINE GO-2000B_V1 SYSTEM V2.0.362
Humidity:65.0%
Test Distance:9.200m [K=1.0000]
Remarks:

ISOCANDELA DIAGRAM

Test:U:24.00V I:0.2359A P:5.662W PF:1.000 Freq:50.00Hz Lamp Flux:18.0102x1 lm		
NAME: SF15-24V-5050-70-SPI3-RGB-B	TYPE: 硅胶	WEIGHT:
SPEC.:	DIM.: 21mm*11.5mm	SERIAL No.:2021122903
MFR.: OLYMPIA	SUR.:1*0.0115	Shielding Angle:

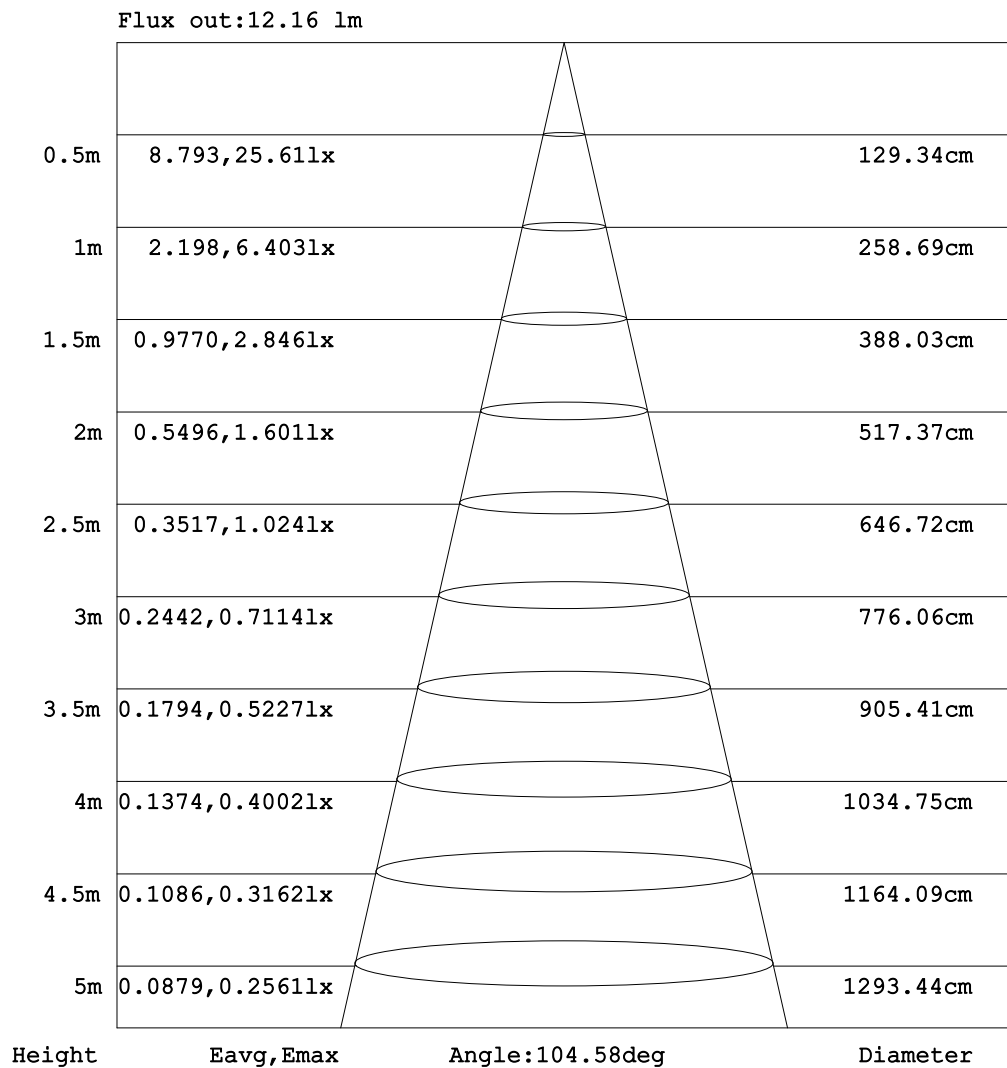


C Range: 0 - 360DEG
C Interval: 30.0DEG
Test Speed: HIGH
Temperature: 25.3DEG
Operators: LPC
Test Date: 2021-12-29

γ Range: 0 - 120DEG
 γ Interval: 1.0DEG
Test System: EVERFINE GO-2000B_V1 SYSTEM V2.0.362
Humidity: 65.0%
Test Distance: 9.200m [K=1.0000]
Remarks:

AAI Figure

Test:U:24.00V I:0.2359A P:5.662W PF:1.000 Freq:50.00Hz Lamp Flux:18.0102x1 lm		
NAME: SF15-24V-5050-70-SPI3-RGB-B	TYPE: 硅胶	WEIGHT:
SPEC.:	DIM.: 21mm*11.5mm	SERIAL No.:2021122903
MFR.: OLYMPIA	SUR.:1*0.0115	Shielding Angle:



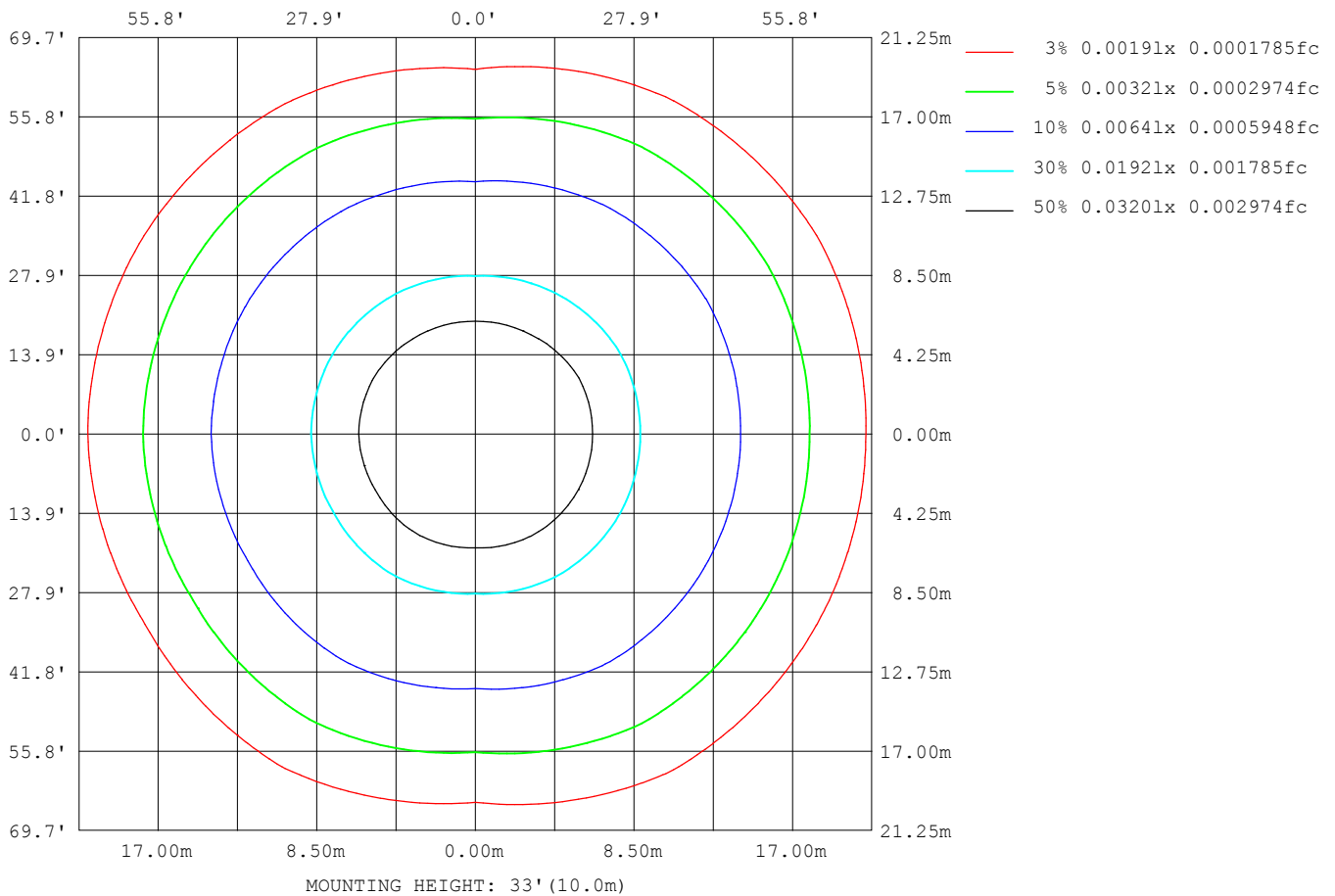
Note: The Curves indicate the illuminated area and the average illumination when the luminaire is at different distance.

C Range: 0 - 360DEG
 C Interval: 30.0DEG
 Test Speed: HIGH
 Temperature: 25.3DEG
 Operators: LPC
 Test Date: 2021-12-29

γ Range: 0 - 120DEG
 γ Interval: 1.0DEG
 Test System: EVERFINE GO-2000B_V1 SYSTEM V2.0.362
 Humidity: 65.0%
 Test Distance: 9.200m [K=1.0000]
 Remarks:

ISOLUX DIAGRAM

Test:U:24.00V I:0.2359A P:5.662W PF:1.000 Freq:50.00Hz Lamp Flux:18.0102x1 lm		
NAME: SF15-24V-5050-70-SPI3-RGB-B	TYPE: 硅胶	WEIGHT:
SPEC.:	DIM.: 21mm*11.5mm	SERIAL No.:2021122903
MFR.: OLYMPIA	SUR.:1*0.0115	Shielding Angle:



C Range: 0 - 360DEG
 C Interval: 30.0DEG
 Test Speed: HIGH
 Temperature:25.3DEG
 Operators:LPC
 Test Date:2021-12-29

γ Range: 0 - 120DEG
 γ Interval: 1.0DEG
 Test System:EVERFINE GO-2000B_V1 SYSTEM V2.0.362
 Humidity:65.0%
 Test Distance:9.200m [K=1.0000]
 Remarks:

LED Avg.L Report

Test:U:24.00V I:0.2359A P:5.662W PF:1.000 Freq:50.00Hz Lamp Flux:18.0102x1 lm		
NAME: SF15-24V-5050-70-SPI3-RGB-B	TYPE:硅胶	WEIGHT:
SPEC.:	DIM.: 21mm*11.5mm	SERIAL No.:2021122903
MFR.: OLYMPIA	SUR.:1*0.0115	Shielding Angle:

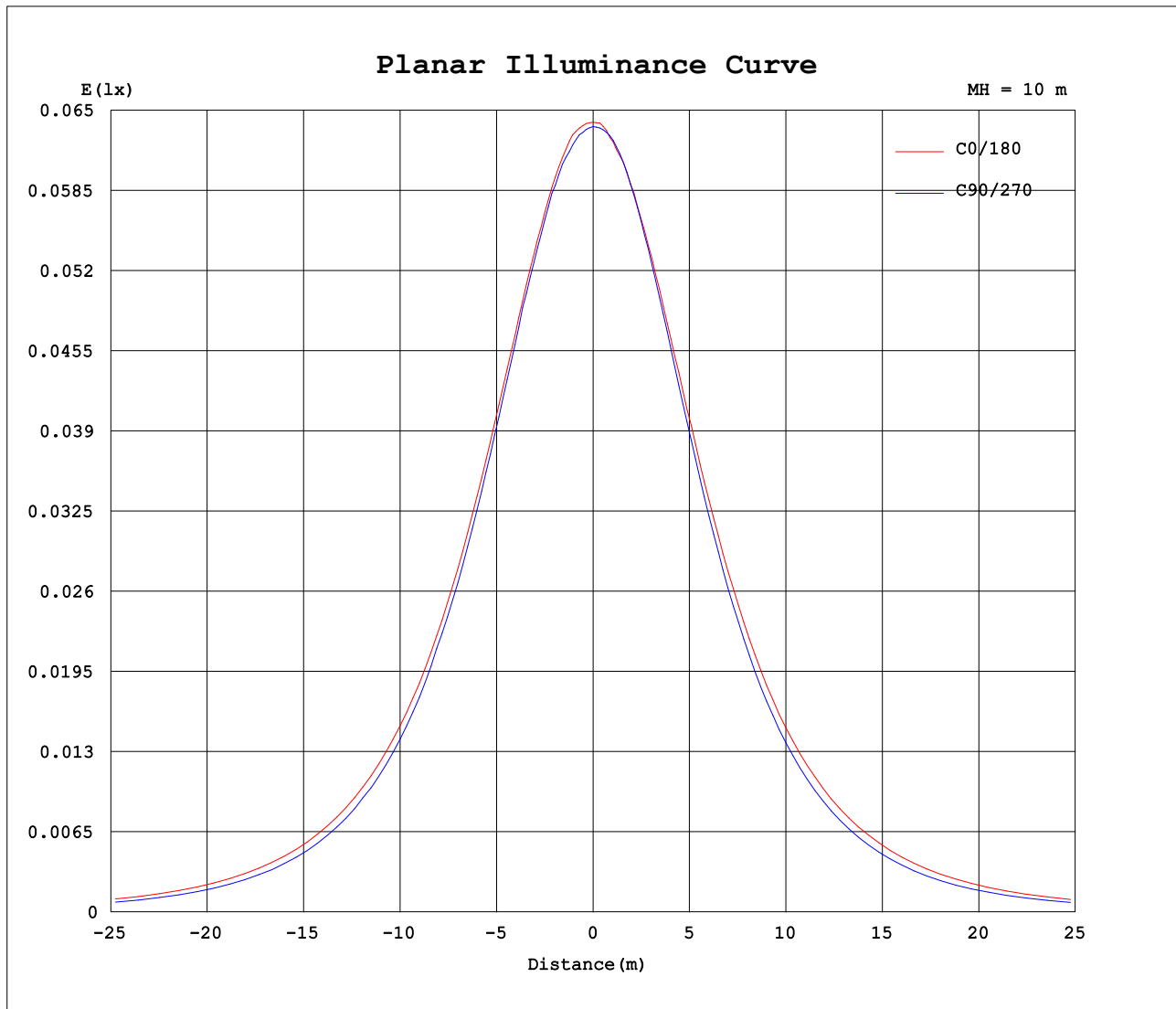
AvgL	cd/m2
L_0~180 (65) av	476
L_0~180 (75) av	431
L_0~180 (85) av	396
L_90~270 (65) av	380
L_90~270 (75) av	270
L_90~270 (85) av	17
L_45 (65) av	473
L_45 (75) av	429
L_45 (85) av	363

Standard: GB/T 29293-2012

C Range: 0 - 360DEG
C Interval: 30.0DEG
Test Speed: HIGH
Temperature:25.3DEG
Operators:LPC
Test Date:2021-12-29

γ Range: 0 - 120DEG
γ Interval: 1.0DEG
Test System:EVERFINE GO-2000B_V1 SYSTEM V2.0.362
Humidity:65.0%
Test Distance:9.200m [K=1.0000]
Remarks:

Planar Illuminance Curve



C Range: 0 - 360DEG
C Interval: 30.0DEG
Test Speed: HIGH
Temperature: 25.3DEG
Operators: LPC
Test Date: 2021-12-29

γ Range: 0 - 120DEG
 γ Interval: 1.0DEG
Test System: EVERFINE GO-2000B_V1 SYSTEM V2.0.362
Humidity: 65.0%
Test Distance: 9.200m [K=1.0000]
Remarks:

LUMINOUS DISTRIBUTION INTENSITY DATA

Test:U:24.00V I:0.2359A P:5.662W PF:1.000 Freq:50.00Hz Lamp Flux:18.0102x1 lm		
NAME: SF15-24V-5050-70-SPI3-RGB-B	TYPE: 硅胶	WEIGHT:
SPEC.:	DIM.: 21mm*11.5mm	SERIAL No.:2021122903
MFR.: OLYMPIA	SUR.:1*0.0115	Shielding Angle:

Table--1

UNIT: cd

C (DEG) γ (DEG)	0	30	60	90	120	150	180	210	240	270	300	330						
0	6.40	6.40	6.38	6.37	6.36	6.34	6.40	6.40	6.38	6.37	6.36	6.34						
5	6.40	6.37	6.38	6.34	6.36	6.32	6.35	6.39	6.32	6.37	6.32	6.34						
10	6.33	6.30	6.34	6.26	6.28	6.20	6.27	6.29	6.23	6.28	6.23	6.31						
15	6.17	6.15	6.19	6.11	6.13	6.06	6.13	6.14	6.05	6.09	6.08	6.17						
20	5.97	5.97	5.98	5.91	5.92	5.84	5.92	5.93	5.81	5.84	5.85	5.96						
25	5.72	5.70	5.70	5.60	5.65	5.59	5.67	5.65	5.54	5.53	5.57	5.71						
30	5.42	5.41	5.38	5.26	5.35	5.28	5.37	5.35	5.23	5.18	5.24	5.43						
35	5.08	5.07	5.02	4.86	5.00	4.93	5.03	5.00	4.87	4.78	4.88	5.09						
40	4.69	4.69	4.63	4.44	4.60	4.54	4.65	4.61	4.50	4.34	4.53	4.72						
45	4.27	4.26	4.22	3.97	4.18	4.12	4.23	4.20	4.08	3.89	4.14	4.31						
50	3.83	3.82	3.79	3.49	3.73	3.67	3.78	3.76	3.64	3.40	3.71	3.88						
55	3.35	3.35	3.32	2.96	3.25	3.19	3.31	3.26	3.16	2.89	3.26	3.42						
60	2.85	2.85	2.84	2.44	2.75	2.68	2.80	2.75	2.66	2.34	2.78	2.94						
65	2.34	2.37	2.33	1.88	2.23	2.15	2.28	2.25	2.15	1.81	2.28	2.43						
70	1.83	1.82	1.83	1.36	1.70	1.62	1.76	1.72	1.64	1.30	1.78	1.92						
75	1.32	1.32	1.33	0.83	1.19	1.12	1.25	1.22	1.12	0.78	1.28	1.42						
80	0.83	0.81	0.83	0.36	0.70	0.65	0.76	0.74	0.64	0.32	0.79	0.92						
85	0.42	0.38	0.38	0.03	0.30	0.29	0.37	0.37	0.24	0.01	0.35	0.47						
90	0.18	0.13	0.12	0.00	0.09	0.07	0.12	0.13	0.02	0.00	0.05	0.19						
95	0.07	0.03	0.05	0.00	0.06	0.05	0.00	0.05	0.01	0.00	0.00	0.07						
100	0.03	0.03	0.05	0.00	0.07	0.05	0.00	0.03	0.01	0.00	0.00	0.02						
105	0.03	0.03	0.04	0.00	0.04	0.06	0.00	0.03	0.01	0.00	0.00	0.02						
110	0.02	0.03	0.04	0.04	0.00	0.06	0.00	0.03	0.03	0.00	0.00	0.02						
115	0.02	0.03	0.05	0.04	0.02	0.06	0.00	0.02	0.03	0.00	0.00	0.02						
120	0.02	0.03	0.04	0.04	0.05	0.05	0.00	0.02	0.03	0.00	0.00	0.02						
125	0.00	0.00	0.00	0.00	0.00	0.00	0.00	0.00	0.00	0.00	0.00	0.00						
130	0.00	0.00	0.00	0.00	0.00	0.00	0.00	0.00	0.00	0.00	0.00	0.00						
135	0.00	0.00	0.00	0.00	0.00	0.00	0.00	0.00	0.00	0.00	0.00	0.00						
140	0.00	0.00	0.00	0.00	0.00	0.00	0.00	0.00	0.00	0.00	0.00	0.00						
145	0.00	0.00	0.00	0.00	0.00	0.00	0.00	0.00	0.00	0.00	0.00	0.00						
150	0.00	0.00	0.00	0.00	0.00	0.00	0.00	0.00	0.00	0.00	0.00	0.00						
155	0.00	0.00	0.00	0.00	0.00	0.00	0.00	0.00	0.00	0.00	0.00	0.00						
160	0.00	0.00	0.00	0.00	0.00	0.00	0.00	0.00	0.00	0.00	0.00	0.00						
165	0.00	0.00	0.00	0.00	0.00	0.00	0.00	0.00	0.00	0.00	0.00	0.00						
170	0.00	0.00	0.00	0.00	0.00	0.00	0.00	0.00	0.00	0.00	0.00	0.00						
175	0.00	0.00	0.00	0.00	0.00	0.00	0.00	0.00	0.00	0.00	0.00	0.00						
180	0.00	0.00	0.00	0.00	0.00	0.00	0.00	0.00	0.00	0.00	0.00	0.00						

C Range: 0 - 360DEG
C Interval: 30.0DEG
Test Speed: HIGH
Temperature:25.3DEG
Operators:LPC
Test Date:2021-12-29

γ Range: 0 - 120DEG
γ Interval: 1.0DEG
Test System:EVERFINE GO-2000B_V1 SYSTEM V2.0.362
Humidity:65.0%
Test Distance:9.200m [K=1.0000]
Remarks:

Photometric Data Table [cd]

G/C	0.0	30.0	60.0	90.0	120.0	150.0	180.0	210.0	240.0	270.0
0.0	6.403	6.398	6.378	6.368	6.357	6.337	6.403	6.398	6.378	6.368
3.0	6.403	6.393	6.388	6.348	6.358	6.322	6.398	6.408	6.347	6.368
6.0	6.408	6.362	6.376	6.322	6.363	6.297	6.347	6.383	6.307	6.358
9.0	6.348	6.312	6.353	6.292	6.308	6.232	6.307	6.318	6.252	6.303
12.0	6.277	6.232	6.297	6.226	6.232	6.146	6.226	6.237	6.156	6.207
15.0	6.172	6.151	6.192	6.106	6.127	6.056	6.126	6.142	6.045	6.087
18.0	6.066	6.036	6.077	5.985	6.006	5.935	6.005	6.016	5.910	5.951
21.0	5.931	5.920	5.931	5.829	5.871	5.804	5.870	5.881	5.759	5.790
24.0	5.775	5.764	5.765	5.663	5.710	5.648	5.739	5.725	5.598	5.599
27.0	5.604	5.598	5.584	5.467	5.534	5.472	5.573	5.544	5.417	5.403
30.0	5.418	5.412	5.383	5.256	5.348	5.277	5.372	5.353	5.231	5.182
33.0	5.217	5.216	5.172	5.025	5.137	5.090	5.176	5.157	5.020	4.956
36.0	5.001	4.985	4.951	4.784	4.916	4.854	4.960	4.926	4.804	4.690
39.0	4.770	4.774	4.715	4.557	4.685	4.623	4.723	4.700	4.568	4.439
42.0	4.524	4.528	4.469	4.246	4.439	4.397	4.482	4.454	4.326	4.167
45.0	4.273	4.261	4.222	3.969	4.182	4.120	4.226	4.197	4.075	3.886
48.0	4.011	4.005	3.966	3.678	3.916	3.854	3.969	3.931	3.814	3.594
51.0	3.730	3.728	3.700	3.376	3.635	3.572	3.688	3.655	3.542	3.293
54.0	3.449	3.447	3.423	3.075	3.343	3.276	3.402	3.373	3.251	2.996
57.0	3.152	3.160	3.127	2.758	3.047	2.989	3.100	3.067	2.964	2.675
60.0	2.851	2.849	2.835	2.436	2.750	2.678	2.798	2.745	2.662	2.343
63.0	2.544	2.547	2.539	2.095	2.439	2.361	2.487	2.449	2.361	2.021
66.0	2.238	2.236	2.232	1.783	2.122	2.045	2.180	2.127	2.045	1.700
69.0	1.926	1.934	1.926	1.461	1.805	1.728	1.873	1.830	1.733	1.408
72.0	1.614	1.612	1.624	1.160	1.499	1.431	1.557	1.514	1.426	1.087
75.0	1.318	1.316	1.333	0.8284	1.192	1.120	1.250	1.217	1.125	0.7801
78.0	1.036	1.009	1.026	0.5269	0.8906	0.8285	0.9489	0.9306	0.8284	0.5084
81.0	0.7346	0.7128	0.7396	0.2656	0.6090	0.5671	0.6777	0.6591	0.5469	0.2319
84.0	0.4933	0.4565	0.4684	0.0650	0.3677	0.3511	0.4415	0.4280	0.3058	0.0208
87.0	0.3072	0.2508	0.2470	0	0.1915	0.1955	0.2707	0.2518	0.1202	0
90.0	0.1813	0.1253	0.1158	0	0.0907	0.0702	0.1201	0.1260	0.0250	0
93.0	0.1007	0.0401	0.0554	0	0.0604	0.0502	0.0249	0.0555	0.0101	0
96.0	0.0504	0.0302	0.0452	0	0.0653	0.0452	0	0.0353	0.0101	0
99.0	0.0352	0.0302	0.0452	0	0.0603	0.0452	0	0.0352	0.0101	0
102.0	0.0302	0.0302	0.0402	0	0.0603	0.0503	0	0.0302	0.0101	0
105.0	0.0302	0.0302	0.0352	0	0.0403	0.0553	0	0.0302	0.0101	0
108.0	0.0302	0.0302	0.0352	0.0003	0.0402	0.0553	0	0.0302	0.0202	0
111.0	0.0201	0.0302	0.0352	0.0352	0	0.0553	0	0.0302	0.0251	0
114.0	0.0201	0.0302	0.0352	0.0402	0.0150	0.0553	0	0.0302	0.0251	0
117.0	0.0201	0.0302	0.0452	0.0402	0.0301	0.0452	0	0.0151	0.0251	0
120.0	0.0201	0.0251	0.0402	0.0402	0.0452	0.0452	0	0.0201	0.0251	0
G/C	300.0	330.0								
0.0	6.357	6.337								
3.0	6.342	6.342								
6.0	6.312	6.335								
9.0	6.257	6.328								
12.0	6.181	6.257								
15.0	6.081	6.167								
18.0	5.950	6.046								
21.0	5.804	5.906								
24.0	5.628	5.765								
27.0	5.437	5.599								
30.0	5.236	5.428								
33.0	5.030	5.237								
36.0	4.814	5.026								
39.0	4.613	4.795								
42.0	4.377	4.564								
45.0	4.140	4.313								
48.0	3.894	4.057								
51.0	3.628	3.795								
54.0	3.351	3.509								
57.0	3.075	3.222								
60.0	2.778	2.936								
63.0	2.482	2.635								
66.0	2.180	2.328								
69.0	1.879	2.021								
72.0	1.567	1.720								
75.0	1.281	1.418								
78.0	0.9890	1.112								
81.0	0.6925	0.8200								
84.0	0.4313	0.5538								
87.0	0.1954	0.3423								
90.0	0.0502	0.1914								

C Range: 0 - 360DEG
 C Interval: 30.0DEG
 Test Speed: HIGH
 Temperature: 25.3DEG
 Operators: LPC
 Test Date: 2021-12-29

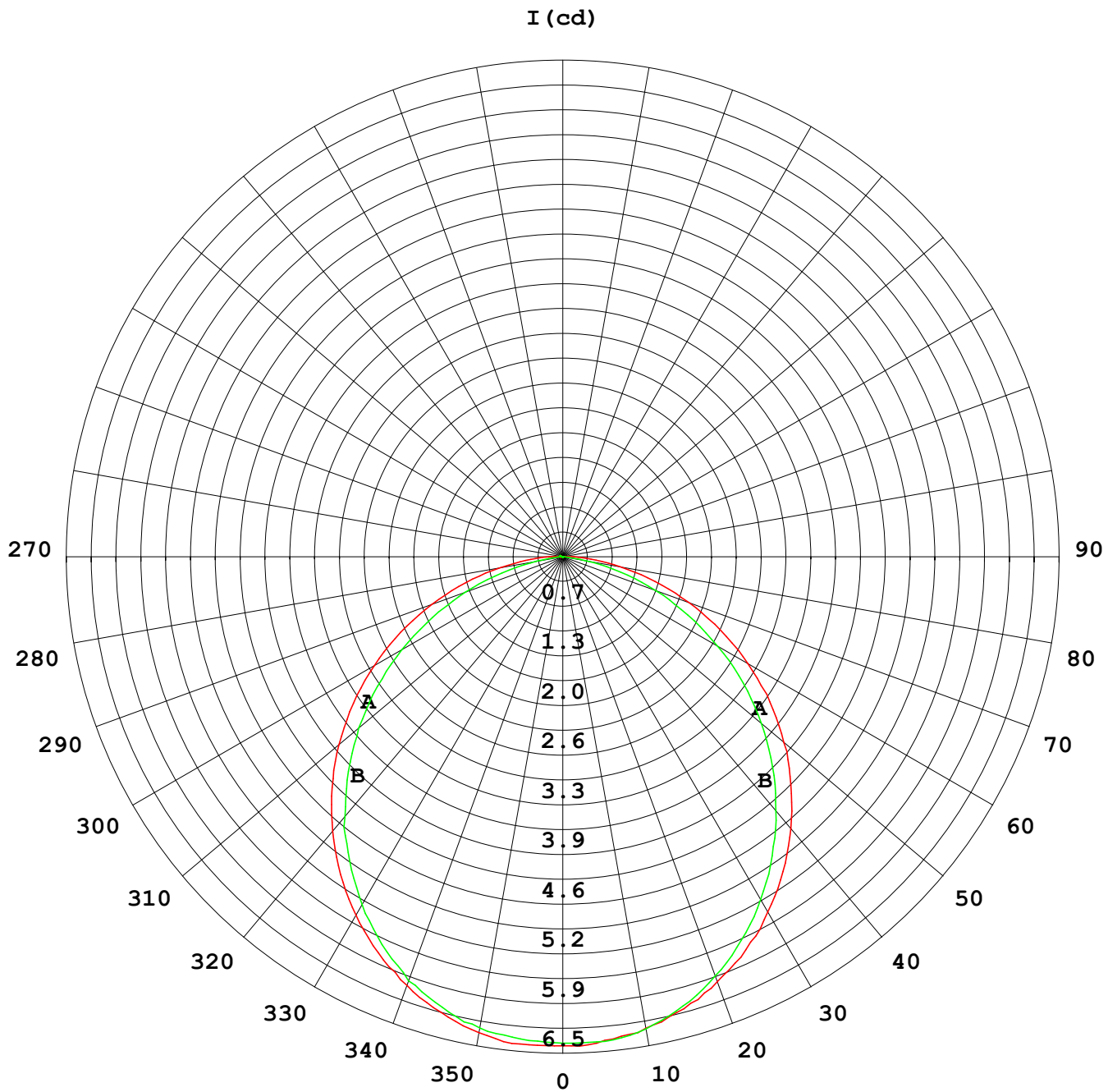
γ Range: 0 - 120DEG
 γ Interval: 1.0DEG
 Test System: EVERFINE GO-2000B_V1 SYSTEM V2.0.362
 Humidity: 65.0%
 Test Distance: 9.200m [K=1.0000]
 Remarks:

Photometric Data Table [cd]

93.0	0	0.1007
96.0	0	0.0504
99.0	0	0.0252
102.0	0	0.0201
105.0	0	0.0201
108.0	0	0.0201
111.0	0	0.0201
114.0	0	0.0201
117.0	0	0.0201
120.0	0	0.0201

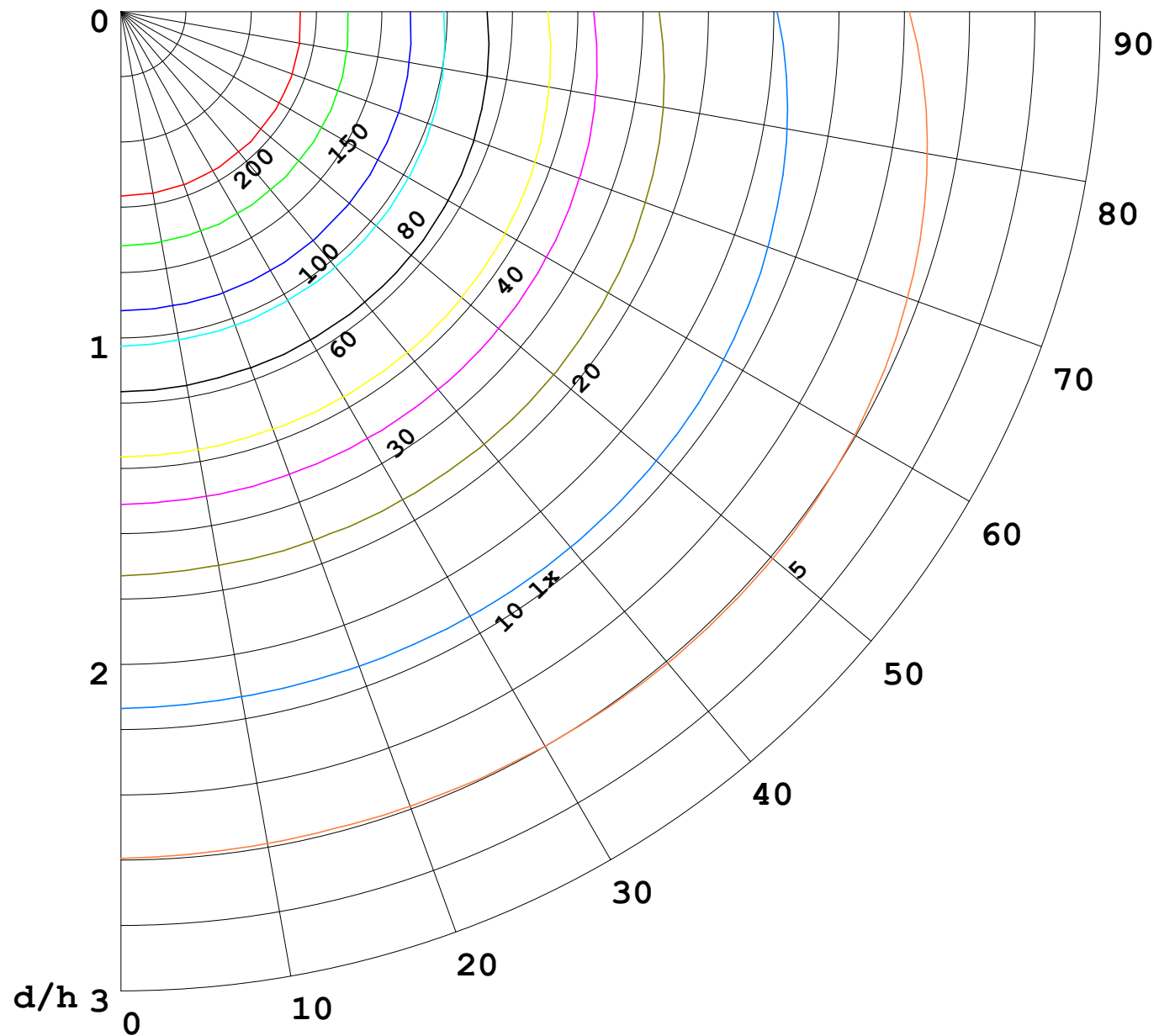
C Range: 0 - 360DEG
C Interval: 30.0DEG
Test Speed: HIGH
Temperature: 25.3DEG
Operators: LPC
Test Date: 2021-12-29

γ Range: 0 - 120DEG
γ Interval: 1.0DEG
Test System: EVERFINE GO-2000B_V1 SYSTEM V2.0.362
Humidity: 65.0%
Test Distance: 9.200m [K=1.0000]
Remarks:



1000 lm

$\kappa = 1$



F = 5000 lm
 K = 0.7
 Hcc = 0.0 m
 Hfc = 0.0 m
 Eave = 100 lx

	Pcc	Pw	Pfc
—	70	50	30
—	50	30	20

