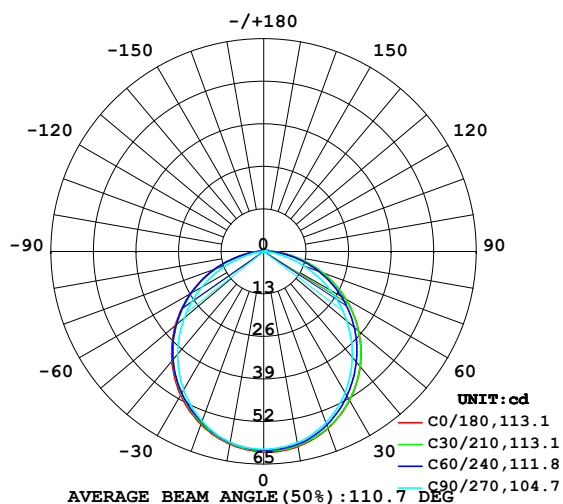


LUMINAIRE PHOTOMETRIC TEST REPORT

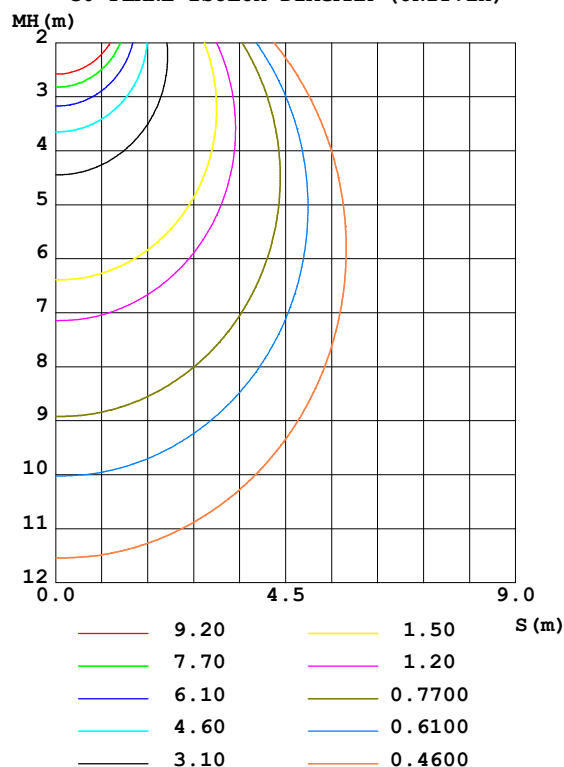
Test:U:24.00V I:0.5922A P:14.21W PF:1.000 Freq:50.00Hz Lamp Flux:174.414x1 lm		
NAME: SF15-24V-5050-56-SPI4-RGBW(2700)	TYPE: 硅胶	WEIGHT:
SPEC.:	DIM.: 21mm*11.5mm	SERIAL No.:2021122910
MFR.: OLYMPIA	SUR.:1*0.0115	Shielding Angle:

DATA OF LAMP		PHOTOMETRIC DATA Eff: 12.27 lm/W			
MODEL	5050	I _{max} (cd)	61.28	S/MH (C0/180)	1.24
NOMINAL POWER (W)	15	LOR (%)	100.0	S/MH (C90/270)	1.21
RATED VOLTAGE (V)	24	TOTAL FLUX (lm)	174.41	η UP, DN (C0-180)	0.8, 49.8
NOMINAL FLUX (lm)	174.414	CIE CLASS	DIRECT	η UP, DN (C180-360)	0.6, 48.8
LAMPS INSIDE	1	η up (%)	1.4	CIBSE SHR NOM	1.25
TEST VOLTAGE (V)	24	η down (%)	98.6	CIBSE SHR MAX	1.35

LUMINOUS INTENSITY DISTRIBUTION DIAGRAM



C0 PLANE ISOLUX DIAGRAM (UNIT:lx)



C Range: 0 - 360DEG
C Interval: 30.0DEG
Test Speed: HIGH
Temperature: 25.3DEG
Operators: LPC
Test Date: 2021-12-29

γ Range: 0 - 120DEG
γ Interval: 1.0DEG
Test System: EVERFINE GO-2000B_V1 SYSTEM V2.0.362
Humidity: 65.0%
Test Distance: 9.200m [K=1.0000]
Remarks:

ZONAL FLUX DIAGRAM

ZONAL FLUX DIAGRAM:

γ	C0	C45	C90	C135	C180	C225	C270	C315	γ	Φ zone	Φ total	%lum, lamp
10	60.50	60.02	59.35	58.68	59.79	59.40	59.25	59.42	0- 10	5.733	5.733	3.29,3.29
20	57.50	56.90	55.69	55.10	56.21	55.64	55.16	56.03	10- 20	16.37	22.10	12.7,12.7
30	52.55	51.65	49.82	49.68	50.74	50.15	48.94	50.81	20- 30	24.64	46.74	26.8,26.8
40	45.89	44.93	42.16	42.68	43.66	43.15	40.98	44.36	30- 40	29.54	76.29	43.7,43.7
50	37.86	37.02	33.21	34.43	35.24	34.90	31.74	36.71	40- 50	30.55	106.8	61.3,61.3
60	28.87	28.14	23.47	25.24	25.87	25.63	21.88	27.96	50- 60	27.57	134.4	77.1,77.1
70	19.24	18.66	13.30	15.52	16.00	15.75	11.71	18.62	60- 70	21.11	155.5	89.2,89.2
80	9.638	9.174	4.134	6.411	6.837	6.425	2.785	9.164	70- 80	12.32	167.8	96.2,96.2
90	2.728	2.138	0.5830	1.357	1.475	1.086	0.2909	2.003	80- 90	4.133	172.0	98.6,98.6
100	0.7744	0.9128	0.6687	0.9891	0.6249	0.7287	0.3616	0.6489	90-100	1.054	173.0	99.2,99.2
110	0.7828	0.8198	0.7540	0.7329	0.3409	0.7479	0.4673	0.6763	100-110	0.7579	173.8	99.6,99.6
120	0.8142	0.5161	0.8242	0.1276	0.0568	0.5202	0.1218	0.4889	110-120	0.6142	174.4	100,100
130	0	0	0	0	0	0	0	0	120-130	0.0237	174.4	100,100
140	0	0	0	0	0	0	0	0	130-140	0	174.4	100,100
150	0	0	0	0	0	0	0	0	140-150	0	174.4	100,100
160	0	0	0	0	0	0	0	0	150-160	0	174.4	100,100
170	0	0	0	0	0	0	0	0	160-170	0	174.4	100,100
180	0	0	0	0	0	0	0	0	170-180	0	174.4	100,100
DEG	LUMINOUS INTENSITY:cd									UNIT:lm		

Conical surface Flux(90deg): 91.687 lm

%lum = 52.6%

%lamp = 52.6%

Conical surface Flux(120deg): 134.4 lm

%lum = 77.1%

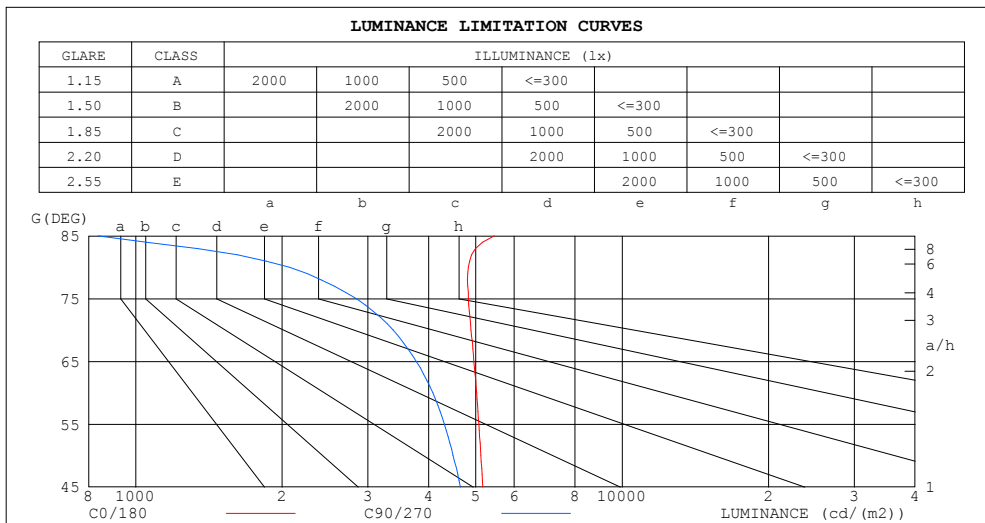
%lamp = 77.1%

C Range: 0 - 360DEG
 C Interval: 30.0DEG
 Test Speed: HIGH
 Temperature:25.3DEG
 Operators:LPC
 Test Date:2021-12-29

γ Range: 0 - 120DEG
 γ Interval: 1.0DEG
 Test System:EVERFINE GO-2000B_V1 SYSTEM V2.0.362
 Humidity:65.0%
 Test Distance:9.200m [K=1.0000]
 Remarks:

LUMINANCE LIMITATION CURVES

Test:U:24.00V I:0.5922A P:14.21W PF:1.000 Freq:50.00Hz Lamp Flux:174.414x1 lm		
NAME: SF15-24V-5050-56-SPI4-RGBW(2700)	TYPE: 硅胶	WEIGHT:
SPEC.:	DIM.: 21mm*11.5mm	SERIAL No.:2021122910
MFR.: OLYMPIA	SUR.:1*0.0115	Shielding Angle:



LUMINANCE cd/(m2)		
G (DEG)	C0/180	C90/270
85	5459	836
80	4827	2070
75	4831	2839
70	4891	3381
65	4957	3774
60	5020	4082
55	5074	4310
50	5122	4493
45	5170	4650

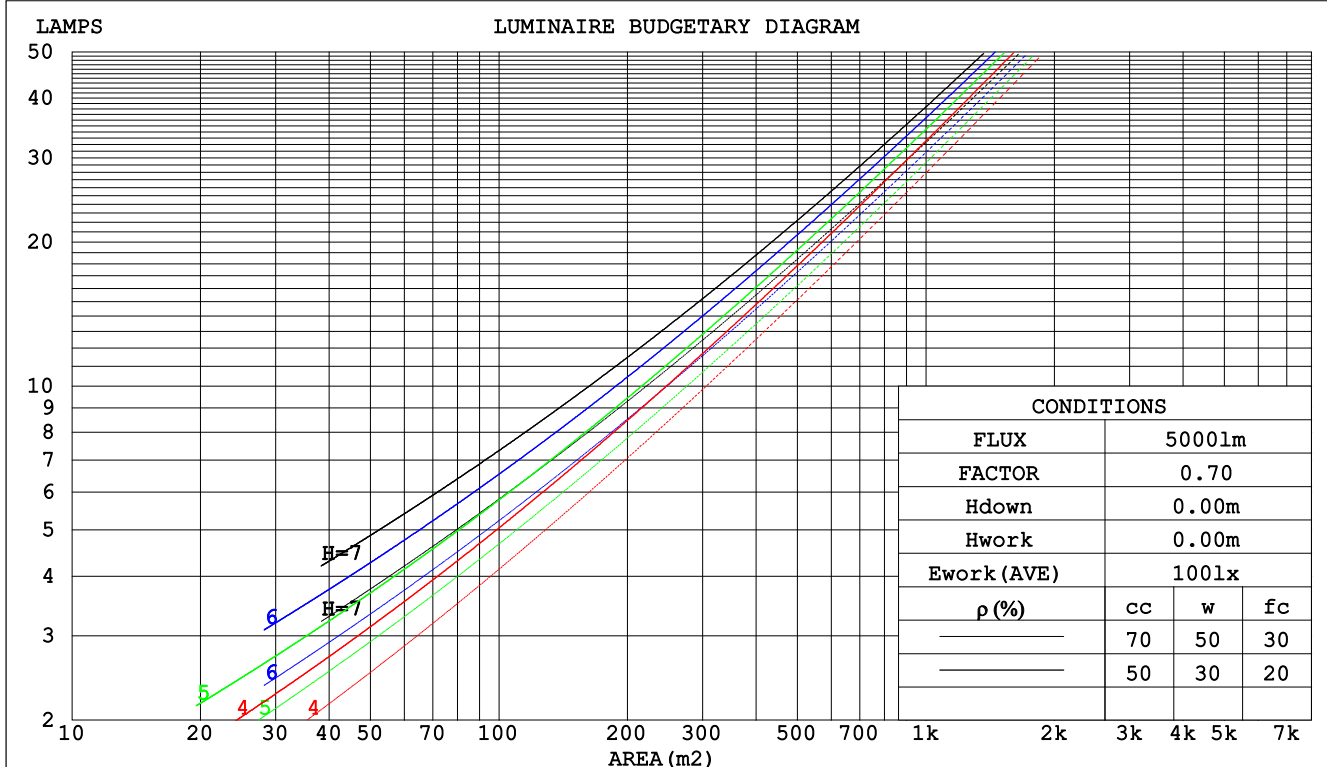
C Range: 0 - 360DEG
C Interval: 30.0DEG
Test Speed: HIGH
Temperature:25.3DEG
Operators:LPC
Test Date:2021-12-29

γ Range: 0 - 120DEG
 γ Interval: 1.0DEG
Test System:EVERFINE GO-2000B_V1 SYSTEM V2.0.362
Humidity:65.0%
Test Distance:9.200m [K=1.0000]
Remarks:

CU AND LUMINAIRE BUDGETARY ESTIMATE DIAGRAM

Test:U:24.00V I:0.5922A P:14.21W PF:1.000 Freq:50.00Hz Lamp Flux:174.414x1 lm		
NAME: SF15-24V-5050-56-SPI4-RGBW(2700)	TYPE: 硅胶	WEIGHT:
SPEC.:	DIM.: 21mm*11.5mm	SERIAL No.:2021122910
MFR.: OLYMPIA	SUR.:1*0.0115	Shielding Angle:

pcc	80%			70%			50%			30%			10%			0
pw	50%	30%	10%	50%	30%	10%	50%	30%	10%	50%	30%	10%	50%	30%	10%	0
pfc	20%			20%			20%			20%			20%			0
RCR	RCR:Room Cavity Ratio						Coefficients of Utilization(CU)									
0.0	1.19	1.19	1.19	1.16	1.16	1.16	1.10	1.10	1.10	1.05	1.05	1.05	1.01	1.01	1.01	.99
1.0	1.03	.99	.95	1.01	.97	.93	.96	.93	.90	.92	.90	.87	.88	.86	.84	.82
2.0	.90	.83	.77	.88	.81	.76	.84	.79	.74	.81	.76	.72	.77	.74	.70	.68
3.0	.79	.71	.64	.77	.69	.63	.74	.67	.62	.71	.65	.61	.68	.64	.60	.57
4.0	.70	.61	.54	.68	.60	.54	.66	.58	.53	.63	.57	.52	.61	.55	.51	.49
5.0	.62	.53	.47	.61	.53	.46	.59	.51	.46	.57	.50	.45	.55	.49	.44	.42
6.0	.56	.47	.41	.55	.47	.40	.53	.46	.40	.51	.45	.39	.50	.44	.39	.37
7.0	.51	.42	.36	.50	.42	.36	.48	.41	.35	.47	.40	.35	.45	.39	.35	.33
8.0	.46	.38	.32	.46	.37	.32	.44	.37	.32	.43	.36	.31	.42	.35	.31	.29
9.0	.43	.34	.29	.42	.34	.29	.41	.33	.28	.39	.33	.28	.38	.32	.28	.26
10.0	.39	.31	.26	.39	.31	.26	.38	.31	.26	.37	.30	.26	.36	.30	.25	.24



C Range: 0 - 360DEG
 C Interval: 30.0DEG
 Test Speed: HIGH
 Temperature:25.3DEG
 Operators:LPC
 Test Date:2021-12-29

γ Range: 0 - 120DEG
 γ Interval: 1.0DEG
 Test System:EVERFINE GO-2000B_V1 SYSTEM V2.0.362
 Humidity:65.0%
 Test Distance:9.200m [K=1.0000]
 Remarks:

WEC AND CCEC

Test:U:24.00V I:0.5922A P:14.21W PF:1.000 Freq:50.00Hz Lamp Flux:174.414x1 lm		
NAME: SF15-24V-5050-56-SPI4-RGBW(2700)	TYPE: 硅胶	WEIGHT:
SPEC.:	DIM.: 21mm*11.5mm	SERIAL No.:2021122910
MFR.: OLYMPIA	SUR.:1*0.0115	Shielding Angle:

pcc	80%			70%			50%			30%			10%			0	
pw	50%	30%	10%	50%	30%	10%	50%	30%	10%	50%	30%	10%	50%	30%	10%	0	
pfc	20%			20%			20%			20%			20%			0	
RCR	RCR:Room Cavity Ratio						Wall Exitance Coeffcients (WEC)										
0.0																	
1.0	.315	.179	.057	.307	.175	.056	.293	.168	.054	.280	.162	.052	.268	.156	.050		
2.0	.294	.161	.049	.287	.158	.049	.275	.153	.047	.263	.148	.046	.253	.143	.045		
3.0	.271	.144	.043	.265	.142	.043	.254	.138	.042	.244	.134	.041	.234	.130	.040		
4.0	.250	.130	.038	.245	.128	.038	.235	.124	.037	.226	.121	.037	.217	.118	.036		
5.0	.231	.118	.034	.226	.116	.034	.217	.113	.033	.209	.110	.033	.201	.108	.032		
6.0	.214	.107	.031	.210	.106	.030	.202	.103	.030	.194	.101	.030	.188	.099	.029		
7.0	.199	.098	.028	.195	.097	.028	.188	.095	.027	.182	.093	.027	.175	.091	.027		
8.0	.186	.091	.025	.182	.090	.025	.176	.088	.025	.170	.086	.025	.165	.084	.025		
9.0	.174	.084	.023	.171	.083	.023	.165	.082	.023	.160	.080	.023	.155	.079	.023		
10.0	.163	.078	.022	.161	.078	.022	.156	.076	.021	.151	.075	.021	.146	.074	.021		

pcc	80%			70%			50%			30%			10%			0
pw	50%	30%	10%	50%	30%	10%	50%	30%	10%	50%	30%	10%	50%	30%	10%	0
pfc	20%			20%			20%			20%			20%			0
RCR	RCR:Room Cavity Ratio						Ceiling Cavity Exitance Coefficients(CCEC)									
0.0	.201	.201	.201	.172	.172	.172	.117	.117	.117	.067	.067	.067	.022	.022	.022	
1.0	.191	.167	.145	.164	.143	.125	.112	.099	.086	.064	.057	.050	.021	.018	.016	
2.0	.183	.143	.109	.157	.123	.094	.108	.085	.065	.062	.049	.038	.020	.016	.013	
3.0	.176	.125	.085	.151	.108	.074	.103	.075	.052	.060	.044	.030	.019	.014	.010	
4.0	.168	.112	.069	.144	.097	.060	.099	.067	.042	.057	.039	.025	.018	.013	.008	
5.0	.161	.102	.058	.138	.088	.051	.095	.061	.036	.055	.036	.021	.018	.012	.007	
6.0	.153	.093	.050	.132	.081	.044	.091	.057	.031	.053	.033	.018	.017	.011	.006	
7.0	.146	.086	.044	.126	.075	.039	.087	.052	.027	.051	.031	.016	.016	.010	.005	
8.0	.140	.081	.040	.121	.070	.035	.083	.049	.025	.049	.029	.015	.016	.009	.005	
9.0	.134	.076	.036	.115	.066	.032	.080	.046	.022	.047	.027	.013	.015	.009	.004	
10.0	.128	.071	.034	.111	.062	.029	.077	.044	.021	.045	.026	.012	.015	.008	.004	

C Range: 0 - 360DEG
 C Interval: 30.0DEG
 Test Speed: HIGH
 Temperature:25.3DEG
 Operators:LPC
 Test Date:2021-12-29

γ Range: 0 - 120DEG
 γ Interval: 1.0DEG
 Test System:EVERFINE GO-2000B_V1 SYSTEM V2.0.362
 Humidity:65.0%
 Test Distance:9.200m [K=1.0000]
 Remarks:

UGR(Unified Glare Rating) Table

Test:U:24.00V I:0.5922A P:14.21W PF:1.000 Freq:50.00Hz Lamp Flux:174.414x1 lm										
NAME: SF15-24V-5050-56-SPI4-RGBW(2700)					TYPE:硅胶			WEIGHT:		
SPEC.:					DIM.: 21mm*11.5mm			SERIAL No.:2021122910		
MFR.: OLYMPIA					SUR.:1*0.0115			Shielding Angle:		
ceiling/cavity	0.7	0.7	0.5	0.5	0.3	0.7	0.7	0.5	0.5	0.3
walls	0.5	0.3	0.5	0.3	0.3	0.5	0.3	0.5	0.3	0.3
working plane	0.2	0.2	0.2	0.2	0.2	0.2	0.2	0.2	0.2	0.2
Room dimensions	Viewed crosswise					Viewed endwise				
x = 2H y = 2H	24.8	26.3	25.1	26.5	26.8	24.1	25.6	24.4	25.8	26.1
3H	26.5	27.9	26.8	28.1	28.4	25.5	26.9	25.8	27.1	27.4
4H	27.2	28.6	27.6	28.8	29.1	25.9	27.3	26.3	27.5	27.8
6H	27.9	29.1	28.2	29.4	29.7	26.2	27.4	26.5	27.7	28.0
8H	28.1	29.3	28.5	29.6	29.9	26.2	27.4	26.6	27.7	28.1
12H	28.3	29.5	28.7	29.8	30.1	26.2	27.4	26.6	27.7	28.0
4H 2H	25.4	26.7	25.7	27.0	27.3	24.9	26.2	25.2	26.5	26.8
3H	27.3	28.5	27.7	28.8	29.1	26.5	27.7	26.9	28.0	28.3
4H	28.2	29.3	28.6	29.6	30.0	27.1	28.2	27.5	28.6	28.9
6H	29.0	29.9	29.4	30.3	30.7	27.6	28.5	28.0	28.9	29.3
8H	29.3	30.2	29.7	30.6	31.0	27.6	28.5	28.1	28.9	29.3
12H	29.6	30.4	30.0	30.8	31.2	27.6	28.5	28.1	28.9	29.3
8H 4H	28.5	29.4	29.0	29.8	30.2	27.6	28.5	28.0	28.9	29.3
6H	29.5	30.2	30.0	30.6	31.1	28.2	29.0	28.7	29.4	29.9
8H	29.9	30.6	30.4	31.0	31.5	28.4	29.1	28.9	29.5	30.0
12H	30.3	30.9	30.8	31.4	31.9	28.5	29.1	29.0	29.6	30.1
12H 4H	28.5	29.3	29.0	29.8	30.2	27.7	28.5	28.1	28.9	29.3
6H	29.6	30.2	30.0	30.7	31.1	28.4	29.0	28.9	29.5	30.0
8H	30.1	30.6	30.6	31.1	31.6	28.7	29.2	29.2	29.7	30.2
Variations with the observer position at spacings:										
S = 1.0H	+ 0.1 / - 0.2					+ 0.2 / - 0.2				
1.5H	+ 0.2 / - 0.3					+ 0.2 / - 0.4				
2.0H	+ 0.1 / - 0.3					+ 0.2 / - 0.5				

CIE Pub.117, 174.4 lm Total Lamp Luminous Flux Correct (8log(F/F0) = -6.1)

C Range: 0 - 360DEG
C Interval: 30.0DEG
Test Speed: HIGH
Temperature:25.3DEG
Operators:LPC
Test Date:2021-12-29

γ Range: 0 - 120DEG
γ Interval: 1.0DEG
Test System:EVERFINE GO-2000B_V1 SYSTEM V2.0.362
Humidity:65.0%
Test Distance:9.200m [K=1.0000]
Remarks:

UTILIZATION FACTORS TABLE

Test:U:24.00V I:0.5922A P:14.21W PF:1.000 Freq:50.00Hz Lamp Flux:174.414x1 lm		
NAME: SF15-24V-5050-56-SPI4-RGBW(2700)	TYPE: 硅胶	WEIGHT:
SPEC.:	DIM.: 21mm*11.5mm	SERIAL No.:2021122910
MFR.: OLYMPIA	SUR.:1*0.0115	Shielding Angle:

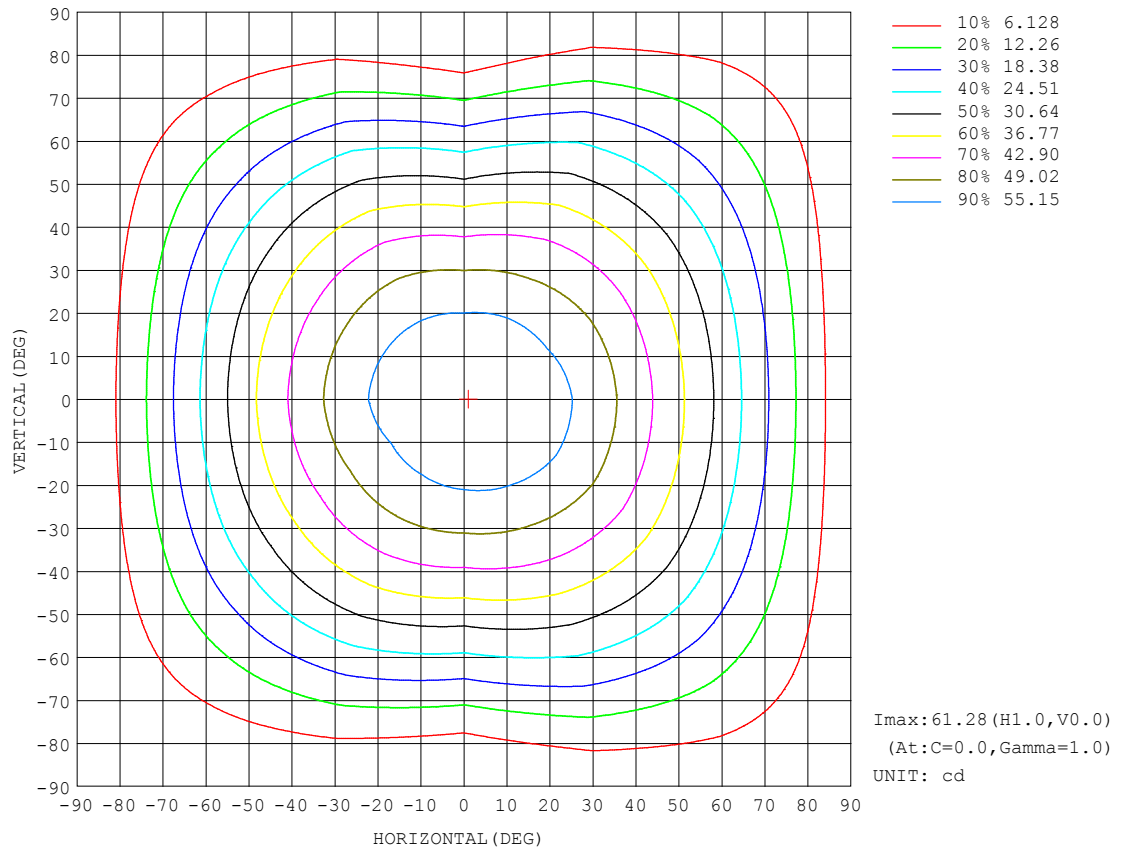
REFLECTANCE										
Ceiling	0.8	0.8	0.8	0.7	0.7	0.7	0.5	0.5	0.5	0
Walls	0.7	0.5	0.3	0.7	0.5	0.3	0.7	0.5	0.3	0
Working plane	0.2	0.2	0.2	0.2	0.2	0.2	0.2	0.2	0.2	0
ROOM INDEX	UTILIZATION FACTORS (PERCENT) $k(RI) \times RCR = 5$									
$k = 0.60$	57	45	38	56	45	38	55	45	38	32
0.80	67	55	48	66	55	48	64	54	47	40
1.00	75	64	57	74	63	56	72	65	56	49
1.25	82	72	64	81	71	64	78	69	63	56
1.50	87	77	70	86	76	70	82	74	68	61
2.00	94	85	79	92	84	78	89	82	76	68
2.50	98	90	84	96	89	83	92	86	81	72
3.00	101	94	89	99	93	88	95	90	85	77
4.00	106	100	95	103	98	93	99	94	91	81
5.00	108	103	99	105	101	97	101	97	94	84
ROOM INDEX	UF (total)									Direct
According to DIN EN 13032-2 2004			Suspended					SHRNOM = 1.25		

C Range: 0 - 360DEG
C Interval: 30.0DEG
Test Speed: HIGH
Temperature:25.3DEG
Operators:LPC
Test Date:2021-12-29

γ Range: 0 - 120DEG
 γ Interval: 1.0DEG
Test System:EVERFINE GO-2000B_V1 SYSTEM V2.0.362
Humidity:65.0%
Test Distance:9.200m [K=1.0000]
Remarks:

ISOCANDELA DIAGRAM

Test:U:24.00V I:0.5922A P:14.21W PF:1.000 Freq:50.00Hz Lamp Flux:174.414x1 lm		
NAME: SF15-24V-5050-56-SPI4-RGBW(2700)	TYPE: 硅胶	WEIGHT:
SPEC.:	DIM.: 21mm*11.5mm	SERIAL No.:2021122910
MFR.: OLYMPIA	SUR.:1*0.0115	Shielding Angle:

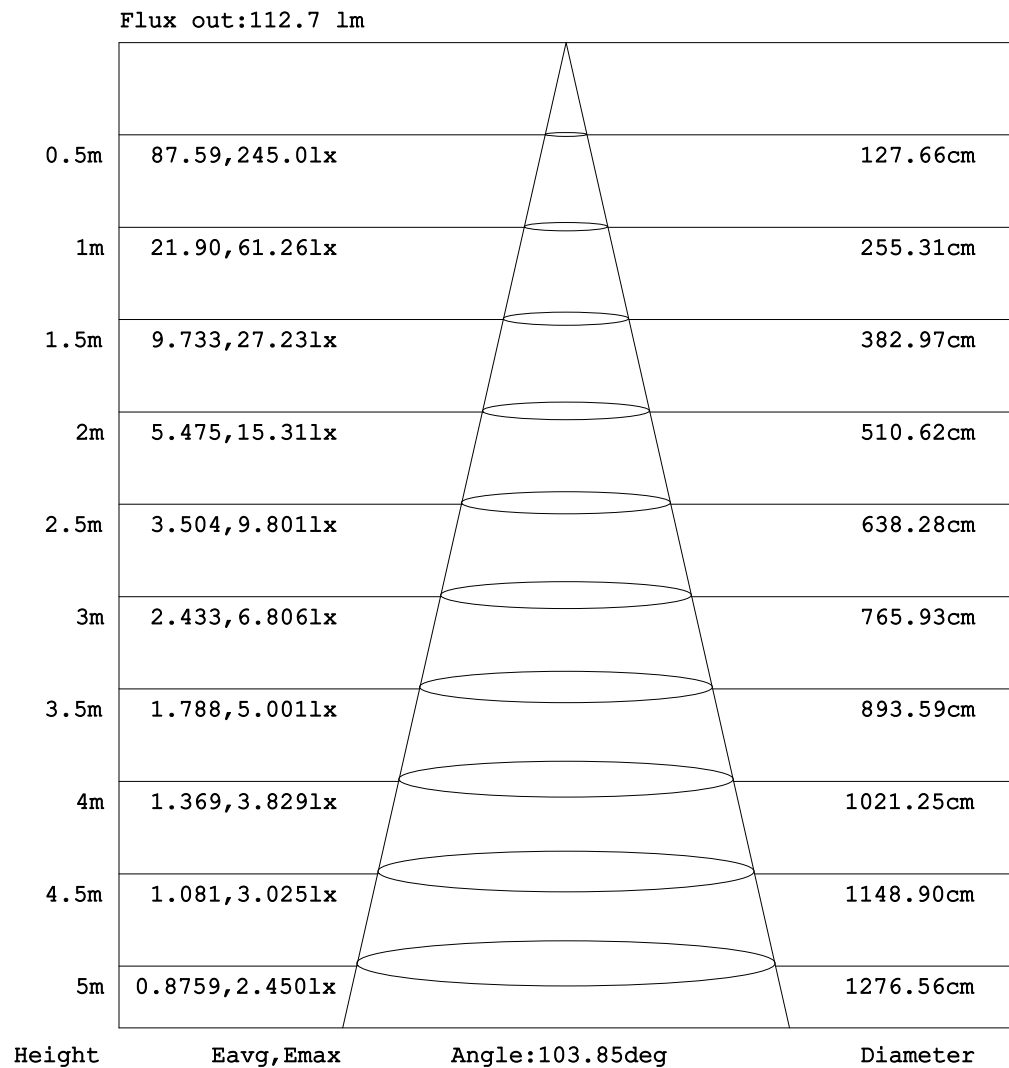


C Range: 0 - 360DEG
 C Interval: 30.0DEG
 Test Speed: HIGH
 Temperature: 25.3DEG
 Operators: LPC
 Test Date: 2021-12-29

γ Range: 0 - 120DEG
 γ Interval: 1.0DEG
 Test System: EVERFINE GO-2000B_V1 SYSTEM V2.0.362
 Humidity: 65.0%
 Test Distance: 9.200m [K=1.0000]
 Remarks:

AAI Figure

Test:U:24.00V I:0.5922A P:14.21W PF:1.000 Freq:50.00Hz Lamp Flux:174.414x1 lm		
NAME: SF15-24V-5050-56-SPI4-RGBW(2700)	TYPE: 硅胶	WEIGHT:
SPEC.:	DIM.: 21mm*11.5mm	SERIAL No.:2021122910
MFR.: OLYMPIA	SUR.:1*0.0115	Shielding Angle:



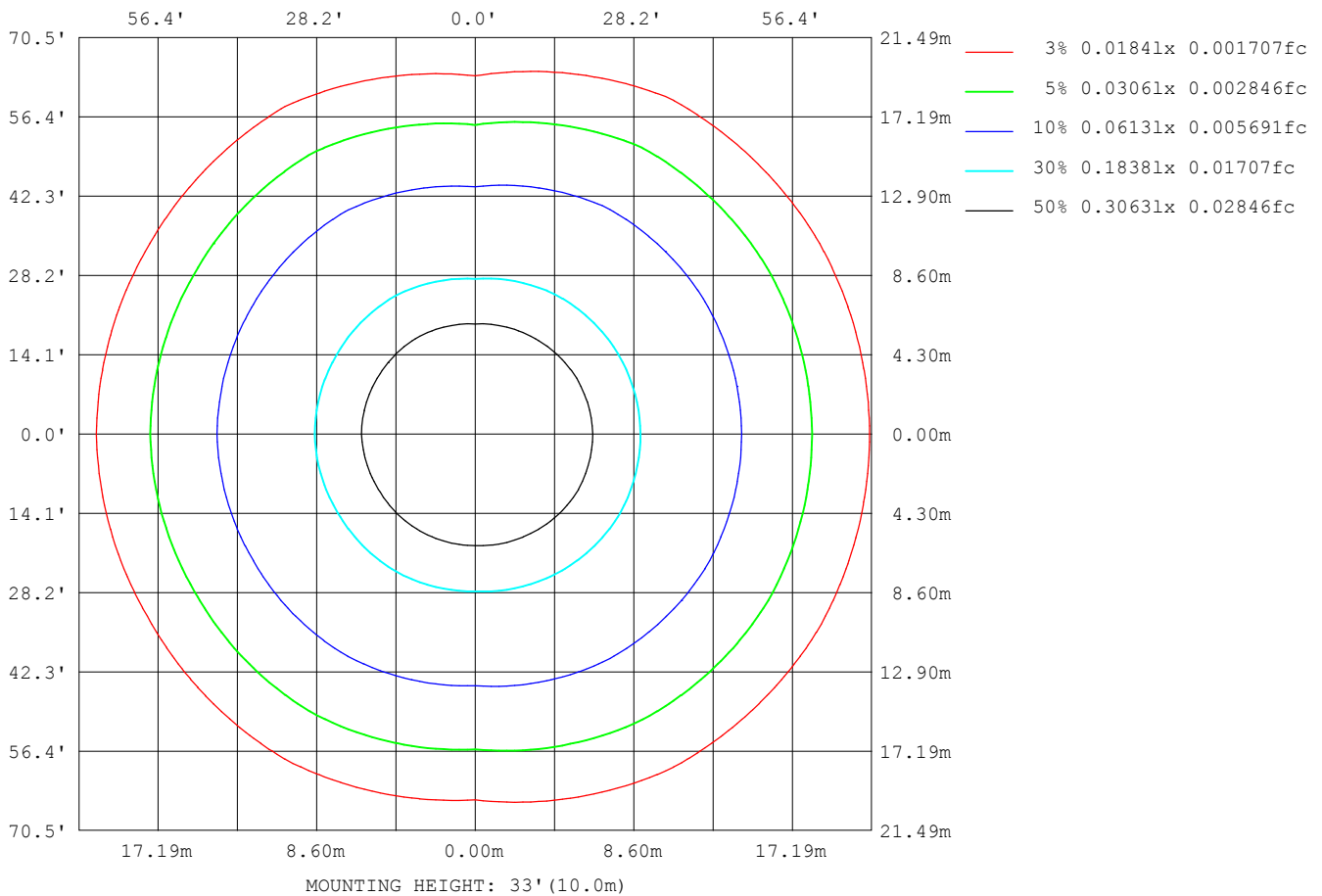
Note: The Curves indicate the illuminated area and the average illumination when the luminaire is at different distance.

C Range: 0 - 360DEG
 C Interval: 30.0DEG
 Test Speed: HIGH
 Temperature: 25.3DEG
 Operators: LPC
 Test Date: 2021-12-29

γ Range: 0 - 120DEG
 γ Interval: 1.0DEG
 Test System: EVERFINE GO-2000B_V1 SYSTEM V2.0.362
 Humidity: 65.0%
 Test Distance: 9.200m [K=1.0000]
 Remarks:

ISOLUX DIAGRAM

Test:U:24.00V I:0.5922A P:14.21W PF:1.000 Freq:50.00Hz Lamp Flux:174.414x1 lm		
NAME: SF15-24V-5050-56-SPI4-RGBW(2700)	TYPE: 硅胶	WEIGHT:
SPEC.:	DIM.: 21mm*11.5mm	SERIAL No.:2021122910
MFR.: OLYMPIA	SUR.:1*0.0115	Shielding Angle:



C Range: 0 - 360DEG
C Interval: 30.0DEG
Test Speed: HIGH
Temperature:25.3DEG
Operators:LPC
Test Date:2021-12-29

γ Range: 0 - 120DEG
 γ Interval: 1.0DEG
Test System:EVERFINE GO-2000B_V1 SYSTEM V2.0.362
Humidity:65.0%
Test Distance:9.200m [K=1.0000]
Remarks:

LED Avg.L Report

Test:U:24.00V I:0.5922A P:14.21W PF:1.000 Freq:50.00Hz Lamp Flux:174.414x1 lm		
NAME: SF15-24V-5050-56-SPI4-RGBW(2700)	TYPE:硅胶	WEIGHT:
SPEC.:	DIM.: 21mm*11.5mm	SERIAL No.:2021122910
MFR.: OLYMPIA	SUR.:1*0.0115	Shielding Angle:

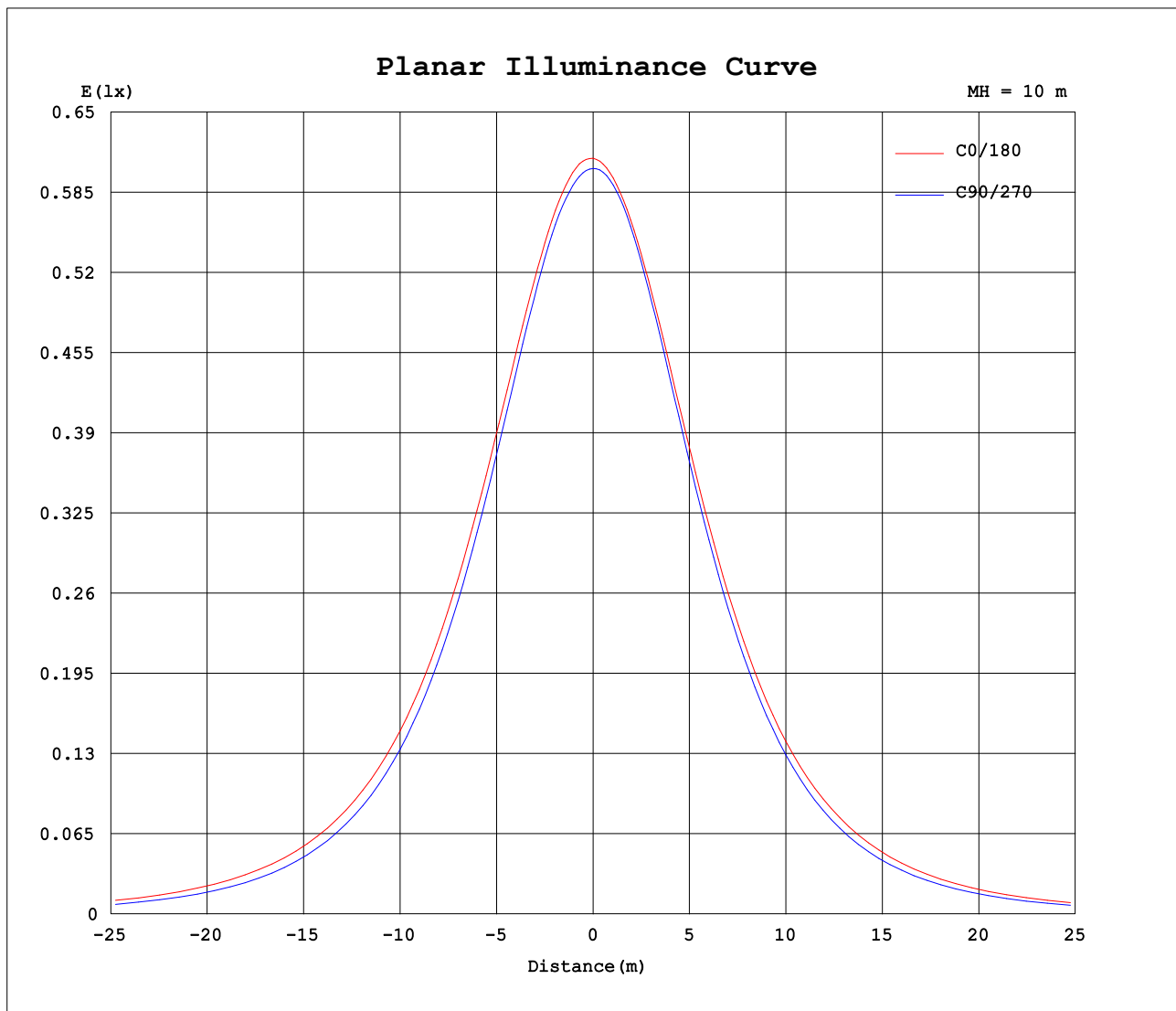
AvgL	cd/m2
L_0~180 (65) av	4634
L_0~180 (75) av	4290
L_0~180 (85) av	4489
L_90~270 (65) av	3612
L_90~270 (75) av	2562
L_90~270 (85) av	629
L_45 (65) av	4575
L_45 (75) av	4234
L_45 (85) av	4128

Standard: GB/T 29293-2012

C Range: 0 - 360DEG
C Interval: 30.0DEG
Test Speed: HIGH
Temperature:25.3DEG
Operators:LPC
Test Date:2021-12-29

γ Range: 0 - 120DEG
γ Interval: 1.0DEG
Test System:EVERFINE GO-2000B_V1 SYSTEM V2.0.362
Humidity:65.0%
Test Distance:9.200m [K=1.0000]
Remarks:

Planar Illuminance Curve



C Range: 0 - 360DEG
C Interval: 30.0DEG
Test Speed: HIGH
Temperature: 25.3DEG
Operators: LPC
Test Date: 2021-12-29

γ Range: 0 - 120DEG
 γ Interval: 1.0DEG
Test System: EVERFINE GO-2000B_V1 SYSTEM V2.0.362
Humidity: 65.0%
Test Distance: 9.200m [K=1.0000]
Remarks:

LUMINOUS DISTRIBUTION INTENSITY DATA

Test:U:24.00V I:0.5922A P:14.21W PF:1.000 Freq:50.00Hz Lamp Flux:174.414x1 lm		
NAME: SF15-24V-5050-56-SPI4-RGBW(2700)	TYPE: 硅胶	WEIGHT:
SPEC.:	DIM.: 21mm*11.5mm	SERIAL No.:2021122910
MFR.: OLYMPIA	SUR.:1*0.0115	Shielding Angle:

Table--1

UNIT: cd

C (DEG) γ (DEG)	0	30	60	90	120	150	180	210	240	270	300	330						
0	61.3	61.0	60.7	60.4	60.3	60.1	61.3	61.0	60.7	60.4	60.3	60.1						
5	61.2	60.9	60.5	60.1	59.8	59.6	60.8	60.5	60.3	60.2	60.1	60.1						
10	60.5	60.2	59.8	59.3	58.8	58.5	59.8	59.5	59.3	59.3	59.4	59.4						
15	59.3	59.0	58.5	57.8	57.3	57.0	58.2	57.9	57.7	57.5	57.9	58.2						
20	57.5	57.4	56.4	55.7	55.2	55.0	56.2	55.8	55.5	55.2	55.8	56.3						
25	55.3	55.1	53.9	53.0	52.6	52.6	53.7	53.2	53.0	52.3	53.2	54.1						
30	52.6	52.4	50.9	49.8	49.7	49.6	50.7	50.3	50.0	48.9	50.1	51.5						
35	49.4	49.3	47.6	46.2	46.4	46.3	47.4	46.9	46.8	45.2	46.8	48.5						
40	45.9	45.8	44.0	42.2	42.8	42.6	43.7	43.2	43.2	41.0	43.6	45.1						
45	42.0	42.0	40.2	37.8	38.8	38.6	39.6	39.1	39.2	36.5	40.1	41.4						
50	37.9	37.9	36.2	33.2	34.6	34.3	35.2	34.8	34.9	31.7	36.1	37.3						
55	33.5	33.5	31.8	28.4	30.1	29.8	30.6	30.3	30.5	26.9	31.8	33.0						
60	28.9	28.9	27.3	23.5	25.4	25.1	25.9	25.5	25.8	21.9	27.4	28.5						
65	24.1	24.2	22.7	18.3	20.6	20.3	20.9	20.6	20.9	16.8	22.8	23.9						
70	19.2	19.3	18.0	13.3	15.7	15.4	16.0	15.5	16.0	11.7	18.1	19.2						
75	14.4	14.5	13.2	8.45	10.9	10.7	11.2	10.7	11.1	6.80	13.3	14.4						
80	9.64	9.76	8.59	4.13	6.41	6.42	6.84	6.33	6.52	2.79	8.65	9.68						
85	5.47	5.45	4.41	0.84	2.89	3.26	3.53	3.10	2.78	0.42	4.38	5.43						
90	2.73	2.58	1.70	0.58	1.23	1.49	1.48	1.28	0.89	0.29	1.50	2.50						
95	1.30	1.23	0.99	0.61	1.09	1.10	0.77	0.81	0.71	0.30	0.71	1.09						
100	0.77	0.89	0.93	0.67	1.03	0.95	0.62	0.76	0.69	0.36	0.66	0.63						
105	0.78	0.93	0.85	0.73	0.90	0.73	0.48	0.77	0.64	0.45	0.61	0.64						
110	0.78	0.70	0.93	0.75	0.95	0.52	0.34	0.77	0.73	0.47	0.69	0.66						
115	0.80	0.41	1.01	0.80	1.01	0.30	0.20	0.77	0.76	0.43	0.69	0.68						
120	0.81	0.12	0.91	0.82	0.17	0.09	0.06	0.78	0.26	0.12	0.27	0.71						
125	0.00	0.00	0.00	0.00	0.00	0.00	0.00	0.00	0.00	0.00	0.00	0.00						
130	0.00	0.00	0.00	0.00	0.00	0.00	0.00	0.00	0.00	0.00	0.00	0.00						
135	0.00	0.00	0.00	0.00	0.00	0.00	0.00	0.00	0.00	0.00	0.00	0.00						
140	0.00	0.00	0.00	0.00	0.00	0.00	0.00	0.00	0.00	0.00	0.00	0.00						
145	0.00	0.00	0.00	0.00	0.00	0.00	0.00	0.00	0.00	0.00	0.00	0.00						
150	0.00	0.00	0.00	0.00	0.00	0.00	0.00	0.00	0.00	0.00	0.00	0.00						
155	0.00	0.00	0.00	0.00	0.00	0.00	0.00	0.00	0.00	0.00	0.00	0.00						
160	0.00	0.00	0.00	0.00	0.00	0.00	0.00	0.00	0.00	0.00	0.00	0.00						
165	0.00	0.00	0.00	0.00	0.00	0.00	0.00	0.00	0.00	0.00	0.00	0.00						
170	0.00	0.00	0.00	0.00	0.00	0.00	0.00	0.00	0.00	0.00	0.00	0.00						
175	0.00	0.00	0.00	0.00	0.00	0.00	0.00	0.00	0.00	0.00	0.00	0.00						
180	0.00	0.00	0.00	0.00	0.00	0.00	0.00	0.00	0.00	0.00	0.00	0.00						

C Range: 0 - 360DEG
C Interval: 30.0DEG
Test Speed: HIGH
Temperature:25.3DEG
Operators:LPC
Test Date:2021-12-29

γ Range: 0 - 120DEG
γ Interval: 1.0DEG
Test System:EVERFINE GO-2000B_V1 SYSTEM V2.0.362
Humidity:65.0%
Test Distance:9.200m [K=1.0000]
Remarks:

Photometric Data Table [cd]

G/C	0.0	30.0	60.0	90.0	120.0	150.0	180.0	210.0	240.0	270.0
0.0	61.26	60.97	60.67	60.43	60.25	60.05	61.26	60.97	60.67	60.43
3.0	61.27	60.95	60.68	60.32	60.07	59.83	61.05	60.77	60.50	60.38
6.0	61.10	60.78	60.44	60.02	59.67	59.40	60.64	60.35	60.13	60.07
9.0	60.69	60.39	60.00	59.54	59.07	58.77	60.04	59.72	59.56	59.51
12.0	60.07	59.79	59.39	58.82	58.32	57.99	59.24	58.90	58.72	58.61
15.0	59.25	59.03	58.45	57.85	57.28	57.03	58.25	57.88	57.67	57.50
18.0	58.26	58.11	57.33	56.61	56.07	55.86	57.08	56.73	56.41	56.21
21.0	57.10	56.92	55.98	55.16	54.68	54.55	55.75	55.30	55.01	54.59
24.0	55.74	55.64	54.45	53.59	53.18	53.10	54.24	53.81	53.50	52.95
27.0	54.23	54.07	52.77	51.73	51.50	51.40	52.57	52.09	51.83	50.93
30.0	52.55	52.38	50.91	49.82	49.72	49.63	50.74	50.26	50.05	48.94
33.0	50.71	50.59	48.96	47.67	47.79	47.65	48.78	48.34	48.14	46.70
36.0	48.74	48.62	46.92	45.37	45.71	45.55	46.67	46.18	46.07	44.34
39.0	46.62	46.51	44.77	42.98	43.52	43.35	44.43	43.93	43.89	41.84
42.0	44.38	44.31	42.55	40.46	41.21	41.03	42.07	41.64	41.60	39.20
45.0	42.04	42.03	40.24	37.82	38.79	38.58	39.59	39.13	39.18	36.51
48.0	39.58	39.57	37.84	35.11	36.27	36.08	37.03	36.54	36.68	33.67
51.0	37.02	37.06	35.33	32.29	33.67	33.43	34.36	33.90	34.07	30.76
54.0	34.38	34.38	32.73	29.40	30.99	30.72	31.58	31.16	31.38	27.87
57.0	31.66	31.73	30.07	26.48	28.21	27.93	28.77	28.28	28.63	24.90
60.0	28.87	28.94	27.35	23.47	25.39	25.08	25.87	25.48	25.77	21.88
63.0	26.02	26.09	24.62	20.39	22.52	22.17	22.93	22.54	22.87	18.84
66.0	23.14	23.25	21.80	17.33	19.61	19.28	19.95	19.54	19.94	15.75
69.0	20.22	20.32	18.93	14.30	16.66	16.34	17.00	16.58	16.99	12.72
72.0	17.30	17.39	16.08	11.33	13.75	13.44	14.04	13.64	14.01	9.725
75.0	14.38	14.48	13.22	8.451	10.88	10.65	11.16	10.69	11.09	6.799
78.0	11.50	11.61	10.40	5.762	8.111	7.989	8.475	8.059	8.278	4.184
81.0	8.743	8.812	7.708	3.335	5.596	5.668	6.094	5.605	5.660	2.092
84.0	6.201	6.239	5.171	1.267	3.455	3.789	4.100	3.666	3.395	0.5265
87.0	4.203	4.086	3.033	0.6528	1.965	2.364	2.539	2.215	1.766	0.3120
90.0	2.728	2.580	1.697	0.5830	1.228	1.486	1.475	1.279	0.8933	0.2909
93.0	1.726	1.621	1.122	0.5982	1.097	1.101	0.8834	0.8551	0.7110	0.2972
96.0	1.133	1.079	0.9786	0.6234	1.084	1.090	0.7386	0.8042	0.7035	0.2966
99.0	0.8199	0.8946	0.9429	0.6535	1.048	0.9891	0.6533	0.7640	0.6959	0.3315
102.0	0.7756	0.9098	0.9072	0.7058	1.001	0.8601	0.5681	0.7642	0.6381	0.4368
105.0	0.7773	0.9299	0.8544	0.7264	0.8997	0.7310	0.4829	0.7652	0.6385	0.4472
108.0	0.7803	0.8224	0.9244	0.7470	0.9398	0.6020	0.3977	0.7661	0.6837	0.4573
111.0	0.7840	0.6462	0.9895	0.7740	0.9946	0.4730	0.3125	0.7671	0.7360	0.4723
114.0	0.7941	0.4700	1.005	0.7941	1.010	0.3440	0.2272	0.7680	0.7570	0.4873
117.0	0.8041	0.2937	1.025	0.8142	0.6767	0.2150	0.1420	0.7746	0.6409	0.3045
120.0	0.8142	0.1175	0.9147	0.8242	0.1692	0.0860	0.0568	0.7840	0.2563	0.1218
G/C	300.0	330.0								
0.0	60.25	60.05								
3.0	60.22	60.10								
6.0	60.02	59.97								
9.0	59.61	59.60								
12.0	58.87	59.00								
15.0	57.89	58.20								
18.0	56.70	57.14								
21.0	55.32	55.81								
24.0	53.75	54.57								
27.0	51.97	53.07								
30.0	50.08	51.55								
33.0	48.12	49.76								
36.0	46.20	47.86								
39.0	44.26	45.80								
42.0	42.27	43.64								
45.0	40.07	41.38								
48.0	37.70	38.98								
51.0	35.25	36.49								
54.0	32.69	33.95								
57.0	30.09	31.30								
60.0	27.38	28.54								
63.0	24.64	25.82								
66.0	21.86	22.99								
69.0	19.01	20.12								
72.0	16.15	17.26								
75.0	13.29	14.36								
78.0	10.48	11.49								
81.0	7.745	8.783								
84.0	5.178	6.210								
87.0	2.960	4.032								
90.0	1.505	2.502								

C Range: 0 - 360DEG
 C Interval: 30.0DEG
 Test Speed: HIGH
 Temperature: 25.3DEG
 Operators: LPC
 Test Date: 2021-12-29

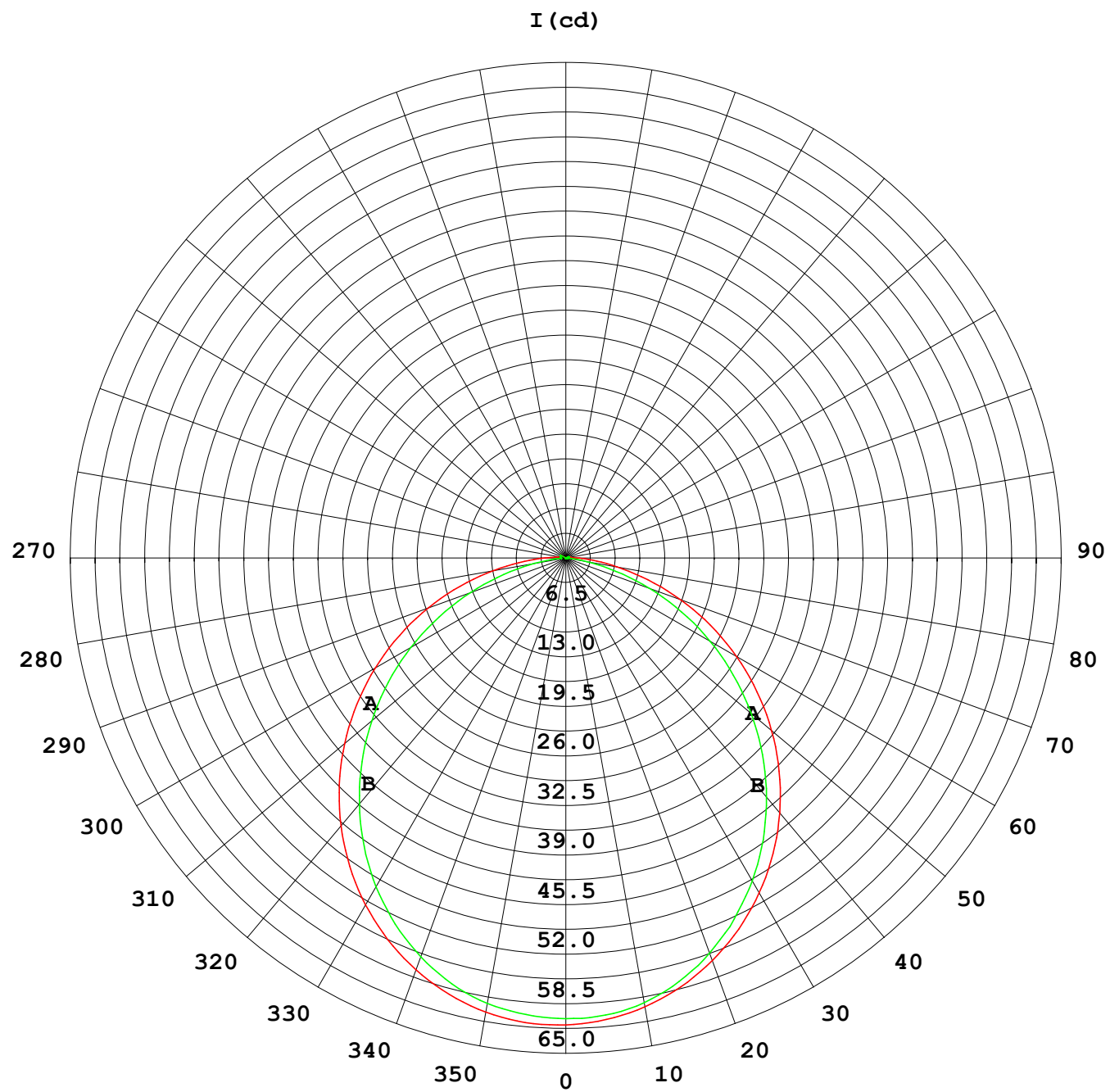
γ Range: 0 - 120DEG
 γ Interval: 1.0DEG
 Test System: EVERFINE GO-2000B_V1 SYSTEM V2.0.362
 Humidity: 65.0%
 Test Distance: 9.200m [K=1.0000]
 Remarks:

Photometric Data Table [cd]

93.0	0.8281	1.510
96.0	0.7032	0.9414
99.0	0.6732	0.6340
102.0	0.6179	0.6358
105.0	0.6134	0.6376
108.0	0.6787	0.6532
111.0	0.6960	0.6664
114.0	0.7134	0.6785
117.0	0.6730	0.6885
120.0	0.2692	0.7086

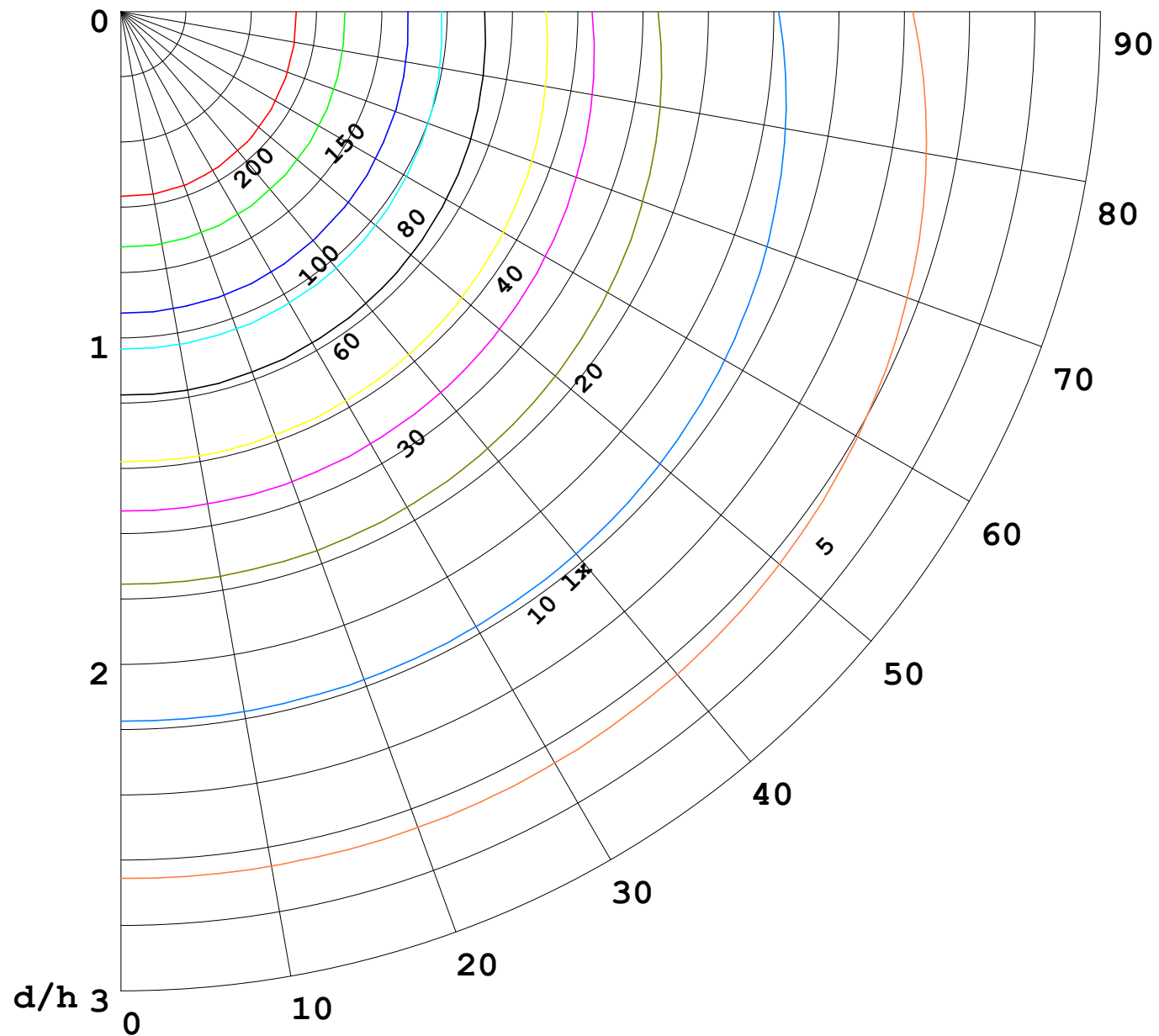
C Range: 0 - 360DEG
C Interval: 30.0DEG
Test Speed: HIGH
Temperature: 25.3DEG
Operators: LPC
Test Date: 2021-12-29

γ Range: 0 - 120DEG
γ Interval: 1.0DEG
Test System: EVERFINE GO-2000B_V1 SYSTEM V2.0.362
Humidity: 65.0%
Test Distance: 9.200m [K=1.0000]
Remarks:



1000 lm

$\kappa = 1$



F = 5000 lm
 K = 0.7
 Hcc = 0.0 m
 Hfc = 0.0 m
 Eave = 100 lx

	Pcc	Pw	Pfc
—	70	50	30
—	50	30	20

