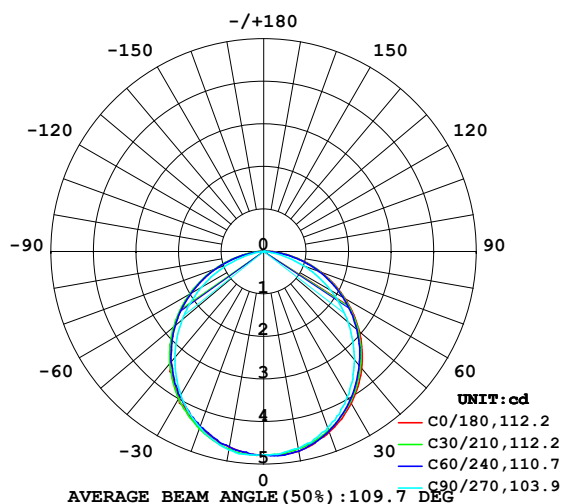


## LUMINAIRE PHOTOMETRIC TEST REPORT

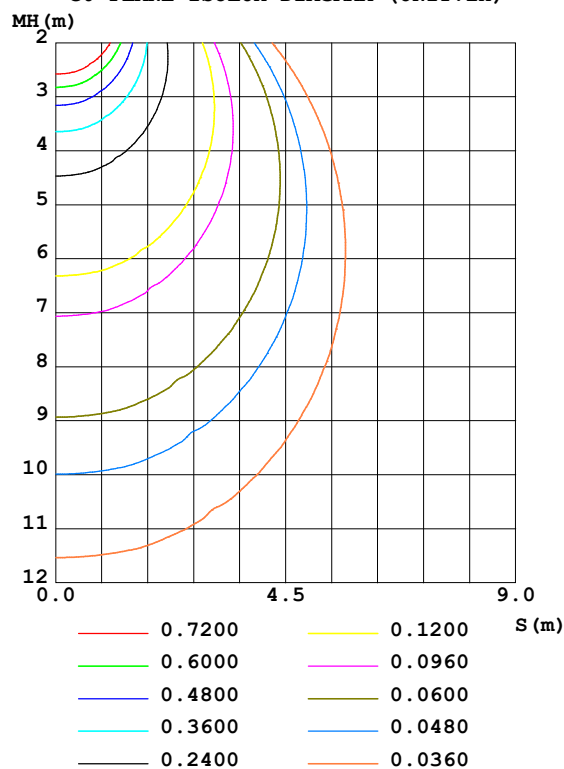
Test:U:24.00V I:0.1911A P:4.586W PF:1.000 Freq:50.00Hz Lamp Flux:13.4136x1 lm		
NAME: SF15-24V-5050-56-SPI4-RGBW(4000)-B	TYPE: 硅胶	WEIGHT:
SPEC.:	DIM.: 21*11.5MM	SERIAL No.:2021122918
MFR.: OLYMPIA	SUR.:1*0.0115	Shielding Angle:

DATA OF LAMP		PHOTOMETRIC DATA				Eff: 2.92 lm/W
MODEL	5050	I <sub>max</sub> (cd)	4.810	S/MH (C0/180)	1.24	
NOMINAL POWER (W)	12	LOR (%)	100.0	S/MH (C90/270)	1.22	
RATED VOLTAGE (V)	24	TOTAL FLUX (lm)	13.414	η UP, DN (C0-180)	0.2, 50.5	
NOMINAL FLUX (lm)	13.4136	CIE CLASS	DIRECT	η UP, DN (C180-360)	0.0, 49.3	
LAMPS INSIDE	1	η up (%)	0.2	CIBSE SHR NOM	1.25	
TEST VOLTAGE (V)	24	η down (%)	99.8	CIBSE SHR MAX	1.35	

LUMINOUS INTENSITY DISTRIBUTION DIAGRAM



C0 PLANE ISOLUX DIAGRAM (UNIT:lx)



C Range: 0 - 360DEG  
 C Interval: 30.0DEG  
 Test Speed: HIGH  
 Temperature: 25.3DEG  
 Operators: LPC  
 Test Date: 2021-12-29

γ Range: 0 - 120DEG  
 γ Interval: 1.0DEG  
 Test System: EVERFINE GO-2000B\_V1 SYSTEM V2.0.362  
 Humidity: 65.0%  
 Test Distance: 9.200m [K=1.0000]  
 Remarks:

## ZONAL FLUX DIAGRAM

## ZONAL FLUX DIAGRAM:

$\gamma$	C0	C45	C90	C135	C180	C225	C270	C315	$\gamma$	$\Phi$ zone	$\Phi$ total	%lum, lamp
10	4.765	4.734	4.704	4.689	4.674	4.689	4.734	4.739	0- 10	0.4541	0.4541	3.39,3.39
20	4.519	4.483	4.407	4.413	4.392	4.407	4.393	4.453	10- 20	1.297	1.751	13.1,13.1
30	4.122	4.066	3.940	3.990	3.990	3.963	3.896	4.028	20- 30	1.952	3.703	27.6,27.6
40	3.584	3.516	3.326	3.430	3.412	3.415	3.242	3.500	30- 40	2.336	6.039	45,45
50	2.936	2.880	2.597	2.754	2.733	2.742	2.504	2.872	40- 50	2.404	8.443	62.9,62.9
60	2.212	2.161	1.808	2.003	1.984	1.990	1.694	2.153	50- 60	2.151	10.59	79,79
70	1.448	1.402	1.009	1.224	1.210	1.214	0.8903	1.410	60- 70	1.624	12.22	91.1,91.1
80	0.6792	0.6408	0.2757	0.4725	0.4668	0.4648	0.1664	0.6407	70- 80	0.9167	13.13	97.9,97.9
90	0.1411	0.0829	0.0050	0.0553	0.0299	0.0303	0	0.0978	80- 90	0.2523	13.39	99.8,99.8
100	0.0001	0.0050	0.0050	0.0201	0	0.0000	0	0	90-100	0.0191	13.41	99.9,99.9
110	0	0.0050	0.0050	0.0126	0	0	0	0	100-110	0.0039	13.41	100,100
120	0	0.0050	0.0050	0.0126	0	0	0	0	110-120	0.0033	13.41	100,100
130	0	0	0	0	0	0	0	0	120-130	0.0002	13.41	100,100
140	0	0	0	0	0	0	0	0	130-140	0	13.41	100,100
150	0	0	0	0	0	0	0	0	140-150	0	13.41	100,100
160	0	0	0	0	0	0	0	0	150-160	0	13.41	100,100
170	0	0	0	0	0	0	0	0	160-170	0	13.41	100,100
180	0	0	0	0	0	0	0	0	170-180	0	13.41	100,100
DEG	LUMINOUS INTENSITY:cd									UNIT:lm		

Conical surface Flux(90deg): 7.2526 lm

%lum = 54.1%

%lamp = 54.1%

Conical surface Flux(120deg): 10.594 lm

%lum = 79.0%

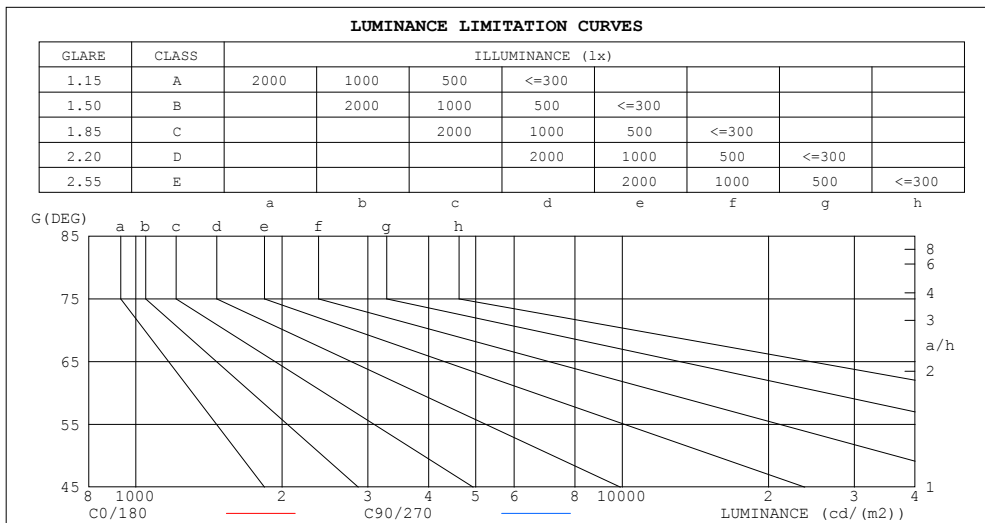
%lamp = 79.0%

C Range: 0 - 360DEG  
 C Interval: 30.0DEG  
 Test Speed: HIGH  
 Temperature:25.3DEG  
 Operators:LPC  
 Test Date:2021-12-29

$\gamma$  Range: 0 - 120DEG  
 $\gamma$  Interval: 1.0DEG  
 Test System:EVERFINE GO-2000B\_V1 SYSTEM V2.0.362  
 Humidity:65.0%  
 Test Distance:9.200m [K=1.0000]  
 Remarks:

## LUMINANCE LIMITATION CURVES

Test:U:24.00V I:0.1911A P:4.586W PF:1.000 Freq:50.00Hz Lamp Flux:13.4136x1 lm		
NAME: SF15-24V-5050-56-SPI4-RGBW(4000) -B	TYPE: 硅胶	WEIGHT:
SPEC.:	DIM.: 21*11.5MM	SERIAL No.:2021122918
MFR.: OLYMPIA	SUR.:1*0.0115	Shielding Angle:



LUMINANCE cd/(m2)		
G (DEG)	C0/180	C90/270
85	352	10
80	340	138
75	357	207
70	368	257
65	377	291
60	385	315
55	392	334
50	397	351
45	402	364

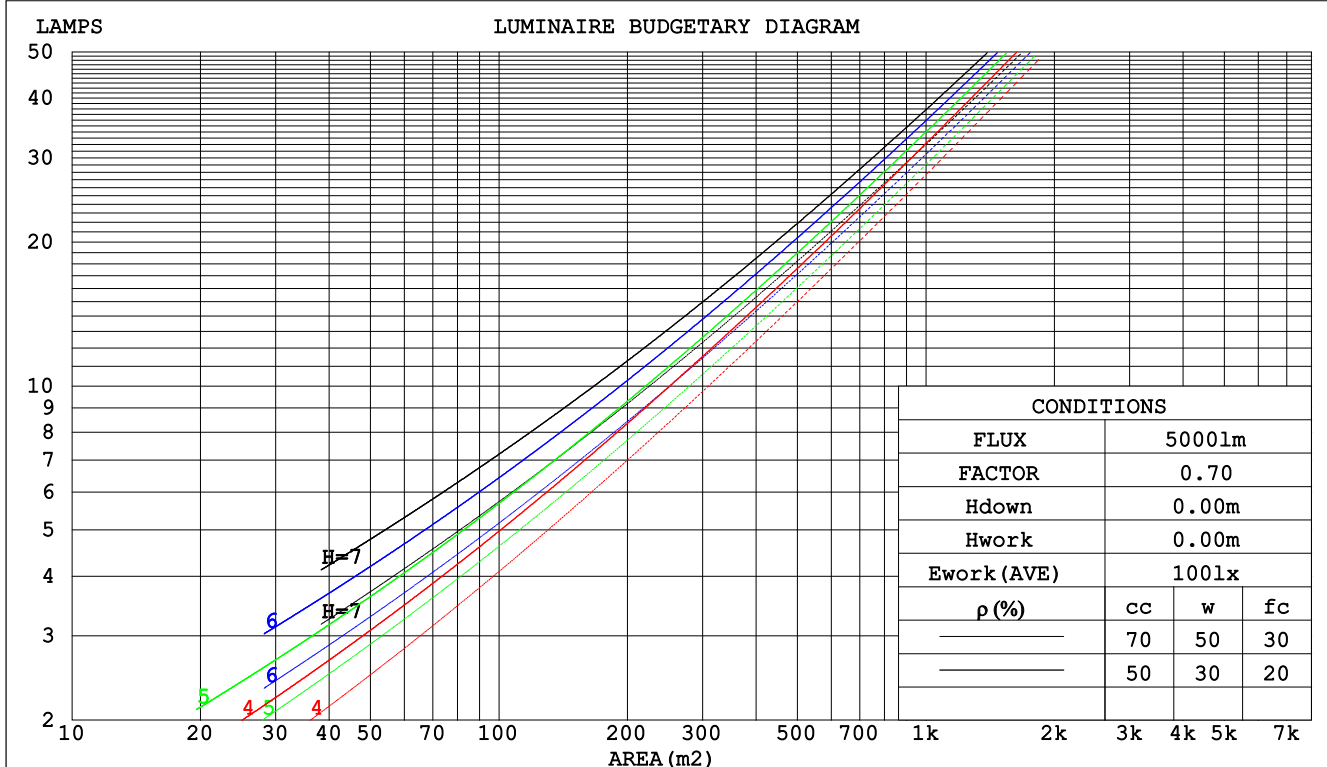
C Range: 0 - 360DEG  
C Interval: 30.0DEG  
Test Speed: HIGH  
Temperature:25.3DEG  
Operators:LPC  
Test Date:2021-12-29

$\gamma$  Range: 0 - 120DEG  
 $\gamma$  Interval: 1.0DEG  
Test System:EVERFINE GO-2000B\_V1 SYSTEM V2.0.362  
Humidity:65.0%  
Test Distance:9.200m [K=1.0000]  
Remarks:

## CU AND LUMINAIRE BUDGETARY ESTIMATE DIAGRAM

Test:U:24.00V I:0.1911A P:4.586W PF:1.000 Freq:50.00Hz Lamp Flux:13.4136x1 lm		
NAME: SF15-24V-5050-56-SPI4-RGBW(4000)-B	TYPE:硅胶	WEIGHT:
SPEC.:	DIM.: 21*11.5MM	SERIAL No.:2021122918
MFR.: OLYMPIA	SUR.:1*0.0115	Shielding Angle:

pcc	80%			70%			50%			30%			10%			0
pw	50%	30%	10%	50%	30%	10%	50%	30%	10%	50%	30%	10%	50%	30%	10%	0
pfc	20%			20%			20%			20%			20%			0
RCR	RCR:Room Cavity Ratio						Coefficients of Utilization(CU)									
0.0	1.19	1.19	1.19	1.16	1.16	1.16	1.11	1.11	1.11	1.06	1.06	1.06	1.02	1.02	1.02	.00
1.0	1.04	.00	.96	1.02	.98	.94	.97	.94	.91	.93	.91	.88	.90	.88	.86	.84
2.0	.91	.84	.78	.89	.82	.77	.85	.80	.75	.82	.77	.73	.79	.75	.72	.70
3.0	.80	.71	.65	.78	.70	.64	.75	.68	.63	.72	.67	.62	.70	.65	.61	.59
4.0	.70	.62	.55	.69	.61	.55	.67	.59	.54	.64	.58	.53	.62	.57	.52	.50
5.0	.63	.54	.47	.62	.53	.47	.60	.52	.46	.58	.51	.46	.56	.50	.45	.43
6.0	.57	.48	.41	.56	.47	.41	.54	.46	.41	.52	.45	.40	.51	.45	.40	.38
7.0	.51	.43	.36	.51	.42	.36	.49	.41	.36	.48	.41	.36	.46	.40	.35	.33
8.0	.47	.38	.33	.46	.38	.32	.45	.37	.32	.44	.37	.32	.42	.36	.32	.30
9.0	.43	.35	.29	.42	.35	.29	.41	.34	.29	.40	.34	.29	.39	.33	.29	.27
10.0	.40	.32	.27	.39	.32	.26	.38	.31	.26	.37	.31	.26	.36	.30	.26	.24



C Range: 0 - 360DEG  
 C Interval: 30.0DEG  
 Test Speed: HIGH  
 Temperature:25.3DEG  
 Operators:LPC  
 Test Date:2021-12-29

$\gamma$  Range: 0 - 120DEG  
 $\gamma$  Interval: 1.0DEG  
 Test System:EVERFINE GO-2000B\_V1 SYSTEM V2.0.362  
 Humidity:65.0%  
 Test Distance:9.200m [K=1.0000]  
 Remarks:

### WEC AND CCEC

Test:U:24.00V I:0.1911A P:4.586W PF:1.000 Freq:50.00Hz Lamp Flux:13.4136x1 lm		
NAME: SF15-24V-5050-56-SPI4-RGBW(4000)-B	TYPE:硅胶	WEIGHT:
SPEC.:	DIM.: 21*11.5MM	SERIAL No.:2021122918
MFR.: OLYMPIA	SUR.:1*0.0115	Shielding Angle:

pcc	80%			70%			50%			30%			10%			0	
pw	50%	30%	10%	50%	30%	10%	50%	30%	10%	50%	30%	10%	50%	30%	10%	0	
pfc	20%			20%			20%			20%			20%			0	
RCR	RCR:Room Cavity Ratio						Wall Exitance Coefficients(WEC)										
0.0																	
1.0	.308	.175	.055	.301	.172	.055	.288	.165	.053	.275	.159	.051	.264	.153	.049		
2.0	.290	.159	.049	.284	.156	.048	.272	.151	.047	.261	.146	.046	.251	.142	.045		
3.0	.269	.143	.043	.263	.141	.042	.253	.137	.042	.243	.133	.041	.234	.130	.040		
4.0	.248	.129	.038	.243	.127	.038	.234	.124	.037	.225	.121	.036	.217	.118	.036		
5.0	.229	.117	.034	.225	.116	.034	.217	.113	.033	.209	.110	.033	.202	.108	.032		
6.0	.213	.107	.031	.209	.106	.030	.202	.103	.030	.195	.101	.030	.188	.099	.029		
7.0	.198	.098	.028	.195	.097	.028	.188	.095	.027	.182	.093	.027	.176	.092	.027		
8.0	.185	.090	.025	.182	.090	.025	.176	.088	.025	.171	.086	.025	.165	.085	.025		
9.0	.173	.084	.023	.171	.083	.023	.165	.082	.023	.161	.080	.023	.156	.079	.023		
10.0	.163	.078	.022	.161	.078	.022	.156	.076	.022	.151	.075	.021	.147	.074	.021		

pcc	80%			70%			50%			30%			10%			0
pw	50%	30%	10%	50%	30%	10%	50%	30%	10%	50%	30%	10%	50%	30%	10%	0
pfc	20%			20%			20%			20%			20%			0
RCR	RCR:Room Cavity Ratio						Ceiling Cavity Exitance Coefficients(CCEC)									
0.0	.192	.192	.192	.164	.164	.164	.112	.112	.112	.064	.064	.064	.021	.021	.021	
1.0	.182	.158	.136	.155	.135	.117	.106	.093	.081	.061	.054	.047	.020	.017	.015	
2.0	.174	.133	.100	.149	.115	.086	.102	.079	.060	.059	.046	.035	.019	.015	.011	
3.0	.166	.116	.076	.142	.100	.066	.098	.069	.046	.056	.041	.027	.018	.013	.009	
4.0	.158	.103	.060	.136	.089	.052	.093	.062	.037	.054	.036	.022	.017	.012	.007	
5.0	.151	.092	.049	.129	.080	.043	.089	.056	.030	.052	.033	.018	.017	.011	.006	
6.0	.144	.084	.041	.123	.073	.036	.085	.051	.025	.049	.030	.015	.016	.010	.005	
7.0	.137	.077	.035	.118	.067	.030	.081	.047	.022	.047	.028	.013	.015	.009	.004	
8.0	.130	.071	.030	.112	.062	.026	.078	.043	.019	.045	.026	.011	.015	.008	.004	
9.0	.124	.066	.027	.107	.057	.023	.074	.040	.017	.043	.024	.010	.014	.008	.003	
10.0	.119	.062	.024	.102	.054	.021	.071	.038	.015	.041	.022	.009	.013	.007	.003	

C Range: 0 - 360DEG  
C Interval: 30.0DEG  
Test Speed: HIGH  
Temperature:25.3DEG  
Operators:LPC  
Test Date:2021-12-29

γ Range: 0 - 120DEG  
γ Interval: 1.0DEG  
Test System:EVERFINE GO-2000B\_V1 SYSTEM V2.0.362  
Humidity:65.0%  
Test Distance:9.200m [K=1.0000]  
Remarks:

UGR(Unified Glare Rating) Table

Test:U:24.00V I:0.1911A P:4.586W PF:1.000 Freq:50.00Hz Lamp Flux:13.4136x1 lm											
NAME: SF15-24V-5050-56-SPI4-RGBW(4000)-B					TYPE:硅胶			WEIGHT:			
SPEC.:					DIM.: 21*11.5MM			SERIAL No.:2021122918			
MFR.: OLYMPIA					SUR.:1*0.0115			Shielding Angle:			
ceiling/cavity	0.7	0.7	0.5	0.5	0.3	0.7	0.7	0.5	0.5	0.3	
walls	0.5	0.3	0.5	0.3	0.3	0.5	0.3	0.5	0.3	0.3	
working plane	0.2	0.2	0.2	0.2	0.2	0.2	0.2	0.2	0.2	0.2	
Room dimensions	Viewed crosswise					Viewed endwise					
x = 2H y = 2H	24.8	26.3	25.0	26.5	26.7	24.2	25.8	24.5	26.0	26.2	
	3H	26.4	27.8	26.7	28.0	28.3	25.6	27.0	25.9	27.2	27.4
	4H	27.1	28.4	27.4	28.7	29.0	26.0	27.3	26.3	27.6	27.8
	6H	27.7	28.9	28.0	29.2	29.5	26.2	27.4	26.5	27.7	28.0
	8H	27.9	29.1	28.2	29.4	29.6	26.2	27.4	26.5	27.7	28.0
	12H	28.0	29.2	28.4	29.5	29.8	26.2	27.3	26.5	27.6	27.9
4H	2H	25.4	26.7	25.7	27.0	27.2	25.0	26.3	25.3	26.6	26.8
	3H	27.2	28.4	27.6	28.7	29.0	26.6	27.8	26.9	28.1	28.4
	4H	28.1	29.1	28.4	29.4	29.8	27.2	28.3	27.6	28.6	28.9
	6H	28.7	29.7	29.1	30.0	30.4	27.5	28.5	27.9	28.8	29.2
	8H	29.0	29.9	29.4	30.2	30.6	27.6	28.5	28.0	28.8	29.2
	12H	29.2	30.0	29.6	30.4	30.8	27.6	28.4	28.0	28.8	29.2
8H	4H	28.3	29.2	28.8	29.6	30.0	27.6	28.5	28.0	28.8	29.2
	6H	29.2	29.9	29.6	30.3	30.8	28.2	28.9	28.6	29.3	29.7
	8H	29.5	30.2	30.0	30.6	31.1	28.3	29.0	28.8	29.4	29.9
	12H	29.9	30.4	30.3	30.9	31.3	28.4	28.9	28.8	29.4	29.9
12H	4H	28.4	29.2	28.8	29.6	30.0	27.6	28.4	28.1	28.8	29.2
	6H	29.3	29.9	29.7	30.3	30.8	28.3	28.9	28.7	29.4	29.8
	8H	29.7	30.2	30.1	30.7	31.1	28.5	29.1	29.0	29.5	30.0
Variations with the observer position at spacings:											
S = 1.0H	+ 0.1 / - 0.2					+ 0.2 / - 0.2					
1.5H	+ 0.2 / - 0.3					+ 0.3 / - 0.4					
2.0H	+ 0.1 / - 0.3					+ 0.2 / - 0.5					

CIE Pub.117, 13.41 lm Total Lamp Luminous Flux Correct (8log(F/F0) = -15.0)

C Range: 0 - 360DEG  
C Interval: 30.0DEG  
Test Speed: HIGH  
Temperature:25.3DEG  
Operators:LPC  
Test Date:2021-12-29

γ Range: 0 - 120DEG  
γ Interval: 1.0DEG  
Test System:EVERFINE GO-2000B\_V1 SYSTEM V2.0.362  
Humidity:65.0%  
Test Distance:9.200m [K=1.0000]  
Remarks:

### UTILIZATION FACTORS TABLE

Test:U:24.00V I:0.1911A P:4.586W PF:1.000 Freq:50.00Hz Lamp Flux:13.4136x1 lm		
NAME: SF15-24V-5050-56-SPI4-RGBW(4000)-B	TYPE:硅胶	WEIGHT:
SPEC.:	DIM.: 21*11.5MM	SERIAL No.:2021122918
MFR.: OLYMPIA	SUR.:1*0.0115	Shielding Angle:

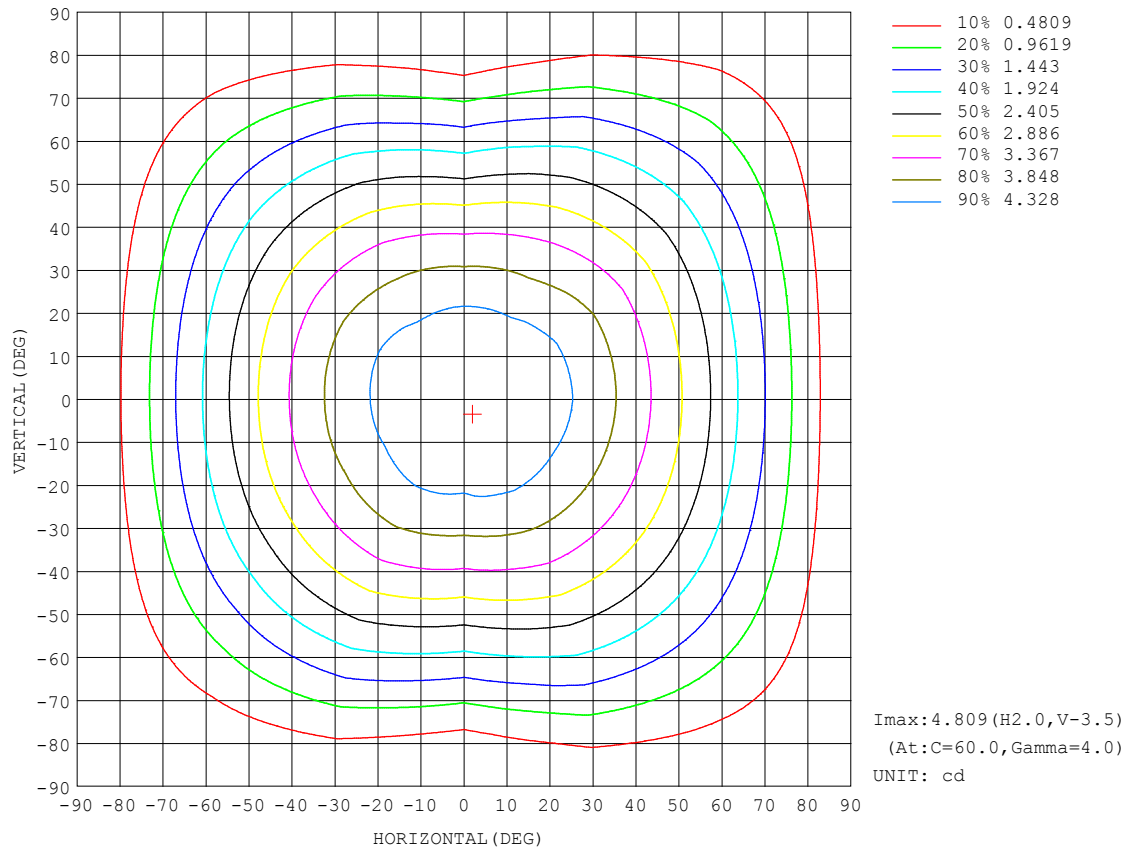
REFLECTANCE										
Ceiling	0.8	0.8	0.8	0.7	0.7	0.7	0.5	0.5	0.5	0
Walls	0.7	0.5	0.3	0.7	0.5	0.3	0.7	0.5	0.3	0
Working plane	0.2	0.2	0.2	0.2	0.2	0.2	0.2	0.2	0.2	0
ROOM INDEX	UTILIZATION FACTORS (PERCENT) $k(RI) \times RCR = 5$									
$k = 0.60$	58	46	39	57	46	39	56	45	39	33
0.80	68	56	49	67	56	49	65	55	48	41
1.00	76	65	58	75	64	58	73	66	57	50
1.25	83	73	66	82	72	65	79	71	64	57
1.50	88	78	71	87	77	71	84	76	70	62
2.00	95	87	80	93	85	79	90	83	78	70
2.50	99	91	85	97	90	84	93	87	82	74
3.00	102	95	90	100	94	89	96	91	87	78
4.00	106	101	96	104	99	95	100	95	92	83
5.00	109	104	100	106	102	98	102	98	95	86
ROOM INDEX	UF(total)									Direct
According to DIN EN 13032-2 2004			Suspended					SHRNOM = 1.25		

C Range: 0 - 360DEG  
C Interval: 30.0DEG  
Test Speed: HIGH  
Temperature:25.3DEG  
Operators:LPC  
Test Date:2021-12-29

$\gamma$  Range: 0 - 120DEG  
 $\gamma$  Interval: 1.0DEG  
Test System:EVERFINE GO-2000B\_V1 SYSTEM V2.0.362  
Humidity:65.0%  
Test Distance:9.200m [K=1.0000]  
Remarks:

## ISOCANDELA DIAGRAM

Test:U:24.00V I:0.1911A P:4.586W PF:1.000 Freq:50.00Hz Lamp Flux:13.4136x1 lm		
NAME: SF15-24V-5050-56-SPI4-RGBW(4000)-B	TYPE: 硅胶	WEIGHT:
SPEC.:	DIM.: 21*11.5MM	SERIAL No.:2021122918
MFR.: OLYMPIA	SUR.:1*0.0115	Shielding Angle:



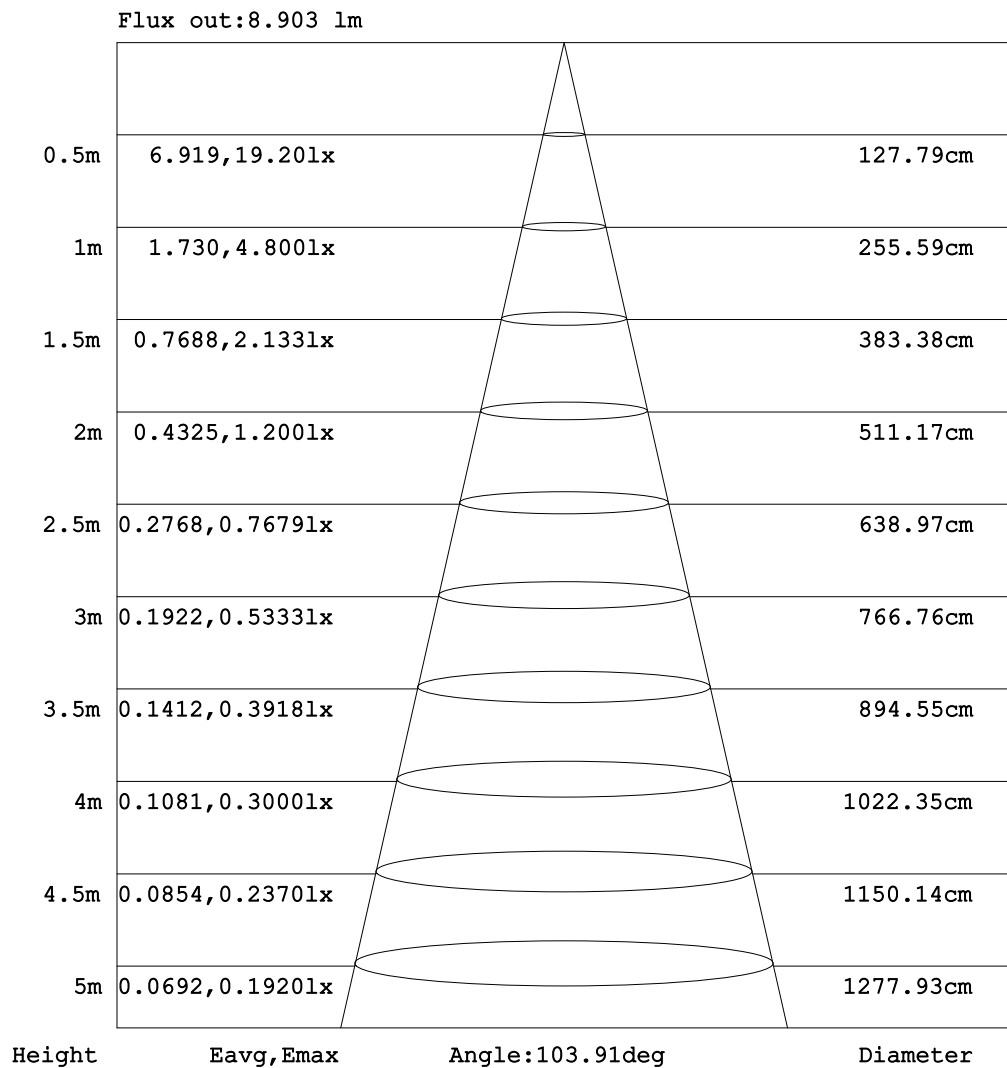
C Range: 0 - 360DEG  
C Interval: 30.0DEG  
Test Speed: HIGH  
Temperature: 25.3DEG  
Operators: LPC  
Test Date: 2021-12-29

$\gamma$  Range: 0 - 120DEG  
 $\gamma$  Interval: 1.0DEG  
Test System: EVERFINE GO-2000B\_V1 SYSTEM V2.0.362  
Humidity: 65.0%  
Test Distance: 9.200m [K=1.0000]  
Remarks:



### AAI Figure

Test:U:24.00V I:0.1911A P:4.586W PF:1.000 Freq:50.00Hz Lamp Flux:13.4136x1 lm		
NAME: SF15-24V-5050-56-SPI4-RGBW(4000)-B	TYPE: 硅胶	WEIGHT:
SPEC.:	DIM.: 21*11.5MM	SERIAL No.:2021122918
MFR.: OLYMPIA	SUR.:1*0.0115	Shielding Angle:



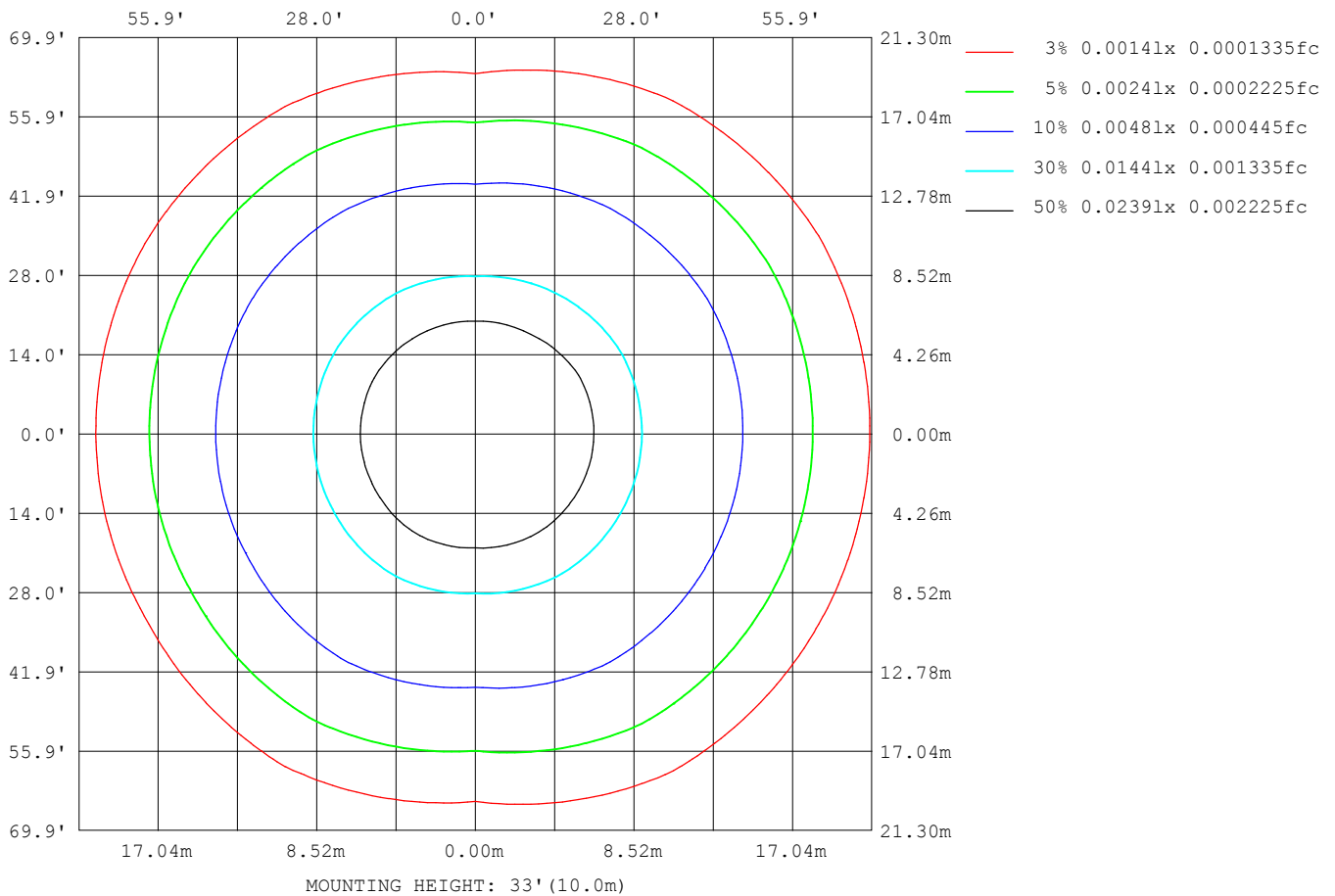
Note:The Curves indicate the illuminated area and the average illumination when the luminaire is at different distance.

C Range: 0 - 360DEG  
C Interval: 30.0DEG  
Test Speed: HIGH  
Temperature:25.3DEG  
Operators:LPC  
Test Date:2021-12-29

γ Range: 0 - 120DEG  
γ Interval: 1.0DEG  
Test System:EVERFINE GO-2000B\_V1 SYSTEM V2.0.362  
Humidity:65.0%  
Test Distance:9.200m [K=1.0000]  
Remarks:

## ISOLUX DIAGRAM

Test:U:24.00V I:0.1911A P:4.586W PF:1.000 Freq:50.00Hz Lamp Flux:13.4136x1 lm		
NAME: SF15-24V-5050-56-SPI4-RGBW(4000)-B	TYPE: 硅胶	WEIGHT:
SPEC.:	DIM.: 21*11.5MM	SERIAL No.:2021122918
MFR.: OLYMPIA	SUR.:1*0.0115	Shielding Angle:



C Range: 0 - 360DEG  
C Interval: 30.0DEG  
Test Speed: HIGH  
Temperature:25.3DEG  
Operators:LPC  
Test Date:2021-12-29

γ Range: 0 - 120DEG  
γ Interval: 1.0DEG  
Test System:EVERFINE GO-2000B\_V1 SYSTEM V2.0.362  
Humidity:65.0%  
Test Distance:9.200m [K=1.0000]  
Remarks:

## LED Avg.L Report

Test:U:24.00V I:0.1911A P:4.586W PF:1.000 Freq:50.00Hz Lamp Flux:13.4136x1 lm		
NAME: SF15-24V-5050-56-SPI4-RGBW(4000)-B	TYPE:硅胶	WEIGHT:
SPEC.:	DIM.: 21*11.5MM	SERIAL No.:2021122918
MFR.: OLYMPIA	SUR.:1*0.0115	Shielding Angle:

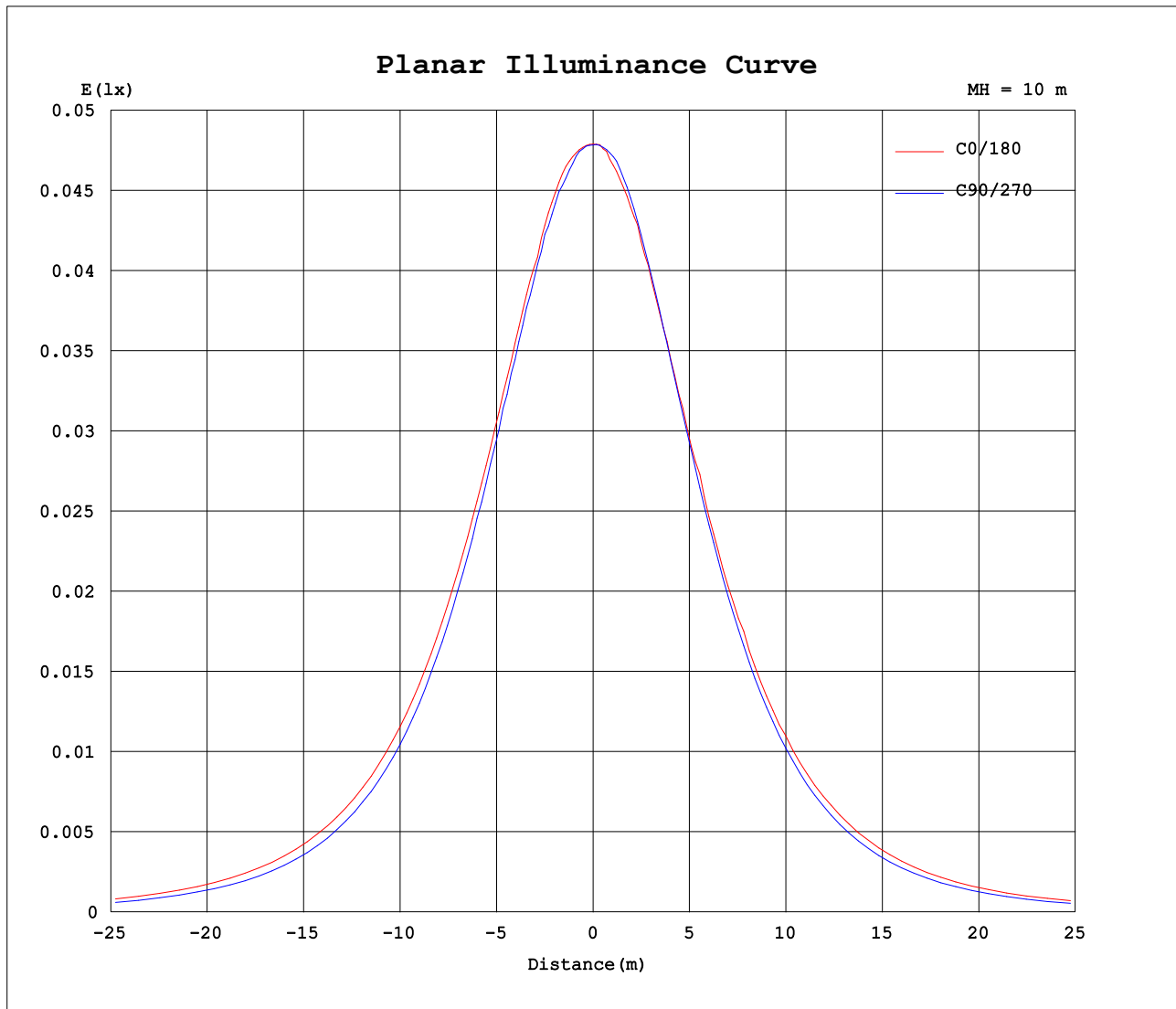
AvgL	cd/m2
L_0~180 (65) av	352
L_0~180 (75) av	316
L_0~180 (85) av	273
L_90~270 (65) av	279
L_90~270 (75) av	187
L_90~270 (85) av	5
L_45 (65) av	353
L_45 (75) av	317
L_45 (85) av	253

Standard: GB/T 29293-2012

C Range: 0 - 360DEG  
C Interval: 30.0DEG  
Test Speed: HIGH  
Temperature:25.3DEG  
Operators:LPC  
Test Date:2021-12-29

γ Range: 0 - 120DEG  
γ Interval: 1.0DEG  
Test System:EVERFINE GO-2000B\_V1 SYSTEM V2.0.362  
Humidity:65.0%  
Test Distance:9.200m [K=1.0000]  
Remarks:

## Planar Illuminance Curve



C Range: 0 - 360DEG  
C Interval: 30.0DEG  
Test Speed: HIGH  
Temperature: 25.3DEG  
Operators: LPC  
Test Date: 2021-12-29

$\gamma$  Range: 0 - 120DEG  
 $\gamma$  Interval: 1.0DEG  
Test System: EVERFINE GO-2000B\_V1 SYSTEM V2.0.362  
Humidity: 65.0%  
Test Distance: 9.200m [K=1.0000]  
Remarks:

## LUMINOUS DISTRIBUTION INTENSITY DATA

Test:U:24.00V I:0.1911A P:4.586W PF:1.000 Freq:50.00Hz Lamp Flux:13.4136x1 lm		
NAME: SF15-24V-5050-56-SPI4-RGBW(4000)-B	TYPE:硅胶	WEIGHT:
SPEC.:	DIM.: 21*11.5MM	SERIAL No.:2021122918
MFR.: OLYMPIA	SUR.:1*0.0115	Shielding Angle:

Table--1

UNIT: cd

C (DEG) γ (DEG)	0	30	60	90	120	150	180	210	240	270	300	330						
0	4.79	4.79	4.79	4.78	4.79	4.80	4.79	4.79	4.79	4.78	4.79	4.80						
5	4.79	4.77	4.81	4.77	4.79	4.74	4.75	4.78	4.74	4.79	4.77	4.80						
10	4.76	4.70	4.76	4.70	4.72	4.65	4.67	4.71	4.66	4.73	4.70	4.77						
15	4.66	4.62	4.65	4.57	4.60	4.55	4.55	4.59	4.54	4.59	4.57	4.68						
20	4.52	4.47	4.49	4.41	4.44	4.38	4.39	4.43	4.38	4.39	4.40	4.51						
25	4.34	4.30	4.29	4.22	4.24	4.18	4.22	4.23	4.15	4.17	4.18	4.33						
30	4.12	4.08	4.05	3.94	4.02	3.96	3.99	4.00	3.93	3.90	3.93	4.12						
35	3.87	3.82	3.78	3.66	3.75	3.68	3.70	3.73	3.66	3.59	3.67	3.88						
40	3.58	3.54	3.49	3.33	3.46	3.40	3.41	3.44	3.39	3.24	3.41	3.59						
45	3.27	3.24	3.19	2.96	3.14	3.08	3.11	3.12	3.06	2.89	3.12	3.29						
50	2.94	2.90	2.86	2.60	2.79	2.72	2.73	2.76	2.72	2.50	2.79	2.96						
55	2.58	2.54	2.51	2.20	2.43	2.35	2.38	2.40	2.36	2.10	2.44	2.60						
60	2.21	2.18	2.15	1.81	2.04	1.96	1.98	2.01	1.97	1.69	2.07	2.23						
65	1.83	1.80	1.77	1.42	1.65	1.56	1.59	1.62	1.58	1.29	1.71	1.86						
70	1.45	1.42	1.39	1.01	1.27	1.18	1.21	1.23	1.20	0.89	1.34	1.48						
75	1.06	1.02	1.01	0.62	0.88	0.79	0.82	0.85	0.80	0.50	0.95	1.09						
80	0.68	0.65	0.63	0.28	0.51	0.44	0.47	0.49	0.44	0.17	0.57	0.71						
85	0.35	0.31	0.30	0.01	0.22	0.17	0.20	0.22	0.13	0.00	0.23	0.36						
90	0.14	0.09	0.08	0.01	0.06	0.05	0.03	0.06	0.00	0.00	0.06	0.14						
95	0.04	0.00	0.02	0.01	0.04	0.01	0.00	0.01	0.00	0.00	0.00	0.02						
100	0.00	0.00	0.01	0.01	0.03	0.01	0.00	0.00	0.00	0.00	0.00	0.00						
105	0.00	0.00	0.01	0.01	0.02	0.01	0.00	0.00	0.00	0.00	0.00	0.00						
110	0.00	0.00	0.01	0.01	0.02	0.01	0.00	0.00	0.00	0.00	0.00	0.00						
115	0.00	0.00	0.01	0.01	0.02	0.01	0.00	0.00	0.00	0.00	0.00	0.00						
120	0.00	0.00	0.01	0.01	0.02	0.01	0.00	0.00	0.00	0.00	0.00	0.00						
125	0.00	0.00	0.00	0.00	0.00	0.00	0.00	0.00	0.00	0.00	0.00	0.00						
130	0.00	0.00	0.00	0.00	0.00	0.00	0.00	0.00	0.00	0.00	0.00	0.00						
135	0.00	0.00	0.00	0.00	0.00	0.00	0.00	0.00	0.00	0.00	0.00	0.00						
140	0.00	0.00	0.00	0.00	0.00	0.00	0.00	0.00	0.00	0.00	0.00	0.00						
145	0.00	0.00	0.00	0.00	0.00	0.00	0.00	0.00	0.00	0.00	0.00	0.00						
150	0.00	0.00	0.00	0.00	0.00	0.00	0.00	0.00	0.00	0.00	0.00	0.00						
155	0.00	0.00	0.00	0.00	0.00	0.00	0.00	0.00	0.00	0.00	0.00	0.00						
160	0.00	0.00	0.00	0.00	0.00	0.00	0.00	0.00	0.00	0.00	0.00	0.00						
165	0.00	0.00	0.00	0.00	0.00	0.00	0.00	0.00	0.00	0.00	0.00	0.00						
170	0.00	0.00	0.00	0.00	0.00	0.00	0.00	0.00	0.00	0.00	0.00	0.00						
175	0.00	0.00	0.00	0.00	0.00	0.00	0.00	0.00	0.00	0.00	0.00	0.00						
180	0.00	0.00	0.00	0.00	0.00	0.00	0.00	0.00	0.00	0.00	0.00	0.00						

C Range: 0 - 360DEG  
C Interval: 30.0DEG  
Test Speed: HIGH  
Temperature:25.3DEG  
Operators:LPC  
Test Date:2021-12-29

γ Range: 0 - 120DEG  
γ Interval: 1.0DEG  
Test System:EVERFINE GO-2000B\_V1 SYSTEM V2.0.362  
Humidity:65.0%  
Test Distance:9.200m [K=1.0000]  
Remarks: