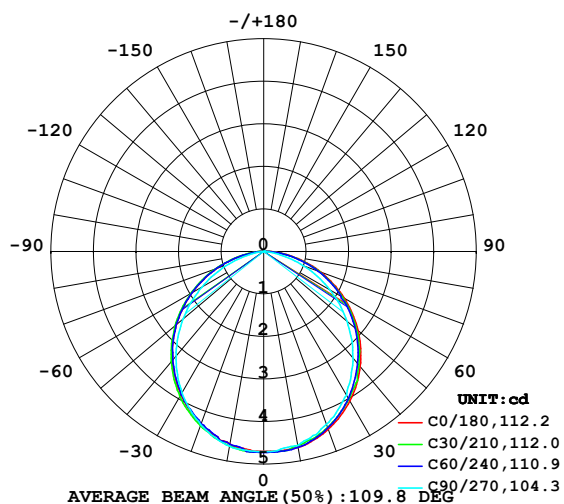


LUMINAIRE PHOTOMETRIC TEST REPORT

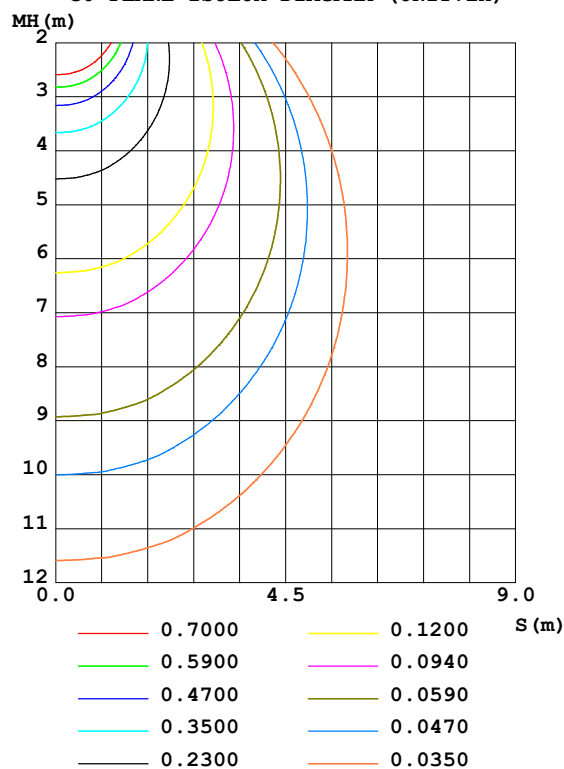
Test:U:24.00V I:0.1931A P:4.634W PF:1.000 Freq:50.00Hz Lamp Flux:13.1996x1 lm		
NAME: SF15-24V-5050-56-SPI4-RGBW(2700)-B	TYPE: 硅胶	WEIGHT:
SPEC.:	DIM.: 21mm*11.5mm	SERIAL No.:2021122908
MFR.: OLYMPIA	SUR.:1*0.0115	Shielding Angle:

DATA OF LAMP		PHOTOMETRIC DATA				Eff: 2.85 lm/W
MODEL	5050	I _{max} (cd)	4.724	S/MH(C0/180)	1.24	
NOMINAL POWER(W)	3.75	LOR(%)	100.0	S/MH(C90/270)	1.22	
RATED VOLTAGE(V)	24	TOTAL FLUX(lm)	13.200	η UP,DN(C0-180)	0.2,50.5	
NOMINAL FLUX(lm)	13.1996	CIE CLASS	DIRECT	η UP,DN(C180-360)	0.0,49.3	
LAMPS INSIDE	1	η up(%)	0.2	CIBSE SHR NOM	1.25	
TEST VOLTAGE(V)	24	η down(%)	99.8	CIBSE SHR MAX	1.35	

LUMINOUS INTENSITY DISTRIBUTION DIAGRAM



C0 PLANE ISOLUX DIAGRAM (UNIT:lx)

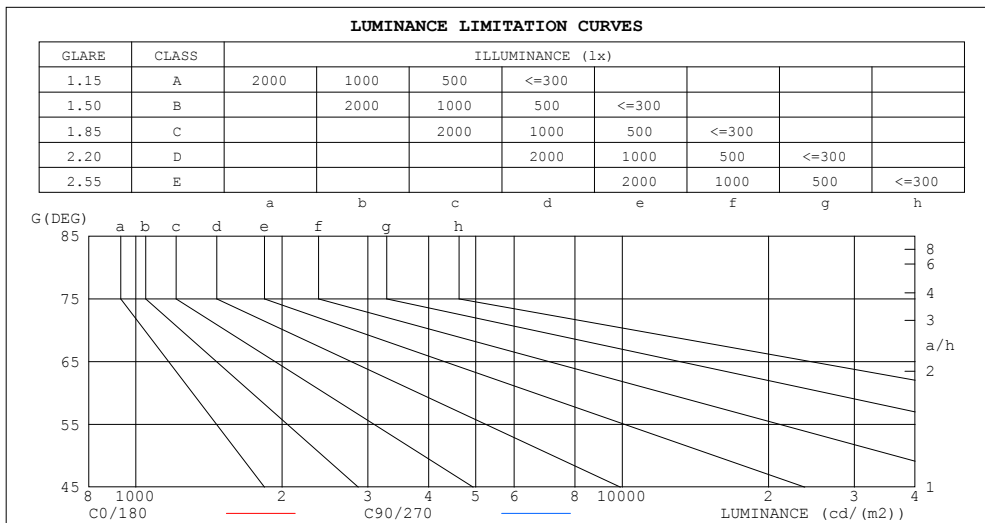


C Range: 0 - 360DEG
C Interval: 30.0DEG
Test Speed: HIGH
Temperature:25.3DEG
Operators:LPC
Test Date:2021-12-29

γ Range: 0 - 120DEG
γ Interval: 1.0DEG
Test System:EVERFINE GO-2000B_V1 SYSTEM V2.0.362
Humidity:65.0%
Test Distance:9.200m [K=1.0000]
Remarks:

LUMINANCE LIMITATION CURVES

Test:U:24.00V I:0.1931A P:4.634W PF:1.000 Freq:50.00Hz Lamp Flux:13.1996x1 lm		
NAME: SF15-24V-5050-56-SPI4-RGBW(2700) -B	TYPE: 硅胶	WEIGHT:
SPEC.:	DIM.: 21mm*11.5mm	SERIAL No.:2021122908
MFR.: OLYMPIA	SUR.:1*0.0115	Shielding Angle:



LUMINANCE cd/(m2)		
G (DEG)	C0/180	C90/270
85	352	5
80	340	141
75	355	209
70	363	254
65	370	288
60	379	312
55	386	331
50	392	347
45	397	360

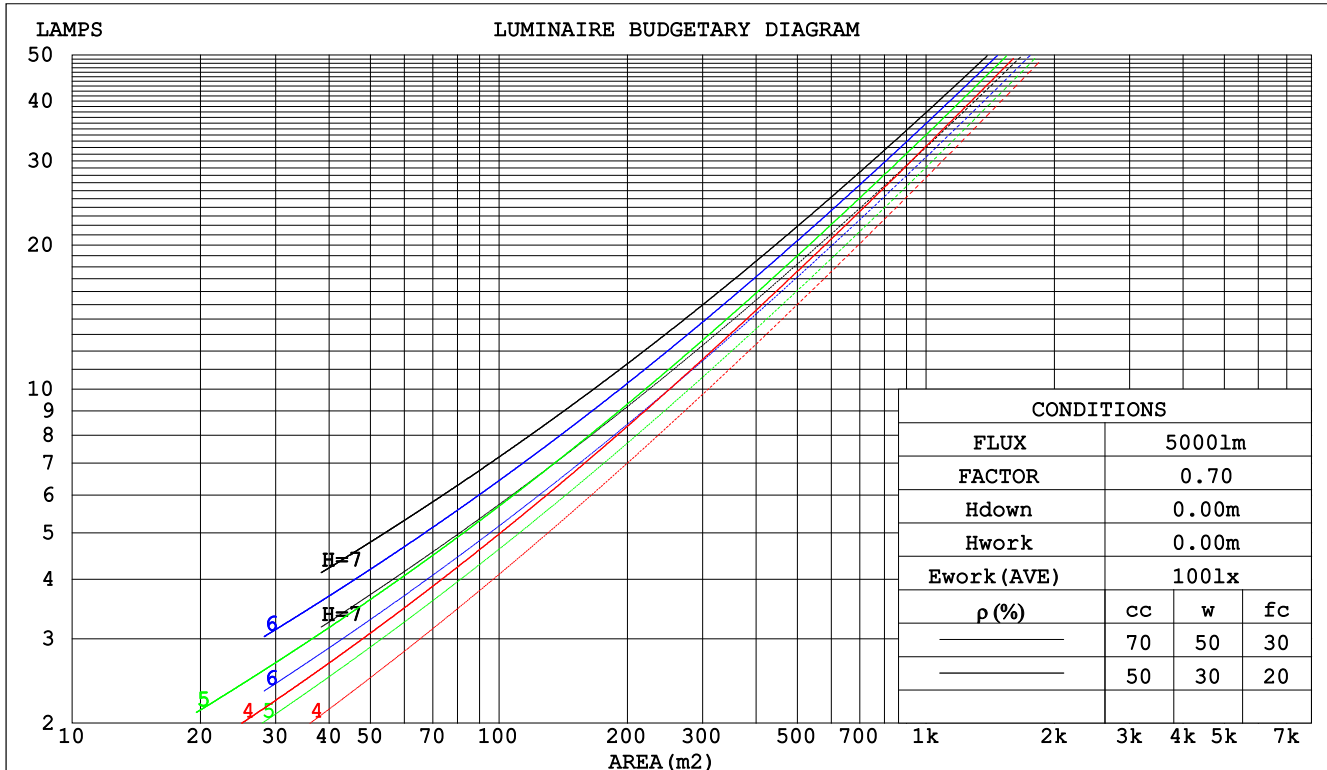
C Range: 0 - 360DEG
C Interval: 30.0DEG
Test Speed: HIGH
Temperature:25.3DEG
Operators:LPC
Test Date:2021-12-29

γ Range: 0 - 120DEG
 γ Interval: 1.0DEG
Test System:EVERFINE GO-2000B_V1 SYSTEM V2.0.362
Humidity:65.0%
Test Distance:9.200m [K=1.0000]
Remarks:

CU AND LUMINAIRE BUDGETARY ESTIMATE DIAGRAM

Test:U:24.00V I:0.1931A P:4.634W PF:1.000 Freq:50.00Hz Lamp Flux:13.1996x1 lm		
NAME: SF15-24V-5050-56-SPI4-RGBW(2700)-B	TYPE: 硅胶	WEIGHT:
SPEC.:	DIM.: 21mm*11.5mm	SERIAL No.:2021122908
MFR.: OLYMPIA	SUR.:1*0.0115	Shielding Angle:

pcc	80%			70%			50%			30%			10%			0
pw	50%	30%	10%	50%	30%	10%	50%	30%	10%	50%	30%	10%	50%	30%	10%	0
pfc	20%			20%			20%			20%			20%			0
RCR	RCR:Room Cavity Ratio						Coefficients of Utilization(CU)									
0.0	1.19	1.19	1.19	1.16	1.16	1.16	1.11	1.11	1.11	1.06	1.06	1.06	1.02	1.02	1.02	.00
1.0	1.04	.00	.96	1.02	.98	.94	.97	.94	.91	.93	.91	.88	.90	.88	.86	.84
2.0	.91	.84	.78	.89	.82	.77	.85	.80	.75	.82	.77	.73	.79	.75	.72	.70
3.0	.80	.71	.65	.78	.70	.64	.75	.68	.63	.72	.67	.62	.69	.65	.61	.59
4.0	.70	.62	.55	.69	.61	.54	.67	.59	.54	.64	.58	.53	.62	.57	.52	.50
5.0	.63	.54	.47	.62	.53	.47	.60	.52	.46	.58	.51	.46	.56	.50	.45	.43
6.0	.57	.48	.41	.56	.47	.41	.54	.46	.41	.52	.45	.40	.51	.45	.40	.38
7.0	.51	.43	.36	.51	.42	.36	.49	.41	.36	.48	.41	.36	.46	.40	.35	.33
8.0	.47	.38	.32	.46	.38	.32	.45	.37	.32	.44	.37	.32	.42	.36	.32	.30
9.0	.43	.35	.29	.42	.35	.29	.41	.34	.29	.40	.34	.29	.39	.33	.29	.27
10.0	.40	.32	.27	.39	.32	.26	.38	.31	.26	.37	.31	.26	.36	.30	.26	.24



C Range: 0 - 360DEG
 C Interval: 30.0DEG
 Test Speed: HIGH
 Temperature:25.3DEG
 Operators:LPC
 Test Date:2021-12-29

γ Range: 0 - 120DEG
 γ Interval: 1.0DEG
 Test System:EVERFINE GO-2000B_V1 SYSTEM V2.0.362
 Humidity:65.0%
 Test Distance:9.200m [K=1.0000]
 Remarks:

WEC AND CCEC

Test:U:24.00V I:0.1931A P:4.634W PF:1.000 Freq:50.00Hz Lamp Flux:13.1996x1 lm					
NAME: SF15-24V-5050-56-SPI4-RGBW(2700)-B			TYPE:硅胶		WEIGHT:
SPEC.:			DIM.: 21mm*11.5mm		SERIAL No.:2021122908
MFR.: OLYMPIA			SUR.:1*0.0115		Shielding Angle:

pcc	80%			70%			50%			30%			10%			0	
pw	50%	30%	10%	50%	30%	10%	50%	30%	10%	50%	30%	10%	50%	30%	10%	0	
pfc	20%			20%			20%			20%			20%			0	
RCR	RCR:Room Cavity Ratio						Wall Exitance Coeffcients (WEC)										
0.0																	
1.0	.308	.175	.056	.301	.172	.055	.288	.165	.053	.275	.159	.051	.264	.153	.049		
2.0	.290	.159	.049	.284	.156	.048	.272	.151	.047	.261	.147	.046	.251	.142	.045		
3.0	.269	.143	.043	.263	.141	.042	.253	.137	.042	.243	.133	.041	.234	.130	.040		
4.0	.248	.129	.038	.243	.127	.038	.234	.124	.037	.225	.121	.036	.217	.118	.036		
5.0	.229	.117	.034	.225	.116	.034	.217	.113	.033	.209	.110	.033	.202	.108	.032		
6.0	.213	.107	.031	.209	.106	.030	.202	.103	.030	.195	.101	.030	.188	.099	.029		
7.0	.198	.098	.028	.195	.097	.028	.188	.095	.027	.182	.093	.027	.176	.092	.027		
8.0	.185	.090	.025	.182	.090	.025	.176	.088	.025	.171	.086	.025	.165	.085	.025		
9.0	.174	.084	.023	.171	.083	.023	.165	.082	.023	.161	.080	.023	.156	.079	.023		
10.0	.163	.078	.022	.161	.078	.022	.156	.076	.022	.151	.075	.021	.147	.074	.021		

pcc	80%			70%			50%			30%			10%			0
pw	50%	30%	10%	50%	30%	10%	50%	30%	10%	50%	30%	10%	50%	30%	10%	0
pfc	20%			20%			20%			20%			20%			0
RCR	RCR:Room Cavity Ratio						Ceiling Cavity Exitance Coefficients(CCEC)									
0.0	.192	.192	.192	.164	.164	.164	.112	.112	.112	.064	.064	.064	.021	.021	.021	
1.0	.182	.158	.136	.156	.136	.117	.106	.093	.081	.061	.054	.047	.020	.017	.015	
2.0	.174	.134	.100	.149	.115	.086	.102	.080	.060	.059	.046	.035	.019	.015	.012	
3.0	.166	.116	.076	.142	.100	.066	.098	.070	.046	.056	.041	.027	.018	.013	.009	
4.0	.158	.103	.060	.136	.089	.052	.093	.062	.037	.054	.036	.022	.017	.012	.007	
5.0	.151	.092	.049	.130	.080	.043	.089	.056	.030	.052	.033	.018	.017	.011	.006	
6.0	.144	.084	.041	.124	.073	.036	.085	.051	.025	.049	.030	.015	.016	.010	.005	
7.0	.137	.077	.035	.118	.067	.031	.081	.047	.022	.047	.028	.013	.015	.009	.004	
8.0	.131	.071	.031	.112	.062	.027	.078	.043	.019	.045	.026	.011	.015	.008	.004	
9.0	.124	.066	.027	.107	.058	.024	.074	.040	.017	.043	.024	.010	.014	.008	.003	
10.0	.119	.062	.024	.102	.054	.021	.071	.038	.015	.041	.022	.009	.013	.007	.003	

C Range: 0 - 360DEG
 C Interval: 30.0DEG
 Test Speed: HIGH
 Temperature:25.3DEG
 Operators:LPC
 Test Date:2021-12-29

γ Range: 0 - 120DEG
 γ Interval: 1.0DEG
 Test System:EVERFINE GO-2000B_V1 SYSTEM V2.0.362
 Humidity:65.0%
 Test Distance:9.200m [K=1.0000]
 Remarks:

UTILIZATION FACTORS TABLE

Test:U:24.00V I:0.1931A P:4.634W PF:1.000 Freq:50.00Hz Lamp Flux:13.1996x1 lm		
NAME: SF15-24V-5050-56-SPI4-RGBW(2700)-B	TYPE:硅胶	WEIGHT:
SPEC.:	DIM.: 21mm*11.5mm	SERIAL No.:2021122908
MFR.: OLYMPIA	SUR.:1*0.0115	Shielding Angle:

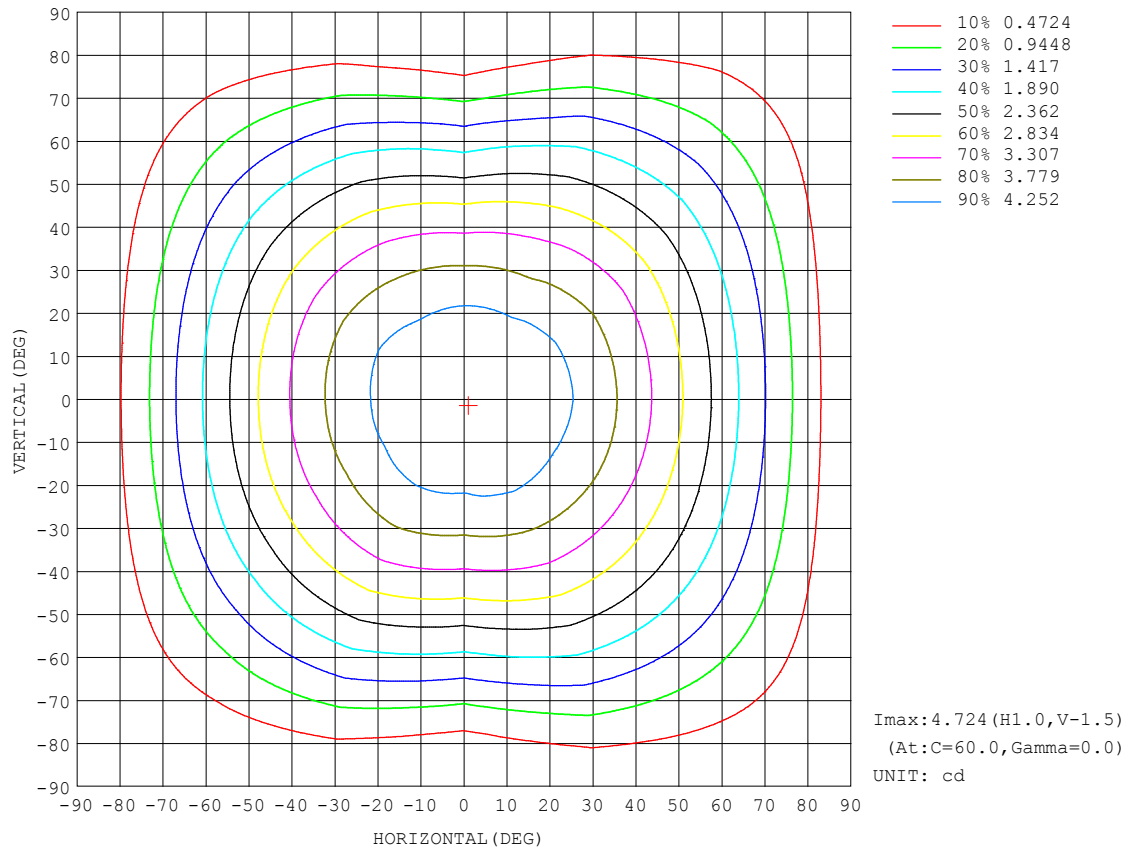
REFLECTANCE										
Ceiling	0.8	0.8	0.8	0.7	0.7	0.7	0.5	0.5	0.5	0
Walls	0.7	0.5	0.3	0.7	0.5	0.3	0.7	0.5	0.3	0
Working plane	0.2	0.2	0.2	0.2	0.2	0.2	0.2	0.2	0.2	0
ROOM INDEX	UTILIZATION FACTORS (PERCENT) $k(RI) \times RCR = 5$									
$k = 0.60$	58	46	39	57	46	39	56	45	39	32
0.80	68	56	49	67	56	49	65	55	48	41
1.00	76	65	58	75	64	57	73	66	57	50
1.25	83	73	66	82	72	65	79	71	64	57
1.50	88	78	71	87	77	71	83	76	70	62
2.00	95	86	80	93	85	79	90	83	78	70
2.50	99	91	85	97	90	84	93	87	82	74
3.00	102	95	90	100	94	89	96	91	87	78
4.00	106	101	96	104	99	95	100	95	92	83
5.00	109	104	100	106	102	98	102	98	95	86
ROOM INDEX	UF(total)									Direct
According to DIN EN 13032-2 2004			Suspended					SHRNOM = 1.25		

C Range: 0 - 360DEG
C Interval: 30.0DEG
Test Speed: HIGH
Temperature:25.3DEG
Operators:LPC
Test Date:2021-12-29

γ Range: 0 - 120DEG
 γ Interval: 1.0DEG
Test System:EVERFINE GO-2000B_V1 SYSTEM V2.0.362
Humidity:65.0%
Test Distance:9.200m [K=1.0000]
Remarks:

ISOCANDELA DIAGRAM

Test:U:24.00V I:0.1931A P:4.634W PF:1.000 Freq:50.00Hz Lamp Flux:13.1996x1 lm		
NAME: SF15-24V-5050-56-SPI4-RGBW(2700)-B	TYPE: 硅胶	WEIGHT:
SPEC.:	DIM.: 21mm*11.5mm	SERIAL No.:2021122908
MFR.: OLYMPIA	SUR.:1*0.0115	Shielding Angle:

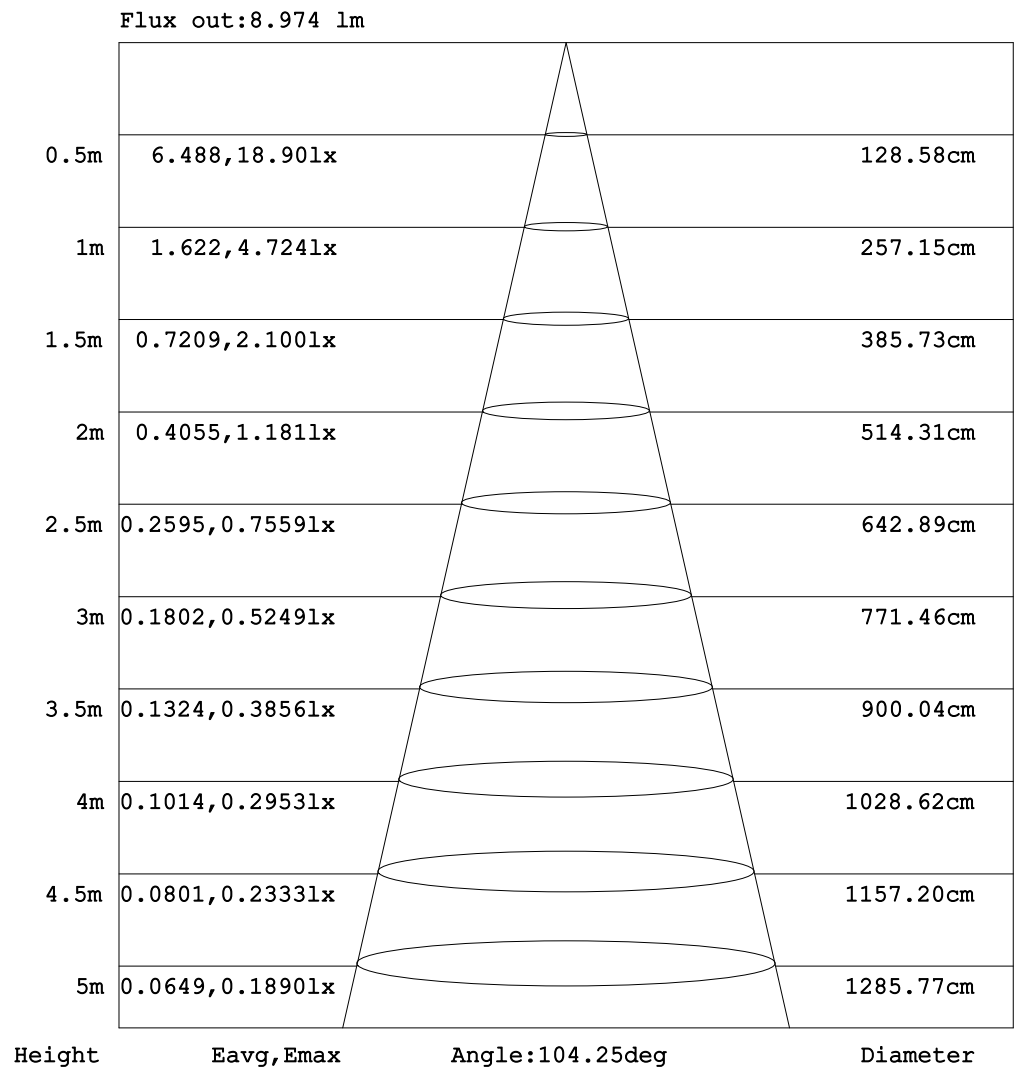


C Range: 0 - 360DEG
C Interval: 30.0DEG
Test Speed: HIGH
Temperature:25.3DEG
Operators:LPC
Test Date:2021-12-29

γ Range: 0 - 120DEG
 γ Interval: 1.0DEG
Test System:EVERFINE GO-2000B_V1 SYSTEM V2.0.362
Humidity:65.0%
Test Distance:9.200m [K=1.0000]
Remarks:

AAI Figure

Test:U:24.00V I:0.1931A P:4.634W PF:1.000 Freq:50.00Hz Lamp Flux:13.1996x1 lm		
NAME: SF15-24V-5050-56-SPI4-RGBW(2700)-B	TYPE:硅胶	WEIGHT:
SPEC.:	DIM.: 21mm*11.5mm	SERIAL No.:2021122908
MFR.: OLYMPIA	SUR.:1*0.0115	Shielding Angle:



Note: The Curves indicate the illuminated area and the average illumination when the luminaire is at different distance.

C Range: 0 - 360DEG
C Interval: 30.0DEG
Test Speed: HIGH
Temperature:25.3DEG
Operators:LPC
Test Date:2021-12-29

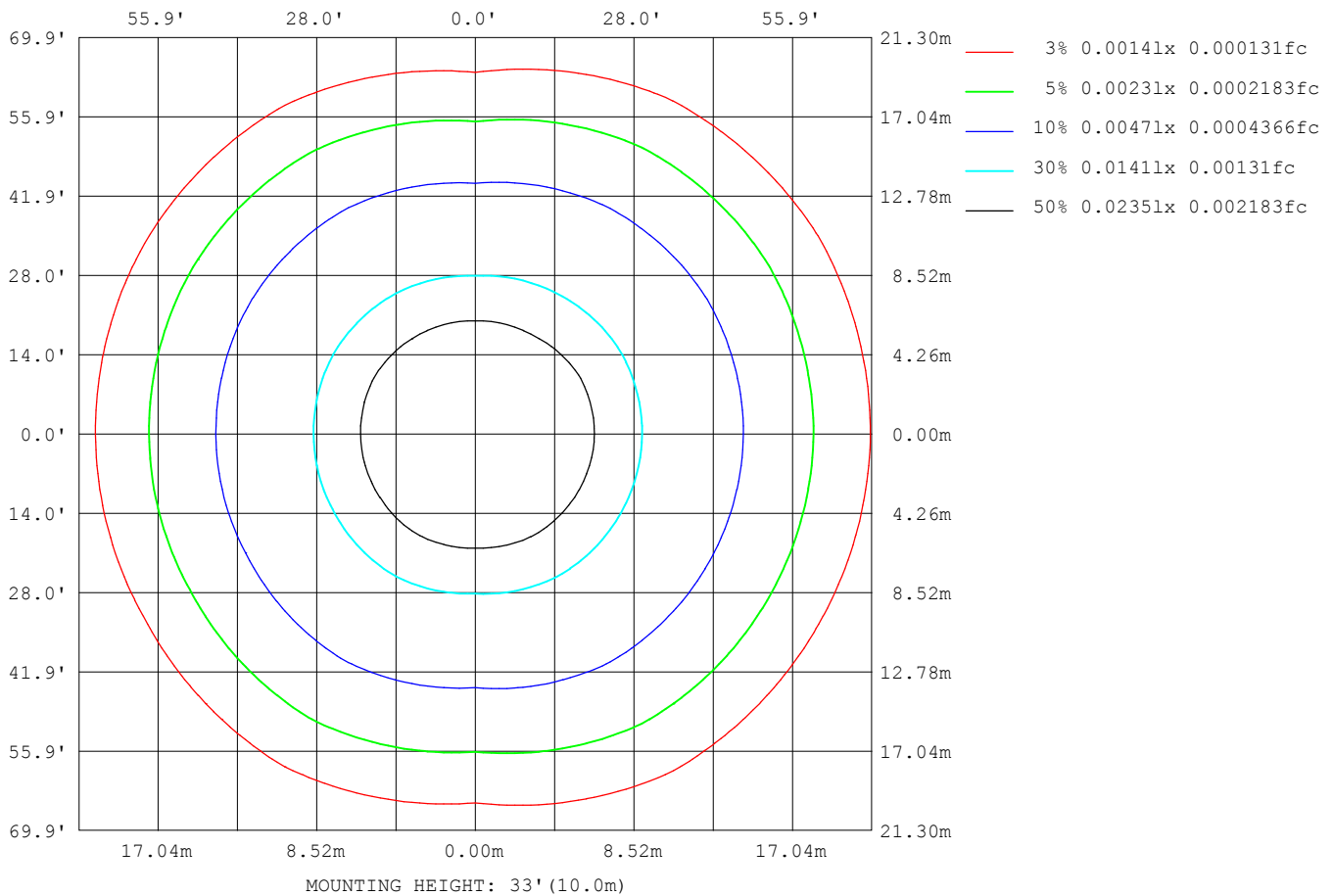
```

γ Range: 0 - 120DEG
γ Interval: 1.0DEG
Test System:EVERFINE GO-2000B_V1 SYSTEM V2.0.362
Humidity:65.0%
Test Distance:9.200m [K=1.0000]
Remarks:

```

ISOLUX DIAGRAM

Test:U:24.00V I:0.1931A P:4.634W PF:1.000 Freq:50.00Hz Lamp Flux:13.1996x1 lm		
NAME: SF15-24V-5050-56-SPI4-RGBW(2700)-B	TYPE: 硅胶	WEIGHT:
SPEC.:	DIM.: 21mm*11.5mm	SERIAL No.:2021122908
MFR.: OLYMPIA	SUR.:1*0.0115	Shielding Angle:



C Range: 0 - 360DEG
C Interval: 30.0DEG
Test Speed: HIGH
Temperature:25.3DEG
Operators:LPC
Test Date:2021-12-29

γ Range: 0 - 120DEG
 γ Interval: 1.0DEG
Test System:EVERFINE GO-2000B_V1 SYSTEM V2.0.362
Humidity:65.0%
Test Distance:9.200m [K=1.0000]
Remarks:

LED Avg.L Report

Test:U:24.00V I:0.1931A P:4.634W PF:1.000 Freq:50.00Hz Lamp Flux:13.1996x1 lm		
NAME: SF15-24V-5050-56-SPI4-RGBW(2700)-B	TYPE:硅胶	WEIGHT:
SPEC.:	DIM.: 21mm*11.5mm	SERIAL No.:2021122908
MFR.: OLYMPIA	SUR.:1*0.0115	Shielding Angle:

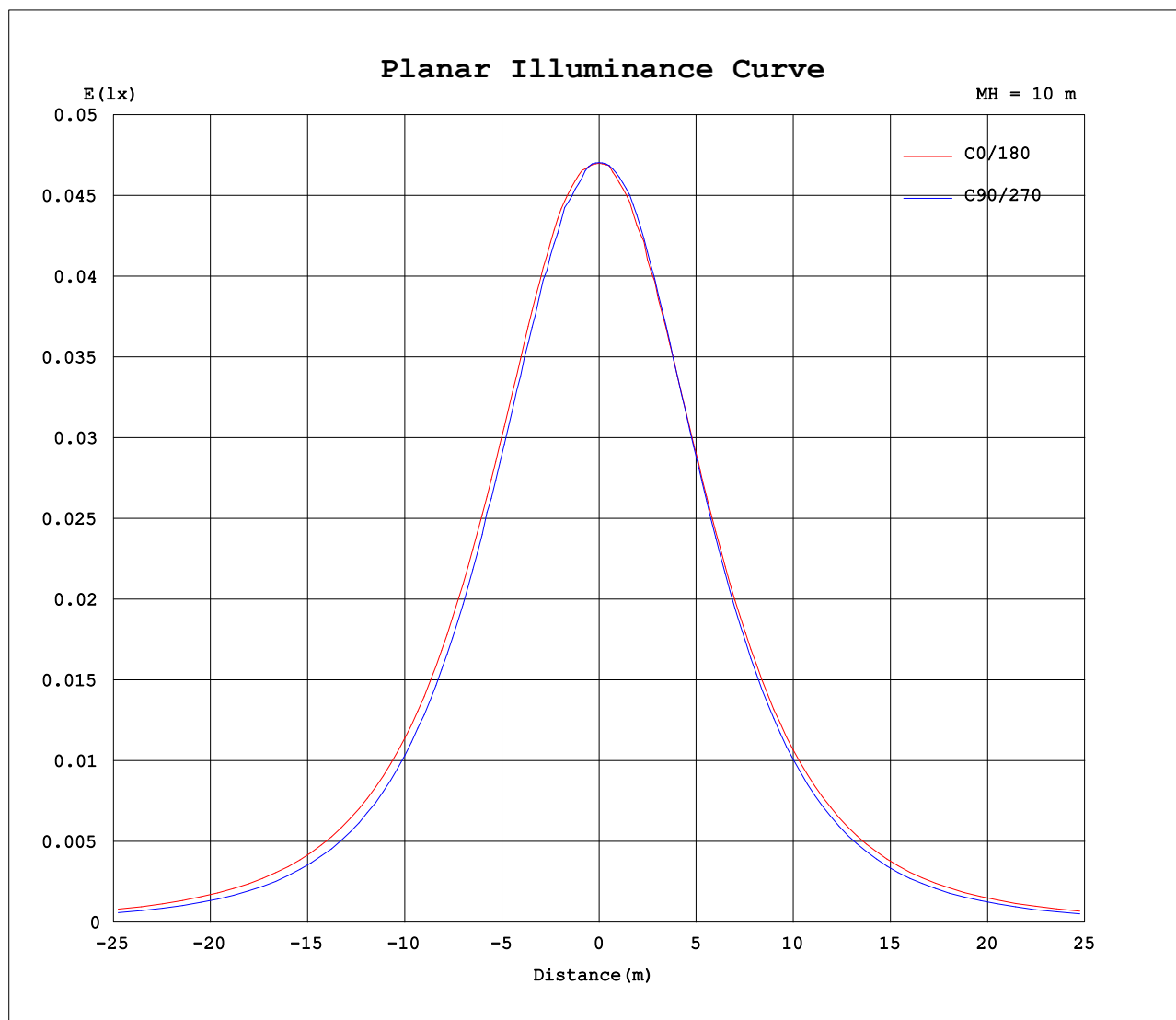
AvgL	cd/m2
L_0~180(65)av	345
L_0~180(75)av	312
L_0~180(85)av	273
L_90~270(65)av	276
L_90~270(75)av	187
L_90~270(85)av	3
L_45(65)av	347
L_45(75)av	312
L_45(85)av	249

Standard: GB/T 29293-2012

C Range: 0 - 360DEG
C Interval: 30.0DEG
Test Speed: HIGH
Temperature:25.3DEG
Operators:LPC
Test Date:2021-12-29

γ Range: 0 - 120DEG
γ Interval: 1.0DEG
Test System:EVERFINE GO-2000B_V1 SYSTEM V2.0.362
Humidity:65.0%
Test Distance:9.200m [K=1.0000]
Remarks:

Planar Illuminance Curve



C Range: 0 - 360DEG
C Interval: 30.0DEG
Test Speed: HIGH
Temperature: 25.3DEG
Operators: LPC
Test Date: 2021-12-29

γ Range: 0 - 120DEG
 γ Interval: 1.0DEG
Test System: EVERFINE GO-2000B_V1 SYSTEM V2.0.362
Humidity: 65.0%
Test Distance: 9.200m [K=1.0000]
Remarks:

LUMINOUS DISTRIBUTION INTENSITY DATA

Test:U:24.00V I:0.1931A P:4.634W PF:1.000 Freq:50.00Hz Lamp Flux:13.1996x1 lm		
NAME: SF15-24V-5050-56-SPI4-RGBW(2700)-B	TYPE: 硅胶	WEIGHT:
SPEC.:	DIM.: 21mm*11.5mm	SERIAL No.:2021122908
MFR.: OLYMPIA	SUR.:1*0.0115	Shielding Angle:

Table--1

UNIT: cd

C (DEG) γ (DEG)	0	30	60	90	120	150	180	210	240	270	300	330						
0	4.70	4.72	4.72	4.70	4.71	4.70	4.70	4.72	4.72	4.70	4.71	4.70						
5	4.71	4.71	4.72	4.66	4.70	4.66	4.67	4.71	4.72	4.69	4.69	4.72						
10	4.68	4.63	4.67	4.63	4.64	4.57	4.59	4.64	4.60	4.65	4.62	4.69						
15	4.58	4.55	4.57	4.48	4.52	4.46	4.47	4.52	4.46	4.51	4.49	4.58						
20	4.45	4.40	4.41	4.32	4.36	4.30	4.31	4.36	4.31	4.33	4.33	4.43						
25	4.27	4.22	4.22	4.12	4.16	4.11	4.12	4.16	4.09	4.10	4.13	4.25						
30	4.06	4.01	3.99	3.91	3.95	3.89	3.89	3.94	3.88	3.84	3.88	4.04						
35	3.81	3.78	3.72	3.58	3.68	3.62	3.63	3.67	3.61	3.54	3.61	3.80						
40	3.53	3.49	3.44	3.27	3.39	3.33	3.34	3.38	3.33	3.20	3.35	3.52						
45	3.23	3.17	3.14	2.92	3.08	3.01	3.02	3.07	3.01	2.86	3.07	3.22						
50	2.90	2.84	2.81	2.56	2.73	2.67	2.69	2.72	2.69	2.48	2.75	2.90						
55	2.55	2.51	2.46	2.19	2.38	2.31	2.32	2.36	2.32	2.09	2.40	2.55						
60	2.18	2.14	2.11	1.79	2.01	1.93	1.95	1.98	1.95	1.68	2.04	2.19						
65	1.80	1.76	1.74	1.40	1.62	1.56	1.56	1.59	1.57	1.28	1.68	1.82						
70	1.43	1.40	1.37	1.00	1.25	1.17	1.18	1.21	1.19	0.87	1.31	1.45						
75	1.06	1.01	0.99	0.62	0.87	0.78	0.80	0.83	0.79	0.49	0.93	1.05						
80	0.68	0.64	0.63	0.28	0.50	0.44	0.46	0.48	0.44	0.16	0.57	0.68						
85	0.35	0.30	0.30	0.01	0.21	0.19	0.20	0.21	0.13	0.00	0.22	0.35						
90	0.15	0.09	0.08	0.01	0.06	0.05	0.02	0.06	0.00	0.00	0.06	0.13						
95	0.04	0.00	0.03	0.01	0.04	0.02	0.00	0.01	0.00	0.00	0.00	0.03						
100	0.01	0.00	0.02	0.01	0.03	0.02	0.00	0.00	0.00	0.00	0.00	0.00						
105	0.00	0.00	0.02	0.01	0.02	0.02	0.00	0.00	0.00	0.00	0.00	0.00						
110	0.00	0.00	0.02	0.01	0.02	0.02	0.00	0.00	0.00	0.00	0.00	0.00						
115	0.00	0.00	0.02	0.01	0.02	0.02	0.00	0.00	0.00	0.00	0.00	0.00						
120	0.00	0.00	0.01	0.01	0.04	0.02	0.00	0.00	0.00	0.00	0.00	0.00						
125	0.00	0.00	0.00	0.00	0.00	0.00	0.00	0.00	0.00	0.00	0.00	0.00						
130	0.00	0.00	0.00	0.00	0.00	0.00	0.00	0.00	0.00	0.00	0.00	0.00						
135	0.00	0.00	0.00	0.00	0.00	0.00	0.00	0.00	0.00	0.00	0.00	0.00						
140	0.00	0.00	0.00	0.00	0.00	0.00	0.00	0.00	0.00	0.00	0.00	0.00						
145	0.00	0.00	0.00	0.00	0.00	0.00	0.00	0.00	0.00	0.00	0.00	0.00						
150	0.00	0.00	0.00	0.00	0.00	0.00	0.00	0.00	0.00	0.00	0.00	0.00						
155	0.00	0.00	0.00	0.00	0.00	0.00	0.00	0.00	0.00	0.00	0.00	0.00						
160	0.00	0.00	0.00	0.00	0.00	0.00	0.00	0.00	0.00	0.00	0.00	0.00						
165	0.00	0.00	0.00	0.00	0.00	0.00	0.00	0.00	0.00	0.00	0.00	0.00						
170	0.00	0.00	0.00	0.00	0.00	0.00	0.00	0.00	0.00	0.00	0.00	0.00						
175	0.00	0.00	0.00	0.00	0.00	0.00	0.00	0.00	0.00	0.00	0.00	0.00						
180	0.00	0.00	0.00	0.00	0.00	0.00	0.00	0.00	0.00	0.00	0.00	0.00						

C Range: 0 - 360DEG
C Interval: 30.0DEG
Test Speed: HIGH
Temperature:25.3DEG
Operators:LPC
Test Date:2021-12-29

γ Range: 0 - 120DEG
γ Interval: 1.0DEG
Test System:EVERFINE GO-2000B_V1 SYSTEM V2.0.362
Humidity:65.0%
Test Distance:9.200m [K=1.0000]
Remarks:

Photometric Data Table [cd]

G/C	0.0	30.0	60.0	90.0	120.0	150.0	180.0	210.0	240.0	270.0
0.0	4.699	4.719	4.724	4.704	4.709	4.699	4.699	4.719	4.724	4.704
3.0	4.699	4.714	4.724	4.699	4.709	4.679	4.704	4.719	4.724	4.704
6.0	4.702	4.714	4.712	4.649	4.704	4.639	4.654	4.704	4.664	4.689
9.0	4.682	4.639	4.684	4.629	4.654	4.613	4.628	4.659	4.618	4.674
12.0	4.654	4.603	4.644	4.558	4.594	4.533	4.553	4.594	4.563	4.604
15.0	4.584	4.553	4.574	4.483	4.523	4.463	4.473	4.523	4.463	4.513
18.0	4.508	4.468	4.483	4.387	4.428	4.367	4.382	4.423	4.377	4.408
21.0	4.413	4.372	4.378	4.297	4.327	4.262	4.286	4.317	4.251	4.277
24.0	4.307	4.256	4.262	4.166	4.207	4.146	4.161	4.202	4.136	4.157
27.0	4.187	4.141	4.132	4.025	4.081	4.025	4.040	4.076	4.010	4.006
30.0	4.056	4.005	3.986	3.909	3.946	3.894	3.894	3.941	3.884	3.840
33.0	3.916	3.864	3.830	3.703	3.795	3.729	3.739	3.780	3.719	3.664
36.0	3.760	3.758	3.664	3.517	3.629	3.568	3.573	3.619	3.563	3.473
39.0	3.589	3.538	3.494	3.336	3.448	3.402	3.407	3.438	3.382	3.277
42.0	3.408	3.357	3.318	3.131	3.267	3.206	3.211	3.252	3.201	3.076
45.0	3.227	3.171	3.137	2.924	3.076	3.010	3.020	3.066	3.010	2.855
48.0	3.031	2.990	2.941	2.708	2.870	2.809	2.824	2.850	2.809	2.629
51.0	2.830	2.779	2.745	2.477	2.664	2.608	2.613	2.654	2.603	2.398
54.0	2.619	2.568	2.534	2.251	2.453	2.382	2.397	2.428	2.397	2.167
57.0	2.403	2.366	2.328	2.040	2.232	2.160	2.175	2.202	2.180	1.916
60.0	2.182	2.135	2.106	1.793	2.006	1.934	1.954	1.981	1.949	1.684
63.0	1.956	1.914	1.885	1.557	1.780	1.698	1.718	1.750	1.718	1.448
66.0	1.730	1.688	1.664	1.321	1.564	1.482	1.497	1.523	1.492	1.192
69.0	1.509	1.472	1.443	1.085	1.328	1.241	1.261	1.297	1.261	0.9606
72.0	1.282	1.241	1.222	0.8486	1.092	1.009	1.029	1.066	1.024	0.7195
75.0	1.056	1.010	0.9909	0.6225	0.8653	0.7834	0.7984	0.8300	0.7933	0.4882
78.0	0.8250	0.7834	0.7697	0.4016	0.6390	0.5674	0.5873	0.6088	0.5674	0.2771
81.0	0.6088	0.5623	0.5585	0.2253	0.4379	0.3764	0.3964	0.4177	0.3561	0.1110
84.0	0.4128	0.3612	0.3526	0.0299	0.2570	0.2208	0.2358	0.2569	0.1952	0.0002
87.0	0.2568	0.1957	0.1815	0.0050	0.1311	0.1152	0.1102	0.1410	0.0449	0
90.0	0.1461	0.0901	0.0807	0.0050	0.0605	0.0451	0.0249	0.0605	0	0
93.0	0.0756	0.0199	0.0352	0.0050	0.0452	0.0151	0	0.0201	0	0
96.0	0.0303	0	0.0202	0.0050	0.0302	0.0151	0	0.0050	0	0
99.0	0.0051	0	0.0201	0.0051	0.0251	0.0151	0	0.0050	0	0
102.0	0	0	0.0201	0.0101	0.0251	0.0151	0	0	0	0
105.0	0	0	0.0151	0.0101	0.0151	0.0151	0	0	0	0
108.0	0	0	0.0151	0.0101	0.0151	0.0151	0	0	0	0
111.0	0	0	0.0151	0.0101	0.0151	0.0151	0	0	0	0
114.0	0	0	0.0151	0.0101	0.0151	0.0151	0	0	0	0
117.0	0	0	0.0151	0.0101	0.0151	0.0201	0	0	0	0
120.0	0	0	0.0050	0.0101	0.0352	0.0201	0	0	0	0
G/C	300.0	330.0								
0.0	4.709	4.699								
3.0	4.704	4.704								
6.0	4.674	4.719								
9.0	4.634	4.704								
12.0	4.568	4.649								
15.0	4.493	4.584								
18.0	4.397	4.498								
21.0	4.306	4.393								
24.0	4.161	4.287								
27.0	4.020	4.172								
30.0	3.884	4.041								
33.0	3.723	3.905								
36.0	3.573	3.750								
39.0	3.407	3.579								
42.0	3.256	3.408								
45.0	3.070	3.222								
48.0	2.874	3.031								
51.0	2.678	2.830								
54.0	2.472	2.629								
57.0	2.266	2.403								
60.0	2.045	2.192								
63.0	1.828	1.966								
66.0	1.602	1.735								
69.0	1.401	1.528								
72.0	1.160	1.292								
75.0	0.9291	1.051								
78.0	0.7079	0.8299								
81.0	0.4918	0.6137								
84.0	0.2857	0.4078								
87.0	0.1251	0.2468								
90.0	0.0598	0.1310								

C Range: 0 - 360DEG
C Interval: 30.0DEG
Test Speed: HIGH
Temperature: 25.3DEG
Operators: LPC
Test Date: 2021-12-29

```

γ Range: 0 - 120DEG
γ Interval: 1.0DEG
Test System:EVERFINE GO-2000B_V1 SYSTEM V2.0.362
Humidity:65.0%
Test Distance:9.200m [K=1.0000]
Remarks:

```

93.0	0	0.0555
96.0	0	0.0152
99.0	0	0
102.0	0	0
105.0	0	0
108.0	0	0
111.0	0	0
114.0	0	0
117.0	0	0
120.0	0	0

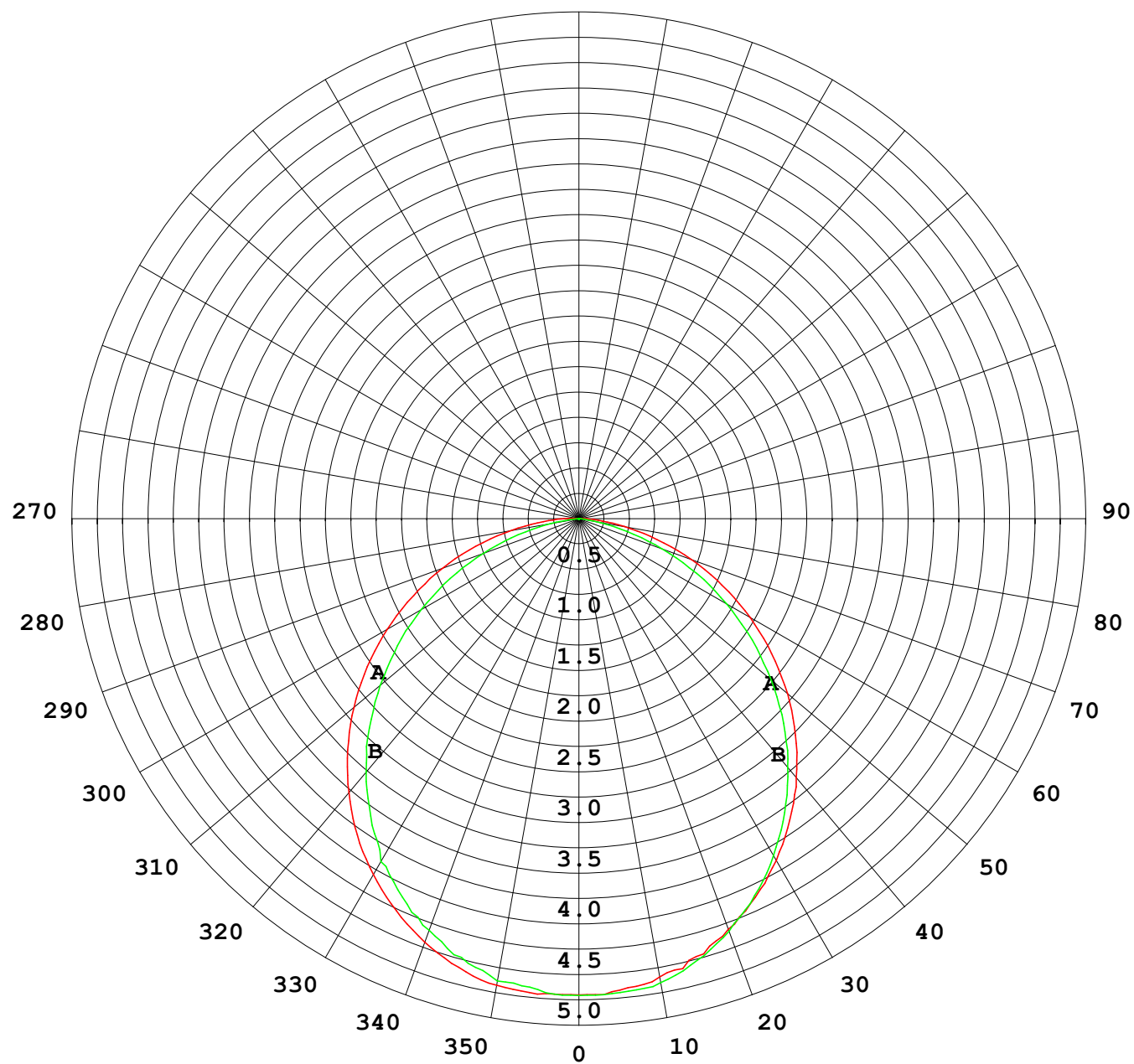
C Range: 0 - 360DEG
C Interval: 30.0DEG
Test Speed: HIGH
Temperature:25.3DEG
Operators:LPC
Test Date:2021-12-29

```

✓ Range: 0 - 120DEG
✓ Interval: 1.0DEG
Test System:EVERFINE GO-2000B_V1 SYSTEM V2.0.362
Humidity:65.0%
Test Distance:9.200m [K=1.0000]
Remarks:

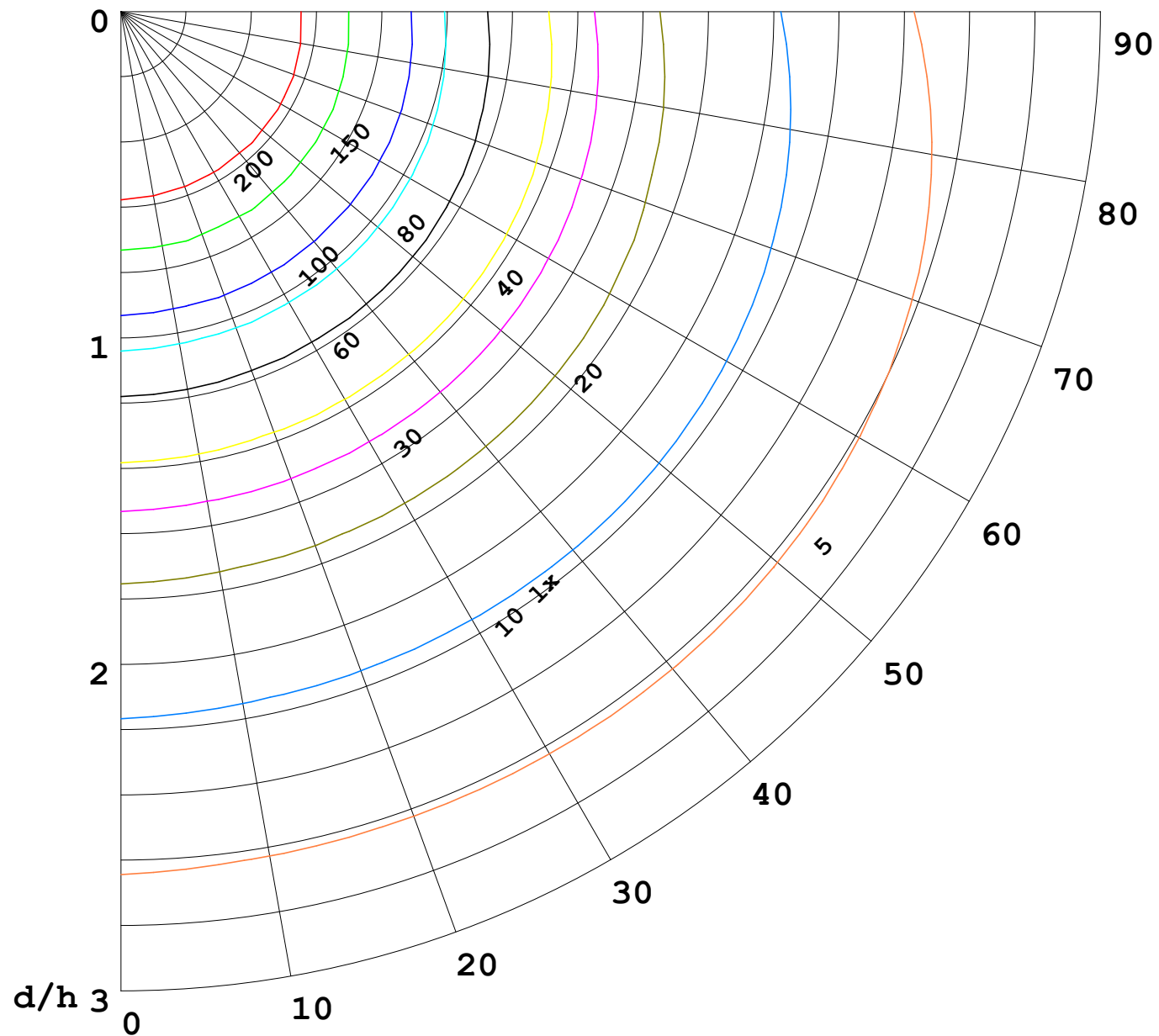
```

I (cd)



1000 lm

$\kappa = 1$



F = 5000 lm
 K = 0.7
 Hcc = 0.0 m
 Hfc = 0.0 m
 Eave = 100 lx

	Pcc	Pw	Pfc
—	70	50	30
—	50	30	20

