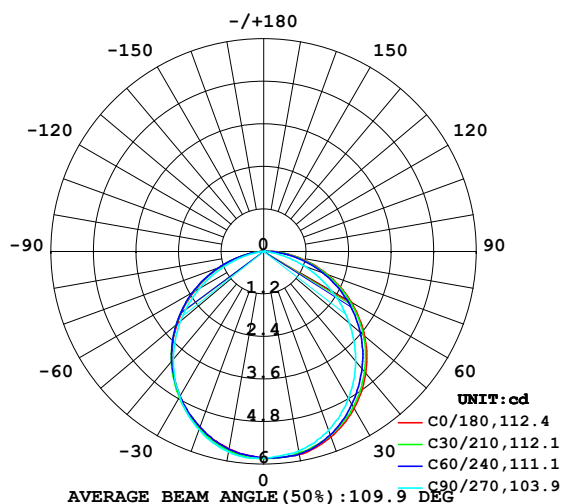


LUMINAIRE PHOTOMETRIC TEST REPORT

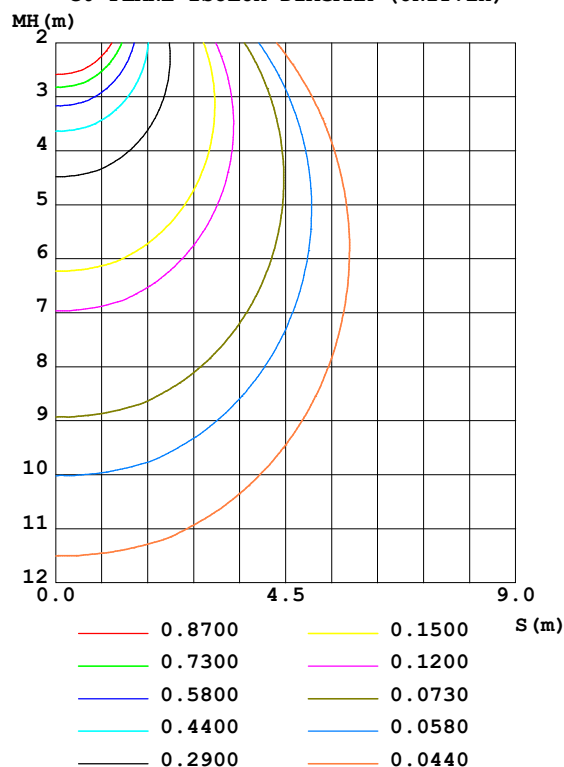
Test:U:24.00V I:0.1924A P:4.618W PF:1.000 Freq:50.00Hz Lamp Flux:16.4275x1 lm		
NAME: SF15-24V-5050-56-SPI4-RGBW(3000)-B	TYPE: 硅胶	WEIGHT:
SPEC.:	DIM.: 21mm*11.5mm	SERIAL No.:2021122913
MFR.: OLYMPIA	SUR.:1*0.0115	Shielding Angle:

DATA OF LAMP		PHOTOMETRIC DATA				Eff: 3.56 lm/W
MODEL	5050	I _{max} (cd)	5.845	S/MH(C0/180)	1.21	
NOMINAL POWER(W)	3.75	LOR(%)	100.0	S/MH(C90/270)	1.21	
RATED VOLTAGE(V)	24	TOTAL FLUX(lm)	16.428	η UP,DN(C0-180)	0.4,50.7	
NOMINAL FLUX(lm)	16.4275	CIE CLASS	DIRECT	η UP,DN(C180-360)	0.1,48.9	
LAMPS INSIDE	1	η up(%)	0.5	CIBSE SHR NOM	1.25	
TEST VOLTAGE(V)	24	η down(%)	99.5	CIBSE SHR MAX	1.35	

LUMINOUS INTENSITY DISTRIBUTION DIAGRAM



C0 PLANE ISOLUX DIAGRAM (UNIT:lx)

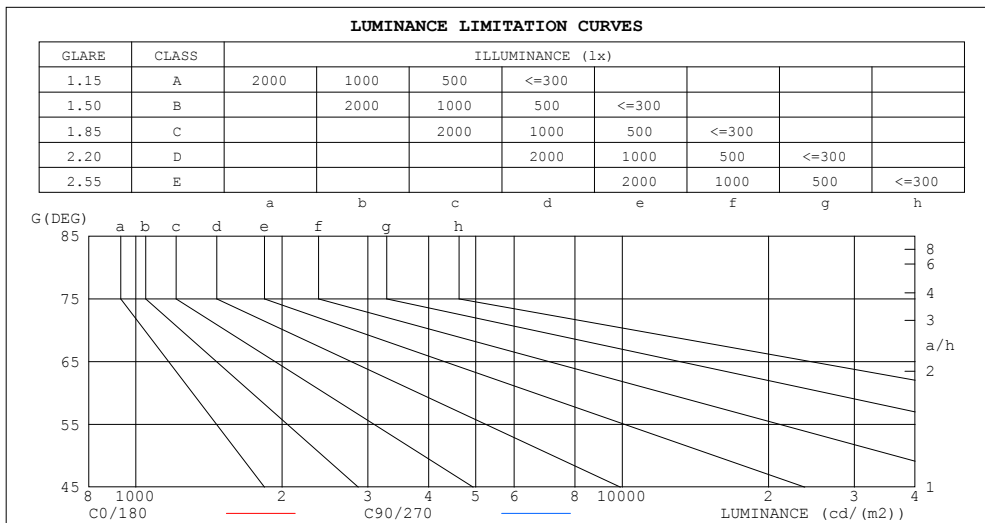


C Range: 0 - 360DEG
C Interval: 30.0DEG
Test Speed: HIGH
Temperature: 25.3DEG
Operators: LPC
Test Date: 2021-12-29

γ Range: 0 - 120DEG
γ Interval: 1.0DEG
Test System: EVERFINE GO-2000B_V1 SYSTEM V2.0.362
Humidity: 65.0%
Test Distance: 9.200m [K=1.0000]
Remarks:

LUMINANCE LIMITATION CURVES

Test:U:24.00V I:0.1924A P:4.618W PF:1.000 Freq:50.00Hz Lamp Flux:16.4275x1 lm		
NAME: SF15-24V-5050-56-SPI4-RGBW(3000)-B	TYPE: 硅胶	WEIGHT:
SPEC.:	DIM.: 21mm*11.5mm	SERIAL No.:2021122913
MFR.: OLYMPIA	SUR.:1*0.0115	Shielding Angle:



LUMINANCE cd/(m2)		
G (DEG)	C0/180	C90/270
85	562	15
80	494	171
75	490	255
70	487	314
65	492	353
60	497	384
55	499	408
50	503	428
45	506	444

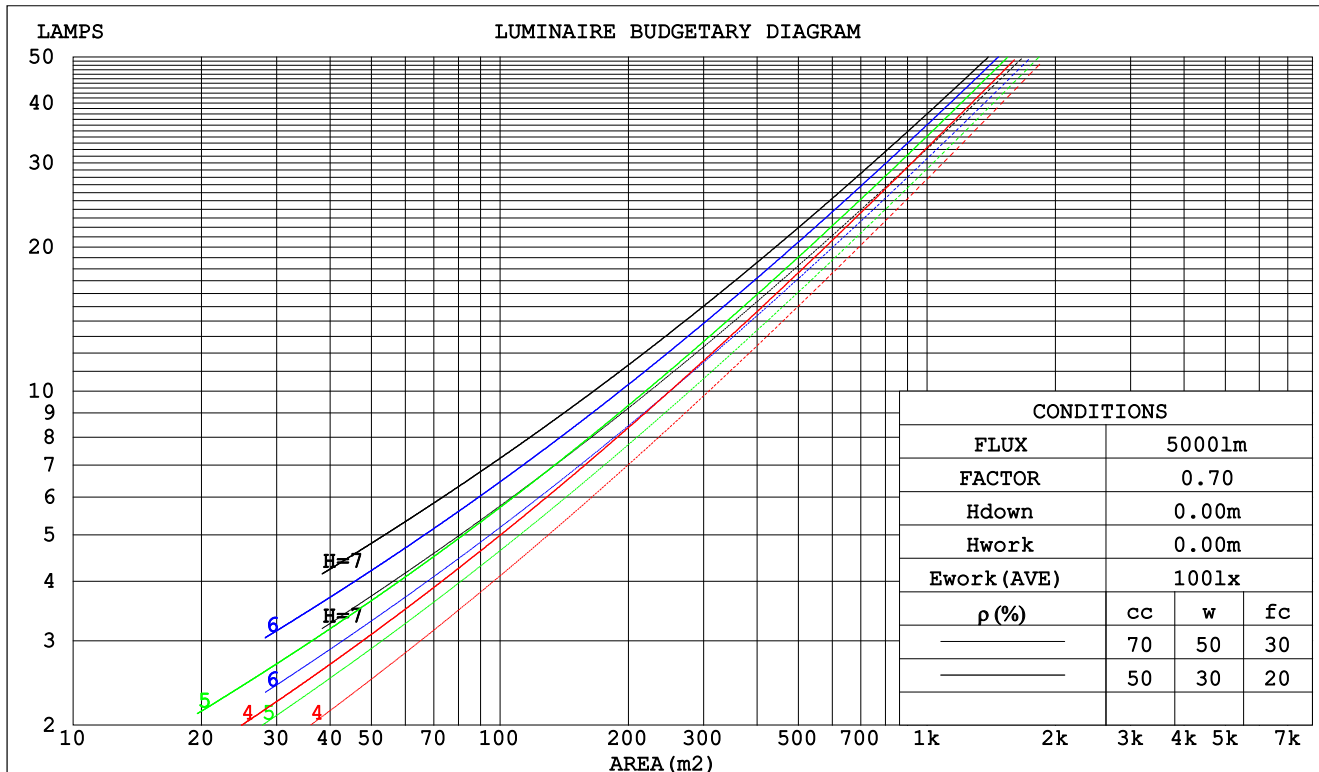
C Range: 0 - 360DEG
C Interval: 30.0DEG
Test Speed: HIGH
Temperature:25.3DEG
Operators:LPC
Test Date:2021-12-29

γ Range: 0 - 120DEG
 γ Interval: 1.0DEG
Test System:EVERFINE GO-2000B_V1 SYSTEM V2.0.362
Humidity:65.0%
Test Distance:9.200m [K=1.0000]
Remarks:

CU AND LUMINAIRE BUDGETARY ESTIMATE DIAGRAM

Test:U:24.00V I:0.1924A P:4.618W PF:1.000 Freq:50.00Hz Lamp Flux:16.4275x1 lm		
NAME: SF15-24V-5050-56-SPI4-RGBW(3000)-B	TYPE: 硅胶	WEIGHT:
SPEC.:	DIM.: 21mm*11.5mm	SERIAL No.:2021122913
MFR.: OLYMPIA	SUR.:1*0.0115	Shielding Angle:

pcc	80%			70%			50%			30%			10%			0
pw	50%	30%	10%	50%	30%	10%	50%	30%	10%	50%	30%	10%	50%	30%	10%	0
pfc	20%			20%			20%			20%			20%			0
RCR	Coefficients of Utilization(CU)															
0.0	1.19	1.19	1.19	1.16	1.16	1.16	1.11	1.11	1.11	1.06	1.06	1.06	1.02	1.02	1.02	.00
1.0	1.04	.99	.96	1.01	.97	.94	.97	.94	.91	.93	.90	.88	.89	.87	.85	.83
2.0	.90	.84	.78	.88	.82	.77	.85	.79	.75	.81	.77	.73	.78	.75	.71	.69
3.0	.79	.71	.65	.78	.70	.64	.75	.68	.63	.72	.66	.62	.69	.65	.60	.58
4.0	.70	.61	.55	.69	.61	.54	.66	.59	.53	.64	.58	.53	.62	.56	.52	.50
5.0	.63	.54	.47	.62	.53	.47	.59	.52	.46	.57	.51	.46	.56	.50	.45	.43
6.0	.57	.48	.41	.56	.47	.41	.54	.46	.40	.52	.45	.40	.50	.44	.40	.38
7.0	.51	.42	.36	.50	.42	.36	.49	.41	.36	.47	.41	.36	.46	.40	.35	.33
8.0	.47	.38	.32	.46	.38	.32	.45	.37	.32	.43	.37	.32	.42	.36	.32	.30
9.0	.43	.35	.29	.42	.34	.29	.41	.34	.29	.40	.33	.29	.39	.33	.28	.27
10.0	.40	.32	.26	.39	.31	.26	.38	.31	.26	.37	.31	.26	.36	.30	.26	.24



C Range: 0 - 360DEG
 C Interval: 30.0DEG
 Test Speed: HIGH
 Temperature:25.3DEG
 Operators:LPC
 Test Date:2021-12-29

γ Range: 0 - 120DEG
 γ Interval: 1.0DEG
 Test System:EVERFINE GO-2000B_V1 SYSTEM V2.0.362
 Humidity:65.0%
 Test Distance:9.200m [K=1.0000]
 Remarks:

WEC AND CCEC

Test:U:24.00V I:0.1924A P:4.618W PF:1.000 Freq:50.00Hz Lamp Flux:16.4275x1 lm		
NAME: SF15-24V-5050-56-SPI4-RGBW(3000)-B	TYPE: 硅胶	WEIGHT:
SPEC.:	DIM.: 21mm*11.5mm	SERIAL No.:2021122913
MFR.: OLYMPIA	SUR.:1*0.0115	Shielding Angle:

pcc	80%			70%			50%			30%			10%			0	
pw	50%	30%	10%	50%	30%	10%	50%	30%	10%	50%	30%	10%	50%	30%	10%	0	
pfc	20%			20%			20%			20%			20%			0	
RCR	RCR:Room Cavity Ratio						Wall Exitance Coefficients(WEC)										
0.0																	
1.0	.310	.176	.056	.303	.173	.055	.289	.166	.053	.277	.160	.051	.266	.154	.050		
2.0	.291	.160	.049	.285	.157	.048	.273	.152	.047	.262	.147	.046	.252	.142	.045		
3.0	.269	.143	.043	.264	.141	.043	.253	.137	.042	.243	.133	.041	.234	.130	.040		
4.0	.249	.129	.038	.244	.127	.038	.234	.124	.037	.225	.121	.037	.217	.118	.036		
5.0	.230	.117	.034	.225	.116	.034	.217	.113	.033	.209	.110	.033	.202	.108	.032		
6.0	.213	.107	.031	.209	.106	.030	.202	.103	.030	.195	.101	.030	.188	.099	.029		
7.0	.198	.098	.028	.195	.097	.028	.188	.095	.027	.182	.093	.027	.176	.091	.027		
8.0	.185	.091	.025	.182	.090	.025	.176	.088	.025	.171	.086	.025	.165	.085	.025		
9.0	.174	.084	.023	.171	.083	.023	.165	.082	.023	.160	.080	.023	.156	.079	.023		
10.0	.163	.078	.022	.161	.078	.022	.156	.076	.022	.151	.075	.021	.147	.074	.021		

pcc	80%			70%			50%			30%			10%			0
pw	50%	30%	10%	50%	30%	10%	50%	30%	10%	50%	30%	10%	50%	30%	10%	0
pfc	20%			20%			20%			20%			20%			0
RCR	RCR:Room Cavity Ratio						Ceiling Cavity Exitance Coefficients(CCEC)									
0.0	.194	.194	.194	.166	.166	.166	.113	.113	.113	.065	.065	.065	.021	.021	.021	
1.0	.184	.160	.138	.157	.137	.119	.108	.094	.082	.062	.055	.048	.020	.018	.015	
2.0	.176	.135	.102	.151	.117	.088	.103	.081	.061	.059	.047	.036	.019	.015	.012	
3.0	.168	.118	.078	.144	.102	.068	.099	.071	.047	.057	.041	.028	.018	.013	.009	
4.0	.160	.105	.062	.138	.090	.054	.095	.063	.038	.055	.037	.022	.018	.012	.007	
5.0	.153	.094	.051	.131	.081	.044	.090	.057	.031	.052	.033	.019	.017	.011	.006	
6.0	.146	.086	.043	.125	.074	.037	.086	.052	.026	.050	.031	.016	.016	.010	.005	
7.0	.139	.079	.037	.119	.068	.032	.083	.048	.023	.048	.028	.014	.015	.009	.004	
8.0	.132	.073	.032	.114	.063	.028	.079	.045	.020	.046	.026	.012	.015	.009	.004	
9.0	.126	.068	.029	.109	.059	.025	.075	.042	.018	.044	.025	.011	.014	.008	.004	
10.0	.121	.064	.026	.104	.055	.023	.072	.039	.016	.042	.023	.010	.014	.008	.003	

C Range: 0 - 360DEG
 C Interval: 30.0DEG
 Test Speed: HIGH
 Temperature:25.3DEG
 Operators:LPC
 Test Date:2021-12-29

γ Range: 0 - 120DEG
 γ Interval: 1.0DEG
 Test System:EVERFINE GO-2000B_V1 SYSTEM V2.0.362
 Humidity:65.0%
 Test Distance:9.200m [K=1.0000]
 Remarks:

UGR(Unified Glare Rating) Table

Test:U:24.00V I:0.1924A P:4.618W PF:1.000 Freq:50.00Hz Lamp Flux:16.4275x1 lm											
NAME: SF15-24V-5050-56-SPI4-RGBW(3000)-B					TYPE:硅胶			WEIGHT:			
SPEC.:					DIM.: 21mm*11.5mm			SERIAL No.:2021122913			
MFR.: OLYMPIA					SUR.:1*0.0115			Shielding Angle:			
ceiling/cavity	0.7	0.7	0.5	0.5	0.3	0.7	0.7	0.5	0.5	0.3	
walls	0.5	0.3	0.5	0.3	0.3	0.5	0.3	0.5	0.3	0.3	
working plane	0.2	0.2	0.2	0.2	0.2	0.2	0.2	0.2	0.2	0.2	
Room dimensions		Viewed crosswise					Viewed endwise				
x = 2H y = 2H		25.1	26.6	25.3	26.8	27.0	24.3	25.8	24.6	26.1	26.3
	3H	26.8	28.2	27.1	28.4	28.7	25.7	27.1	26.0	27.3	27.5
	4H	27.6	28.9	27.9	29.2	29.4	26.1	27.4	26.4	27.7	28.0
	6H	28.2	29.5	28.6	29.8	30.1	26.3	27.6	26.7	27.8	28.1
	8H	28.5	29.7	28.8	30.0	30.3	26.3	27.5	26.7	27.8	28.1
	12H	28.7	29.9	29.1	30.2	30.5	26.3	27.4	26.6	27.8	28.1
4H	2H	25.7	27.0	26.0	27.3	27.5	25.1	26.5	25.5	26.7	27.0
	3H	27.6	28.8	28.0	29.1	29.4	26.8	27.9	27.1	28.2	28.5
	4H	28.5	29.6	28.9	29.9	30.3	27.4	28.4	27.8	28.8	29.1
	6H	29.4	30.3	29.8	30.7	31.0	27.8	28.7	28.2	29.1	29.4
	8H	29.7	30.6	30.1	30.9	31.3	27.8	28.7	28.2	29.1	29.5
	12H	30.0	30.8	30.4	31.2	31.6	27.8	28.6	28.2	29.0	29.4
8H	4H	28.9	29.7	29.3	30.1	30.5	27.9	28.7	28.3	29.1	29.5
	6H	29.8	30.6	30.3	31.0	31.4	28.5	29.2	28.9	29.6	30.1
	8H	30.3	31.0	30.8	31.4	31.8	28.7	29.3	29.1	29.8	30.2
	12H	30.7	31.3	31.2	31.7	32.2	28.7	29.3	29.2	29.8	30.2
12H	4H	28.9	29.7	29.3	30.1	30.5	27.9	28.7	28.4	29.1	29.5
	6H	29.9	30.6	30.4	31.0	31.5	28.6	29.3	29.1	29.7	30.2
	8H	30.4	31.0	30.9	31.5	31.9	28.9	29.5	29.4	29.9	30.4
Variations with the observer position at spacings:											
S = 1.0H	+ 0.1 / - 0.2					+ 0.2 / - 0.2					
1.5H	+ 0.2 / - 0.3					+ 0.3 / - 0.4					
2.0H	+ 0.1 / - 0.3					+ 0.2 / - 0.5					

CIE Pub.117, 16.43 lm Total Lamp Luminous Flux Correct (8log(F/F0) = -14.3)

C Range: 0 - 360DEG
C Interval: 30.0DEG
Test Speed: HIGH
Temperature:25.3DEG
Operators:LPC
Test Date:2021-12-29

γ Range: 0 - 120DEG
γ Interval: 1.0DEG
Test System:EVERFINE GO-2000B_V1 SYSTEM V2.0.362
Humidity:65.0%
Test Distance:9.200m [K=1.0000]
Remarks:

UTILIZATION FACTORS TABLE

Test:U:24.00V I:0.1924A P:4.618W PF:1.000 Freq:50.00Hz Lamp Flux:16.4275x1 lm		
NAME: SF15-24V-5050-56-SPI4-RGBW(3000)-B	TYPE: 硅胶	WEIGHT:
SPEC.:	DIM.: 21mm*11.5mm	SERIAL No.:2021122913
MFR.: OLYMPIA	SUR.:1*0.0115	Shielding Angle:

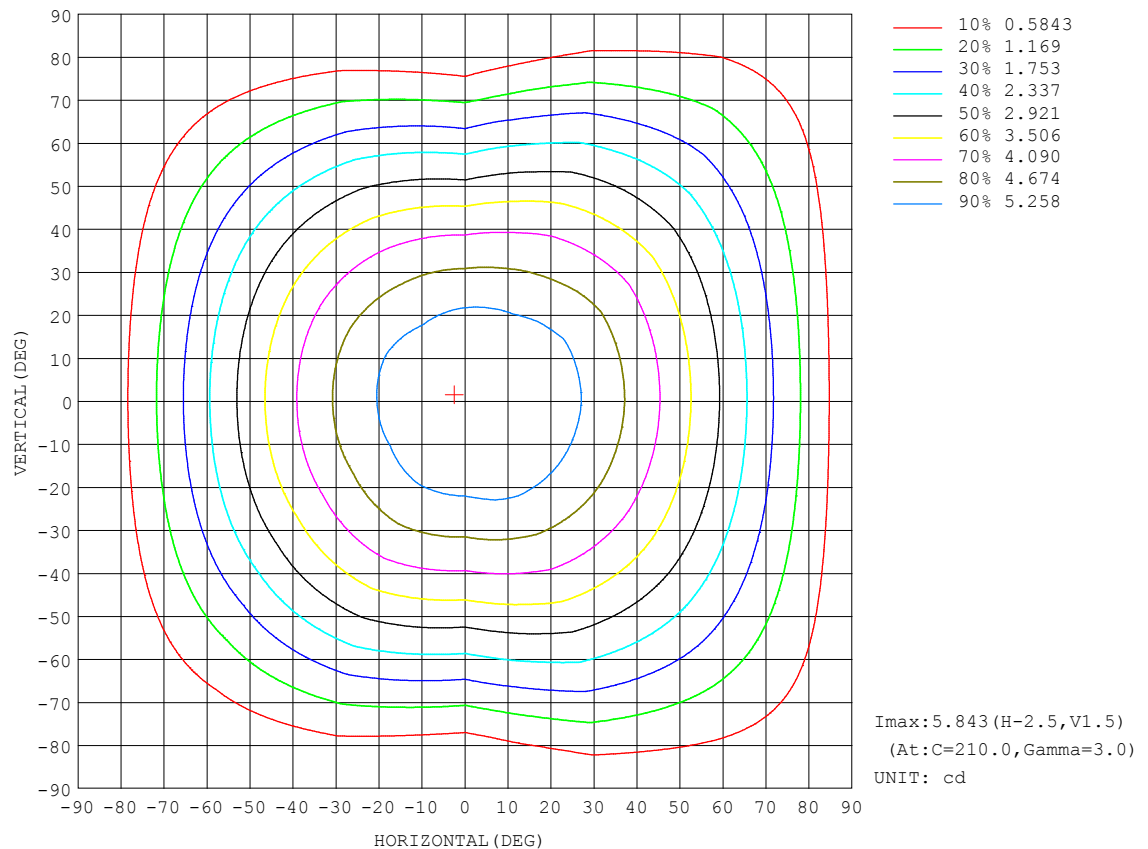
REFLECTANCE										
Ceiling	0.8	0.8	0.8	0.7	0.7	0.7	0.5	0.5	0.5	0
Walls	0.7	0.5	0.3	0.7	0.5	0.3	0.7	0.5	0.3	0
Working plane	0.2	0.2	0.2	0.2	0.2	0.2	0.2	0.2	0.2	0
ROOM INDEX	UTILIZATION FACTORS (PERCENT) $k(RI) \times RCR = 5$									
$k = 0.60$	58	46	39	57	46	39	56	45	39	32
0.80	68	56	49	67	55	48	65	55	48	41
1.00	76	65	57	75	64	57	72	66	57	50
1.25	83	72	65	82	72	65	79	70	64	57
1.50	88	78	71	86	77	71	83	75	69	62
2.00	95	86	80	93	85	79	89	83	77	70
2.50	99	91	85	97	90	84	93	87	82	74
3.00	102	95	90	100	94	89	96	91	86	78
4.00	106	100	96	104	99	94	99	95	92	83
5.00	108	104	100	106	102	98	101	98	95	86
ROOM INDEX	UF(total)									Direct
According to DIN EN 13032-2 2004			Suspended					SHRNOM = 1.25		

C Range: 0 - 360DEG
C Interval: 30.0DEG
Test Speed: HIGH
Temperature:25.3DEG
Operators:LPC
Test Date:2021-12-29

γ Range: 0 - 120DEG
 γ Interval: 1.0DEG
Test System:EVERFINE GO-2000B_V1 SYSTEM V2.0.362
Humidity:65.0%
Test Distance:9.200m [K=1.0000]
Remarks:

ISOCANDELA DIAGRAM

Test:U:24.00V I:0.1924A P:4.618W PF:1.000 Freq:50.00Hz Lamp Flux:16.4275x1 lm		
NAME: SF15-24V-5050-56-SPI4-RGBW(3000)-B	TYPE:硅胶	WEIGHT:
SPEC.:	DIM.: 21mm*11.5mm	SERIAL No.:2021122913
MFR.: OLYMPIA	SUR.:1*0.0115	Shielding Angle:



C Range: 0 - 360DEG
C Interval: 30.0DEG
Test Speed: HIGH
Temperature:25.3DEG
Operators:LPC
Test Date:2021-12-29

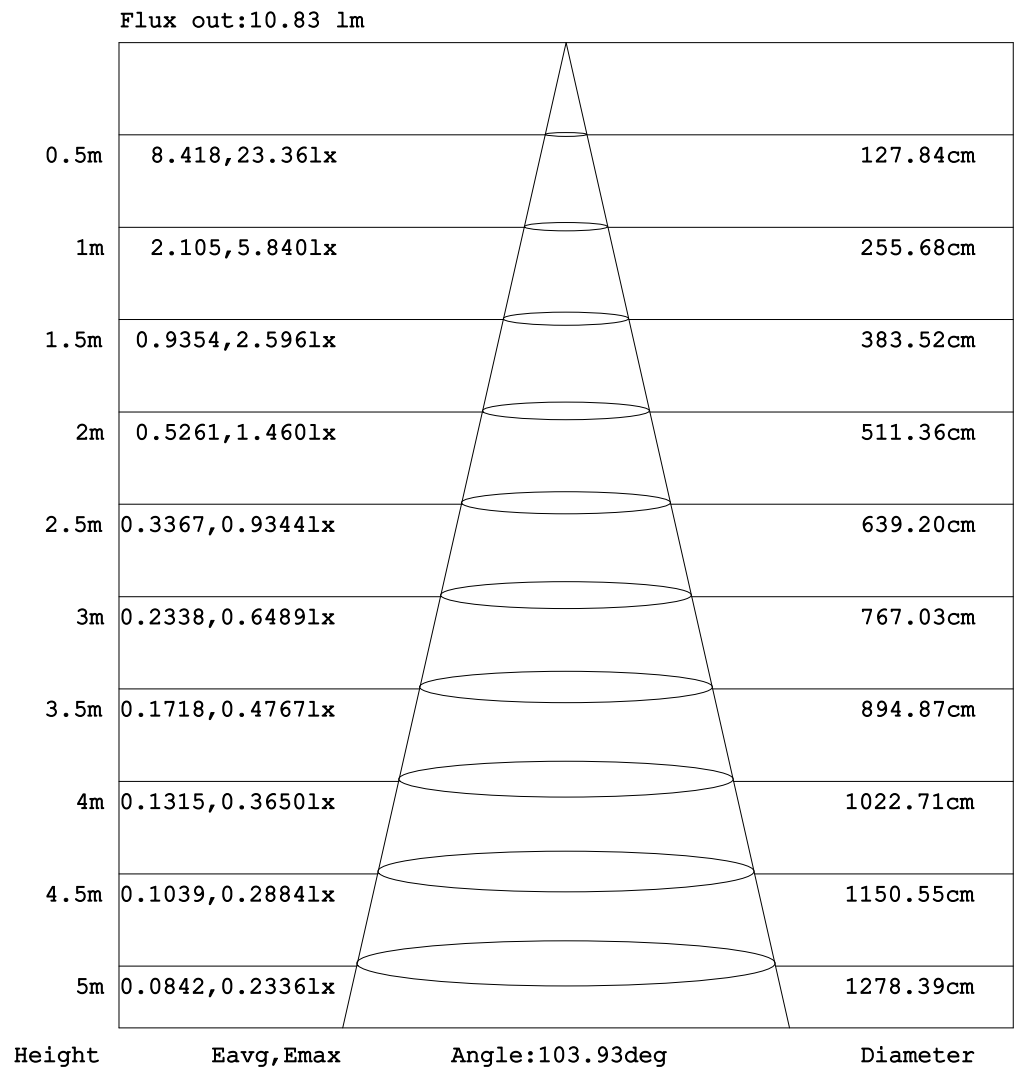
```

Range: 0 - 120DEG
Interval: 1.0DEG
Test System:EVERFINE GO-2000B_V1 SYSTEM V2.0.362
Humidity:65.0%
Test Distance:9.200m [K=1.0000]
Remarks:

```


AAI Figure

Test:U:24.00V I:0.1924A P:4.618W PF:1.000 Freq:50.00Hz Lamp Flux:16.4275x1 lm		
NAME: SF15-24V-5050-56-SPI4-RGBW(3000)-B	TYPE:硅胶	WEIGHT:
SPEC.:	DIM.: 21mm*11.5mm	SERIAL No.:2021122913
MFR.: OLYMPIA	SUR.:1*0.0115	Shielding Angle:



Note: The Curves indicate the illuminated area and the average illumination when the luminaire is at different distance.

C Range: 0 - 360DEG
C Interval: 30.0DEG
Test Speed: HIGH
Temperature: 25.3DEG
Operators: LPC
Test Date: 2021-12-29

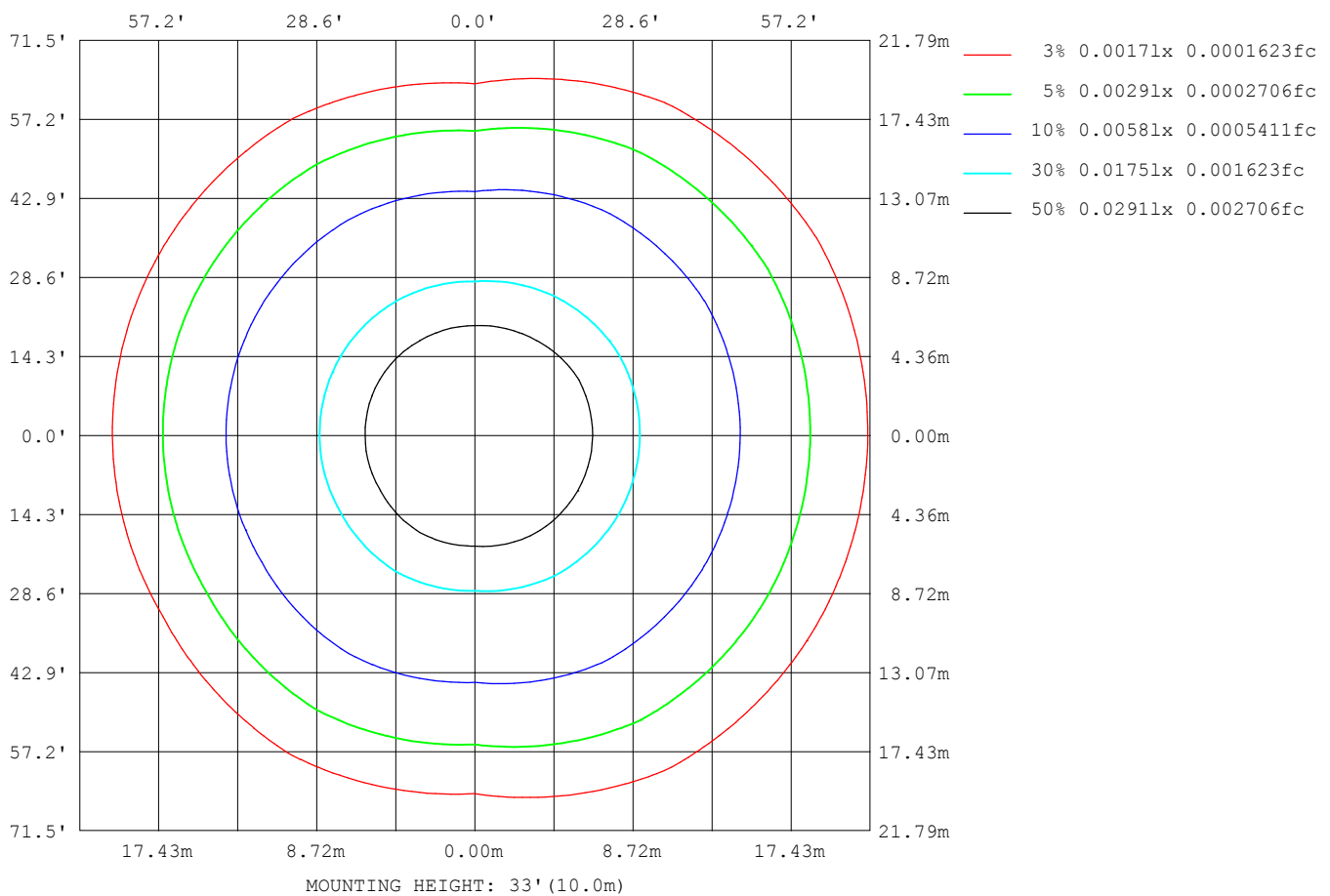
```

γ Range: 0 - 120DEG
γ Interval: 1.0DEG
Test System:EVERFINE GO-2000B_V1 SYSTEM V2.0.362
Humidity:65.0%
Test Distance:9.200m [K=1.0000]
Remarks:

```

ISOLUX DIAGRAM

Test:U:24.00V I:0.1924A P:4.618W PF:1.000 Freq:50.00Hz Lamp Flux:16.4275x1 lm		
NAME: SF15-24V-5050-56-SPI4-RGBW(3000)-B	TYPE:硅胶	WEIGHT:
SPEC.:	DIM.: 21mm*11.5mm	SERIAL No.:2021122913
MFR.: OLYMPIA	SUR.:1*0.0115	Shielding Angle:



C Range: 0 - 360DEG
C Interval: 30.0DEG
Test Speed: HIGH
Temperature:25.3DEG
Operators:LPC
Test Date:2021-12-29

```

Range: 0 - 120DEG
Interval: 1.0DEG
Test System:EVERFINE GO-2000B_V1 SYSTEM V2.0.362
Humidity:65.0%
Test Distance:9.200m [K=1.0000]
Remarks:

```

LED Avg.L Report

Test:U:24.00V I:0.1924A P:4.618W PF:1.000 Freq:50.00Hz Lamp Flux:16.4275x1 lm		
NAME: SF15-24V-5050-56-SPI4-RGBW(3000)-B	TYPE:硅胶	WEIGHT:
SPEC.:	DIM.: 21mm*11.5mm	SERIAL No.:2021122913
MFR.: OLYMPIA	SUR.:1*0.0115	Shielding Angle:

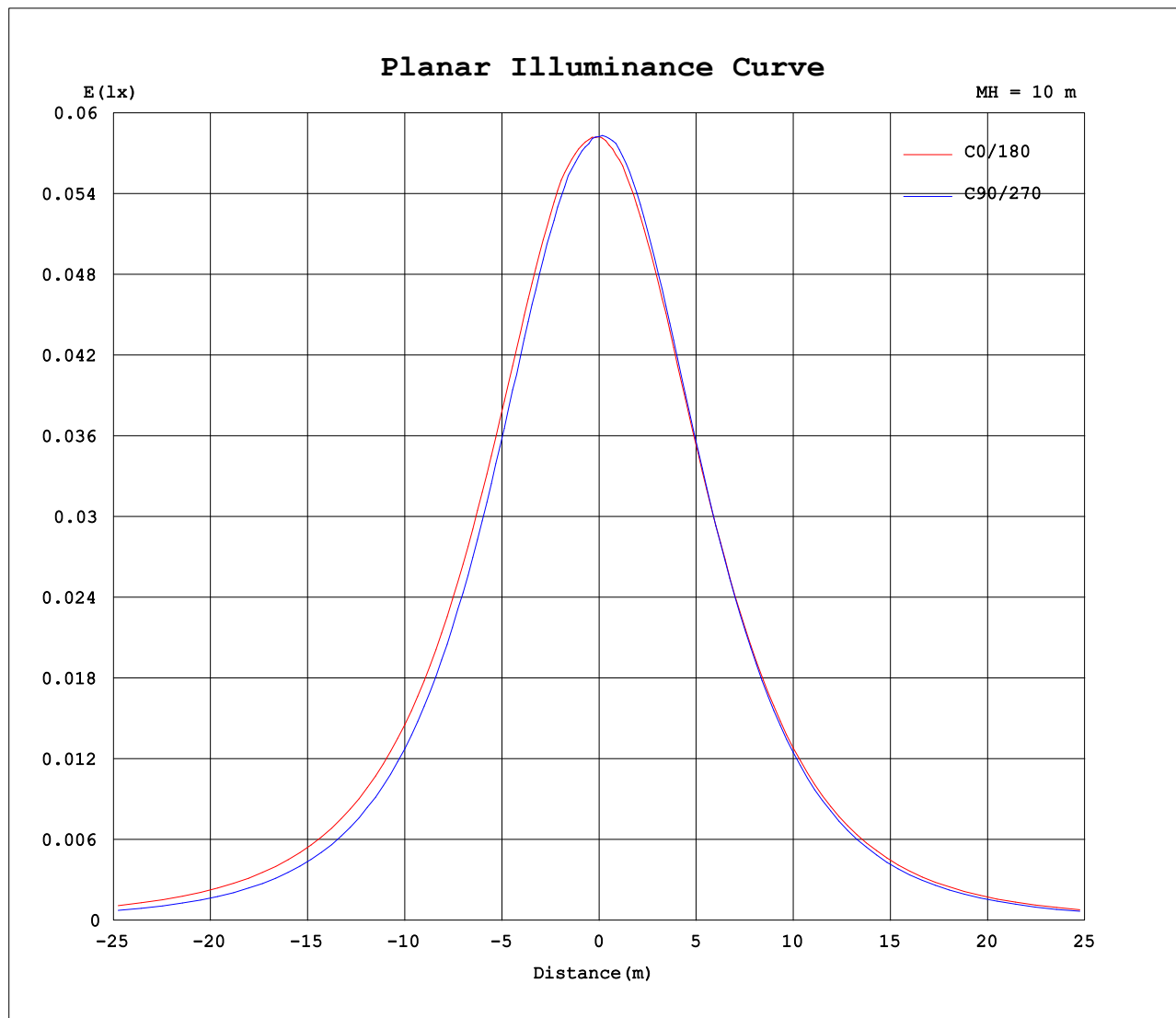
AvgL	cd/m2
L_0~180(65)av	431
L_0~180(75)av	391
L_0~180(85)av	371
L_90~270(65)av	342
L_90~270(75)av	232
L_90~270(85)av	8
L_45(65)av	431
L_45(75)av	392
L_45(85)av	344

Standard: GB/T 29293-2012

C Range: 0 - 360DEG
C Interval: 30.0DEG
Test Speed: HIGH
Temperature:25.3DEG
Operators:LPC
Test Date:2021-12-29

γ Range: 0 - 120DEG
γ Interval: 1.0DEG
Test System:EVERFINE GO-2000B_V1 SYSTEM V2.0.362
Humidity:65.0%
Test Distance:9.200m [K=1.0000]
Remarks:

Planar Illuminance Curve



C Range: 0 - 360DEG
C Interval: 30.0DEG
Test Speed: HIGH
Temperature: 25.3DEG
Operators: LPC
Test Date: 2021-12-29

γ Range: 0 - 120DEG
 γ Interval: 1.0DEG
Test System: EVERFINE GO-2000B_V1 SYSTEM V2.0.362
Humidity: 65.0%
Test Distance: 9.200m [K=1.0000]
Remarks:

LUMINOUS DISTRIBUTION INTENSITY DATA

Test:U:24.00V I:0.1924A P:4.618W PF:1.000 Freq:50.00Hz Lamp Flux:16.4275x1 lm		
NAME: SF15-24V-5050-56-SPI4-RGBW(3000)-B	TYPE:硅胶	WEIGHT:
SPEC.:	DIM.: 21mm*11.5mm	SERIAL No.:2021122913
MFR.: OLYMPIA	SUR.:1*0.0115	Shielding Angle:

Table--1

UNIT: cd

C (DEG) γ (DEG)	0	30	60	90	120	150	180	210	240	270	300	330						
0	5.82	5.84	5.83	5.82	5.83	5.82	5.82	5.84	5.83	5.82	5.83	5.82						
5	5.83	5.83	5.83	5.78	5.82	5.75	5.75	5.81	5.76	5.84	5.82	5.83						
10	5.82	5.77	5.80	5.71	5.71	5.64	5.65	5.69	5.66	5.74	5.74	5.83						
15	5.72	5.67	5.68	5.58	5.56	5.48	5.50	5.53	5.50	5.58	5.60	5.72						
20	5.56	5.51	5.50	5.36	5.36	5.27	5.28	5.32	5.27	5.35	5.43	5.55						
25	5.36	5.31	5.26	5.11	5.10	5.02	5.02	5.06	5.02	5.07	5.17	5.35						
30	5.11	5.06	4.98	4.78	4.82	4.71	4.73	4.76	4.72	4.74	4.86	5.11						
35	4.82	4.76	4.66	4.43	4.48	4.38	4.39	4.42	4.39	4.37	4.56	4.82						
40	4.48	4.42	4.31	4.03	4.13	4.01	4.03	4.06	4.05	3.97	4.25	4.49						
45	4.12	4.07	3.96	3.61	3.72	3.60	3.63	3.65	3.64	3.53	3.90	4.14						
50	3.72	3.67	3.56	3.17	3.30	3.17	3.19	3.23	3.23	3.07	3.51	3.75						
55	3.29	3.25	3.14	2.69	2.86	2.72	2.76	2.78	2.78	2.58	3.09	3.32						
60	2.86	2.81	2.70	2.21	2.39	2.25	2.28	2.31	2.32	2.09	2.66	2.89						
65	2.39	2.35	2.25	1.72	1.92	1.76	1.80	1.82	1.84	1.61	2.21	2.43						
70	1.92	1.88	1.78	1.24	1.44	1.30	1.33	1.35	1.38	1.10	1.74	1.96						
75	1.46	1.42	1.33	0.76	0.98	0.83	0.87	0.89	0.91	0.62	1.28	1.49						
80	0.99	0.94	0.87	0.34	0.54	0.44	0.47	0.48	0.47	0.22	0.82	1.03						
85	0.56	0.52	0.45	0.02	0.21	0.16	0.18	0.20	0.13	0.00	0.39	0.58						
90	0.26	0.19	0.14	0.02	0.07	0.05	0.02	0.05	0.01	0.00	0.07	0.25						
95	0.09	0.04	0.04	0.02	0.06	0.05	0.00	0.02	0.01	0.00	0.00	0.08						
100	0.03	0.02	0.04	0.02	0.05	0.05	0.00	0.02	0.01	0.00	0.00	0.01						
105	0.02	0.02	0.03	0.02	0.04	0.05	0.00	0.02	0.01	0.00	0.00	0.01						
110	0.02	0.02	0.03	0.02	0.04	0.05	0.00	0.02	0.01	0.00	0.00	0.01						
115	0.02	0.03	0.03	0.02	0.04	0.05	0.00	0.01	0.01	0.00	0.00	0.01						
120	0.02	0.03	0.03	0.02	0.05	0.05	0.00	0.01	0.01	0.00	0.00	0.01						
125	0.00	0.00	0.00	0.00	0.00	0.00	0.00	0.00	0.00	0.00	0.00	0.00						
130	0.00	0.00	0.00	0.00	0.00	0.00	0.00	0.00	0.00	0.00	0.00	0.00						
135	0.00	0.00	0.00	0.00	0.00	0.00	0.00	0.00	0.00	0.00	0.00	0.00						
140	0.00	0.00	0.00	0.00	0.00	0.00	0.00	0.00	0.00	0.00	0.00	0.00						
145	0.00	0.00	0.00	0.00	0.00	0.00	0.00	0.00	0.00	0.00	0.00	0.00						
150	0.00	0.00	0.00	0.00	0.00	0.00	0.00	0.00	0.00	0.00	0.00	0.00						
155	0.00	0.00	0.00	0.00	0.00	0.00	0.00	0.00	0.00	0.00	0.00	0.00						
160	0.00	0.00	0.00	0.00	0.00	0.00	0.00	0.00	0.00	0.00	0.00	0.00						
165	0.00	0.00	0.00	0.00	0.00	0.00	0.00	0.00	0.00	0.00	0.00	0.00						
170	0.00	0.00	0.00	0.00	0.00	0.00	0.00	0.00	0.00	0.00	0.00	0.00						
175	0.00	0.00	0.00	0.00	0.00	0.00	0.00	0.00	0.00	0.00	0.00	0.00						
180	0.00	0.00	0.00	0.00	0.00	0.00	0.00	0.00	0.00	0.00	0.00	0.00						

C Range: 0 - 360DEG
C Interval: 30.0DEG
Test Speed: HIGH
Temperature:25.3DEG
Operators:LPC
Test Date:2021-12-29

γ Range: 0 - 120DEG
γ Interval: 1.0DEG
Test System:EVERFINE GO-2000B_V1 SYSTEM V2.0.362
Humidity:65.0%
Test Distance:9.200m [K=1.0000]
Remarks:

Photometric Data Table [cd]

G/C	0.0	30.0	60.0	90.0	120.0	150.0	180.0	210.0	240.0	270.0
0.0	5.825	5.840	5.830	5.825	5.835	5.825	5.825	5.840	5.830	5.825
3.0	5.825	5.840	5.830	5.795	5.835	5.780	5.785	5.845	5.785	5.835
6.0	5.828	5.828	5.825	5.769	5.805	5.739	5.744	5.795	5.744	5.820
9.0	5.820	5.789	5.820	5.744	5.745	5.659	5.674	5.725	5.684	5.770
12.0	5.795	5.749	5.765	5.664	5.659	5.578	5.588	5.639	5.598	5.684
15.0	5.720	5.669	5.684	5.578	5.564	5.483	5.498	5.529	5.503	5.579
18.0	5.634	5.583	5.584	5.448	5.443	5.357	5.367	5.413	5.362	5.453
21.0	5.529	5.488	5.463	5.317	5.313	5.216	5.231	5.268	5.216	5.298
24.0	5.403	5.352	5.318	5.171	5.157	5.066	5.080	5.117	5.065	5.127
27.0	5.263	5.211	5.157	4.975	4.991	4.889	4.909	4.946	4.895	4.941
30.0	5.107	5.055	4.976	4.784	4.815	4.714	4.729	4.760	4.719	4.740
33.0	4.931	4.885	4.790	4.573	4.614	4.513	4.547	4.564	4.527	4.524
36.0	4.750	4.698	4.594	4.366	4.413	4.301	4.321	4.353	4.321	4.288
39.0	4.549	4.492	4.388	4.125	4.192	4.085	4.095	4.132	4.105	4.057
42.0	4.338	4.286	4.167	3.879	3.971	3.854	3.884	3.906	3.884	3.800
45.0	4.117	4.065	3.956	3.608	3.725	3.603	3.628	3.654	3.643	3.534
48.0	3.881	3.839	3.720	3.341	3.474	3.346	3.371	3.398	3.397	3.242
51.0	3.635	3.588	3.474	3.065	3.217	3.085	3.105	3.142	3.140	2.961
54.0	3.383	3.336	3.222	2.778	2.946	2.809	2.839	2.871	2.874	2.685
57.0	3.122	3.085	2.966	2.497	2.670	2.532	2.557	2.589	2.607	2.378
60.0	2.855	2.808	2.700	2.205	2.393	2.246	2.276	2.308	2.321	2.092
63.0	2.574	2.537	2.433	1.909	2.107	1.954	1.989	2.021	2.039	1.785
66.0	2.298	2.256	2.152	1.622	1.820	1.663	1.708	1.720	1.748	1.494
69.0	2.006	1.979	1.871	1.331	1.539	1.396	1.426	1.448	1.472	1.212
72.0	1.730	1.683	1.594	1.039	1.253	1.100	1.145	1.172	1.185	0.9107
75.0	1.459	1.421	1.328	0.7582	0.9759	0.8336	0.8686	0.8855	0.9137	0.6242
78.0	1.172	1.130	1.051	0.4868	0.7045	0.5873	0.6124	0.6391	0.6323	0.3777
81.0	0.9004	0.8485	0.7799	0.2506	0.4631	0.3812	0.4015	0.4177	0.3862	0.1514
84.0	0.6393	0.5972	0.5237	0.0449	0.2620	0.1956	0.2306	0.2419	0.1853	0.0054
87.0	0.4229	0.3564	0.2973	0.0151	0.1261	0.0852	0.1051	0.1210	0.0349	0
90.0	0.2568	0.1906	0.1362	0.0151	0.0705	0.0502	0.0200	0.0504	0.0050	0
93.0	0.1460	0.0801	0.0655	0.0151	0.0553	0.0452	0	0.0201	0.0050	0
96.0	0.0755	0.0251	0.0352	0.0151	0.0553	0.0452	0	0.0201	0.0050	0
99.0	0.0303	0.0201	0.0352	0.0151	0.0503	0.0452	0	0.0151	0.0050	0
102.0	0.0151	0.0201	0.0302	0.0151	0.0403	0.0452	0	0.0151	0.0050	0
105.0	0.0151	0.0201	0.0252	0.0151	0.0352	0.0452	0	0.0151	0.0051	0
108.0	0.0151	0.0201	0.0251	0.0151	0.0352	0.0452	0	0.0151	0.0101	0
111.0	0.0151	0.0251	0.0251	0.0151	0.0352	0.0452	0	0.0151	0.0101	0
114.0	0.0151	0.0251	0.0251	0.0151	0.0352	0.0452	0	0.0101	0.0101	0
117.0	0.0151	0.0251	0.0251	0.0151	0.0352	0.0302	0	0.0101	0.0101	0
120.0	0.0151	0.0251	0.0302	0.0151	0.0452	0.0452	0	0.0101	0.0101	0
G/C	300.0	330.0								
0.0	5.835	5.825								
3.0	5.830	5.825								
6.0	5.819	5.828								
9.0	5.759	5.830								
12.0	5.689	5.795								
15.0	5.599	5.725								
18.0	5.488	5.634								
21.0	5.362	5.509								
24.0	5.211	5.393								
27.0	5.045	5.257								
30.0	4.859	5.112								
33.0	4.698	4.936								
36.0	4.502	4.760								
39.0	4.311	4.559								
42.0	4.125	4.348								
45.0	3.899	4.137								
48.0	3.668	3.901								
51.0	3.432	3.660								
54.0	3.180	3.413								
57.0	2.929	3.152								
60.0	2.658	2.885								
63.0	2.386	2.614								
66.0	2.115	2.333								
69.0	1.833	2.051								
72.0	1.562	1.770								
75.0	1.276	1.494								
78.0	0.9992	1.212								
81.0	0.7278	0.9356								
84.0	0.4714	0.6693								
87.0	0.2406	0.4279								
90.0	0.0700	0.2518								

C Range: 0 - 360DEG
C Interval: 30.0DEG
Test Speed: HIGH
Temperature:25.3DEG
Operators:LPC
Test Date:2021-12-29

```

γ Range: 0 - 120DEG
γ Interval: 1.0DEG
Test System:EVERFINE GO-2000B_V1 SYSTEM V2.0.362
Humidity:65.0%
Test Distance:9.200m [K=1.0000]
Remarks:

```

93.0	0	0.1309
96.0	0	0.0555
99.0	0	0.0101
102.0	0	0.0050
105.0	0	0.0050
108.0	0	0.0050
111.0	0	0.0050
114.0	0	0.0050
117.0	0	0.0050
120.0	0	0.0050

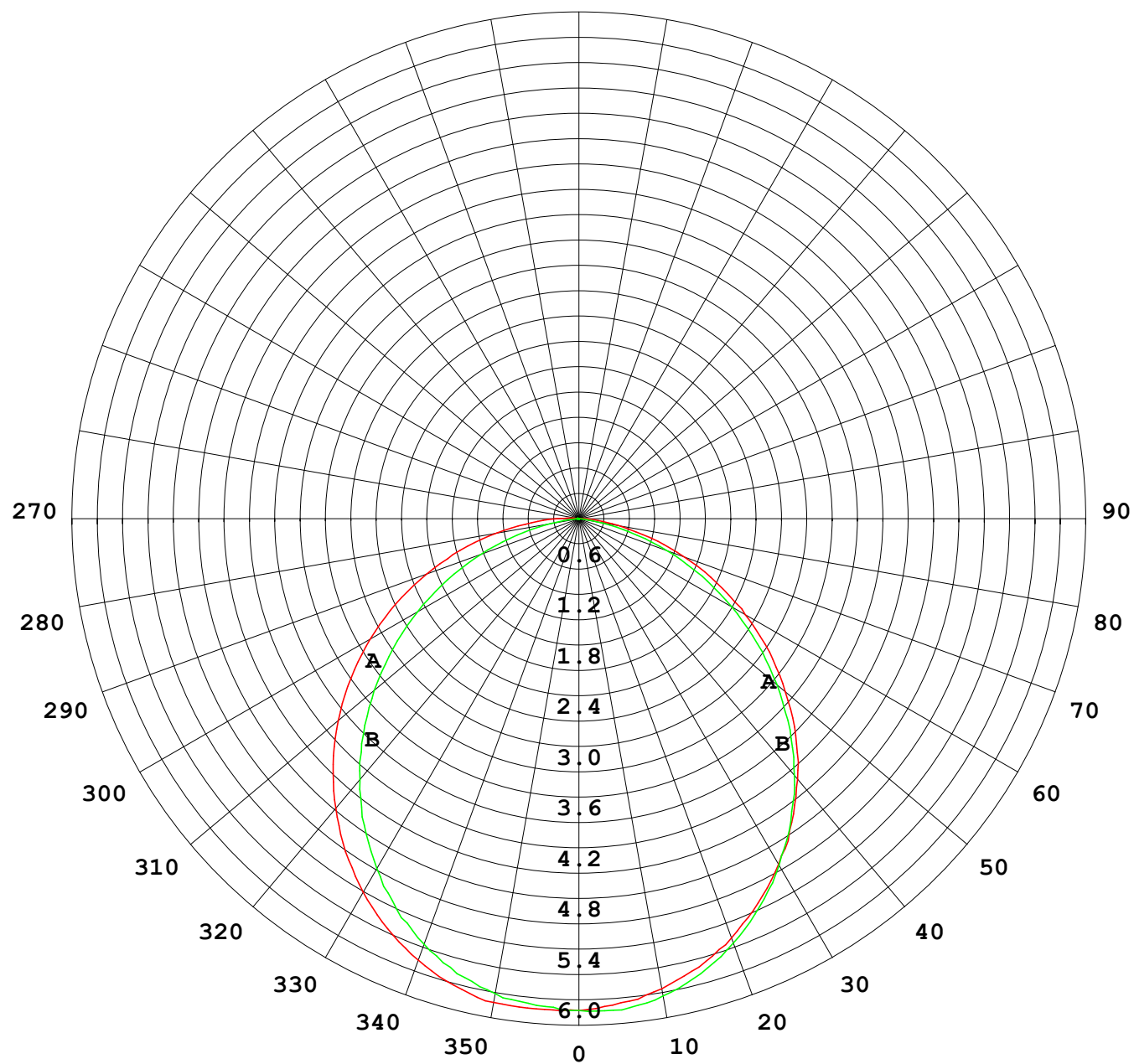
C Range: 0 - 360DEG
C Interval: 30.0DEG
Test Speed: HIGH
Temperature:25.3DEG
Operators:LPC
Test Date:2021-12-29

```

✓ Range: 0 - 120DEG
✓ Interval: 1.0DEG
Test System:EVERFINE GO-2000B_V1 SYSTEM V2.0.362
Humidity:65.0%
Test Distance:9.200m [K=1.0000]
Remarks:

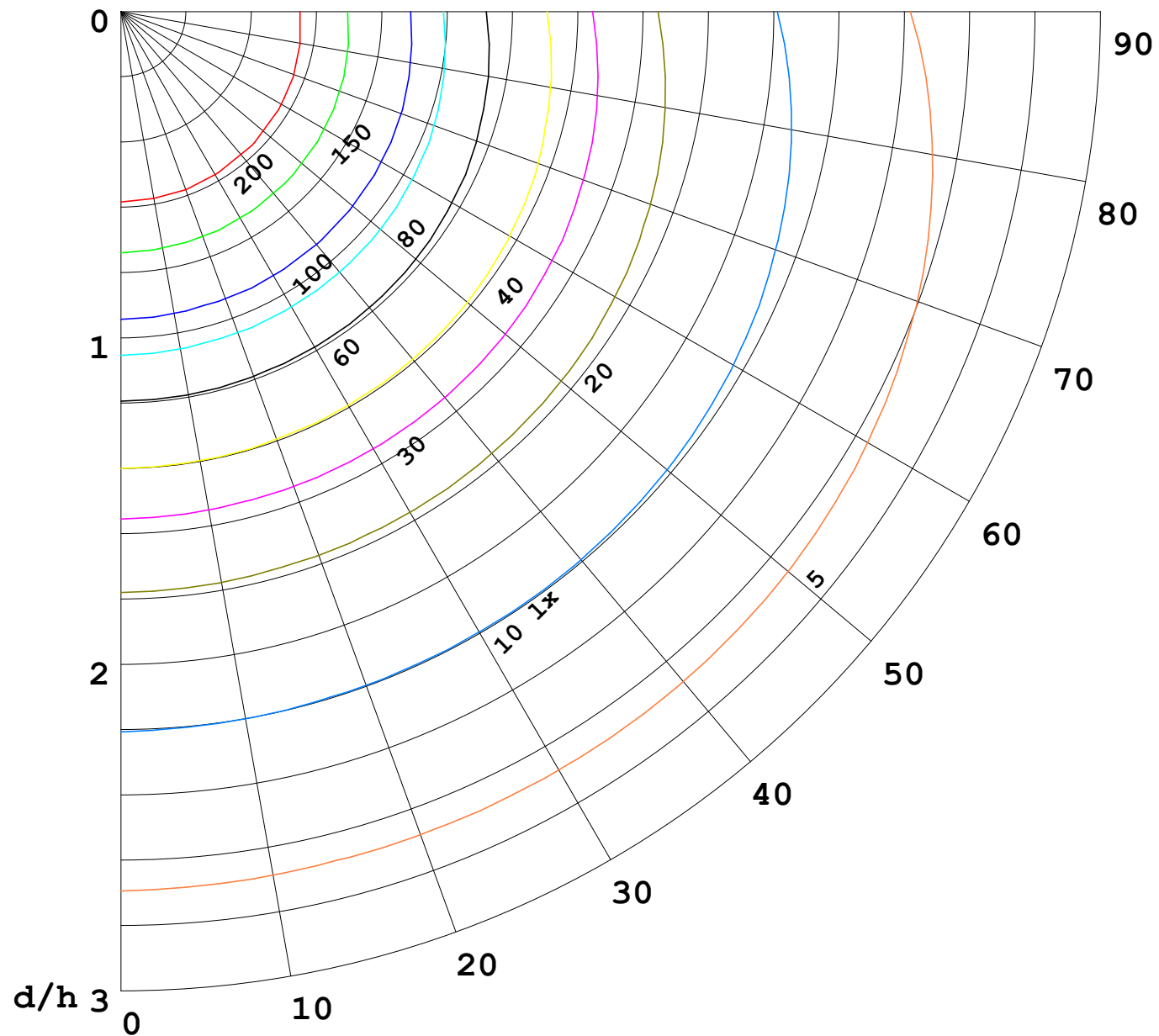
```

I (cd)



1000 lm

$\kappa = 1$



F = 5000 lm
 K = 0.7
 Hcc = 0.0 m
 Hfc = 0.0 m
 Eave = 100 lx

	Pcc	Pw	Pfc
—	70	50	30
—	50	30	20

