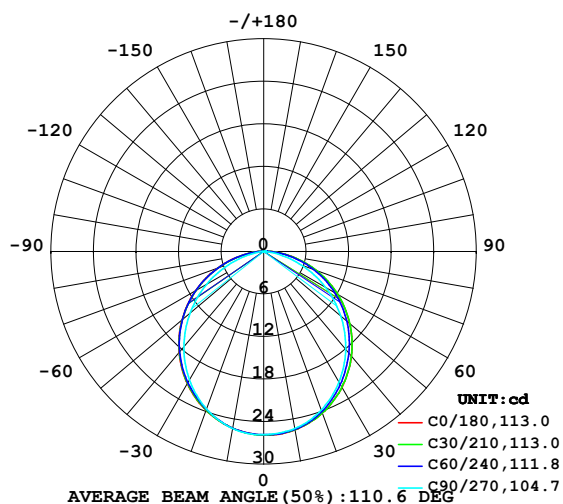


LUMINAIRE PHOTOMETRIC TEST REPORT

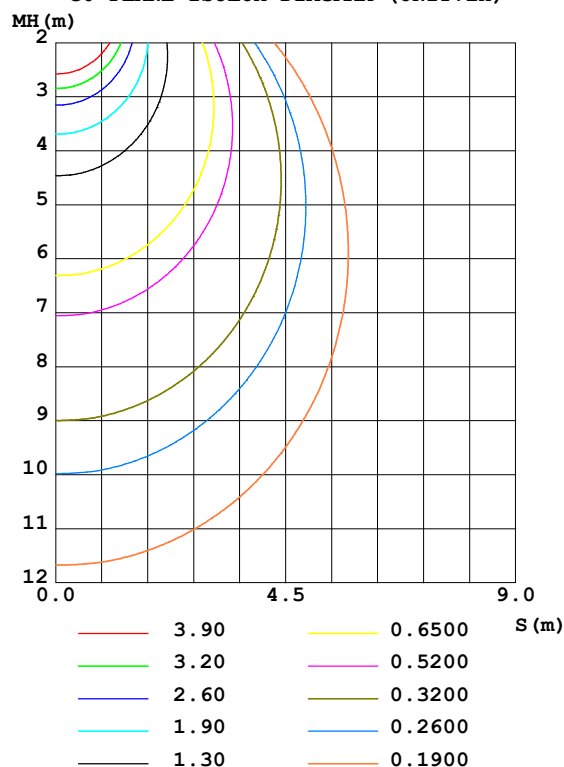
Test:U:24.00V I:0.1929A P:4.630W PF:1.000 Freq:50.00Hz Lamp Flux:74.1676x1 lm		
NAME: SF15-24V-5050-56-SPI4-RGBW(2700)-G	TYPE: 硅胶	WEIGHT:
SPEC.:	DIM.: 21mm*11.5mm	SERIAL No.:2021122907
MFR.: OLYMPIA	SUR.:1*0.0115	Shielding Angle:

DATA OF LAMP		PHOTOMETRIC DATA Eff: 16.02 lm/W			
MODEL	5050	I _{max} (cd)	25.89	S/MH (C0/180)	1.24
NOMINAL POWER(W)	3.75	LOR(%)	100.0	S/MH (C90/270)	1.21
RATED VOLTAGE(V)	24	TOTAL FLUX(lm)	74.168	η UP,DN(C0-180)	0.7,49.9
NOMINAL FLUX(lm)	74.1676	CIE CLASS	DIRECT	η UP,DN(C180-360)	0.6,48.9
LAMPS INSIDE	1	η up (%)	1.2	CIBSE SHR NOM	1.25
TEST VOLTAGE(V)	24	η down (%)	98.8	CIBSE SHR MAX	1.35

LUMINOUS INTENSITY DISTRIBUTION DIAGRAM



C0 PLANE ISOLUX DIAGRAM (UNIT:lx)

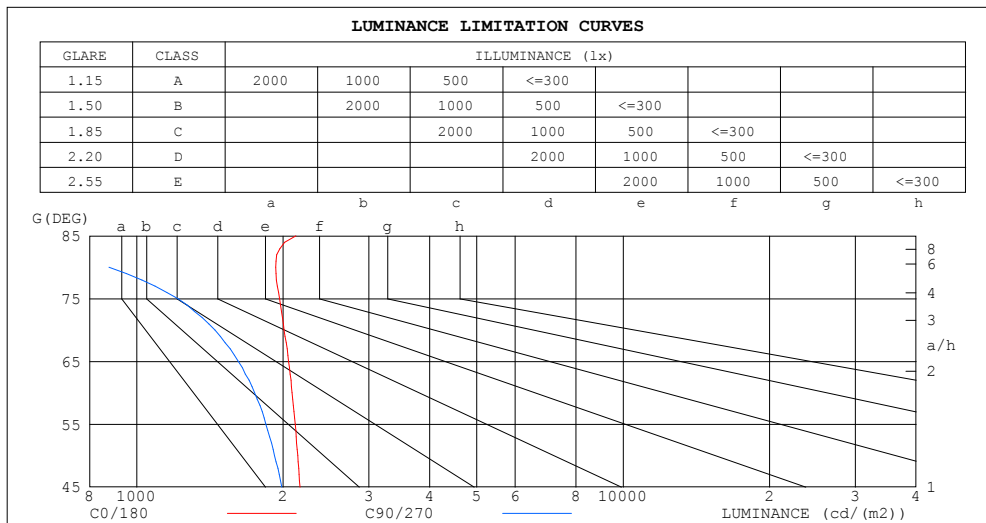


C Range: 0 - 360DEG
C Interval: 30.0DEG
Test Speed: HIGH
Temperature: 25.3DEG
Operators: LPC
Test Date: 2021-12-29

γ Range: 0 - 120DEG
γ Interval: 1.0DEG
Test System: EVERFINE GO-2000B_V1 SYSTEM V2.0.362
Humidity: 65.0%
Test Distance: 9.200m [K=1.0000]
Remarks:

LUMINANCE LIMITATION CURVES

Test:U:24.00V I:0.1929A P:4.630W PF:1.000 Freq:50.00Hz Lamp Flux:74.1676x1 lm		
NAME: SF15-24V-5050-56-SPI4-RGBW(2700) -G	TYPE: 硅胶	WEIGHT:
SPEC.:	DIM.: 21mm*11.5mm	SERIAL No.:2021122907
MFR.: OLYMPIA	SUR.:1*0.0115	Shielding Angle:



LUMINANCE cd/(m2)		
G (DEG)	C0/180	C90/270
85	2124	320
80	1932	877
75	1967	1215
70	2010	1448
65	2051	1618
60	2086	1747
55	2116	1843
50	2142	1920
45	2165	1988

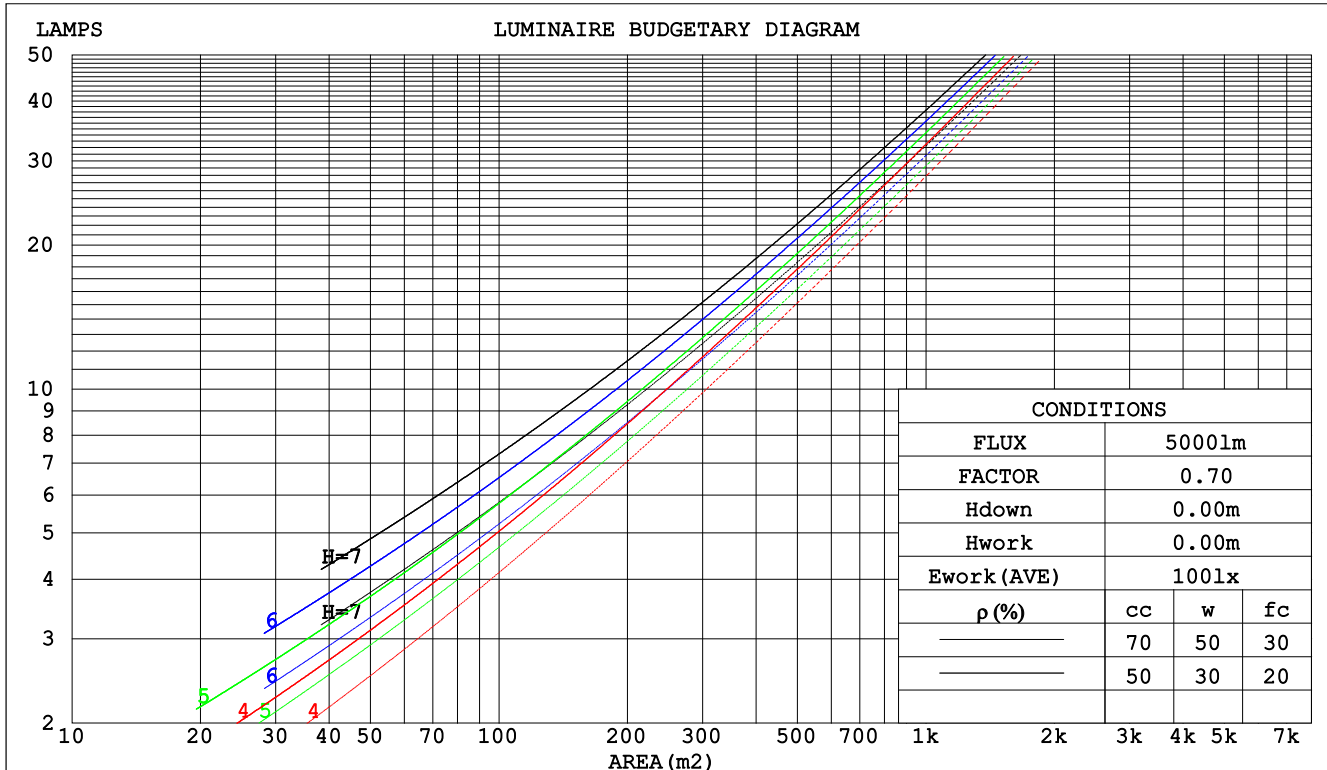
C Range: 0 - 360DEG
C Interval: 30.0DEG
Test Speed: HIGH
Temperature:25.3DEG
Operators:LPC
Test Date:2021-12-29

γ Range: 0 - 120DEG
 γ Interval: 1.0DEG
Test System:EVERFINE GO-2000B_V1 SYSTEM V2.0.362
Humidity:65.0%
Test Distance:9.200m [K=1.0000]
Remarks:

CU AND LUMINAIRE BUDGETARY ESTIMATE DIAGRAM

Test:U:24.00V I:0.1929A P:4.630W PF:1.000 Freq:50.00Hz Lamp Flux:74.1676x1 lm		
NAME: SF15-24V-5050-56-SPI4-RGBW(2700) -G	TYPE: 硅胶	WEIGHT:
SPEC.:	DIM.: 21mm*11.5mm	SERIAL No.:2021122907
MFR.: OLYMPIA	SUR.:1*0.0115	Shielding Angle:

pcc	80%			70%			50%			30%			10%			0
pw	50%	30%	10%	50%	30%	10%	50%	30%	10%	50%	30%	10%	50%	30%	10%	0
pfc	20%			20%			20%			20%			20%			0
RCR	RCR:Room Cavity Ratio						Coefficients of Utilization(CU)									
0.0	1.19	1.19	1.19	1.16	1.16	1.16	1.10	1.10	1.10	1.05	1.05	1.05	1.01	1.01	1.01	.99
1.0	1.03	.99	.95	1.01	.97	.93	.96	.93	.90	.92	.90	.87	.89	.86	.84	.82
2.0	.90	.83	.77	.88	.82	.76	.84	.79	.74	.81	.76	.72	.78	.74	.71	.68
3.0	.79	.71	.64	.77	.70	.63	.74	.68	.62	.71	.66	.61	.68	.64	.60	.57
4.0	.70	.61	.54	.68	.60	.54	.66	.59	.53	.63	.57	.52	.61	.56	.51	.49
5.0	.62	.53	.47	.61	.53	.46	.59	.51	.46	.57	.50	.45	.55	.49	.44	.42
6.0	.56	.47	.41	.55	.47	.40	.53	.46	.40	.51	.45	.40	.50	.44	.39	.37
7.0	.51	.42	.36	.50	.42	.36	.48	.41	.35	.47	.40	.35	.45	.39	.35	.33
8.0	.46	.38	.32	.46	.38	.32	.44	.37	.32	.43	.36	.31	.42	.36	.31	.29
9.0	.43	.34	.29	.42	.34	.29	.41	.34	.28	.40	.33	.28	.38	.32	.28	.26
10.0	.39	.31	.26	.39	.31	.26	.38	.31	.26	.37	.30	.26	.36	.30	.25	.24



C Range: 0 - 360DEG
 C Interval: 30.0DEG
 Test Speed: HIGH
 Temperature:25.3DEG
 Operators:LPC
 Test Date:2021-12-29

γ Range: 0 - 120DEG
 γ Interval: 1.0DEG
 Test System:EVERFINE GO-2000B_V1 SYSTEM V2.0.362
 Humidity:65.0%
 Test Distance:9.200m [K=1.0000]
 Remarks:

WEC AND CCEC

Test:U:24.00V I:0.1929A P:4.630W PF:1.000 Freq:50.00Hz Lamp Flux:74.1676x1 lm		
NAME: SF15-24V-5050-56-SPI4-RGBW(2700) -G	TYPE: 硅胶	WEIGHT:
SPEC.:	DIM.: 21mm*11.5mm	SERIAL No.:2021122907
MFR.: OLYMPIA	SUR.:1*0.0115	Shielding Angle:

pcc	80%			70%			50%			30%			10%			0	
pw	50%	30%	10%	50%	30%	10%	50%	30%	10%	50%	30%	10%	50%	30%	10%	0	
pfc	20%			20%			20%			20%			20%			0	
RCR	RCR:Room Cavity Ratio						Wall Exitance Coeffcients(WEC)										
0.0																	
1.0	.314	.179	.057	.307	.175	.056	.293	.168	.054	.280	.161	.052	.268	.155	.050		
2.0	.294	.161	.049	.287	.158	.049	.275	.153	.047	.263	.148	.046	.253	.143	.045		
3.0	.271	.144	.043	.265	.142	.043	.254	.138	.042	.244	.134	.041	.235	.130	.040		
4.0	.250	.130	.038	.244	.128	.038	.235	.124	.037	.226	.121	.037	.217	.118	.036		
5.0	.231	.117	.034	.226	.116	.034	.217	.113	.033	.209	.110	.033	.202	.108	.032		
6.0	.214	.107	.031	.210	.106	.030	.202	.103	.030	.195	.101	.030	.188	.099	.029		
7.0	.199	.098	.028	.195	.097	.028	.188	.095	.027	.182	.093	.027	.176	.091	.027		
8.0	.186	.091	.025	.182	.090	.025	.176	.088	.025	.170	.086	.025	.165	.085	.025		
9.0	.174	.084	.023	.171	.083	.023	.165	.082	.023	.160	.080	.023	.155	.079	.023		
10.0	.163	.078	.022	.161	.078	.022	.156	.076	.021	.151	.075	.021	.146	.074	.021		

pcc	80%			70%			50%			30%			10%			0
pw	50%	30%	10%	50%	30%	10%	50%	30%	10%	50%	30%	10%	50%	30%	10%	0
pfc	20%			20%			20%			20%			20%			0
RCR	RCR:Room Cavity Ratio						Ceiling Cavity Exitance Coefficients(CCEC)									
0.0	.200	.200	.200	.171	.171	.171	.117	.117	.117	.067	.067	.067	.021	.021	.021	
1.0	.190	.166	.143	.163	.142	.123	.111	.098	.085	.064	.057	.050	.021	.018	.016	
2.0	.182	.141	.107	.156	.122	.093	.107	.084	.065	.062	.049	.038	.020	.016	.012	
3.0	.174	.124	.084	.149	.107	.073	.103	.074	.051	.059	.043	.030	.019	.014	.010	
4.0	.167	.111	.068	.143	.096	.059	.098	.067	.042	.057	.039	.025	.018	.013	.008	
5.0	.159	.100	.057	.137	.087	.049	.094	.061	.035	.055	.036	.021	.018	.012	.007	
6.0	.152	.092	.049	.131	.080	.042	.090	.056	.030	.052	.033	.018	.017	.011	.006	
7.0	.145	.085	.043	.125	.074	.037	.086	.052	.026	.050	.030	.016	.016	.010	.005	
8.0	.139	.079	.038	.119	.069	.033	.083	.048	.024	.048	.028	.014	.016	.009	.005	
9.0	.133	.074	.035	.114	.064	.030	.079	.045	.022	.046	.027	.013	.015	.009	.004	
10.0	.127	.070	.032	.109	.061	.028	.076	.043	.020	.044	.025	.012	.014	.008	.004	

C Range: 0 - 360DEG
 C Interval: 30.0DEG
 Test Speed: HIGH
 Temperature:25.3DEG
 Operators:LPC
 Test Date:2021-12-29

γ Range: 0 - 120DEG
 γ Interval: 1.0DEG
 Test System:EVERFINE GO-2000B_V1 SYSTEM V2.0.362
 Humidity:65.0%
 Test Distance:9.200m [K=1.0000]
 Remarks:

UTILIZATION FACTORS TABLE

Test:U:24.00V I:0.1929A P:4.630W PF:1.000 Freq:50.00Hz Lamp Flux:74.1676x1 lm		
NAME: SF15-24V-5050-56-SPI4-RGBW(2700) -G	TYPE: 硅胶	WEIGHT:
SPEC.:	DIM.: 21mm*11.5mm	SERIAL No.:2021122907
MFR.: OLYMPIA	SUR.:1*0.0115	Shielding Angle:

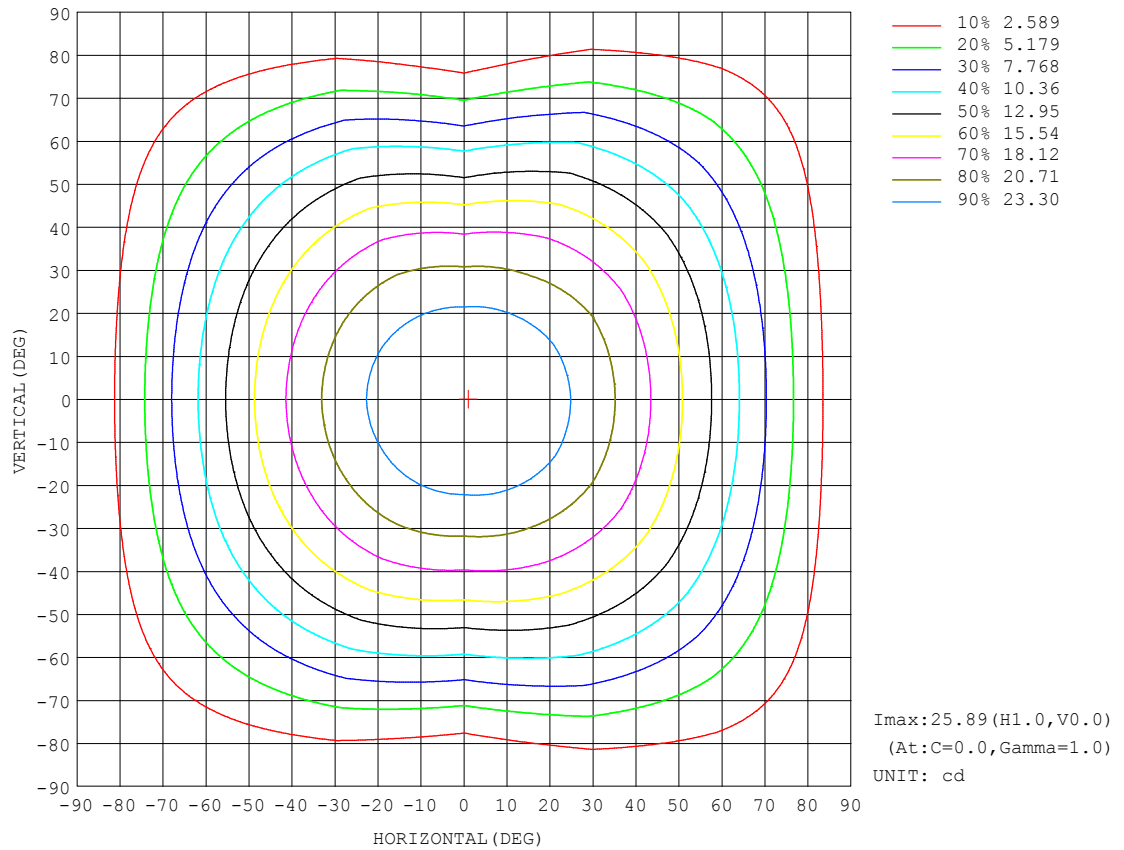
REFLECTANCE										
Ceiling	0.8	0.8	0.8	0.7	0.7	0.7	0.5	0.5	0.5	0
Walls	0.7	0.5	0.3	0.7	0.5	0.3	0.7	0.5	0.3	0
Working plane	0.2	0.2	0.2	0.2	0.2	0.2	0.2	0.2	0.2	0
ROOM INDEX	UTILIZATION FACTORS (PERCENT) $k(RI) \times RCR = 5$									
$k = 0.60$	57	45	38	56	45	38	55	45	38	32
0.80	67	55	48	66	55	48	64	54	47	40
1.00	75	64	57	74	64	56	72	65	56	49
1.25	82	72	65	81	71	64	78	70	63	56
1.50	87	77	70	86	76	70	83	75	69	61
2.00	94	86	79	92	84	78	89	82	77	69
2.50	98	90	84	96	89	83	92	86	81	73
3.00	102	95	89	99	93	88	95	90	86	77
4.00	106	100	95	103	98	94	99	94	91	82
5.00	108	103	99	106	101	97	101	97	94	85
ROOM INDEX	UF (total)									Direct
According to DIN EN 13032-2 2004			Suspended					SHRNOM = 1.25		

C Range: 0 - 360DEG
C Interval: 30.0DEG
Test Speed: HIGH
Temperature:25.3DEG
Operators:LPC
Test Date:2021-12-29

γ Range: 0 - 120DEG
 γ Interval: 1.0DEG
Test System:EVERFINE GO-2000B_V1 SYSTEM V2.0.362
Humidity:65.0%
Test Distance:9.200m [K=1.0000]
Remarks:

ISOCANDELA DIAGRAM

Test:U:24.00V I:0.1929A P:4.630W PF:1.000 Freq:50.00Hz Lamp Flux:74.1676x1 lm		
NAME: SF15-24V-5050-56-SPI4-RGBW(2700)-G	TYPE: 硅胶	WEIGHT:
SPEC.:	DIM.: 21mm*11.5mm	SERIAL No.:2021122907
MFR.: OLYMPIA	SUR.:1*0.0115	Shielding Angle:

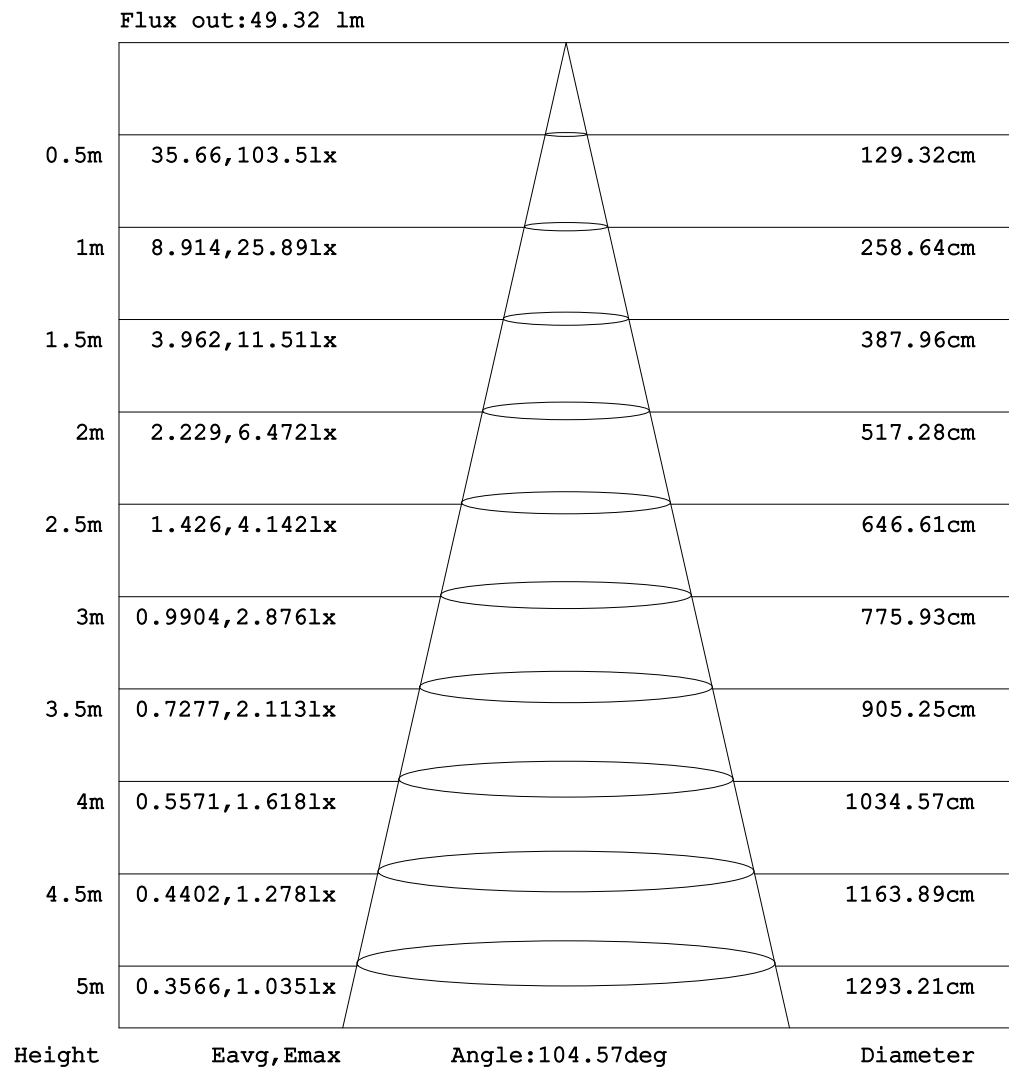


C Range: 0 - 360DEG
C Interval: 30.0DEG
Test Speed: HIGH
Temperature:25.3DEG
Operators:LPC
Test Date:2021-12-29

γ Range: 0 - 120DEG
 γ Interval: 1.0DEG
Test System:EVERFINE GO-2000B_V1 SYSTEM V2.0.362
Humidity:65.0%
Test Distance:9.200m [K=1.0000]
Remarks:

AAI Figure

Test:U:24.00V I:0.1929A P:4.630W PF:1.000 Freq:50.00Hz Lamp Flux:74.1676x1 lm		
NAME: SF15-24V-5050-56-SPI4-RGBW(2700)-G	TYPE:硅胶	WEIGHT:
SPEC.:	DIM.: 21mm*11.5mm	SERIAL No.:2021122907
MFR.: OLYMPIA	SUR.:1*0.0115	Shielding Angle:



Note: The Curves indicate the illuminated area and the average illumination when the luminaire is at different distance.

C Range: 0 - 360DEG
C Interval: 30.0DEG
Test Speed: HIGH
Temperature:25.3DEG
Operators:LPC
Test Date:2021-12-29

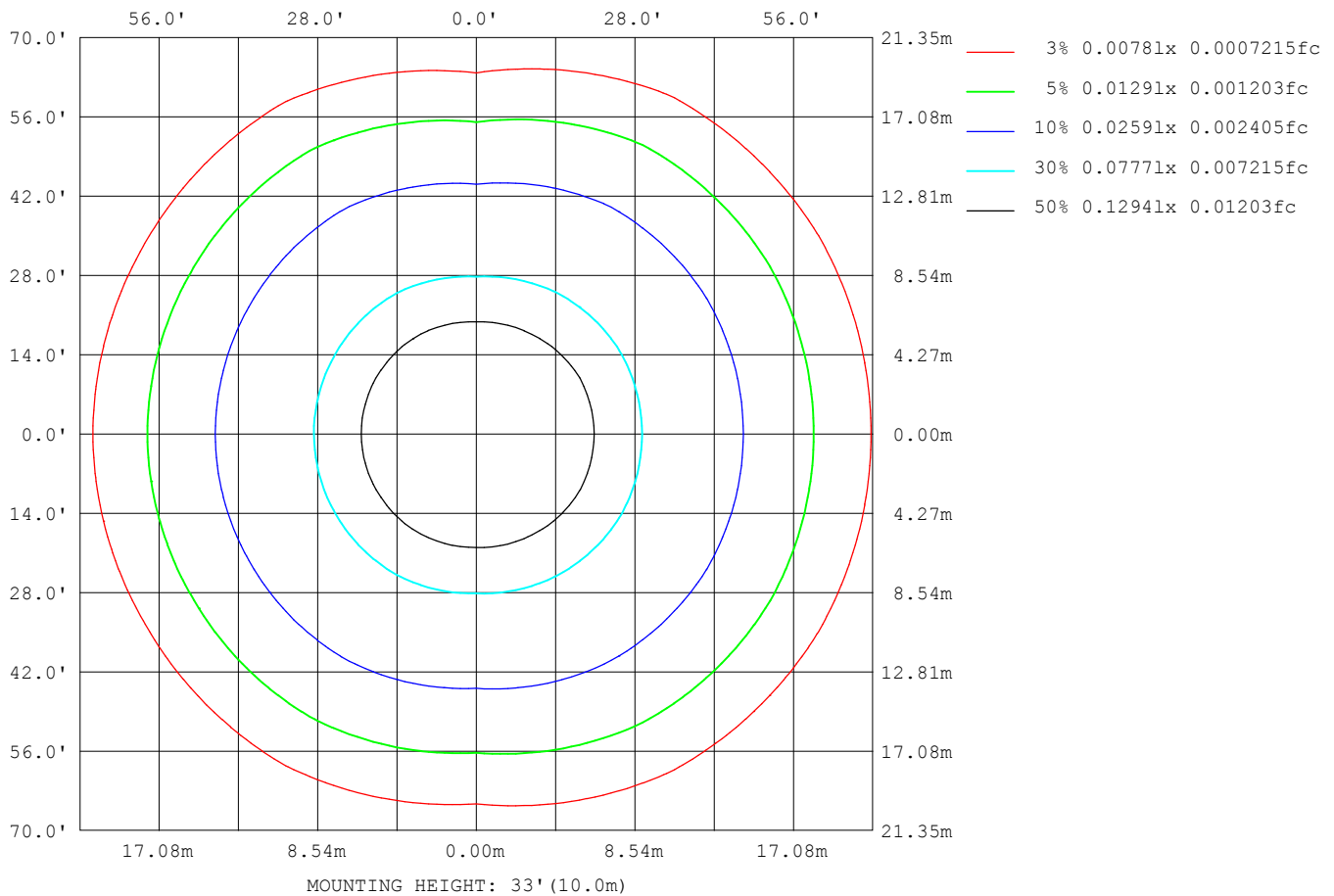
```

Range: 0 - 120DEG
Interval: 1.0DEG
Test System:EVERFINE GO-2000B_V1 SYSTEM V2.0.362
Humidity:65.0%
Test Distance:9.200m [K=1.0000]
Remarks:

```

ISOLUX DIAGRAM

Test:U:24.00V I:0.1929A P:4.630W PF:1.000 Freq:50.00Hz Lamp Flux:74.1676x1 lm		
NAME: SF15-24V-5050-56-SPI4-RGBW(2700)-G	TYPE: 硅胶	WEIGHT:
SPEC.:	DIM.: 21mm*11.5mm	SERIAL No.:2021122907
MFR.: OLYMPIA	SUR.:1*0.0115	Shielding Angle:



C Range: 0 - 360DEG
C Interval: 30.0DEG
Test Speed: HIGH
Temperature:25.3DEG
Operators:LPC
Test Date:2021-12-29

γ Range: 0 - 120DEG
 γ Interval: 1.0DEG
Test System:EVERFINE GO-2000B_V1 SYSTEM V2.0.362
Humidity:65.0%
Test Distance:9.200m [K=1.0000]
Remarks:

LED Avg.L Report

Test:U:24.00V I:0.1929A P:4.630W PF:1.000 Freq:50.00Hz Lamp Flux:74.1676x1 lm		
NAME: SF15-24V-5050-56-SPI4-RGBW(2700)-G	TYPE:硅胶	WEIGHT:
SPEC.:	DIM.: 21mm*11.5mm	SERIAL No.:2021122907
MFR.: OLYMPIA	SUR.:1*0.0115	Shielding Angle:

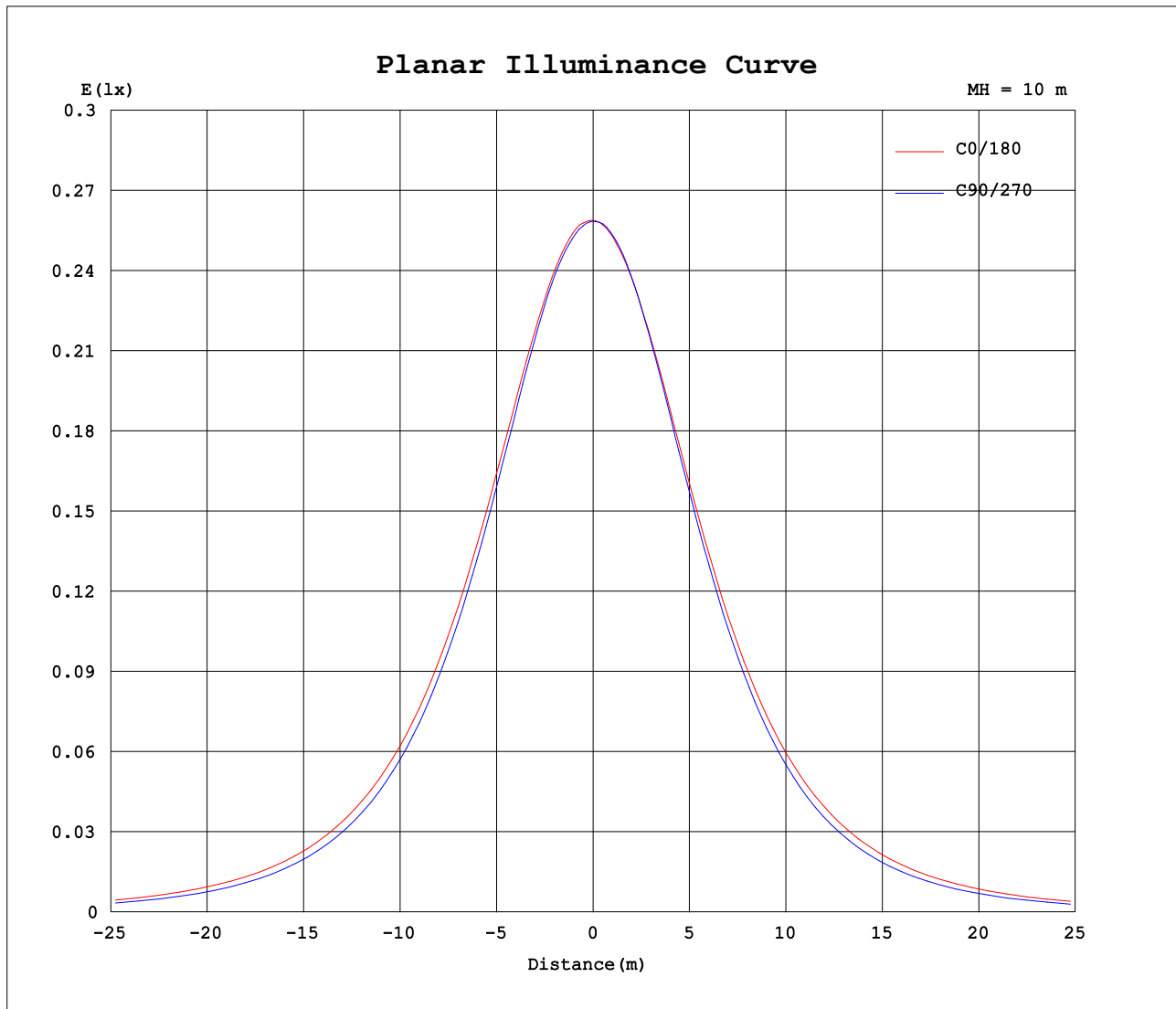
AvgL	cd/m2
L_0~180 (65) av	1954
L_0~180 (75) av	1802
L_0~180 (85) av	1836
L_90~270 (65) av	1539
L_90~270 (75) av	1090
L_90~270 (85) av	238
L_45 (65) av	1953
L_45 (75) av	1804
L_45 (85) av	1707

Standard: GB/T 29293-2012

C Range: 0 - 360DEG
C Interval: 30.0DEG
Test Speed: HIGH
Temperature:25.3DEG
Operators:LPC
Test Date:2021-12-29

γ Range: 0 - 120DEG
γ Interval: 1.0DEG
Test System:EVERFINE GO-2000B_V1 SYSTEM V2.0.362
Humidity:65.0%
Test Distance:9.200m [K=1.0000]
Remarks:

Planar Illuminance Curve



C Range: 0 - 360DEG
C Interval: 30.0DEG
Test Speed: HIGH
Temperature: 25.3DEG
Operators: LPC
Test Date: 2021-12-29

γ Range: 0 - 120DEG
 γ Interval: 1.0DEG
Test System: EVERFINE GO-2000B_V1 SYSTEM V2.0.362
Humidity: 65.0%
Test Distance: 9.200m [K=1.0000]
Remarks:

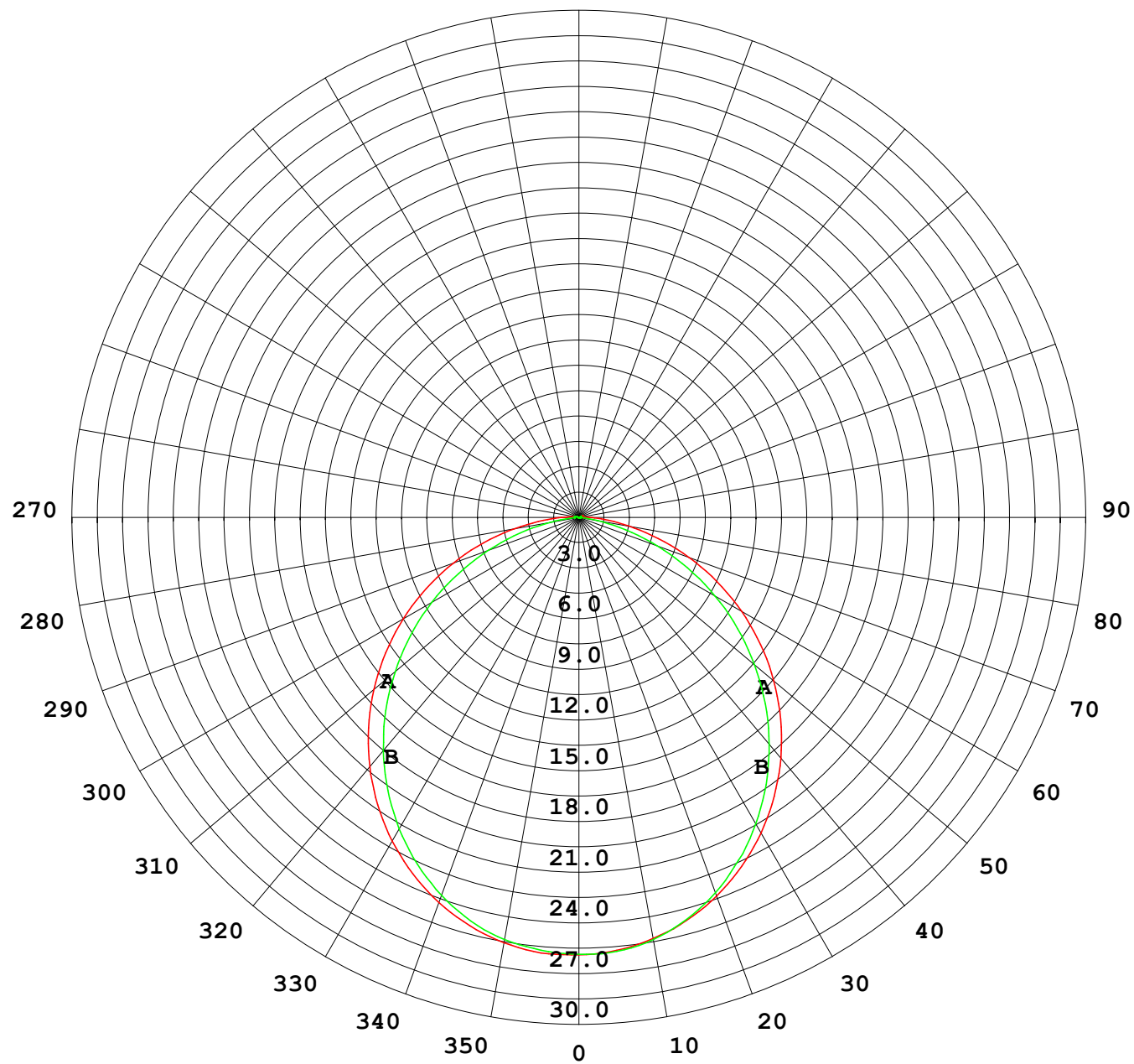
G/C	0.0	30.0	60.0	90.0	120.0	150.0	180.0	210.0	240.0	270.0
0.0	25.89	25.87	25.85	25.85	25.85	25.82	25.89	25.87	25.85	25.85
3.0	25.89	25.86	25.85	25.78	25.80	25.73	25.81	25.84	25.79	25.85
6.0	25.82	25.77	25.77	25.65	25.64	25.57	25.65	25.68	25.64	25.71
9.0	25.63	25.59	25.58	25.44	25.40	25.31	25.40	25.43	25.40	25.48
12.0	25.36	25.32	25.31	25.14	25.08	24.97	25.08	25.08	25.05	25.10
15.0	25.00	24.98	24.91	24.72	24.65	24.57	24.67	24.67	24.60	24.62
18.0	24.58	24.57	24.42	24.20	24.14	24.10	24.21	24.19	24.08	24.06
21.0	24.07	24.07	23.83	23.58	23.56	23.54	23.64	23.60	23.49	23.40
24.0	23.48	23.50	23.18	22.88	22.90	22.93	23.02	22.98	22.84	22.63
27.0	22.82	22.83	22.44	22.11	22.21	22.24	22.31	22.24	22.14	21.84
30.0	22.11	22.10	21.65	21.28	21.45	21.46	21.56	21.51	21.39	20.94
33.0	21.32	21.34	20.81	20.36	20.61	20.65	20.74	20.68	20.58	19.97
36.0	20.47	20.48	19.92	19.39	19.73	19.73	19.85	19.79	19.70	18.97
39.0	19.57	19.56	19.01	18.37	18.79	18.81	18.92	18.85	18.78	17.90
42.0	18.61	18.63	18.05	17.28	17.80	17.83	17.92	17.85	17.80	16.77
45.0	17.61	17.64	17.07	16.16	16.78	16.76	16.88	16.82	16.78	15.61
48.0	16.56	16.59	16.04	15.01	15.70	15.70	15.80	15.73	15.71	14.39
51.0	15.47	15.53	14.97	13.80	14.58	14.57	14.68	14.59	14.60	13.15
54.0	14.35	14.38	13.85	12.57	13.44	13.40	13.52	13.45	13.46	11.89
57.0	13.19	13.25	12.70	11.34	12.24	12.22	12.33	12.24	12.27	10.63
60.0	12.00	12.05	11.55	10.05	11.04	10.99	11.11	11.01	11.07	9.306
63.0	10.79	10.84	10.37	8.730	9.805	9.735	9.861	9.779	9.826	8.000
66.0	9.568	9.626	9.176	7.424	8.558	8.500	8.620	8.523	8.585	6.678
69.0	8.317	8.384	7.945	6.122	7.286	7.218	7.348	7.231	7.313	5.361
72.0	7.081	7.137	6.734	4.840	6.046	5.971	6.102	5.995	6.056	4.115
75.0	5.854	5.917	5.518	3.615	4.804	4.766	4.871	4.753	4.801	2.874
78.0	4.628	4.681	4.311	2.449	3.613	3.600	3.720	3.577	3.585	1.757
81.0	3.476	3.509	3.165	1.414	2.506	2.545	2.675	2.536	2.454	0.8719
84.0	2.421	2.434	2.090	0.5106	1.571	1.706	1.801	1.666	1.474	0.1976
87.0	1.616	1.551	1.209	0.2651	0.8916	1.064	1.114	1.007	0.7522	0.1007
90.0	1.042	0.9536	0.6748	0.2472	0.5285	0.6324	0.6221	0.5690	0.3511	0.0905
93.0	0.6494	0.5821	0.4378	0.2387	0.4424	0.4419	0.3411	0.3521	0.2789	0.0905
96.0	0.4079	0.3717	0.3921	0.2463	0.4403	0.4283	0.2761	0.3116	0.2682	0.0905
99.0	0.3068	0.3469	0.3771	0.2564	0.4373	0.4147	0.2755	0.2997	0.2576	0.0954
102.0	0.2965	0.3629	0.3621	0.2682	0.4024	0.4010	0.2748	0.2941	0.2469	0.1206
105.0	0.2520	0.3703	0.3570	0.2279	0.3568	0.3548	0.2741	0.2885	0.2363	0.1296
108.0	0.2076	0.3259	0.3568	0.1877	0.3682	0.2922	0.2734	0.2901	0.2565	0.1333
111.0	0.1631	0.2561	0.3015	0.1475	0.3704	0.2296	0.2727	0.2917	0.2815	0.1370
114.0	0.1186	0.1863	0.2110	0.1073	0.3732	0.1669	0.2721	0.2933	0.2915	0.1407
117.0	0.0741	0.1164	0.1206	0.0670	0.3760	0.1043	0.1942	0.2949	0.2471	0.1508
120.0	0.0297	0.0466	0.0301	0.0268	0.3870	0.0417	0.0777	0.2965	0.0988	0.1809
G/C	300.0	330.0								
0.0	25.85	25.82								
3.0	25.82	25.84								
6.0	25.72	25.79								
9.0	25.53	25.62								
12.0	25.20	25.35								
15.0	24.77	24.98								
18.0	24.26	24.51								
21.0	23.66	23.91								
24.0	22.97	23.36								
27.0	22.18	22.71								
30.0	21.37	22.06								
33.0	20.51	21.27								
36.0	19.68	20.44								
39.0	18.84	19.55								
42.0	17.97	18.59								
45.0	17.03	17.61								
48.0	16.02	16.58								
51.0	14.95	15.50								
54.0	13.86	14.40								
57.0	12.73	13.24								
60.0	11.57	12.05								
63.0	10.39	10.87								
66.0	9.193	9.653								
69.0	7.977	8.412								
72.0	6.735	7.171								
75.0	5.515	5.930								
78.0	4.303	4.683								
81.0	3.137	3.541								
84.0	2.042	2.401								
87.0	1.119	1.556								
90.0	0.5266	0.9213								

```

γ Range: 0 - 120DEG
γ Interval: 1.0DEG
Test System:EVERFINE GO-2000B_V1 SYSTEM V2.0.362
Humidity:65.0%
Test Distance:9.200m [K=1.0000]
Remarks:

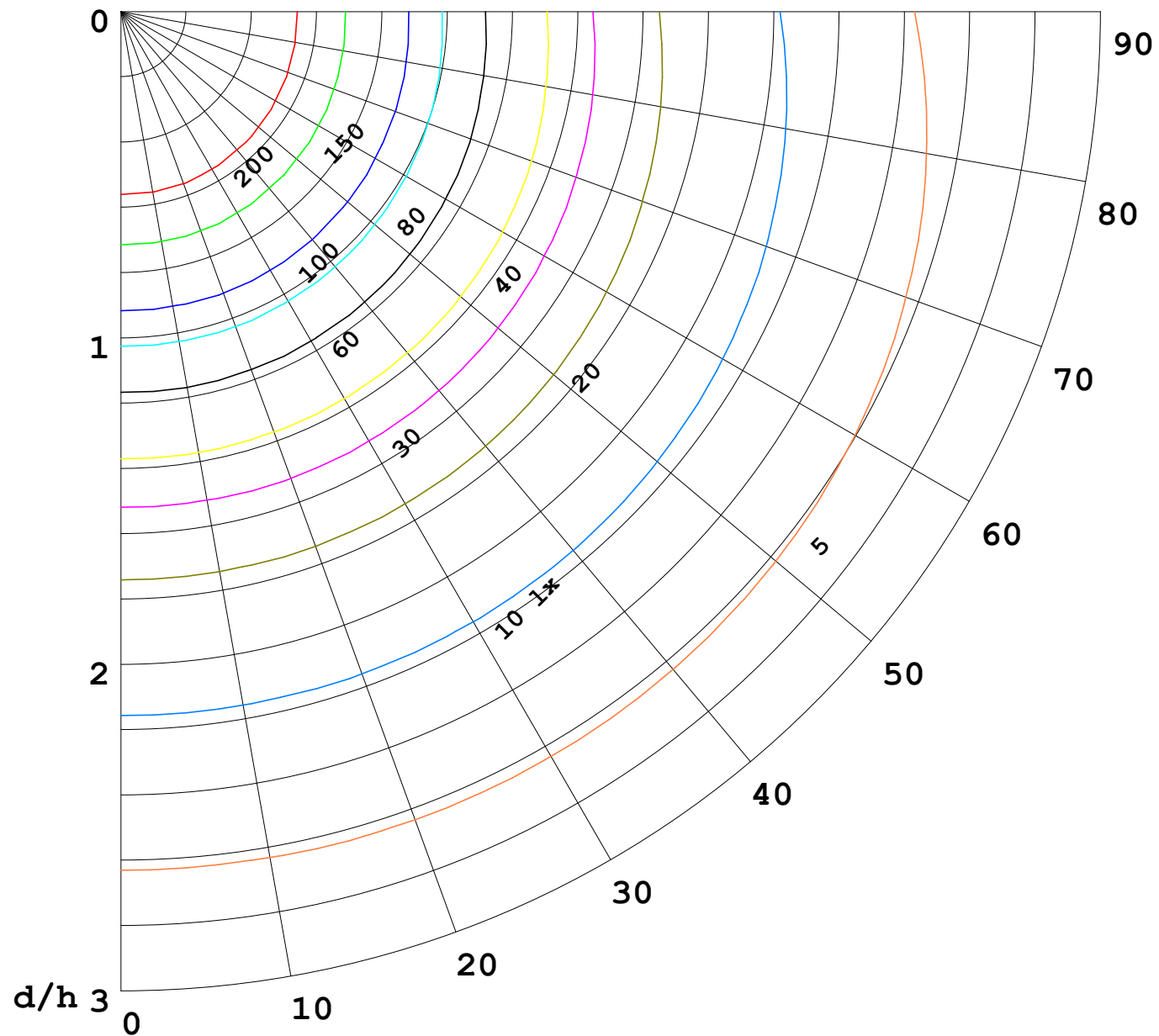
```


I (cd)



1000 lm

$\kappa = 1$



F = 5000 lm
 K = 0.7
 Hcc = 0.0 m
 Hfc = 0.0 m
 Eave = 100 lx

	Pcc	Pw	Pfc
—	70	50	30
—	50	30	20

