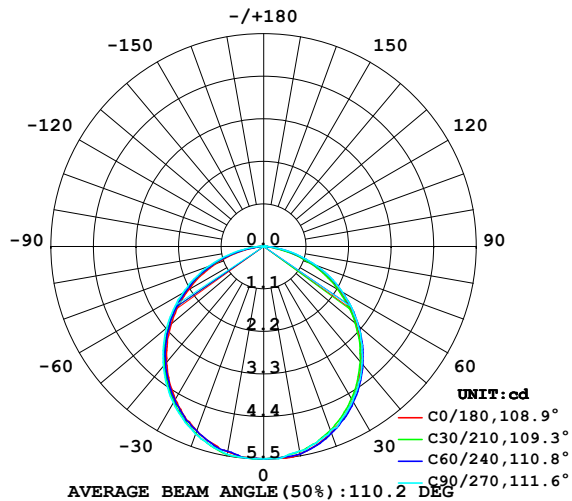


LUMINAIRE PHOTOMETRIC TEST REPORT

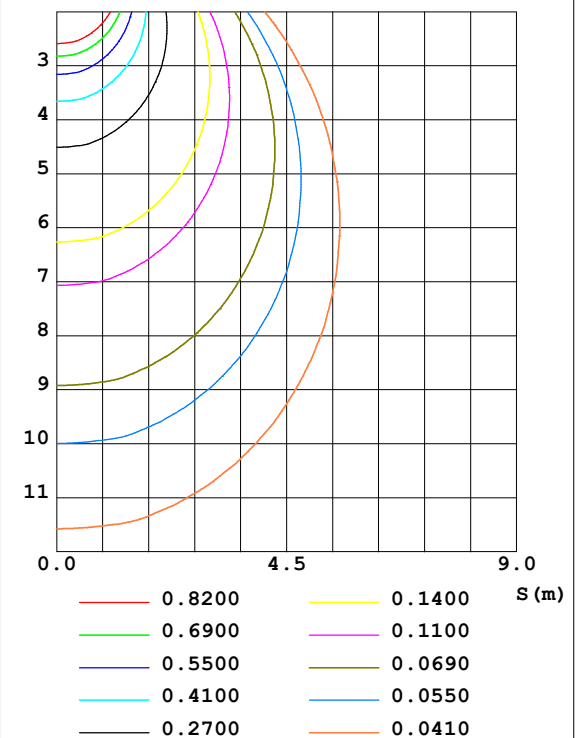
Test:U:12.00V I:0.4843A P:5.812W PF:1.000 Lamp Flux:15.2556x1 lm		
NAME: SF15-12V-5050-60-W12-SPI4-3000K-B	TYPE: 硅胶	WEIGHT:
DIM.: 21MM*11.5MM	SPEC.:	SERIAL No.:20230223
MFR.: OLYMPIA	SUR.:0.5*0.018	PROTECTION ANGLE:

DATA OF LAMP		PHOTOMETRIC DATA				Eff: 2.62 lm/W
MODEL	5050	I _{max} (cd)	5.506	S/MH (C0/180)	1.24	
NOMINAL POWER (W)	4.25	LOR (%)	100.0	S/MH (C90/270)	1.24	
RATED VOLTAGE (V)	12	TOTAL FLUX (lm)	15.255	η UP, DN (C0-180)	0.3, 49.6	
NOMINAL FLUX (lm)	15.2556	CIE CLASS	DIRECT	η UP, DN (C180-360)	0.1, 50.0	
LAMPS INSIDE	1	η up (%)	0.4	CIBSE SHR NOM	1.25	
TEST VOLTAGE (V)	12.0	η down (%)	99.6	CIBSE SHR MAX	1.35	

LUMINOUS INTENSITY DISTRIBUTION DIAGRAM



C0 PLANE ISOLUX DIAGRAM (UNIT:lx)



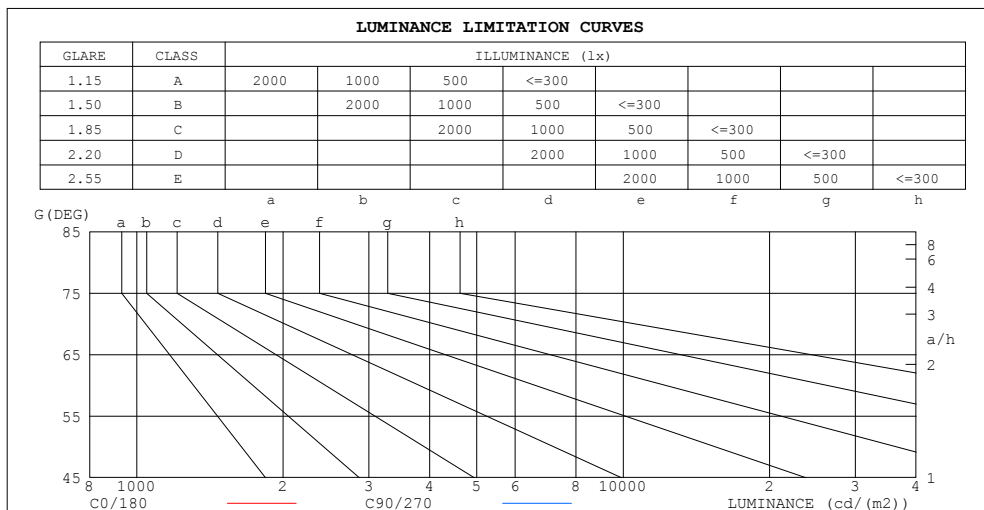
C Range: 0 - 360DEG
C Interval: 30.0DEG
Test Speed: HIGH
Temperature: 25.3DEG
Operators: WFW
Test Date: 2023-02-23

γ Range: 0 - 180DEG
γ Interval: 1.0DEG
Test System: EVERFINE GO-2000B_V1 SYSTEM V2.0.269
Humidity: 65.0%
Test Distance: 10.800m [K=1.0000]
Remarks:

ZONAL FLUX DIAGRAM
AND LUMINANCE LIMITATION CURVES

ZONAL FLUX DIAGRAM:

γ	C0	C45	C90	C135	C180	C225	C270	C315	γ	Φ zone	Φ total	%lum, lamp
10	5.444	5.413	5.374	5.402	5.388	5.423	5.451	5.402	0- 10	0.5205	0.5205	3.41,3.41
20	5.119	5.098	5.076	5.094	5.069	5.111	5.160	5.084	10- 20	1.490	2.011	13.2,13.2
30	4.599	4.595	4.605	4.602	4.577	4.619	4.669	4.599	20- 30	2.247	4.258	27.9,27.9
40	3.921	3.941	3.954	3.965	3.912	3.972	4.038	3.944	30- 40	2.688	6.946	45.5,45.5
50	3.131	3.148	3.192	3.186	3.129	3.200	3.277	3.162	40- 50	2.759	9.705	63.6,63.6
60	2.252	2.272	2.340	2.320	2.250	2.341	2.425	2.292	50- 60	2.458	12.16	79.7,79.7
70	1.338	1.361	1.440	1.409	1.329	1.430	1.517	1.385	60- 70	1.842	14.01	91.8,91.8
80	0.4510	0.4607	0.5394	0.4918	0.4147	0.5192	0.6101	0.4846	70- 80	0.9883	14.99	98.3,98.3
90	0.0139	0.0174	0.0416	0.0243	0	0.0001	0.0624	0.0000	80- 90	0.1991	15.19	99.6,99.6
100	0	0.0104	0.0346	0.0208	0	0	0.0346	0	90-100	0.0141	15.21	99.7,99.7
110	0	0.0104	0.0139	0.0208	0	0.0035	0.0346	0	100-110	0.0103	15.22	99.7,99.7
120	0	0.0104	0.0139	0.0208	0	0.0035	0.0277	0	110-120	0.0090	15.23	99.8,99.8
130	0	0.0104	0.0139	0.0173	0	0.0035	0.0277	0	120-130	0.0081	15.23	99.9,99.9
140	0	0.0104	0.0139	0.0173	0	0	0.0277	0.0069	130-140	0.0069	15.24	99.9,99.9
150	0	0.0139	0.0139	0.0207	0	0	0.0277	0.0069	140-150	0.0062	15.25	99.9,99.9
160	0	0.0139	0.0139	0.0173	0	0	0.0277	0.0035	150-160	0.0045	15.25	100,100
170	0	0.0139	0.0139	0.0208	0	0	0.0277	0.0035	160-170	0.0028	15.25	100,100
180	0	0.0104	0	0.0208	0	0	0.0069	0.0035	170-180	0.0009	15.26	100,100
DEG	LUMINOUS INTENSITY:cd									UNIT:lm		



LUMINANCE cd/(m2)		
G (DEG)	C0/180	C90/270
85	15	19
80	26	31
75	34	38
70	39	42
65	43	45
60	45	47
55	47	48
50	49	50
45	50	51

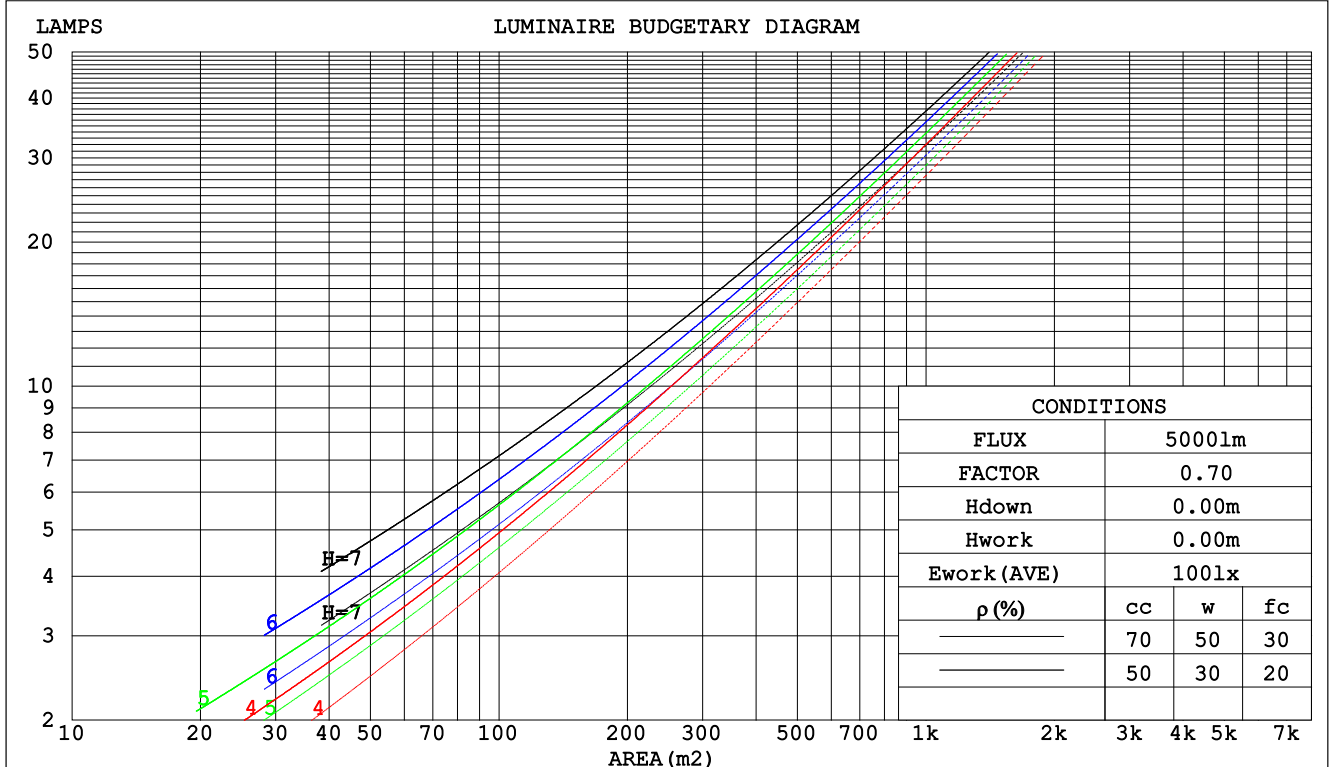
C Range: 0 - 360DEG
C Interval: 30.0DEG
Test Speed: HIGH
Temperature:25.3DEG
Operators:WFW
Test Date:2023-02-23

γ Range: 0 - 180DEG
 γ Interval: 1.0DEG
Test System:EVERFINE GO-2000B_V1 SYSTEM V2.0.269
Humidity:65.0%
Test Distance:10.800m [K=1.0000]
Remarks:

CU AND LUMINAIRE BUDGETARY ESTIMATE DIAGRAM

Test:U:12.00V I:0.4843A P:5.812W PF:1.000 Lamp Flux:15.2556x1 lm		
NAME: SF15-12V-5050-60-W12-SPI4-3000K-B	TYPE: 硅胶	WEIGHT:
DIM.: 21MM*11.5MM	SPEC.:	SERIAL No.:20230223
MFR.: OLYMPIA	SUR.:0.5*0.018	PROTECTION ANGLE:

pcc	80%			70%			50%			30%			10%			0
pw	50%	30%	10%	50%	30%	10%	50%	30%	10%	50%	30%	10%	50%	30%	10%	0
pfc	20%			20%			20%			20%			20%			0
RCR	RCR:Room Cavity Ratio						Coefficients of Utilization(CU)									
0.0	1.19	1.19	1.19	1.16	1.16	1.16	1.11	1.11	1.11	1.06	1.06	1.06	1.02	1.02	1.02	.00
1.0	1.04	1.00	.96	1.02	.98	.95	.98	.95	.92	.94	.91	.89	.90	.88	.86	.84
2.0	.91	.84	.79	.89	.83	.78	.85	.80	.76	.82	.78	.74	.79	.75	.72	.70
3.0	.80	.72	.65	.78	.71	.65	.75	.69	.64	.73	.67	.62	.70	.65	.61	.59
4.0	.71	.62	.55	.70	.61	.55	.67	.60	.54	.65	.58	.53	.62	.57	.53	.51
5.0	.63	.54	.48	.62	.54	.47	.60	.53	.47	.58	.51	.46	.56	.50	.46	.44
6.0	.57	.48	.42	.56	.48	.42	.54	.47	.41	.52	.46	.41	.51	.45	.40	.38
7.0	.52	.43	.37	.51	.43	.37	.49	.42	.36	.48	.41	.36	.46	.40	.36	.34
8.0	.47	.39	.33	.46	.38	.33	.45	.38	.33	.44	.37	.32	.43	.37	.32	.30
9.0	.43	.35	.30	.43	.35	.29	.42	.34	.29	.40	.34	.29	.39	.33	.29	.27
10.0	.40	.32	.27	.39	.32	.27	.38	.31	.27	.37	.31	.26	.37	.31	.26	.25



C Range: 0 - 360DEG
C Interval: 30.0DEG
Test Speed: HIGH
Temperature:25.3DEG
Operators:WFW
Test Date:2023-02-23

γ Range: 0 - 180DEG
γ Interval: 1.0DEG
Test System:EVERFINE GO-2000B_V1 SYSTEM V2.0.269
Humidity:65.0%
Test Distance:10.800m [K=1.0000]
Remarks:

WEC AND CCEC

Test:U:12.00V I:0.4843A P:5.812W PF:1.000 Lamp Flux:15.2556x1 lm		
NAME: SF15-12V-5050-60-W12-SPI4-3000K-B	TYPE: 硅胶	WEIGHT:
DIM.: 21MM*11.5MM	SPEC.:	SERIAL No.:20230223
MFR.: OLYMPIA	SUR.:0.5*0.018	PROTECTION ANGLE:

pcc	80%			70%			50%			30%			10%			0	
pw	50%	30%	10%	50%	30%	10%	50%	30%	10%	50%	30%	10%	50%	30%	10%	0	
pfc	20%			20%			20%			20%			20%			0	
RCR	RCR:Room Cavity Ratio						Wall Exitance Coefficients(WEC)										
0.0																	
1.0	.300	.171	.054	.293	.167	.053	.280	.160	.051	.267	.154	.049	.256	.148	.048		
2.0	.285	.156	.048	.279	.154	.047	.267	.149	.046	.256	.144	.045	.246	.139	.044		
3.0	.265	.141	.042	.260	.139	.042	.249	.135	.041	.240	.131	.040	.231	.128	.040		
4.0	.246	.128	.038	.241	.126	.037	.232	.123	.037	.223	.120	.036	.215	.117	.036		
5.0	.228	.116	.034	.223	.115	.033	.215	.112	.033	.207	.109	.033	.200	.107	.032		
6.0	.212	.106	.030	.208	.105	.030	.200	.103	.030	.193	.100	.030	.187	.098	.029		
7.0	.197	.097	.028	.194	.096	.027	.187	.095	.027	.181	.093	.027	.175	.091	.027		
8.0	.184	.090	.025	.181	.089	.025	.175	.088	.025	.170	.086	.025	.164	.084	.025		
9.0	.173	.084	.023	.170	.083	.023	.165	.081	.023	.160	.080	.023	.155	.079	.023		
10.0	.163	.078	.022	.160	.077	.022	.155	.076	.021	.151	.075	.021	.146	.074	.021		

pcc	80%			70%			50%			30%			10%			0
pw	50%	30%	10%	50%	30%	10%	50%	30%	10%	50%	30%	10%	50%	30%	10%	0
pfc	20%			20%			20%			20%			20%			0
RCR	RCR:Room Cavity Ratio						Ceiling Cavity Exitance Coefficients(CCEC)									
0.0	.194	.194	.194	.165	.165	.165	.113	.113	.113	.065	.065	.065	.021	.021	.021	
1.0	.183	.159	.138	.156	.137	.119	.107	.094	.082	.062	.054	.048	.020	.018	.015	
2.0	.175	.135	.102	.150	.116	.088	.102	.080	.061	.059	.047	.036	.019	.015	.012	
3.0	.167	.117	.078	.143	.101	.068	.098	.070	.048	.057	.041	.028	.018	.013	.009	
4.0	.159	.104	.062	.137	.090	.054	.094	.063	.038	.054	.037	.022	.017	.012	.007	
5.0	.152	.094	.051	.130	.081	.044	.090	.057	.031	.052	.033	.019	.017	.011	.006	
6.0	.145	.085	.043	.124	.074	.037	.086	.052	.026	.050	.030	.016	.016	.010	.005	
7.0	.138	.078	.037	.119	.068	.032	.082	.048	.023	.048	.028	.013	.015	.009	.004	
8.0	.132	.073	.032	.113	.063	.028	.078	.044	.020	.046	.026	.012	.015	.009	.004	
9.0	.126	.068	.029	.108	.059	.025	.075	.041	.018	.044	.024	.011	.014	.008	.003	
10.0	.120	.063	.026	.103	.055	.023	.072	.039	.016	.042	.023	.010	.014	.008	.003	

C Range: 0 - 360DEG
 C Interval: 30.0DEG
 Test Speed: HIGH
 Temperature:25.3DEG
 Operators:WFW
 Test Date:2023-02-23

γ Range: 0 - 180DEG
 γ Interval: 1.0DEG
 Test System:EVERFINE GO-2000B_V1 SYSTEM V2.0.269
 Humidity:65.0%
 Test Distance:10.800m [K=1.0000]
 Remarks:

Uncorrected UGR Table

Test:U:12.00V I:0.4843A P:5.812W PF:1.000 Lamp Flux:15.2556x1 lm										
NAME: SF15-12V-5050-60-W12-SPI4-3000K-B					TYPE: 硅胶			WEIGHT:		
DIM.: 21MM*11.5MM					SPEC.:			SERIAL No.:20230223		
MFR.: OLYMPIA					SUR.:0.5*0.018			PROTECTION ANGLE:		
ceiling/cavity	0.7	0.7	0.5	0.5	0.3	0.7	0.7	0.5	0.5	0.3
walls	0.5	0.3	0.5	0.3	0.3	0.5	0.3	0.5	0.3	0.3
working plane	0.2	0.2	0.2	0.2	0.2	0.2	0.2	0.2	0.2	0.2
Room dimensions	Viewed crosswise					Viewed endwise				
x = 2H y = 2H	2.1	3.6	2.4	3.8	4.0	2.4	3.9	2.6	4.1	4.3
3H	3.5	4.9	3.8	5.1	5.3	3.8	5.2	4.1	5.5	5.7
4H	4.0	5.3	4.3	5.5	5.8	4.4	5.7	4.7	6.0	6.2
6H	4.2	5.5	4.6	5.7	6.0	4.7	6.0	5.1	6.3	6.5
8H	4.3	5.5	4.6	5.7	6.0	4.8	6.0	5.2	6.3	6.6
12H	4.3	5.4	4.6	5.7	6.0	4.8	6.0	5.2	6.3	6.6
4H 2H	2.7	4.0	3.0	4.3	4.5	2.9	4.2	3.2	4.5	4.8
3H	4.2	5.4	4.6	5.7	6.0	4.6	5.7	4.9	6.0	6.3
4H	4.8	5.9	5.2	6.2	6.5	5.2	6.3	5.6	6.6	7.0
6H	5.1	6.1	5.6	6.4	6.8	5.7	6.6	6.1	7.0	7.4
8H	5.2	6.1	5.6	6.5	6.9	5.8	6.7	6.2	7.1	7.5
12H	5.2	6.0	5.7	6.4	6.8	5.9	6.7	6.3	7.1	7.5
8H 4H	5.0	5.9	5.4	6.3	6.7	5.4	6.3	5.8	6.7	7.1
6H	5.5	6.2	5.9	6.6	7.0	6.0	6.7	6.5	7.1	7.6
8H	5.6	6.2	6.0	6.6	7.1	6.2	6.8	6.7	7.3	7.7
12H	5.6	6.1	6.1	6.6	7.1	6.3	6.8	6.8	7.3	7.8
12H 4H	5.0	5.8	5.5	6.2	6.6	5.4	6.2	5.8	6.6	7.0
6H	5.5	6.1	6.0	6.6	7.0	6.0	6.7	6.5	7.1	7.5
8H	5.6	6.2	6.1	6.6	7.1	6.2	6.8	6.7	7.2	7.7
Variations with the observer position at spacings:										
S = 1.0H	+ 0.2 / - 0.2					+ 0.2 / - 0.2				
1.5H	+ 0.1 / - 0.3					+ 0.2 / - 0.3				
2.0H	+ 0.3 / - 0.2					+ 0.2 / - 0.3				

CIE Pub.117 Corrected 15.26 lm Total Lamp Luminous Flux. (8log(F/F0) = -14.5)

C Range: 0 - 360DEG
 C Interval: 30.0DEG
 Test Speed: HIGH
 Temperature:25.3DEG
 Operators:WFW
 Test Date:2023-02-23

γ Range: 0 - 180DEG
 γ Interval: 1.0DEG
 Test System:EVERFINE GO-2000B_V1 SYSTEM V2.0.269
 Humidity:65.0%
 Test Distance:10.800m [K=1.0000]
 Remarks:

UTILIZATION FACTORS TABLE

Test:U:12.00V I:0.4843A P:5.812W PF:1.000 Lamp Flux:15.2556x1 lm		
NAME: SF15-12V-5050-60-W12-SPI4-3000K-B	TYPE: 硅胶	WEIGHT:
DIM.: 21MM*11.5MM	SPEC.:	SERIAL No.:20230223
MFR.: OLYMPIA	SUR.:0.5*0.018	PROTECTION ANGLE:

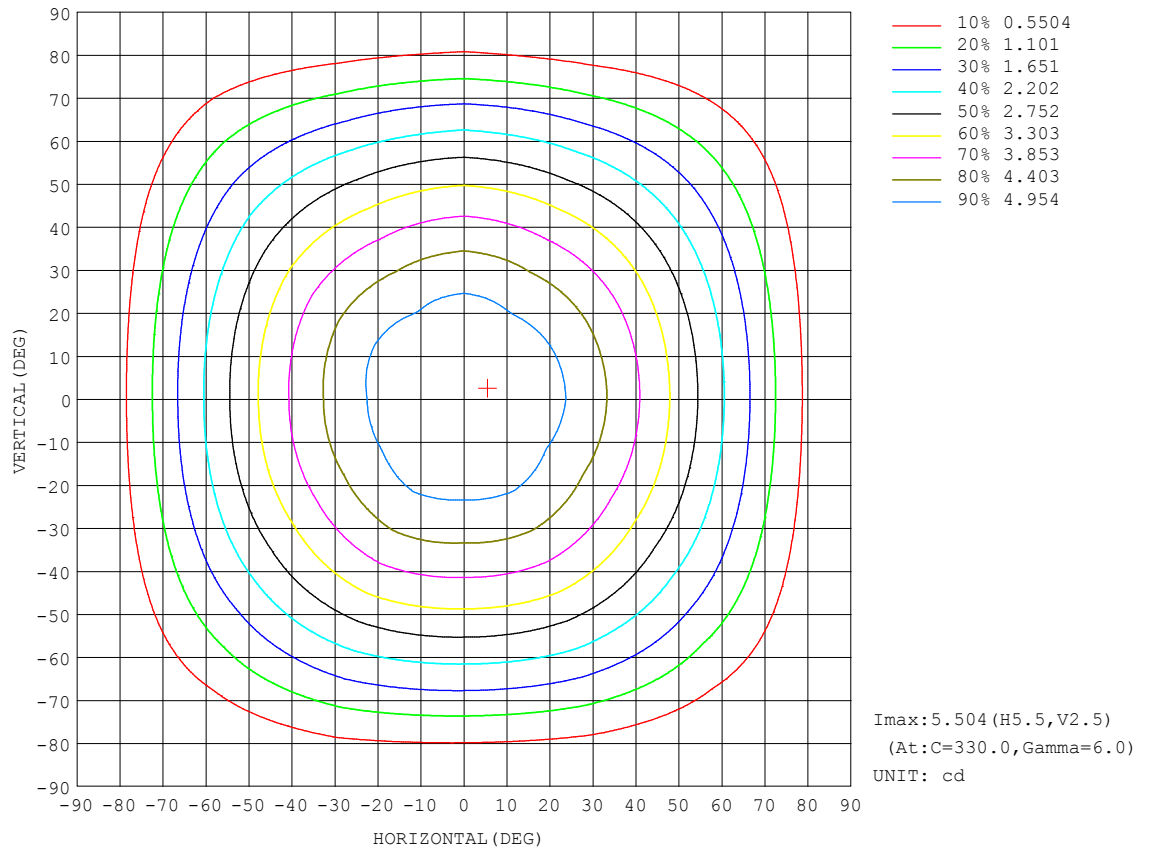
REFLECTANCE										
Ceiling	0.8	0.8	0.8	0.7	0.7	0.7	0.5	0.5	0.5	0
Walls	0.7	0.5	0.3	0.7	0.5	0.3	0.7	0.5	0.3	0
Working plane	0.2	0.2	0.2	0.2	0.2	0.2	0.2	0.2	0.2	0
ROOM INDEX	UTILIZATION FACTORS (PERCENT) $k(RI) \times RCR = 5$									
$k = 0.60$	58	46	40	57	46	39	56	46	39	33
0.80	68	57	49	67	56	49	65	55	49	42
1.00	77	66	58	75	65	58	73	66	57	50
1.25	84	73	66	82	73	66	79	71	65	58
1.50	89	79	72	87	78	71	84	76	70	63
2.00	95	87	81	94	86	80	90	84	78	71
2.50	99	92	86	97	90	85	93	88	83	75
3.00	103	96	90	100	94	89	96	91	87	79
4.00	107	101	96	104	99	95	100	96	92	83
5.00	109	104	100	106	102	99	102	99	96	86
ROOM INDEX	UF(total)									Direct
According to DIN EN 13032-2 2004			Suspended					SHRNM = 1.25		

C Range: 0 - 360DEG
 C Interval: 30.0DEG
 Test Speed: HIGH
 Temperature:25.3DEG
 Operators:WFW
 Test Date:2023-02-23

γ Range: 0 - 180DEG
 γ Interval: 1.0DEG
 Test System:EVERFINE GO-2000B_V1 SYSTEM V2.0.269
 Humidity:65.0%
 Test Distance:10.800m [K=1.0000]
 Remarks:

ISOCANDELA DIAGRAM

Test:U:12.00V I:0.4843A P:5.812W PF:1.000 Lamp Flux:15.2556x1 lm		
NAME: SF15-12V-5050-60-W12-SPI4-3000K-B	TYPE: 硅胶	WEIGHT:
DIM.: 21MM*11.5MM	SPEC.:	SERIAL No.:20230223
MFR.: OLYMPIA	SUR.:0.5*0.018	PROTECTION ANGLE:

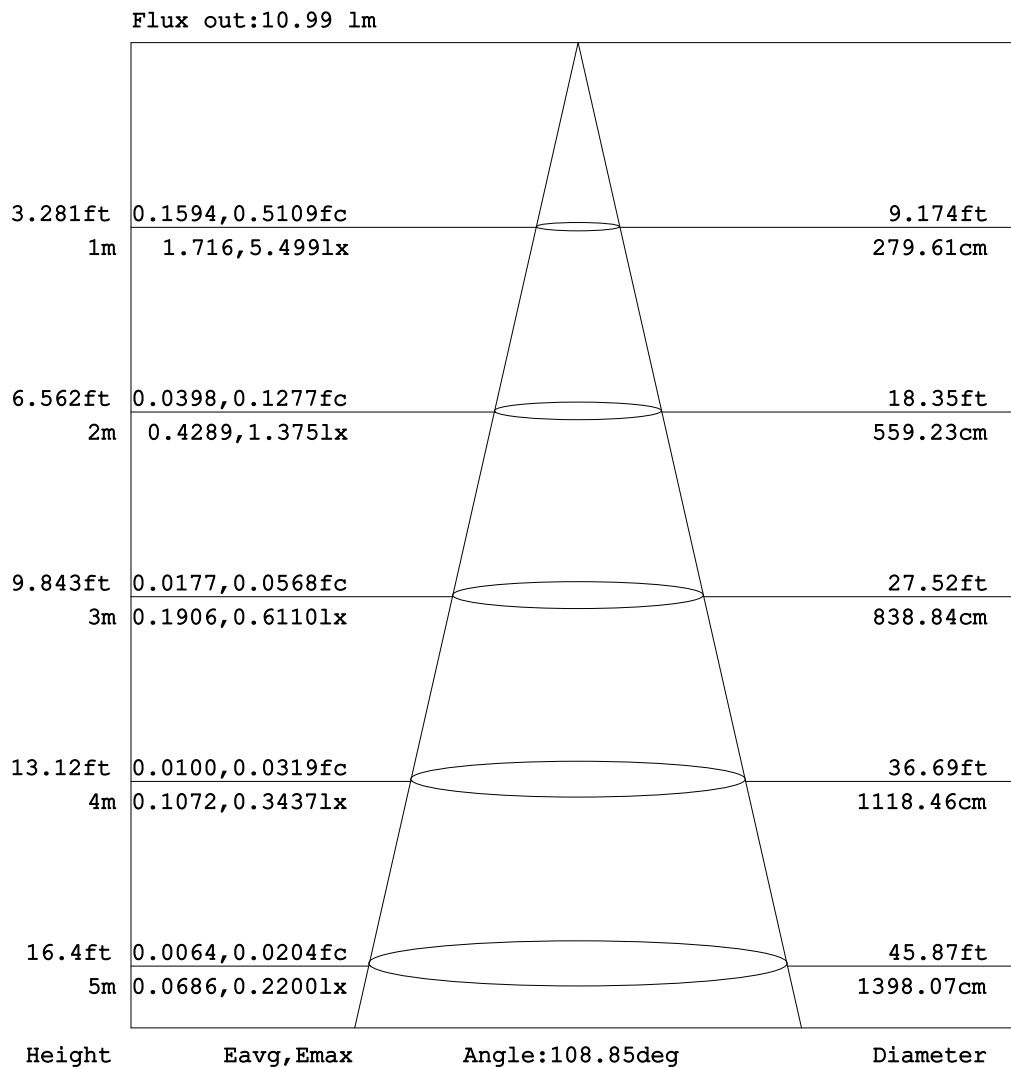


C Range: 0 - 360DEG
C Interval: 30.0DEG
Test Speed: HIGH
Temperature:25.3DEG
Operators:WFW
Test Date:2023-02-23

γ Range: 0 - 180DEG
 γ Interval: 1.0DEG
Test System:EVERFINE GO-2000B_V1 SYSTEM V2.0.269
Humidity:65.0%
Test Distance:10.800m [K=1.0000]
Remarks:

AAI Figure

Test:U:12.00V I:0.4843A P:5.812W PF:1.000 Lamp Flux:15.2556x1 lm		
NAME: SF15-12V-5050-60-W12-SPI4-3000K-B	TYPE: 硅胶	WEIGHT:
DIM.: 21MM*11.5MM	SPEC.:	SERIAL No.:20230223
MFR.: OLYMPIA	SUR.:0.5*0.018	PROTECTION ANGLE:



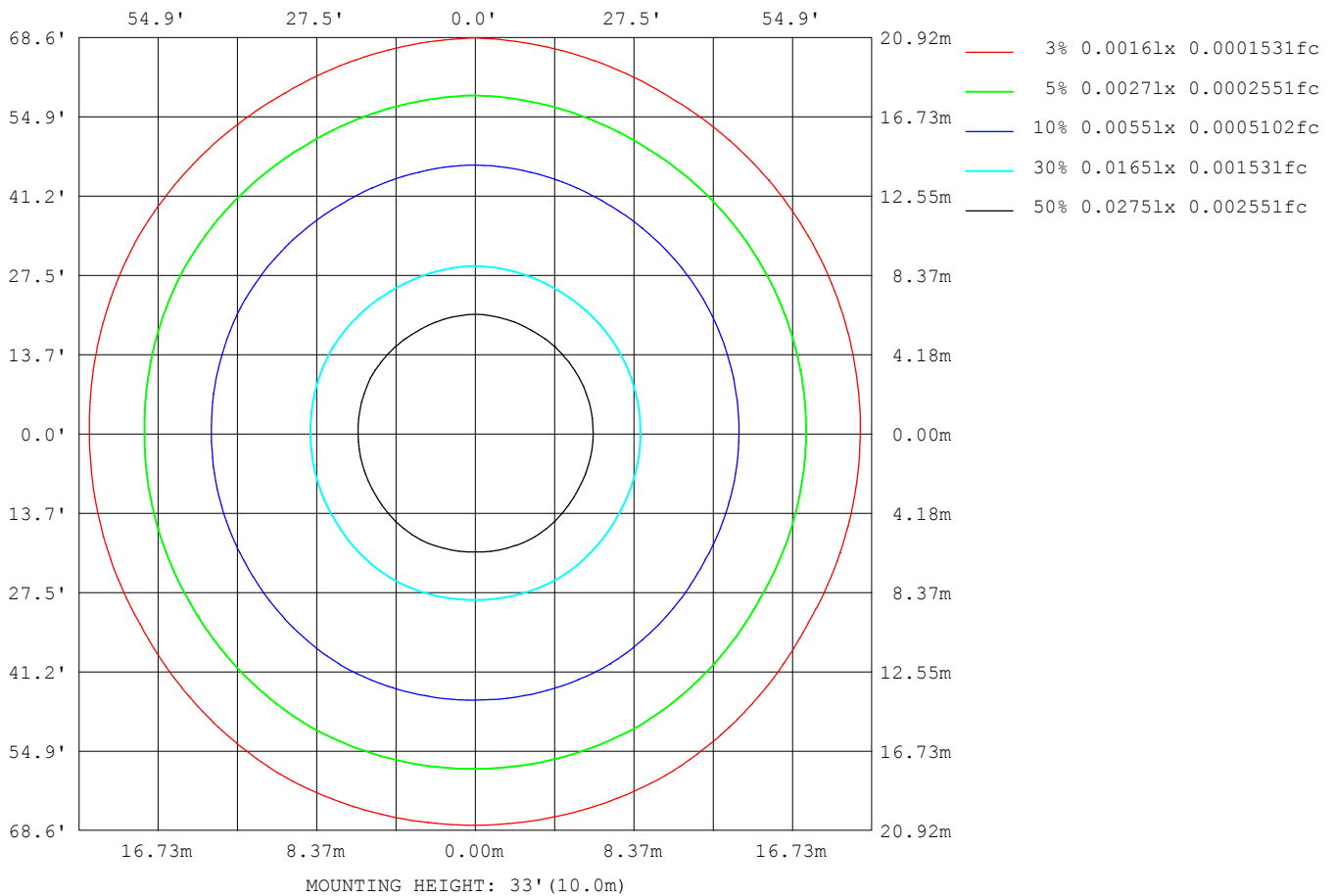
Note:The Curves indicate the illuminated area and the average illumination when the luminaire is at different distance.

C Range: 0 - 360DEG
C Interval: 30.0DEG
Test Speed: HIGH
Temperature:25.3DEG
Operators:WFW
Test Date:2023-02-23

γ Range: 0 - 180DEG
γ Interval: 1.0DEG
Test System:EVERFINE GO-2000B_V1 SYSTEM V2.0.269
Humidity:65.0%
Test Distance:10.800m [K=1.0000]
Remarks:

ISOLUX DIAGRAM

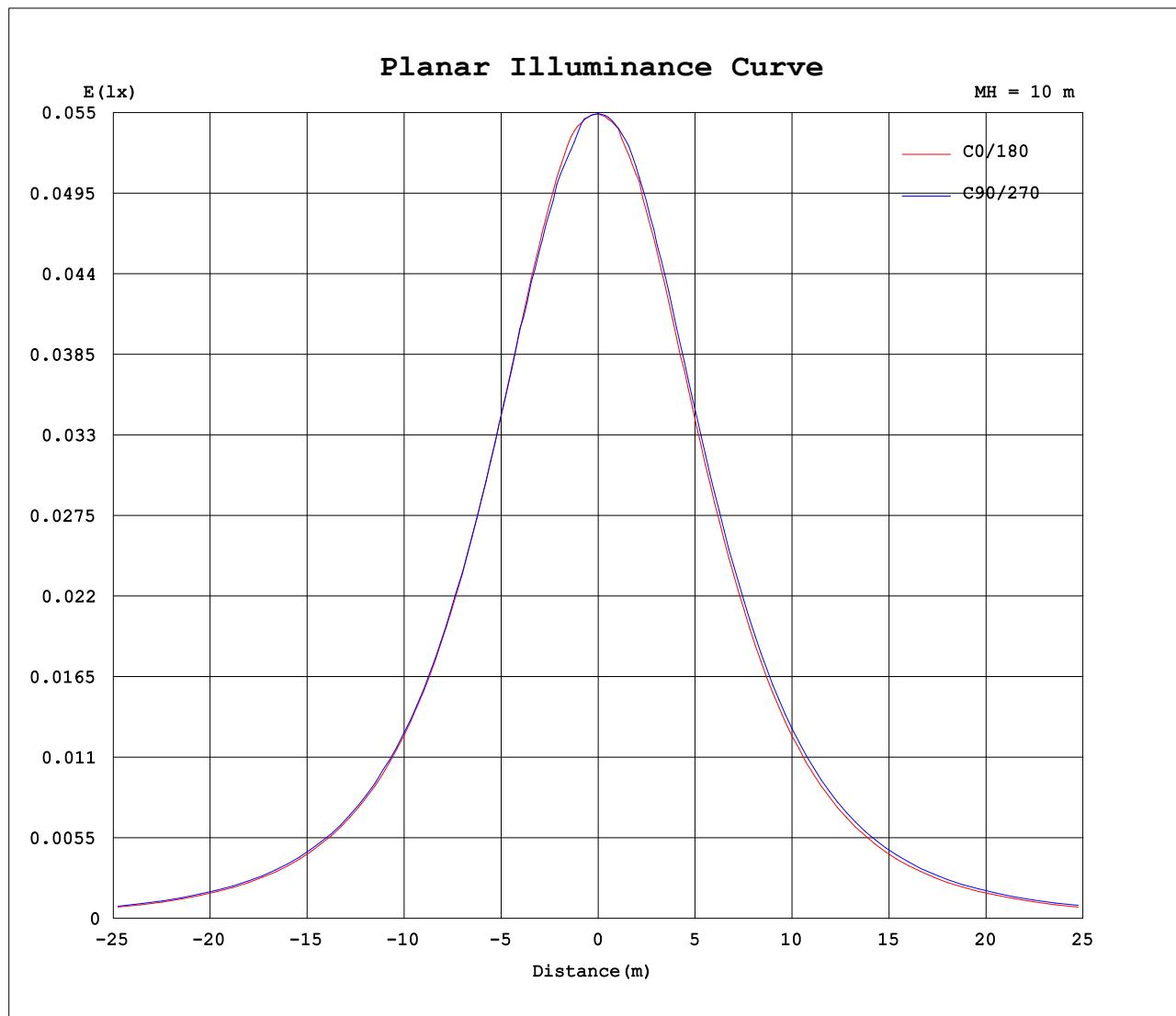
Test:U:12.00V I:0.4843A P:5.812W PF:1.000 Lamp Flux:15.2556x1 lm		
NAME: SF15-12V-5050-60-W12-SPI4-3000K-B	TYPE: 硅胶	WEIGHT:
DIM.: 21MM*11.5MM	SPEC.:	SERIAL No.:20230223
MFR.: OLYMPIA	SUR.:0.5*0.018	PROTECTION ANGLE:



C Range: 0 - 360DEG
C Interval: 30.0DEG
Test Speed: HIGH
Temperature:25.3DEG
Operators:WFW
Test Date:2023-02-23

γ Range: 0 - 180DEG
 γ Interval: 1.0DEG
Test System:EVERFINE GO-2000B_V1 SYSTEM V2.0.269
Humidity:65.0%
Test Distance:10.800m [K=1.0000]
Remarks:

Planar Illuminance Curve



C Range: 0 - 360DEG
C Interval: 30.0DEG
Test Speed: HIGH
Temperature: 25.3DEG
Operators: WFW
Test Date: 2023-02-23

γ Range: 0 - 180DEG
 γ Interval: 1.0DEG
Test System: EVERFINE GO-2000B_V1 SYSTEM V2.0.269
Humidity: 65.0%
Test Distance: 10.800m [K=1.0000]
Remarks:

LUMINOUS DISTRIBUTION INTENSITY DATA

Test:U:12.00V I:0.4843A P:5.812W PF:1.000 Lamp Flux:15.2556x1 lm		
NAME: SF15-12V-5050-60-W12-SPI4-3000K-B	TYPE: 硅胶	WEIGHT:
DIM.: 21MM*11.5MM	SPEC.:	SERIAL No.:20230223
MFR.: OLYMPIA	SUR.:0.5*0.018	PROTECTION ANGLE:

Table--1

UNIT: cd

C (DEG) γ (DEG)	0	30	60	90	120	150	180	210	240	270	300	330						
0	5.49	5.49	5.49	5.49	5.48	5.50	5.49	5.49	5.49	5.49	5.48	5.50						
5	5.49	5.48	5.48	5.48	5.47	5.44	5.48	5.48	5.49	5.49	5.46	5.50						
10	5.44	5.37	5.45	5.37	5.44	5.37	5.39	5.46	5.38	5.45	5.37	5.44						
15	5.31	5.26	5.32	5.26	5.33	5.25	5.26	5.33	5.26	5.32	5.27	5.29						
20	5.12	5.06	5.14	5.08	5.14	5.05	5.07	5.15	5.08	5.16	5.06	5.10						
25	4.88	4.82	4.92	4.87	4.92	4.83	4.85	4.92	4.86	4.93	4.84	4.88						
30	4.60	4.54	4.65	4.61	4.65	4.55	4.58	4.64	4.60	4.67	4.59	4.61						
35	4.28	4.23	4.34	4.29	4.36	4.25	4.27	4.33	4.28	4.38	4.27	4.29						
40	3.92	3.89	3.99	3.95	4.02	3.91	3.91	4.00	3.95	4.04	3.94	3.95						
45	3.54	3.51	3.62	3.59	3.64	3.52	3.52	3.62	3.59	3.67	3.59	3.57						
50	3.13	3.09	3.21	3.19	3.24	3.13	3.13	3.21	3.18	3.28	3.16	3.16						
55	2.70	2.65	2.79	2.78	2.81	2.71	2.70	2.79	2.77	2.85	2.74	2.73						
60	2.25	2.21	2.33	2.34	2.37	2.27	2.25	2.35	2.33	2.42	2.31	2.28						
65	1.80	1.77	1.90	1.91	1.93	1.81	1.81	1.90	1.91	1.99	1.86	1.84						
70	1.34	1.29	1.43	1.44	1.47	1.35	1.33	1.43	1.43	1.52	1.40	1.37						
75	0.87	0.83	0.96	0.98	1.00	0.87	0.86	0.96	0.96	1.05	0.93	0.91						
80	0.45	0.40	0.52	0.54	0.56	0.42	0.41	0.52	0.52	0.61	0.48	0.49						
85	0.13	0.06	0.17	0.17	0.19	0.08	0.06	0.17	0.16	0.25	0.14	0.15						
90	0.01	0.00	0.03	0.04	0.05	0.00	0.00	0.00	0.00	0.06	0.00	0.00						
95	0.00	0.00	0.02	0.04	0.04	0.00	0.00	0.00	0.00	0.05	0.00	0.00						
100	0.00	0.00	0.02	0.03	0.04	0.00	0.00	0.00	0.00	0.03	0.00	0.00						
105	0.00	0.00	0.02	0.01	0.04	0.00	0.00	0.00	0.00	0.03	0.00	0.00						
110	0.00	0.00	0.02	0.01	0.04	0.00	0.00	0.00	0.01	0.03	0.00	0.00						
115	0.00	0.00	0.02	0.01	0.03	0.00	0.00	0.00	0.01	0.03	0.00	0.00						
120	0.00	0.00	0.02	0.01	0.03	0.01	0.00	0.00	0.01	0.03	0.00	0.00						
125	0.00	0.00	0.02	0.01	0.03	0.01	0.00	0.00	0.01	0.03	0.00	0.00						
130	0.00	0.00	0.02	0.01	0.03	0.01	0.00	0.00	0.01	0.03	0.00	0.00						
135	0.00	0.00	0.02	0.01	0.03	0.01	0.00	0.00	0.01	0.03	0.00	0.00						
140	0.00	0.00	0.02	0.01	0.03	0.01	0.00	0.00	0.00	0.03	0.01	0.00						
145	0.00	0.01	0.01	0.01	0.03	0.01	0.00	0.00	0.00	0.03	0.01	0.00						
150	0.00	0.01	0.01	0.01	0.03	0.01	0.00	0.00	0.00	0.03	0.01	0.00						
155	0.00	0.01	0.01	0.01	0.03	0.01	0.00	0.00	0.00	0.03	0.01	0.00						
160	0.00	0.01	0.01	0.01	0.03	0.01	0.00	0.00	0.00	0.03	0.01	0.00						
165	0.00	0.01	0.01	0.01	0.03	0.01	0.00	0.00	0.00	0.03	0.01	0.00						
170	0.00	0.01	0.01	0.01	0.03	0.01	0.00	0.00	0.00	0.03	0.01	0.00						
175	0.00	0.01	0.01	0.01	0.03	0.01	0.00	0.00	0.00	0.03	0.01	0.00						
180	0.00	0.01	0.01	0.00	0.03	0.01	0.00	0.00	0.00	0.01	0.01	0.00						

C Range: 0 - 360DEG
C Interval: 30.0DEG
Test Speed: HIGH
Temperature:25.3DEG
Operators:WFW
Test Date:2023-02-23

γ Range: 0 - 180DEG
γ Interval: 1.0DEG
Test System:EVERFINE GO-2000B_V1 SYSTEM V2.0.269
Humidity:65.0%
Test Distance:10.800m [K=1.0000]
Remarks:

Photometric Data Table [cd]

G/C	0.0	30.0	60.0	90.0	120.0	150.0	180.0	210.0	240.0	270.0
0.0	5.492	5.485	5.485	5.492	5.478	5.499	5.492	5.485	5.485	5.492
3.0	5.492	5.478	5.485	5.492	5.478	5.492	5.478	5.492	5.485	5.492
6.0	5.499	5.457	5.472	5.450	5.461	5.423	5.478	5.480	5.478	5.482
9.0	5.472	5.395	5.458	5.388	5.443	5.374	5.409	5.469	5.388	5.472
12.0	5.402	5.333	5.396	5.353	5.396	5.305	5.374	5.416	5.367	5.402
15.0	5.312	5.263	5.319	5.263	5.326	5.249	5.256	5.326	5.263	5.319
18.0	5.202	5.139	5.222	5.153	5.216	5.138	5.152	5.229	5.152	5.229
21.0	5.077	5.021	5.098	5.042	5.112	5.028	5.028	5.098	5.035	5.112
24.0	4.939	4.875	4.959	4.917	4.973	4.875	4.910	4.959	4.924	4.987
27.0	4.773	4.716	4.821	4.771	4.821	4.723	4.730	4.807	4.757	4.835
30.0	4.599	4.543	4.648	4.605	4.655	4.550	4.577	4.641	4.598	4.669
33.0	4.419	4.370	4.468	4.425	4.482	4.383	4.383	4.461	4.418	4.495
36.0	4.212	4.162	4.274	4.245	4.288	4.176	4.189	4.267	4.231	4.315
39.0	4.004	3.947	4.066	4.030	4.087	3.975	3.975	4.066	4.030	4.108
42.0	3.775	3.726	3.838	3.809	3.866	3.753	3.760	3.844	3.808	3.893
45.0	3.540	3.511	3.616	3.594	3.644	3.525	3.525	3.616	3.587	3.671
48.0	3.291	3.254	3.381	3.379	3.408	3.282	3.289	3.367	3.351	3.443
51.0	3.048	3.019	3.125	3.109	3.159	3.047	3.039	3.124	3.109	3.194
54.0	2.785	2.742	2.875	2.853	2.903	2.790	2.797	2.882	2.853	2.944
57.0	2.515	2.479	2.605	2.596	2.640	2.527	2.520	2.605	2.596	2.688
60.0	2.252	2.209	2.335	2.340	2.370	2.271	2.250	2.348	2.333	2.425
63.0	1.982	1.945	2.079	2.091	2.113	1.987	1.987	2.079	2.077	2.175
66.0	1.698	1.689	1.802	1.807	1.836	1.717	1.710	1.815	1.820	1.892
69.0	1.428	1.384	1.525	1.537	1.559	1.426	1.426	1.531	1.523	1.615
72.0	1.144	1.100	1.234	1.260	1.282	1.149	1.142	1.241	1.252	1.344
75.0	0.8736	0.8304	0.9638	0.9758	0.9985	0.8651	0.8579	0.9635	0.9618	1.054
78.0	0.6036	0.5603	0.6935	0.7126	0.7351	0.5949	0.6014	0.6864	0.6917	0.7904
81.0	0.3748	0.3182	0.4440	0.4494	0.4787	0.3387	0.3384	0.4438	0.4287	0.5339
84.0	0.1875	0.1241	0.2294	0.2417	0.2503	0.1585	0.1376	0.2222	0.2072	0.3123
87.0	0.0628	0	0.0904	0.0623	0.1112	0	0	0.0766	0.0480	0.1527
90.0	0.0139	0	0.0347	0.0416	0.0486	0	0	0.0002	0	0.0624
93.0	0	0	0.0208	0.0416	0.0416	0	0	0	0	0.0555
96.0	0	0	0.0208	0.0415	0.0416	0	0	0	0	0.0416
99.0	0	0	0.0208	0.0346	0.0416	0	0	0	0	0.0346
102.0	0	0	0.0208	0.0345	0.0416	0	0	0	0	0.0346
105.0	0	0	0.0208	0.0139	0.0416	0	0	0	0	0.0346
108.0	0	0	0.0208	0.0139	0.0416	0	0	0	0	0.0346
111.0	0	0	0.0208	0.0139	0.0416	0	0	0	0.0138	0.0346
114.0	0	0	0.0208	0.0139	0.0346	0	0	0	0.0069	0.0277
117.0	0	0	0.0208	0.0139	0.0346	0	0	0	0.0069	0.0277
120.0	0	0	0.0208	0.0139	0.0346	0.0069	0	0	0.0069	0.0277
123.0	0	0	0.0208	0.0139	0.0346	0.0069	0	0	0.0069	0.0277
126.0	0	0	0.0208	0.0139	0.0346	0.0069	0	0	0.0069	0.0277
129.0	0	0	0.0208	0.0139	0.0277	0.0069	0	0	0.0069	0.0277
132.0	0	0	0.0208	0.0139	0.0277	0.0069	0	0	0.0069	0.0277
135.0	0	0	0.0208	0.0139	0.0277	0.0069	0	0	0.0070	0.0277
138.0	0	0	0.0208	0.0139	0.0277	0.0069	0	0	0	0.0277
141.0	0	0.0001	0.0208	0.0139	0.0277	0.0069	0	0	0	0.0277
144.0	0	0.0139	0.0139	0.0139	0.0277	0.0069	0	0	0	0.0277
147.0	0	0.0139	0.0139	0.0139	0.0277	0.0069	0	0	0	0.0277
150.0	0	0.0139	0.0139	0.0139	0.0346	0.0069	0	0	0	0.0277
153.0	0	0.0139	0.0139	0.0139	0.0277	0.0069	0	0	0	0.0277
156.0	0	0.0139	0.0139	0.0139	0.0277	0.0069	0	0	0	0.0277
159.0	0	0.0139	0.0139	0.0139	0.0277	0.0069	0	0	0	0.0277
162.0	0	0.0139	0.0139	0.0139	0.0277	0.0139	0	0	0	0.0277
165.0	0	0.0139	0.0139	0.0139	0.0277	0.0139	0	0	0	0.0277
168.0	0	0.0139	0.0139	0.0139	0.0277	0.0139	0	0	0	0.0277
171.0	0	0.0139	0.0139	0.0139	0.0277	0.0139	0	0	0	0.0277
174.0	0	0.0139	0.0139	0.0139	0.0277	0.0139	0	0	0	0.0277
177.0	0	0.0139	0.0139	0.0139	0.0277	0.0139	0	0	0	0.0072
180.0	0	0.0139	0.0069	0	0.0277	0.0139	0	0	0	0.0069
G/C	300.0	330.0								
0.0	5.478	5.499								
3.0	5.471	5.499								
6.0	5.437	5.506								
9.0	5.388	5.458								
12.0	5.319	5.375								
15.0	5.270	5.292								
18.0	5.152	5.195								
21.0	5.021	5.063								
24.0	4.910	4.932								
27.0	4.744	4.766								
30.0	4.591	4.606								

C Range: 0 - 360DEG
 C Interval: 30.0DEG
 Test Speed: HIGH
 Temperature: 25.3DEG
 Operators: WFW
 Test Date: 2023-02-23

γ Range: 0 - 180DEG
 γ Interval: 1.0DEG
 Test System: EVERFINE GO-2000B_V1 SYSTEM V2.0.269
 Humidity: 65.0%
 Test Distance: 10.800m [K=1.0000]
 Remarks:

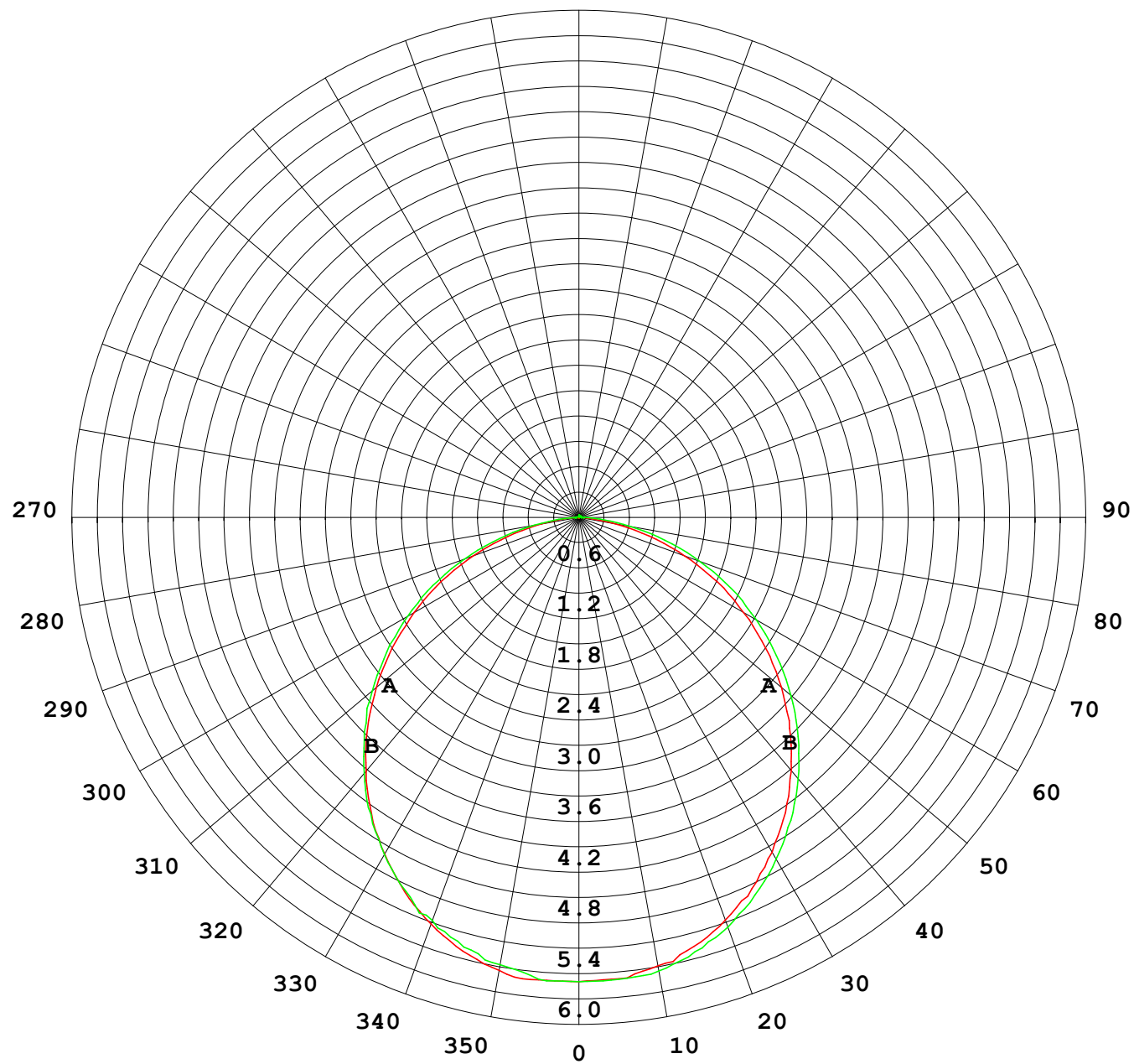
Photometric Data Table [cd]

33.0	4.397	4.426
36.0	4.203	4.225
39.0	4.023	4.018
42.0	3.795	3.803
45.0	3.586	3.567
48.0	3.330	3.325
51.0	3.081	3.076
54.0	2.825	2.820
57.0	2.569	2.556
60.0	2.305	2.279
63.0	2.049	2.030
66.0	1.772	1.746
69.0	1.495	1.469
72.0	1.211	1.192
75.0	0.9272	0.9081
78.0	0.6503	0.6449
81.0	0.4007	0.3955
84.0	0.1864	0.1945
87.0	0.0274	0.0558
90.0	0	0.0001
93.0	0	0
96.0	0	0
99.0	0	0
102.0	0	0
105.0	0	0
108.0	0	0
111.0	0	0
114.0	0	0
117.0	0	0
120.0	0	0
123.0	0	0
126.0	0	0
129.0	0	0
132.0	0	0
135.0	0	0
138.0	0.0139	0
141.0	0.0139	0
144.0	0.0139	0
147.0	0.0139	0
150.0	0.0139	0
153.0	0.0139	0
156.0	0.0139	0
159.0	0.0138	0
162.0	0.0069	0
165.0	0.0069	0
168.0	0.0069	0
171.0	0.0069	0
174.0	0.0069	0
177.0	0.0069	0
180.0	0.0069	0

C Range: 0 - 360DEG
C Interval: 30.0DEG
Test Speed: HIGH
Temperature: 25.3DEG
Operators: WFW
Test Date: 2023-02-23

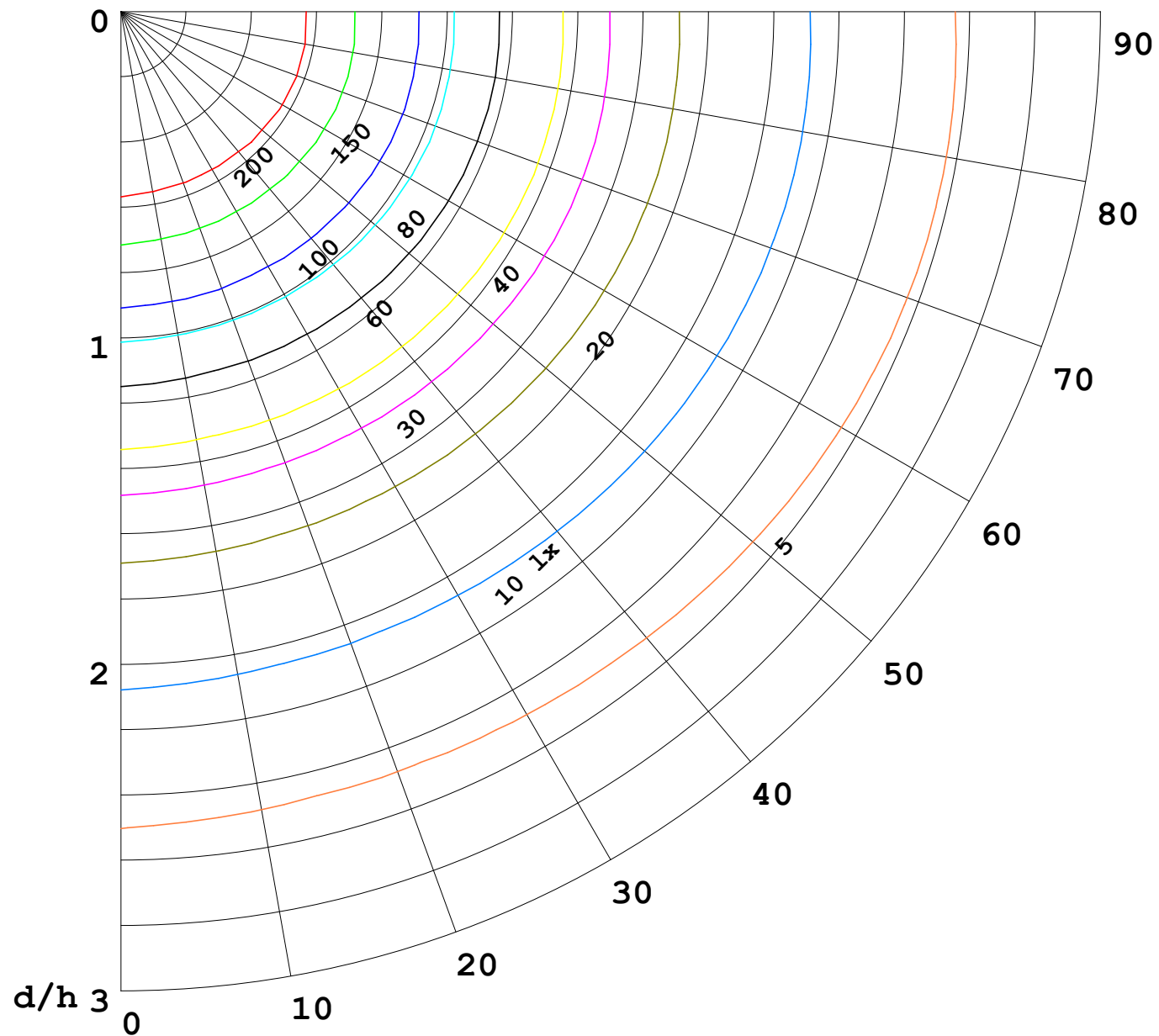
γ Range: 0 - 180DEG
γ Interval: 1.0DEG
Test System: EVERFINE GO-2000B_V1 SYSTEM V2.0.269
Humidity: 65.0%
Test Distance: 10.800m [K=1.0000]
Remarks:

I (cd)



1000 lm

$\kappa = 1$



F = 5000 lm
 K = 0.7
 Hcc = 0.0 m
 Hfc = 0.0 m
 Eave = 100 lx

	Pcc	Pw	Pfc
—	70	50	30
—	50	30	20

