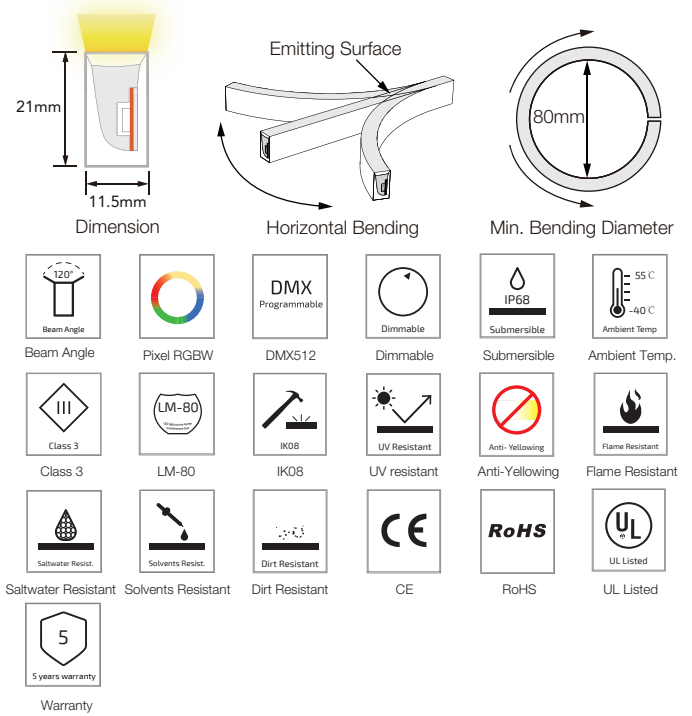


SF15 DMX Pixel Chasing RGBW Silicone LED Linear Flex

SF15-24V-5050-84-DMX4-RGBW

Specification



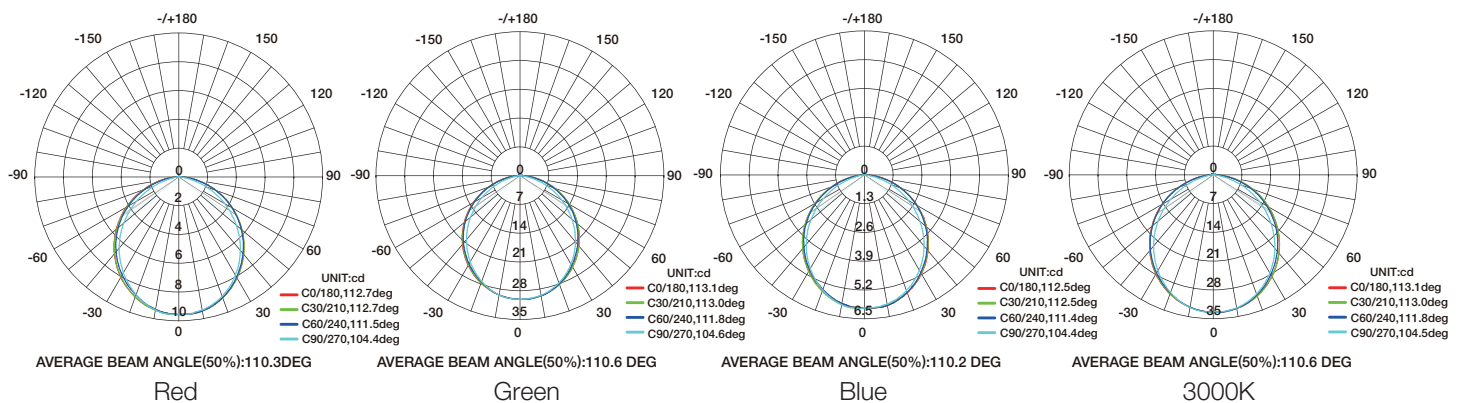
Technical Parameters

| Electrical | |
|-----------------------|--|
| Input Voltage | 24V DC |
| Power Consumption | 23W/m |
| Physical | |
| LED Count | 84 LEDs/m |
| Cutting Unit | 7 LEDs |
| Cutting Unit Length | 83.3mm |
| Minimum Bend Diameter | 80mm |
| Output | |
| LED Light | Epistar SMD LED 5050 |
| Color | RGBW (2700K/3000K/4000K/5000K) |
| Working Mode | DMX (RS485) |
| Pixels Quantity | 12 Pixels/m |
| IC Chips | UCS512H4L |
| Max Run Length* | |
| Single Feed | 8 M |
| Double Feed | 16 M |
| Beam Angle | 120° |
| Lumen Maintenance | 70,000 Hours L70 @ 25°C 50,000 Hours L70 @ 50°C |

| Emitting Color | Lumen Output |
|----------------|--------------|
| Red | 55lm/m |
| Green | 130lm/m |
| Blue | 40lm/m |
| 3000K | 170lm/m |

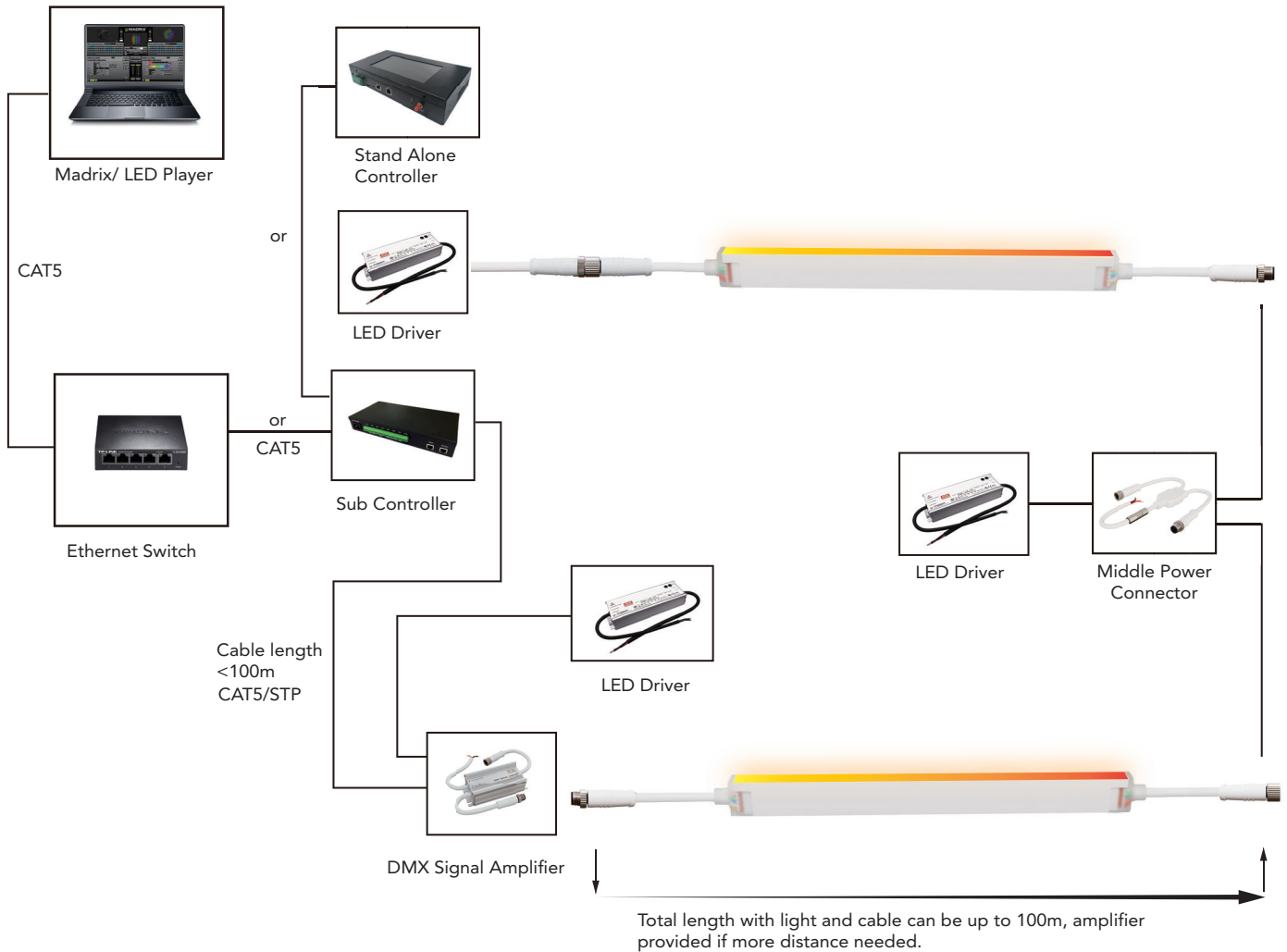
| Temperature Ranges | |
|--------------------|-----------------------------------|
| Installation | 0°C to 50°C |
| Operating | -40°C to 55°C |
| Dependability | |
| Warranty | 5 Years Warranty |
| IP Rating | IP68 Wet location submersible <2m |

Illuminance Distribution



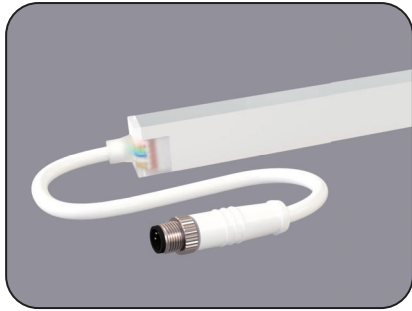
SF15 DMX Pixel Chasing RGBW Silicone LED Linear Flex

Connection

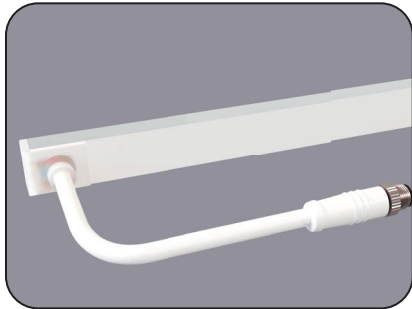
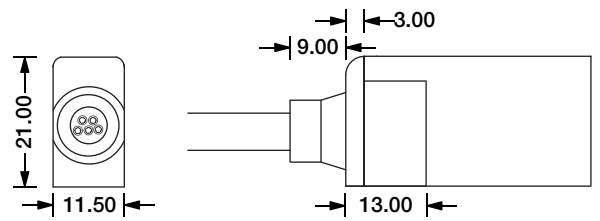


SF15 Configuration and Accessories

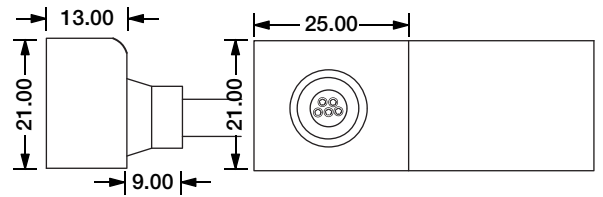
Mold Injection Connector (IP68 Factory Assembly Only)



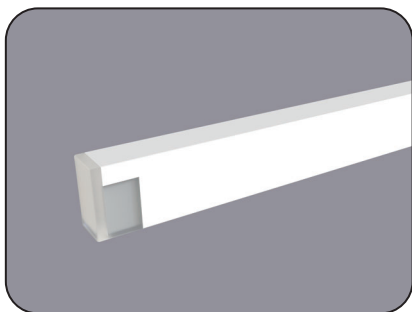
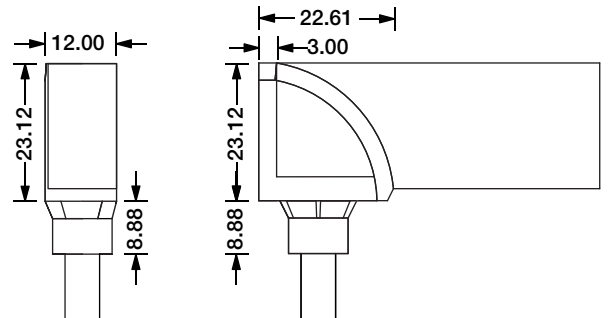
Direct Entry Connector
MJ-SF15-D5-D02SM
MJ-SF15-D5-D03SFM



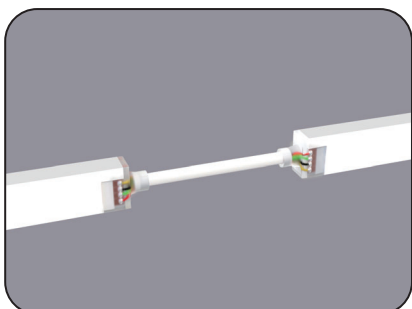
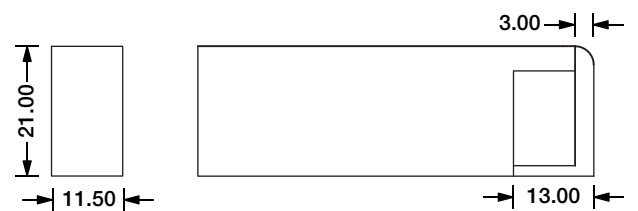
Side Entry Connector
MJ-SF15-D5-S02SM
MJ-SF15-D5-S03SFM



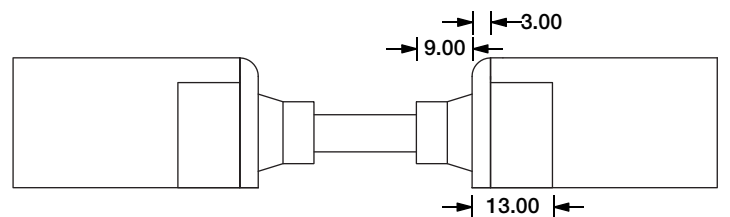
Bottom Entry Connector
MJ-SF15-D5-B02SM
MJ-SF15-D5-B03SFM



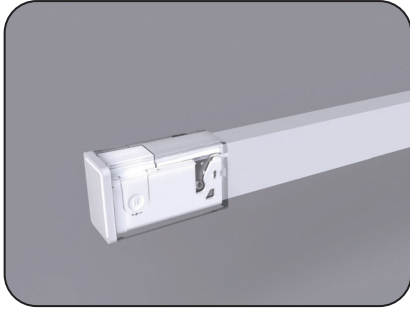
End Cap



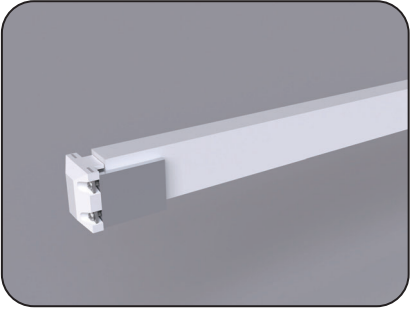
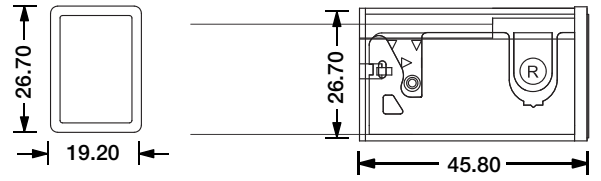
Jumper
MJ-SF15-D5-D-JC



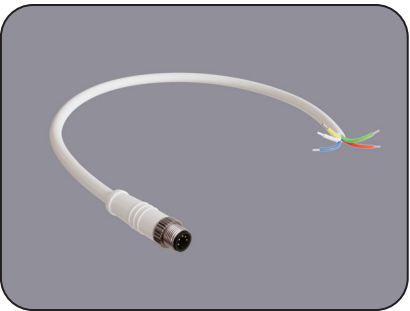
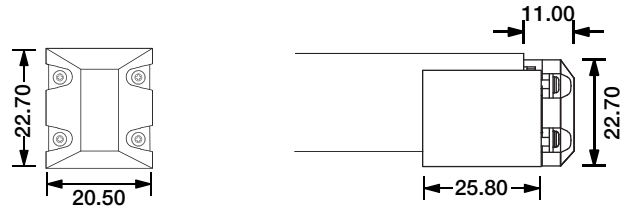
SF15 Configuration and Accessories



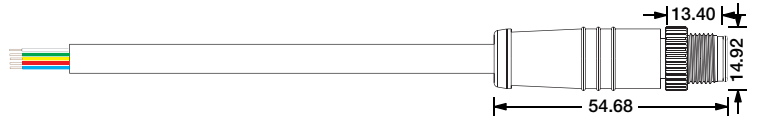
DIY Snap End Cap
DIY-SN-END-15-D-01/02



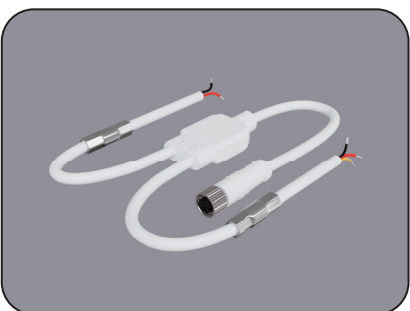
DIY Screw End Cap
DIY-SC-END-15



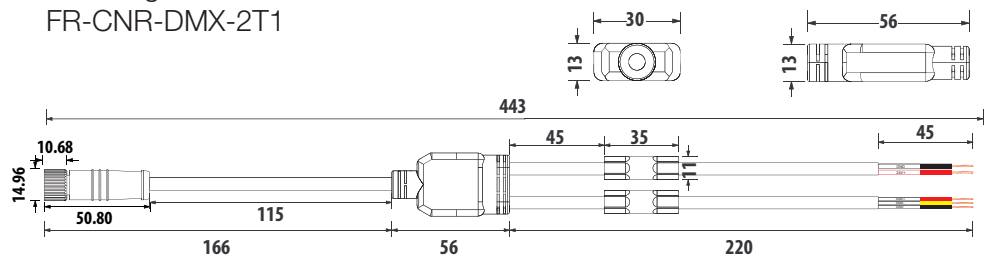
Male Connector
M12-M-5C-18AWG+24AWG-D6-W-0327-S



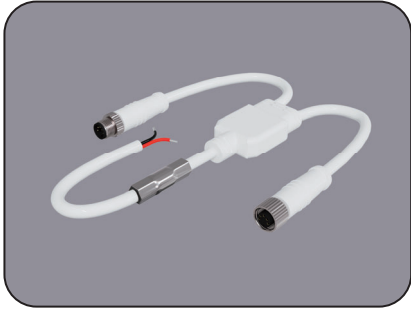
Female Connector
M12-F-5C-18AWG+24AWG-D6-W-0327-S



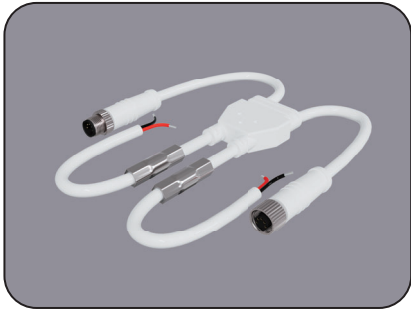
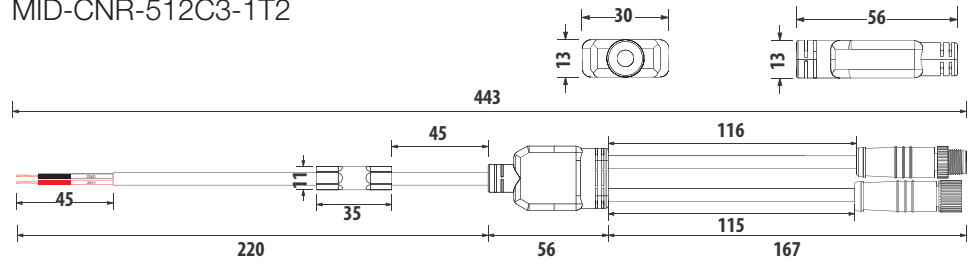
Front Signal & Power Connector
FR-CNR-DMX-2T1



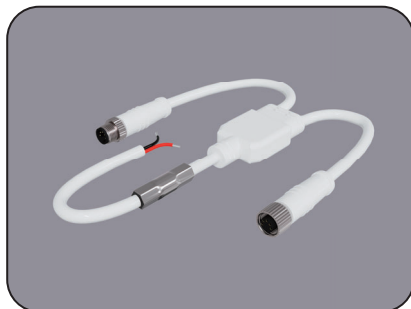
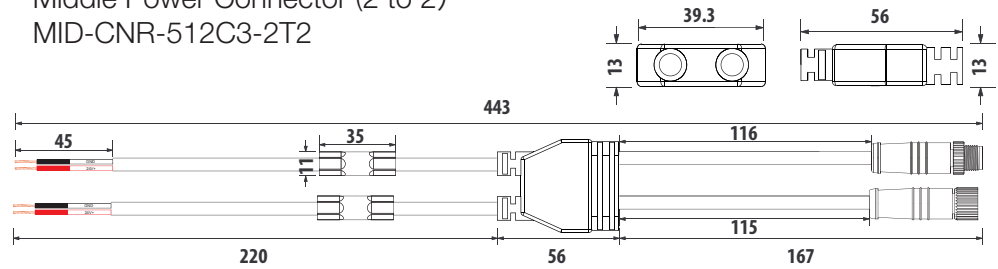
SF15 Configuration and Accessories



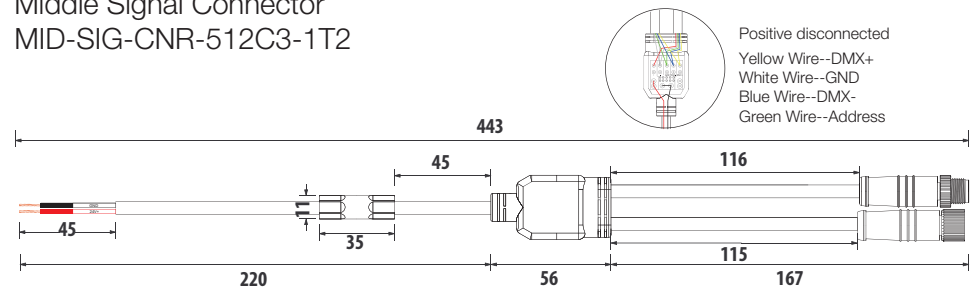
Middle Power Connector (1 to 2)
MID-CNR-512C3-1T2



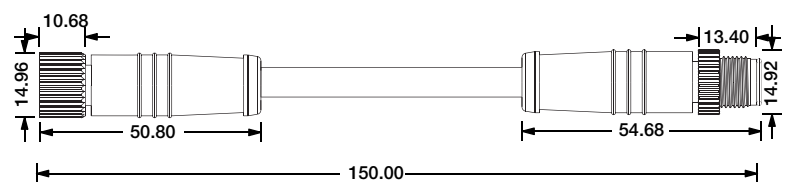
Middle Power Connector (2 to 2)
MID-CNR-512C3-2T2



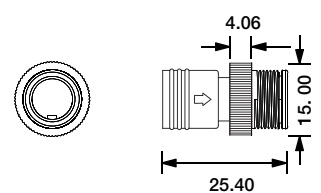
Middle Signal Connector
MID-SIG-CNR-512C3-1T2



Positive Disconnected Connector Cable
M12-EXT-SIG-5C-20AWG-D6-W-015



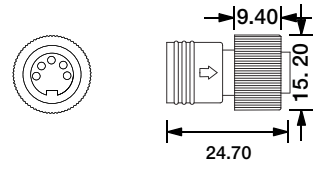
Male Connector End Cap
SYZ-EC-M12-M



SF15 Configuration and Accessories

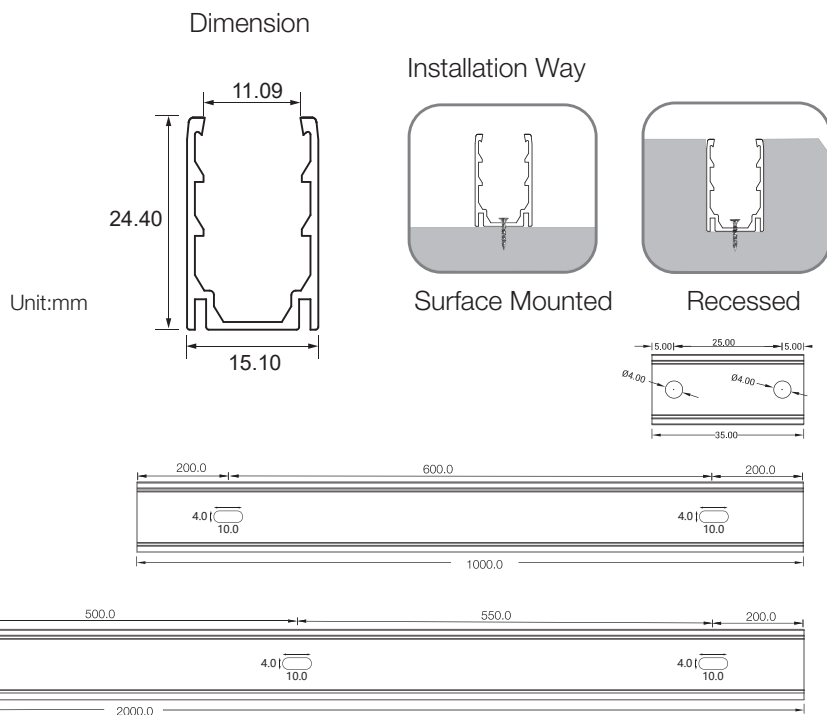
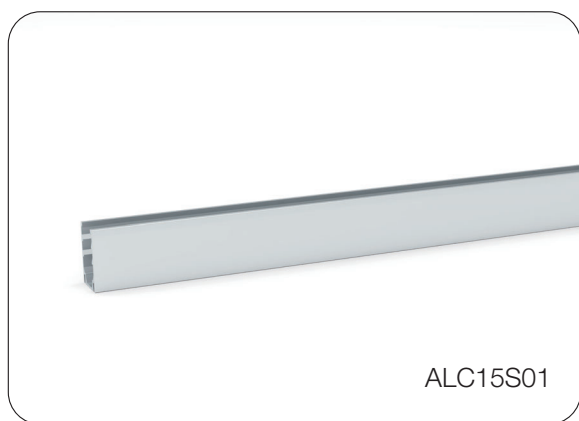


Female Connector End Cap
SYZ-EC-M12-F-5C

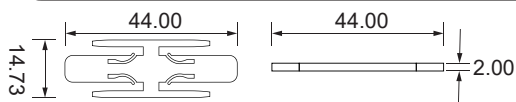
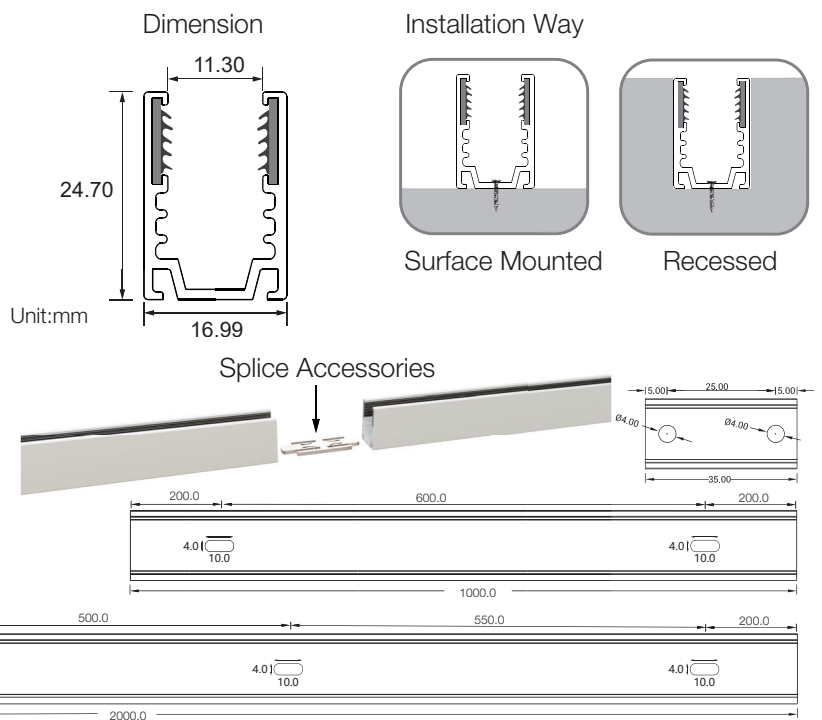


LED Linear Flex Mounting Channel

1. Aluminum Channel



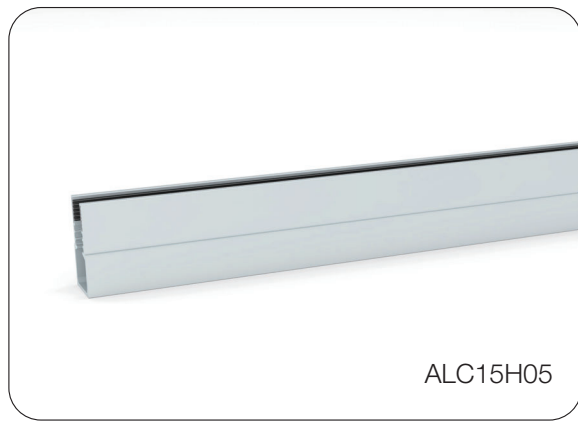
| Model | W x H(mm) | Standard Length | Screw Holes | Holes Numbers | Suitable Product |
|--------------|-------------|-----------------|-------------|---------------|------------------|
| ALC15S01-035 | 15.10*24.40 | 35mm | Φ4.0mm | 2 | F15, SF15 |
| ALC15S01-100 | | 1000mm | ○4.0mm | 2 | F15, SF15 |
| ALC15S01-200 | | 2000mm | ○4.0mm | 4 | F15, SF15 |



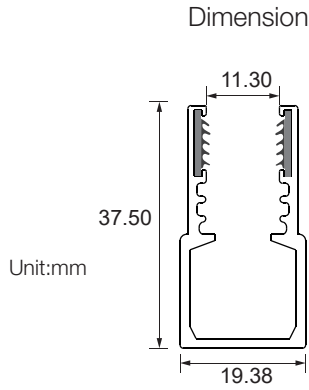
Splice Accessories: ALC15S04-SP

| Model | W x H(mm) | Standard Length | Screw Holes | Holes Numbers | Suitable Product |
|--------------|-------------|-----------------|-------------|---------------|------------------|
| ALC15S04-035 | 16.99*24.70 | 35mm | Φ4.0mm | 2 | F15, SF15 |
| ALC15S04-100 | | 1000mm | ○4.0mm | 2 | F15, SF15 |
| ALC15S04-200 | | 2000mm | ○4.0mm | 4 | F15, SF15 |

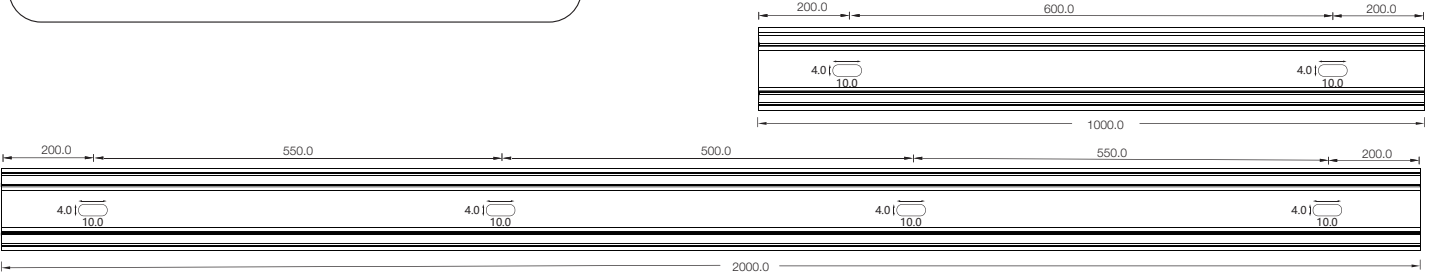
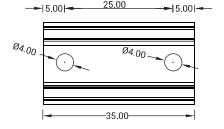
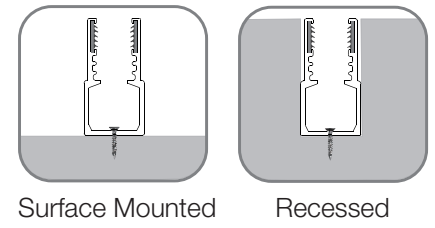
LED Linear Flex Mounting Channel



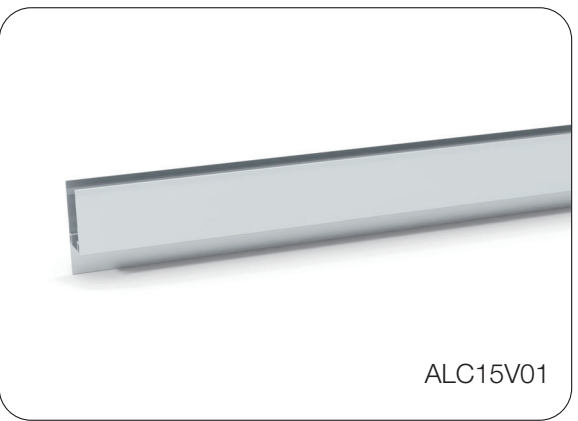
ALC15H05



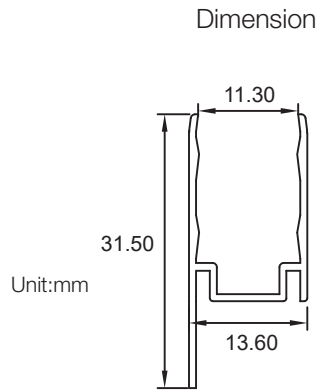
Installation Way



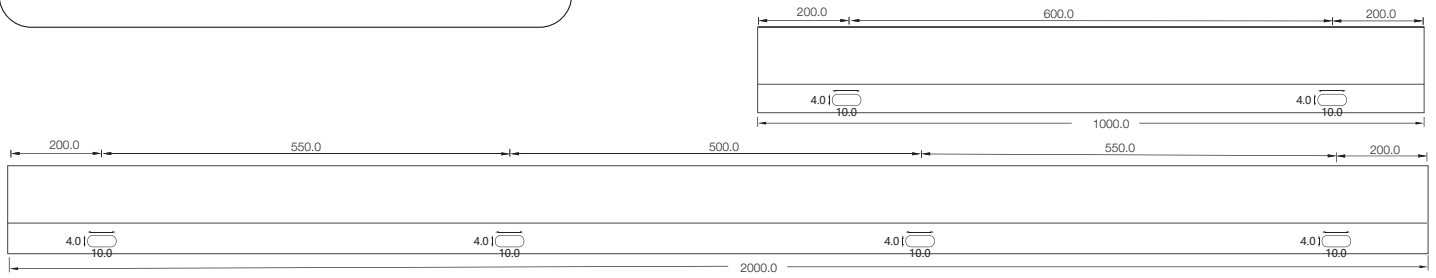
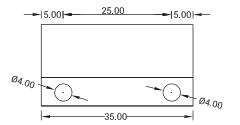
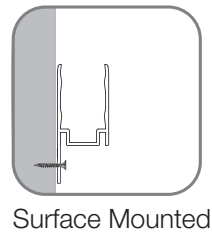
| Model | W x H(mm) | Standard Length | Screw Holes | Holes Numbers | Suitable Product |
|--------------|-------------|-----------------|-------------|---------------|------------------|
| ALC15H05-035 | 19.38*37.50 | 35mm | Φ4.0mm | 2 | F15, SF15 |
| ALC15H05-100 | | 1000mm | ○4.0mm | 2 | F15, SF15 |
| ALC15H05-200 | | 2000mm | ○4.0mm | 4 | F15, SF15 |



ALC15V01



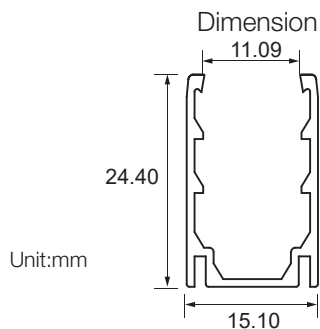
Installation Way



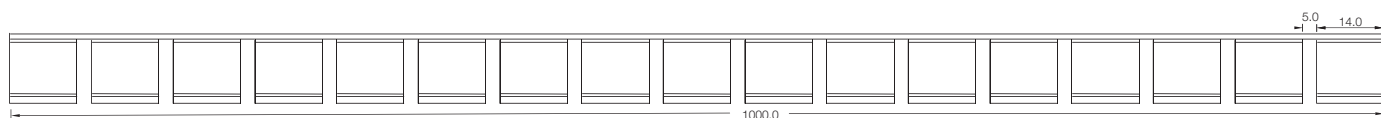
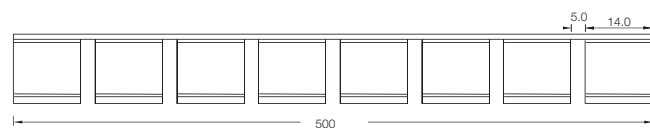
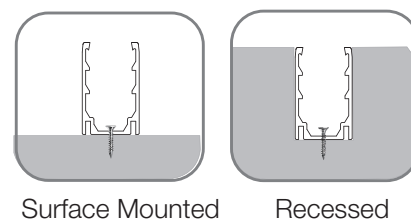
| Model | W x H(mm) | Standard Length | Screw Holes | Holes Numbers | Suitable Product |
|--------------|-------------|-----------------|-------------|---------------|------------------|
| ALC15V01-035 | 13.60*31.50 | 35mm | Φ4.0mm | 2 | F15, SF15 |
| ALC15V01-100 | | 1000mm | ○4.0mm | 2 | F15, SF15 |
| ALC15V01-200 | | 2000mm | ○4.0mm | 4 | F15, SF15 |

LED Linear Flex Mounting Channel

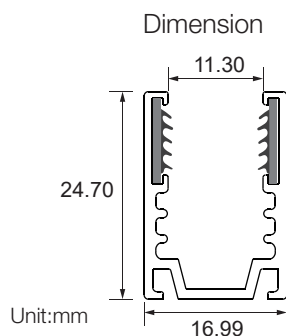
2. Flexible Aluminum Channel



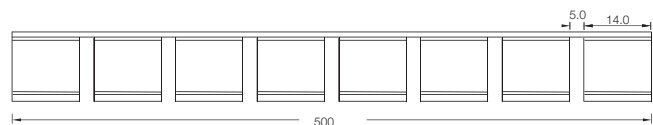
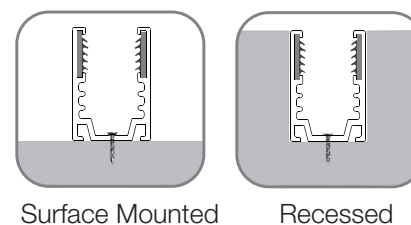
Installation Way



| Model | W x H(mm) | Standard Length | Suitable Product |
|---------------|-------------|-----------------|------------------|
| ALC15S01FLX05 | 15.10*24.40 | 500mm | F15, SF15 |
| ALC15S01FLX10 | | 1000mm | F15, SF15 |



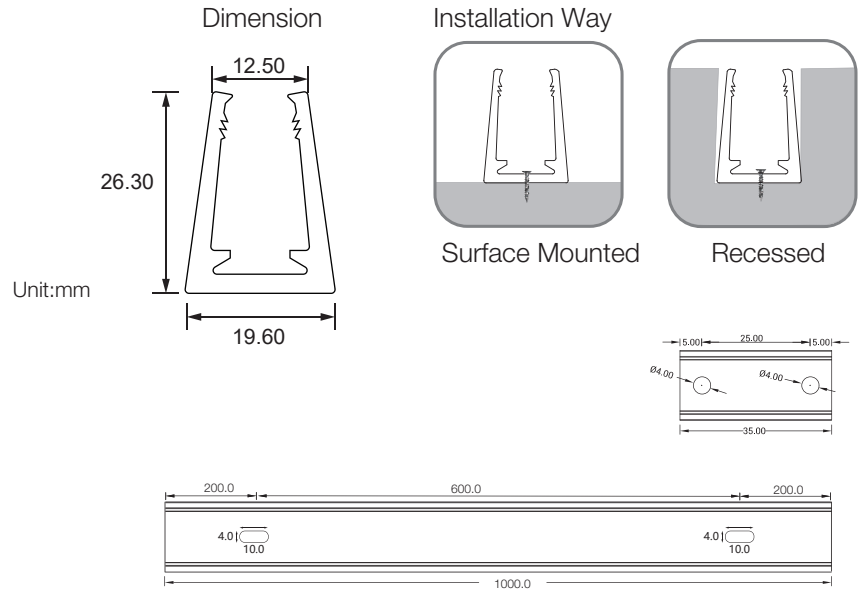
Installation Way



| Model | W x H(mm) | Standard Length | Suitable Product |
|---------------|-------------|-----------------|------------------|
| ALC15S04FLX05 | 16.99*24.70 | 500mm | F15, SF15 |
| ALC15S04FLX10 | | 1000mm | F15, SF15 |

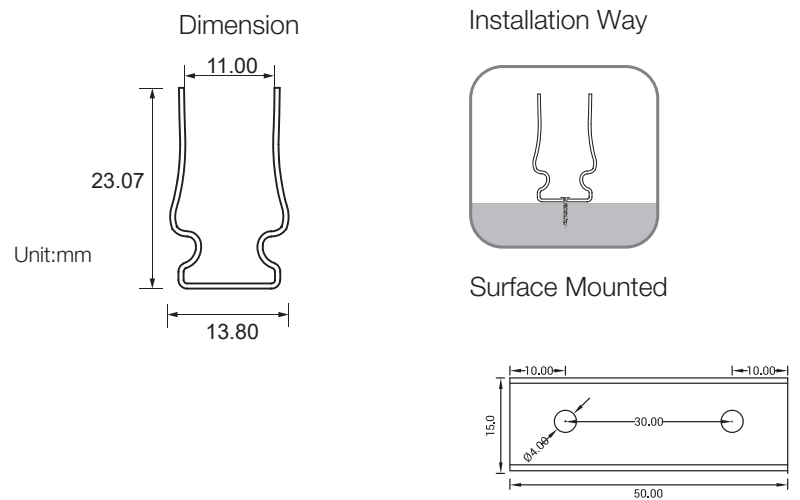
LED Linear Flex Mounting Channel

3. Plastic Channel



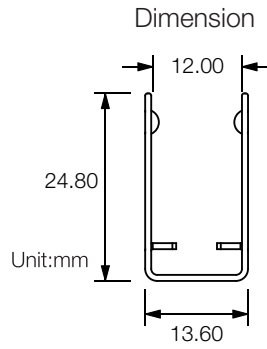
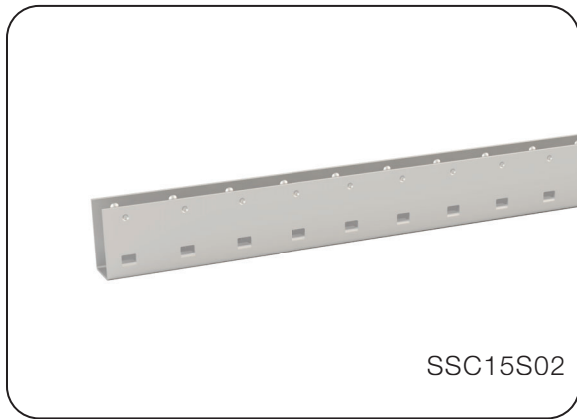
| Model | W x H(mm) | Standard Length | Screw Holes | Holes Numbers | Suitable Product |
|------------------|-------------|-----------------|-------------|---------------|------------------|
| PC15/21S01-T-035 | 19.60*26.30 | 35mm | Φ4.0mm | 2 | F15, SF15 |
| PC15/21S01-T-100 | | 1000mm | ○4.0mm | 2 | F15, SF15 |

4. Stainless Steel Channel

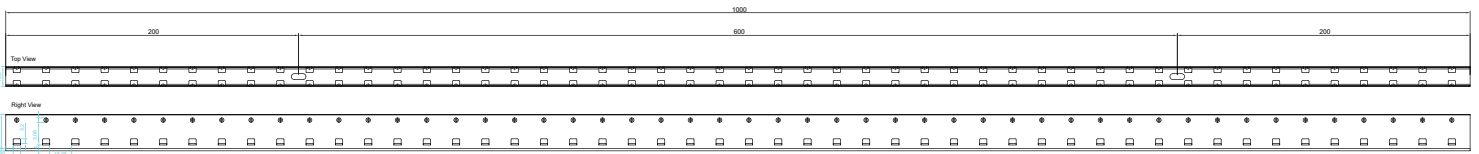
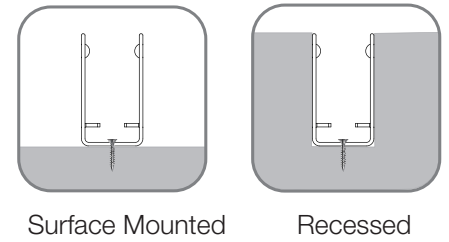


| Model | W x H(mm) | Standard Length | Material | Screw Holes | Holes Numbers | Suitable Product |
|-------------|-------------|-----------------|----------------------|-------------|---------------|------------------|
| SSC15S01-05 | 13.80*23.07 | 50mm | Stainless Steel 316L | Φ4.0mm | 2 | F15, SF15 |

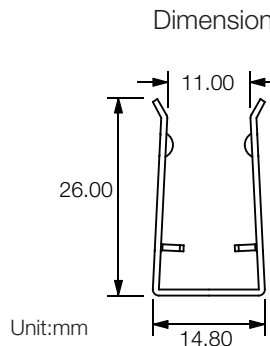
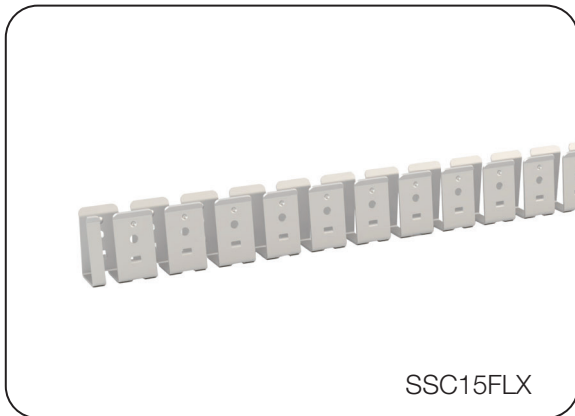
LED Linear Flex Mounting Channel



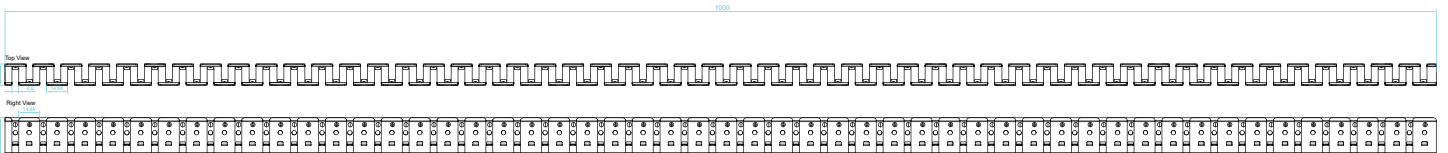
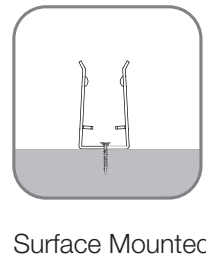
Installation Way



| Model | W x H(mm) | Standard Length | Material | Screw Holes | Holes Numbers | Suitable Product |
|--------------|-------------|-----------------|----------------------|-------------|---------------|------------------|
| SSC15S02-100 | 13.60*24.80 | 1000mm | Stainless Steel 316L | ○4.0x10mm | 2 | F15, SF15 |



Installation Way



| Model | W x H(mm) | Standard Length | Material | Suitable Product |
|------------|-------------|-----------------|----------------------|------------------|
| SSC15FLX01 | 14.80*26.00 | 100mm | Stainless Steel 316L | F15, SF15 |
| SSC15FLX03 | | 300mm | Stainless Steel 316L | F15, SF15 |
| SSC15FLX05 | | 500mm | Stainless Steel 316L | F15, SF15 |
| SSC15FLX10 | | 1000mm | Stainless Steel 316L | F15, SF15 |

Product Packing Details



Standard : Carton (White Carton+Paper Reel Inside)

| Product | Max.length/Reel | Carton Size | Net Weight | Gross Weight |
|----------|-----------------|-------------|------------|--------------|
| F15/SF15 | 30m | 35*35*19cm | 12.0kg | 13.6kg |
| F16/SF16 | 28m | 35*35*19cm | 12.9kg | 14.5kg |
| SF17 | 28m | 35*35*19cm | 12.9kg | 14.5kg |
| SF18 | 28m | 35*35*19cm | 12.9kg | 14.5kg |
| F21/SF21 | 20m | 35*35*19cm | 10.4kg | 12.0kg |
| SF10 | 35m | 35*35*19cm | 11.2kg | 12.8kg |
| SF09 | 45m | 35*35*19cm | 7.7kg | 9.3kg |
| SF08 | 60m | 35*35*19cm | 14.4kg | 16.0kg |
| SF06 | 60m | 35*35*19cm | 14.4kg | 16.0kg |



Standard : Carton (White Carton+ Roll up packing Inside)

| Product | Coiling Max. length | Quantity (Roll) | Carton Size | Net Weight | Gross Weight |
|----------|---------------------|-----------------|-------------|------------|--------------|
| SP01 | 10m | 10 | 35*35*19cm | 20.0kg | 21.6kg |
| SP05 | 11m | 10 | 35*35*19cm | 19.8kg | 21.4kg |
| SF05 | 11m | 10 | 35*35*19cm | 18.0kg | 19.6kg |
| SF06 | 8m | 14 | 35*35*19cm | 26.8kg | 28.4kg |
| SF08 | 8m | 14 | 35*35*19cm | 26.8kg | 28.4kg |
| SF09 | 8m | 10 | 35*35*19cm | 14.4kg | 16.0kg |
| SF10 | 6m | 11 | 35*35*19cm | 21.2kg | 22.8kg |
| F15/SF15 | 6m | 7 | 35*35*19cm | 16.8kg | 18.4kg |
| F16/SF16 | 4.5m | 9 | 35*35*19cm | 18.7kg | 20.3kg |
| SF17 | 4.5m | 9 | 35*35*19cm | 18.7kg | 20.3kg |
| SF18 | 4.5m | 9 | 35*35*19cm | 18.7kg | 20.3kg |
| F21/SF21 | 4.5m | 9 | 35*35*19cm | 21.0kg | 22.6kg |
| SF24 | 13m | 2 | 41*41*19cm | 15.6kg | 17.5kg |

Product Packing Details



Custom : Carton (White Box+Plastic Plate Inside)

| Product | Packing 1 | | | | Packing 2 | | | |
|----------|-----------------------|------------------|-------------|--------------|-----------------------|------------------|-------------|--------------|
| | Packing 1 Max. Length | Quantity (Plate) | Carton Size | Gross Weight | Packing 2 Max. Length | Quantity (Plate) | Carton Size | Gross Weight |
| F15/SF15 | 5m | 1 | 41*41*5cm | 2.5kg | 10m | 1 | 57*48*6cm | 5.0kg |
| | | 4 | 41*41*19cm | 10.6kg | | 5 | 57*48*19cm | 25.0kg |
| F16/SF16 | 5m | 1 | 41*41*5cm | 2.5kg | 10m | 1 | 63*53*6cm | 5.0kg |
| | | 4 | 41*41*19cm | 10.0kg | | 3 | 63*53*16cm | 15.0kg |
| SF17 | 5m | 1 | 41*41*5cm | 2.5kg | 10m | 1 | 63*53*6cm | 5.0kg |
| | | 4 | 41*41*19cm | 10.6kg | | 3 | 63*53*16cm | 15.0kg |
| SF18 | 5m | 1 | 41*41*5cm | 2.5kg | 10m | 1 | 63*53*6cm | 5.0kg |
| | | 4 | 41*41*19cm | 10.6kg | | 3 | 63*53*16cm | 15.0kg |
| F21/SF21 | 5m | 1 | 41*41*5cm | 3.1kg | 10m | 1 | 63*53*6cm | 6.2kg |
| | | 4 | 41*41*19cm | 13.0kg | | 3 | 63*53*16cm | 18.6kg |
| SP01 | 10m | 1 | 41*41*5cm | 2.6kg | 20m | 1 | 57*48*6cm | 5.0kg |
| | | 4 | 41*41*19cm | 11.0kg | | 5 | 57*48*19cm | 25.0kg |
| SP05 | 10m | 1 | 41*41*5cm | 2.4kg | 20m | 1 | 57*48*6cm | 3.6kg |
| | | 4 | 41*41*19cm | 9.6kg | | 5 | 57*48*19cm | 18.0kg |
| SF05 | 10m | 1 | 41*41*5cm | 2.0kg | 20m | 1 | 57*48*6cm | 4.0kg |
| | | 4 | 41*41*19cm | 8.0kg | | 5 | 57*48*19cm | 20.0kg |
| SF06 | 7m | 1 | 41*41*5cm | 2.3kg | 14m | 1 | 57*48*6cm | 4.4kg |
| | | 4 | 41*41*19cm | 9.2kg | | 5 | 57*48*19cm | 22.0kg |
| SF08 | 7m | 1 | 41*41*5cm | 2.3kg | 14m | 1 | 57*48*6cm | 4.4kg |
| | | 4 | 41*41*19cm | 9.2kg | | 5 | 57*48*19cm | 22.0kg |
| SF09 | 9m | 1 | 41*41*5cm | 2.0kg | 18m | 1 | 57*48*6cm | 3.9kg |
| | | 4 | 41*41*19cm | 8.0kg | | 5 | 57*48*19cm | 19.5kg |
| SF10 | 5m | 1 | 41*41*5cm | 2.3kg | 10m | 1 | 57*48*6cm | 4.2kg |
| | | 4 | 41*41*19cm | 9.2kg | | 5 | 57*48*19cm | 21.0kg |
| SF24 | 5m | 1 | 57*48*6cm | 2.3kg | 10m | 1 | 63*53*6cm | 4.2kg |
| | | 4 | 57*48*19cm | 9.2kg | | 5 | 63*53*16cm | 21.0kg |
| SF33 | 3m | 1 | 63*53*6cm | 3.4kg | 10m | 1 | 85*73*6cm | 11.5kg |
| | | 3 | 63*53*16cm | 10.2kg | | 2 | 85*73*11cm | 23.0kg |
| SF34 | 3m | 1 | 63*53*6cm | 3.2kg | 10m | 1 | 85*73*6cm | 11.0kg |
| | | 3 | 63*53*16cm | 9.6kg | | 2 | 85*73*11cm | 22.0kg |