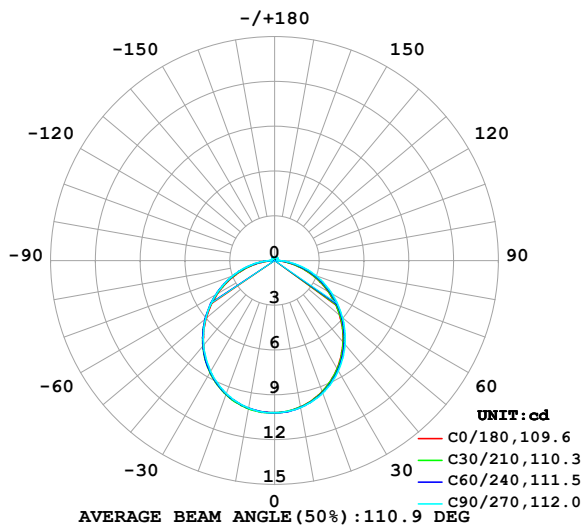


LUMINAIRE PHOTOMETRIC TEST REPORT

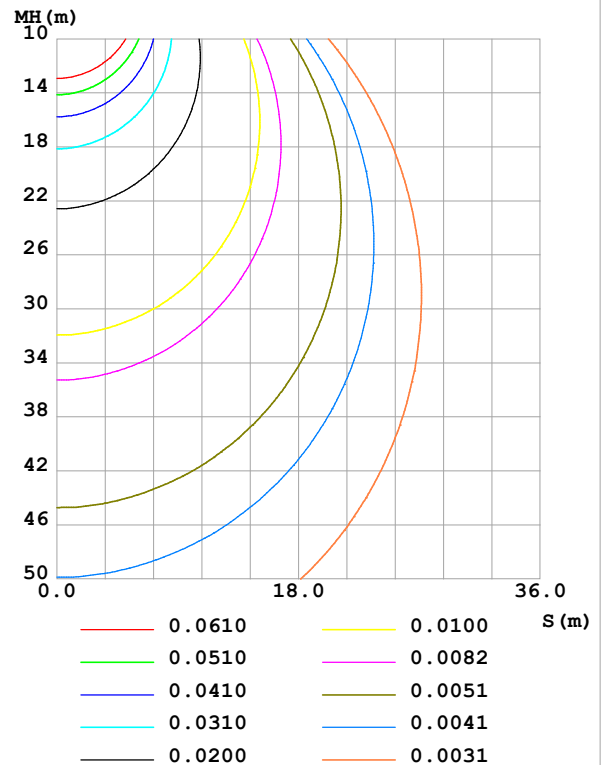
Test:U:24.00V I:0.2376A P:5.702W PF:1.000 Freq:0Hz Lamp Flux:30.1964x1 lm		
NAME: SF15-24V-5050-70-SPI-RGBW(4000K)-B	TYPE:	WEIGHT:
SPEC.:	DIM.: Length=1m	SERIAL No.:
MFR.: OLympia lighting	SUR.:	Shielding Angle:

DATA OF LAMP		PHOTOMETRIC DATA				Eff: 5.30 lm/W
MODEL	5050	I _{max} (cd)	10.20	S/MH(C0/180)	1.26	
NOMINAL POWER(W)		LOR(%)	100.1	S/MH(C90/270)	1.25	
RATED VOLTAGE(V)	24	TOTAL FLUX(lm)	30.225	η UP,DN(C0-180)	1.9,47.6	
NOMINAL FLUX(lm)	30.1964	CIE CLASS	DIRECT	η UP,DN(C180-360)	2.1,48.5	
LAMPS INSIDE	1	η up (%)	4.0	CIBSE SHR NOM	1.25	
TEST VOLTAGE(V)		η down (%)	96.1	CIBSE SHR MAX	1.35	

LUMINOUS INTENSITY DISTRIBUTION DIAGRAM



C0 PLANE ISOLUX DIAGRAM (UNIT:lx)



C Range: 0 - 360DEG
C Interval: 30.0DEG
Test Speed: HIGH
Temperature:25.3℃
Operators:
Test Date:2025-03-06

γ Range: 0 - 180DEG
γ Interval: 1.0DEG
Test System:EVERFINE GO-2000B_V1 SYSTEM V2.00.488
Humidity:65.0%
Test Distance:6.360m [K=1.0000]
Remarks:

ZONAL FLUX DIAGRAM

ZONAL FLUX DIAGRAM:

γ	C0	C45	C90	C135	C180	C225	C270	C315	γ	Φ zone	Φ total	%lum, lamp
10	9.955	9.978	10.00	10.05	10.05	10.06	10.04	9.992	0- 10	0.9651	0.9651	3.19,3.2
20	9.330	9.384	9.443	9.518	9.518	9.534	9.479	9.406	10- 20	2.760	3.725	12.3,12.3
30	8.369	8.434	8.536	8.625	8.624	8.654	8.590	8.470	20- 30	4.163	7.888	26.1,26.1
40	7.129	7.213	7.340	7.430	7.423	7.475	7.406	7.264	30- 40	4.985	12.87	42.6,42.6
50	5.699	5.795	5.934	6.010	5.981	6.065	6.027	5.856	40- 50	5.132	18.00	59.6,59.6
60	4.141	4.262	4.445	4.448	4.406	4.514	4.525	4.326	50- 60	4.617	22.62	74.8,74.9
70	2.552	2.701	2.920	2.845	2.776	2.906	2.978	2.761	60- 70	3.558	26.18	86.6,86.7
80	1.034	1.201	1.431	1.309	1.219	1.361	1.488	1.255	70- 80	2.146	28.33	93.7,93.8
90	0.1242	0.1420	0.2939	0.1713	0.1097	0.2108	0.3062	0.2186	80- 90	0.6927	29.02	96,96.1
100	0.1218	0.1461	0.2027	0.1457	0.1246	0.1812	0.2694	0.1857	90-100	0.1909	29.21	96.6,96.7
110	0.1327	0.1546	0.1905	0.1558	0.1414	0.1884	0.2326	0.1917	100-110	0.1808	29.39	97.2,97.3
120	0.1558	0.1718	0.2012	0.1719	0.1598	0.1998	0.2306	0.1982	110-120	0.1776	29.57	97.8,97.9
130	0.1731	0.1857	0.2079	0.1862	0.1743	0.2076	0.2310	0.2050	120-130	0.1714	29.74	98.4,98.5
140	0.1857	0.2064	0.2246	0.2042	0.1904	0.2153	0.2310	0.2144	130-140	0.1570	29.90	98.9,99
150	0.1990	0.2238	0.2402	0.2195	0.2125	0.2229	0.2310	0.2214	140-150	0.1352	30.03	99.4,99.5
160	0.2162	0.2346	0.2421	0.2304	0.2296	0.2275	0.2310	0.2283	150-160	0.1043	30.14	99.7,99.8
170	0.2279	0.2374	0.2408	0.2363	0.2342	0.2339	0.2331	0.2335	160-170	0.0659	30.20	99.9,100
180	0.2336	0.2382	0.2396	0.2409	0.2308	0.2368	0.2425	0.2409	170-180	0.0225	30.22	100,100
DEG	LUMINOUS INTENSITY:cd									UNIT:lm		

Conical surface Flux(90deg): 15.464 lm

%lum = 51.2%

%lamp = 51.2%

Conical surface Flux(130deg): 24.561 lm

%lum = 81.3%

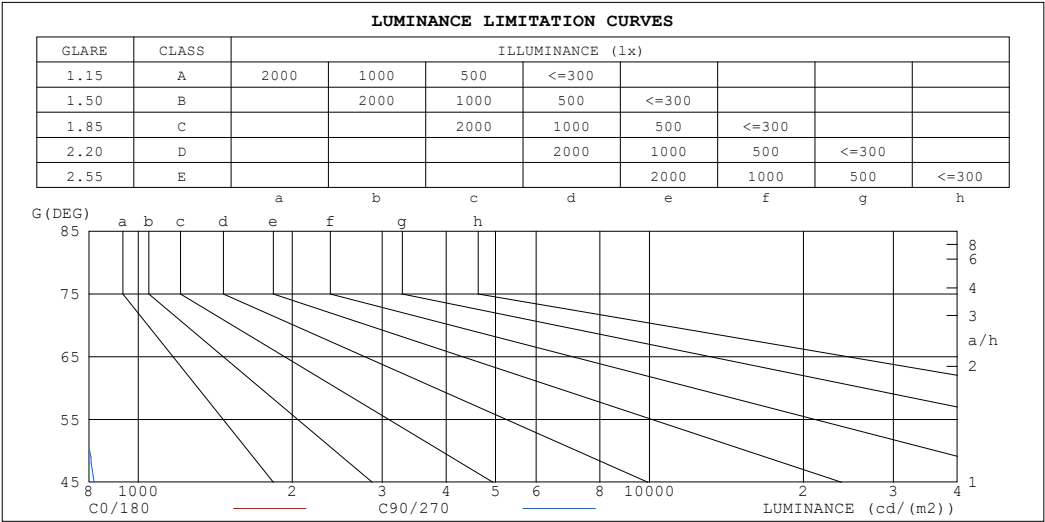
%lamp = 81.3%

C Range: 0 - 360DEG
 C Interval: 30.0DEG
 Test Speed: HIGH
 Temperature:25.3℃
 Operators:
 Test Date:2025-03-06

γ Range: 0 - 180DEG
 γ Interval: 1.0DEG
 Test System:EVERFINE GO-2000B_V1 SYSTEM V2.00.488
 Humidity:65.0%
 Test Distance:6.360m [K=1.0000]
 Remarks:

LUMINANCE LIMITATION CURVES

Test:U:24.00V I:0.2376A P:5.702W PF:1.000 Freq:0Hz Lamp Flux:30.1964x1 lm		
NAME: SF15-24V-5050-70-SPI-RGBW(4000K)-B	TYPE:	WEIGHT:
SPEC.:	DIM.: Length=1m	SERIAL No.:
MFR.: OLympia lighting	SUR.:	Shielding Angle:



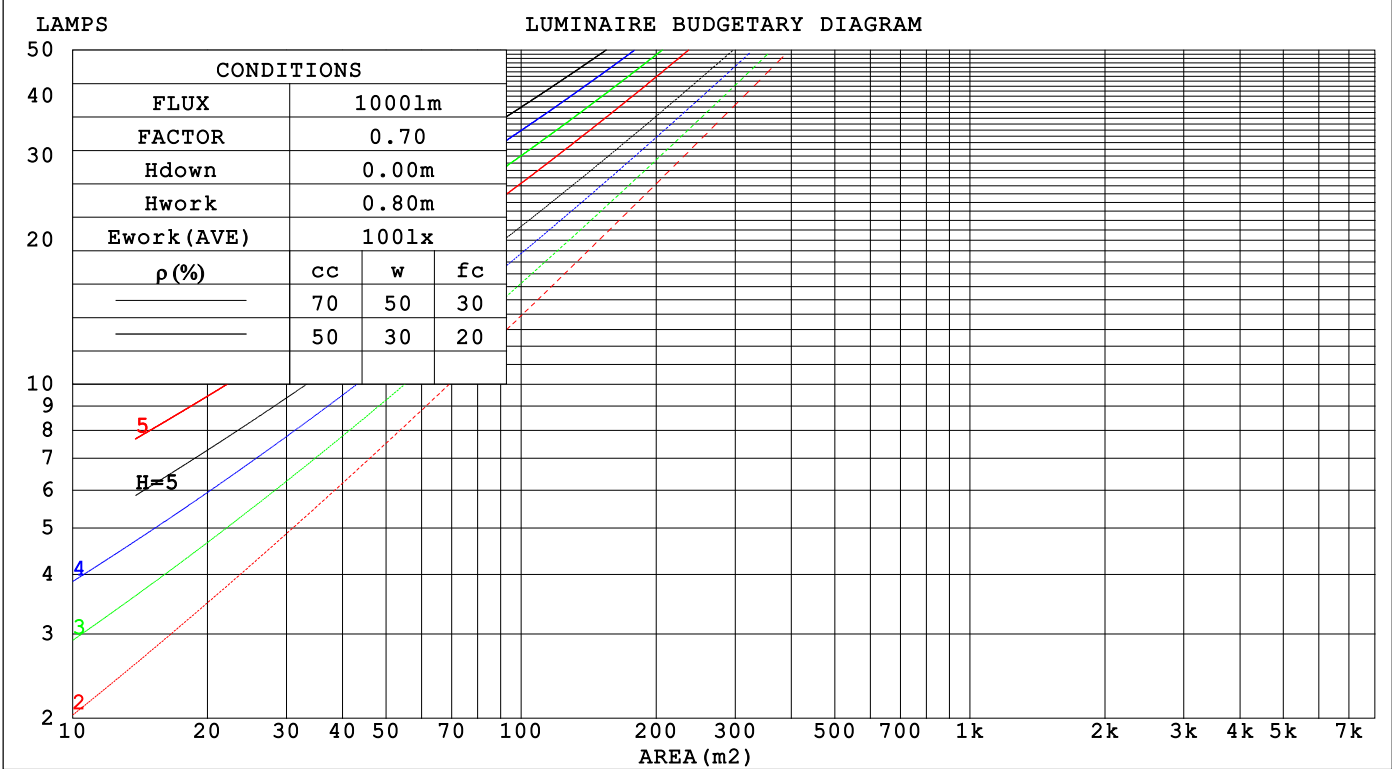
LUMINANCE cd/(m2)		
G (DEG)	C0/180	C90/270
85	404	733
80	518	716
75	597	732
70	649	742
65	690	758
60	721	773
55	748	788
50	771	803
45	792	819

C Range: 0 - 360DEG	γ Range: 0 - 180DEG
C Interval: 30.0DEG	γ Interval: 1.0DEG
Test Speed: HIGH	Test System:EVERFINE GO-2000B_V1 SYSTEM V2.00.488
Temperature:25.3℃	Humidity:65.0%
Operators:	Test Distance:6.360m [K=1.0000]
Test Date:2025-03-06	Remarks:

CU AND LUMINAIRE BUDGETARY ESTIMATE DIAGRAM

Test:U:24.00V I:0.2376A P:5.702W PF:1.000 Freq:0Hz		
Lamp Flux:30.1964x1 lm		
NAME: SF15-24V-5050-70-SPI-RGBW(4000K)-B	TYPE:	WEIGHT:
SPEC.:	DIM.: Length=1m	SERIAL No.:
MFR.: OLYMPIA lighting	SUR.:	Shielding Angle:

pcc	80%			70%			50%			30%			10%			0														
pw	50%	30%	10%	50%	30%	10%	50%	30%	10%	50%	30%	10%	50%	30%	10%	0														
pfc	20%			20%			20%			20%			20%			0														
RCR	RCR:Room Cavity Ratio															Coefficients of Utilization(CU)														
0.0	1.18	1.18	1.18	1.15	1.15	1.15	1.09	1.09	1.09	1.04	1.04	1.04	.98	.98	.98	.96														
1.0	1.03	.98	.94	1.00	.96	.93	.95	.92	.89	.91	.88	.85	.86	.84	.82	.80														
2.0	.89	.83	.77	.87	.81	.75	.83	.78	.73	.79	.75	.71	.75	.72	.69	.66														
3.0	.78	.70	.64	.77	.69	.63	.73	.67	.61	.70	.64	.60	.67	.62	.58	.56														
4.0	.69	.61	.54	.68	.60	.53	.65	.58	.52	.62	.56	.51	.59	.54	.50	.48														
5.0	.62	.53	.46	.61	.52	.46	.58	.51	.45	.56	.49	.44	.53	.48	.43	.41														
6.0	.56	.47	.40	.55	.46	.40	.52	.45	.39	.50	.44	.39	.48	.43	.38	.36														
7.0	.51	.42	.36	.50	.41	.35	.48	.40	.35	.46	.39	.34	.44	.38	.34	.32														
8.0	.46	.38	.32	.45	.37	.32	.44	.36	.31	.42	.35	.31	.41	.35	.30	.28														
9.0	.42	.34	.29	.42	.34	.28	.40	.33	.28	.39	.32	.28	.37	.32	.27	.25														
10.0	.39	.31	.26	.38	.31	.26	.37	.30	.25	.36	.30	.25	.35	.29	.25	.23														



C Range: 0 - 360DEG
C Interval: 30.0DEG
Test Speed: HIGH
Temperature:25.3℃
Operators:
Test Date:2025-03-06

γ Range: 0 - 180DEG
γ Interval: 1.0DEG
Test System:EVERFINE GO-2000B_V1 SYSTEM V2.00.488
Humidity:65.0%
Test Distance:6.360m [K=1.0000]
Remarks:

WEC AND CCEC

Test:U:24.00V I:0.2376A P:5.702W PF:1.000 Freq:0Hz Lamp Flux:30.1964x1 lm		
NAME: SF15-24V-5050-70-SPI-RGBW(4000K)-B	TYPE:	WEIGHT:
SPEC.:	DIM.: Length=1m	SERIAL No.:
MFR.: OLympia lighting	SUR.:	Shielding Angle:

pcc	80%			70%			50%			30%			10%			0	
pw	50%	30%	10%	50%	30%	10%	50%	30%	10%	50%	30%	10%	50%	30%	10%	0	
pfc	20%			20%			20%			20%			20%			0	
RCR	RCR:Room Cavity Ratio						Wall Exitance Coefficients(WEC)										
0.0																	
1.0	.314	.179	.057	.306	.175	.055	.291	.167	.053	.276	.159	.051	.263	.152	.049		
2.0	.293	.161	.049	.286	.158	.049	.272	.151	.047	.259	.146	.046	.248	.140	.044		
3.0	.270	.144	.043	.264	.141	.043	.252	.136	.041	.240	.132	.040	.230	.127	.039		
4.0	.249	.129	.038	.243	.127	.038	.232	.123	.037	.222	.119	.036	.212	.115	.035		
5.0	.230	.117	.034	.225	.115	.034	.215	.112	.033	.206	.109	.032	.197	.105	.032		
6.0	.213	.107	.031	.208	.105	.030	.200	.102	.030	.191	.099	.029	.184	.097	.029		
7.0	.198	.098	.028	.194	.097	.028	.186	.094	.027	.179	.092	.027	.172	.089	.026		
8.0	.185	.090	.025	.181	.089	.025	.174	.087	.025	.167	.085	.024	.161	.083	.024		
9.0	.173	.084	.023	.170	.083	.023	.163	.081	.023	.157	.079	.023	.151	.077	.022		
10.0	.163	.078	.022	.160	.077	.022	.154	.075	.021	.148	.074	.021	.143	.072	.021		

pcc	80%			70%			50%			30%			10%			0
pw	50%	30%	10%	50%	30%	10%	50%	30%	10%	50%	30%	10%	50%	30%	10%	0
pfc	20%			20%			20%			20%			20%			0
RCR	RCR:Room Cavity Ratio						Ceiling Cavity Exitance Coefficients (CCEC)									
0.0	.221	.221	.221	.189	.189	.189	.129	.129	.129	.074	.074	.074	.024	.024	.024	
1.0	.211	.187	.165	.181	.160	.142	.124	.110	.098	.071	.064	.057	.023	.021	.018	
2.0	.203	.163	.129	.174	.140	.111	.119	.097	.078	.069	.056	.046	.022	.018	.015	
3.0	.196	.145	.105	.168	.125	.091	.115	.087	.064	.067	.051	.038	.021	.017	.012	
4.0	.188	.132	.090	.161	.114	.078	.111	.080	.055	.064	.047	.032	.021	.015	.011	
5.0	.181	.122	.079	.155	.105	.068	.107	.074	.048	.062	.043	.029	.020	.014	.009	
6.0	.174	.114	.071	.149	.098	.062	.103	.069	.044	.060	.041	.026	.019	.013	.009	
7.0	.167	.107	.065	.143	.093	.056	.099	.065	.040	.058	.038	.024	.019	.013	.008	
8.0	.160	.101	.060	.138	.088	.053	.095	.062	.037	.056	.036	.022	.018	.012	.007	
9.0	.154	.096	.057	.133	.083	.050	.092	.059	.035	.054	.035	.021	.017	.011	.007	
10.0	.149	.092	.054	.128	.080	.047	.089	.056	.034	.052	.033	.020	.017	.011	.007	

C Range: 0 - 360DEG
C Interval: 30.0DEG
Test Speed: HIGH
Temperature:25.3℃
Operators:
Test Date:2025-03-06

γ Range: 0 - 180DEG
γ Interval: 1.0DEG
Test System:EVERFINE GO-2000B_V1 SYSTEM V2.00.488
Humidity:65.0%
Test Distance:6.360m [K=1.0000]
Remarks:

UGR(Unified Glare Rating) Table

Test:U:24.00V I:0.2376A P:5.702W PF:1.000 Freq:0Hz Lamp Flux:30.1964x1 lm											
NAME: SF15-24V-5050-70-SPI-RGBW(4000K)-B						TYPE:		WEIGHT:			
SPEC.:						DIM.: Length=1m		SERIAL No.:			
MFR.: OLympia lighting						SUR.:		Shielding Angle:			
ceiling/cavity	0.7	0.7	0.5	0.5	0.3	0.7	0.7	0.5	0.5	0.3	
walls	0.5	0.3	0.5	0.3	0.3	0.5	0.3	0.5	0.3	0.3	
working plane	0.2	0.2	0.2	0.2	0.2	0.2	0.2	0.2	0.2	0.2	
Room dimensions		Viewed crosswise					Viewed endwise				
x = 2H y = 2H	23.5	25.0	23.8	25.2	25.5	23.8	25.2	24.1	25.5	25.8	
	3H	24.9	26.3	25.3	26.6	26.9	25.4	26.7	25.7	27.0	27.4
	4H	25.5	26.8	25.9	27.1	27.5	26.1	27.4	26.5	27.7	28.0
	6H	25.9	27.1	26.3	27.5	27.8	26.7	27.9	27.1	28.2	28.6
	8H	26.0	27.2	26.4	27.5	27.9	26.9	28.0	27.3	28.4	28.8
	12H	26.1	27.2	26.5	27.6	28.0	27.0	28.2	27.5	28.5	28.9
4H	2H	24.1	25.4	24.5	25.7	26.1	24.3	25.6	24.7	25.9	26.3
	3H	25.7	26.9	26.2	27.2	27.6	26.1	27.3	26.5	27.6	28.0
	4H	26.4	27.5	26.9	27.9	28.3	27.0	28.0	27.4	28.4	28.8
	6H	27.0	27.9	27.4	28.3	28.7	27.7	28.6	28.1	29.0	29.5
	8H	27.1	28.0	27.6	28.4	28.9	28.0	28.8	28.4	29.2	29.7
	12H	27.2	28.0	27.7	28.4	28.9	28.2	29.0	28.7	29.4	29.9
8H	4H	26.7	27.6	27.2	28.0	28.5	27.2	28.1	27.7	28.5	29.0
	6H	27.4	28.1	27.9	28.6	29.1	28.1	28.8	28.6	29.3	29.8
	8H	27.6	28.3	28.2	28.8	29.3	28.5	29.1	29.0	29.6	30.1
	12H	27.8	28.3	28.3	28.8	29.4	28.8	29.3	29.3	29.8	30.4
12H	4H	26.8	27.5	27.3	28.0	28.5	27.2	28.0	27.7	28.4	28.9
	6H	27.5	28.1	28.0	28.6	29.1	28.1	28.8	28.7	29.3	29.8
	8H	27.8	28.3	28.3	28.8	29.4	28.5	29.1	29.1	29.6	30.2
Variations with the observer position at spacings(CIE Pub.117):											
S = 1.0H	+ 0.2 / - 0.2					+ 0.1 / - 0.2					
1.5H	+ 0.2 / - 0.3					+ 0.2 / - 0.3					
2.0H	+ 0.2 / - 0.3					+ 0.1 / - 0.2					

CIE Pub.117, 30.20 lm Total Lamp Luminous Flux Correct (8log(F/F0) = -12.2)
Area: 0.0115 m2

C Range: 0 - 360DEG
C Interval: 30.0DEG
Test Speed: HIGH
Temperature:25.3℃
Operators:
Test Date:2025-03-06

γ Range: 0 - 180DEG
γ Interval: 1.0DEG
Test System:EVERFINE GO-2000B_V1 SYSTEM V2.00.488
Humidity:65.0%
Test Distance:6.360m [K=1.0000]
Remarks:

UTILIZATION FACTORS TABLE

Test:U:24.00V I:0.2376A P:5.702W PF:1.000 Freq:0Hz Lamp Flux:30.1964x1 lm		
NAME: SF15-24V-5050-70-SPI-RGBW(4000K)-B	TYPE:	WEIGHT:
SPEC.:	DIM.: Length=1m	SERIAL No.:
MFR.: OLympia lighting	SUR.:	Shielding Angle:

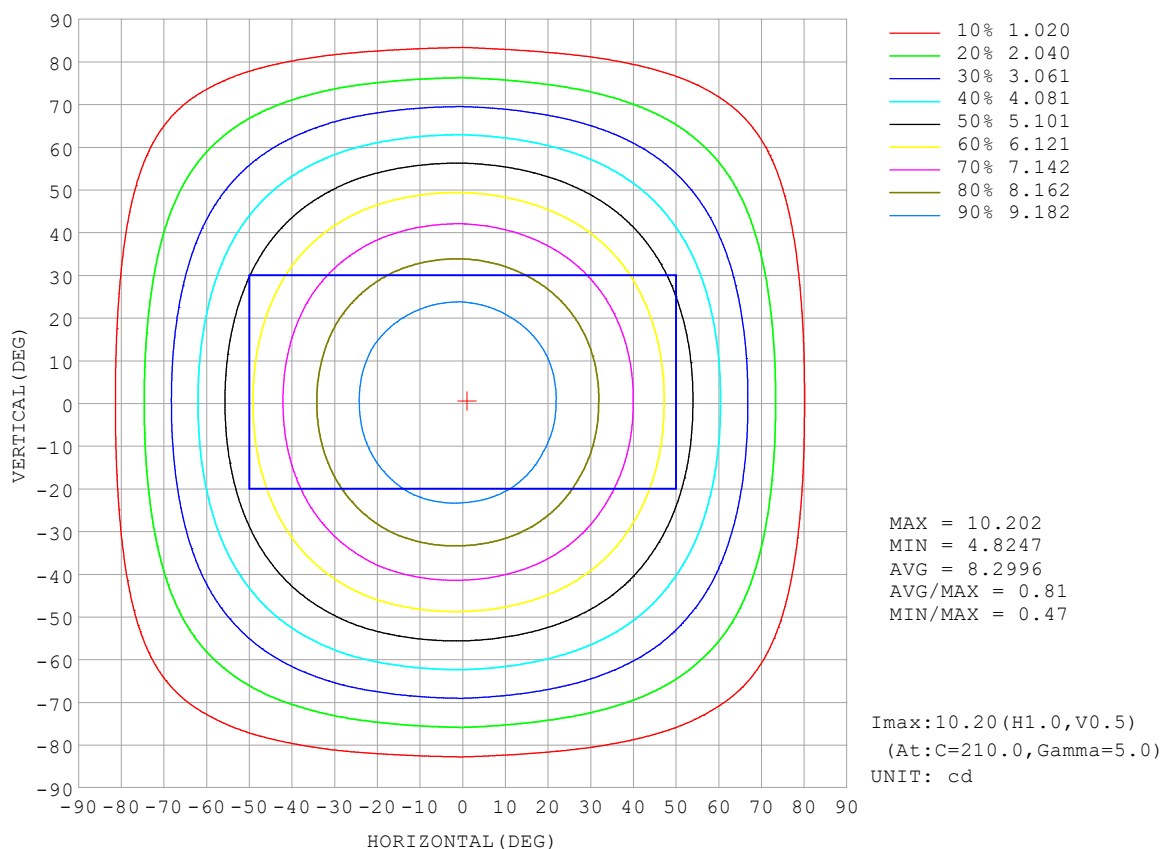
REFLECTANCE										
Ceiling	0.8	0.8	0.8	0.7	0.7	0.7	0.5	0.5	0.5	0
Walls	0.7	0.5	0.3	0.7	0.5	0.3	0.7	0.5	0.3	0
Working plane	0.2	0.2	0.2	0.2	0.2	0.2	0.2	0.2	0.2	0
ROOM INDEX	UTILIZATION FACTORS (PERCENT) $k(RI) \times RCR = 5$									
$k = 0.60$	56	45	38	55	44	38	54	44	37	31
0.80	66	55	47	65	54	47	63	53	46	39
1.00	75	63	56	73	63	56	71	64	55	47
1.25	82	71	64	80	70	63	77	68	62	54
1.50	87	76	69	85	75	69	81	73	67	59
2.00	93	85	78	91	83	77	87	81	75	67
2.50	97	89	83	95	88	82	91	85	80	71
3.00	101	94	88	98	92	87	94	88	84	75
4.00	105	99	94	102	97	92	97	93	89	79
5.00	107	102	98	105	100	96	99	96	93	82
ROOM INDEX	UF(total)									Direct
According to DIN EN 13032-2 2004			Suspended					SHRNOM = 1.25		

C Range: 0 - 360DEG
 C Interval: 30.0DEG
 Test Speed: HIGH
 Temperature: 25.3°C
 Operators:
 Test Date: 2025-03-06

γ Range: 0 - 180DEG
 γ Interval: 1.0DEG
 Test System: EVERFINE GO-2000B_V1 SYSTEM V2.00.488
 Humidity: 65.0%
 Test Distance: 6.360m [K=1.0000]
 Remarks:

ISOCANDELA DIAGRAM

Test:U:24.00V I:0.2376A P:5.702W PF:1.000 Freq:0Hz Lamp Flux:30.1964x1 lm		
NAME: SF15-24V-5050-70-SPI-RGBW(4000K)-B	TYPE:	WEIGHT:
SPEC.:	DIM.: Length=1m	SERIAL No.:
MFR.: OLympia lighting	SUR.:	Shielding Angle:

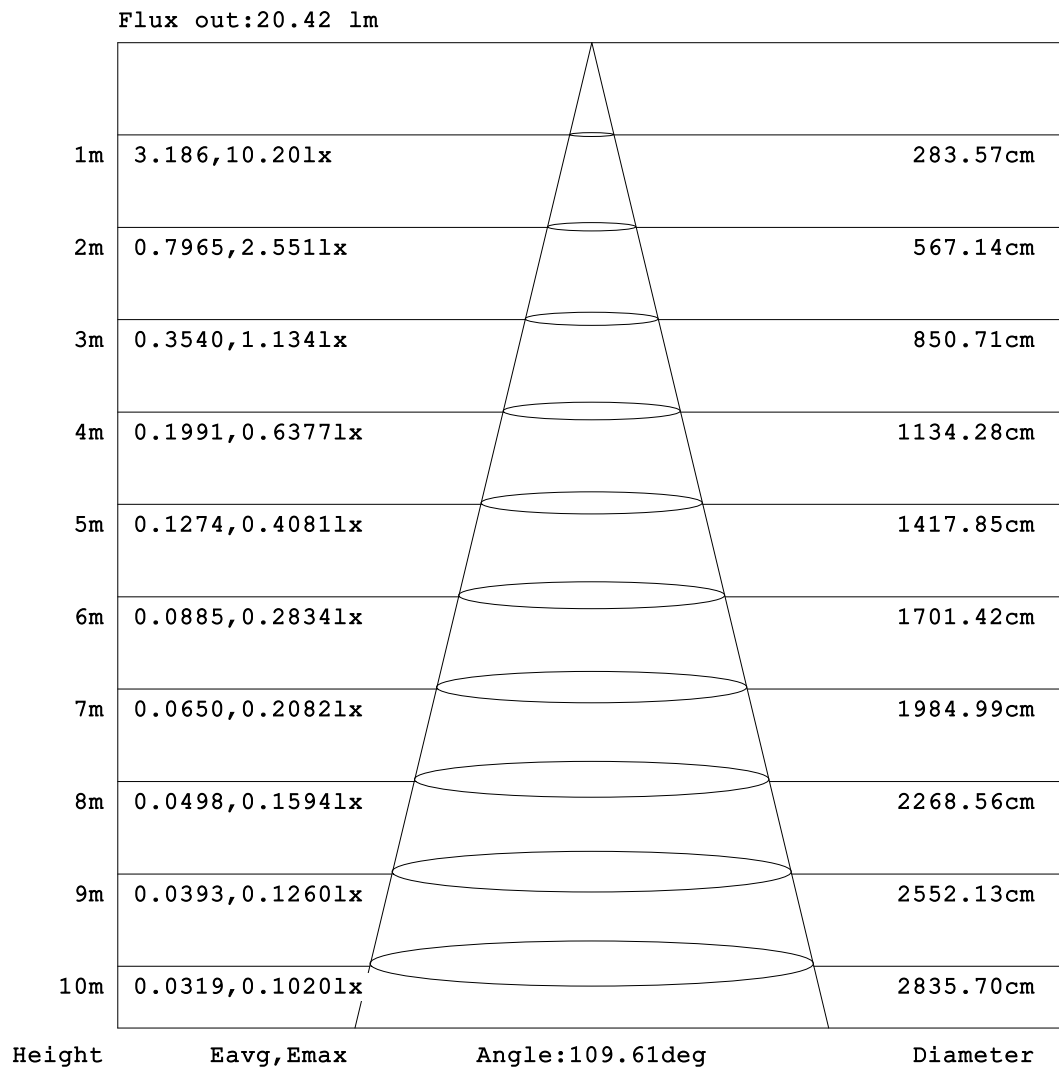


C Range: 0 - 360DEG
C Interval: 30.0DEG
Test Speed: HIGH
Temperature:25.3℃
Operators:
Test Date:2025-03-06

γ Range: 0 - 180DEG
γ Interval: 1.0DEG
Test System:EVERFINE GO-2000B_V1 SYSTEM V2.00.488
Humidity:65.0%
Test Distance:6.360m [K=1.0000]
Remarks:

AAI Figure

Test:U:24.00V I:0.2376A P:5.702W PF:1.000 Freq:0Hz Lamp Flux:30.1964x1 lm		
NAME: SF15-24V-5050-70-SPI-RGBW(4000K)-B	TYPE:	WEIGHT:
SPEC.:	DIM.: Length=1m	SERIAL No.:
MFR.: OLympia lighting	SUR.:	Shielding Angle:



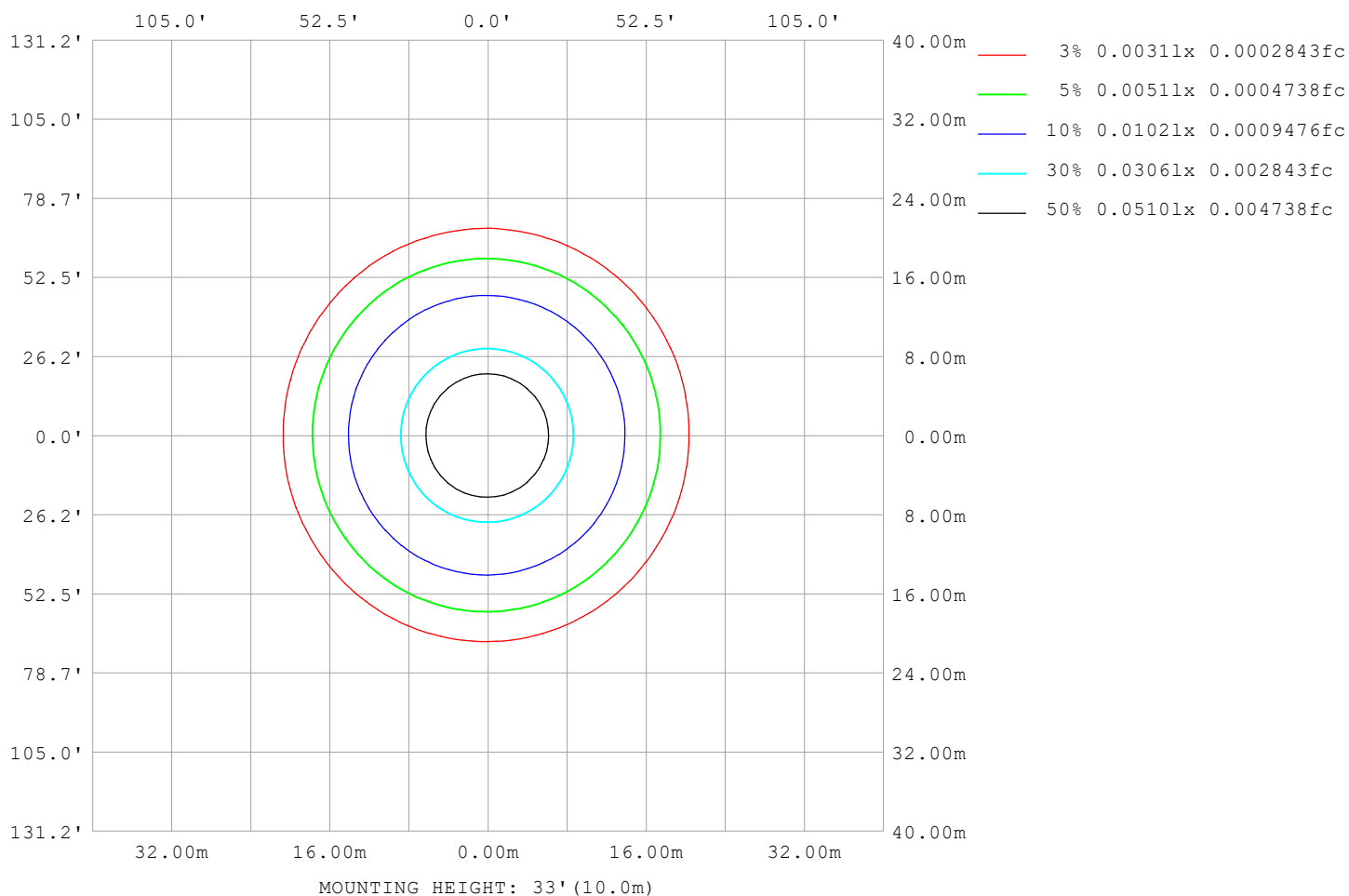
Note:The Curves indicate the illuminated area and the average illumination when the luminaire is at different distance.

C Range: 0 - 360DEG
C Interval: 30.0DEG
Test Speed: HIGH
Temperature:25.3℃
Operators:
Test Date:2025-03-06

γ Range: 0 - 180DEG
γ Interval: 1.0DEG
Test System:EVERFINE GO-2000B_V1 SYSTEM V2.00.488
Humidity:65.0%
Test Distance:6.360m [K=1.0000]
Remarks:

ISOLUX DIAGRAM

Test:U:24.00V I:0.2376A P:5.702W PF:1.000 Freq:0Hz Lamp Flux:30.1964x1 lm		
NAME: SF15-24V-5050-70-SPI-RGBW(4000K)-B	TYPE:	WEIGHT:
SPEC.:	DIM.: Length=1m	SERIAL No.:
MFR.: OLympia lighting	SUR.:	Shielding Angle:



C Range: 0 - 360DEG
C Interval: 30.0DEG
Test Speed: HIGH
Temperature: 25.3°C
Operators:
Test Date: 2025-03-06

γ Range: 0 - 180DEG
γ Interval: 1.0DEG
Test System: EVERFINE GO-2000B_V1 SYSTEM V2.00.488
Humidity: 65.0%
Test Distance: 6.360m [K=1.0000]
Remarks:

LED Avg.L Report

Test:U:24.00V I:0.2376A P:5.702W PF:1.000 Freq:0Hz Lamp Flux:30.1964x1 lm		
NAME: SF15-24V-5050-70-SPI-RGBW(4000K)-B	TYPE:	WEIGHT:
SPEC.:	DIM.: Length=1m	SERIAL No.:
MFR.: OLympia lighting	SUR.:	Shielding Angle:

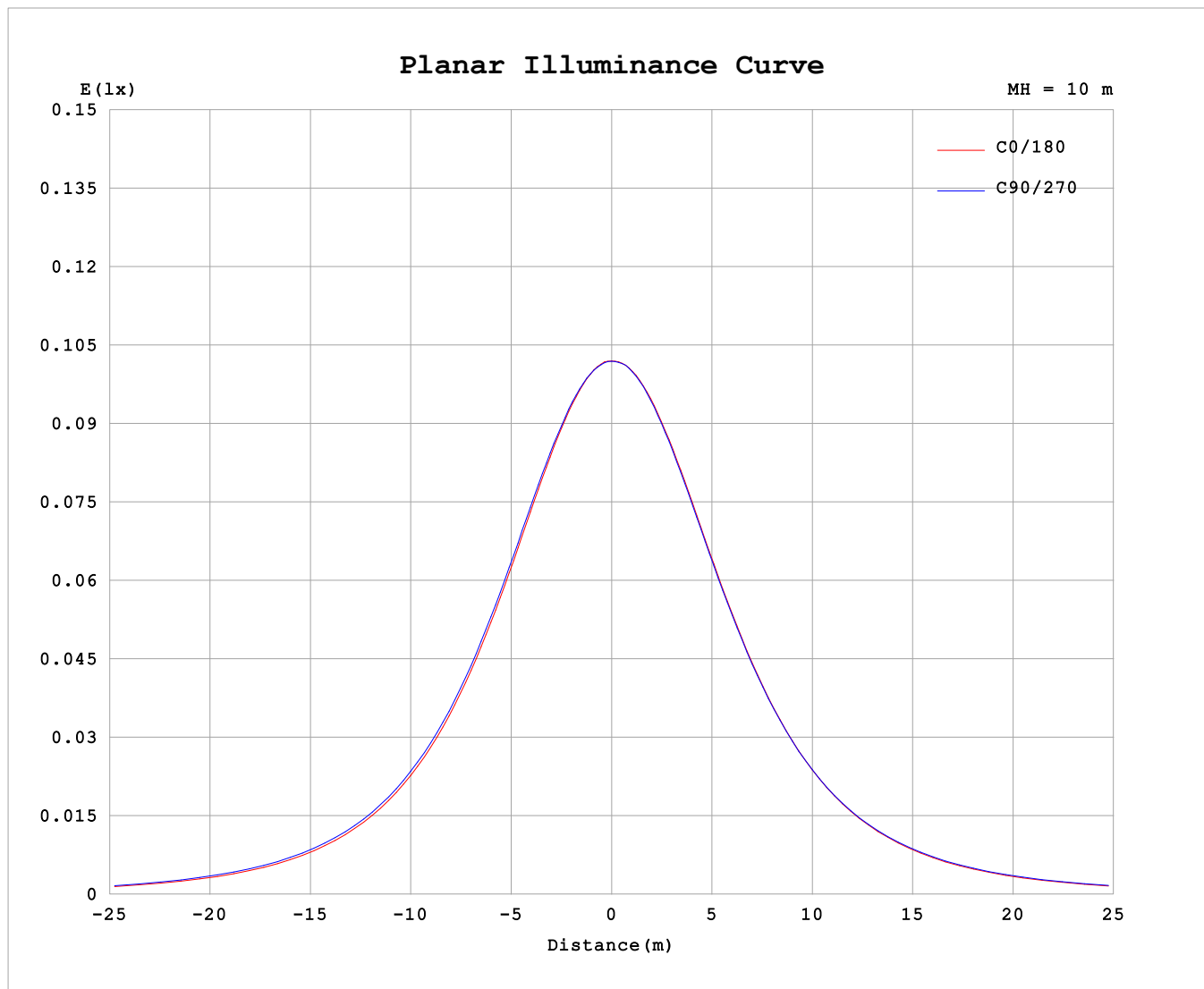
AvgL	cd/m2
L_0~180 (65) av	714
L_0~180 (75) av	630
L_0~180 (85) av	465
L_90~270 (65) av	765
L_90~270 (75) av	739
L_90~270 (85) av	768
L_45 (65) av	740
L_45 (75) av	680
L_45 (85) av	585

Standard: GB/T 29293-2012

C Range: 0 - 360DEG
C Interval: 30.0DEG
Test Speed: HIGH
Temperature:25.3℃
Operators:
Test Date:2025-03-06

γ Range: 0 - 180DEG
γ Interval: 1.0DEG
Test System:EVERFINE GO-2000B_V1 SYSTEM V2.00.488
Humidity:65.0%
Test Distance:6.360m [K=1.0000]
Remarks:

Planar Illuminance Curve



C Range: 0 - 360DEG
C Interval: 30.0DEG
Test Speed: HIGH
Temperature: 25.3 °C
Operators:
Test Date: 2025-03-06

γ Range: 0 - 180DEG
 γ Interval: 1.0DEG
Test System: EVERFINE GO-2000B_V1 SYSTEM V2.00.488
Humidity: 65.0%
Test Distance: 6.360m [K=1.0000]
Remarks:

LUMINOUS DISTRIBUTION INTENSITY DATA

Test:U:24.00V I:0.2376A P:5.702W PF:1.000 Freq:0Hz Lamp Flux:30.1964x1 lm																	
NAME: SF15-24V-5050-70-SPI-RGBW(4000K)-B									TYPE:						WEIGHT:		
SPEC.:									DIM.: Length=1m						SERIAL No.:		
MFR.: OLYMPIA lighting									SUR.:						Shielding Angle:		

Table--1

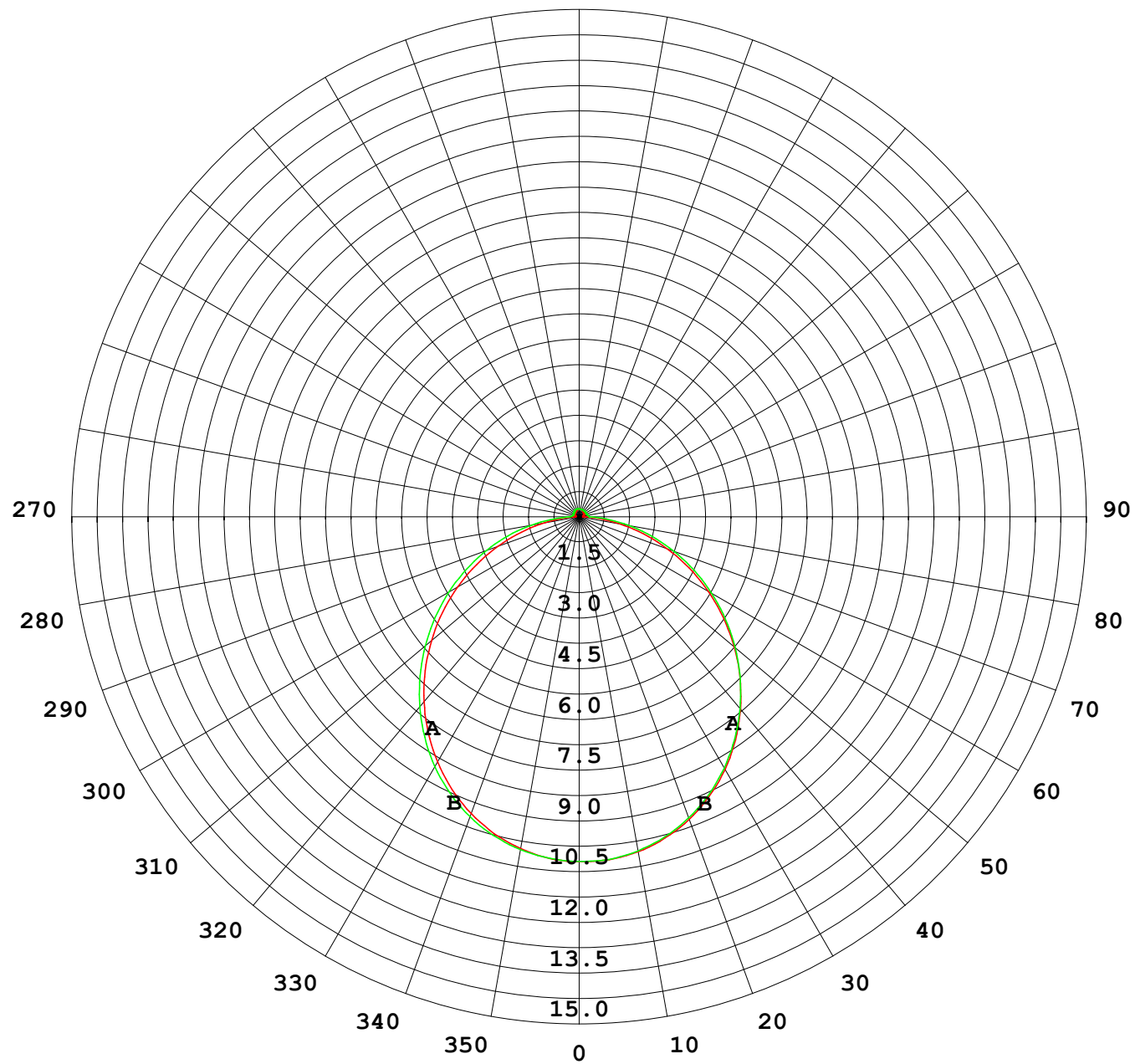
UNIT: cd

C (DEG) γ (DEG)	0	30	60	90	120	150	180	210	240	270	300	330						
0	10.2	10.2	10.2	10.2	10.2	10.2	10.2	10.2	10.2	10.2	10.2	10.2						
5	10.1	10.1	10.2	10.1	10.2	10.2	10.2	10.2	10.2	10.2	10.2	10.1	10.2					
10	9.96	9.96	9.99	10.00	10.1	10.0	10.1	10.1	10.0	10.0	9.99	9.99						
15	9.70	9.70	9.76	9.76	9.84	9.82	9.83	9.87	9.82	9.80	9.75	9.73						
20	9.33	9.35	9.42	9.44	9.52	9.51	9.52	9.55	9.51	9.48	9.42	9.39						
25	8.89	8.90	8.99	9.03	9.12	9.11	9.11	9.16	9.12	9.07	9.00	8.95						
30	8.37	8.39	8.48	8.54	8.63	8.62	8.62	8.68	8.63	8.59	8.50	8.44						
35	7.78	7.81	7.91	7.96	8.06	8.07	8.06	8.11	8.09	8.03	7.94	7.86						
40	7.13	7.16	7.26	7.34	7.43	7.43	7.42	7.49	7.46	7.41	7.31	7.21						
45	6.43	6.48	6.58	6.66	6.75	6.74	6.73	6.80	6.79	6.74	6.64	6.53						
50	5.70	5.74	5.85	5.93	6.02	6.00	5.98	6.05	6.08	6.03	5.92	5.79						
55	4.93	4.98	5.10	5.20	5.26	5.22	5.21	5.28	5.33	5.28	5.17	5.03						
60	4.14	4.19	4.34	4.44	4.49	4.41	4.41	4.48	4.55	4.53	4.40	4.25						
65	3.35	3.40	3.57	3.68	3.69	3.60	3.59	3.67	3.76	3.76	3.63	3.46						
70	2.55	2.61	2.80	2.92	2.90	2.79	2.78	2.85	2.97	2.98	2.85	2.67						
75	1.78	1.85	2.03	2.18	2.12	2.00	1.98	2.05	2.18	2.22	2.09	1.90						
80	1.03	1.11	1.29	1.43	1.37	1.25	1.22	1.30	1.42	1.49	1.35	1.16						
85	0.41	0.45	0.60	0.73	0.66	0.55	0.53	0.59	0.71	0.80	0.67	0.49						
90	0.12	0.13	0.15	0.29	0.15	0.19	0.11	0.15	0.27	0.31	0.28	0.16						
95	0.12	0.13	0.15	0.23	0.15	0.15	0.12	0.15	0.21	0.29	0.22	0.15						
100	0.12	0.14	0.15	0.20	0.15	0.14	0.12	0.15	0.21	0.27	0.22	0.15						
105	0.13	0.14	0.15	0.19	0.15	0.15	0.13	0.15	0.22	0.25	0.23	0.14						
110	0.13	0.16	0.15	0.19	0.15	0.16	0.14	0.15	0.22	0.23	0.23	0.16						
115	0.14	0.17	0.16	0.19	0.16	0.17	0.15	0.16	0.23	0.23	0.23	0.16						
120	0.16	0.18	0.17	0.20	0.17	0.18	0.16	0.17	0.23	0.23	0.23	0.17						
125	0.16	0.19	0.17	0.20	0.17	0.18	0.17	0.18	0.23	0.23	0.23	0.18						
130	0.17	0.19	0.18	0.21	0.18	0.19	0.17	0.18	0.24	0.23	0.23	0.18						
135	0.18	0.20	0.19	0.22	0.19	0.20	0.18	0.19	0.24	0.23	0.23	0.19						
140	0.19	0.21	0.20	0.22	0.20	0.21	0.19	0.19	0.24	0.23	0.24	0.19						
145	0.19	0.22	0.21	0.24	0.21	0.22	0.20	0.20	0.24	0.23	0.24	0.20						
150	0.20	0.23	0.22	0.24	0.22	0.22	0.21	0.21	0.24	0.23	0.24	0.20						
155	0.21	0.23	0.23	0.24	0.22	0.23	0.22	0.21	0.24	0.23	0.24	0.21						
160	0.22	0.23	0.23	0.24	0.22	0.24	0.23	0.22	0.24	0.23	0.24	0.22						
165	0.22	0.24	0.24	0.24	0.23	0.24	0.23	0.22	0.24	0.23	0.24	0.22						
170	0.23	0.24	0.24	0.24	0.23	0.24	0.23	0.23	0.24	0.23	0.24	0.22						
175	0.23	0.24	0.24	0.24	0.24	0.24	0.23	0.23	0.24	0.24	0.24	0.23						
180	0.23	0.24	0.24	0.24	0.24	0.24	0.23	0.23	0.24	0.24	0.24	0.24						

C Range: 0 - 360DEG
C Interval: 30.0DEG
Test Speed: HIGH
Temperature:25.3℃
Operators:
Test Date:2025-03-06

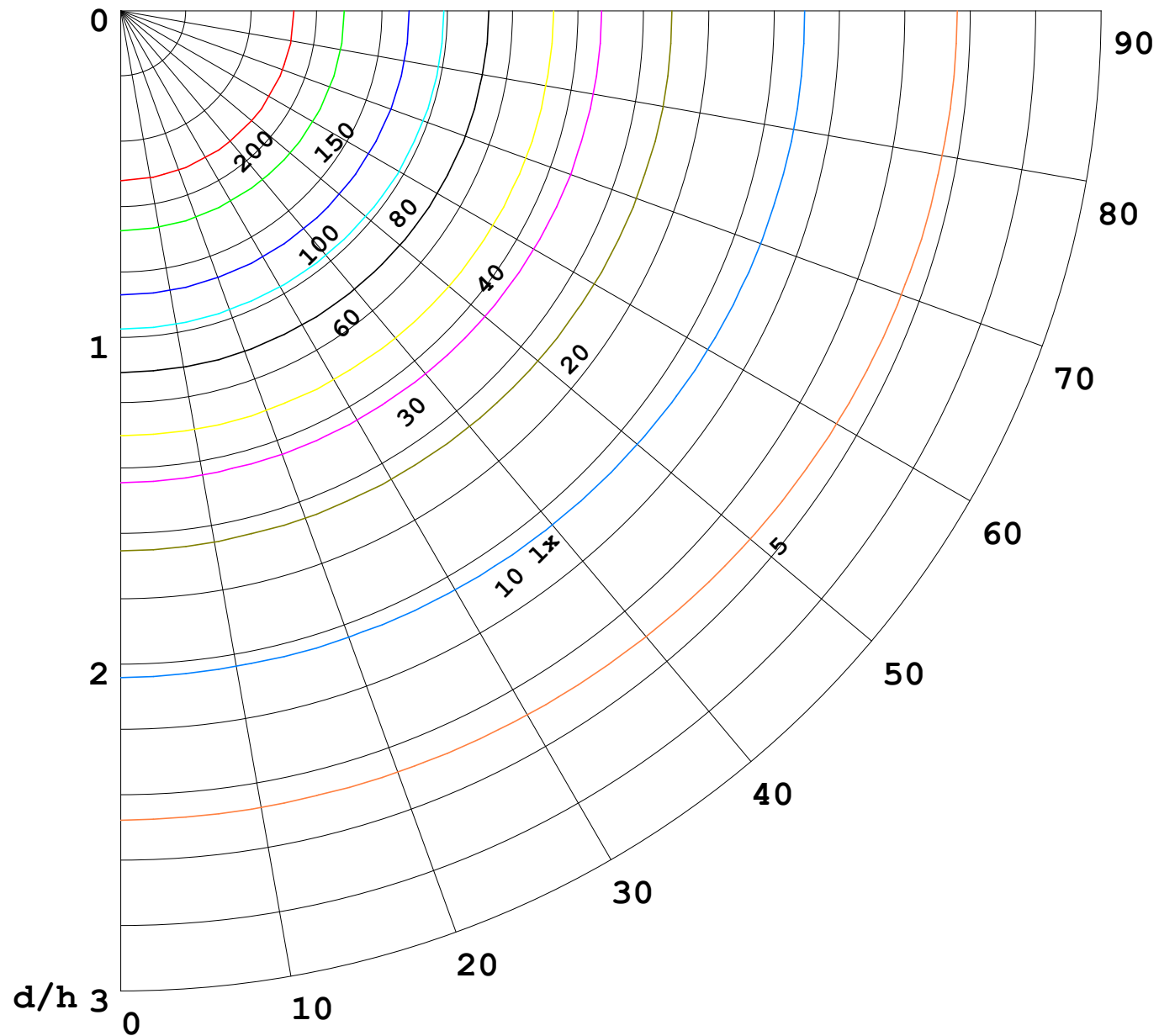
γ Range: 0 - 180DEG
γ Interval: 1.0DEG
Test System:EVERFINE GO-2000B_V1 SYSTEM V2.00.488
Humidity:65.0%
Test Distance:6.360m [K=1.0000]
Remarks:

I (cd)



1000 lm

$\kappa = 1$



F = 1000 lm
 K = 0.7
 Hcc = 0.8 m
 Hfc = 0.0 m
 Eave = 100 lx

	Pcc	Pw	Pfc
—————	70	50	30
—————	50	30	20

