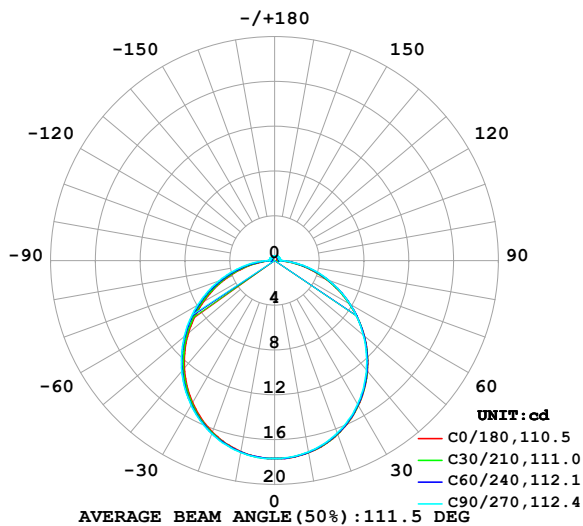


## LUMINAIRE PHOTOMETRIC TEST REPORT

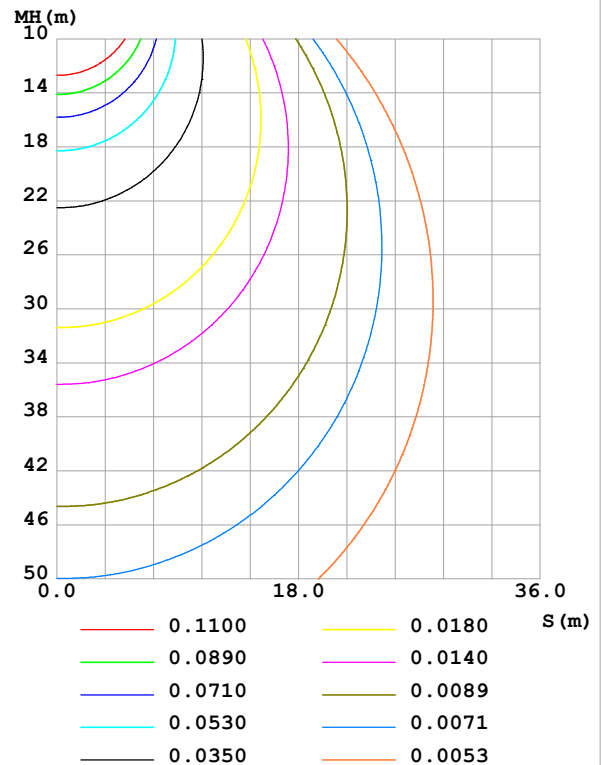
Test:U:24.00V I:0.4759A P:11.42W PF:1.000 Freq:0Hz Lamp Flux:53.2317x1 lm		
NAME: SF15-24V-5050-70-SPI-RGBW(3000K)-R	TYPE:	WEIGHT:
SPEC.:	DIM.: Length=1m	SERIAL No.:
MFR.: OLympia lighting	SUR.:	Shielding Angle:

DATA OF LAMP		PHOTOMETRIC DATA				Eff: 4.66 lm/W
MODEL	5050	I <sub>max</sub> (cd)	17.69	S/MH(C0/180)	1.24	
NOMINAL POWER(W)		LOR(%)	100.0	S/MH(C90/270)	1.25	
RATED VOLTAGE(V)	24	TOTAL FLUX(lm)	53.232	η UP,DN(C0-180)	2.3,47.7	
NOMINAL FLUX(lm)	53.2317	CIE CLASS	DIRECT	η UP,DN(C180-360)	2.1,47.9	
LAMPS INSIDE	1	η up (%)	4.4	CIBSE SHR NOM	1.25	
TEST VOLTAGE(V)		η down (%)	95.6	CIBSE SHR MAX	1.35	

LUMINOUS INTENSITY DISTRIBUTION DIAGRAM



C0 PLANE ISOLUX DIAGRAM (UNIT:lx)



C Range: 0 - 360DEG  
C Interval: 30.0DEG  
Test Speed: HIGH  
Temperature:25.3℃  
Operators:  
Test Date:2025-03-18

γ Range: 0 - 180DEG  
γ Interval: 1.0DEG  
Test System:EVERFINE GO-2000B\_V1 SYSTEM V2.00.488  
Humidity:65.0%  
Test Distance:6.360m [K=1.0000]  
Remarks:

## ZONAL FLUX DIAGRAM

## ZONAL FLUX DIAGRAM:

$\gamma$	C0	C45	C90	C135	C180	C225	C270	C315	$\gamma$	$\Phi$ zone	$\Phi$ total	%lum, lamp
10	17.43	17.40	17.35	17.34	17.32	17.37	17.41	17.42	0- 10	1.674	1.674	3.15,3.15
20	16.50	16.46	16.39	16.34	16.29	16.39	16.46	16.51	10- 20	4.792	6.466	12.1,12.1
30	14.96	14.92	14.83	14.75	14.67	14.82	14.92	14.99	20- 30	7.239	13.70	25.7,25.7
40	12.90	12.86	12.77	12.67	12.55	12.76	12.90	12.96	30- 40	8.684	22.39	42.1,42.1
50	10.45	10.43	10.36	10.20	10.05	10.31	10.53	10.55	40- 50	8.963	31.35	58.9,58.9
60	7.740	7.754	7.764	7.512	7.334	7.639	7.927	7.885	50- 60	8.090	39.44	74.1,74.1
70	4.934	5.022	5.129	4.765	4.545	4.877	5.263	5.140	60- 70	6.259	45.70	85.9,85.9
80	2.291	2.423	2.619	2.171	1.949	2.252	2.715	2.507	70- 80	3.838	49.54	93.1,93.1
90	0.3349	0.4055	0.4970	0.4105	0.2847	0.3505	0.4953	0.3729	80- 90	1.345	50.88	95.6,95.6
100	0.2533	0.3534	0.4796	0.3902	0.2677	0.3187	0.4738	0.2732	90-100	0.3812	51.27	96.3,96.3
110	0.2619	0.3620	0.4652	0.3988	0.2850	0.3202	0.4738	0.2847	100-110	0.3679	51.63	97,97
120	0.2965	0.3765	0.4565	0.4104	0.3109	0.3332	0.4652	0.3063	110-120	0.3562	51.99	97.7,97.7
130	0.3281	0.3938	0.4565	0.4220	0.3368	0.3505	0.4334	0.3266	120-130	0.3337	52.32	98.3,98.3
140	0.3540	0.4096	0.4565	0.4277	0.3685	0.3707	0.4161	0.3439	130-140	0.2981	52.62	98.9,98.9
150	0.3828	0.4284	0.4594	0.4350	0.4001	0.3952	0.4074	0.3685	140-150	0.2508	52.87	99.3,99.3
160	0.4116	0.4428	0.4594	0.4451	0.4318	0.4240	0.4074	0.4047	150-160	0.1933	53.07	99.7,99.7
170	0.4375	0.4500	0.4565	0.4480	0.4490	0.4471	0.4420	0.4422	160-170	0.1237	53.19	99.9,99.9
180	0.4490	0.4529	0.4565	0.4538	0.4462	0.4514	0.4565	0.4523	170-180	0.0428	53.23	100,100
DEG	LUMINOUS INTENSITY:cd									UNIT:lm		

Conical surface Flux(90deg): 26.91 lm

%lum = 50.6%

%lamp = 50.6%

Conical surface Flux(130deg): 42.848 lm

%lum = 80.5%

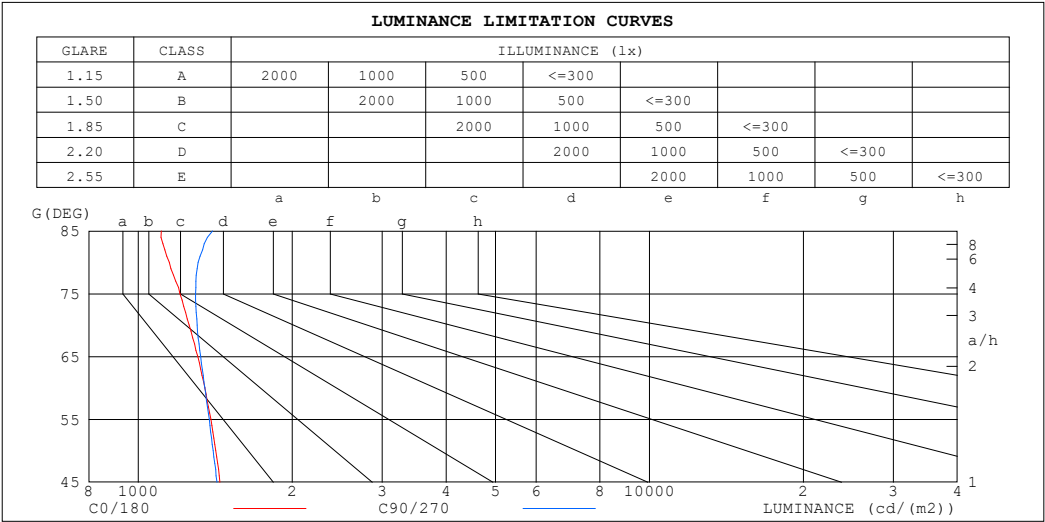
%lamp = 80.5%

C Range: 0 - 360DEG  
 C Interval: 30.0DEG  
 Test Speed: HIGH  
 Temperature:25.3℃  
 Operators:  
 Test Date:2025-03-18

$\gamma$  Range: 0 - 180DEG  
 $\gamma$  Interval: 1.0DEG  
 Test System:EVERFINE GO-2000B\_V1 SYSTEM V2.00.488  
 Humidity:65.0%  
 Test Distance:6.360m [K=1.0000]  
 Remarks:

LUMINANCE LIMITATION CURVES

Test:U:24.00V I:0.4759A P:11.42W PF:1.000 Freq:0Hz Lamp Flux:53.2317x1 lm		
NAME: SF15-24V-5050-70-SPI-RGBW(3000K)-R	TYPE:	WEIGHT:
SPEC.:	DIM.: Length=1m	SERIAL No.:
MFR.: OLympia lighting	SUR.:	Shielding Angle:



LUMINANCE cd/(m2)		
G (DEG)	C0/180	C90/270
85	1108	1397
80	1150	1310
75	1205	1294
70	1258	1303
65	1307	1324
60	1350	1349
55	1386	1376
50	1417	1400
45	1444	1424

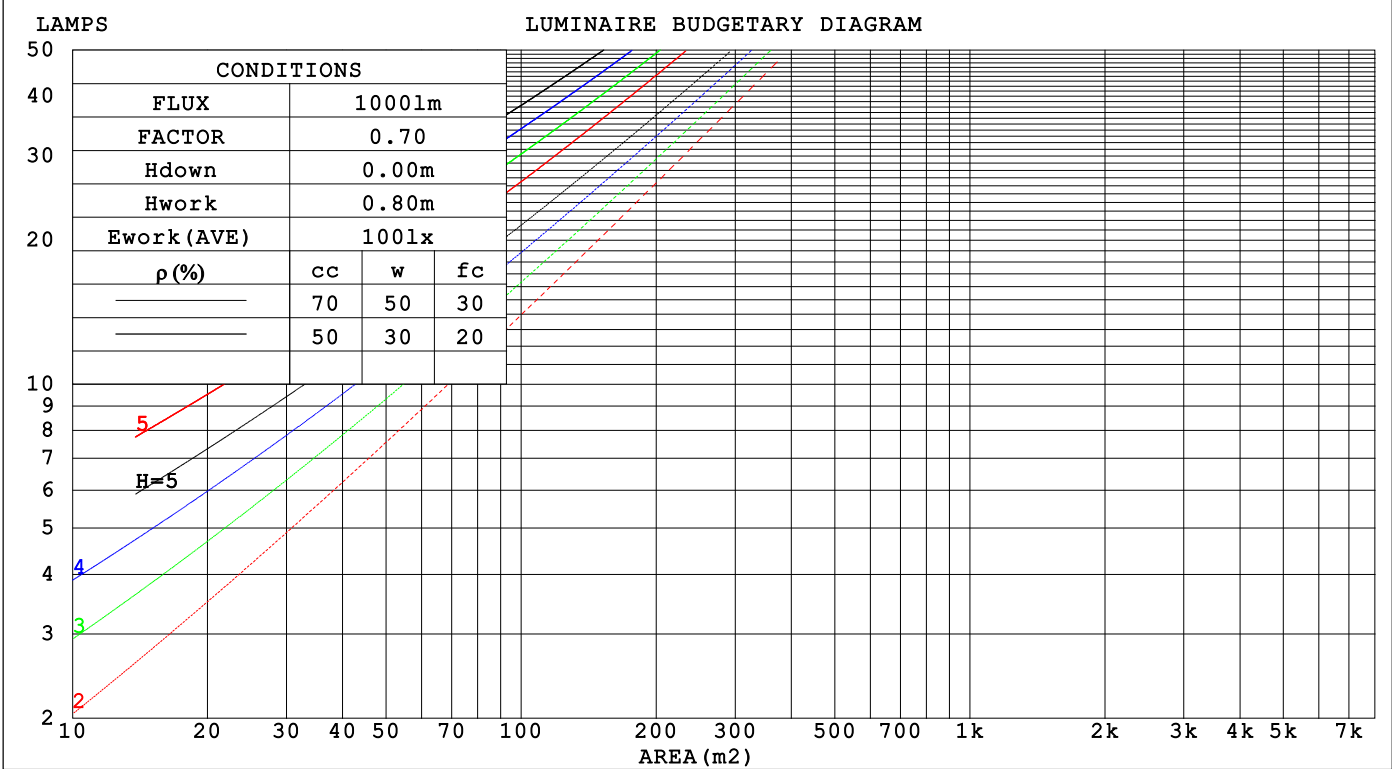
C Range: 0 - 360DEG  
C Interval: 30.0DEG  
Test Speed: HIGH  
Temperature:25.3℃  
Operators:  
Test Date:2025-03-18

γ Range: 0 - 180DEG  
γ Interval: 1.0DEG  
Test System:EVERFINE GO-2000B\_V1 SYSTEM V2.00.488  
Humidity:65.0%  
Test Distance:6.360m [K=1.0000]  
Remarks:

CU AND LUMINAIRE BUDGETARY ESTIMATE DIAGRAM

Test:U:24.00V I:0.4759A P:11.42W PF:1.000 Freq:0Hz		
Lamp Flux:53.2317x1 lm		
NAME: SF15-24V-5050-70-SPI-RGBW(3000K)-R	TYPE:	WEIGHT:
SPEC.:	DIM.: Length=1m	SERIAL No.:
MFR.: OLYMPIA lighting	SUR.:	Shielding Angle:

pcc	80%			70%			50%			30%			10%			0
pw	50%	30%	10%	50%	30%	10%	50%	30%	10%	50%	30%	10%	50%	30%	10%	0
pfc	20%			20%			20%			20%			20%			0
RCR	RCR:Room Cavity Ratio															



C Range: 0 - 360DEG  
C Interval: 30.0DEG  
Test Speed: HIGH  
Temperature:25.3℃  
Operators:  
Test Date:2025-03-18

γ Range: 0 - 180DEG  
γ Interval: 1.0DEG  
Test System:EVERFINE GO-2000B\_V1 SYSTEM V2.00.488  
Humidity:65.0%  
Test Distance:6.360m [K=1.0000]  
Remarks:

## WEC AND CCEC

Test:U:24.00V I:0.4759A P:11.42W PF:1.000 Freq:0Hz Lamp Flux:53.2317x1 lm		
NAME: SF15-24V-5050-70-SPI-RGBW(3000K)-R	TYPE:	WEIGHT:
SPEC.:	DIM.: Length=1m	SERIAL No.:
MFR.: OLympia lighting	SUR.:	Shielding Angle:

pcc	80%			70%			50%			30%			10%			0														
pw	50%	30%	10%	50%	30%	10%	50%	30%	10%	50%	30%	10%	50%	30%	10%	0														
pfc	20%			20%			20%			20%			20%			0														
RCR	RCR:Room Cavity Ratio															Wall Exitance Coefficients(WEC)														
0.0																														
1.0	.317	.180	.057	.309	.176	.056	.293	.168	.054	.279	.161	.052	.265	.154	.050															
2.0	.295	.162	.050	.287	.158	.049	.273	.152	.047	.260	.146	.046	.248	.141	.044															
3.0	.271	.144	.043	.265	.142	.043	.252	.137	.042	.241	.132	.040	.230	.127	.039															
4.0	.250	.130	.038	.244	.128	.038	.233	.123	.037	.222	.119	.036	.212	.115	.035															
5.0	.230	.117	.034	.225	.116	.034	.215	.112	.033	.206	.109	.032	.197	.105	.032															
6.0	.213	.107	.031	.209	.105	.030	.200	.102	.030	.191	.099	.029	.183	.096	.029															
7.0	.198	.098	.028	.194	.097	.028	.186	.094	.027	.178	.091	.027	.171	.089	.026															
8.0	.185	.090	.025	.181	.089	.025	.174	.087	.025	.167	.085	.024	.160	.082	.024															
9.0	.173	.084	.023	.170	.083	.023	.163	.081	.023	.157	.079	.023	.151	.077	.022															
10.0	.163	.078	.022	.160	.077	.022	.154	.075	.021	.148	.073	.021	.143	.072	.021															

pcc	80%			70%			50%			30%			10%			0
pw	50%	30%	10%	50%	30%	10%	50%	30%	10%	50%	30%	10%	50%	30%	10%	0
pfc	20%			20%			20%			20%			20%			0
RCR	RCR:Room Cavity Ratio						Ceiling Cavity Exitance Coefficients (CCEC)									
0.0	.224	.224	.224	.192	.192	.192	.131	.131	.131	.075	.075	.075	.024	.024	.024	
1.0	.215	.190	.168	.184	.163	.144	.126	.112	.100	.072	.065	.058	.023	.021	.019	
2.0	.207	.166	.132	.177	.143	.114	.121	.099	.079	.070	.058	.047	.022	.019	.015	
3.0	.199	.149	.108	.171	.128	.094	.117	.089	.066	.068	.052	.039	.022	.017	.013	
4.0	.191	.135	.093	.164	.117	.081	.113	.082	.057	.065	.048	.034	.021	.016	.011	
5.0	.184	.125	.082	.158	.108	.071	.109	.076	.050	.063	.044	.030	.020	.014	.010	
6.0	.177	.117	.074	.152	.101	.064	.105	.071	.046	.061	.042	.027	.020	.014	.009	
7.0	.170	.110	.068	.146	.095	.059	.101	.067	.042	.059	.039	.025	.019	.013	.008	
8.0	.164	.104	.064	.141	.090	.055	.097	.064	.039	.057	.037	.023	.018	.012	.008	
9.0	.157	.099	.060	.136	.086	.052	.094	.061	.037	.055	.036	.022	.018	.012	.007	
10.0	.152	.095	.057	.131	.083	.050	.091	.058	.036	.053	.034	.021	.017	.011	.007	

C Range: 0 - 360DEG  
C Interval: 30.0DEG  
Test Speed: HIGH  
Temperature:25.3℃  
Operators:  
Test Date:2025-03-18

γ Range: 0 - 180DEG  
γ Interval: 1.0DEG  
Test System:EVERFINE GO-2000B\_V1 SYSTEM V2.00.488  
Humidity:65.0%  
Test Distance:6.360m [K=1.0000]  
Remarks:

UGR(Unified Glare Rating) Table

Test:U:24.00V I:0.4759A P:11.42W PF:1.000 Freq:0Hz Lamp Flux:53.2317x1 lm											
NAME: SF15-24V-5050-70-SPI-RGBW(3000K)-R						TYPE:		WEIGHT:			
SPEC.:						DIM.: Length=1m		SERIAL No.:			
MFR.: OLympia lighting						SUR.:		Shielding Angle:			
ceiling/cavity	0.7	0.7	0.5	0.5	0.3	0.7	0.7	0.5	0.5	0.3	
walls	0.5	0.3	0.5	0.3	0.3	0.5	0.3	0.5	0.3	0.3	
working plane	0.2	0.2	0.2	0.2	0.2	0.2	0.2	0.2	0.2	0.2	
Room dimensions		Viewed crosswise					Viewed endwise				
x = 2H y = 2H	2H	22.8	24.2	23.1	24.5	24.8	22.8	24.2	23.1	24.5	24.8
	3H	24.3	25.7	24.7	26.0	26.3	24.4	25.8	24.8	26.1	26.4
	4H	25.0	26.3	25.4	26.6	27.0	25.1	26.4	25.5	26.7	27.1
	6H	25.5	26.7	25.9	27.1	27.4	25.7	26.9	26.1	27.3	27.7
	8H	25.7	26.9	26.1	27.2	27.6	26.0	27.2	26.4	27.5	27.9
	12H	25.8	26.9	26.2	27.3	27.7	26.2	27.3	26.6	27.7	28.1
4H	2H	23.4	24.7	23.8	25.0	25.4	23.4	24.7	23.8	25.0	25.4
	3H	25.1	26.3	25.6	26.6	27.0	25.2	26.3	25.6	26.7	27.1
	4H	25.9	27.0	26.4	27.4	27.8	26.1	27.1	26.5	27.5	27.9
	6H	26.6	27.5	27.0	27.9	28.4	26.8	27.7	27.3	28.2	28.6
	8H	26.8	27.7	27.3	28.1	28.6	27.1	28.0	27.6	28.4	28.9
	12H	27.0	27.8	27.5	28.3	28.8	27.4	28.2	27.9	28.6	29.1
8H	4H	26.2	27.1	26.7	27.5	28.0	26.4	27.2	26.8	27.7	28.1
	6H	27.1	27.8	27.6	28.3	28.8	27.3	28.0	27.8	28.5	29.0
	8H	27.4	28.0	27.9	28.5	29.1	27.7	28.3	28.2	28.8	29.4
	12H	27.7	28.2	28.2	28.8	29.3	28.1	28.6	28.6	29.2	29.7
12H	4H	26.3	27.0	26.8	27.5	28.0	26.4	27.2	26.9	27.6	28.1
	6H	27.1	27.8	27.7	28.3	28.8	27.4	28.0	27.9	28.5	29.0
	8H	27.5	28.1	28.1	28.6	29.2	27.8	28.4	28.4	28.9	29.5
Variations with the observer position at spacings(CIE Pub.117):											
S = 1.0H		+ 0.1 / - 0.2					+ 0.1 / - 0.2				
1.5H		+ 0.2 / - 0.3					+ 0.2 / - 0.3				
2.0H		+ 0.1 / - 0.3					+ 0.1 / - 0.3				

CIE Pub.117, 53.23 lm Total Lamp Luminous Flux Correct (8log(F/F0) = -10.2)  
Area: 0.0115 m2

C Range: 0 - 360DEG  
C Interval: 30.0DEG  
Test Speed: HIGH  
Temperature:25.3℃  
Operators:  
Test Date:2025-03-18

γ Range: 0 - 180DEG  
γ Interval: 1.0DEG  
Test System:EVERFINE GO-2000B\_V1 SYSTEM V2.00.488  
Humidity:65.0%  
Test Distance:6.360m [K=1.0000]  
Remarks:

## UTILIZATION FACTORS TABLE

Test:U:24.00V I:0.4759A P:11.42W PF:1.000 Freq:0Hz Lamp Flux:53.2317x1 lm		
NAME: SF15-24V-5050-70-SPI-RGBW(3000K)-R	TYPE:	WEIGHT:
SPEC.:	DIM.: Length=1m	SERIAL No.:
MFR.: OLympia lighting	SUR.:	Shielding Angle:

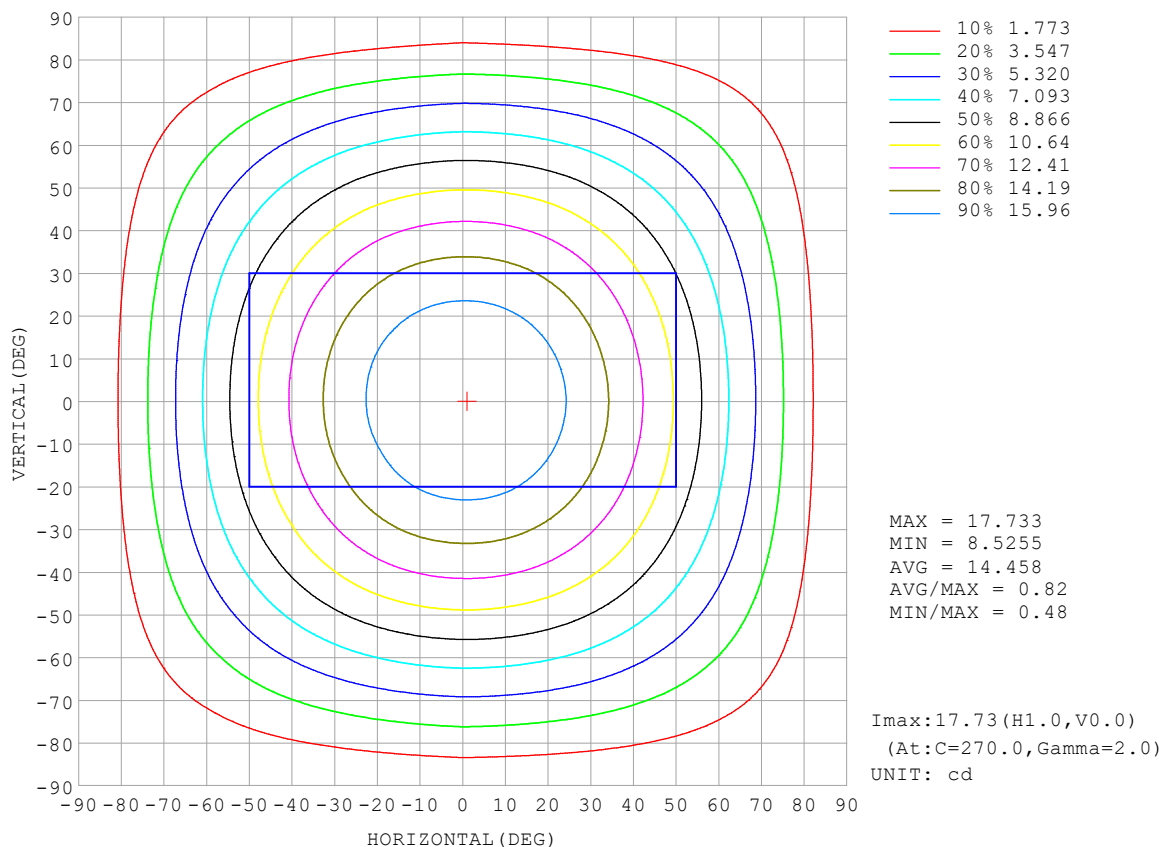
REFLECTANCE										
Ceiling	0.8	0.8	0.8	0.7	0.7	0.7	0.5	0.5	0.5	0
Walls	0.7	0.5	0.3	0.7	0.5	0.3	0.7	0.5	0.3	0
Working plane	0.2	0.2	0.2	0.2	0.2	0.2	0.2	0.2	0.2	0
ROOM INDEX	UTILIZATION FACTORS (PERCENT) $k(RI) \times RCR = 5$									
$k = 0.60$	56	44	37	55	44	37	54	43	37	30
0.80	66	54	47	65	54	46	63	53	46	39
1.00	74	63	55	73	62	55	70	63	54	47
1.25	81	70	63	79	70	63	76	68	61	54
1.50	86	76	69	84	75	68	81	73	67	58
2.00	93	84	77	91	83	77	87	80	75	66
2.50	97	89	83	95	87	82	90	84	79	70
3.00	100	93	87	98	91	86	93	88	83	74
4.00	105	99	94	102	96	92	97	92	89	78
5.00	107	102	98	104	100	96	99	95	92	81
ROOM INDEX	UF (total)									Direct
According to DIN EN 13032-2 2004			Suspended					SHRNOM = 1.25		

C Range: 0 - 360DEG  
 C Interval: 30.0DEG  
 Test Speed: HIGH  
 Temperature: 25.3 °C  
 Operators:  
 Test Date: 2025-03-18

γ Range: 0 - 180DEG  
 γ Interval: 1.0DEG  
 Test System: EVERFINE GO-2000B\_V1 SYSTEM V2.00.488  
 Humidity: 65.0%  
 Test Distance: 6.360m [K=1.0000]  
 Remarks:

## ISOCANDELA DIAGRAM

Test:U:24.00V I:0.4759A P:11.42W PF:1.000 Freq:0Hz Lamp Flux:53.2317x1 lm		
NAME: SF15-24V-5050-70-SPI-RGBW(3000K)-R	TYPE:	WEIGHT:
SPEC.:	DIM.: Length=1m	SERIAL No.:
MFR.: OLympia lighting	SUR.:	Shielding Angle:



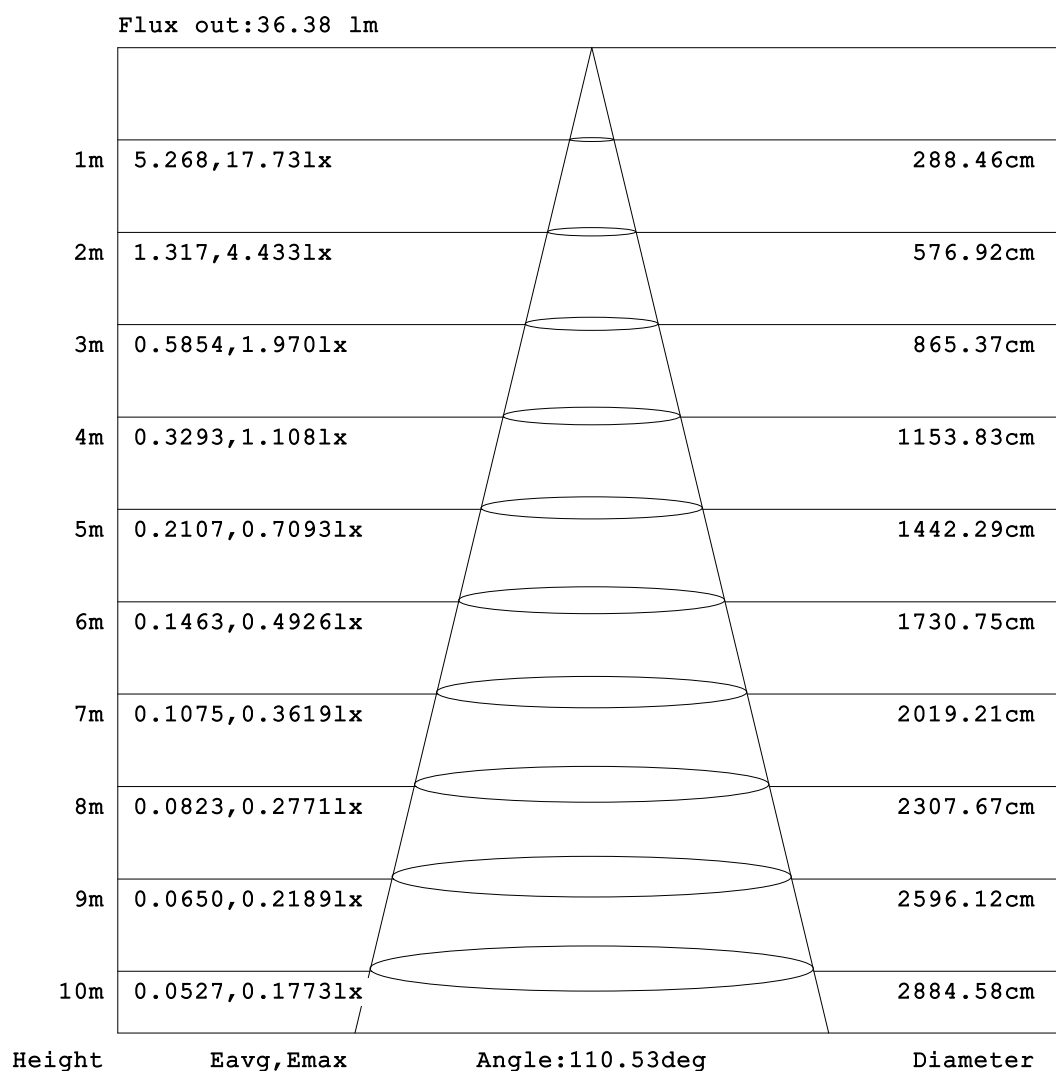
C Range: 0 - 360DEG  
C Interval: 30.0DEG  
Test Speed: HIGH  
Temperature:25.3℃  
Operators:  
Test Date:2025-03-18

γ Range: 0 - 180DEG  
γ Interval: 1.0DEG  
Test System:EVERFINE GO-2000B\_V1 SYSTEM V2.00.488  
Humidity:65.0%  
Test Distance:6.360m [K=1.0000]  
Remarks:



## AAI Figure

Test:U:24.00V I:0.4759A P:11.42W PF:1.000 Freq:0Hz Lamp Flux:53.2317x1 lm		
NAME: SF15-24V-5050-70-SPI-RGBW(3000K)-R	TYPE:	WEIGHT:
SPEC.:	DIM.: Length=1m	SERIAL No.:
MFR.: OLympia lighting	SUR.:	Shielding Angle:



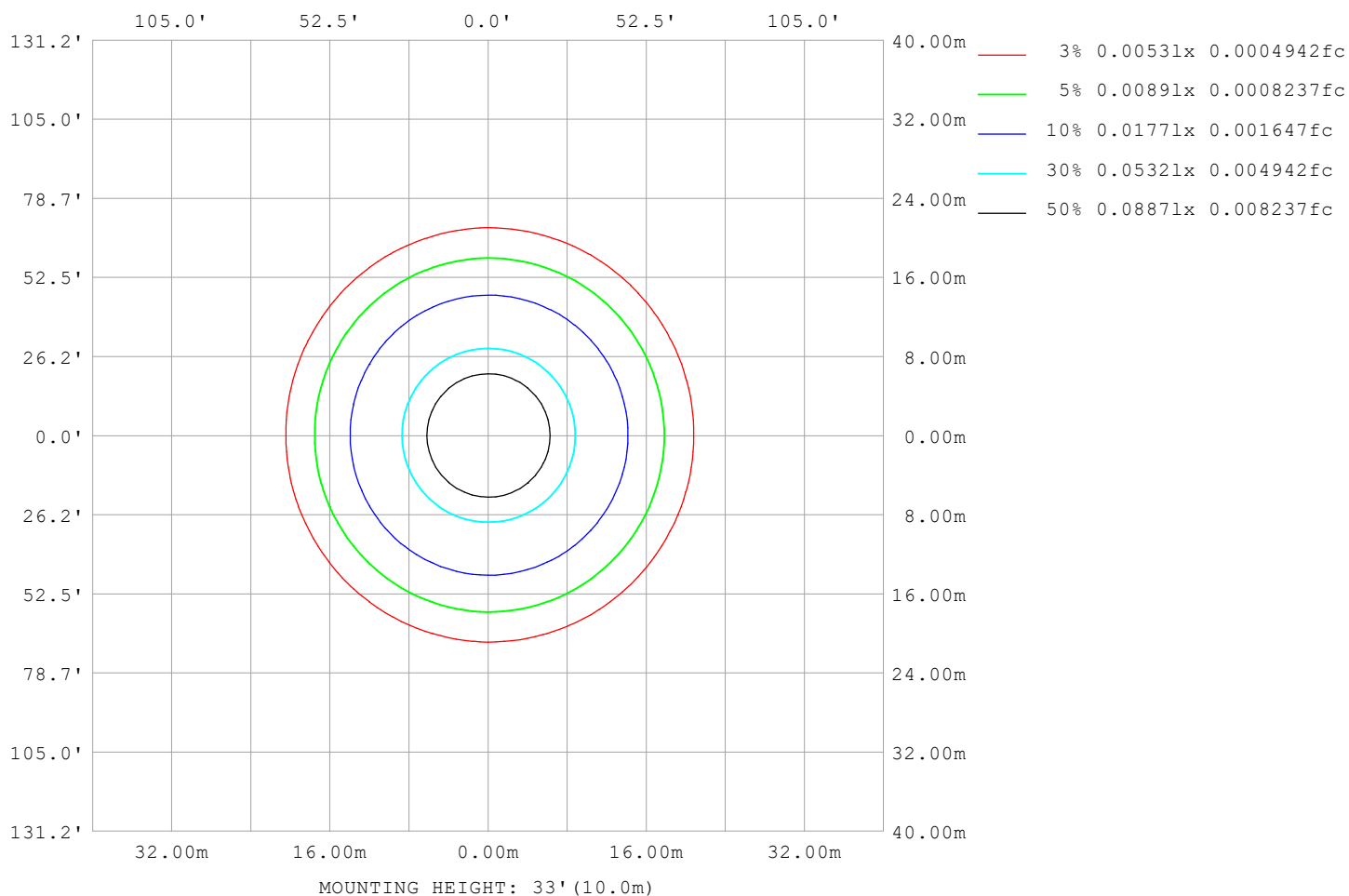
Note:The Curves indicate the illuminated area and the average illumination when the luminaire is at different distance.

C Range: 0 - 360DEG  
C Interval: 30.0DEG  
Test Speed: HIGH  
Temperature:25.3℃  
Operators:  
Test Date:2025-03-18

γ Range: 0 - 180DEG  
γ Interval: 1.0DEG  
Test System:EVERFINE GO-2000B\_V1 SYSTEM V2.00.488  
Humidity:65.0%  
Test Distance:6.360m [K=1.0000]  
Remarks:

## ISOLUX DIAGRAM

Test:U:24.00V I:0.4759A P:11.42W PF:1.000 Freq:0Hz Lamp Flux:53.2317x1 lm		
NAME: SF15-24V-5050-70-SPI-RGBW(3000K)-R	TYPE:	WEIGHT:
SPEC.:	DIM.: Length=1m	SERIAL No.:
MFR.: OLympia lighting	SUR.:	Shielding Angle:



C Range: 0 - 360DEG  
C Interval: 30.0DEG  
Test Speed: HIGH  
Temperature: 25.3°C  
Operators:  
Test Date: 2025-03-18

γ Range: 0 - 180DEG  
γ Interval: 1.0DEG  
Test System: EVERFINE GO-2000B\_V1 SYSTEM V2.00.488  
Humidity: 65.0%  
Test Distance: 6.360m [K=1.0000]  
Remarks:

## LED Avg.L Report

Test:U:24.00V I:0.4759A P:11.42W PF:1.000 Freq:0Hz Lamp Flux:53.2317x1 lm		
NAME: SF15-24V-5050-70-SPI-RGBW(3000K)-R	TYPE:	WEIGHT:
SPEC.:	DIM.: Length=1m	SERIAL No.:
MFR.: OLympia lighting	SUR.:	Shielding Angle:

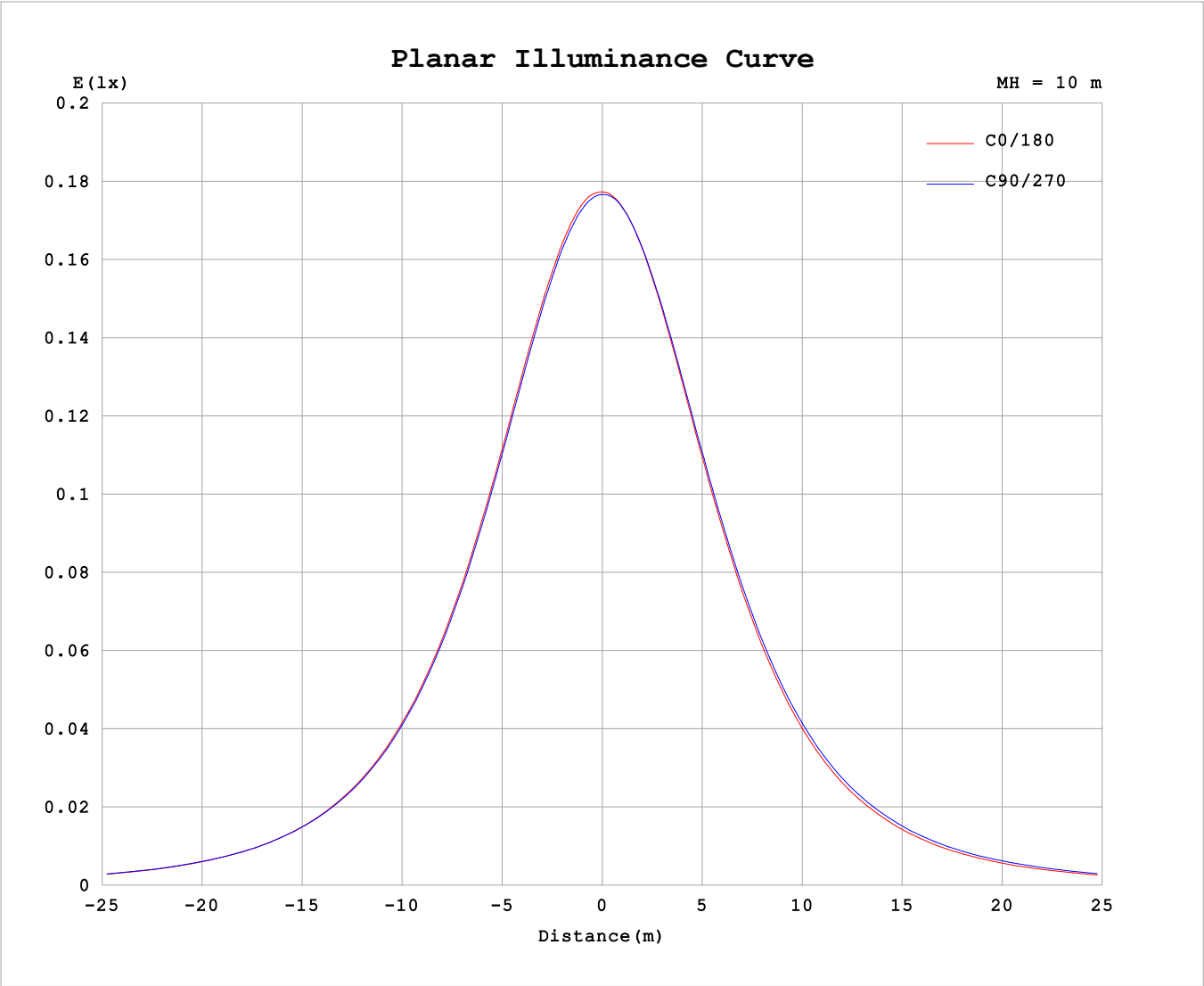
AvgL	cd/m2
L_0~180 (65) av	1262
L_0~180 (75) av	1141
L_0~180 (85) av	974
L_90~270 (65) av	1341
L_90~270 (75) av	1313
L_90~270 (85) av	1462
L_45 (65) av	1301
L_45 (75) av	1214
L_45 (85) av	1141

Standard: GB/T 29293-2012

C Range: 0 - 360DEG  
C Interval: 30.0DEG  
Test Speed: HIGH  
Temperature:25.3℃  
Operators:  
Test Date:2025-03-18

γ Range: 0 - 180DEG  
γ Interval: 1.0DEG  
Test System:EVERFINE GO-2000B\_V1 SYSTEM V2.00.488  
Humidity:65.0%  
Test Distance:6.360m [K=1.0000]  
Remarks:

Planar Illuminance Curve



C Range: 0 - 360DEG	γ Range: 0 - 180DEG
C Interval: 30.0DEG	γ Interval: 1.0DEG
Test Speed: HIGH	Test System:EVERFINE GO-2000B_V1 SYSTEM V2.00.488
Temperature:25.3℃	Humidity:65.0%
Operators:	Test Distance:6.360m [K=1.0000]
Test Date:2025-03-18	Remarks:

## LUMINOUS DISTRIBUTION INTENSITY DATA

Test:U:24.00V I:0.4759A P:11.42W PF:1.000 Freq:0Hz Lamp Flux:53.2317x1 lm																	
NAME: SF15-24V-5050-70-SPI-RGBW(3000K)-R									TYPE:			WEIGHT:					
SPEC.:									DIM.: Length=1m			SERIAL No.:					
MFR.: OLYMPIA lighting									SUR.:			Shielding Angle:					

Table--1

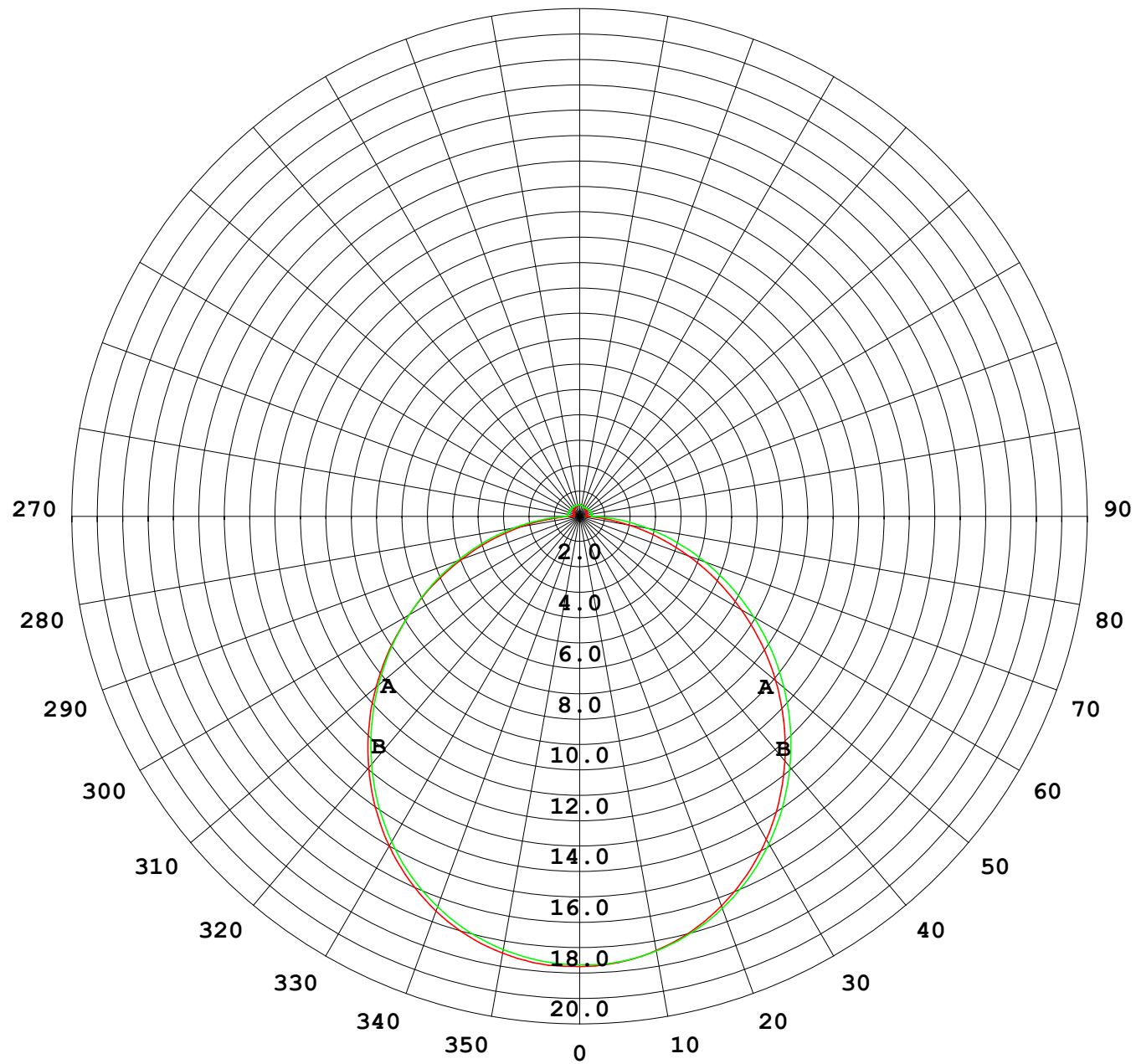
UNIT: cd

C (DEG) γ (DEG)	0	30	60	90	120	150	180	210	240	270	300	330						
0	17.7	17.7	17.7	17.7	17.7	17.7	17.7	17.7	17.7	17.7	17.7	17.7						
5	17.6	17.6	17.6	17.6	17.6	17.6	17.6	17.6	17.6	17.6	17.6	17.6						
10	17.4	17.4	17.4	17.3	17.4	17.3	17.3	17.4	17.4	17.4	17.4	17.4						
15	17.0	17.0	17.0	17.0	16.9	16.9	16.9	16.9	17.0	17.0	17.0	17.1						
20	16.5	16.5	16.4	16.4	16.4	16.3	16.3	16.4	16.4	16.5	16.5	16.5						
25	15.8	15.8	15.7	15.7	15.7	15.6	15.5	15.6	15.7	15.8	15.8	15.8						
30	15.0	14.9	14.9	14.8	14.8	14.7	14.7	14.8	14.9	14.9	15.0	15.0						
35	14.0	14.0	13.9	13.9	13.8	13.7	13.7	13.8	13.9	14.0	14.0	14.0						
40	12.9	12.9	12.8	12.8	12.7	12.6	12.5	12.7	12.8	12.9	13.0	12.9						
45	11.7	11.7	11.7	11.6	11.5	11.4	11.3	11.5	11.7	11.7	11.8	11.8						
50	10.4	10.4	10.4	10.4	10.3	10.1	10.1	10.2	10.4	10.5	10.6	10.5						
55	9.12	9.10	9.13	9.08	8.96	8.78	8.72	8.87	9.13	9.25	9.29	9.19						
60	7.74	7.72	7.78	7.76	7.61	7.41	7.33	7.50	7.78	7.93	7.95	7.82						
65	6.33	6.34	6.44	6.44	6.24	6.02	5.94	6.11	6.40	6.60	6.59	6.44						
70	4.93	4.96	5.09	5.13	4.89	4.64	4.54	4.72	5.03	5.26	5.22	5.06						
75	3.58	3.63	3.77	3.86	3.58	3.30	3.22	3.38	3.70	3.96	3.88	3.71						
80	2.29	2.35	2.50	2.62	2.31	2.03	1.95	2.09	2.42	2.71	2.58	2.43						
85	1.11	1.17	1.30	1.40	1.12	0.90	0.84	0.94	1.20	1.53	1.36	1.23						
90	0.33	0.36	0.45	0.50	0.47	0.35	0.28	0.32	0.38	0.50	0.37	0.38						
95	0.25	0.30	0.41	0.49	0.44	0.34	0.26	0.27	0.36	0.47	0.29	0.25						
100	0.25	0.31	0.40	0.48	0.44	0.34	0.27	0.27	0.37	0.47	0.30	0.25						
105	0.25	0.32	0.40	0.47	0.44	0.35	0.27	0.27	0.37	0.47	0.31	0.25						
110	0.26	0.33	0.40	0.47	0.44	0.36	0.28	0.27	0.37	0.47	0.32	0.25						
115	0.28	0.34	0.40	0.46	0.44	0.38	0.30	0.29	0.37	0.47	0.33	0.26						
120	0.30	0.35	0.40	0.46	0.44	0.38	0.31	0.29	0.37	0.47	0.34	0.28						
125	0.31	0.37	0.40	0.46	0.44	0.40	0.33	0.31	0.38	0.45	0.34	0.29						
130	0.33	0.38	0.41	0.46	0.44	0.40	0.34	0.32	0.38	0.43	0.35	0.30						
135	0.34	0.39	0.42	0.46	0.44	0.41	0.35	0.34	0.39	0.43	0.36	0.30						
140	0.35	0.40	0.42	0.46	0.44	0.42	0.37	0.35	0.39	0.42	0.37	0.32						
145	0.37	0.41	0.42	0.46	0.44	0.42	0.39	0.37	0.40	0.41	0.38	0.34						
150	0.38	0.42	0.43	0.46	0.44	0.43	0.40	0.38	0.41	0.41	0.39	0.35						
155	0.39	0.43	0.44	0.46	0.44	0.44	0.41	0.40	0.42	0.41	0.41	0.37						
160	0.41	0.44	0.45	0.46	0.44	0.45	0.43	0.41	0.44	0.41	0.42	0.39						
165	0.43	0.44	0.45	0.46	0.44	0.45	0.44	0.42	0.45	0.42	0.44	0.40						
170	0.44	0.45	0.45	0.46	0.44	0.45	0.45	0.44	0.45	0.44	0.46	0.43						
175	0.44	0.45	0.45	0.46	0.45	0.45	0.45	0.44	0.45	0.45	0.46	0.44						
180	0.45	0.45	0.46	0.46	0.45	0.45	0.45	0.45	0.45	0.46	0.46	0.45						

C Range: 0 - 360DEG  
C Interval: 30.0DEG  
Test Speed: HIGH  
Temperature:25.3℃  
Operators:  
Test Date:2025-03-18

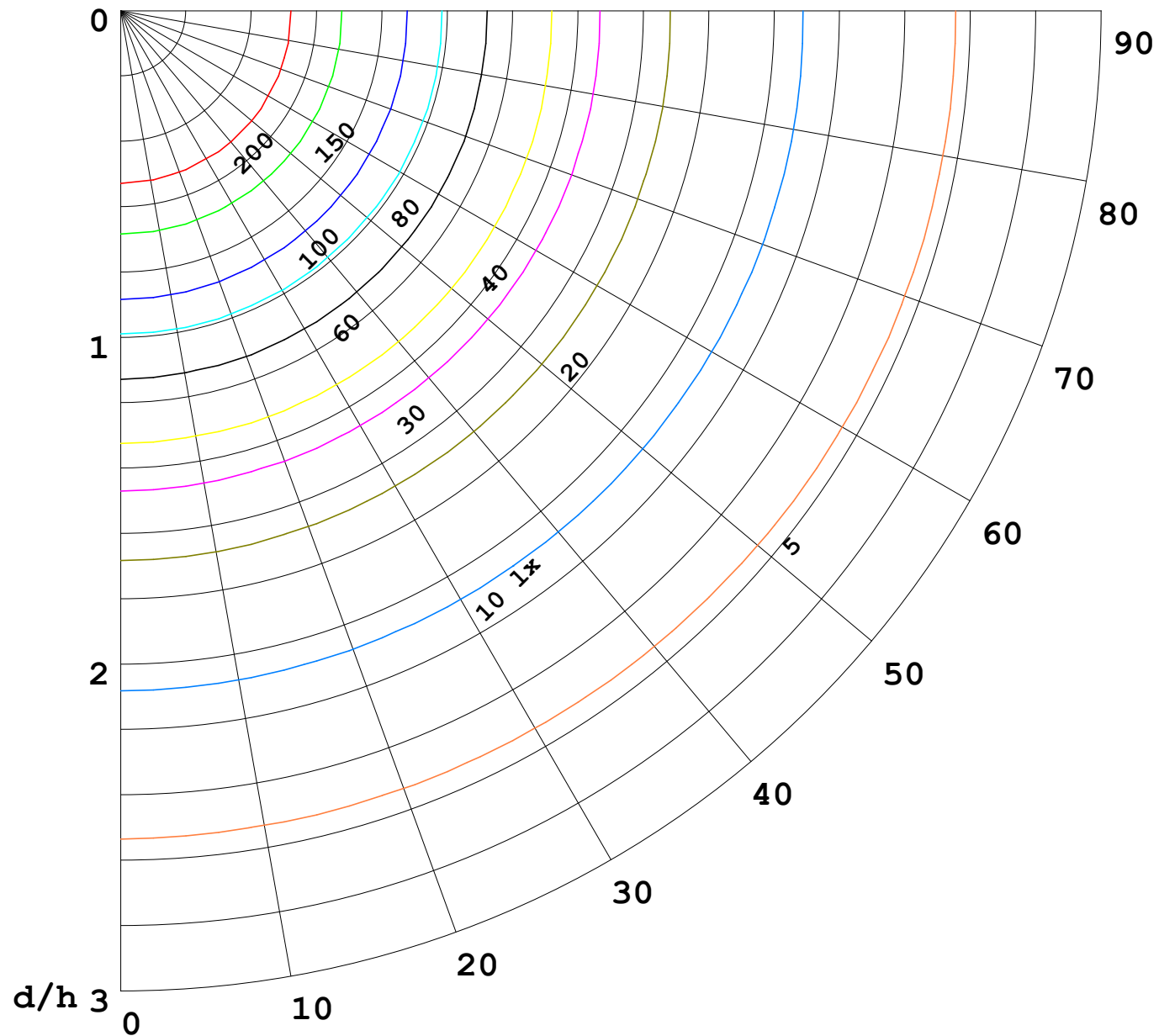
γ Range: 0 - 180DEG  
γ Interval: 1.0DEG  
Test System:EVERFINE GO-2000B\_V1 SYSTEM V2.00.488  
Humidity:65.0%  
Test Distance:6.360m [K=1.0000]  
Remarks:

I (cd)



1000 lm

$\kappa = 1$



F = 1000 lm  
 K = 0.7  
 Hcc = 0.8 m  
 Hfc = 0.0 m  
 Eave = 100 lx

	Pcc	Pw	Pfc
————	70	50	30
————	50	30	20

