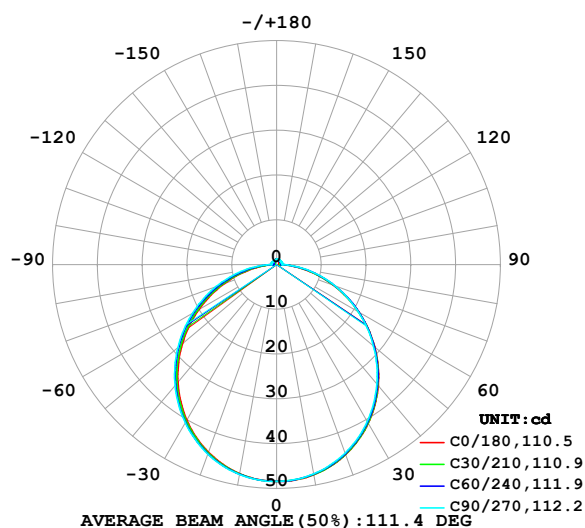


## LUMINAIRE PHOTOMETRIC TEST REPORT

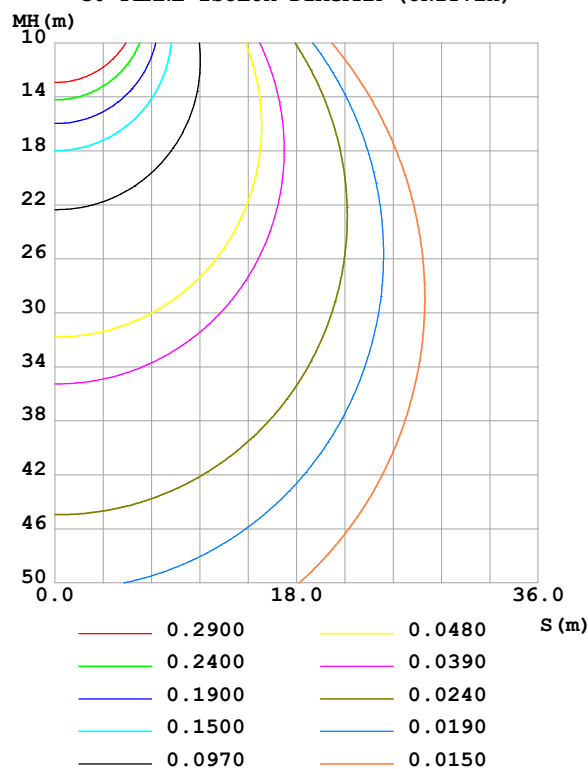
Test:U:24.00V I:0.4767A P:11.44W PF:1.000 Freq:0Hz Lamp Flux:145.049x1 lm		
NAME: SF15-24V-5050-70-SPI-RGBW(3000K)-G	TYPE:	WEIGHT:
SPEC.:	DIM.: Length=1m	SERIAL No.:
MFR.: OLympia lighting	SUR.:	Shielding Angle:

DATA OF LAMP		PHOTOMETRIC DATA Eff: 12.68 lm/W			
MODEL	5050	Imax(cd)	48.42	S/MH(C0/180)	1.24
NOMINAL POWER(W)		LOR(%)	100.0	S/MH(C90/270)	1.25
RATED VOLTAGE(V)	24	TOTAL FLUX(lm)	145.05	$\eta$ UP,DN(C0-180)	2.2,47.8
NOMINAL FLUX(lm)	145.049	CIE CLASS	DIRECT	$\eta$ UP,DN(C180-360)	2.0,48.0
LAMPS INSIDE	1	$\eta$ up(%)	4.2	CIBSE SHR NOM	1.25
TEST VOLTAGE(V)		$\eta$ down(%)	95.8	CIBSE SHR MAX	1.35

LUMINOUS INTENSITY DISTRIBUTION DIAGRAM



C0 PLANE ISOLUX DIAGRAM (UNIT:lx)



C Range: 0 - 360DEG  
C Interval: 30.0DEG  
Test Speed: HIGH  
Temperature:25.3℃  
Operators:  
Test Date:2025-03-18

$\gamma$  Range: 0 - 180DEG  
 $\gamma$  Interval: 1.0DEG  
Test System:EVERFINE GO-2000B\_V1 SYSTEM V2.00.488  
Humidity:65.0%  
Test Distance:6.360m [K=1.0000]  
Remarks:

## ZONAL FLUX DIAGRAM

## ZONAL FLUX DIAGRAM:

$\gamma$	C0	C45	C90	C135	C180	C225	C270	C315	$\gamma$	$\Phi$ zone	$\Phi$ total	%lum, lamp
10	47.68	47.60	47.47	47.42	47.42	47.51	47.60	47.70	0- 10	4.581	4.581	3.16,3.16
20	45.14	45.01	44.79	44.66	44.57	44.82	45.01	45.20	10- 20	13.10	17.69	12.2,12.2
30	40.94	40.78	40.50	40.28	40.12	40.52	40.81	41.04	20- 30	19.79	37.48	25.8,25.8
40	35.34	35.16	34.84	34.55	34.29	34.86	35.30	35.49	30- 40	23.74	61.22	42.2,42.2
50	28.63	28.50	28.24	27.82	27.46	28.16	28.80	28.89	40- 50	24.50	85.72	59.1,59.1
60	21.21	21.18	21.10	20.47	20.01	20.83	21.67	21.59	50- 60	22.09	107.8	74.3,74.3
70	13.53	13.69	13.84	12.95	12.38	13.28	14.38	14.06	60- 70	17.08	124.9	86.1,86.1
80	6.273	6.594	6.969	5.871	5.284	6.124	7.416	6.861	70- 80	10.44	135.3	93.3,93.3
90	0.8616	1.060	1.222	1.062	0.7602	0.9149	1.306	0.9893	80- 90	3.639	139.0	95.8,95.8
100	0.6484	0.8974	1.213	0.9978	0.6830	0.8080	1.250	0.6989	90-100	0.9763	139.9	96.5,96.5
110	0.7090	0.9321	1.196	1.025	0.7349	0.8411	1.262	0.7393	100-110	0.9485	140.9	97.1,97.1
120	0.8039	0.9797	1.175	1.056	0.8040	0.8801	1.210	0.8014	110-120	0.9267	141.8	97.8,97.8
130	0.8788	1.019	1.164	1.079	0.8790	0.9205	1.132	0.8563	120-130	0.8673	142.7	98.4,98.4
140	0.9452	1.050	1.167	1.105	0.9482	0.9724	1.071	0.8938	130-140	0.7721	143.5	98.9,98.9
150	1.014	1.095	1.187	1.131	1.026	1.030	1.054	0.9603	140-150	0.6502	144.1	99.4,99.4
160	1.089	1.134	1.187	1.154	1.101	1.108	1.086	1.056	150-160	0.5023	144.6	99.7,99.7
170	1.150	1.173	1.187	1.178	1.159	1.174	1.161	1.147	160-170	0.3229	144.9	99.9,99.9
180	1.173	1.192	1.207	1.196	1.176	1.193	1.204	1.196	170-180	0.1126	145.0	100,100
DEG	LUMINOUS INTENSITY:cd									UNIT:lm		

Conical surface Flux(90deg): 73.579 lm

%lum = 50.7%

%lamp = 50.7%

Conical surface Flux(130deg): 117.11 lm

%lum = 80.7%

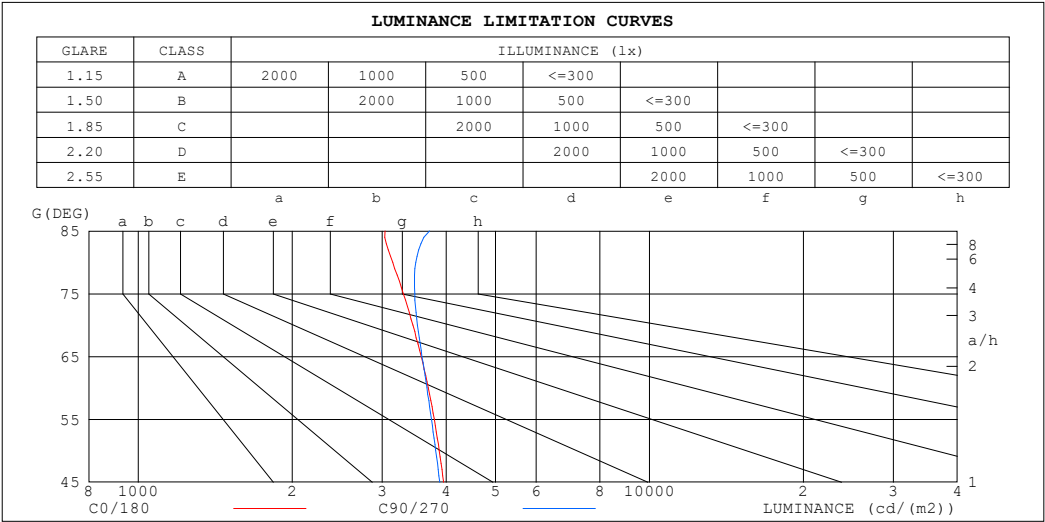
%lamp = 80.7%

C Range: 0 - 360DEG  
 C Interval: 30.0DEG  
 Test Speed: HIGH  
 Temperature:25.3℃  
 Operators:  
 Test Date:2025-03-18

$\gamma$  Range: 0 - 180DEG  
 $\gamma$  Interval: 1.0DEG  
 Test System:EVERFINE GO-2000B\_V1 SYSTEM V2.00.488  
 Humidity:65.0%  
 Test Distance:6.360m [K=1.0000]  
 Remarks:

LUMINANCE LIMITATION CURVES

Test:U:24.00V I:0.4767A P:11.44W PF:1.000 Freq:0Hz Lamp Flux:145.049x1 lm		
NAME: SF15-24V-5050-70-SPI-RGBW(3000K)-G	TYPE:	WEIGHT:
SPEC.:	DIM.: Length=1m	SERIAL No.:
MFR.: OLympia lighting	SUR.:	Shielding Angle:



LUMINANCE cd/(m2)		
G (DEG)	C0/180	C90/270
85	3037	3714
80	3146	3488
75	3301	3473
70	3444	3517
65	3577	3589
60	3694	3668
55	3791	3744
50	3878	3818
45	3953	3888

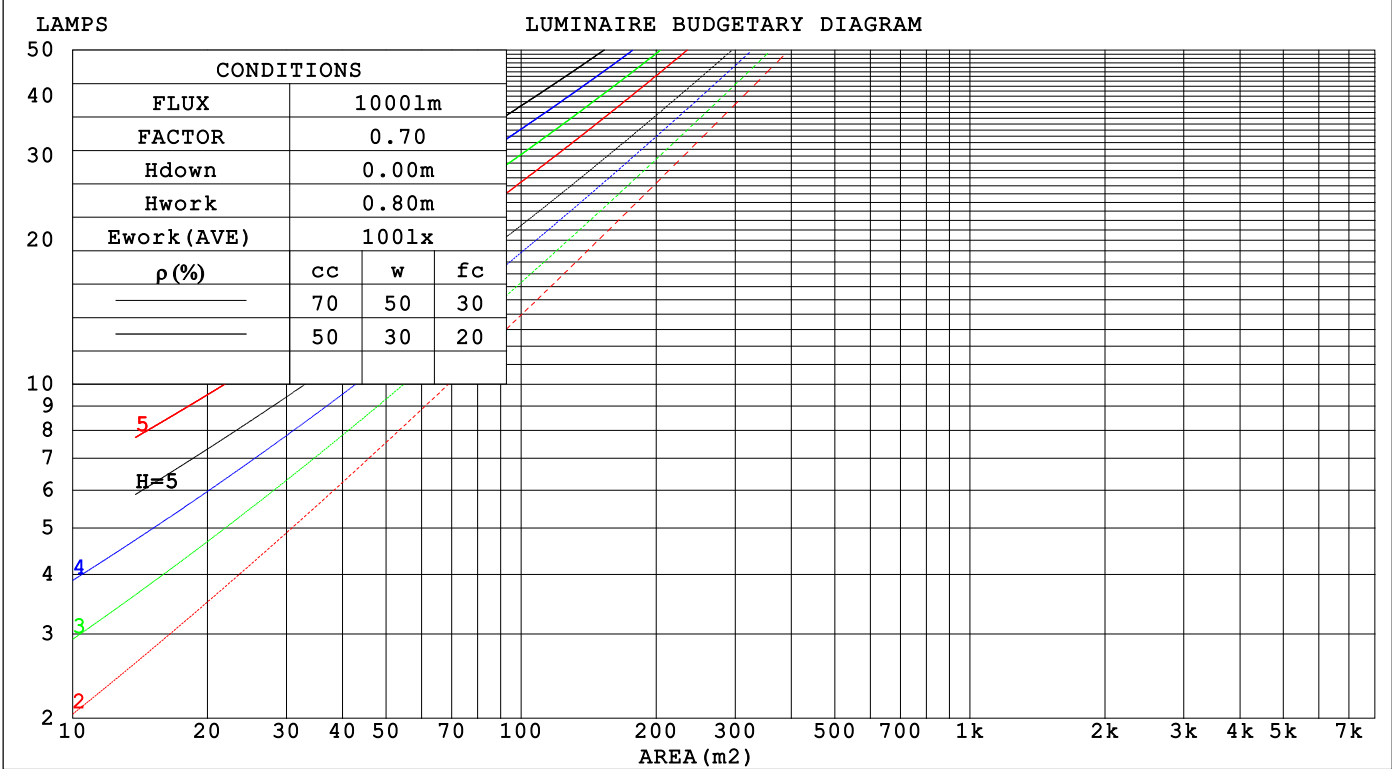
C Range: 0 - 360DEG  
C Interval: 30.0DEG  
Test Speed: HIGH  
Temperature:25.3℃  
Operators:  
Test Date:2025-03-18

γ Range: 0 - 180DEG  
γ Interval: 1.0DEG  
Test System:EVERFINE GO-2000B\_V1 SYSTEM V2.00.488  
Humidity:65.0%  
Test Distance:6.360m [K=1.0000]  
Remarks:

CU AND LUMINAIRE BUDGETARY ESTIMATE DIAGRAM

Test:U:24.00V I:0.4767A P:11.44W PF:1.000 Freq:0Hz		
Lamp Flux:145.049x1 lm		
NAME: SF15-24V-5050-70-SPI-RGBW(3000K)-G	TYPE:	WEIGHT:
SPEC.:	DIM.: Length=1m	SERIAL No.:
MFR.: OLYMPIA lighting	SUR.:	Shielding Angle:

pcc	80%			70%			50%			30%			10%			0
pw	50%	30%	10%	50%	30%	10%	50%	30%	10%	50%	30%	10%	50%	30%	10%	0
pfc	20%			20%			20%			20%			20%			0
RCR	RCR:Room Cavity Ratio			Coefficients of Utilization(CU)												
0.0	1.18	1.18	1.18	1.15	1.15	1.15	1.09	1.09	1.09	1.03	1.03	1.03	.98	.98	.98	.96
1.0	1.02	.98	.94	.90	.96	.92	.95	.91	.88	.90	.87	.85	.86	.84	.82	.79
2.0	.89	.82	.76	.87	.80	.75	.83	.77	.73	.79	.74	.70	.75	.71	.68	.66
3.0	.78	.70	.63	.76	.69	.62	.73	.66	.61	.69	.64	.59	.66	.62	.58	.55
4.0	.69	.60	.54	.68	.59	.53	.64	.57	.52	.62	.56	.51	.59	.54	.49	.47
5.0	.62	.53	.46	.60	.52	.46	.58	.50	.45	.55	.49	.44	.53	.47	.43	.41
6.0	.56	.47	.40	.54	.46	.40	.52	.45	.39	.50	.43	.38	.48	.42	.38	.36
7.0	.50	.42	.35	.49	.41	.35	.47	.40	.35	.46	.39	.34	.44	.38	.33	.31
8.0	.46	.37	.32	.45	.37	.31	.43	.36	.31	.42	.35	.30	.40	.34	.30	.28
9.0	.42	.34	.28	.41	.33	.28	.40	.33	.28	.39	.32	.27	.37	.31	.27	.25
10.0	.39	.31	.26	.38	.31	.25	.37	.30	.25	.36	.29	.25	.35	.29	.25	.23



C Range: 0 - 360DEG  
C Interval: 30.0DEG  
Test Speed: HIGH  
Temperature:25.3℃  
Operators:  
Test Date:2025-03-18

γ Range: 0 - 180DEG  
γ Interval: 1.0DEG  
Test System:EVERFINE GO-2000B\_V1 SYSTEM V2.00.488  
Humidity:65.0%  
Test Distance:6.360m [K=1.0000]  
Remarks:

## WEC AND CCEC

Test:U:24.00V I:0.4767A P:11.44W PF:1.000 Freq:0Hz Lamp Flux:145.049x1 lm		
NAME: SF15-24V-5050-70-SPI-RGBW(3000K)-G	TYPE:	WEIGHT:
SPEC.:	DIM.: Length=1m	SERIAL No.:
MFR.: OLympia lighting	SUR.:	Shielding Angle:

pcc	80%			70%			50%			30%			10%			0														
pw	50%	30%	10%	50%	30%	10%	50%	30%	10%	50%	30%	10%	50%	30%	10%	0														
pfc	20%			20%			20%			20%			20%			0														
RCR	RCR:Room Cavity Ratio															Wall Exitance Coefficients(WEC)														
0.0																														
1.0	.317	.180	.057	.309	.176	.056	.293	.168	.054	.279	.161	.052	.265	.154	.050															
2.0	.295	.162	.050	.287	.158	.049	.273	.152	.047	.261	.146	.046	.249	.141	.044															
3.0	.271	.144	.043	.265	.142	.043	.252	.137	.042	.241	.132	.040	.230	.127	.039															
4.0	.250	.130	.038	.244	.128	.038	.233	.123	.037	.222	.119	.036	.213	.116	.035															
5.0	.230	.117	.034	.225	.116	.034	.215	.112	.033	.206	.109	.032	.197	.105	.032															
6.0	.213	.107	.031	.209	.105	.030	.200	.102	.030	.191	.099	.029	.184	.097	.029															
7.0	.198	.098	.028	.194	.097	.028	.186	.094	.027	.179	.092	.027	.171	.089	.026															
8.0	.185	.090	.025	.181	.089	.025	.174	.087	.025	.167	.085	.024	.161	.083	.024															
9.0	.173	.084	.023	.170	.083	.023	.163	.081	.023	.157	.079	.023	.151	.077	.022															
10.0	.163	.078	.022	.160	.077	.022	.154	.075	.021	.148	.074	.021	.143	.072	.021															

pcc	80%			70%			50%			30%			10%			0
pw	50%	30%	10%	50%	30%	10%	50%	30%	10%	50%	30%	10%	50%	30%	10%	0
pfc	20%			20%			20%			20%			20%			0
RCR	RCR:Room Cavity Ratio						Ceiling Cavity Exitance Coefficients (CCEC)									
0.0	.222	.222	.222	.190	.190	.190	.130	.130	.130	.075	.075	.075	.024	.024	.024	
1.0	.213	.188	.166	.182	.162	.143	.125	.111	.099	.072	.064	.057	.023	.021	.019	
2.0	.205	.164	.130	.176	.141	.112	.120	.098	.078	.069	.057	.046	.022	.018	.015	
3.0	.197	.147	.107	.169	.127	.093	.116	.088	.065	.067	.051	.038	.022	.017	.013	
4.0	.190	.134	.091	.163	.116	.079	.112	.081	.056	.065	.047	.033	.021	.015	.011	
5.0	.182	.123	.080	.157	.107	.070	.108	.075	.049	.062	.044	.029	.020	.014	.010	
6.0	.175	.115	.072	.150	.100	.063	.104	.070	.044	.060	.041	.026	.019	.013	.009	
7.0	.168	.108	.066	.145	.094	.058	.100	.066	.041	.058	.039	.024	.019	.013	.008	
8.0	.162	.103	.062	.139	.089	.054	.096	.062	.038	.056	.037	.023	.018	.012	.008	
9.0	.156	.098	.058	.134	.085	.051	.093	.060	.036	.054	.035	.022	.018	.012	.007	
10.0	.150	.093	.056	.129	.081	.049	.090	.057	.035	.052	.034	.021	.017	.011	.007	

C Range: 0 - 360DEG  
C Interval: 30.0DEG  
Test Speed: HIGH  
Temperature:25.3℃  
Operators:  
Test Date:2025-03-18

γ Range: 0 - 180DEG  
γ Interval: 1.0DEG  
Test System:EVERFINE GO-2000B\_V1 SYSTEM V2.00.488  
Humidity:65.0%  
Test Distance:6.360m [K=1.0000]  
Remarks:

UGR(Unified Glare Rating) Table

Test:U:24.00V I:0.4767A P:11.44W PF:1.000 Freq:0Hz Lamp Flux:145.049x1 lm											
NAME: SF15-24V-5050-70-SPI-RGBW(3000K)-G						TYPE:		WEIGHT:			
SPEC.:						DIM.: Length=1m		SERIAL No.:			
MFR.: OLympia lighting						SUR.:		Shielding Angle:			
ceiling/cavity	0.7	0.7	0.5	0.5	0.3	0.7	0.7	0.5	0.5	0.3	
walls	0.5	0.3	0.5	0.3	0.3	0.5	0.3	0.5	0.3	0.3	
working plane	0.2	0.2	0.2	0.2	0.2	0.2	0.2	0.2	0.2	0.2	
Room dimensions		Viewed crosswise					Viewed endwise				
x = 2H y = 2H	22.8	24.3	23.1	24.6	24.8	22.8	24.3	23.1	24.5	24.8	
	3H	24.4	25.7	24.7	26.0	26.4	24.4	25.8	24.8	26.1	26.4
	4H	25.0	26.3	25.4	26.6	27.0	25.1	26.4	25.5	26.7	27.1
	6H	25.5	26.8	25.9	27.1	27.5	25.7	26.9	26.1	27.3	27.6
	8H	25.7	26.9	26.1	27.3	27.6	25.9	27.1	26.3	27.5	27.8
	12H	25.8	27.0	26.3	27.3	27.7	26.1	27.2	26.5	27.6	28.0
4H	2H	23.4	24.7	23.8	25.0	25.4	23.4	24.7	23.8	25.0	25.4
	3H	25.2	26.3	25.6	26.7	27.1	25.2	26.3	25.6	26.7	27.1
	4H	26.0	27.0	26.4	27.4	27.8	26.1	27.1	26.5	27.5	27.9
	6H	26.6	27.5	27.1	27.9	28.4	26.8	27.7	27.3	28.1	28.6
	8H	26.9	27.7	27.3	28.1	28.6	27.1	27.9	27.6	28.4	28.9
	12H	27.0	27.8	27.5	28.3	28.8	27.3	28.1	27.8	28.6	29.1
8H	4H	26.3	27.1	26.7	27.6	28.0	26.3	27.2	26.8	27.6	28.1
	6H	27.1	27.8	27.6	28.3	28.8	27.3	28.0	27.8	28.4	29.0
	8H	27.4	28.1	28.0	28.6	29.1	27.7	28.3	28.2	28.8	29.3
	12H	27.7	28.3	28.3	28.8	29.3	28.0	28.6	28.6	29.1	29.7
12H	4H	26.3	27.1	26.8	27.5	28.0	26.4	27.1	26.9	27.6	28.1
	6H	27.2	27.8	27.7	28.3	28.8	27.3	28.0	27.9	28.5	29.0
	8H	27.6	28.1	28.1	28.6	29.2	27.8	28.3	28.3	28.9	29.4
Variations with the observer position at spacings(CIE Pub.117):											
S = 1.0H	+ 0.1 / - 0.2					+ 0.1 / - 0.2					
1.5H	+ 0.2 / - 0.3					+ 0.2 / - 0.3					
2.0H	+ 0.1 / - 0.3					+ 0.1 / - 0.3					

CIE Pub.117, 145.0 lm Total Lamp Luminous Flux Correct (8log(F/F0) = -6.7)  
Area: 0.0115 m2

C Range: 0 - 360DEG  
C Interval: 30.0DEG  
Test Speed: HIGH  
Temperature:25.3℃  
Operators:  
Test Date:2025-03-18

γ Range: 0 - 180DEG  
γ Interval: 1.0DEG  
Test System:EVERFINE GO-2000B\_V1 SYSTEM V2.00.488  
Humidity:65.0%  
Test Distance:6.360m [K=1.0000]  
Remarks:

## UTILIZATION FACTORS TABLE

Test:U:24.00V I:0.4767A P:11.44W PF:1.000 Freq:0Hz Lamp Flux:145.049x1 lm		
NAME: SF15-24V-5050-70-SPI-RGBW(3000K)-G	TYPE:	WEIGHT:
SPEC.:	DIM.: Length=1m	SERIAL No.:
MFR.: OLympia lighting	SUR.:	Shielding Angle:

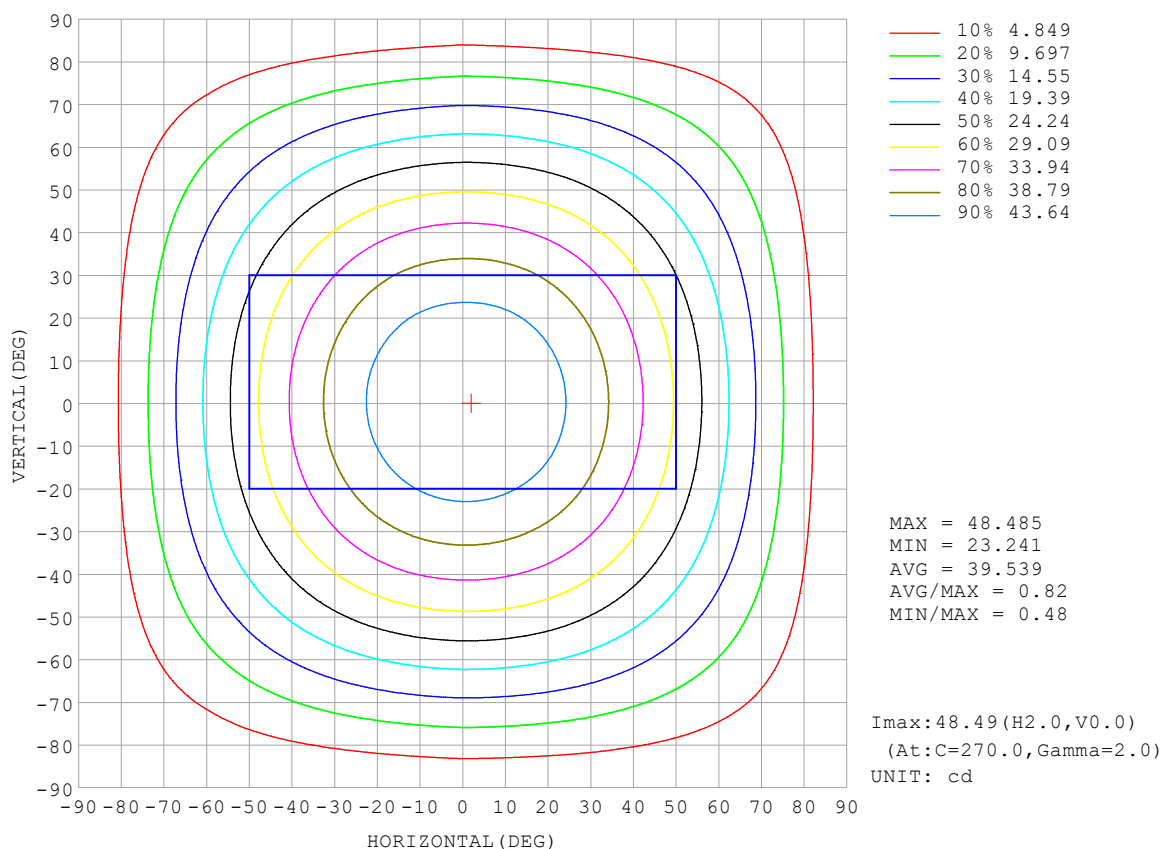
REFLECTANCE										
Ceiling	0.8	0.8	0.8	0.7	0.7	0.7	0.5	0.5	0.5	0
Walls	0.7	0.5	0.3	0.7	0.5	0.3	0.7	0.5	0.3	0
Working plane	0.2	0.2	0.2	0.2	0.2	0.2	0.2	0.2	0.2	0
ROOM INDEX	UTILIZATION FACTORS (PERCENT) $k(RI) \times RCR = 5$									
$k = 0.60$	56	44	37	55	44	37	54	43	37	31
0.80	66	54	47	65	54	47	63	53	46	39
1.00	74	63	55	73	62	55	70	63	54	47
1.25	81	71	63	80	70	63	76	68	62	54
1.50	86	76	69	84	75	68	81	73	67	59
2.00	93	84	78	91	83	77	87	80	75	66
2.50	97	89	83	95	87	82	90	84	79	70
3.00	101	93	88	98	92	86	93	88	84	74
4.00	105	99	94	102	97	92	97	93	89	79
5.00	107	102	98	104	100	96	99	95	92	82
ROOM INDEX	UF (total)									Direct
According to DIN EN 13032-2 2004			Suspended					SHRNOM = 1.25		

C Range: 0 - 360DEG  
 C Interval: 30.0DEG  
 Test Speed: HIGH  
 Temperature: 25.3 °C  
 Operators:  
 Test Date: 2025-03-18

γ Range: 0 - 180DEG  
 γ Interval: 1.0DEG  
 Test System: EVERFINE GO-2000B\_V1 SYSTEM V2.00.488  
 Humidity: 65.0%  
 Test Distance: 6.360m [K=1.0000]  
 Remarks:

## ISOCANDELA DIAGRAM

Test:U:24.00V I:0.4767A P:11.44W PF:1.000 Freq:0Hz Lamp Flux:145.049x1 lm		
NAME: SF15-24V-5050-70-SPI-RGBW(3000K)-G	TYPE:	WEIGHT:
SPEC.:	DIM.: Length=1m	SERIAL No.:
MFR.: OLympia lighting	SUR.:	Shielding Angle:



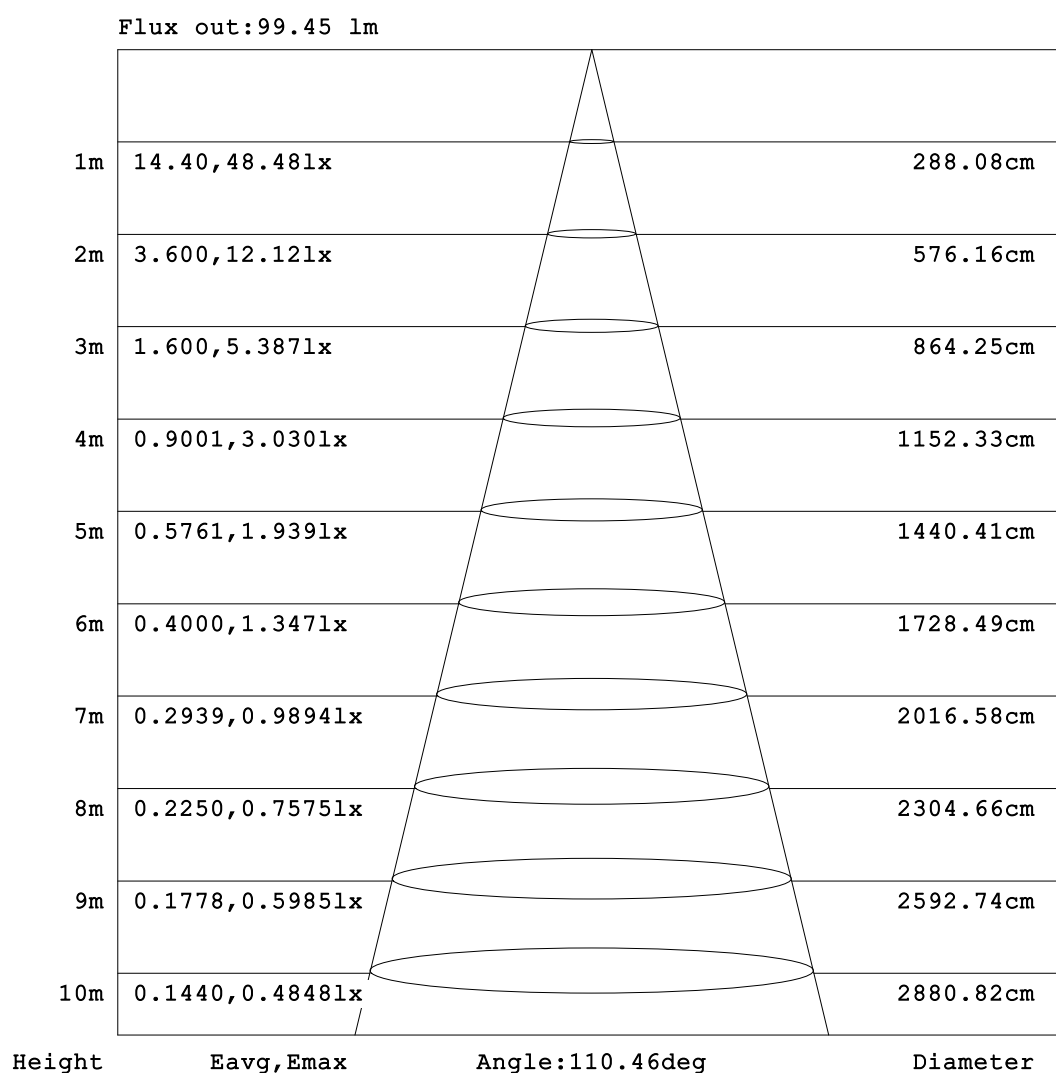
C Range: 0 - 360DEG  
C Interval: 30.0DEG  
Test Speed: HIGH  
Temperature:25.3℃  
Operators:  
Test Date:2025-03-18

γ Range: 0 - 180DEG  
γ Interval: 1.0DEG  
Test System:EVERFINE GO-2000B\_V1 SYSTEM V2.00.488  
Humidity:65.0%  
Test Distance:6.360m [K=1.0000]  
Remarks:



## AAI Figure

Test:U:24.00V I:0.4767A P:11.44W PF:1.000 Freq:0Hz Lamp Flux:145.049x1 lm		
NAME: SF15-24V-5050-70-SPI-RGBW(3000K)-G	TYPE:	WEIGHT:
SPEC.:	DIM.: Length=1m	SERIAL No.:
MFR.: OLympia lighting	SUR.:	Shielding Angle:



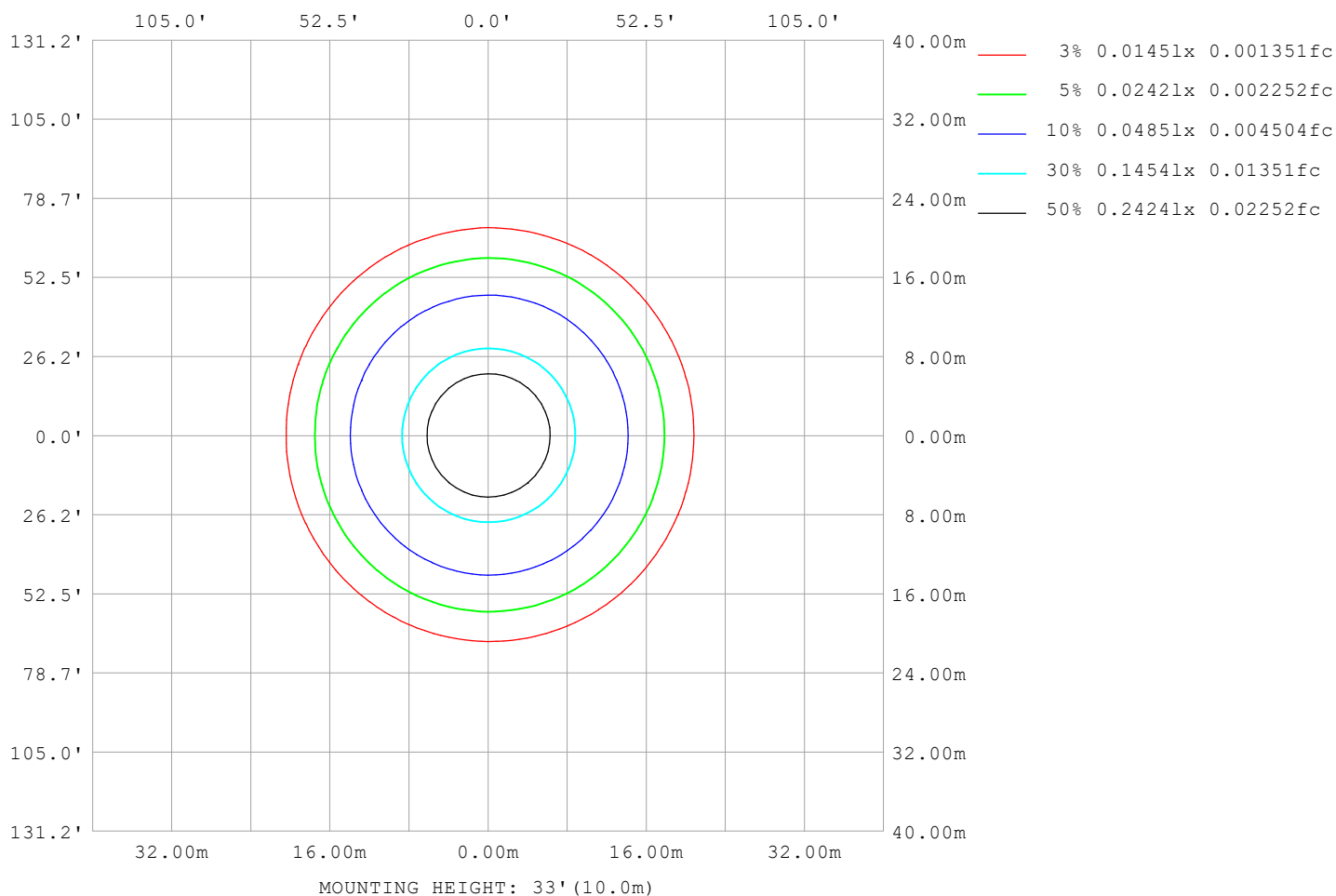
Note:The Curves indicate the illuminated area and the average illumination when the luminaire is at different distance.

C Range: 0 - 360DEG  
C Interval: 30.0DEG  
Test Speed: HIGH  
Temperature:25.3℃  
Operators:  
Test Date:2025-03-18

γ Range: 0 - 180DEG  
γ Interval: 1.0DEG  
Test System:EVERFINE GO-2000B\_V1 SYSTEM V2.00.488  
Humidity:65.0%  
Test Distance:6.360m [K=1.0000]  
Remarks:

## ISOLUX DIAGRAM

Test:U:24.00V I:0.4767A P:11.44W PF:1.000 Freq:0Hz Lamp Flux:145.049x1 lm		
NAME: SF15-24V-5050-70-SPI-RGBW(3000K)-G	TYPE:	WEIGHT:
SPEC.:	DIM.: Length=1m	SERIAL No.:
MFR.: OLympia lighting	SUR.:	Shielding Angle:



C Range: 0 - 360DEG  
C Interval: 30.0DEG  
Test Speed: HIGH  
Temperature: 25.3°C  
Operators:  
Test Date: 2025-03-18

γ Range: 0 - 180DEG  
γ Interval: 1.0DEG  
Test System: EVERFINE GO-2000B\_V1 SYSTEM V2.00.488  
Humidity: 65.0%  
Test Distance: 6.360m [K=1.0000]  
Remarks:

## LED Avg.L Report

Test:U:24.00V I:0.4767A P:11.44W PF:1.000 Freq:0Hz Lamp Flux:145.049x1 lm		
NAME: SF15-24V-5050-70-SPI-RGBW(3000K)-G	TYPE:	WEIGHT:
SPEC.:	DIM.: Length=1m	SERIAL No.:
MFR.: OLympia lighting	SUR.:	Shielding Angle:

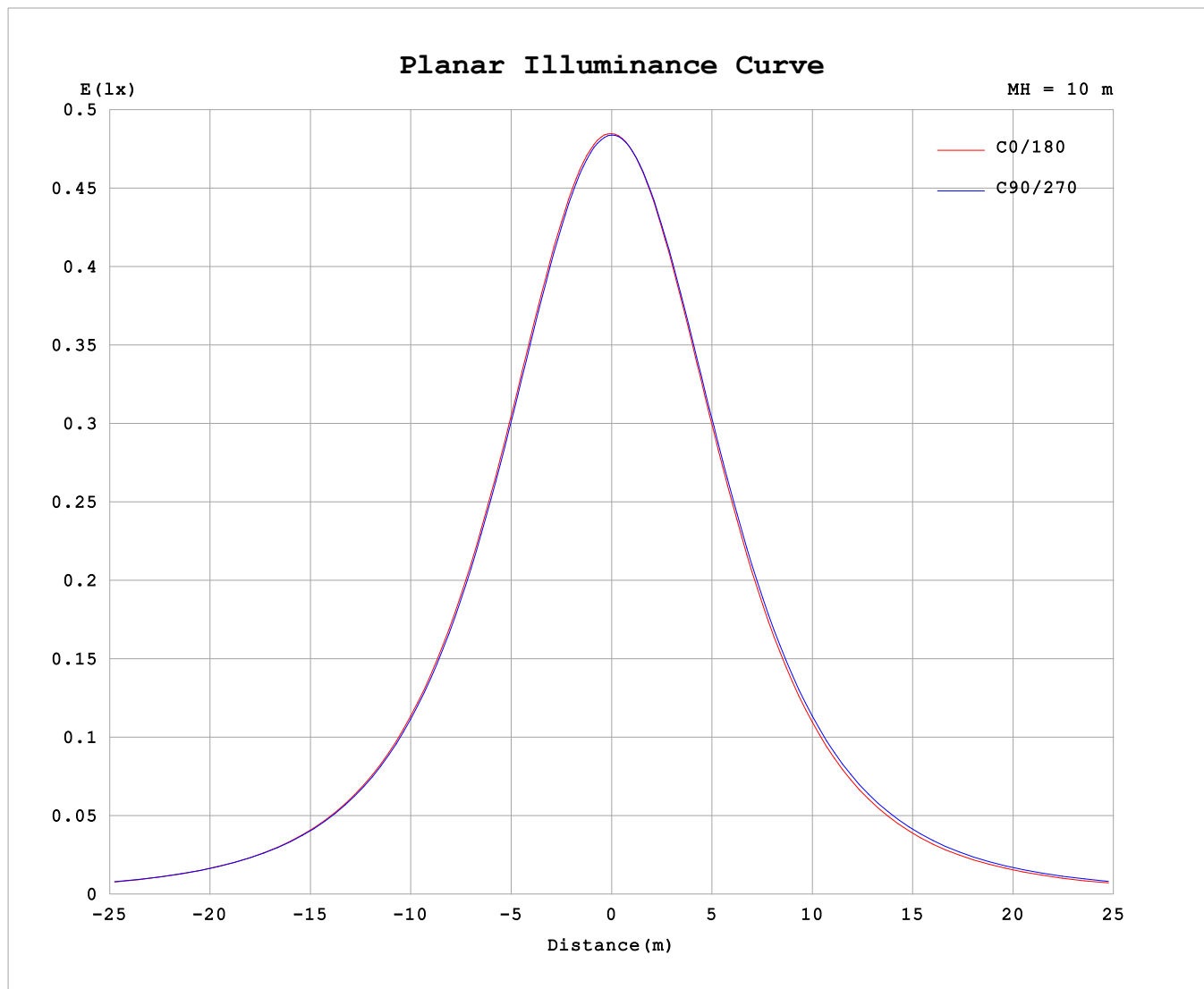
AvgL	cd/m2
L_0~180 (65) av	3451
L_0~180 (75) av	3114
L_0~180 (85) av	2663
L_90~270 (65) av	3649
L_90~270 (75) av	3556
L_90~270 (85) av	3936
L_45 (65) av	3549
L_45 (75) av	3306
L_45 (85) av	3099

Standard: GB/T 29293-2012

C Range: 0 - 360DEG  
C Interval: 30.0DEG  
Test Speed: HIGH  
Temperature:25.3℃  
Operators:  
Test Date:2025-03-18

γ Range: 0 - 180DEG  
γ Interval: 1.0DEG  
Test System:EVERFINE GO-2000B\_V1 SYSTEM V2.00.488  
Humidity:65.0%  
Test Distance:6.360m [K=1.0000]  
Remarks:

## Planar Illuminance Curve



C Range: 0 - 360DEG  
C Interval: 30.0DEG  
Test Speed: HIGH  
Temperature: 25.3 °C  
Operators:  
Test Date: 2025-03-18

$\gamma$  Range: 0 - 180DEG  
 $\gamma$  Interval: 1.0DEG  
Test System: EVERFINE GO-2000B\_V1 SYSTEM V2.00.488  
Humidity: 65.0%  
Test Distance: 6.360m [K=1.0000]  
Remarks:

## LUMINOUS DISTRIBUTION INTENSITY DATA

Test:U:24.00V I:0.4767A P:11.44W PF:1.000 Freq:0Hz Lamp Flux:145.049x1 lm																	
NAME: SF15-24V-5050-70-SPI-RGBW(3000K)-G									TYPE:						WEIGHT:		
SPEC.:									DIM.: Length=1m						SERIAL No.:		
MFR.: OLYMPIA lighting									SUR.:						Shielding Angle:		

Table--1

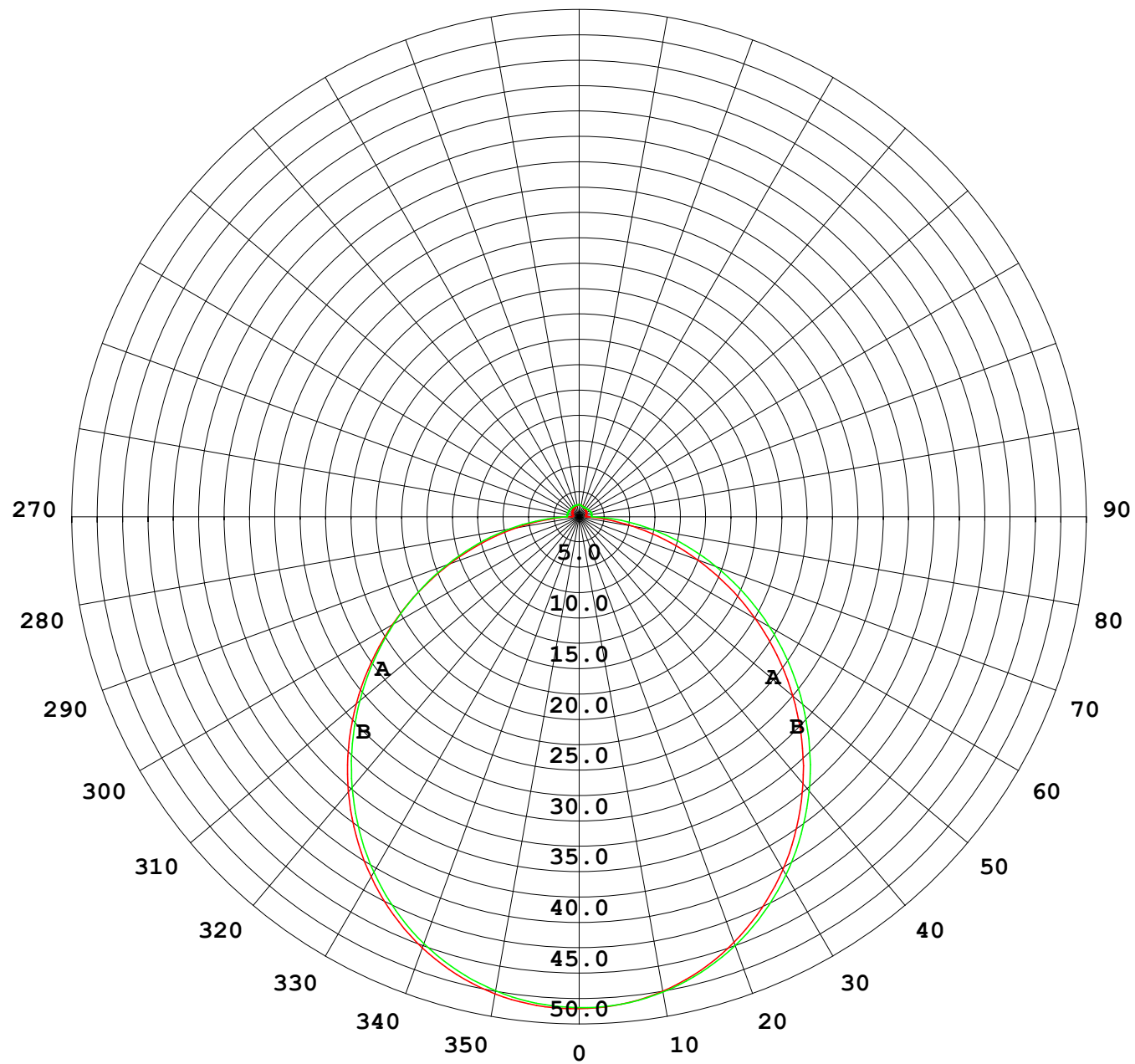
UNIT: cd

C (DEG) γ (DEG)	0	30	60	90	120	150	180	210	240	270	300	330						
0	48.4	48.4	48.4	48.4	48.4	48.4	48.4	48.4	48.4	48.4	48.4	48.4						
5	48.3	48.2	48.2	48.2	48.2	48.1	48.2	48.2	48.2	48.3	48.2	48.3						
10	47.7	47.6	47.5	47.5	47.4	47.4	47.4	47.5	47.6	47.6	47.7	47.7						
15	46.6	46.6	46.5	46.3	46.3	46.2	46.2	46.3	46.5	46.5	46.6	46.7						
20	45.1	45.1	44.9	44.8	44.7	44.6	44.6	44.7	44.9	45.0	45.2	45.2						
25	43.2	43.2	43.0	42.8	42.7	42.6	42.5	42.7	43.0	43.1	43.3	43.3						
30	40.9	40.9	40.7	40.5	40.4	40.2	40.1	40.3	40.7	40.8	41.1	41.0						
35	38.3	38.2	38.0	37.8	37.7	37.4	37.3	37.6	38.0	38.2	38.5	38.4						
40	35.3	35.2	35.1	34.8	34.7	34.4	34.3	34.6	35.1	35.3	35.5	35.5						
45	32.1	32.0	31.9	31.6	31.5	31.1	31.0	31.3	31.9	32.1	32.3	32.3						
50	28.6	28.5	28.5	28.2	28.0	27.6	27.5	27.8	28.5	28.8	29.0	28.8						
55	25.0	24.9	24.9	24.7	24.4	24.0	23.8	24.2	24.9	25.3	25.4	25.2						
60	21.2	21.1	21.3	21.1	20.7	20.2	20.0	20.5	21.2	21.7	21.7	21.4						
65	17.4	17.3	17.5	17.5	17.0	16.4	16.2	16.7	17.4	18.0	18.0	17.6						
70	13.5	13.6	13.8	13.8	13.3	12.6	12.4	12.9	13.7	14.4	14.3	13.9						
75	9.81	9.91	10.2	10.3	9.69	8.97	8.73	9.18	10.1	10.8	10.6	10.2						
80	6.27	6.41	6.77	6.97	6.23	5.51	5.28	5.68	6.57	7.42	7.06	6.66						
85	3.04	3.19	3.50	3.73	3.00	2.44	2.30	2.52	3.27	4.16	3.73	3.38						
90	0.86	0.99	1.13	1.22	1.19	0.93	0.76	0.82	1.01	1.31	1.02	0.96						
95	0.65	0.78	1.01	1.22	1.12	0.87	0.67	0.70	0.92	1.23	0.75	0.64						
100	0.65	0.79	1.00	1.21	1.12	0.88	0.68	0.68	0.93	1.25	0.77	0.63						
105	0.67	0.82	1.00	1.21	1.12	0.90	0.70	0.69	0.95	1.26	0.80	0.63						
110	0.71	0.84	1.02	1.20	1.12	0.93	0.73	0.72	0.96	1.26	0.82	0.66						
115	0.75	0.87	1.04	1.19	1.13	0.95	0.77	0.75	0.97	1.24	0.85	0.71						
120	0.80	0.91	1.05	1.18	1.13	0.98	0.80	0.79	0.97	1.21	0.86	0.74						
125	0.84	0.94	1.06	1.17	1.13	1.00	0.84	0.82	0.97	1.17	0.88	0.78						
130	0.88	0.97	1.07	1.16	1.13	1.03	0.88	0.86	0.98	1.13	0.90	0.81						
135	0.91	0.99	1.07	1.16	1.13	1.05	0.91	0.89	0.99	1.10	0.92	0.81						
140	0.95	1.02	1.09	1.17	1.14	1.07	0.95	0.93	1.01	1.07	0.94	0.85						
145	0.98	1.05	1.10	1.17	1.14	1.09	0.99	0.97	1.02	1.06	0.96	0.90						
150	1.01	1.07	1.12	1.19	1.15	1.11	1.03	1.01	1.05	1.05	0.99	0.93						
155	1.05	1.10	1.13	1.19	1.16	1.13	1.07	1.06	1.08	1.06	1.05	0.98						
160	1.09	1.12	1.15	1.19	1.16	1.15	1.10	1.10	1.12	1.09	1.09	1.02						
165	1.13	1.14	1.16	1.19	1.16	1.17	1.14	1.13	1.16	1.12	1.13	1.08						
170	1.15	1.18	1.17	1.19	1.17	1.19	1.16	1.16	1.19	1.16	1.16	1.13						
175	1.16	1.19	1.18	1.21	1.18	1.20	1.18	1.17	1.20	1.19	1.20	1.17						
180	1.17	1.19	1.20	1.21	1.20	1.20	1.18	1.19	1.20	1.20	1.20	1.19						

C Range: 0 - 360DEG  
C Interval: 30.0DEG  
Test Speed: HIGH  
Temperature:25.3℃  
Operators:  
Test Date:2025-03-18

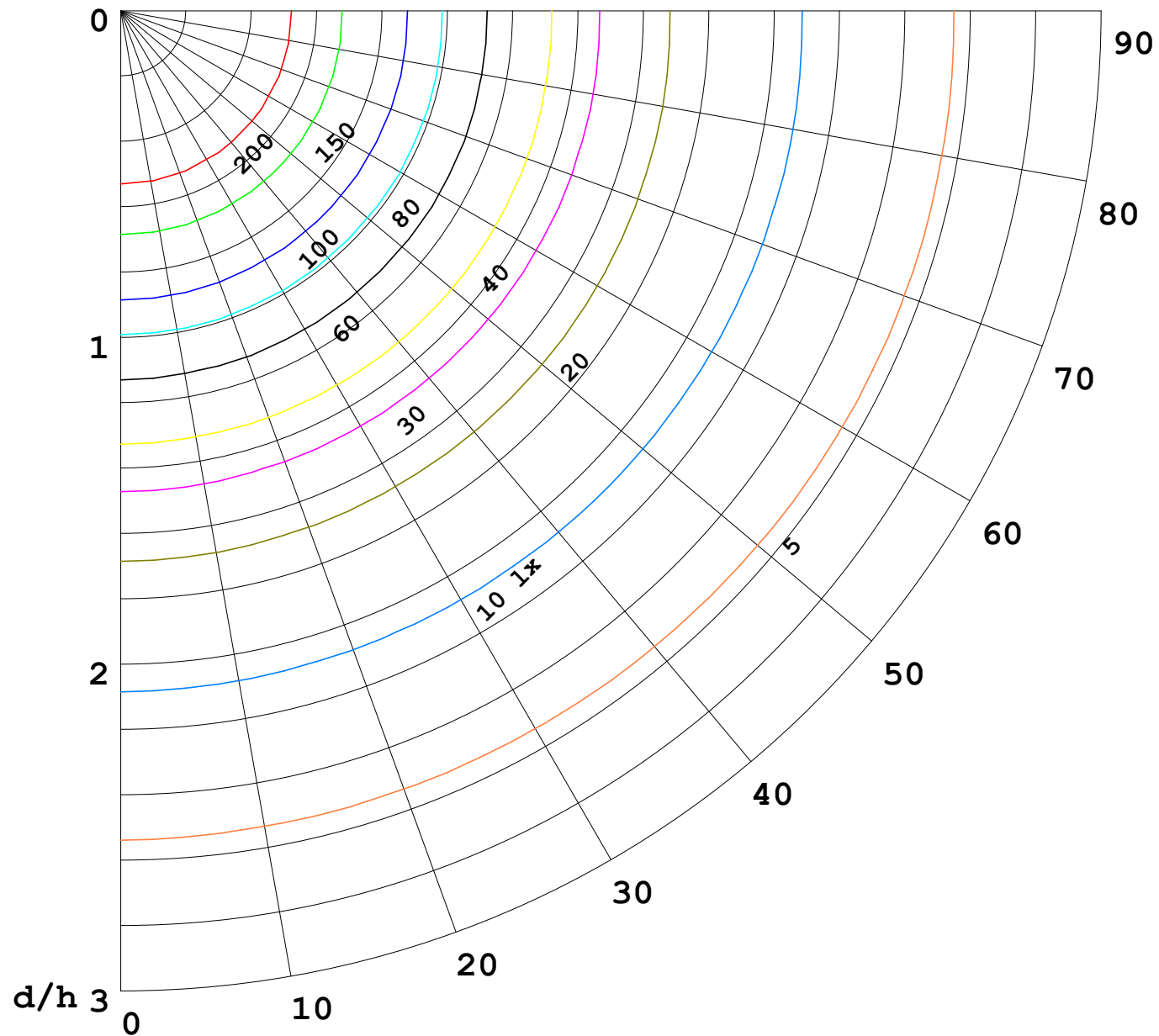
γ Range: 0 - 180DEG  
γ Interval: 1.0DEG  
Test System:EVERFINE GO-2000B\_V1 SYSTEM V2.00.488  
Humidity:65.0%  
Test Distance:6.360m [K=1.0000]  
Remarks:

I (cd)



1000 lm

$\kappa = 1$



F = 1000 lm  
 K = 0.7  
 Hcc = 0.8 m  
 Hfc = 0.0 m  
 Eave = 100 lx

	Pcc	Pw	Pfc
—————	70	50	30
—————	50	30	20

