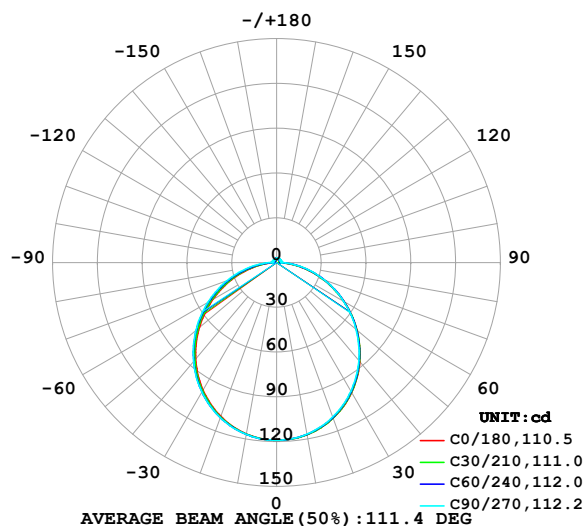


LUMINAIRE PHOTOMETRIC TEST REPORT

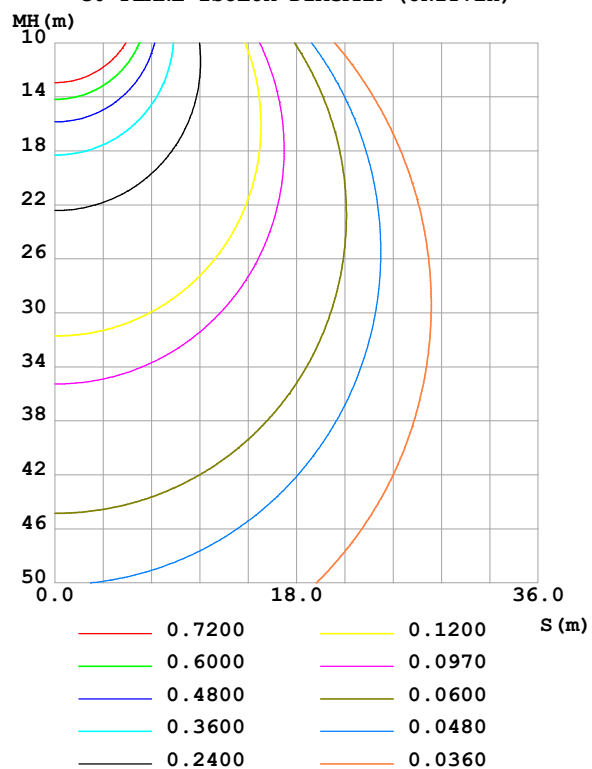
Test:U:24.00V I:0.9431A P:22.63W PF:1.000 Freq:0Hz Lamp Flux:357.184x1 lm		
NAME: SF15-24V-5050-70-SPI-RGBW(3000K)-ALL	TYPE:	WEIGHT:
SPEC.:	DIM.: Length=1m	SERIAL No.:
MFR.: OLympia lighting	SUR.:	Shielding Angle:

DATA OF LAMP		PHOTOMETRIC DATA Eff: 15.78 lm/W			
MODEL	5050	I _{max} (cd)	119.0	S/MH(C0/180)	1.24
NOMINAL POWER(W)	18	LOR(%)	100.0	S/MH(C90/270)	1.25
RATED VOLTAGE(V)	24	TOTAL FLUX(lm)	357.18	η UP,DN(C0-180)	2.2,47.8
NOMINAL FLUX(lm)	357.184	CIE CLASS	DIRECT	η UP,DN(C180-360)	2.0,47.9
LAMPS INSIDE	1	η up (%)	4.2	CIBSE SHR NOM	1.25
TEST VOLTAGE(V)		η down (%)	95.8	CIBSE SHR MAX	1.35

LUMINOUS INTENSITY DISTRIBUTION DIAGRAM



C0 PLANE ISOLUX DIAGRAM (UNIT:lx)



C Range: 0 - 360DEG
C Interval: 30.0DEG
Test Speed: HIGH
Temperature:25.3℃
Operators:
Test Date:2025-03-18

γ Range: 0 - 180DEG
γ Interval: 1.0DEG
Test System:EVERFINE GO-2000B_V1 SYSTEM V2.00.488
Humidity:65.0%
Test Distance:6.360m [K=1.0000]
Remarks:

ZONAL FLUX DIAGRAM

ZONAL FLUX DIAGRAM:

γ	C0	C45	C90	C135	C180	C225	C270	C315	γ	Φ zone	Φ total	%lum, lamp
10	117.1	117.0	116.7	116.7	116.6	116.8	116.9	117.2	0- 10	11.26	11.26	3.15,3.15
20	110.9	110.6	110.1	110.0	109.6	110.2	110.5	110.9	10- 20	32.21	43.48	12.2,12.2
30	100.6	100.2	99.54	99.29	98.66	99.69	100.2	100.7	20- 30	48.66	92.13	25.8,25.8
40	86.76	86.40	85.71	85.28	84.39	85.80	86.62	87.01	30- 40	58.37	150.5	42.1,42.1
50	70.33	70.05	69.55	68.78	67.59	69.39	70.60	70.80	40- 50	60.24	210.7	59,59
60	52.13	52.10	51.93	50.75	49.27	51.38	53.13	52.95	50- 60	54.37	265.1	74.2,74.2
70	33.38	33.71	34.03	32.27	30.59	32.86	35.21	34.53	60- 70	42.08	307.2	86,86
80	15.53	16.28	17.13	14.83	13.20	15.25	18.08	16.88	70- 80	25.81	333.0	93.2,93.2
90	2.186	2.697	3.033	2.740	1.957	2.275	3.108	2.525	80- 90	9.063	342.1	95.8,95.8
100	1.612	2.250	3.027	2.538	1.689	1.977	3.016	1.718	90-100	2.427	344.5	96.4,96.4
110	1.788	2.342	3.004	2.593	1.808	2.077	3.050	1.823	100-110	2.359	346.9	97.1,97.1
120	1.996	2.464	2.952	2.667	1.979	2.189	2.911	1.978	110-120	2.307	349.2	97.8,97.8
130	2.189	2.550	2.905	2.724	2.167	2.292	2.743	2.115	120-130	2.159	351.3	98.4,98.4
140	2.363	2.621	2.882	2.768	2.355	2.421	2.625	2.211	130-140	1.920	353.2	98.9,98.9
150	2.540	2.696	2.891	2.814	2.543	2.563	2.593	2.383	140-150	1.613	354.9	99.3,99.3
160	2.736	2.798	2.929	2.881	2.739	2.747	2.697	2.618	150-160	1.245	356.1	99.7,99.7
170	2.859	2.897	2.955	2.932	2.876	2.918	2.897	2.838	160-170	0.8011	356.9	99.9,99.9
180	2.927	2.977	3.007	2.977	2.939	2.975	3.001	2.976	170-180	0.2798	357.2	100,100
DEG	LUMINOUS INTENSITY:cd									UNIT:lm		

Conical surface Flux(90deg): 180.9 lm

%lum = 50.6%

%lamp = 50.6%

Conical surface Flux(130deg): 288.02 lm

%lum = 80.6%

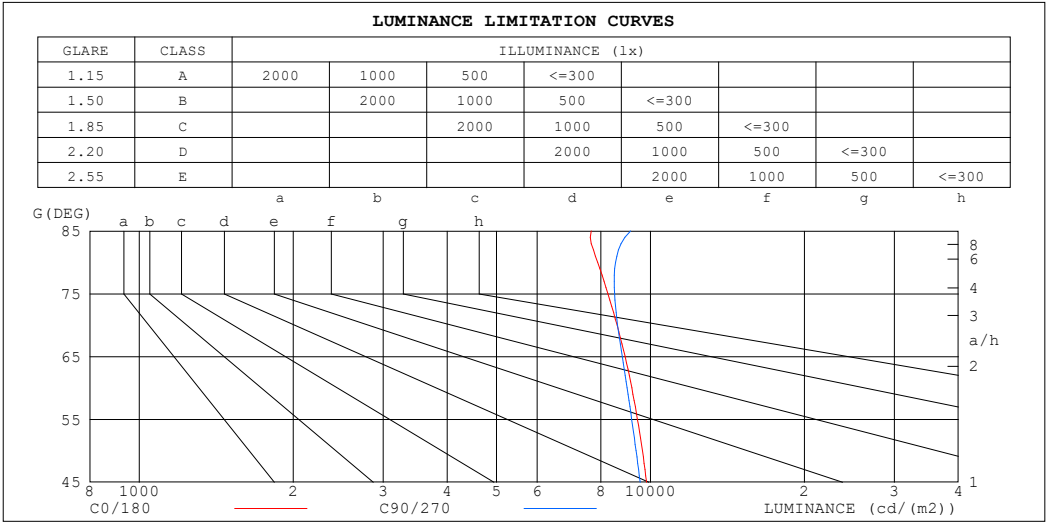
%lamp = 80.6%

C Range: 0 - 360DEG
 C Interval: 30.0DEG
 Test Speed: HIGH
 Temperature:25.3℃
 Operators:
 Test Date:2025-03-18

γ Range: 0 - 180DEG
 γ Interval: 1.0DEG
 Test System:EVERFINE GO-2000B_V1 SYSTEM V2.00.488
 Humidity:65.0%
 Test Distance:6.360m [K=1.0000]
 Remarks:

LUMINANCE LIMITATION CURVES

Test:U:24.00V I:0.9431A P:22.63W PF:1.000 Freq:0Hz Lamp Flux:357.184x1 lm		
NAME: SF15-24V-5050-70-SPI-RGBW(3000K)-ALL	TYPE:	WEIGHT:
SPEC.:	DIM.: Length=1m	SERIAL No.:
MFR.: OLympia lighting	SUR.:	Shielding Angle:



LUMINANCE cd/(m2)		
G (DEG)	C0/180	C90/270
85	7658	9148
80	7882	8545
75	8257	8509
70	8602	8621
65	8920	8805
60	9190	8998
55	9429	9187
50	9644	9374
45	9821	9542

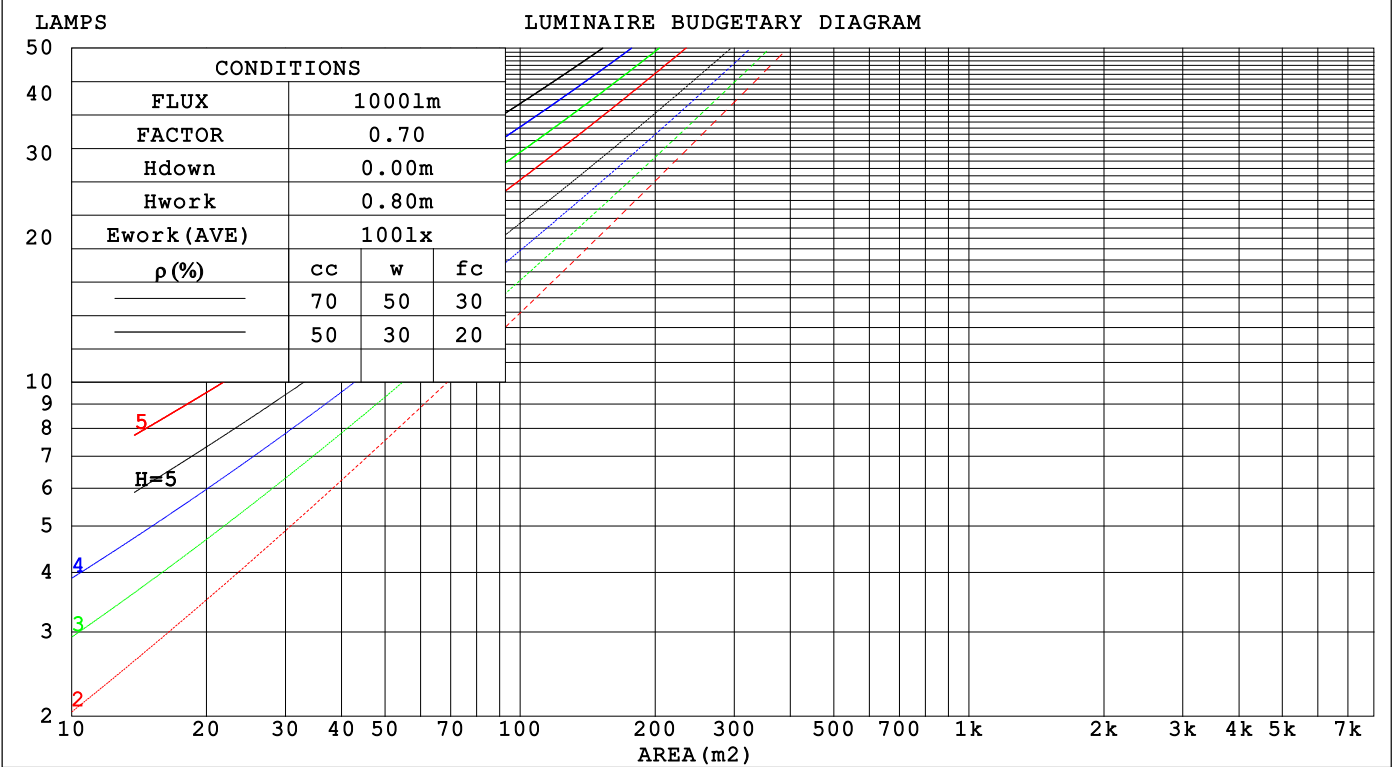
C Range: 0 - 360DEG
C Interval: 30.0DEG
Test Speed: HIGH
Temperature:25.3℃
Operators:
Test Date:2025-03-18

γ Range: 0 - 180DEG
γ Interval: 1.0DEG
Test System:EVERFINE GO-2000B_V1 SYSTEM V2.00.488
Humidity:65.0%
Test Distance:6.360m [K=1.0000]
Remarks:

CU AND LUMINAIRE BUDGETARY ESTIMATE DIAGRAM

Test:U:24.00V I:0.9431A P:22.63W PF:1.000 Freq:0Hz Lamp Flux:357.184x1 lm		
NAME: SF15-24V-5050-70-SPI-RGBW(3000K)-ALL	TYPE:	WEIGHT:
SPEC.:	DIM.: Length=1m	SERIAL No.:
MFR.: OLYMPIA lighting	SUR.:	Shielding Angle:

pcc	80%			70%			50%			30%			10%			0
pw	50%	30%	10%	50%	30%	10%	50%	30%	10%	50%	30%	10%	50%	30%	10%	0
pfc	20%			20%			20%			20%			20%			0
RCR	RCR:Room Cavity Ratio			Coefficients of Utilization(CU)												
0.0	1.18	1.18	1.18	1.15	1.15	1.15	1.09	1.09	1.09	1.03	1.03	1.03	.98	.98	.98	.96
1.0	1.02	.98	.94	.90	.96	.92	.95	.91	.88	.90	.87	.85	.86	.84	.82	.79
2.0	.89	.82	.76	.87	.80	.75	.83	.77	.73	.79	.74	.70	.75	.71	.68	.66
3.0	.78	.70	.63	.76	.69	.62	.73	.66	.61	.69	.64	.59	.66	.62	.58	.55
4.0	.69	.60	.53	.67	.59	.53	.64	.57	.52	.62	.55	.51	.59	.54	.49	.47
5.0	.62	.53	.46	.60	.52	.46	.58	.50	.45	.55	.49	.44	.53	.47	.43	.41
6.0	.56	.47	.40	.54	.46	.40	.52	.45	.39	.50	.43	.38	.48	.42	.38	.36
7.0	.50	.41	.35	.49	.41	.35	.47	.40	.35	.46	.39	.34	.44	.38	.33	.31
8.0	.46	.37	.31	.45	.37	.31	.43	.36	.31	.42	.35	.30	.40	.34	.30	.28
9.0	.42	.34	.28	.41	.33	.28	.40	.33	.28	.38	.32	.27	.37	.31	.27	.25
10.0	.39	.31	.26	.38	.31	.25	.37	.30	.25	.36	.29	.25	.34	.29	.25	.23



C Range: 0 - 360DEG
C Interval: 30.0DEG
Test Speed: HIGH
Temperature:25.3℃
Operators:
Test Date:2025-03-18

γ Range: 0 - 180DEG
γ Interval: 1.0DEG
Test System:EVERFINE GO-2000B_V1 SYSTEM V2.00.488
Humidity:65.0%
Test Distance:6.360m [K=1.0000]
Remarks:

WEC AND CCEC

Test:U:24.00V I:0.9431A P:22.63W PF:1.000 Freq:0Hz Lamp Flux:357.184x1 lm		
NAME: SF15-24V-5050-70-SPI-RGBW(3000K)-ALL	TYPE:	WEIGHT:
SPEC.:	DIM.: Length=1m	SERIAL No.:
MFR.: OLympia lighting	SUR.:	Shielding Angle:

pcc	80%			70%			50%			30%			10%			0														
pw	50%	30%	10%	50%	30%	10%	50%	30%	10%	50%	30%	10%	50%	30%	10%	0														
pfc	20%			20%			20%			20%			20%			0														
RCR	RCR:Room Cavity Ratio															Wall Exitance Coefficients(WEC)														
0.0																														
1.0	.317	.181	.057	.309	.176	.056	.293	.168	.054	.279	.161	.052	.266	.154	.050															
2.0	.295	.162	.050	.288	.158	.049	.274	.152	.047	.261	.146	.046	.249	.141	.044															
3.0	.272	.145	.043	.265	.142	.043	.252	.137	.042	.241	.132	.040	.230	.128	.039															
4.0	.250	.130	.038	.244	.128	.038	.233	.123	.037	.222	.119	.036	.213	.116	.035															
5.0	.230	.117	.034	.225	.116	.034	.215	.112	.033	.206	.109	.032	.197	.105	.032															
6.0	.213	.107	.031	.209	.105	.030	.200	.102	.030	.191	.099	.029	.184	.097	.029															
7.0	.198	.098	.028	.194	.097	.028	.186	.094	.027	.179	.092	.027	.171	.089	.026															
8.0	.185	.090	.025	.181	.089	.025	.174	.087	.025	.167	.085	.024	.161	.083	.024															
9.0	.173	.084	.023	.170	.083	.023	.163	.081	.023	.157	.079	.023	.151	.077	.022															
10.0	.163	.078	.022	.160	.077	.022	.154	.075	.021	.148	.074	.021	.143	.072	.021															

pcc	80%			70%			50%			30%			10%			0
pw	50%	30%	10%	50%	30%	10%	50%	30%	10%	50%	30%	10%	50%	30%	10%	0
pfc	20%			20%			20%			20%			20%			0
RCR	RCR:Room Cavity Ratio						Ceiling Cavity Exitance Coefficients (CCEC)									
0.0	.223	.223	.223	.190	.190	.190	.130	.130	.130	.075	.075	.075	.024	.024	.024	
1.0	.213	.189	.166	.183	.162	.143	.125	.111	.099	.072	.064	.058	.023	.021	.019	
2.0	.205	.165	.130	.176	.142	.113	.121	.098	.079	.070	.057	.046	.022	.018	.015	
3.0	.198	.147	.107	.169	.127	.093	.116	.088	.065	.067	.052	.038	.022	.017	.013	
4.0	.190	.134	.091	.163	.116	.079	.112	.081	.056	.065	.047	.033	.021	.015	.011	
5.0	.183	.124	.080	.157	.107	.070	.108	.075	.049	.063	.044	.029	.020	.014	.010	
6.0	.175	.115	.072	.151	.100	.063	.104	.070	.045	.060	.041	.027	.019	.013	.009	
7.0	.169	.109	.067	.145	.094	.058	.100	.066	.041	.058	.039	.024	.019	.013	.008	
8.0	.162	.103	.062	.140	.089	.054	.097	.063	.038	.056	.037	.023	.018	.012	.008	
9.0	.156	.098	.059	.134	.085	.051	.093	.060	.036	.054	.035	.022	.018	.012	.007	
10.0	.150	.094	.056	.130	.081	.049	.090	.057	.035	.052	.034	.021	.017	.011	.007	

C Range: 0 - 360DEG
C Interval: 30.0DEG
Test Speed: HIGH
Temperature:25.3℃
Operators:
Test Date:2025-03-18

γ Range: 0 - 180DEG
γ Interval: 1.0DEG
Test System:EVERFINE GO-2000B_V1 SYSTEM V2.00.488
Humidity:65.0%
Test Distance:6.360m [K=1.0000]
Remarks:

UGR(Unified Glare Rating) Table

Test:U:24.00V I:0.9431A P:22.63W PF:1.000 Freq:0Hz Lamp Flux:357.184x1 lm											
NAME: SF15-24V-5050-70-SPI-RGBW(3000K)-ALL						TYPE:		WEIGHT:			
SPEC.:						DIM.: Length=1m		SERIAL No.:			
MFR.: OLympia lighting						SUR.:		Shielding Angle:			
ceiling/cavity	0.7	0.7	0.5	0.5	0.3	0.7	0.7	0.5	0.5	0.3	
walls	0.5	0.3	0.5	0.3	0.3	0.5	0.3	0.5	0.3	0.3	
working plane	0.2	0.2	0.2	0.2	0.2	0.2	0.2	0.2	0.2	0.2	
Room dimensions		Viewed crosswise					Viewed endwise				
x = 2H y = 2H	2H	22.9	24.3	23.2	24.6	24.9	22.8	24.2	23.1	24.5	24.8
	3H	24.4	25.8	24.8	26.1	26.4	24.4	25.7	24.7	26.0	26.4
	4H	25.1	26.4	25.5	26.7	27.1	25.1	26.4	25.5	26.7	27.0
	6H	25.6	26.8	26.0	27.2	27.5	25.7	26.9	26.1	27.2	27.6
	8H	25.8	27.0	26.2	27.3	27.7	25.9	27.1	26.3	27.4	27.8
	12H	25.9	27.1	26.3	27.4	27.8	26.1	27.2	26.5	27.6	28.0
4H	2H	23.5	24.7	23.8	25.1	25.4	23.4	24.7	23.8	25.0	25.4
	3H	25.2	26.3	25.6	26.7	27.1	25.2	26.3	25.6	26.7	27.1
	4H	26.0	27.0	26.5	27.4	27.9	26.0	27.1	26.5	27.5	27.9
	6H	26.7	27.6	27.1	28.0	28.5	26.8	27.7	27.2	28.1	28.6
	8H	26.9	27.8	27.4	28.2	28.7	27.1	27.9	27.6	28.4	28.8
	12H	27.1	27.9	27.6	28.4	28.9	27.3	28.1	27.8	28.6	29.1
8H	4H	26.3	27.2	26.8	27.6	28.1	26.3	27.2	26.8	27.6	28.1
	6H	27.2	27.9	27.7	28.3	28.9	27.2	28.0	27.8	28.4	29.0
	8H	27.5	28.1	28.0	28.6	29.2	27.7	28.3	28.2	28.8	29.3
	12H	27.8	28.3	28.3	28.9	29.4	28.0	28.6	28.6	29.1	29.7
12H	4H	26.3	27.1	26.8	27.6	28.1	26.4	27.1	26.9	27.6	28.1
	6H	27.2	27.9	27.8	28.4	28.9	27.3	28.0	27.9	28.5	29.0
	8H	27.6	28.2	28.2	28.7	29.3	27.8	28.3	28.3	28.9	29.4
Variations with the observer position at spacings(CIE Pub.117):											
S = 1.0H		+ 0.1 / - 0.2					+ 0.1 / - 0.2				
1.5H		+ 0.2 / - 0.3					+ 0.2 / - 0.3				
2.0H		+ 0.1 / - 0.3					+ 0.1 / - 0.3				

CIE Pub.117, 357.2 lm Total Lamp Luminous Flux Correct (8log(F/F0) = -3.6)
Area: 0.0115 m2

C Range: 0 - 360DEG
C Interval: 30.0DEG
Test Speed: HIGH
Temperature:25.3℃
Operators:
Test Date:2025-03-18

γ Range: 0 - 180DEG
γ Interval: 1.0DEG
Test System:EVERFINE GO-2000B_V1 SYSTEM V2.00.488
Humidity:65.0%
Test Distance:6.360m [K=1.0000]
Remarks:

UTILIZATION FACTORS TABLE

Test:U:24.00V I:0.9431A P:22.63W PF:1.000 Freq:0Hz Lamp Flux:357.184x1 lm		
NAME: SF15-24V-5050-70-SPI-RGBW(3000K)-ALL	TYPE:	WEIGHT:
SPEC.:	DIM.: Length=1m	SERIAL No.:
MFR.: OLympia lighting	SUR.:	Shielding Angle:

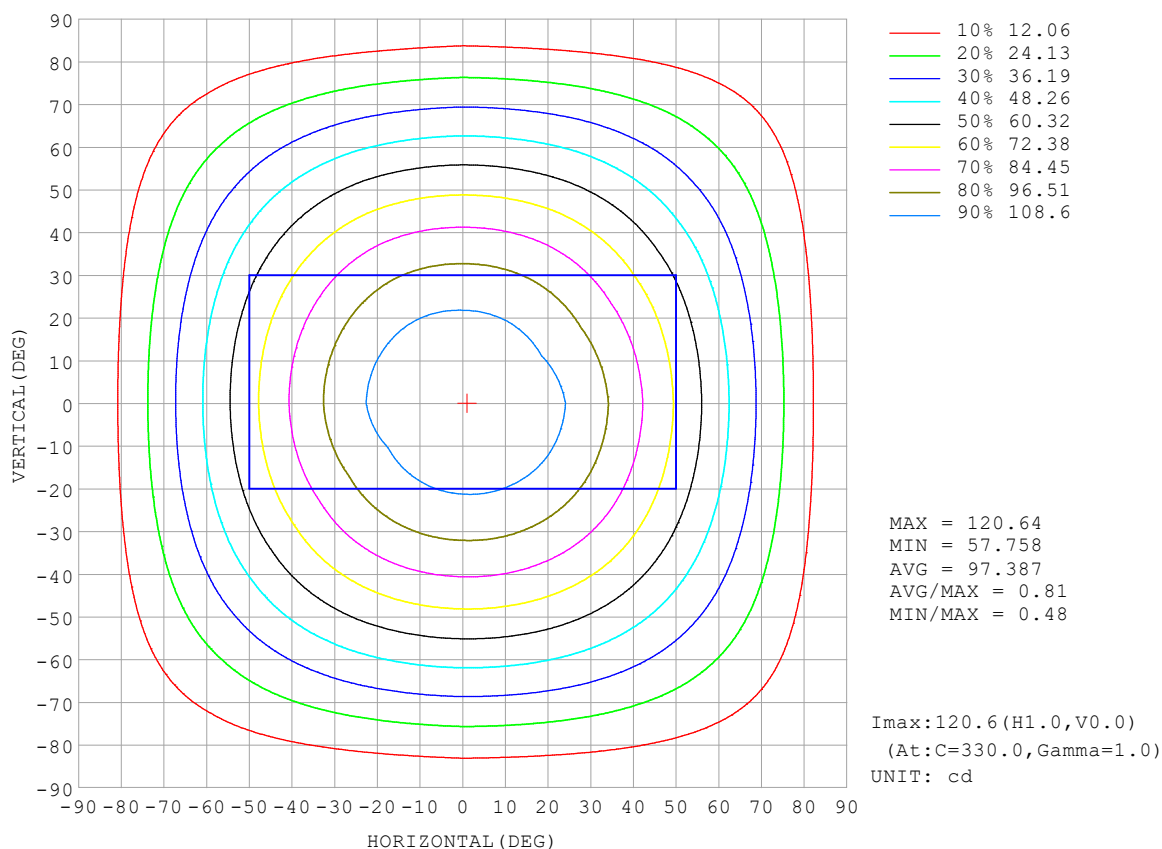
REFLECTANCE										
Ceiling	0.8	0.8	0.8	0.7	0.7	0.7	0.5	0.5	0.5	0
Walls	0.7	0.5	0.3	0.7	0.5	0.3	0.7	0.5	0.3	0
Working plane	0.2	0.2	0.2	0.2	0.2	0.2	0.2	0.2	0.2	0
ROOM INDEX	UTILIZATION FACTORS (PERCENT) $k(RI) \times RCR = 5$									
$k = 0.60$	56	44	37	55	44	37	54	43	37	30
0.80	66	54	47	65	54	46	63	53	46	39
1.00	74	63	55	73	62	55	70	63	54	47
1.25	81	70	63	80	70	63	76	68	62	54
1.50	86	76	69	84	75	68	81	73	67	59
2.00	93	84	78	91	83	77	87	80	75	66
2.50	97	89	83	95	87	82	90	84	79	70
3.00	100	93	88	98	91	86	93	88	84	74
4.00	105	99	94	102	96	92	97	93	89	79
5.00	107	102	98	104	100	96	99	95	92	82
ROOM INDEX	UF(total)									Direct
According to DIN EN 13032-2 2004			Suspended					SHRNOM = 1.25		

C Range: 0 - 360DEG
 C Interval: 30.0DEG
 Test Speed: HIGH
 Temperature: 25.3°C
 Operators:
 Test Date: 2025-03-18

γ Range: 0 - 180DEG
 γ Interval: 1.0DEG
 Test System: EVERFINE GO-2000B_V1 SYSTEM V2.00.488
 Humidity: 65.0%
 Test Distance: 6.360m [K=1.0000]
 Remarks:

ISOCANDELA DIAGRAM

Test:U:24.00V I:0.9431A P:22.63W PF:1.000 Freq:0Hz Lamp Flux:357.184x1 lm		
NAME: SF15-24V-5050-70-SPI-RGBW(3000K)-ALL	TYPE:	WEIGHT:
SPEC.:	DIM.: Length=1m	SERIAL No.:
MFR.: OLympia lighting	SUR.:	Shielding Angle:

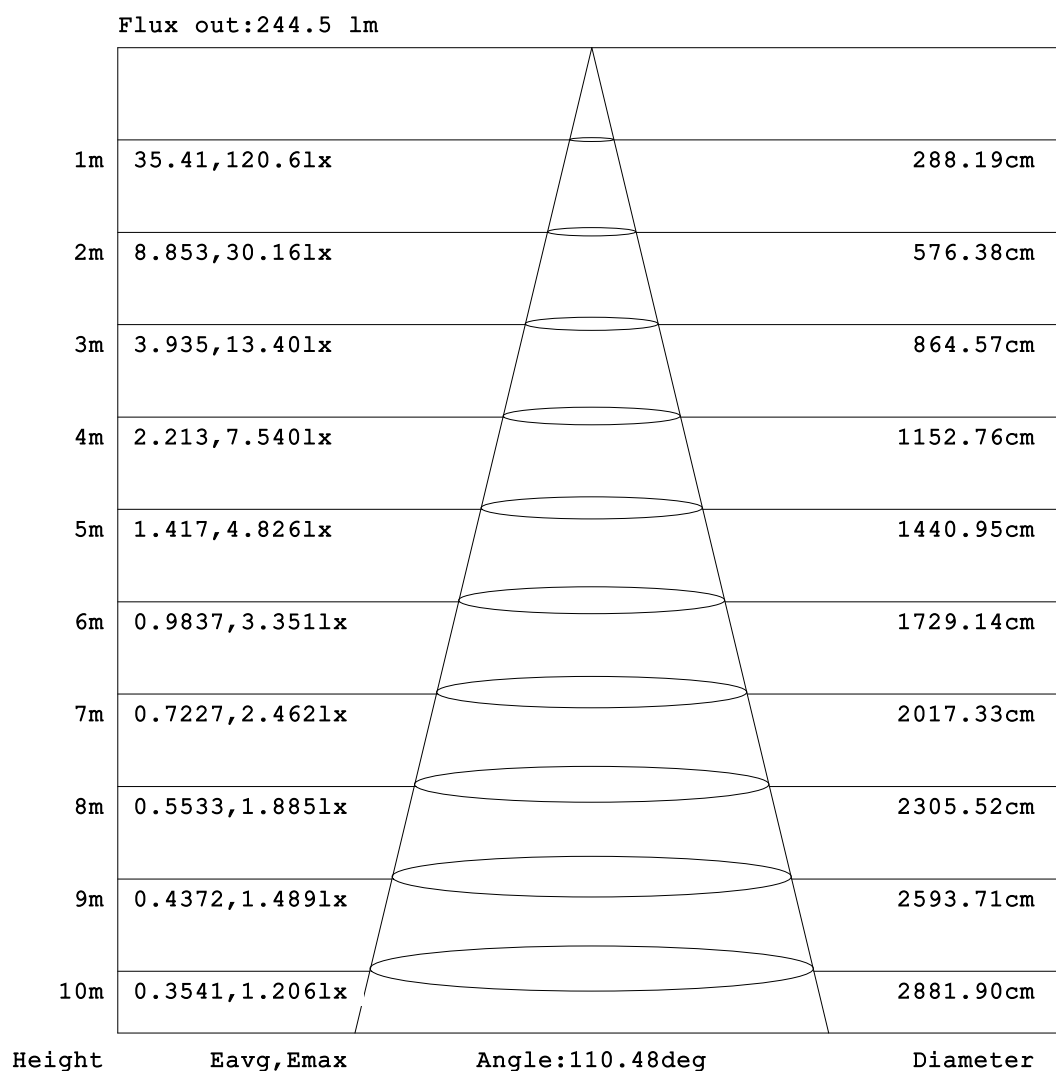


C Range: 0 - 360DEG
C Interval: 30.0DEG
Test Speed: HIGH
Temperature:25.3℃
Operators:
Test Date:2025-03-18

γ Range: 0 - 180DEG
γ Interval: 1.0DEG
Test System:EVERFINE GO-2000B_V1 SYSTEM V2.00.488
Humidity:65.0%
Test Distance:6.360m [K=1.0000]
Remarks:

AAI Figure

Test:U:24.00V I:0.9431A P:22.63W PF:1.000 Freq:0Hz Lamp Flux:357.184x1 lm		
NAME: SF15-24V-5050-70-SPI-RGBW(3000K)-ALL	TYPE:	WEIGHT:
SPEC.:	DIM.: Length=1m	SERIAL No.:
MFR.: OLympia lighting	SUR.:	Shielding Angle:



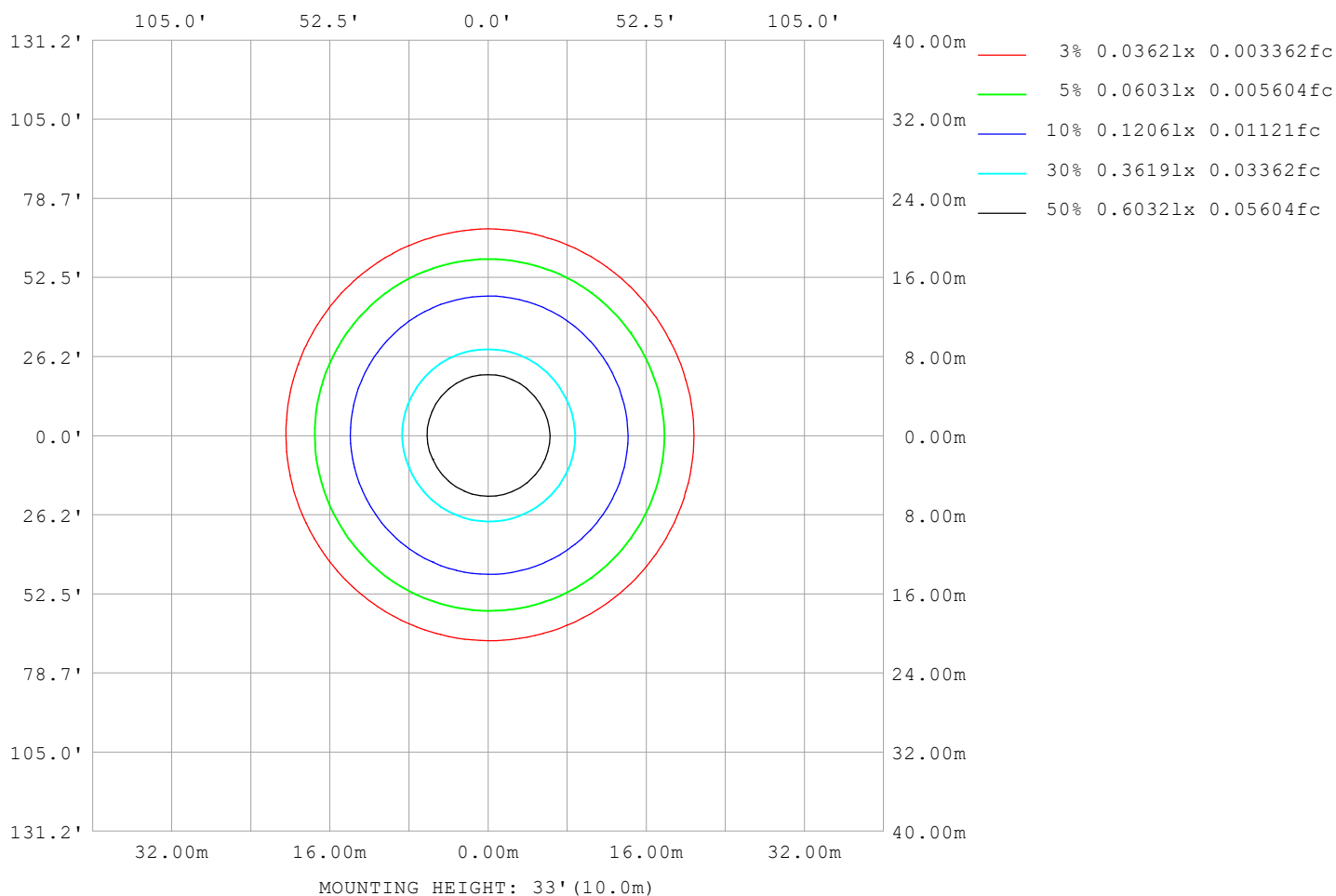
Note:The Curves indicate the illuminated area and the average illumination when the luminaire is at different distance.

C Range: 0 - 360DEG
C Interval: 30.0DEG
Test Speed: HIGH
Temperature:25.3℃
Operators:
Test Date:2025-03-18

γ Range: 0 - 180DEG
γ Interval: 1.0DEG
Test System:EVERFINE GO-2000B_V1 SYSTEM V2.00.488
Humidity:65.0%
Test Distance:6.360m [K=1.0000]
Remarks:

ISOLUX DIAGRAM

Test:U:24.00V I:0.9431A P:22.63W PF:1.000 Freq:0Hz Lamp Flux:357.184x1 lm		
NAME: SF15-24V-5050-70-SPI-RGBW(3000K)-ALL	TYPE:	WEIGHT:
SPEC.:	DIM.: Length=1m	SERIAL No.:
MFR.: OLympia lighting	SUR.:	Shielding Angle:



C Range: 0 - 360DEG
C Interval: 30.0DEG
Test Speed: HIGH
Temperature: 25.3°C
Operators:
Test Date: 2025-03-18

γ Range: 0 - 180DEG
γ Interval: 1.0DEG
Test System: EVERFINE GO-2000B_V1 SYSTEM V2.00.488
Humidity: 65.0%
Test Distance: 6.360m [K=1.0000]
Remarks:

LED Avg.L Report

Test:U:24.00V I:0.9431A P:22.63W PF:1.000 Freq:0Hz Lamp Flux:357.184x1 lm		
NAME: SF15-24V-5050-70-SPI-RGBW(3000K)-ALL	TYPE:	WEIGHT:
SPEC.:	DIM.: Length=1m	SERIAL No.:
MFR.: OLympia lighting	SUR.:	Shielding Angle:

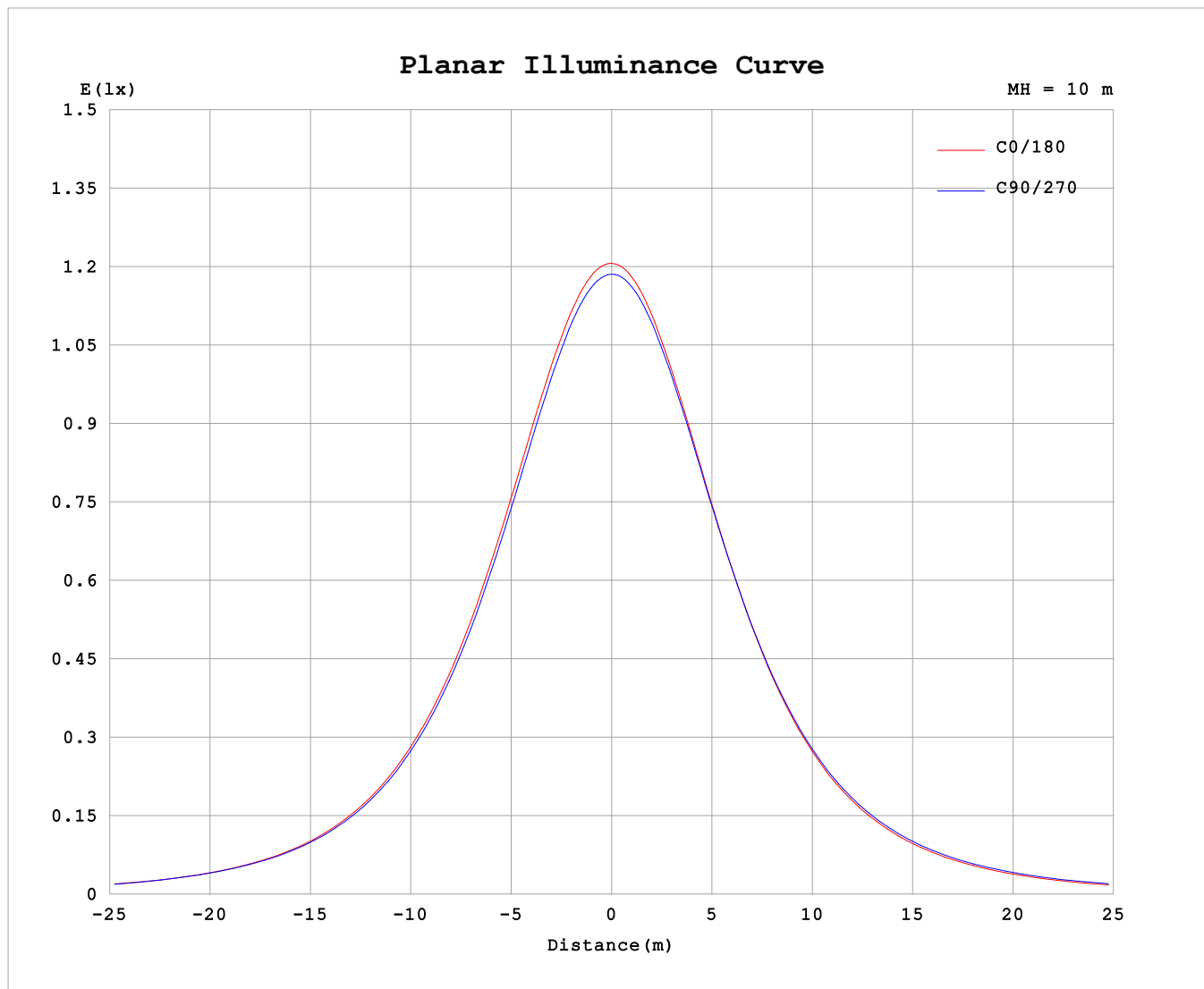
AvgL	cd/m2
L_0~180 (65) av	8505
L_0~180 (75) av	7707
L_0~180 (85) av	6656
L_90~270 (65) av	8961
L_90~270 (75) av	8715
L_90~270 (85) av	9620
L_45 (65) av	8758
L_45 (75) av	8189
L_45 (85) av	7783

Standard: GB/T 29293-2012

C Range: 0 - 360DEG
C Interval: 30.0DEG
Test Speed: HIGH
Temperature:25.3℃
Operators:
Test Date:2025-03-18

γ Range: 0 - 180DEG
γ Interval: 1.0DEG
Test System:EVERFINE GO-2000B_V1 SYSTEM V2.00.488
Humidity:65.0%
Test Distance:6.360m [K=1.0000]
Remarks:

Planar Illuminance Curve



C Range: 0 - 360DEG
C Interval: 30.0DEG
Test Speed: HIGH
Temperature: 25.3 °C
Operators:
Test Date: 2025-03-18

γ Range: 0 - 180DEG
 γ Interval: 1.0DEG
Test System: EVERFINE GO-2000B_V1 SYSTEM V2.00.488
Humidity: 65.0%
Test Distance: 6.360m [K=1.0000]
Remarks:

LUMINOUS DISTRIBUTION INTENSITY DATA

Test:U:24.00V I:0.9431A P:22.63W PF:1.000 Freq:0Hz Lamp Flux:357.184x1 lm		
NAME: SF15-24V-5050-70-SPI-RGBW(3000K)-ALL	TYPE:	WEIGHT:
SPEC.:	DIM.: Length=1m	SERIAL No.:
MFR.: OLYMPIA lighting	SUR.:	Shielding Angle:

Table--1

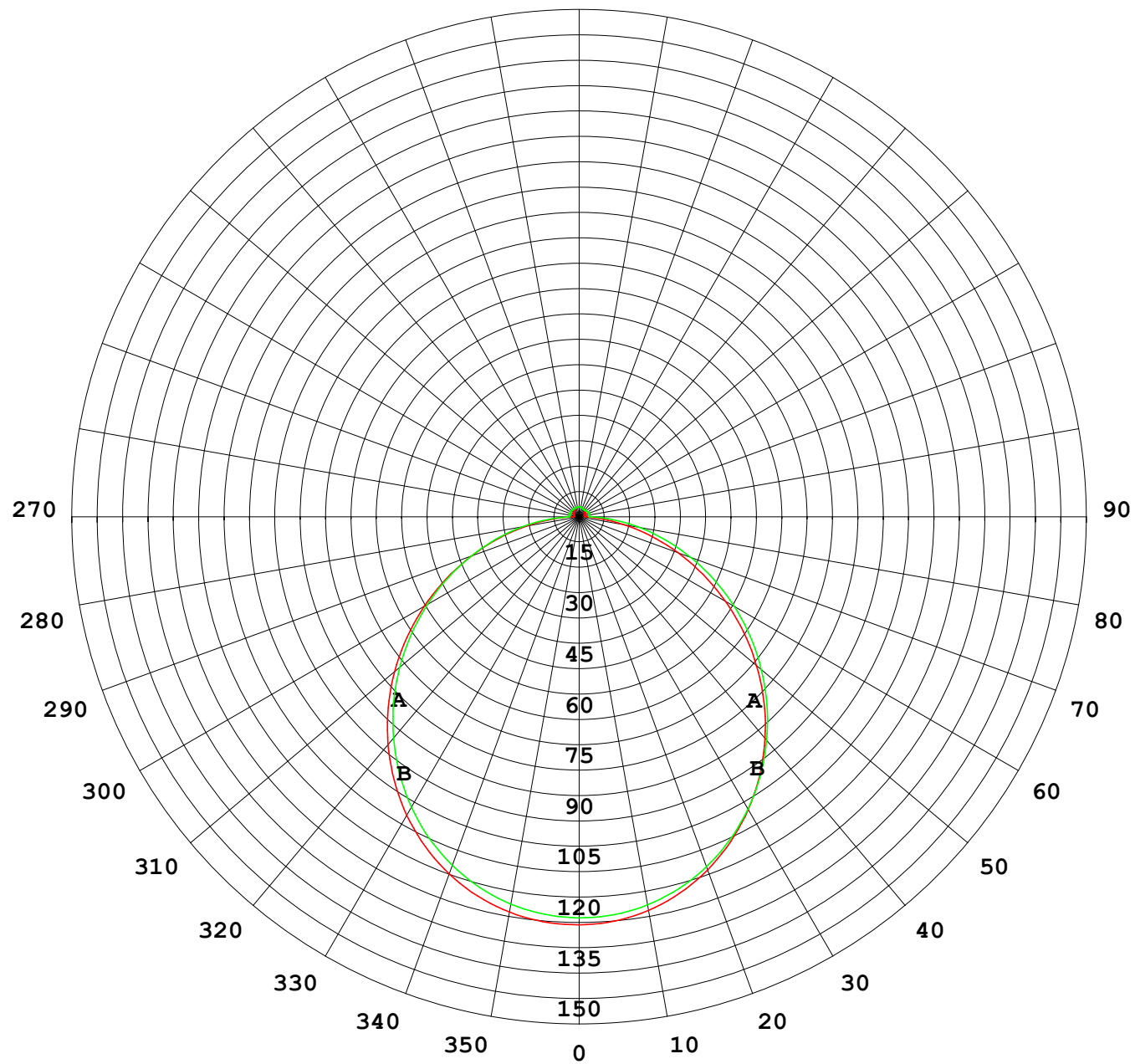
UNIT: cd

C (DEG) γ (DEG)	0	30	60	90	120	150	180	210	240	270	300	330						
0	119	119	119	119	119	119	119	119	119	119	119	119						
5	119	119	118	118	118	118	118	118	119	119	119	119						
10	117	117	117	117	117	117	117	117	117	117	117	117						
15	115	115	114	114	114	114	114	114	114	114	115	115						
20	111	111	110	110	110	110	110	110	110	111	111	111						
25	106	106	106	105	105	105	105	105	106	106	106	106						
30	101	100	100.0	99.5	99.4	99.2	98.7	99.3	100	100	101	101						
35	94.1	93.9	93.4	93.0	92.8	92.5	91.9	92.6	93.6	93.8	94.3	94.2						
40	86.8	86.6	86.2	85.7	85.5	85.0	84.4	85.2	86.4	86.6	87.1	86.9						
45	78.8	78.7	78.3	77.9	77.6	77.0	76.2	77.2	78.5	78.8	79.3	79.0						
50	70.3	70.2	69.9	69.6	69.2	68.4	67.6	68.6	70.1	70.6	71.0	70.6						
55	61.4	61.2	61.2	60.8	60.4	59.4	58.6	59.7	61.3	62.0	62.2	61.8						
60	52.1	52.0	52.2	51.9	51.3	50.2	49.3	50.5	52.3	53.1	53.3	52.6						
65	42.8	42.7	43.1	42.9	42.1	40.9	39.9	41.2	43.0	44.2	44.2	43.3						
70	33.4	33.4	34.0	34.0	33.0	31.6	30.6	31.9	33.8	35.2	35.0	34.1						
75	24.2	24.5	25.1	25.4	24.1	22.6	21.6	22.8	24.9	26.5	26.0	25.1						
80	15.5	15.9	16.7	17.1	15.6	14.1	13.2	14.2	16.3	18.1	17.3	16.4						
85	7.57	7.96	8.64	9.20	7.64	6.35	5.77	6.43	8.17	10.1	9.14	8.38						
90	2.19	2.56	2.84	3.03	3.04	2.44	1.96	2.06	2.50	3.11	2.54	2.51						
95	1.60	1.97	2.53	3.03	2.86	2.21	1.67	1.73	2.22	2.95	1.81	1.61						
100	1.61	1.98	2.52	3.03	2.85	2.23	1.69	1.70	2.26	3.02	1.88	1.56						
105	1.69	2.03	2.56	3.02	2.85	2.27	1.74	1.73	2.31	3.04	1.94	1.59						
110	1.79	2.09	2.60	3.00	2.86	2.33	1.81	1.80	2.35	3.05	2.00	1.65						
115	1.89	2.18	2.63	2.98	2.87	2.40	1.89	1.89	2.38	2.99	2.08	1.76						
120	2.00	2.27	2.66	2.95	2.87	2.46	1.98	1.99	2.39	2.91	2.11	1.85						
125	2.10	2.34	2.67	2.93	2.87	2.52	2.08	2.08	2.40	2.82	2.16	1.94						
130	2.19	2.41	2.69	2.91	2.87	2.57	2.17	2.16	2.42	2.74	2.21	2.02						
135	2.28	2.47	2.70	2.89	2.87	2.62	2.26	2.25	2.45	2.67	2.26	2.02						
140	2.36	2.53	2.71	2.88	2.86	2.67	2.36	2.35	2.49	2.62	2.31	2.11						
145	2.45	2.58	2.73	2.88	2.86	2.71	2.45	2.45	2.53	2.60	2.38	2.22						
150	2.54	2.64	2.75	2.89	2.87	2.76	2.54	2.54	2.59	2.59	2.44	2.32						
155	2.64	2.70	2.79	2.91	2.88	2.82	2.65	2.64	2.67	2.62	2.60	2.44						
160	2.74	2.76	2.83	2.93	2.90	2.86	2.74	2.73	2.76	2.70	2.68	2.56						
165	2.82	2.82	2.86	2.94	2.91	2.90	2.83	2.82	2.86	2.79	2.77	2.66						
170	2.86	2.90	2.89	2.95	2.92	2.94	2.88	2.89	2.94	2.90	2.88	2.79						
175	2.90	2.95	2.94	2.99	2.96	2.97	2.93	2.93	3.00	2.97	2.97	2.88						
180	2.93	2.97	2.98	3.01	2.98	2.97	2.94	2.95	3.00	3.00	3.00	2.95						

C Range: 0 - 360DEG
C Interval: 30.0DEG
Test Speed: HIGH
Temperature:25.3℃
Operators:
Test Date:2025-03-18

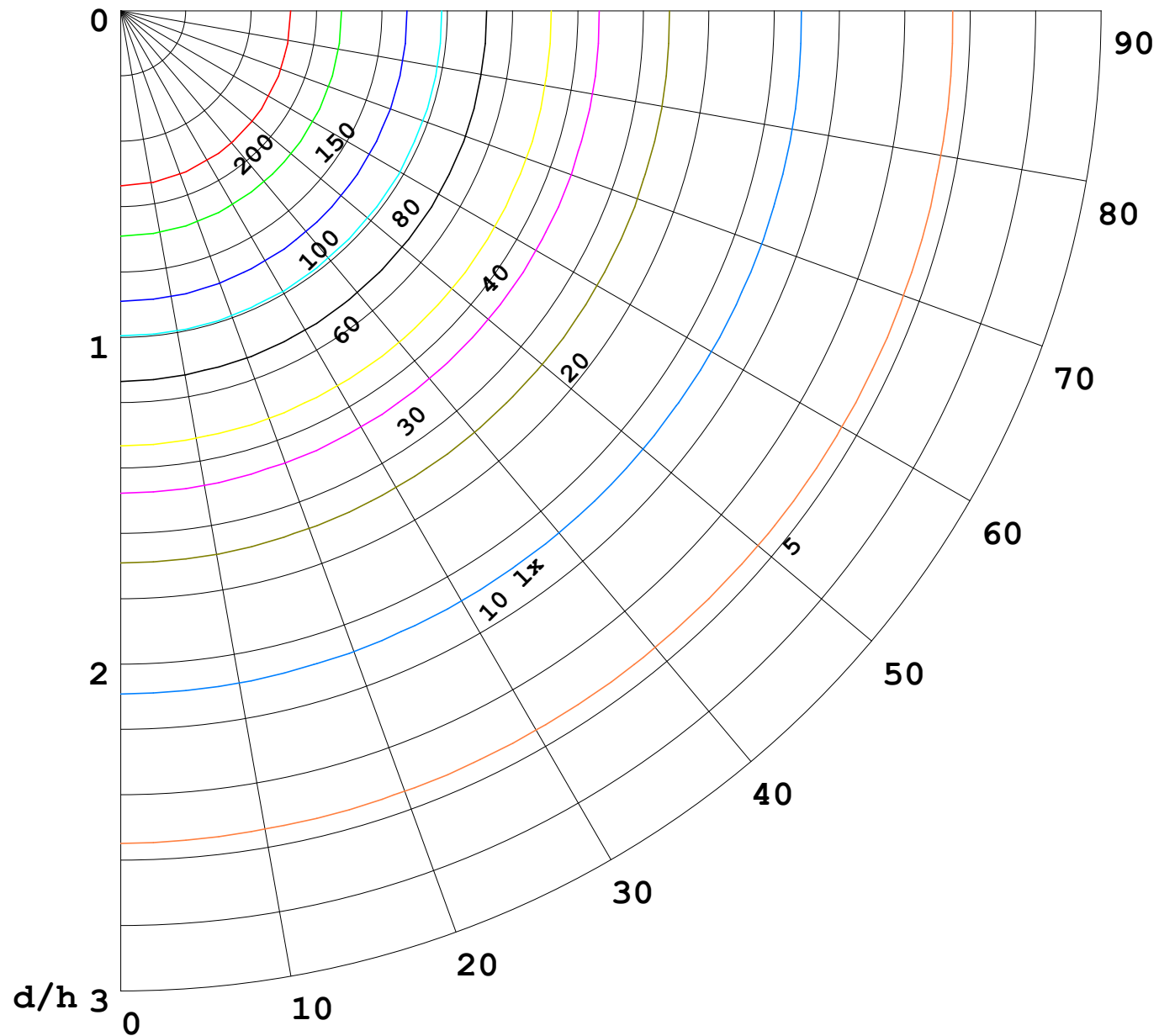
γ Range: 0 - 180DEG
γ Interval: 1.0DEG
Test System:EVERFINE GO-2000B_V1 SYSTEM V2.00.488
Humidity:65.0%
Test Distance:6.360m [K=1.0000]
Remarks:

I (cd)



1000 lm

$\kappa = 1$



F = 1000 lm
 K = 0.7
 Hcc = 0.8 m
 Hfc = 0.0 m
 Eave = 100 lx

	Pcc	Pw	Pfc
————	70	50	30
————	50	30	20

