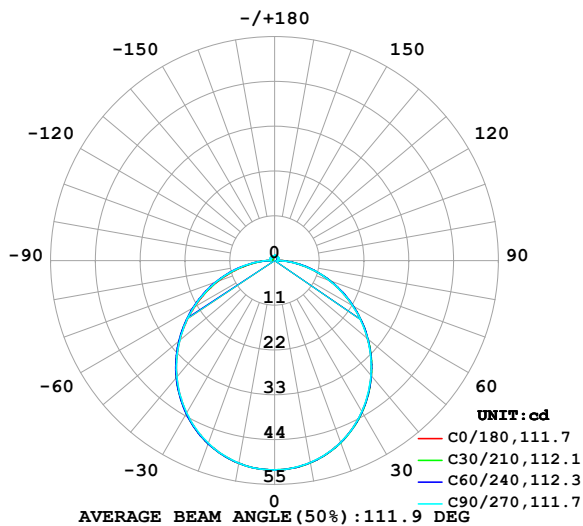


LUMINAIRE PHOTOMETRIC TEST REPORT

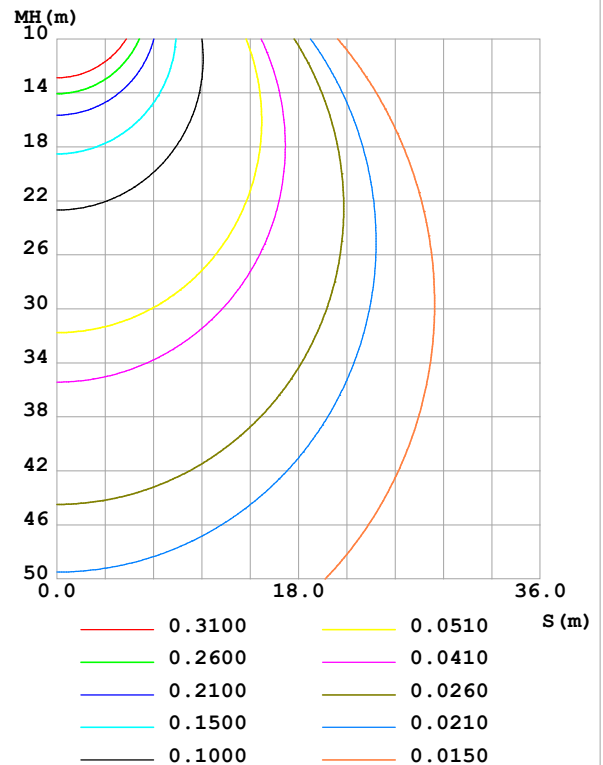
Test:U:24.00V I:0.4696A P:11.27W PF:1.000 Freq:0Hz Lamp Flux:155.451x1 lm		
NAME: SF15-24V-5050-70-SPI-RGBW(2700K)-G	TYPE:	WEIGHT:
SPEC.:	DIM.: Length=1m	SERIAL No.:
MFR.: OLympia lighting	SUR.:	Shielding Angle:

DATA OF LAMP		PHOTOMETRIC DATA				Eff: 13.79 lm/W
MODEL	5050	Imax(cd)	51.41	S/MH(C0/180)	1.25	
NOMINAL POWER(W)		LOR(%)	100.0	S/MH(C90/270)	1.25	
RATED VOLTAGE(V)	24	TOTAL FLUX(lm)	155.45	η UP,DN(C0-180)	1.9,47.4	
NOMINAL FLUX(lm)	155.451	CIE CLASS	DIRECT	η UP,DN(C180-360)	2.2,48.4	
LAMPS INSIDE	1	η up(%)	4.1	CIBSE SHR NOM	1.25	
TEST VOLTAGE(V)		η down(%)	95.9	CIBSE SHR MAX	1.35	

LUMINOUS INTENSITY DISTRIBUTION DIAGRAM



C0 PLANE ISOLUX DIAGRAM (UNIT:lx)



C Range: 0 - 360DEG
C Interval: 30.0DEG
Test Speed: HIGH
Temperature: 25.3 °C
Operators:
Test Date: 2025-03-06

γ Range: 0 - 180DEG
 γ Interval: 1.0DEG
Test System: EVERFINE GO-2000B_V1 SYSTEM V2.00.488
Humidity: 65.0%
Test Distance: 6.360m [K=1.0000]
Remarks:

ZONAL FLUX DIAGRAM

ZONAL FLUX DIAGRAM:

γ	C0	C45	C90	C135	C180	C225	C270	C315	γ	Φ zone	Φ total	%lum, lamp
10	50.42	50.44	50.39	50.46	50.55	50.57	50.53	50.52	0- 10	4.864	4.864	3.13,3.13
20	47.53	47.56	47.50	47.62	47.77	47.84	47.73	47.73	10- 20	13.91	18.78	12.1,12.1
30	42.91	42.98	42.89	43.07	43.32	43.42	43.23	43.21	20- 30	21.01	39.79	25.6,25.6
40	36.92	36.97	36.82	37.09	37.41	37.58	37.37	37.26	30- 40	25.22	65.01	41.8,41.8
50	29.84	29.93	29.76	30.05	30.44	30.67	30.46	30.30	40- 50	26.07	91.08	58.6,58.6
60	22.18	22.28	22.13	22.35	22.75	23.08	22.91	22.72	50- 60	23.63	114.7	73.8,73.8
70	14.37	14.49	14.36	14.44	14.77	15.19	15.15	14.98	60- 70	18.46	133.2	85.7,85.7
80	6.918	7.051	6.924	6.881	7.101	7.544	7.672	7.566	70- 80	11.53	144.7	93.1,93.1
90	1.382	1.210	0.7017	1.231	1.618	1.676	1.207	1.571	80- 90	4.323	149.0	95.9,95.9
100	0.8884	0.8487	0.7854	0.7547	0.7611	1.023	1.184	1.051	90-100	1.106	150.1	96.6,96.6
110	0.8623	0.8400	0.8836	0.8283	0.7182	1.032	1.227	1.042	100-110	0.9674	151.1	97.2,97.2
120	0.8651	0.8876	0.9529	0.9135	0.7989	1.067	1.242	1.043	110-120	0.9437	152.0	97.8,97.8
130	0.9372	0.9555	1.028	0.9943	0.8826	1.100	1.244	1.075	120-130	0.8969	152.9	98.4,98.4
140	0.9892	1.039	1.097	1.072	0.9605	1.130	1.244	1.100	130-140	0.8160	153.8	98.9,98.9
150	1.067	1.113	1.175	1.144	1.053	1.160	1.244	1.134	140-150	0.6958	154.5	99.4,99.4
160	1.145	1.184	1.239	1.205	1.139	1.195	1.244	1.178	150-160	0.5383	155.0	99.7,99.7
170	1.203	1.234	1.262	1.250	1.208	1.233	1.244	1.229	160-170	0.3434	155.3	99.9,99.9
180	1.234	1.251	1.265	1.258	1.234	1.251	1.265	1.258	170-180	0.1186	155.5	100,100
DEG	LUMINOUS INTENSITY:cd									UNIT:lm		

Conical surface Flux(90deg): 78.151 lm

%lum = 50.3%

%lamp = 50.3%

Conical surface Flux(130deg): 124.72 lm

%lum = 80.2%

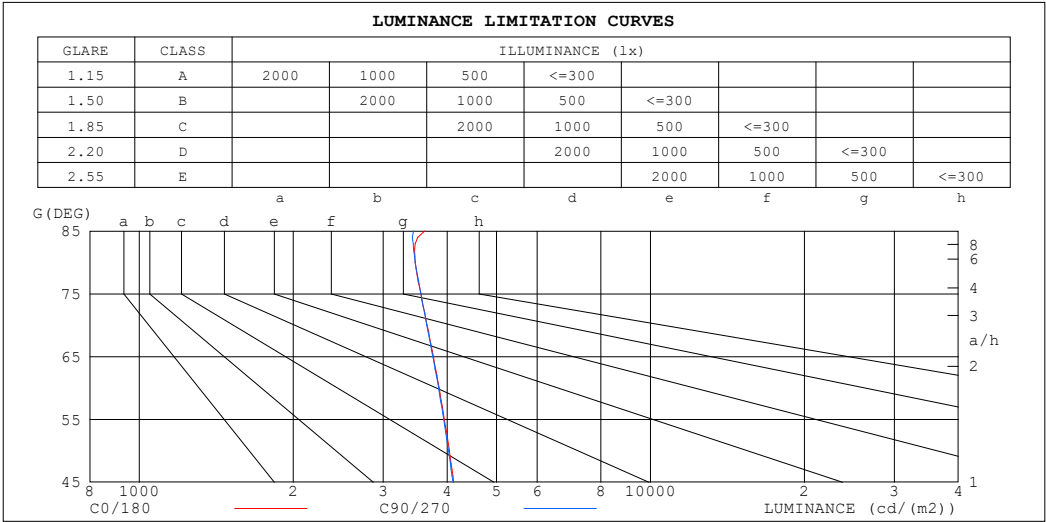
%lamp = 80.2%

C Range: 0 - 360DEG
 C Interval: 30.0DEG
 Test Speed: HIGH
 Temperature:25.3℃
 Operators:
 Test Date:2025-03-06

γ Range: 0 - 180DEG
 γ Interval: 1.0DEG
 Test System:EVERFINE GO-2000B_V1 SYSTEM V2.00.488
 Humidity:65.0%
 Test Distance:6.360m [K=1.0000]
 Remarks:

LUMINANCE LIMITATION CURVES

Test:U:24.00V I:0.4696A P:11.27W PF:1.000 Freq:0Hz Lamp Flux:155.451x1 lm		
NAME: SF15-24V-5050-70-SPI-RGBW(2700K)-G	TYPE:	WEIGHT:
SPEC.:	DIM.: Length=1m	SERIAL No.:
MFR.: OLympia lighting	SUR.:	Shielding Angle:



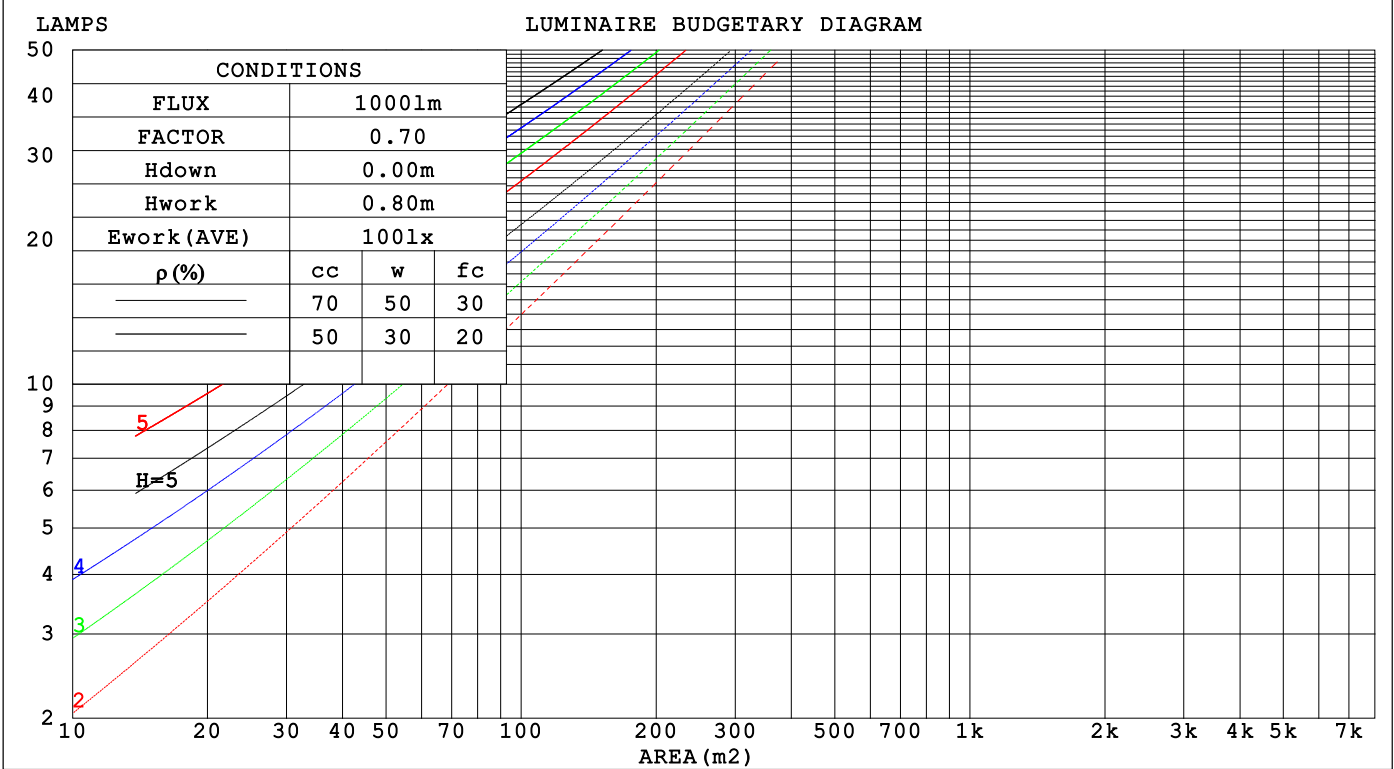
LUMINANCE cd/(m2)		
G (DEG)	C0/180	C90/270
85	3618	3437
80	3467	3466
75	3554	3557
70	3657	3650
65	3760	3751
60	3860	3848
55	3951	3938
50	4040	4024
45	4120	4104

C Range: 0 - 360DEG	γ Range: 0 - 180DEG
C Interval: 30.0DEG	γ Interval: 1.0DEG
Test Speed: HIGH	Test System:EVERFINE GO-2000B_V1 SYSTEM V2.00.488
Temperature:25.3℃	Humidity:65.0%
Operators:	Test Distance:6.360m [K=1.0000]
Test Date:2025-03-06	Remarks:

CU AND LUMINAIRE BUDGETARY ESTIMATE DIAGRAM

Test:U:24.00V I:0.4696A P:11.27W PF:1.000 Freq:0Hz		
Lamp Flux:155.451x1 lm		
NAME: SF15-24V-5050-70-SPI-RGBW(2700K)-G	TYPE:	WEIGHT:
SPEC.:	DIM.: Length=1m	SERIAL No.:
MFR.: OLYMPIA lighting	SUR.:	Shielding Angle:

pcc	80%			70%			50%			30%			10%			0
pw	50%	30%	10%	50%	30%	10%	50%	30%	10%	50%	30%	10%	50%	30%	10%	0
pfc	20%			20%			20%			20%			20%			0
RCR	RCR:Room Cavity Ratio															



C Range: 0 - 360DEG

C Interval: 30.0DEG

Test Speed: HIGH

Temperature:25.3℃

Operators:

Test Date:2025-03-06

γ Range: 0 - 180DEG

γ Interval: 1.0DEG

Test System:EVERFINE GO-2000B_V1 SYSTEM V2.00.488

Humidity:65.0%

Test Distance:6.360m [K=1.0000]

Remarks:

WEC AND CCEC

Test:U:24.00V I:0.4696A P:11.27W PF:1.000 Freq:0Hz Lamp Flux:155.451x1 lm		
NAME: SF15-24V-5050-70-SPI-RGBW(2700K)-G	TYPE:	WEIGHT:
SPEC.:	DIM.: Length=1m	SERIAL No.:
MFR.: OLympia lighting	SUR.:	Shielding Angle:

pcc	80%			70%			50%			30%			10%			0														
pw	50%	30%	10%	50%	30%	10%	50%	30%	10%	50%	30%	10%	50%	30%	10%	0														
pfc	20%			20%			20%			20%			20%			0														
RCR	RCR:Room Cavity Ratio															Wall Exitance Coefficients(WEC)														
0.0																														
1.0	.321	.183	.058	.313	.178	.057	.297	.171	.054	.283	.163	.052	.270	.156	.050															
2.0	.297	.163	.050	.290	.160	.049	.276	.154	.048	.263	.148	.046	.251	.142	.045															
3.0	.273	.145	.044	.267	.143	.043	.254	.138	.042	.243	.133	.041	.232	.128	.040															
4.0	.251	.130	.038	.245	.128	.038	.234	.124	.037	.224	.120	.036	.214	.116	.035															
5.0	.231	.118	.034	.226	.116	.034	.216	.113	.033	.207	.109	.032	.198	.106	.032															
6.0	.214	.107	.031	.209	.106	.030	.200	.103	.030	.192	.100	.029	.184	.097	.029															
7.0	.199	.098	.028	.195	.097	.028	.187	.094	.027	.179	.092	.027	.172	.089	.026															
8.0	.186	.091	.026	.182	.090	.025	.175	.087	.025	.168	.085	.025	.161	.083	.024															
9.0	.174	.084	.023	.170	.083	.023	.164	.081	.023	.158	.079	.023	.152	.077	.022															
10.0	.163	.078	.022	.160	.077	.022	.154	.076	.021	.149	.074	.021	.143	.072	.021															

pcc	80%			70%			50%			30%			10%			0
pw	50%	30%	10%	50%	30%	10%	50%	30%	10%	50%	30%	10%	50%	30%	10%	0
pfc	20%			20%			20%			20%			20%			0
RCR	RCR:Room Cavity Ratio						Ceiling Cavity Exitance Coefficients (CCEC)									
0.0	.222	.222	.222	.190	.190	.190	.129	.129	.129	.074	.074	.074	.024	.024	.024	
1.0	.213	.188	.165	.182	.161	.142	.125	.111	.098	.072	.064	.057	.023	.021	.018	
2.0	.205	.164	.129	.176	.141	.112	.120	.098	.078	.069	.057	.046	.022	.018	.015	
3.0	.197	.146	.106	.169	.126	.092	.116	.088	.064	.067	.051	.038	.022	.017	.012	
4.0	.190	.133	.090	.163	.115	.078	.112	.080	.055	.065	.047	.033	.021	.015	.011	
5.0	.182	.123	.079	.156	.106	.069	.108	.074	.049	.062	.044	.029	.020	.014	.010	
6.0	.175	.115	.072	.150	.099	.062	.104	.070	.044	.060	.041	.026	.019	.013	.009	
7.0	.168	.108	.066	.145	.094	.057	.100	.066	.041	.058	.039	.024	.019	.013	.008	
8.0	.162	.102	.061	.139	.089	.053	.096	.062	.038	.056	.037	.023	.018	.012	.007	
9.0	.155	.097	.058	.134	.084	.051	.093	.059	.036	.054	.035	.021	.018	.011	.007	
10.0	.150	.093	.055	.129	.081	.048	.090	.057	.034	.052	.034	.020	.017	.011	.007	

C Range: 0 - 360DEG
C Interval: 30.0DEG
Test Speed: HIGH
Temperature:25.3℃
Operators:
Test Date:2025-03-06

γ Range: 0 - 180DEG
γ Interval: 1.0DEG
Test System:EVERFINE GO-2000B_V1 SYSTEM V2.00.488
Humidity:65.0%
Test Distance:6.360m [K=1.0000]
Remarks:

UGR(Unified Glare Rating) Table

Test:U:24.00V I:0.4696A P:11.27W PF:1.000 Freq:0Hz Lamp Flux:155.451x1 lm											
NAME: SF15-24V-5050-70-SPI-RGBW(2700K)-G						TYPE:		WEIGHT:			
SPEC.:						DIM.: Length=1m		SERIAL No.:			
MFR.: OLympia lighting						SUR.:		Shielding Angle:			
ceiling/cavity	0.7	0.7	0.5	0.5	0.3	0.7	0.7	0.5	0.5	0.3	
walls	0.5	0.3	0.5	0.3	0.3	0.5	0.3	0.5	0.3	0.3	
working plane	0.2	0.2	0.2	0.2	0.2	0.2	0.2	0.2	0.2	0.2	
Room dimensions		Viewed crosswise					Viewed endwise				
x = 2H y = 2H	23.7	25.1	24.0	25.4	25.7	23.6	25.1	24.0	25.4	25.7	
	3H	25.2	26.6	25.6	26.9	27.2	25.2	26.6	25.6	26.9	27.2
	4H	25.9	27.2	26.3	27.6	27.9	25.9	27.2	26.3	27.5	27.9
	6H	26.5	27.7	26.9	28.0	28.4	26.5	27.7	26.9	28.0	28.4
	8H	26.7	27.9	27.1	28.2	28.6	26.7	27.9	27.1	28.2	28.6
	12H	26.8	28.0	27.3	28.3	28.7	26.8	28.0	27.3	28.3	28.7
4H	2H	24.3	25.6	24.6	25.9	26.2	24.3	25.6	24.6	25.9	26.2
	3H	26.1	27.2	26.5	27.6	28.0	26.1	27.2	26.5	27.6	28.0
	4H	26.9	27.9	27.3	28.3	28.7	26.9	27.9	27.3	28.3	28.7
	6H	27.6	28.5	28.0	28.9	29.4	27.6	28.5	28.0	28.9	29.4
	8H	27.8	28.7	28.3	29.1	29.6	27.9	28.7	28.3	29.2	29.6
	12H	28.1	28.9	28.6	29.3	29.8	28.1	28.9	28.6	29.3	29.8
8H	4H	27.2	28.0	27.7	28.5	29.0	27.2	28.0	27.7	28.5	29.0
	6H	28.1	28.8	28.6	29.3	29.8	28.1	28.8	28.6	29.3	29.8
	8H	28.4	29.1	29.0	29.6	30.1	28.5	29.1	29.0	29.6	30.1
	12H	28.8	29.3	29.3	29.8	30.4	28.8	29.3	29.3	29.8	30.4
12H	4H	27.2	28.0	27.7	28.5	29.0	27.2	28.0	27.7	28.5	29.0
	6H	28.1	28.8	28.7	29.3	29.8	28.2	28.8	28.7	29.3	29.8
	8H	28.6	29.1	29.1	29.6	30.2	28.6	29.1	29.1	29.7	30.2
Variations with the observer position at spacings(CIE Pub.117):											
S = 1.0H	+ 0.1 / - 0.2					+ 0.1 / - 0.2					
1.5H	+ 0.2 / - 0.3					+ 0.2 / - 0.3					
2.0H	+ 0.1 / - 0.3					+ 0.1 / - 0.3					

CIE Pub.117, 155.5 lm Total Lamp Luminous Flux Correct (8log(F/F0) = -6.5)
Area: 0.0115 m2

C Range: 0 - 360DEG
C Interval: 30.0DEG
Test Speed: HIGH
Temperature:25.3℃
Operators:
Test Date:2025-03-06

γ Range: 0 - 180DEG
γ Interval: 1.0DEG
Test System:EVERFINE GO-2000B_V1 SYSTEM V2.00.488
Humidity:65.0%
Test Distance:6.360m [K=1.0000]
Remarks:

UTILIZATION FACTORS TABLE

Test:U:24.00V I:0.4696A P:11.27W PF:1.000 Freq:0Hz Lamp Flux:155.451x1 lm		
NAME: SF15-24V-5050-70-SPI-RGBW(2700K)-G	TYPE:	WEIGHT:
SPEC.:	DIM.: Length=1m	SERIAL No.:
MFR.: OLympia lighting	SUR.:	Shielding Angle:

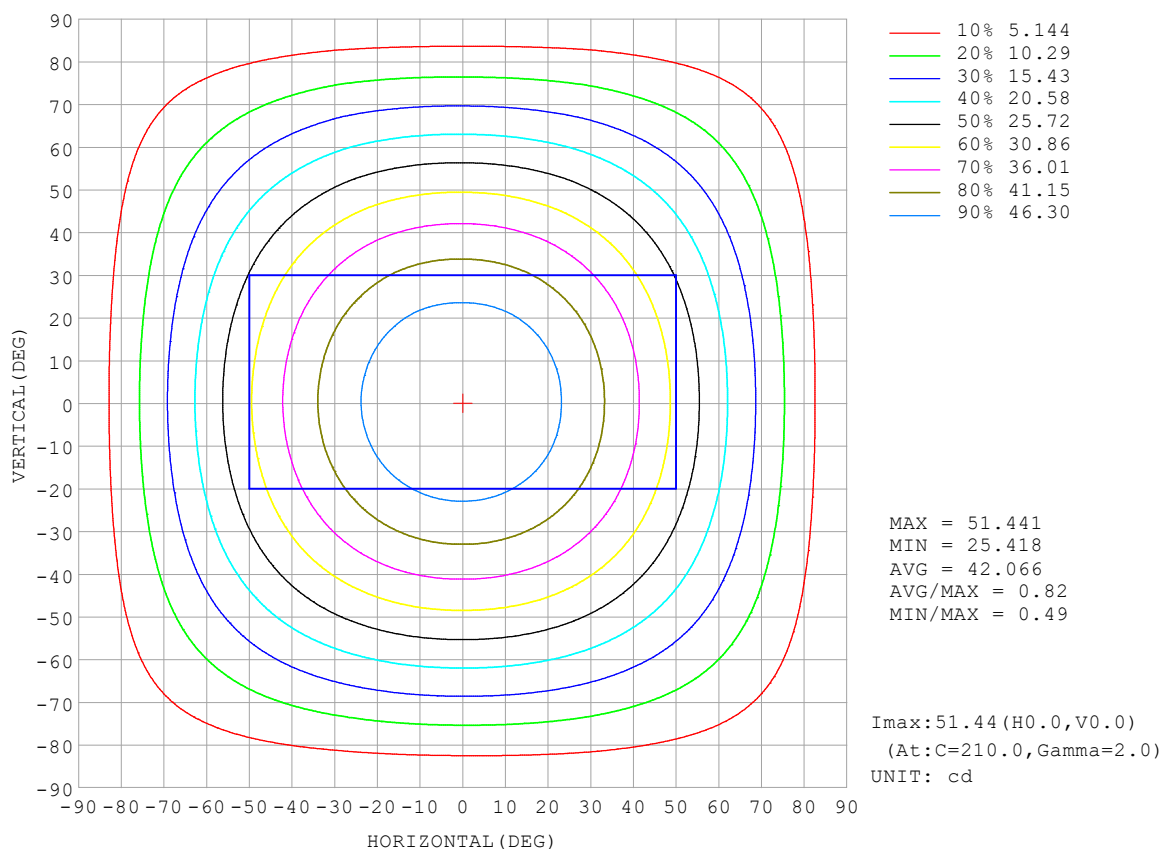
REFLECTANCE										
Ceiling	0.8	0.8	0.8	0.7	0.7	0.7	0.5	0.5	0.5	0
Walls	0.7	0.5	0.3	0.7	0.5	0.3	0.7	0.5	0.3	0
Working plane	0.2	0.2	0.2	0.2	0.2	0.2	0.2	0.2	0.2	0
ROOM INDEX	UTILIZATION FACTORS (PERCENT) $k(RI) \times RCR = 5$									
$k = 0.60$	56	44	37	55	44	37	54	43	37	30
0.80	66	54	46	65	53	46	62	52	46	39
1.00	74	63	55	73	62	55	70	63	54	46
1.25	81	70	63	79	69	62	76	68	61	53
1.50	86	76	69	84	75	68	81	73	67	58
2.00	93	84	77	91	83	76	87	80	74	66
2.50	97	89	82	95	87	81	90	84	79	70
3.00	100	93	87	98	91	86	93	88	83	74
4.00	104	98	93	102	96	92	97	92	89	78
5.00	107	102	97	104	100	96	99	95	92	81
ROOM INDEX	UF (total)									Direct
According to DIN EN 13032-2 2004			Suspended					SHRNOM = 1.25		

C Range: 0 - 360DEG
 C Interval: 30.0DEG
 Test Speed: HIGH
 Temperature: 25.3 °C
 Operators:
 Test Date: 2025-03-06

γ Range: 0 - 180DEG
 γ Interval: 1.0DEG
 Test System: EVERFINE GO-2000B_V1 SYSTEM V2.00.488
 Humidity: 65.0%
 Test Distance: 6.360m [K=1.0000]
 Remarks:

ISOCANDELA DIAGRAM

Test:U:24.00V I:0.4696A P:11.27W PF:1.000 Freq:0Hz Lamp Flux:155.45lx1 lm		
NAME: SF15-24V-5050-70-SPI-RGBW(2700K)-G	TYPE:	WEIGHT:
SPEC.:	DIM.: Length=1m	SERIAL No.:
MFR.: OLympia lighting	SUR.:	Shielding Angle:

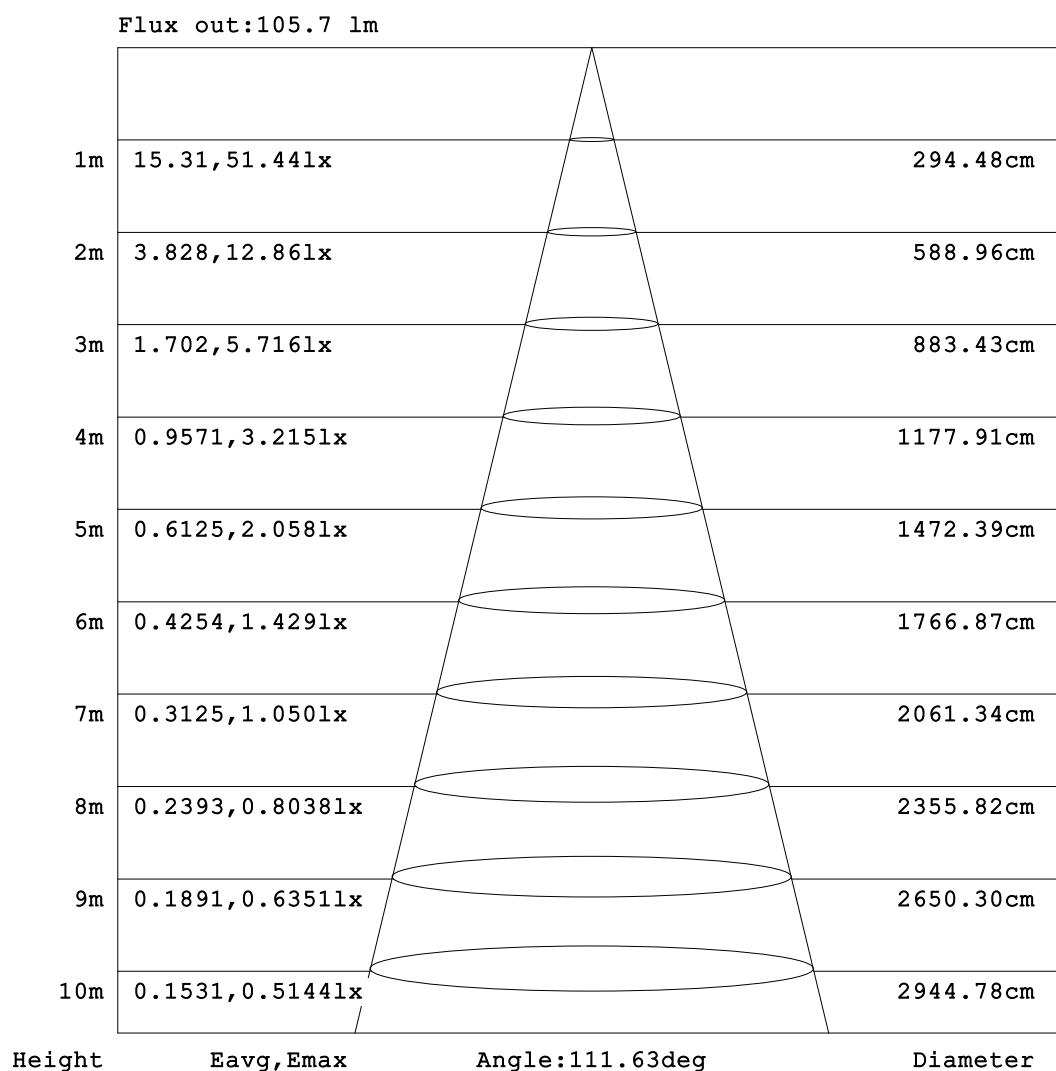


C Range: 0 - 360DEG
C Interval: 30.0DEG
Test Speed: HIGH
Temperature: 25.3°C
Operators:
Test Date: 2025-03-06

γ Range: 0 - 180DEG
γ Interval: 1.0DEG
Test System: EVERFINE GO-2000B_V1 SYSTEM V2.00.488
Humidity: 65.0%
Test Distance: 6.360m [K=1.0000]
Remarks:

AAI Figure

Test:U:24.00V I:0.4696A P:11.27W PF:1.000 Freq:0Hz Lamp Flux:155.451lx 1m		
NAME: SF15-24V-5050-70-SPI-RGBW(2700K)-G	TYPE:	WEIGHT:
SPEC.:	DIM.: Length=1m	SERIAL No.:
MFR.: OLympia lighting	SUR.:	Shielding Angle:



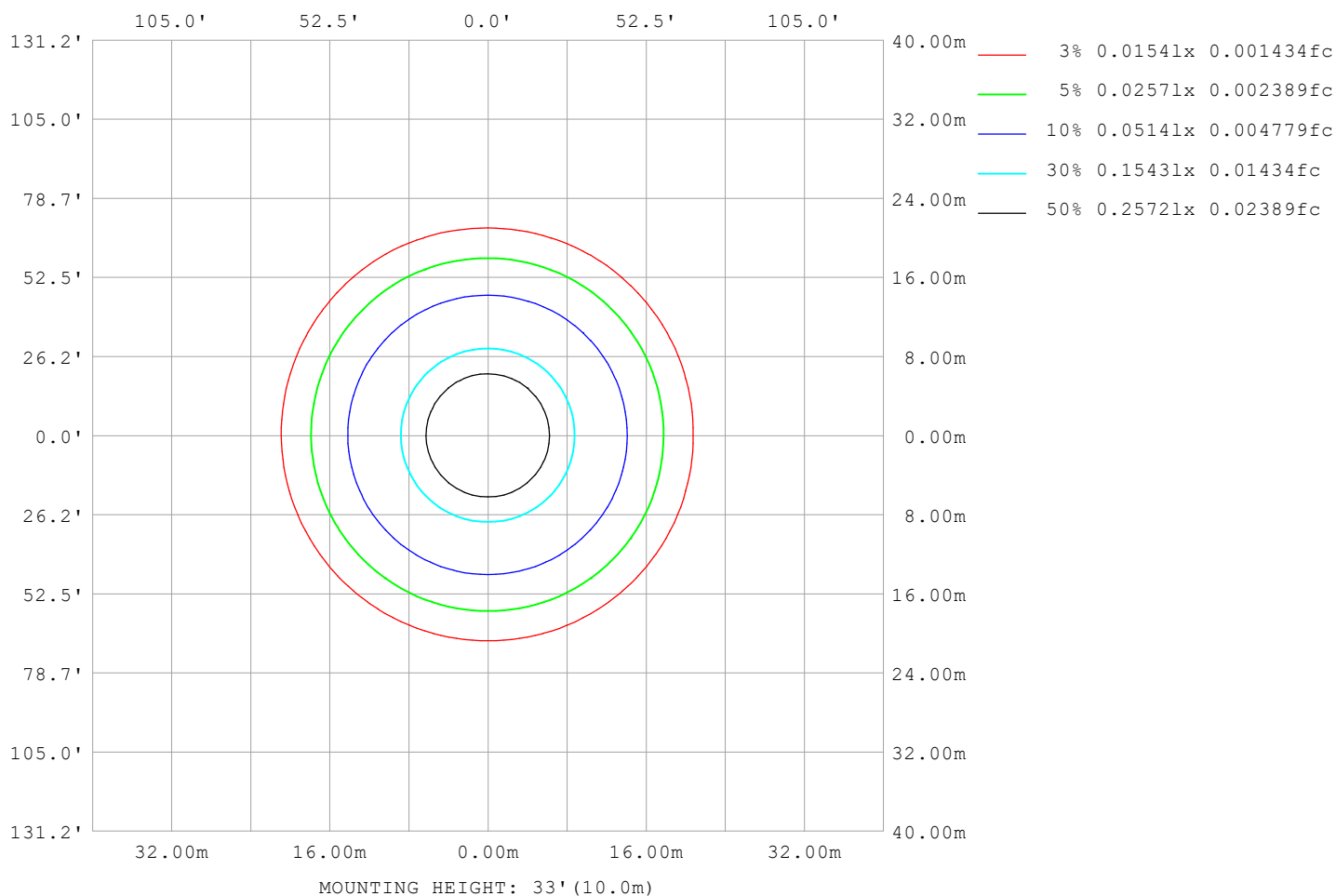
Note:The Curves indicate the illuminated area and the average illumination when the luminaire is at different distance.

C Range: 0 - 360DEG
C Interval: 30.0DEG
Test Speed: HIGH
Temperature:25.3℃
Operators:
Test Date:2025-03-06

γ Range: 0 - 180DEG
γ Interval: 1.0DEG
Test System:EVERFINE GO-2000B_V1 SYSTEM V2.00.488
Humidity:65.0%
Test Distance:6.360m [K=1.0000]
Remarks:

ISOLUX DIAGRAM

Test:U:24.00V I:0.4696A P:11.27W PF:1.000 Freq:0Hz Lamp Flux:155.45lx 1m		
NAME: SF15-24V-5050-70-SPI-RGBW(2700K)-G	TYPE:	WEIGHT:
SPEC.:	DIM.: Length=1m	SERIAL No.:
MFR.: OLympia lighting	SUR.:	Shielding Angle:



C Range: 0 - 360DEG
C Interval: 30.0DEG
Test Speed: HIGH
Temperature: 25.3°C
Operators:
Test Date: 2025-03-06

γ Range: 0 - 180DEG
γ Interval: 1.0DEG
Test System: EVERFINE GO-2000B_V1 SYSTEM V2.00.488
Humidity: 65.0%
Test Distance: 6.360m [K=1.0000]
Remarks:

LED Avg.L Report

Test:U:24.00V I:0.4696A P:11.27W PF:1.000 Freq:0Hz Lamp Flux:155.451x1 lm		
NAME: SF15-24V-5050-70-SPI-RGBW(2700K)-G	TYPE:	WEIGHT:
SPEC.:	DIM.: Length=1m	SERIAL No.:
MFR.: OLympia lighting	SUR.:	Shielding Angle:

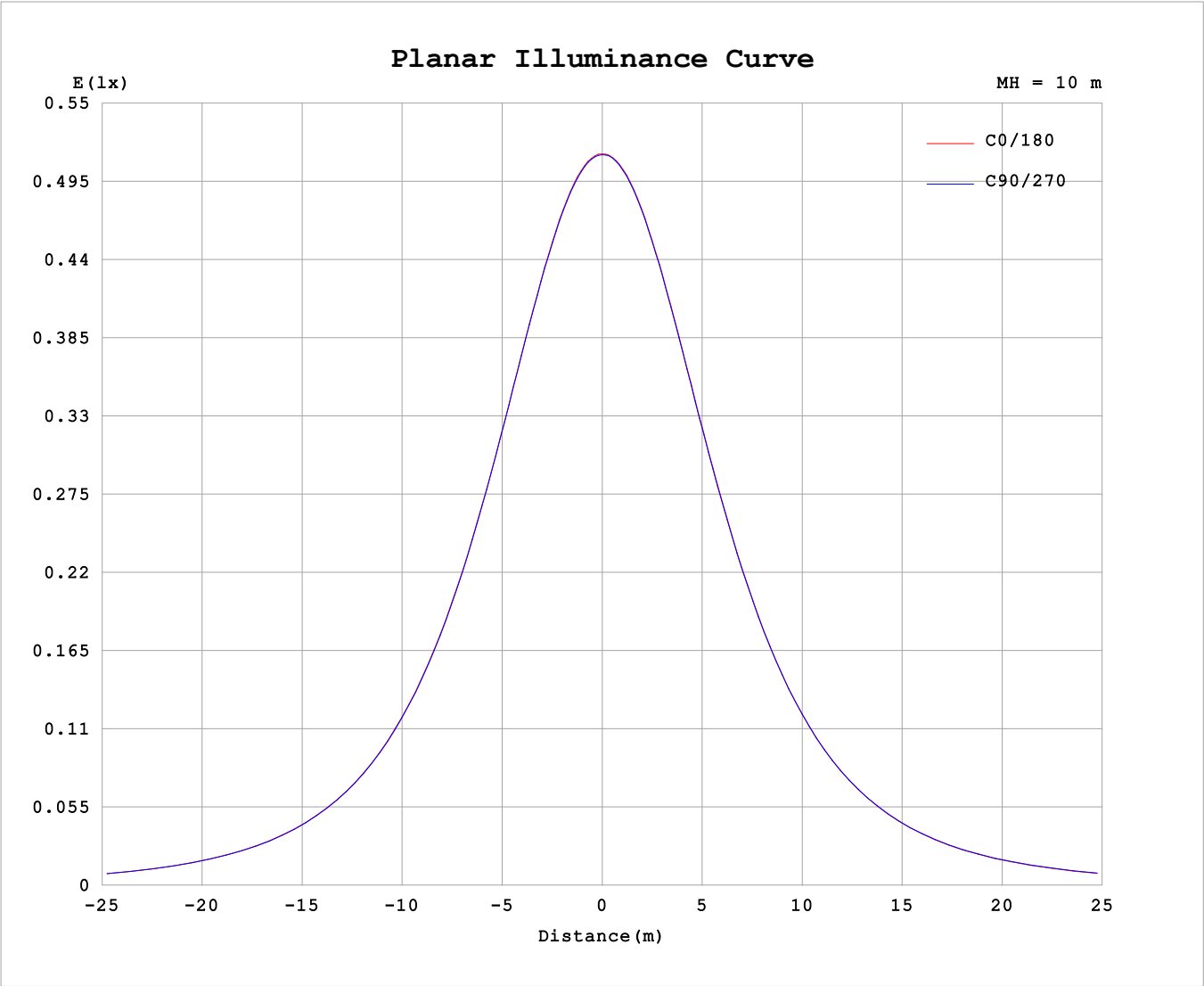
AvgL	cd/m2
L_0~180 (65) av	3808
L_0~180 (75) av	3596
L_0~180 (85) av	3735
L_90~270 (65) av	3834
L_90~270 (75) av	3684
L_90~270 (85) av	3810
L_45 (65) av	3848
L_45 (75) av	3683
L_45 (85) av	3851

Standard: GB/T 29293-2012

C Range: 0 - 360DEG
C Interval: 30.0DEG
Test Speed: HIGH
Temperature:25.3℃
Operators:
Test Date:2025-03-06

γ Range: 0 - 180DEG
γ Interval: 1.0DEG
Test System:EVERFINE GO-2000B_V1 SYSTEM V2.00.488
Humidity:65.0%
Test Distance:6.360m [K=1.0000]
Remarks:

Planar Illuminance Curve



C Range: 0 - 360DEG	γ Range: 0 - 180DEG
C Interval: 30.0DEG	γ Interval: 1.0DEG
Test Speed: HIGH	Test System:EVERFINE GO-2000B_V1 SYSTEM V2.00.488
Temperature:25.3℃	Humidity:65.0%
Operators:	Test Distance:6.360m [K=1.0000]
Test Date:2025-03-06	Remarks:

LUMINOUS DISTRIBUTION INTENSITY DATA

Test:U:24.00V I:0.4696A P:11.27W PF:1.000 Freq:0Hz Lamp Flux:155.451x1 lm																	
NAME: SF15-24V-5050-70-SPI-RGBW(2700K)-G									TYPE:						WEIGHT:		
SPEC.:									DIM.: Length=1m						SERIAL No.:		
MFR.: OLympia lighting									SUR.:						Shielding Angle:		

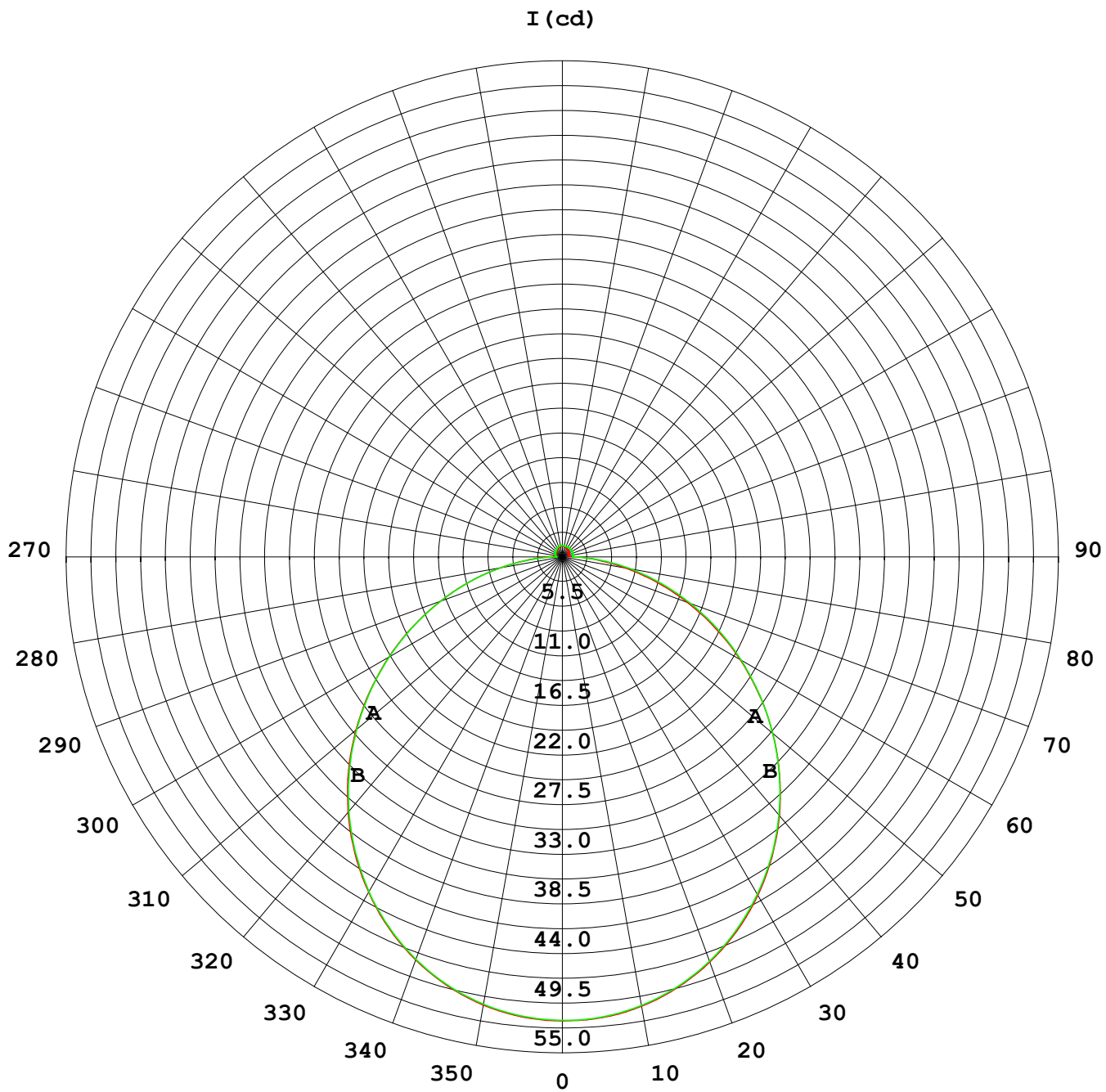
Table--1

UNIT: cd

C (DEG) γ (DEG)	0	30	60	90	120	150	180	210	240	270	300	330						
0	51.4	51.4	51.4	51.4	51.4	51.4	51.4	51.4	51.4	51.4	51.4	51.4						
5	51.2	51.2	51.2	51.1	51.2	51.2	51.2	51.2	51.2	51.2	51.2	51.2						
10	50.4	50.5	50.4	50.4	50.4	50.5	50.6	50.6	50.6	50.5	50.5	50.5						
15	49.2	49.3	49.2	49.2	49.2	49.3	49.4	49.4	49.4	49.4	49.4	49.3						
20	47.5	47.6	47.5	47.5	47.6	47.7	47.8	47.8	47.9	47.7	47.8	47.7						
25	45.4	45.5	45.4	45.4	45.5	45.6	45.7	45.8	45.9	45.7	45.7	45.6						
30	42.9	43.0	42.9	42.9	43.0	43.2	43.3	43.4	43.5	43.2	43.3	43.1						
35	40.1	40.1	40.1	40.0	40.2	40.3	40.5	40.6	40.7	40.5	40.5	40.3						
40	36.9	37.0	37.0	36.8	37.0	37.2	37.4	37.6	37.6	37.4	37.4	37.2						
45	33.5	33.6	33.5	33.4	33.6	33.8	34.0	34.2	34.3	34.0	34.0	33.8						
50	29.8	29.9	29.9	29.8	29.9	30.2	30.4	30.6	30.7	30.5	30.4	30.2						
55	26.0	26.1	26.1	26.0	26.1	26.4	26.7	26.9	27.0	26.7	26.7	26.4						
60	22.2	22.3	22.3	22.1	22.3	22.4	22.7	23.0	23.2	22.9	22.9	22.6						
65	18.3	18.4	18.4	18.2	18.3	18.5	18.7	19.0	19.3	19.0	19.0	18.7						
70	14.4	14.5	14.5	14.4	14.4	14.5	14.8	15.0	15.4	15.1	15.1	14.8						
75	10.6	10.7	10.7	10.6	10.5	10.6	10.8	11.1	11.5	11.3	11.4	11.0						
80	6.92	7.01	7.09	6.92	6.86	6.90	7.10	7.31	7.78	7.67	7.75	7.39						
85	3.62	3.67	3.64	3.45	3.39	3.63	3.86	4.00	4.21	4.19	4.29	3.97						
90	1.38	1.34	1.08	0.70	1.04	1.42	1.62	1.70	1.65	1.21	1.58	1.56						
95	0.93	0.90	0.87	0.73	0.77	0.89	0.93	1.07	1.17	1.16	1.16	1.01						
100	0.89	0.87	0.82	0.79	0.74	0.77	0.76	0.92	1.13	1.18	1.13	0.97						
105	0.88	0.85	0.81	0.83	0.79	0.78	0.68	0.85	1.16	1.21	1.15	0.94						
110	0.86	0.85	0.83	0.88	0.84	0.82	0.72	0.87	1.19	1.23	1.16	0.93						
115	0.85	0.87	0.86	0.92	0.88	0.87	0.76	0.90	1.20	1.24	1.17	0.92						
120	0.87	0.89	0.89	0.95	0.92	0.90	0.80	0.93	1.20	1.24	1.17	0.92						
125	0.90	0.91	0.92	0.99	0.96	0.94	0.83	0.96	1.21	1.24	1.17	0.95						
130	0.94	0.94	0.97	1.03	1.00	0.98	0.88	0.98	1.22	1.24	1.17	0.98						
135	0.96	0.98	1.02	1.06	1.04	1.02	0.93	1.01	1.22	1.24	1.18	0.99						
140	0.99	1.02	1.05	1.10	1.08	1.06	0.96	1.04	1.22	1.24	1.18	1.02						
145	1.02	1.07	1.09	1.14	1.11	1.11	1.01	1.06	1.22	1.24	1.20	1.04						
150	1.07	1.10	1.12	1.18	1.15	1.14	1.05	1.09	1.23	1.24	1.20	1.07						
155	1.11	1.14	1.16	1.21	1.18	1.17	1.09	1.12	1.23	1.24	1.22	1.10						
160	1.14	1.17	1.19	1.24	1.20	1.21	1.14	1.15	1.24	1.24	1.23	1.13						
165	1.18	1.20	1.22	1.25	1.22	1.23	1.18	1.19	1.24	1.24	1.24	1.16						
170	1.20	1.24	1.23	1.26	1.24	1.26	1.21	1.21	1.26	1.24	1.25	1.21						
175	1.23	1.25	1.24	1.26	1.25	1.26	1.23	1.23	1.26	1.26	1.26	1.23						
180	1.23	1.25	1.26	1.26	1.26	1.26	1.23	1.24	1.26	1.26	1.26	1.25						

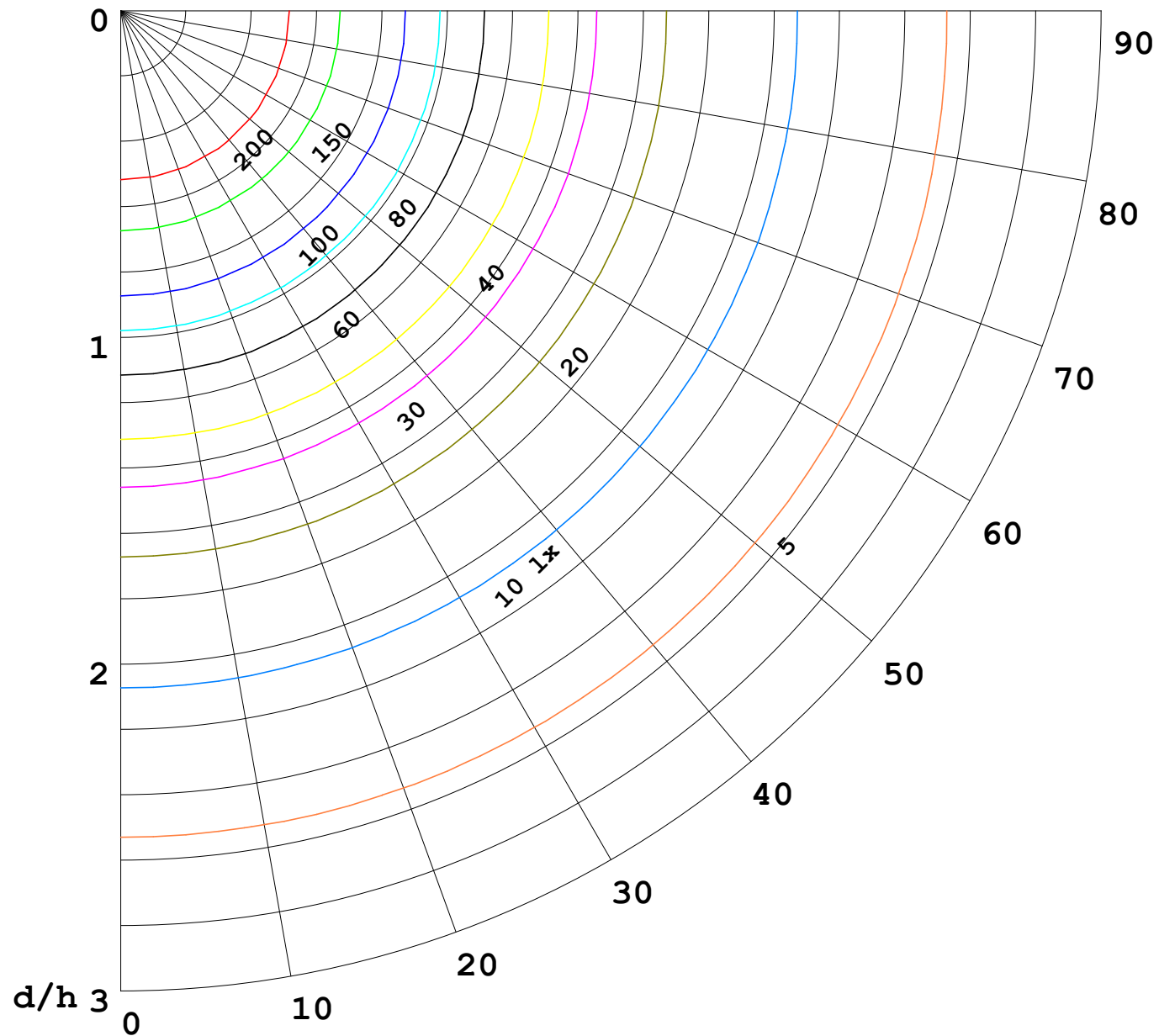
C Range: 0 - 360DEG
C Interval: 30.0DEG
Test Speed: HIGH
Temperature:25.3℃
Operators:
Test Date:2025-03-06

γ Range: 0 - 180DEG
γ Interval: 1.0DEG
Test System:EVERFINE GO-2000B_V1 SYSTEM V2.00.488
Humidity:65.0%
Test Distance:6.360m [K=1.0000]
Remarks:



1000 lm

$\kappa = 1$



F = 1000 lm
 K = 0.7
 Hcc = 0.8 m
 Hfc = 0.0 m
 Eave = 100 lx

	Pcc	Pw	Pfc
————	70	50	30
————	50	30	20

