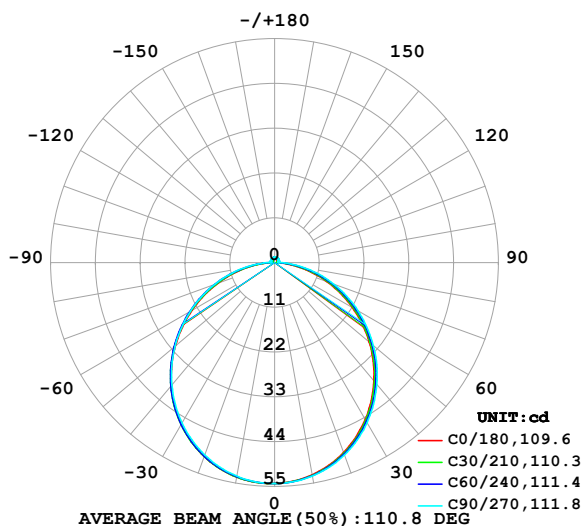


LUMINAIRE PHOTOMETRIC TEST REPORT

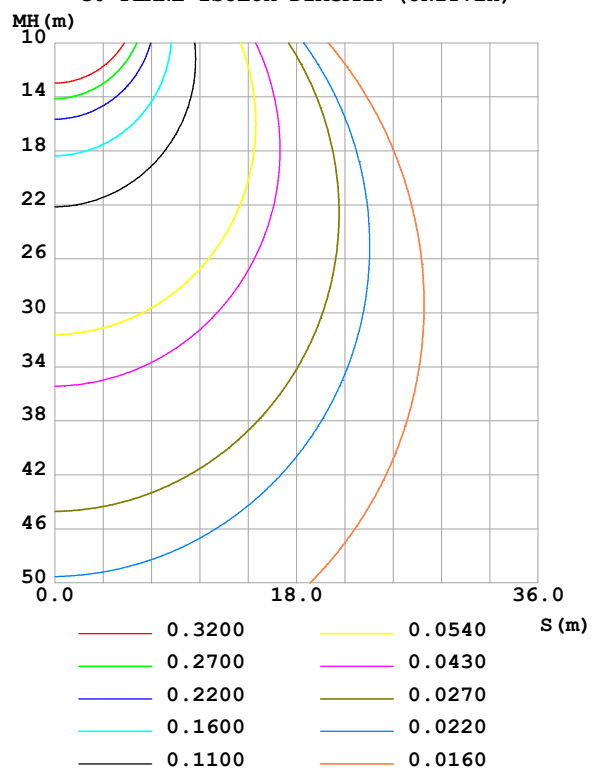
Test:U:24.00V I:0.2349A P:5.638W PF:1.000 Freq:0Hz Lamp Flux:160.497x1 lm		
NAME: SF15-24V-5050-70-SPI-RGBW(4000K)-W	TYPE:	WEIGHT:
SPEC.:	DIM.: Length=1m	SERIAL No.:
MFR.: Olym pia lighting	SUR.:	Shielding Angle:

DATA OF LAMP		PHOTOMETRIC DATA Eff: 28.47 lm/W			
MODEL	5050	Imax (cd)	54.28	S/MH(C0/180)	1.26
NOMINAL POWER(W)		LOR(%)	100.0	S/MH(C90/270)	1.25
RATED VOLTAGE(V)	24	TOTAL FLUX(lm)	160.50	η UP,DN(C0-180)	2.0,47.7
NOMINAL FLUX(lm)	160.497	CIE CLASS	DIRECT	η UP,DN(C180-360)	2.0,48.3
LAMPS INSIDE	1	η up (%)	3.9	CIBSE SHR NOM	1.25
TEST VOLTAGE(V)		η down (%)	96.1	CIBSE SHR MAX	1.35

LUMINOUS INTENSITY DISTRIBUTION DIAGRAM



C0 PLANE ISOLUX DIAGRAM (UNIT:lx)



C Range: 0 - 360DEG
C Interval: 30.0DEG
Test Speed: HIGH
Temperature:25.3℃
Operators:
Test Date:2025-03-06

γ Range: 0 - 180DEG
 γ Interval: 1.0DEG
Test System:EVERFINE GO-2000B_V1 SYSTEM V2.00.488
Humidity:65.0%
Test Distance:6.360m [K=1.0000]
Remarks:

ZONAL FLUX DIAGRAM

ZONAL FLUX DIAGRAM:

γ	C0	C45	C90	C135	C180	C225	C270	C315	γ	Φ zone	Φ total	%lum, lamp
10	52.95	53.12	53.25	53.46	53.52	53.47	53.28	53.11	0- 10	5.134	5.134	3.2,3.2
20	49.61	49.93	50.27	50.61	50.66	50.64	50.29	49.96	10- 20	14.67	19.81	12.3,12.3
30	44.52	44.93	45.43	45.87	45.88	45.95	45.51	45.00	20- 30	22.14	41.94	26.1,26.1
40	37.98	38.46	39.08	39.55	39.46	39.68	39.28	38.58	30- 40	26.51	68.45	42.6,42.6
50	30.34	30.93	31.67	32.02	31.83	32.19	31.92	31.08	40- 50	27.29	95.74	59.7,59.7
60	22.06	22.77	23.65	23.70	23.43	23.91	23.91	22.94	50- 60	24.55	120.3	75,75
70	13.58	14.42	15.43	15.15	14.78	15.35	15.68	14.60	60- 70	18.90	139.2	86.7,86.7
80	5.522	6.444	7.498	6.957	6.544	7.169	7.732	6.583	70- 80	11.37	150.6	93.8,93.8
90	0.5892	0.7514	0.9167	0.7621	0.5601	0.8189	1.024	0.8064	80- 90	3.628	154.2	96.1,96.1
100	0.6499	0.7882	0.9802	0.8276	0.6327	0.8548	1.058	0.8521	90-100	0.8686	155.1	96.6,96.6
110	0.7631	0.8677	1.035	0.9239	0.7284	0.9415	1.121	0.9440	100-110	0.9234	156.0	97.2,97.2
120	0.8734	0.9676	1.090	1.014	0.8242	1.009	1.145	0.9972	110-120	0.9475	156.9	97.8,97.8
130	0.9952	1.078	1.153	1.086	0.9142	1.069	1.173	1.061	120-130	0.9255	157.9	98.4,98.4
140	1.079	1.151	1.217	1.160	1.004	1.125	1.202	1.096	130-140	0.8503	158.7	98.9,98.9
150	1.146	1.215	1.283	1.223	1.103	1.185	1.245	1.157	140-150	0.7292	159.4	99.3,99.3
160	1.233	1.274	1.332	1.280	1.199	1.252	1.282	1.231	150-160	0.5676	160.0	99.7,99.7
170	1.285	1.325	1.350	1.331	1.277	1.306	1.317	1.303	160-170	0.3642	160.4	99.9,99.9
180	1.317	1.336	1.352	1.345	1.309	1.339	1.352	1.343	170-180	0.1264	160.5	100,100
DEG	LUMINOUS INTENSITY:cd									UNIT:lm		

Conical surface Flux(90deg): 82.228 lm

%lum = 51.2%

%lamp = 51.2%

Conical surface Flux(130deg): 130.6 lm

%lum = 81.4%

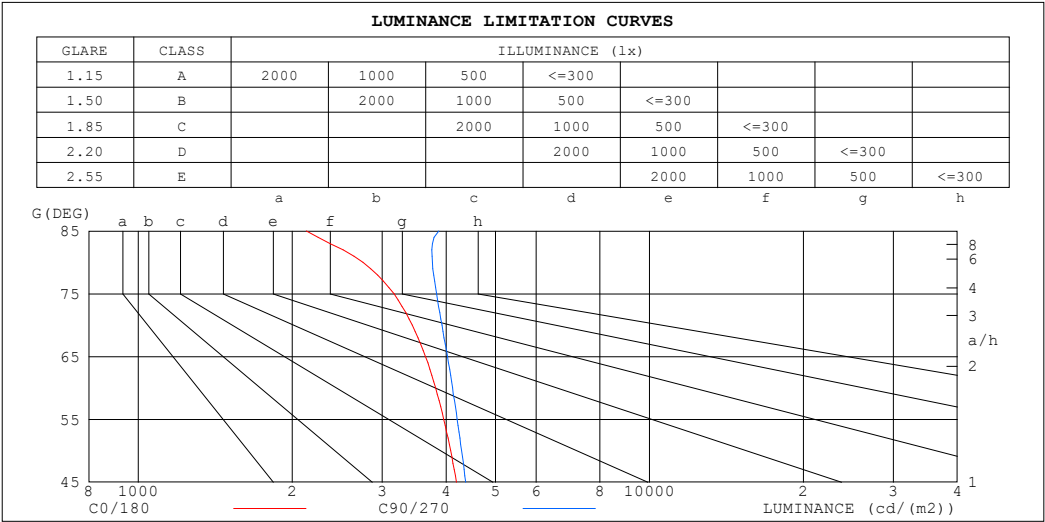
%lamp = 81.4%

C Range: 0 - 360DEG
 C Interval: 30.0DEG
 Test Speed: HIGH
 Temperature:25.3℃
 Operators:
 Test Date:2025-03-06

γ Range: 0 - 180DEG
 γ Interval: 1.0DEG
 Test System:EVERFINE GO-2000B_V1 SYSTEM V2.00.488
 Humidity:65.0%
 Test Distance:6.360m [K=1.0000]
 Remarks:

LUMINANCE LIMITATION CURVES

Test:U:24.00V I:0.2349A P:5.638W PF:1.000 Freq:0Hz Lamp Flux:160.497x1 lm		
NAME: SF15-24V-5050-70-SPI-RGBW(4000K)-W	TYPE:	WEIGHT:
SPEC.:	DIM.: Length=1m	SERIAL No.:
MFR.: OLympia lighting	SUR.:	Shielding Angle:



LUMINANCE cd/(m2)		
G (DEG)	C0/180	C90/270
85	2132	3872
80	2750	3759
75	3161	3833
70	3435	3927
65	3645	4024
60	3816	4118
55	3958	4206
50	4082	4290
45	4190	4367

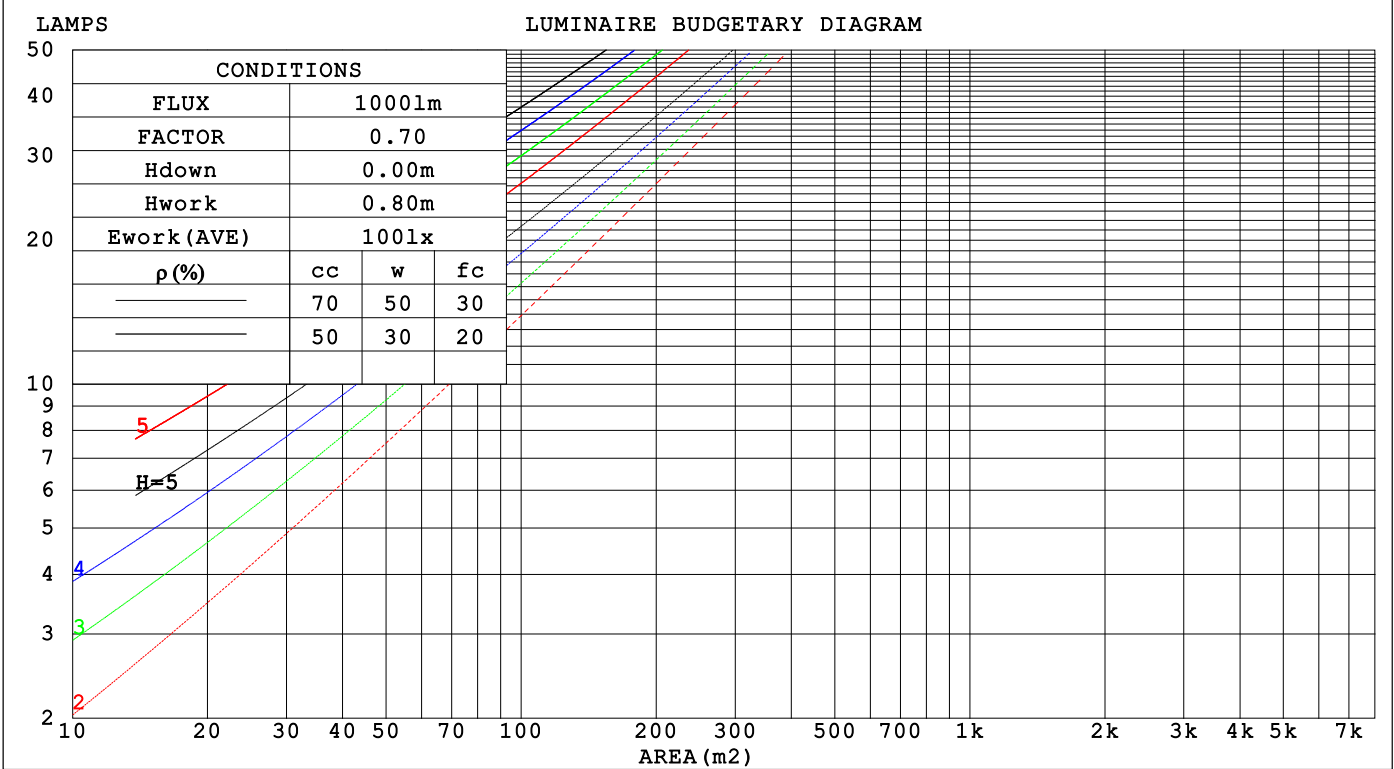
C Range: 0 - 360DEG
C Interval: 30.0DEG
Test Speed: HIGH
Temperature:25.3℃
Operators:
Test Date:2025-03-06

γ Range: 0 - 180DEG
γ Interval: 1.0DEG
Test System:EVERFINE GO-2000B_V1 SYSTEM V2.00.488
Humidity:65.0%
Test Distance:6.360m [K=1.0000]
Remarks:

CU AND LUMINAIRE BUDGETARY ESTIMATE DIAGRAM

Test:U:24.00V I:0.2349A P:5.638W PF:1.000 Freq:0Hz		
Lamp Flux:160.497x1 lm		
NAME: SF15-24V-5050-70-SPI-RGBW(4000K)-W	TYPE:	WEIGHT:
SPEC.:	DIM.: Length=1m	SERIAL No.:
MFR.: OLYMPIA lighting	SUR.:	Shielding Angle:

pcc	80%			70%			50%			30%			10%			0
pw	50%	30%	10%	50%	30%	10%	50%	30%	10%	50%	30%	10%	50%	30%	10%	0
pfc	20%			20%			20%			20%			20%			0
RCR	RCR:Room Cavity Ratio															



C Range: 0 - 360DEG

C Interval: 30.0DEG

Test Speed: HIGH

Temperature:25.3℃

Operators:

Test Date:2025-03-06

γ Range: 0 - 180DEG

γ Interval: 1.0DEG

Test System:EVERFINE GO-2000B_V1 SYSTEM V2.00.488

Humidity:65.0%

Test Distance:6.360m [K=1.0000]

Remarks:

WEC AND CCEC

Test:U:24.00V I:0.2349A P:5.638W PF:1.000 Freq:0Hz Lamp Flux:160.497x1 lm		
NAME: SF15-24V-5050-70-SPI-RGBW(4000K)-W	TYPE:	WEIGHT:
SPEC.:	DIM.: Length=1m	SERIAL No.:
MFR.: OLympia lighting	SUR.:	Shielding Angle:

pcc	80%			70%			50%			30%			10%			0														
pw	50%	30%	10%	50%	30%	10%	50%	30%	10%	50%	30%	10%	50%	30%	10%	0														
pfc	20%			20%			20%			20%			20%			0														
RCR	RCR:Room Cavity Ratio															Wall Exitance Coefficients(WEC)														
0.0																														
1.0	.314	.178	.057	.305	.174	.055	.290	.166	.053	.276	.159	.051	.263	.152	.049															
2.0	.293	.160	.049	.286	.157	.048	.272	.151	.047	.259	.145	.045	.247	.140	.044															
3.0	.270	.144	.043	.264	.141	.042	.251	.136	.041	.240	.131	.040	.229	.127	.039															
4.0	.249	.129	.038	.243	.127	.038	.232	.123	.037	.222	.119	.036	.212	.115	.035															
5.0	.230	.117	.034	.224	.115	.034	.215	.112	.033	.205	.108	.032	.197	.105	.032															
6.0	.213	.107	.031	.208	.105	.030	.199	.102	.030	.191	.099	.029	.183	.097	.029															
7.0	.198	.098	.028	.194	.097	.028	.186	.094	.027	.178	.091	.027	.171	.089	.026															
8.0	.185	.090	.025	.181	.089	.025	.174	.087	.025	.167	.085	.024	.161	.083	.024															
9.0	.173	.084	.023	.170	.083	.023	.163	.081	.023	.157	.079	.023	.151	.077	.022															
10.0	.163	.078	.022	.160	.077	.022	.154	.075	.021	.148	.074	.021	.143	.072	.021															

pcc	80%			70%			50%			30%			10%			0
pw	50%	30%	10%	50%	30%	10%	50%	30%	10%	50%	30%	10%	50%	30%	10%	0
pfc	20%			20%			20%			20%			20%			0
RCR	RCR:Room Cavity Ratio						Ceiling Cavity Exitance Coefficients (CCEC)									
0.0	.220	.220	.220	.188	.188	.188	.129	.129	.129	.074	.074	.074	.024	.024	.024	
1.0	.211	.186	.164	.180	.160	.141	.123	.110	.098	.071	.064	.057	.023	.020	.018	
2.0	.203	.162	.128	.174	.140	.111	.119	.097	.077	.069	.056	.045	.022	.018	.015	
3.0	.195	.145	.105	.167	.125	.091	.115	.087	.064	.066	.051	.038	.021	.016	.012	
4.0	.187	.132	.089	.161	.114	.077	.111	.079	.054	.064	.046	.032	.021	.015	.011	
5.0	.180	.121	.078	.155	.105	.068	.106	.073	.048	.062	.043	.028	.020	.014	.009	
6.0	.173	.113	.070	.149	.098	.061	.102	.069	.043	.059	.040	.026	.019	.013	.008	
7.0	.166	.106	.064	.143	.092	.056	.099	.065	.040	.057	.038	.024	.019	.012	.008	
8.0	.160	.100	.060	.137	.087	.052	.095	.061	.037	.055	.036	.022	.018	.012	.007	
9.0	.154	.096	.056	.132	.083	.049	.092	.058	.035	.053	.034	.021	.017	.011	.007	
10.0	.148	.091	.054	.127	.079	.047	.088	.056	.033	.052	.033	.020	.017	.011	.007	

C Range: 0 - 360DEG
C Interval: 30.0DEG
Test Speed: HIGH
Temperature:25.3℃
Operators:
Test Date:2025-03-06

γ Range: 0 - 180DEG
γ Interval: 1.0DEG
Test System:EVERFINE GO-2000B_V1 SYSTEM V2.00.488
Humidity:65.0%
Test Distance:6.360m [K=1.0000]
Remarks:

UGR(Unified Glare Rating) Table

Test:U:24.00V I:0.2349A P:5.638W PF:1.000 Freq:0Hz Lamp Flux:160.497x1 lm											
NAME: SF15-24V-5050-70-SPI-RGBW(4000K)-W					TYPE:			WEIGHT:			
SPEC.:					DIM.: Length=1m			SERIAL No.:			
MFR.: OLympia lighting					SUR.:			Shielding Angle:			
ceiling/cavity	0.7	0.7	0.5	0.5	0.3	0.7	0.7	0.5	0.5	0.3	
walls	0.5	0.3	0.5	0.3	0.3	0.5	0.3	0.5	0.3	0.3	
working plane	0.2	0.2	0.2	0.2	0.2	0.2	0.2	0.2	0.2	0.2	
Room dimensions		Viewed crosswise					Viewed endwise				
x = 2H y = 2H	2H	23.5	25.0	23.8	25.2	25.5	23.8	25.2	24.1	25.5	25.8
	3H	24.9	26.3	25.3	26.6	26.9	25.4	26.7	25.7	27.0	27.4
	4H	25.5	26.8	25.9	27.1	27.5	26.1	27.4	26.5	27.7	28.0
	6H	25.9	27.1	26.3	27.5	27.8	26.6	27.9	27.0	28.2	28.6
	8H	26.0	27.2	26.4	27.5	27.9	26.9	28.0	27.3	28.4	28.8
	12H	26.1	27.2	26.5	27.6	27.9	27.0	28.1	27.4	28.5	28.9
4H	2H	24.1	25.4	24.5	25.7	26.1	24.3	25.6	24.7	25.9	26.3
	3H	25.8	26.9	26.2	27.2	27.6	26.1	27.3	26.5	27.6	28.0
	4H	26.5	27.5	26.9	27.9	28.3	27.0	28.0	27.4	28.4	28.8
	6H	27.0	27.9	27.4	28.3	28.8	27.7	28.6	28.1	29.0	29.4
	8H	27.1	28.0	27.6	28.4	28.9	27.9	28.8	28.4	29.2	29.7
	12H	27.2	28.0	27.7	28.5	28.9	28.2	28.9	28.7	29.4	29.9
8H	4H	26.8	27.6	27.2	28.0	28.5	27.2	28.1	27.7	28.5	29.0
	6H	27.4	28.1	27.9	28.6	29.1	28.1	28.8	28.6	29.3	29.8
	8H	27.7	28.3	28.2	28.8	29.3	28.4	29.1	29.0	29.6	30.1
	12H	27.8	28.4	28.4	28.9	29.4	28.8	29.3	29.3	29.8	30.4
12H	4H	26.8	27.6	27.3	28.0	28.5	27.2	28.0	27.7	28.4	28.9
	6H	27.5	28.1	28.0	28.6	29.2	28.1	28.7	28.6	29.2	29.8
	8H	27.8	28.3	28.3	28.8	29.4	28.5	29.1	29.1	29.6	30.2
Variations with the observer position at spacings(CIE Pub.117):											
S = 1.0H		+ 0.2 / - 0.2					+ 0.1 / - 0.2				
1.5H		+ 0.2 / - 0.3					+ 0.2 / - 0.3				
2.0H		+ 0.2 / - 0.3					+ 0.1 / - 0.2				

CIE Pub.117, 160.5 lm Total Lamp Luminous Flux Correct (8log(F/F0) = -6.4)
Area: 0.0115 m2

C Range: 0 - 360DEG
C Interval: 30.0DEG
Test Speed: HIGH
Temperature:25.3℃
Operators:
Test Date:2025-03-06

γ Range: 0 - 180DEG
γ Interval: 1.0DEG
Test System:EVERFINE GO-2000B_V1 SYSTEM V2.00.488
Humidity:65.0%
Test Distance:6.360m [K=1.0000]
Remarks:

UTILIZATION FACTORS TABLE

Test:U:24.00V I:0.2349A P:5.638W PF:1.000 Freq:0Hz Lamp Flux:160.497x1 lm		
NAME: SF15-24V-5050-70-SPI-RGBW(4000K)-W	TYPE:	WEIGHT:
SPEC.:	DIM.: Length=1m	SERIAL No.:
MFR.: OLympia lighting	SUR.:	Shielding Angle:

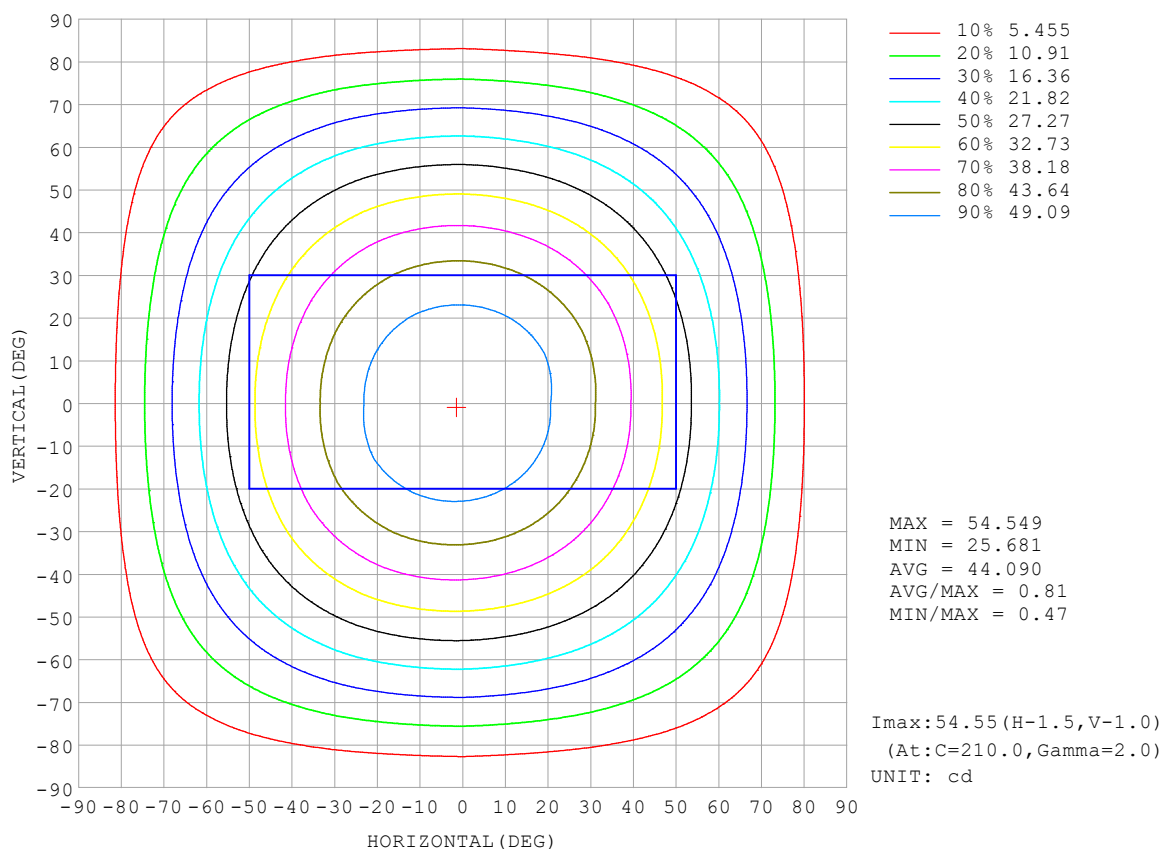
REFLECTANCE										
Ceiling	0.8	0.8	0.8	0.7	0.7	0.7	0.5	0.5	0.5	0
Walls	0.7	0.5	0.3	0.7	0.5	0.3	0.7	0.5	0.3	0
Working plane	0.2	0.2	0.2	0.2	0.2	0.2	0.2	0.2	0.2	0
ROOM INDEX	UTILIZATION FACTORS (PERCENT) $k(RI) \times RCR = 5$									
$k = 0.60$	56	45	38	55	44	38	54	44	37	31
0.80	66	55	47	65	54	47	63	53	46	39
1.00	75	63	56	73	63	56	71	64	55	47
1.25	82	71	64	80	70	63	77	68	62	54
1.50	87	76	69	85	75	69	81	73	67	59
2.00	93	85	78	91	83	77	87	81	75	67
2.50	97	89	83	95	88	82	91	85	80	71
3.00	101	94	88	98	92	87	94	88	84	75
4.00	105	99	94	102	97	92	97	93	89	79
5.00	107	102	98	105	100	96	99	96	93	82
ROOM INDEX	UF (total)									Direct
According to DIN EN 13032-2 2004			Suspended					SHRNOM = 1.25		

C Range: 0 - 360DEG
 C Interval: 30.0DEG
 Test Speed: HIGH
 Temperature: 25.3 °C
 Operators:
 Test Date: 2025-03-06

γ Range: 0 - 180DEG
 γ Interval: 1.0DEG
 Test System: EVERFINE GO-2000B_V1 SYSTEM V2.00.488
 Humidity: 65.0%
 Test Distance: 6.360m [K=1.0000]
 Remarks:

ISOCANDELA DIAGRAM

Test:U:24.00V I:0.2349A P:5.638W PF:1.000 Freq:0Hz Lamp Flux:160.497x1 lm		
NAME: SF15-24V-5050-70-SPI-RGBW(4000K)-W	TYPE:	WEIGHT:
SPEC.:	DIM.: Length=1m	SERIAL No.:
MFR.: OLympia lighting	SUR.:	Shielding Angle:

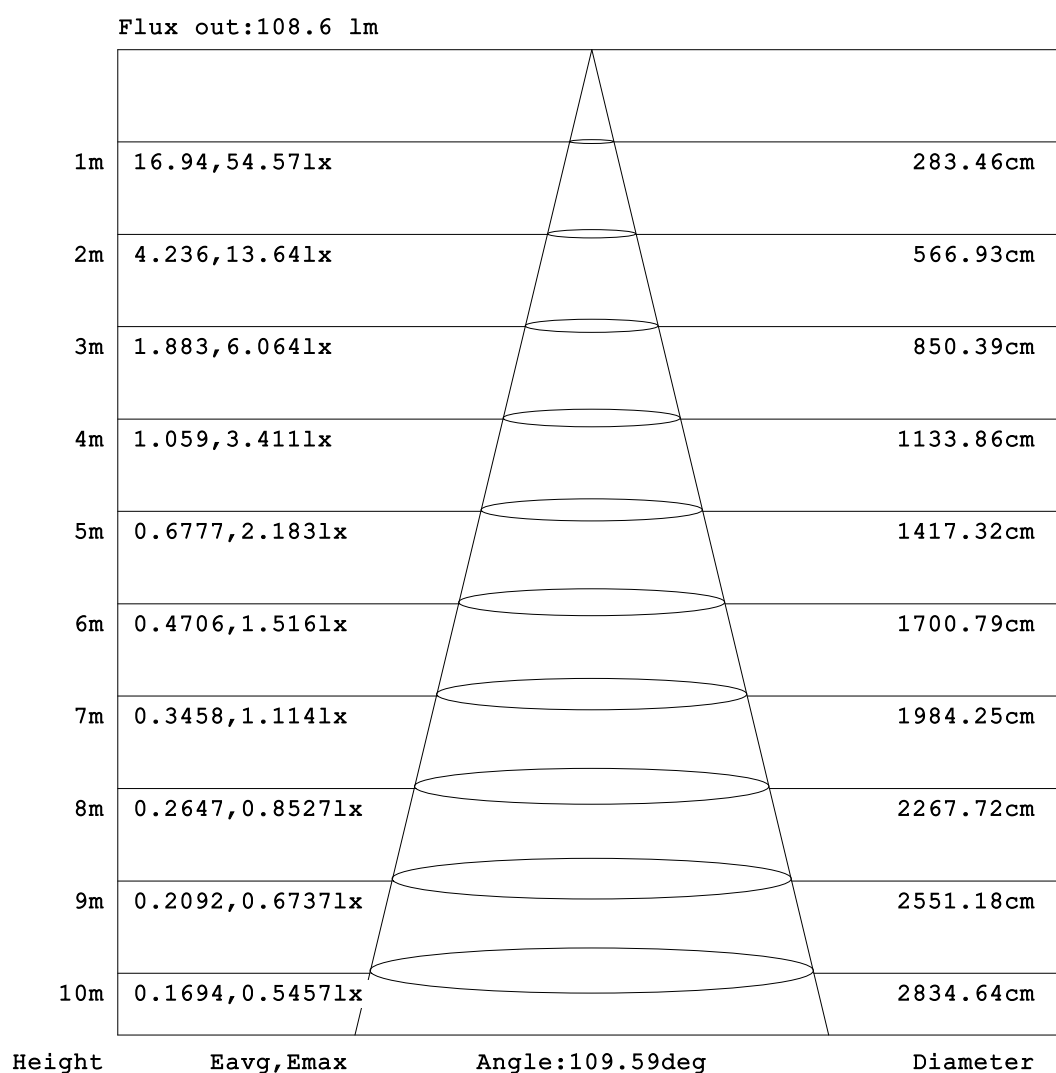


C Range: 0 - 360DEG
C Interval: 30.0DEG
Test Speed: HIGH
Temperature:25.3℃
Operators:
Test Date:2025-03-06

γ Range: 0 - 180DEG
γ Interval: 1.0DEG
Test System:EVERFINE GO-2000B_V1 SYSTEM V2.00.488
Humidity:65.0%
Test Distance:6.360m [K=1.0000]
Remarks:

AAI Figure

Test:U:24.00V I:0.2349A P:5.638W PF:1.000 Freq:0Hz Lamp Flux:160.497x1 lm		
NAME: SF15-24V-5050-70-SPI-RGBW(4000K)-W	TYPE:	WEIGHT:
SPEC.:	DIM.: Length=1m	SERIAL No.:
MFR.: OLympia lighting	SUR.:	Shielding Angle:



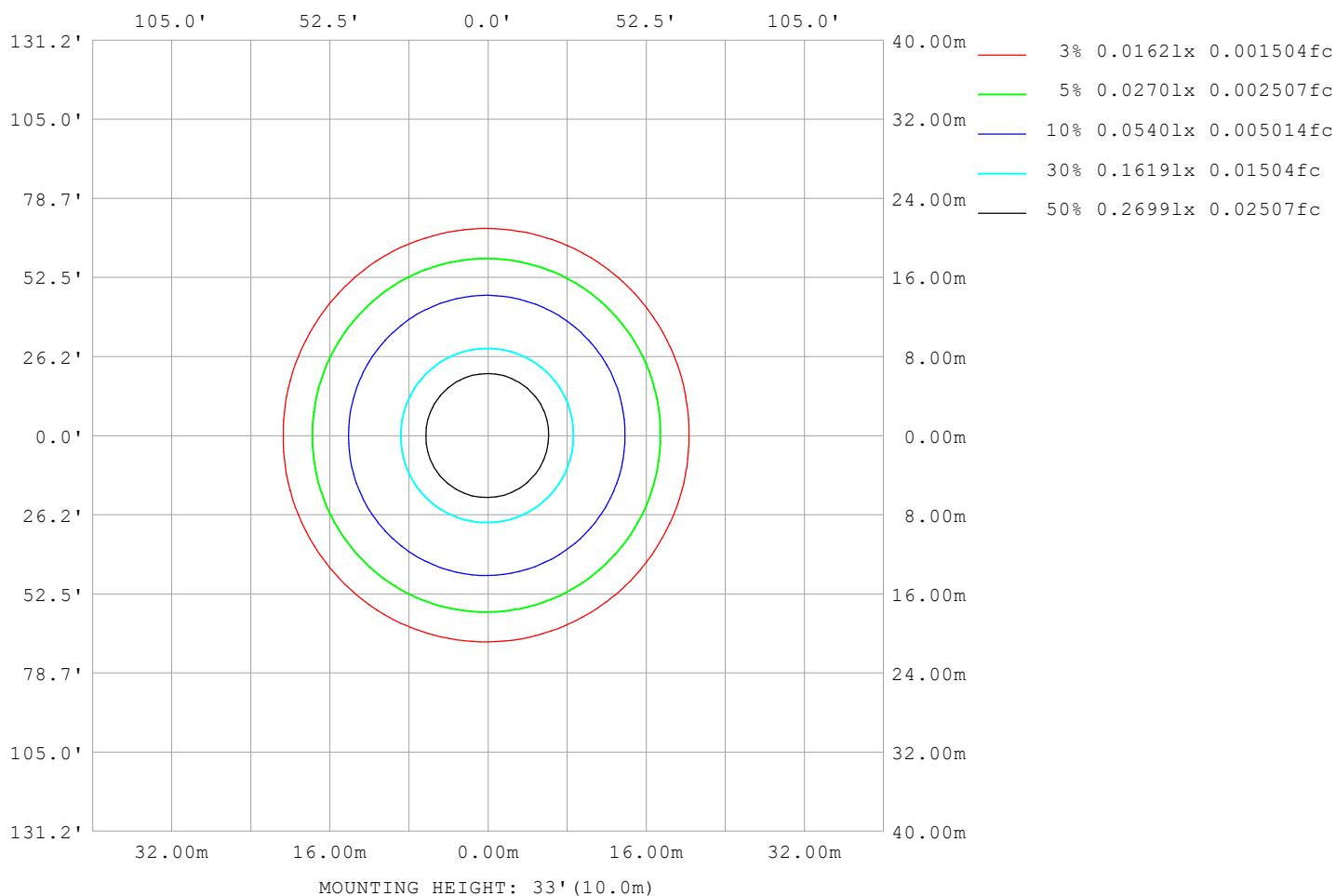
Note:The Curves indicate the illuminated area and the average illumination when the luminaire is at different distance.

C Range: 0 - 360DEG
C Interval: 30.0DEG
Test Speed: HIGH
Temperature:25.3℃
Operators:
Test Date:2025-03-06

γ Range: 0 - 180DEG
γ Interval: 1.0DEG
Test System:EVERFINE GO-2000B_V1 SYSTEM V2.00.488
Humidity:65.0%
Test Distance:6.360m [K=1.0000]
Remarks:

ISOLUX DIAGRAM

Test:U:24.00V I:0.2349A P:5.638W PF:1.000 Freq:0Hz Lamp Flux:160.497x1 lm		
NAME: SF15-24V-5050-70-SPI-RGBW(4000K)-W	TYPE:	WEIGHT:
SPEC.:	DIM.: Length=1m	SERIAL No.:
MFR.: OLympia lighting	SUR.:	Shielding Angle:



C Range: 0 - 360DEG
C Interval: 30.0DEG
Test Speed: HIGH
Temperature: 25.3°C
Operators:
Test Date: 2025-03-06

γ Range: 0 - 180DEG
γ Interval: 1.0DEG
Test System: EVERFINE GO-2000B_V1 SYSTEM V2.00.488
Humidity: 65.0%
Test Distance: 6.360m [K=1.0000]
Remarks:

LED Avg.L Report

Test:U:24.00V I:0.2349A P:5.638W PF:1.000 Freq:0Hz Lamp Flux:160.497x1 lm		
NAME: SF15-24V-5050-70-SPI-RGBW(4000K)-W	TYPE:	WEIGHT:
SPEC.:	DIM.: Length=1m	SERIAL No.:
MFR.: OLympia lighting	SUR.:	Shielding Angle:

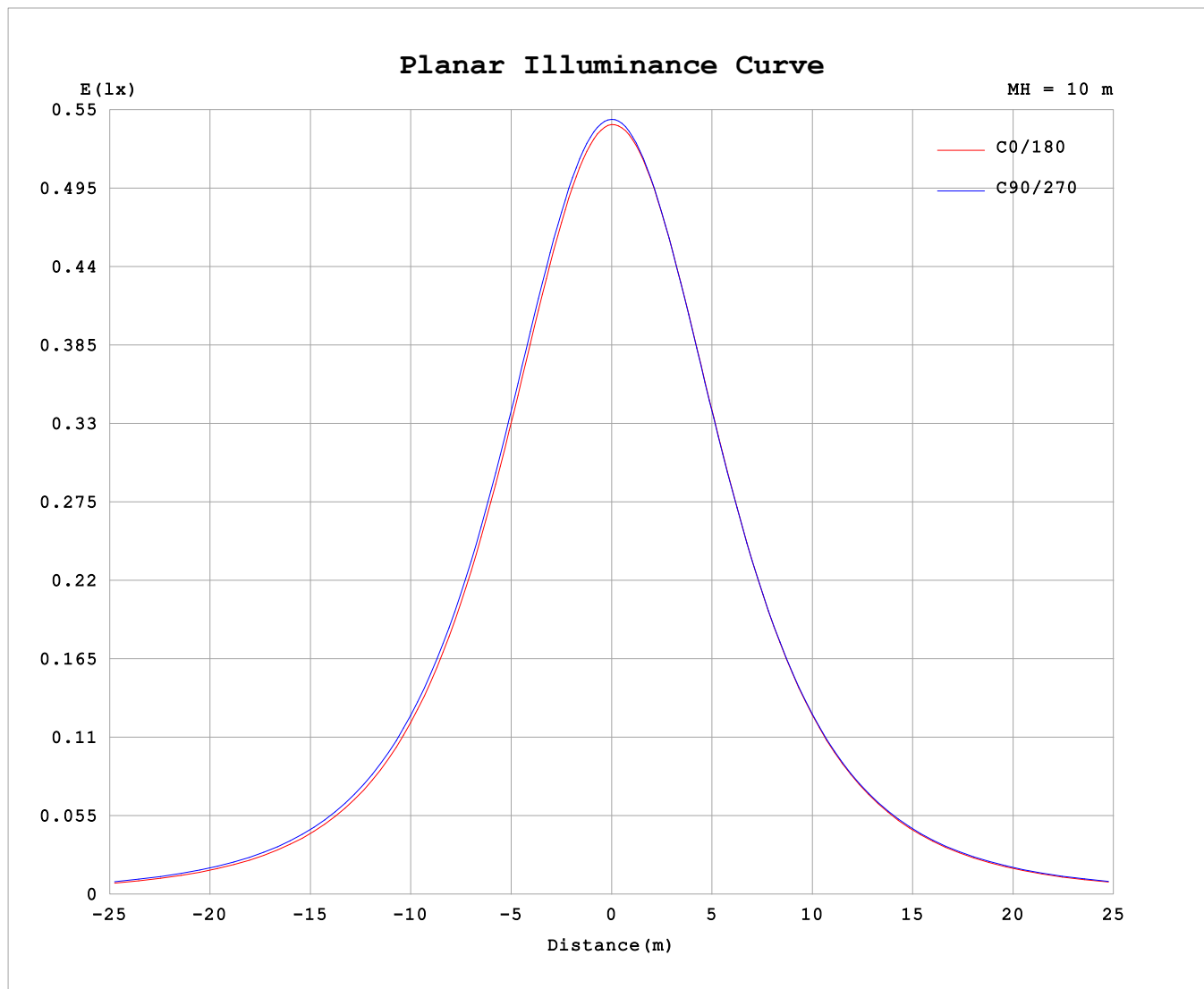
AvgL	cd/m2
L_0~180 (65) av	3798
L_0~180 (75) av	3364
L_0~180 (85) av	2495
L_90~270 (65) av	4047
L_90~270 (75) av	3867
L_90~270 (85) av	3962
L_45 (65) av	3932
L_45 (75) av	3613
L_45 (85) av	3091

Standard: GB/T 29293-2012

C Range: 0 - 360DEG
 C Interval: 30.0DEG
 Test Speed: HIGH
 Temperature:25.3℃
 Operators:
 Test Date:2025-03-06

γ Range: 0 - 180DEG
 γ Interval: 1.0DEG
 Test System:EVERFINE GO-2000B_V1 SYSTEM V2.00.488
 Humidity:65.0%
 Test Distance:6.360m [K=1.0000]
 Remarks:

Planar Illuminance Curve



C Range: 0 - 360DEG
C Interval: 30.0DEG
Test Speed: HIGH
Temperature: 25.3 °C
Operators:
Test Date: 2025-03-06

γ Range: 0 - 180DEG
 γ Interval: 1.0DEG
Test System: EVERFINE GO-2000B_V1 SYSTEM V2.00.488
Humidity: 65.0%
Test Distance: 6.360m [K=1.0000]
Remarks:

LUMINOUS DISTRIBUTION INTENSITY DATA

Test:U:24.00V I:0.2349A P:5.638W PF:1.000 Freq:0Hz Lamp Flux:160.497x1 lm		
NAME: SF15-24V-5050-70-SPI-RGBW(4000K)-W	TYPE:	WEIGHT:
SPEC.:	DIM.: Length=1m	SERIAL No.:
MFR.: Olym pia lighting	SUR.:	Shielding Angle:

Table--1

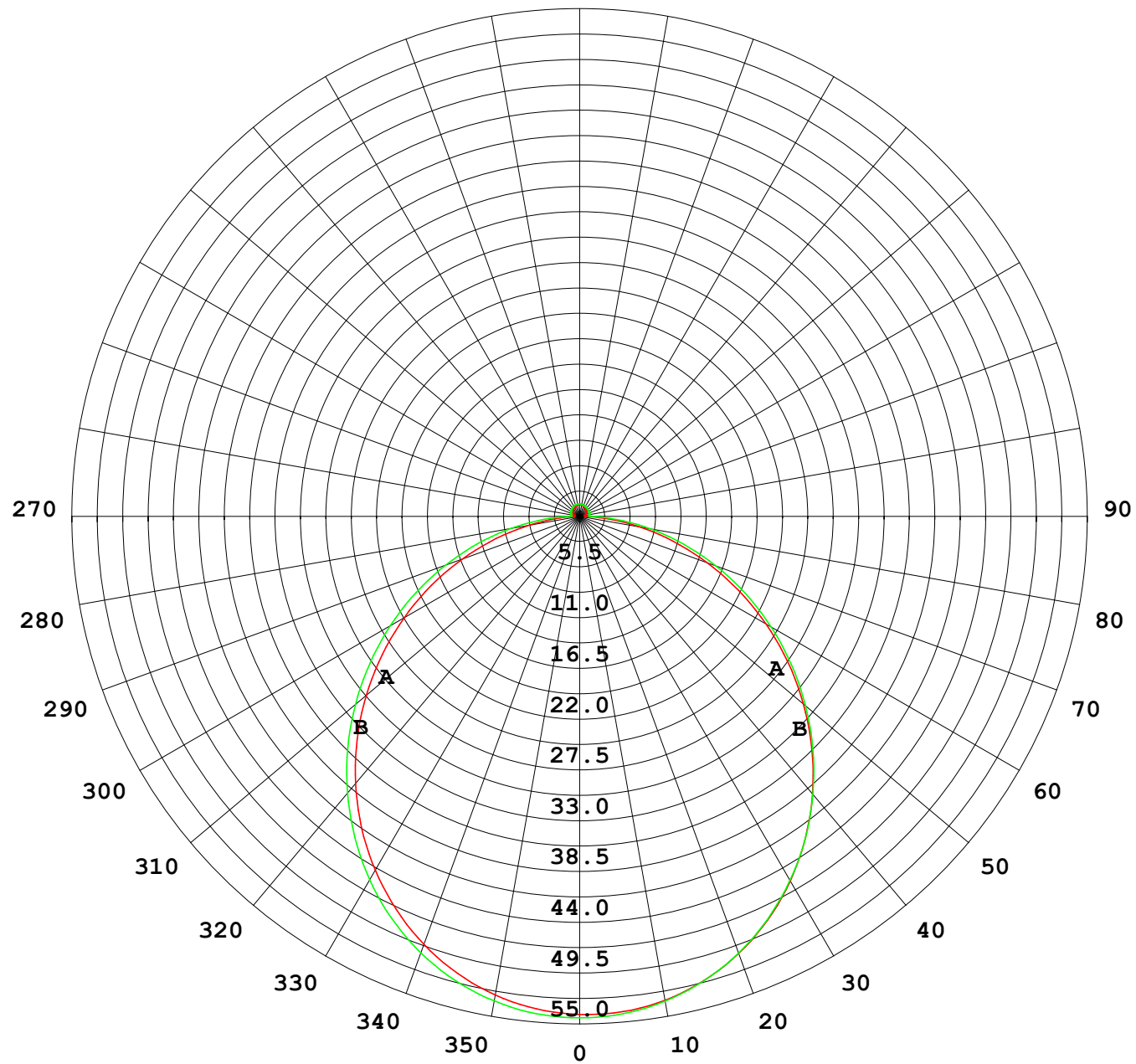
UNIT: cd

C (DEG) γ (DEG)	0	30	60	90	120	150	180	210	240	270	300	330							
0	54.3	54.3	54.3	54.3	54.3	54.3	54.3	54.3	54.3	54.3	54.3	54.3							
5	53.9	53.9	54.0	54.0	54.1	54.1	54.2	54.2	54.1	54.0	54.0	53.9							
10	52.9	53.1	53.2	53.3	53.4	53.5	53.5	53.5	53.4	53.3	53.2	53.1							
15	51.5	51.7	51.8	52.0	52.2	52.3	52.3	52.4	52.3	52.0	51.9	51.7							
20	49.6	49.8	50.0	50.3	50.6	50.7	50.7	50.7	50.6	50.3	50.1	49.8							
25	47.3	47.5	47.8	48.1	48.4	48.5	48.5	48.5	48.5	48.1	47.9	47.5							
30	44.5	44.8	45.1	45.4	45.8	45.9	45.9	46.0	45.9	45.5	45.2	44.8							
35	41.4	41.7	42.1	42.4	42.9	42.9	42.8	43.0	42.9	42.6	42.2	41.7							
40	38.0	38.2	38.7	39.1	39.5	39.6	39.5	39.7	39.7	39.3	38.8	38.3							
45	34.3	34.6	35.0	35.5	35.9	35.9	35.8	36.0	36.1	35.7	35.2	34.6							
50	30.3	30.7	31.2	31.7	32.1	32.0	31.8	32.1	32.3	31.9	31.4	30.7							
55	26.3	26.6	27.2	27.7	28.0	27.8	27.7	28.0	28.3	28.0	27.4	26.7							
60	22.1	22.4	23.1	23.6	23.9	23.5	23.4	23.7	24.1	23.9	23.4	22.5							
65	17.8	18.2	19.0	19.5	19.6	19.2	19.1	19.4	19.9	19.8	19.2	18.3							
70	13.6	14.0	14.8	15.4	15.4	14.9	14.8	15.0	15.7	15.7	15.1	14.1							
75	9.46	9.93	10.8	11.4	11.2	10.7	10.6	10.9	11.5	11.6	11.0	10.0							
80	5.52	6.03	6.86	7.50	7.23	6.69	6.54	6.85	7.49	7.73	7.05	6.12							
85	2.15	2.54	3.19	3.88	3.49	2.96	2.85	3.11	3.70	4.07	3.35	2.56							
90	0.59	0.69	0.81	0.92	0.83	0.69	0.56	0.71	0.92	1.02	0.90	0.71							
95	0.60	0.70	0.80	0.94	0.83	0.72	0.59	0.70	0.94	1.02	0.92	0.71							
100	0.65	0.74	0.84	0.98	0.88	0.77	0.63	0.73	0.98	1.06	0.97	0.73							
105	0.70	0.77	0.87	1.01	0.93	0.82	0.68	0.78	1.03	1.09	1.01	0.79							
110	0.76	0.82	0.92	1.04	0.98	0.87	0.73	0.82	1.06	1.12	1.04	0.84							
115	0.82	0.87	0.96	1.06	1.02	0.92	0.77	0.87	1.09	1.13	1.06	0.89							
120	0.87	0.94	1.00	1.09	1.06	0.97	0.82	0.90	1.12	1.14	1.07	0.93							
125	0.93	1.01	1.06	1.12	1.09	1.01	0.86	0.94	1.13	1.16	1.09	0.98							
130	1.00	1.05	1.11	1.15	1.12	1.05	0.91	0.98	1.15	1.17	1.12	1.01							
135	1.04	1.09	1.14	1.19	1.15	1.09	0.95	1.02	1.17	1.18	1.14	1.01							
140	1.08	1.13	1.17	1.22	1.19	1.13	1.00	1.06	1.19	1.20	1.16	1.03							
145	1.11	1.16	1.21	1.25	1.21	1.16	1.05	1.09	1.21	1.22	1.18	1.06							
150	1.15	1.20	1.23	1.28	1.24	1.21	1.10	1.13	1.24	1.25	1.21	1.10							
155	1.19	1.23	1.26	1.31	1.26	1.24	1.15	1.18	1.27	1.27	1.25	1.15							
160	1.23	1.26	1.29	1.33	1.28	1.28	1.20	1.22	1.29	1.28	1.28	1.19							
165	1.27	1.29	1.31	1.34	1.31	1.31	1.24	1.25	1.31	1.30	1.30	1.22							
170	1.29	1.33	1.32	1.35	1.33	1.33	1.28	1.28	1.33	1.32	1.32	1.28							
175	1.31	1.33	1.33	1.35	1.34	1.34	1.31	1.31	1.35	1.33	1.34	1.32							
180	1.32	1.33	1.34	1.35	1.35	1.34	1.31	1.33	1.35	1.35	1.35	1.34							

C Range: 0 - 360DEG
C Interval: 30.0DEG
Test Speed: HIGH
Temperature:25.3℃
Operators:
Test Date:2025-03-06

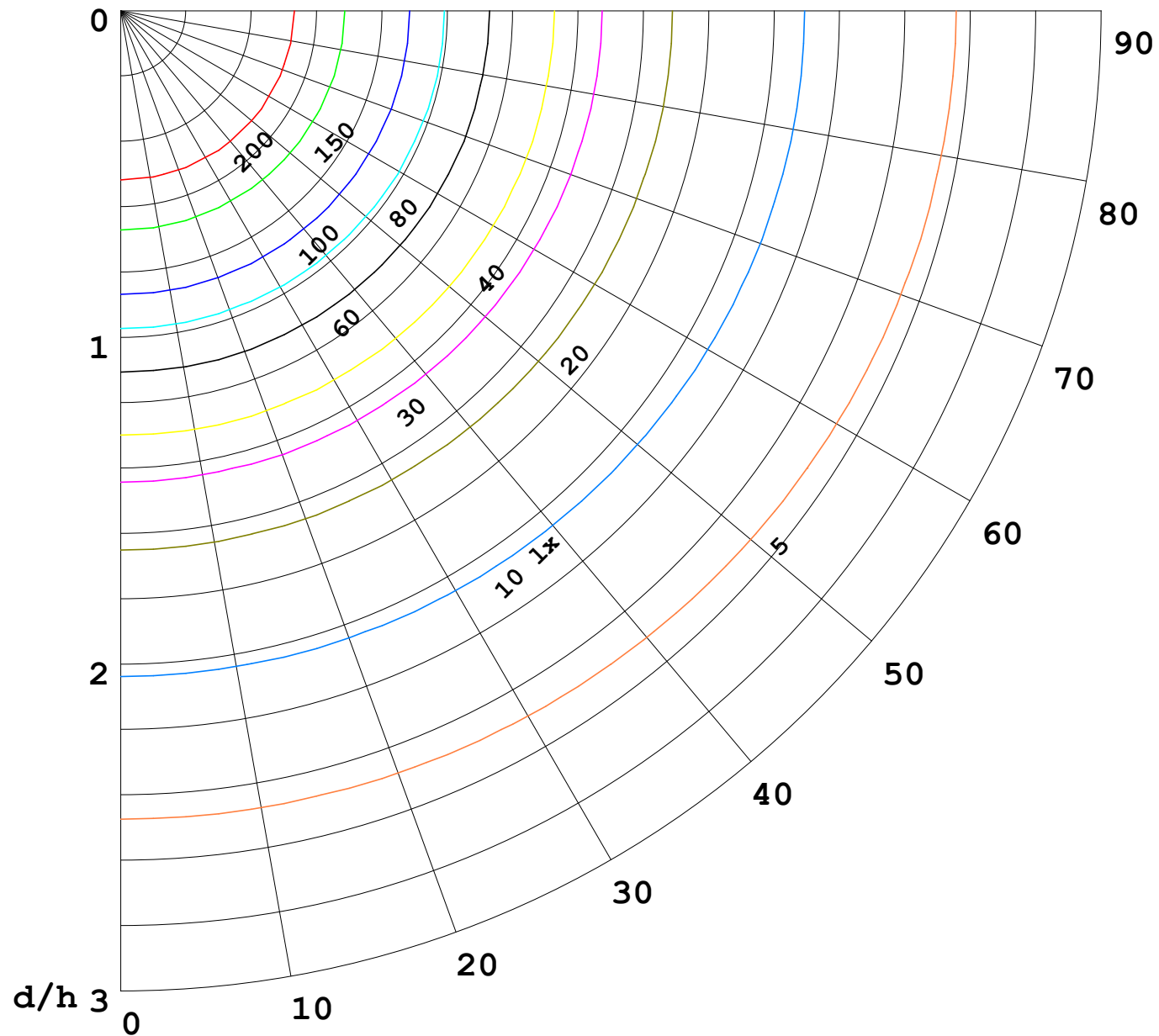
γ Range: 0 - 180DEG
γ Interval: 1.0DEG
Test System:EVERFINE GO-2000B_V1 SYSTEM V2.00.488
Humidity:65.0%
Test Distance:6.360m [K=1.0000]
Remarks:

I (cd)



1000 lm

$\kappa = 1$



F = 1000 lm
 K = 0.7
 Hcc = 0.8 m
 Hfc = 0.0 m
 Eave = 100 lx

	Pcc	Pw	Pfc
—————	70	50	30
—————	50	30	20

