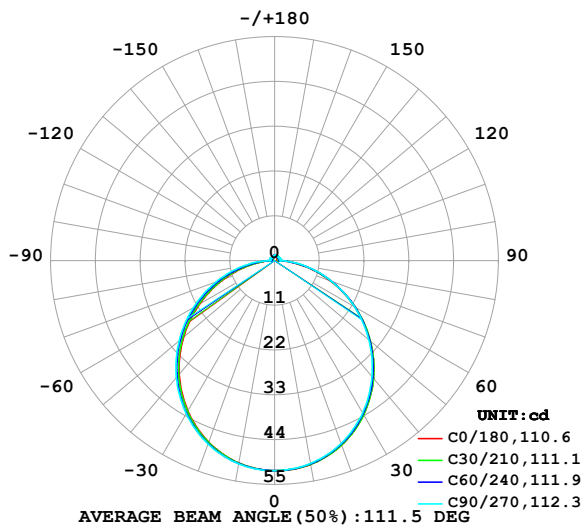


LUMINAIRE PHOTOMETRIC TEST REPORT

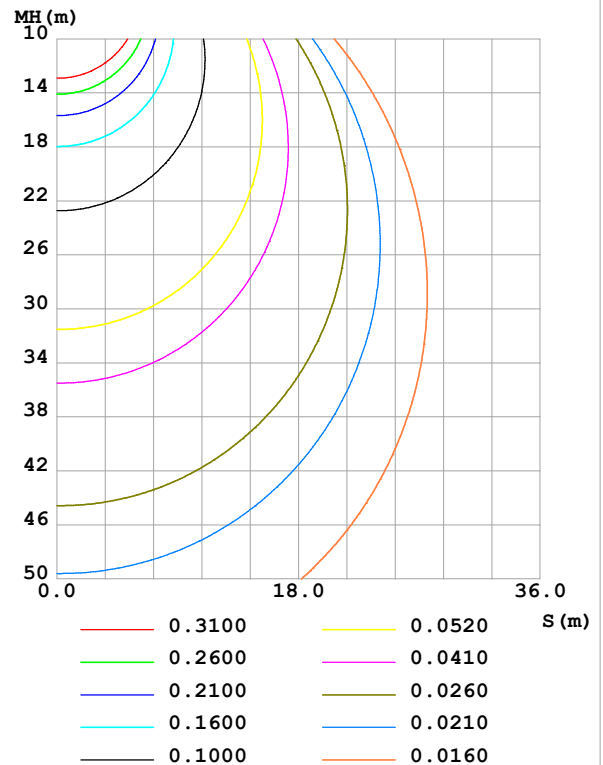
| | | |
|--|-----------------|------------------|
| Test:U:24.00V I:0.2365A P:5.676W PF:1.000 Freq:0Hz Lamp Flux:155.008x1 lm | | |
| NAME: SF15-24V-5050-70-SPI-RGBW(3000K)-W | TYPE: | WEIGHT: |
| SPEC.: | DIM.: Length=1m | SERIAL No.: |
| MFR.: OLympia lighting | SUR.: | Shielding Angle: |

| DATA OF LAMP | | PHOTOMETRIC DATA Eff: 27.31 lm/W | | | |
|------------------|---------|----------------------------------|--------|-------------------|----------|
| MODEL | 5050 | I _{max} (cd) | 51.59 | S/MH(C0/180) | 1.23 |
| NOMINAL POWER(W) | | LOR(%) | 100.0 | S/MH(C90/270) | 1.25 |
| RATED VOLTAGE(V) | 24 | TOTAL FLUX(lm) | 155.01 | η UP,DN(C0-180) | 2.3,47.9 |
| NOMINAL FLUX(lm) | 155.008 | CIE CLASS | DIRECT | η UP,DN(C180-360) | 2.0,47.8 |
| LAMPS INSIDE | 1 | η up (%) | 4.3 | CIBSE SHR NOM | 1.25 |
| TEST VOLTAGE(V) | | η down (%) | 95.7 | CIBSE SHR MAX | 1.35 |

LUMINOUS INTENSITY DISTRIBUTION DIAGRAM



C0 PLANE ISOLUX DIAGRAM (UNIT:lx)



C Range: 0 - 360DEG
C Interval: 30.0DEG
Test Speed: HIGH
Temperature:25.3℃
Operators:
Test Date:2025-03-17

γ Range: 0 - 180DEG
γ Interval: 1.0DEG
Test System:EVERFINE GO-2000B_V1 SYSTEM V2.00.488
Humidity:65.0%
Test Distance:6.360m [K=1.0000]
Remarks:

ZONAL FLUX DIAGRAM

ZONAL FLUX DIAGRAM:

| γ | C0 | C45 | C90 | C135 | C180 | C225 | C270 | C315 | γ | Φ zone | Φ total | %lum,lamp |
|----------|-----------------------|-------|-------|-------|--------|--------|-------|--------|----------|-------------|--------------|-----------|
| 10 | 50.82 | 50.77 | 50.63 | 50.54 | 50.50 | 50.58 | 50.70 | 50.83 | 0- 10 | 4.882 | 4.882 | 3.15,3.15 |
| 20 | 48.16 | 48.08 | 47.80 | 47.60 | 47.43 | 47.66 | 47.92 | 48.18 | 10- 20 | 13.97 | 18.85 | 12.2,12.2 |
| 30 | 43.73 | 43.63 | 43.25 | 42.95 | 42.65 | 43.04 | 43.42 | 43.77 | 20- 30 | 21.10 | 39.95 | 25.8,25.8 |
| 40 | 37.78 | 37.67 | 37.22 | 36.85 | 36.43 | 36.99 | 37.54 | 37.87 | 30- 40 | 25.31 | 65.26 | 42.1,42.1 |
| 50 | 30.65 | 30.61 | 30.21 | 29.69 | 29.18 | 29.85 | 30.60 | 30.84 | 40- 50 | 26.13 | 91.39 | 59,59 |
| 60 | 22.75 | 22.83 | 22.62 | 21.87 | 21.27 | 22.04 | 23.02 | 23.09 | 50- 60 | 23.58 | 115.0 | 74.2,74.2 |
| 70 | 14.56 | 14.81 | 14.88 | 13.88 | 13.16 | 14.02 | 15.24 | 15.07 | 60- 70 | 18.25 | 133.2 | 85.9,85.9 |
| 80 | 6.820 | 7.196 | 7.532 | 6.343 | 5.611 | 6.423 | 7.826 | 7.381 | 70- 80 | 11.19 | 144.4 | 93.2,93.2 |
| 90 | 0.9685 | 1.214 | 1.395 | 1.241 | 0.8522 | 0.9653 | 1.338 | 1.069 | 80- 90 | 3.934 | 148.3 | 95.7,95.7 |
| 100 | 0.7089 | 1.017 | 1.378 | 1.164 | 0.7550 | 0.8484 | 1.274 | 0.7351 | 90-100 | 1.074 | 149.4 | 96.4,96.4 |
| 110 | 0.7808 | 1.047 | 1.354 | 1.183 | 0.8098 | 0.8930 | 1.288 | 0.7870 | 100-110 | 1.043 | 150.5 | 97.1,97.1 |
| 120 | 0.8731 | 1.095 | 1.323 | 1.209 | 0.8876 | 0.9522 | 1.256 | 0.8506 | 110-120 | 1.019 | 151.5 | 97.7,97.7 |
| 130 | 0.9566 | 1.131 | 1.294 | 1.222 | 0.9597 | 0.9970 | 1.178 | 0.9184 | 120-130 | 0.9528 | 152.4 | 98.3,98.3 |
| 140 | 1.037 | 1.164 | 1.291 | 1.236 | 1.040 | 1.058 | 1.129 | 0.9517 | 130-140 | 0.8465 | 153.3 | 98.9,98.9 |
| 150 | 1.112 | 1.199 | 1.294 | 1.253 | 1.124 | 1.124 | 1.121 | 1.030 | 140-150 | 0.7108 | 154.0 | 99.3,99.3 |
| 160 | 1.193 | 1.242 | 1.294 | 1.271 | 1.210 | 1.205 | 1.161 | 1.138 | 150-160 | 0.5476 | 154.5 | 99.7,99.7 |
| 170 | 1.253 | 1.275 | 1.294 | 1.291 | 1.268 | 1.277 | 1.256 | 1.236 | 160-170 | 0.3512 | 154.9 | 99.9,99.9 |
| 180 | 1.282 | 1.296 | 1.308 | 1.301 | 1.282 | 1.297 | 1.308 | 1.298 | 170-180 | 0.1223 | 155.0 | 100,100 |
| DEG | LUMINOUS INTENSITY:cd | | | | | | | | | UNIT:lm | | |

Conical surface Flux(90deg): 78.438 lm

%lum = 50.6%

%lamp = 50.6%

Conical surface Flux(130deg): 124.9 lm

%lum = 80.6%

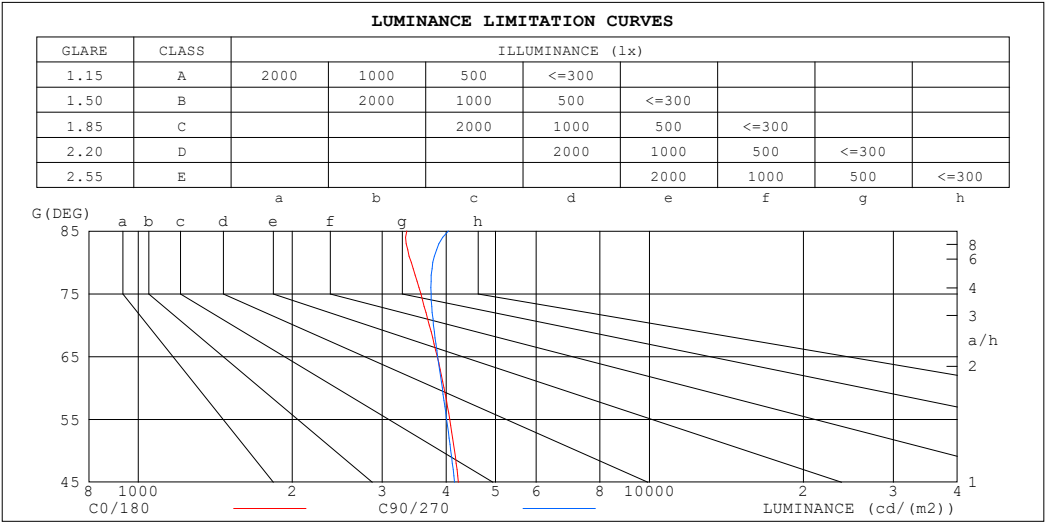
%lamp = 80.6%

C Range: 0 - 360DEG
 C Interval: 30.0DEG
 Test Speed: HIGH
 Temperature:25.3℃
 Operators:
 Test Date:2025-03-17

γ Range: 0 - 180DEG
 γ Interval: 1.0DEG
 Test System:EVERFINE GO-2000B_V1 SYSTEM V2.00.488
 Humidity:65.0%
 Test Distance:6.360m [K=1.0000]
 Remarks:

LUMINANCE LIMITATION CURVES

| | | |
|--|-----------------|------------------|
| Test:U:24.00V I:0.2365A P:5.676W PF:1.000 Freq:0Hz Lamp Flux:155.008x1 lm | | |
| NAME: SF15-24V-5050-70-SPI-RGBW(3000K)-W | TYPE: | WEIGHT: |
| SPEC.: | DIM.: Length=1m | SERIAL No.: |
| MFR.: OLympia lighting | SUR.: | Shielding Angle: |



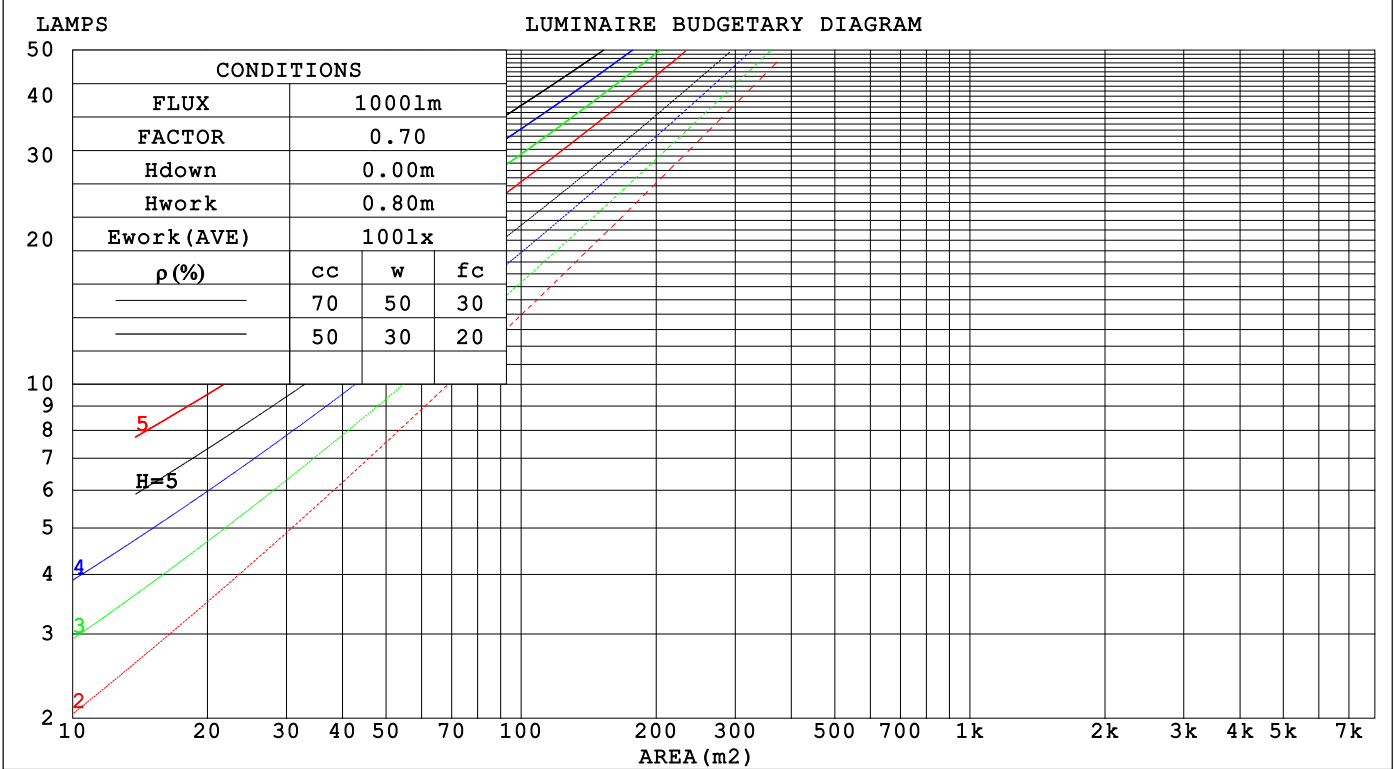
| LUMINANCE cd/(m2) | | |
|-------------------|--------|---------|
| G (DEG) | C0/180 | C90/270 |
| 85 | 3351 | 4042 |
| 80 | 3421 | 3769 |
| 75 | 3570 | 3742 |
| 70 | 3709 | 3780 |
| 65 | 3844 | 3851 |
| 60 | 3962 | 3931 |
| 55 | 4064 | 4009 |
| 50 | 4153 | 4084 |
| 45 | 4230 | 4156 |

| | |
|----------------------|---|
| C Range: 0 - 360DEG | γ Range: 0 - 180DEG |
| C Interval: 30.0DEG | γ Interval: 1.0DEG |
| Test Speed: HIGH | Test System:EVERFINE GO-2000B_V1 SYSTEM V2.00.488 |
| Temperature:25.3℃ | Humidity:65.0% |
| Operators: | Test Distance:6.360m [K=1.0000] |
| Test Date:2025-03-17 | Remarks: |

CU AND LUMINAIRE BUDGETARY ESTIMATE DIAGRAM

| | | |
|--|-----------------|------------------|
| Test:U:24.00V I:0.2365A P:5.676W PF:1.000 Freq:0Hz | | |
| Lamp Flux:155.008x1 lm | | |
| NAME: SF15-24V-5050-70-SPI-RGBW(3000K)-W | TYPE: | WEIGHT: |
| SPEC.: | DIM.: Length=1m | SERIAL No.: |
| MFR.: OLYMPIA lighting | SUR.: | Shielding Angle: |

| | | | | | | | | | | | | | | | | |
|-----|-----------------------|-----|-----|-----|-----|-----|-----|-----|-----|-----|-----|-----|-----|-----|-----|---|
| pcc | 80% | | | 70% | | | 50% | | | 30% | | | 10% | | | 0 |
| pw | 50% | 30% | 10% | 50% | 30% | 10% | 50% | 30% | 10% | 50% | 30% | 10% | 50% | 30% | 10% | 0 |
| pfc | 20% | | | 20% | | | 20% | | | 20% | | | 20% | | | 0 |
| RCR | RCR:Room Cavity Ratio | | | | | | | | | | | | | | | |



C Range: 0 - 360DEG

C Interval: 30.0DEG

Test Speed: HIGH

Temperature:25.3℃

Operators:

Test Date:2025-03-17

γ Range: 0 - 180DEG

γ Interval: 1.0DEG

Test System:EVERFINE GO-2000B_V1 SYSTEM V2.00.488

Humidity:65.0%

Test Distance:6.360m [K=1.0000]

Remarks:

WEC AND CCEC

| | | |
|--|-----------------|------------------|
| Test:U:24.00V I:0.2365A P:5.676W PF:1.000 Freq:0Hz Lamp Flux:155.008x1 lm | | |
| NAME: SF15-24V-5050-70-SPI-RGBW(3000K)-W | TYPE: | WEIGHT: |
| SPEC.: | DIM.: Length=1m | SERIAL No.: |
| MFR.: OLympia lighting | SUR.: | Shielding Angle: |

| pcc | 80% | | | 70% | | | 50% | | | 30% | | | 10% | | | 0 | | | | | | | | | | | | | | |
|------|-----------------------|------|------|------|------|------|------|------|------|------|------|------|------|------|------|---------------------------------|--|--|--|--|--|--|--|--|--|--|--|--|--|--|
| pw | 50% | 30% | 10% | 50% | 30% | 10% | 50% | 30% | 10% | 50% | 30% | 10% | 50% | 30% | 10% | 0 | | | | | | | | | | | | | | |
| pfc | 20% | | | 20% | | | 20% | | | 20% | | | 20% | | | 0 | | | | | | | | | | | | | | |
| RCR | RCR:Room Cavity Ratio | | | | | | | | | | | | | | | Wall Exitance Coefficients(WEC) | | | | | | | | | | | | | | |
| 0.0 | | | | | | | | | | | | | | | | | | | | | | | | | | | | | | |
| 1.0 | .317 | .181 | .057 | .309 | .176 | .056 | .293 | .168 | .054 | .279 | .161 | .052 | .266 | .154 | .050 | | | | | | | | | | | | | | | |
| 2.0 | .295 | .162 | .050 | .288 | .158 | .049 | .274 | .152 | .047 | .261 | .146 | .046 | .249 | .141 | .044 | | | | | | | | | | | | | | | |
| 3.0 | .271 | .144 | .043 | .265 | .142 | .043 | .252 | .137 | .042 | .241 | .132 | .040 | .230 | .127 | .039 | | | | | | | | | | | | | | | |
| 4.0 | .250 | .130 | .038 | .244 | .128 | .038 | .233 | .123 | .037 | .222 | .119 | .036 | .213 | .116 | .035 | | | | | | | | | | | | | | | |
| 5.0 | .230 | .117 | .034 | .225 | .116 | .034 | .215 | .112 | .033 | .206 | .109 | .032 | .197 | .105 | .032 | | | | | | | | | | | | | | | |
| 6.0 | .213 | .107 | .031 | .209 | .105 | .030 | .200 | .102 | .030 | .191 | .099 | .029 | .183 | .097 | .029 | | | | | | | | | | | | | | | |
| 7.0 | .198 | .098 | .028 | .194 | .097 | .028 | .186 | .094 | .027 | .178 | .091 | .027 | .171 | .089 | .026 | | | | | | | | | | | | | | | |
| 8.0 | .185 | .090 | .025 | .181 | .089 | .025 | .174 | .087 | .025 | .167 | .085 | .024 | .161 | .082 | .024 | | | | | | | | | | | | | | | |
| 9.0 | .173 | .084 | .023 | .170 | .083 | .023 | .163 | .081 | .023 | .157 | .079 | .023 | .151 | .077 | .022 | | | | | | | | | | | | | | | |
| 10.0 | .163 | .078 | .022 | .160 | .077 | .022 | .154 | .075 | .021 | .148 | .074 | .021 | .143 | .072 | .021 | | | | | | | | | | | | | | | |

| pcc | 80% | | | 70% | | | 50% | | | 30% | | | 10% | | | 0 |
|------|-----------------------|------|------|------|------|------|---|------|------|------|------|------|------|------|------|---|
| pw | 50% | 30% | 10% | 50% | 30% | 10% | 50% | 30% | 10% | 50% | 30% | 10% | 50% | 30% | 10% | 0 |
| pfc | 20% | | | 20% | | | 20% | | | 20% | | | 20% | | | 0 |
| RCR | RCR:Room Cavity Ratio | | | | | | Ceiling Cavity Exitance Coefficients (CCEC) | | | | | | | | | |
| 0.0 | .223 | .223 | .223 | .191 | .191 | .191 | .130 | .130 | .130 | .075 | .075 | .075 | .024 | .024 | .024 | |
| 1.0 | .214 | .189 | .167 | .183 | .162 | .144 | .125 | .112 | .099 | .072 | .065 | .058 | .023 | .021 | .019 | |
| 2.0 | .206 | .165 | .131 | .176 | .142 | .113 | .121 | .098 | .079 | .070 | .057 | .046 | .022 | .019 | .015 | |
| 3.0 | .198 | .148 | .108 | .170 | .127 | .093 | .117 | .089 | .065 | .067 | .052 | .039 | .022 | .017 | .013 | |
| 4.0 | .191 | .135 | .092 | .164 | .116 | .080 | .112 | .081 | .056 | .065 | .047 | .033 | .021 | .015 | .011 | |
| 5.0 | .183 | .124 | .081 | .157 | .108 | .070 | .108 | .075 | .050 | .063 | .044 | .029 | .020 | .014 | .010 | |
| 6.0 | .176 | .116 | .073 | .151 | .100 | .064 | .104 | .070 | .045 | .061 | .041 | .027 | .020 | .014 | .009 | |
| 7.0 | .169 | .109 | .067 | .145 | .095 | .059 | .101 | .066 | .041 | .058 | .039 | .025 | .019 | .013 | .008 | |
| 8.0 | .163 | .103 | .063 | .140 | .090 | .055 | .097 | .063 | .039 | .056 | .037 | .023 | .018 | .012 | .008 | |
| 9.0 | .157 | .099 | .059 | .135 | .086 | .052 | .093 | .060 | .037 | .054 | .035 | .022 | .018 | .012 | .007 | |
| 10.0 | .151 | .094 | .057 | .130 | .082 | .049 | .090 | .058 | .035 | .053 | .034 | .021 | .017 | .011 | .007 | |

C Range: 0 - 360DEG
C Interval: 30.0DEG
Test Speed: HIGH
Temperature:25.3℃
Operators:
Test Date:2025-03-17

γ Range: 0 - 180DEG
γ Interval: 1.0DEG
Test System:EVERFINE GO-2000B_V1 SYSTEM V2.00.488
Humidity:65.0%
Test Distance:6.360m [K=1.0000]
Remarks:

UGR(Unified Glare Rating) Table

| | | | | | | | | | | | |
|--|-----|------------------|------|------|-----------------|------|----------------|------------------|------|------|------|
| Test:U:24.00V I:0.2365A P:5.676W PF:1.000 Freq:0Hz Lamp Flux:155.008x1 lm | | | | | | | | | | | |
| NAME: SF15-24V-5050-70-SPI-RGBW(3000K)-W | | | | | TYPE: | | | WEIGHT: | | | |
| SPEC.: | | | | | DIM.: Length=1m | | | SERIAL No.: | | | |
| MFR.: OLympia lighting | | | | | SUR.: | | | Shielding Angle: | | | |
| ceiling/cavity | 0.7 | 0.7 | 0.5 | 0.5 | 0.3 | 0.7 | 0.7 | 0.5 | 0.5 | 0.3 | |
| walls | 0.5 | 0.3 | 0.5 | 0.3 | 0.3 | 0.5 | 0.3 | 0.5 | 0.3 | 0.3 | |
| working plane | 0.2 | 0.2 | 0.2 | 0.2 | 0.2 | 0.2 | 0.2 | 0.2 | 0.2 | 0.2 | |
| Room dimensions | | Viewed crosswise | | | | | Viewed endwise | | | | |
| x = 2H y = 2H | 2H | 22.9 | 24.3 | 23.2 | 24.6 | 24.9 | 22.8 | 24.3 | 23.1 | 24.6 | 24.8 |
| | 3H | 24.4 | 25.8 | 24.8 | 26.1 | 26.4 | 24.4 | 25.8 | 24.8 | 26.1 | 26.4 |
| | 4H | 25.1 | 26.4 | 25.5 | 26.7 | 27.1 | 25.1 | 26.4 | 25.5 | 26.8 | 27.1 |
| | 6H | 25.6 | 26.8 | 26.0 | 27.2 | 27.5 | 25.7 | 26.9 | 26.1 | 27.3 | 27.7 |
| | 8H | 25.8 | 27.0 | 26.2 | 27.3 | 27.7 | 26.0 | 27.1 | 26.4 | 27.5 | 27.9 |
| | 12H | 25.9 | 27.1 | 26.4 | 27.4 | 27.8 | 26.2 | 27.3 | 26.6 | 27.7 | 28.1 |
| 4H | 2H | 23.5 | 24.8 | 23.8 | 25.1 | 25.4 | 23.4 | 24.7 | 23.8 | 25.0 | 25.4 |
| | 3H | 25.2 | 26.4 | 25.7 | 26.7 | 27.1 | 25.2 | 26.4 | 25.7 | 26.7 | 27.1 |
| | 4H | 26.0 | 27.1 | 26.5 | 27.5 | 27.9 | 26.1 | 27.1 | 26.5 | 27.5 | 27.9 |
| | 6H | 26.7 | 27.6 | 27.2 | 28.0 | 28.5 | 26.8 | 27.7 | 27.3 | 28.2 | 28.6 |
| | 8H | 27.0 | 27.8 | 27.4 | 28.2 | 28.7 | 27.1 | 28.0 | 27.6 | 28.4 | 28.9 |
| | 12H | 27.1 | 27.9 | 27.6 | 28.4 | 28.9 | 27.4 | 28.2 | 27.9 | 28.6 | 29.1 |
| 8H | 4H | 26.3 | 27.2 | 26.8 | 27.6 | 28.1 | 26.4 | 27.2 | 26.9 | 27.7 | 28.2 |
| | 6H | 27.2 | 27.9 | 27.7 | 28.4 | 28.9 | 27.3 | 28.0 | 27.8 | 28.5 | 29.0 |
| | 8H | 27.5 | 28.2 | 28.1 | 28.7 | 29.2 | 27.7 | 28.4 | 28.3 | 28.9 | 29.4 |
| | 12H | 27.8 | 28.4 | 28.4 | 28.9 | 29.5 | 28.1 | 28.7 | 28.7 | 29.2 | 29.7 |
| 12H | 4H | 26.4 | 27.2 | 26.9 | 27.6 | 28.1 | 26.4 | 27.2 | 26.9 | 27.7 | 28.2 |
| | 6H | 27.3 | 27.9 | 27.8 | 28.4 | 28.9 | 27.4 | 28.0 | 27.9 | 28.5 | 29.1 |
| | 8H | 27.7 | 28.2 | 28.2 | 28.7 | 29.3 | 27.9 | 28.4 | 28.4 | 28.9 | 29.5 |
| Variations with the observer position at spacings(CIE Pub.117): | | | | | | | | | | | |
| S = 1.0H | | + 0.1 / - 0.2 | | | | | + 0.1 / - 0.2 | | | | |
| 1.5H | | + 0.2 / - 0.3 | | | | | + 0.2 / - 0.3 | | | | |
| 2.0H | | + 0.1 / - 0.3 | | | | | + 0.1 / - 0.3 | | | | |

CIE Pub.117, 155.0 lm Total Lamp Luminous Flux Correct (8log(F/F0) = -6.5)
Area: 0.0115 m2

C Range: 0 - 360DEG
C Interval: 30.0DEG
Test Speed: HIGH
Temperature:25.3℃
Operators:
Test Date:2025-03-17

γ Range: 0 - 180DEG
γ Interval: 1.0DEG
Test System:EVERFINE GO-2000B_V1 SYSTEM V2.00.488
Humidity:65.0%
Test Distance:6.360m [K=1.0000]
Remarks:

UTILIZATION FACTORS TABLE

| | | |
|--|-----------------|------------------|
| Test:U:24.00V I:0.2365A P:5.676W PF:1.000 Freq:0Hz Lamp Flux:155.008x1 lm | | |
| NAME: SF15-24V-5050-70-SPI-RGBW(3000K)-W | TYPE: | WEIGHT: |
| SPEC.: | DIM.: Length=1m | SERIAL No.: |
| MFR.: OLympia lighting | SUR.: | Shielding Angle: |

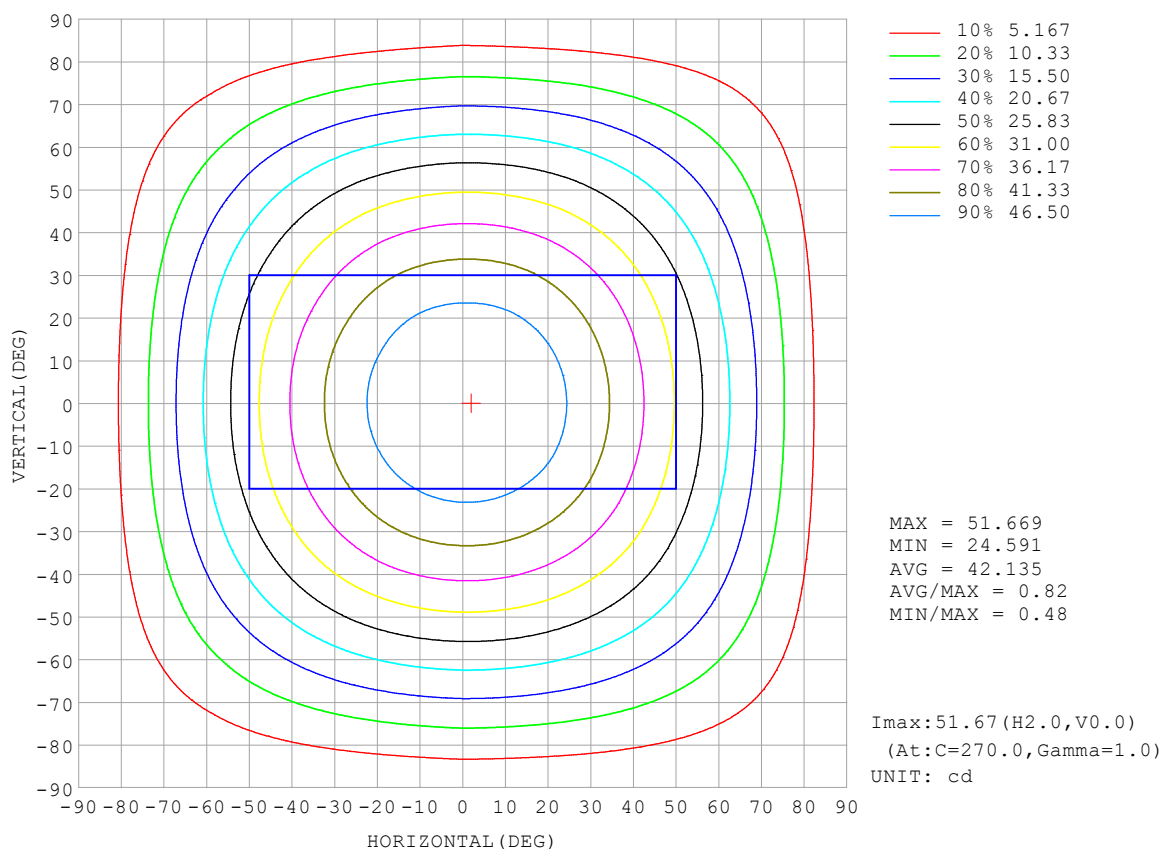
| REFLECTANCE | | | | | | | | | | |
|----------------------------------|--|-----|-----------|-----|-----|-----|-----|---------------|-----|--------|
| Ceiling | 0.8 | 0.8 | 0.8 | 0.7 | 0.7 | 0.7 | 0.5 | 0.5 | 0.5 | 0 |
| Walls | 0.7 | 0.5 | 0.3 | 0.7 | 0.5 | 0.3 | 0.7 | 0.5 | 0.3 | 0 |
| Working plane | 0.2 | 0.2 | 0.2 | 0.2 | 0.2 | 0.2 | 0.2 | 0.2 | 0.2 | 0 |
| ROOM INDEX | UTILIZATION FACTORS (PERCENT) $k(RI) \times RCR = 5$ | | | | | | | | | |
| $k = 0.60$ | 56 | 44 | 37 | 55 | 44 | 37 | 54 | 43 | 37 | 30 |
| 0.80 | 66 | 54 | 47 | 65 | 54 | 46 | 63 | 53 | 46 | 39 |
| 1.00 | 74 | 63 | 55 | 73 | 62 | 55 | 70 | 63 | 54 | 47 |
| 1.25 | 81 | 70 | 63 | 79 | 70 | 63 | 76 | 68 | 62 | 54 |
| 1.50 | 86 | 76 | 69 | 84 | 75 | 68 | 81 | 73 | 67 | 59 |
| 2.00 | 93 | 84 | 78 | 91 | 83 | 77 | 87 | 80 | 75 | 66 |
| 2.50 | 97 | 89 | 83 | 95 | 87 | 82 | 90 | 84 | 79 | 70 |
| 3.00 | 100 | 93 | 88 | 98 | 91 | 86 | 93 | 88 | 83 | 74 |
| 4.00 | 105 | 99 | 94 | 102 | 96 | 92 | 97 | 92 | 89 | 79 |
| 5.00 | 107 | 102 | 98 | 104 | 100 | 96 | 99 | 95 | 92 | 82 |
| ROOM INDEX | UF (total) | | | | | | | | | Direct |
| According to DIN EN 13032-2 2004 | | | Suspended | | | | | SHRNOM = 1.25 | | |

C Range: 0 - 360DEG
 C Interval: 30.0DEG
 Test Speed: HIGH
 Temperature: 25.3 °C
 Operators:
 Test Date: 2025-03-17

γ Range: 0 - 180DEG
 γ Interval: 1.0DEG
 Test System: EVERFINE GO-2000B_V1 SYSTEM V2.00.488
 Humidity: 65.0%
 Test Distance: 6.360m [K=1.0000]
 Remarks:

ISOCANDELA DIAGRAM

| | | |
|--|-----------------|------------------|
| Test:U:24.00V I:0.2365A P:5.676W PF:1.000 Freq:0Hz Lamp Flux:155.008x1 lm | | |
| NAME: SF15-24V-5050-70-SPI-RGBW(3000K)-W | TYPE: | WEIGHT: |
| SPEC.: | DIM.: Length=1m | SERIAL No.: |
| MFR.: OLympia lighting | SUR.: | Shielding Angle: |

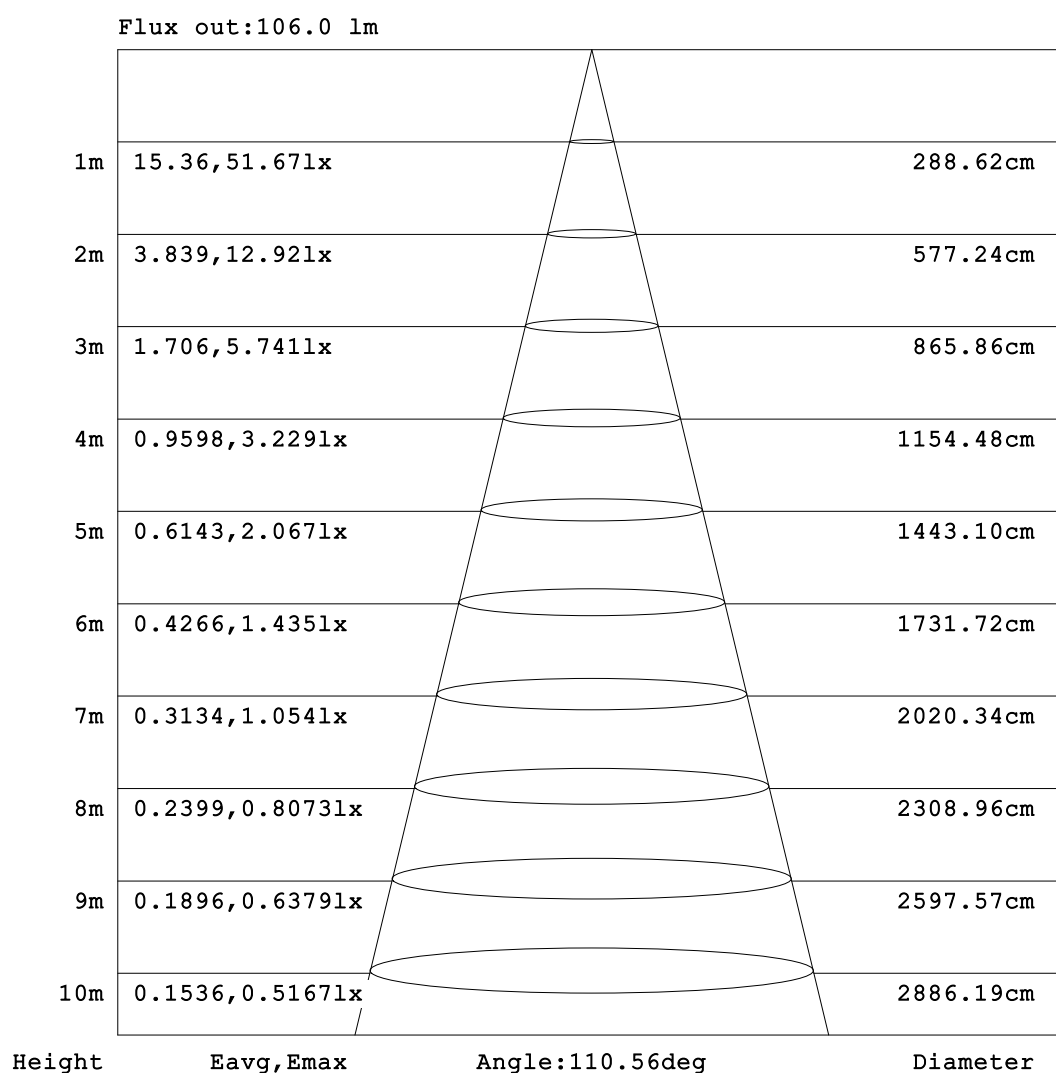


C Range: 0 - 360DEG
C Interval: 30.0DEG
Test Speed: HIGH
Temperature: 25.3°C
Operators:
Test Date: 2025-03-17

γ Range: 0 - 180DEG
γ Interval: 1.0DEG
Test System: EVERFINE GO-2000B_V1 SYSTEM V2.00.488
Humidity: 65.0%
Test Distance: 6.360m [K=1.0000]
Remarks:

AAI Figure

| | | |
|--|-----------------|------------------|
| Test:U:24.00V I:0.2365A P:5.676W PF:1.000 Freq:0Hz Lamp Flux:155.008x1 lm | | |
| NAME: SF15-24V-5050-70-SPI-RGBW(3000K)-W | TYPE: | WEIGHT: |
| SPEC.: | DIM.: Length=1m | SERIAL No.: |
| MFR.: OLympia lighting | SUR.: | Shielding Angle: |



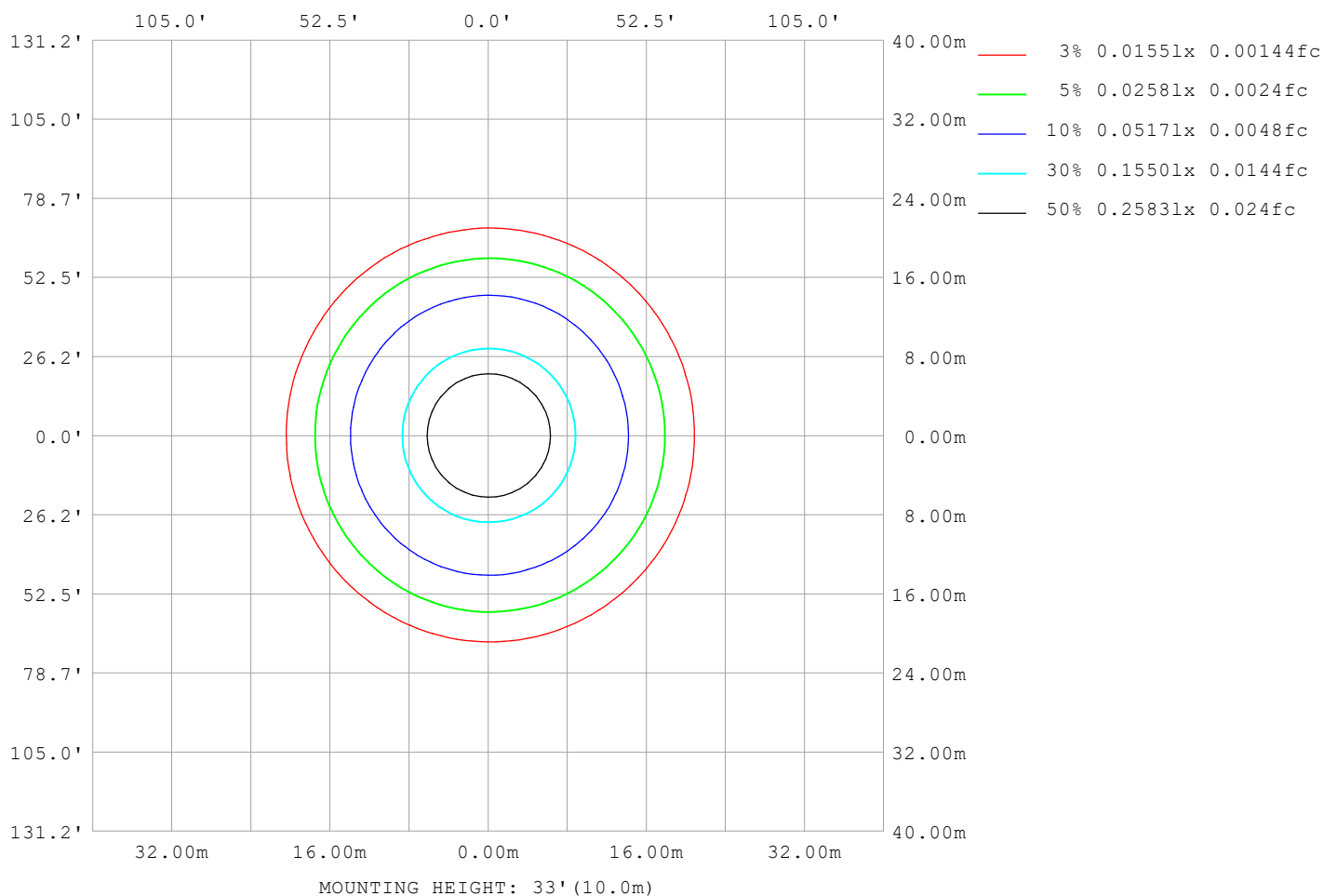
Note:The Curves indicate the illuminated area and the average illumination when the luminaire is at different distance.

C Range: 0 - 360DEG
C Interval: 30.0DEG
Test Speed: HIGH
Temperature:25.3℃
Operators:
Test Date:2025-03-17

γ Range: 0 - 180DEG
γ Interval: 1.0DEG
Test System:EVERFINE GO-2000B_V1 SYSTEM V2.00.488
Humidity:65.0%
Test Distance:6.360m [K=1.0000]
Remarks:

ISOLUX DIAGRAM

| | | |
|--|-----------------|------------------|
| Test:U:24.00V I:0.2365A P:5.676W PF:1.000 Freq:0Hz Lamp Flux:155.008x1 lm | | |
| NAME: SF15-24V-5050-70-SPI-RGBW(3000K)-W | TYPE: | WEIGHT: |
| SPEC.: | DIM.: Length=1m | SERIAL No.: |
| MFR.: OLympia lighting | SUR.: | Shielding Angle: |



C Range: 0 - 360DEG
C Interval: 30.0DEG
Test Speed: HIGH
Temperature: 25.3°C
Operators:
Test Date: 2025-03-17

γ Range: 0 - 180DEG
γ Interval: 1.0DEG
Test System: EVERFINE GO-2000B_V1 SYSTEM V2.00.488
Humidity: 65.0%
Test Distance: 6.360m [K=1.0000]
Remarks:

LED Avg.L Report

| | | |
|--|-----------------|------------------|
| Test:U:24.00V I:0.2365A P:5.676W PF:1.000 Freq:0Hz Lamp Flux:155.008x1 lm | | |
| NAME: SF15-24V-5050-70-SPI-RGBW(3000K)-W | TYPE: | WEIGHT: |
| SPEC.: | DIM.: Length=1m | SERIAL No.: |
| MFR.: OLympia lighting | SUR.: | Shielding Angle: |

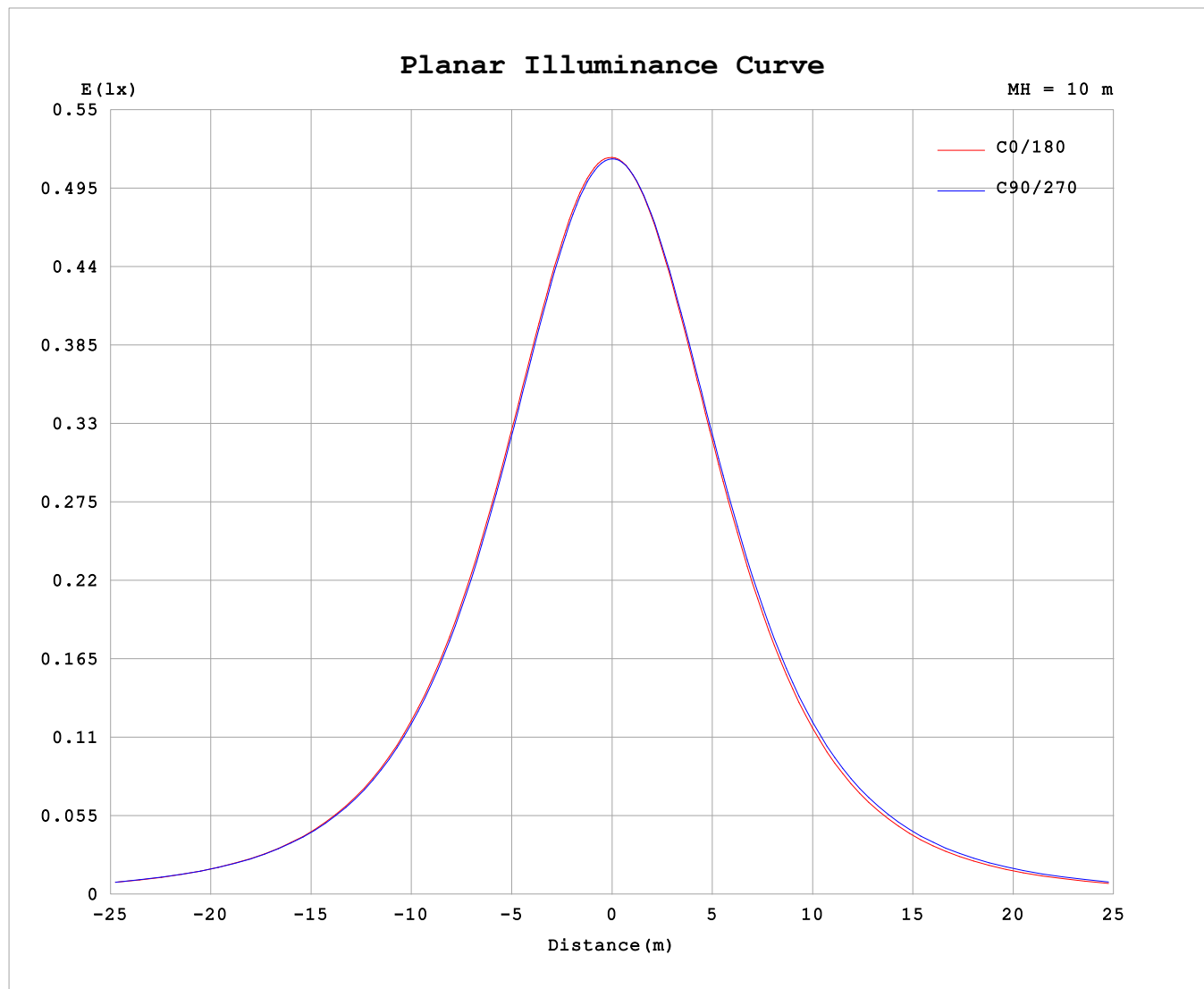
| AvgL | cd/m2 |
|------------------|-------|
| L_0~180 (65) av | 3688 |
| L_0~180 (75) av | 3342 |
| L_0~180 (85) av | 2905 |
| L_90~270 (65) av | 3894 |
| L_90~270 (75) av | 3796 |
| L_90~270 (85) av | 4198 |
| L_45 (65) av | 3795 |
| L_45 (75) av | 3545 |
| L_45 (85) av | 3366 |

Standard: GB/T 29293-2012

C Range: 0 - 360DEG
C Interval: 30.0DEG
Test Speed: HIGH
Temperature:25.3℃
Operators:
Test Date:2025-03-17

γ Range: 0 - 180DEG
γ Interval: 1.0DEG
Test System:EVERFINE GO-2000B_V1 SYSTEM V2.00.488
Humidity:65.0%
Test Distance:6.360m [K=1.0000]
Remarks:

Planar Illuminance Curve



C Range: 0 - 360DEG
C Interval: 30.0DEG
Test Speed: HIGH
Temperature: 25.3 °C
Operators:
Test Date: 2025-03-17

γ Range: 0 - 180DEG
 γ Interval: 1.0DEG
Test System: EVERFINE GO-2000B_V1 SYSTEM V2.00.488
Humidity: 65.0%
Test Distance: 6.360m [K=1.0000]
Remarks:

LUMINOUS DISTRIBUTION INTENSITY DATA

| | | |
|--|-----------------|------------------|
| Test:U:24.00V I:0.2365A P:5.676W PF:1.000 Freq:0Hz Lamp Flux:155.008x1 lm | | |
| NAME: SF15-24V-5050-70-SPI-RGBW(3000K)-W | TYPE: | WEIGHT: |
| SPEC.: | DIM.: Length=1m | SERIAL No.: |
| MFR.: Olym pia lighting | SUR.: | Shielding Angle: |

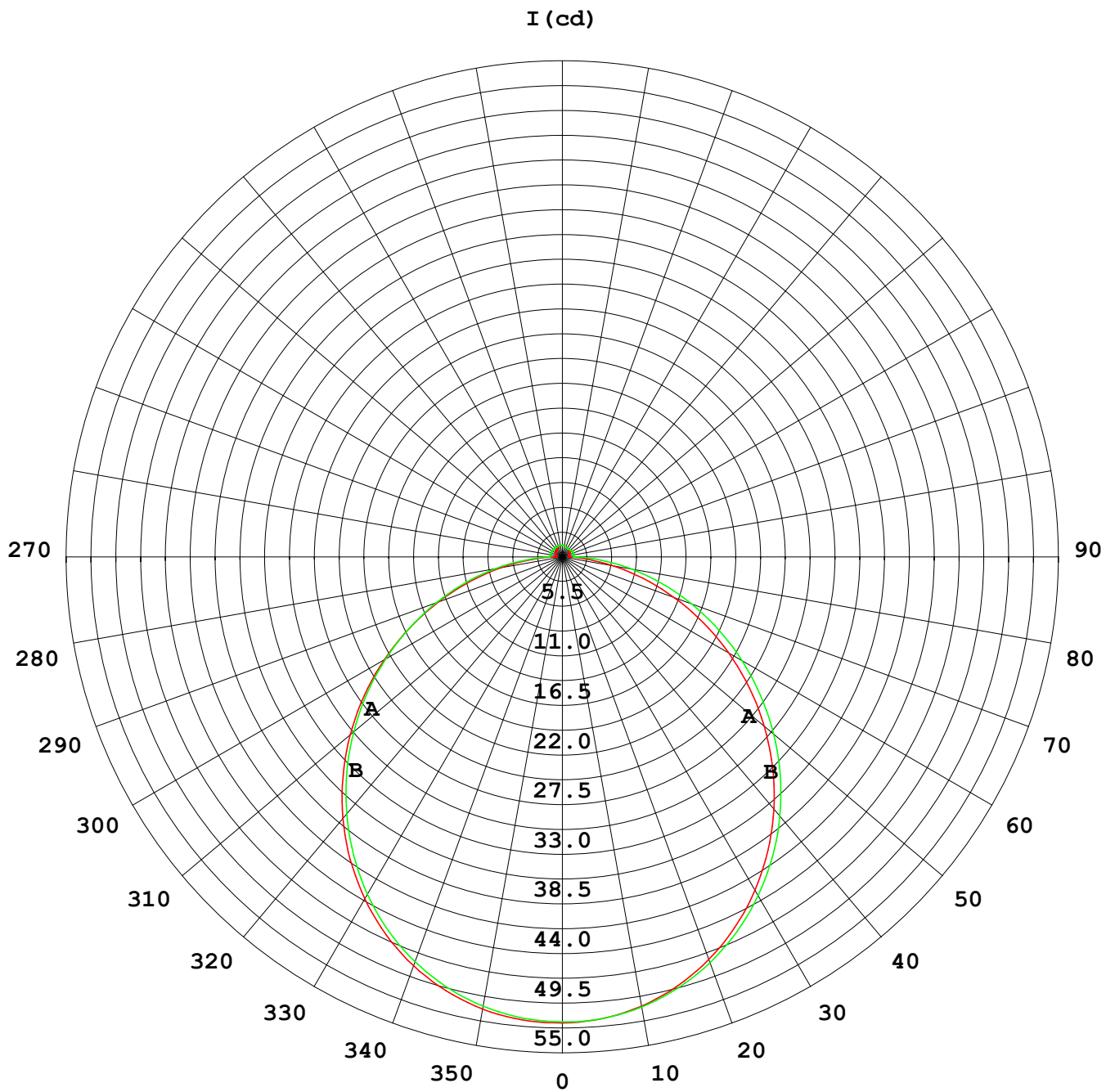
Table--1

UNIT: cd

| C (DEG) γ (DEG) | 0 | 30 | 60 | 90 | 120 | 150 | 180 | 210 | 240 | 270 | 300 | 330 | | | | | | | |
|--------------------|------|------|------|------|------|------|------|------|------|------|------|------|--|--|--|--|--|--|--|
| 0 | 51.6 | 51.6 | 51.6 | 51.6 | 51.6 | 51.6 | 51.6 | 51.6 | 51.6 | 51.6 | 51.6 | 51.6 | | | | | | | |
| 5 | 51.4 | 51.4 | 51.4 | 51.3 | 51.3 | 51.3 | 51.3 | 51.3 | 51.4 | 51.4 | 51.4 | 51.5 | | | | | | | |
| 10 | 50.8 | 50.8 | 50.7 | 50.6 | 50.6 | 50.5 | 50.5 | 50.5 | 50.6 | 50.7 | 50.8 | 50.9 | | | | | | | |
| 15 | 49.7 | 49.7 | 49.6 | 49.4 | 49.3 | 49.2 | 49.2 | 49.3 | 49.5 | 49.5 | 49.7 | 49.8 | | | | | | | |
| 20 | 48.2 | 48.2 | 48.0 | 47.8 | 47.7 | 47.5 | 47.4 | 47.5 | 47.8 | 47.9 | 48.1 | 48.2 | | | | | | | |
| 25 | 46.2 | 46.2 | 45.9 | 45.7 | 45.6 | 45.4 | 45.2 | 45.4 | 45.7 | 45.9 | 46.2 | 46.2 | | | | | | | |
| 30 | 43.7 | 43.8 | 43.5 | 43.2 | 43.1 | 42.8 | 42.6 | 42.8 | 43.3 | 43.4 | 43.7 | 43.8 | | | | | | | |
| 35 | 40.9 | 40.9 | 40.7 | 40.4 | 40.2 | 39.9 | 39.7 | 39.9 | 40.4 | 40.6 | 41.0 | 41.0 | | | | | | | |
| 40 | 37.8 | 37.8 | 37.5 | 37.2 | 37.0 | 36.7 | 36.4 | 36.7 | 37.3 | 37.5 | 37.8 | 37.9 | | | | | | | |
| 45 | 34.3 | 34.4 | 34.1 | 33.8 | 33.6 | 33.2 | 32.9 | 33.2 | 33.9 | 34.2 | 34.5 | 34.5 | | | | | | | |
| 50 | 30.6 | 30.7 | 30.5 | 30.2 | 29.9 | 29.4 | 29.2 | 29.5 | 30.2 | 30.6 | 30.9 | 30.8 | | | | | | | |
| 55 | 26.8 | 26.9 | 26.7 | 26.5 | 26.1 | 25.5 | 25.3 | 25.6 | 26.4 | 26.9 | 27.1 | 26.9 | | | | | | | |
| 60 | 22.7 | 22.9 | 22.8 | 22.6 | 22.2 | 21.5 | 21.3 | 21.6 | 22.5 | 23.0 | 23.2 | 23.0 | | | | | | | |
| 65 | 18.7 | 18.8 | 18.8 | 18.7 | 18.2 | 17.5 | 17.2 | 17.5 | 18.5 | 19.1 | 19.2 | 18.9 | | | | | | | |
| 70 | 14.6 | 14.8 | 14.9 | 14.9 | 14.3 | 13.5 | 13.2 | 13.5 | 14.5 | 15.2 | 15.2 | 14.9 | | | | | | | |
| 75 | 10.6 | 10.8 | 11.0 | 11.1 | 10.4 | 9.63 | 9.29 | 9.64 | 10.6 | 11.5 | 11.3 | 11.0 | | | | | | | |
| 80 | 6.82 | 7.06 | 7.33 | 7.53 | 6.76 | 5.93 | 5.61 | 5.95 | 6.90 | 7.83 | 7.55 | 7.21 | | | | | | | |
| 85 | 3.35 | 3.58 | 3.85 | 4.05 | 3.32 | 2.68 | 2.47 | 2.66 | 3.39 | 4.36 | 3.99 | 3.69 | | | | | | | |
| 90 | 0.97 | 1.13 | 1.29 | 1.39 | 1.40 | 1.08 | 0.85 | 0.92 | 1.02 | 1.34 | 1.07 | 1.07 | | | | | | | |
| 95 | 0.71 | 0.88 | 1.15 | 1.39 | 1.32 | 1.01 | 0.75 | 0.77 | 0.92 | 1.24 | 0.77 | 0.70 | | | | | | | |
| 100 | 0.71 | 0.89 | 1.14 | 1.38 | 1.31 | 1.02 | 0.76 | 0.76 | 0.94 | 1.27 | 0.79 | 0.68 | | | | | | | |
| 105 | 0.74 | 0.91 | 1.15 | 1.37 | 1.31 | 1.04 | 0.78 | 0.77 | 0.96 | 1.29 | 0.83 | 0.69 | | | | | | | |
| 110 | 0.78 | 0.93 | 1.16 | 1.35 | 1.31 | 1.05 | 0.81 | 0.80 | 0.99 | 1.29 | 0.86 | 0.71 | | | | | | | |
| 115 | 0.83 | 0.97 | 1.18 | 1.34 | 1.31 | 1.08 | 0.85 | 0.83 | 1.01 | 1.28 | 0.88 | 0.77 | | | | | | | |
| 120 | 0.87 | 1.00 | 1.19 | 1.32 | 1.31 | 1.11 | 0.89 | 0.88 | 1.03 | 1.26 | 0.90 | 0.80 | | | | | | | |
| 125 | 0.91 | 1.04 | 1.19 | 1.31 | 1.31 | 1.13 | 0.92 | 0.91 | 1.03 | 1.21 | 0.92 | 0.84 | | | | | | | |
| 130 | 0.96 | 1.07 | 1.19 | 1.29 | 1.29 | 1.15 | 0.96 | 0.95 | 1.05 | 1.18 | 0.95 | 0.88 | | | | | | | |
| 135 | 1.00 | 1.09 | 1.20 | 1.29 | 1.29 | 1.17 | 1.01 | 0.99 | 1.07 | 1.15 | 0.97 | 0.88 | | | | | | | |
| 140 | 1.04 | 1.12 | 1.21 | 1.29 | 1.28 | 1.19 | 1.04 | 1.03 | 1.08 | 1.13 | 1.00 | 0.91 | | | | | | | |
| 145 | 1.07 | 1.15 | 1.22 | 1.29 | 1.28 | 1.20 | 1.08 | 1.07 | 1.10 | 1.13 | 1.03 | 0.96 | | | | | | | |
| 150 | 1.11 | 1.17 | 1.23 | 1.29 | 1.28 | 1.22 | 1.12 | 1.11 | 1.13 | 1.12 | 1.06 | 1.00 | | | | | | | |
| 155 | 1.15 | 1.20 | 1.25 | 1.29 | 1.28 | 1.24 | 1.17 | 1.16 | 1.17 | 1.13 | 1.14 | 1.05 | | | | | | | |
| 160 | 1.19 | 1.22 | 1.26 | 1.29 | 1.28 | 1.26 | 1.21 | 1.20 | 1.21 | 1.16 | 1.17 | 1.10 | | | | | | | |
| 165 | 1.23 | 1.25 | 1.27 | 1.29 | 1.28 | 1.28 | 1.24 | 1.23 | 1.25 | 1.21 | 1.21 | 1.15 | | | | | | | |
| 170 | 1.25 | 1.28 | 1.27 | 1.29 | 1.28 | 1.30 | 1.27 | 1.26 | 1.29 | 1.26 | 1.26 | 1.22 | | | | | | | |
| 175 | 1.27 | 1.29 | 1.28 | 1.31 | 1.29 | 1.30 | 1.28 | 1.28 | 1.30 | 1.29 | 1.30 | 1.25 | | | | | | | |
| 180 | 1.28 | 1.29 | 1.30 | 1.31 | 1.30 | 1.30 | 1.28 | 1.29 | 1.30 | 1.31 | 1.31 | 1.29 | | | | | | | |

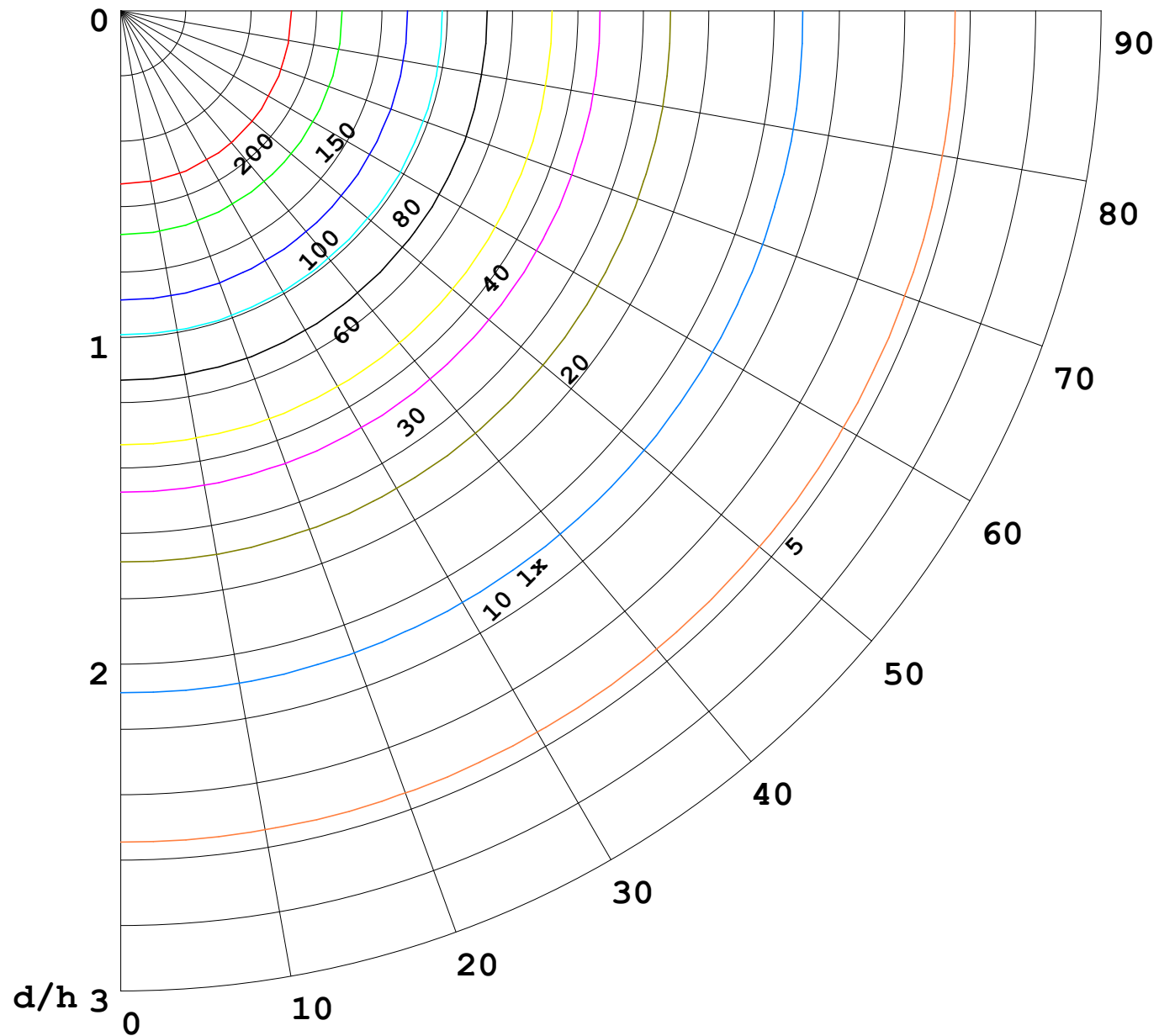
C Range: 0 - 360DEG
C Interval: 30.0DEG
Test Speed: HIGH
Temperature:25.3℃
Operators:
Test Date:2025-03-17

γ Range: 0 - 180DEG
γ Interval: 1.0DEG
Test System:EVERFINE GO-2000B_V1 SYSTEM V2.00.488
Humidity:65.0%
Test Distance:6.360m [K=1.0000]
Remarks:



1000 lm

$\kappa = 1$



F = 1000 lm
 K = 0.7
 Hcc = 0.8 m
 Hfc = 0.0 m
 Eave = 100 lx

| | Pcc | Pw | Pfc |
|------|-----|----|-----|
| ———— | 70 | 50 | 30 |
| ———— | 50 | 30 | 20 |

