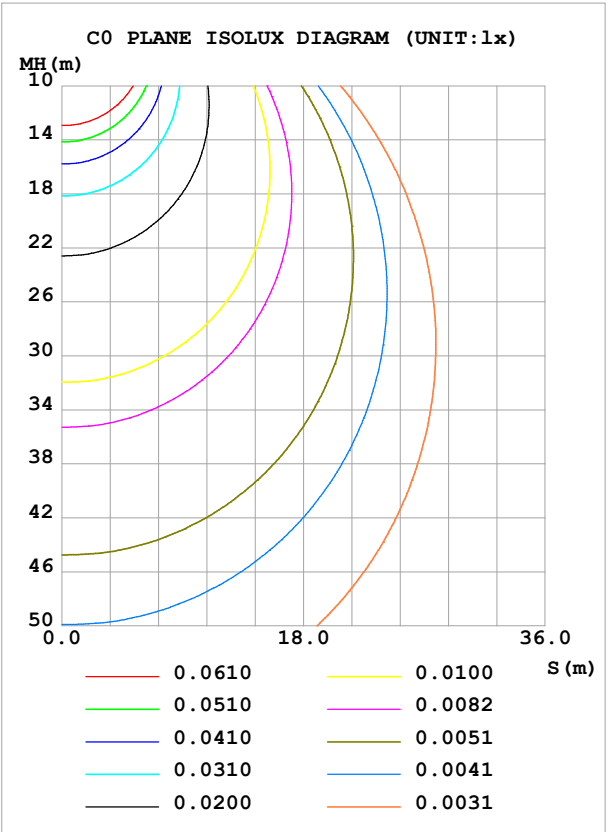
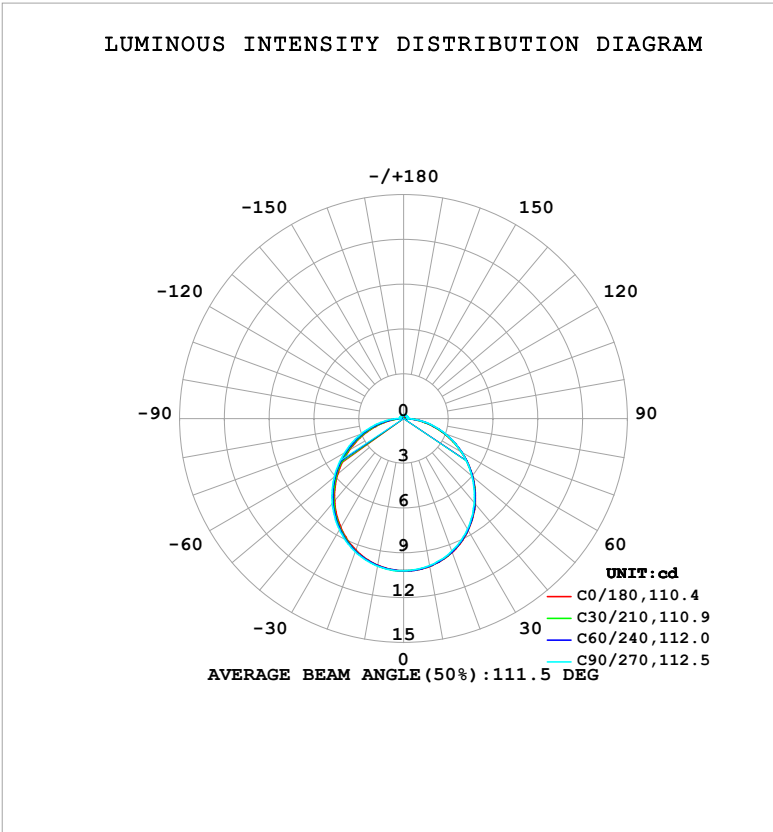


LUMINAIRE PHOTOMETRIC TEST REPORT

Test:U:24.00V I:0.4559A P:10.94W PF:1.000 Freq:0Hz Lamp Flux:30.6359x1 lm		
NAME: SF15-24V-5050-70-SPI-RGBW(3000K)-B	TYPE:	WEIGHT:
SPEC.:	DIM.: Length=1m	SERIAL No.:
MFR.: OLympia lighting	SUR.:	Shielding Angle:

DATA OF LAMP		PHOTOMETRIC DATA				Eff: 2.80 lm/W
MODEL	5050	I _{max} (cd)	10.20	S/MH(C0/180)	1.23	
NOMINAL POWER(W)		LOR(%)	100.0	S/MH(C90/270)	1.25	
RATED VOLTAGE(V)	24	TOTAL FLUX(lm)	30.636	η UP,DN(C0-180)	2.3,47.8	
NOMINAL FLUX(lm)	30.6359	CIE CLASS	DIRECT	η UP,DN(C180-360)	2.0,47.8	
LAMPS INSIDE	1	η up (%)	4.3	CIBSE SHR NOM	1.25	
TEST VOLTAGE(V)		η down (%)	95.7	CIBSE SHR MAX	1.35	



C Range: 0 - 360DEG
 C Interval: 30.0DEG
 Test Speed: HIGH
 Temperature:25.3℃
 Operators:
 Test Date:2025-03-18

γ Range: 0 - 180DEG
 γ Interval: 1.0DEG
 Test System:EVERFINE GO-2000B_V1 SYSTEM V2.00.488
 Humidity:65.0%
 Test Distance:6.360m [K=1.0000]
 Remarks:

ZONAL FLUX DIAGRAM

ZONAL FLUX DIAGRAM:

γ	C0	C45	C90	C135	C180	C225	C270	C315	γ	Φ zone	Φ total	%lum, lamp
10	10.06	10.04	10.00	9.996	9.974	10.01	10.04	10.05	0- 10	0.9654	0.9654	3.15,3.15
20	9.537	9.509	9.454	9.426	9.372	9.438	9.496	9.530	10- 20	2.763	3.729	12.2,12.2
30	8.653	8.621	8.565	8.504	8.426	8.530	8.607	8.651	20- 30	4.175	7.903	25.8,25.8
40	7.468	7.432	7.369	7.291	7.200	7.329	7.438	7.481	30- 40	5.008	12.91	42.1,42.1
50	6.056	6.027	5.972	5.867	5.755	5.917	6.061	6.084	40- 50	5.165	18.08	59,59
60	4.485	4.479	4.482	4.315	4.187	4.374	4.568	4.550	50- 60	4.657	22.73	74.2,74.2
70	2.861	2.905	2.967	2.732	2.581	2.786	3.030	2.964	60- 70	3.601	26.33	86,86
80	1.325	1.403	1.523	1.236	1.082	1.277	1.569	1.446	70- 80	2.205	28.54	93.2,93.2
90	0.1937	0.2325	0.2945	0.2325	0.1499	0.1906	0.2894	0.2080	80- 90	0.7713	29.31	95.7,95.7
100	0.1470	0.2035	0.2771	0.2223	0.1528	0.1746	0.2685	0.1588	90-100	0.2183	29.53	96.4,96.4
110	0.1470	0.2107	0.2656	0.2267	0.1643	0.1789	0.2685	0.1632	100-110	0.2096	29.74	97.1,97.1
120	0.1614	0.2179	0.2598	0.2310	0.1787	0.1861	0.2627	0.1689	110-120	0.2015	29.94	97.7,97.7
130	0.1759	0.2237	0.2598	0.2382	0.1932	0.1962	0.2454	0.1790	120-130	0.1876	30.13	98.3,98.3
140	0.1960	0.2338	0.2627	0.2425	0.2105	0.2063	0.2339	0.1877	130-140	0.1669	30.29	98.9,98.9
150	0.2047	0.2425	0.2627	0.2454	0.2306	0.2208	0.2281	0.2036	140-150	0.1410	30.44	99.3,99.3
160	0.2248	0.2497	0.2598	0.2483	0.2422	0.2338	0.2281	0.2238	150-160	0.1081	30.54	99.7,99.7
170	0.2392	0.2497	0.2541	0.2483	0.2422	0.2424	0.2396	0.2411	160-170	0.0685	30.61	99.9,99.9
180	0.2450	0.2497	0.2541	0.2483	0.2422	0.2468	0.2483	0.2469	170-180	0.0235	30.64	100,100
DEG	LUMINOUS INTENSITY:cd									UNIT:lm		

Conical surface Flux(90deg): 15.517 lm

%lum = 50.6%

%lamp = 50.6%

Conical surface Flux(130deg): 24.692 lm

%lum = 80.6%

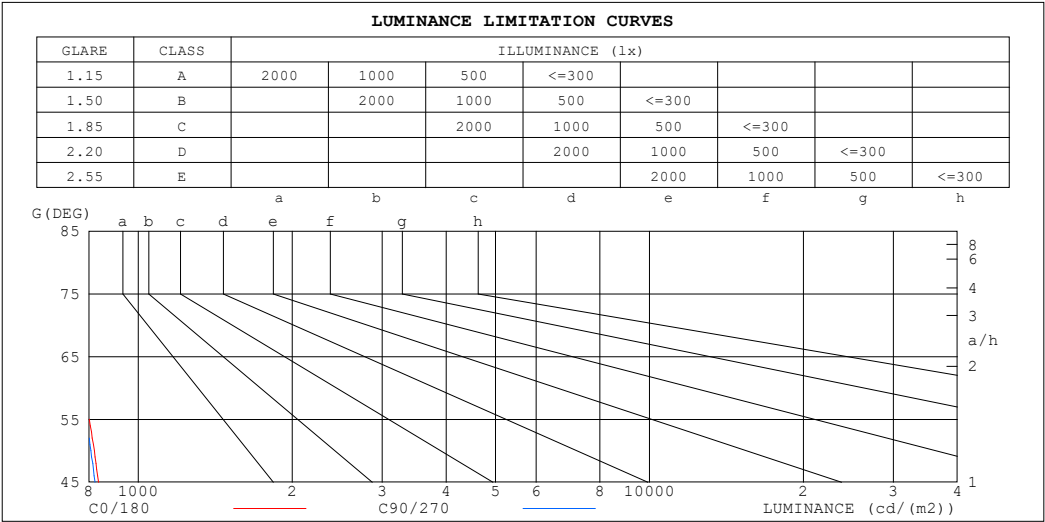
%lamp = 80.6%

C Range: 0 - 360DEG
 C Interval: 30.0DEG
 Test Speed: HIGH
 Temperature:25.3℃
 Operators:
 Test Date:2025-03-18

γ Range: 0 - 180DEG
 γ Interval: 1.0DEG
 Test System:EVERFINE GO-2000B_V1 SYSTEM V2.00.488
 Humidity:65.0%
 Test Distance:6.360m [K=1.0000]
 Remarks:

LUMINANCE LIMITATION CURVES

Test:U:24.00V I:0.4559A P:10.94W PF:1.000 Freq:0Hz Lamp Flux:30.6359x1 lm		
NAME: SF15-24V-5050-70-SPI-RGBW(3000K)-B	TYPE:	WEIGHT:
SPEC.:	DIM.: Length=1m	SERIAL No.:
MFR.: OLympia lighting	SUR.:	Shielding Angle:



LUMINANCE cd/(m2)		
G (DEG)	C0/180	C90/270
85	644	814
80	664	763
75	698	751
70	728	754
65	756	766
60	781	779
55	802	794
50	820	808
45	836	823

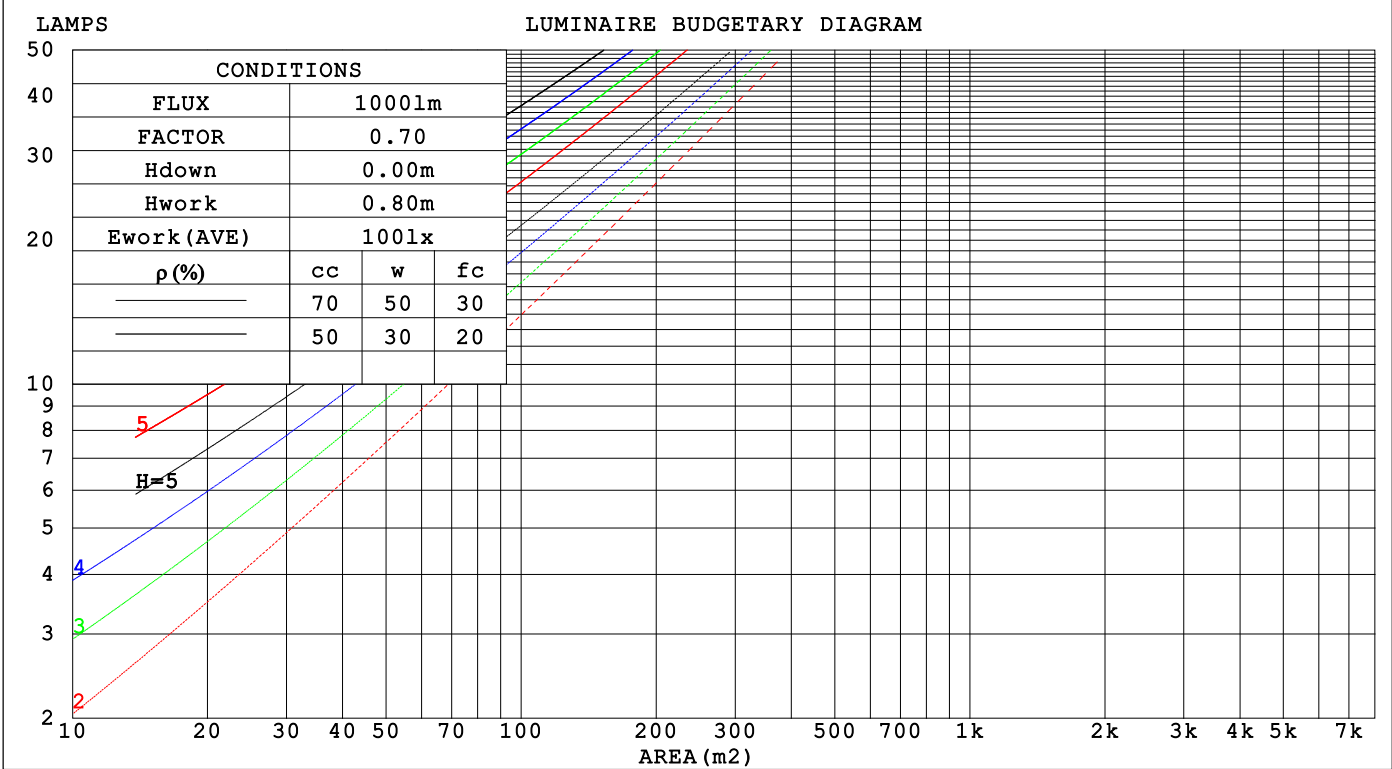
C Range: 0 - 360DEG
C Interval: 30.0DEG
Test Speed: HIGH
Temperature:25.3℃
Operators:
Test Date:2025-03-18

γ Range: 0 - 180DEG
γ Interval: 1.0DEG
Test System:EVERFINE GO-2000B_V1 SYSTEM V2.00.488
Humidity:65.0%
Test Distance:6.360m [K=1.0000]
Remarks:

CU AND LUMINAIRE BUDGETARY ESTIMATE DIAGRAM

Test:U:24.00V I:0.4559A P:10.94W PF:1.000 Freq:0Hz		
Lamp Flux:30.6359x1 lm		
NAME: SF15-24V-5050-70-SPI-RGBW(3000K)-B	TYPE:	WEIGHT:
SPEC.:	DIM.: Length=1m	SERIAL No.:
MFR.: OLYMPIA lighting	SUR.:	Shielding Angle:

pcc	80%			70%			50%			30%			10%			0
pw	50%	30%	10%	50%	30%	10%	50%	30%	10%	50%	30%	10%	50%	30%	10%	0
pfc	20%			20%			20%			20%			20%			0
RCR	RCR:Room Cavity Ratio			Coefficients of Utilization(CU)												
0.0	1.18	1.18	1.18	1.15	1.15	1.15	1.09	1.09	1.09	1.03	1.03	1.03	.98	.98	.98	.96
1.0	1.02	.98	.94	.90	.96	.92	.95	.91	.88	.90	.87	.85	.86	.84	.82	.79
2.0	.89	.82	.76	.87	.80	.75	.83	.77	.73	.79	.74	.70	.75	.71	.68	.66
3.0	.78	.70	.63	.76	.69	.62	.73	.66	.61	.69	.64	.59	.66	.62	.58	.55
4.0	.69	.60	.53	.67	.59	.53	.64	.57	.52	.62	.55	.51	.59	.54	.49	.47
5.0	.62	.53	.46	.60	.52	.46	.58	.50	.45	.55	.49	.44	.53	.47	.43	.41
6.0	.56	.47	.40	.54	.46	.40	.52	.45	.39	.50	.43	.38	.48	.42	.38	.36
7.0	.50	.42	.35	.49	.41	.35	.47	.40	.35	.46	.39	.34	.44	.38	.33	.31
8.0	.46	.37	.31	.45	.37	.31	.43	.36	.31	.42	.35	.30	.40	.34	.30	.28
9.0	.42	.34	.28	.41	.33	.28	.40	.33	.28	.38	.32	.27	.37	.31	.27	.25
10.0	.39	.31	.26	.38	.31	.25	.37	.30	.25	.36	.29	.25	.34	.29	.25	.23



C Range: 0 - 360DEG

C Interval: 30.0DEG

Test Speed: HIGH

Temperature:25.3℃

Operators:

Test Date:2025-03-18

γ Range: 0 - 180DEG

γ Interval: 1.0DEG

Test System:EVERFINE GO-2000B_V1 SYSTEM V2.00.488

Humidity:65.0%

Test Distance:6.360m [K=1.0000]

Remarks:

WEC AND CCEC

Test:U:24.00V I:0.4559A P:10.94W PF:1.000 Freq:0Hz Lamp Flux:30.6359x1 lm		
NAME: SF15-24V-5050-70-SPI-RGBW(3000K)-B	TYPE:	WEIGHT:
SPEC.:	DIM.: Length=1m	SERIAL No.:
MFR.: OLympia lighting	SUR.:	Shielding Angle:

pcc	80%			70%			50%			30%			10%			0														
pw	50%	30%	10%	50%	30%	10%	50%	30%	10%	50%	30%	10%	50%	30%	10%	0														
pfc	20%			20%			20%			20%			20%			0														
RCR	RCR:Room Cavity Ratio															Wall Exitance Coefficients(WEC)														
0.0																														
1.0	.317	.180	.057	.309	.176	.056	.293	.168	.054	.278	.161	.052	.265	.154	.050															
2.0	.295	.162	.050	.287	.158	.049	.273	.152	.047	.260	.146	.046	.248	.141	.044															
3.0	.271	.144	.043	.265	.142	.043	.252	.137	.042	.241	.132	.040	.230	.127	.039															
4.0	.250	.130	.038	.244	.128	.038	.233	.123	.037	.222	.119	.036	.213	.115	.035															
5.0	.230	.117	.034	.225	.116	.034	.215	.112	.033	.206	.109	.032	.197	.105	.032															
6.0	.213	.107	.031	.209	.105	.030	.200	.102	.030	.191	.099	.029	.183	.097	.029															
7.0	.198	.098	.028	.194	.097	.028	.186	.094	.027	.178	.091	.027	.171	.089	.026															
8.0	.185	.090	.025	.181	.089	.025	.174	.087	.025	.167	.085	.024	.161	.082	.024															
9.0	.173	.084	.023	.170	.083	.023	.163	.081	.023	.157	.079	.023	.151	.077	.022															
10.0	.163	.078	.022	.160	.077	.022	.154	.075	.021	.148	.073	.021	.143	.072	.021															

pcc	80%			70%			50%			30%			10%			0
pw	50%	30%	10%	50%	30%	10%	50%	30%	10%	50%	30%	10%	50%	30%	10%	0
pfc	20%			20%			20%			20%			20%			0
RCR	RCR:Room Cavity Ratio						Ceiling Cavity Exitance Coefficients (CCEC)									
0.0	.223	.223	.223	.191	.191	.191	.130	.130	.130	.075	.075	.075	.024	.024	.024	
1.0	.214	.189	.167	.183	.162	.144	.125	.112	.099	.072	.065	.058	.023	.021	.019	
2.0	.206	.165	.131	.177	.142	.113	.121	.098	.079	.070	.057	.046	.022	.019	.015	
3.0	.198	.148	.108	.170	.128	.093	.117	.089	.066	.067	.052	.039	.022	.017	.013	
4.0	.191	.135	.092	.164	.116	.080	.113	.081	.056	.065	.048	.033	.021	.015	.011	
5.0	.183	.124	.081	.157	.108	.071	.108	.075	.050	.063	.044	.030	.020	.014	.010	
6.0	.176	.116	.073	.151	.101	.064	.104	.070	.045	.061	.041	.027	.020	.014	.009	
7.0	.169	.109	.067	.146	.095	.059	.101	.066	.042	.058	.039	.025	.019	.013	.008	
8.0	.163	.104	.063	.140	.090	.055	.097	.063	.039	.056	.037	.023	.018	.012	.008	
9.0	.157	.099	.059	.135	.086	.052	.094	.060	.037	.055	.036	.022	.018	.012	.007	
10.0	.151	.094	.057	.130	.082	.050	.090	.058	.035	.053	.034	.021	.017	.011	.007	

C Range: 0 - 360DEG
C Interval: 30.0DEG
Test Speed: HIGH
Temperature:25.3℃
Operators:
Test Date:2025-03-18

γ Range: 0 - 180DEG
γ Interval: 1.0DEG
Test System:EVERFINE GO-2000B_V1 SYSTEM V2.00.488
Humidity:65.0%
Test Distance:6.360m [K=1.0000]
Remarks:

UGR(Unified Glare Rating) Table

Test:U:24.00V I:0.4559A P:10.94W PF:1.000 Freq:0Hz Lamp Flux:30.6359x1 lm										
NAME: SF15-24V-5050-70-SPI-RGBW(3000K)-B					TYPE:			WEIGHT:		
SPEC.:					DIM.: Length=1m			SERIAL No.:		
MFR.: OLympia lighting					SUR.:			Shielding Angle:		
ceiling/cavity	0.7	0.7	0.5	0.5	0.3	0.7	0.7	0.5	0.5	0.3
walls	0.5	0.3	0.5	0.3	0.3	0.5	0.3	0.5	0.3	0.3
working plane	0.2	0.2	0.2	0.2	0.2	0.2	0.2	0.2	0.2	0.2
Room dimensions	Viewed crosswise					Viewed endwise				
x = 2H y = 2H	22.8	24.3	23.1	24.5	24.8	22.8	24.3	23.1	24.6	24.8
3H	24.4	25.7	24.7	26.0	26.4	24.4	25.8	24.8	26.1	26.4
4H	25.0	26.3	25.4	26.6	27.0	25.2	26.5	25.5	26.8	27.1
6H	25.5	26.7	25.9	27.1	27.5	25.8	27.0	26.2	27.3	27.7
8H	25.7	26.9	26.1	27.2	27.6	26.0	27.2	26.4	27.6	27.9
12H	25.8	27.0	26.3	27.3	27.7	26.2	27.3	26.6	27.7	28.1
4H 2H	23.4	24.7	23.8	25.0	25.4	23.4	24.7	23.8	25.0	25.4
3H	25.2	26.3	25.6	26.7	27.1	25.3	26.4	25.7	26.8	27.1
4H	26.0	27.0	26.4	27.4	27.8	26.1	27.1	26.6	27.5	28.0
6H	26.6	27.5	27.1	27.9	28.4	26.9	27.8	27.3	28.2	28.7
8H	26.8	27.7	27.3	28.1	28.6	27.2	28.0	27.7	28.5	29.0
12H	27.0	27.8	27.5	28.3	28.8	27.5	28.2	27.9	28.7	29.2
8H 4H	26.3	27.1	26.7	27.6	28.0	26.4	27.3	26.9	27.7	28.2
6H	27.1	27.8	27.6	28.3	28.8	27.3	28.1	27.9	28.5	29.1
8H	27.4	28.1	28.0	28.6	29.1	27.8	28.4	28.3	28.9	29.4
12H	27.7	28.3	28.3	28.8	29.3	28.2	28.7	28.7	29.2	29.8
12H 4H	26.3	27.1	26.8	27.5	28.0	26.4	27.2	26.9	27.7	28.2
6H	27.2	27.8	27.7	28.3	28.8	27.4	28.0	27.9	28.6	29.1
8H	27.6	28.1	28.1	28.6	29.2	27.9	28.4	28.4	29.0	29.5
Variations with the observer position at spacings(CIE Pub.117):										
S = 1.0H	+ 0.1 / - 0.2					+ 0.1 / - 0.2				
1.5H	+ 0.2 / - 0.3					+ 0.2 / - 0.3				
2.0H	+ 0.1 / - 0.3					+ 0.1 / - 0.3				

CIE Pub.117, 30.64 lm Total Lamp Luminous Flux Correct (8log(F/F0) = -12.1)
Area: 0.0115 m2

C Range: 0 - 360DEG
C Interval: 30.0DEG
Test Speed: HIGH
Temperature:25.3℃
Operators:
Test Date:2025-03-18

γ Range: 0 - 180DEG
γ Interval: 1.0DEG
Test System:EVERFINE GO-2000B_V1 SYSTEM V2.00.488
Humidity:65.0%
Test Distance:6.360m [K=1.0000]
Remarks:

UTILIZATION FACTORS TABLE

Test:U:24.00V I:0.4559A P:10.94W PF:1.000 Freq:0Hz Lamp Flux:30.6359x1 lm		
NAME: SF15-24V-5050-70-SPI-RGBW(3000K)-B	TYPE:	WEIGHT:
SPEC.:	DIM.: Length=1m	SERIAL No.:
MFR.: OLympia lighting	SUR.:	Shielding Angle:

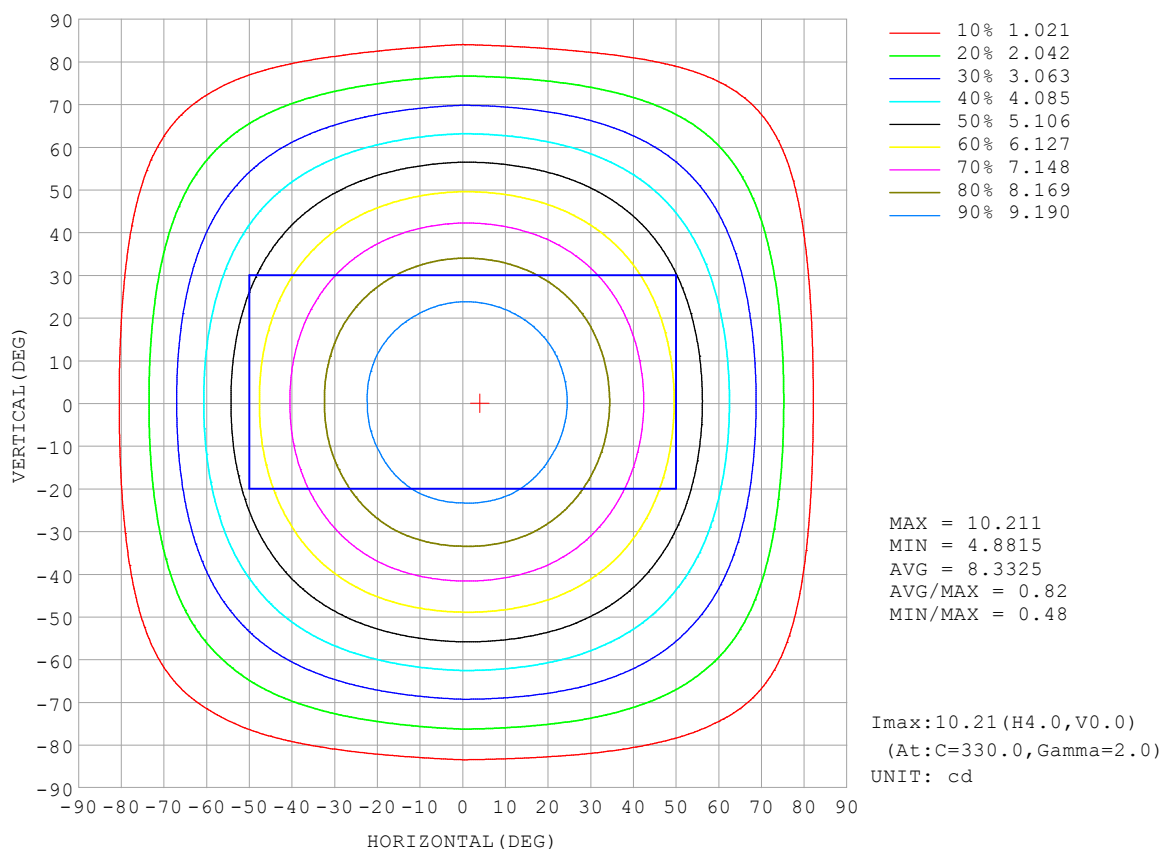
REFLECTANCE										
Ceiling	0.8	0.8	0.8	0.7	0.7	0.7	0.5	0.5	0.5	0
Walls	0.7	0.5	0.3	0.7	0.5	0.3	0.7	0.5	0.3	0
Working plane	0.2	0.2	0.2	0.2	0.2	0.2	0.2	0.2	0.2	0
ROOM INDEX	UTILIZATION FACTORS (PERCENT) $k(RI) \times RCR = 5$									
$k = 0.60$	56	44	37	55	44	37	54	43	37	30
0.80	66	54	47	65	54	46	63	53	46	39
1.00	74	63	55	73	62	55	70	63	54	47
1.25	81	70	63	80	70	63	76	68	62	54
1.50	86	76	69	84	75	68	81	73	67	59
2.00	93	84	78	91	83	77	87	80	75	66
2.50	97	89	83	95	87	82	90	84	79	70
3.00	100	93	88	98	91	86	93	88	84	74
4.00	105	99	94	102	96	92	97	92	89	79
5.00	107	102	98	104	100	96	99	95	92	82
ROOM INDEX	UF (total)									Direct
According to DIN EN 13032-2 2004			Suspended					SHRNOM = 1.25		

C Range: 0 - 360DEG
 C Interval: 30.0DEG
 Test Speed: HIGH
 Temperature: 25.3 °C
 Operators:
 Test Date: 2025-03-18

γ Range: 0 - 180DEG
 γ Interval: 1.0DEG
 Test System: EVERFINE GO-2000B_V1 SYSTEM V2.00.488
 Humidity: 65.0%
 Test Distance: 6.360m [K=1.0000]
 Remarks:

ISOCANDELA DIAGRAM

Test:U:24.00V I:0.4559A P:10.94W PF:1.000 Freq:0Hz Lamp Flux:30.6359x1 lm		
NAME: SF15-24V-5050-70-SPI-RGBW(3000K)-B	TYPE:	WEIGHT:
SPEC.:	DIM.: Length=1m	SERIAL No.:
MFR.: OLympia lighting	SUR.:	Shielding Angle:

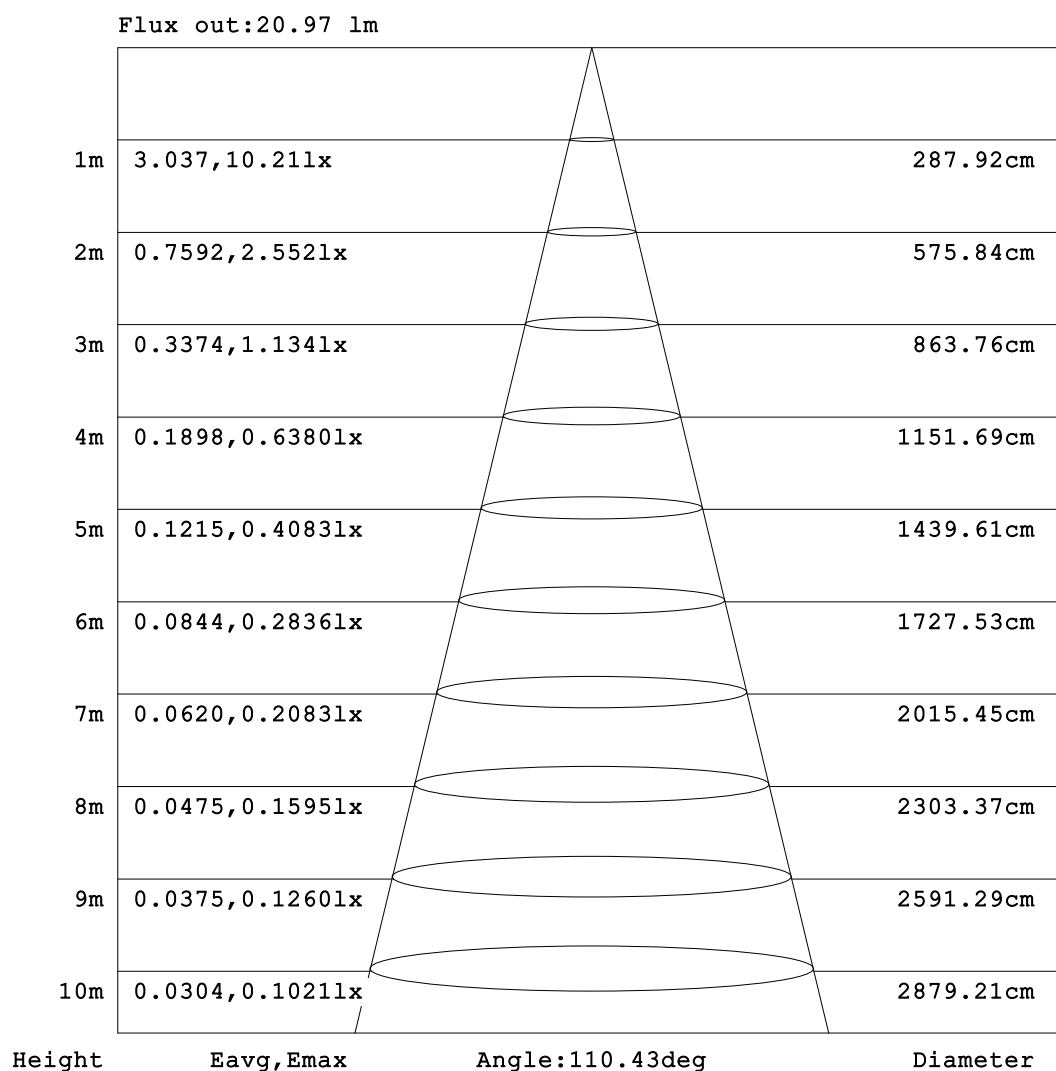


C Range: 0 - 360DEG
C Interval: 30.0DEG
Test Speed: HIGH
Temperature:25.3℃
Operators:
Test Date:2025-03-18

γ Range: 0 - 180DEG
γ Interval: 1.0DEG
Test System:EVERFINE GO-2000B_V1 SYSTEM V2.00.488
Humidity:65.0%
Test Distance:6.360m [K=1.0000]
Remarks:

AAI Figure

Test:U:24.00V I:0.4559A P:10.94W PF:1.000 Freq:0Hz Lamp Flux:30.6359x1 lm		
NAME: SF15-24V-5050-70-SPI-RGBW(3000K)-B	TYPE:	WEIGHT:
SPEC.:	DIM.: Length=1m	SERIAL No.:
MFR.: OLympia lighting	SUR.:	Shielding Angle:



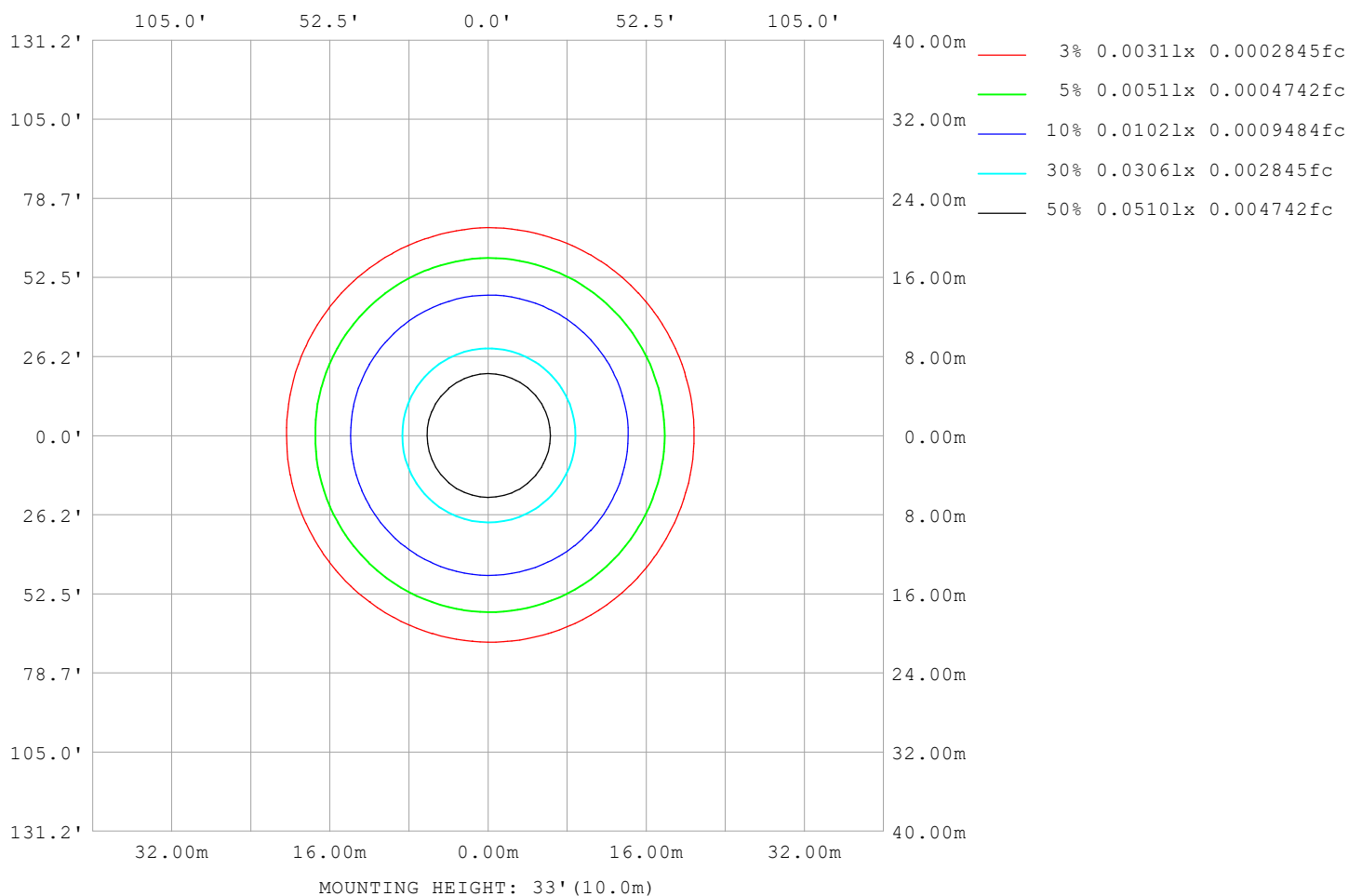
Note:The Curves indicate the illuminated area and the average illumination when the luminaire is at different distance.

C Range: 0 - 360DEG
C Interval: 30.0DEG
Test Speed: HIGH
Temperature:25.3℃
Operators:
Test Date:2025-03-18

γ Range: 0 - 180DEG
γ Interval: 1.0DEG
Test System:EVERFINE GO-2000B_V1 SYSTEM V2.00.488
Humidity:65.0%
Test Distance:6.360m [K=1.0000]
Remarks:

ISOLUX DIAGRAM

Test:U:24.00V I:0.4559A P:10.94W PF:1.000 Freq:0Hz Lamp Flux:30.6359x1 lm		
NAME: SF15-24V-5050-70-SPI-RGBW(3000K)-B	TYPE:	WEIGHT:
SPEC.:	DIM.: Length=1m	SERIAL No.:
MFR.: OLympia lighting	SUR.:	Shielding Angle:



C Range: 0 - 360DEG
C Interval: 30.0DEG
Test Speed: HIGH
Temperature: 25.3°C
Operators:
Test Date: 2025-03-18

γ Range: 0 - 180DEG
γ Interval: 1.0DEG
Test System: EVERFINE GO-2000B_V1 SYSTEM V2.00.488
Humidity: 65.0%
Test Distance: 6.360m [K=1.0000]
Remarks:

LED Avg.L Report

Test:U:24.00V I:0.4559A P:10.94W PF:1.000 Freq:0Hz Lamp Flux:30.6359x1 lm		
NAME: SF15-24V-5050-70-SPI-RGBW(3000K)-B	TYPE:	WEIGHT:
SPEC.:	DIM.: Length=1m	SERIAL No.:
MFR.: OLympia lighting	SUR.:	Shielding Angle:

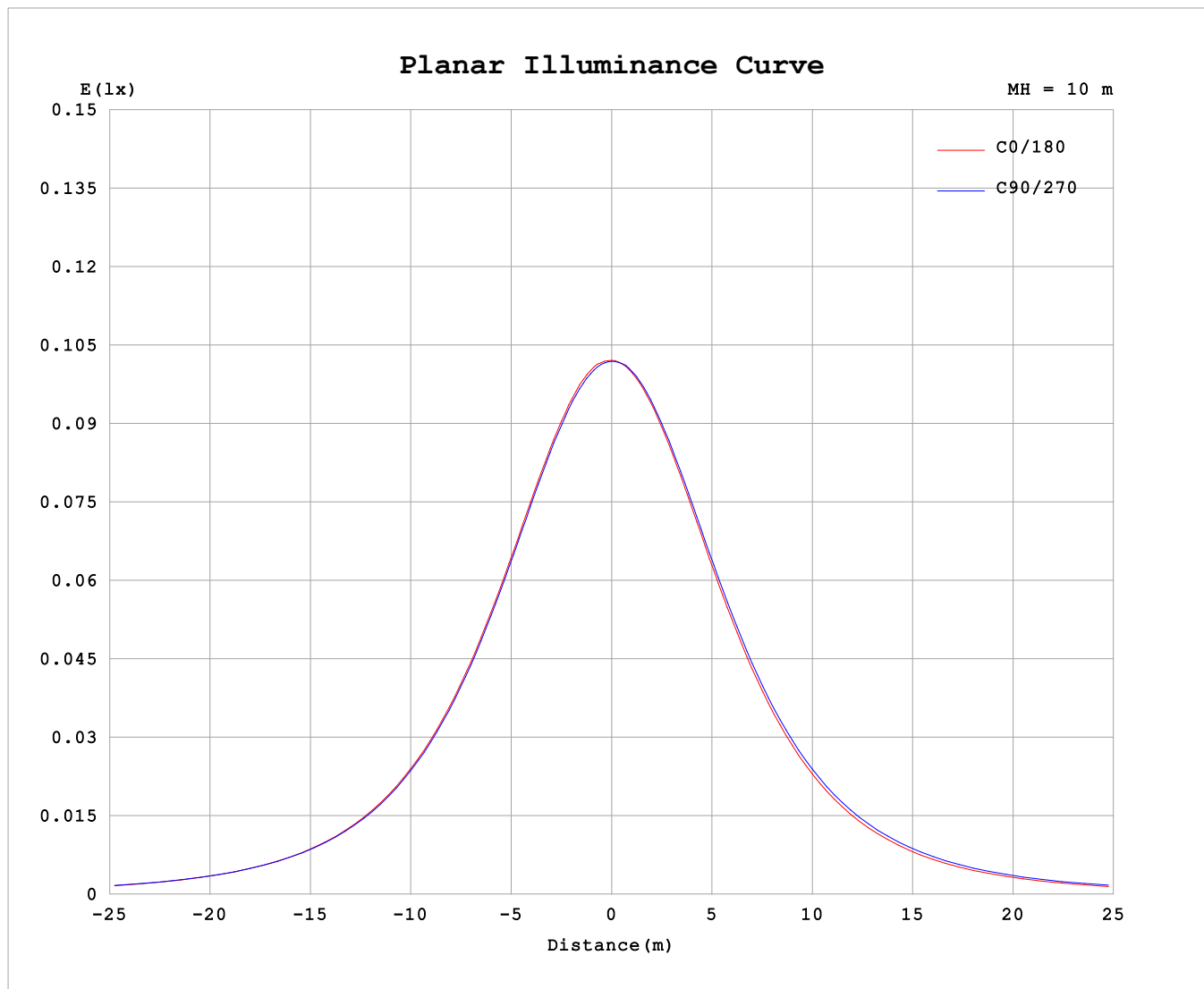
AvgL	cd/m2
L_0~180 (65) av	725
L_0~180 (75) av	652
L_0~180 (85) av	551
L_90~270 (65) av	774
L_90~270 (75) av	760
L_90~270 (85) av	851
L_45 (65) av	748
L_45 (75) av	697
L_45 (85) av	655

Standard: GB/T 29293-2012

C Range: 0 - 360DEG
C Interval: 30.0DEG
Test Speed: HIGH
Temperature:25.3℃
Operators:
Test Date:2025-03-18

γ Range: 0 - 180DEG
γ Interval: 1.0DEG
Test System:EVERFINE GO-2000B_V1 SYSTEM V2.00.488
Humidity:65.0%
Test Distance:6.360m [K=1.0000]
Remarks:

Planar Illuminance Curve



C Range: 0 - 360DEG
C Interval: 30.0DEG
Test Speed: HIGH
Temperature: 25.3 °C
Operators:
Test Date: 2025-03-18

γ Range: 0 - 180DEG
 γ Interval: 1.0DEG
Test System: EVERFINE GO-2000B_V1 SYSTEM V2.00.488
Humidity: 65.0%
Test Distance: 6.360m [K=1.0000]
Remarks:

LUMINOUS DISTRIBUTION INTENSITY DATA

Test:U:24.00V I:0.4559A P:10.94W PF:1.000 Freq:0Hz Lamp Flux:30.6359x1 lm																	
NAME: SF15-24V-5050-70-SPI-RGBW(3000K)-B									TYPE:						WEIGHT:		
SPEC.:									DIM.: Length=1m						SERIAL No.:		
MFR.: OLYMPIA lighting									SUR.:						Shielding Angle:		

Table--1

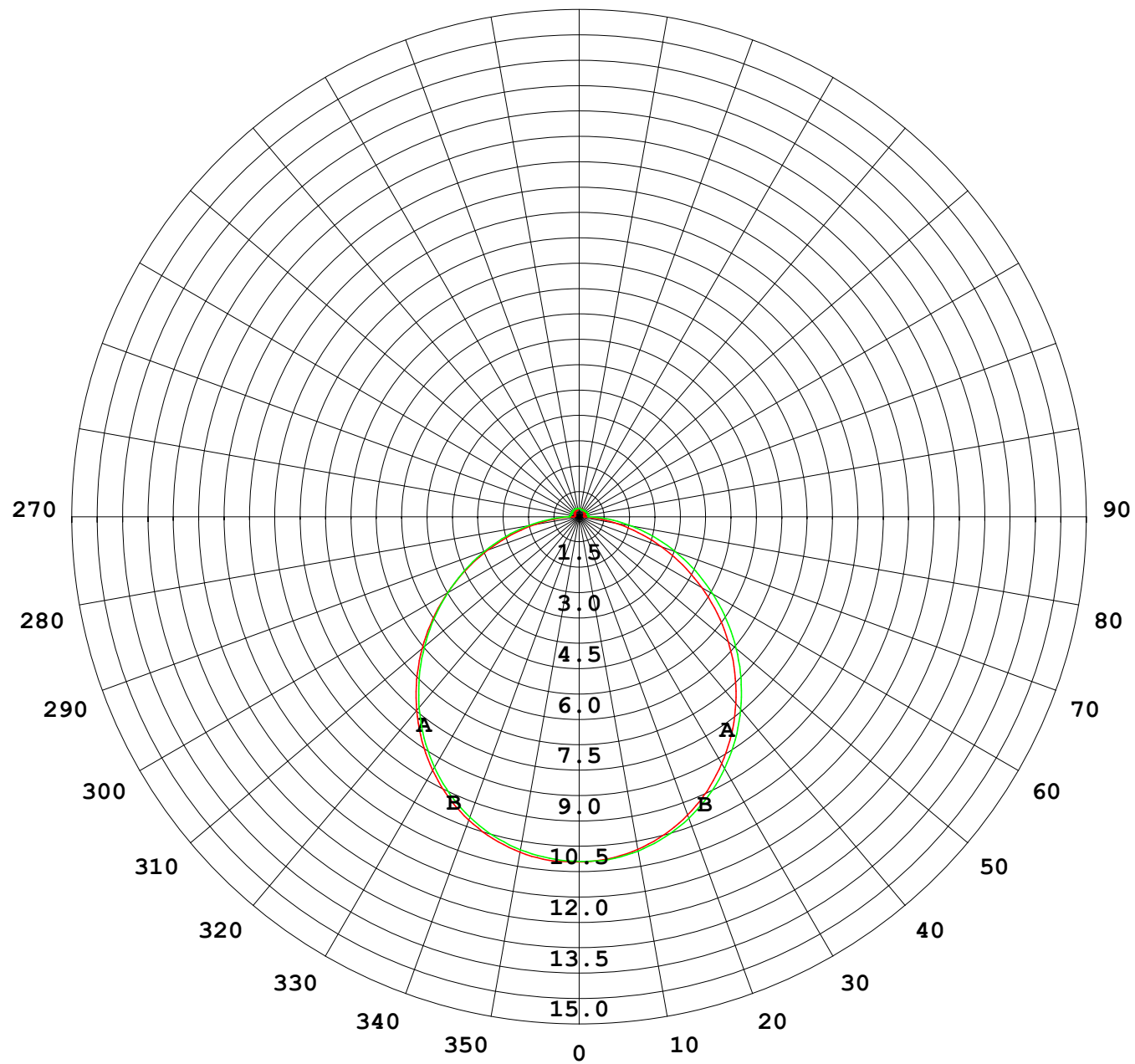
UNIT: cd

C (DEG) γ (DEG)	0	30	60	90	120	150	180	210	240	270	300	330						
0	10.2	10.2	10.2	10.2	10.2	10.2	10.2	10.2	10.2	10.2	10.2	10.2						
5	10.2	10.2	10.2	10.1	10.2	10.1	10.1	10.2	10.2	10.2	10.2	10.2						
10	10.1	10.0	10.0	10.0	10.0	9.98	9.97	10.0	10.0	10.0	10.0	10.1						
15	9.85	9.82	9.82	9.77	9.78	9.74	9.72	9.77	9.77	9.81	9.81	9.85						
20	9.54	9.51	9.51	9.45	9.45	9.40	9.37	9.43	9.45	9.50	9.51	9.55						
25	9.13	9.11	9.10	9.06	9.04	8.97	8.95	9.01	9.04	9.09	9.11	9.15						
30	8.65	8.62	8.62	8.56	8.54	8.47	8.43	8.50	8.56	8.61	8.63	8.67						
35	8.09	8.06	8.06	8.00	7.97	7.89	7.85	7.93	7.99	8.06	8.09	8.12						
40	7.47	7.43	7.43	7.37	7.34	7.24	7.20	7.29	7.37	7.44	7.47	7.49						
45	6.79	6.76	6.75	6.69	6.65	6.55	6.51	6.60	6.70	6.78	6.80	6.81						
50	6.06	6.02	6.03	5.97	5.92	5.81	5.76	5.86	5.97	6.06	6.09	6.08						
55	5.29	5.25	5.28	5.24	5.16	5.04	4.99	5.09	5.22	5.32	5.34	5.31						
60	4.48	4.45	4.51	4.48	4.38	4.25	4.19	4.30	4.45	4.57	4.57	4.53						
65	3.67	3.65	3.73	3.72	3.60	3.44	3.38	3.50	3.66	3.80	3.79	3.73						
70	2.86	2.86	2.95	2.97	2.82	2.64	2.58	2.70	2.87	3.03	2.99	2.93						
75	2.07	2.09	2.19	2.24	2.06	1.88	1.81	1.93	2.10	2.28	2.22	2.15						
80	1.32	1.35	1.46	1.52	1.33	1.14	1.08	1.19	1.36	1.57	1.48	1.41						
85	0.64	0.67	0.77	0.82	0.65	0.50	0.46	0.54	0.68	0.89	0.77	0.72						
90	0.19	0.20	0.26	0.29	0.27	0.19	0.15	0.18	0.20	0.29	0.20	0.21						
95	0.15	0.18	0.23	0.28	0.25	0.19	0.15	0.16	0.20	0.27	0.16	0.15						
100	0.15	0.18	0.23	0.28	0.25	0.20	0.15	0.15	0.20	0.27	0.17	0.14						
105	0.15	0.18	0.23	0.27	0.25	0.20	0.16	0.15	0.21	0.27	0.17	0.14						
110	0.15	0.19	0.23	0.27	0.25	0.21	0.16	0.15	0.21	0.27	0.18	0.14						
115	0.15	0.19	0.23	0.26	0.25	0.21	0.17	0.15	0.21	0.27	0.19	0.14						
120	0.16	0.20	0.23	0.26	0.25	0.21	0.18	0.16	0.21	0.26	0.19	0.15						
125	0.17	0.21	0.23	0.26	0.25	0.22	0.18	0.17	0.21	0.25	0.19	0.16						
130	0.18	0.22	0.23	0.26	0.25	0.23	0.19	0.18	0.22	0.25	0.20	0.16						
135	0.19	0.22	0.23	0.26	0.25	0.23	0.20	0.18	0.22	0.24	0.20	0.16						
140	0.20	0.23	0.24	0.26	0.25	0.24	0.21	0.19	0.22	0.23	0.21	0.17						
145	0.20	0.23	0.24	0.26	0.25	0.24	0.22	0.20	0.23	0.23	0.21	0.18						
150	0.20	0.24	0.25	0.26	0.25	0.24	0.23	0.21	0.23	0.23	0.22	0.19						
155	0.21	0.24	0.25	0.26	0.25	0.25	0.23	0.22	0.24	0.23	0.24	0.20						
160	0.22	0.25	0.25	0.26	0.25	0.25	0.24	0.22	0.25	0.23	0.24	0.21						
165	0.23	0.25	0.25	0.26	0.25	0.25	0.24	0.23	0.25	0.23	0.25	0.22						
170	0.24	0.25	0.25	0.25	0.25	0.25	0.24	0.24	0.25	0.24	0.25	0.23						
175	0.24	0.25	0.25	0.25	0.25	0.25	0.24	0.24	0.25	0.24	0.25	0.24						
180	0.25	0.25	0.25	0.25	0.25	0.25	0.24	0.25	0.25	0.25	0.25	0.25						

C Range: 0 - 360DEG
C Interval: 30.0DEG
Test Speed: HIGH
Temperature:25.3℃
Operators:
Test Date:2025-03-18

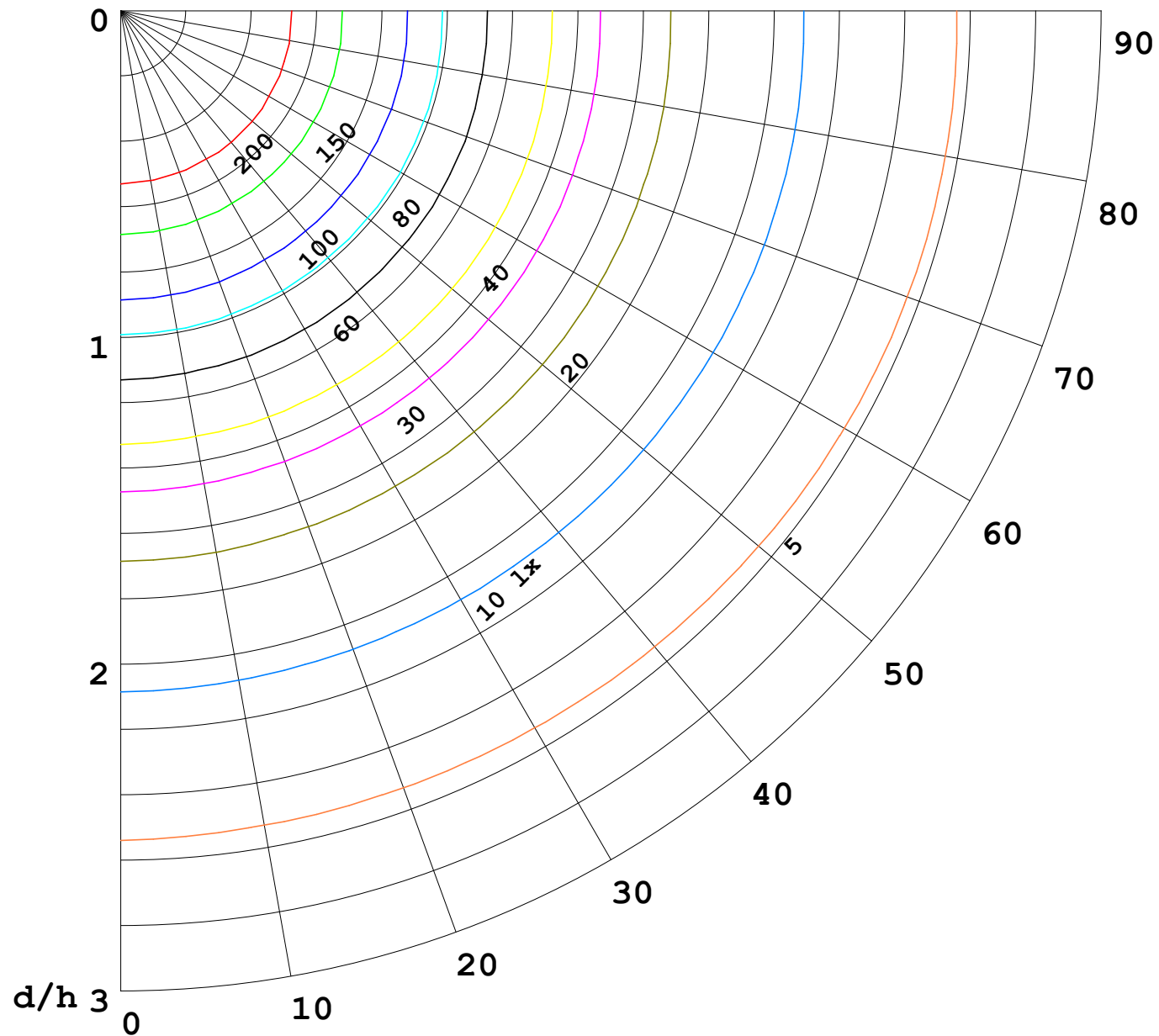
γ Range: 0 - 180DEG
γ Interval: 1.0DEG
Test System:EVERFINE GO-2000B_V1 SYSTEM V2.00.488
Humidity:65.0%
Test Distance:6.360m [K=1.0000]
Remarks:

I (cd)



1000 lm

$\kappa = 1$



	Pcc	Pw	Pfc
_____	70	50	30
_____	50	30	20

