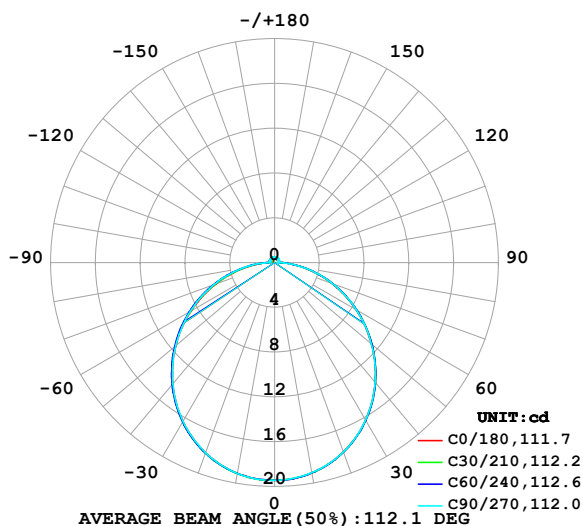


LUMINAIRE PHOTOMETRIC TEST REPORT

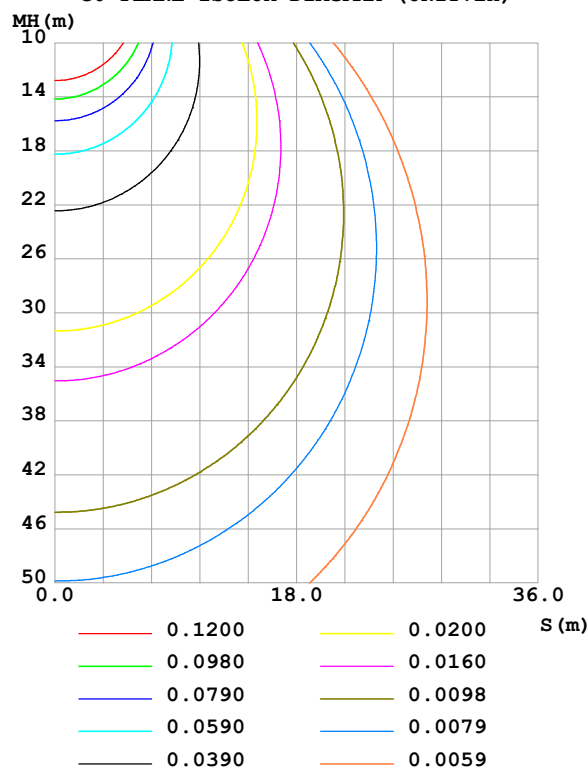
Test:U:24.00V I:0.4710A P:11.30W PF:1.000 Freq:0Hz Lamp Flux:59.1065x1 lm		
NAME: SF15-24V-5050-70-SPI-RGBW(2700K)-R	TYPE:	WEIGHT:
SPEC.:	DIM.: Length=1m	SERIAL No.:
MFR.: OLympia lighting	SUR.:	Shielding Angle:

DATA OF LAMP		PHOTOMETRIC DATA				Eff: 5.23 lm/W
MODEL	5050	I _{max} (cd)	19.44	S/MH(C0/180)	1.25	
NOMINAL POWER(W)		LOR(%)	100.0	S/MH(C90/270)	1.25	
RATED VOLTAGE(V)	24	TOTAL FLUX(lm)	59.107	η UP,DN(C0-180)	2.1,47.3	
NOMINAL FLUX(lm)	59.1065	CIE CLASS	DIRECT	η UP,DN(C180-360)	2.3,48.3	
LAMPS INSIDE	1	η up (%)	4.4	CIBSE SHR NOM	1.25	
TEST VOLTAGE(V)		η down (%)	95.6	CIBSE SHR MAX	1.35	

LUMINOUS INTENSITY DISTRIBUTION DIAGRAM



C0 PLANE ISOLUX DIAGRAM (UNIT:lx)



C Range: 0 - 360DEG
C Interval: 30.0DEG
Test Speed: HIGH
Temperature:25.3℃
Operators:
Test Date:2025-03-06

γ Range: 0 - 180DEG
γ Interval: 1.0DEG
Test System:EVERFINE GO-2000B_V1 SYSTEM V2.00.488
Humidity:65.0%
Test Distance:6.360m [K=1.0000]
Remarks:

ZONAL FLUX DIAGRAM

ZONAL FLUX DIAGRAM:

γ	C0	C45	C90	C135	C180	C225	C270	C315	γ	Φ zone	Φ total	%lum, lamp
10	19.09	19.09	19.06	19.09	19.12	19.14	19.12	19.11	0- 10	1.840	1.840	3.11,3.11
20	17.99	18.01	17.99	18.03	18.08	18.11	18.07	18.06	10- 20	5.265	7.106	12,12
30	16.25	16.29	16.26	16.31	16.38	16.44	16.37	16.35	20- 30	7.956	15.06	25.5,25.5
40	13.97	14.02	13.97	14.05	14.16	14.23	14.14	14.11	30- 40	9.552	24.61	41.6,41.6
50	11.28	11.36	11.30	11.39	11.52	11.62	11.53	11.47	40- 50	9.877	34.49	58.4,58.4
60	8.394	8.465	8.432	8.479	8.599	8.756	8.686	8.615	50- 60	8.961	43.45	73.5,73.5
70	5.443	5.518	5.500	5.486	5.556	5.752	5.754	5.689	60- 70	7.007	50.46	85.4,85.4
80	2.623	2.700	2.687	2.628	2.700	2.853	2.926	2.881	70- 80	4.386	54.84	92.8,92.8
90	0.5527	0.4853	0.3242	0.4926	0.6163	0.6693	0.4991	0.6115	80- 90	1.657	56.50	95.6,95.6
100	0.3629	0.3454	0.3445	0.3137	0.2885	0.4289	0.4747	0.4227	90-100	0.4498	56.95	96.4,96.4
110	0.3486	0.3411	0.3821	0.3413	0.2972	0.4245	0.4862	0.4183	100-110	0.3969	57.35	97,97
120	0.3400	0.3554	0.4052	0.3791	0.3286	0.4346	0.4921	0.4212	110-120	0.3842	57.73	97.7,97.7
130	0.3657	0.3885	0.4284	0.4125	0.3629	0.4447	0.4921	0.4285	120-130	0.3629	58.10	98.3,98.3
140	0.3828	0.4231	0.4545	0.4401	0.3972	0.4519	0.4921	0.4372	130-140	0.3292	58.43	98.8,98.8
150	0.4199	0.4533	0.4921	0.4662	0.4314	0.4677	0.4921	0.4488	140-150	0.2807	58.71	99.3,99.3
160	0.4513	0.4821	0.5007	0.4837	0.4629	0.4763	0.4950	0.4677	150-160	0.2166	58.92	99.7,99.7
170	0.4743	0.4951	0.5007	0.4953	0.4857	0.4893	0.4950	0.4880	160-170	0.1372	59.06	99.9,99.9
180	0.4828	0.4994	0.5007	0.4967	0.4857	0.4951	0.5007	0.4982	170-180	0.0470	59.11	100,100
DEG	LUMINOUS INTENSITY:cd									UNIT:lm		

Conical surface Flux(90deg): 29.592 lm

%lum = 50.1%

%lamp = 50.1%

Conical surface Flux(130deg): 47.252 lm

%lum = 79.9%

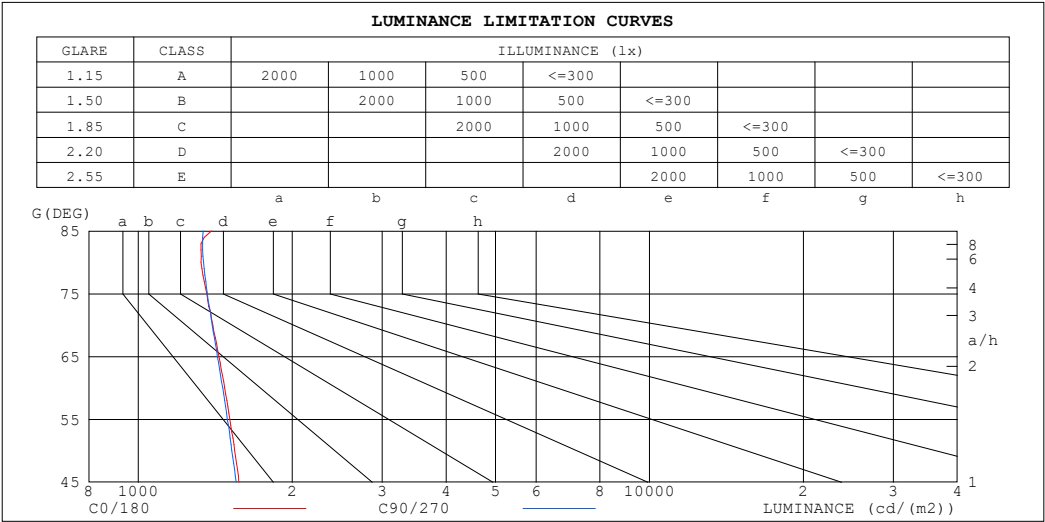
%lamp = 79.9%

C Range: 0 - 360DEG
 C Interval: 30.0DEG
 Test Speed: HIGH
 Temperature:25.3℃
 Operators:
 Test Date:2025-03-06

γ Range: 0 - 180DEG
 γ Interval: 1.0DEG
 Test System:EVERFINE GO-2000B_V1 SYSTEM V2.00.488
 Humidity:65.0%
 Test Distance:6.360m [K=1.0000]
 Remarks:

LUMINANCE LIMITATION CURVES

Test:U:24.00V I:0.4710A P:11.30W PF:1.000 Freq:0Hz Lamp Flux:59.1065x1 lm		
NAME: SF15-24V-5050-70-SPI-RGBW(2700K)-R	TYPE:	WEIGHT:
SPEC.:	DIM.: Length=1m	SERIAL No.:
MFR.: OLympia lighting	SUR.:	Shielding Angle:



LUMINANCE cd/(m2)		
G (DEG)	C0/180	C90/270
85	1391	1339
80	1327	1342
75	1361	1365
70	1398	1394
65	1437	1427
60	1475	1462
55	1510	1493
50	1542	1524
45	1573	1554

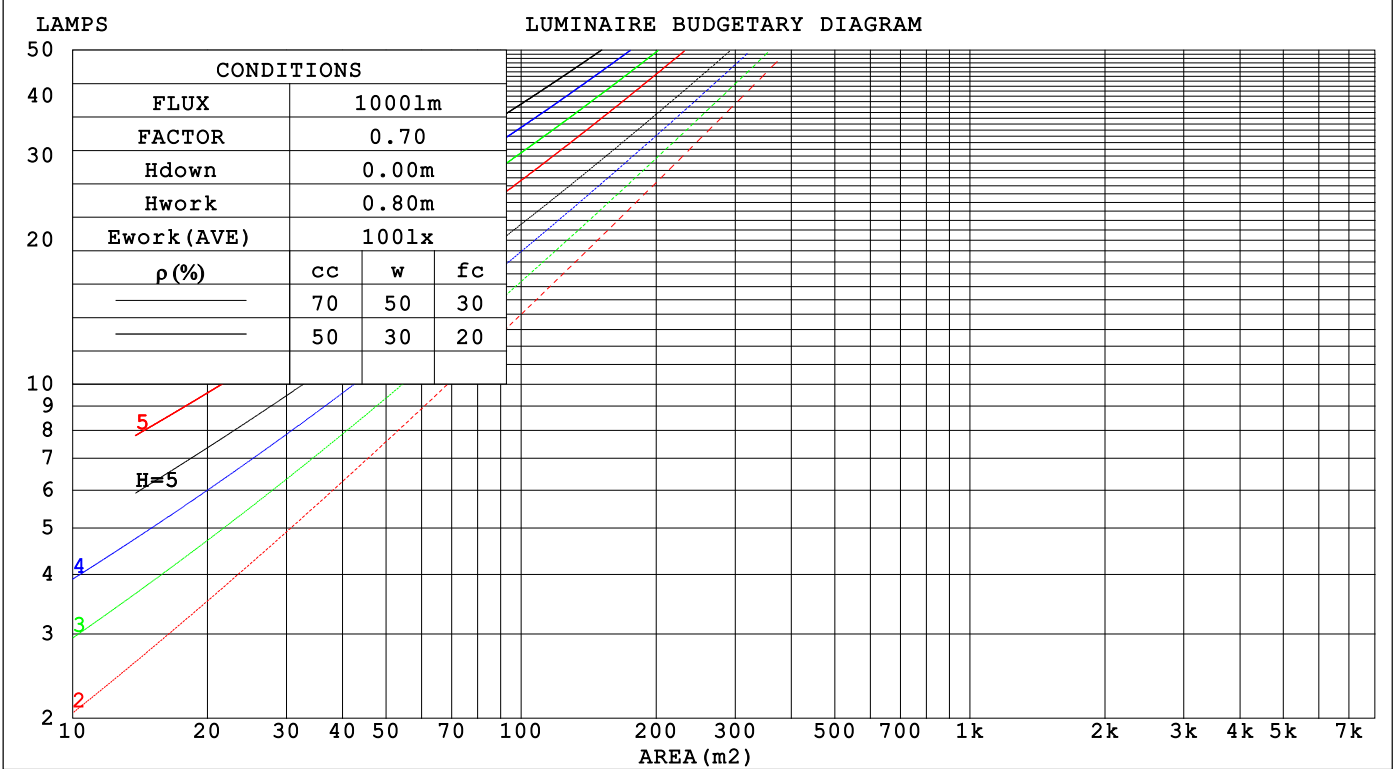
C Range: 0 - 360DEG
C Interval: 30.0DEG
Test Speed: HIGH
Temperature:25.3℃
Operators:
Test Date:2025-03-06

γ Range: 0 - 180DEG
γ Interval: 1.0DEG
Test System:EVERFINE GO-2000B_V1 SYSTEM V2.00.488
Humidity:65.0%
Test Distance:6.360m [K=1.0000]
Remarks:

CU AND LUMINAIRE BUDGETARY ESTIMATE DIAGRAM

Test:U:24.00V I:0.4710A P:11.30W PF:1.000 Freq:0Hz		
Lamp Flux:59.1065x1 lm		
NAME: SF15-24V-5050-70-SPI-RGBW(2700K)-R	TYPE:	WEIGHT:
SPEC.:	DIM.: Length=1m	SERIAL No.:
MFR.: OLYMPIA lighting	SUR.:	Shielding Angle:

pcc	80%			70%			50%			30%			10%			0
pw	50%	30%	10%	50%	30%	10%	50%	30%	10%	50%	30%	10%	50%	30%	10%	0
pfc	20%			20%			20%			20%			20%			0
RCR	RCR:Room Cavity Ratio															



C Range: 0 - 360DEG
C Interval: 30.0DEG
Test Speed: HIGH
Temperature:25.3℃
Operators:
Test Date:2025-03-06

γ Range: 0 - 180DEG
γ Interval: 1.0DEG
Test System:EVERFINE GO-2000B_V1 SYSTEM V2.00.488
Humidity:65.0%
Test Distance:6.360m [K=1.0000]
Remarks:

WEC AND CCEC

Test:U:24.00V I:0.4710A P:11.30W PF:1.000 Freq:0Hz Lamp Flux:59.1065x1 lm		
NAME: SF15-24V-5050-70-SPI-RGBW(2700K)-R	TYPE:	WEIGHT:
SPEC.:	DIM.: Length=1m	SERIAL No.:
MFR.: OLympia lighting	SUR.:	Shielding Angle:

pcc	80%			70%			50%			30%			10%			0														
pw	50%	30%	10%	50%	30%	10%	50%	30%	10%	50%	30%	10%	50%	30%	10%	0														
pfc	20%			20%			20%			20%			20%			0														
RCR	RCR:Room Cavity Ratio															Wall Exitance Coefficients(WEC)														
0.0																														
1.0	.322	.183	.058	.313	.179	.057	.297	.171	.054	.283	.163	.052	.269	.156	.050															
2.0	.298	.163	.050	.290	.160	.049	.276	.153	.048	.263	.148	.046	.251	.142	.045															
3.0	.273	.145	.044	.267	.143	.043	.254	.138	.042	.242	.133	.041	.232	.128	.040															
4.0	.251	.130	.038	.245	.128	.038	.234	.124	.037	.223	.120	.036	.214	.116	.035															
5.0	.231	.118	.034	.226	.116	.034	.216	.112	.033	.207	.109	.032	.198	.106	.032															
6.0	.214	.107	.031	.209	.106	.030	.200	.103	.030	.192	.100	.029	.184	.097	.029															
7.0	.199	.098	.028	.195	.097	.028	.187	.094	.027	.179	.092	.027	.172	.089	.026															
8.0	.186	.091	.026	.182	.089	.025	.174	.087	.025	.167	.085	.024	.161	.083	.024															
9.0	.174	.084	.023	.170	.083	.023	.164	.081	.023	.157	.079	.023	.151	.077	.022															
10.0	.163	.078	.022	.160	.077	.022	.154	.075	.021	.148	.074	.021	.143	.072	.021															

pcc	80%			70%			50%			30%			10%			0
pw	50%	30%	10%	50%	30%	10%	50%	30%	10%	50%	30%	10%	50%	30%	10%	0
pfc	20%			20%			20%			20%			20%			0
RCR	RCR:Room Cavity Ratio						Ceiling Cavity Exitance Coefficients (CCEC)									
0.0	.224	.224	.224	.191	.191	.191	.131	.131	.131	.075	.075	.075	.024	.024	.024	
1.0	.215	.190	.167	.184	.163	.144	.126	.112	.100	.072	.065	.058	.023	.021	.019	
2.0	.207	.166	.131	.177	.143	.114	.122	.099	.079	.070	.057	.046	.022	.019	.015	
3.0	.199	.149	.108	.171	.128	.094	.117	.089	.066	.068	.052	.039	.022	.017	.013	
4.0	.192	.135	.092	.165	.117	.080	.113	.082	.057	.065	.048	.033	.021	.016	.011	
5.0	.184	.125	.082	.158	.108	.071	.109	.076	.050	.063	.044	.030	.020	.014	.010	
6.0	.177	.117	.074	.152	.101	.064	.105	.071	.045	.061	.042	.027	.020	.014	.009	
7.0	.170	.110	.068	.146	.095	.059	.101	.067	.042	.059	.039	.025	.019	.013	.008	
8.0	.164	.104	.063	.141	.090	.055	.098	.064	.039	.057	.037	.023	.018	.012	.008	
9.0	.158	.099	.060	.136	.086	.052	.094	.061	.037	.055	.036	.022	.018	.012	.007	
10.0	.152	.095	.057	.131	.083	.050	.091	.058	.036	.053	.034	.021	.017	.011	.007	

C Range: 0 - 360DEG
C Interval: 30.0DEG
Test Speed: HIGH
Temperature:25.3℃
Operators:
Test Date:2025-03-06

γ Range: 0 - 180DEG
γ Interval: 1.0DEG
Test System:EVERFINE GO-2000B_V1 SYSTEM V2.00.488
Humidity:65.0%
Test Distance:6.360m [K=1.0000]
Remarks:

UGR(Unified Glare Rating) Table

Test:U:24.00V I:0.4710A P:11.30W PF:1.000 Freq:0Hz Lamp Flux:59.1065x1 lm											
NAME: SF15-24V-5050-70-SPI-RGBW(2700K)-R					TYPE:			WEIGHT:			
SPEC.:					DIM.: Length=1m			SERIAL No.:			
MFR.: OLympia lighting					SUR.:			Shielding Angle:			
ceiling/cavity	0.7	0.7	0.5	0.5	0.3	0.7	0.7	0.5	0.5	0.3	
walls	0.5	0.3	0.5	0.3	0.3	0.5	0.3	0.5	0.3	0.3	
working plane	0.2	0.2	0.2	0.2	0.2	0.2	0.2	0.2	0.2	0.2	
Room dimensions		Viewed crosswise					Viewed endwise				
x = 2H y = 2H	2H	23.7	25.1	24.0	25.4	25.7	23.6	25.1	24.0	25.4	25.7
	3H	25.3	26.6	25.6	26.9	27.3	25.2	26.6	25.6	26.9	27.2
	4H	26.0	27.2	26.3	27.6	27.9	25.9	27.2	26.3	27.6	27.9
	6H	26.5	27.7	26.9	28.1	28.4	26.5	27.7	26.9	28.1	28.4
	8H	26.7	27.9	27.1	28.3	28.6	26.7	27.9	27.1	28.3	28.6
	12H	26.9	28.0	27.3	28.4	28.8	26.9	28.0	27.3	28.4	28.8
4H	2H	24.3	25.6	24.7	25.9	26.3	24.3	25.6	24.6	25.9	26.2
	3H	26.1	27.2	26.5	27.6	28.0	26.1	27.2	26.5	27.6	28.0
	4H	26.9	27.9	27.3	28.3	28.8	26.9	27.9	27.3	28.3	28.8
	6H	27.6	28.5	28.1	28.9	29.4	27.6	28.5	28.1	29.0	29.4
	8H	27.9	28.7	28.4	29.2	29.7	27.9	28.7	28.4	29.2	29.7
	12H	28.1	28.9	28.6	29.3	29.8	28.1	28.9	28.6	29.4	29.9
8H	4H	27.2	28.1	27.7	28.5	29.0	27.2	28.1	27.7	28.5	29.0
	6H	28.1	28.8	28.6	29.3	29.8	28.1	28.8	28.6	29.3	29.8
	8H	28.5	29.1	29.0	29.6	30.2	28.5	29.1	29.0	29.6	30.2
	12H	28.8	29.4	29.3	29.9	30.4	28.8	29.4	29.4	29.9	30.5
12H	4H	27.2	28.0	27.7	28.5	29.0	27.2	28.0	27.7	28.5	29.0
	6H	28.2	28.8	28.7	29.3	29.9	28.2	28.8	28.7	29.3	29.9
	8H	28.6	29.2	29.2	29.7	30.3	28.6	29.2	29.2	29.7	30.3
Variations with the observer position at spacings(CIE Pub.117):											
S = 1.0H		+ 0.1 / - 0.2					+ 0.1 / - 0.2				
1.5H		+ 0.2 / - 0.3					+ 0.2 / - 0.3				
2.0H		+ 0.1 / - 0.3					+ 0.1 / - 0.3				

CIE Pub.117, 59.11 lm Total Lamp Luminous Flux Correct (8log(F/F0) = -9.8)
Area: 0.0115 m2

C Range: 0 - 360DEG
C Interval: 30.0DEG
Test Speed: HIGH
Temperature:25.3℃
Operators:
Test Date:2025-03-06

γ Range: 0 - 180DEG
γ Interval: 1.0DEG
Test System:EVERFINE GO-2000B_V1 SYSTEM V2.00.488
Humidity:65.0%
Test Distance:6.360m [K=1.0000]
Remarks:

UTILIZATION FACTORS TABLE

Test:U:24.00V I:0.4710A P:11.30W PF:1.000 Freq:0Hz Lamp Flux:59.1065x1 lm		
NAME: SF15-24V-5050-70-SPI-RGBW(2700K)-R	TYPE:	WEIGHT:
SPEC.:	DIM.: Length=1m	SERIAL No.:
MFR.: OLympia lighting	SUR.:	Shielding Angle:

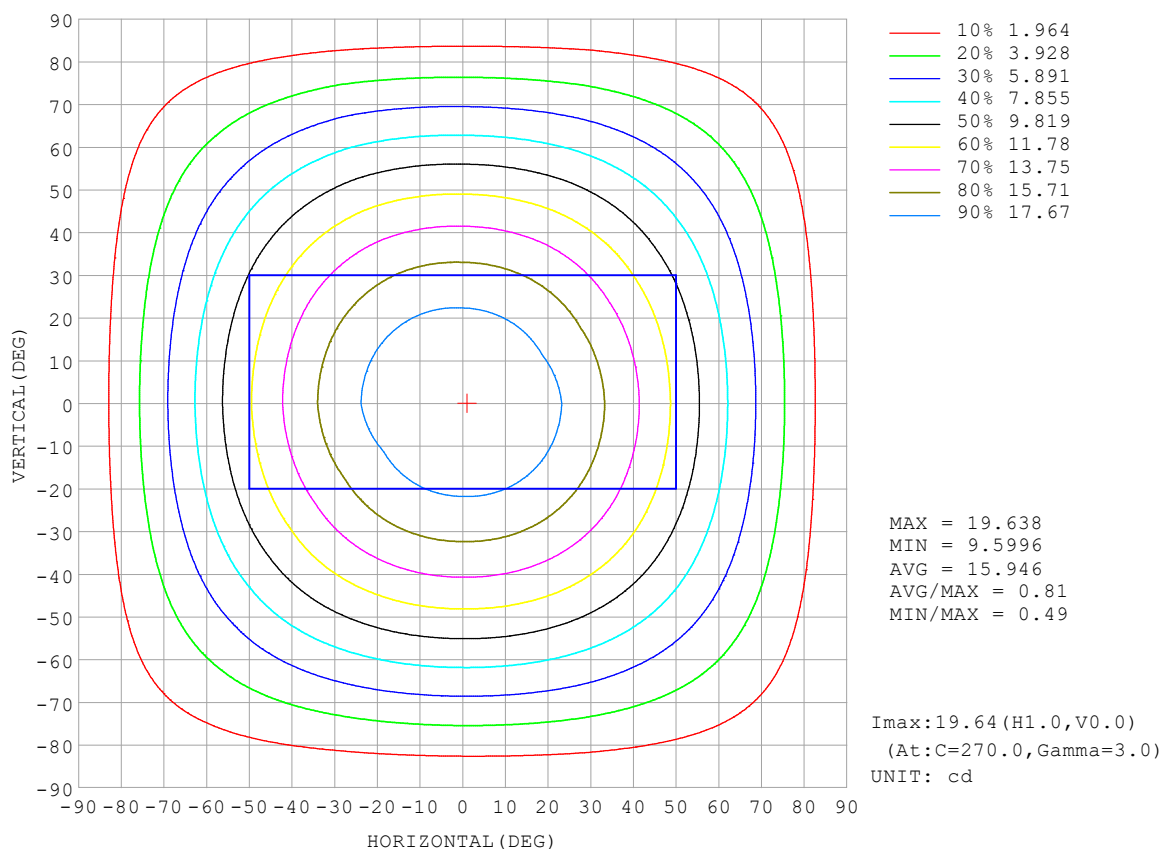
REFLECTANCE										
Ceiling	0.8	0.8	0.8	0.7	0.7	0.7	0.5	0.5	0.5	0
Walls	0.7	0.5	0.3	0.7	0.5	0.3	0.7	0.5	0.3	0
Working plane	0.2	0.2	0.2	0.2	0.2	0.2	0.2	0.2	0.2	0
ROOM INDEX	UTILIZATION FACTORS (PERCENT) $k(RI) \times RCR = 5$									
$k = 0.60$	56	44	37	55	44	37	53	43	37	30
0.80	66	54	46	64	53	46	62	52	46	38
1.00	74	62	55	72	62	55	70	63	54	46
1.25	81	70	63	79	69	62	76	67	61	53
1.50	86	76	68	84	75	68	80	72	66	58
2.00	93	84	77	91	82	76	87	80	74	65
2.50	97	89	82	94	87	81	90	84	79	69
3.00	100	93	87	98	91	86	93	88	83	73
4.00	104	98	93	102	96	92	97	92	88	78
5.00	107	102	97	104	99	95	99	95	92	81
ROOM INDEX	UF (total)									Direct
According to DIN EN 13032-2 2004			Suspended					SHRNOM = 1.25		

C Range: 0 - 360DEG
 C Interval: 30.0DEG
 Test Speed: HIGH
 Temperature: 25.3 °C
 Operators:
 Test Date: 2025-03-06

γ Range: 0 - 180DEG
 γ Interval: 1.0DEG
 Test System: EVERFINE GO-2000B_V1 SYSTEM V2.00.488
 Humidity: 65.0%
 Test Distance: 6.360m [K=1.0000]
 Remarks:

ISOCANDELA DIAGRAM

Test:U:24.00V I:0.4710A P:11.30W PF:1.000 Freq:0Hz Lamp Flux:59.1065x1 lm		
NAME: SF15-24V-5050-70-SPI-RGBW(2700K)-R	TYPE:	WEIGHT:
SPEC.:	DIM.: Length=1m	SERIAL No.:
MFR.: OLympia lighting	SUR.:	Shielding Angle:

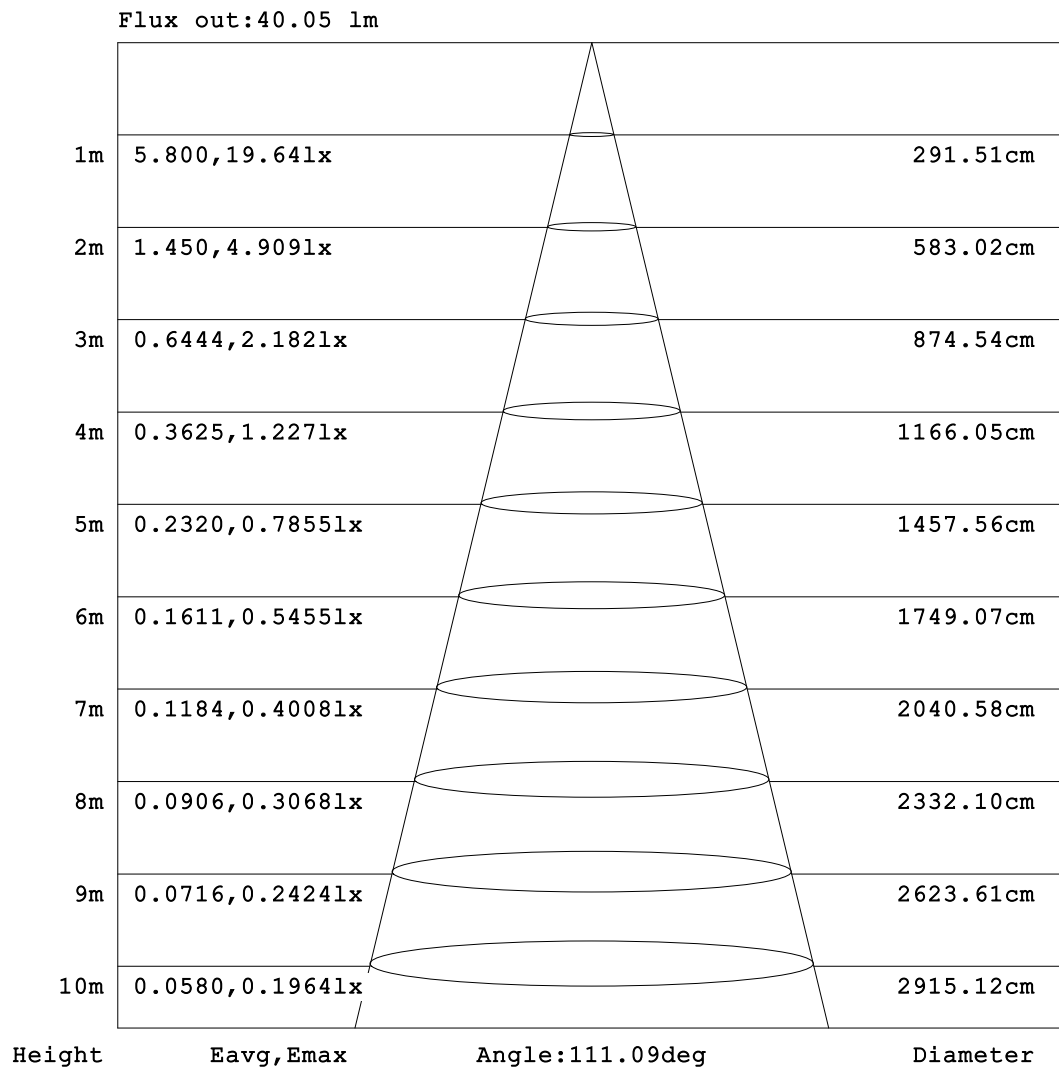


C Range: 0 - 360DEG
C Interval: 30.0DEG
Test Speed: HIGH
Temperature:25.3℃
Operators:
Test Date:2025-03-06

γ Range: 0 - 180DEG
γ Interval: 1.0DEG
Test System:EVERFINE GO-2000B_V1 SYSTEM V2.00.488
Humidity:65.0%
Test Distance:6.360m [K=1.0000]
Remarks:

AAI Figure

Test:U:24.00V I:0.4710A P:11.30W PF:1.000 Freq:0Hz Lamp Flux:59.1065x1 lm		
NAME: SF15-24V-5050-70-SPI-RGBW(2700K)-R	TYPE:	WEIGHT:
SPEC.:	DIM.: Length=1m	SERIAL No.:
MFR.: OLympia lighting	SUR.:	Shielding Angle:



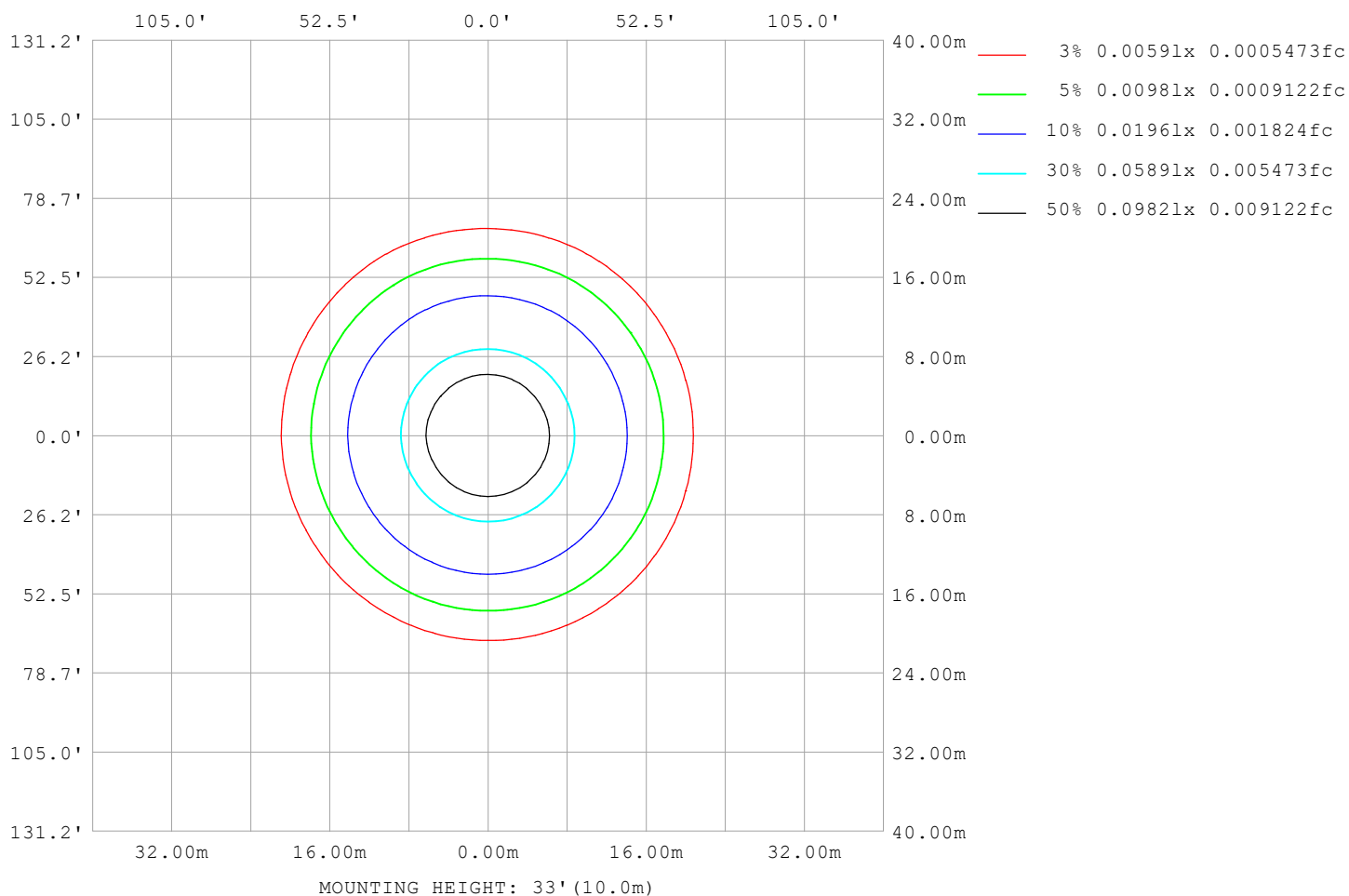
Note:The Curves indicate the illuminated area and the average illumination when the luminaire is at different distance.

C Range: 0 - 360DEG
C Interval: 30.0DEG
Test Speed: HIGH
Temperature:25.3℃
Operators:
Test Date:2025-03-06

γ Range: 0 - 180DEG
γ Interval: 1.0DEG
Test System:EVERFINE GO-2000B_V1 SYSTEM V2.00.488
Humidity:65.0%
Test Distance:6.360m [K=1.0000]
Remarks:

ISOLUX DIAGRAM

Test:U:24.00V I:0.4710A P:11.30W PF:1.000 Freq:0Hz Lamp Flux:59.1065x1 lm		
NAME: SF15-24V-5050-70-SPI-RGBW(2700K)-R	TYPE:	WEIGHT:
SPEC.:	DIM.: Length=1m	SERIAL No.:
MFR.: OLympia lighting	SUR.:	Shielding Angle:



C Range: 0 - 360DEG
C Interval: 30.0DEG
Test Speed: HIGH
Temperature: 25.3°C
Operators:
Test Date: 2025-03-06

γ Range: 0 - 180DEG
γ Interval: 1.0DEG
Test System: EVERFINE GO-2000B_V1 SYSTEM V2.00.488
Humidity: 65.0%
Test Distance: 6.360m [K=1.0000]
Remarks:

LED Avg.L Report

Test:U:24.00V I:0.4710A P:11.30W PF:1.000 Freq:0Hz Lamp Flux:59.1065x1 lm		
NAME: SF15-24V-5050-70-SPI-RGBW(2700K)-R	TYPE:	WEIGHT:
SPEC.:	DIM.: Length=1m	SERIAL No.:
MFR.: OLympia lighting	SUR.:	Shielding Angle:

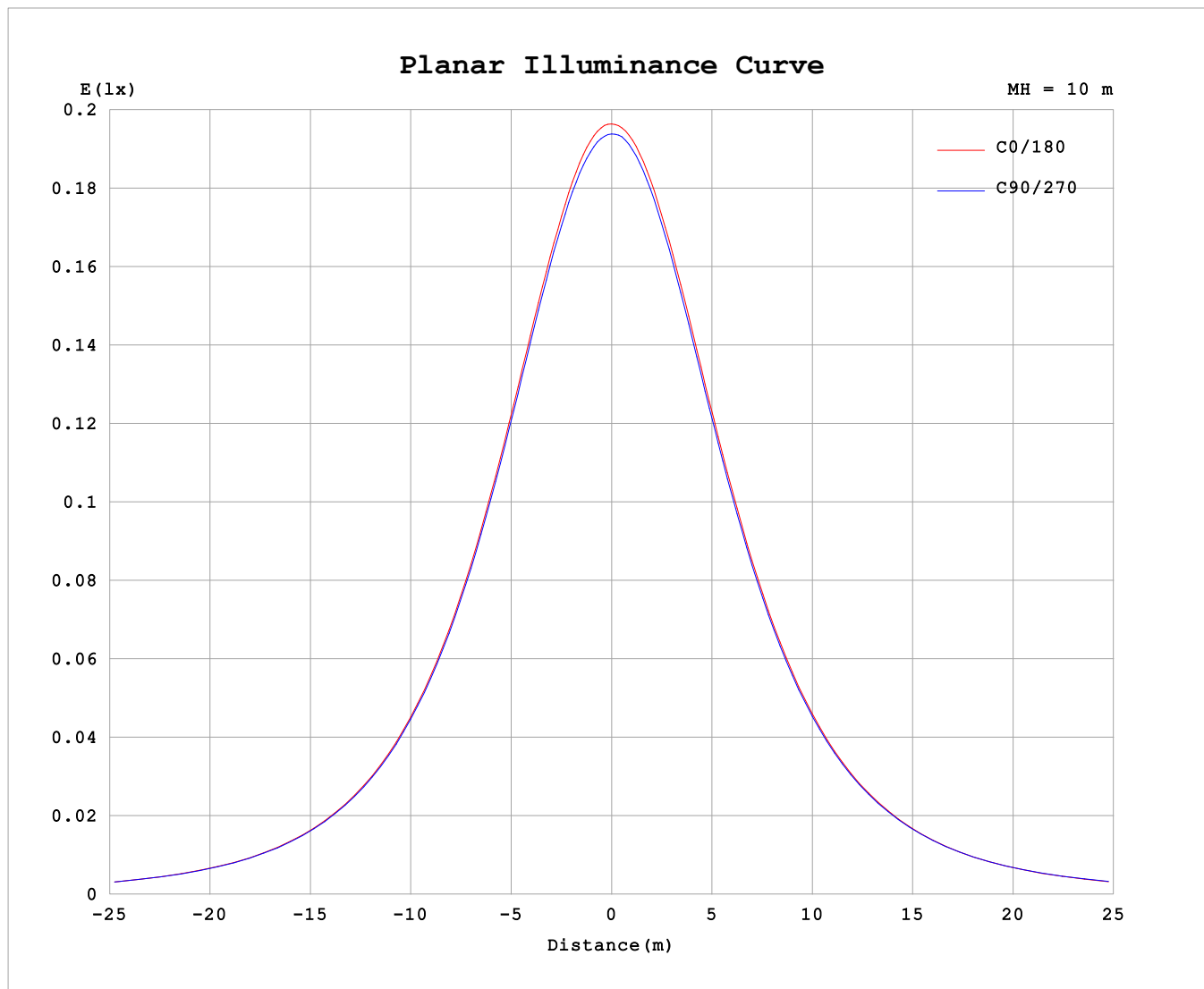
AvgL	cd/m2
L_0~180 (65) av	1440
L_0~180 (75) av	1361
L_0~180 (85) av	1420
L_90~270 (65) av	1459
L_90~270 (75) av	1410
L_90~270 (85) av	1476
L_45 (65) av	1460
L_45 (75) av	1399
L_45 (85) av	1472

Standard: GB/T 29293-2012

C Range: 0 - 360DEG
C Interval: 30.0DEG
Test Speed: HIGH
Temperature:25.3℃
Operators:
Test Date:2025-03-06

γ Range: 0 - 180DEG
γ Interval: 1.0DEG
Test System:EVERFINE GO-2000B_V1 SYSTEM V2.00.488
Humidity:65.0%
Test Distance:6.360m [K=1.0000]
Remarks:

Planar Illuminance Curve



C Range: 0 - 360DEG
C Interval: 30.0DEG
Test Speed: HIGH
Temperature: 25.3 °C
Operators:
Test Date: 2025-03-06

γ Range: 0 - 180DEG
 γ Interval: 1.0DEG
Test System: EVERFINE GO-2000B_V1 SYSTEM V2.00.488
Humidity: 65.0%
Test Distance: 6.360m [K=1.0000]
Remarks:

LUMINOUS DISTRIBUTION INTENSITY DATA

Test:U:24.00V I:0.4710A P:11.30W PF:1.000 Freq:0Hz Lamp Flux:59.1065x1 lm											
NAME: SF15-24V-5050-70-SPI-RGBW(2700K)-R						TYPE:			WEIGHT:		
SPEC.:						DIM.: Length=1m			SERIAL No.:		
MFR.: OLYMPIA lighting						SUR.:			Shielding Angle:		

Table--1

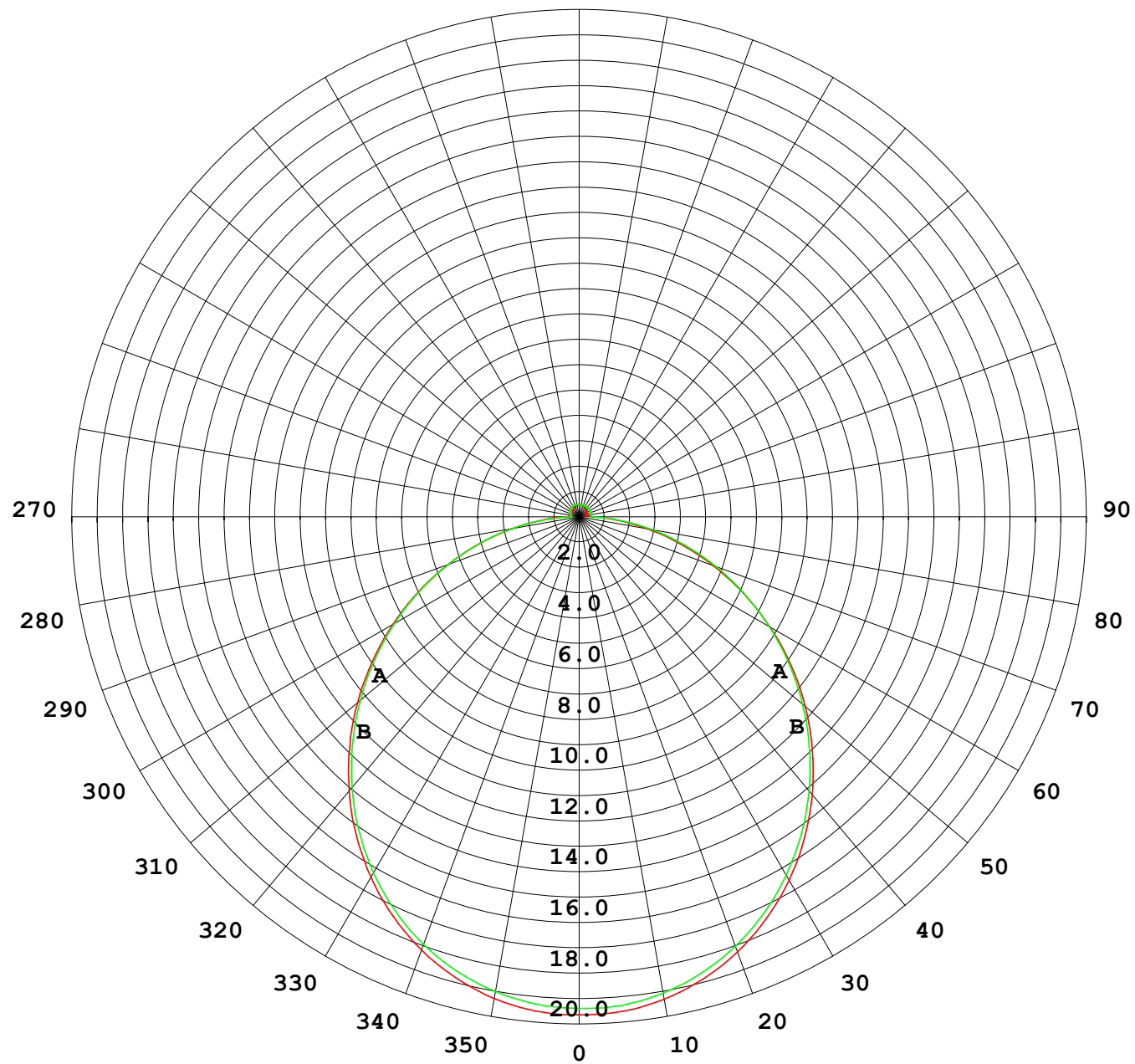
UNIT: cd

C (DEG) γ (DEG)	0	30	60	90	120	150	180	210	240	270	300	330							
0	19.4	19.4	19.4	19.4	19.4	19.4	19.4	19.4	19.4	19.4	19.4	19.4							
5	19.4	19.3	19.4	19.3	19.4	19.4	19.4	19.4	19.4	19.4	19.4	19.4							
10	19.1	19.1	19.1	19.1	19.1	19.1	19.1	19.1	19.1	19.1	19.1	19.1							
15	18.6	18.6	18.6	18.6	18.6	18.7	18.7	18.7	18.7	18.7	18.7	18.7							
20	18.0	18.0	18.0	18.0	18.0	18.0	18.1	18.1	18.1	18.1	18.1	18.1							
25	17.2	17.2	17.2	17.2	17.2	17.3	17.3	17.3	17.3	17.3	17.3	17.3							
30	16.3	16.3	16.3	16.3	16.3	16.3	16.4	16.4	16.4	16.4	16.4	16.3							
35	15.2	15.2	15.2	15.2	15.2	15.3	15.3	15.4	15.4	15.3	15.3	15.3							
40	14.0	14.0	14.0	14.0	14.0	14.1	14.2	14.2	14.2	14.1	14.1	14.1							
45	12.7	12.7	12.7	12.7	12.7	12.8	12.9	12.9	13.0	12.9	12.9	12.8							
50	11.3	11.4	11.4	11.3	11.4	11.4	11.5	11.6	11.7	11.5	11.5	11.4							
55	9.86	9.91	9.93	9.88	9.92	9.99	10.1	10.2	10.3	10.1	10.1	10.00							
60	8.39	8.45	8.48	8.43	8.45	8.51	8.60	8.70	8.81	8.69	8.68	8.55							
65	6.91	6.97	7.00	6.96	6.96	6.99	7.08	7.18	7.34	7.22	7.21	7.08							
70	5.44	5.50	5.54	5.50	5.48	5.49	5.56	5.64	5.86	5.75	5.75	5.62							
75	4.01	4.06	4.10	4.07	4.03	4.03	4.09	4.15	4.38	4.32	4.33	4.19							
80	2.62	2.68	2.72	2.69	2.63	2.63	2.70	2.78	2.93	2.93	2.95	2.81							
85	1.38	1.40	1.41	1.35	1.30	1.38	1.47	1.53	1.61	1.61	1.63	1.52							
90	0.55	0.52	0.45	0.32	0.44	0.55	0.62	0.69	0.65	0.50	0.61	0.62							
95	0.38	0.36	0.36	0.34	0.33	0.35	0.36	0.44	0.48	0.47	0.46	0.41							
100	0.36	0.35	0.34	0.34	0.31	0.31	0.29	0.38	0.48	0.47	0.45	0.39							
105	0.35	0.34	0.34	0.37	0.32	0.32	0.28	0.36	0.49	0.48	0.46	0.39							
110	0.35	0.34	0.34	0.38	0.35	0.33	0.30	0.36	0.49	0.49	0.46	0.38							
115	0.34	0.35	0.34	0.39	0.37	0.36	0.31	0.37	0.50	0.49	0.47	0.37							
120	0.34	0.36	0.35	0.41	0.38	0.38	0.33	0.37	0.50	0.49	0.47	0.37							
125	0.35	0.37	0.37	0.42	0.40	0.39	0.35	0.38	0.50	0.49	0.47	0.38							
130	0.37	0.39	0.39	0.43	0.42	0.41	0.36	0.39	0.50	0.49	0.47	0.38							
135	0.38	0.40	0.41	0.44	0.42	0.42	0.38	0.40	0.50	0.49	0.48	0.39							
140	0.38	0.42	0.42	0.45	0.44	0.44	0.40	0.41	0.50	0.49	0.48	0.40							
145	0.40	0.44	0.44	0.47	0.46	0.45	0.41	0.42	0.50	0.49	0.48	0.41							
150	0.42	0.45	0.46	0.49	0.47	0.47	0.43	0.44	0.50	0.49	0.48	0.42							
155	0.43	0.47	0.47	0.50	0.47	0.48	0.45	0.45	0.50	0.49	0.49	0.43							
160	0.45	0.48	0.48	0.50	0.48	0.49	0.46	0.45	0.50	0.49	0.49	0.44							
165	0.46	0.49	0.49	0.50	0.48	0.50	0.48	0.47	0.50	0.49	0.50	0.45							
170	0.47	0.50	0.49	0.50	0.49	0.50	0.49	0.48	0.50	0.49	0.50	0.47							
175	0.48	0.50	0.49	0.50	0.50	0.50	0.49	0.49	0.50	0.49	0.50	0.49							
180	0.48	0.50	0.50	0.50	0.50	0.50	0.49	0.49	0.50	0.50	0.50	0.49							

C Range: 0 - 360DEG
C Interval: 30.0DEG
Test Speed: HIGH
Temperature:25.3℃
Operators:
Test Date:2025-03-06

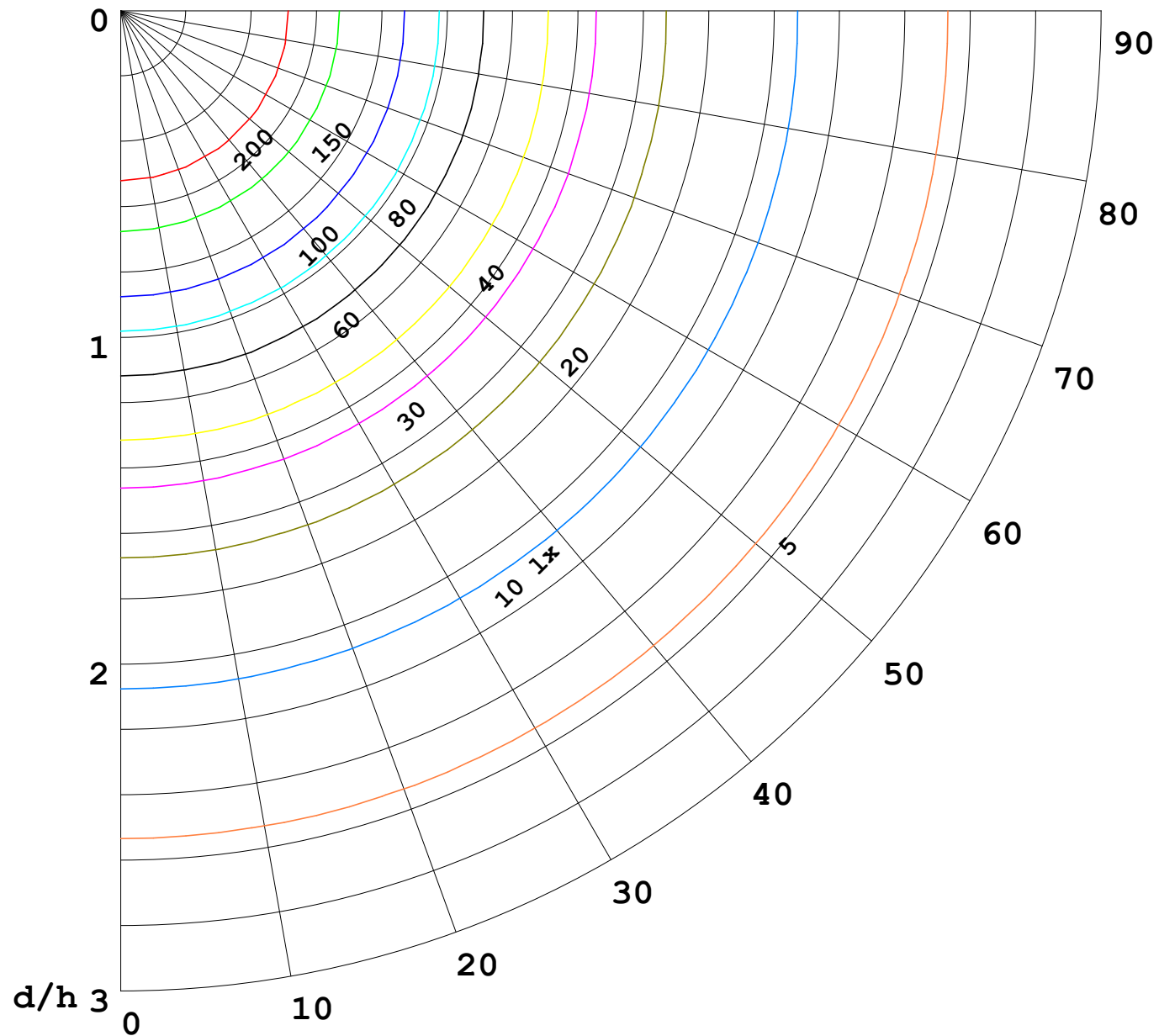
γ Range: 0 - 180DEG
γ Interval: 1.0DEG
Test System:EVERFINE GO-2000B_V1 SYSTEM V2.00.488
Humidity:65.0%
Test Distance:6.360m [K=1.0000]
Remarks:

I (cd)



1000 lm

$\kappa = 1$



F = 1000 lm
 K = 0.7
 Hcc = 0.8 m
 Hfc = 0.0 m
 Eave = 100 lx

	Pcc	Pw	Pfc
—————	70	50	30
—————	50	30	20

