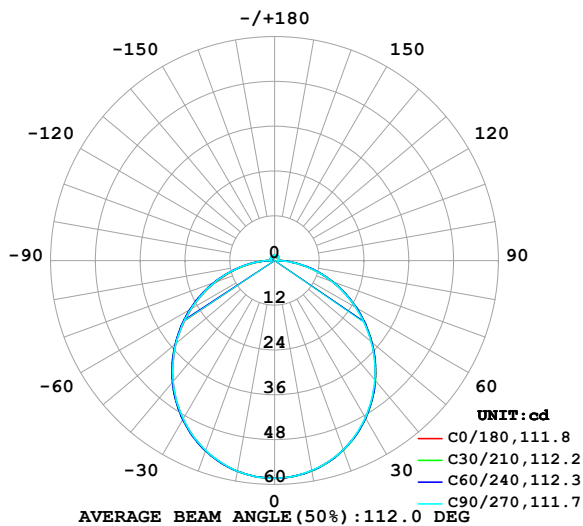


## LUMINAIRE PHOTOMETRIC TEST REPORT

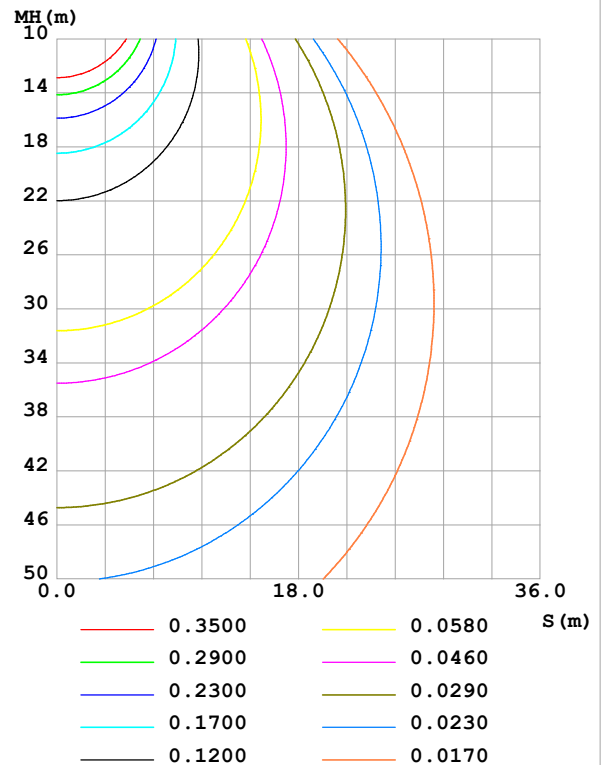
Test:U:24.00V I:0.4753A P:11.41W PF:1.000 Freq:0Hz Lamp Flux:176.459x1 lm		
NAME: SF15-24V-5050-70-SPI-RGBW(2700K)-W	TYPE:	WEIGHT:
SPEC.:	DIM.: Length=1m	SERIAL No.:
MFR.: OLympia lighting	SUR.:	Shielding Angle:

DATA OF LAMP		PHOTOMETRIC DATA Eff: 15.47 lm/W			
MODEL	5050	Imax (cd)	58.30	S/MH(C0/180)	1.25
NOMINAL POWER(W)		LOR(%)	100.0	S/MH(C90/270)	1.25
RATED VOLTAGE(V)	24	TOTAL FLUX(lm)	176.46	$\eta$ UP,DN(C0-180)	2.0,47.5
NOMINAL FLUX(lm)	176.459	CIE CLASS	DIRECT	$\eta$ UP,DN(C180-360)	2.1,48.4
LAMPS INSIDE	1	$\eta$ up (%)	4.1	CIBSE SHR NOM	1.25
TEST VOLTAGE(V)		$\eta$ down (%)	95.9	CIBSE SHR MAX	1.35

LUMINOUS INTENSITY DISTRIBUTION DIAGRAM



C0 PLANE ISOLUX DIAGRAM (UNIT:lx)



C Range: 0 - 360DEG  
C Interval: 30.0DEG  
Test Speed: HIGH  
Temperature:25.3℃  
Operators:  
Test Date:2025-03-06

$\gamma$  Range: 0 - 180DEG  
 $\gamma$  Interval: 1.0DEG  
Test System:EVERFINE GO-2000B\_V1 SYSTEM V2.00.488  
Humidity:65.0%  
Test Distance:6.360m [K=1.0000]  
Remarks:

## ZONAL FLUX DIAGRAM

## ZONAL FLUX DIAGRAM:

$\gamma$	C0	C45	C90	C135	C180	C225	C270	C315	$\gamma$	$\Phi$ zone	$\Phi$ total	%lum, lamp
10	57.21	57.21	57.15	57.23	57.31	57.33	57.29	57.29	0- 10	5.516	5.516	3.13,3.13
20	53.94	53.98	53.89	54.01	54.14	54.23	54.11	54.12	10- 20	15.78	21.29	12.1,12.1
30	48.76	48.79	48.63	48.86	49.05	49.21	49.03	49.00	20- 30	23.83	45.13	25.6,25.6
40	41.94	42.00	41.78	42.07	42.39	42.59	42.35	42.27	30- 40	28.61	73.73	41.8,41.8
50	33.94	34.02	33.77	34.10	34.50	34.76	34.50	34.36	40- 50	29.58	103.3	58.5,58.5
60	25.25	25.35	25.12	25.39	25.81	26.15	25.92	25.76	50- 60	26.82	130.1	73.7,73.7
70	16.42	16.53	16.31	16.44	16.79	17.22	17.10	16.97	60- 70	20.96	151.1	85.6,85.6
80	7.964	8.103	7.873	7.874	8.129	8.560	8.598	8.547	70- 80	13.12	164.2	93.1,93.1
90	1.673	1.487	0.8332	1.449	1.889	1.845	1.244	1.742	80- 90	4.931	169.1	95.9,95.9
100	1.062	1.047	0.9400	0.9068	0.9050	1.090	1.217	1.128	90-100	1.258	170.4	96.6,96.6
110	1.013	1.021	1.061	0.9830	0.8357	1.087	1.271	1.105	100-110	1.095	171.5	97.2,97.2
120	1.015	1.066	1.148	1.087	0.9286	1.154	1.303	1.121	110-120	1.066	172.6	97.8,97.8
130	1.097	1.125	1.220	1.176	1.016	1.204	1.329	1.176	120-130	1.018	173.6	98.4,98.4
140	1.169	1.215	1.298	1.265	1.114	1.255	1.341	1.216	130-140	0.9298	174.5	98.9,98.9
150	1.227	1.309	1.375	1.342	1.216	1.311	1.375	1.273	140-150	0.7974	175.3	99.3,99.3
160	1.340	1.381	1.445	1.404	1.323	1.371	1.401	1.342	150-160	0.6199	175.9	99.7,99.7
170	1.404	1.432	1.468	1.453	1.401	1.423	1.439	1.417	160-170	0.3972	176.3	99.9,99.9
180	1.436	1.455	1.468	1.463	1.430	1.455	1.468	1.462	170-180	0.1376	176.5	100,100
DEG	LUMINOUS INTENSITY:cd									UNIT:lm		

Conical surface Flux(90deg): 88.644 lm

%lum = 50.2%

%lamp = 50.2%

Conical surface Flux(130deg): 141.5 lm

%lum = 80.2%

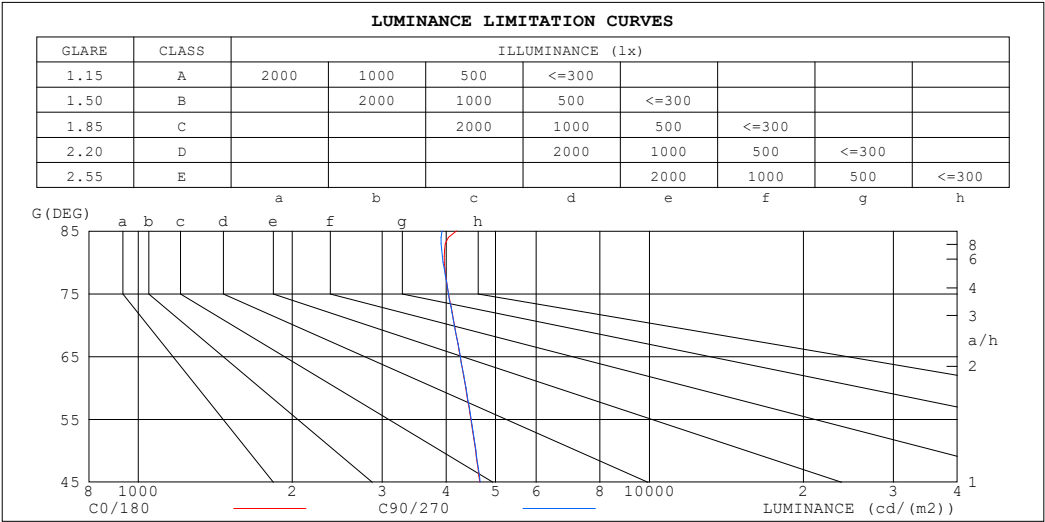
%lamp = 80.2%

C Range: 0 - 360DEG  
 C Interval: 30.0DEG  
 Test Speed: HIGH  
 Temperature:25.3℃  
 Operators:  
 Test Date:2025-03-06

$\gamma$  Range: 0 - 180DEG  
 $\gamma$  Interval: 1.0DEG  
 Test System:EVERFINE GO-2000B\_V1 SYSTEM V2.00.488  
 Humidity:65.0%  
 Test Distance:6.360m [K=1.0000]  
 Remarks:

LUMINANCE LIMITATION CURVES

Test:U:24.00V I:0.4753A P:11.41W PF:1.000 Freq:0Hz Lamp Flux:176.459x1 lm		
NAME: SF15-24V-5050-70-SPI-RGBW(2700K)-W	TYPE:	WEIGHT:
SPEC.:	DIM.: Length=1m	SERIAL No.:
MFR.: OLympia lighting	SUR.:	Shielding Angle:



LUMINANCE cd/(m2)		
G (DEG)	C0/180	C90/270
85	4192	3929
80	3967	3947
75	4045	4044
70	4153	4151
65	4264	4264
60	4368	4374
55	4470	4476
50	4567	4574
45	4655	4664

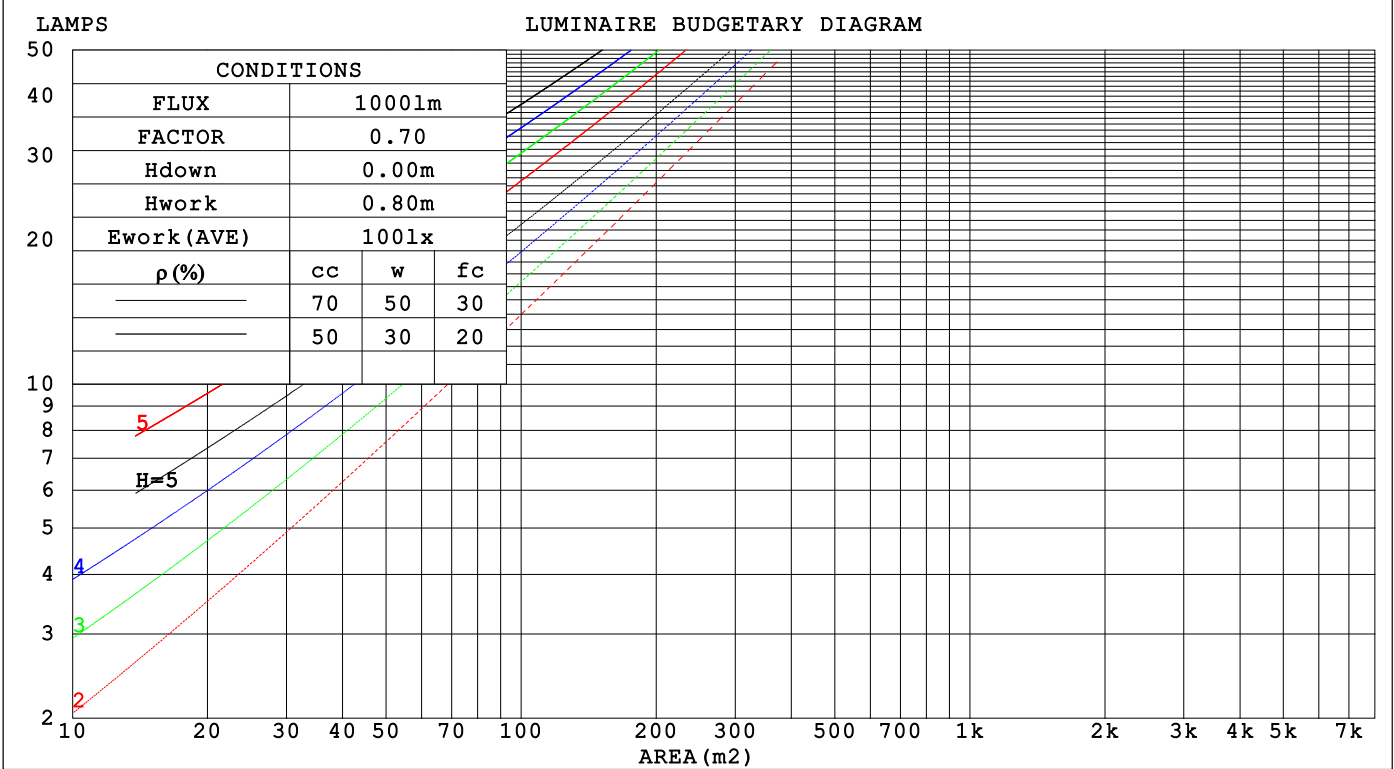
C Range: 0 - 360DEG  
C Interval: 30.0DEG  
Test Speed: HIGH  
Temperature:25.3℃  
Operators:  
Test Date:2025-03-06

γ Range: 0 - 180DEG  
γ Interval: 1.0DEG  
Test System:EVERFINE GO-2000B\_V1 SYSTEM V2.00.488  
Humidity:65.0%  
Test Distance:6.360m [K=1.0000]  
Remarks:

CU AND LUMINAIRE BUDGETARY ESTIMATE DIAGRAM

Test:U:24.00V I:0.4753A P:11.41W PF:1.000 Freq:0Hz		
Lamp Flux:176.459x1 lm		
NAME: SF15-24V-5050-70-SPI-RGBW(2700K)-W	TYPE:	WEIGHT:
SPEC.:	DIM.: Length=1m	SERIAL No.:
MFR.: OLYMPIA lighting	SUR.:	Shielding Angle:

pcc	80%			70%			50%			30%			10%			0
p <sub>w</sub>	50%	30%	10%	50%	30%	10%	50%	30%	10%	50%	30%	10%	50%	30%	10%	0
p <sub>fc</sub>	20%			20%			20%			20%			20%			0
RCR	RCR:Room Cavity Ratio															



C Range: 0 - 360DEG  
C Interval: 30.0DEG  
Test Speed: HIGH  
Temperature:25.3℃  
Operators:  
Test Date:2025-03-06

γ Range: 0 - 180DEG  
γ Interval: 1.0DEG  
Test System:EVERFINE GO-2000B\_V1 SYSTEM V2.00.488  
Humidity:65.0%  
Test Distance:6.360m [K=1.0000]  
Remarks:

## WEC AND CCEC

Test:U:24.00V I:0.4753A P:11.41W PF:1.000 Freq:0Hz Lamp Flux:176.459x1 lm		
NAME: SF15-24V-5050-70-SPI-RGBW(2700K)-W	TYPE:	WEIGHT:
SPEC.:	DIM.: Length=1m	SERIAL No.:
MFR.: OLympia lighting	SUR.:	Shielding Angle:

pcc	80%			70%			50%			30%			10%			0														
pw	50%	30%	10%	50%	30%	10%	50%	30%	10%	50%	30%	10%	50%	30%	10%	0														
pfc	20%			20%			20%			20%			20%			0														
RCR	RCR:Room Cavity Ratio															Wall Exitance Coefficients(WEC)														
0.0																														
1.0	.321	.183	.058	.313	.179	.057	.297	.171	.054	.283	.163	.052	.270	.156	.050															
2.0	.298	.163	.050	.290	.160	.049	.276	.154	.048	.263	.148	.046	.252	.142	.045															
3.0	.273	.145	.044	.267	.143	.043	.254	.138	.042	.243	.133	.041	.232	.129	.040															
4.0	.251	.130	.038	.245	.128	.038	.234	.124	.037	.224	.120	.036	.214	.116	.035															
5.0	.231	.118	.034	.226	.116	.034	.216	.113	.033	.207	.109	.032	.198	.106	.032															
6.0	.214	.107	.031	.209	.106	.030	.201	.103	.030	.192	.100	.029	.184	.097	.029															
7.0	.199	.098	.028	.195	.097	.028	.187	.094	.027	.179	.092	.027	.172	.089	.026															
8.0	.186	.091	.026	.182	.090	.025	.175	.087	.025	.168	.085	.025	.161	.083	.024															
9.0	.174	.084	.023	.170	.083	.023	.164	.081	.023	.158	.079	.023	.152	.077	.022															
10.0	.163	.078	.022	.160	.077	.022	.154	.076	.021	.149	.074	.021	.143	.072	.021															

pcc	80%			70%			50%			30%			10%			0
pw	50%	30%	10%	50%	30%	10%	50%	30%	10%	50%	30%	10%	50%	30%	10%	0
pfc	20%			20%			20%			20%			20%			0
RCR	RCR:Room Cavity Ratio						Ceiling Cavity Exitance Coefficients (CCEC)									
0.0	.222	.222	.222	.190	.190	.190	.130	.130	.130	.074	.074	.074	.024	.024	.024	
1.0	.213	.188	.165	.182	.161	.142	.125	.111	.098	.072	.064	.057	.023	.021	.019	
2.0	.205	.164	.129	.176	.141	.112	.120	.098	.078	.069	.057	.046	.022	.018	.015	
3.0	.197	.147	.106	.169	.126	.092	.116	.088	.065	.067	.051	.038	.022	.017	.012	
4.0	.190	.133	.090	.163	.115	.079	.112	.080	.055	.065	.047	.033	.021	.015	.011	
5.0	.182	.123	.080	.157	.107	.069	.108	.074	.049	.062	.044	.029	.020	.014	.010	
6.0	.175	.115	.072	.150	.099	.062	.104	.070	.044	.060	.041	.026	.019	.013	.009	
7.0	.168	.108	.066	.145	.094	.057	.100	.066	.041	.058	.039	.024	.019	.013	.008	
8.0	.162	.102	.061	.139	.089	.054	.096	.062	.038	.056	.037	.023	.018	.012	.007	
9.0	.156	.097	.058	.134	.084	.051	.093	.059	.036	.054	.035	.021	.018	.012	.007	
10.0	.150	.093	.055	.129	.081	.048	.090	.057	.034	.052	.034	.020	.017	.011	.007	

C Range: 0 - 360DEG  
C Interval: 30.0DEG  
Test Speed: HIGH  
Temperature:25.3℃  
Operators:  
Test Date:2025-03-06

γ Range: 0 - 180DEG  
γ Interval: 1.0DEG  
Test System:EVERFINE GO-2000B\_V1 SYSTEM V2.00.488  
Humidity:65.0%  
Test Distance:6.360m [K=1.0000]  
Remarks:

UGR(Unified Glare Rating) Table

Test:U:24.00V I:0.4753A P:11.41W PF:1.000 Freq:0Hz Lamp Flux:176.459x1 lm										
NAME: SF15-24V-5050-70-SPI-RGBW(2700K)-W					TYPE:			WEIGHT:		
SPEC.:					DIM.: Length=1m			SERIAL No.:		
MFR.: OLympia lighting					SUR.:			Shielding Angle:		
ceiling/cavity	0.7	0.7	0.5	0.5	0.3	0.7	0.7	0.5	0.5	0.3
walls	0.5	0.3	0.5	0.3	0.3	0.5	0.3	0.5	0.3	0.3
working plane	0.2	0.2	0.2	0.2	0.2	0.2	0.2	0.2	0.2	0.2
Room dimensions	Viewed crosswise					Viewed endwise				
x = 2H y = 2H	23.6	25.1	24.0	25.4	25.7	23.7	25.1	24.0	25.4	25.7
3H	25.2	26.6	25.6	26.9	27.2	25.3	26.6	25.6	26.9	27.2
4H	25.9	27.2	26.3	27.6	27.9	25.9	27.2	26.3	27.6	27.9
6H	26.5	27.7	26.9	28.1	28.4	26.5	27.7	26.9	28.1	28.4
8H	26.7	27.9	27.1	28.2	28.6	26.7	27.9	27.1	28.2	28.6
12H	26.9	28.0	27.3	28.4	28.8	26.9	28.0	27.3	28.4	28.8
4H 2H	24.3	25.6	24.6	25.9	26.2	24.3	25.6	24.6	25.9	26.2
3H	26.1	27.2	26.5	27.6	28.0	26.1	27.2	26.5	27.6	28.0
4H	26.9	27.9	27.3	28.3	28.7	26.9	27.9	27.3	28.3	28.8
6H	27.6	28.5	28.0	28.9	29.4	27.6	28.5	28.1	28.9	29.4
8H	27.9	28.7	28.3	29.2	29.6	27.9	28.7	28.3	29.2	29.6
12H	28.1	28.9	28.6	29.3	29.8	28.1	28.9	28.6	29.3	29.8
8H 4H	27.2	28.1	27.7	28.5	29.0	27.2	28.1	27.7	28.5	29.0
6H	28.1	28.8	28.6	29.3	29.8	28.1	28.8	28.6	29.3	29.8
8H	28.5	29.1	29.0	29.6	30.1	28.5	29.1	29.0	29.6	30.2
12H	28.8	29.4	29.3	29.9	30.4	28.8	29.4	29.3	29.9	30.4
12H 4H	27.2	28.0	27.7	28.5	29.0	27.2	28.0	27.7	28.5	29.0
6H	28.2	28.8	28.7	29.3	29.8	28.2	28.8	28.7	29.3	29.9
8H	28.6	29.2	29.2	29.7	30.2	28.6	29.2	29.2	29.7	30.3
Variations with the observer position at spacings(CIE Pub.117):										
S = 1.0H	+ 0.1 / - 0.2					+ 0.1 / - 0.2				
1.5H	+ 0.2 / - 0.3					+ 0.2 / - 0.3				
2.0H	+ 0.1 / - 0.3					+ 0.1 / - 0.3				

CIE Pub.117, 176.5 lm Total Lamp Luminous Flux Correct (8log(F/F0) = -6.0)  
Area: 0.0115 m2

C Range: 0 - 360DEG  
C Interval: 30.0DEG  
Test Speed: HIGH  
Temperature:25.3℃  
Operators:  
Test Date:2025-03-06

γ Range: 0 - 180DEG  
γ Interval: 1.0DEG  
Test System:EVERFINE GO-2000B\_V1 SYSTEM V2.00.488  
Humidity:65.0%  
Test Distance:6.360m [K=1.0000]  
Remarks:

## UTILIZATION FACTORS TABLE

Test:U:24.00V I:0.4753A P:11.41W PF:1.000 Freq:0Hz Lamp Flux:176.459x1 lm		
NAME: SF15-24V-5050-70-SPI-RGBW(2700K)-W	TYPE:	WEIGHT:
SPEC.:	DIM.: Length=1m	SERIAL No.:
MFR.: OLympia lighting	SUR.:	Shielding Angle:

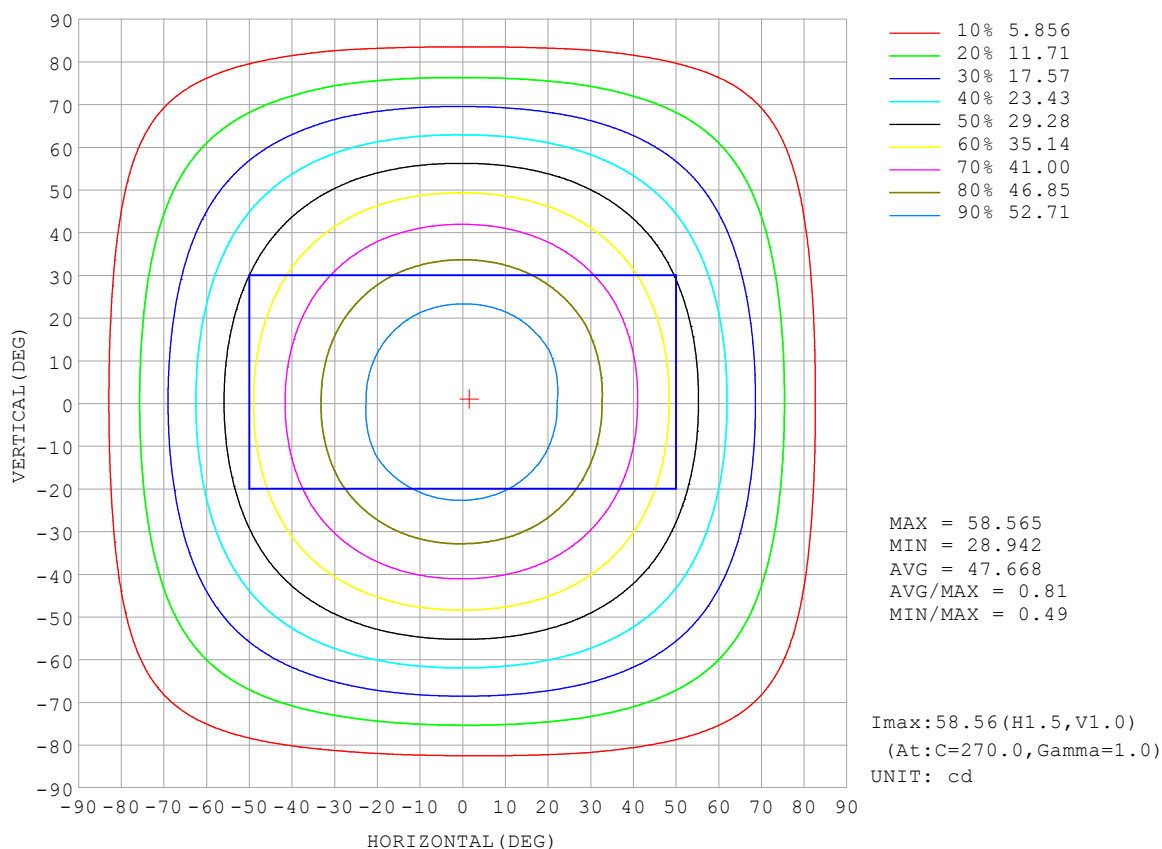
REFLECTANCE										
Ceiling	0.8	0.8	0.8	0.7	0.7	0.7	0.5	0.5	0.5	0
Walls	0.7	0.5	0.3	0.7	0.5	0.3	0.7	0.5	0.3	0
Working plane	0.2	0.2	0.2	0.2	0.2	0.2	0.2	0.2	0.2	0
ROOM INDEX	UTILIZATION FACTORS (PERCENT) $k(RI) \times RCR = 5$									
$k = 0.60$	56	44	37	55	44	37	54	43	37	30
0.80	66	54	46	64	53	46	62	52	46	38
1.00	74	63	55	73	62	55	70	63	54	46
1.25	81	70	63	79	69	62	76	68	61	53
1.50	86	76	68	84	75	68	81	72	66	58
2.00	93	84	77	91	82	76	87	80	74	66
2.50	97	89	82	95	87	81	90	84	79	70
3.00	100	93	87	98	91	86	93	88	83	74
4.00	104	98	93	102	96	92	97	92	89	78
5.00	107	102	97	104	99	96	99	95	92	81
ROOM INDEX	UF(total)									Direct
According to DIN EN 13032-2 2004			Suspended					SHRNOM = 1.25		

C Range: 0 - 360DEG  
 C Interval: 30.0DEG  
 Test Speed: HIGH  
 Temperature: 25.3°C  
 Operators:  
 Test Date: 2025-03-06

γ Range: 0 - 180DEG  
 γ Interval: 1.0DEG  
 Test System: EVERFINE GO-2000B\_V1 SYSTEM V2.00.488  
 Humidity: 65.0%  
 Test Distance: 6.360m [K=1.0000]  
 Remarks:

## ISOCANDELA DIAGRAM

Test:U:24.00V I:0.4753A P:11.41W PF:1.000 Freq:0Hz Lamp Flux:176.459x1 lm		
NAME: SF15-24V-5050-70-SPI-RGBW(2700K)-W	TYPE:	WEIGHT:
SPEC.:	DIM.: Length=1m	SERIAL No.:
MFR.: OLympia lighting	SUR.:	Shielding Angle:



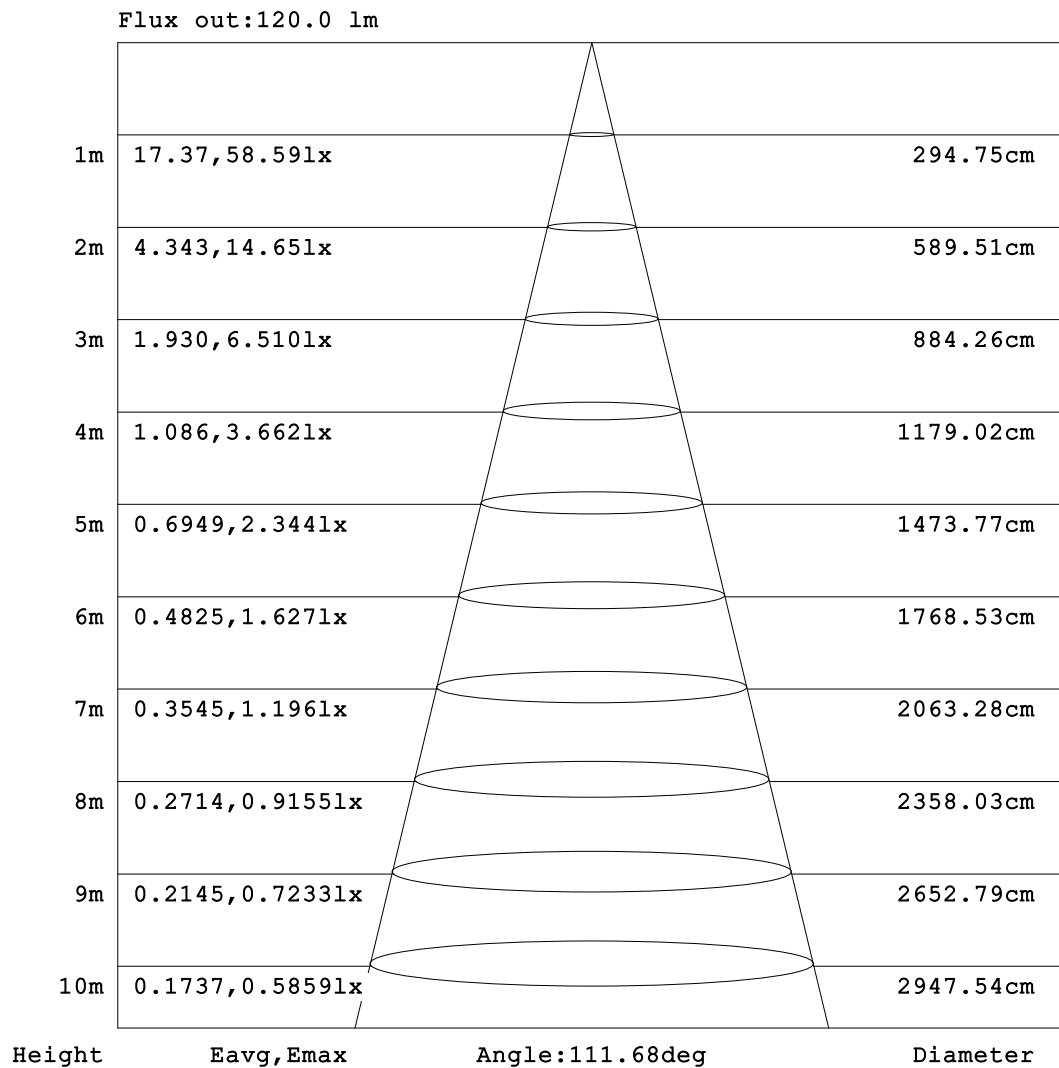
C Range: 0 - 360DEG  
C Interval: 30.0DEG  
Test Speed: HIGH  
Temperature:25.3℃  
Operators:  
Test Date:2025-03-06

γ Range: 0 - 180DEG  
γ Interval: 1.0DEG  
Test System:EVERFINE GO-2000B\_V1 SYSTEM V2.00.488  
Humidity:65.0%  
Test Distance:6.360m [K=1.0000]  
Remarks:



## AAI Figure

Test:U:24.00V I:0.4753A P:11.41W PF:1.000 Freq:0Hz Lamp Flux:176.459lx 1m		
NAME: SF15-24V-5050-70-SPI-RGBW(2700K)-W	TYPE:	WEIGHT:
SPEC.:	DIM.: Length=1m	SERIAL No.:
MFR.: OLympia lighting	SUR.:	Shielding Angle:



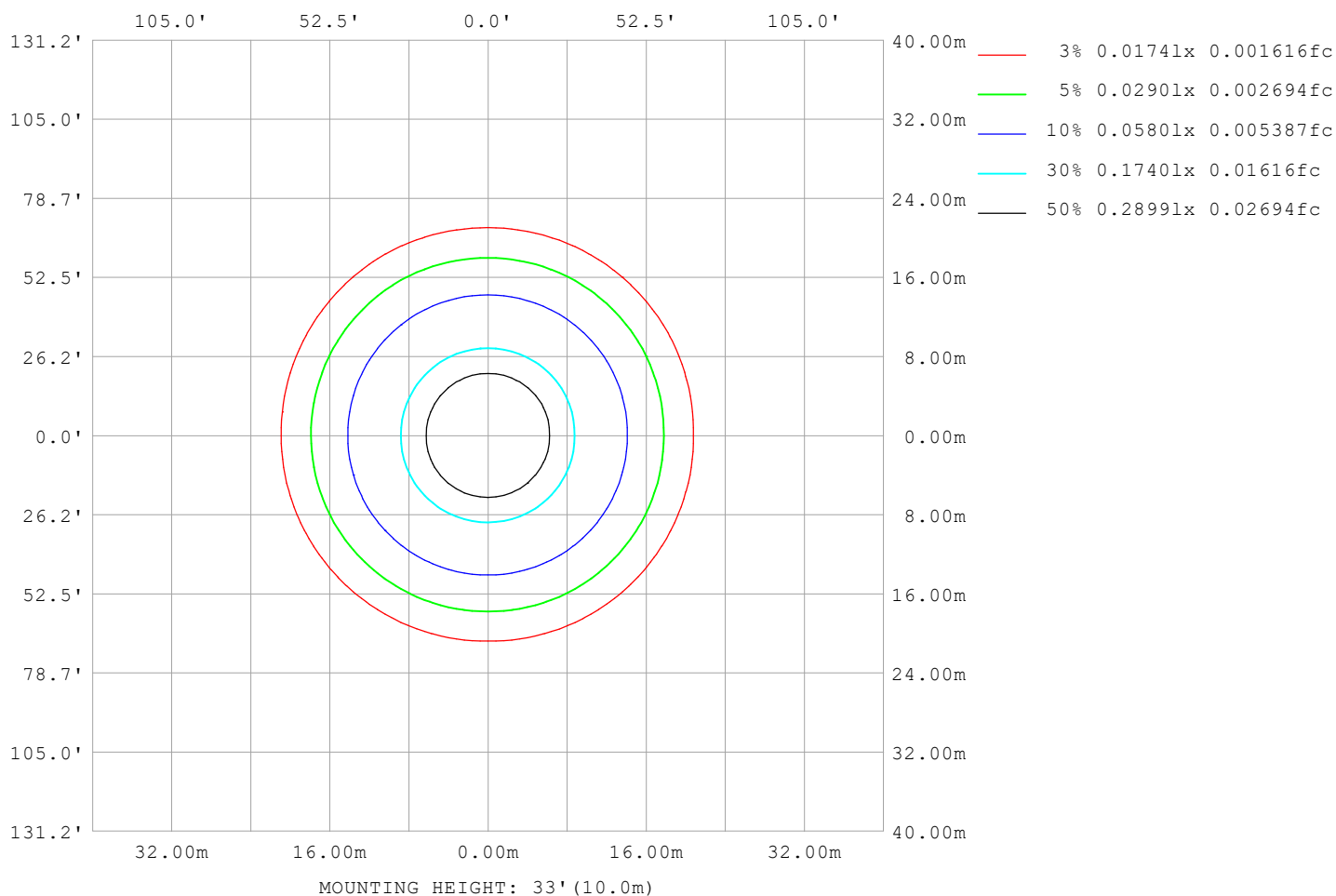
Note:The Curves indicate the illuminated area and the average illumination when the luminaire is at different distance.

C Range: 0 - 360DEG  
C Interval: 30.0DEG  
Test Speed: HIGH  
Temperature:25.3℃  
Operators:  
Test Date:2025-03-06

γ Range: 0 - 180DEG  
γ Interval: 1.0DEG  
Test System:EVERFINE GO-2000B\_V1 SYSTEM V2.00.488  
Humidity:65.0%  
Test Distance:6.360m [K=1.0000]  
Remarks:

## ISOLUX DIAGRAM

Test:U:24.00V I:0.4753A P:11.41W PF:1.000 Freq:0Hz Lamp Flux:176.459x1 lm		
NAME: SF15-24V-5050-70-SPI-RGBW(2700K)-W	TYPE:	WEIGHT:
SPEC.:	DIM.: Length=1m	SERIAL No.:
MFR.: OLympia lighting	SUR.:	Shielding Angle:



C Range: 0 - 360DEG  
C Interval: 30.0DEG  
Test Speed: HIGH  
Temperature: 25.3°C  
Operators:  
Test Date: 2025-03-06

γ Range: 0 - 180DEG  
γ Interval: 1.0DEG  
Test System: EVERFINE GO-2000B\_V1 SYSTEM V2.00.488  
Humidity: 65.0%  
Test Distance: 6.360m [K=1.0000]  
Remarks:

## LED Avg.L Report

Test:U:24.00V I:0.4753A P:11.41W PF:1.000 Freq:0Hz Lamp Flux:176.459x1 lm		
NAME: SF15-24V-5050-70-SPI-RGBW(2700K)-W	TYPE:	WEIGHT:
SPEC.:	DIM.: Length=1m	SERIAL No.:
MFR.: OLympia lighting	SUR.:	Shielding Angle:

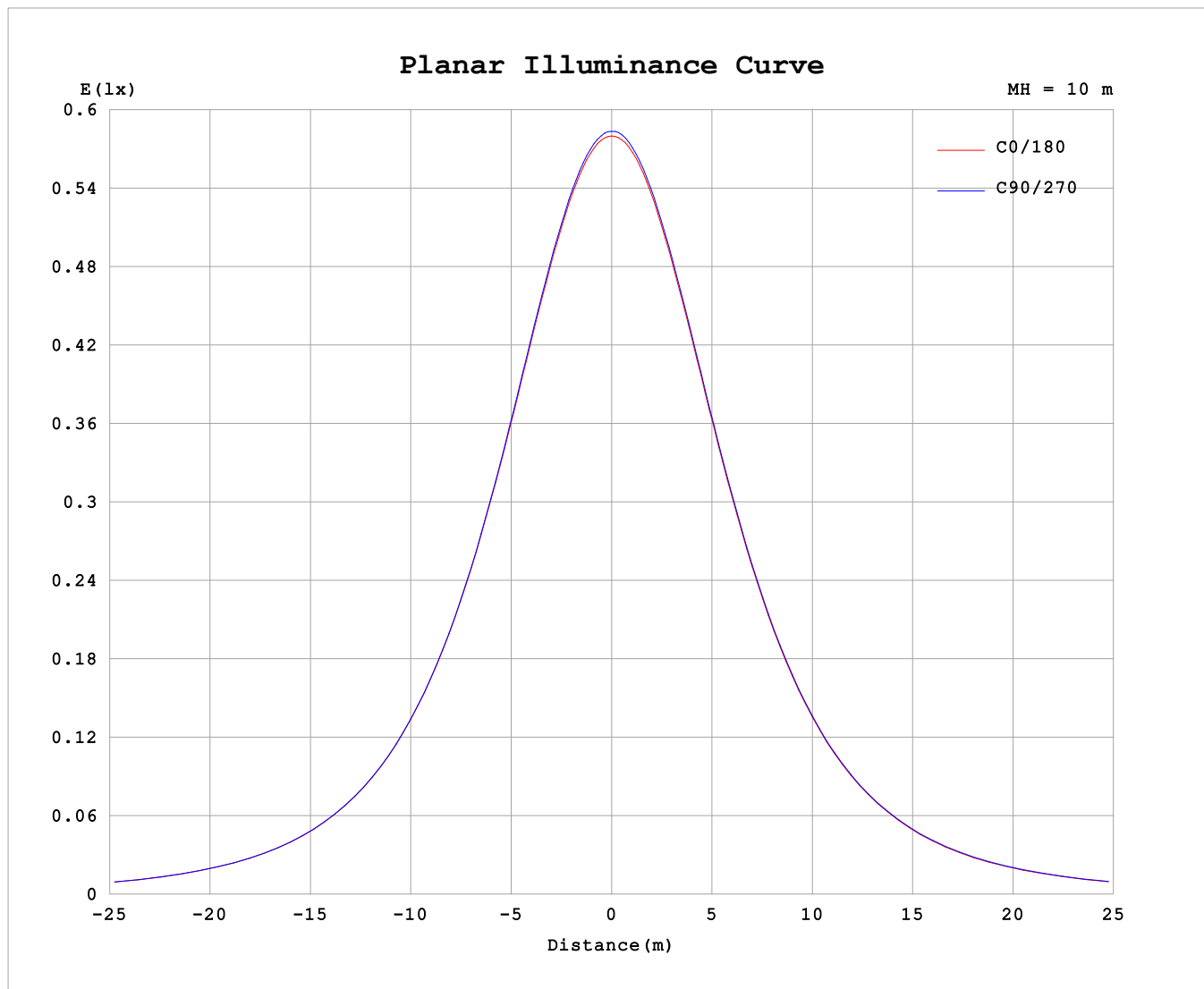
AvgL	cd/m2
L_0~180 (65) av	4335
L_0~180 (75) av	4111
L_0~180 (85) av	4318
L_90~270 (65) av	4343
L_90~270 (75) av	4166
L_90~270 (85) av	4273
L_45 (65) av	4371
L_45 (75) av	4189
L_45 (85) av	4389

Standard: GB/T 29293-2012

C Range: 0 - 360DEG  
C Interval: 30.0DEG  
Test Speed: HIGH  
Temperature:25.3℃  
Operators:  
Test Date:2025-03-06

γ Range: 0 - 180DEG  
γ Interval: 1.0DEG  
Test System:EVERFINE GO-2000B\_V1 SYSTEM V2.00.488  
Humidity:65.0%  
Test Distance:6.360m [K=1.0000]  
Remarks:

## Planar Illuminance Curve



C Range: 0 - 360DEG  
C Interval: 30.0DEG  
Test Speed: HIGH  
Temperature: 25.3 °C  
Operators:  
Test Date: 2025-03-06

$\gamma$  Range: 0 - 180DEG  
 $\gamma$  Interval: 1.0DEG  
Test System: EVERFINE GO-2000B\_V1 SYSTEM V2.00.488  
Humidity: 65.0%  
Test Distance: 6.360m [K=1.0000]  
Remarks:

## LUMINOUS DISTRIBUTION INTENSITY DATA

Test:U:24.00V I:0.4753A P:11.41W PF:1.000 Freq:0Hz Lamp Flux:176.459x1 lm																	
NAME: SF15-24V-5050-70-SPI-RGBW(2700K)-W									TYPE:			WEIGHT:					
SPEC.:									DIM.: Length=1m			SERIAL No.:					
MFR.: OLYMPIA lighting									SUR.:			Shielding Angle:					

Table--1

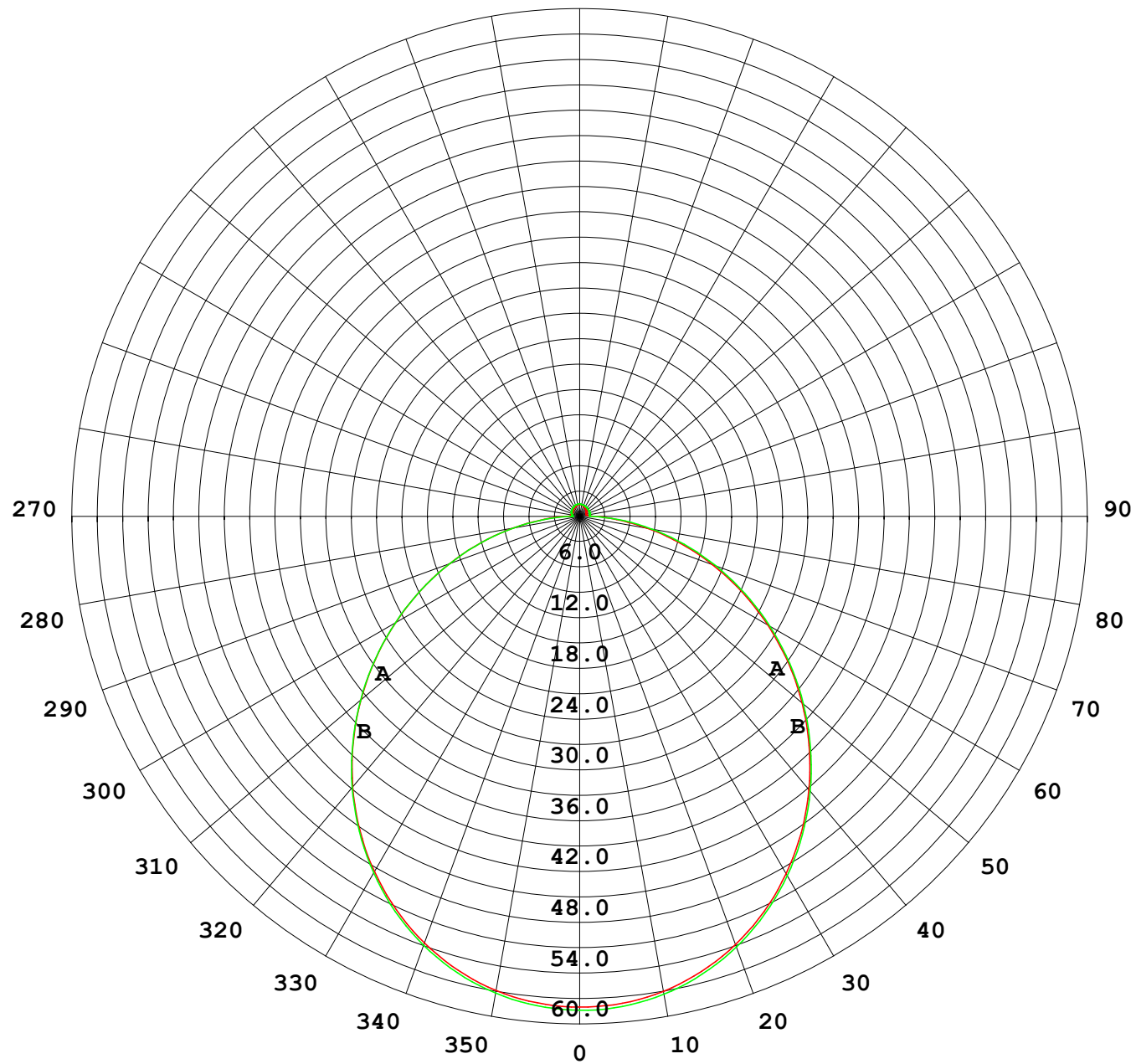
UNIT: cd

C (DEG) γ (DEG)	0	30	60	90	120	150	180	210	240	270	300	330						
0	58.3	58.3	58.3	58.3	58.3	58.3	58.3	58.3	58.3	58.3	58.3	58.3						
5	58.0	58.0	58.0	58.0	58.0	58.0	58.1	58.1	58.1	58.1	58.1	58.1						
10	57.2	57.2	57.2	57.2	57.2	57.3	57.3	57.3	57.3	57.3	57.3	57.3						
15	55.8	55.9	55.8	55.8	55.8	55.9	56.0	56.0	56.0	56.0	56.0	56.0						
20	53.9	54.0	54.0	53.9	54.0	54.1	54.1	54.2	54.2	54.1	54.1	54.1						
25	51.6	51.6	51.6	51.5	51.6	51.7	51.8	51.9	52.0	51.8	51.8	51.7						
30	48.8	48.8	48.8	48.6	48.8	48.9	49.0	49.2	49.2	49.0	49.0	49.0						
35	45.5	45.6	45.5	45.4	45.6	45.7	45.9	46.1	46.1	45.9	45.9	45.8						
40	41.9	42.0	42.0	41.8	42.0	42.2	42.4	42.6	42.6	42.3	42.3	42.2						
45	38.0	38.1	38.1	37.9	38.1	38.3	38.6	38.8	38.8	38.5	38.5	38.3						
50	33.9	34.0	34.0	33.8	34.0	34.2	34.5	34.7	34.8	34.5	34.5	34.2						
55	29.6	29.7	29.7	29.5	29.7	29.9	30.2	30.5	30.6	30.3	30.3	30.0						
60	25.2	25.3	25.3	25.1	25.3	25.5	25.8	26.0	26.2	25.9	25.9	25.6						
65	20.8	20.9	20.9	20.7	20.8	21.0	21.3	21.6	21.8	21.5	21.5	21.2						
70	16.4	16.5	16.5	16.3	16.4	16.5	16.8	17.0	17.4	17.1	17.1	16.8						
75	12.1	12.2	12.3	12.0	12.0	12.1	12.4	12.6	13.0	12.8	12.8	12.5						
80	7.96	8.07	8.14	7.87	7.85	7.90	8.13	8.34	8.78	8.60	8.73	8.37						
85	4.22	4.24	4.23	3.93	3.89	4.16	4.43	4.54	4.74	4.63	4.82	4.49						
90	1.67	1.63	1.35	0.83	1.23	1.67	1.89	1.91	1.78	1.24	1.74	1.74						
95	1.09	1.10	1.09	0.88	0.93	1.06	1.10	1.19	1.22	1.19	1.25	1.10						
100	1.06	1.07	1.02	0.94	0.89	0.92	0.90	1.00	1.18	1.22	1.21	1.05						
105	1.04	1.06	1.00	1.00	0.94	0.92	0.80	0.92	1.21	1.25	1.20	1.03						
110	1.01	1.05	1.00	1.06	1.00	0.96	0.84	0.94	1.23	1.27	1.21	1.00						
115	1.00	1.05	1.02	1.10	1.06	1.01	0.88	0.99	1.26	1.29	1.22	0.99						
120	1.02	1.07	1.06	1.15	1.11	1.06	0.93	1.03	1.28	1.30	1.22	1.02						
125	1.06	1.09	1.09	1.18	1.16	1.11	0.97	1.07	1.29	1.31	1.24	1.05						
130	1.10	1.10	1.15	1.22	1.20	1.15	1.02	1.10	1.31	1.33	1.25	1.10						
135	1.14	1.13	1.20	1.26	1.24	1.20	1.07	1.14	1.32	1.33	1.27	1.11						
140	1.17	1.18	1.25	1.30	1.28	1.25	1.11	1.17	1.34	1.34	1.29	1.14						
145	1.20	1.24	1.29	1.34	1.32	1.29	1.16	1.21	1.36	1.35	1.31	1.18						
150	1.23	1.29	1.32	1.38	1.35	1.33	1.22	1.25	1.38	1.38	1.33	1.21						
155	1.28	1.33	1.36	1.42	1.38	1.37	1.27	1.29	1.39	1.39	1.37	1.25						
160	1.34	1.37	1.39	1.44	1.40	1.40	1.32	1.33	1.41	1.40	1.40	1.29						
165	1.38	1.40	1.42	1.46	1.43	1.43	1.37	1.37	1.43	1.42	1.42	1.33						
170	1.40	1.43	1.44	1.47	1.44	1.46	1.40	1.40	1.44	1.44	1.44	1.40						
175	1.42	1.45	1.45	1.47	1.46	1.46	1.43	1.43	1.46	1.45	1.45	1.43						
180	1.44	1.45	1.46	1.47	1.46	1.46	1.43	1.45	1.46	1.47	1.47	1.46						

C Range: 0 - 360DEG  
C Interval: 30.0DEG  
Test Speed: HIGH  
Temperature:25.3℃  
Operators:  
Test Date:2025-03-06

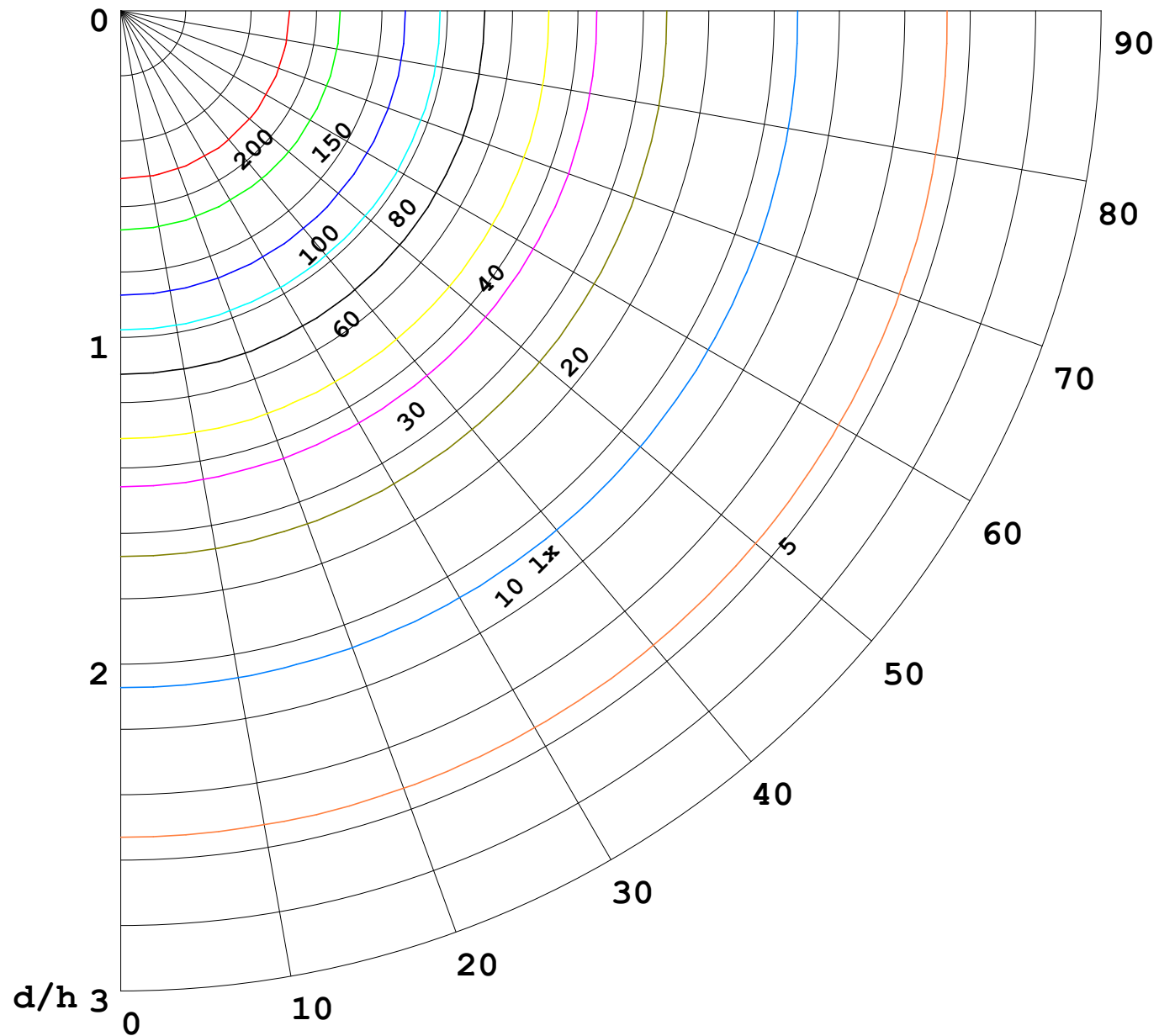
γ Range: 0 - 180DEG  
γ Interval: 1.0DEG  
Test System:EVERFINE GO-2000B\_V1 SYSTEM V2.00.488  
Humidity:65.0%  
Test Distance:6.360m [K=1.0000]  
Remarks:

I (cd)



1000 lm

$\kappa = 1$



F = 1000 lm  
 K = 0.7  
 Hcc = 0.8 m  
 Hfc = 0.0 m  
 Eave = 100 lx

	Pcc	Pw	Pfc
—————	70	50	30
—————	50	30	20

