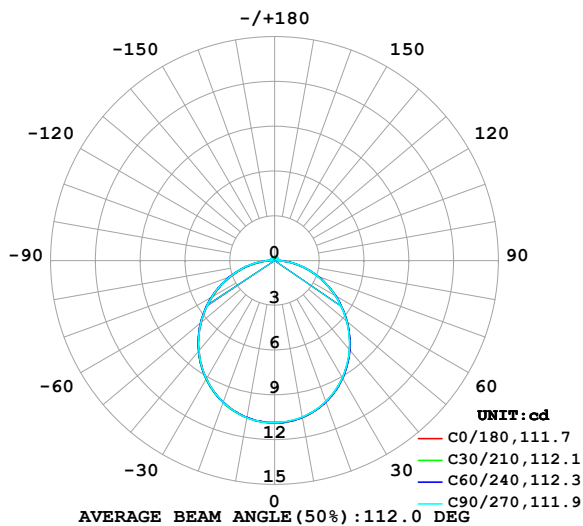


LUMINAIRE PHOTOMETRIC TEST REPORT

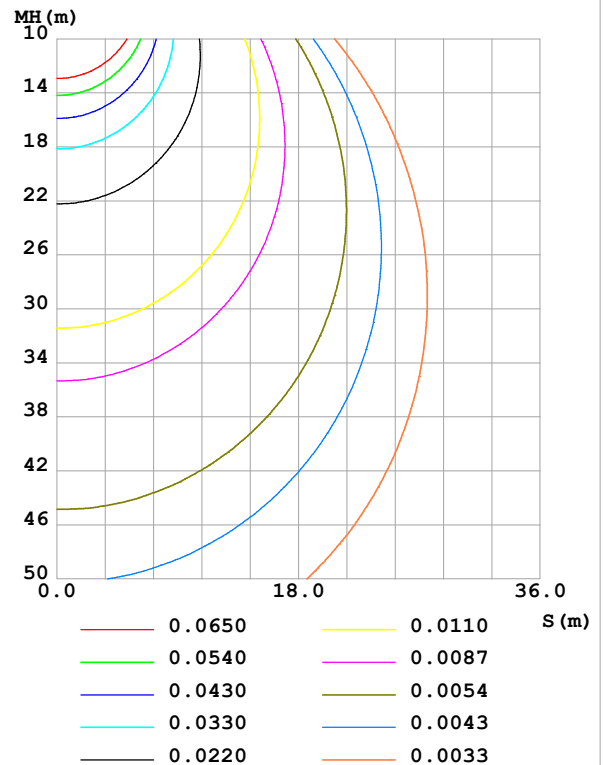
Test:U:24.00V I:0.4788A P:11.49W PF:1.000 Freq:0Hz Lamp Flux:32.9362x1 lm		
NAME: SF15-24V-5050-70-SPI-RGBW(2700K)-B	TYPE:	WEIGHT:
SPEC.:	DIM.: Length=1m	SERIAL No.:
MFR.: OLympia lighting	SUR.:	Shielding Angle:

DATA OF LAMP		PHOTOMETRIC DATA				Eff: 2.87 lm/W
MODEL	5050	I _{max} (cd)	10.86	S/MH(C0/180)	1.25	
NOMINAL POWER(W)		LOR(%)	100.0	S/MH(C90/270)	1.25	
RATED VOLTAGE(V)	24	TOTAL FLUX(lm)	32.952	η UP,DN(C0-180)	2.0,47.4	
NOMINAL FLUX(lm)	32.9362	CIE CLASS	DIRECT	η UP,DN(C180-360)	2.2,48.3	
LAMPS INSIDE	1	η up (%)	4.3	CIBSE SHR NOM	1.25	
TEST VOLTAGE(V)		η down (%)	95.8	CIBSE SHR MAX	1.35	

LUMINOUS INTENSITY DISTRIBUTION DIAGRAM



C0 PLANE ISOLUX DIAGRAM (UNIT:lx)



C Range: 0 - 360DEG
C Interval: 30.0DEG
Test Speed: HIGH
Temperature:25.3℃
Operators:
Test Date:2025-03-06

γ Range: 0 - 180DEG
γ Interval: 1.0DEG
Test System:EVERFINE GO-2000B_V1 SYSTEM V2.00.488
Humidity:65.0%
Test Distance:6.360m [K=1.0000]
Remarks:

ZONAL FLUX DIAGRAM

ZONAL FLUX DIAGRAM:

γ	C0	C45	C90	C135	C180	C225	C270	C315	γ	Φ zone	Φ total	%lum, lamp
10	10.68	10.67	10.64	10.67	10.67	10.69	10.69	10.68	0- 10	1.028	1.028	3.12,3.12
20	10.07	10.06	10.05	10.08	10.08	10.11	10.10	10.09	10- 20	2.942	3.970	12,12.1
30	9.092	9.097	9.087	9.119	9.144	9.179	9.149	9.134	20- 30	4.445	8.415	25.5,25.6
40	7.817	7.830	7.796	7.846	7.906	7.940	7.900	7.878	30- 40	5.336	13.75	41.7,41.7
50	6.316	6.334	6.299	6.356	6.428	6.476	6.446	6.406	40- 50	5.514	19.26	58.5,58.5
60	4.700	4.718	4.697	4.723	4.797	4.877	4.844	4.803	50- 60	4.998	24.26	73.6,73.7
70	3.046	3.075	3.078	3.057	3.115	3.211	3.213	3.172	60- 70	3.908	28.17	85.5,85.5
80	1.471	1.499	1.511	1.460	1.499	1.595	1.632	1.602	70- 80	2.448	30.62	92.9,93
90	0.3096	0.2687	0.3100	0.2656	0.3285	0.3552	0.2691	0.3419	80- 90	0.9253	31.54	95.7,95.8
100	0.1934	0.1940	0.2063	0.1743	0.1602	0.2281	0.2654	0.2417	90-100	0.2514	31.79	96.5,96.5
110	0.1934	0.1937	0.2093	0.1803	0.1593	0.2252	0.2616	0.2319	100-110	0.2187	32.01	97.2,97.2
120	0.1934	0.1954	0.2222	0.1956	0.1794	0.2267	0.2597	0.2297	110-120	0.2083	32.22	97.8,97.8
130	0.1934	0.2050	0.2330	0.2141	0.1957	0.2313	0.2597	0.2306	120-130	0.1939	32.42	98.4,98.4
140	0.2024	0.2269	0.2483	0.2308	0.2141	0.2365	0.2597	0.2338	130-140	0.1748	32.59	98.9,99
150	0.2155	0.2454	0.2684	0.2457	0.2309	0.2435	0.2597	0.2410	140-150	0.1496	32.74	99.4,99.4
160	0.2366	0.2586	0.2684	0.2538	0.2454	0.2490	0.2597	0.2471	150-160	0.1149	32.85	99.7,99.8
170	0.2510	0.2602	0.2668	0.2593	0.2504	0.2586	0.2597	0.2543	160-170	0.0722	32.93	99.9,100
180	0.2568	0.2613	0.2655	0.2640	0.2540	0.2613	0.2626	0.2611	170-180	0.0247	32.95	100,100
DEG	LUMINOUS INTENSITY:cd									UNIT:lm		

Conical surface Flux(90deg): 16.53 lm

%lum = 50.2%

%lamp = 50.2%

Conical surface Flux(130deg): 26.381 lm

%lum = 80.1%

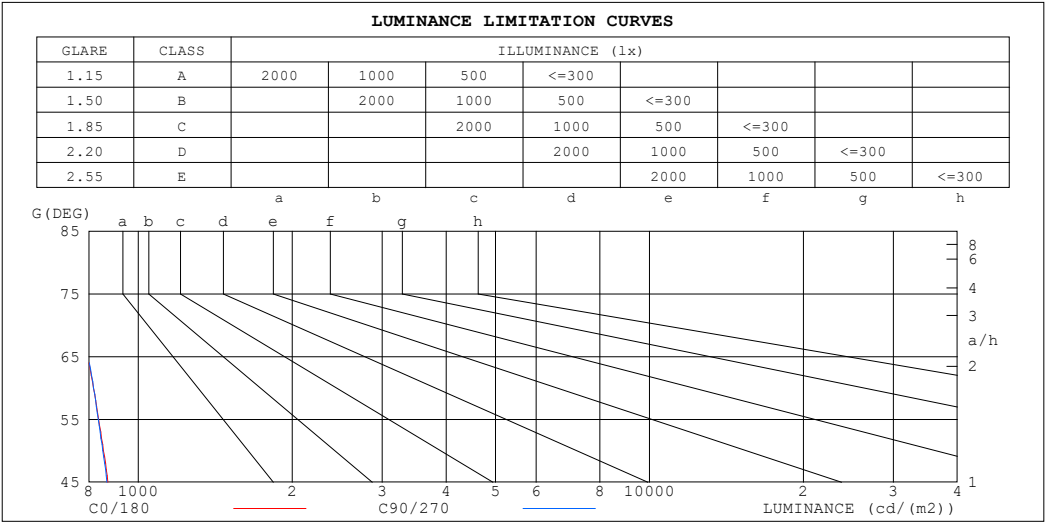
%lamp = 80.1%

C Range: 0 - 360DEG
 C Interval: 30.0DEG
 Test Speed: HIGH
 Temperature:25.3℃
 Operators:
 Test Date:2025-03-06

γ Range: 0 - 180DEG
 γ Interval: 1.0DEG
 Test System:EVERFINE GO-2000B_V1 SYSTEM V2.00.488
 Humidity:65.0%
 Test Distance:6.360m [K=1.0000]
 Remarks:

LUMINANCE LIMITATION CURVES

Test:U:24.00V I:0.4788A P:11.49W PF:1.000 Freq:0Hz Lamp Flux:32.9362x1 lm		
NAME: SF15-24V-5050-70-SPI-RGBW(2700K)-B	TYPE:	WEIGHT:
SPEC.:	DIM.: Length=1m	SERIAL No.:
MFR.: OLympia lighting	SUR.:	Shielding Angle:



LUMINANCE cd/(m2)		
G (DEG)	C0/180	C90/270
85	773	767
80	736	757
75	753	769
70	775	783
65	797	799
60	817	817
55	836	835
50	855	852
45	872	868

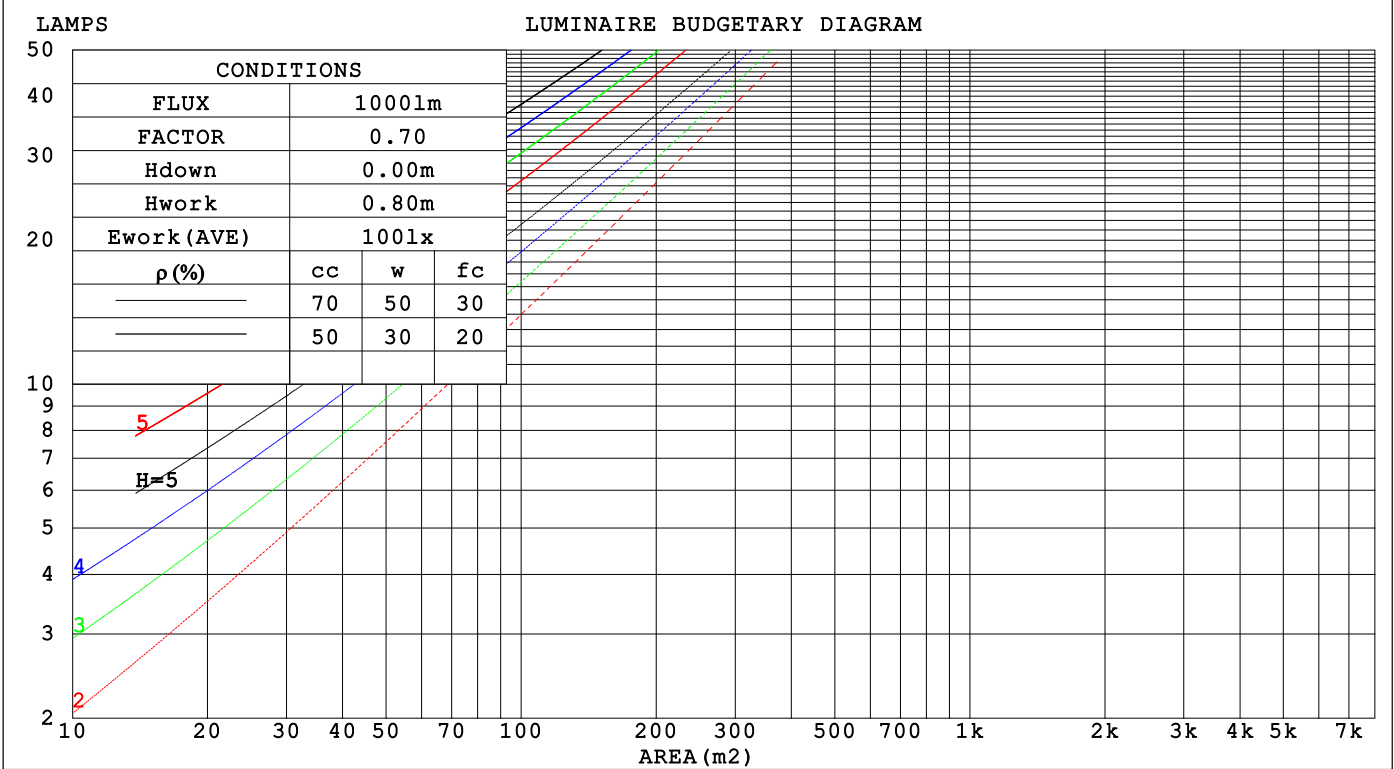
C Range: 0 - 360DEG
C Interval: 30.0DEG
Test Speed: HIGH
Temperature:25.3℃
Operators:
Test Date:2025-03-06

γ Range: 0 - 180DEG
γ Interval: 1.0DEG
Test System:EVERFINE GO-2000B_V1 SYSTEM V2.00.488
Humidity:65.0%
Test Distance:6.360m [K=1.0000]
Remarks:

CU AND LUMINAIRE BUDGETARY ESTIMATE DIAGRAM

Test:U:24.00V I:0.4788A P:11.49W PF:1.000 Freq:0Hz		
Lamp Flux:32.9362x1 lm		
NAME: SF15-24V-5050-70-SPI-RGBW(2700K)-B	TYPE:	WEIGHT:
SPEC.:	DIM.: Length=1m	SERIAL No.:
MFR.: OLYMPIA lighting	SUR.:	Shielding Angle:

pcc	80%			70%			50%			30%			10%			0
pw	50%	30%	10%	50%	30%	10%	50%	30%	10%	50%	30%	10%	50%	30%	10%	0
pfc	20%			20%			20%			20%			20%			0
RCR	RCR:Room Cavity Ratio															



C Range: 0 - 360DEG
C Interval: 30.0DEG
Test Speed: HIGH
Temperature:25.3℃
Operators:
Test Date:2025-03-06

γ Range: 0 - 180DEG
γ Interval: 1.0DEG
Test System:EVERFINE GO-2000B_V1 SYSTEM V2.00.488
Humidity:65.0%
Test Distance:6.360m [K=1.0000]
Remarks:

WEC AND CCEC

Test:U:24.00V I:0.4788A P:11.49W PF:1.000 Freq:0Hz Lamp Flux:32.9362x1 lm		
NAME: SF15-24V-5050-70-SPI-RGBW(2700K)-B	TYPE:	WEIGHT:
SPEC.:	DIM.: Length=1m	SERIAL No.:
MFR.: OLympia lighting	SUR.:	Shielding Angle:

pcc	80%			70%			50%			30%			10%			0														
pw	50%	30%	10%	50%	30%	10%	50%	30%	10%	50%	30%	10%	50%	30%	10%	0														
pfc	20%			20%			20%			20%			20%			0														
RCR	RCR:Room Cavity Ratio															Wall Exitance Coefficients(WEC)														
0.0																														
1.0	.322	.183	.058	.313	.179	.057	.298	.171	.055	.283	.163	.052	.270	.156	.050															
2.0	.298	.163	.050	.290	.160	.049	.276	.154	.048	.263	.148	.046	.251	.142	.045															
3.0	.273	.146	.044	.267	.143	.043	.254	.138	.042	.243	.133	.041	.232	.128	.040															
4.0	.251	.131	.038	.245	.128	.038	.234	.124	.037	.224	.120	.036	.214	.116	.035															
5.0	.231	.118	.034	.226	.116	.034	.216	.113	.033	.207	.109	.032	.198	.106	.032															
6.0	.214	.107	.031	.209	.106	.030	.201	.103	.030	.192	.100	.029	.184	.097	.029															
7.0	.199	.098	.028	.195	.097	.028	.187	.094	.027	.179	.092	.027	.172	.089	.026															
8.0	.186	.091	.026	.182	.090	.025	.175	.087	.025	.168	.085	.025	.161	.083	.024															
9.0	.174	.084	.023	.170	.083	.023	.164	.081	.023	.158	.079	.023	.152	.077	.022															
10.0	.163	.078	.022	.160	.077	.022	.154	.076	.021	.148	.074	.021	.143	.072	.021															

pcc	80%			70%			50%			30%			10%			0
pw	50%	30%	10%	50%	30%	10%	50%	30%	10%	50%	30%	10%	50%	30%	10%	0
pfc	20%			20%			20%			20%			20%			0
RCR	RCR:Room Cavity Ratio						Ceiling Cavity Exitance Coefficients (CCEC)									
0.0	.223	.223	.223	.191	.191	.191	.130	.130	.130	.075	.075	.075	.024	.024	.024	
1.0	.214	.189	.166	.183	.162	.143	.125	.112	.099	.072	.065	.058	.023	.021	.019	
2.0	.206	.165	.130	.177	.142	.113	.121	.098	.079	.070	.057	.046	.022	.018	.015	
3.0	.198	.148	.107	.170	.127	.093	.117	.088	.065	.067	.052	.038	.022	.017	.013	
4.0	.191	.134	.091	.164	.116	.079	.113	.081	.056	.065	.047	.033	.021	.015	.011	
5.0	.183	.124	.081	.157	.107	.070	.108	.075	.049	.063	.044	.029	.020	.014	.010	
6.0	.176	.116	.073	.151	.100	.063	.104	.070	.045	.061	.041	.027	.020	.014	.009	
7.0	.169	.109	.067	.146	.095	.058	.101	.066	.041	.058	.039	.025	.019	.013	.008	
8.0	.163	.103	.062	.140	.090	.054	.097	.063	.039	.056	.037	.023	.018	.012	.008	
9.0	.157	.098	.059	.135	.085	.052	.094	.060	.037	.054	.035	.022	.018	.012	.007	
10.0	.151	.094	.056	.130	.082	.049	.090	.058	.035	.053	.034	.021	.017	.011	.007	

C Range: 0 - 360DEG
C Interval: 30.0DEG
Test Speed: HIGH
Temperature:25.3℃
Operators:
Test Date:2025-03-06

γ Range: 0 - 180DEG
γ Interval: 1.0DEG
Test System:EVERFINE GO-2000B_V1 SYSTEM V2.00.488
Humidity:65.0%
Test Distance:6.360m [K=1.0000]
Remarks:

UGR(Unified Glare Rating) Table

Test:U:24.00V I:0.4788A P:11.49W PF:1.000 Freq:0Hz Lamp Flux:32.9362x1 lm											
NAME: SF15-24V-5050-70-SPI-RGBW(2700K)-B						TYPE:		WEIGHT:			
SPEC.:						DIM.: Length=1m		SERIAL No.:			
MFR.: OLympia lighting						SUR.:		Shielding Angle:			
ceiling/cavity	0.7	0.7	0.5	0.5	0.3	0.7	0.7	0.5	0.5	0.3	
walls	0.5	0.3	0.5	0.3	0.3	0.5	0.3	0.5	0.3	0.3	
working plane	0.2	0.2	0.2	0.2	0.2	0.2	0.2	0.2	0.2	0.2	
Room dimensions		Viewed crosswise					Viewed endwise				
x = 2H y = 2H	23.6	25.1	24.0	25.4	25.7	23.7	25.1	24.0	25.4	25.7	
	3H	25.2	26.6	25.6	26.9	27.2	25.3	26.6	25.6	26.9	27.3
	4H	25.9	27.2	26.3	27.5	27.9	26.0	27.3	26.3	27.6	27.9
	6H	26.5	27.7	26.9	28.0	28.4	26.5	27.8	26.9	28.1	28.5
	8H	26.7	27.9	27.1	28.2	28.6	26.8	27.9	27.2	28.3	28.7
	12H	26.8	28.0	27.3	28.3	28.7	26.9	28.1	27.3	28.4	28.8
4H	2H	24.3	25.6	24.6	25.9	26.2	24.3	25.6	24.6	25.9	26.2
	3H	26.0	27.2	26.5	27.5	27.9	26.1	27.2	26.5	27.6	28.0
	4H	26.9	27.9	27.3	28.3	28.7	26.9	28.0	27.4	28.4	28.8
	6H	27.6	28.5	28.0	28.9	29.4	27.6	28.6	28.1	29.0	29.4
	8H	27.8	28.7	28.3	29.1	29.6	27.9	28.8	28.4	29.2	29.7
	12H	28.1	28.8	28.5	29.3	29.8	28.2	28.9	28.6	29.4	29.9
8H	4H	27.2	28.0	27.7	28.5	29.0	27.2	28.1	27.7	28.5	29.0
	6H	28.0	28.8	28.6	29.2	29.8	28.1	28.8	28.6	29.3	29.8
	8H	28.4	29.1	28.9	29.6	30.1	28.5	29.2	29.1	29.7	30.2
	12H	28.8	29.3	29.3	29.8	30.4	28.9	29.4	29.4	29.9	30.5
12H	4H	27.2	28.0	27.7	28.5	29.0	27.2	28.0	27.7	28.5	29.0
	6H	28.1	28.8	28.7	29.3	29.8	28.2	28.8	28.7	29.3	29.9
	8H	28.6	29.1	29.1	29.6	30.2	28.7	29.2	29.2	29.7	30.3
Variations with the observer position at spacings(CIE Pub.117):											
S = 1.0H	+ 0.1 / - 0.2					+ 0.1 / - 0.2					
1.5H	+ 0.2 / - 0.3					+ 0.2 / - 0.3					
2.0H	+ 0.1 / - 0.3					+ 0.1 / - 0.3					

CIE Pub.117, 32.94 lm Total Lamp Luminous Flux Correct (8log(F/F0) = -11.9)
Area: 0.0115 m2

C Range: 0 - 360DEG
C Interval: 30.0DEG
Test Speed: HIGH
Temperature:25.3℃
Operators:
Test Date:2025-03-06

γ Range: 0 - 180DEG
γ Interval: 1.0DEG
Test System:EVERFINE GO-2000B_V1 SYSTEM V2.00.488
Humidity:65.0%
Test Distance:6.360m [K=1.0000]
Remarks:

UTILIZATION FACTORS TABLE

Test:U:24.00V I:0.4788A P:11.49W PF:1.000 Freq:0Hz Lamp Flux:32.9362x1 lm		
NAME: SF15-24V-5050-70-SPI-RGBW(2700K)-B	TYPE:	WEIGHT:
SPEC.:	DIM.: Length=1m	SERIAL No.:
MFR.: OLympia lighting	SUR.:	Shielding Angle:

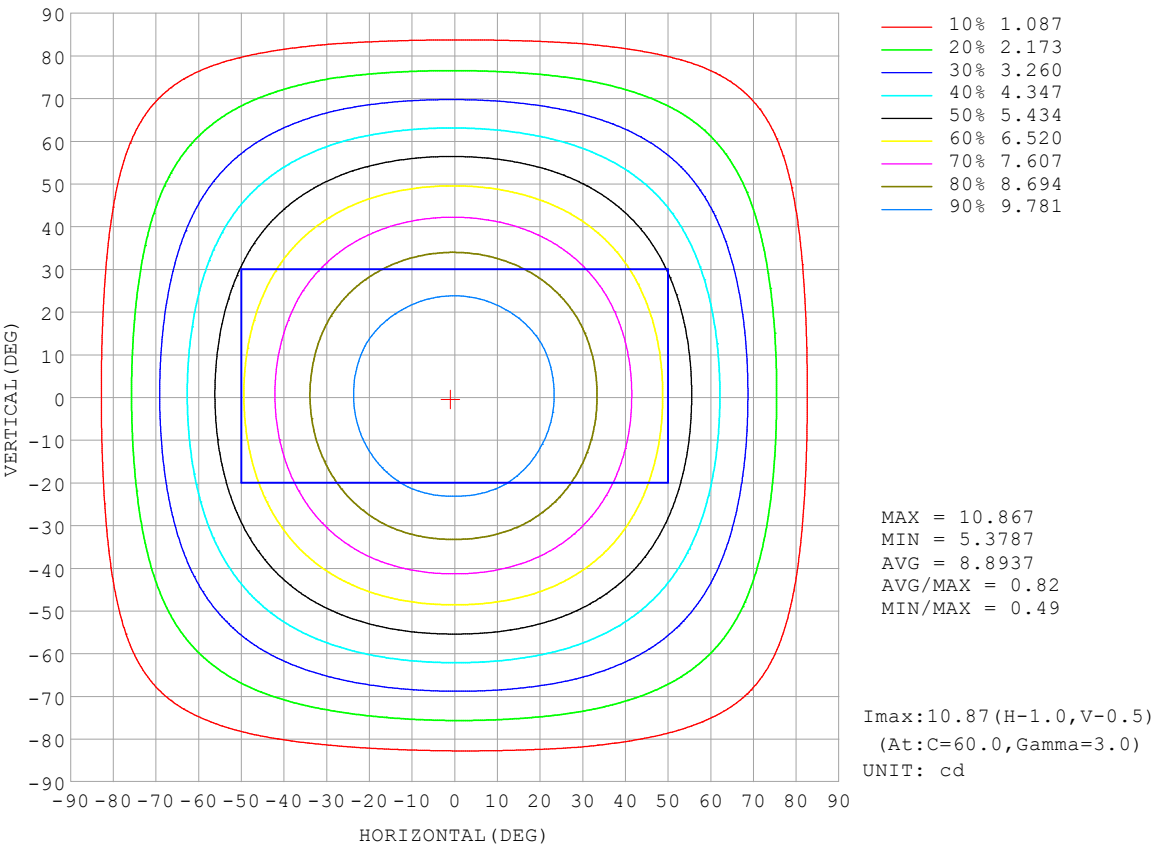
REFLECTANCE										
Ceiling	0.8	0.8	0.8	0.7	0.7	0.7	0.5	0.5	0.5	0
Walls	0.7	0.5	0.3	0.7	0.5	0.3	0.7	0.5	0.3	0
Working plane	0.2	0.2	0.2	0.2	0.2	0.2	0.2	0.2	0.2	0
ROOM INDEX	UTILIZATION FACTORS (PERCENT) $k(RI) \times RCR = 5$									
$k = 0.60$	56	44	37	55	44	37	54	43	37	30
0.80	66	54	46	64	53	46	62	52	46	38
1.00	74	63	55	73	62	55	70	63	54	46
1.25	81	70	63	79	69	62	76	67	61	53
1.50	86	76	68	84	75	68	81	72	66	58
2.00	93	84	77	91	82	76	87	80	74	66
2.50	97	89	82	95	87	81	90	84	79	70
3.00	100	93	87	98	91	86	93	88	83	74
4.00	104	98	93	102	96	92	97	92	88	78
5.00	107	102	97	104	99	96	99	95	92	81
ROOM INDEX	UF (total)									Direct
According to DIN EN 13032-2 2004			Suspended					SHRNOM = 1.25		

C Range: 0 - 360DEG
 C Interval: 30.0DEG
 Test Speed: HIGH
 Temperature: 25.3 °C
 Operators:
 Test Date: 2025-03-06

γ Range: 0 - 180DEG
 γ Interval: 1.0DEG
 Test System: EVERFINE GO-2000B_V1 SYSTEM V2.00.488
 Humidity: 65.0%
 Test Distance: 6.360m [K=1.0000]
 Remarks:

ISOCANDELA DIAGRAM

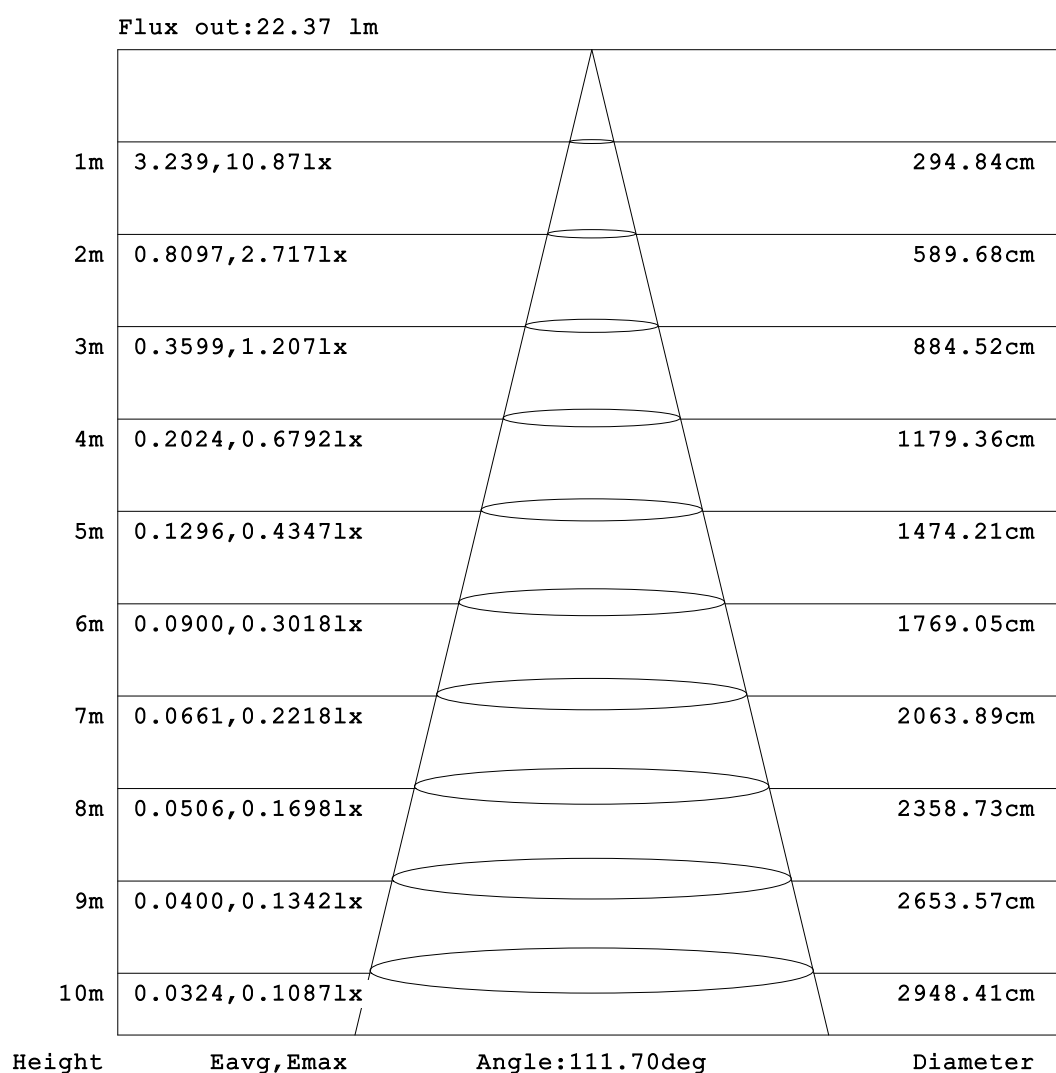
Test:U:24.00V I:0.4788A P:11.49W PF:1.000 Freq:0Hz Lamp Flux:32.9362x1 lm		
NAME: SF15-24V-5050-70-SPI-RGBW(2700K)-B	TYPE:	WEIGHT:
SPEC.:	DIM.: Length=1m	SERIAL No.:
MFR.: OLympia lighting	SUR.:	Shielding Angle:



C Range: 0 - 360DEG	γ Range: 0 - 180DEG
C Interval: 30.0DEG	γ Interval: 1.0DEG
Test Speed: HIGH	Test System:EVERFINE GO-2000B_V1 SYSTEM V2.00.488
Temperature:25.3℃	Humidity:65.0%
Operators:	Test Distance:6.360m [K=1.0000]
Test Date:2025-03-06	Remarks:

AAI Figure

Test:U:24.00V I:0.4788A P:11.49W PF:1.000 Freq:0Hz Lamp Flux:32.9362x1 lm		
NAME: SF15-24V-5050-70-SPI-RGBW(2700K)-B	TYPE:	WEIGHT:
SPEC.:	DIM.: Length=1m	SERIAL No.:
MFR.: OLympia lighting	SUR.:	Shielding Angle:



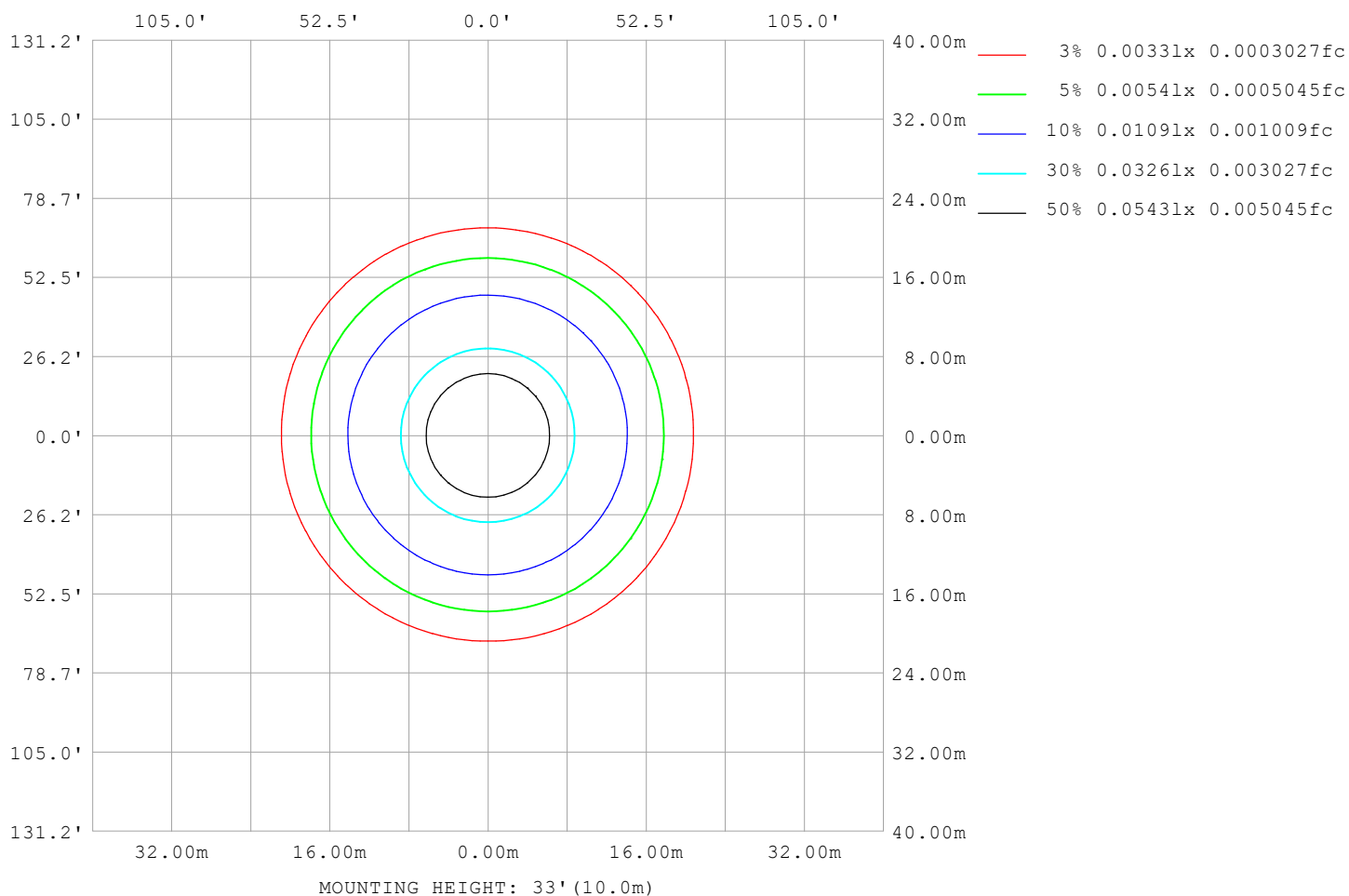
Note:The Curves indicate the illuminated area and the average illumination when the luminaire is at different distance.

C Range: 0 - 360DEG
C Interval: 30.0DEG
Test Speed: HIGH
Temperature:25.3℃
Operators:
Test Date:2025-03-06

γ Range: 0 - 180DEG
γ Interval: 1.0DEG
Test System:EVERFINE GO-2000B_V1 SYSTEM V2.00.488
Humidity:65.0%
Test Distance:6.360m [K=1.0000]
Remarks:

ISOLUX DIAGRAM

Test:U:24.00V I:0.4788A P:11.49W PF:1.000 Freq:0Hz Lamp Flux:32.9362x1 lm		
NAME: SF15-24V-5050-70-SPI-RGBW(2700K)-B	TYPE:	WEIGHT:
SPEC.:	DIM.: Length=1m	SERIAL No.:
MFR.: OLympia lighting	SUR.:	Shielding Angle:



C Range: 0 - 360DEG
C Interval: 30.0DEG
Test Speed: HIGH
Temperature: 25.3°C
Operators:
Test Date: 2025-03-06

γ Range: 0 - 180DEG
γ Interval: 1.0DEG
Test System: EVERFINE GO-2000B_V1 SYSTEM V2.00.488
Humidity: 65.0%
Test Distance: 6.360m [K=1.0000]
Remarks:

LED Avg.L Report

Test:U:24.00V I:0.4788A P:11.49W PF:1.000 Freq:0Hz Lamp Flux:32.9362x1 lm		
NAME: SF15-24V-5050-70-SPI-RGBW(2700K)-B	TYPE:	WEIGHT:
SPEC.:	DIM.: Length=1m	SERIAL No.:
MFR.: OLympia lighting	SUR.:	Shielding Angle:

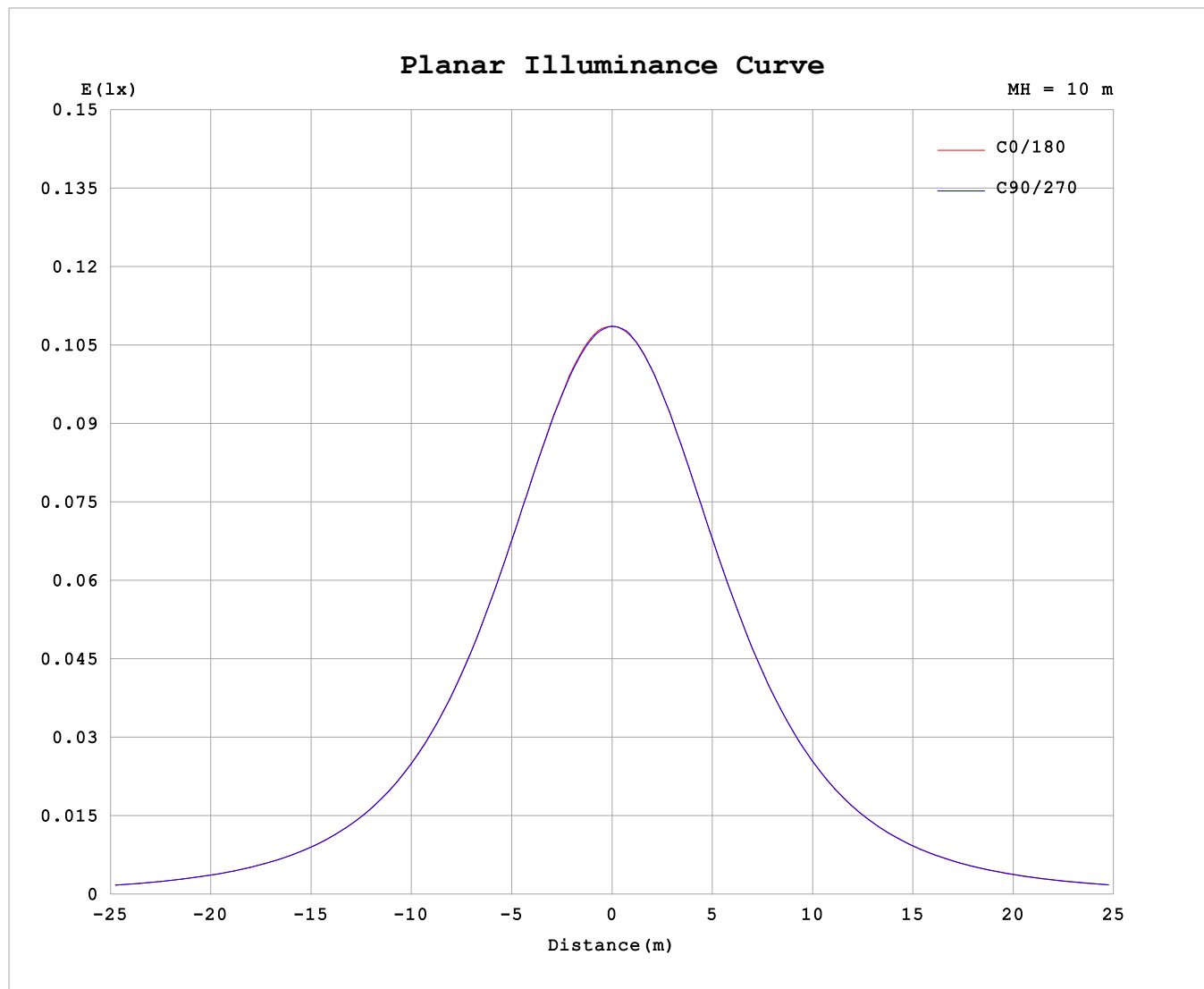
AvgL	cd/m2
L_0~180 (65) av	805
L_0~180 (75) av	761
L_0~180 (85) av	789
L_90~270 (65) av	814
L_90~270 (75) av	789
L_90~270 (85) av	832
L_45 (65) av	813
L_45 (75) av	781
L_45 (85) av	822

Standard: GB/T 29293-2012

C Range: 0 - 360DEG
C Interval: 30.0DEG
Test Speed: HIGH
Temperature:25.3℃
Operators:
Test Date:2025-03-06

γ Range: 0 - 180DEG
γ Interval: 1.0DEG
Test System:EVERFINE GO-2000B_V1 SYSTEM V2.00.488
Humidity:65.0%
Test Distance:6.360m [K=1.0000]
Remarks:

Planar Illuminance Curve



C Range: 0 - 360DEG
C Interval: 30.0DEG
Test Speed: HIGH
Temperature: 25.3 °C
Operators:
Test Date: 2025-03-06

γ Range: 0 - 180DEG
 γ Interval: 1.0DEG
Test System: EVERFINE GO-2000B_V1 SYSTEM V2.00.488
Humidity: 65.0%
Test Distance: 6.360m [K=1.0000]
Remarks:

LUMINOUS DISTRIBUTION INTENSITY DATA

Test:U:24.00V I:0.4788A P:11.49W PF:1.000 Freq:0Hz Lamp Flux:32.9362x1 lm											
NAME: SF15-24V-5050-70-SPI-RGBW(2700K)-B						TYPE:			WEIGHT:		
SPEC.:						DIM.: Length=1m			SERIAL No.:		
MFR.: OLYMPIA lighting						SUR.:			Shielding Angle:		

Table--1

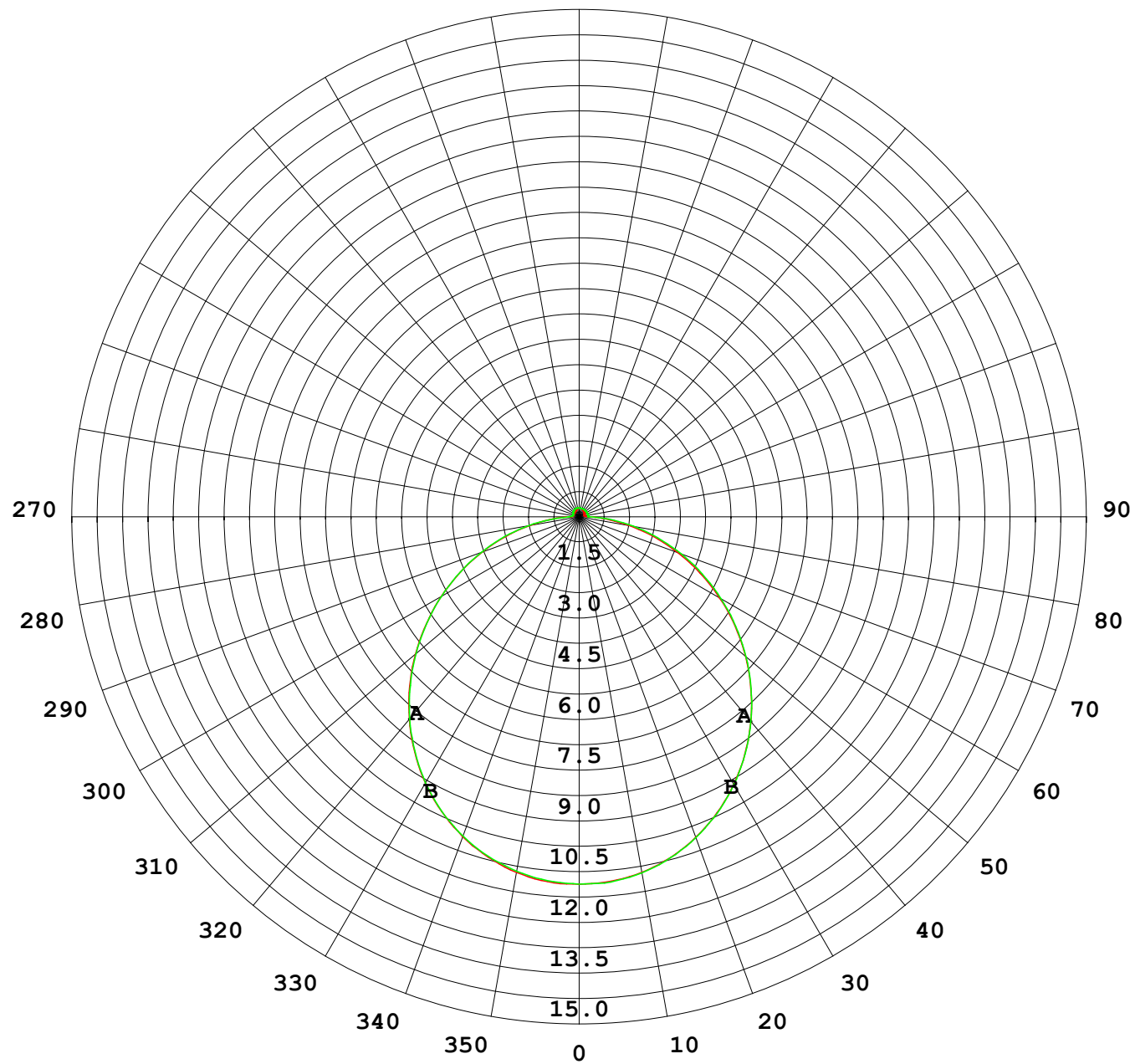
UNIT: cd

C (DEG) γ (DEG)	0	30	60	90	120	150	180	210	240	270	300	330							
0	10.9	10.9	10.9	10.9	10.9	10.9	10.9	10.9	10.9	10.9	10.9	10.9							
5	10.8	10.8	10.8	10.8	10.8	10.8	10.8	10.8	10.8	10.8	10.8	10.8							
10	10.7	10.7	10.7	10.6	10.7	10.7	10.7	10.7	10.7	10.7	10.7	10.7							
15	10.4	10.4	10.4	10.4	10.4	10.4	10.4	10.5	10.4	10.4	10.4	10.4							
20	10.1	10.1	10.1	10.0	10.1	10.1	10.1	10.1	10.1	10.1	10.1	10.1							
25	9.62	9.61	9.64	9.61	9.65	9.64	9.66	9.70	9.68	9.67	9.65	9.66							
30	9.09	9.09	9.11	9.09	9.12	9.12	9.14	9.19	9.17	9.15	9.13	9.14							
35	8.49	8.49	8.50	8.47	8.52	8.51	8.56	8.60	8.59	8.56	8.54	8.54							
40	7.82	7.82	7.84	7.80	7.84	7.85	7.91	7.95	7.93	7.90	7.89	7.87							
45	7.09	7.09	7.10	7.06	7.11	7.13	7.18	7.23	7.23	7.19	7.18	7.15							
50	6.32	6.33	6.34	6.30	6.35	6.37	6.43	6.48	6.47	6.45	6.43	6.38							
55	5.52	5.52	5.55	5.51	5.54	5.57	5.63	5.68	5.70	5.66	5.63	5.59							
60	4.70	4.70	4.73	4.70	4.71	4.73	4.80	4.86	4.89	4.84	4.83	4.78							
65	3.87	3.88	3.91	3.88	3.88	3.89	3.95	4.02	4.06	4.02	4.00	3.96							
70	3.05	3.05	3.10	3.08	3.06	3.05	3.11	3.17	3.25	3.21	3.20	3.15							
75	2.24	2.25	2.30	2.29	2.25	2.24	2.29	2.35	2.44	2.41	2.40	2.34							
80	1.47	1.48	1.52	1.51	1.47	1.45	1.50	1.55	1.64	1.63	1.64	1.57							
85	0.77	0.77	0.80	0.77	0.74	0.76	0.81	0.86	0.89	0.90	0.91	0.85							
90	0.31	0.28	0.26	0.31	0.24	0.29	0.33	0.37	0.34	0.27	0.33	0.35							
95	0.20	0.19	0.21	0.23	0.18	0.18	0.19	0.24	0.25	0.27	0.27	0.23							
100	0.19	0.19	0.20	0.21	0.17	0.17	0.16	0.21	0.25	0.27	0.27	0.22							
105	0.19	0.19	0.20	0.20	0.17	0.18	0.16	0.19	0.26	0.26	0.26	0.21							
110	0.19	0.19	0.20	0.21	0.18	0.18	0.16	0.19	0.26	0.26	0.26	0.20							
115	0.19	0.19	0.19	0.22	0.19	0.19	0.17	0.19	0.26	0.26	0.26	0.20							
120	0.19	0.20	0.19	0.22	0.19	0.20	0.18	0.19	0.26	0.26	0.26	0.20							
125	0.19	0.20	0.19	0.23	0.20	0.21	0.19	0.19	0.26	0.26	0.26	0.20							
130	0.19	0.21	0.20	0.23	0.21	0.22	0.20	0.20	0.26	0.26	0.26	0.20							
135	0.20	0.22	0.21	0.24	0.22	0.23	0.21	0.21	0.26	0.26	0.26	0.21							
140	0.20	0.23	0.22	0.25	0.23	0.23	0.21	0.21	0.26	0.26	0.26	0.21							
145	0.21	0.24	0.23	0.26	0.24	0.24	0.22	0.22	0.26	0.26	0.26	0.21							
150	0.22	0.25	0.24	0.27	0.24	0.25	0.23	0.22	0.26	0.26	0.26	0.22							
155	0.23	0.25	0.25	0.27	0.24	0.26	0.24	0.23	0.26	0.26	0.26	0.22							
160	0.24	0.26	0.26	0.27	0.25	0.26	0.25	0.23	0.26	0.26	0.26	0.23							
165	0.24	0.26	0.26	0.27	0.25	0.26	0.25	0.25	0.26	0.26	0.26	0.24							
170	0.25	0.26	0.26	0.27	0.26	0.26	0.25	0.25	0.27	0.26	0.26	0.25							
175	0.25	0.26	0.26	0.27	0.26	0.26	0.25	0.25	0.27	0.26	0.26	0.25							
180	0.26	0.26	0.26	0.27	0.26	0.27	0.25	0.26	0.27	0.26	0.26	0.26							

C Range: 0 - 360DEG
C Interval: 30.0DEG
Test Speed: HIGH
Temperature:25.3℃
Operators:
Test Date:2025-03-06

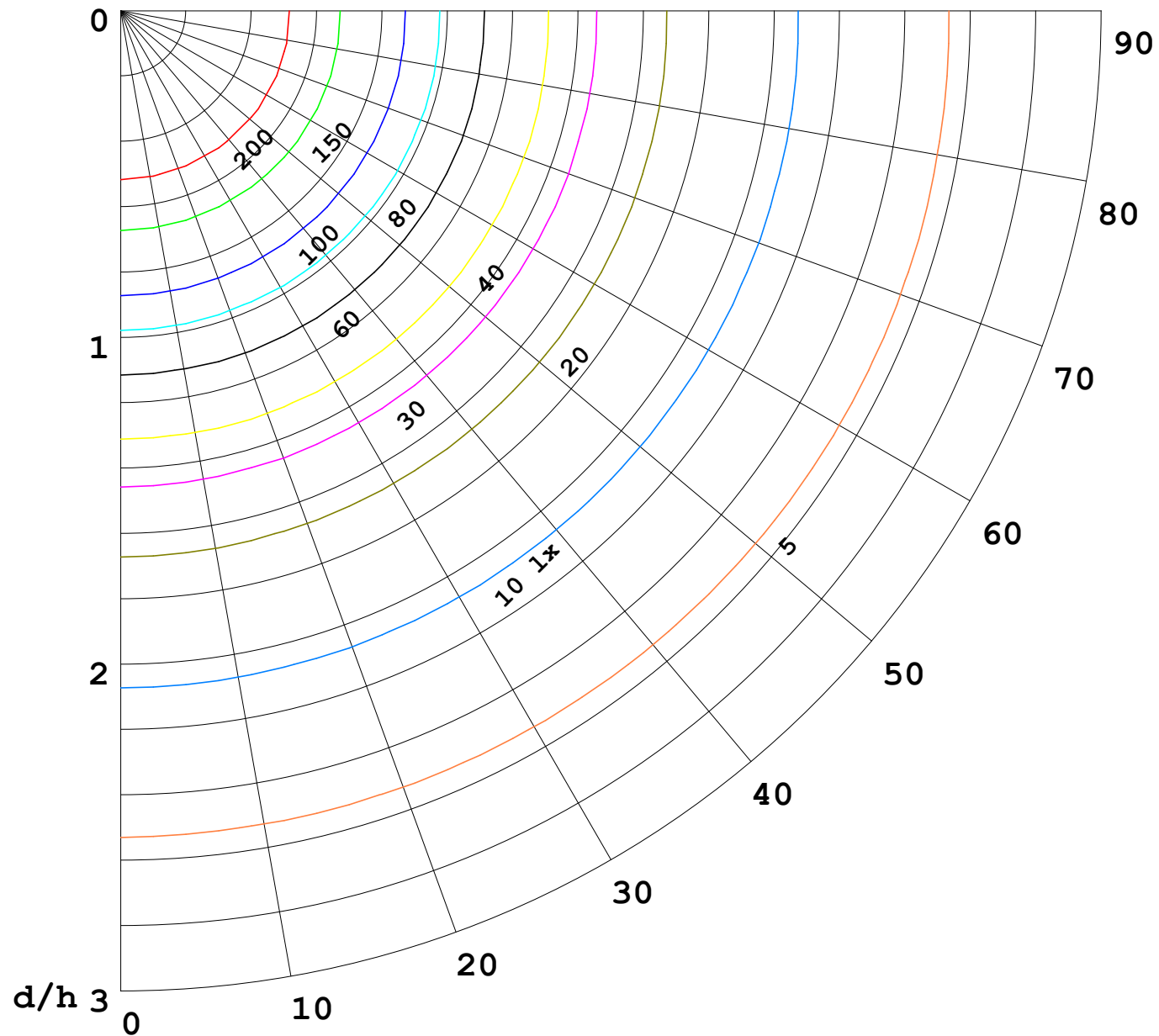
γ Range: 0 - 180DEG
γ Interval: 1.0DEG
Test System:EVERFINE GO-2000B_V1 SYSTEM V2.00.488
Humidity:65.0%
Test Distance:6.360m [K=1.0000]
Remarks:

I (cd)



1000 lm

$\kappa = 1$



F = 1000 lm
 K = 0.7
 Hcc = 0.8 m
 Hfc = 0.0 m
 Eave = 100 lx

	Pcc	Pw	Pfc
—————	70	50	30
—————	50	30	20

