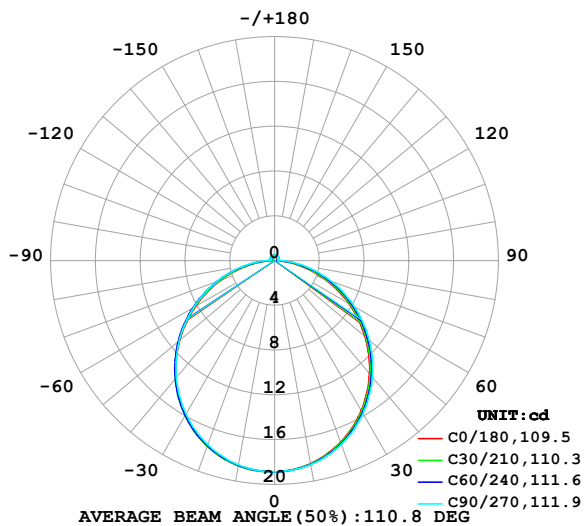


LUMINAIRE PHOTOMETRIC TEST REPORT

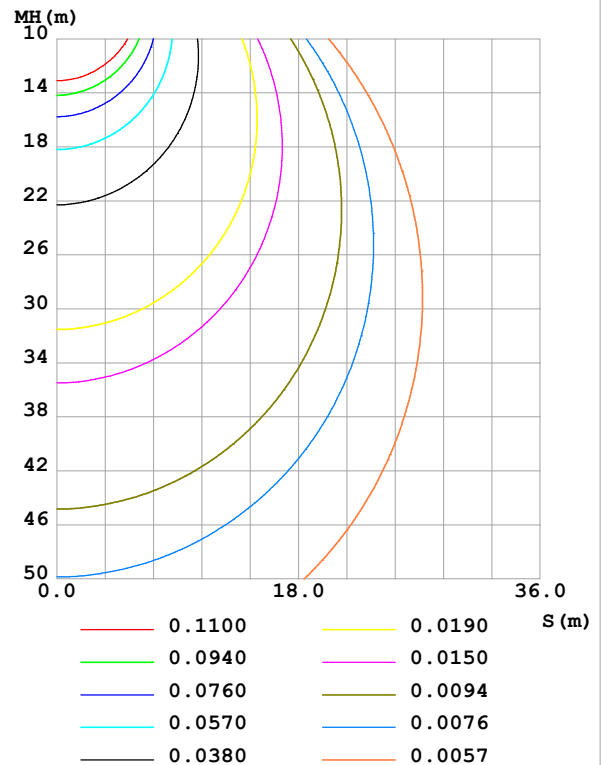
Test:U:24.00V I:0.2369A P:5.686W PF:1.000 Freq:0Hz Lamp Flux:55.9462x1 lm		
NAME: SF15-24V-5050-70-SPI-RGBW(4000K)-R	TYPE:	WEIGHT:
SPEC.:	DIM.: Length=1m	SERIAL No.:
MFR.: OLympia lighting	SUR.:	Shielding Angle:

DATA OF LAMP		PHOTOMETRIC DATA				Eff: 9.84 lm/W
MODEL	5050	Imax (cd)	18.87	S/MH(C0/180)	1.26	
NOMINAL POWER(W)		LOR(%)	100.0	S/MH(C90/270)	1.25	
RATED VOLTAGE(V)	24	TOTAL FLUX(lm)	55.946	η UP,DN(C0-180)	2.0,47.5	
NOMINAL FLUX(lm)	55.9462	CIE CLASS	DIRECT	η UP,DN(C180-360)	2.2,48.3	
LAMPS INSIDE	1	η up (%)	4.2	CIBSE SHR NOM	1.25	
TEST VOLTAGE(V)		η down (%)	95.8	CIBSE SHR MAX	1.35	

LUMINOUS INTENSITY DISTRIBUTION DIAGRAM



C0 PLANE ISOLUX DIAGRAM (UNIT:lx)



C Range: 0 - 360DEG
C Interval: 30.0DEG
Test Speed: HIGH
Temperature:25.3℃
Operators:
Test Date:2025-03-06

γ Range: 0 - 180DEG
 γ Interval: 1.0DEG
Test System:EVERFINE GO-2000B_V1 SYSTEM V2.00.488
Humidity:65.0%
Test Distance:6.360m [K=1.0000]
Remarks:

ZONAL FLUX DIAGRAM

ZONAL FLUX DIAGRAM:

γ	C0	C45	C90	C135	C180	C225	C270	C315	γ	Φ zone	Φ total	%lum, lamp
10	18.42	18.47	18.50	18.59	18.61	18.60	18.53	18.47	0- 10	1.785	1.785	3.19,3.19
20	17.26	17.36	17.46	17.60	17.62	17.61	17.50	17.37	10- 20	5.103	6.888	12.3,12.3
30	15.47	15.62	15.79	15.95	15.96	15.98	15.84	15.65	20- 30	7.698	14.59	26.1,26.1
40	13.18	13.37	13.59	13.75	13.72	13.80	13.67	13.42	30- 40	9.218	23.80	42.5,42.5
50	10.53	10.75	11.02	11.13	11.06	11.21	11.13	10.82	40- 50	9.490	33.29	59.5,59.5
60	7.646	7.908	8.228	8.241	8.135	8.326	8.348	7.992	50- 60	8.541	41.84	74.8,74.8
70	4.692	4.999	5.357	5.258	5.121	5.353	5.495	5.093	60- 70	6.571	48.41	86.5,86.5
80	1.888	2.218	2.591	2.401	2.245	2.509	2.743	2.312	70- 80	3.953	52.36	93.6,93.6
90	0.2162	0.2643	0.3205	0.2730	0.2104	0.3349	0.4343	0.3321	80- 90	1.264	53.62	95.8,95.8
100	0.2277	0.2699	0.3408	0.2902	0.2364	0.3478	0.4303	0.3422	90-100	0.3293	53.95	96.4,96.4
110	0.2737	0.3002	0.3639	0.3248	0.2681	0.3766	0.4534	0.3797	100-110	0.3469	54.30	97.1,97.1
120	0.3112	0.3420	0.3870	0.3580	0.3026	0.3954	0.4563	0.3883	110-120	0.3524	54.65	97.7,97.7
130	0.3487	0.3796	0.4130	0.3826	0.3373	0.4070	0.4592	0.4028	120-130	0.3416	54.99	98.3,98.3
140	0.3775	0.4041	0.4332	0.4100	0.3661	0.4228	0.4592	0.4086	130-140	0.3105	55.30	98.9,98.9
150	0.4035	0.4258	0.4534	0.4331	0.4036	0.4358	0.4592	0.4230	140-150	0.2641	55.57	99.3,99.3
160	0.4352	0.4488	0.4765	0.4576	0.4381	0.4546	0.4678	0.4461	150-160	0.2039	55.77	99.7,99.7
170	0.4553	0.4676	0.4794	0.4721	0.4612	0.4647	0.4649	0.4649	160-170	0.1301	55.90	99.9,99.9
180	0.4640	0.4733	0.4794	0.4764	0.4640	0.4748	0.4794	0.4764	170-180	0.0448	55.95	100,100
DEG	LUMINOUS INTENSITY:cd									UNIT:lm		

Conical surface Flux(90deg): 28.594 lm

%lum = 51.1%

%lamp = 51.1%

Conical surface Flux(130deg): 45.418 lm

%lum = 81.2%

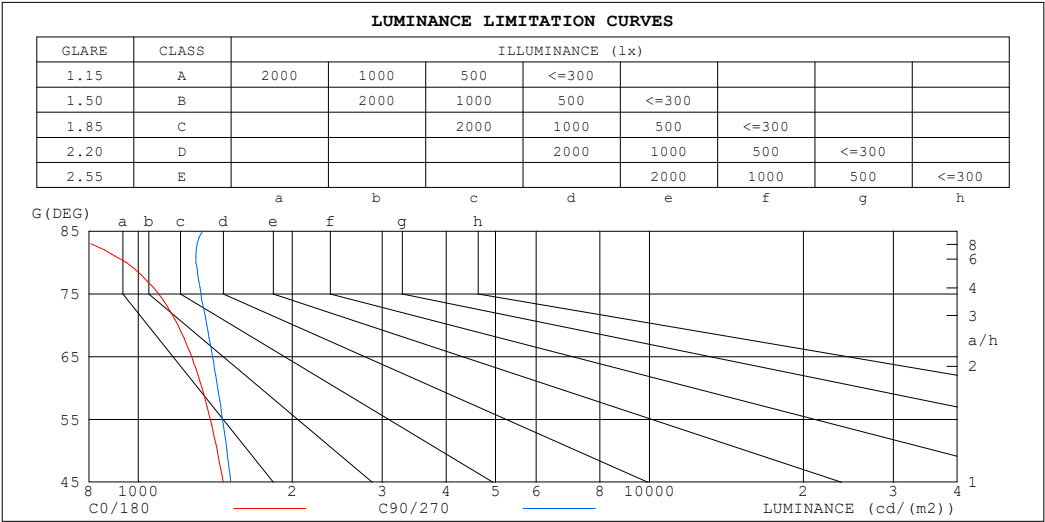
%lamp = 81.2%

C Range: 0 - 360DEG
 C Interval: 30.0DEG
 Test Speed: HIGH
 Temperature:25.3℃
 Operators:
 Test Date:2025-03-06

γ Range: 0 - 180DEG
 γ Interval: 1.0DEG
 Test System:EVERFINE GO-2000B_V1 SYSTEM V2.00.488
 Humidity:65.0%
 Test Distance:6.360m [K=1.0000]
 Remarks:

LUMINANCE LIMITATION CURVES

Test:U:24.00V I:0.2369A P:5.686W PF:1.000 Freq:0Hz Lamp Flux:55.9462x1 lm		
NAME: SF15-24V-5050-70-SPI-RGBW(4000K)-R	TYPE:	WEIGHT:
SPEC.:	DIM.: Length=1m	SERIAL No.:
MFR.: OLympia lighting	SUR.:	Shielding Angle:



LUMINANCE cd/(m2)		
G (DEG)	C0/180	C90/270
85	731	1337
80	947	1297
75	1095	1326
70	1195	1361
65	1271	1396
60	1332	1430
55	1382	1461
50	1427	1490
45	1464	1517

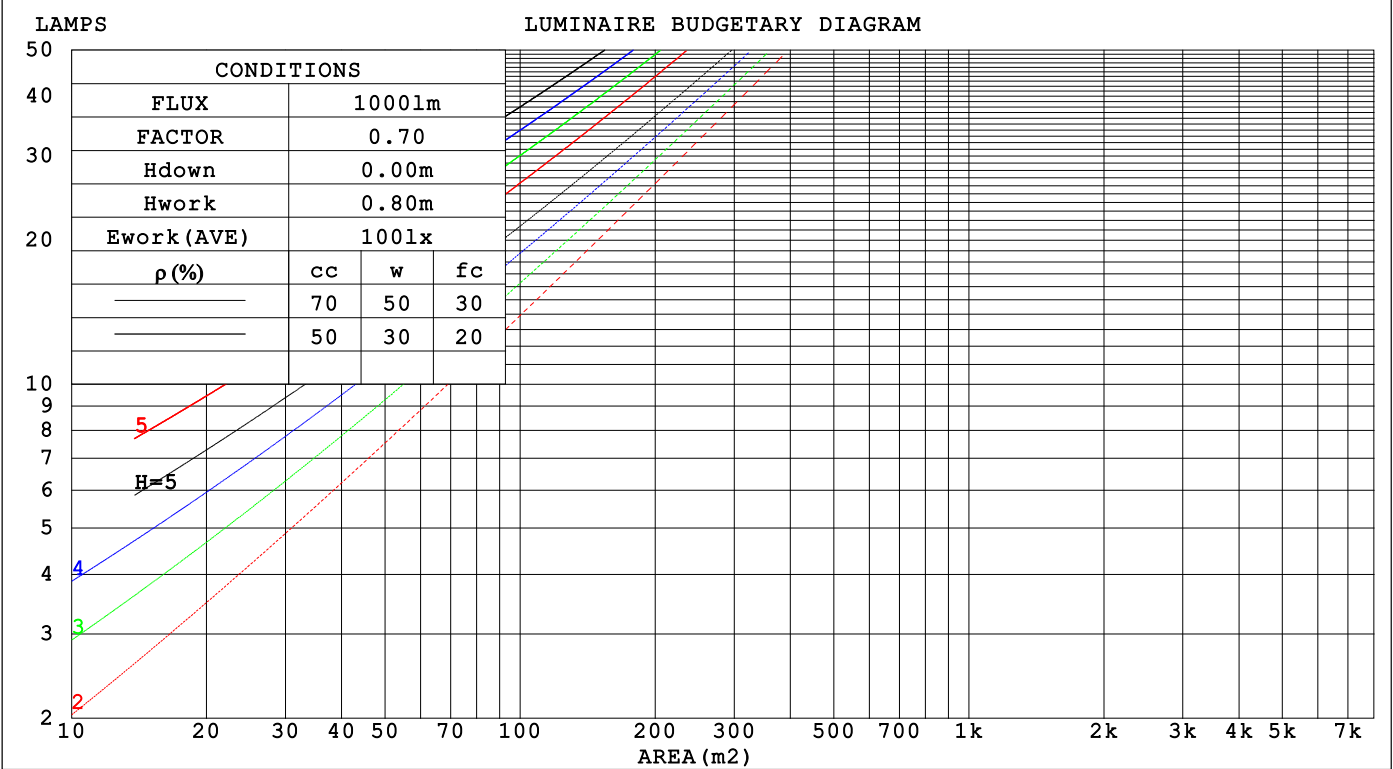
C Range: 0 - 360DEG
C Interval: 30.0DEG
Test Speed: HIGH
Temperature:25.3℃
Operators:
Test Date:2025-03-06

γ Range: 0 - 180DEG
γ Interval: 1.0DEG
Test System:EVERFINE GO-2000B_V1 SYSTEM V2.00.488
Humidity:65.0%
Test Distance:6.360m [K=1.0000]
Remarks:

CU AND LUMINAIRE BUDGETARY ESTIMATE DIAGRAM

Test:U:24.00V I:0.2369A P:5.686W PF:1.000 Freq:0Hz		
Lamp Flux:55.9462x1 lm		
NAME: SF15-24V-5050-70-SPI-RGBW(4000K)-R	TYPE:	WEIGHT:
SPEC.:	DIM.: Length=1m	SERIAL No.:
MFR.: OLYMPIA lighting	SUR.:	Shielding Angle:

pcc	80%			70%			50%			30%			10%			0
ρw	50%	30%	10%	50%	30%	10%	50%	30%	10%	50%	30%	10%	50%	30%	10%	0
ρfc	20%			20%			20%			20%			20%			0
RCR	RCR:Room Cavity Ratio			Coefficients of Utilization(CU)												
0.0	1.18	1.18	1.18	1.15	1.15	1.15	1.09	1.09	1.09	1.03	1.03	1.03	.98	.98	.98	.96
1.0	1.03	.98	.94	.90	.96	.92	.95	.92	.89	.90	.88	.85	.86	.84	.82	.80
2.0	.89	.82	.77	.87	.81	.75	.83	.78	.73	.79	.75	.71	.75	.72	.69	.66
3.0	.78	.70	.64	.76	.69	.63	.73	.66	.61	.70	.64	.60	.66	.62	.58	.56
4.0	.69	.61	.54	.68	.60	.53	.65	.58	.52	.62	.56	.51	.59	.54	.50	.47
5.0	.62	.53	.46	.61	.52	.46	.58	.51	.45	.56	.49	.44	.53	.48	.43	.41
6.0	.56	.47	.40	.55	.46	.40	.52	.45	.39	.50	.44	.39	.48	.43	.38	.36
7.0	.51	.42	.36	.49	.41	.35	.48	.40	.35	.46	.39	.34	.44	.38	.34	.32
8.0	.46	.38	.32	.45	.37	.31	.44	.36	.31	.42	.35	.31	.40	.35	.30	.28
9.0	.42	.34	.29	.42	.34	.28	.40	.33	.28	.39	.32	.28	.37	.32	.27	.25
10.0	.39	.31	.26	.38	.31	.26	.37	.30	.25	.36	.30	.25	.35	.29	.25	.23



C Range: 0 - 360DEG

C Interval: 30.0DEG

Test Speed: HIGH

Temperature:25.3℃

Operators:

Test Date:2025-03-06

γ Range: 0 - 180DEG

γ Interval: 1.0DEG

Test System:EVERFINE GO-2000B_V1 SYSTEM V2.00.488

Humidity:65.0%

Test Distance:6.360m [K=1.0000]

Remarks:

WEC AND CCEC

Test:U:24.00V I:0.2369A P:5.686W PF:1.000 Freq:0Hz Lamp Flux:55.9462x1 lm		
NAME: SF15-24V-5050-70-SPI-RGBW(4000K)-R	TYPE:	WEIGHT:
SPEC.:	DIM.: Length=1m	SERIAL No.:
MFR.: OLympia lighting	SUR.:	Shielding Angle:

pcc	80%			70%			50%			30%			10%			0														
pw	50%	30%	10%	50%	30%	10%	50%	30%	10%	50%	30%	10%	50%	30%	10%	0														
pfc	20%			20%			20%			20%			20%			0														
RCR	RCR:Room Cavity Ratio															Wall Exitance Coefficients(WEC)														
0.0																														
1.0	.314	.178	.056	.305	.174	.055	.290	.166	.053	.275	.159	.051	.262	.152	.049															
2.0	.293	.160	.049	.285	.157	.048	.271	.151	.047	.259	.145	.045	.247	.140	.044															
3.0	.270	.144	.043	.263	.141	.042	.251	.136	.041	.239	.131	.040	.229	.127	.039															
4.0	.249	.129	.038	.243	.127	.038	.232	.123	.037	.221	.119	.036	.212	.115	.035															
5.0	.230	.117	.034	.224	.115	.034	.214	.112	.033	.205	.108	.032	.197	.105	.032															
6.0	.213	.107	.031	.208	.105	.030	.199	.102	.030	.191	.099	.029	.183	.096	.029															
7.0	.198	.098	.028	.194	.096	.027	.186	.094	.027	.178	.091	.027	.171	.089	.026															
8.0	.185	.090	.025	.181	.089	.025	.174	.087	.025	.167	.085	.024	.160	.082	.024															
9.0	.173	.084	.023	.170	.083	.023	.163	.081	.023	.157	.079	.023	.151	.077	.022															
10.0	.163	.078	.022	.160	.077	.021	.154	.075	.021	.148	.073	.021	.143	.072	.021															

pcc	80%			70%			50%			30%			10%			0
pw	50%	30%	10%	50%	30%	10%	50%	30%	10%	50%	30%	10%	50%	30%	10%	0
pfc	20%			20%			20%			20%			20%			0
RCR	RCR:Room Cavity Ratio						Ceiling Cavity Exitance Coefficients (CCEC)									
0.0	.222	.222	.222	.190	.190	.190	.130	.130	.130	.074	.074	.074	.024	.024	.024	
1.0	.212	.188	.166	.182	.161	.143	.124	.111	.099	.072	.064	.057	.023	.021	.019	
2.0	.204	.164	.130	.175	.141	.112	.120	.098	.078	.069	.057	.046	.022	.018	.015	
3.0	.197	.147	.107	.169	.126	.092	.116	.088	.065	.067	.051	.038	.021	.017	.013	
4.0	.189	.133	.091	.162	.115	.079	.112	.080	.056	.065	.047	.033	.021	.015	.011	
5.0	.182	.123	.080	.156	.107	.069	.108	.074	.049	.062	.044	.029	.020	.014	.010	
6.0	.175	.115	.072	.150	.099	.063	.104	.070	.044	.060	.041	.026	.019	.013	.009	
7.0	.168	.108	.066	.144	.094	.058	.100	.066	.041	.058	.039	.024	.019	.013	.008	
8.0	.161	.102	.062	.139	.089	.054	.096	.062	.038	.056	.037	.023	.018	.012	.008	
9.0	.155	.097	.058	.134	.084	.051	.093	.059	.036	.054	.035	.021	.017	.012	.007	
10.0	.150	.093	.055	.129	.081	.048	.089	.057	.034	.052	.034	.021	.017	.011	.007	

C Range: 0 - 360DEG
C Interval: 30.0DEG
Test Speed: HIGH
Temperature:25.3℃
Operators:
Test Date:2025-03-06

γ Range: 0 - 180DEG
γ Interval: 1.0DEG
Test System:EVERFINE GO-2000B_V1 SYSTEM V2.00.488
Humidity:65.0%
Test Distance:6.360m [K=1.0000]
Remarks:

UGR(Unified Glare Rating) Table

Test:U:24.00V I:0.2369A P:5.686W PF:1.000 Freq:0Hz Lamp Flux:55.9462x1 lm											
NAME: SF15-24V-5050-70-SPI-RGBW(4000K)-R						TYPE:		WEIGHT:			
SPEC.:						DIM.: Length=1m		SERIAL No.:			
MFR.: OLympia lighting						SUR.:		Shielding Angle:			
ceiling/cavity	0.7	0.7	0.5	0.5	0.3	0.7	0.7	0.5	0.5	0.3	
walls	0.5	0.3	0.5	0.3	0.3	0.5	0.3	0.5	0.3	0.3	
working plane	0.2	0.2	0.2	0.2	0.2	0.2	0.2	0.2	0.2	0.2	
Room dimensions		Viewed crosswise					Viewed endwise				
x = 2H y = 2H	23.5	25.0	23.8	25.2	25.5	23.7	25.2	24.1	25.5	25.8	
	3H	24.9	26.3	25.3	26.6	26.9	25.4	26.7	25.7	27.0	27.3
	4H	25.5	26.8	25.9	27.1	27.5	26.0	27.3	26.4	27.7	28.0
	6H	25.9	27.1	26.3	27.4	27.8	26.6	27.8	27.0	28.2	28.5
	8H	26.0	27.2	26.4	27.5	27.9	26.8	28.0	27.2	28.3	28.7
	12H	26.0	27.2	26.5	27.5	27.9	27.0	28.1	27.4	28.5	28.9
4H	2H	24.1	25.4	24.5	25.7	26.1	24.3	25.6	24.7	25.9	26.3
	3H	25.7	26.9	26.2	27.2	27.6	26.1	27.2	26.5	27.6	28.0
	4H	26.4	27.5	26.9	27.9	28.3	26.9	28.0	27.4	28.3	28.8
	6H	26.9	27.9	27.4	28.3	28.7	27.6	28.5	28.1	29.0	29.4
	8H	27.1	27.9	27.6	28.4	28.9	27.9	28.7	28.4	29.2	29.7
	12H	27.2	28.0	27.7	28.4	28.9	28.1	28.9	28.6	29.4	29.8
8H	4H	26.7	27.6	27.2	28.0	28.5	27.2	28.0	27.6	28.5	28.9
	6H	27.4	28.1	27.9	28.6	29.1	28.0	28.7	28.5	29.2	29.7
	8H	27.6	28.2	28.1	28.7	29.3	28.4	29.0	28.9	29.5	30.1
	12H	27.8	28.3	28.3	28.8	29.4	28.7	29.3	29.3	29.8	30.3
12H	4H	26.8	27.5	27.3	28.0	28.5	27.2	27.9	27.7	28.4	28.9
	6H	27.5	28.1	28.0	28.6	29.1	28.1	28.7	28.6	29.2	29.7
	8H	27.7	28.3	28.3	28.8	29.4	28.5	29.0	29.0	29.5	30.1
Variations with the observer position at spacings(CIE Pub.117):											
S = 1.0H	+ 0.2 / - 0.2					+ 0.1 / - 0.2					
1.5H	+ 0.2 / - 0.3					+ 0.2 / - 0.3					
2.0H	+ 0.2 / - 0.3					+ 0.1 / - 0.2					

CIE Pub.117, 55.95 lm Total Lamp Luminous Flux Correct (8log(F/F0) = -10.0)
Area: 0.0115 m2

C Range: 0 - 360DEG
C Interval: 30.0DEG
Test Speed: HIGH
Temperature:25.3℃
Operators:
Test Date:2025-03-06

γ Range: 0 - 180DEG
γ Interval: 1.0DEG
Test System:EVERFINE GO-2000B_V1 SYSTEM V2.00.488
Humidity:65.0%
Test Distance:6.360m [K=1.0000]
Remarks:

UTILIZATION FACTORS TABLE

Test:U:24.00V I:0.2369A P:5.686W PF:1.000 Freq:0Hz Lamp Flux:55.9462x1 lm		
NAME: SF15-24V-5050-70-SPI-RGBW(4000K)-R	TYPE:	WEIGHT:
SPEC.:	DIM.: Length=1m	SERIAL No.:
MFR.: OLympia lighting	SUR.:	Shielding Angle:

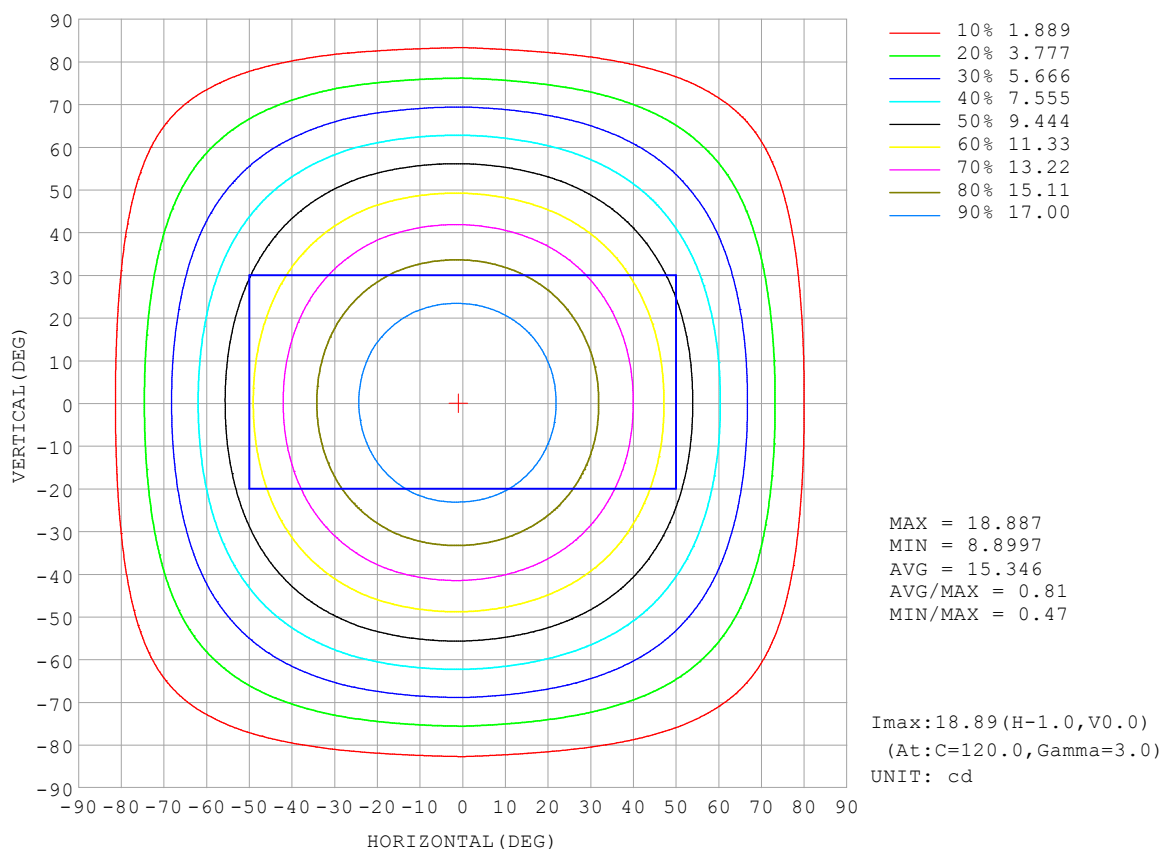
REFLECTANCE										
Ceiling	0.8	0.8	0.8	0.7	0.7	0.7	0.5	0.5	0.5	0
Walls	0.7	0.5	0.3	0.7	0.5	0.3	0.7	0.5	0.3	0
Working plane	0.2	0.2	0.2	0.2	0.2	0.2	0.2	0.2	0.2	0
ROOM INDEX	UTILIZATION FACTORS (PERCENT) $k(RI) \times RCR = 5$									
$k = 0.60$	56	45	38	55	44	38	54	44	37	31
0.80	66	54	47	65	54	47	63	53	46	39
1.00	74	63	56	73	62	55	70	64	55	47
1.25	81	71	64	80	70	63	77	68	62	54
1.50	86	76	69	85	75	69	81	73	67	59
2.00	93	85	78	91	83	77	87	80	75	66
2.50	97	89	83	95	88	82	91	85	80	70
3.00	101	94	88	98	92	87	94	88	84	74
4.00	105	99	94	102	97	92	97	93	89	79
5.00	107	102	98	104	100	96	99	96	92	82
ROOM INDEX	UF (total)									Direct
According to DIN EN 13032-2 2004			Suspended					SHRNOM = 1.25		

C Range: 0 - 360DEG
 C Interval: 30.0DEG
 Test Speed: HIGH
 Temperature: 25.3 °C
 Operators:
 Test Date: 2025-03-06

γ Range: 0 - 180DEG
 γ Interval: 1.0DEG
 Test System: EVERFINE GO-2000B_V1 SYSTEM V2.00.488
 Humidity: 65.0%
 Test Distance: 6.360m [K=1.0000]
 Remarks:

ISOCANDELA DIAGRAM

Test:U:24.00V I:0.2369A P:5.686W PF:1.000 Freq:0Hz Lamp Flux:55.9462x1 lm		
NAME: SF15-24V-5050-70-SPI-RGBW(4000K)-R	TYPE:	WEIGHT:
SPEC.:	DIM.: Length=1m	SERIAL No.:
MFR.: OLympia lighting	SUR.:	Shielding Angle:

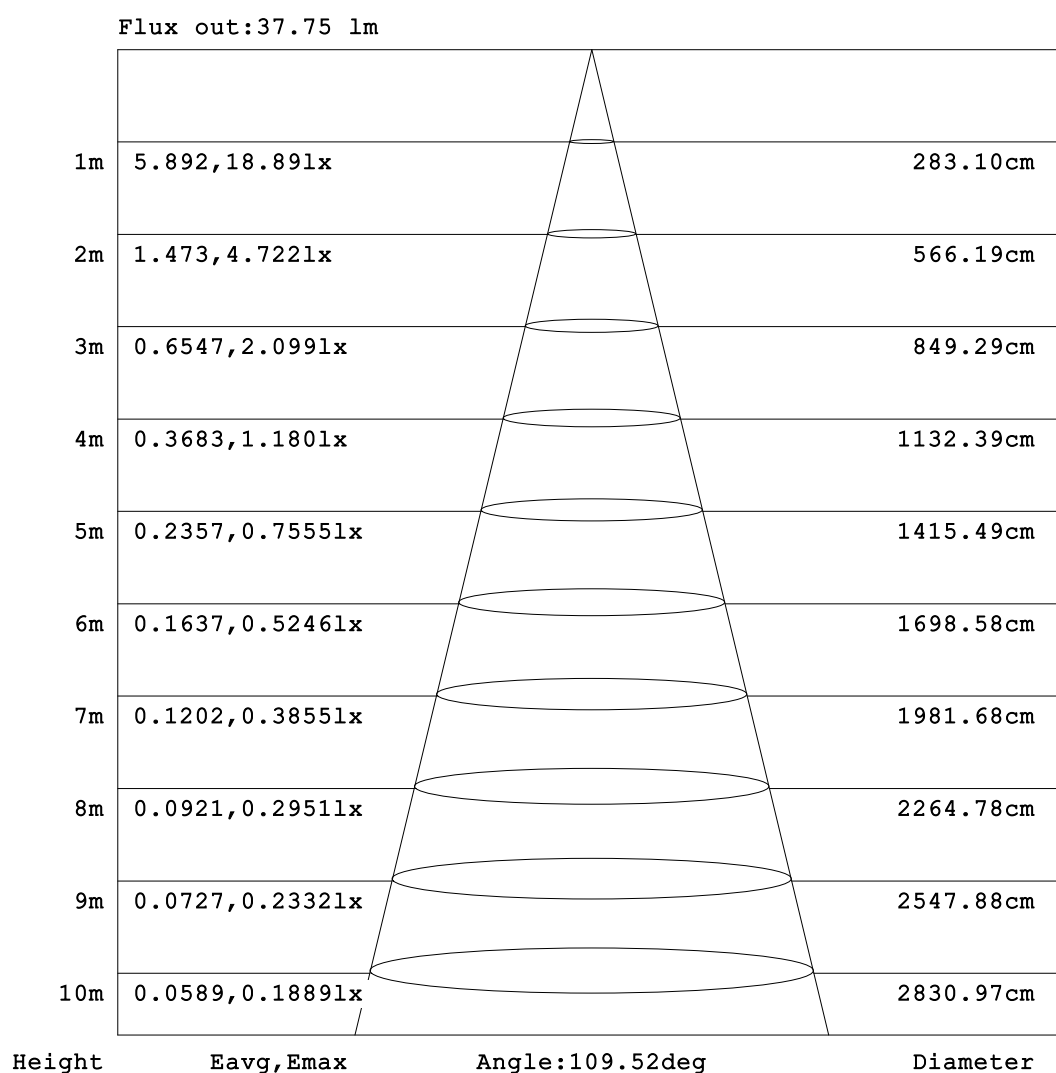


C Range: 0 - 360DEG
C Interval: 30.0DEG
Test Speed: HIGH
Temperature:25.3℃
Operators:
Test Date:2025-03-06

γ Range: 0 - 180DEG
γ Interval: 1.0DEG
Test System:EVERFINE GO-2000B_V1 SYSTEM V2.00.488
Humidity:65.0%
Test Distance:6.360m [K=1.0000]
Remarks:

AAI Figure

Test:U:24.00V I:0.2369A P:5.686W PF:1.000 Freq:0Hz Lamp Flux:55.9462x1 lm		
NAME: SF15-24V-5050-70-SPI-RGBW(4000K)-R	TYPE:	WEIGHT:
SPEC.:	DIM.: Length=1m	SERIAL No.:
MFR.: OLympia lighting	SUR.:	Shielding Angle:



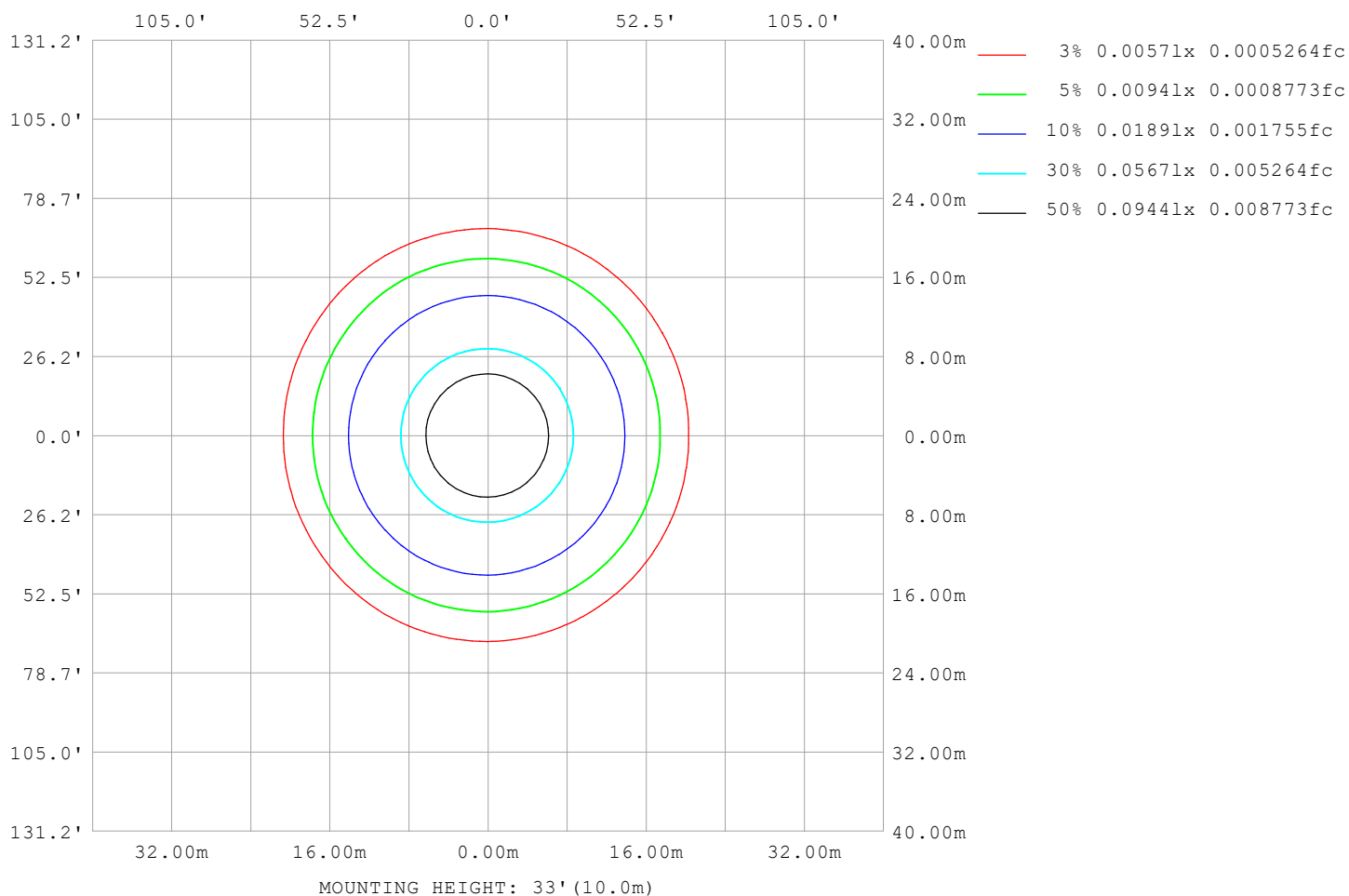
Note:The Curves indicate the illuminated area and the average illumination when the luminaire is at different distance.

C Range: 0 - 360DEG
C Interval: 30.0DEG
Test Speed: HIGH
Temperature:25.3℃
Operators:
Test Date:2025-03-06

γ Range: 0 - 180DEG
γ Interval: 1.0DEG
Test System:EVERFINE GO-2000B_V1 SYSTEM V2.00.488
Humidity:65.0%
Test Distance:6.360m [K=1.0000]
Remarks:

ISOLUX DIAGRAM

Test:U:24.00V I:0.2369A P:5.686W PF:1.000 Freq:0Hz Lamp Flux:55.9462x1 lm		
NAME: SF15-24V-5050-70-SPI-RGBW(4000K)-R	TYPE:	WEIGHT:
SPEC.:	DIM.: Length=1m	SERIAL No.:
MFR.: OLympia lighting	SUR.:	Shielding Angle:



C Range: 0 - 360DEG
C Interval: 30.0DEG
Test Speed: HIGH
Temperature: 25.3°C
Operators:
Test Date: 2025-03-06

γ Range: 0 - 180DEG
γ Interval: 1.0DEG
Test System: EVERFINE GO-2000B_V1 SYSTEM V2.00.488
Humidity: 65.0%
Test Distance: 6.360m [K=1.0000]
Remarks:

LED Avg.L Report

Test:U:24.00V I:0.2369A P:5.686W PF:1.000 Freq:0Hz Lamp Flux:55.9462x1 lm		
NAME: SF15-24V-5050-70-SPI-RGBW(4000K)-R	TYPE:	WEIGHT:
SPEC.:	DIM.: Length=1m	SERIAL No.:
MFR.: OLympia lighting	SUR.:	Shielding Angle:

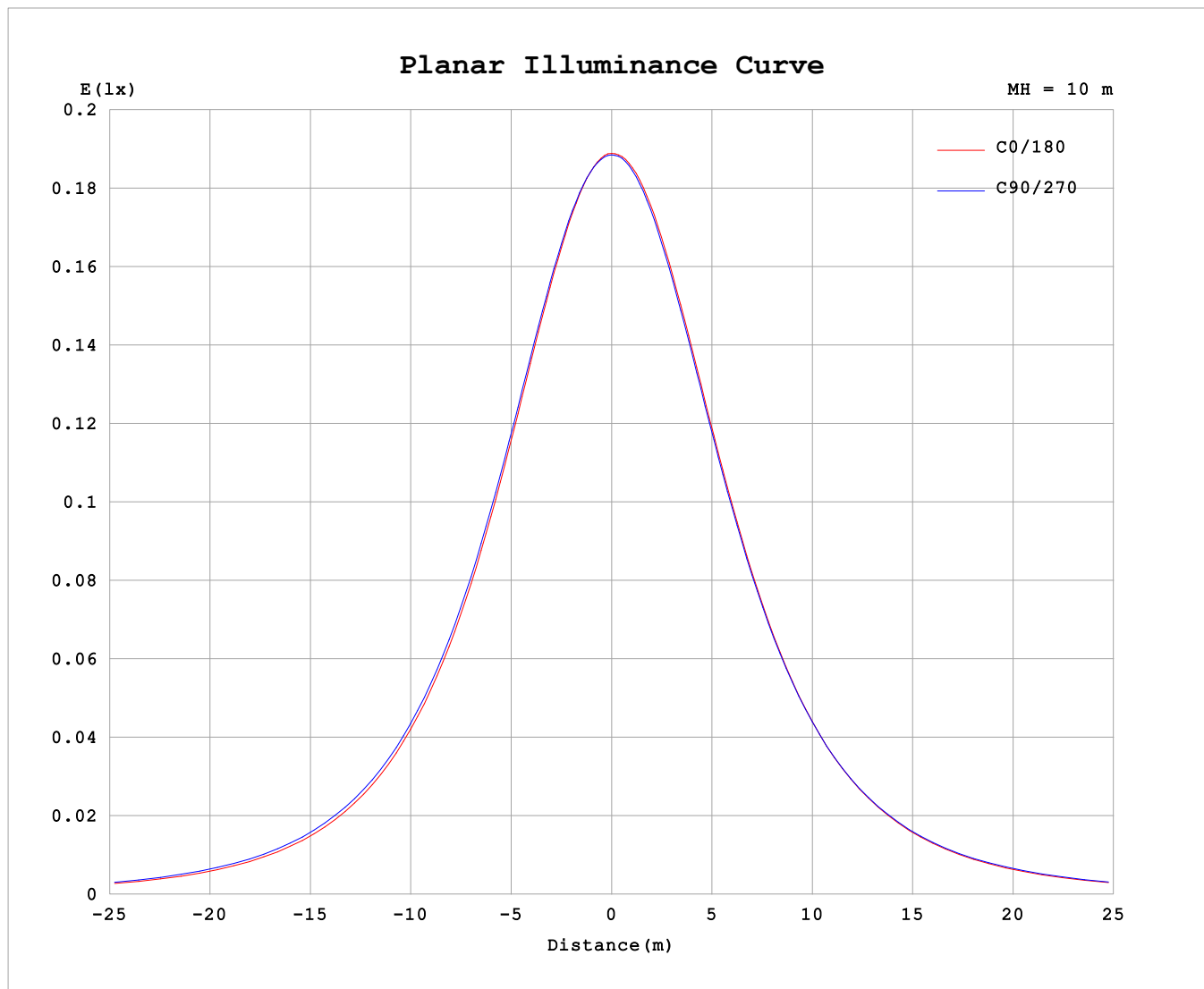
AvgL	cd/m2
L_0~180 (65) av	1317
L_0~180 (75) av	1160
L_0~180 (85) av	842
L_90~270 (65) av	1410
L_90~270 (75) av	1350
L_90~270 (85) av	1399
L_45 (65) av	1368
L_45 (75) av	1257
L_45 (85) av	1073

Standard: GB/T 29293-2012

C Range: 0 - 360DEG
C Interval: 30.0DEG
Test Speed: HIGH
Temperature:25.3℃
Operators:
Test Date:2025-03-06

γ Range: 0 - 180DEG
γ Interval: 1.0DEG
Test System:EVERFINE GO-2000B_V1 SYSTEM V2.00.488
Humidity:65.0%
Test Distance:6.360m [K=1.0000]
Remarks:

Planar Illuminance Curve



C Range: 0 - 360DEG
C Interval: 30.0DEG
Test Speed: HIGH
Temperature: 25.3 °C
Operators:
Test Date: 2025-03-06

γ Range: 0 - 180DEG
 γ Interval: 1.0DEG
Test System: EVERFINE GO-2000B_V1 SYSTEM V2.00.488
Humidity: 65.0%
Test Distance: 6.360m [K=1.0000]
Remarks:

LUMINOUS DISTRIBUTION INTENSITY DATA

Test:U:24.00V I:0.2369A P:5.686W PF:1.000 Freq:0Hz Lamp Flux:55.9462x1 lm											
NAME: SF15-24V-5050-70-SPI-RGBW(4000K)-R						TYPE:			WEIGHT:		
SPEC.:						DIM.: Length=1m			SERIAL No.:		
MFR.: OLYMPIA lighting						SUR.:			Shielding Angle:		

Table--1

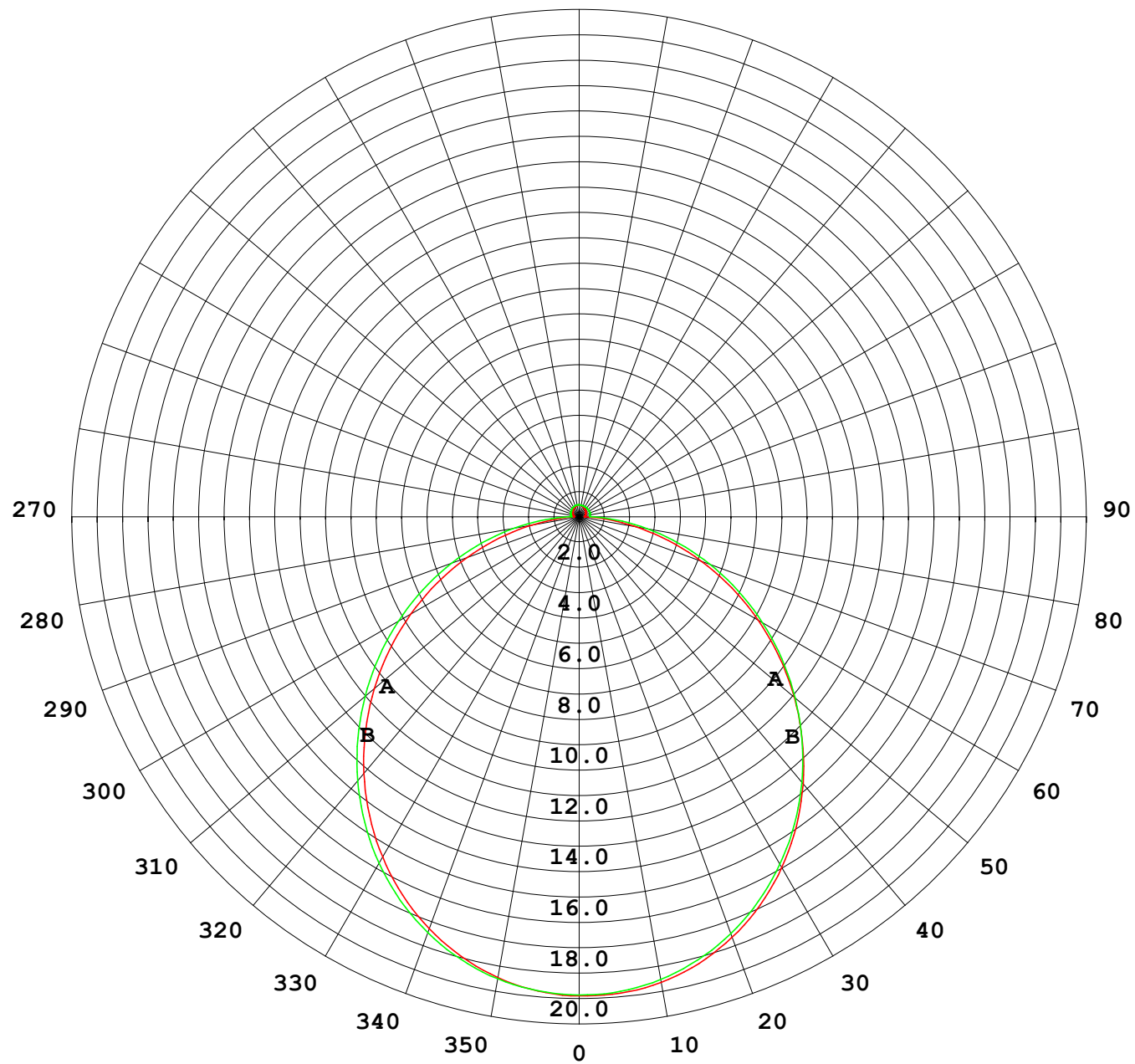
UNIT: cd

C (DEG) γ (DEG)	0	30	60	90	120	150	180	210	240	270	300	330							
0	18.9	18.9	18.9	18.9	18.9	18.9	18.9	18.9	18.9	18.9	18.9	18.9							
5	18.7	18.7	18.8	18.8	18.8	18.8	18.8	18.8	18.8	18.8	18.8	18.8							
10	18.4	18.4	18.5	18.5	18.6	18.6	18.6	18.6	18.6	18.5	18.5	18.5							
15	17.9	18.0	18.0	18.1	18.2	18.2	18.2	18.2	18.2	18.1	18.0	18.0							
20	17.3	17.3	17.4	17.5	17.6	17.6	17.6	17.6	17.6	17.5	17.4	17.3							
25	16.4	16.5	16.6	16.7	16.8	16.9	16.9	16.9	16.9	16.7	16.6	16.5							
30	15.5	15.6	15.7	15.8	15.9	16.0	16.0	16.0	16.0	15.8	15.7	15.6							
35	14.4	14.5	14.6	14.7	14.9	14.9	14.9	15.0	15.0	14.8	14.7	14.5							
40	13.2	13.3	13.4	13.6	13.7	13.8	13.7	13.8	13.8	13.7	13.5	13.3							
45	11.9	12.0	12.2	12.3	12.5	12.5	12.4	12.5	12.6	12.4	12.3	12.0							
50	10.5	10.7	10.8	11.0	11.2	11.1	11.1	11.2	11.2	11.1	11.0	10.7							
55	9.10	9.24	9.46	9.64	9.76	9.67	9.62	9.72	9.86	9.77	9.58	9.28							
60	7.65	7.78	8.04	8.23	8.31	8.18	8.14	8.23	8.42	8.35	8.15	7.83							
65	6.17	6.31	6.59	6.79	6.83	6.67	6.63	6.73	6.95	6.92	6.72	6.37							
70	4.69	4.85	5.15	5.36	5.35	5.17	5.12	5.22	5.48	5.49	5.27	4.91							
75	3.25	3.43	3.73	3.95	3.89	3.71	3.65	3.77	4.04	4.09	3.86	3.50							
80	1.89	2.07	2.37	2.59	2.50	2.30	2.25	2.37	2.65	2.74	2.49	2.13							
85	0.73	0.84	1.09	1.34	1.20	1.02	0.96	1.07	1.33	1.46	1.21	0.89							
90	0.22	0.24	0.29	0.32	0.30	0.25	0.21	0.28	0.39	0.43	0.38	0.28							
95	0.22	0.25	0.28	0.32	0.29	0.26	0.22	0.27	0.41	0.42	0.39	0.27							
100	0.23	0.26	0.28	0.34	0.30	0.28	0.24	0.27	0.42	0.43	0.41	0.28							
105	0.25	0.27	0.29	0.35	0.31	0.30	0.25	0.29	0.44	0.44	0.42	0.29							
110	0.27	0.29	0.31	0.36	0.34	0.31	0.27	0.31	0.45	0.45	0.43	0.33							
115	0.29	0.32	0.33	0.38	0.35	0.33	0.28	0.33	0.45	0.45	0.43	0.33							
120	0.31	0.34	0.34	0.39	0.36	0.35	0.30	0.34	0.45	0.46	0.43	0.35							
125	0.33	0.36	0.37	0.40	0.38	0.36	0.32	0.35	0.45	0.46	0.43	0.36							
130	0.35	0.38	0.38	0.41	0.39	0.38	0.34	0.36	0.46	0.46	0.44	0.37							
135	0.37	0.40	0.39	0.42	0.40	0.40	0.35	0.37	0.46	0.46	0.44	0.37							
140	0.38	0.40	0.40	0.43	0.41	0.41	0.37	0.39	0.46	0.46	0.44	0.37							
145	0.39	0.42	0.41	0.44	0.42	0.42	0.38	0.40	0.46	0.46	0.45	0.39							
150	0.40	0.43	0.42	0.45	0.43	0.44	0.40	0.40	0.47	0.46	0.45	0.40							
155	0.42	0.44	0.43	0.46	0.45	0.45	0.42	0.42	0.47	0.46	0.47	0.41							
160	0.44	0.46	0.44	0.48	0.45	0.46	0.44	0.43	0.48	0.47	0.47	0.42							
165	0.45	0.47	0.46	0.48	0.46	0.47	0.45	0.44	0.48	0.46	0.48	0.43							
170	0.46	0.47	0.46	0.48	0.47	0.48	0.46	0.45	0.48	0.46	0.48	0.45							
175	0.46	0.47	0.47	0.48	0.48	0.48	0.47	0.46	0.48	0.47	0.48	0.46							
180	0.46	0.47	0.47	0.48	0.48	0.48	0.46	0.47	0.48	0.48	0.48	0.47							

C Range: 0 - 360DEG
C Interval: 30.0DEG
Test Speed: HIGH
Temperature:25.3℃
Operators:
Test Date:2025-03-06

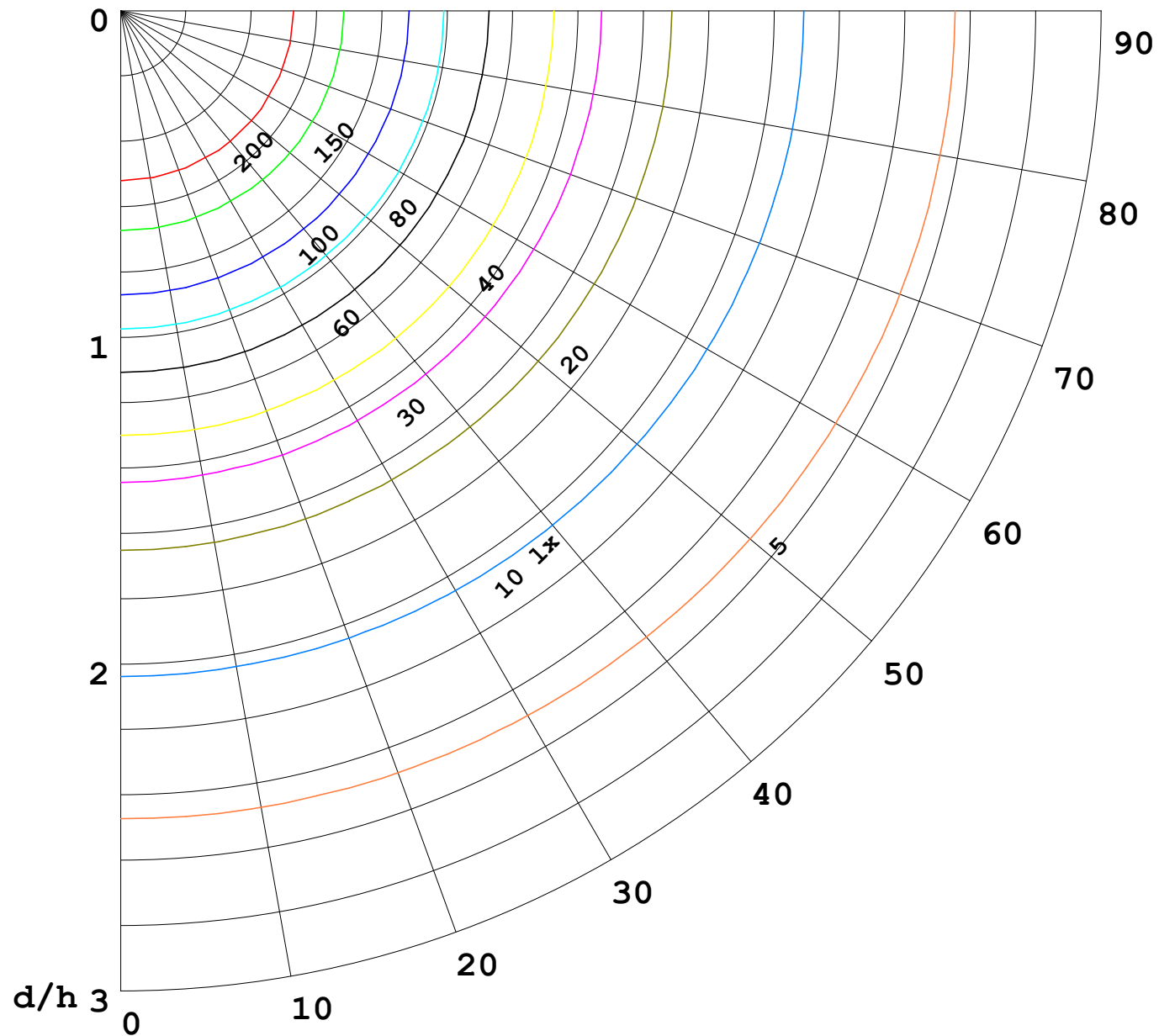
γ Range: 0 - 180DEG
γ Interval: 1.0DEG
Test System:EVERFINE GO-2000B_V1 SYSTEM V2.00.488
Humidity:65.0%
Test Distance:6.360m [K=1.0000]
Remarks:

I (cd)



1000 lm

$\kappa = 1$



F = 1000 lm
 K = 0.7
 Hcc = 0.8 m
 Hfc = 0.0 m
 Eave = 100 lx

	Pcc	Pw	Pfc
—————	70	50	30
—————	50	30	20

