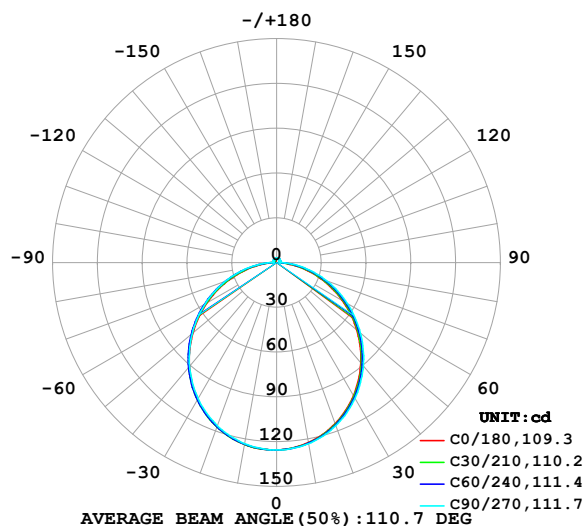


LUMINAIRE PHOTOMETRIC TEST REPORT

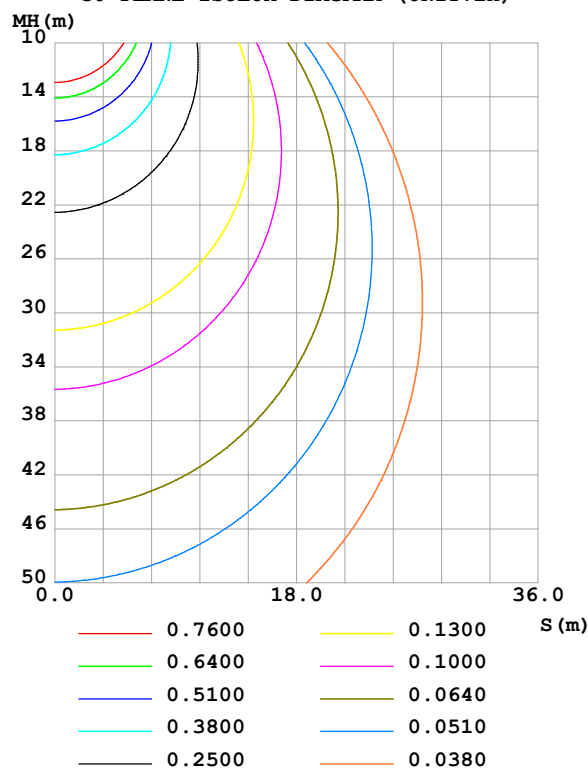
| | | |
|--|-----------------|------------------|
| Test:U:24.00V I:0.7283A P:17.48W PF:1.000 Freq:0Hz Lamp Flux:370.889x1 lm | | |
| NAME: SF15-24V-5050-70-SPI-RGBW(4000K)-ALL | TYPE: | WEIGHT: |
| SPEC.: | DIM.: Length=1m | SERIAL No.: |
| MFR.: OLympia lighting | SUR.: | Shielding Angle: |

| DATA OF LAMP | | PHOTOMETRIC DATA | | | | Eff: 21.22 lm/W |
|------------------|---------|------------------|--------|------------------------|----------|-----------------|
| MODEL | 5050 | Imax(cd) | 125.6 | S/MH(C0/180) | 1.25 | |
| NOMINAL POWER(W) | 18 | LOR(%) | 100.0 | S/MH(C90/270) | 1.25 | |
| RATED VOLTAGE(V) | 24 | TOTAL FLUX(lm) | 370.89 | η UP,DN(C0-180) | 1.9,47.7 | |
| NOMINAL FLUX(lm) | 370.889 | CIE CLASS | DIRECT | η UP,DN(C180-360) | 2.0,48.4 | |
| LAMPS INSIDE | 1 | η up(%) | 3.9 | CIBSE SHR NOM | 1.25 | |
| TEST VOLTAGE(V) | | η down(%) | 96.1 | CIBSE SHR MAX | 1.35 | |

LUMINOUS INTENSITY DISTRIBUTION DIAGRAM



C0 PLANE ISOLUX DIAGRAM (UNIT:lx)



C Range: 0 - 360DEG
C Interval: 30.0DEG
Test Speed: HIGH
Temperature: 25.3 °C
Operators:
Test Date: 2025-03-06

γ Range: 0 - 180DEG
 γ Interval: 1.0DEG
Test System: EVERFINE GO-2000B_V1 SYSTEM V2.00.488
Humidity: 65.0%
Test Distance: 6.360m [K=1.0000]
Remarks:

ZONAL FLUX DIAGRAM

ZONAL FLUX DIAGRAM:

| γ | C0 | C45 | C90 | C135 | C180 | C225 | C270 | C315 | γ | Φ zone | Φ total | %lum, lamp |
|----------|-----------------------|-------|-------|-------|-------|-------|-------|-------|----------|-------------|--------------|------------|
| 10 | 122.5 | 122.8 | 123.2 | 123.6 | 123.8 | 123.7 | 123.2 | 122.8 | 0- 10 | 11.87 | 11.87 | 3.2,3.2 |
| 20 | 114.8 | 115.4 | 116.2 | 117.0 | 116.9 | 117.1 | 116.3 | 115.6 | 10- 20 | 33.93 | 45.80 | 12.3,12.3 |
| 30 | 103.0 | 103.9 | 105.0 | 106.0 | 105.7 | 106.2 | 105.3 | 104.1 | 20- 30 | 51.17 | 96.97 | 26.1,26.1 |
| 40 | 87.75 | 88.92 | 90.40 | 91.42 | 90.90 | 91.70 | 90.77 | 89.26 | 30- 40 | 61.27 | 158.2 | 42.7,42.7 |
| 50 | 70.10 | 71.48 | 73.24 | 74.00 | 73.22 | 74.34 | 73.82 | 71.93 | 40- 50 | 63.07 | 221.3 | 59.7,59.7 |
| 60 | 50.90 | 52.59 | 54.65 | 54.82 | 53.84 | 55.21 | 55.32 | 53.12 | 50- 60 | 56.73 | 278.0 | 75,75 |
| 70 | 31.35 | 33.28 | 35.57 | 35.04 | 33.85 | 35.46 | 36.31 | 33.87 | 60- 70 | 43.64 | 321.7 | 86.7,86.7 |
| 80 | 12.70 | 14.80 | 17.26 | 16.13 | 14.86 | 16.56 | 17.97 | 15.39 | 70- 80 | 26.27 | 347.9 | 93.8,93.8 |
| 90 | 1.402 | 1.673 | 1.967 | 1.680 | 1.285 | 1.969 | 2.505 | 1.984 | 80- 90 | 8.377 | 356.3 | 96.1,96.1 |
| 100 | 1.526 | 1.775 | 2.118 | 1.839 | 1.439 | 2.077 | 2.613 | 2.094 | 90-100 | 2.019 | 358.3 | 96.6,96.6 |
| 110 | 1.760 | 1.951 | 2.274 | 2.075 | 1.658 | 2.276 | 2.776 | 2.287 | 100-110 | 2.155 | 360.5 | 97.2,97.2 |
| 120 | 1.991 | 2.159 | 2.413 | 2.277 | 1.874 | 2.419 | 2.801 | 2.398 | 110-120 | 2.201 | 362.7 | 97.8,97.8 |
| 130 | 2.244 | 2.407 | 2.567 | 2.453 | 2.088 | 2.528 | 2.830 | 2.523 | 120-130 | 2.135 | 364.8 | 98.4,98.4 |
| 140 | 2.469 | 2.594 | 2.723 | 2.621 | 2.302 | 2.637 | 2.859 | 2.581 | 130-140 | 1.959 | 366.8 | 98.9,98.9 |
| 150 | 2.643 | 2.745 | 2.877 | 2.781 | 2.524 | 2.761 | 2.917 | 2.704 | 140-150 | 1.676 | 368.5 | 99.3,99.3 |
| 160 | 2.822 | 2.893 | 3.001 | 2.928 | 2.749 | 2.891 | 2.981 | 2.849 | 150-160 | 1.303 | 369.8 | 99.7,99.7 |
| 170 | 2.942 | 3.021 | 3.082 | 3.049 | 2.922 | 3.004 | 3.045 | 3.003 | 160-170 | 0.8354 | 370.6 | 99.9,99.9 |
| 180 | 3.011 | 3.085 | 3.120 | 3.102 | 3.025 | 3.083 | 3.111 | 3.101 | 170-180 | 0.2904 | 370.9 | 100,100 |
| DEG | LUMINOUS INTENSITY:cd | | | | | | | | | UNIT:lm | | |

Conical surface Flux(90deg): 190.08 lm

%lum = 51.2%

%lamp = 51.2%

Conical surface Flux(130deg): 301.83 lm

%lum = 81.4%

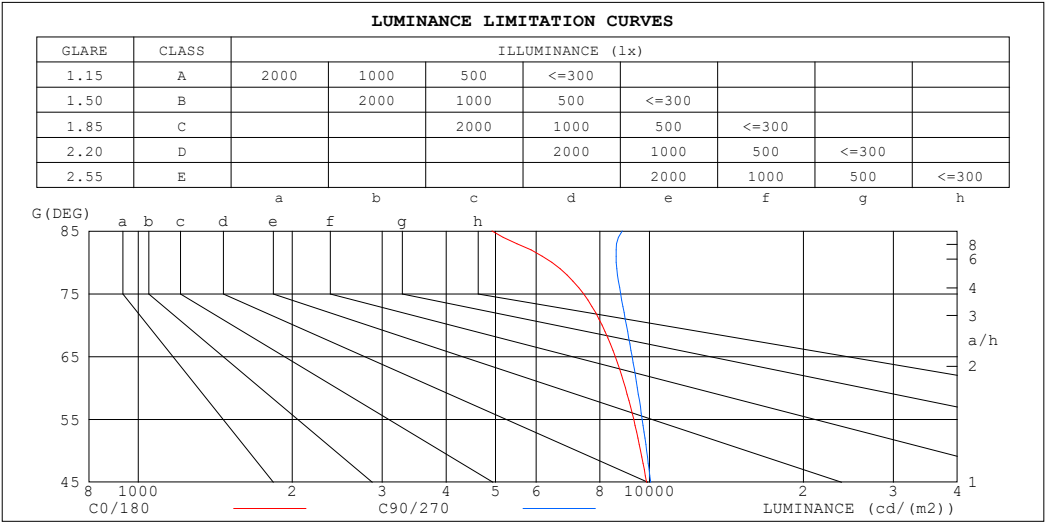
%lamp = 81.4%

C Range: 0 - 360DEG
 C Interval: 30.0DEG
 Test Speed: HIGH
 Temperature:25.3℃
 Operators:
 Test Date:2025-03-06

γ Range: 0 - 180DEG
 γ Interval: 1.0DEG
 Test System:EVERFINE GO-2000B_V1 SYSTEM V2.00.488
 Humidity:65.0%
 Test Distance:6.360m [K=1.0000]
 Remarks:

LUMINANCE LIMITATION CURVES

| | | |
|--|-----------------|------------------|
| Test:U:24.00V I:0.7283A P:17.48W PF:1.000 Freq:0Hz Lamp Flux:370.889x1 lm | | |
| NAME: SF15-24V-5050-70-SPI-RGBW(4000K)-ALL | TYPE: | WEIGHT: |
| SPEC.: | DIM.: Length=1m | SERIAL No.: |
| MFR.: OLympia lighting | SUR.: | Shielding Angle: |



| LUMINANCE cd/(m2) | | |
|-------------------|--------|---------|
| G (DEG) | C0/180 | C90/270 |
| 85 | 4920 | 8842 |
| 80 | 6443 | 8610 |
| 75 | 7429 | 8785 |
| 70 | 8078 | 9009 |
| 65 | 8571 | 9248 |
| 60 | 8971 | 9469 |
| 55 | 9313 | 9675 |
| 50 | 9609 | 9872 |
| 45 | 9867 | 10054 |

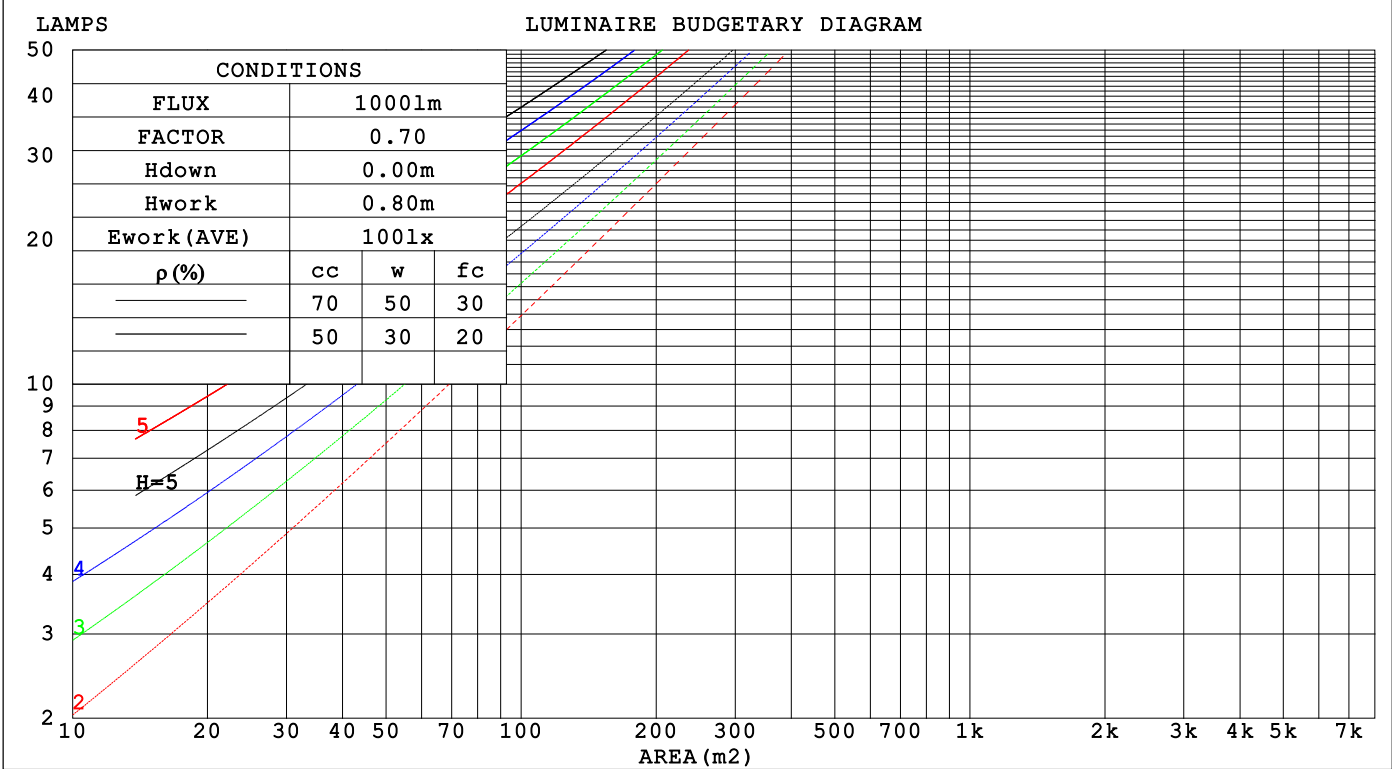
C Range: 0 - 360DEG
C Interval: 30.0DEG
Test Speed: HIGH
Temperature:25.3℃
Operators:
Test Date:2025-03-06

γ Range: 0 - 180DEG
γ Interval: 1.0DEG
Test System:EVERFINE GO-2000B_V1 SYSTEM V2.00.488
Humidity:65.0%
Test Distance:6.360m [K=1.0000]
Remarks:

CU AND LUMINAIRE BUDGETARY ESTIMATE DIAGRAM

| | | |
|--|-----------------|------------------|
| Test:U:24.00V I:0.7283A P:17.48W PF:1.000 Freq:0Hz Lamp Flux:370.889x1 lm | | |
| NAME: SF15-24V-5050-70-SPI-RGBW(4000K)-ALL | TYPE: | WEIGHT: |
| SPEC.: | DIM.: Length=1m | SERIAL No.: |
| MFR.: OLYMPIA lighting | SUR.: | Shielding Angle: |

| | | | | | | | | | | | | | | | | |
|-----|-----------------------|-----|-----|-----|-----|-----|-----|-----|-----|-----|-----|-----|-----|-----|-----|---|
| pcc | 80% | | | 70% | | | 50% | | | 30% | | | 10% | | | 0 |
| pw | 50% | 30% | 10% | 50% | 30% | 10% | 50% | 30% | 10% | 50% | 30% | 10% | 50% | 30% | 10% | 0 |
| pfc | 20% | | | 20% | | | 20% | | | 20% | | | 20% | | | 0 |
| RCR | RCR:Room Cavity Ratio | | | | | | | | | | | | | | | |



C Range: 0 - 360DEG
C Interval: 30.0DEG
Test Speed: HIGH
Temperature:25.3℃
Operators:
Test Date:2025-03-06

γ Range: 0 - 180DEG
γ Interval: 1.0DEG
Test System:EVERFINE GO-2000B_V1 SYSTEM V2.00.488
Humidity:65.0%
Test Distance:6.360m [K=1.0000]
Remarks:

WEC AND CCEC

| | | |
|--|-----------------|------------------|
| Test:U:24.00V I:0.7283A P:17.48W PF:1.000 Freq:0Hz Lamp Flux:370.889x1 lm | | |
| NAME: SF15-24V-5050-70-SPI-RGBW(4000K)-ALL | TYPE: | WEIGHT: |
| SPEC.: | DIM.: Length=1m | SERIAL No.: |
| MFR.: OLympia lighting | SUR.: | Shielding Angle: |

| pcc | 80% | | | 70% | | | 50% | | | 30% | | | 10% | | | 0 | | | | | | | | | | | | | | |
|------|-----------------------|------|------|------|------|------|------|------|------|------|------|------|------|------|------|---------------------------------|--|--|--|--|--|--|--|--|--|--|--|--|--|--|
| pw | 50% | 30% | 10% | 50% | 30% | 10% | 50% | 30% | 10% | 50% | 30% | 10% | 50% | 30% | 10% | 0 | | | | | | | | | | | | | | |
| pfc | 20% | | | 20% | | | 20% | | | 20% | | | 20% | | | 0 | | | | | | | | | | | | | | |
| RCR | RCR:Room Cavity Ratio | | | | | | | | | | | | | | | Wall Exitance Coefficients(WEC) | | | | | | | | | | | | | | |
| 0.0 | | | | | | | | | | | | | | | | | | | | | | | | | | | | | | |
| 1.0 | .314 | .178 | .056 | .305 | .174 | .055 | .290 | .166 | .053 | .276 | .159 | .051 | .262 | .152 | .049 | | | | | | | | | | | | | | | |
| 2.0 | .293 | .160 | .049 | .285 | .157 | .048 | .272 | .151 | .047 | .259 | .145 | .045 | .247 | .140 | .044 | | | | | | | | | | | | | | | |
| 3.0 | .270 | .144 | .043 | .263 | .141 | .042 | .251 | .136 | .041 | .240 | .131 | .040 | .229 | .127 | .039 | | | | | | | | | | | | | | | |
| 4.0 | .249 | .129 | .038 | .243 | .127 | .038 | .232 | .123 | .037 | .222 | .119 | .036 | .212 | .115 | .035 | | | | | | | | | | | | | | | |
| 5.0 | .230 | .117 | .034 | .224 | .115 | .034 | .215 | .112 | .033 | .205 | .108 | .032 | .197 | .105 | .032 | | | | | | | | | | | | | | | |
| 6.0 | .213 | .107 | .031 | .208 | .105 | .030 | .199 | .102 | .030 | .191 | .099 | .029 | .183 | .097 | .029 | | | | | | | | | | | | | | | |
| 7.0 | .198 | .098 | .028 | .194 | .097 | .028 | .186 | .094 | .027 | .178 | .091 | .027 | .171 | .089 | .026 | | | | | | | | | | | | | | | |
| 8.0 | .185 | .090 | .025 | .181 | .089 | .025 | .174 | .087 | .025 | .167 | .085 | .024 | .161 | .083 | .024 | | | | | | | | | | | | | | | |
| 9.0 | .173 | .084 | .023 | .170 | .083 | .023 | .163 | .081 | .023 | .157 | .079 | .023 | .151 | .077 | .022 | | | | | | | | | | | | | | | |
| 10.0 | .163 | .078 | .022 | .160 | .077 | .022 | .154 | .075 | .021 | .148 | .074 | .021 | .143 | .072 | .021 | | | | | | | | | | | | | | | |

| pcc | 80% | | | 70% | | | 50% | | | 30% | | | 10% | | | 0 |
|------|-----------------------|------|------|------|------|------|---|------|------|------|------|------|------|------|------|---|
| pw | 50% | 30% | 10% | 50% | 30% | 10% | 50% | 30% | 10% | 50% | 30% | 10% | 50% | 30% | 10% | 0 |
| pfc | 20% | | | 20% | | | 20% | | | 20% | | | 20% | | | 0 |
| RCR | RCR:Room Cavity Ratio | | | | | | Ceiling Cavity Exitance Coefficients (CCEC) | | | | | | | | | |
| 0.0 | .220 | .220 | .220 | .188 | .188 | .188 | .129 | .129 | .129 | .074 | .074 | .074 | .024 | .024 | .024 | |
| 1.0 | .211 | .186 | .164 | .180 | .160 | .141 | .123 | .110 | .098 | .071 | .064 | .057 | .023 | .020 | .018 | |
| 2.0 | .203 | .162 | .128 | .174 | .140 | .111 | .119 | .097 | .077 | .069 | .056 | .045 | .022 | .018 | .015 | |
| 3.0 | .195 | .145 | .105 | .167 | .125 | .091 | .115 | .087 | .064 | .066 | .051 | .038 | .021 | .016 | .012 | |
| 4.0 | .187 | .132 | .089 | .161 | .114 | .077 | .111 | .079 | .054 | .064 | .046 | .032 | .021 | .015 | .011 | |
| 5.0 | .180 | .121 | .078 | .155 | .105 | .068 | .106 | .073 | .048 | .062 | .043 | .028 | .020 | .014 | .009 | |
| 6.0 | .173 | .113 | .070 | .149 | .098 | .061 | .102 | .069 | .043 | .059 | .040 | .026 | .019 | .013 | .008 | |
| 7.0 | .166 | .106 | .064 | .143 | .092 | .056 | .099 | .065 | .040 | .057 | .038 | .024 | .019 | .012 | .008 | |
| 8.0 | .160 | .100 | .060 | .137 | .087 | .052 | .095 | .061 | .037 | .055 | .036 | .022 | .018 | .012 | .007 | |
| 9.0 | .154 | .096 | .056 | .132 | .083 | .049 | .092 | .058 | .035 | .053 | .034 | .021 | .017 | .011 | .007 | |
| 10.0 | .148 | .091 | .054 | .127 | .079 | .047 | .088 | .056 | .033 | .052 | .033 | .020 | .017 | .011 | .007 | |

C Range: 0 - 360DEG
C Interval: 30.0DEG
Test Speed: HIGH
Temperature:25.3℃
Operators:
Test Date:2025-03-06

γ Range: 0 - 180DEG
γ Interval: 1.0DEG
Test System:EVERFINE GO-2000B_V1 SYSTEM V2.00.488
Humidity:65.0%
Test Distance:6.360m [K=1.0000]
Remarks:

UGR(Unified Glare Rating) Table

| | | | | | | | | | | | |
|--|---------------|------------------|------|------|------|-----------------|----------------|------------------|------|------|------|
| Test:U:24.00V I:0.7283A P:17.48W PF:1.000 Freq:0Hz Lamp Flux:370.889x1 lm | | | | | | | | | | | |
| NAME: SF15-24V-5050-70-SPI-RGBW(4000K)-ALL | | | | | | TYPE: | | WEIGHT: | | | |
| SPEC.: | | | | | | DIM.: Length=1m | | SERIAL No.: | | | |
| MFR.: OLympia lighting | | | | | | SUR.: | | Shielding Angle: | | | |
| ceiling/cavity | 0.7 | 0.7 | 0.5 | 0.5 | 0.3 | 0.7 | 0.7 | 0.5 | 0.5 | 0.3 | |
| walls | 0.5 | 0.3 | 0.5 | 0.3 | 0.3 | 0.5 | 0.3 | 0.5 | 0.3 | 0.3 | |
| working plane | 0.2 | 0.2 | 0.2 | 0.2 | 0.2 | 0.2 | 0.2 | 0.2 | 0.2 | 0.2 | |
| Room dimensions | | Viewed crosswise | | | | | Viewed endwise | | | | |
| x = 2H y = 2H | 23.6 | 25.0 | 23.9 | 25.3 | 25.6 | 23.8 | 25.2 | 24.1 | 25.5 | 25.8 | |
| | 3H | 25.0 | 26.4 | 25.4 | 26.7 | 27.0 | 25.4 | 26.7 | 25.7 | 27.0 | 27.3 |
| | 4H | 25.6 | 26.9 | 26.0 | 27.2 | 27.6 | 26.1 | 27.3 | 26.4 | 27.7 | 28.0 |
| | 6H | 26.0 | 27.2 | 26.4 | 27.6 | 27.9 | 26.6 | 27.8 | 27.0 | 28.2 | 28.5 |
| | 8H | 26.1 | 27.3 | 26.5 | 27.6 | 28.0 | 26.8 | 28.0 | 27.2 | 28.3 | 28.7 |
| | 12H | 26.2 | 27.3 | 26.6 | 27.7 | 28.0 | 27.0 | 28.1 | 27.4 | 28.5 | 28.9 |
| 4H | 2H | 24.2 | 25.5 | 24.6 | 25.8 | 26.1 | 24.3 | 25.6 | 24.7 | 25.9 | 26.3 |
| | 3H | 25.8 | 27.0 | 26.2 | 27.3 | 27.7 | 26.1 | 27.2 | 26.5 | 27.6 | 28.0 |
| | 4H | 26.5 | 27.6 | 27.0 | 28.0 | 28.4 | 26.9 | 28.0 | 27.4 | 28.4 | 28.8 |
| | 6H | 27.1 | 28.0 | 27.5 | 28.4 | 28.8 | 27.6 | 28.6 | 28.1 | 29.0 | 29.4 |
| | 8H | 27.2 | 28.1 | 27.7 | 28.5 | 29.0 | 27.9 | 28.8 | 28.4 | 29.2 | 29.7 |
| | 12H | 27.3 | 28.1 | 27.8 | 28.5 | 29.0 | 28.1 | 28.9 | 28.6 | 29.4 | 29.9 |
| 8H | 4H | 26.8 | 27.7 | 27.3 | 28.1 | 28.6 | 27.2 | 28.0 | 27.7 | 28.5 | 29.0 |
| | 6H | 27.5 | 28.2 | 28.0 | 28.7 | 29.2 | 28.0 | 28.8 | 28.6 | 29.2 | 29.7 |
| | 8H | 27.7 | 28.4 | 28.3 | 28.9 | 29.4 | 28.4 | 29.0 | 28.9 | 29.5 | 30.1 |
| | 12H | 27.9 | 28.4 | 28.4 | 28.9 | 29.5 | 28.7 | 29.3 | 29.3 | 29.8 | 30.4 |
| 12H | 4H | 26.9 | 27.6 | 27.3 | 28.1 | 28.6 | 27.2 | 28.0 | 27.7 | 28.4 | 28.9 |
| | 6H | 27.6 | 28.2 | 28.1 | 28.7 | 29.2 | 28.1 | 28.7 | 28.6 | 29.2 | 29.8 |
| | 8H | 27.9 | 28.4 | 28.4 | 28.9 | 29.5 | 28.5 | 29.1 | 29.1 | 29.6 | 30.1 |
| Variations with the observer position at spacings(CIE Pub.117): | | | | | | | | | | | |
| S = 1.0H | + 0.2 / - 0.2 | | | | | + 0.1 / - 0.2 | | | | | |
| 1.5H | + 0.2 / - 0.3 | | | | | + 0.2 / - 0.3 | | | | | |
| 2.0H | + 0.2 / - 0.3 | | | | | + 0.1 / - 0.2 | | | | | |

CIE Pub.117, 370.9 lm Total Lamp Luminous Flux Correct (8log(F/F0) = -3.4)
Area: 0.0115 m2

C Range: 0 - 360DEG
C Interval: 30.0DEG
Test Speed: HIGH
Temperature:25.3℃
Operators:
Test Date:2025-03-06

γ Range: 0 - 180DEG
γ Interval: 1.0DEG
Test System:EVERFINE GO-2000B_V1 SYSTEM V2.00.488
Humidity:65.0%
Test Distance:6.360m [K=1.0000]
Remarks:

UTILIZATION FACTORS TABLE

| | | |
|--|-----------------|------------------|
| Test:U:24.00V I:0.7283A P:17.48W PF:1.000 Freq:0Hz Lamp Flux:370.889x1 lm | | |
| NAME: SF15-24V-5050-70-SPI-RGBW(4000K)-ALL | TYPE: | WEIGHT: |
| SPEC.: | DIM.: Length=1m | SERIAL No.: |
| MFR.: OLympia lighting | SUR.: | Shielding Angle: |

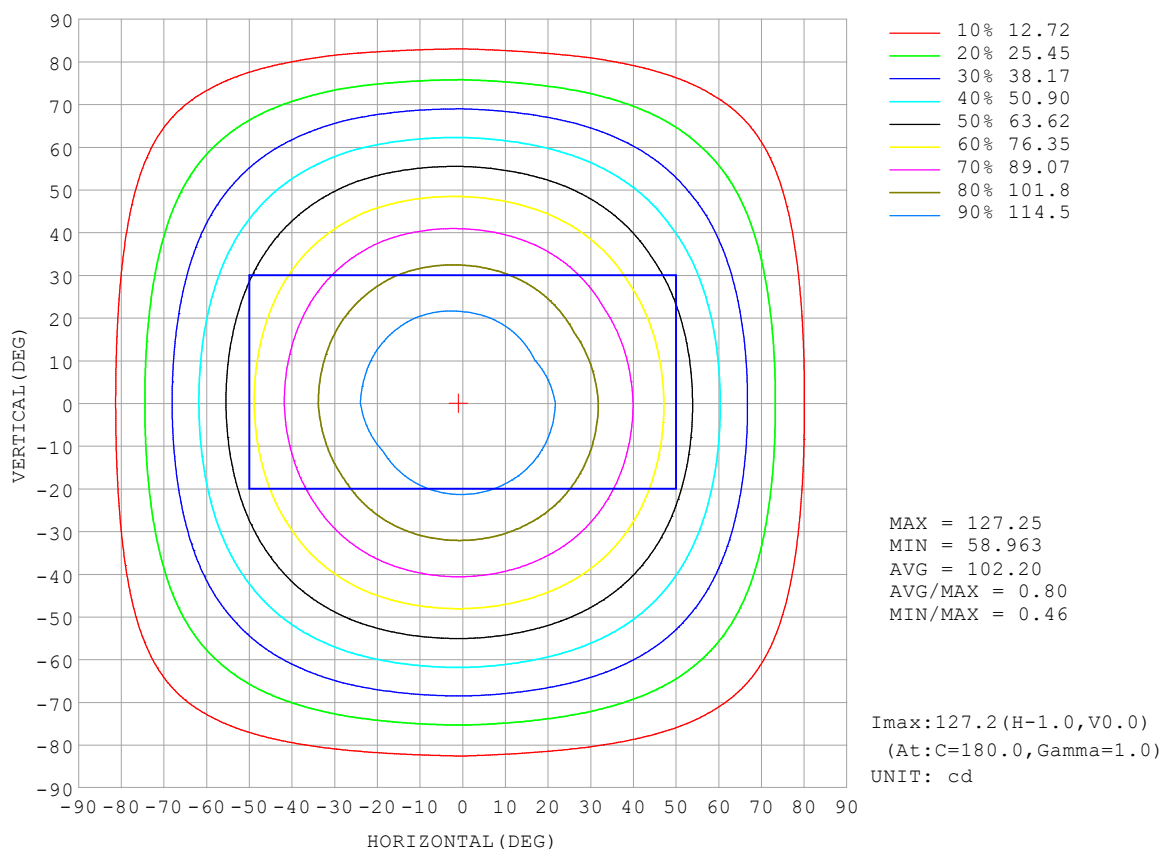
| REFLECTANCE | | | | | | | | | | |
|----------------------------------|--|-----|-----------|-----|-----|-----|-----|---------------|-----|--------|
| Ceiling | 0.8 | 0.8 | 0.8 | 0.7 | 0.7 | 0.7 | 0.5 | 0.5 | 0.5 | 0 |
| Walls | 0.7 | 0.5 | 0.3 | 0.7 | 0.5 | 0.3 | 0.7 | 0.5 | 0.3 | 0 |
| Working plane | 0.2 | 0.2 | 0.2 | 0.2 | 0.2 | 0.2 | 0.2 | 0.2 | 0.2 | 0 |
| ROOM INDEX | UTILIZATION FACTORS (PERCENT) $k(RI) \times RCR = 5$ | | | | | | | | | |
| $k = 0.60$ | 56 | 45 | 38 | 55 | 44 | 38 | 54 | 44 | 37 | 31 |
| 0.80 | 66 | 55 | 47 | 65 | 54 | 47 | 63 | 53 | 46 | 39 |
| 1.00 | 75 | 63 | 56 | 73 | 63 | 56 | 71 | 64 | 55 | 47 |
| 1.25 | 82 | 71 | 64 | 80 | 70 | 63 | 77 | 68 | 62 | 54 |
| 1.50 | 87 | 76 | 69 | 85 | 75 | 69 | 81 | 73 | 67 | 59 |
| 2.00 | 93 | 85 | 78 | 91 | 83 | 77 | 87 | 81 | 75 | 67 |
| 2.50 | 97 | 89 | 83 | 95 | 88 | 82 | 91 | 85 | 80 | 71 |
| 3.00 | 101 | 94 | 88 | 98 | 92 | 87 | 94 | 88 | 84 | 75 |
| 4.00 | 105 | 99 | 94 | 102 | 97 | 92 | 97 | 93 | 89 | 79 |
| 5.00 | 107 | 102 | 98 | 105 | 100 | 96 | 99 | 96 | 93 | 82 |
| ROOM INDEX | UF (total) | | | | | | | | | Direct |
| According to DIN EN 13032-2 2004 | | | Suspended | | | | | SHRNOM = 1.25 | | |

C Range: 0 - 360DEG
 C Interval: 30.0DEG
 Test Speed: HIGH
 Temperature: 25.3 °C
 Operators:
 Test Date: 2025-03-06

γ Range: 0 - 180DEG
 γ Interval: 1.0DEG
 Test System: EVERFINE GO-2000B_V1 SYSTEM V2.00.488
 Humidity: 65.0%
 Test Distance: 6.360m [K=1.0000]
 Remarks:

ISOCANDELA DIAGRAM

| | | |
|--|-----------------|------------------|
| Test:U:24.00V I:0.7283A P:17.48W PF:1.000 Freq:0Hz Lamp Flux:370.889x1 lm | | |
| NAME: SF15-24V-5050-70-SPI-RGBW(4000K)-ALL | TYPE: | WEIGHT: |
| SPEC.: | DIM.: Length=1m | SERIAL No.: |
| MFR.: OLympia lighting | SUR.: | Shielding Angle: |

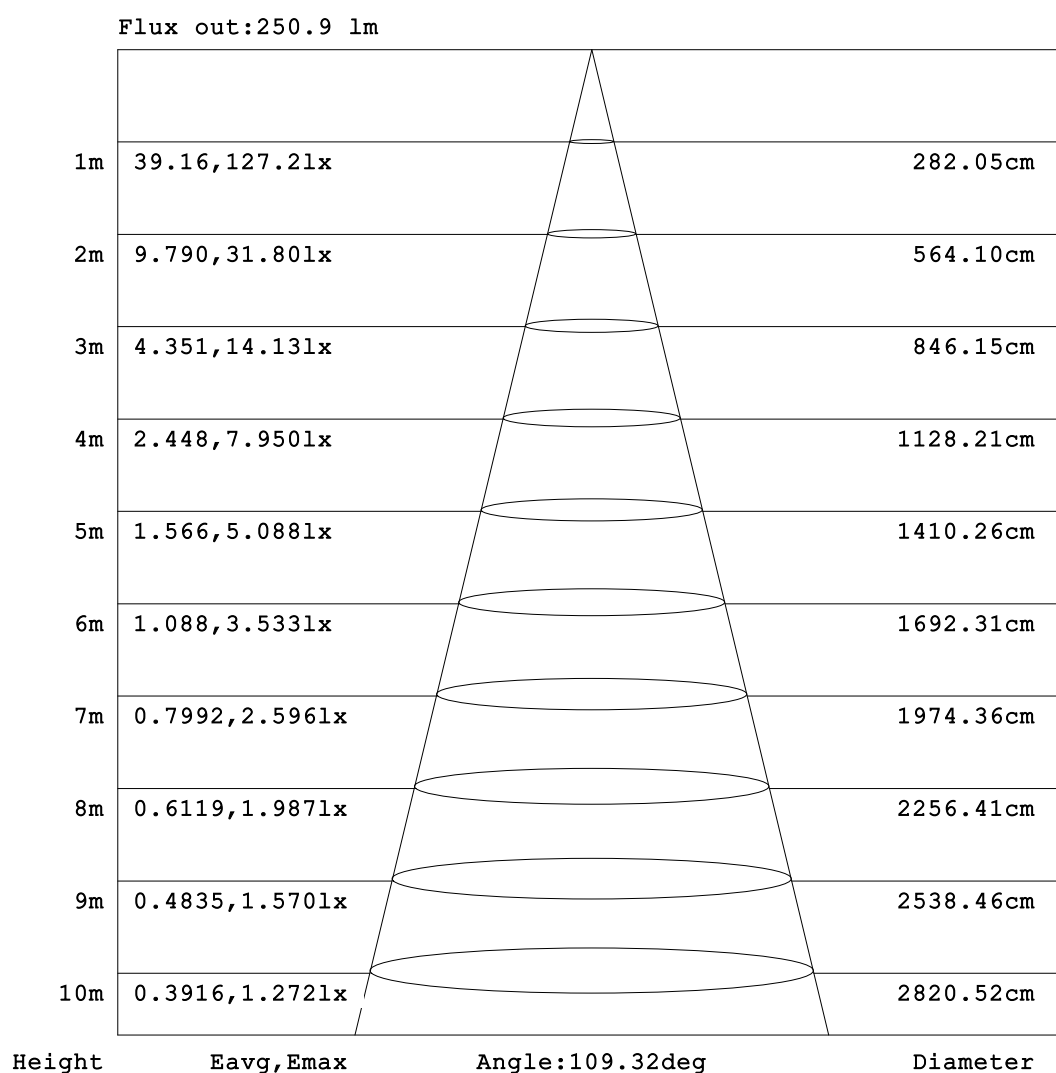


C Range: 0 - 360DEG
C Interval: 30.0DEG
Test Speed: HIGH
Temperature:25.3℃
Operators:
Test Date:2025-03-06

γ Range: 0 - 180DEG
γ Interval: 1.0DEG
Test System:EVERFINE GO-2000B_V1 SYSTEM V2.00.488
Humidity:65.0%
Test Distance:6.360m [K=1.0000]
Remarks:

AAI Figure

| | | |
|--|-----------------|------------------|
| Test:U:24.00V I:0.7283A P:17.48W PF:1.000 Freq:0Hz Lamp Flux:370.889x1 lm | | |
| NAME: SF15-24V-5050-70-SPI-RGBW(4000K)-ALL | TYPE: | WEIGHT: |
| SPEC.: | DIM.: Length=1m | SERIAL No.: |
| MFR.: OLympia lighting | SUR.: | Shielding Angle: |



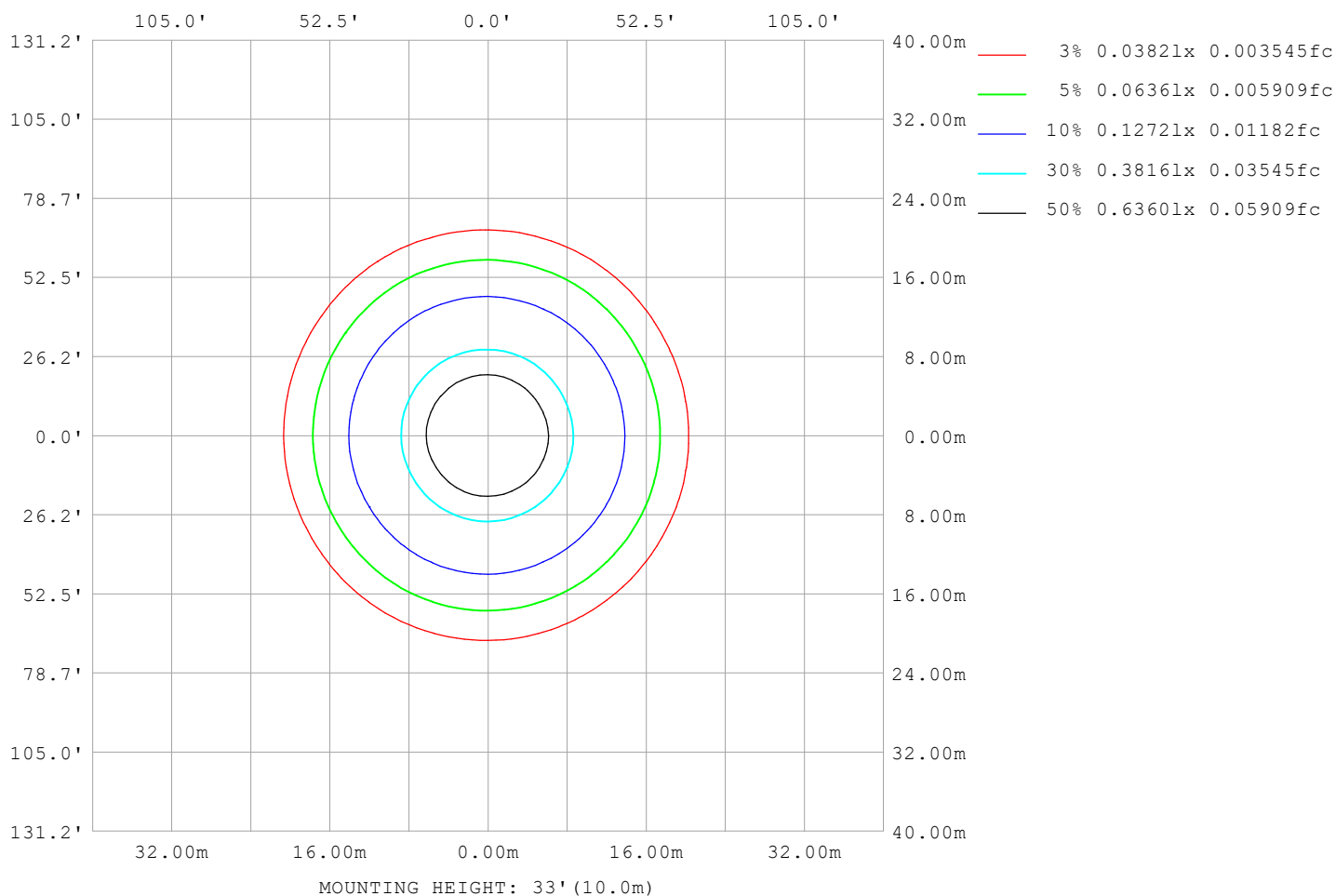
Note: The Curves indicate the illuminated area and the average illumination when the luminaire is at different distance.

C Range: 0 - 360DEG
C Interval: 30.0DEG
Test Speed: HIGH
Temperature: 25.3°C
Operators:
Test Date: 2025-03-06

γ Range: 0 - 180DEG
γ Interval: 1.0DEG
Test System: EVERFINE GO-2000B_V1 SYSTEM V2.00.488
Humidity: 65.0%
Test Distance: 6.360m [K=1.0000]
Remarks:

ISOLUX DIAGRAM

| | | |
|--|-----------------|------------------|
| Test:U:24.00V I:0.7283A P:17.48W PF:1.000 Freq:0Hz Lamp Flux:370.889x1 lm | | |
| NAME: SF15-24V-5050-70-SPI-RGBW(4000K)-ALL | TYPE: | WEIGHT: |
| SPEC.: | DIM.: Length=1m | SERIAL No.: |
| MFR.: OLympia lighting | SUR.: | Shielding Angle: |



C Range: 0 - 360DEG
C Interval: 30.0DEG
Test Speed: HIGH
Temperature: 25.3°C
Operators:
Test Date: 2025-03-06

γ Range: 0 - 180DEG
γ Interval: 1.0DEG
Test System: EVERFINE GO-2000B_V1 SYSTEM V2.00.488
Humidity: 65.0%
Test Distance: 6.360m [K=1.0000]
Remarks:

LED Avg.L Report

| | | |
|--|-----------------|------------------|
| Test:U:24.00V I:0.7283A P:17.48W PF:1.000 Freq:0Hz Lamp Flux:370.889x1 lm | | |
| NAME: SF15-24V-5050-70-SPI-RGBW(4000K)-ALL | TYPE: | WEIGHT: |
| SPEC.: | DIM.: Length=1m | SERIAL No.: |
| MFR.: OLympia lighting | SUR.: | Shielding Angle: |

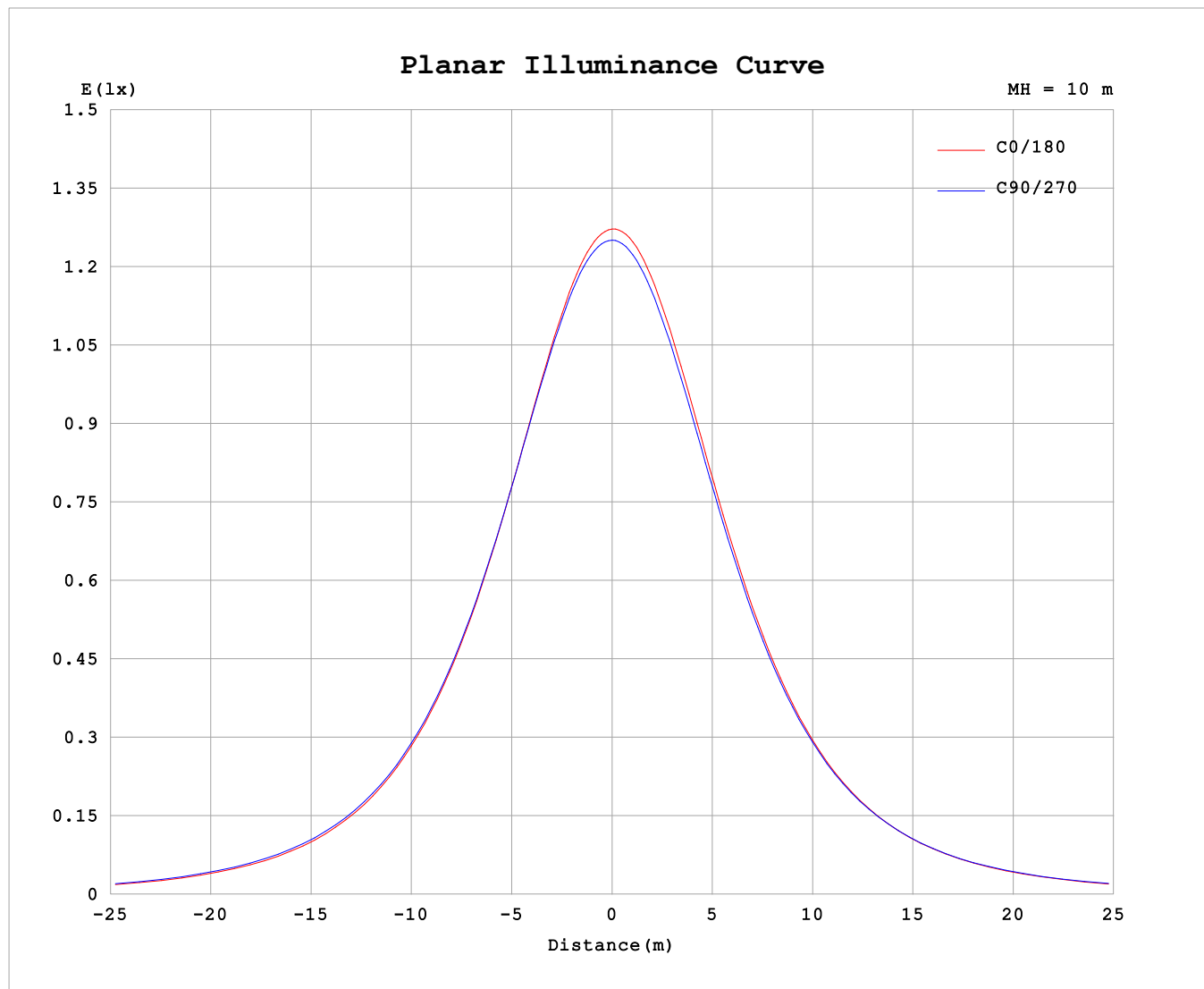
| AvgL | cd/m2 |
|------------------|-------|
| L_0~180 (65) av | 8739 |
| L_0~180 (75) av | 7715 |
| L_0~180 (85) av | 5609 |
| L_90~270 (65) av | 9355 |
| L_90~270 (75) av | 8937 |
| L_90~270 (85) av | 9168 |
| L_45 (65) av | 9094 |
| L_45 (75) av | 8361 |
| L_45 (85) av | 7189 |

Standard: GB/T 29293-2012

C Range: 0 - 360DEG
C Interval: 30.0DEG
Test Speed: HIGH
Temperature:25.3℃
Operators:
Test Date:2025-03-06

γ Range: 0 - 180DEG
γ Interval: 1.0DEG
Test System:EVERFINE GO-2000B_V1 SYSTEM V2.00.488
Humidity:65.0%
Test Distance:6.360m [K=1.0000]
Remarks:

Planar Illuminance Curve



C Range: 0 - 360DEG
C Interval: 30.0DEG
Test Speed: HIGH
Temperature: 25.3 °C
Operators:
Test Date: 2025-03-06

γ Range: 0 - 180DEG
 γ Interval: 1.0DEG
Test System: EVERFINE GO-2000B_V1 SYSTEM V2.00.488
Humidity: 65.0%
Test Distance: 6.360m [K=1.0000]
Remarks:

LUMINOUS DISTRIBUTION INTENSITY DATA

| | | |
|--|-----------------|------------------|
| Test:U:24.00V I:0.7283A P:17.48W PF:1.000 Freq:0Hz Lamp Flux:370.889x1 lm | | |
| NAME: SF15-24V-5050-70-SPI-RGBW(4000K)-ALL | TYPE: | WEIGHT: |
| SPEC.: | DIM.: Length=1m | SERIAL No.: |
| MFR.: OLYMPIA lighting | SUR.: | Shielding Angle: |

Table--1

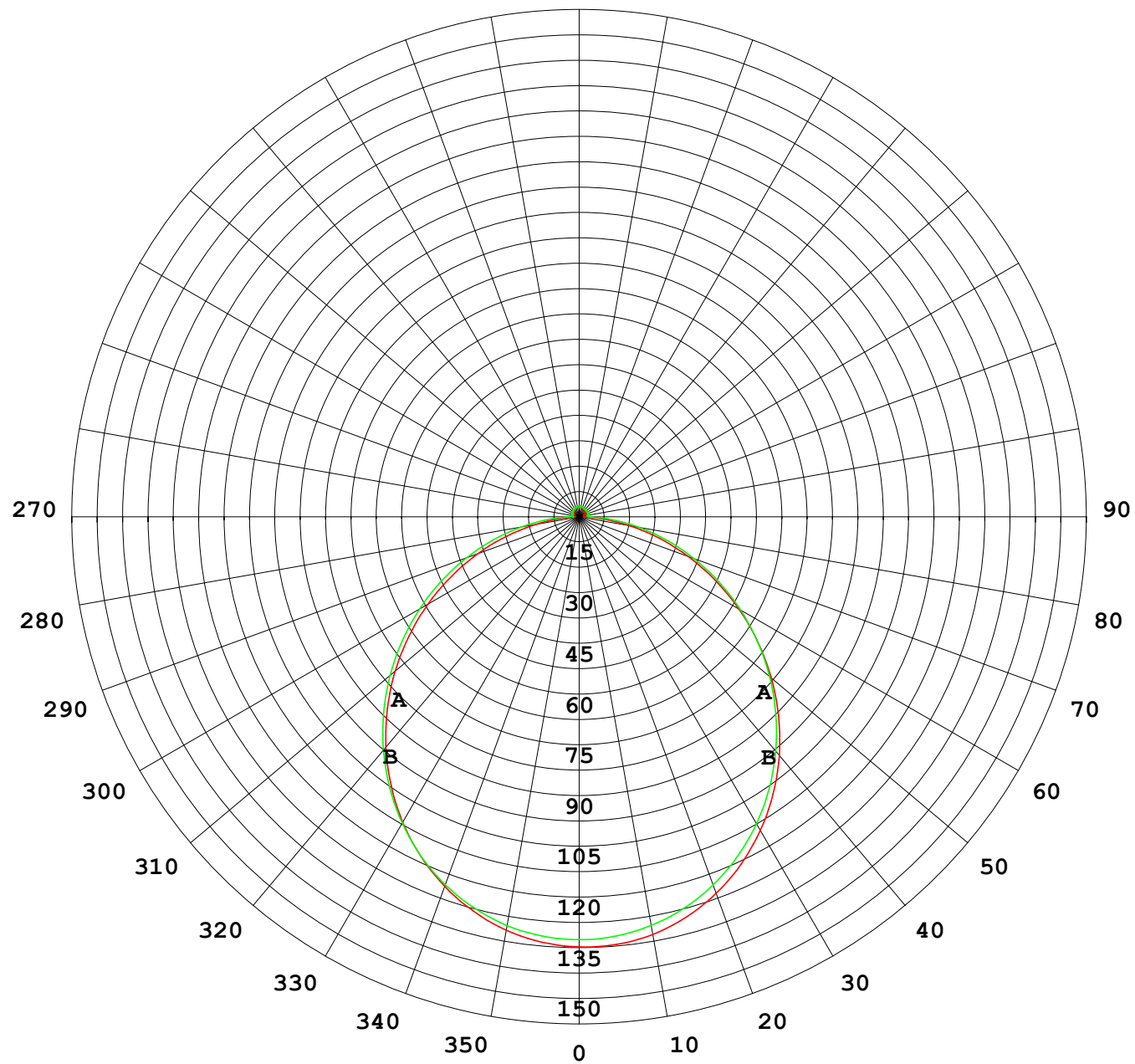
UNIT: cd

| C (DEG) γ (DEG) | 0 | 30 | 60 | 90 | 120 | 150 | 180 | 210 | 240 | 270 | 300 | 330 | | | | | | | |
|--------------------|------|------|------|------|------|------|------|------|------|------|------|------|--|--|--|--|--|--|--|
| 0 | 126 | 126 | 126 | 126 | 126 | 126 | 126 | 126 | 126 | 126 | 126 | 126 | | | | | | | |
| 5 | 125 | 125 | 125 | 125 | 125 | 125 | 125 | 125 | 125 | 125 | 125 | 125 | | | | | | | |
| 10 | 122 | 123 | 123 | 123 | 123 | 124 | 124 | 124 | 124 | 123 | 123 | 123 | | | | | | | |
| 15 | 119 | 120 | 120 | 120 | 121 | 121 | 121 | 121 | 121 | 120 | 120 | 120 | | | | | | | |
| 20 | 115 | 115 | 116 | 116 | 117 | 117 | 117 | 117 | 117 | 116 | 116 | 115 | | | | | | | |
| 25 | 109 | 110 | 110 | 111 | 112 | 112 | 112 | 112 | 112 | 111 | 111 | 110 | | | | | | | |
| 30 | 103 | 104 | 104 | 105 | 106 | 106 | 106 | 106 | 106 | 105 | 105 | 104 | | | | | | | |
| 35 | 95.7 | 96.4 | 97.1 | 98.1 | 98.9 | 99.3 | 98.7 | 99.4 | 99.4 | 98.4 | 97.6 | 96.5 | | | | | | | |
| 40 | 87.8 | 88.5 | 89.3 | 90.4 | 91.2 | 91.6 | 90.9 | 91.6 | 91.8 | 90.8 | 89.9 | 88.6 | | | | | | | |
| 45 | 79.2 | 80.0 | 80.9 | 82.1 | 82.9 | 83.1 | 82.3 | 83.1 | 83.5 | 82.5 | 81.6 | 80.1 | | | | | | | |
| 50 | 70.1 | 70.9 | 72.0 | 73.2 | 74.0 | 74.0 | 73.2 | 74.0 | 74.7 | 73.8 | 72.8 | 71.1 | | | | | | | |
| 55 | 60.6 | 61.5 | 62.8 | 64.1 | 64.7 | 64.4 | 63.7 | 64.5 | 65.4 | 64.7 | 63.6 | 61.7 | | | | | | | |
| 60 | 50.9 | 51.9 | 53.3 | 54.6 | 55.1 | 54.5 | 53.8 | 54.6 | 55.8 | 55.3 | 54.1 | 52.1 | | | | | | | |
| 65 | 41.1 | 42.1 | 43.7 | 45.1 | 45.3 | 44.5 | 43.8 | 44.6 | 46.1 | 45.8 | 44.6 | 42.4 | | | | | | | |
| 70 | 31.4 | 32.4 | 34.2 | 35.6 | 35.5 | 34.6 | 33.9 | 34.6 | 36.3 | 36.3 | 35.0 | 32.7 | | | | | | | |
| 75 | 21.8 | 22.9 | 24.8 | 26.2 | 25.9 | 24.9 | 24.1 | 24.9 | 26.7 | 27.0 | 25.6 | 23.3 | | | | | | | |
| 80 | 12.7 | 13.9 | 15.7 | 17.3 | 16.7 | 15.6 | 14.9 | 15.7 | 17.4 | 18.0 | 16.5 | 14.3 | | | | | | | |
| 85 | 4.87 | 5.73 | 7.26 | 8.90 | 8.00 | 7.02 | 6.38 | 7.07 | 8.70 | 9.48 | 7.98 | 6.05 | | | | | | | |
| 90 | 1.40 | 1.57 | 1.77 | 1.97 | 1.82 | 1.54 | 1.28 | 1.66 | 2.28 | 2.51 | 2.30 | 1.67 | | | | | | | |
| 95 | 1.42 | 1.61 | 1.76 | 2.01 | 1.84 | 1.60 | 1.34 | 1.64 | 2.32 | 2.54 | 2.33 | 1.67 | | | | | | | |
| 100 | 1.53 | 1.69 | 1.86 | 2.12 | 1.95 | 1.73 | 1.44 | 1.74 | 2.42 | 2.61 | 2.43 | 1.76 | | | | | | | |
| 105 | 1.64 | 1.77 | 1.95 | 2.20 | 2.07 | 1.84 | 1.54 | 1.85 | 2.51 | 2.70 | 2.52 | 1.87 | | | | | | | |
| 110 | 1.76 | 1.86 | 2.04 | 2.27 | 2.19 | 1.96 | 1.66 | 1.96 | 2.60 | 2.78 | 2.58 | 1.99 | | | | | | | |
| 115 | 1.88 | 1.97 | 2.14 | 2.35 | 2.28 | 2.07 | 1.76 | 2.06 | 2.65 | 2.79 | 2.62 | 2.11 | | | | | | | |
| 120 | 1.99 | 2.09 | 2.23 | 2.41 | 2.37 | 2.19 | 1.87 | 2.15 | 2.69 | 2.80 | 2.60 | 2.20 | | | | | | | |
| 125 | 2.11 | 2.21 | 2.36 | 2.49 | 2.45 | 2.28 | 1.98 | 2.23 | 2.72 | 2.82 | 2.62 | 2.31 | | | | | | | |
| 130 | 2.24 | 2.35 | 2.47 | 2.57 | 2.53 | 2.38 | 2.09 | 2.31 | 2.75 | 2.83 | 2.66 | 2.39 | | | | | | | |
| 135 | 2.37 | 2.46 | 2.56 | 2.64 | 2.61 | 2.47 | 2.19 | 2.39 | 2.77 | 2.84 | 2.69 | 2.38 | | | | | | | |
| 140 | 2.47 | 2.54 | 2.64 | 2.72 | 2.68 | 2.56 | 2.30 | 2.47 | 2.80 | 2.86 | 2.74 | 2.43 | | | | | | | |
| 145 | 2.55 | 2.62 | 2.72 | 2.80 | 2.75 | 2.64 | 2.41 | 2.56 | 2.84 | 2.87 | 2.78 | 2.51 | | | | | | | |
| 150 | 2.64 | 2.70 | 2.79 | 2.88 | 2.82 | 2.74 | 2.52 | 2.64 | 2.88 | 2.92 | 2.82 | 2.59 | | | | | | | |
| 155 | 2.74 | 2.79 | 2.85 | 2.95 | 2.88 | 2.83 | 2.63 | 2.73 | 2.93 | 2.95 | 2.90 | 2.67 | | | | | | | |
| 160 | 2.82 | 2.87 | 2.92 | 3.00 | 2.94 | 2.91 | 2.75 | 2.81 | 2.97 | 2.98 | 2.95 | 2.75 | | | | | | | |
| 165 | 2.91 | 2.94 | 2.97 | 3.05 | 2.99 | 2.99 | 2.86 | 2.88 | 3.02 | 3.02 | 3.00 | 2.83 | | | | | | | |
| 170 | 2.94 | 3.02 | 3.02 | 3.08 | 3.04 | 3.05 | 2.92 | 2.96 | 3.05 | 3.04 | 3.03 | 2.97 | | | | | | | |
| 175 | 2.99 | 3.07 | 3.07 | 3.12 | 3.09 | 3.09 | 2.99 | 3.02 | 3.08 | 3.07 | 3.08 | 3.03 | | | | | | | |
| 180 | 3.01 | 3.07 | 3.09 | 3.12 | 3.10 | 3.10 | 3.02 | 3.06 | 3.11 | 3.11 | 3.12 | 3.08 | | | | | | | |

C Range: 0 - 360DEG
C Interval: 30.0DEG
Test Speed: HIGH
Temperature:25.3℃
Operators:
Test Date:2025-03-06

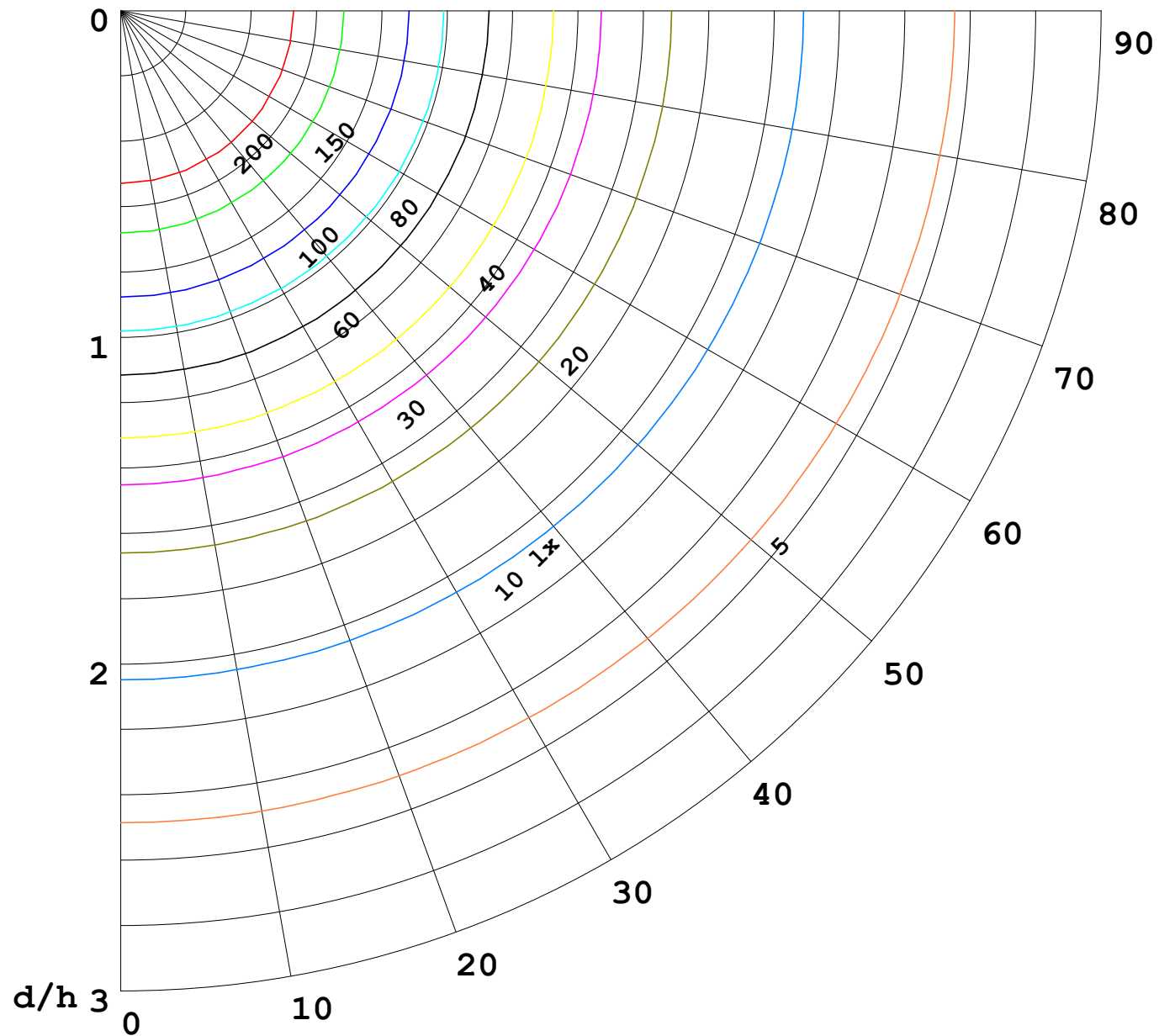
γ Range: 0 - 180DEG
γ Interval: 1.0DEG
Test System:EVERFINE GO-2000B_V1 SYSTEM V2.00.488
Humidity:65.0%
Test Distance:6.360m [K=1.0000]
Remarks:

I (cd)



1000 lm

$\kappa = 1$



F = 1000 lm
 K = 0.7
 Hcc = 0.8 m
 Hfc = 0.0 m
 Eave = 100 lx

| | Pcc | Pw | Pfc |
|------|-----|----|-----|
| ———— | 70 | 50 | 30 |
| ———— | 50 | 30 | 20 |

