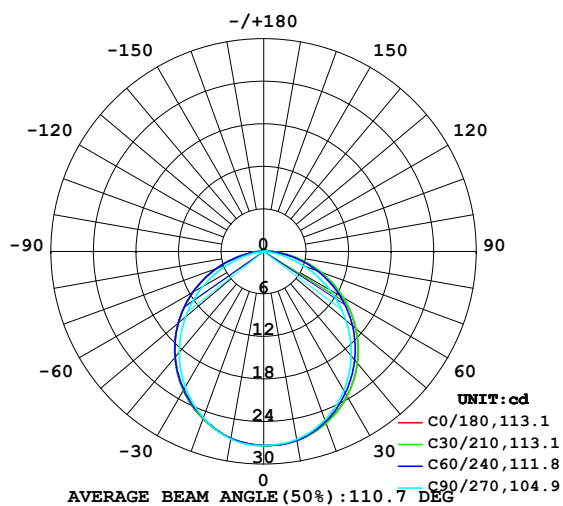


## LUMINAIRE PHOTOMETRIC TEST REPORT

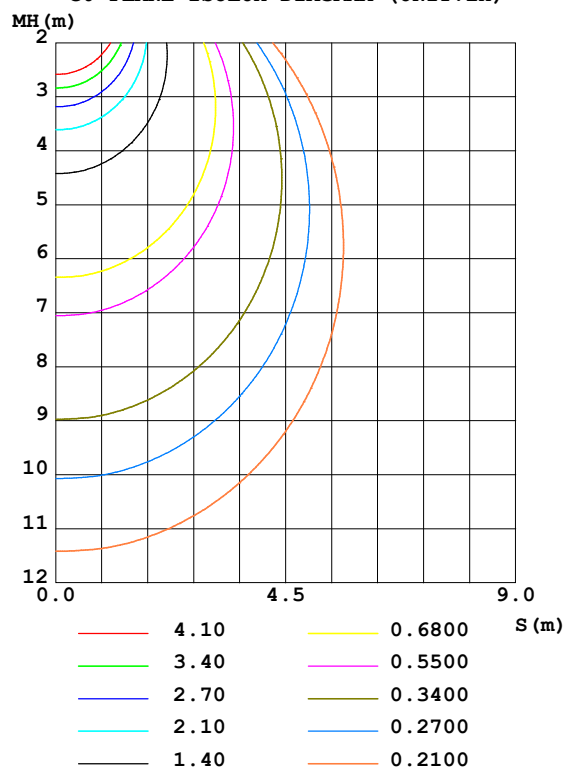
Test:U:24.00V I:0.1906A P:4.574W PF:1.000 Freq:50.00Hz Lamp Flux:78.549x1 lm		
NAME: SF15-24V-5050-56-DMX4SM-RGBW(4000)-G	TYPE: 硅胶	WEIGHT:
SPEC.:	DIM.: 21mm*11.5mm	SERIAL No.:2021123017
MFR.: OLYMPIA	SUR.:1*0.0115	Shielding Angle:

DATA OF LAMP		PHOTOMETRIC DATA Eff: 17.17 lm/W			
MODEL	5050	I <sub>max</sub> (cd)	27.40	S/MH(C0/180)	1.24
NOMINAL POWER(W)	3.75	LOR(%)	100.0	S/MH(C90/270)	1.21
RATED VOLTAGE(V)	24	TOTAL FLUX(lm)	78.549	η UP,DN(C0-180)	0.7,50.1
NOMINAL FLUX(lm)	78.549	CIE CLASS	DIRECT	η UP,DN(C180-360)	0.5,48.6
LAMPS INSIDE	1	η up(%)	1.3	CIBSE SHR NOM	1.25
TEST VOLTAGE(V)	24	η down(%)	98.7	CIBSE SHR MAX	1.35

LUMINOUS INTENSITY DISTRIBUTION DIAGRAM



C0 PLANE ISOLUX DIAGRAM (UNIT:lx)



C Range: 0 - 360DEG  
 C Interval: 30.0DEG  
 Test Speed: HIGH  
 Temperature: 25.3DEG  
 Operators: LPC  
 Test Date: 2021-12-30

γ Range: 0 - 120DEG  
 γ Interval: 1.0DEG  
 Test System: EVERFINE GO-2000B\_V1 SYSTEM V2.0.362  
 Humidity: 65.0%  
 Test Distance: 9.200m [K=1.0000]  
 Remarks:

## ZONAL FLUX DIAGRAM

ZONAL FLUX DIAGRAM:

$\gamma$	C0	C45	C90	C135	C180	C225	C270	C315	$\gamma$	$\Phi$ zone	$\Phi$ total	%lum, lamp
10	27.08	27.06	26.92	26.78	26.73	26.76	26.85	27.03	0- 10	2.592	2.592	3.3,3.3
20	25.74	25.66	25.28	25.17	25.13	25.06	24.98	25.43	10- 20	7.400	9.992	12.7,12.7
30	23.53	23.32	22.66	22.71	22.68	22.59	22.11	22.99	20- 30	11.14	21.13	26.9,26.9
40	20.56	20.26	19.21	19.56	19.52	19.46	18.54	20.01	30- 40	13.35	34.49	43.9,43.9
50	16.98	16.69	15.15	15.81	15.75	15.72	14.42	16.55	40- 50	13.81	48.30	61.5,61.5
60	12.91	12.65	10.70	11.61	11.54	11.54	9.915	12.53	50- 60	12.46	60.75	77.3,77.3
70	8.573	8.345	6.072	7.147	7.092	7.088	5.291	8.269	60- 70	9.511	70.27	89.5,89.5
80	4.246	4.023	1.781	2.943	2.967	2.862	1.254	3.957	70- 80	5.509	75.77	96.5,96.5
90	1.168	0.8921	0.2320	0.5855	0.5818	0.4450	0.0854	0.7868	80- 90	1.788	77.56	98.7,98.7
100	0.3121	0.3772	0.2565	0.4313	0.3075	0.2767	0.1154	0.2460	90-100	0.4221	77.98	99.3,99.3
110	0.1635	0.3693	0.3046	0.4053	0.2894	0.2188	0.1420	0.2383	100-110	0.3071	78.29	99.7,99.7
120	0.0149	0.2079	0.1072	0.2790	0.2714	0.0564	0.2111	0.1757	110-120	0.2477	78.54	100,100
130	0	0	0	0	0	0	0	0	120-130	0.0097	78.55	100,100
140	0	0	0	0	0	0	0	0	130-140	0	78.55	100,100
150	0	0	0	0	0	0	0	0	140-150	0	78.55	100,100
160	0	0	0	0	0	0	0	0	150-160	0	78.55	100,100
170	0	0	0	0	0	0	0	0	160-170	0	78.55	100,100
180	0	0	0	0	0	0	0	0	170-180	0	78.55	100,100
DEG	LUMINOUS INTENSITY:cd									UNIT:lm		

Conical surface Flux(90deg): 41.451 lm

%lum = 52.8%

%lamp = 52.8%

Conical surface Flux(120deg): 60.755 lm

%lum = 77.3%

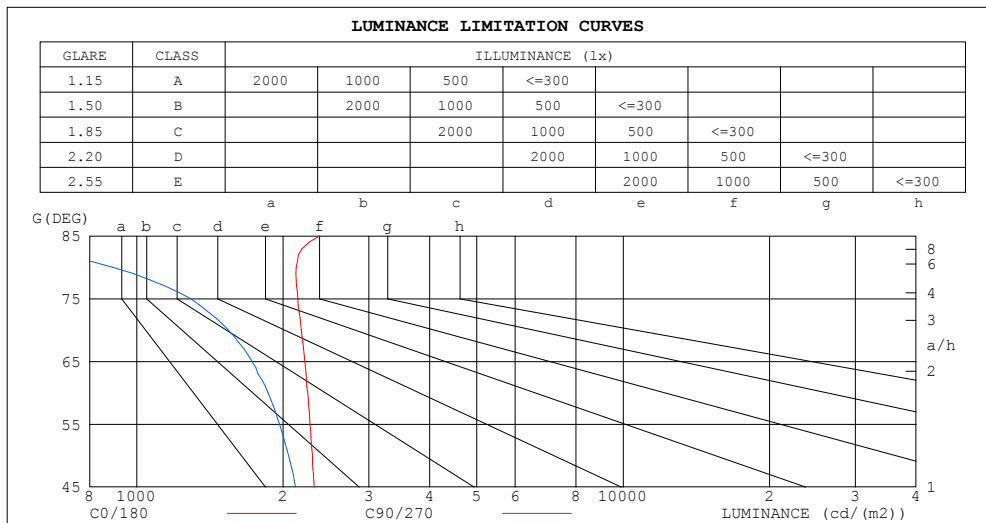
%lamp = 77.3%

C Range: 0 - 360DEG  
 C Interval: 30.0DEG  
 Test Speed: HIGH  
 Temperature:25.3DEG  
 Operators:LPC  
 Test Date:2021-12-30

$\gamma$  Range: 0 - 120DEG  
 $\gamma$  Interval: 1.0DEG  
 Test System:EVERFINE GO-2000B\_V1 SYSTEM V2.0.362  
 Humidity:65.0%  
 Test Distance:9.200m [K=1.0000]  
 Remarks:

## LUMINANCE LIMITATION CURVES

Test:U:24.00V I:0.1906A P:4.574W PF:1.000 Freq:50.00Hz Lamp Flux:78.549x1 lm		
NAME: SF15-24V-5050-56-DMX4SM-RGBW(4000)-G	TYPE: 硅胶	WEIGHT:
SPEC.:	DIM.: 21mm*11.5mm	SERIAL No.:2021123017
MFR.: OLYMPIA	SUR.:1*0.0115	Shielding Angle:



LUMINANCE cd/(m2)		
G (DEG)	C0/180	C90/270
85	2376	310
80	2126	892
75	2144	1290
70	2180	1544
65	2216	1727
60	2245	1861
55	2272	1965
50	2297	2050
45	2316	2120

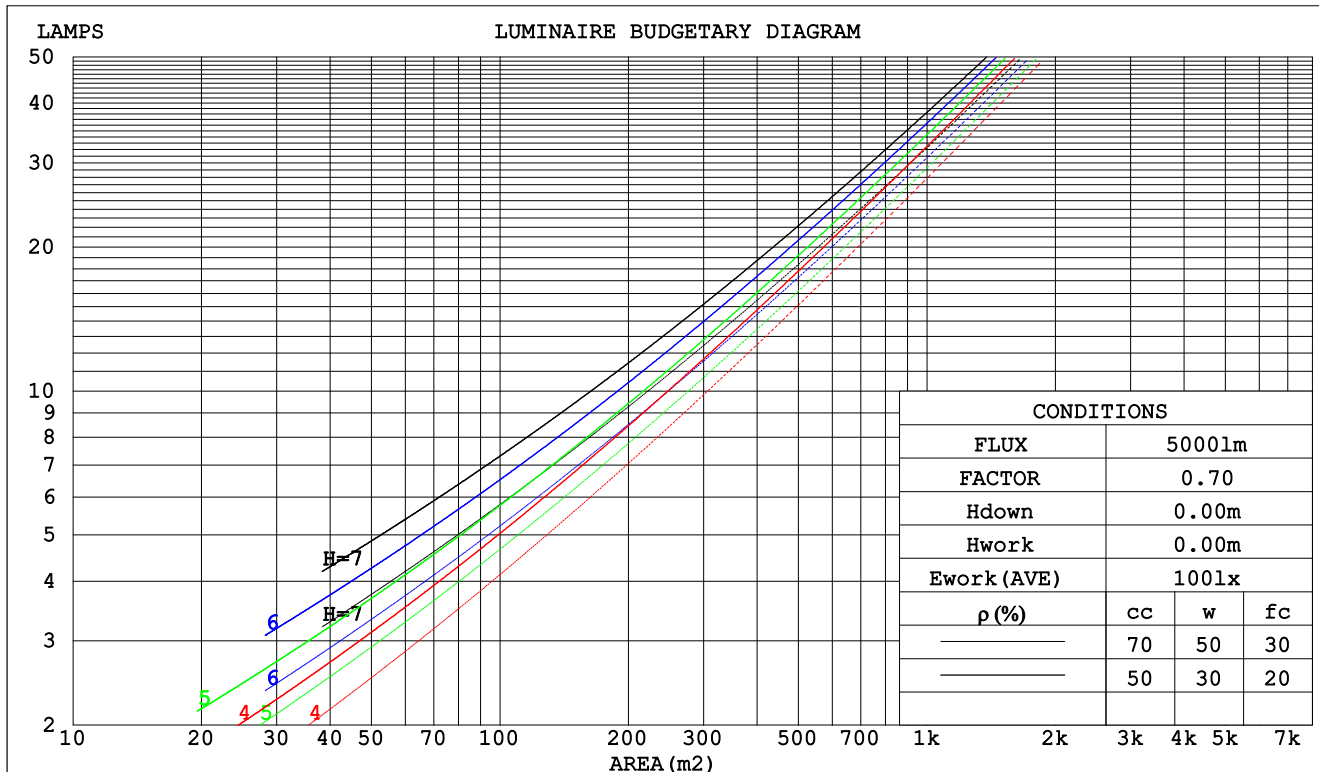
C Range: 0 - 360DEG  
C Interval: 30.0DEG  
Test Speed: HIGH  
Temperature:25.3DEG  
Operators:LPC  
Test Date:2021-12-30

$\gamma$  Range: 0 - 120DEG  
 $\gamma$  Interval: 1.0DEG  
Test System:EVERFINE GO-2000B\_V1 SYSTEM V2.0.362  
Humidity:65.0%  
Test Distance:9.200m [K=1.0000]  
Remarks:

## CU AND LUMINAIRE BUDGETARY ESTIMATE DIAGRAM

Test:U:24.00V I:0.1906A P:4.574W PF:1.000 Freq:50.00Hz Lamp Flux:78.549x1 lm		
NAME: SF15-24V-5050-56-DMX4SM-RGBW(4000)-G	TYPE: 硅胶	WEIGHT:
SPEC.:	DIM.: 21mm*11.5mm	SERIAL No.:2021123017
MFR.: OLYMPIA	SUR.:1*0.0115	Shielding Angle:

pcc	80%			70%			50%			30%			10%			0
pw	50%	30%	10%	50%	30%	10%	50%	30%	10%	50%	30%	10%	50%	30%	10%	0
pfc	20%			20%			20%			20%			20%			0
RCR	Coefficients of Utilization(CU)															
	RCR:Room Cavity Ratio															
0.0	1.19	1.19	1.19	1.16	1.16	1.16	1.10	1.10	1.10	1.05	1.05	1.05	1.01	1.01	1.01	.99
1.0	1.03	.99	.95	1.01	.97	.93	.96	.93	.90	.92	.90	.87	.89	.86	.84	.82
2.0	.90	.83	.77	.88	.82	.76	.84	.79	.74	.81	.76	.72	.78	.74	.71	.68
3.0	.79	.71	.64	.77	.70	.63	.74	.68	.62	.71	.66	.61	.68	.64	.60	.57
4.0	.70	.61	.54	.68	.60	.54	.66	.59	.53	.63	.57	.52	.61	.56	.51	.49
5.0	.62	.53	.47	.61	.53	.46	.59	.51	.46	.57	.50	.45	.55	.49	.45	.42
6.0	.56	.47	.41	.55	.47	.40	.53	.46	.40	.51	.45	.40	.50	.44	.39	.37
7.0	.51	.42	.36	.50	.42	.36	.48	.41	.35	.47	.40	.35	.45	.39	.35	.33
8.0	.46	.38	.32	.46	.38	.32	.44	.37	.32	.43	.36	.31	.42	.36	.31	.29
9.0	.43	.34	.29	.42	.34	.29	.41	.34	.28	.40	.33	.28	.38	.32	.28	.26
10.0	.39	.31	.26	.39	.31	.26	.38	.31	.26	.37	.30	.26	.36	.30	.25	.24



C Range: 0 - 360DEG  
 C Interval: 30.0DEG  
 Test Speed: HIGH  
 Temperature:25.3DEG  
 Operators:LPC  
 Test Date:2021-12-30

$\gamma$  Range: 0 - 120DEG  
 $\gamma$  Interval: 1.0DEG  
 Test System:EVERFINE GO-2000B\_V1 SYSTEM V2.0.362  
 Humidity:65.0%  
 Test Distance:9.200m [K=1.0000]  
 Remarks:

## WEC AND CCEC

Test:U:24.00V I:0.1906A P:4.574W PF:1.000 Freq:50.00Hz Lamp Flux:78.549x1 lm		
NAME: SF15-24V-5050-56-DMX4SM-RGBW(4000)-G	TYPE: 硅胶	WEIGHT:
SPEC.:	DIM.: 21mm*11.5mm	SERIAL No.:2021123017
MFR.: OLYMPIA	SUR.:1*0.0115	Shielding Angle:

pcc	80%			70%			50%			30%			10%			0	
pw	50%	30%	10%	50%	30%	10%	50%	30%	10%	50%	30%	10%	50%	30%	10%	0	
pfc	20%			20%			20%			20%			20%			0	
RCR	RCR:Room Cavity Ratio						Wall Exitance Coeffcients (WEC)										
0.0																	
1.0	.314	.178	.056	.306	.175	.055	.292	.168	.054	.279	.161	.052	.267	.155	.050		
2.0	.293	.161	.049	.287	.158	.049	.274	.153	.047	.263	.147	.046	.252	.143	.045		
3.0	.271	.144	.043	.265	.142	.043	.254	.138	.042	.244	.134	.041	.234	.130	.040		
4.0	.249	.130	.038	.244	.128	.038	.235	.124	.037	.225	.121	.037	.217	.118	.036		
5.0	.230	.117	.034	.226	.116	.034	.217	.113	.033	.209	.110	.033	.201	.108	.032		
6.0	.214	.107	.031	.209	.106	.030	.202	.103	.030	.194	.101	.030	.188	.099	.029		
7.0	.199	.098	.028	.195	.097	.028	.188	.095	.027	.182	.093	.027	.175	.091	.027		
8.0	.186	.091	.025	.182	.090	.025	.176	.088	.025	.170	.086	.025	.165	.085	.025		
9.0	.174	.084	.023	.171	.083	.023	.165	.082	.023	.160	.080	.023	.155	.079	.023		
10.0	.163	.078	.022	.161	.078	.022	.156	.076	.021	.151	.075	.021	.146	.074	.021		

pcc	80%			70%			50%			30%			10%			0
pw	50%	30%	10%	50%	30%	10%	50%	30%	10%	50%	30%	10%	50%	30%	10%	0
pfc	20%			20%			20%			20%			20%			0
RCR	RCR:Room Cavity Ratio						Ceiling Cavity Exitance Coefficients(CCEC)									
0.0	.200	.200	.200	.171	.171	.171	.117	.117	.117	.067	.067	.067	.021	.021	.021	
1.0	.190	.166	.144	.163	.142	.124	.111	.098	.086	.064	.057	.050	.021	.018	.016	
2.0	.182	.142	.108	.156	.122	.093	.107	.084	.065	.062	.049	.038	.020	.016	.012	
3.0	.174	.124	.084	.149	.107	.073	.103	.074	.051	.059	.043	.030	.019	.014	.010	
4.0	.167	.111	.068	.143	.096	.059	.098	.067	.042	.057	.039	.025	.018	.013	.008	
5.0	.159	.100	.057	.137	.087	.050	.094	.061	.035	.055	.036	.021	.018	.012	.007	
6.0	.152	.092	.049	.131	.080	.043	.090	.056	.030	.052	.033	.018	.017	.011	.006	
7.0	.145	.085	.043	.125	.074	.038	.086	.052	.027	.050	.031	.016	.016	.010	.005	
8.0	.139	.079	.039	.119	.069	.034	.083	.048	.024	.048	.029	.014	.016	.009	.005	
9.0	.133	.074	.035	.114	.065	.031	.079	.045	.022	.046	.027	.013	.015	.009	.004	
10.0	.127	.070	.032	.109	.061	.028	.076	.043	.020	.044	.025	.012	.014	.008	.004	

C Range: 0 - 360DEG  
 C Interval: 30.0DEG  
 Test Speed: HIGH  
 Temperature:25.3DEG  
 Operators:LPC  
 Test Date:2021-12-30

γ Range: 0 - 120DEG  
 γ Interval: 1.0DEG  
 Test System:EVERFINE GO-2000B\_V1 SYSTEM V2.0.362  
 Humidity:65.0%  
 Test Distance:9.200m [K=1.0000]  
 Remarks:

UGR(Unified Glare Rating) Table

Test:U:24.00V I:0.1906A P:4.574W PF:1.000 Freq:50.00Hz Lamp Flux:78.549x1 lm										
NAME: SF15-24V-5050-56-DMX4SM-RGBW(4000)-G					TYPE: 硅胶			WEIGHT:		
SPEC.:					DIM.: 21mm*11.5mm			SERIAL No.:2021123017		
MFR.: OLYMPIA					SUR.:1*0.0115			Shielding Angle:		
ceiling/cavity	0.7	0.7	0.5	0.5	0.3	0.7	0.7	0.5	0.5	0.3
walls	0.5	0.3	0.5	0.3	0.3	0.5	0.3	0.5	0.3	0.3
working plane	0.2	0.2	0.2	0.2	0.2	0.2	0.2	0.2	0.2	0.2
Room dimensions	Viewed crosswise					Viewed endwise				
x = 2H y = 2H	24.8	26.3	25.0	26.5	26.7	24.2	25.7	24.4	25.9	26.1
3H	26.4	27.8	26.8	28.1	28.4	25.5	26.9	25.8	27.2	27.4
4H	27.2	28.5	27.5	28.8	29.1	26.0	27.3	26.3	27.6	27.9
6H	27.8	29.0	28.1	29.3	29.6	26.2	27.5	26.6	27.8	28.1
8H	28.0	29.2	28.4	29.5	29.8	26.2	27.4	26.6	27.8	28.1
12H	28.2	29.4	28.6	29.7	30.0	26.2	27.4	26.6	27.7	28.0
4H 2H	25.4	26.7	25.7	27.0	27.3	24.9	26.3	25.3	26.5	26.8
3H	27.3	28.4	27.6	28.8	29.1	26.5	27.7	26.9	28.0	28.4
4H	28.2	29.2	28.6	29.6	29.9	27.2	28.2	27.6	28.6	28.9
6H	28.9	29.9	29.3	30.2	30.6	27.6	28.5	28.0	28.9	29.3
8H	29.2	30.1	29.6	30.5	30.9	27.6	28.5	28.1	28.9	29.3
12H	29.5	30.3	29.9	30.7	31.1	27.6	28.4	28.1	28.9	29.3
8H 4H	28.5	29.3	28.9	29.7	30.1	27.6	28.5	28.0	28.9	29.3
6H	29.4	30.1	29.9	30.6	31.0	28.2	28.9	28.7	29.4	29.8
8H	29.8	30.5	30.3	30.9	31.4	28.4	29.1	28.9	29.5	30.0
12H	30.2	30.8	30.7	31.2	31.8	28.5	29.0	29.0	29.5	30.0
12H 4H	28.5	29.3	28.9	29.7	30.1	27.7	28.5	28.1	28.9	29.3
6H	29.5	30.1	30.0	30.6	31.0	28.4	29.0	28.8	29.4	29.9
8H	30.0	30.5	30.5	31.0	31.5	28.6	29.2	29.1	29.6	30.1
Variations with the observer position at spacings:										
S = 1.0H	+ 0.1 / - 0.2					+ 0.2 / - 0.2				
1.5H	+ 0.2 / - 0.3					+ 0.2 / - 0.4				
2.0H	+ 0.1 / - 0.3					+ 0.2 / - 0.5				

CIE Pub.117, 78.55 lm Total Lamp Luminous Flux Correct (8log(F/F0) = -8.8)

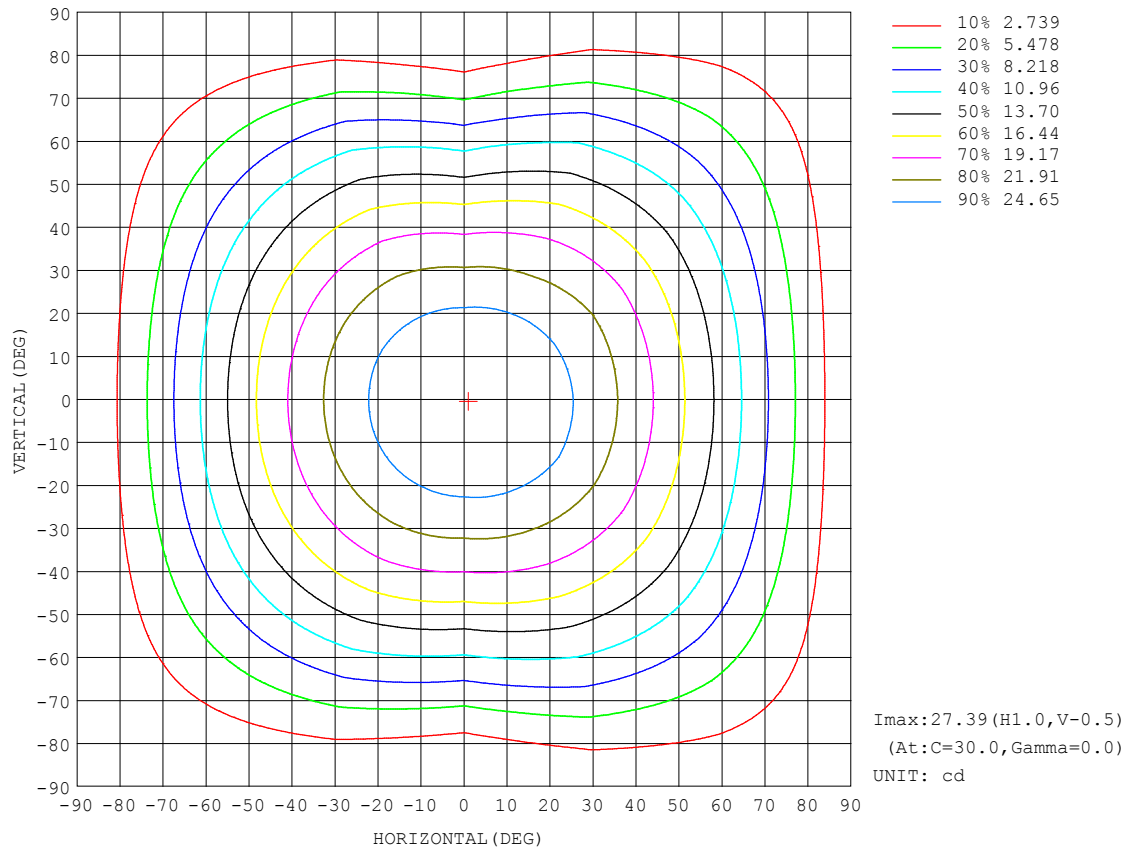
C Range: 0 - 360DEG  
 C Interval: 30.0DEG  
 Test Speed: HIGH  
 Temperature:25.3DEG  
 Operators:LPC  
 Test Date:2021-12-30

γ Range: 0 - 120DEG  
 γ Interval: 1.0DEG  
 Test System:EVERFINE GO-2000B\_V1 SYSTEM V2.0.362  
 Humidity:65.0%  
 Test Distance:9.200m [K=1.0000]  
 Remarks:



## ISOCANDELA DIAGRAM

Test:U:24.00V I:0.1906A P:4.574W PF:1.000 Freq:50.00Hz Lamp Flux:78.549x1 lm		
NAME: SF15-24V-5050-56-DMX4SM-RGBW(4000)-G	TYPE: 硅胶	WEIGHT:
SPEC.:	DIM.: 21mm*11.5mm	SERIAL No.:2021123017
MFR.: OLYMPIA	SUR.:1*0.0115	Shielding Angle:



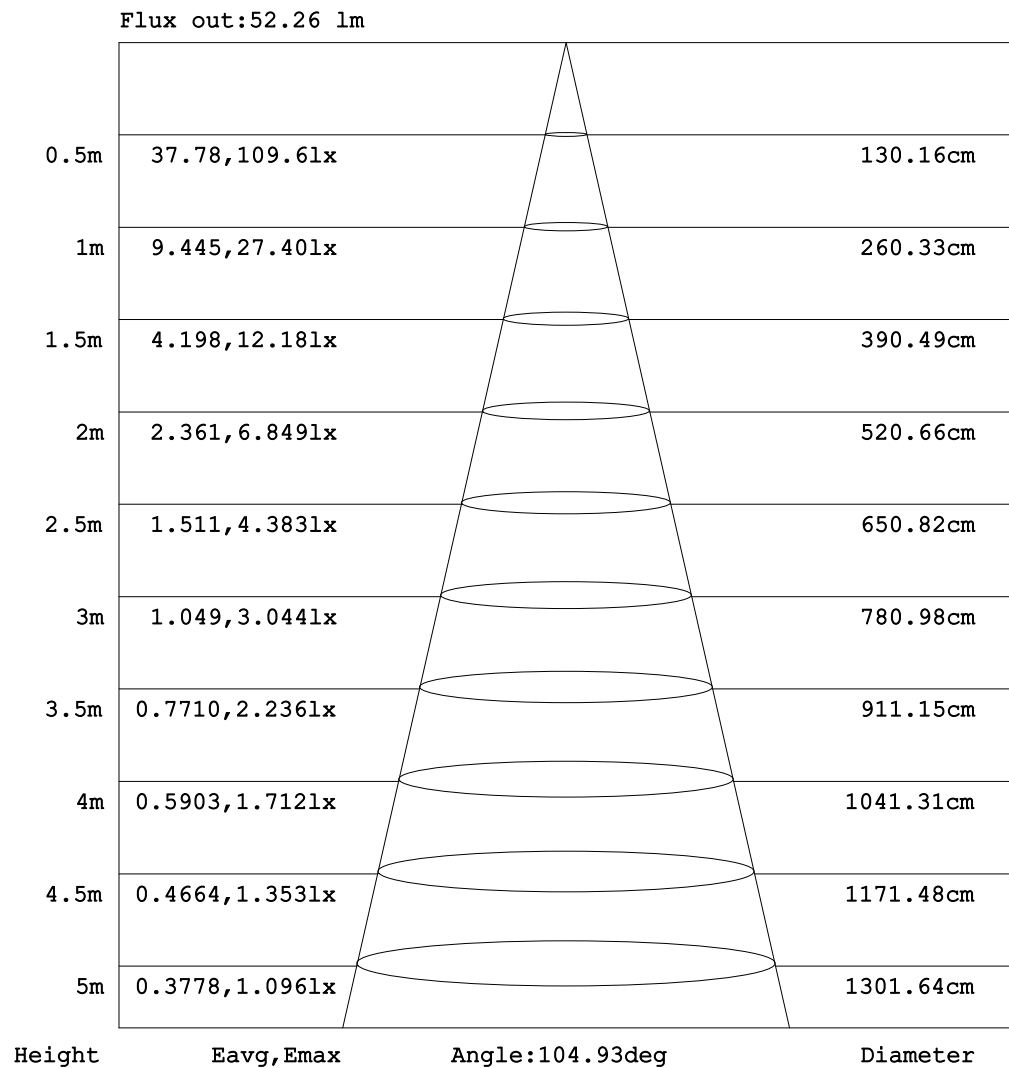
C Range: 0 - 360DEG  
C Interval: 30.0DEG  
Test Speed: HIGH  
Temperature:25.3DEG  
Operators:LPC  
Test Date:2021-12-30

$\gamma$  Range: 0 - 120DEG  
 $\gamma$  Interval: 1.0DEG  
Test System:EVERFINE GO-2000B\_V1 SYSTEM V2.0.362  
Humidity:65.0%  
Test Distance:9.200m [K=1.0000]  
Remarks:



## AAI Figure

Test:U:24.00V I:0.1906A P:4.574W PF:1.000 Freq:50.00Hz Lamp Flux:78.549x1 lm		
NAME: SF15-24V-5050-56-DMX4SM-RGBW(4000)-G	TYPE: 硅胶	WEIGHT:
SPEC.:	DIM.: 21mm*11.5mm	SERIAL No.:2021123017
MFR.: OLYMPIA	SUR.:1*0.0115	Shielding Angle:



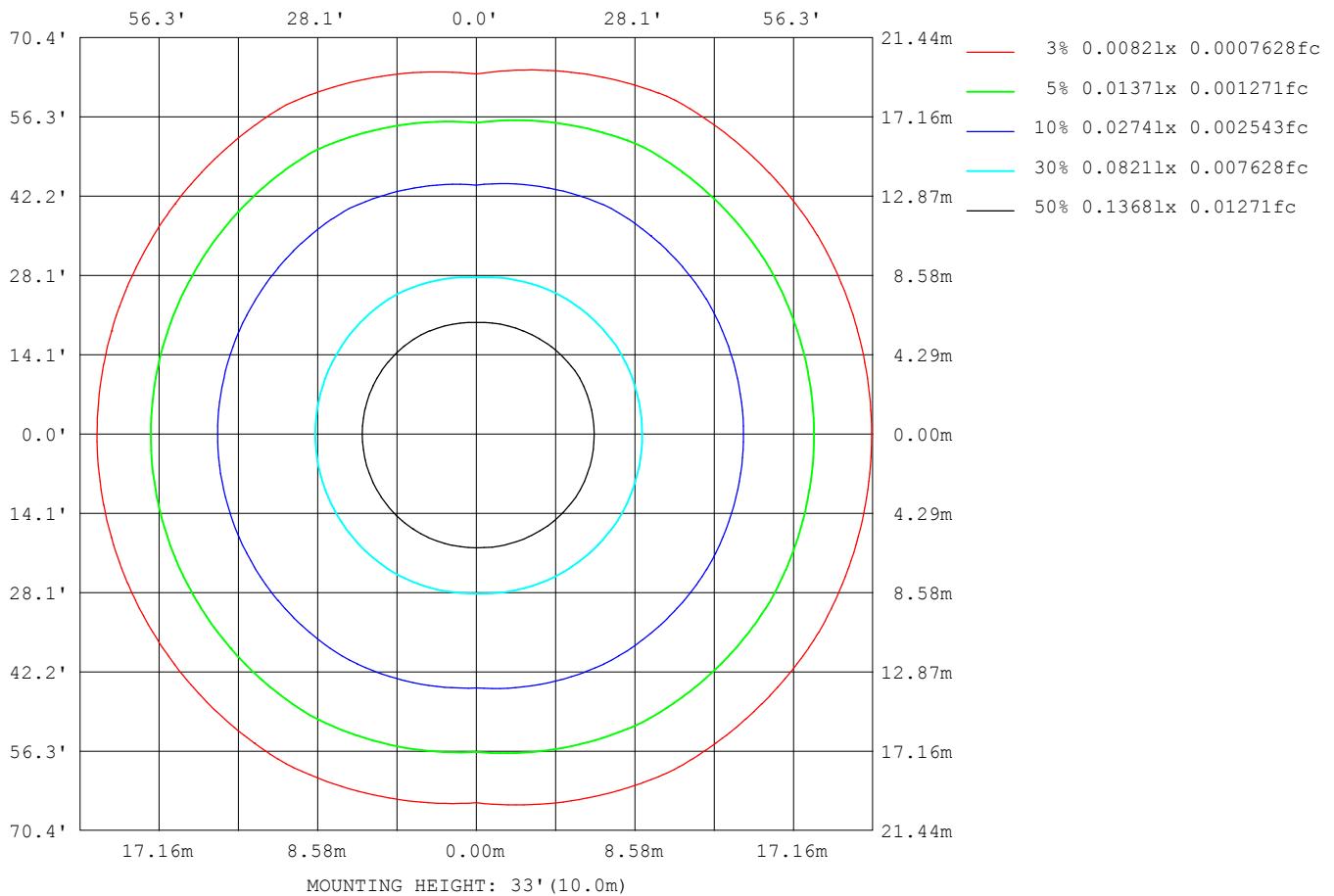
Note: The Curves indicate the illuminated area and the average illumination when the luminaire is at different distance.

C Range: 0 - 360DEG  
 C Interval: 30.0DEG  
 Test Speed: HIGH  
 Temperature: 25.3DEG  
 Operators: LPC  
 Test Date: 2021-12-30

γ Range: 0 - 120DEG  
 γ Interval: 1.0DEG  
 Test System: EVERFINE GO-2000B\_V1 SYSTEM V2.0.362  
 Humidity: 65.0%  
 Test Distance: 9.200m [K=1.0000]  
 Remarks:

## ISOLUX DIAGRAM

Test:U:24.00V I:0.1906A P:4.574W PF:1.000 Freq:50.00Hz Lamp Flux:78.549x1 lm		
NAME: SF15-24V-5050-56-DMX4SM-RGBW(4000)-G	TYPE: 硅胶	WEIGHT:
SPEC.:	DIM.: 21mm*11.5mm	SERIAL No.:2021123017
MFR.: OLYMPIA	SUR.:1*0.0115	Shielding Angle:



C Range: 0 - 360DEG  
C Interval: 30.0DEG  
Test Speed: HIGH  
Temperature: 25.3DEG  
Operators: LPC  
Test Date: 2021-12-30

$\gamma$  Range: 0 - 120DEG  
 $\gamma$  Interval: 1.0DEG  
Test System: EVERFINE GO-2000B\_V1 SYSTEM V2.0.362  
Humidity: 65.0%  
Test Distance: 9.200m [K=1.0000]  
Remarks:

## LED Avg.L Report

Test:U:24.00V I:0.1906A P:4.574W PF:1.000 Freq:50.00Hz Lamp Flux:78.549x1 lm		
NAME: SF15-24V-5050-56-DMX4SM-RGBW(4000)-G	TYPE:硅胶	WEIGHT:
SPEC.:	DIM.: 21mm*11.5mm	SERIAL No.:2021123017
MFR.: OLYMPIA	SUR.:1*0.0115	Shielding Angle:

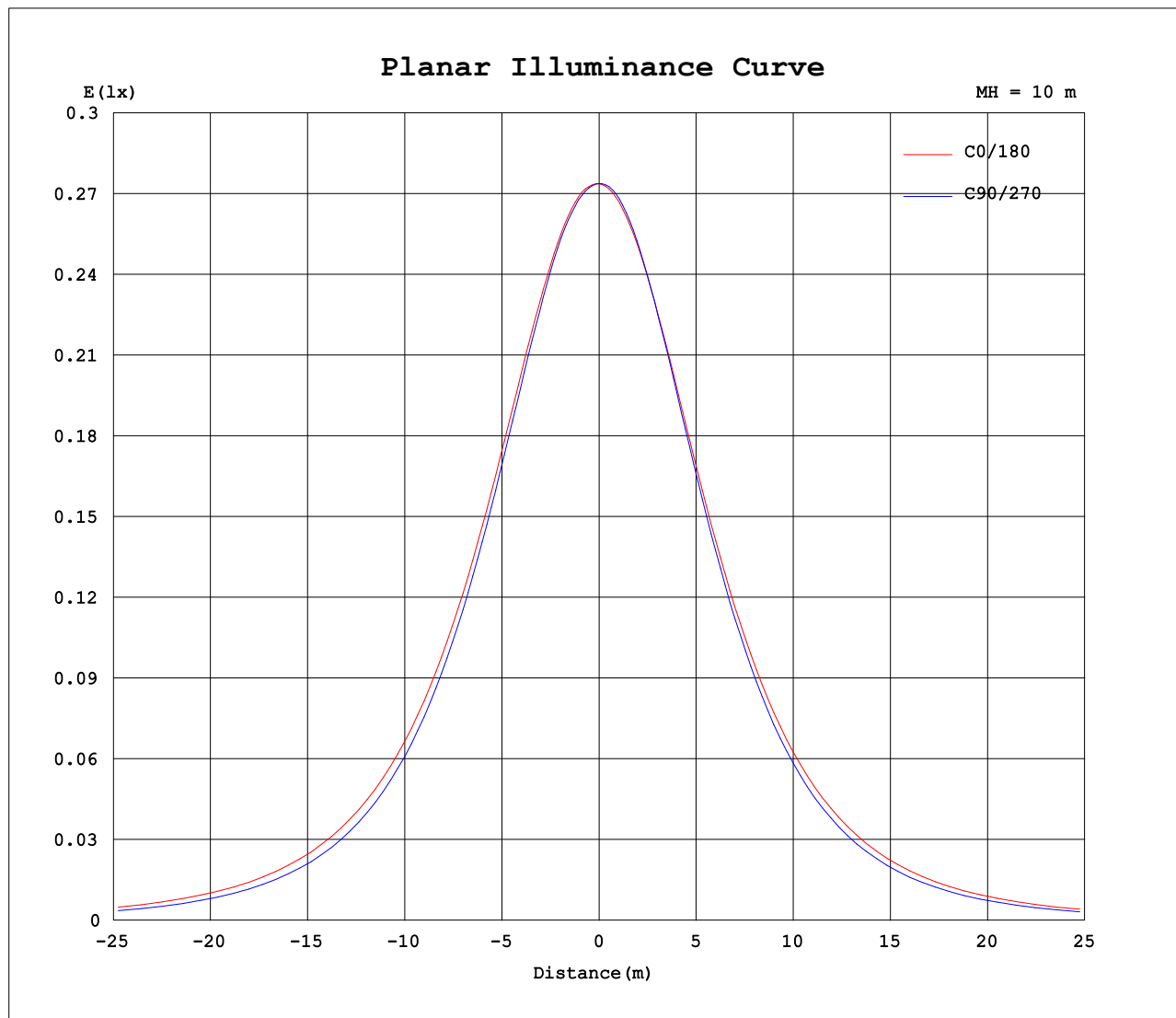
AvgL	cd/m2
L_0~180(65)av	2067
L_0~180(75)av	1897
L_0~180(85)av	1934
L_90~270(65)av	1642
L_90~270(75)av	1172
L_90~270(85)av	236
L_45(65)av	2065
L_45(75)av	1896
L_45(85)av	1787

Standard: GB/T 29293-2012

C Range: 0 - 360DEG  
 C Interval: 30.0DEG  
 Test Speed: HIGH  
 Temperature:25.3DEG  
 Operators:LPC  
 Test Date:2021-12-30

γ Range: 0 - 120DEG  
 γ Interval: 1.0DEG  
 Test System:EVERFINE GO-2000B\_V1 SYSTEM V2.0.362  
 Humidity:65.0%  
 Test Distance:9.200m [K=1.0000]  
 Remarks:

## Planar Illuminance Curve



C Range: 0 - 360DEG  
C Interval: 30.0DEG  
Test Speed: HIGH  
Temperature: 25.3DEG  
Operators: LPC  
Test Date: 2021-12-30

$\gamma$  Range: 0 - 120DEG  
 $\gamma$  Interval: 1.0DEG  
Test System: EVERFINE GO-2000B\_V1 SYSTEM V2.0.362  
Humidity: 65.0%  
Test Distance: 9.200m [K=1.0000]  
Remarks:

## LUMINOUS DISTRIBUTION INTENSITY DATA

Test:U:24.00V I:0.1906A P:4.574W PF:1.000 Freq:50.00Hz Lamp Flux:78.549x1 lm		
NAME: SF15-24V-5050-56-DMX4SM-RGBW(4000)-G	TYPE: 硅胶	WEIGHT:
SPEC.:	DIM.: 21mm*11.5mm	SERIAL No.:2021123017
MFR.: OLYMPIA	SUR.:1*0.0115	Shielding Angle:

Table--1

UNIT: cd

C (DEG) γ (DEG)	0	30	60	90	120	150	180	210	240	270	300	330						
0	27.4	27.4	27.4	27.4	27.4	27.4	27.4	27.4	27.4	27.4	27.4	27.4						
5	27.4	27.3	27.4	27.3	27.3	27.2	27.2	27.2	27.2	27.3	27.3	27.4						
10	27.1	27.1	27.0	26.9	26.8	26.7	26.7	26.8	26.8	26.9	27.0	27.1						
15	26.5	26.6	26.4	26.2	26.1	26.0	26.0	26.0	26.0	26.1	26.2	26.5						
20	25.7	25.8	25.5	25.3	25.2	25.1	25.1	25.1	25.0	25.0	25.3	25.6						
25	24.7	24.8	24.4	24.1	24.1	24.0	24.0	24.0	23.9	23.7	24.1	24.5						
30	23.5	23.6	23.1	22.7	22.7	22.7	22.7	22.6	22.5	22.1	22.6	23.4						
35	22.1	22.1	21.6	21.0	21.2	21.2	21.2	21.2	21.1	20.4	21.1	22.0						
40	20.6	20.6	20.0	19.2	19.6	19.5	19.5	19.5	19.4	18.5	19.6	20.4						
45	18.8	18.8	18.2	17.2	17.8	17.7	17.7	17.7	17.6	16.5	18.0	18.7						
50	17.0	17.0	16.4	15.2	15.9	15.8	15.7	15.7	15.7	14.4	16.2	16.9						
55	15.0	15.0	14.4	13.0	13.8	13.7	13.7	13.6	13.7	12.2	14.3	14.9						
60	12.9	13.0	12.4	10.7	11.7	11.5	11.5	11.5	11.6	9.91	12.2	12.8						
65	10.8	10.8	10.2	8.39	9.46	9.32	9.32	9.27	9.40	7.57	10.1	10.7						
70	8.57	8.61	8.08	6.07	7.22	7.08	7.09	7.01	7.16	5.29	7.99	8.55						
75	6.38	6.41	5.90	3.84	5.01	4.91	4.91	4.84	4.94	3.14	5.82	6.36						
80	4.25	4.26	3.78	1.78	2.95	2.94	2.97	2.86	2.86	1.25	3.71	4.21						
85	2.38	2.33	1.89	0.31	1.32	1.48	1.49	1.40	1.18	0.16	1.79	2.30						
90	1.17	1.07	0.72	0.23	0.54	0.63	0.58	0.54	0.35	0.09	0.55	1.03						
95	0.53	0.47	0.41	0.24	0.46	0.45	0.33	0.32	0.27	0.09	0.27	0.42						
100	0.31	0.36	0.39	0.26	0.43	0.43	0.31	0.29	0.26	0.12	0.25	0.24						
105	0.24	0.36	0.35	0.30	0.37	0.43	0.30	0.23	0.26	0.13	0.23	0.24						
110	0.16	0.36	0.37	0.30	0.38	0.43	0.29	0.16	0.28	0.14	0.23	0.25						
115	0.09	0.37	0.29	0.32	0.40	0.42	0.28	0.09	0.30	0.15	0.23	0.25						
120	0.01	0.37	0.05	0.11	0.42	0.14	0.27	0.03	0.09	0.21	0.06	0.29						
125	0.00	0.00	0.00	0.00	0.00	0.00	0.00	0.00	0.00	0.00	0.00	0.00						
130	0.00	0.00	0.00	0.00	0.00	0.00	0.00	0.00	0.00	0.00	0.00	0.00						
135	0.00	0.00	0.00	0.00	0.00	0.00	0.00	0.00	0.00	0.00	0.00	0.00						
140	0.00	0.00	0.00	0.00	0.00	0.00	0.00	0.00	0.00	0.00	0.00	0.00						
145	0.00	0.00	0.00	0.00	0.00	0.00	0.00	0.00	0.00	0.00	0.00	0.00						
150	0.00	0.00	0.00	0.00	0.00	0.00	0.00	0.00	0.00	0.00	0.00	0.00						
155	0.00	0.00	0.00	0.00	0.00	0.00	0.00	0.00	0.00	0.00	0.00	0.00						
160	0.00	0.00	0.00	0.00	0.00	0.00	0.00	0.00	0.00	0.00	0.00	0.00						
165	0.00	0.00	0.00	0.00	0.00	0.00	0.00	0.00	0.00	0.00	0.00	0.00						
170	0.00	0.00	0.00	0.00	0.00	0.00	0.00	0.00	0.00	0.00	0.00	0.00						
175	0.00	0.00	0.00	0.00	0.00	0.00	0.00	0.00	0.00	0.00	0.00	0.00						
180	0.00	0.00	0.00	0.00	0.00	0.00	0.00	0.00	0.00	0.00	0.00	0.00						

C Range: 0 - 360DEG  
C Interval: 30.0DEG  
Test Speed: HIGH  
Temperature:25.3DEG  
Operators:LPC  
Test Date:2021-12-30

γ Range: 0 - 120DEG  
γ Interval: 1.0DEG  
Test System:EVERFINE GO-2000B\_V1 SYSTEM V2.0.362  
Humidity:65.0%  
Test Distance:9.200m [K=1.0000]  
Remarks:

Photometric Data Table [cd]

G/C	0.0	30.0	60.0	90.0	120.0	150.0	180.0	210.0	240.0	270.0
0.0	27.37	27.40	27.36	27.38	27.37	27.37	27.37	27.40	27.36	27.38
3.0	27.38	27.39	27.38	27.32	27.35	27.28	27.28	27.33	27.28	27.37
6.0	27.34	27.31	27.32	27.22	27.20	27.10	27.11	27.15	27.12	27.25
9.0	27.16	27.14	27.12	27.01	26.94	26.83	26.83	26.88	26.88	26.97
12.0	26.89	26.89	26.86	26.69	26.61	26.48	26.48	26.51	26.49	26.55
15.0	26.53	26.55	26.44	26.25	26.14	26.04	26.04	26.04	26.00	26.05
18.0	26.09	26.12	25.93	25.68	25.60	25.53	25.51	25.53	25.42	25.42
21.0	25.56	25.60	25.33	25.05	24.98	24.94	24.92	24.88	24.78	24.72
24.0	24.95	25.02	24.65	24.35	24.30	24.27	24.25	24.23	24.10	23.93
27.0	24.29	24.31	23.90	23.52	23.54	23.53	23.49	23.45	23.34	23.05
30.0	23.53	23.57	23.07	22.66	22.72	22.71	22.68	22.65	22.53	22.11
33.0	22.71	22.72	22.18	21.70	21.86	21.82	21.80	21.77	21.68	21.11
36.0	21.84	21.84	21.26	20.67	20.93	20.87	20.86	20.83	20.75	20.06
39.0	20.89	20.89	20.29	19.58	19.92	19.88	19.85	19.82	19.76	18.91
42.0	19.88	19.89	19.28	18.45	18.88	18.82	18.80	18.76	18.75	17.72
45.0	18.83	18.84	18.23	17.24	17.78	17.71	17.69	17.66	17.64	16.54
48.0	17.72	17.75	17.13	16.03	16.64	16.58	16.55	16.50	16.52	15.23
51.0	16.58	16.61	16.00	14.73	15.46	15.36	15.34	15.29	15.34	13.95
54.0	15.40	15.42	14.82	13.40	14.23	14.12	14.10	14.08	14.13	12.63
57.0	14.17	14.22	13.60	12.07	12.96	12.85	12.83	12.79	12.88	11.25
60.0	12.91	12.95	12.35	10.70	11.68	11.55	11.54	11.50	11.59	9.915
63.0	11.64	11.68	11.10	9.268	10.35	10.21	10.21	10.12	10.28	8.508
66.0	10.33	10.38	9.820	7.932	9.026	8.882	8.881	8.829	8.961	7.096
69.0	9.015	9.052	8.508	6.539	7.659	7.519	7.529	7.472	7.614	5.749
72.0	7.695	7.725	7.202	5.152	6.332	6.192	6.202	6.146	6.272	4.457
75.0	6.382	6.414	5.900	3.841	5.010	4.907	4.911	4.839	4.941	3.135
78.0	5.085	5.102	4.608	2.550	3.733	3.671	3.705	3.602	3.670	1.944
81.0	3.848	3.846	3.381	1.444	2.572	2.585	2.630	2.526	2.484	0.9525
84.0	2.718	2.685	2.236	0.5453	1.587	1.716	1.741	1.631	1.464	0.2079
87.0	1.807	1.722	1.295	0.2793	0.9017	1.059	1.054	0.9719	0.7271	0.1058
90.0	1.168	1.069	0.7152	0.2320	0.5386	0.6325	0.5818	0.5438	0.3461	0.0854
93.0	0.7249	0.6424	0.4629	0.2212	0.4624	0.4523	0.3646	0.3421	0.2725	0.0854
96.0	0.4532	0.4117	0.4121	0.2363	0.4553	0.4522	0.3147	0.3167	0.2672	0.0854
99.0	0.3270	0.3619	0.3972	0.2513	0.4395	0.4357	0.3093	0.3066	0.2619	0.0904
102.0	0.2824	0.3626	0.3822	0.2966	0.4042	0.4334	0.3039	0.2666	0.2566	0.1274
105.0	0.2378	0.3633	0.3530	0.2996	0.3740	0.4312	0.2985	0.2266	0.2568	0.1329
108.0	0.1932	0.3640	0.3613	0.3026	0.3795	0.4289	0.2930	0.1866	0.2678	0.1384
111.0	0.1486	0.3647	0.3804	0.3056	0.3850	0.4266	0.2876	0.1466	0.2835	0.1439
114.0	0.1040	0.3655	0.3430	0.3166	0.3922	0.4244	0.2822	0.1067	0.3015	0.1510
117.0	0.0595	0.3662	0.1960	0.2680	0.4033	0.3524	0.2768	0.0667	0.2155	0.1657
120.0	0.0149	0.3669	0.0490	0.1072	0.4171	0.1410	0.2714	0.0267	0.0862	0.2111
G/C	300.0	330.0								
0.0	27.37	27.37								
3.0	27.34	27.38								
6.0	27.25	27.34								
9.0	27.06	27.18								
12.0	26.69	26.90								
15.0	26.24	26.51								
18.0	25.67	26.01								
21.0	25.03	25.39								
24.0	24.32	24.75								
27.0	23.49	24.11								
30.0	22.61	23.38								
33.0	21.70	22.59								
36.0	20.79	21.70								
39.0	19.89	20.77								
42.0	18.98	19.79								
45.0	18.01	18.74								
48.0	16.94	17.63								
51.0	15.82	16.49								
54.0	14.66	15.35								
57.0	13.46	14.09								
60.0	12.23	12.83								
63.0	10.98	11.57								
66.0	9.706	10.24								
69.0	8.419	8.994								
72.0	7.112	7.614								
75.0	5.821	6.362								
78.0	4.529	5.055								
81.0	3.298	3.813								
84.0	2.142	2.622								
87.0	1.169	1.661								
90.0	0.5466	1.027								

C Range: 0 - 360DEG  
 C Interval: 30.0DEG  
 Test Speed: HIGH  
 Temperature: 25.3DEG  
 Operators: LPC  
 Test Date: 2021-12-30

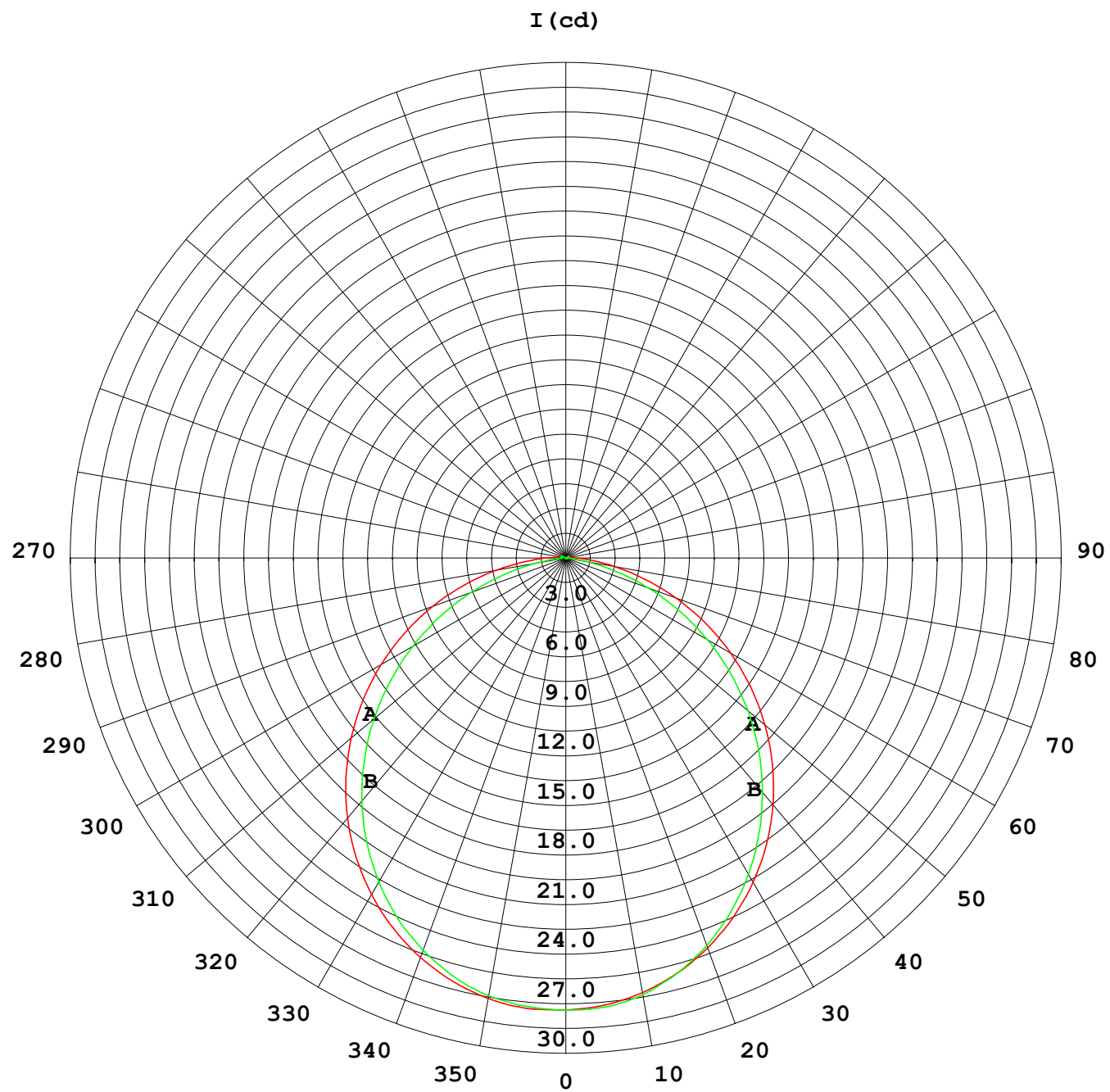
γ Range: 0 - 120DEG  
 γ Interval: 1.0DEG  
 Test System: EVERFINE GO-2000B\_V1 SYSTEM V2.0.362  
 Humidity: 65.0%  
 Test Distance: 9.200m [K=1.0000]  
 Remarks:

## Photometric Data Table [cd]

93.0	0.2759	0.5840
96.0	0.2648	0.3525
99.0	0.2536	0.2415
102.0	0.2424	0.2432
105.0	0.2312	0.2448
108.0	0.2300	0.2464
111.0	0.2287	0.2480
114.0	0.2274	0.2497
117.0	0.1621	0.2647
120.0	0.0649	0.2865

C Range: 0 - 360DEG  
C Interval: 30.0DEG  
Test Speed: HIGH  
Temperature: 25.3DEG  
Operators: LPC  
Test Date: 2021-12-30

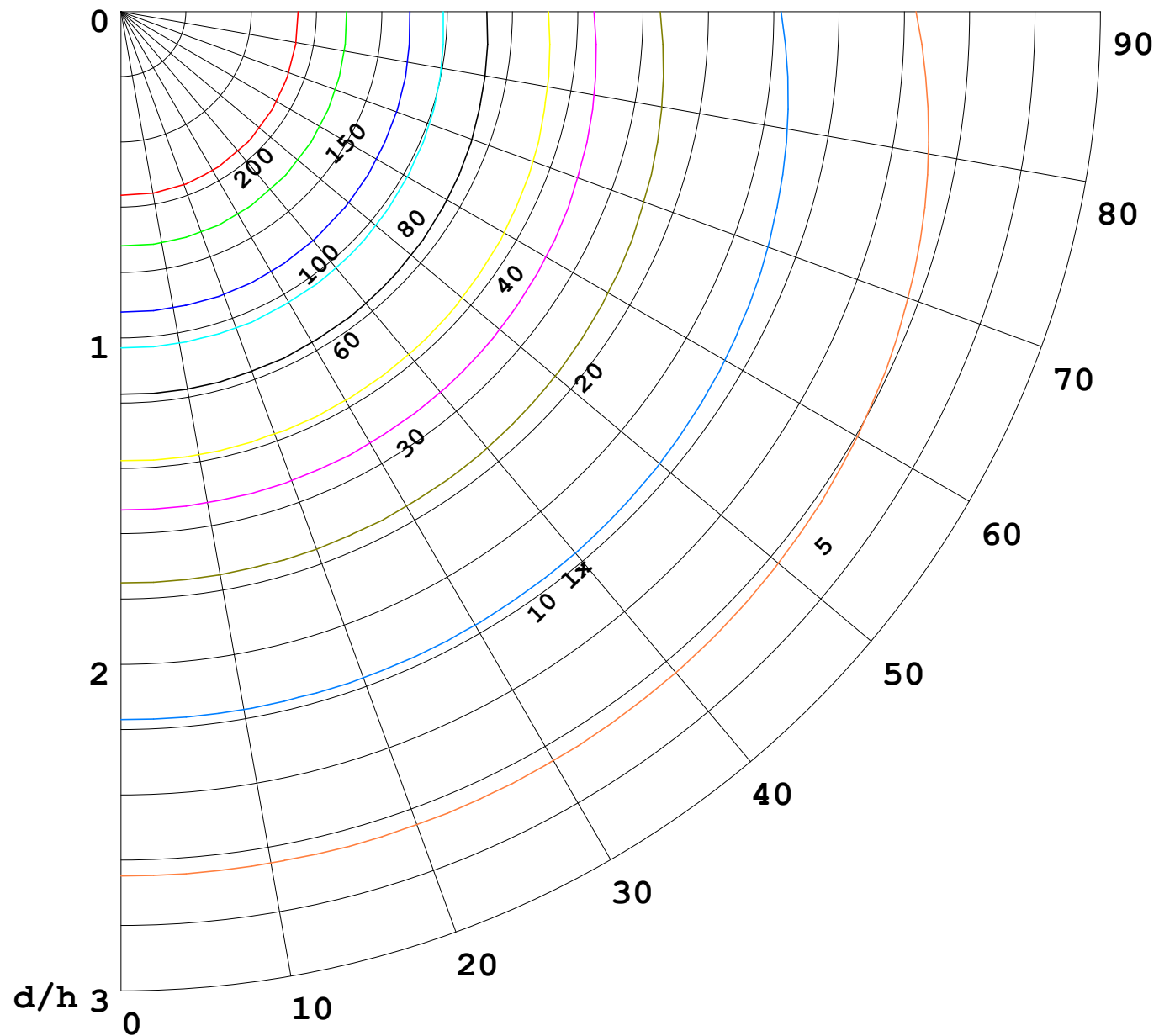
γ Range: 0 - 120DEG  
γ Interval: 1.0DEG  
Test System: EVERFINE GO-2000B\_V1 SYSTEM V2.0.362  
Humidity: 65.0%  
Test Distance: 9.200m [K=1.0000]  
Remarks:





1000 lm

$\kappa = 1$



F = 5000 lm  
 K = 0.7  
 Hcc = 0.0 m  
 Hfc = 0.0 m  
 Eave = 100 lx

	Pcc	Pw	Pfc
—	70	50	30
—	50	30	20

